

RFQ 58224001436
ATTACHMENT 1 (SPECIFICATIONS/REQUIREMENTS)

11 FT ROAD GROOM (or equivalent)

Total Weight: 2450 Lbs. Approximately

Total Width: 11 Ft. = Main Frame Width 8 ½' & 2 ½' Wing

Total Length: 19' 6"

All Steel Construction

Blades: Commercial Grader Blades

Total Length:	31 Ft. Total Blade Length (State DOT Punch)
Blade Size:	4- 5/8" X 8" X 24"
	2- 5/8" X 8" X 48"
	1- 5/8" X 8" X 60"
	2- ¾" X 8" X 60" Serrated Ice Blades

Axle: 3500 Lbs. Capacity

Hyd. Cylinders:	1-3 X 8 Lift
	1-2 ½ X 16 Wing

Hoses: Double Braid 3/8 Hoses with ½' Pioneer Ends

Tires: 3 per Machine

Sizes: 20.5 X 8.5 X 10 Load Rated E

Added Options:

- (1) Set of Carbides (see picture 1, 2, 3 attached)
- (2) Set of Magnets (see picture 4 attached)



PICTURE 1



PICTURE 2

ROAD
GROOM
MANUFACTURING



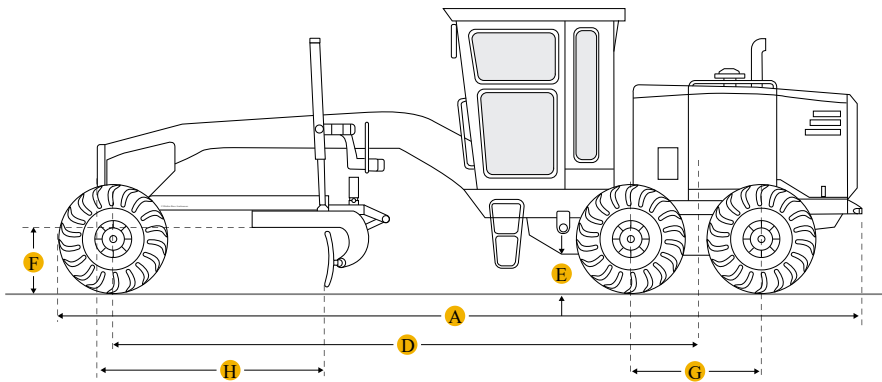
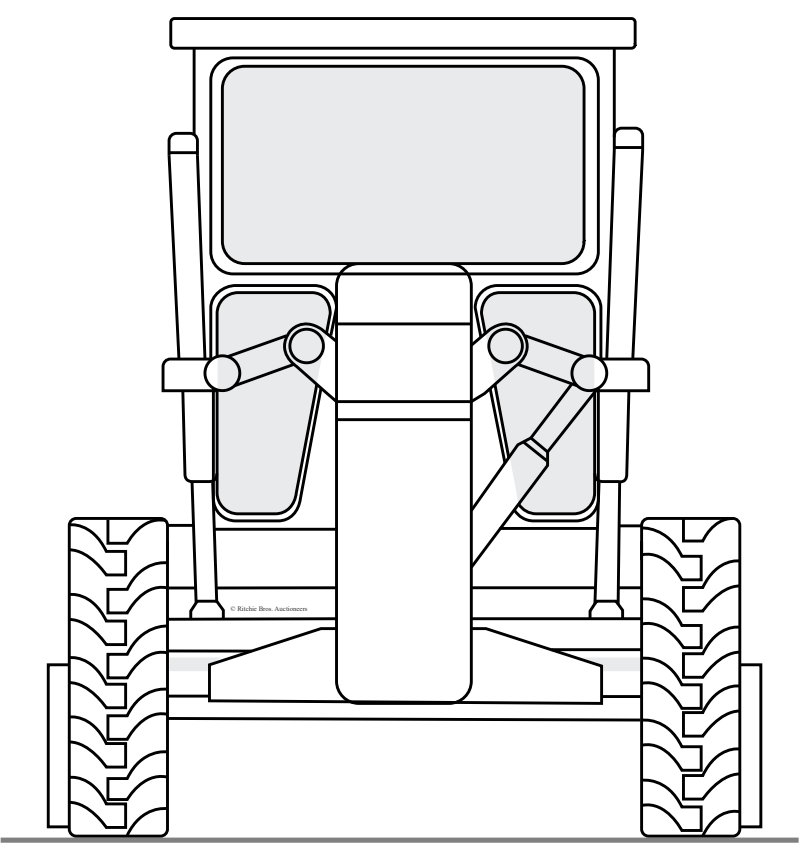
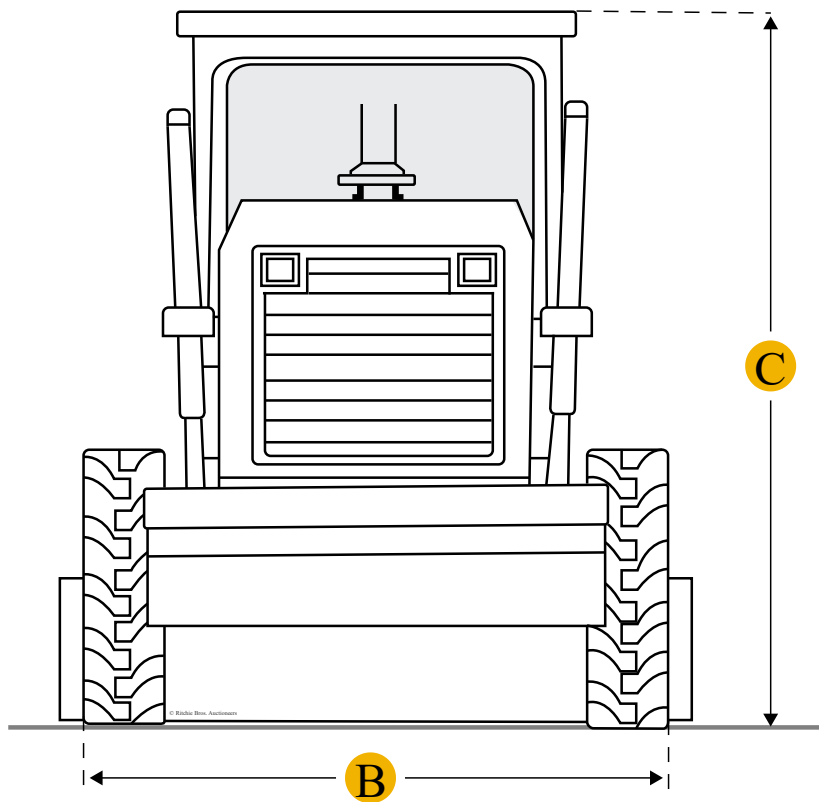


PICTURE 4

2008 Champion C80C (PURCHASED IS REQUIRED)

- Last Known Hours: 1289
- Original Purchase Price: \$110,612.20
- Purchase Date: September 2008
- S/N: 2608662
- State of Iowa Tag #: S-247
- Serviced and maintained by Camp Dodge Joint Maneuver Training Center (Building W-46)
- Equipment needs estimated \$7,600 in repairs
 - Including battery replacement and brakes
- Equipment currently not starting. Site visits can be requested to do walk-around and/or take pictures.

See additional pages attached for specifications and pictures of equipment.



Units Imperial Metric

Dimensions

Dimensions

A	Overall Length	20.84 ft in
B	Width Over Tires	7.75 ft in
	Height To Top Of Isomount Cab	9.51 ft in

Specifications

Engine	
Number Of Cylinders	4
Engine Make	2347
Engine Model	4BT3.9
Net Power Gear 1-2	110 hp
Power Measured @	2500 rpm
Displacement	238 cu in
Operational	
Std Operation Weight - Total	14991.5 lb
Steering	
Articulation Angle	27 degrees
Turning Radius	8.8 ft in
Transmission	
Transmission Type	Hydrostatic
Max Speed - Forward	19.9 mph
Max Speed - Reverse	19.9 mph
Front Axle	
Wheel Lean	15 degrees
Oscillation - Total	35 degrees
Moldboard	
Moldboard Width	11.1 ft in
Moldboard Height	19.1 in
Moldboard Thickness	0.7 in
Circle	
Max Reach Outside Tires - Left	87.1 in
Max Reach Outside Tires - Right	87.1 in
Max Lift Above Ground	20 in

Blade Tip Angle - Front

45 degrees

Blade Tip Angle - Rear

5 degrees









