

ABBREVIATIONS	
EQ	EQUAL
EXIST/EX	EXISTING
MIN	MINIMUM
MAX	MAXIMUM
O.C.	ON CENTER
PREFIN	PREFINISHED
REQMTS	REQUIREMENTS
S.S.	STAINLESS STEEL
TYP	TYPICAL
VER	VERIFY

DOC 1JD

DPP BASEMENT WATER INFILTRATION MITIGATION

745 MAIN ST
DUBUQUE, IOWA 52001

DAS PROJECT NO. 9390.00
GENESIS PROJECT NO. 2406

CONTACT LIST

OWNER:
STATE OF IOWA,
DEPARTMENT OF ADMINISTRATIVE SERVICES
109 SE 13TH STREET
DES MOINES, IOWA 50319

CLIENT:
DOC, FIRST DISTRICT
745 MAIN STREET
DUBUQUE, IA 52001

CONSTRUCTION MANAGER:
DCI GROUP
220 SE 6TH STREET - SUITE 200
DES MOINES, IA 50309
PROJECT MANAGER: JARRAD BOEVER
MOBILE: 515-480-8280

ARCHITECT:
GENESIS ARCHITECTURAL DESIGN
939 OFFICE PARK ROAD
WEST DES MOINES, IOWA 50265
EDWARD L. MATT, AIA
OFFICE: 515-440-1681

DURANTEM MEP CONSULTING
3737 WOODLAND AVE. SUITE 420
WEST DES MOINES, IA 50266
CASEY ADAMS, P.E.
OFFICE: 515-452-8341

LOCATION MAP

N.T.S.

PROJECT LOCATION
745 MAIN ST.
DUBUQUE, IOWA 52001

SHEET INDEX

ARCHITECTURAL

A0.0 COVER
A0.1 SITE MAP
A1.0 PARTIAL BASEMENT PLAN
A1.1 ALLEY & PARTIAL FIRST FLOOR PLAN
A1.2 PARTIAL SECOND FLOOR PLAN
A1.3 ALLEY PHOTO ELEVATION
A2.0 SECTION AND DETAILS

PLUMBING & ELECTRICAL

PD1.0 PARTIAL BASEMENT PLUMBING DEMO PLAN
PD1.1 ALLEY PLUMBING UTILITY DEMO PLAN
P1.0 PARTIAL BASEMENT PLUMBING PLAN
P1.1 ALLEY PLUMBING UTILITY PLAN
ED1.0 PARTIAL BASEMENT ELECTRICAL DEMO PLAN
ED1.1 PARTIAL BASEMENT ELECTRICAL DEMO PLAN
E1.0 PARTIAL BASEMENT ELECTRICAL PLAN
E1.1 ALLEY ELECTRICAL UTILITY PLAN

I hereby certify that this engineering document was prepared by me or under my direct personal supervision and that I am a duly licensed Professional Engineer under the laws of the State of Iowa

Signature

Casey L. Adams Reg. No. 23175

Date Issued: Nov. 14, 2024

Pages or sheets covered by this seal:
PD1.0, PD1.1, P1.0, P1.1, ED1.0, ED1.1, E1.0 & E1.1

I hereby certify that the portion of this technical submission described below was prepared by me or under my supervisor and responsible charge. I am a duly registered Architect under the laws of the State of Iowa.

Signature

Edward L. Matt 05761 Reg. No.

Pages or Sheets covered in part or whole by this seal:
A0.0, A0.1, A1.0, A1.1, A1.2, A1.3 & A2.0.

Date Issued: MARCH 5, 2025

939 OFFICE PARK RD., #101
WEST DES MOINES, IA 50265
TEL: 515-440-1681
FAX: 515-440-1687

DOC 1JD
DPP BASEMENT WATER INFILTRATION MITIGATION
745 MAIN ST
DUBUQUE, IOWA 52001

COVER

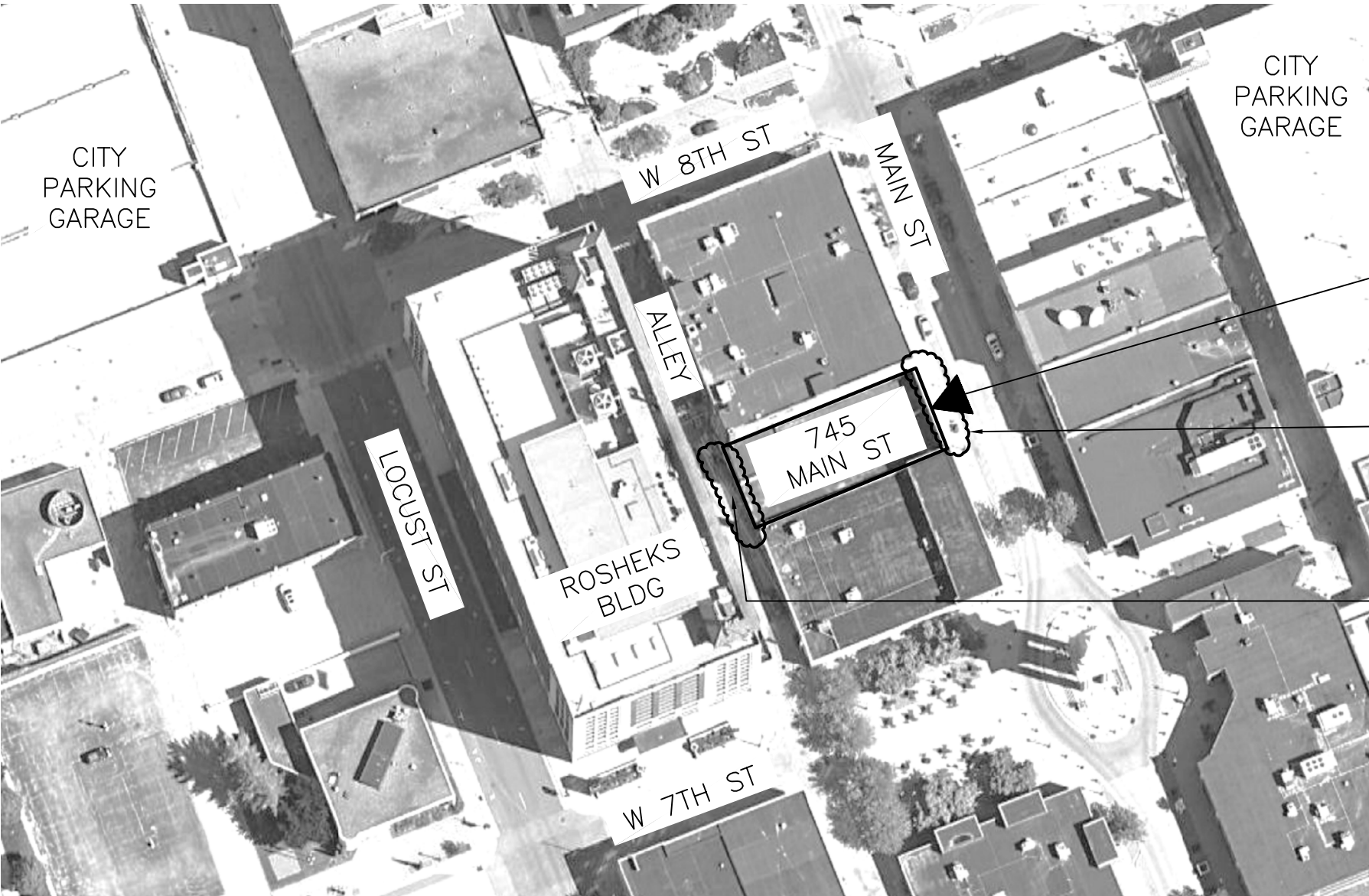
DAS NO.
9390.00

PROJECT NO.
2406

ISSUE DATE
03/05/2025

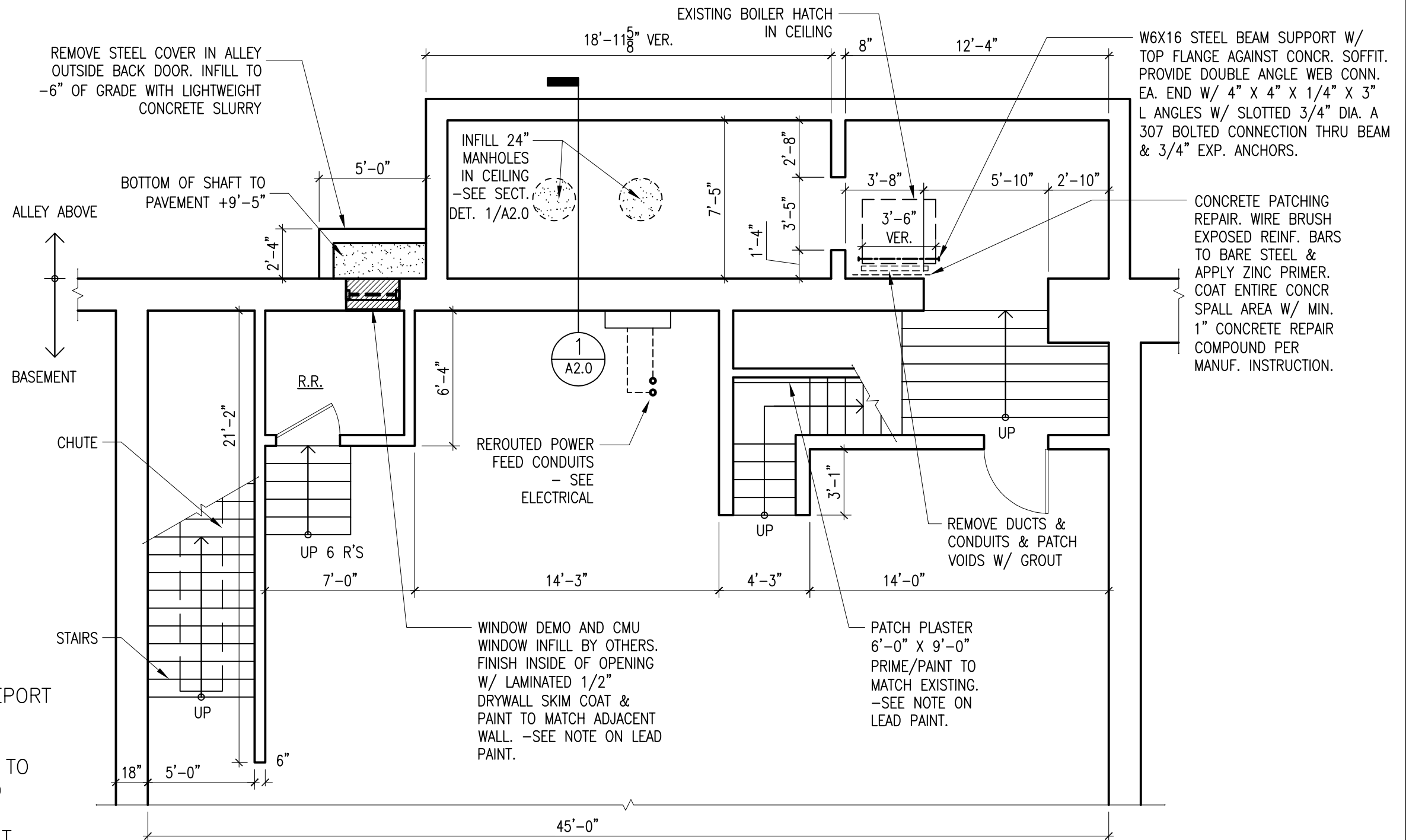
SHEET NUMBER
A0.0

- SITE NOTE:
- 1. CONTRACTOR PROVIDE WASTE DUMPSTER OR MAKE DAILY OFFSITE HAULS.
 - 2. COORDINATE WITH BUILDING OWNER AND CITY FOR SIDEWALK, PARKING, AND ALLEY CLOSURE. CONTRACTOR TO PROVIDE TEMPORARY SITE BARRIERS & PAY CITY FEES FOR ALL CLOSURES & PERMITS.
 - 3. CONTRACTOR TO COORDINATE DIRECT WITH THE CITY OF DUBUQUE FOR ALL UTILITY LOCATES, SERVICE INTERRUPTIONS, AND RECONNECTIONS.
 - 4. COORDINATE WITH BUILDING OWNER FOR ACCESS TO ELECTRICAL AND WATER.
 - 5. OWNER'S CM WILL PROVIDE PORTABLE TOILET.



SITE PLAN
SCALE: NOT TO SCALE

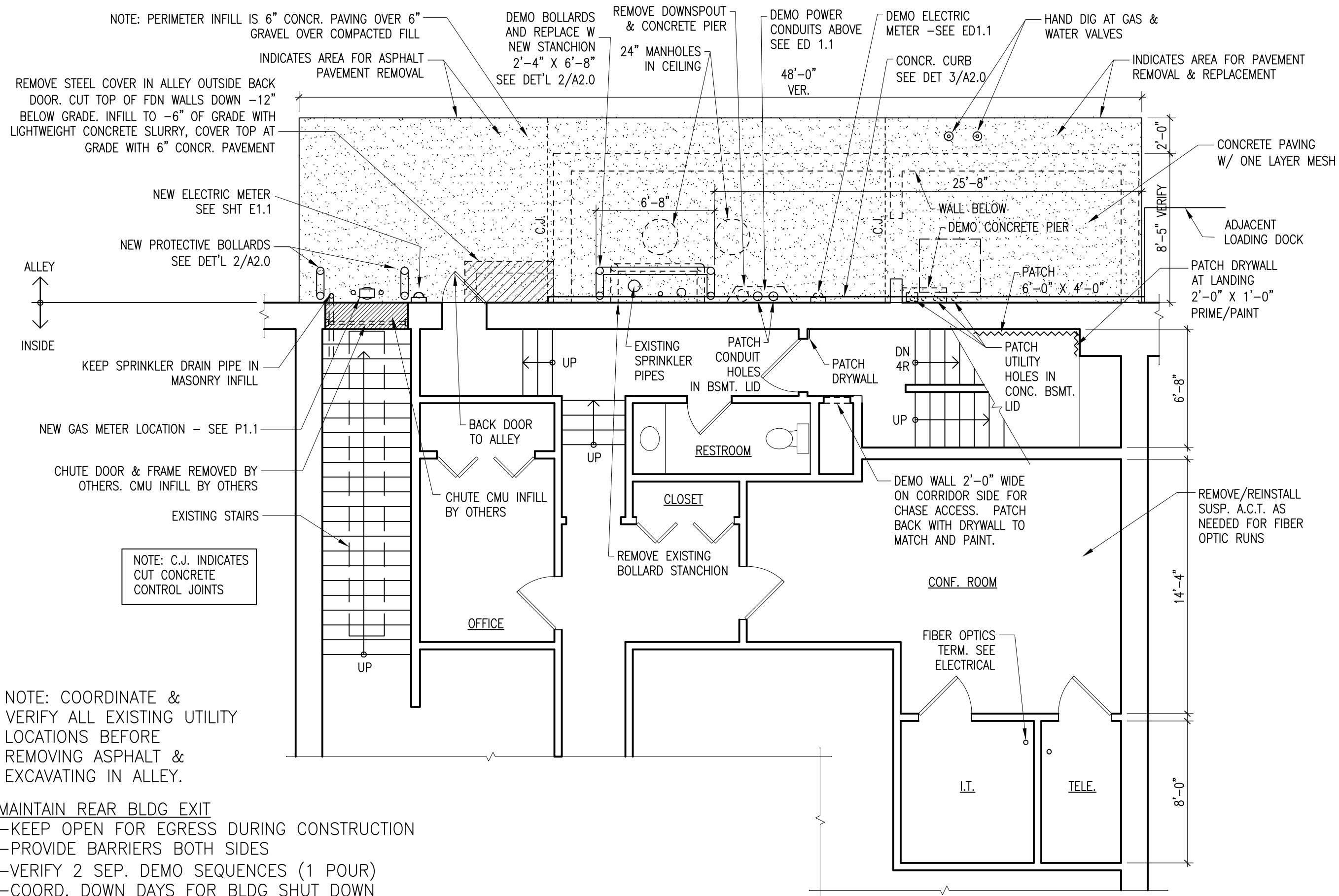
NOTE: SEE HAZMAT REPORT
IN SPEC. CONTRACT
PERFORMING PLASTER
PATCHING & PAINTING TO
BE LEAD CERTIFIED TO
WORK ON AREAS
CONTAINING LEAD PAINT.



PARTIAL BASEMENT PLAN

SCALE: 3/16" = 1'-0"

1
A1.0



NOTE: COORDINATE & VERIFY ALL EXISTING UTILITY LOCATIONS BEFORE REMOVING ASPHALT & EXCAVATING IN ALLEY.

- MAINTAIN REAR BLDG EXIT
- KEEP OPEN FOR EGRESS DURING CONSTRUCTION
 - PROVIDE BARRIERS BOTH SIDES
 - VERIFY 2 SEP. DEMO SEQUENCES (1 POUR)
 - COORD. DOWN DAYS FOR BLDG SHUT DOWN

ALLEY & PARTIAL FIRST FLOOR PLAN

SCALE: 3/16" = 1'-0"

1
A1.1

939 OFFICE PARK RD., #101
WEST DES MOINES, IA 50265
TEL: 515-440-1681
FAX: 515-440-1687

GENESIS
ARCHITECTURAL DESIGN

DOC 1JD

DPP BASEMENT WATER INFILTRATION MITIGATION

745 MAIN ST

DUBUQUE, IOWA 52001

ALLEY & PARTIAL FIRST FLOOR PLAN

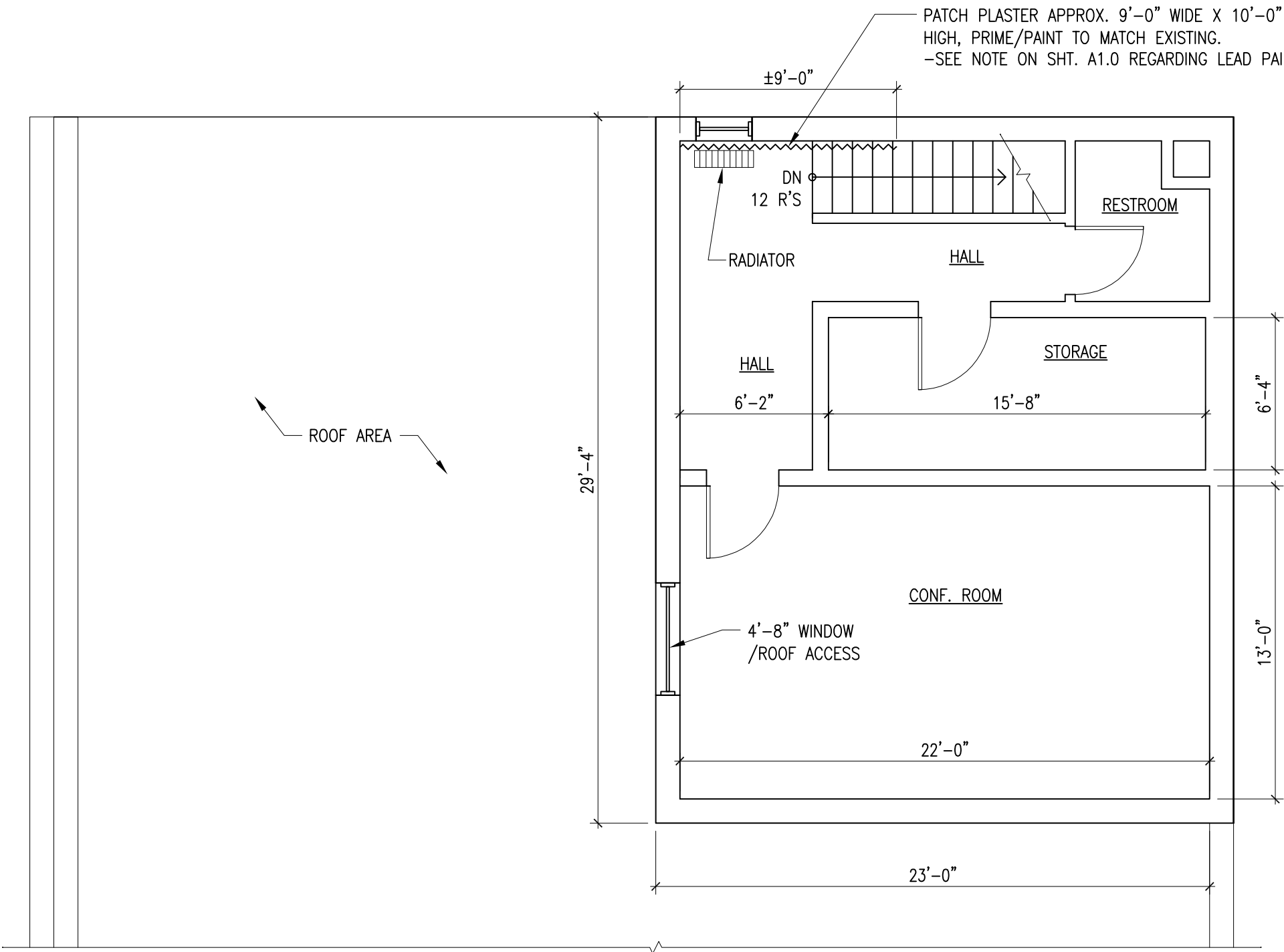
DAS NO.
9390.00

PROJECT NO.
2406

ISSUE DATE
05/05/2025

SHEET NUMBER
A1.1

NOTE: COORDINATE PLASTER REPAIRS W/
SEPARATE ROOFING PROJECT SO THAT
PLASTER & PAINTING WORK IS DONE
AFTER THE ROOF HAS BEEN COMPLETED.



PARTIAL SECOND FLOOR PLAN

SCALE: 3/16" = 1'-0"

939 OFFICE PARK RD., #101
WEST DES MOINES, IA 50265
TEL: 515-440-1681
FAX: 515-440-1687

**GENESIS**
ARCHITECTURAL DESIGN

DOC 1JD

DPP BASEMENT WATER INFILTRATION MITIGATION

745 MAIN ST

DUBUQUE, IOWA 52001

PARTIAL
SECOND FLOOR
PLAN

DAS NO.
9390.00

PROJECT NO.
2406

ISSUE DATE
03/05/2025

SHEET NUMBER
A1.2



ALLEY PHOTO ELEVATION
NTS

1
A1.3

939 OFFICE PARK RD., #101
WEST DES MOINES, IA 50265
TEL: 515-440-1681
FAX: 515-440-1687

**GENESIS**
ARCHITECTURAL DESIGN

DOC 1JD
DPP BASEMENT WATER INFILTRATION MITIGATION
745 MAIN ST
DUBUQUE, IOWA 52001

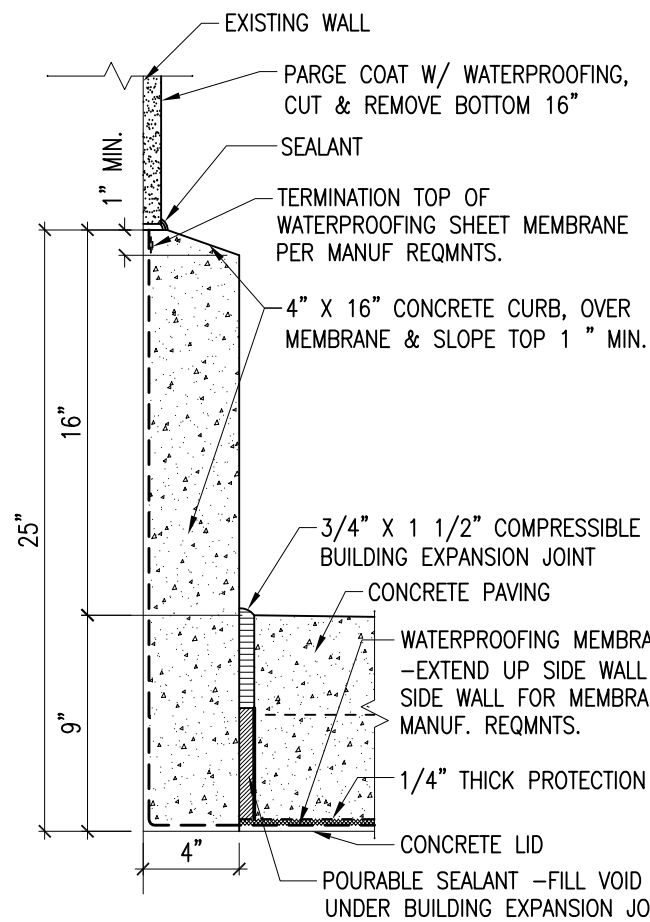
ALLEY PHOTO
ELEVATION

DAS NO.
9390.00

PROJECT NO.
2406

ISSUE DATE
03/05/2025

SHEET NUMBER
A1.3



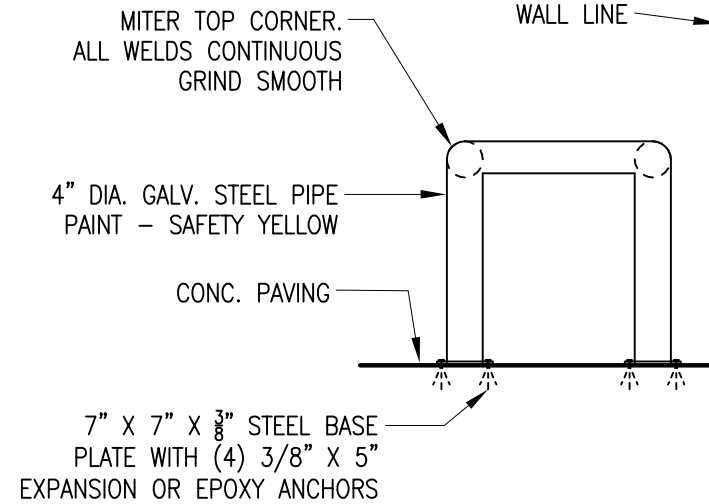
WALL BASE DETAIL

SCALE: 1 1/2" = 1'-0"

3
A2.0

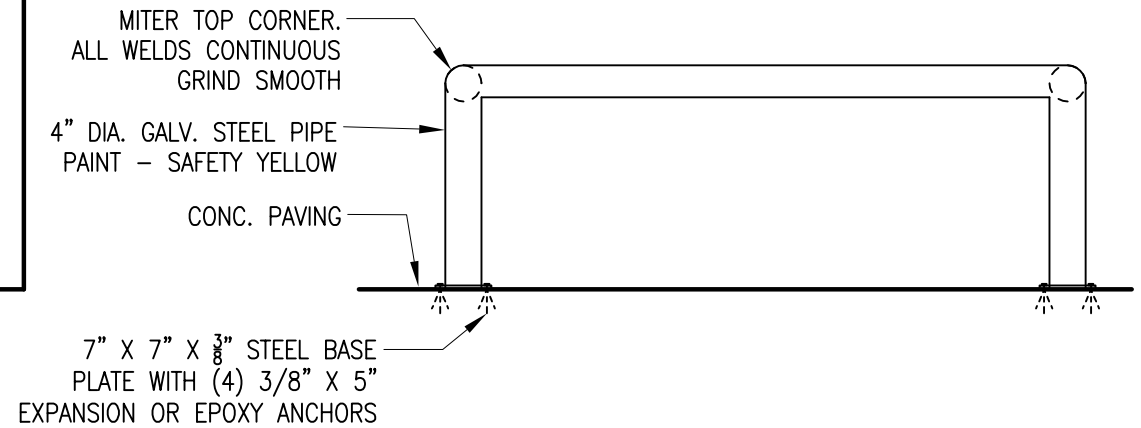
NOTE:

- BASE BID WATERPROOFING SYSTEM IS 120 MIL THICK
- SEE ALT. #1 FOR HOT FLUID APPLIED 215 MIL THICK.

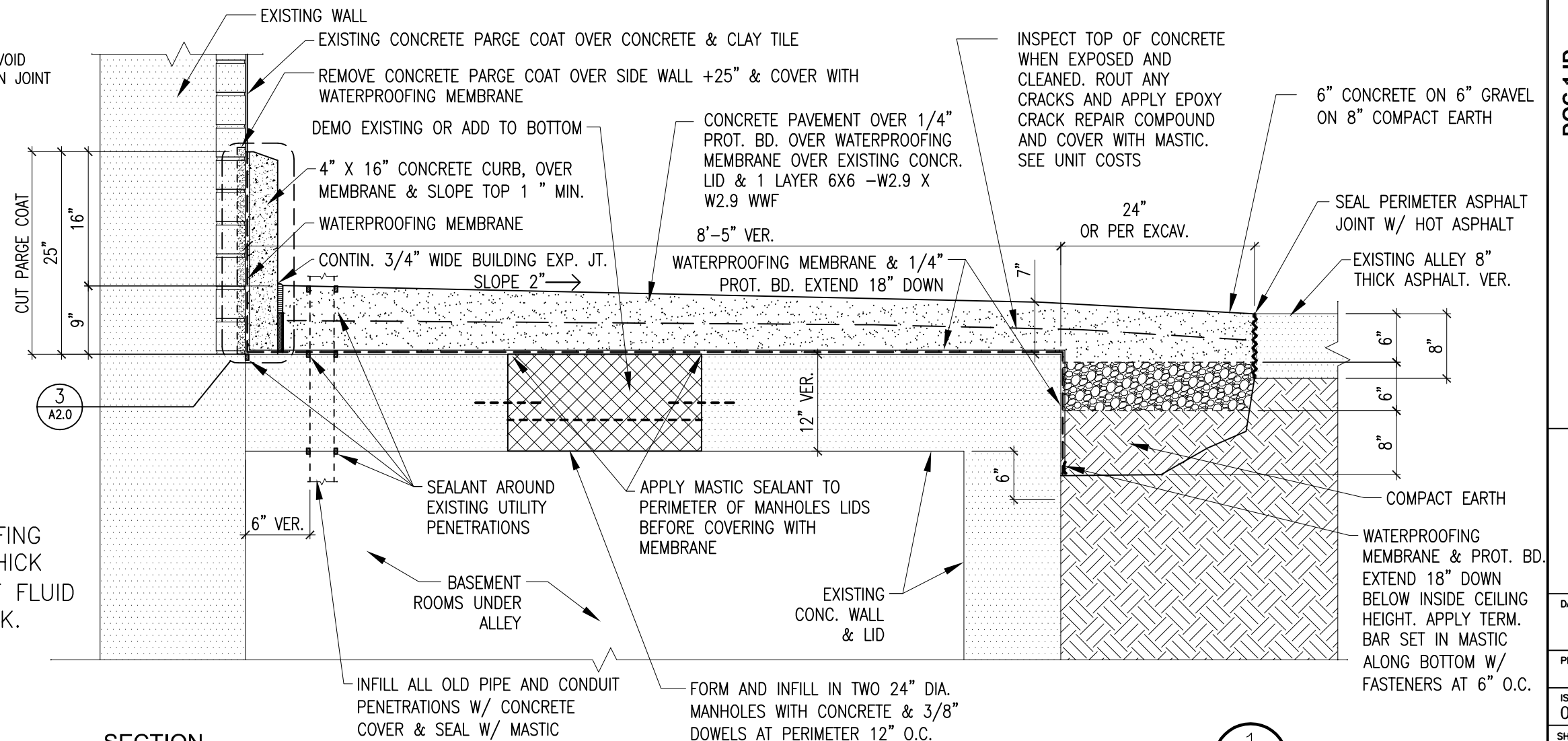


BOLLARD DETAILS

SCALE: 1/2" = 1'-0"



2
A2.0



SECTION

SCALE: 3/4" = 1'-0"

1
A2.0

DOC 1JD
DPP BASEMENT WATER INFILTRATION MITIGATION
745 MAIN ST
DUBUQUE, IOWA 52001

939 OFFICE PARK RD., #101
WEST DES MOINES, IA 50265
TEL: 515-440-1681
FAX: 515-440-1687

GENESIS
ARCHITECTURAL DESIGN

SECTION

DAS NO.
9390.00

PROJECT NO.
2406

ISSUE DATE
03/05/2025

SHEET NUMBER
A2.0

GENERAL PLUMBING NOTES

1.

ALL WORK SHALL CONFORM TO THE REQUIREMENTS OF ALL APPLICABLE STATE, AND NATIONAL CODES, AS WELL AS LOCAL UTILITY REQUIREMENTS. PROVIDE ALL REQUIRED ACCESSORIES AND EQUIPMENT FOR A COMPLETE OPERATIONAL SYSTEM AND MAINTAIN WARRANTY REQUIREMENTS. VERIFY ALL EQUIPMENT PROVIDED IS SUITABLE FOR INTENDED USE.
2.

WORK NOT SPECIFICALLY SHOWN IN DETAIL, REFERENCED, OR OTHERWISE IMPLIED, SHALL BE PROVIDED IN ACCORDANCE WITH TRADE OR INDUSTRY BEST STANDARD PRACTICES TO PROVIDE A COMPLETE OPERATIONAL SYSTEM.
3.

ALL MATERIALS SHALL BE NEW AND SHALL BE OF THE TYPE AND SHALL MEET THE CAPACITIES OF EQUIPMENT SPECIFIED ON THE DRAWINGS.
4.

ALL EQUIPMENT LISTED UNDER THESE SPECIFICATIONS SHALL BE LIMITED TO PRODUCTS REGULARLY PRODUCED AND RECOMMENDED FOR SERVICE IN ACCORDANCE WITH ENGINEERING DATA, RATINGS, OR OTHER COMPREHENSIVE LITERATURE MADE AVAILABLE TO THE PUBLIC AND IN EFFECT AT THE TIME OF OPENING BIDS.
5.

EQUIPMENT SHALL BE INSTALLED IN STRICT ACCORDANCE WITH THE MANUFACTURER'S INSTRUCTIONS AND CODE REQUIREMENTS FOR TYPE AND CAPACITY OF EACH PIECE OF EQUIPMENT USED.
6.

ALL CUTTING AND PATCHING REQUIRED FOR PLUMBING AND FIRE WORK SHALL BE PERFORMED BY THE MECHANICAL CONTRACTOR UNLESS NOTED OTHERWISE. ALL FINISHED SURFACES THAT ARE CUT SHALL BE REPLACED IN KIND SO THERE IS NO VISIBLE EVIDENCE OF CUTTING AND/OR PATCHING.
7.

INSTALL HANGERS AND SUPPORTS AS REQUIRED TO ADEQUATELY AND SECURELY SUPPORT PLUMBING SYSTEM COMPONENTS IN A NEAT AND WORKMANLIKE MANNER. DO NOT FASTEN SUPPORTS TO PIPES, DUCTS, MECHANICAL EQUIPMENT, OR CONDUIT.
8.

COORDINATE PIPE ROUTING AND EQUIPMENT WITH BUILDING STRUCTURE, LIGHTING, AND FIRE ALARM DEVICES.
9.

ALL EXPOSED MATERIALS SHALL BE PLENUM RATED.
10.

NO LOADS SHALL BE PERMITTED TO BE HUNG FROM ROOF DECKING. ALL HANGERS SHALL BE HUNG DIRECTLY FROM STRUCTURE.
11.

PROVIDE AS-BUILT DRAWINGS FOR PLUMBING AND FIRE SYSTEMS WITHIN 30 DAYS OF SUBSTANTIAL COMPLETION.
12.

PROVIDE O&M MANUALS FOR ALL SYSTEMS AND EQUIPMENT TO OWNER WITHIN 30 DAYS OF SUBSTANTIAL COMPLETION.

939 OFFICE PARK RD., #101
WEST DES MOINES, IA 50265
TEL: 515-440-1681
FAX: 515-440-1687



GENESIS
ARCHITECTURAL DESIGN

DOC 1JD

DPP BASEMENT WATER INFILTRATION MITIGATION

745 MAIN ST

DUBUQUE, IOWA 52001

GENERAL PLUMBING
NOTES

DAS NO.

9390.00

PROJECT NO.

2406

ISSUE DATE

03/05/25

SHEET NUMBER

P0.0

KEYED NOTES

- 1

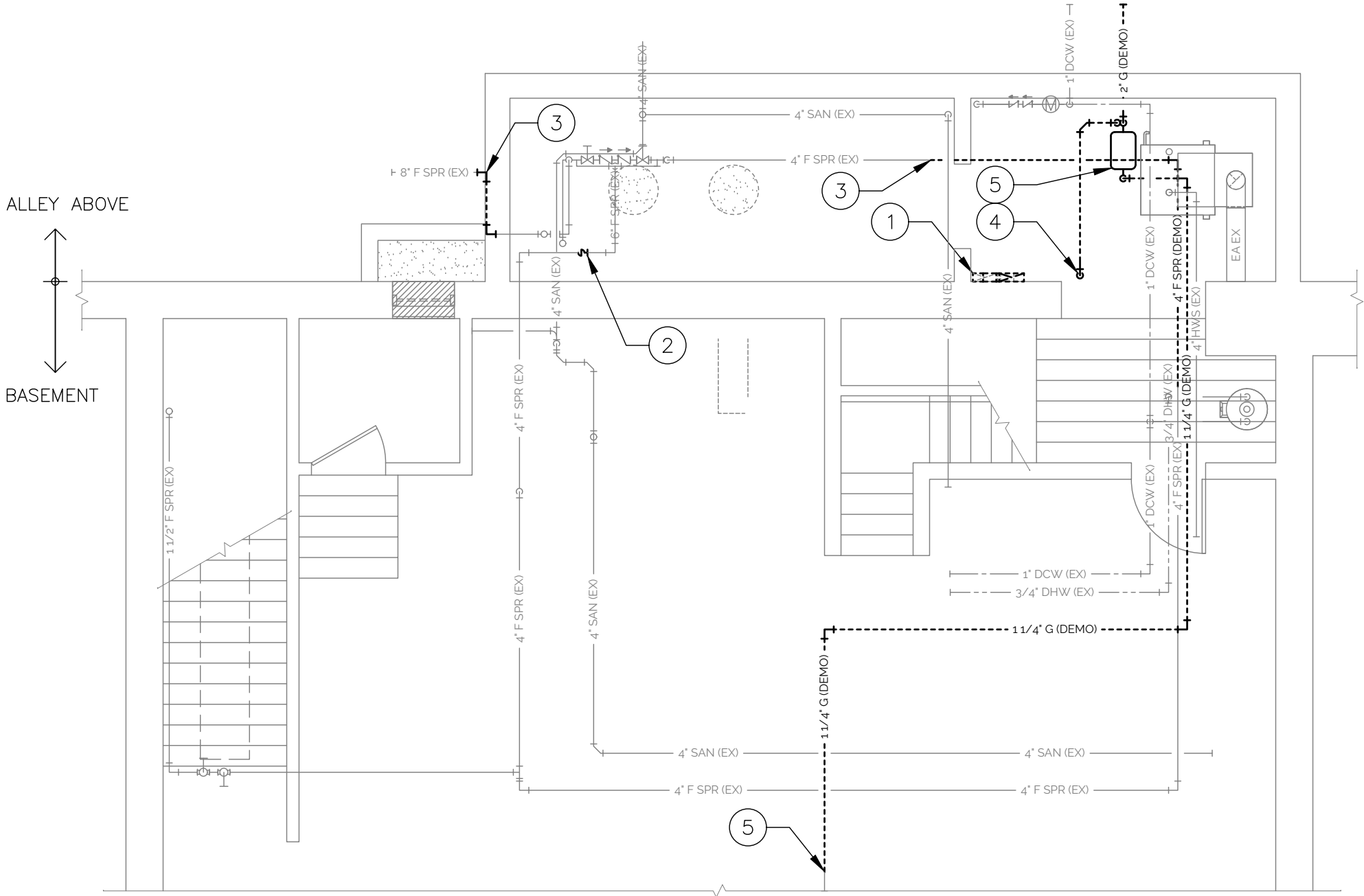
DEMO EXHAUST DUCT.
- 2

REPLACE 4" SPRINKLER RISER TO FDC AND SHUT OFF VALVE.
- 3

DEMO SPRINKLER PIPING AS INDICATED.
- 4

FOR CONTRACTOR REFERENCE ONLY: BLACK HILLS TO DEMO GAS REGULATOR VENT RISER TO ALLEY. REFER TO NEW WORK PLANS FOR RECONNECTION.
- 5

FOR CONTRACTOR REFERENCE ONLY: REMOVAL OF GAS METER, REGULATOR, AND GAS PIPING TO BE COMPLETED BY BLACK HILLS ENERGY. REFER TO NEW WORK PLANS FOR NEW GAS SERVICE ENTRANCE LOCATION. COORDINATE PHASING OF WORK WITH UTILITY COMPANY.



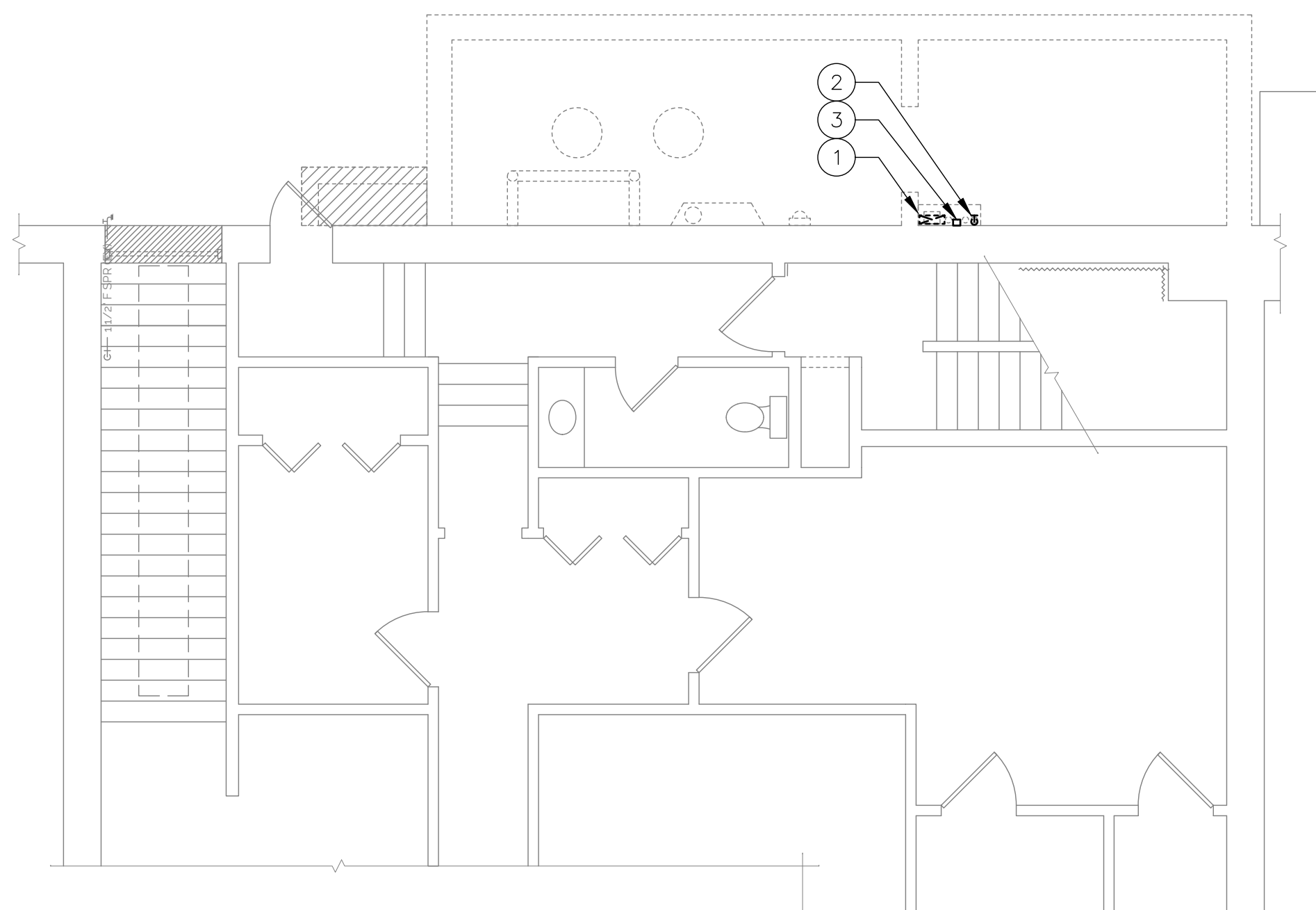
1 PARTIAL BASEMENT PLUMBING DEMO PLAN
3/16" = 1'-0"

DOC 1JD
DPP BASEMENT WATER INFILTRATION MITIGATION
745 MAIN ST
DUBUQUE, IOWA 52001

PARTIAL BASEMENT
PLUMBING DEMO
PLAN

DAS NO.
9390.00
PROJECT NO.
2406
ISSUE DATE
03/05/25
SHEET NUMBER
PD1.0

939 OFFICE PARK RD., #101
WEST DES MOINES, IA 50265
TEL: 515-440-1681
FAX: 515-440-1687
GENESIS
ARCHITECTURAL DESIGN



KEYED NOTES

- 1 DEMO EXHAUST DUCT.
- 2 FOR CONTRACTOR REFERENCE ONLY: BLACK HILLS TO DEMO GAS REGULATOR VENT RISER TO ALLEY.
- 3 FOR CONTRACTOR REFERENCE ONLY: WATER METER REMOTE READER TO BE RELOCATED BY CITY OF DUBUQUE WATER DEPARTMENT. REFER TO NEW WORK PLANS FOR NEW LOCATION.



1 ALLEY & PARTIAL FIRST FLOOR PLUMBING DEMO PLAN
3/16" = 1'-0"

KEYED NOTES

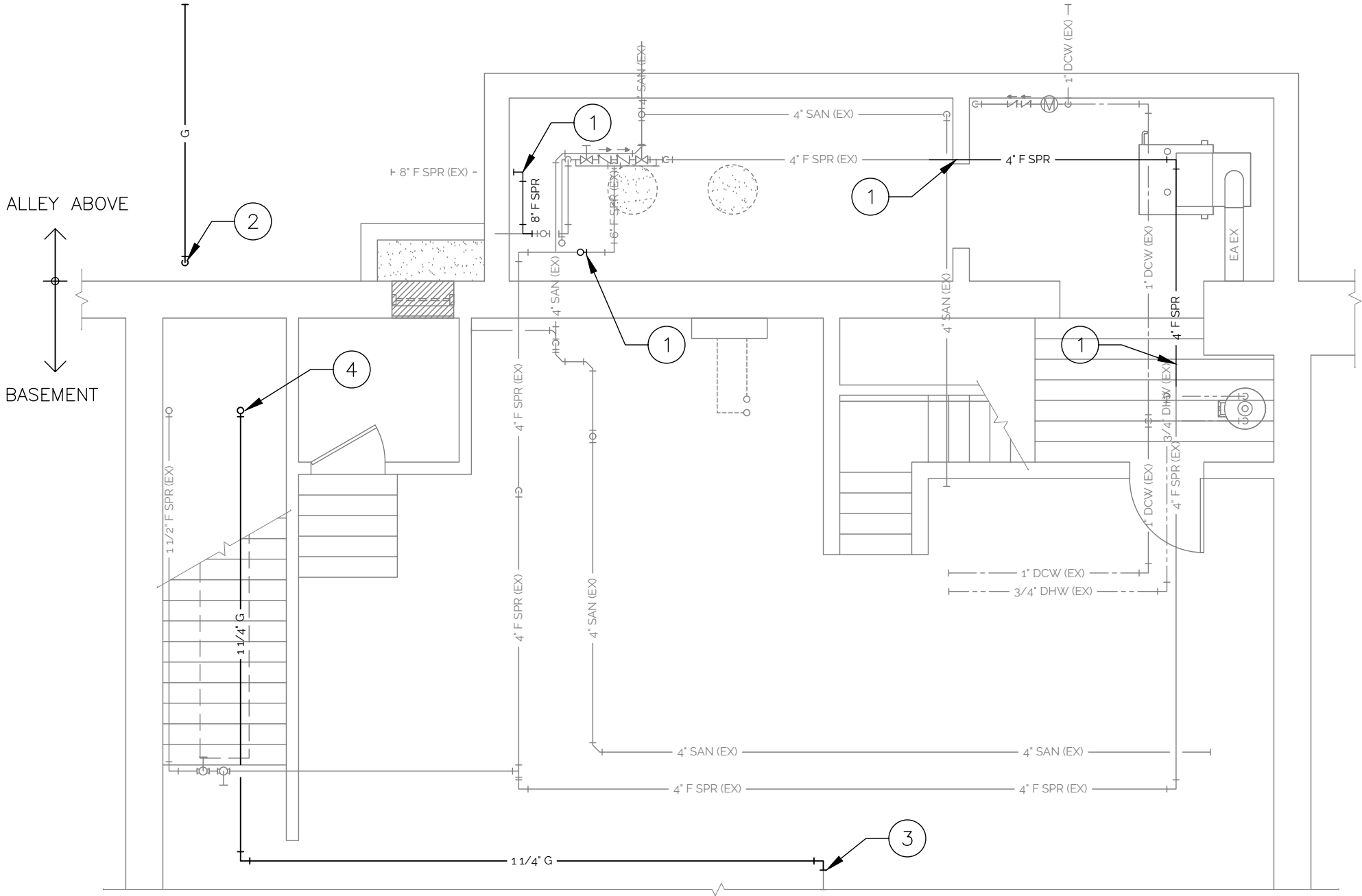
- 1

REPLACE FIRE SPRINKLER PIPING AS INDICATED.
- 2

FOR CONTRACTOR REFERENCE ONLY: NATURAL GAS SERVICE UP TO METER. WORK TO BE PERFORMED BY BLACK HILLS ENERGY.
- 3

FOR CONTRACTOR REFERENCE ONLY: CONNECT TO EXISTING GAS PIPING IN THIS AREA. WORK TO BE PERFORMED BY BLACK HILLS ENERGY.
- 4

FOR CONTRACTOR REFERENCE ONLY: 1-1/4" G UP. REFER TO SHEET P1.1 FOR CONTINUATION. WORK TO BE PERFORMED BY BLACK HILLS ENERGY.

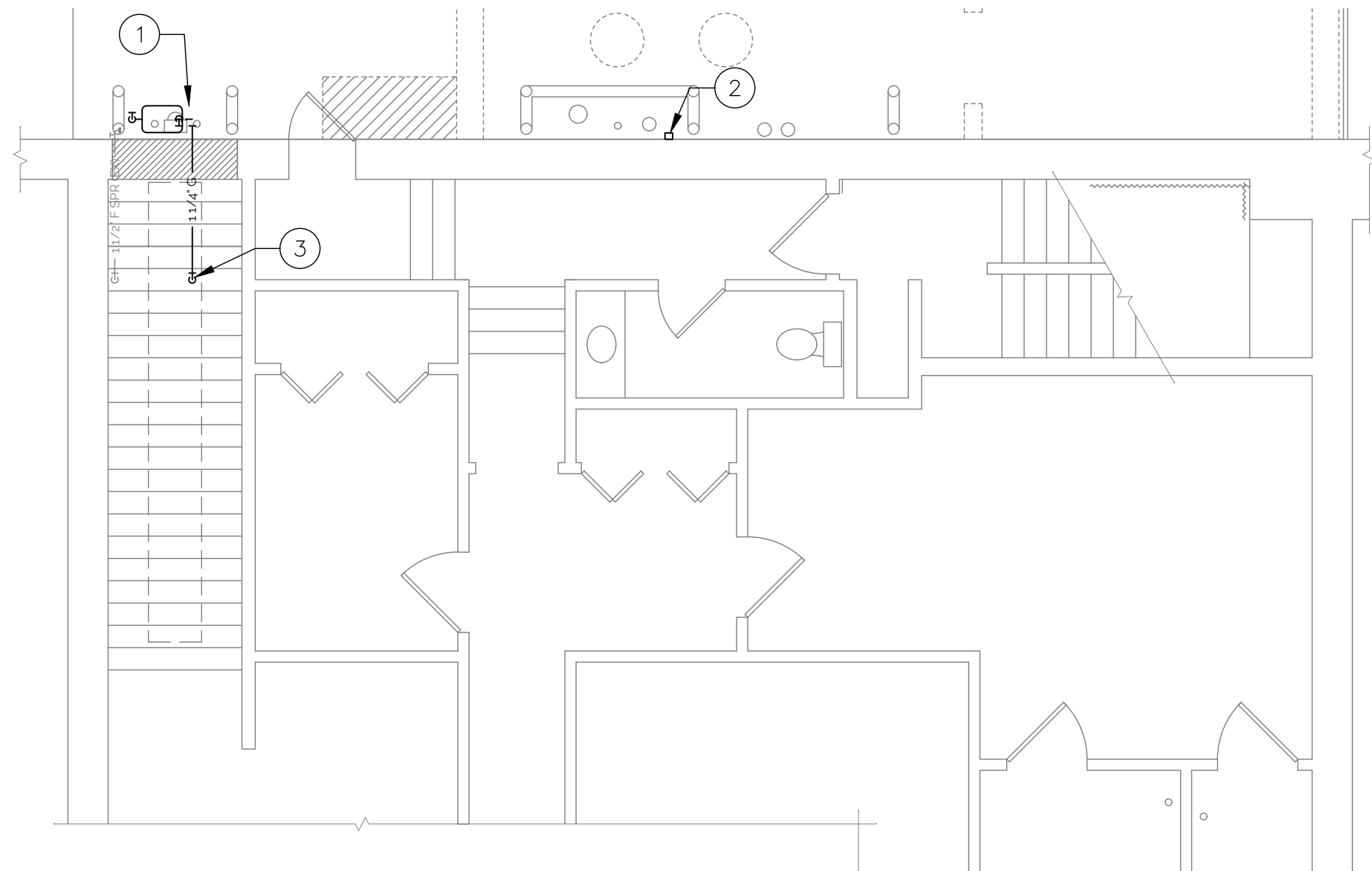


1 PARTIAL BASEMENT PLUMBING PLAN
3/16" = 1'-0"

DOC 1JD
DPP BASEMENT WATER INFILTRATION MITIGATION
745 MAIN ST
DUBUQUE, IOWA 52001

PARTIAL BASEMENT
PLUMBING PLAN

DAS NO.	9390.00
PROJECT NO.	2406
ISSUE DATE	03/05/25
SHEET NUMBER	P1.0




KEYED NOTES

- 1 FOR CONTRACTOR REFERENCE ONLY: BLACK HILLS ENERGY TO INSTALL NEW GAS METER, REGULATOR, AND ROUTE 1-1/4" G TO BASEMENT CHUTE ~18" ABOVE GRADE. BLACK HILLS TO COORDINATE PHASING OF WORK WITH GENERAL CONTRACTOR.
- 2 FOR CONTRACTOR REFERENCE ONLY: CITY OF DUBUQUE WATER DEPARTMENT TO REINSTALL WATER METER REMOTE READER IN NEW LOCATION. COORDINATE WITH WATER UTILITY COMPANY.
- 3 FOR CONTRACTOR REFERENCE ONLY: 1-1/4" G DOWN. REFER TO SHEET P1.0 FOR CONTINUATION. WORK TO BE PERFORMED BY BLACK HILLS ENERGY.



1 ALLEY & PARTIAL FIRST FLOOR PLUMBING PLAN
3/16" = 1'-0"

939 OFFICE PARK RD., #101
WEST DES MOINES, IA 50265
TEL: 515-440-1681
FAX: 515-440-1687

**GENESIS**
ARCHITECTURAL DESIGN

DOC 1JD
DPP BASEMENT WATER INFILTRATION MITIGATION
745 MAIN ST
DUBUQUE, IOWA 52001

ALLEY PLUMBING
UTILITY PLAN

DAS NO.	9390.00
PROJECT NO.	2406
ISSUE DATE	03/05/25
SHEET NUMBER	P1.1

GENERAL ELECTRICAL NOTES

1.

ALL WORK SHALL CONFORM TO THE REQUIREMENTS OF ALL APPLICABLE STATE, AND NATIONAL CODES, AS WELL AS LOCAL UTILITY REQUIREMENTS. CONTRACTOR SHALL COORDINATE WITH LOCAL CODE OFFICIALS TO DETERMINE IF ANY CODE INTERPRETATIONS BY CODE ENFORCEMENT OFFICIALS WILL IMPACT PLANNED WORK.
2.

PROVIDE ALL REQUIRED ACCESSORIES AND EQUIPMENT FOR A COMPLETE OPERATIONAL SYSTEM AND MAINTAIN WARRANTY REQUIREMENTS. VERIFY ALL EQUIPMENT PROVIDED IS SUITABLE FOR INTENDED USE. INSTALL ALL EQUIPMENT IN STRICT ACCORDANCE WITH MANUFACTURER'S INSTRUCTIONS.
3.

WORK NOT SPECIFICALLY SHOWN IN DETAIL, REFERENCED, OR OTHERWISE IMPLIED, SHALL BE PROVIDED IN ACCORDANCE WITH TRADE OR INDUSTRY BEST STANDARD PRACTICES TO PROVIDE A COMPLETE OPERATIONAL SYSTEM.
4.

COORDINATE EXACT WIRING REQUIREMENTS WITH MANUFACTURER'S REQUIREMENTS FOR EACH FIXTURE AND PIECE OF EQUIPMENT.
5.

INSTALL HANGERS AND SUPPORTS AS REQUIRED TO ADEQUATELY AND SECURELY SUPPORT ELECTRICAL SYSTEM COMPONENTS IN A NEAT AND WORKMANLIKE MANNER AS SPECIFIED IN NECA 1. DO NOT FASTEN SUPPORTS TO PIPES, DUCTS, MECHANICAL EQUIPMENT, OR CONDUIT.
6.

INSTALL CONDUIT SECURELY IN A NEAT AND WORKMANLIKE MANNER AS SPECIFIED IN NECA 1.
7.

EQUIPMENT CONNECTIONS: MAKE CONDUIT CONNECTIONS TO EQUIPMENT USING FLEXIBLE CONDUIT.
8.

INSTALL DISCONNECT SWITCHES, CONTROLLERS, CONTROL STATIONS, AND CONTROL DEVICES TO COMPLETE EQUIPMENT WIRING REQUIREMENTS.
9.

PROVIDE AS-BUILT DRAWINGS FOR ELECTRICAL SYSTEMS WITHIN 30 DAYS OF SUBSTANTIAL COMPLETION.
10.

PROVIDE O&M MANUALS FOR ALL SYSTEMS AND EQUIPMENT TO OWNER WITHIN 30 DAYS OF SUBSTANTIAL COMPLETION.
11.

ALL EXPOSED CABLING SHALL BE PLENUM RATED.
12.

CONTRACTOR(S) SHALL UNCONDITIONALLY WARRANTY IN WRITING ALL MATERIALS, EQUIPMENT, AND WORKMANSHIP FOR ONE YEAR FROM DATE OF ACCEPTANCE BY OWNER. CONTRACTOR(S) SHALL PROVIDE FREE SERVICE FOR ALL EQUIPMENT INVOLVED IN THEIR CONTRACT DURING THE WARRANTY PERIOD.

KEYED NOTES

- 1

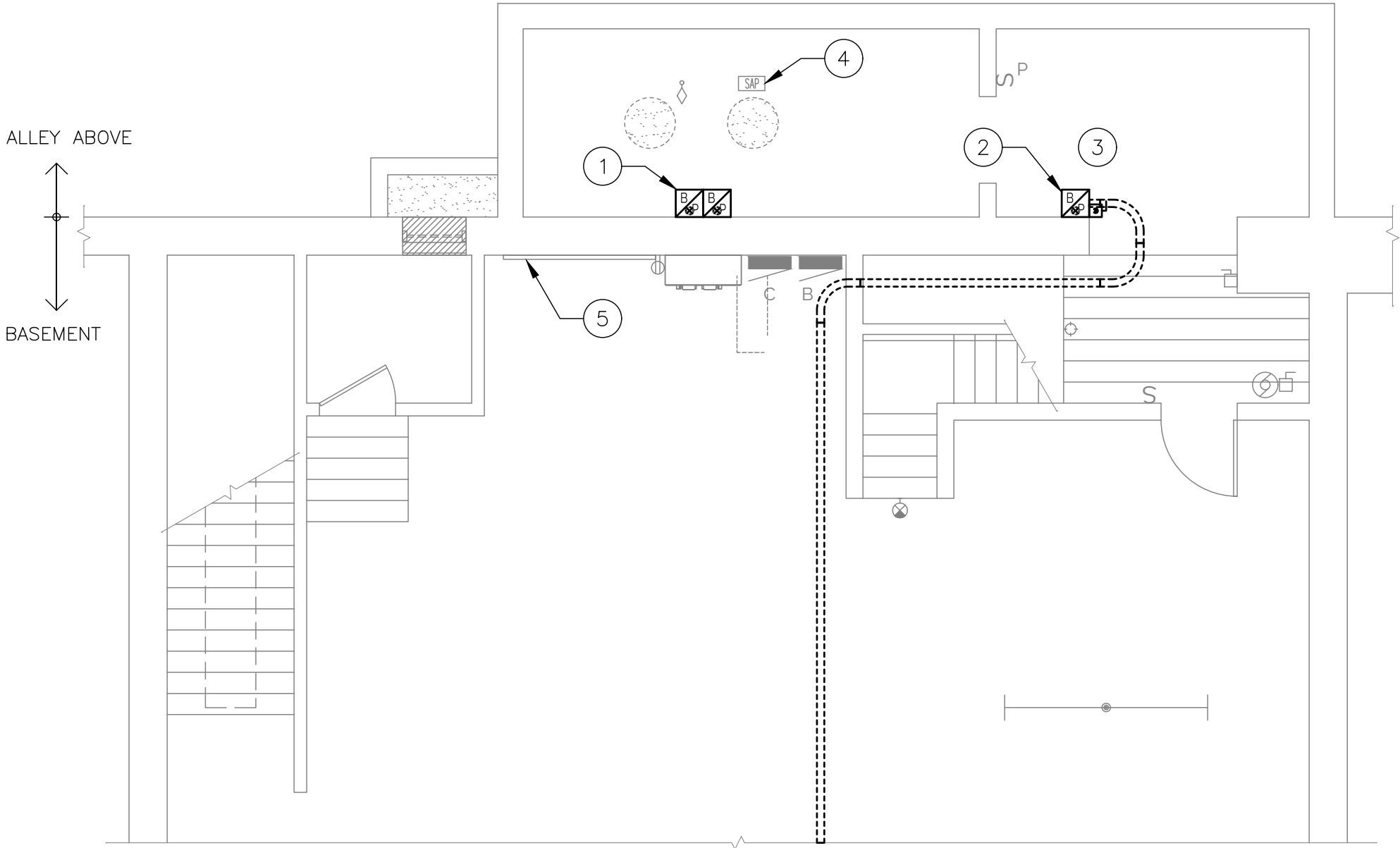
REMOVE SPLICE BOXES AND CONDUIT UP TO ELECTRIC METER IN ALLEY. REFER TO NEW WORK PLANS FOR NEW ROUTING.
- 2

REMOVE (2) LINES OF FIBER OPTIC CABLING AND CONDUIT AS INDICATED. COORDINATE REMOVAL OF 3RD LINE OF FIBER OPTICE CABLING WITH MEDIACOM. MINIMIZE SHUTDOWN(S) TO NIGHT/WEEKEND AS MUCH AS POSSIBLE. COORDINATE SHUTDOWN WITH OWNER.
- 3

DEMO CIRCUITS SERVING DOWNSPOUT HEAT TRACE. COORDINATE HEAT TRACE LOCATIONS AND REVISIONS WITH ROOFING REPLACEMENT AND TUCKPOINTING PROJECTS. REFER TO NEW WORK PLANS FOR NEW CONDUIT ROUTING.
- 4

REMOVE FIRE ALARM GONG CONDUCTORS TO FIRE SPRINKLER SERVICE. REFER TO SHEET ED1.1 FOR GONG LOCATION.
- 5

COORDINATE REMOVAL OF PHONE LINES AND SPLICE BOX WITH CENTURYLINK. MINIMIZE SHUTDOWN(S) TO NIGHT/WEEKEND AS MUCH AS POSSIBLE. COORDINATE SHUTODOWN WITH OWNER.



1 PARTIAL BASEMENT ELECTRICAL DEMO PLAN
3/16" = 1'-0"

KEYED NOTES

- 1

REMOVE CONDUIT UP TO OVERHEAD SERVICE, METER, AND METERING CONDUIT/CONDUCTORS. REFER TO NEW WORK PLANS FOR NEW ROUTING. COORDINATE WORK WITH ALLIANT ENERGY. NOTE: DEMO WORK IS NOT TO BE COMPLETED UNTIL NEW SERVICE IS IN PLACE.
- 2

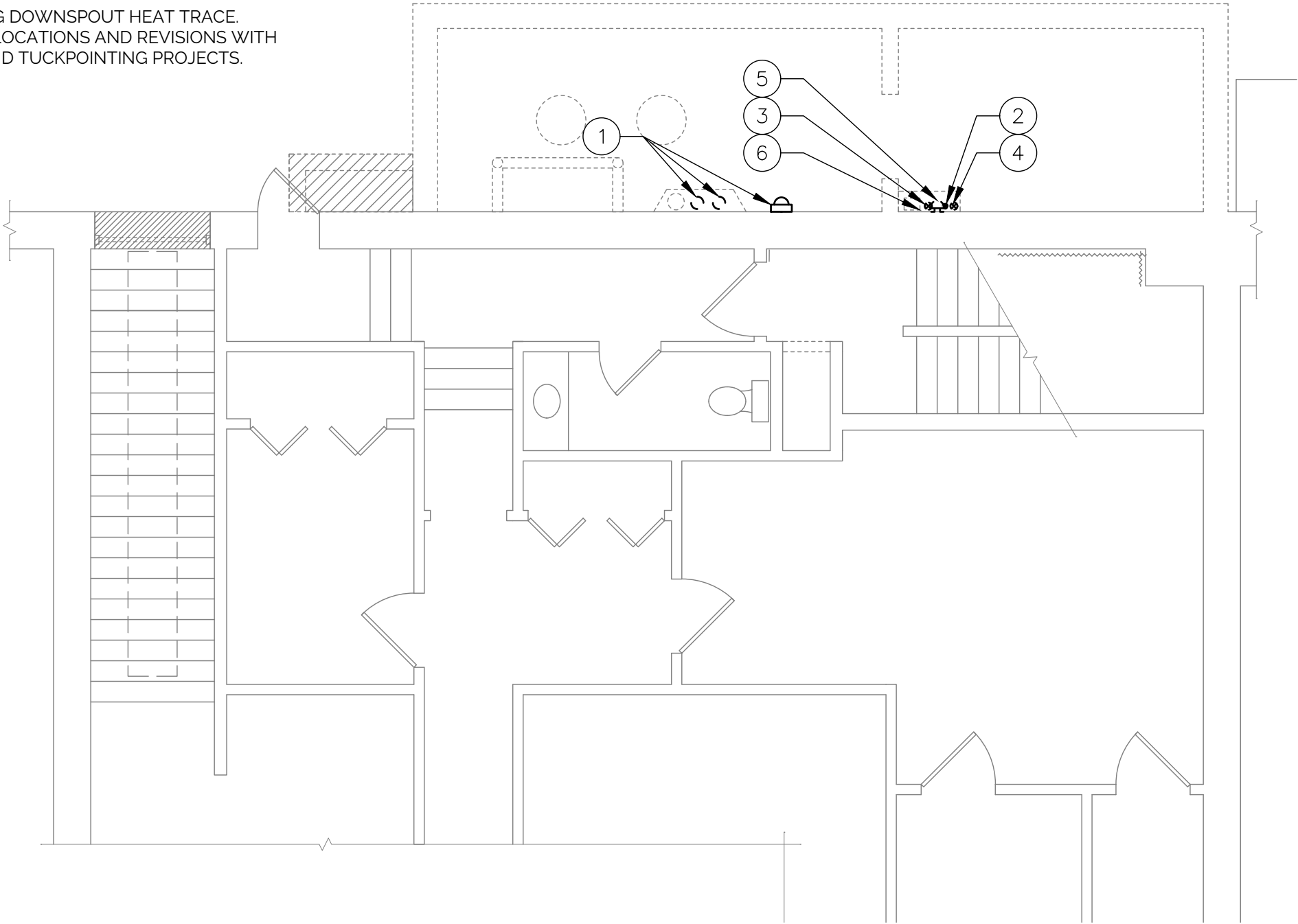
REMOVE (2) LINES OF FIBER OPTIC CABLING AND CONDUIT AS INDICATED. COORDINATE REMOVAL OF 3RD LINE OF FIBER OPTICE CABLING WITH MEDIACOM. DO NOT CUT/SEVER CABLING; CABLING IS TO BE REUSED. MINIMIZE SHUTDOWN(S) TO NIGHT/WEEKEND AS MUCH AS POSSIBLE. COORDINATE SHUTDOWN WITH OWNER.
- 3

REROUTE CIRCUITS SERVING DOWNSPOUT HEAT TRACE. COORDINATE HEAT TRACE LOCATIONS AND REVISIONS WITH ROOFING REPLACEMENT AND TUCKPOINTING PROJECTS.
- 4

REMOVE ABANDONED CONDUIT. CONDUIT IS ROUTED UP THROUGH SHEET METAL ENCLOSURE TO ~10'-0" ABOVE GRADE, THEN ROUTES HORIZONTALLY ~15'-0". REMOVE ENTIRE LENGTH OF ABANDONED CONDUIT.
- 5

REMOVE FIRE ALARM GONG. REMOVE CONDUCTORS BACK TO FIRE SPRINKLER SERVICE IN BASEMENT SPRINKLER ROOM. REFER TO SHEET ED1.0 FOR BASEMENT SPRINKLER ROOM LOCATION. SALVAGE GONG FOR REUSE.
- 6

COORDINATE REMOVAL OF PHONE LINES AND SPLICE BOX WITH CENTURYLINK. MINIMIZE SHUTDOWN(S) TO NIGHT/WEEKEND AS MUCH AS POSSIBLE. COORDINATE SHUTDOWN WITH OWNER.



1 ALLEY & PARTIAL FIRST FLOOR ELECTRICAL DEMO PLAN
3/16" = 1'-0"

KEYED NOTES

- 1

ROUTE (2) PARALLEL SETS OF (4) #500 + (1) 2/0 GROUND COPPER CONDUCTORS EACH IN NEW 3" CONDUIT UP TO NEW SERVICE ENTRANCE. REFER TO SHEET E1.1 FOR CONTINUATION.
- 2

ROUTE 3" CONDUITS TO EXISTING MDP AND RE-FEED PANEL.
- 3

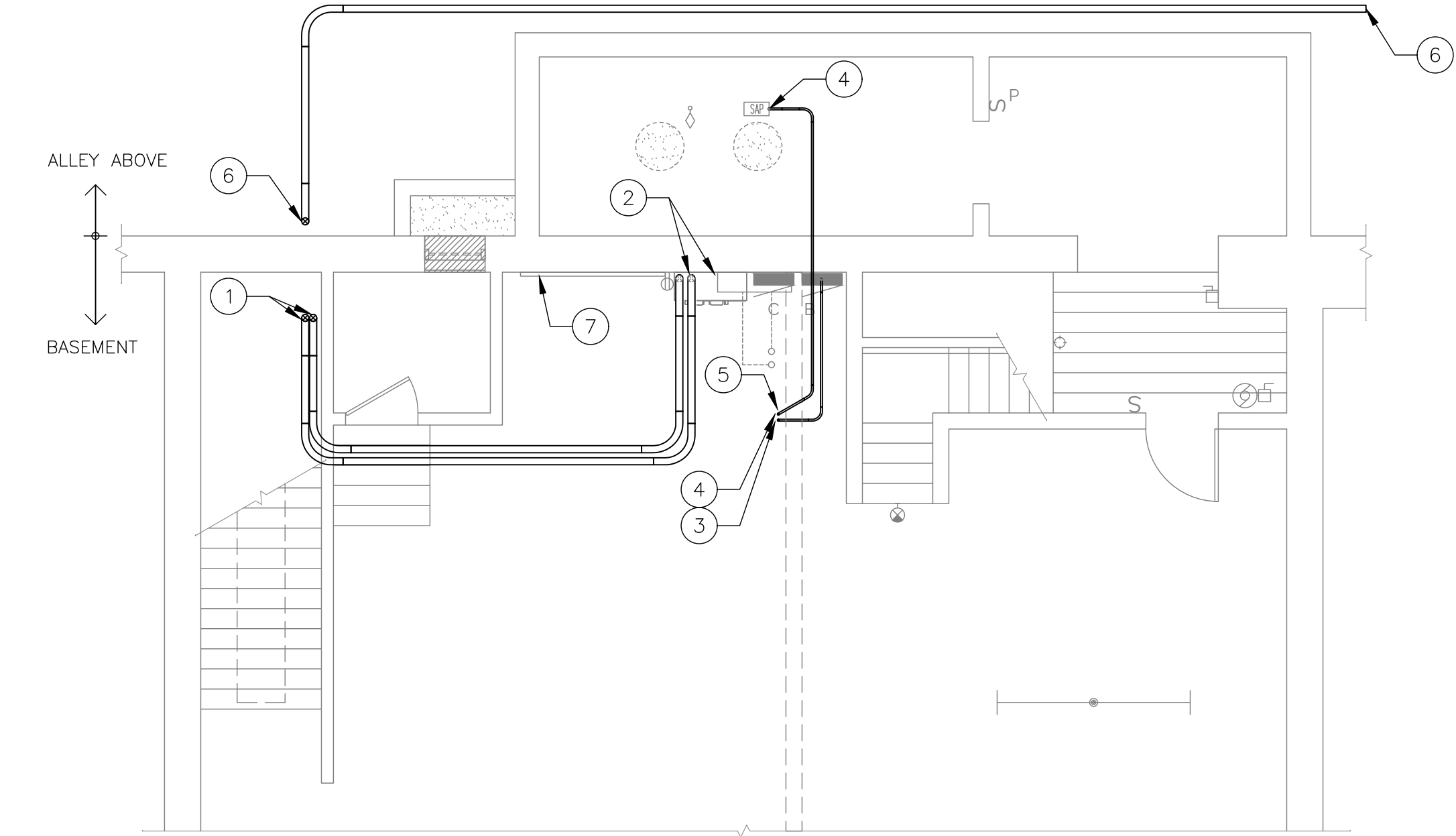
3/4" CONDUIT WITH HEAT TRACE CONDUCTORS UP THROUGH CHASE. REFER TO SHEET E1.1 FOR CONTINUATION.
- 4

ROUTE NEW CONDUIT AND CONDUCTORS FROM NEW GONG LOCATION TO FIRE SPRINKLER ENTRANCE IN BASEMENT SPRINKLER ROOM. REFER TO SHEET E1.1 FOR GONG LOCATION.
- 5

DO NOT DRILL THROUGH EXISTING BEAM. CONTRACTOR SHALL PRE-MARK PENETRATION LOCATIONS FOR OWNER/DESIGN TEAM REVIEW PRIOR TO DRILLING. DRILL PILOT HOLES PRIOR TO CORE-DRILLING TO VERIFY LOCATION DOES NOT PENETRATE BEAM.
- 6

CONTRACTOR SHALL ROUTE (1) 4" CONDUIT TO ALLIANT ENERGY TRANSFORMER APPROXIMATELY 80'-0" NORTH OF SERVICE LOCATION. ALLIANT ENERGY TO PROVIDE CONDUCTORS. CONDUIT SHALL NOT PENETRATE BASEMENT UTILITY ROOM. COORDINATE SCHEDULE WITH ALLIANT ENERGY.
- 7

COORDINATE REROUTING OF NEW TELEPHONE LINES WITH CENTURYLINK. LINES SHALL PARALLEL HEAT TRACE CONDUIT/CONDUCTORS DOWN TO BASEMENT.



1 PARTIAL BASEMENT ELECTRICAL PLAN
3/16" = 1'-0"

939 OFFICE PARK RD., #101
WEST DES MOINES, IA 50265
TEL: 515-440-1681
FAX: 515-440-1687



DOC 1JD
DPP BASEMENT WATER INFILTRATION MITIGATION
745 MAIN ST
DUBUQUE, IOWA 52001

PARTIAL BASEMENT
ELECTRICAL PLAN

DAS NO.
9390.00

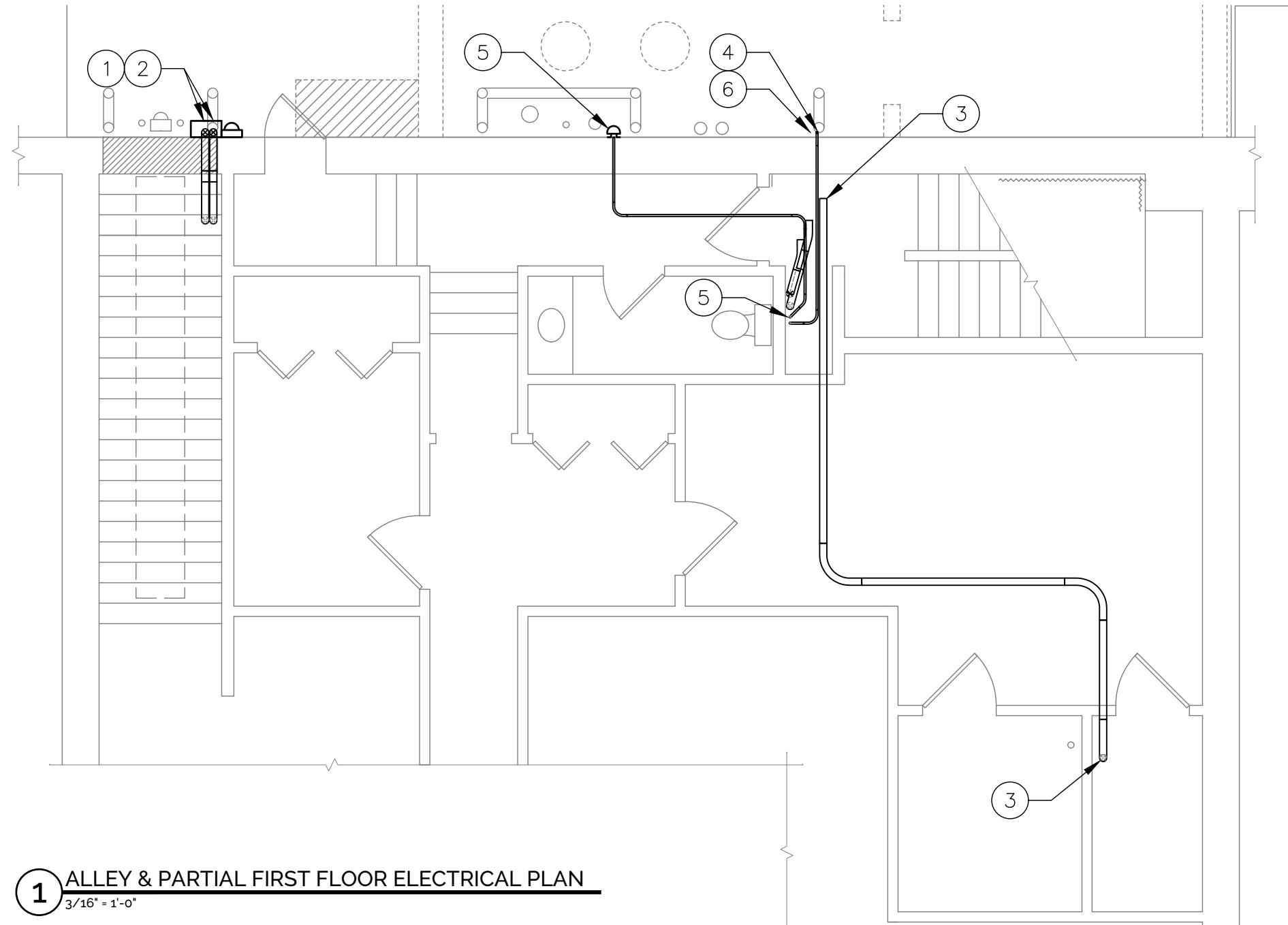
PROJECT NO.
2406

ISSUE DATE
03/05/25

SHEET NUMBER
E1.0

KEYED NOTES

- 1 PROVIDE NEW 600A, 208/3 SERVICE DISCONNECT, ELECTRIC METER, AND C/T CABINET IN ALLEY. COORDINATE WITH ALLIANT ENERGY.
- 2 ROUTE (2) PARALLEL SETS OF (4) #500 + (1) 2/0 GROUND COPPER CONDUCTORS EACH IN NEW 3" CONDUIT FROM NEW SERVICE DISCONNECT, ELECTRIC METER, AND C/T LOCATION IN ALLEY TO MDP. COORDINATE WITH ALLIANT ENERGY.
- 3 REROUTE (2) 12-STRAND FIBER OPTIC CABLES THROUGH 1ST FLOOR CEILING TO DATA CLOSET. PROVIDE SLEEVE AT EACH OPEN END OF CONDUIT. COORDINATE EXACT ROUTING WITH OWNER PRIOR TO START OF WORK. COORDINATE ROUTING OF 3RD FIBER OPTIC CABLE WITH MEDIACOM. MINIMIZE SHUTDOWN(S) TO NIGHT/WEEKEND AS MUCH AS POSSIBLE. COORDINATE SHUTDOWN WITH OWNER.
- 4 ROUTE NEW 3/4" CONDUIT FOR HEAT TRACE ABOVE CORRIDOR CEILING AND PENETRATE EXTERIOR WALL AS HIGH AS POSSIBLE. PROVIDE WEATHER-PROOF JUNCTION BOX ON SOUTH WALL OF 2ND STORY 2'-0" ABOVE LOWER ROOF. REFER TO SHEET A1.3 FOR FURTHER DETAILS.
- 5 REINSTALL SALVAGED FIRE ALARM GONG. ROUTE NEW CONDUIT AND CONDUCTORS THROUGH WALL WITH NEW HEAT TRACE CONDUIT AND RECONNECT TO FIRE SPRINKLER ENTRANCE IN BASEMENT SPRINKLER ROOM. SEE SHEET E1.0 FOR BASEMENT SPRINKLER ROOM LOCATION.
- 6 COORDINATE REROUTING OF NEW TELEPHONE LINES WITH CENTURYLINK. LINES SHALL PARALLEL HEAT TRACE CONDUIT/CONDUCTORS DOWN TO BASEMENT.



1 ALLEY & PARTIAL FIRST FLOOR ELECTRICAL PLAN
3/16" = 1'-0"

DOC 1JD
DPP BASEMENT WATER INFILTRATION MITIGATION
745 MAIN ST
DUBUQUE, IOWA 52001

ALLEY ELECTRICAL
UTILITY PLAN

DAS NO.
9390.00

PROJECT NO.
2406

ISSUE DATE
03/05/25

SHEET NUMBER
E1.1

939 OFFICE PARK RD., #101
WEST DES MOINES, IA 50265
TEL: 515-440-1681
FAX: 515-440-1687

