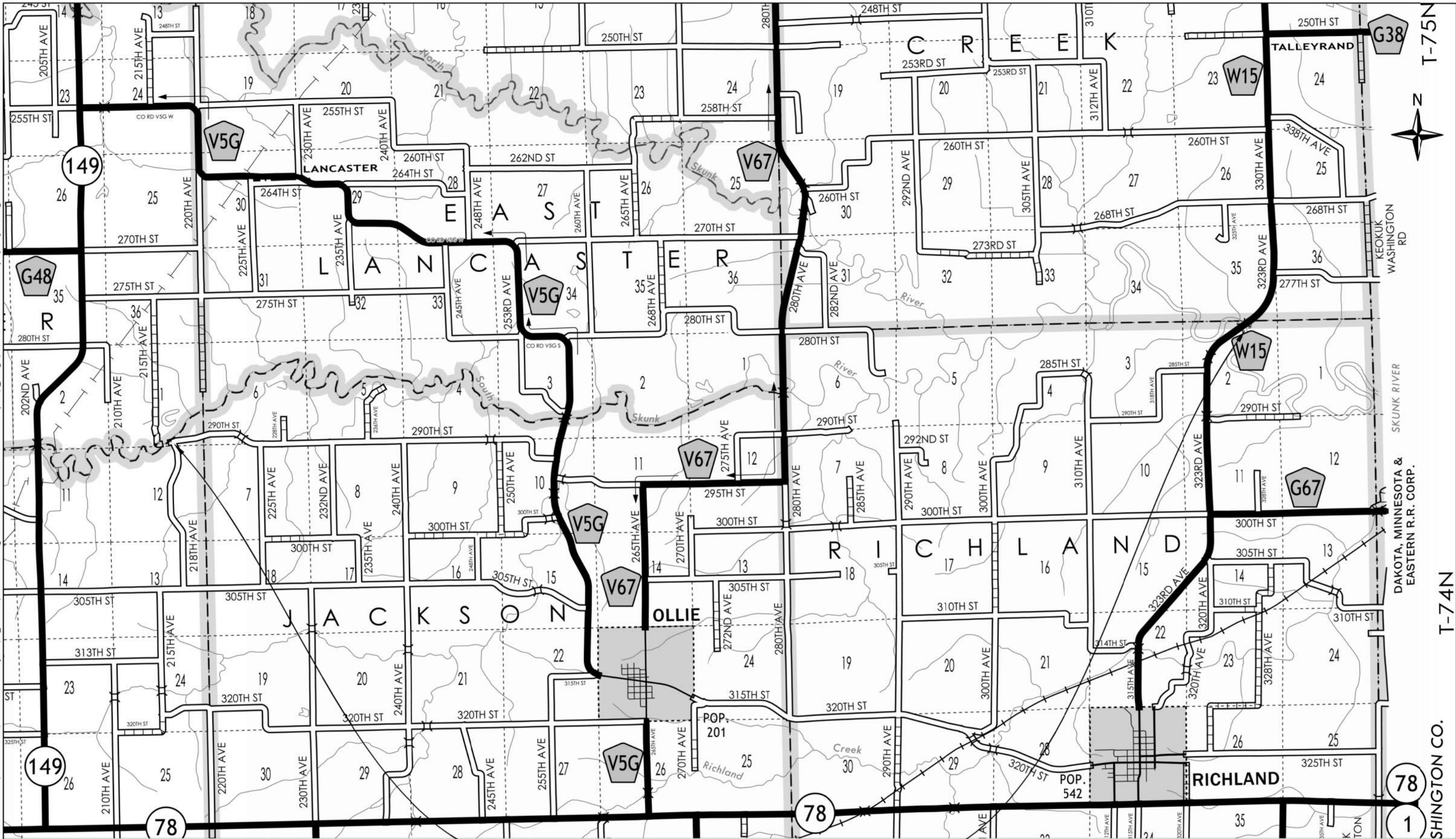


Plot Date: 2/13/2026 9:43 AM G:\Shared drives\DNR LWB ENG Projects\54_Keokuk\26-05-54-01 Sugema WU S. Skunk WMA Riverbank Repair V5_Design\26-05-54-01 Skunk River Riprap Projects.dwg



South Skunk River Access
41.235916
-92.186913

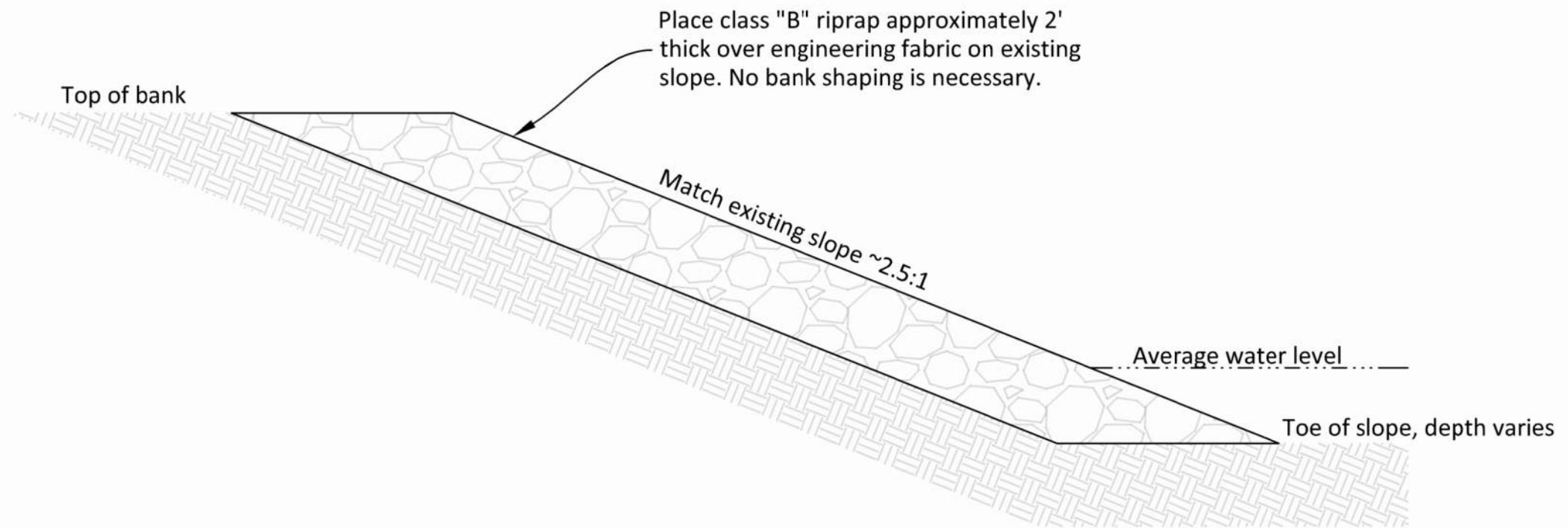
South Skunk River Access

Rubio Access

Rubio Access
41.250140
-91.969781

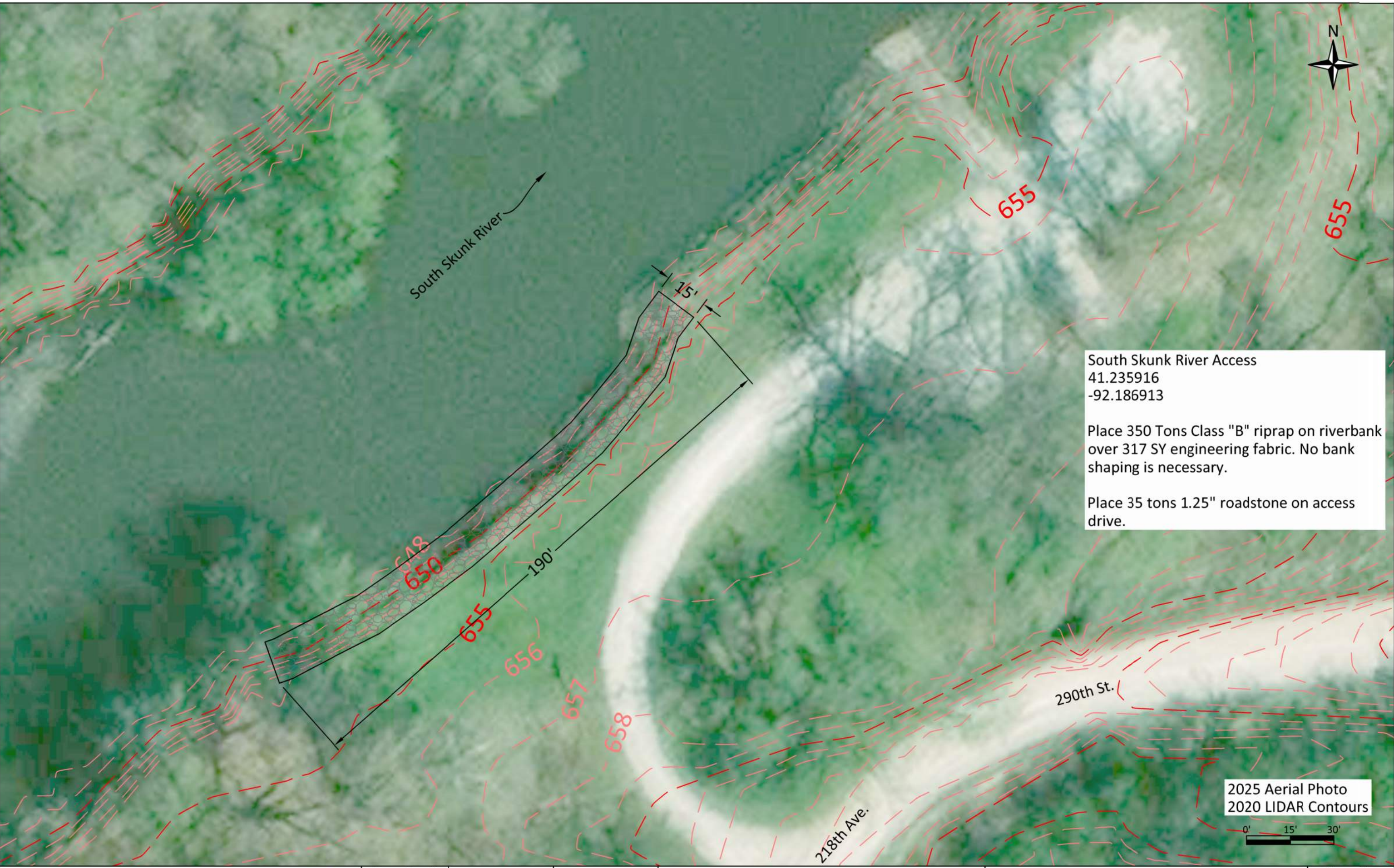


Drawn by: JK	
Revision	Date



River Bank Cross Section

G:\Shared drives\DNR LWB ENG Projects\54_Keokuk\26-05-54-01 Sugema WMA Riverbank Repair V5_Design\26-05-54-01_Skunk River Riprap Projects.dwg
Plot Date: 2/13/2026 4:32 PM



South Skunk River Access
41.235916
-92.186913

Place 350 Tons Class "B" riprap on riverbank over 317 SY engineering fabric. No bank shaping is necessary.

Place 35 tons 1.25" roadstone on access drive.

2025 Aerial Photo
2020 LIDAR Contours



Drawn by: JK	
Revision	Date

Plot Date: 2/13/2026 4:28 PM G:\shared drives\DNR LWB ENG Projects\54_Keokuk\26-05-54-01 Sugema WMA Riverbank Repair V5_Design\26-05-54-01 Skunk River Riprap Projects.dwg



Rubio Access
41.250140
-91.969781

Place 620 Tons Class "B" riprap on riverbank over 556 SY engineering fabric. No bank shaping is necessary.

Place 55 tons 1.25" roadstone on access drive.

2025 Aerial Photo
2010 LIDAR Contours



Drawn by: JK	
Revision	Date