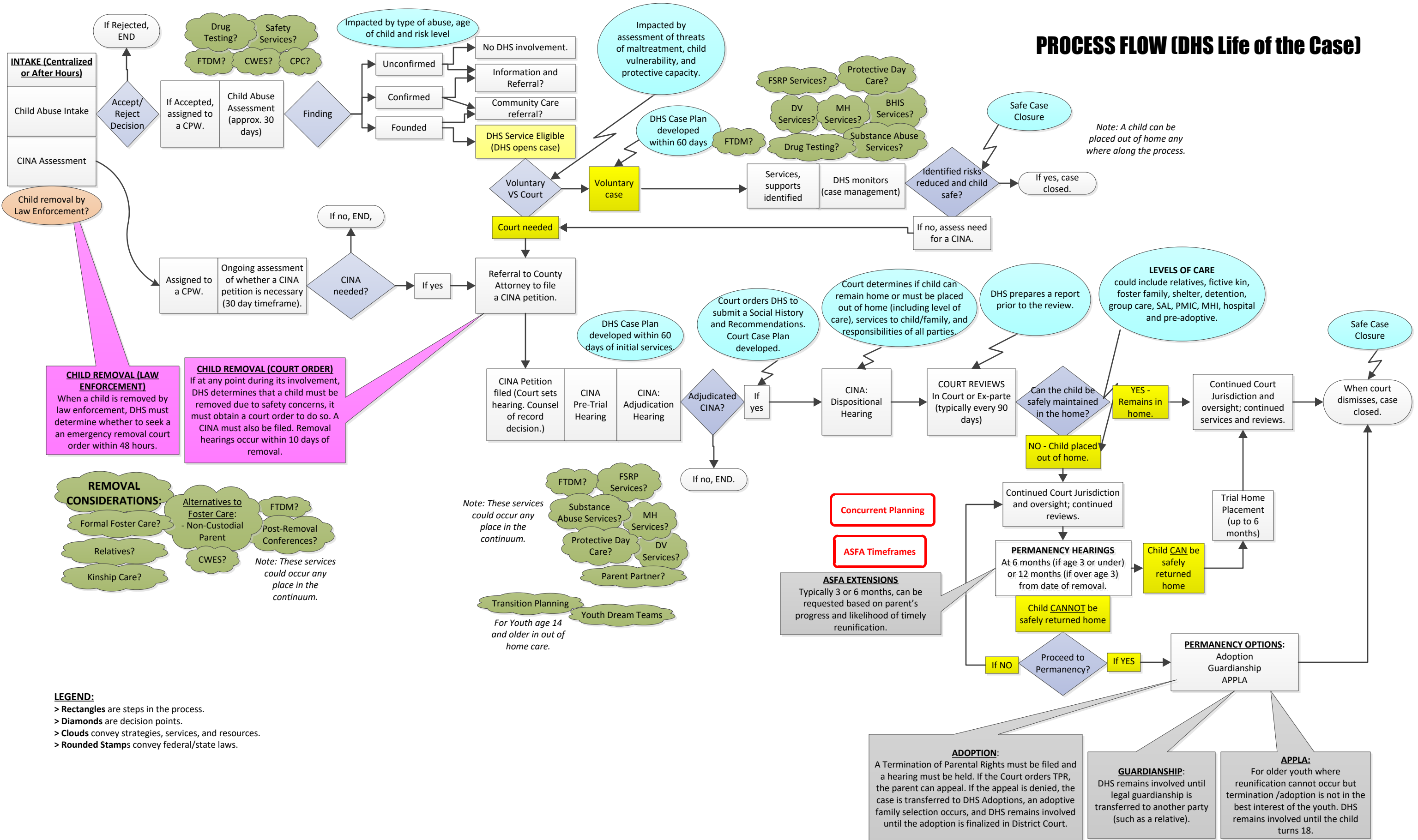


PROCESS FLOW (DHS Life of the Case)



Note: A child can be placed out of home any where along the process.

CHILD REMOVAL (LAW ENFORCEMENT)
When a child is removed by law enforcement, DHS must determine whether to seek an emergency removal court order within 48 hours.

CHILD REMOVAL (COURT ORDER)
If at any point during its involvement, DHS determines that a child must be removed due to safety concerns, it must obtain a court order to do so. A CINA must also be filed. Removal hearings occur within 10 days of removal.

REMOVAL CONSIDERATIONS:

- Formal Foster Care?
- Relatives?
- Kinship Care?
- Alternatives to Foster Care:
 - Non-Custodial Parent
 - Post-Removal Conferences?

Note: These services could occur any place in the continuum.

Note: These services could occur any place in the continuum.

- FTDM?
- FSRP Services?
- Substance Abuse Services?
- MH Services?
- Protective Day Care?
- DV Services?
- Parent Partner?
- Transition Planning
- Youth Dream Teams

For Youth age 14 and older in out of home care.

Concurrent Planning

ASFA Timeframes

ASFA EXTENSIONS
Typically 3 or 6 months, can be requested based on parent's progress and likelihood of timely reunification.

ADOPTION:
A Termination of Parental Rights must be filed and a hearing must be held. If the Court orders TPR, the parent can appeal. If the appeal is denied, the case is transferred to DHS Adoptions, an adoptive family selection occurs, and DHS remains involved until the adoption is finalized in District Court.

GUARDIANSHIP:
DHS remains involved until legal guardianship is transferred to another party (such as a relative).

APPLA:
For older youth where reunification cannot occur but termination /adoption is not in the best interest of the youth. DHS remains involved until the child turns 18.

Exception – Voluntary, over age 18 placements.

LEGEND:

- > Rectangles are steps in the process.
- > Diamonds are decision points.
- > Clouds convey strategies, services, and resources.
- > Rounded Stamps convey federal/state laws.