

## **Addendum 1 for RFB 948200-01**

Project Name: IDB Chiller Replacement

RFB #: 948200-01

DAS Project #: 9482.00

Date: 2/6/2026

Bid Due: February 13<sup>th</sup>, 2026 at 2:00 pm

### **Addendum No. 1 Items:**

1. See attached KCL Engineering Addendum #1 sheet changes & narrative.
  - a. Refer to attached full size sheet ME200
    - i. MODIFY electrical keyed notes as shown
    - ii. ADD notes to drawing as shown
    - iii. ADD notes to CHILLER REFRIGERANT PURGE CONTROL DETAIL as shown
    - iv. MODIFY CHILLER and EXHAUST FAN SCHEDULES as shown
    - v. MODIFY WATER COOLED CHILLER DETAIL AND ROOF FAN MOUNTING DETAIL as shown
2. See attached Meeting Minutes & Sign-in Sheet from January 27<sup>th</sup> Pre-Bid Meeting.
3. Questions and Answers During Pre-bid Walkthrough:
  - o Question 1:
    - Is Floor protection required?
  - o Answer 1:
    - All contractors are required to protect existing finishes when bringing equipment in and out of the Mechanical Room.
  - o Question 2:
    - Is there an existing roof warranty where the exhaust fan is being installed?
  - o Answer 2:
    - No roof warranty where the exhaust fan is being installed.
  - o Question 3:
    - Any special accommodations or limitations on contractor parking?
  - o Answer 3:
    - No parking agreements at this time. Contractors are required to use street parking.
  - o Question 4:
    - Clarity on electrical feeding the existing chiller starter. Where does the power come from for the existing chiller starter? Looking for clarity on how we can lock out the power when the time comes for demolition.
  - o Answer 4:

- Power is assumed to be fed directly off of the main bus tap, going through the bottom of the MDP, into a cabinet on the East wall, then into the chiller starter cabinet. Contractor(s) are required to verify routing and coordinate required electrical shutdowns to make safe for demolition, and to install the new breaker for the new chiller. The existing feed from the bus tap is to remain and be reconfigured for the new breaker.
- Question 5:
  - Is the refrigerant monitor able to be modified with the new chiller?
- Answer 5:
  - The refrigerant monitor and purge system is going to be a new system. Refrigerant purge is to tie-into the existing BAS.
- Question 6:
  - Contractor is wanting to confirm no fire alarm modifications are needed.
- Answer 6:
  - No requirement for fire alarm integration. While it could be a nice to have there is no need to evacuate the building during a leak. Instead this could tie into the BAS so the facility manager(s) are alerted of the issue.

4. Submitted Questions and Answers:

- Question 7:
  - Is the intent to breakdown the chiller in pieces to get it in? Removing door frames still doesn't get the door ways wide enough to get the chiller in.
- Answer 7:
  - The intent is to break down the chiller to get it through the door openings and opening modifications outlined on Sheet A100 of the construction documents.
- Question 8:
  - Does IDB want any closer isolation valves? New gauges psi and temperature? Vibration isolators?
- Answer 8:
  - Isolation valves will indicated in a note added to detail 2/ME200 which is shown in this Addendum. Gauges for PSI & temperature are included in the chiller detail 2/ME200. Vibration isolators are already included in the chiller detail 2/ME200.
- Question 9:
  - Will the mechanical contractor be responsible for carrying the following trades? Commissioning/ TAB, Controls, and Carpenter
- Answer 9:
  - The single bid package on this project is responsible for all applicable scope as outlined in the construction documents. Commissioning will not be part of the project.

## 5. Substitution Requests

- 23 6426.16 Water Cooled Rotary Screw Water Chiller
  - Proposed substitution to Carrier model: 30HXC206
    - See attached substitution request from design team
- 23 6426.16 Water Cooled Rotary Screw Water Chiller
  - Proposed substitution to Dunham Bush USA model: WCFX30TF
    - See attached substitution request from design team

END OF ADDENDUM

Iowa Department of the Blind  
Chiller Replacement  
Addendum #1  
February 6, 2025

This addendum is issued to modify, clarify, or amend the original Project Drawings and Specifications and is hereby made part of the Contract Documents. The Contractor shall be responsible for incorporating items in this Addendum to the Work. The following shall take precedence over anything to the contrary in the Drawings or Specifications.

Mechanical Drawings:

1. ME200 – BOILER ROOM PLAN - MECHANICAL/ELECTRICAL:
  - a. **MODIFY** Electrical Keyed Notes as shown.
  - b. **ADD** notes to drawing as shown.
  - c. **ADD** notes to CHILLER REFRIGERANT PURGE CONTROL DETAIL as shown.
  - d. **MODIFY** CHILLER and EXHAUST FAN SCHEDULES as shown.
  - e. **MODIFY** WATER COOLED CHILLER DETAIL and ROOF FAN MOUNTING DETAIL as shown.
  - f. Refer to attached full size sheet ME200.

Mechanical – Approved Manufacturers:

The following shall be added to specifications as approved manufacturers:

<u>Reference</u>	<u>Equipment Type</u>	<u>Manufacturer</u>
236426.16	Water Cooled Chiller	Carrier, Dunham Bush

End of Mechanical and Electrical Addendum.

GENERAL NOTES:  
1. REFER TO ME200 FOR MECHANICAL AND ELECTRICAL GENERAL NOTES & SYMBOLS.

**ELECTRICAL KEYED NOTES:**

- INSTALL NEW (3) 20A 1P AND (1) 20A 3P BREAKER IN PANEL BR-19. EXISTING PANEL IS SQUARE D NO. INSTALL BREAKERS FOR NEW EF-1 AND SHUNT TRIP.
- EXISTING CONTROLLER FOR CHILLER TO BE REMOVED. INSTALL NEW 800A LSI SHUNT TRIP BREAKER IN PLACE OF EXISTING EQUIPMENT. RECONNECT EXISTING CONDUIT AND CONDUCTORS FROM MDP TO NEW BREAKER. INSTALL TWO SETS OF COPPER IN (3) 500 MCM + (1) #1/0 GND IN 4" CONDUIT FROM BREAKER TO NEW CHILLER.
- CIRCUIT NEW EF-1 TO PANEL BR-19. INSTALL FAN ON 20A 3P BREAKER.
- CIRCUIT NEW CH-1 TO NEW BREAKER. INSTALL BREAKER AS SHOWN IN PICTURE BELOW AND REFERENCE KEYNOTE #2.
- INSTALL NEW EMERGENCY STOP CHILLER REFRIGERANT PUSH BUTTON AT EGRESSING DOORS. THE NTO SHUNT TRIP CHILLER BREAKER. INSTALL SQUARE D GREENNESS 9001 PUSH BUTTON OR ENGINEER APPROVED EQUAL. PROVIDE ENGRAVED LABEL AT DEVICE FOR "CHILLER SHUTDOWN".
- CIRCUIT MOTORIZED LOUVER TO PANEL BR-19. INSTALL ON 20A 1P BREAKER.
- CIRCUIT REFRIGERANT CONTROLLER TO PANEL BR-19. INSTALL ON 20A 1P BREAKER.

EXISTING CONDUIT CAN BE REUSED. EXTEND AS NECESSARY TO NEW CHILLER TERMINATION LOCATION.



REMOVE EXISTING CHILLER BREAKER, CONTROLLER, AND ENCLOSURE. INSTALL NEW BREAKER IN LOCATION.

REUSE EXISTING INCOMING 3 SETS OF 300 MCM CONDUCTORS TO BREAKER.

**EXHAUST FAN SCHEDULE**

REFERENCE	EF-1
MANUFACTURER	GREENHECK
MODEL #	CUE-200-VG
TYPE	UPBLAST
SERVES	CHILLER PURGE EXHAUST
WEIGHT (LBS)	150
DIMENSIONS - L x W x H (INCHES)	37x37x49
AIRFLOW (CFM)	3,000
ESP (IN. W.C.)	0.50
FAN SPEED (RPM)	759
MOTOR DRIVE TYPE	DIRECT
MOTOR SPEED CONTROL	YES
SONES	9
DAMPER TYPE	MOTORIZED
ELECTRICAL DATA	
MOTOR HP	1.0
VOLTAGE - PHASE	208/3
MCA	4.5
MOCF	15
NOTES	1,2,3,4,5,6,7

- NOTES:
- PROVIDE UNIT WITH SINGLE POINT POWER CONNECTION. EC TO PROVIDE DISCONNECT.
  - COORDINATE FINAL CURB MOUNTING HEIGHT WITH OWNER PRIOR TO INSTALLATION.
  - PROVIDE MINIMUM 30" ROOF CURB. DISTANCE MEASURED FROM BOTTOM OF FAN BASE TO TOP OF ROOF.
  - PROVIDE WITH VFD BY FAN MFR. VFD TO BE LOCATED ON WEST WALL OF MECH ROOM.
  - PROVIDE WITH STAINLESS STEEL FASTENERS.
  - EC TO POWER MOTORIZED DAMPER TO OPEN/CLOSE WITH FAN START OR STOP.
  - PROVIDE WITH DAMPER AND 115 VAC ACTUATOR WITH UNIT.

**CHILLER CONTROL SEQUENCE**

**CHILLER SCHEDULE**

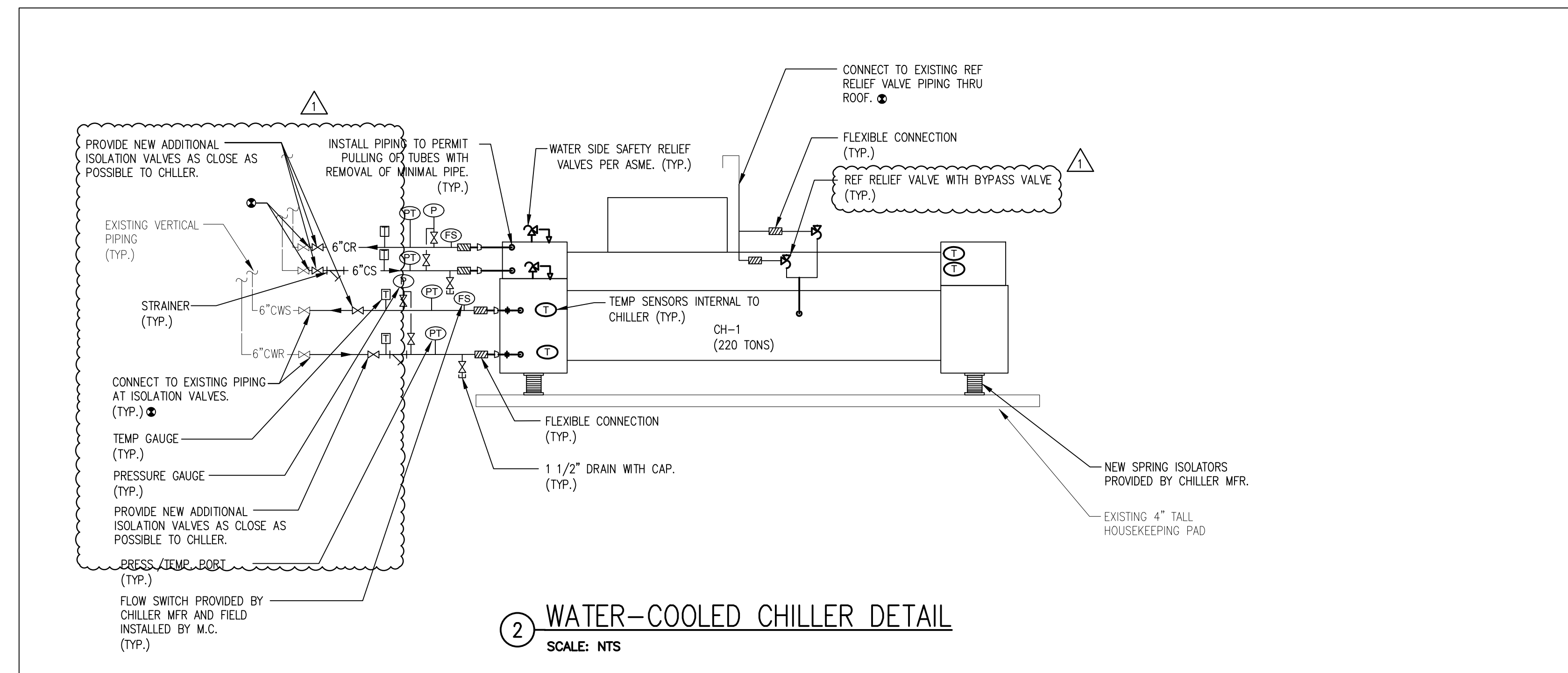
REFERENCE	CH-1
MANUFACTURER	TRANE
MODEL #	RTWD
TYPE	WATER COOLED SCREW
SERVES	BUILDING
OPERATING WEIGHT (LBS)	9,500
DIMENSIONS - L x W x H (INCHES)	136 x 48 x 77
NOMINAL CAPACITY (TON)	220
NET COOLING CAPACITY (TON)	208
FULL LOAD EFFICIENCY (KW/TON)	0.7029
IPLV (KW/TON)	0.5548
REFRIGERANT	R513A
REFRIGERANT CHARGE (LBS)	364
EVAPORATOR FLUID	WATER
EVAPORATOR FLOW (GPM)	497
EVAPORATOR ENT. TEMP. (°F)	54
EVAPORATOR LVG. TEMP. (°F)	44
EVAP. PRESS. DROP (FT HD)	18.20
CONDENSER FLOW (GPM)	655.00
CONDENSER ENT. TEMP. (°F)	85.00
CONDENSER LVG. TEMP. (°F)	95.00
COND. PRESS. DROP (FT HD)	10.00
NUMBER OF CIRCUITS	2
NUMBER OF COMPRESSORS	2
CAPACITY STEPS	4
ELECTRICAL DATA	
VOLTAGE / PHASE	208/3
COMPRESSOR 1 RLA	227.00
COMPRESSOR 2 RLA	281.00
TOTAL UNIT POWER (kW)	146.30
SINGLE POINT MCA	583
SINGLE POINT MOCF	800
STARTER TYPE	WYE-DELTA
NOTES	1 THROUGH 7

- NOTES:
- FACTORY INSTALLED COMPRESSOR SOUND BLANKET
  - UNIT PROVIDED WITH FACTORY INSTALLED FREEZE PROTECTION.
  - PROVIDE WITH SINGLE POINT POWER & NON-FUSED DISCONNECT.
  - UNIT TO HAVE LOW AMBIENT OPERATION CAPABILITIES.
  - PROVIDE WITH 2" SPRING ISOLATORS.
  - ACOUSTICS (SOUND PRESSURE DATA) SHALL BE THE FOLLOWING: 63 HZ - 65 DB, 125 HZ - 67 DB, 250 HZ - 78 DB, 500 HZ - 85 DB, 1K HZ - 74 DB, 2K HZ - 73 DB, 4K HZ - 69 DB, 8K HZ - 64 DB.
  - CHILLER SHALL BE ABLE TO BE BROKEN DOWN TO FIT THROUGH OPENINGS AS SHOWN ON A100.

**HVAC PIPING AND INSULATION SCHEDULE**

SYSTEM	PIPE SIZE (INCHES)	PIPE MATERIAL (NOTE 1)	JOINT TYPE (NOTE 1)	SHUT-OFF VALVE TYPE (NOTE 3)	INSULATION TYPE (NOTE 2)	INSULATION THICKNESS (INCHES)	JACKET (NOTE 4)
CHILLED WATER	2 1/2 - 10	SCHED. 40 STEEL	GROOVED OR WELDED	DUCTILE IRON, BUTTERFLY	MINERAL FIBER	1 1/2	PVC
CONDENSER WATER PIPING	2 1/2 - 10	SCHED. 40 STEEL	GROOVED OR WELDED	DUCTILE IRON, BUTTERFLY	--	--	--

- NOTES:
- REFER TO SPECIFICATIONS FOR FURTHER PIPE MATERIAL, JOINT AND INSTALLATION REQUIREMENTS. PUSH TO CONNECT / PUSH ON TYPE CONNECTIONS ARE NOT ALLOWED.
  - REFER TO SPECIFICATIONS FOR FURTHER INSULATION REQUIREMENTS. INSULATION R-VALUE SHALL MEET ENERGY CODE REQUIREMENTS.
  - REFER TO SPECIFICATIONS FOR FURTHER VALVE REQUIREMENTS.
  - EXPOSED PIPING IN MECHANICAL ROOM SHALL HAVE PVC JACKET (BLUE COLOR FOR CHILLED WATER).



2 WATER-COOLED CHILLER DETAIL  
SCALE: NTS

**CHILLER CONTROL PANELS:**

- FOLLOWING POINTS SHALL BE SENT TO BAS VIA BACNET CONNECTION:
- CHILLER ENABLE/DISABLE (DO)
  - CHILLED WATER SETPOINT (ADJ.) (AO)
  - CHILLED WATER SUPPLY/RETURN TEMPERATURES (AI)
  - CONDENSER WATER SUPPLY/RETURN TEMPERATURES (AI)
  - COMPRESSOR STATUS (DI)
  - PERCENT RLA (AI)
  - KW (AI)
  - ALARM (DI)
  - CHILLED WATER PROOF OF FLOW SWITCH (DI)

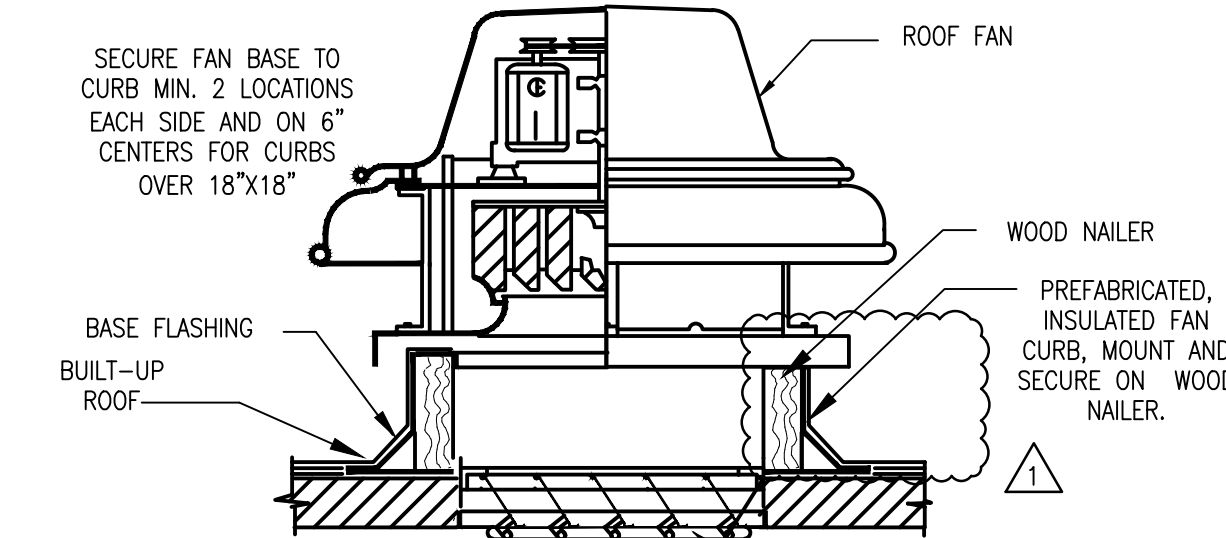
**CHILLER CONTROL SEQUENCE (WATER COOLED CHILLER):**

- WHEN THE BAS ENABLES CHILLER TO START, THE FOLLOWING SHALL OCCUR:
- DEDICATED PRIMARY CHILLED WATER PUMP SHALL BE ENERGIZED.
  - DEDICATED CONDENSER WATER PUMP SHALL BE ENERGIZED.
  - DEDICATED COOLING TOWER FAN SHALL BE ENERGIZED UNLESS TOWER WATER FLOW IS IN BYPASS.

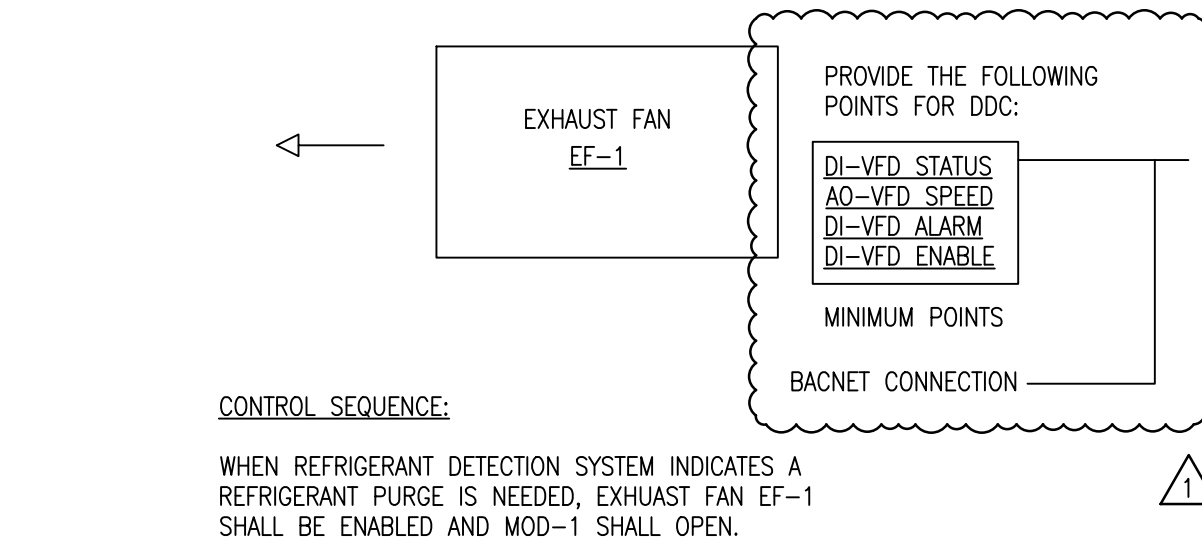
CUT IN 12X18 OPENING HERE AND ADD INSULATED DAMPER FOR REFRIGERANT PURGE MAKEUP AIR.



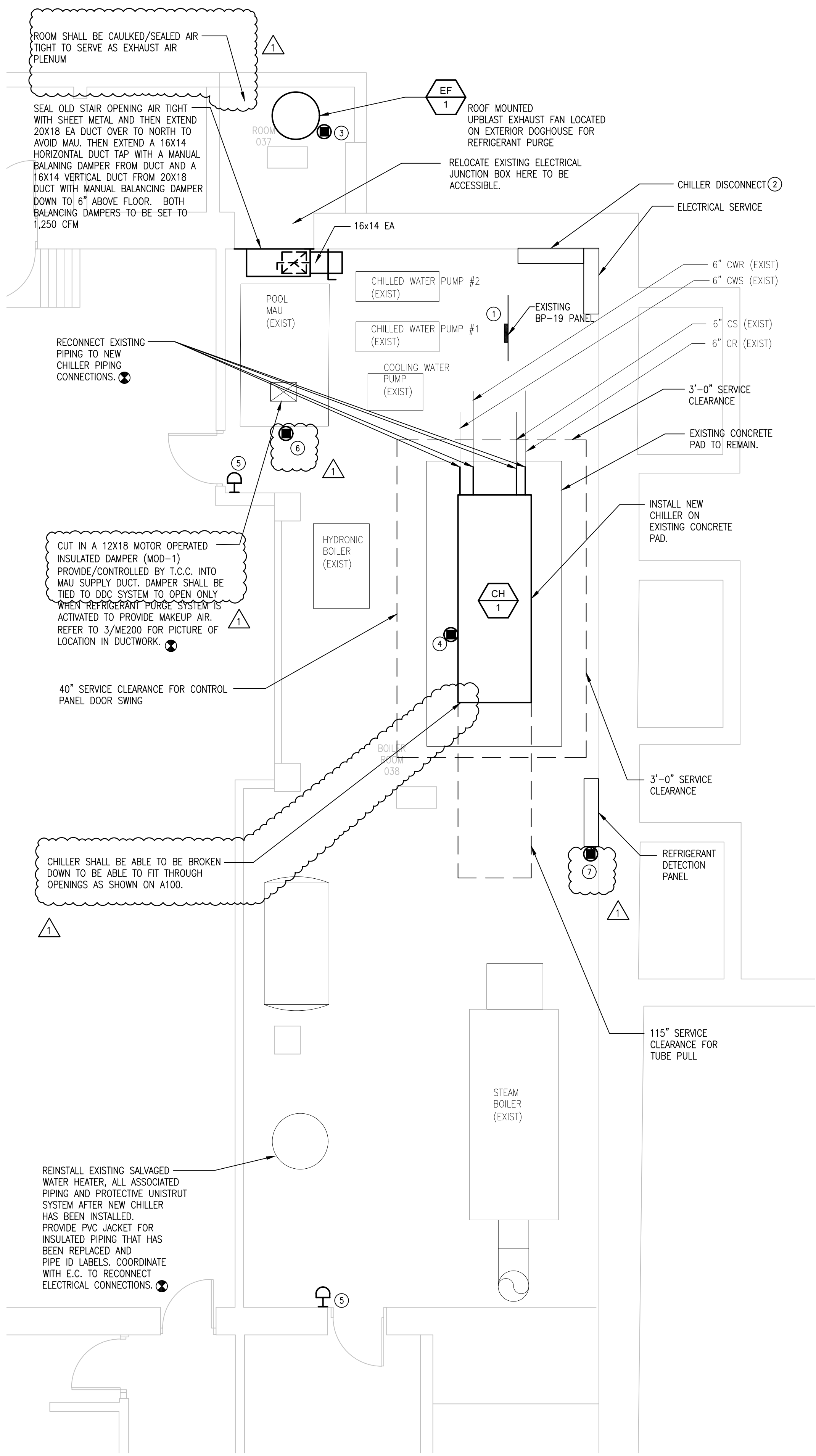
3 EXISTING MAU SUPPLY DUCT  
NOT TO SCALE



4 ROOF FAN MOUNTING DETAIL  
NOT TO SCALE



5 CHILLER REFRIGERANT PURGE CONTROL  
NOT TO SCALE



1 BOILER ROOM PLAN - MECHANICAL/ELECTRICAL  
SCALE: 1/4" = 1'-0"

## RFB Pre-Bid Minutes: Meeting #1

**Meeting Date** Jan 26, 2026 **Meeting Time** 02:00 pm - 03:30 pm Central Time (US & Canada)  
**Meeting Location** 524 4th Street, Des Moines, Iowa 50309 **Video Conferencing** [Join Meeting Link](#)

**Overview** Meeting to allow prospective bidders to visit the site, when possible, and learn more about the project.

**Notes**

**Attachments**

### Scheduled Attendees

Name	Company	Phone Number	Email	Attendance
Randall Walford	Department For The Blind	P: (515) 577-9798	randall.walford@blind.state.ia.us	Present
Parker Badding	McGough Construction		parker.badding@mcgough.com	Present
Aaron Ledebouer	McGough Construction		aaron.ledebouer@mcgough.com	Present
Oliver Shimp	State of Iowa - Department of Administrative Services		oliver.shimp@iowa.gov	Present

### Introduction

No.	Mtg Origin	Title	Assignment	Due Date	Priority	Status
1.1	1	Introductions				Open
<b>Description</b> Attendees - sign in if you have not already.						
<b>Attachments</b> <a href="#">2e0713e8-dd65-4d42-ae8a-73fd1f8f3606.jpg</a>						

### Project Overview

No.	Mtg Origin	Title	Assignment	Due Date	Priority	Status
2.1	1	Project Description				Open
<b>Description</b> <i>The project consists of replacing the existing chiller with modifications to door ways, and existing domestic water heater as illustrated in the construction documents.</i>						
<ul style="list-style-type: none"> <li>• Base bid</li> <li>• Alternates               <ul style="list-style-type: none"> <li>◦ No alternates at this time</li> </ul> </li> <li>• Unit prices</li> </ul>						

No.	Mtg Origin	Title	Assignment	Due Date	Priority	Status
2.2	1	Project Schedule				Open
<p><b>Description</b></p> <ul style="list-style-type: none"> <li>Contract(s) Issued: Starting the week of February 14th, 2026</li> <li>Submittals: After Contracts - Early March</li> <li>Construction: Dependent on lead-time of chiller - anticipate late fall of 2026 - Substantial completion slated for January 22nd, 2027</li> <li>Closeout: Following construction - to be complete within 30 days</li> </ul> <p>A pull-plan session will be held with the successful bid package contractors to finalize the construction schedule.</p> <p>State Holidays: New Year's Day, Martin Luther King Day, Memorial Day, 4th of July, Labor Day, Veterans Day, Thanksgiving and day after Thanksgiving, Christmas Day</p>						

No.	Mtg Origin	Title	Assignment	Due Date	Priority	Status
2.3	1	Site Rules				Open
<p><b>Description</b></p> <ul style="list-style-type: none"> <li>Onsite supervision by Prime Contractor is required at all times when work by that contractor or their subcontractors/suppliers is taking place.</li> <li>Contractors shall provide daily logs for each day they are on site.</li> <li>Construction progress meeting will be established once construction starts.</li> <li>It is of the utmost importance to show respect and courtesy to all staff at all times.</li> <li>Clean all debris, materials, and bring all finishes back to existing conditions in the area they were working in prior to moving to the next area.</li> <li>No smoking, vaping or smokeless tobacco use onsite.</li> </ul> <p><b>Please review spec. section 01 1200 for additional restrictions. Site specific rules below:</b></p> <ul style="list-style-type: none"> <li>Temporary facilities                         <ul style="list-style-type: none"> <li>Use of facilities restrooms is acceptable. Restroom to be used to be coordinated with CM &amp; owner.</li> </ul> </li> <li>Demolished equipment                         <ul style="list-style-type: none"> <li>Removed by contractor</li> </ul> </li> <li>Cell phones</li> <li>Work hours                         <ul style="list-style-type: none"> <li>7:00am - 4:00 pm - Monday thru Friday</li> </ul> </li> <li>View Specification 01 1200 - Contract Summary for more information.</li> </ul>						

**RFB Overview**

No.	Mtg Origin	Title	Assignment	Due Date	Priority	Status
3.1	1	Bid Submission				Open
<p><b>Description</b></p> <ul style="list-style-type: none"> <li>Bids are due: <b>February 13th, 2026 at 2:00 pm</b></li> <li>The Bid shall be submitted to the Issuing Officer through the IMPACS Electronic Procurement System.                         <ul style="list-style-type: none"> <li>Link and information is in the project manual</li> <li>Contractors will need to register prior to bidding</li> </ul> </li> </ul>						

No.	Mtg Origin	Title	Assignment	Due Date	Priority	Status
			<ul style="list-style-type: none"> <li>◦ Bidders will need to register regardless of whether it has already done business with the State of Iowa.</li> <li>◦ Bidders should complete the registration process and ensure the ability to log in as soon as possible to ensure Bids can be submitted on the due date.</li> <li>◦ Please make sure the electronic documents submitted contain any required signatures. Digital signatures will be accepted.</li> </ul> <ul style="list-style-type: none"> <li>• Bid Opening will be held via conference call on <b>February 13th, 2026 at 3:00 pm</b></li> <li>• Contractor shall reference section 00 0116 for the bid submittal checklist                             <ul style="list-style-type: none"> <li>◦ Bid Proposal Information</li> <li>◦ Non Discrimination Clause Information</li> <li>◦ Contractor Targeted Small Business Enterprise Pre-Bid Contract Information</li> <li>◦ Bid Security – 5% of total Bid amount</li> </ul> </li> <li>• Apparent low bidder will be required to submit subcontractor/supplier list 48hrs after the bid opening</li> </ul>			

No.	Mtg Origin	Title	Assignment	Due Date	Priority	Status
3.2	1	Bid Schedule				Open
		<b>Description</b>				
		<ul style="list-style-type: none"> <li>• Questions/Substitutions Due in Writing to <a href="mailto:Construction.Procurement@iowa.gov">Construction.Procurement@iowa.gov</a>: <b>Wednesday February 4th, 2026 at 3:00 pm</b></li> <li>• Addendum Issued: <b>February 6th, 2026</b></li> <li>• Bids Due: <b>February 13th, 2026</b></li> <li>• Tentative NOI Issued: <b>Week of February 16th, 2026</b></li> </ul>				

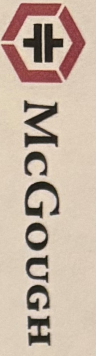
No.	Mtg Origin	Title	Assignment	Due Date	Priority	Status
3.3	1	Administrative Details				Open
		<b>Description</b>				
		<ul style="list-style-type: none"> <li>• Contractors will sign a modified ConsensusDocs 802. Example in the project manual.</li> <li>• Project-specific Certificate of Insurance must be provided prior to contract execution. Follow example in the project manual and limits in the 802.</li> <li>• Project-specific P&amp;P bonds must be provided prior to contract execution.</li> <li>• Successful contractor must turn in their list of subcontractors and suppliers within 48 hours of the bid.</li> <li>• DAS will provide tax exempt certificates upon request.</li> <li>• Procore will be used for all project management, at no cost to the trade contractor.                             <ul style="list-style-type: none"> <li>◦ Submittals, Invoicing, RFIs, ASIs, PRs, RFQs</li> <li>◦ Contracts, Change Orders and Certificates of Substantial and Final Completion will also use DocuSign</li> </ul> </li> <li>• Contractor Schedule of Values shall be broken out as specified in the project manual.                             <ul style="list-style-type: none"> <li>◦ SOV must contain a closeout line item for at least 1% of the total contract value.</li> <li>◦ This line item can only be invoiced once the certificate of final completion has been signed by all parties.</li> </ul> </li> </ul>				

No.	Mtg Origin	Title	Assignment	Due Date	Priority	Status
3.4	1	Pre-Bid Site Visits				Open
		<b>Description</b>				
		<b><i>This is the only pre-bid site visit. If another visit is requested please coordinate with McGough and we will see if the facility is willing and able to accommodate another pre-bid walkthrough.</i></b>				

**Questions**

No.	Mtg Origin	Title	Assignment	Due Date	Priority	Status
4.1	1	Questions				Open
<p><b>Description</b>                      Submit all questions in writing to <a href="mailto:construction.procurement@iowa.gov">construction.procurement@iowa.gov</a>.</p>						
<p><b>Official Documented Meeting Minutes</b></p> <ul style="list-style-type: none"> <li>• Refrigerant monitoring - any concerns with existing equipment working with new chiller?                             <ul style="list-style-type: none"> <li>◦ Design team to address monitoring in Addendum #1</li> </ul> </li> <li>• Clarity on electrical for chiller starter. Where does power come from, and how to safety lock out power for demo                             <ul style="list-style-type: none"> <li>◦ Design team to address in Addendum #1</li> </ul> </li> <li>• Any fire alarm modifications or tie-ins?                             <ul style="list-style-type: none"> <li>◦ Design team to address in Addendum #1</li> </ul> </li> <li>• Floor protection requirement for bringing materials in and out of the project will be addressed in Addendum #1</li> <li>• No existing roof warranty on "dog house" the exhaust fan will be attached to. No specific roofing company to use. We will clarify in Addendum #1.</li> <li>• Contractor parking to be addressed in Addendum #1.</li> </ul>						

These meeting minutes are believed to be an accurate reflection of those items discussed and the conclusions that were reached during the referenced meeting. Please contact State of Iowa - Department of Administrative Services if there are any discrepancies or questions with the content of these minutes.



Sign In Sheet: Pre-Bid Meeting & Walkthrough

Project Name: IDB Chiller Replacement

Date: 1/26/26

	Print Name	Company	Phone	Email
1.	Parker Bedding	McGough	712-790-1370	parker_bedding@mcgough.com
2.	Robert Morris	Aircon Mech	515-243-5500	rmorris@airconmechanical.com
3.	Oliver Skimp	DAS	515-675-4741	Oliver_Skimp@ioware.gov
4.	Scott Walker	Excel Mech	515-577-5028	swalker@excelmechanical.net
5.	Aaron Michael	Excel Mech	515-577-3450	aamichael@excelmechanical.net
6.	David Piper	Modern	515-975-7187	david.piper@moderncompaniesinc.com
7.	Kris Anderson	Modern	515-201-5449	kris.anderson@moderncompaniesinc.com
8.	Joe Mawald	BAKE & DEC.	515-770-7006	jmawald@trakerplastic.com
9.	Mark Levernman	Modern	515-371-3433	Mark.Leverman@moderncompaniesinc.com
10.	JOE TRUBERG	AJHF	697-3550	JOE@AJHFLEW.COM
11.	JOE VEST	VHF Sales	515-494-7164	JOE@VHFSales.com
12.	Math Sweeney	VHF Sales	224-531-0093	math@vhfsales.com
13.	Doug Kikhan	Air Con	605-370-3040	dkikhan@airconelec.com
14.				

# SUBSTITUTION REQUEST FORM

---

Project: Iowa Department for the Blind - Chiller Replacement Substitution Request Number: \_\_\_\_\_  
From: Setpoint Mechanical  
To: Department of Administrative Services Date: 1/21/2026  
A/E Project Number: 9482.00  
Re: Issuing Officer

---

Specification Title: Water Cooled Rotary Screw Water Chiller Description: Water Cooled Rotary Screw Water Chiller  
Section: 23 6426.16 Page: 2 Article/Paragraph: 2.02

---

Proposed Substitution: Carrier  
Manufacturer: Carrier Address: \_\_\_\_\_ Phone: \_\_\_\_\_  
Trade Name: \_\_\_\_\_ Model No.: \_\_\_\_\_

History:  New product  2-5 years old  5-10 yrs old  More than 10 years old

Differences between proposed substitution and specified product: None.  
\_\_\_\_\_  
\_\_\_\_\_

Point-by-point comparative data prepared by contractor and attached - REQUIRED BY A/E

---

Reason for not providing specified item: \_\_\_\_\_  
\_\_\_\_\_

Similar Installation:  
Project: Floyd County Medical Center Architect: N/A  
Address: 800 11th St, Charles City, IA Owner: Floyd County Medical Center  
Date Installed: Installed 2016

Proposed substitution affects other parts of Work:  No  Yes; explain \_\_\_\_\_  
\_\_\_\_\_

---

Supporting Data Attached:  Drawings  Product Data  Samples  Tests  Reports  \_\_\_\_\_

---

# SUBSTITUTION REQUEST FORM

(Continued)

The Undersigned certifies:

- Proposed substitution has been fully investigated and determined to be equal or superior in all respects to specified product.
- Same warranty will be furnished for proposed substitution as for specified product.
- Same maintenance service and source of replacement parts, as applicable, is available.
- Proposed substitution will have no adverse effect on other trades and will not affect or delay progress schedule.
- Cost data as stated above is complete. Claims for additional costs related to accepted substitution which may subsequently become apparent are to be waived.
- Proposed substitution does not affect dimensions and functional clearances.
- Payment will be made for changes to building design, including A/E design, detailing, and construction costs caused by the substitution.
- Coordination, installation, and changes in the Work as necessary for accepted substitution will be complete in all respects.

Submitted by: Austin Deeming

Signed by: Austin Deeming

Firm: Setpoint Mechanical

Address: 8951 Thomas Avenue Johnston, IA 50131

Telephone: 515-974-6497

Attachments: \_\_\_\_\_

---

### A/E's REVIEW AND ACTION

- Substitution approved - Make submittals in accordance with Specification Section 01 3300.
- Substitution approved as noted - Make submittals in accordance with Specification Section 01 3300.
- Substitution rejected - Use specified materials.
- Substitution Request received too late - Use specified materials.

Signed by: *Chad Row*

Date: **2.6.26**

---

Additional Comments:     Contractor     Subcontractor     Supplier     Manufacturer     A/E     \_\_\_\_\_

\_\_\_\_\_  
\_\_\_\_\_  
\_\_\_\_\_

# SUBSTITUTION REQUEST FORM

Project: Iowa Department for the Blind - Chiller Replacement Substitution Request Number: \_\_\_\_\_  
From: VHF Sales INC.  
To: Oliver Shimp, Randy Walford, Adam Douglas, Date: 01/29/2026  
Chad Bass A/E Project Number: 25268  
Re: State of IA, McGough Construction, KCL Engineering

Specification Title: Water Cooled Rotary Screw Water Chiller Description: Screw Chiller Acceptable Manufacturers  
Section: 23 6426.16 Page: 2 Article/Paragraph: 2.02 Acceptable Manufacturers

Proposed Substitution: Dunham Bush WCFX Screw Chiller  
Manufacturer: Dunham Bush USA Address: 1800 SE 38th Ave, Homestead, FL 33035 Phone: (786) 800-9999  
Trade Name: Chiller Model No.: WCFX30TF ANJBR5CR

History:  New product  2-5 years old  5-10 yrs old  More than 10 years old

Differences between proposed substitution and specified product: Chiller is 7" wider and 11" taller but has a full knock down option for shipping and install. Pressure drop over evaporator is 7.3'(H2O) less than basis. & 2'(H2O) higher over condenser. Chiller meets or exceeds performance in capacity otherwise.

Point-by-point comparative data prepared by contractor and attached - REQUIRED BY A/E \*Please refer to pages following this form

Reason for not providing specified item: \_\_\_\_\_  
Competitive Bidding - VHF Sales would supply Dunham-Bush

Similar Installation:  
Project: Supreme Court Judicial Bldg Architect: Resource Consulting Engineers  
Address: 1111 E Court Ave Owner: State of IA  
Des Moines, IA 50319 Date Installed: 2026

Proposed substitution affects other parts of Work:  No  Yes; explain \_\_\_\_\_

Supporting Data Attached:  Drawings  Product Data  Samples  Tests  Reports  \_\_\_\_\_

