

ADDENDUM #5

Project Name:
Iowa School for the Deaf (ISD) Girls Dormitory Repairs
DAS# 9356.00
RFB 935600-01
Addendum #5
Dated: October 10, 2024

This Addendum forms a part of the bidding and contract documents. This Addendum supersedes and supplements all portions of the original bidding and contract documents dated Aug. 14, 2024 with which it conflicts.

ACKNOWLEDGE RECEIPT OF THIS ADDENDUM IN THE SPACE PROVIDED ON THE BID FORM. FAILURE TO DO SO MAY SUBJECT THE BIDDER TO DISQUALIFICATION.

1) CLARIFICATIONS

- A. Coordinate asbestos abatement and abatement schedule with the construction manager. Attached general asbestos abatement locations are for reference, coordinate actual quantities and removals with construction manager, specification sect. 02 080, and Hazardous Building Materials Survey Report.

2) PLANS

- A. No items.

3) QUESTIONS AND CLARIFICATIONS

- A. No items.

4) SUBSTITUTION REQUESTS

- A. No items.

5) ATTACHMENTS

- A. General Asbestos Abatement locations. (4 pages)
- B. Updated Schedule Dated 10/04/2024 (1 page)

END OF ADDENDUM



hgm
 ASSOCIATES INC.
 ENGINEERS ARCHITECTS SURVEYORS
 council bluffs omaha

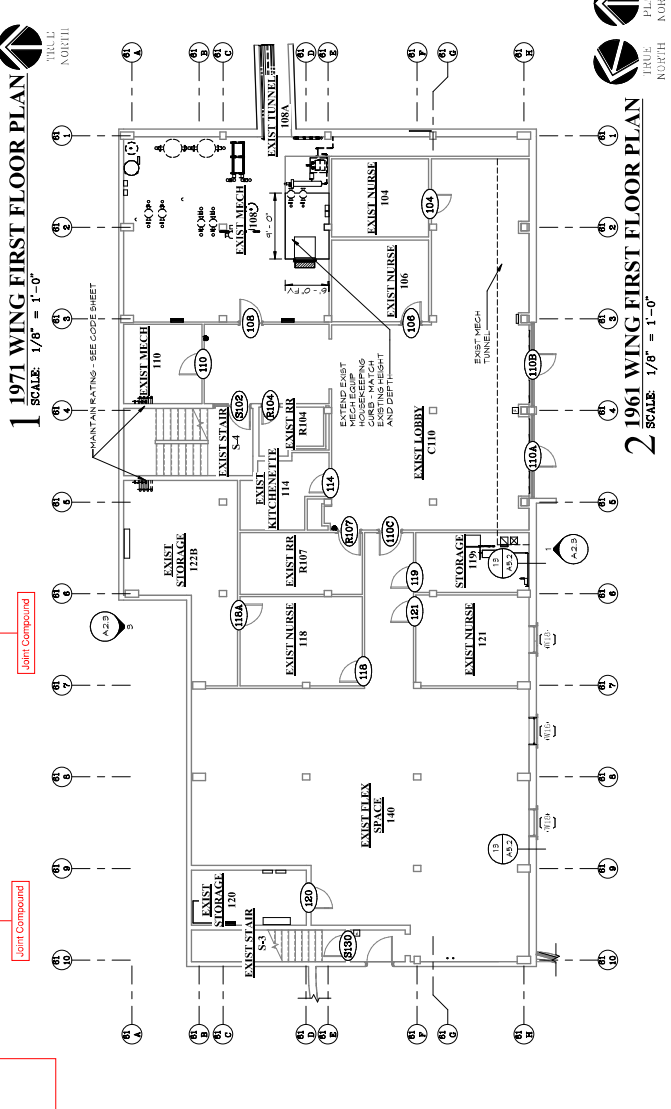
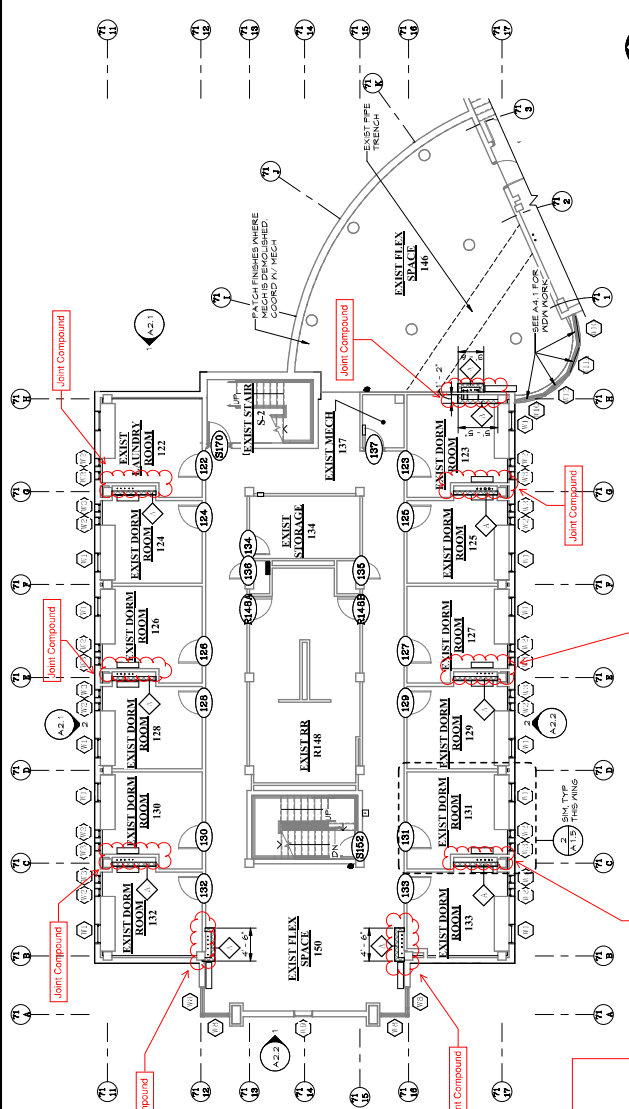
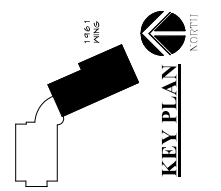
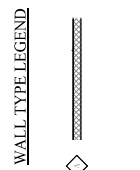
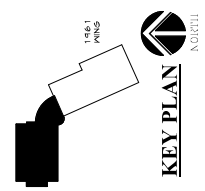
See drawing to be made
 and the use on the project in
 accordance with the
 approved drawings or
 details of the work
 shown on the drawing
 and the use on the project in
 accordance with the
 approved drawings or
 details of the work
 shown on the drawing

REV	DATE	DESCRIPTION
1	DATE 1	DATE 1

PROJECT: DOE ISD GIRLS DORMITORY REPAIRS
 8001 HARRY LANGSTON DR., CORNELL, IOWA 51608
 CLIENT: IOWA DEPARTMENT OF ADMINISTRATIVE SERVICES
 SHEET: FIRST FLOOR PLAN

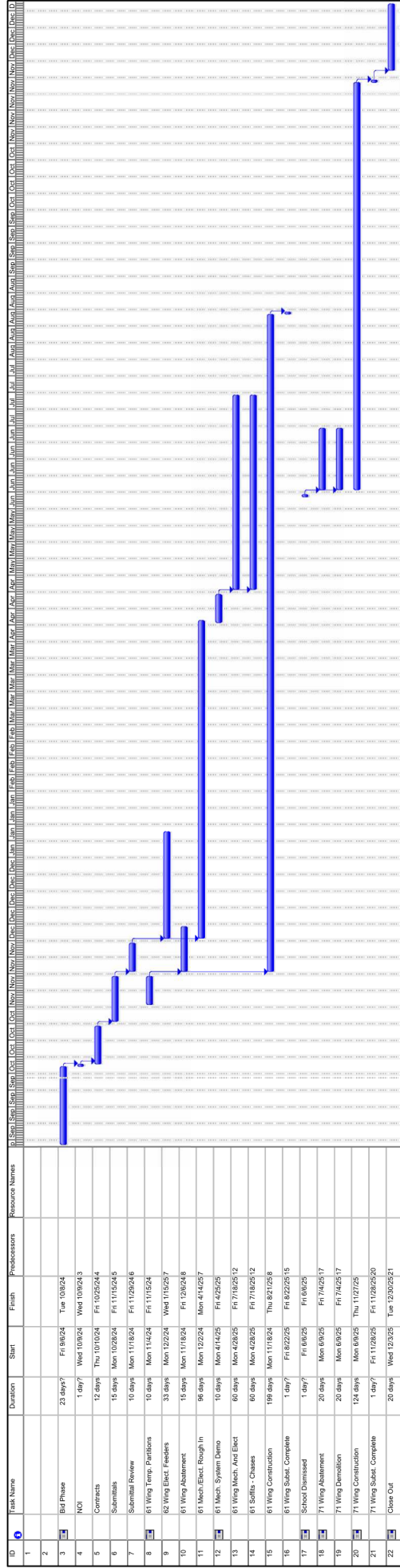
PROJECT NO. 105023A
 9356.00
 RFB #935600-01
 SHEET: A1.2

- FLOOR PLAN NOTES:**
1. INTERFERING CONDITIONS SHALL BE IDENTIFIED AND REMOVED PRIOR TO THE START OF FINISH WORK. ALL INTERFERING CONDITIONS SHALL BE IDENTIFIED AND REMOVED PRIOR TO THE START OF FINISH WORK. ALL INTERFERING CONDITIONS SHALL BE IDENTIFIED AND REMOVED PRIOR TO THE START OF FINISH WORK.
 2. ALL WORK SHALL BE IN ACCORDANCE WITH THE IOWA DEPARTMENT OF ADMINISTRATIVE SERVICES (DAS) STANDARD SPECIFICATIONS FOR CONSTRUCTION.
 3. SEE MEP DRAWINGS FOR PANEL REMOVAL AND INSTALLATION, CUT PATCH, AND FINISH EXISTING OPEN AS REQUIRED.
 4. ALL WORK SHALL BE IN ACCORDANCE WITH THE IOWA DEPARTMENT OF ADMINISTRATIVE SERVICES (DAS) STANDARD SPECIFICATIONS FOR CONSTRUCTION.
 5. SEE MEP DRAWINGS FOR STEEL LIGHT BLOCK/VAL PROOFER METAL PLATE TO COVER VENTURE OPENINGS IN BLOCK WALL PAINT METAL PLATE TO MATCH EXIST WALL.
 6. CONTRACTOR SHALL PROTECT ALL EXISTING WOOD TRIM AROUND DOORS AND WINDOWS.
 7. CONTRACTOR SHALL PROTECT ALL FINED FURNITURE INCLUDING BUT NOT LIMITED TO DESKS.
 8. CONTRACTOR SHALL PROTECT ALL PAINTED MURALS ON COLUMN WALLS AND CEILING.
 9. REFER TO GENERAL SHEET FOR FINISHES.
 10. CONTRACTOR SHALL PROVIDE LIVE HOOK UP OF MECH PIPE ASSEMBLY AND FRAMING IN ROOMS 203 AND 211 THIS SHALL BE APPROVED BY ARCHITECT AND ENGINEER BEFORE ADDITIONAL WORK IS STARTED.
 11. CONTRACTOR SHALL PROVIDE STEEL LIGHT BLOCK/VAL PROOFER METAL PLATE TO COVER VENTURE OPENINGS IN BLOCK WALL PAINT METAL PLATE TO MATCH EXIST WALL.
 12. RAIL FLOOR COMPOUND IN THE 1971 WING CONTAINS ASBESTOS MATERIAL PLEASE COORDINATE WITH ABATEMENT CONTRACTOR. SEE ASBESTOS REPORT IN SPECS.



General Asbestos Abatement Locations
 Addendum #005
 10-04-2024

See Specification Section 02080
 61 Wing Abatement - Starts November 2024
 71 Wing Abatement - Starts June 2025



Reference Phasing Plans G1.6 and G1.7 for Phasing Notes.