



# Atlantic Restroom



Cap waterline at curb stop and remove extension

Demolish restroom and sidewalk

Plug sanitary service line with concrete

Demolish floor slab, footings and sidewalk

# Atlantic Shelter Foundation and Slab



## Note: ATLANTIC RESTROOM

- Contractor to demolish the restroom, foundation, and concrete flatwork.
- Water service to be capped at the curb stop with the curb stop extension removed. Contractor to furnish and install a T-post marker at the curb stop.
- Plug the sanitary sewer service line at the manhole with concrete.
- Electrical service to be removed at the transformer.

## ATLANTIC SHELTER FOUNDATION AND SLAB

This shelter was previously demolished. Concrete flatwork and footings remain. Contractor to demolish the concrete slab, sidewalk, and footings.

## FINAL GRADING

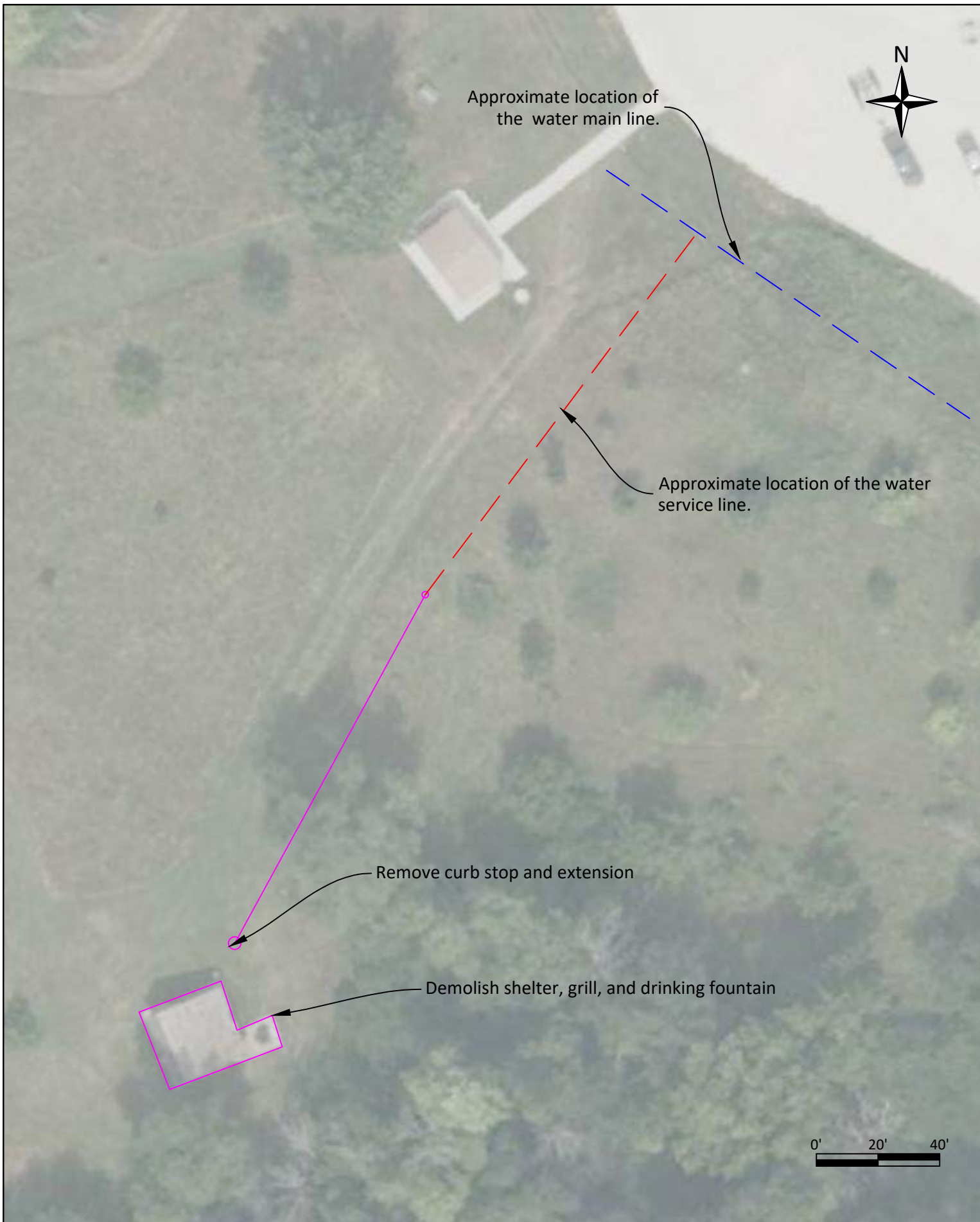
Final grade to be shaped to drain. Fill material is available adjacent to the Atlantic Shelter Slab and Foundation. All disturbed ground shall be seeded with IDOT permanent rural mix. Seeding, fertilizing, and mulch are included in the site restoration line item.

G:\Shared drives\DNR LWB ENG Projects\77\_Polk\25-02-77-04 Big Creek Shelter & Restroom Demolitions\25-02-77-04 Big Creek Shelter Demo 2.dwg

Plot Date: 3/17/2026 4:00 PM

Drawn by: hd	
Revision	Date

G:\Shared drives\DNR LWB ENG Projects\77\_Polk\25-02-77-04 Big Creek Shelter & Restroom Demolitions\25-02-77-04 Big Creek Shelter Demo 2.dwg  
Plot Date: 3/6/2026 12:27 PM



**Note:**  
**GANNETT SHELTER**

Contractor to demolish the shelter, grill, drinking fountain, foundations, and concrete flatwork.

Water service to be capped at the tee connection with the main. The existing waterline is plastic and does not have a tracer wire. Contractor is responsible for locating tee. The existing curb stop and extension are to be removed.

**FINAL GRADING**

Final grade to be shaped to drain. Fill material is available adjacent to the Atlantic Shelter Slab and Foundation. All disturbed ground shall be seeded with IDOT permanent rural mix. Seeding, fertilizing, and mulch are included in the site restoration line item.

**GANNETT SHELTER**



Drawn by: hd	
Revision	Date


Project Number:  
25-02-77-04

Restroom and Shelter Demolitions  
Big Creek State Park, Polk County

Project Overview

G:\Shared drives\DNR LWB ENG Projects\77\_Polk\25-02-77-04 Big Creek Shelter & Restroom Demolitions\25-02-77-04 Big Creek Shelter Demo 2.dwg

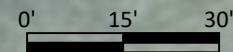
Plot Date: 3/6/2026 11:00 AM



Plug manhole connection

Cap waterline at curb stop and remove extension

Demolish restroom and sidewalk



© 2026 Microsoft Corporation

Note:  
HAMPTON RESTROOM

Contractor to demolish the restroom, foundation, and concrete flatwork. Miscellaneous plumbing equipment currently stored in the restroom is also to be removed and disposed of.

Water service to be capped at the curb stop with the curb stop extension removed. Contractor to furnish and install a T-post marker at the curb stop.

Electrical service to be removed at the transformer.

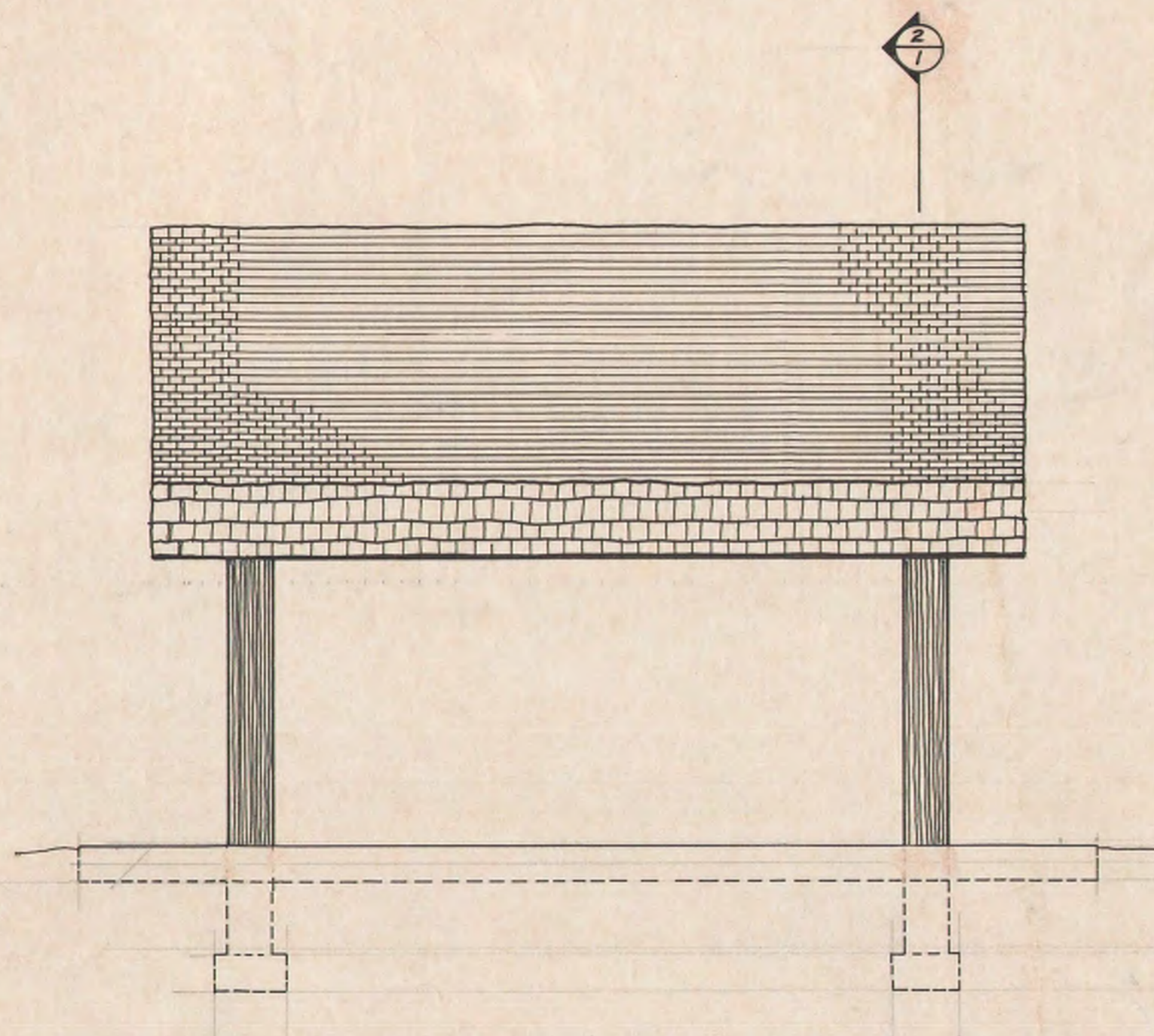
FINAL GRADING

Final grade to be shaped to drain. Fill material is available adjacent to the Atlantic Shelter Slab and Foundation. All disturbed ground shall be seeded with IDOT permanent rural mix. Seeding, fertilizing, and mulch are included in the site restoration line item.

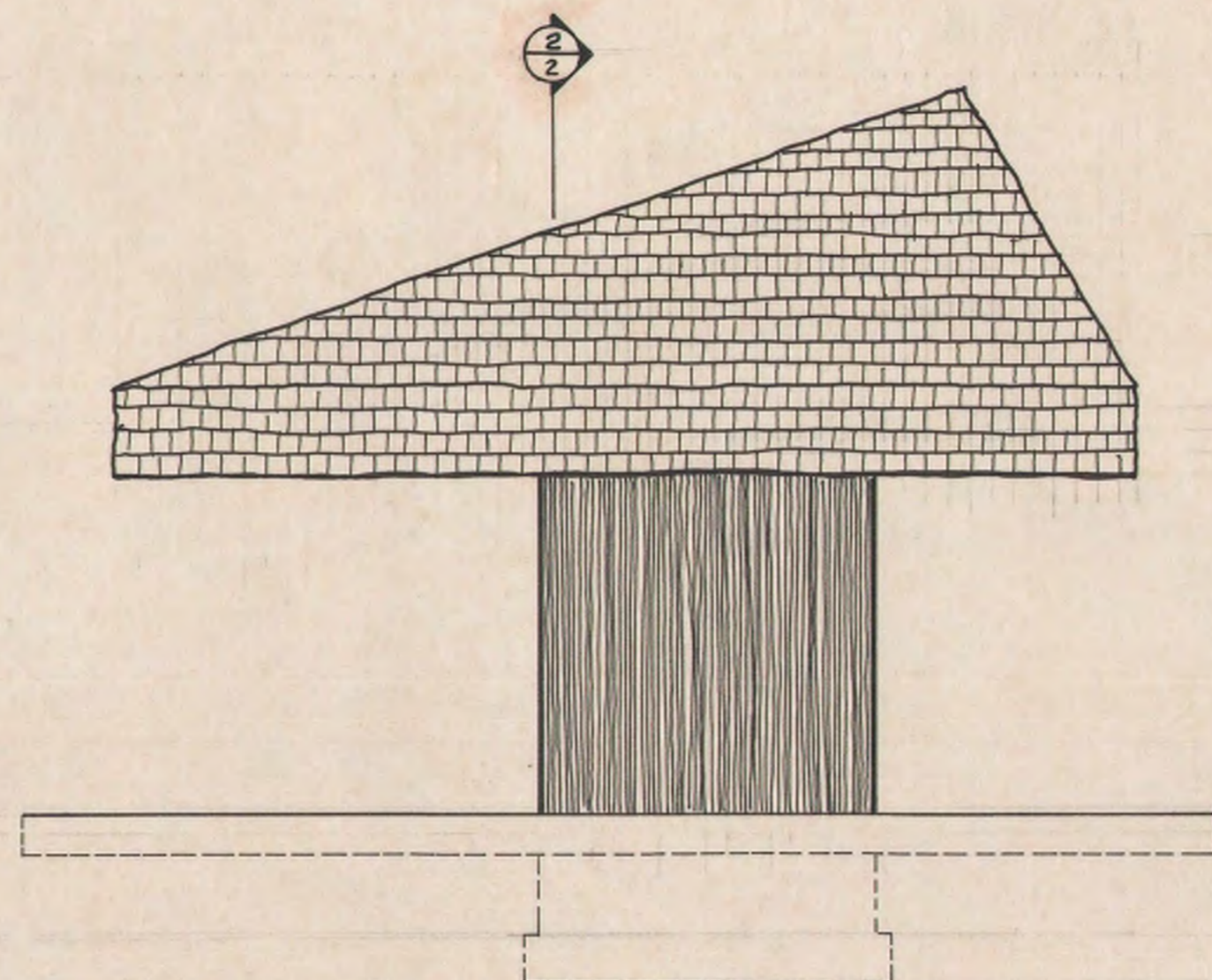
## HAMPTON RESTROOM



Drawn by: hd	
Revision	Date

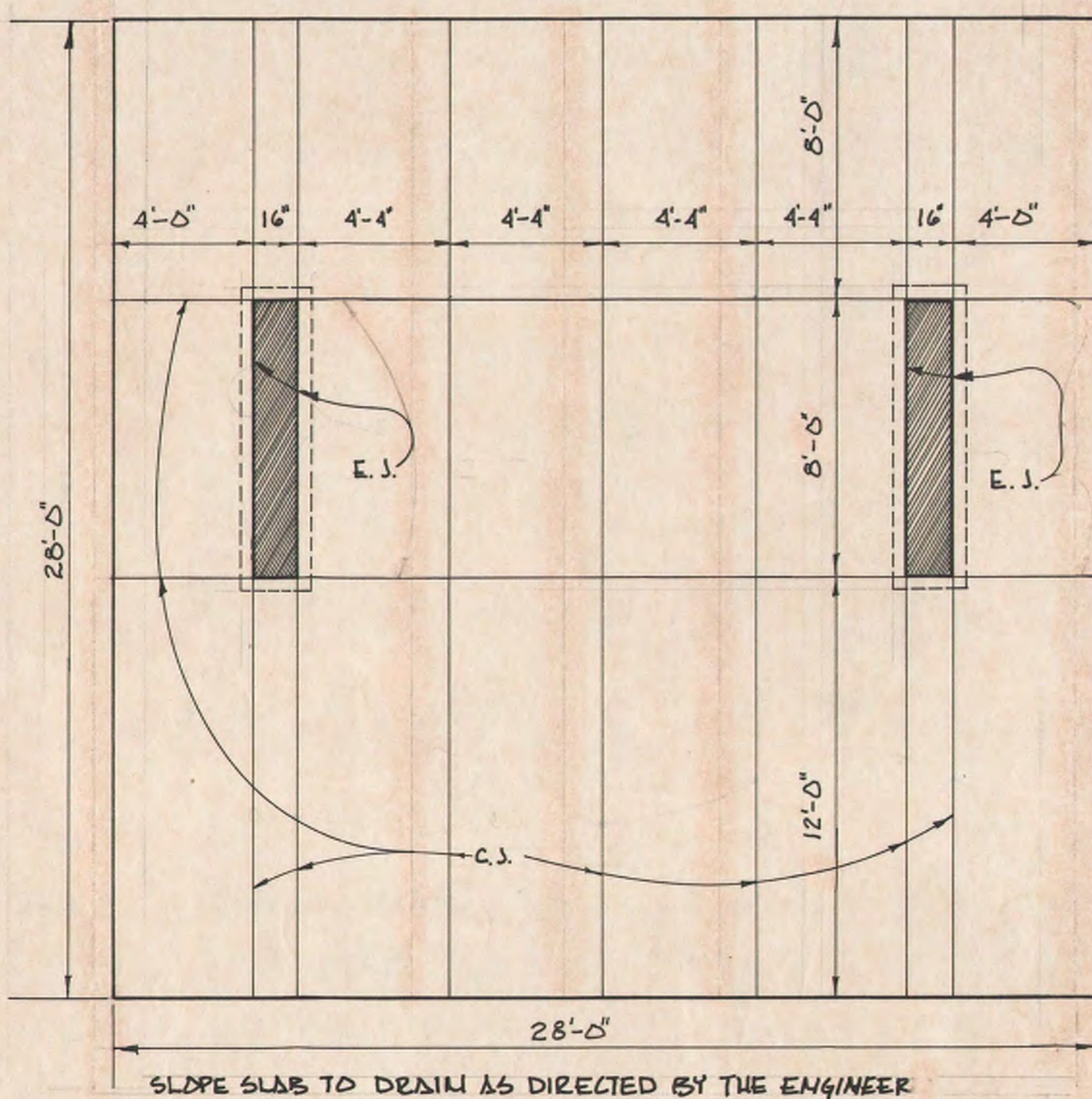


4 ELEVATION  
1 SCALE: 1/4" = 1'-0"

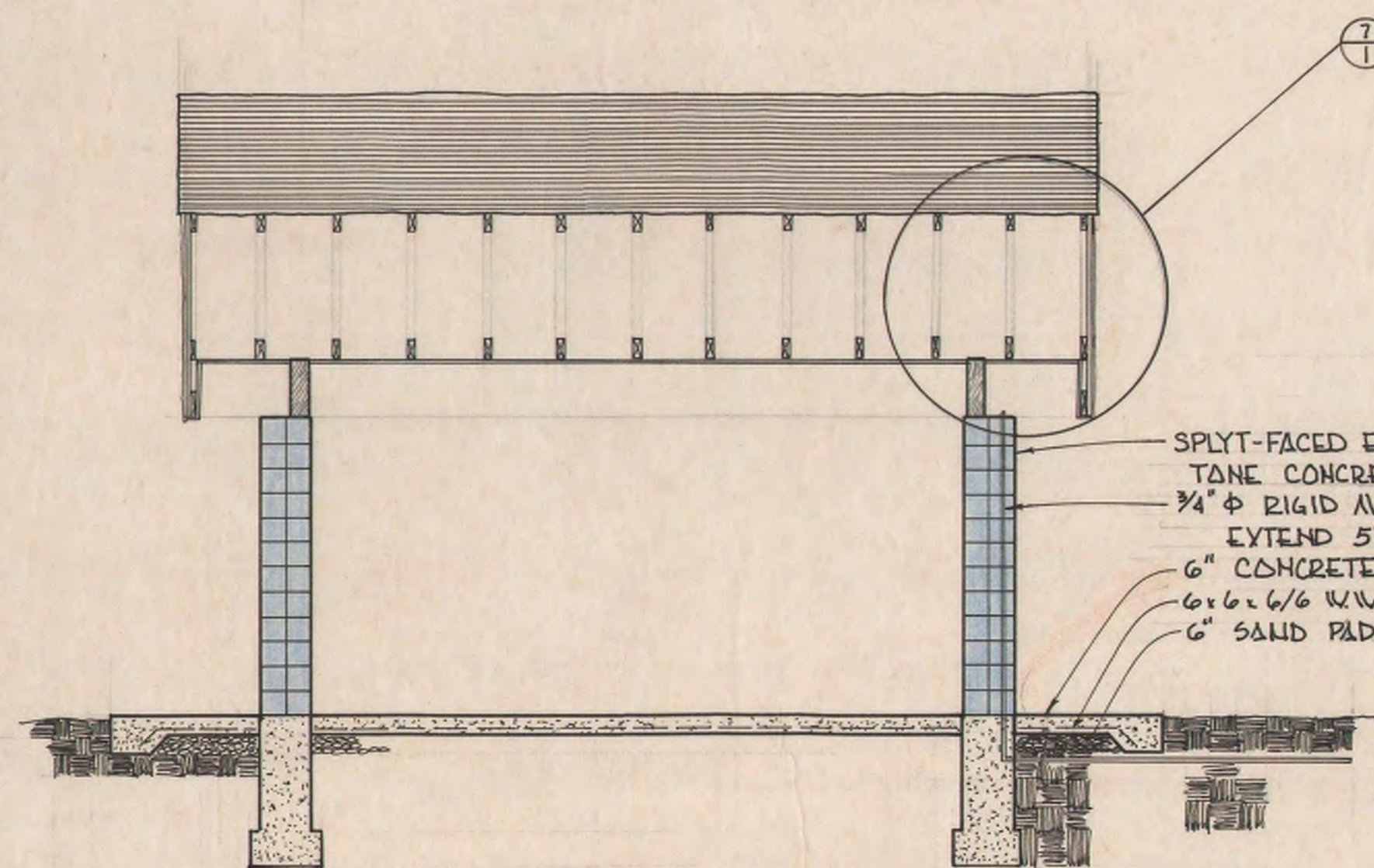


5 ELEVATION  
1 SCALE: 1/4" = 1'-0"

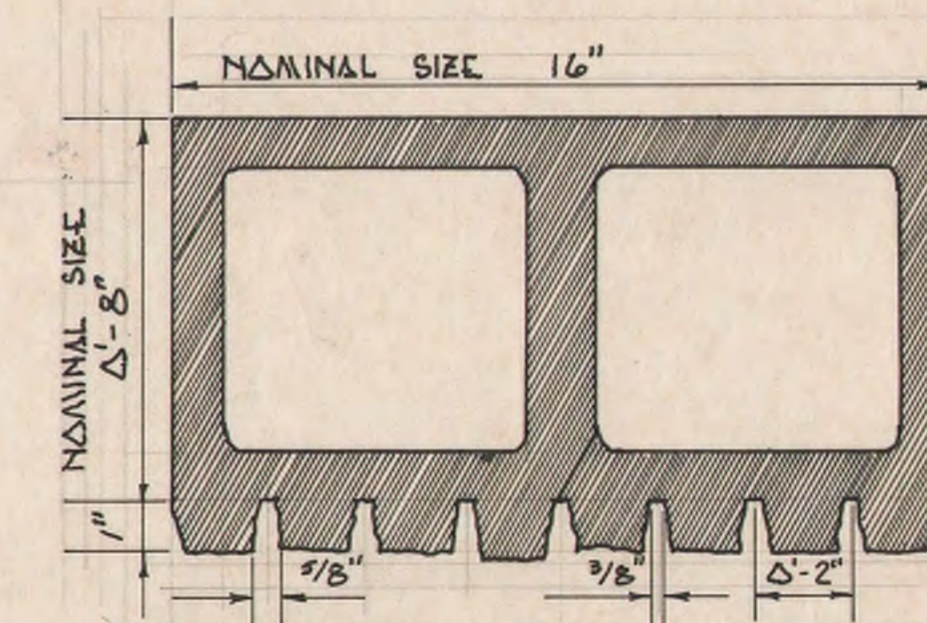
NOTE: MORTAR IS TO BE WIPED FLUSH WITH THE BLOCK FACE. THE MASON SHALL FOLLOW THE CONTOURS OF THE RIBS OF THE BLOCK TO GIVE THE APPEARANCE OF A CONTINUOUS VERTICAL RIB. COLOR MEDIUM BUFF #2312 BY TAMMS



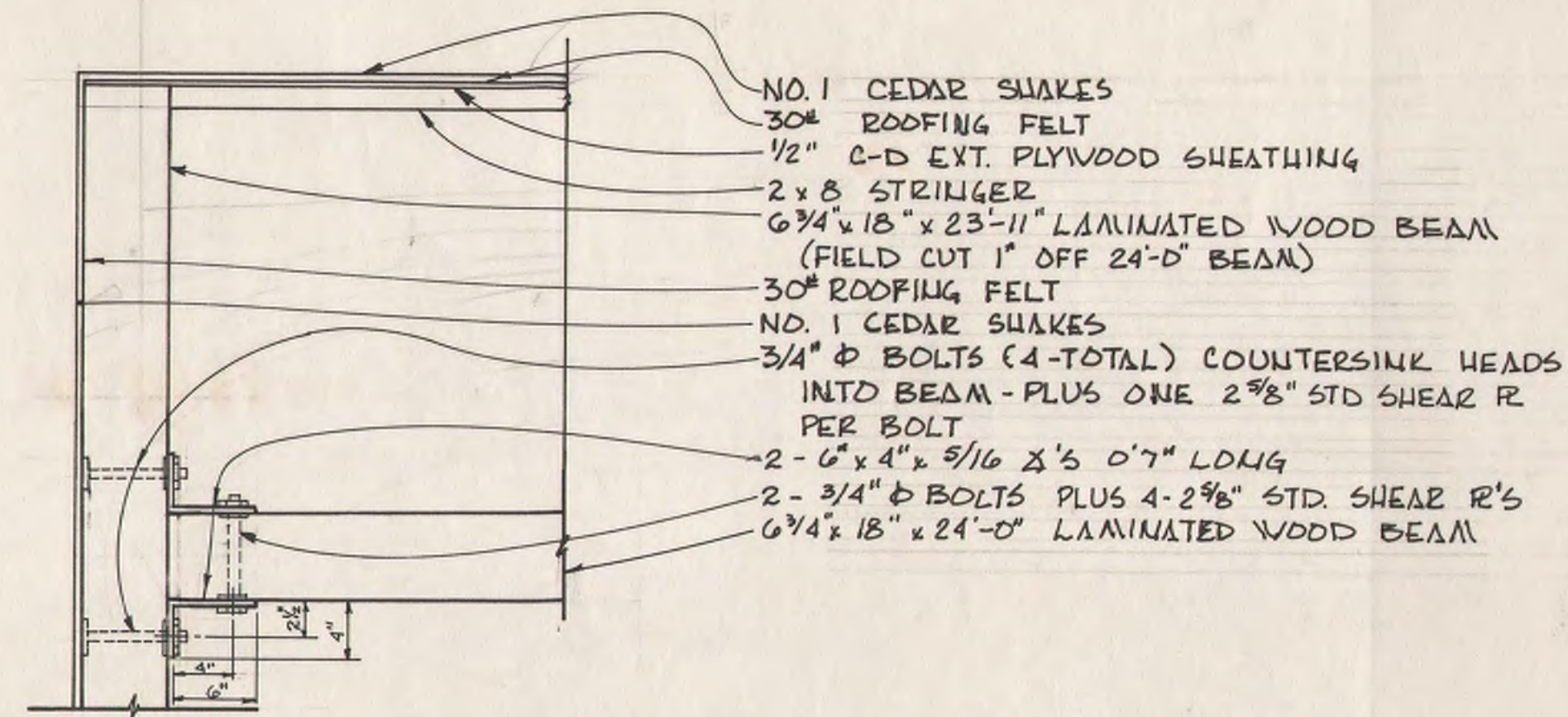
1 SLAB PLAN  
1 SCALE: 1/4" = 1'-0"



2 SECTION  
1 SCALE: 1/4" = 1'-0"



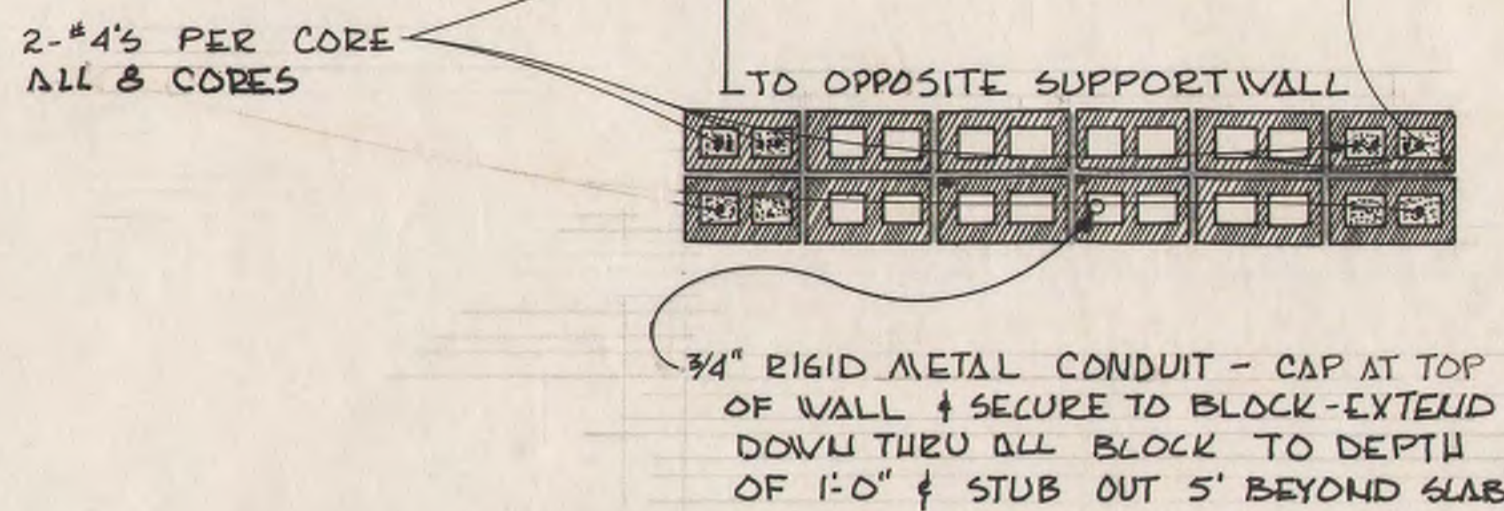
3 SPLIT FACED EARTH TONE CONCRETE BLOCK  
1 SCALE: 1/4" = 1'-0"



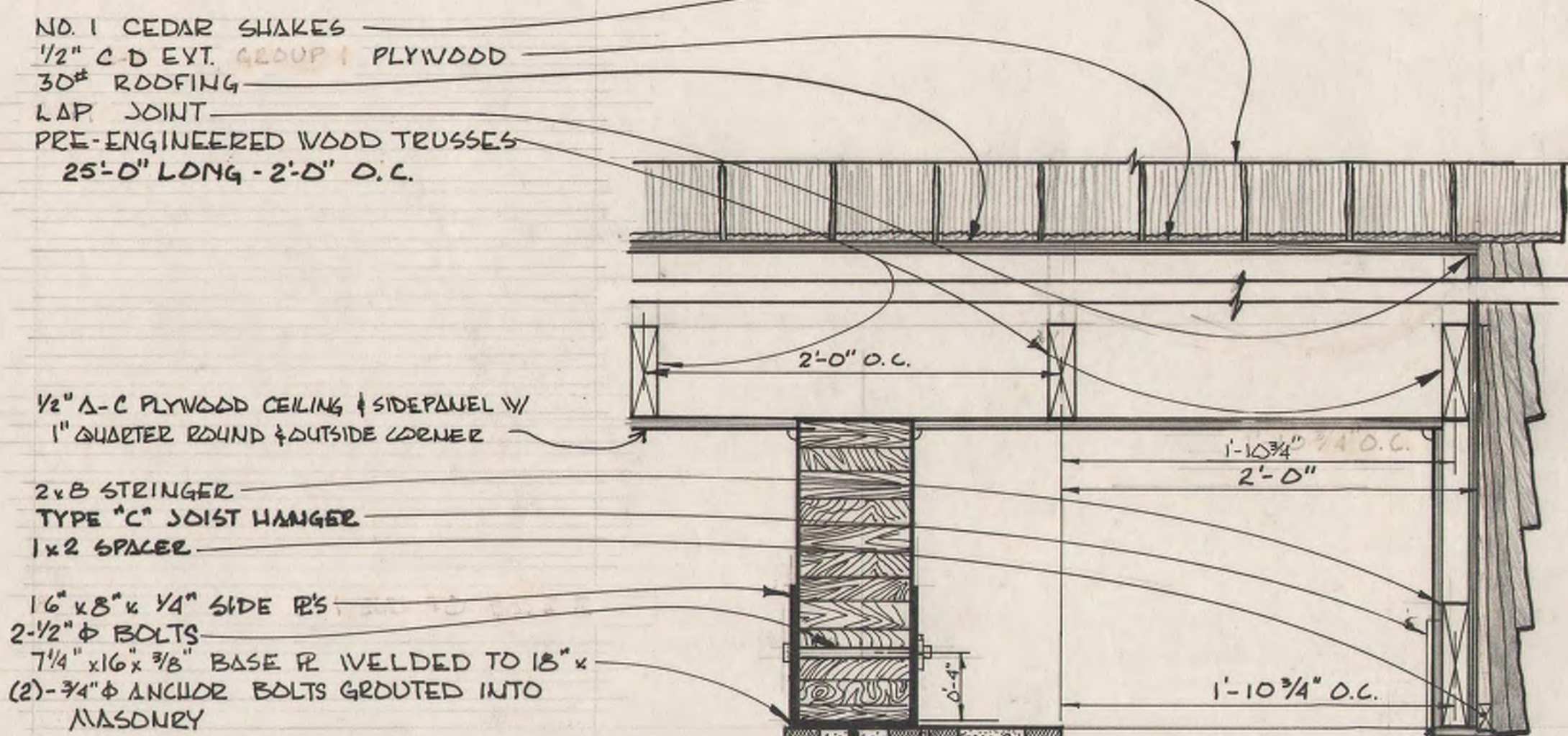
5 DETAIL - BEAM CONNECTION  
 2 SCALE 1" = 1'-0"

DESIGN CRITERIA

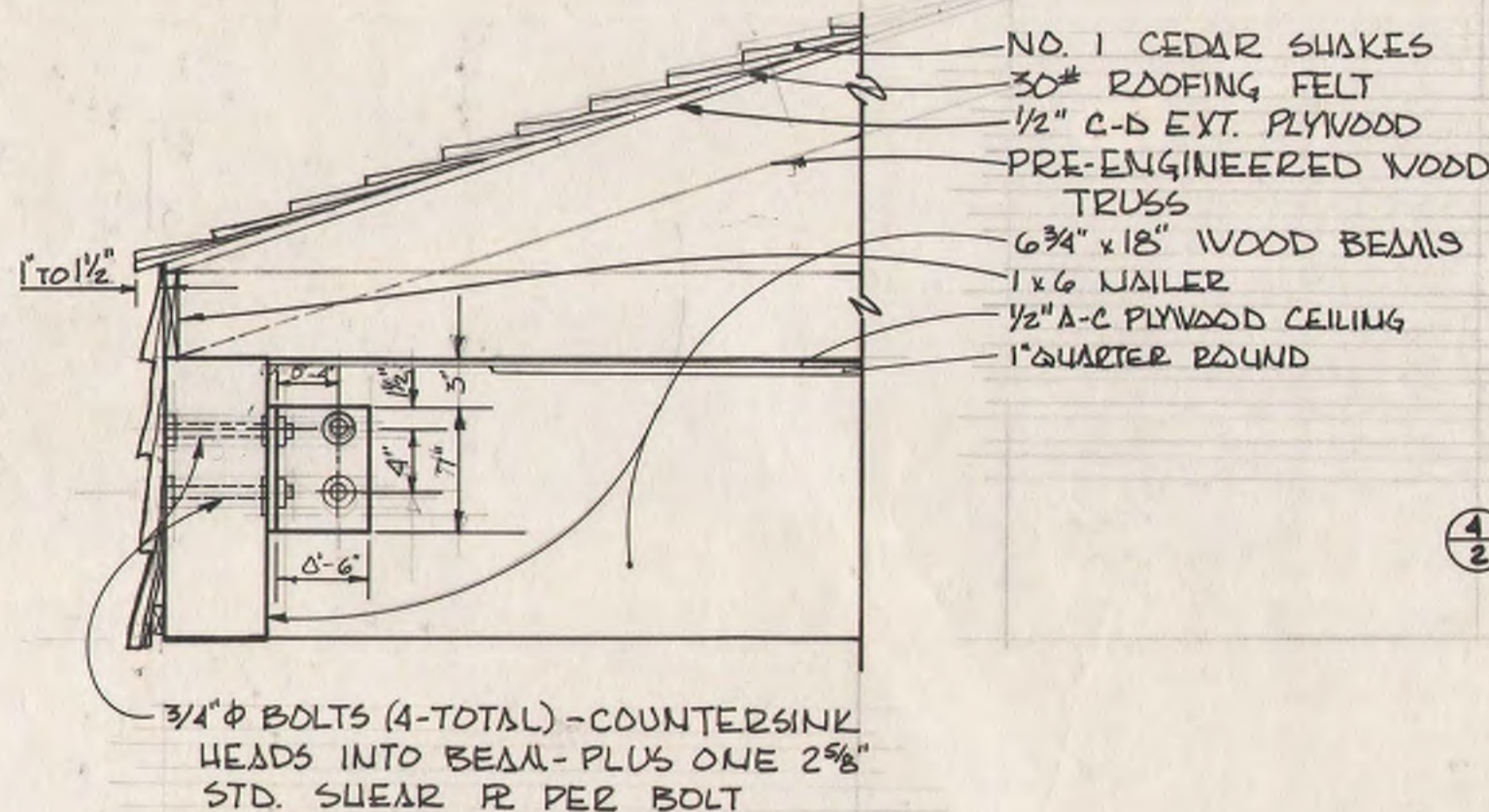
FTG. BEARING PRESSURE	2000# / SQ. FT.
LIVE LOAD	30# / " "
WIND LOAD	25# / " "
UPLIFT	18# / " "



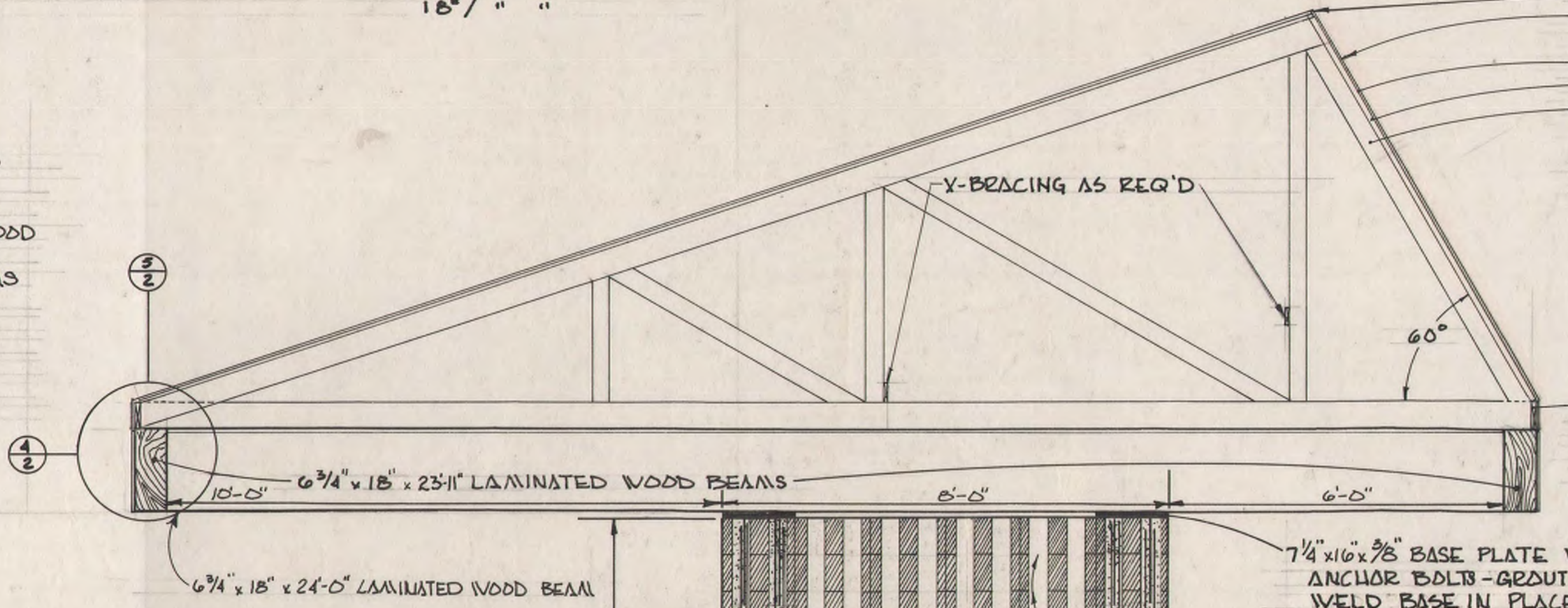
6 SECTION  
 2 SCALE 1/2" = 1'-0"



7 SECTION  
 2 SCALE 1 1/2" = 1'-0"

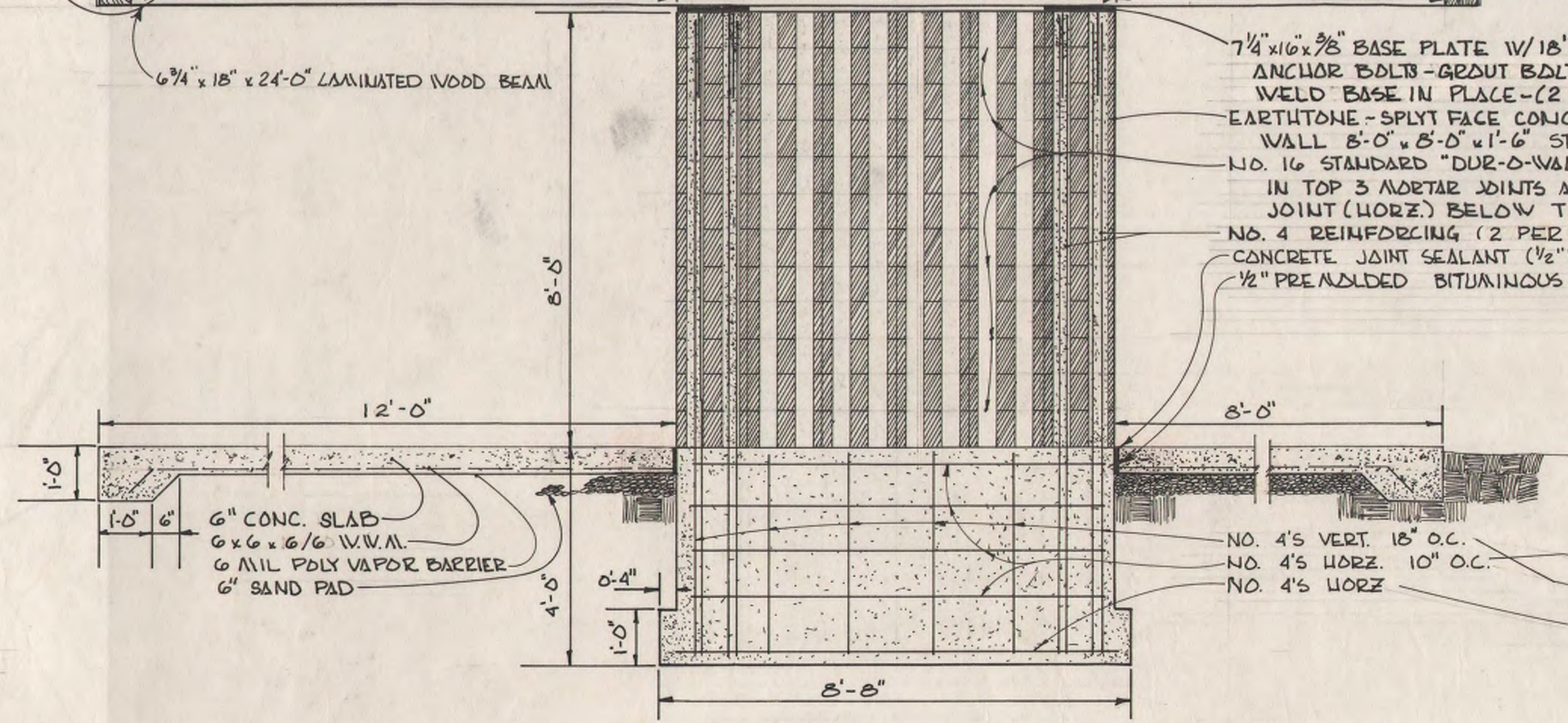


4 DETAIL - ELEVATION - BEAM CONNECTION  
 2 SCALE 1" = 1'-0"

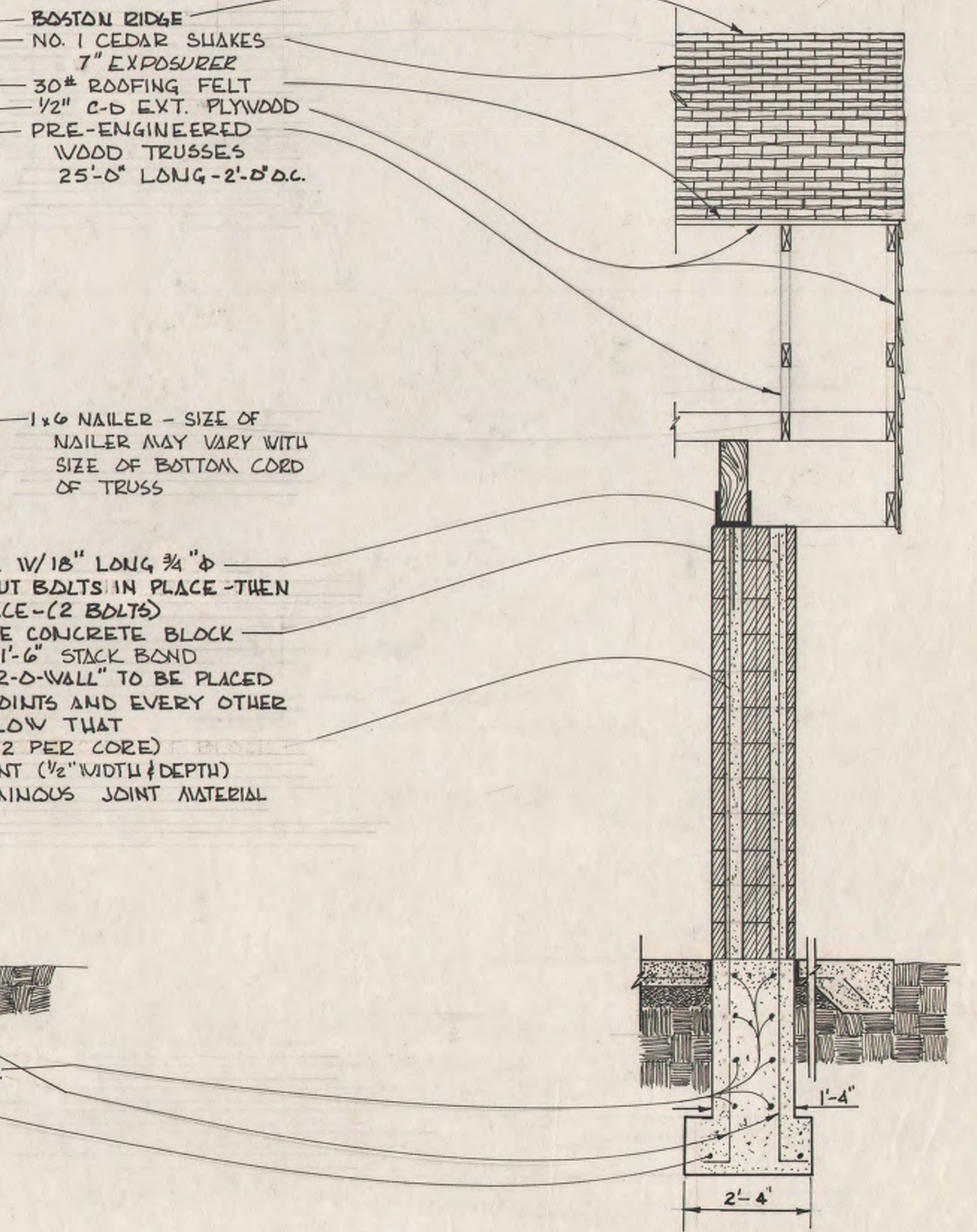


1 TYPICAL TRUSS  
 2 SCALE 1/4" = 1'-0"

ACTUAL SIZE OF TRUSS MEMBERS TO BE DETERMINED  
 BY MANUFACTURER AND CONFIRMED BY SHOP  
 DRAWINGS AND CALCULATIONS BEARING THE STAMP  
 OF AN ENGINEER REGISTERED IN THE STATE OF IOWA  
 SHOP DRAWINGS SHOULD ALSO INCLUDE THE CONNECTION  
 BETWEEN THE TRUSS AND THE LAMINATED WOOD BEAMS



2 SECTION -  
 2 SCALE 1/2" = 1'-0"

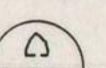
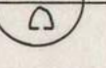


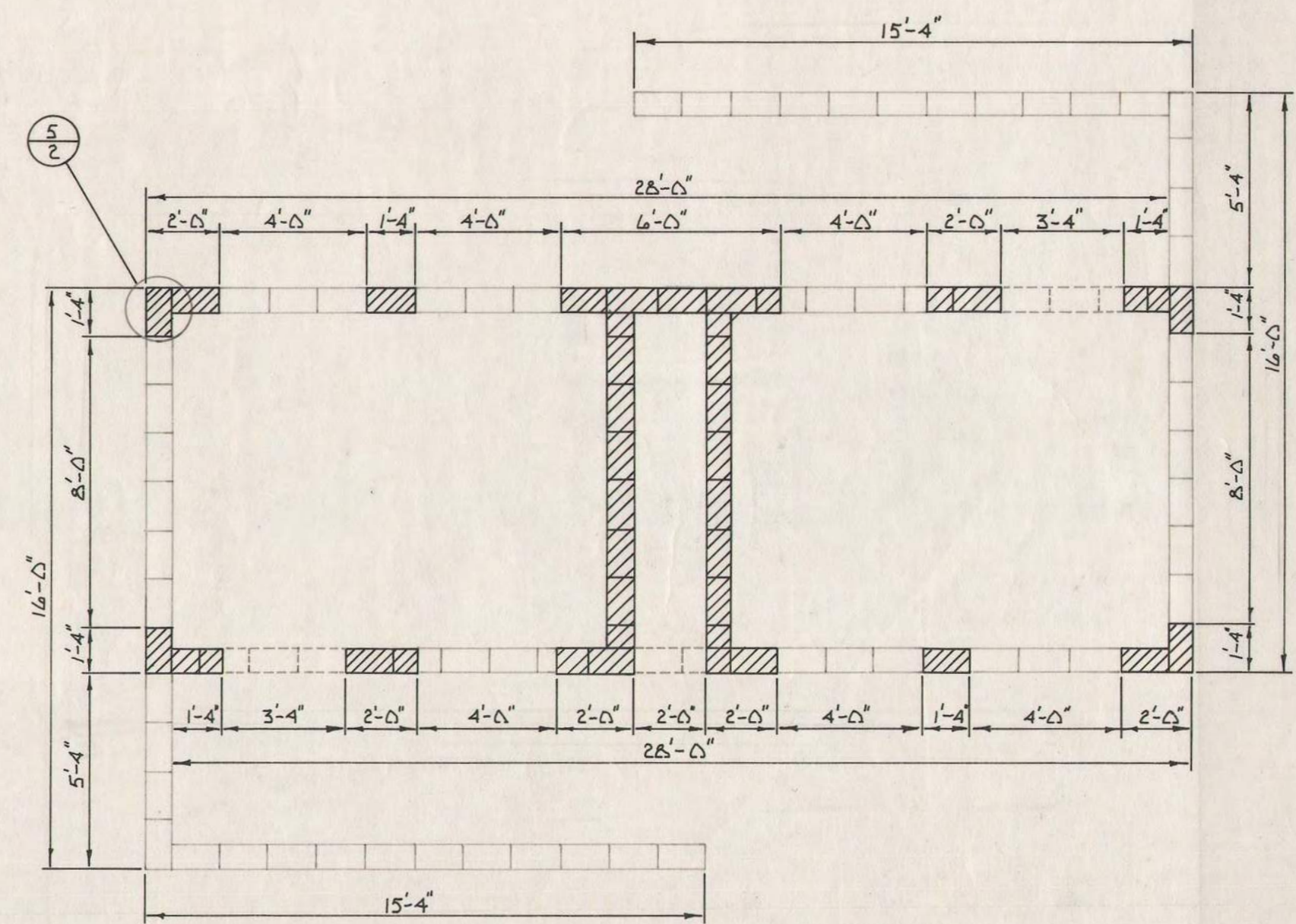
3 SECTION  
 2 SCALE: 1/2" = 1'-0"

**DESIGN CRITERIA**

FOOTING BEARING PRESSURE	= 2000 LBS. / SQ. FT.
LIVE LOAD	= 30 LBS. / SQ. FT.
WIND LOADS	= 25 LBS. / SQ. FT.
UPLIFT	= 10 LBS. / SQ. FT.

**LEGEND**

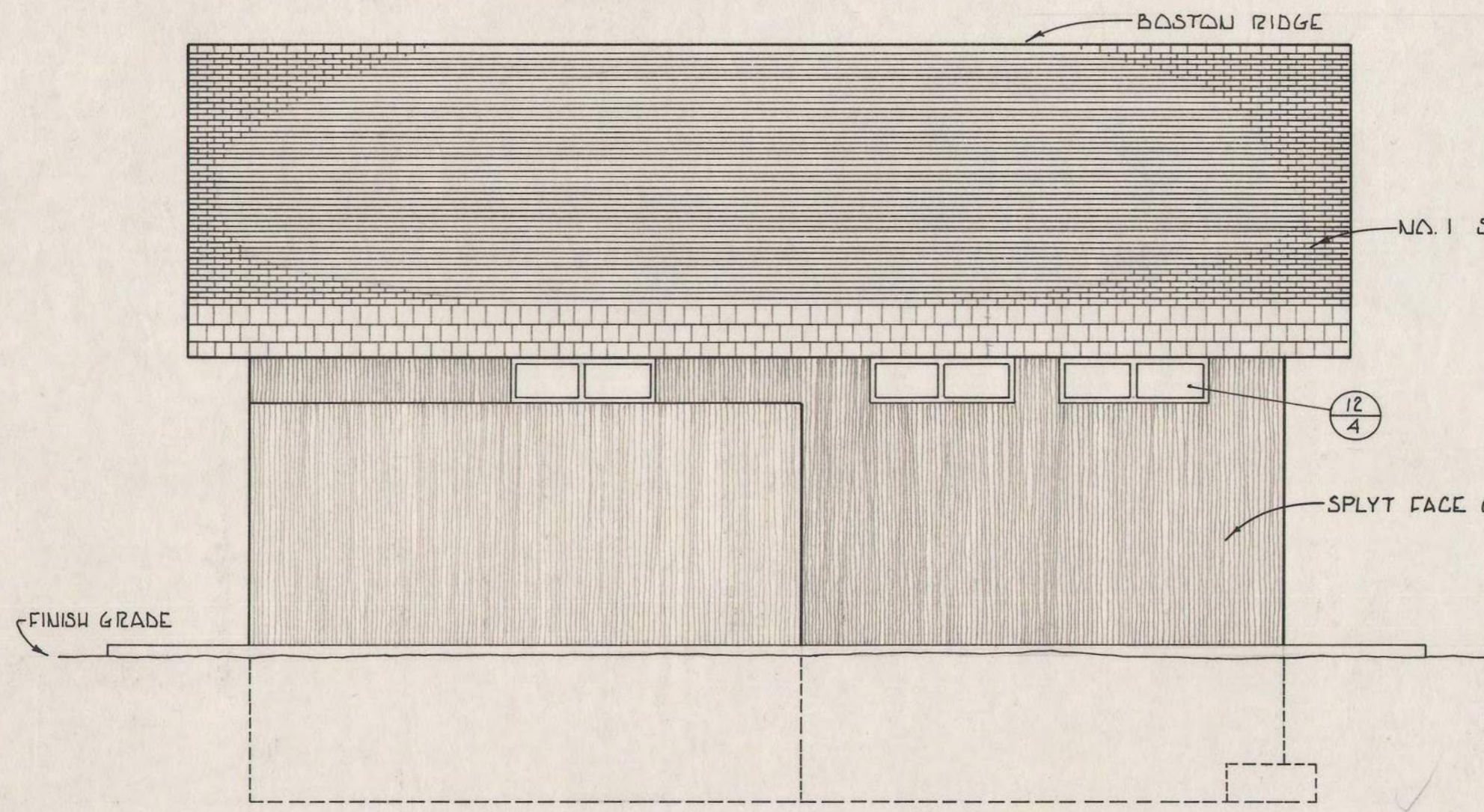
	DRAWING NUMBER
	SHEET NUMBER



**4 BLOCK COURSING**  
SCALE: 1/4"=1'-0"

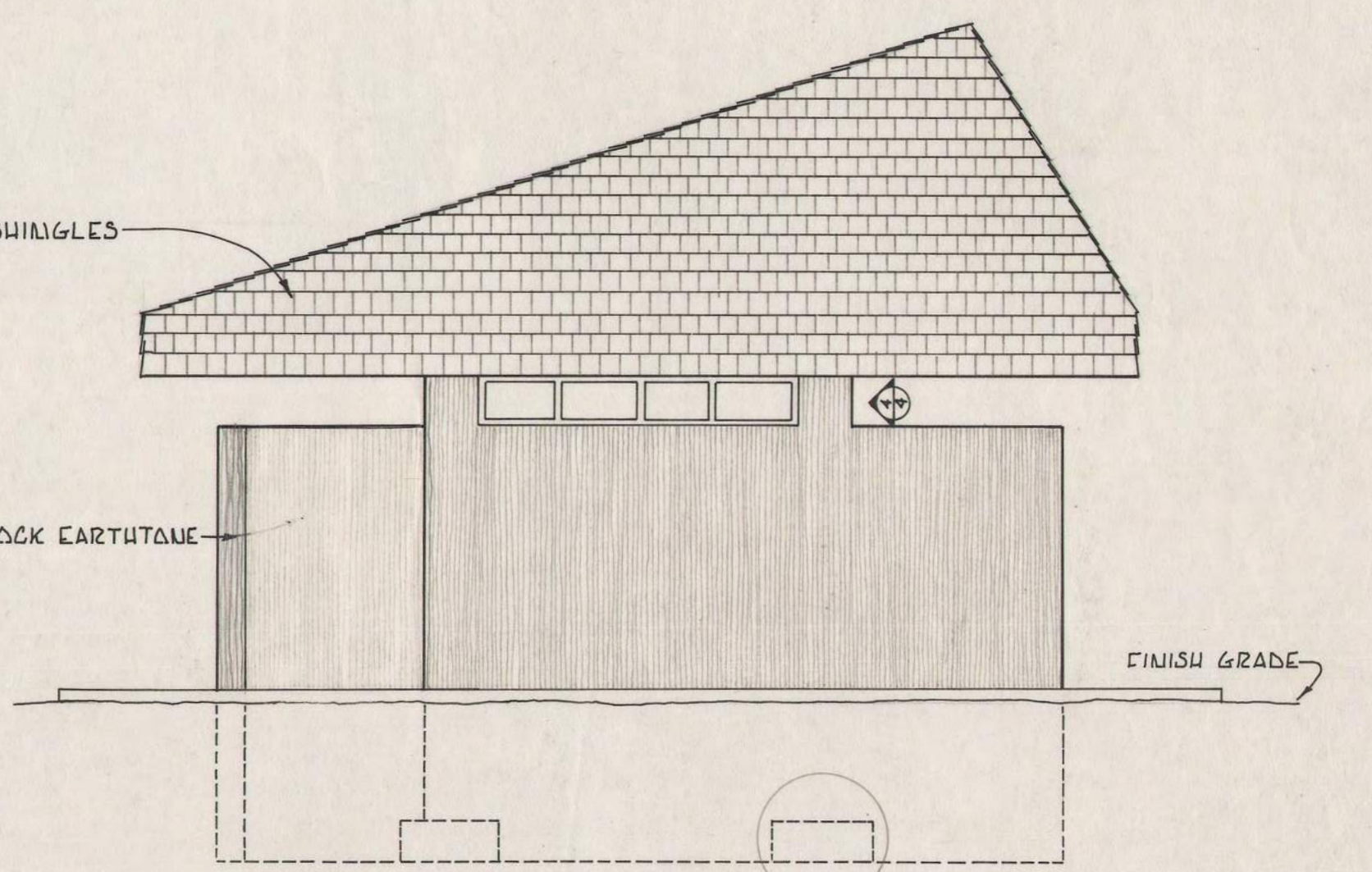
NOTE: WATER CLOSET FOR HANDICAPPED STALL TO BE A HIGHLINE K351A EB

NOTE: PLACE 1/2" PREFORMED BITUMINOUS JOINT MATERIAL AND CONCRETE JOINT SEALANT (1/2" DEPTH & WIDTH) ALONG ALL WALLS AND IN SLABS AS SHOWN

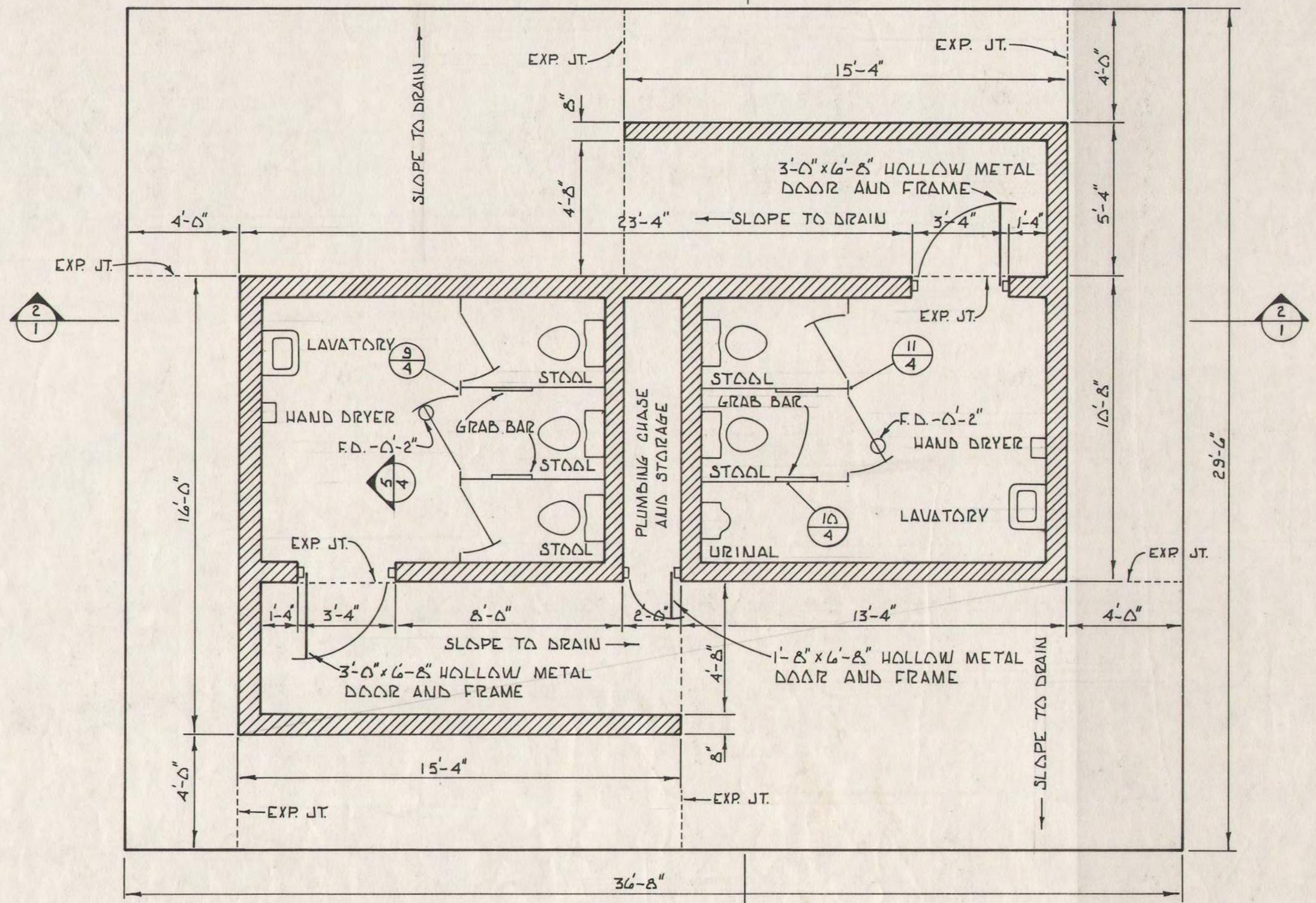


**5 FRONT ELEVATION**  
SCALE: 1/4"=1'-0"

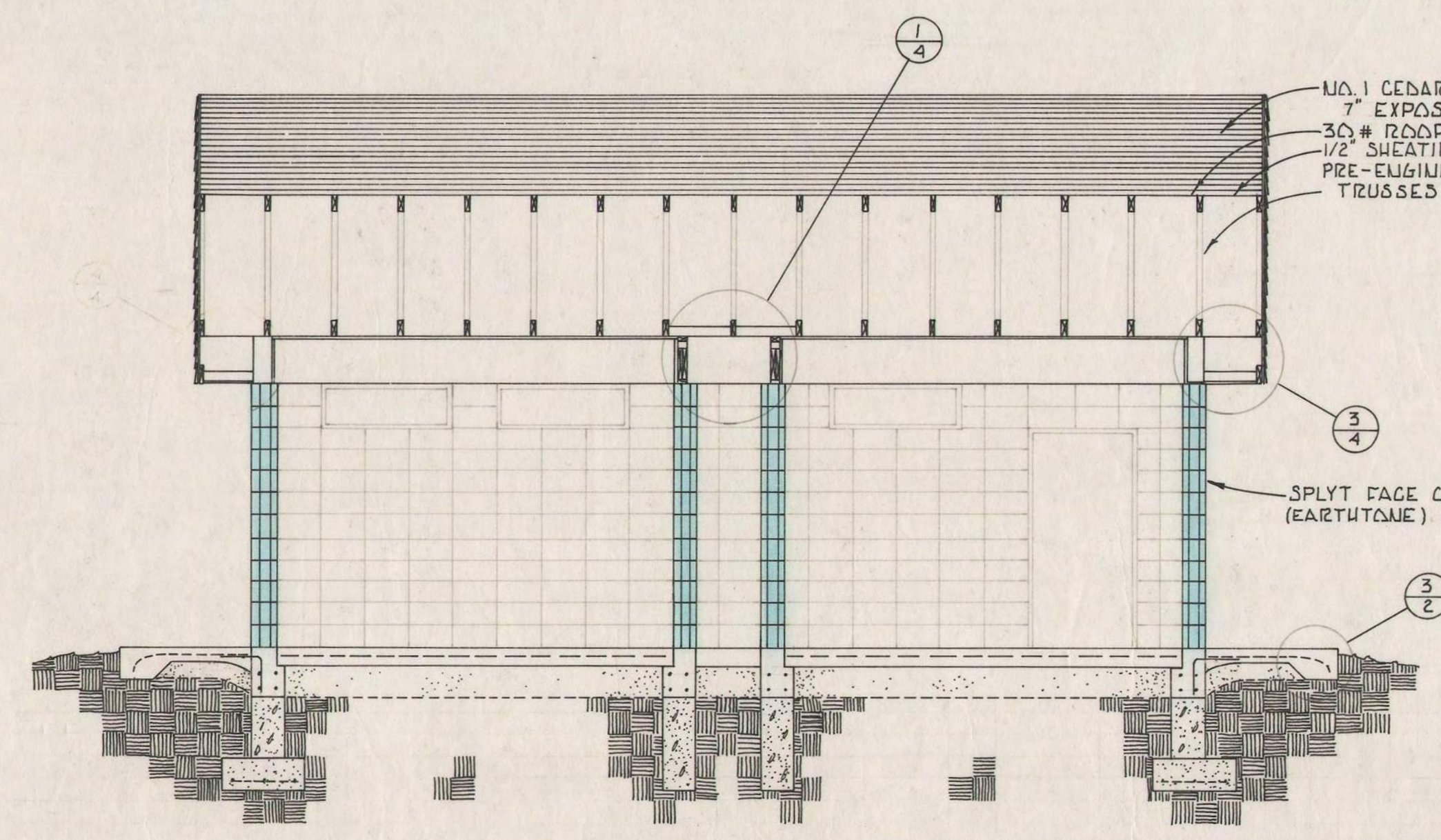
NOTE: MORTAR IS TO BE WIPED FLUSH WITH FACE OF BLOCK. THE MASON SHALL FOLLOW THE CONTOURS OF THE RISERS OF THE BLOCK TO GIVE THE APPEARANCE OF A CONTINUOUS VERTICAL RIDGE.



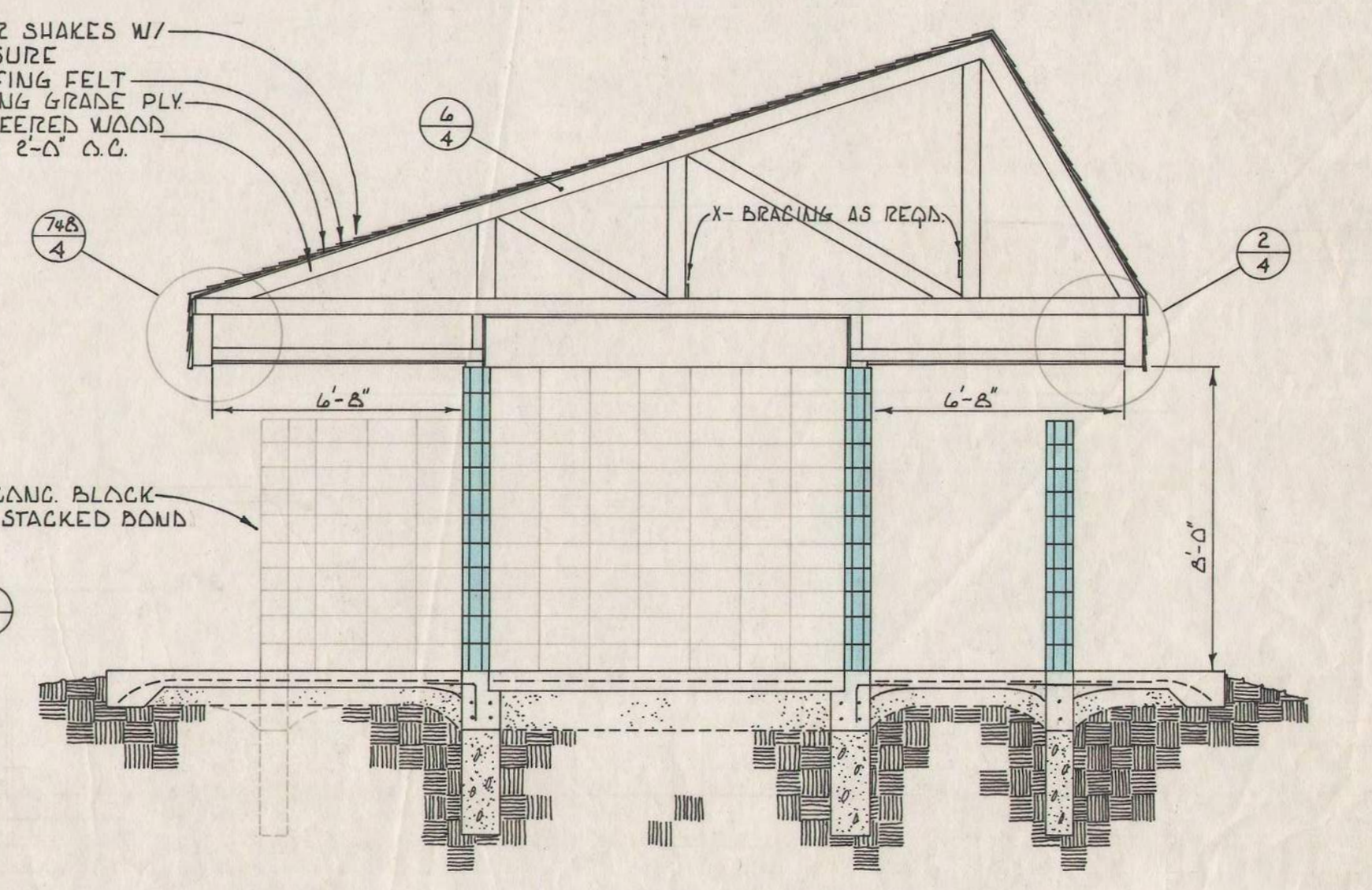
**6 SIDE ELEVATION**  
SCALE: 1/4"=1'-0"



**1 FLOOR PLAN**  
SCALE: 1/4"=1'-0"

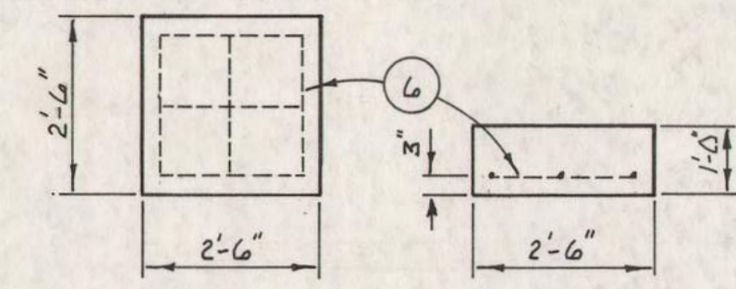


**2 BUILDING SECTION**  
SCALE: 1/4"=1'-0"

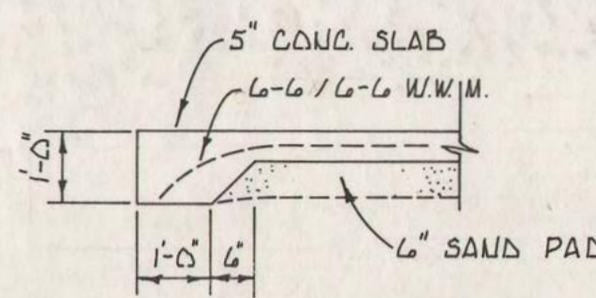


**3 BUILDING SECTION**  
SCALE: 1/4"=1'-0"

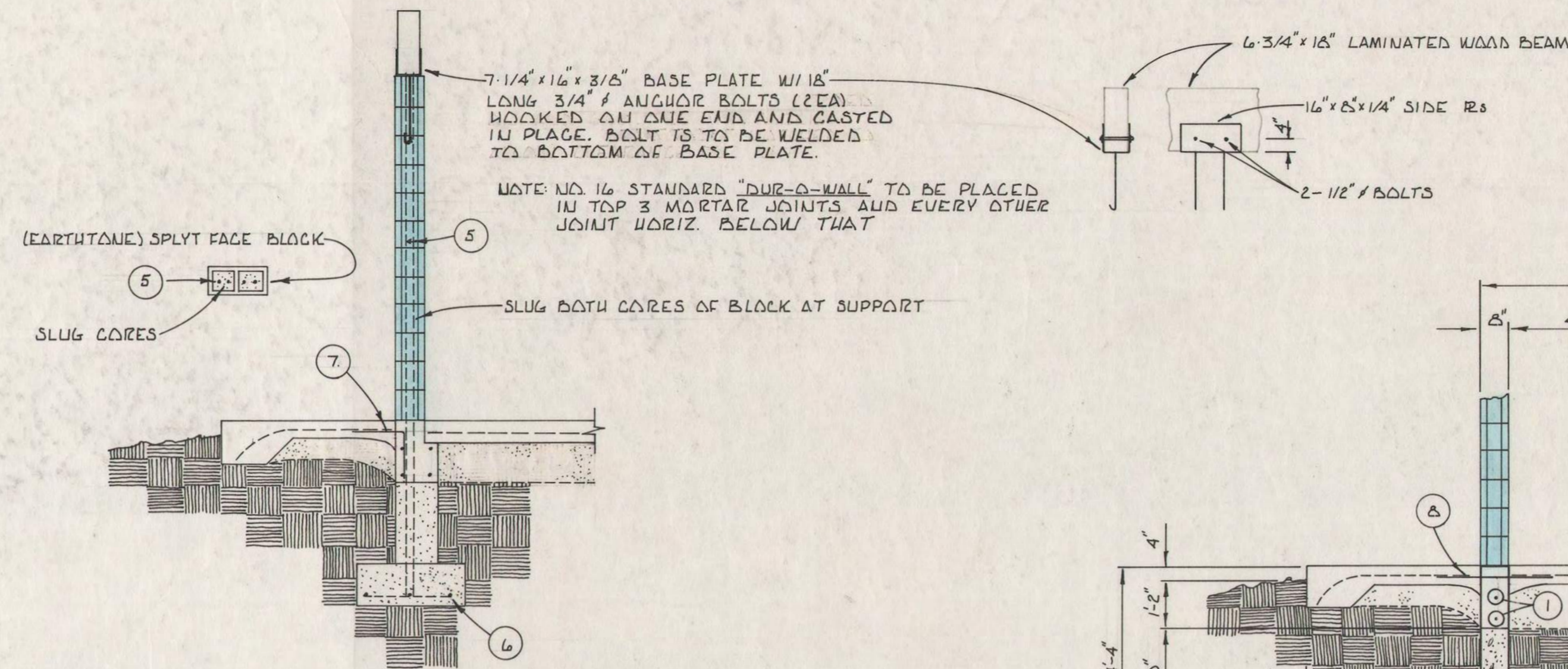
STEEL SCHEDULE				
MARK	SIZE	SHAPE	LENGTH	QUANTITY
1	4		25'-2"	8
2	4		10'-2"	16
3	4		7'-4"	4
4	4		14'-10"	4
5	4		12'-1"	16
6	4		2'-0"	24
7	4		2'-3"	42
8	4		2'-5"	20



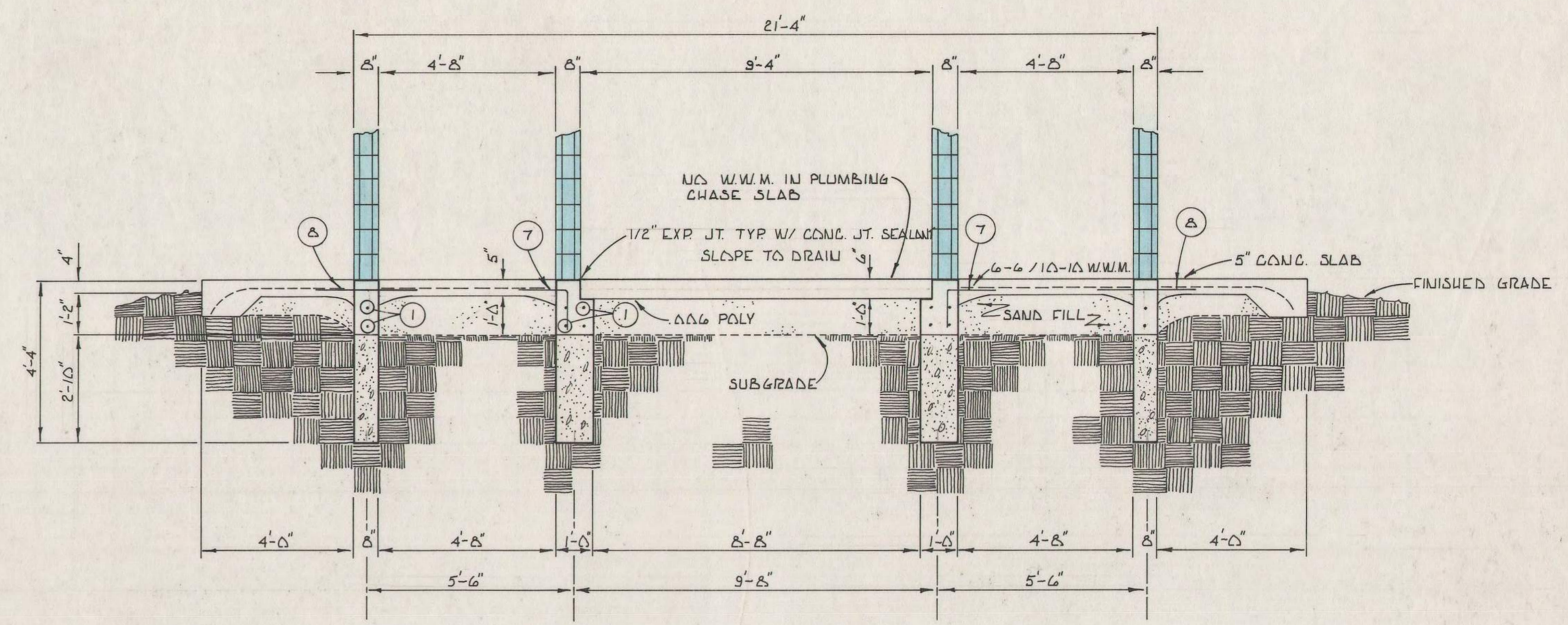
4 DETAIL - CORNER FOOTINGS  
SCALE: 3/8" = 1'-0"



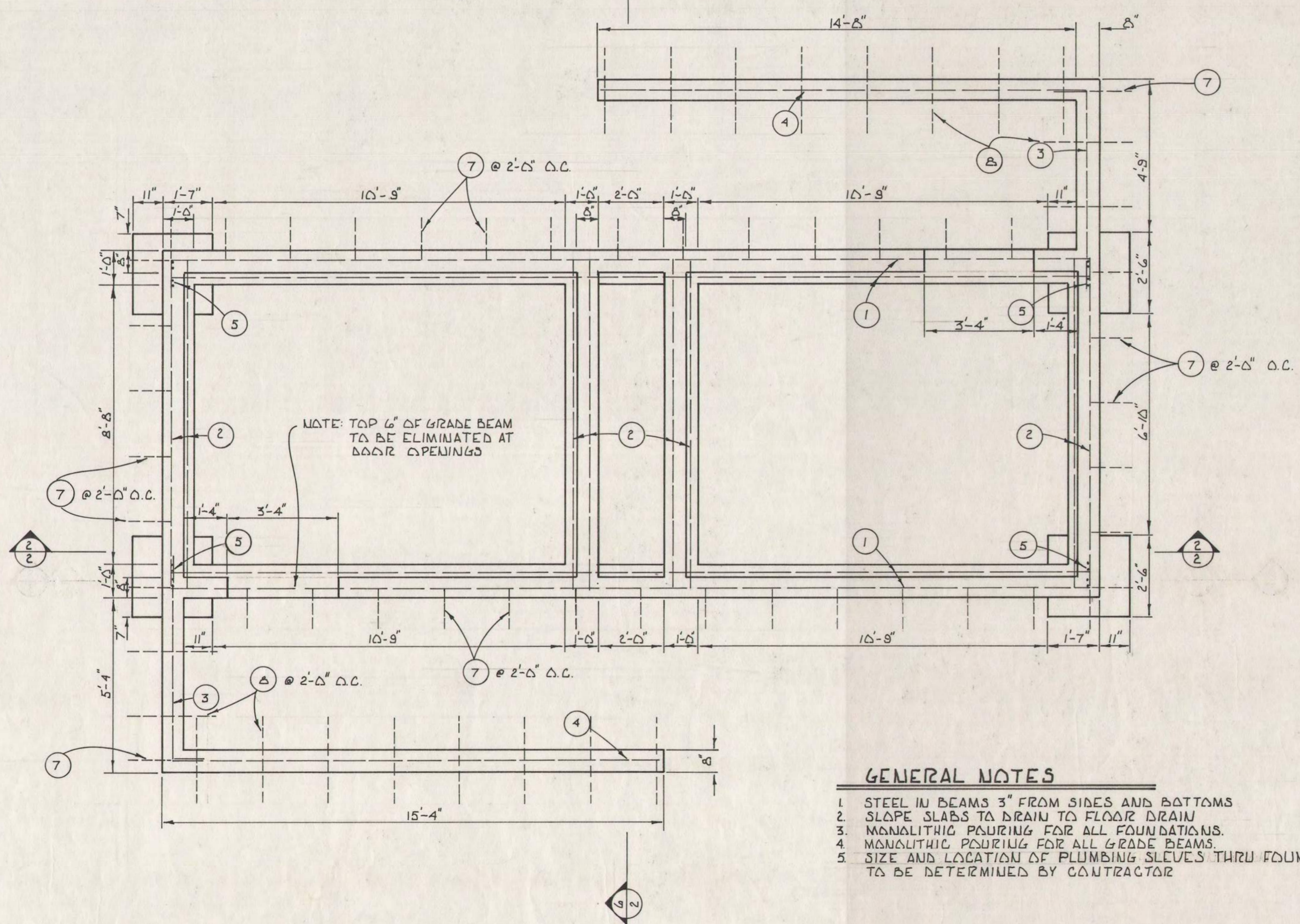
3 DETAIL - SLAB EDGE  
SCALE: 3/8" = 1'-0"



5 DETAIL - CORNER SUPPORT  
SCALE: 3/8" = 1'-0"

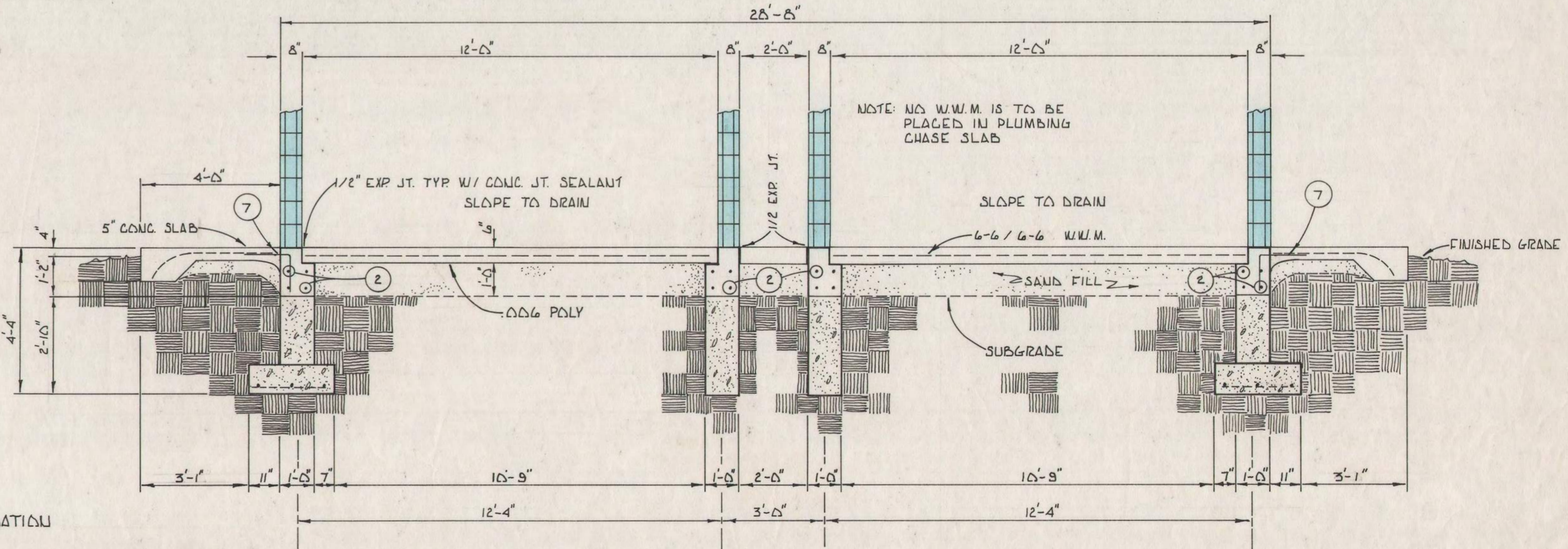


6 SECTION - FOOTINGS & BEAMS  
SCALE: 3/8" = 1'-0"



1 STRUCTURAL FLOOR PLAN  
SCALE: 3/8" = 1'-0"

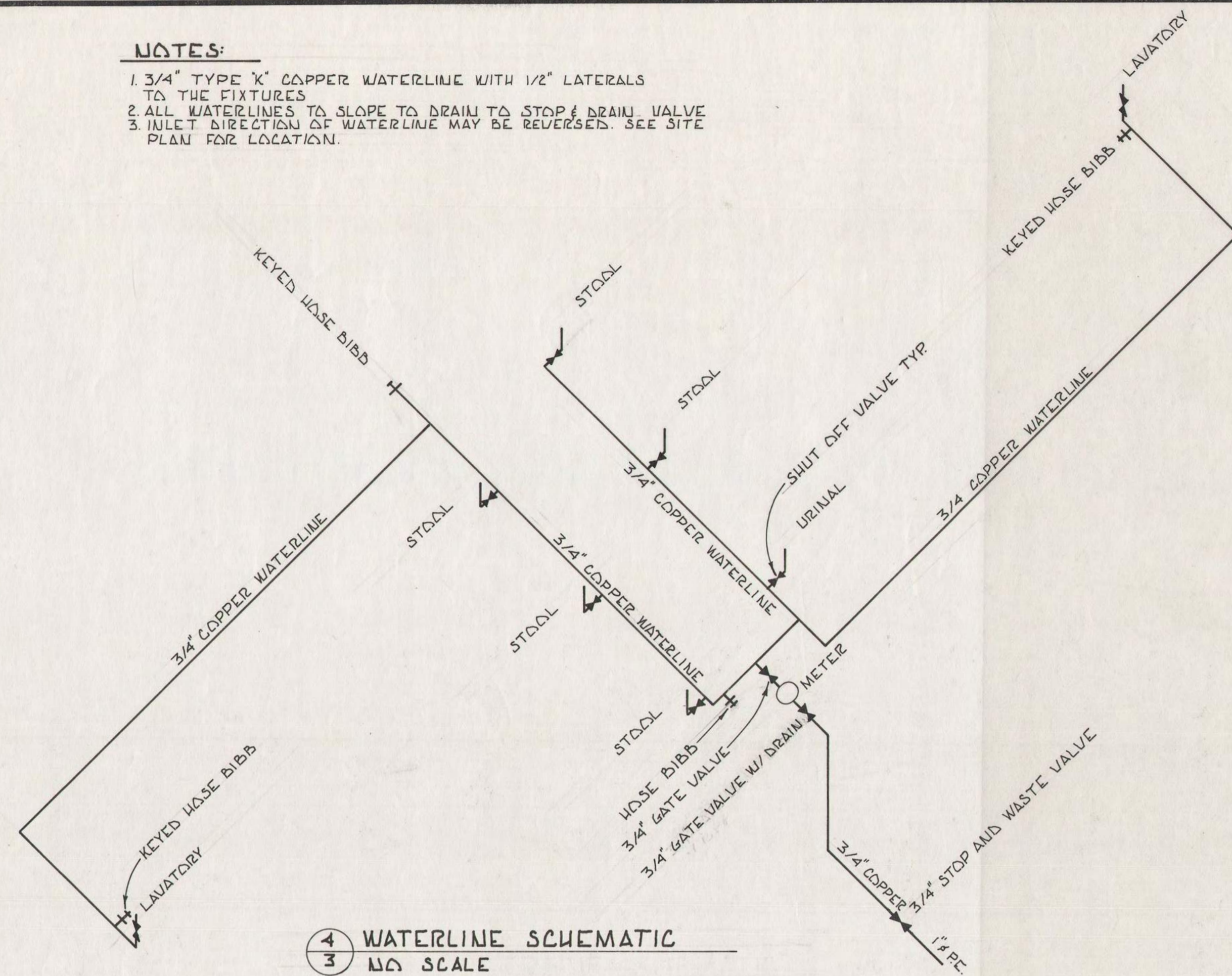
- GENERAL NOTES**
1. STEEL IN BEAMS 3" FROM SIDES AND BOTTOMS
  2. SLOPE SLABS TO DRAIN TO FLOOR DRAIN
  3. MONOLITHIC POURING FOR ALL FOUNDATIONS.
  4. MONOLITHIC POURING FOR ALL GRADE BEAMS.
  5. SIZE AND LOCATION OF PLUMBING SLEEVES THRU FOUNDATION TO BE DETERMINED BY CONTRACTOR



2 SECTION - FOOTINGS & BEAMS  
SCALE: 3/8" = 1'-0"

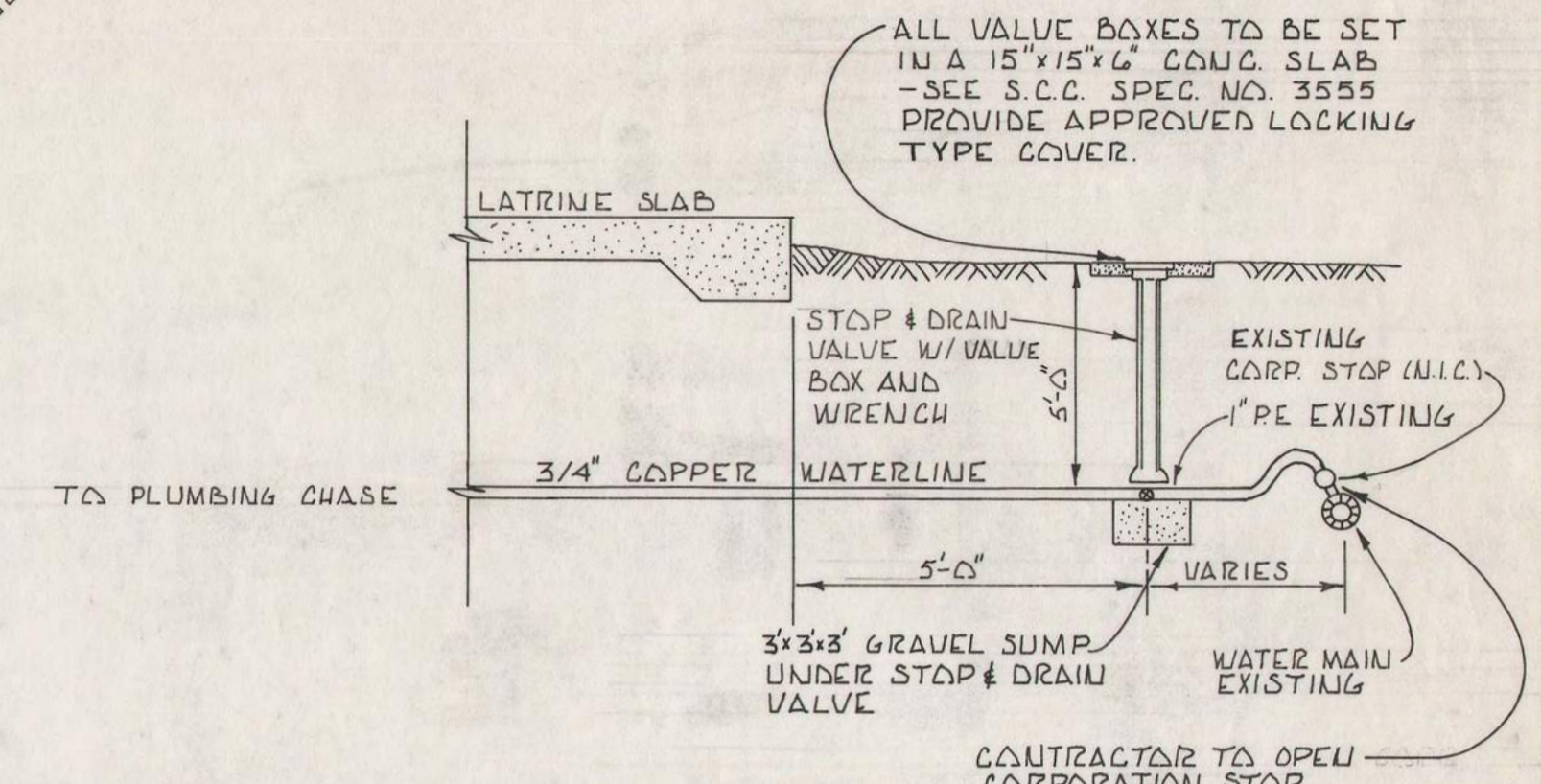
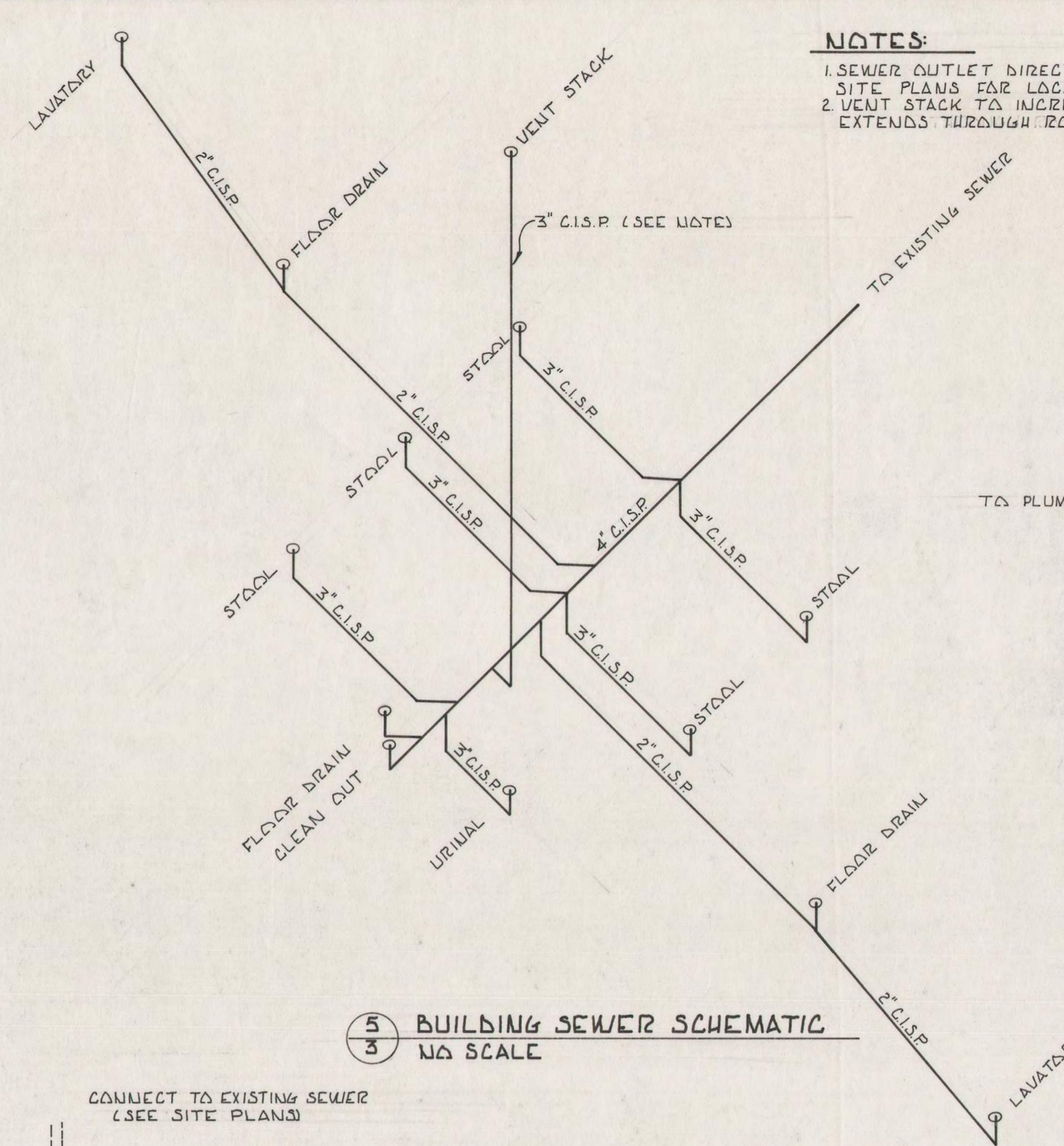
**NOTES:**

1. 3/4" TYPE 'K' COPPER WATERLINE WITH 1/2" LATERALS TO THE FIXTURES
2. ALL WATERLINES TO SLOPE TO DRAIN TO STOP & DRAIN VALVE
3. INLET DIRECTION OF WATERLINE MAY BE REVERSED. SEE SITE PLAN FOR LOCATION.



**NOTES:**

1. SEWER OUTLET DIRECTION MAYBE REVERSED. SEE SITE PLANS FOR LOCATION.
2. VENT STACK TO INCREASE TO 4" C.I.S.P. WHERE IT EXTENDS THROUGH ROOF.



**LIGHTING SCHEDULE**

DESIGNATION	MANUFACTURER	DESCRIPTION
1	KENALL 3663	CEILING MOUNT FIXTURE
2	KENALL 3663	CEILING MOUNT FIXTURE
3	KENALL 3608	WALL MOUNT FIXTURE

