

# IOWA DEPARTMENT OF ADMINISTRATIVE SERVICES

## CONSTRUCTION PLANS FOR

# DPS POST 13 - UPPER PARKING LOT REPLACEMENT

### DAS PROJECT #9511.00

MOUNT PLEASANT, IA  
MAY, 2026

#### GOVERNING SPECIFICATIONS

THE 2026 EDITION OF THE "IOWA STATEWIDE URBAN SPECIFICATIONS FOR PUBLIC IMPROVEMENTS".

MUTCD 2009 AS ADOPTED BY IOWA DEPARTMENT OF TRANSPORTATION.

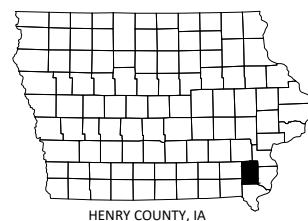
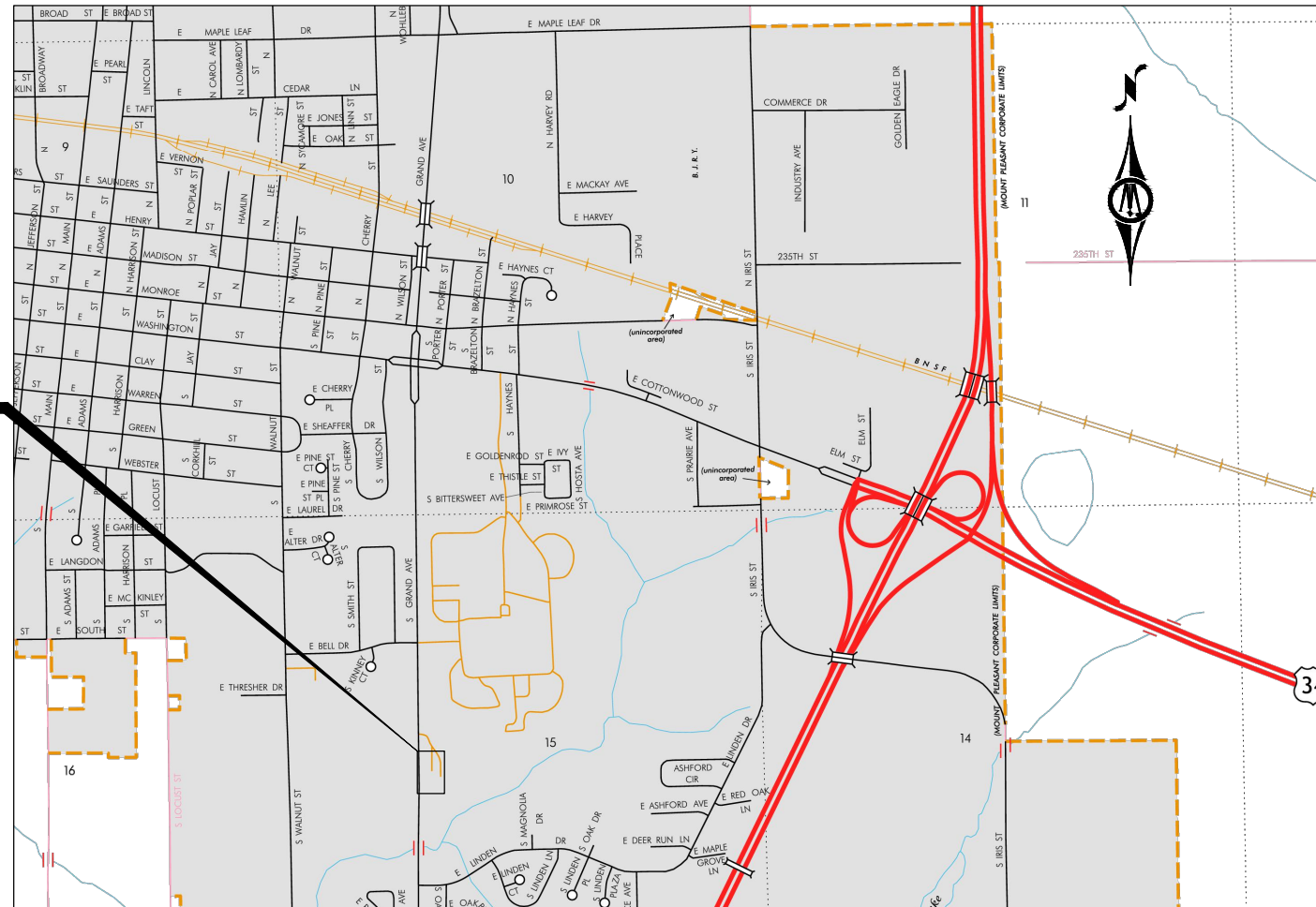
ALL APPLICABLE FEDERAL, STATE, AND LOCAL LAWS AND ORDINANCES WILL BE COMPLIED WITHIN THE CONSTRUCTION OF THIS PROJECT.



NOTE: EXISTING UTILITY INFORMATION SHOWN ON THIS PLAN HAS BEEN PROVIDED BY THE UTILITY OWNER. THE CONTRACTOR SHALL FIELD VERIFY EXACT LOCATIONS PRIOR TO COMMENCING CONSTRUCTION AS REQUIRED BY STATE LAW. NOTIFY IOWA ONE CALL 1-800-292-8989 OR 811

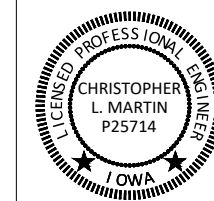
THE SUBSURFACE UTILITY INFORMATION IN THIS PLAN IS UTILITY QUALITY LEVEL D UNLESS OTHERWISE NOTED. THIS UTILITY LEVEL WAS DETERMINED ACCORDING TO THE GUIDELINES OF CI/ASCE 38-02, ENTITLED "STANDARD GUIDELINES FOR THE COLLECTION AND DEPICTION OF EXISTING SUBSURFACE UTILITY DATA."

**PROJECT LOCATION**  
1300 S. GRAND AVE.  
MT PLEASANT, IOWA 52641



MAP OF THE CITY OF MOUNT PLEASANT  
HENRY COUNTY, IA

INDEX OF SHEETS			
SHEET NUMBER	SHEET TITLE	REVISION	ISSUE DATE
A.01	TITLE SHEET	0	04/27/2026
A.02	LEGEND	0	04/27/2026
B.01	TYPICAL SECTIONS	0	04/27/2026
B.02	TYPICAL DETAILS	0	04/27/2026
C.01	ESTIMATED PROJECT QUANTITIES	0	04/27/2026
C.02	ESTIMATE REFERENCE NOTES	0	04/27/2026
D.01	PARKING LOT LAYOUT	0	04/27/2026
D.02	PLAN & PROFILE - ENTRANCE DRIVE	0	04/27/2026
F.01	REMOVALS	0	04/27/2026
G.01	CONTROL POINTS & ALIGNMENT DATA	0	04/27/2026
J.01	STAGING	0	04/27/2026
L.01	JOINTING LAYOUT	0	04/27/2026
R.01	GRADING & EROSION CONTROL	0	04/27/2026
S.01	STOOP REPLACEMENT AND STOREFRONT MODIFICATIONS	0	04/27/2026

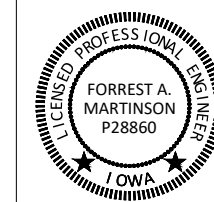


I HEREBY CERTIFY THAT THIS ENGINEERING DOCUMENT WAS PREPARED BY ME OR UNDER MY DIRECT PERSONAL SUPERVISION AND THAT I AM A DULY LICENSED PROFESSIONAL ENGINEER UNDER THE LAWS OF THE STATE OF IOWA.

*Christopher L. Martin*  
CHRISTOPHER L. MARTIN  
LIC. NO. P25714 DATE: 04/20/2026

MY LICENSE RENEWAL DATE IS 12/31/2026

PAGES OR SHEETS COVERED BY THIS SEAL:  
SHEET S.01



I HEREBY CERTIFY THAT THIS ENGINEERING DOCUMENT WAS PREPARED BY ME OR UNDER MY DIRECT PERSONAL SUPERVISION AND THAT I AM A DULY LICENSED PROFESSIONAL ENGINEER UNDER THE LAWS OF THE STATE OF IOWA.

*Forrest A. Martinson*  
FORREST A. MARTINSON  
LIC. NO. P28860 DATE: 04/20/2026

MY LICENSE RENEWAL DATE IS 12/31/2027

PAGES OR SHEETS COVERED BY THIS SEAL:  
SHEETS A.01 - R.01

THIS SHEET SET IS INTENDED TO BE PLOTTED IN COLOR

© Bolton & Menk, Inc. 2026. All Rights Reserved. 14:00:00 AM 04/27/2026 10:16:50 AM



430 E GRAND AVENUE, SUITE 101  
DES MOINES, IA 50309  
Phone: (515) 259-9190  
Email: DesMoines@bolton-menk.com  
www.bolton-menk.com

DESIGNED	REV	DESCRIPTION	DATE
FAM	0	ISSUED FOR BID	04/27/2026
TJN			
FAM			
CLIENT PROJ. NO.	9511.000		

IOWA DEPARTMENT OF ADMINISTRATIVE SERVICES  
DPS POST 13 - UPPER PARKING LOT REPLACEMENT

TITLE SHEET

SHEET  
A.01

THIS SHEET SET IS INTENDED TO BE PLOTTED IN COLOR

### EXISTING TOPOGRAPHIC SYMBOLS

	ACCESS GRATE		REGULATION STATION GAS
	AIR CONDITION UNIT		SATELLITE DISH
	ANTENNA		SIGN TRAFFIC
	AUTO SPRINKLER CONNECTION		SIGNAL CONTROL CABINET
	BARRICADE PERMANENT		SOIL BORING
	BASKETBALL POST		SIREN
	BENCH		TELEPHONE BOOTH
	BIRD FEEDER		TILE INLET
	BOLLARD		TILE OUTLET
	BUSH		TILE RISER
	CATCH BASIN RECTANGULAR CASTING		TRANSFORMER-ELECTRIC
	CATCH BASIN CIRCULAR CASTING		TREE-CONIFEROUS
	CURB STOP		TREE-DEAD
	CLEAN OUT		TREE-DECIDUOUS
	CULVERT END		TREE STUMP
	DRINKING FOUNTAIN		TRAFFIC ARM BARRIER
	DOWN SPOUT		TRAFFIC SIGNAL
	ELECTRIC CAR CHARGE STATION		TRASH CAN
	FILL PIPE		UTILITY MARKER
	FIRE HYDRANT		VALVE
	FLAG POLE		VALVE POST INDICATOR
	FLARED END / APRON		VALVE VAULT
	FUEL PUMP		VAULT
	GRILL		VENT PIPE
	GUY WIRE ANCHOR		WATER SPIGOT
	HANDHOLE		WELL
	HANDICAP SPACE		WETLAND DELINEATED MARKER
	IRRIGATION SPRINKLER HEAD		WETLAND
	IRRIGATION VALVE BOX		WET WELL
	LIFT STATION CONTROL PANEL		YARD HYDRANT
	LIFT STATION		
	LIGHT POLE		
	MAILBOX		
	MANHOLE-COMMUNICATION		
	MANHOLE-ELECTRIC		
	MANHOLE-GAS		
	MANHOLE-HEAT		
	MANHOLE-RECLAIMED WATER		
	MANHOLE-SANITARY SEWER		
	MANHOLE-STORM SEWER		
	MANHOLE-UTILITY		
	MANHOLE-WATER		
	METER		
	DRIVE-THRU MICROPHONE		
	PARKING METER		
	PAVEMENT MARKING		
	PEDESTAL-COMMUNICATION		
	PEDESTAL-ELECTRIC		
	PEDESTRIAN PUSH BUTTON		
	PICNIC TABLE		
	POLE-UTILITY		
	POST		
	RAILROAD SIGNAL POLE		

### PROPOSED TOPOGRAPHIC SYMBOLS

	CLEANOUT
	MANHOLE
	LIFT STATION
	STORM SEWER CIRCULAR CASTING
	STORM SEWER RECTANGULAR CASTING
	STORM SEWER FLARED END / APRON
	STORM SEWER OUTLET STRUCTURE
	STORM SEWER OVERFLOW STRUCTURE
	CURB BOX
	FIRE HYDRANT
	WATER VALVE
	WATER REDUCER
	WATER BEND
	WATER TEE
	WATER CROSS
	WATER SLEEVE
	WATER CAP / PLUG
	RIP RAP
	DRAINAGE FLOW
	TRAFFIC SIGNS
	LIGHT POLE

### SURVEY SYMBOLS

	BENCHMARK LOCATION		CAST IRON MONUMENT
	CONTROL POINT		STONE MONUMENT
	MONUMENT FOUND		

### EXISTING TOPOGRAPHIC LINES

	RETAINING WALL
	FENCE
	FENCE-DECORATIVE
	GUARD RAIL
	TREE LINE
	BUSH LINE

### SURVEY LINES

	CONTROLLED ACCESS
	BOUNDARY
	CENTERLINE
	EXISTING EASEMENT LINE
	PROPOSED EASEMENT LINE
	EXISTING LOT LINE
	PROPOSED LOT LINE
	EXISTING RIGHT-OF-WAY
	PROPOSED RIGHT-OF-WAY
	SETBACK LINE
	SECTION LINE
	QUARTER LINE
	SIXTEENTH LINE
	TEMPORARY EASEMENT

### EXISTING UTILITY LINES

	FORCEMAIN
	SANITARY SEWER
	SANITARY SERVICE
	STORM SEWER
	STORM SEWER DRAIN TILE
	WATERMAIN
	WATER SERVICE
	RECLAIMED WATER

### PROPOSED UTILITY LINES

	FORCEMAIN
	SANITARY SEWER
	SANITARY SERVICE
	STORM SEWER
	STORM SEWER DRAIN TILE
	WATERMAIN
	WATER SERVICE
	PIPE CASING
	TRENCHLESS PIPE (PLAN VIEW)
	TRENCHLESS PIPE (PROFILE VIEW)

### GRADING INFORMATION

	EXISTING CONTOUR MINOR
	EXISTING CONTOUR MAJOR
	PROPOSED CONTOUR MINOR
	PROPOSED CONTOUR MAJOR
	PROPOSED GRADING LIMITS / SLOPE LIMITS
	PROJECT LIMITS
	PROPOSED SPOT ELEVATION
	RISE:RUN (SLOPE)

### EXISTING PRIVATE UTILITY LINES

NOTE:  
EXISTING UTILITY INFORMATION SHOWN ON THIS PLAN HAS BEEN PROVIDED BY THE UTILITY OWNER. THE CONTRACTOR SHALL FIELD VERIFY EXACT LOCATIONS PRIOR TO COMMENCING CONSTRUCTION AS REQUIRED BY STATE LAW. NOTIFY IOWA ONE CALL - 1-800-292-8989

THE SUBSURFACE UTILITY INFORMATION IN THIS PLAN IS UTILITY QUALITY LEVEL D UNLESS OTHERWISE NOTED. THIS UTILITY LEVEL WAS DETERMINED ACCORDING TO THE GUIDELINES OF CI/ASCE 38-02, ENTITLED "STANDARD GUIDELINE FOR INVESTIGATING AND DOCUMENTING EXISTING UTILITIES".

	UNDERGROUND FIBER OPTIC
	UNDERGROUND ELECTRIC
	UNDERGROUND GAS
	UNDERGROUND COMMUNICATION
	OVERHEAD ELECTRIC
	OVERHEAD COMMUNICATION
	OVERHEAD UTILITY

UTILITIES IDENTIFIED WITH A QUALITY LEVEL OTHER THAN D:

LINE TYPES FOLLOW THE FORMAT: UTILITY TYPE - QUALITY LEVEL  
EXAMPLE: UNDERGROUND GAS, QUALITY LEVEL A  
UTILITY QUALITY LEVEL (A,B,C,D) DEFINITIONS CAN BE FOUND IN CI/ASCE 38-22.

UTILITY QUALITY LEVELS:

LEVEL D - INFORMATION COMES SOLELY FROM EXISTING UTILITY RECORDS.

LEVEL C - SURVEYING ABOVE GROUND UTILITY FACILITIES, SUCH AS MANHOLES, VALVE BOXES, ETC; AND CORRELATING THIS INFORMATION WITH EXISTING UTILITY RECORDS.

LEVEL B - THE USE OF SURFACE GEOPHYSICAL TECHNIQUES TO DETERMINE THE EXISTENCE AND HORIZONTAL POSITION OF UNDERGROUND UTILITIES.

LEVEL A - THE USE OF NONDESTRUCTIVE DIGGING EQUIPMENT AT HORIZONTAL AND VERTICAL POSITION OF UNDERGROUND UTILITIES, AS WELL AS THE TYPE, SIZE, CONDITION, MATERIAL, AND OTHER CHARACTERISTICS.

### ABBREVIATIONS

A	ALGEBRAIC DIFFERENCE	GV	GATE VALVE	SAN	SANITARY SEWER
ADJ	ADJUST	HDPE	HIGH DENSITY POLYETHYLENE	SCH	SCHEDULE
ALT	ALTERNATE	HH	HANDHOLE	SERV	SERVICE
B-B	BACK TO BACK	HMA	HOT MIX ASPHALT	SHLD	SHOULDER
BLDG	BUILDING	HP	HIGH POINT	STA	STATION
BMP	BEST MANAGEMENT PRACTICE	HWL	HIGH WATER LEVEL	STD	STANDARD
BR	BEGIN RADIUS	HYD	HYDRANT	STM	STORM SEWER
BV	BUTTERFLY VALVE	I	INVERT	TC	TOP OF CURB
CB	CATCH BASIN	K	CURVE COEFFICIENT	TE	TEMPORARY EASEMENT
C&G	CURB AND GUTTER	L	LENGTH	TEMP	TEMPORARY
CIP	CAST IRON PIPE	LO	LOWEST OPENING	TNH	TOP NUT HYDRANT
CIPP	CURED-IN-PLACE PIPE	LP	LOW POINT	TP	TOP OF PIPE
CL	CENTER LINE	LT	LEFT	TYP	TYPICAL
CL	CLASS	MH	MANHOLE	VCP	VITRIFIED CLAY PIPE
CMP	CORRUGATED METAL PIPE	MIN	MINIMUM	VERT	VERTICAL
C.O.	CHANGE ORDER	MR	MID RADIUS	VPC	VERTICAL POINT OF CURVE
COMM	COMMUNICATION	NIC	NOT IN CONTRACT	VPI	VERTICAL POINT OF INTERSECTION
CSP	CORRUGATED STEEL PIPE	NMC	NON-METALLIC CONDUIT	VPT	VERTICAL POINT OF TANGENT
CLVT	CULVERT	NTS	NOT TO SCALE	WM	WATERMAIN
DIA	DIAMETER	NWL	NORMAL WATER LEVEL	WS	WATER SERVICE
DIP	DUCTILE IRON PIPE	OHW	ORDINARY HIGH WATER LEVEL		
DWY	DRIVEWAY	PC	POINT OF CURVE		
E	EXTERNAL CURVE DISTANCE	PCC	PORTLAND CEMENT CONCRETE	AC	ACRES
ESMT	EASEMENT	PE	PERMANENT EASEMENT	CF	CUBIC FEET
ELEC	ELECTRIC	PED	PEDESTRIAN, PEDESTAL	CV	COMPACTED VOLUME
ELEV/EL	ELEVATION	PERF	PERFORATED PIPE	CY	CUBIC YARD
EOF	EMERGENCY OVERFLOW	PERM	PERMANENT	EA	EACH
ER	END RADIUS	PI	POINT OF INTERSECTION	EV	EXCAVATED VOLUME
EX	EXISTING	PL	PROPERTY LINE	LB	POUND
FES	FLARED END SECTION	PRC	POINT OF REVERSE CURVE	LF	LINEAR FEET
F-F	FACE TO FACE	PT	POINT OF TANGENT	LS	LUMP SUM
FF	FINISHED FLOOR	PVC	POLYVINYL CHLORIDE PIPE	LV	LOOSE VOLUME
F&I	FURNISH AND INSTALL	PVMT	PAVEMENT	SF	SQUARE FEET
FM	FORCEMAIN	R	RADIUS	SV	STOCKPILE VOLUME
FO	FIBER OPTIC	RCP	REINFORCED CONCRETE PIPE	SY	SQUARE YARD
F.O.	FIELD ORDER	RET	RETAINING		
GRAN	GRANULAR	R/W	RIGHT-OF-WAY		
GRAV	GRAVEL	RSC	RIGID STEEL CONDUIT		
GU	GUTTER	RT	RIGHT		

© Bolton & Menk, Inc. 2025. All Rights Reserved. I:\ADMIN\131\_141251428600\CAD\141816401.dwg 4/20/2025 10:15:51 AM



430 E GRAND AVENUE, SUITE 101  
DES MOINES, IA 50309  
Phone: (515) 259-9190  
Email: DesMoines@bolton-menk.com  
www.bolton-menk.com

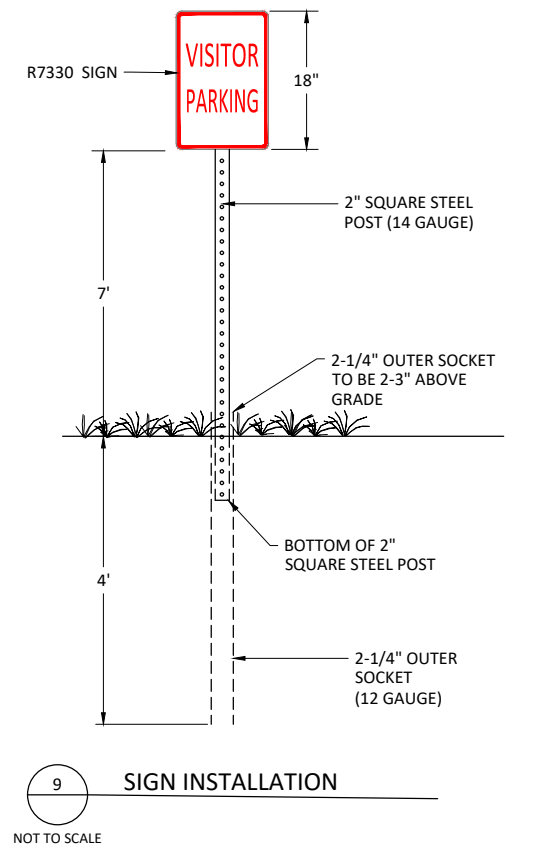
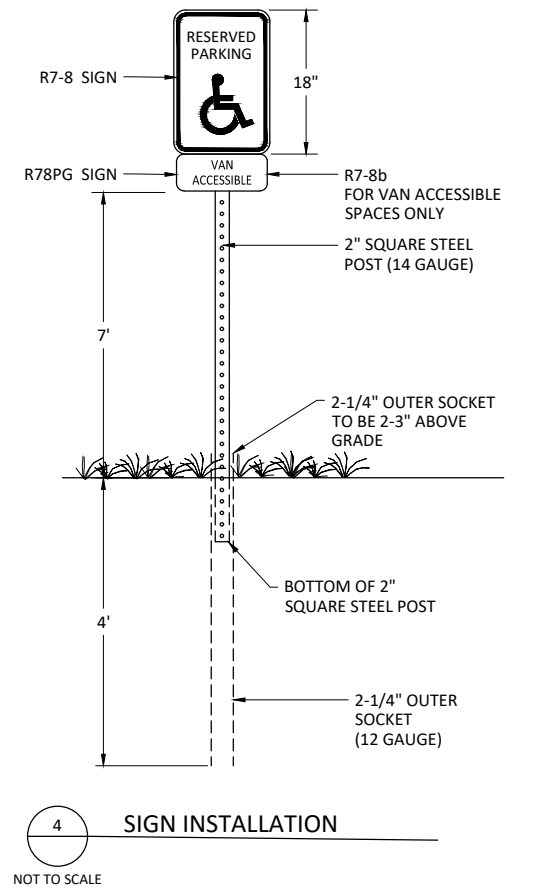
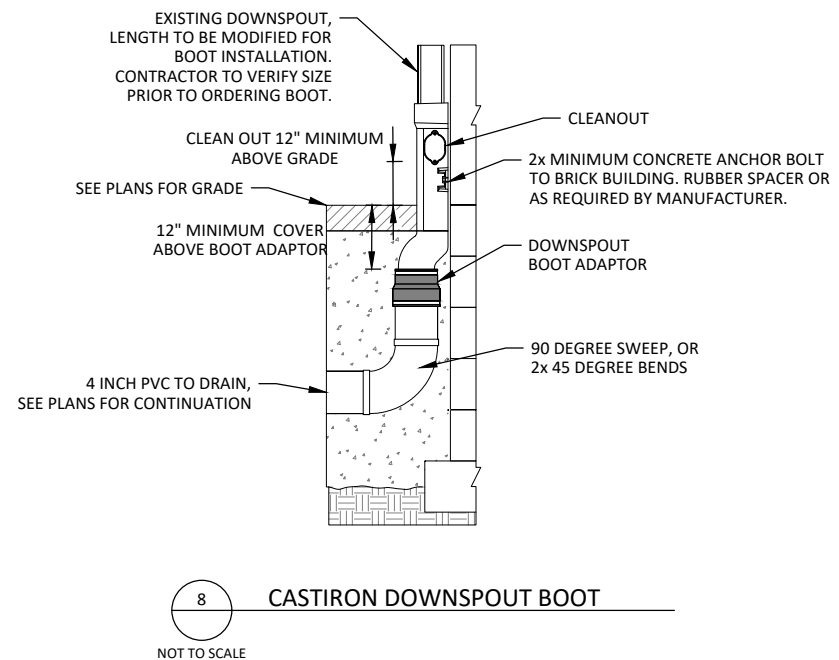
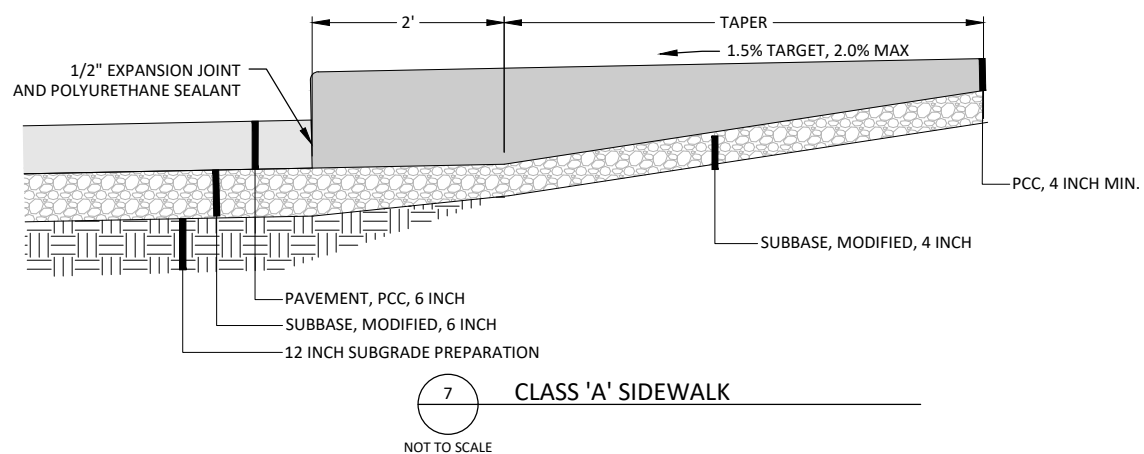
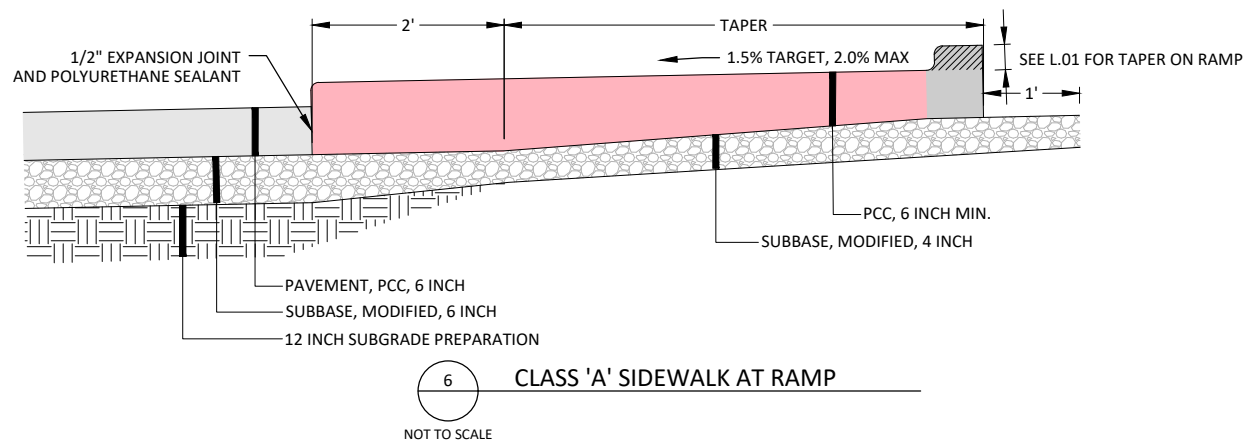
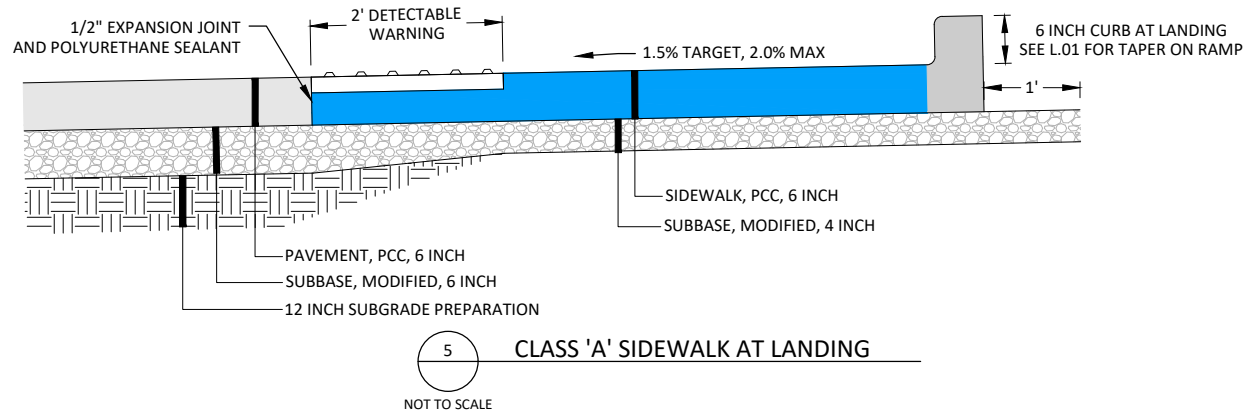
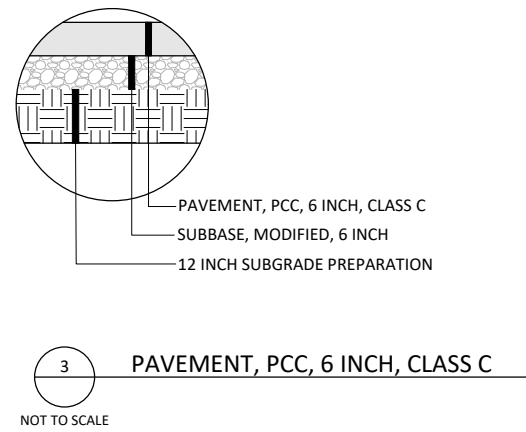
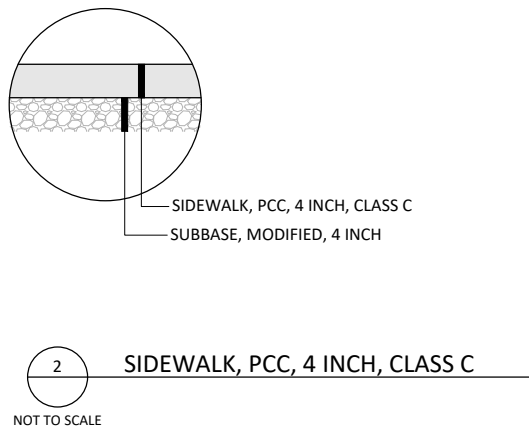
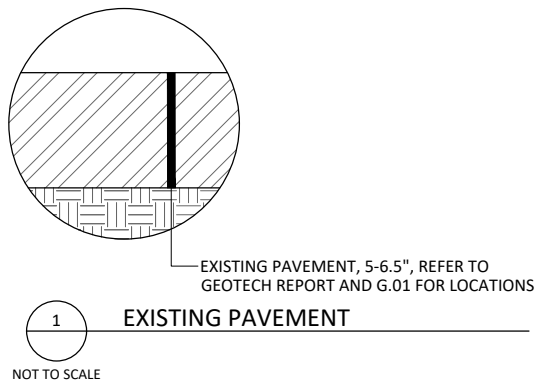
DESIGNED	REV	DESCRIPTION	DATE
FAM	0	ISSUED FOR BID	04/27/2026
TJN			
FAM			
CLIENT PROJ. NO.			
9511.000			

IOWA DEPARTMENT OF ADMINISTRATIVE SERVICES  
DPS POST 13 - UPPER PARKING LOT REPLACEMENT

LEGEND

SHEET  
A.02

THIS SHEET SET IS INTENDED TO BE PLOTTED IN COLOR



© Bolton & Menk, Inc. 2025. All Rights Reserved. 11/14/2025 12:18:00 PM 4/27/2026 10:16:56 AM



430 E GRAND AVENUE, SUITE 101  
DES MOINES, IA 50309  
Phone: (515) 259-9190  
Email: DesMoines@bolton-menk.com  
www.bolton-menk.com

DESIGNED	REV	DESCRIPTION	DATE
FAM	0	ISSUED FOR BID	04/27/2026
DRAWN			
TJN			
CHECKED			
FAM			
CLIENT PROJ. NO.			
9511.000			

IOWA DEPARTMENT OF ADMINISTRATIVE SERVICES  
DPS POST 13 - UPPER PARKING LOT REPLACEMENT

TYPICAL SECTIONS

SHEET  
B.01



THIS SHEET SET IS INTENDED TO BE PLOTTED IN COLOR

ESTIMATED PROJECT QUANTITIES - BASE BID					
ITEM NO.	ITEM CODE	ITEM	UNIT	QUANTITY	AS-BUILT QTY.
1	2010-C	CLEARING, GRUBBING, AND LANDSCAPE REMOVALS	LS	1	
2	2010-D-1	TOPSOIL, ON-SITE	CY	161	
3	2010-E	EXCAVATION, CLASS 10	CY	210	
4	2010-G	SUBGRADE PREPARATION	SY	1418	
5	2010-J	SUBBASE, MODIFIED, 6 INCHES	SY	1418	
6	4020-E-1	TILE, TRENCHED, 4 INCH	LF	60	
7	4020-999-A	DOWNSPOUT BOOT, CASTIRON	LS	1	
8	7010-A	PAVEMENT, PCC, 6 INCH, C4-WR-C20	SY	1307	
9	7030-A-1	REMOVAL OF SIDEWALK	SY	90	
10	7030-E	SIDEWALK, PCC, 4 INCH	SY	59	
11	7030-E	SIDEWALK, CLASS 'A', PCC, 6 INCH	SY	39	
12	7030-G	DETECTABLE WARNING	SF	12	
13	7030-999-A	REMOVAL OF STOOP SLAB	LS	1	
14	7030-999-A	REPLACE STOOP SLAB ON EXISTING STOOP FOUNDATION	LS	1	
15	7040-H	PAVEMENT REMOVAL	SY	1309	
16	8020-B	PAINTED PAVEMENT MARKINGS, SOLVENT/WATERBORNE	STA	2	
17	8020-G	PAINTED SYMBOLS AND LEGENDS, WATERBORNE OR SOLVENT	EA	1	
18	8040-A	TRAFFIC SIGNS, ADA	EA	1	
19	8040-A	TRAFFIC SIGNS, VISITOR, 12X18	EA	2	
20	8040-D	PERFORATED SQUARE STEEL TUBE POSTS	LF	30	
21	8040-G	PERFORATED SQUARE STEEL TUBE POSTS ANCHORS, BREAKAWAY, 2 INCH	EA	3	
22	8040-I	REMOVE SIGNS	EA	4	
23	8040-999-X	SALVAGE AND REINSTALL MAILBOX	EA	1	
24	9010-B	HYDRAULIC SEEDING, SEEDING, FERTILIZING, AND MULCHING, TYPE 1 - PERMANENT LAWN	AC	0.3	
25	9020-A	SOD	SY	230	
26	9040-F-1	WATTLE, COMPOST/MULCH SOCK	LF	1000	
27	9040-F-2	WATTLE, REMOVAL	LF	1000	
28	11010-A	CONSTRUCTION SURVEY	LS	1	
29	11020-A	MOBILIZATION	LS	1	
30	11030-A	MAINTENANCE OF POSTAL SERVICE	LS	1	

ESTIMATED PROJECT QUANTITIES (ALTERNATE A)					
ITEM NO.	ITEM CODE	ITEM	UNIT	QUANTITY	AS-BUILT QTY.
A1	7030-999-A	REMOVAL OF STOOP FOUNDATION, INSTALL STOOP FOUNDATION AND SLAB	LS	1	

© Bolton & Menk, Inc. 2025. All Rights Reserved. P:\UADADMIN\_31\_1412514248660\CAD\CAD14181816C01.dwg 4/27/2026 10:17:02 AM



430 E GRAND AVENUE, SUITE 101  
DES MOINES, IA 50309  
Phone: (515) 259-9190  
Email: DesMoines@bolton-menk.com  
www.bolton-menk.com

DESIGNED	REV	DESCRIPTION	DATE
FAM	0	ISSUED FOR BID	04/27/2026
DRAWN			
TJN			
CHECKED			
FAM			
CLIENT PROJ. NO.	9511.000		

IOWA DEPARTMENT OF ADMINISTRATIVE SERVICES  
DPS POST 13 - UPPER PARKING LOT REPLACEMENT

QUANTITIES

SHEET  
C.01

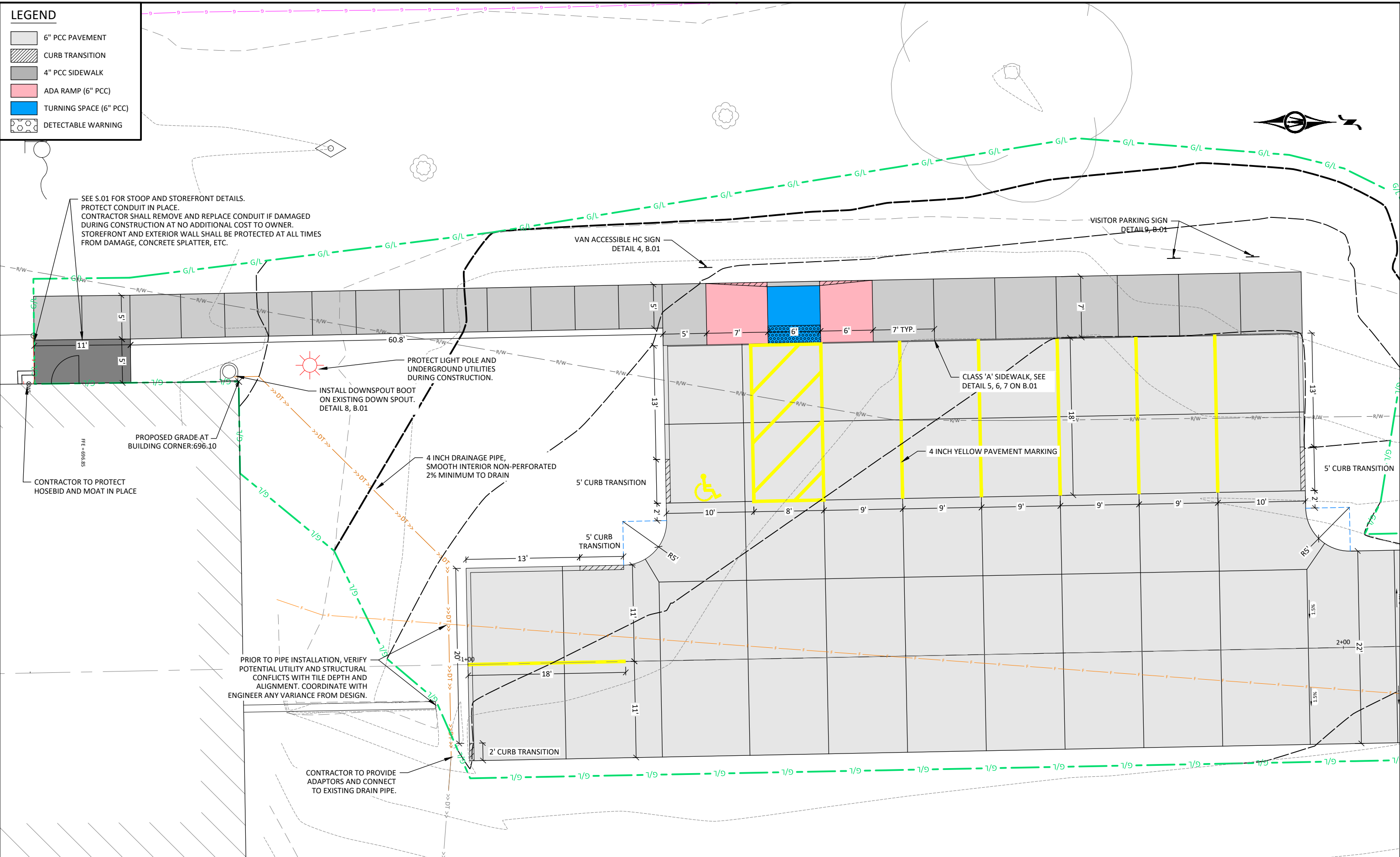


**LEGEND**

	6" PCC PAVEMENT
	CURB TRANSITION
	4" PCC SIDEWALK
	ADA RAMP (6" PCC)
	TURNING SPACE (6" PCC)
	DETECTABLE WARNING



THIS SHEET SET IS INTENDED TO BE PLOTTED IN COLOR



© Bolton & Menk, Inc. 2026. All Rights Reserved. P:\ADMIN\31\_1412514286600\CAD\CAD141816001.dwg 4/20/2026 10:27:13 AM



430 E GRAND AVENUE, SUITE 101  
DES MOINES, IA 50309  
Phone: (515) 259-9190  
Email: DesMoines@bolton-menk.com  
www.bolton-menk.com

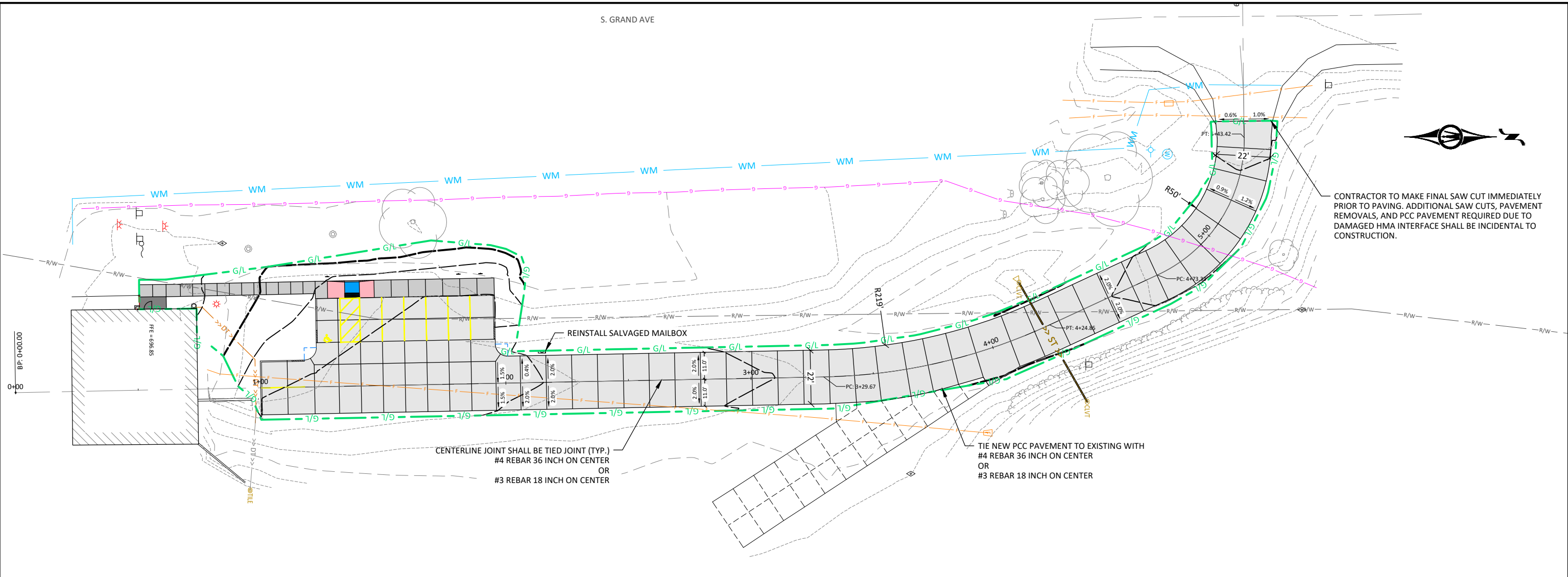
DESIGNED	REV	DESCRIPTION	DATE
FAM	0	ISSUED FOR BID	04/27/2026
TJN			
CHECKED			
FAM			
CLIENT PROJ. NO.	9511.000		

IOWA DEPARTMENT OF ADMINISTRATIVE SERVICES  
DPS POST 13 - UPPER PARKING LOT REPLACEMENT  
PARKING LOT LAYOUT

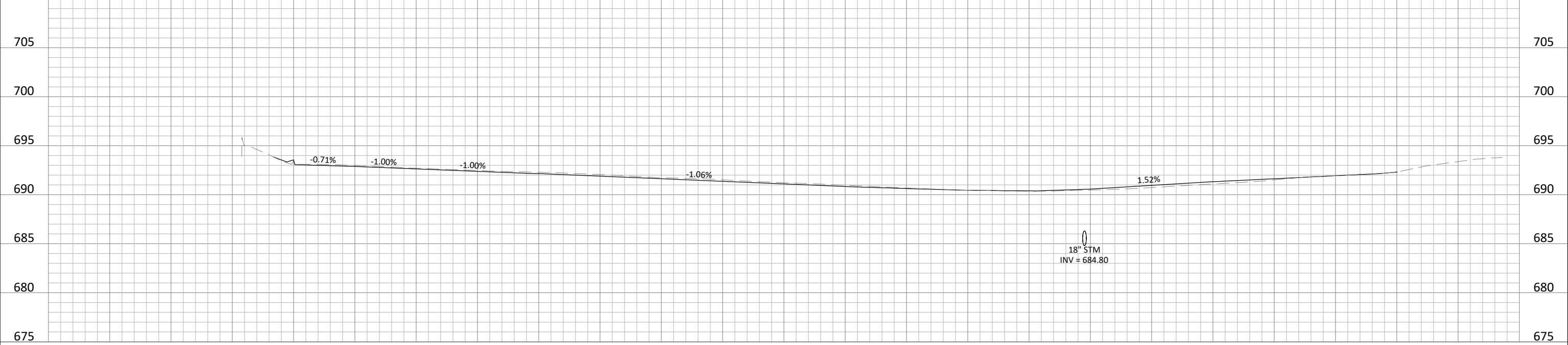
SHEET  
D.01



CONTRACTOR TO MAKE FINAL SAW CUT IMMEDIATELY PRIOR TO PAVING. ADDITIONAL SAW CUTS, PAVEMENT REMOVALS, AND PCC PAVEMENT REQUIRED DUE TO DAMAGED HMA INTERFACE SHALL BE INCIDENTAL TO CONSTRUCTION.



THIS SHEET SET IS INTENDED TO BE PLOTTED IN COLOR



© Bolton & Menk, Inc. 2026. All Rights Reserved. 11/14/2025 10:27:15 AM



430 E GRAND AVENUE, SUITE 101  
DES MOINES, IA 50309  
Phone: (515) 259-9190  
Email: DesMoines@bolton-menk.com  
www.bolton-menk.com

DESIGNED	REV	DESCRIPTION	DATE
FAM	0	ISSUED FOR BID	04/27/2026
DRAWN			
TJN			
CHECKED			
FAM			
CLIENT PROJ. NO.			
9511.000			

IOWA DEPARTMENT OF ADMINISTRATIVE SERVICES  
DPS POST 13 - UPPER PARKING LOT REPLACEMENT  
PLAN & PROFILE - ENTRANCE DRIVE

SHEET  
D.02

UNDERGROUND UTILITIES:  
 UTILITIES SHOWN ON THESE PLANS ARE DRAWN IN BASED ON FIELD LOCATES, UTILITY MAPS, AND HISTORICAL DATA. NOT ALL UTILITIES WITHIN THIS SITE MAY BE SHOWN, AND NOT ALL UTILITIES SHOWN MAY BE ACCURATE. CONTRACTOR SHALL HAVE ALL PUBLIC AND PRIVATE UTILITIES LOCATED AND POTHOLED PRIOR TO CONSTRUCTION AS NECESSARY TO PROTECT UTILITIES IN PLACE.



S. GRAND AVE

FULL DEPTH SAW CUT AT REMOVAL LIMITS. DOUBLE SAW CUT AS NECESSARY TO PROTECT PAVEMENT TO REMAIN AND MAINTAIN CLEAN JOINT TO MATCH TO. NO ADDITIONAL PAYMENT WILL BE MADE FOR ADDITIONAL SAW CUTS, REMOVALS OR PCC PAVEMENT NECESSARY TO REMEDY DAMAGED EDGE DURING CONSTRUCTION

BASE BID:  
 DEMO EXISTING STOOP SLAB. COORDINATE WITH ENGINEER IMMEDIATELY FOLLOWING REMOVAL OF TOP SLAB. SEE ESTIMATE REFERENCE NOTES FOR CONTINUATION OF BASE BID OR ALT A

REMOVE LANDSCAPE BLOCK, PLANT MATERIAL AND ROCK MULCH

REMOVE LANDSCAPE EDGE AND PLANT MATERIAL WITHIN. PROTECT LIGHT POLE AND UTILITIES.

REMOVE SIGN

REMOVE 90 SY SIDEWALK PAVEMENT

PROTECT EXISTING CULVERT TO REMAIN. SEE PROFILE ON D.02 FOR DETAILS ON CROSSING DEPTH

REMOVE AND SALVAGE MAILBOX FOR REINSTALL. SEE J.01 FOR TEMPORARY MAILBOX LOCATION SEE D.02 FOR REINSTALLATION LOCATION.

CONTRACTOR TO PROTECT EXISTING STOREFRONT AND BUILDING EXTERIOR FROM DAMAGE AT ALL TIMES. PROTECTION SHALL BE SELF SUPPORTED AND NOT AFFIXED TO THE BUILDING.

REMOVE 1309 SY DRIVEWAY PAVEMENT SEE GEOTECH REPORT FOR DETAILS.

PRIOR TO PAVEMENT REMOVALS, CUT PIPE TO PREVENT DAMAGE OF PIPE TO REMAIN. REMOVE DRAIN INTAKE, SEE IMAGE ON BOTTOM RIGHT OF THIS PAGE LIMIT PIPE REMOVALS ONLY AS NECESSARY TO FACILITATE CONNECTION AND INSTALLATION AS SHOWN ON D.01

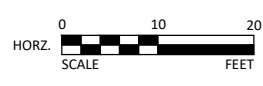
FULL DEPTH SAW CUT AT REMOVAL LIMITS. PROTECT PAVEMENT TO REMAIN.

THIS SHEET SET IS INTENDED TO BE PLOTTED IN COLOR

VIEW OF DRAIN INTAKE FROM WEST, LOOKING EAST.



© Bolton & Menk, Inc. 2026. All Rights Reserved. 4/27/2026 10:17:25 AM



430 E GRAND AVENUE, SUITE 101  
 DES MOINES, IA 50309  
 Phone: (515) 259-9190  
 Email: DesMoines@bolton-menk.com  
 www.bolton-menk.com

DESIGNED	REV	DESCRIPTION	DATE
FAM	0	ISSUED FOR BID	04/27/2026
DRAWN			
TJN			
CHECKED			
FAM			
CLIENT PROJ. NO.	9511.000		

IOWA DEPARTMENT OF ADMINISTRATIVE SERVICES  
 DPS POST 13 - UPPER PARKING LOT REPLACEMENT  
 EXISTING CONDITIONS

SHEET  
 F.01

THIS SHEET SET IS INTENDED TO BE PLOTTED IN COLOR



POINT NORTHING-EASTING DATA				
POINT NUMBER	RAW DESCRIPTION	ELEVATION	NORTH	EAST
1	VFCP CP	696.000	352785.58	2181987.27
2	VFCP 5/8" ALUM DOT ROW	683.740	353225.94	2182014.39
3	VFCP CP	689.040	353066.42	2182081.26

**SOIL BORING NOTES:**  
SEE GEOTECHNICAL REPORT FOR DETAILS.

ALIGNMENT - CENTERLINE											
NUMBER	START STATION	END STATION	LENGTH	DELTA	RADIUS	CHORD	START N	START E	END N	END E	LINE / CHORD DIRECTION
L1	0+00	3+29.67	329.67				352701.27	2182048.18	353030.88	2182041.77	N1° 06' 51"W
C1	3+29.67	4+24.85	95.18	23°42'40"	230.00	94.50	353030.88	2182041.77	353122.97	2182020.56	N12° 58' 11"W
L2	4+24.85	4+73.33	48.48				353122.97	2182020.56	353166.97	2182000.20	N24° 49' 30"W
C2	4+73.33	5+43.42	70.09	65°50'08"	61.00	66.30	353166.97	2182000.20	353202.36	2181944.14	N57° 44' 35"W
L3	5+43.42	6+42.88	99.45				353202.36	2181944.14	353201.21	2181844.69	S89° 20' 21"W

© Bolton & Menk, Inc. 2026. All Rights Reserved. 4/27/2026 10:17:36 AM



430 E GRAND AVENUE, SUITE 101  
DES MOINES, IA 50309  
Phone: (515) 259-9190  
Email: DesMoines@bolton-menk.com  
www.bolton-menk.com

DESIGNED	REV	DESCRIPTION	DATE
FAM	0	ISSUED FOR BID	04/27/2026
DRAWN			
TJN			
CHECKED			
FAM			
CLIENT PROJ. NO.			
9511.000			


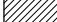



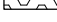
IOWA DEPARTMENT OF ADMINISTRATIVE SERVICES  
DPS POST 13 - UPPER PARKING LOT REPLACEMENT

REFERENCES AND BENCHMARKS

SHEET  
G.01

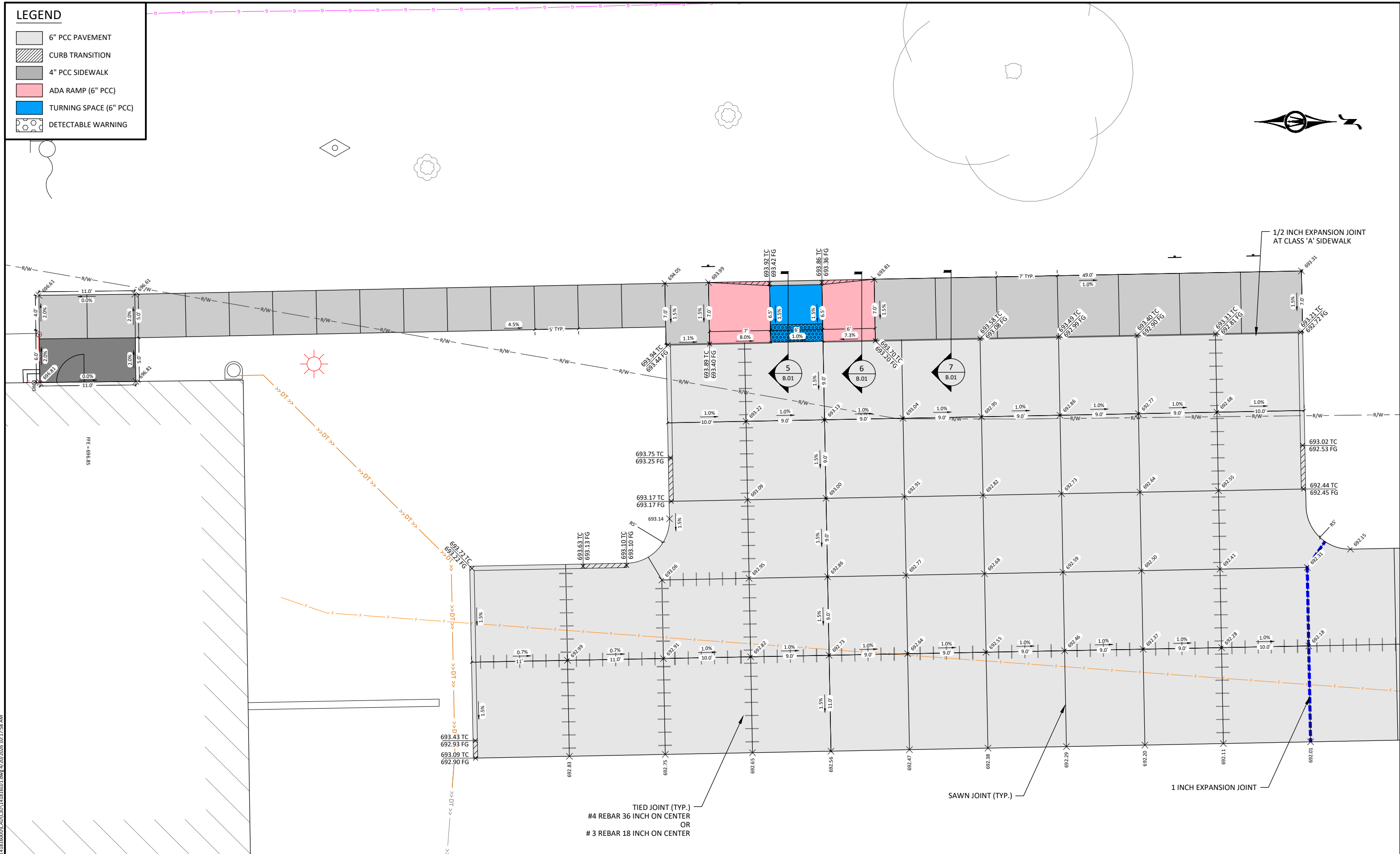


**LEGEND**

-  6" PCC PAVEMENT
-  CURB TRANSITION
-  4" PCC SIDEWALK
-  ADA RAMP (6" PCC)
-  TURNING SPACE (6" PCC)
-  DETECTABLE WARNING



THIS SHEET SET IS INTENDED TO BE PLOTTED IN COLOR



© Bolton & Menk, Inc. 2025. All Rights Reserved. 11/14/2024 10:17:58 AM



430 E GRAND AVENUE, SUITE 101  
DES MOINES, IA 50309  
Phone: (515) 259-9190  
Email: DesMoines@bolton-menk.com  
www.bolton-menk.com

DESIGNED	REV	DESCRIPTION	DATE
FAM	0	ISSUED FOR BID	04/27/2026
DRAWN	TJN		
CHECKED	FAM		
CLIENT PROJ. NO.	9511.000		

IOWA DEPARTMENT OF ADMINISTRATIVE SERVICES  
DPS POST 13 - UPPER PARKING LOT REPLACEMENT  
JOINTING LAYOUT

SHEET  
L.01

**NOTE:**

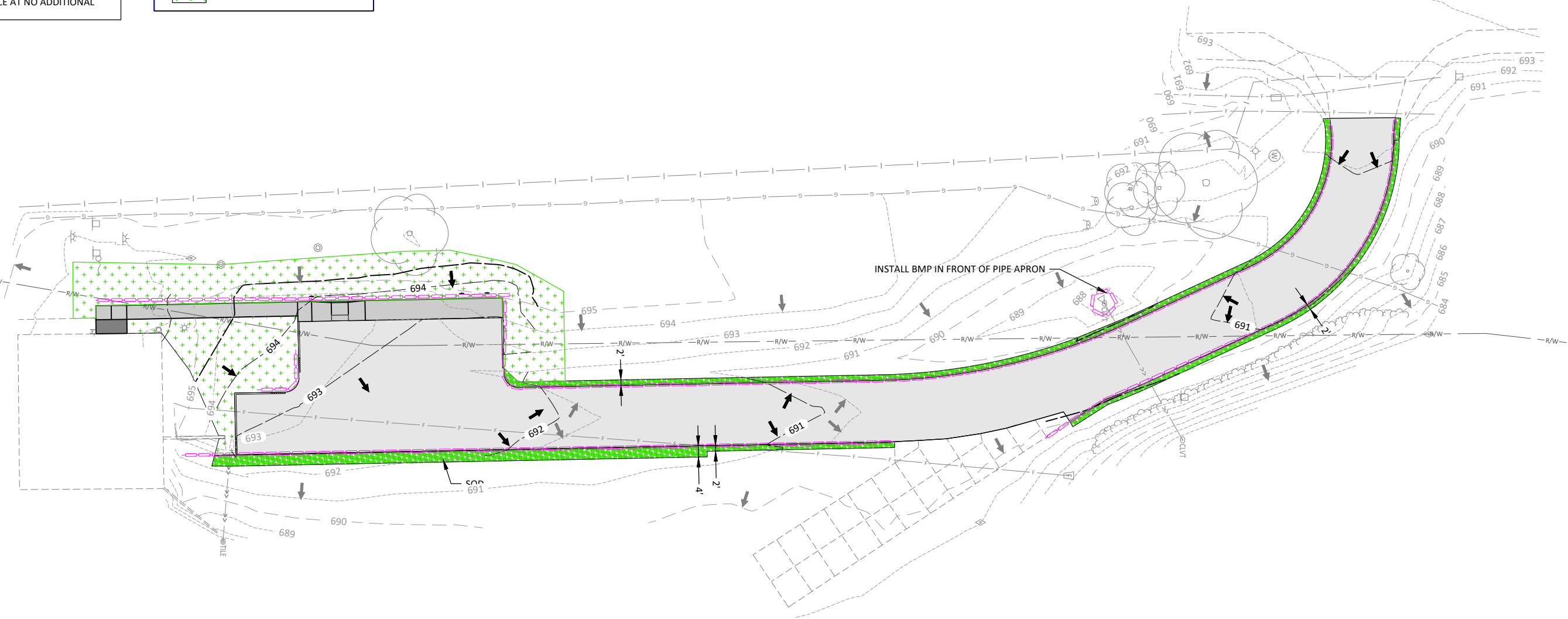
1. TEMPORARY EROSIONS CONTROL BEST MANAGEMENT PRACTICES (BMPs) AS SHOWN ON THIS PLAN SHEET THAT WILL NOT BE INCORPORATED INTO THE FINAL PRODUCT ARE RECOMMENDATIONS. THE CONTRACTOR IS RESPONSIBLE FOR DESIGNING, INSTALLING, AND MODIFYING BMPs AS NECESSARY TO PREVENT ILLICIT DISCHARGE FROM THE PROJECT SITE.
2. SOD SHALL BE INSTALL ON DOWN HILL SIDE EDGE OF PAVEMENT AS SHOWN.
3. INSTALL COMPOST/MULCH SOCK OR OTHER SELF-WEIGHTING TYPE BMP ON PAVEMENT UP-STREAM FROM SOD UNTIL SOD IS FULLY ROOTED. REMOVE BMP IN ITS ENTIRETY FROM SITE. COMPOST/MULCH FROM BMP SHALL NOT BE SPREAD ON SITE.
4. CONTRACTOR SHALL MINIMIZE DISTURBANCE TO SITE AS SHOW BY LIMITS OF SOD AND SEEDING.
5. CONTRACTOR IS RESPONSIBLE FOR THEIR CONSTRUCTION OPERATIONS ON SITE AND SHALL RE-ESTABLISH GRADE AND RE-SEED ANY ADDITIONAL DISTURBANCE AT NO ADDITIONAL COST TO THE OWNER.

**EROSION CONTROL LEGEND**

- MAJOR CONTOUR - EXISTING
- - - MINOR CONTOUR - EXISTING
- MAJOR CONTOUR - PROPOSED
- - - MINOR CONTOUR - PROPOSED
- COMPOST/MULCH SOCK
- SOD
- TYPE 1 LAWN - HYDROSEED



THIS SHEET SET IS INTENDED TO BE PLOTTED IN COLOR



© Bolton & Menk, Inc. 2026. All Rights Reserved. P:\ADMIN\31\_14\2024\242600\CAD\CAD14181600.dwg 4/27/2026 10:18:15 AM



430 E GRAND AVENUE, SUITE 101  
DES MOINES, IA 50309  
Phone: (515) 259-9190  
Email: DesMoines@bolton-menk.com  
www.bolton-menk.com

DESIGNED	REV	DESCRIPTION	DATE
FAM	0	ISSUED FOR BID	04/27/2026
DRAWN			
TJN			
CHECKED			
FAM			
CLIENT PROJ. NO.			
9511.000			

IOWA DEPARTMENT OF ADMINISTRATIVE SERVICES  
DPS POST 13 - UPPER PARKING LOT REPLACEMENT  
EROSION CONTROL PLAN - POST CONSTRUCTION

SHEET  
R.01

**GENERAL NOTES**

- DESIGN CRITERIA:
- CODES AND STANDARDS:  
2024 IBC/ASCE 7-22  
OCCUPANCY/RISK CATEGORY II
  - DESIGN DEAD LOADS:  
CONCRETE: 150 PCF
  - DESIGN LIVE LOADS:  
EXIT WAYS: 100 PSF
  - DESIGN SNOW LOADS:  
GROUND SNOW LOAD:  $P_g = 38$  PSF
  - SEISMIC LOAD:  
SEISMIC IMPORTANCE FACTOR:  $I_s = 1.00$   
MAPPED SPECTRAL ACCELERATION, SHORT:  $S_s = 0.15$   
MAPPED SPECTRAL ACCELERATION, 1-SEC:  $S_1 = 0.079$   
SITE CLASS: D  
DESIGN SPECTRAL ACCELERATION, SHORT:  $S_{DS} = 0.14$   
DESIGN SPECTRAL ACCELERATION, 1-SEC:  $S_{D1} = 0.11$   
SEISMIC DESIGN CATEGORY: B

**MISCELLANEOUS**

- THE CONTRACTOR SHALL FIELD VERIFY ALL EXISTING CONDITIONS, SUCH AS DIMENSIONS, ELEVATIONS, CONFIGURATION, AND DETAILS OF EXISTING STRUCTURES AND CONDITIONS WHERE THEY AFFECT NEW CONSTRUCTION. NOTIFY ENGINEER IMMEDIATELY IF ANY DEVIATIONS FROM ANTICIPATED CONDITIONS ARE DISCOVERED. CONFIRM FIELD VERIFIED CONDITIONS & DIMENSIONS WITH ENGINEER PRIOR TO START OF CONSTRUCTION.
- COORDINATION W/ COMPLETE SET OF CONTRACT DOCUMENTS: THE CONTRACT DOCUMENTS ARE ONE COMPLETE, COMPREHENSIVE AND INCLUSIVE DOCUMENT CONSISTING OF THE AGGREGATE COLLECTION OF DRAWINGS AND SPECIFICATIONS FOR ALL OF THE DISCIPLINE DIVISIONS (E.G. SITE, CIVIL, ETC.). NO SINGLE DISCIPLINE DIVISION IS AUTONOMOUS NOR DOES IT STAND-ALONE FROM ANY OR ALL OTHER DISCIPLINE DIVISIONS.
- VERIFY ALL DIMENSIONS, ELEVATIONS, DEPRESSIONS, INSERTS, EMBEDDED ITEMS, EQUIPMENT PADS AND SUPPORTS, OPENINGS, DETAILS, AND CONDITIONS BY CROSS-REFERENCING TO CIVIL SECTIONS.
- SEE CIVIL DRAWINGS FOR DIMENSIONS NOT SHOWN ON STRUCTURAL DRAWINGS.
- NO OPENING SHALL BE MADE IN ANY STRUCTURAL MEMBER WITHOUT THE WRITTEN APPROVAL OF THE ENGINEER.
- NO CHANGE IN SIZE OR DIMENSION OF STRUCTURAL MEMBERS SHALL BE MADE WITHOUT THE WRITTEN APPROVAL OF THE ENGINEER.
- OPENINGS 1'-4" AND LESS ON A SIDE ARE GENERALLY NOT SHOWN ON THE STRUCTURAL DRAWINGS. REFER TO CIVIL DRAWINGS FOR COORDINATION OF SUCH OPENINGS.
- THE STRUCTURE IS DESIGNED TO FUNCTION AS A UNIT UPON COMPLETION. THE CONTRACTOR IS RESPONSIBLE FOR FURNISHING ALL TEMPORARY BRACING AND/OR SUPPORT THAT MAY BE REQUIRED AS THE RESULT OF THE CONTRACTOR'S CONSTRUCTION METHODS AND/OR SEQUENCES.
- DO NOT SCALE THESE DRAWINGS, USE DIMENSIONS.
- THE CONTRACTOR SHALL INFORM THE ENGINEER IN WRITING OF ANY DEVIATION FROM THE CONTRACT DOCUMENTS. THE CONTRACTOR SHALL NOT BE RELIEVED OF THE RESPONSIBILITY FOR SUCH DEVIATION BY THE ENGINEER'S APPROVAL OF SHOP DRAWINGS, PRODUCT DATA, ETC., UNLESS HE HAS SPECIFICALLY INFORMED THE ENGINEER OF SUCH DEVIATION AT THE TIME OF SUBMISSION, AND THE ENGINEER HAS GIVEN WRITTEN APPROVAL TO THE SPECIFIC DEVIATION.
- ALL THINGS WHICH, IN THE OPINION OF THE CONTRACTOR, APPEAR TO BE DEFICIENCIES, OMISSIONS, CONTRADICTIONS, OR AMBIGUITIES, IN THE PLANS AND SPECIFICATIONS SHALL BE BROUGHT TO THE ATTENTION OF THE ENGINEER. PLANS AND/OR SPECIFICATIONS WILL BE CORRECTED, OR WRITTEN INTERPRETATION OF THE ALLEGED DEFICIENCY, OMISSION, CONTRADICTION OR AMBIGUITY WILL BE MADE BY THE ENGINEER BEFORE THE EFFECTED WORK PROCEEDS.
- ASTM AND OTHER CODE STANDARDS REFERENCED IN THESE DRAWINGS SHALL BE THE VERSION REFERENCED BY THE APPLICABLE VERSION OF IBC.

**SUBMITTALS**

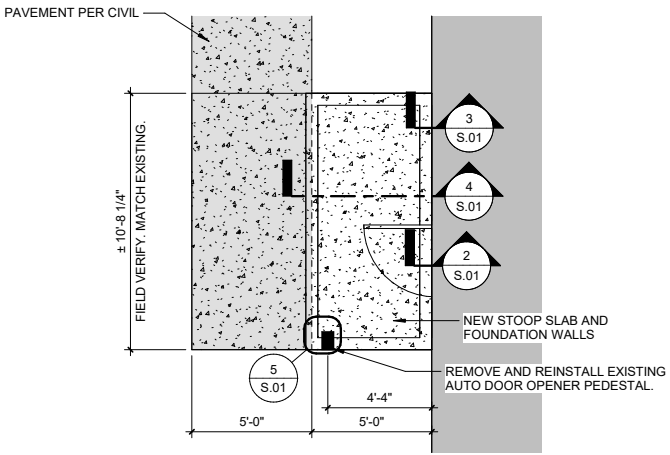
- THE FOLLOWING ITEMS SHALL BE SUBMITTED FOR REVIEW:
  - CONCRETE MIX DESIGNS, INCLUDING PRODUCT DATA
  - CONCRETE REINFORCEMENT
  - JOINT SEALANT
- CONTRACTOR SHALL REVIEW EACH SUBMITTAL FOR CONFORMANCE WITH CONTRACT DOCUMENTS. SUBMITTALS NOT REVIEWED BY THE CONTRACTOR AND STAMPED SUCH WILL BE REJECTED AND SENT BACK TO THE CONTRACTOR FOR REVIEW. IT IS THE CONTRACTOR'S RESPONSIBILITY TO VERIFY DIMENSIONS AND QUANTITIES AND TO COORDINATE WORK AFFECTED BY OTHER TRADES.
- SUBMITTALS SHALL BE REVIEWED BY THE ENGINEER FOR THE LIMITED PURPOSE OF CHECKING FOR COMPLIANCE WITH THE DESIGN INTENT SHOWN IN THE CONTRACT DOCUMENTS.

**FOUNDATIONS**

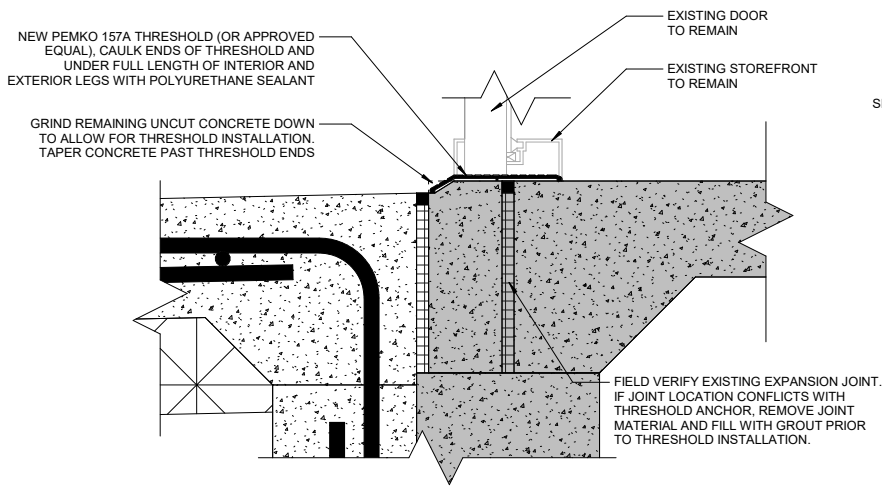
- DESIGN:
- GEOTECHNICAL EXPLORATION HAS NOT BEEN PERFORMED FOR THIS PROJECT. THE FOUNDATION HAS BEEN DESIGNED IN ACCORDANCE WITH THE MAXIMUM ASSUMED VALUES PERMITTED BY THE 2024 INTERNATIONAL BUILDING CODE.
  - BACKFILLING:
    - DO NOT BACKFILL PIT WALLS UNTIL ADEQUATE TEMPORARY BRACING IS INSTALLED.
    - BACKFILL UNDER FOUNDATION WITH CONCRETE OR AS APPROVED BY SOILS ENGINEER.
- SPREAD FOOTINGS:
- FOOTINGS SHALL BEAR ON SOIL CAPABLE OF SUSTAINING A NET BEARING PRESSURE UNDER FULL SERVICE LIVE AND DEAD LOAD AS FOLLOWS:  
1,500 PSF FOR FOUNDATIONS BEARING ON SUITABLE NATIVE SOIL OR ENGINEERED FILL
  - ALL BEARING MATERIAL SHALL BE INSPECTED BY A QUALIFIED TECHNICIAN PRIOR TO CONCRETE PLACEMENT. A QUALIFIED TECHNICIAN SHALL BE THE SOLE JUDGE AS TO THE SUITABILITY OF THE BEARING MATERIAL. FOOTING ELEVATIONS SHALL BE ADJUSTED AS REQUIRED. OVEREXCAVATION MAY BE REQUIRED.
  - BOTTOM OF EXTERIOR FOOTINGS SHALL BEAR A MINIMUM OF 3'-6" BELOW FINAL GRADE.

**CONCRETE**

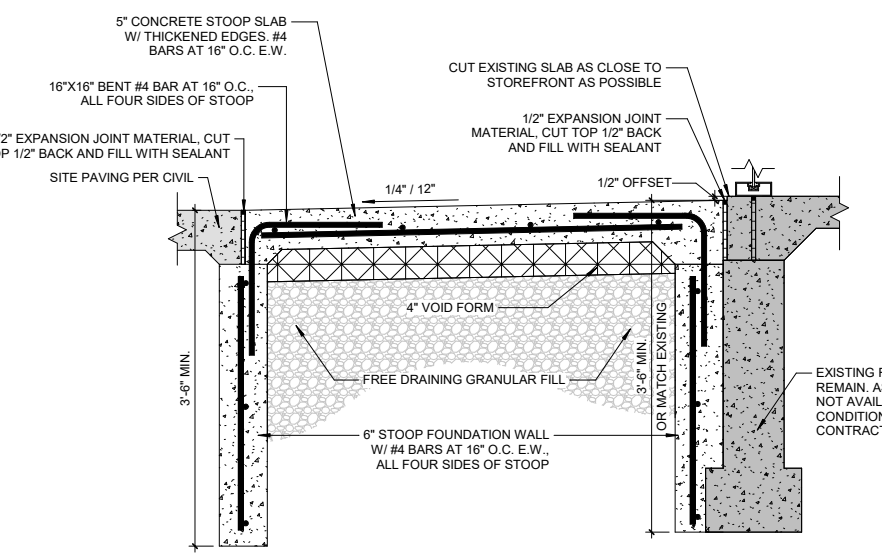
- CONCRETE SHALL BE CONSTRUCTED IN ACCORDANCE WITH IBC CHAPTER 19 AND ACI 318.
- PROVIDE CONCRETE MIX DESIGNS COMPLYING WITH ACI PRC-211.1 RECOMMENDATIONS. COMPRESSIVE STRENGTHS,  $f_c$ , INDICATED ARE AT 28 DAYS. CONCRETE MATERIALS AND MIXTURES FOR BUILDING ELEMENTS SHALL BE AS FOLLOWS:
  - CONCRETE MATERIALS:
    - CEMENT: ASTM C150, TYPE I OR ASTM C595, TYPE II
    - AGGREGATES: ASTM C33
    - FLY ASH: ASTM C618, CLASS C OR F; LIMIT TO 25% OF TOTAL CEMENTITIOUS MATERIAL
    - ADMIXTURES: AS RECOMMENDED IN ACI PRC-211.1 AND AT RATES RECOMMENDED BY MANUFACTURER:
      - AIR ENTRAINMENT: ASTM C260
      - WATER REDUCING, RETARDING AND/OR ACCELERATING: ASTM C494, TYPE A-G
  - DESIGN MIXTURES:
    - FOUNDATION WALLS AND STOOP SLABS:
      - $f_c = 4,500$  PSI
      - w/c = 0.45 MAX
      - AIR CONTENT = 6% +/- 1.5%
      - SLUMP = 4"-8" FOR CONCRETE w/ VERIFIED SLUMP OF 2'-4" BEFORE ADDING HIGH-RANGE WATER-REDUCING OR PLASTICIZING ADMIXTURE
      - MAX. AGGREGATE SIZE = 1"
- REINFORCING SHALL CONFORM TO ASTM A615, GR. 60, INCLUDING TIES AND STIRRUPS.
- ALL REINFORCING SHALL BE DETAILED, FABRICATED AND PLACED, IN ACCORDANCE WITH ACI DETAILING MANUAL. NO FIELD BENDING OF REINFORCEMENT SHALL BE PERMITTED EXCEPT WHERE SPECIFICALLY NOTED IN THE DRAWINGS.
- ALL REINFORCING SHALL BE SUPPORTED IN FORMS, SPACED WITH NECESSARY ACCESSORIES AND SHALL BE SECURELY WIRED TOGETHER, IN ACCORDANCE WITH CRS' REINFORCING BAR DETAILING". ALL DOWELS, ANCHOR RODS, EMBEDS, SLEEVES AND OTHER EMBEDDED ITEMS SHALL BE SECURELY TIED AND SUPPORTED PRIOR TO POURING CONCRETE. NO WET-SETTING SHALL BE PERMITTED.
- MINIMUM CONCRETE COVER, UNLESS NOTED OTHERWISE:
  - UNFORMED SURFACE IN CONTACT WITH THE GROUND: 3 IN.
  - FORMED SURFACES EXPOSED TO EARTH OR WEATHER: 1 1/2 IN. FOR #5 BAR OR SMALLER 2 IN FOR #6 BAR OR LARGER
  - FORMED SURFACES NOT EXPOSED TO EARTH OR WEATHER:
    - WALLS, SLABS: 3/4 IN.
    - BEAMS, GIRDERS AND COLUMNS (TO TIES OR STIRRUPS): 1 1/2 IN.
- ALL CONSTRUCTION JOINTS SHOWN ON DRAWINGS SHALL BE INCORPORATED INTO THE STRUCTURE, UNLESS THEIR ELIMINATION IS APPROVED BY THE ENGINEER. ADDITIONAL CONSTRUCTION JOINTS, REQUIRED TO FACILITATE CONSTRUCTION, SHALL BE LOCATED AT POINTS OF MINIMUM SHEAR AND SHALL BE DETAILED ON SHOP DRAWINGS. REINFORCEMENT SHALL PASS CONTINUOUSLY THROUGH THE JOINT.
- ALL ABUTTING CONCRETE MEMBERS SHALL BE DOWELED TOGETHER, UNLESS POURED MONOLITHICALLY. DOWELS SHALL BE EQUAL IN SIZE AND SPACING TO THE REINFORCING IN THE ADJACENT MEMBER. WHERE CONCRETE IS PLACED AGAINST HARDENED CONCRETE, THE SURFACE SHALL BE ROUGHENED TO MINIMUM 1/4" AMPLITUDE.
- STOOP SLABS SHALL HAVE A BROOMED FINISH. WHERE FINISH IS NOT SPECIFIED, CONFORM TO REQUIREMENTS OF ACI 301.
- CIVIL DRAWINGS SHALL BE REFERRED TO FOR DRAINS, SLEEVES, OUTLET BOXES, CONDUIT, ETC.
- LAP SPLICES SHALL BE A MINIMUM OF 24".
- PROVIDE STANDARD HOOKS ON BARS TERMINATING AT A CONCRETE FACE UNLESS NOTED (E.G.: SLAB EDGES, EXPANSION JOINTS, AND AT TOP, BOTTOM AND ENDS OF WALLS, ETC.).
- FOLLOW RECOMMENDATIONS OF ACI PRC-305 AND ACI PRC-306 WHEN CONCRETING DURING HOT OR COLD WEATHER, RESPECTIVELY.
- FORMWORK DESIGN AND CONSTRUCTION SHALL COMPLY WITH GUIDELINES OF ACI PRC-347 TO PROVIDE FORMWORK THAT WILL PRODUCE CONCRETE COMPLYING WITH TOLERANCES OF ACI SPEC-117.
- CONCRETE SHALL BE CURED AND PROTECTED IN ACCORDANCE WITH ACI PRC-308.
- WHERE INDICATED IN DRAWINGS, PROVIDE SLAB ISOLATION JOINT FILLER COMPLYING WITH ASTM D1751, CELLULOSE FIBER. JOINT FILLER SHALL BE 1/2" THICK, HEIGHT EQUAL TO SLAB THICKNESS, WITH REMOVABLE TOP SECTION FORMING 1/2" DEEP SEALANT POCKET AFTER REMOVAL.
- JOINT SEALANT: SONOLASTIC MASTERSEAL NP-1 (OR APPROVED EQUAL). ONE COMPONENT MOISTURE CURING POLYURETHANE. ASTM C920, TYPE S, GRADE NS, CLASS 35. USES A AND T. BACKER ROD IS REQUIRED BELOW JOINT SEALANT PER MANUFACTURERS WRITTEN INSTRUCTIONS.



**1 FOUNDATION PLAN**  
SCALE: 1/4" = 1'-0"



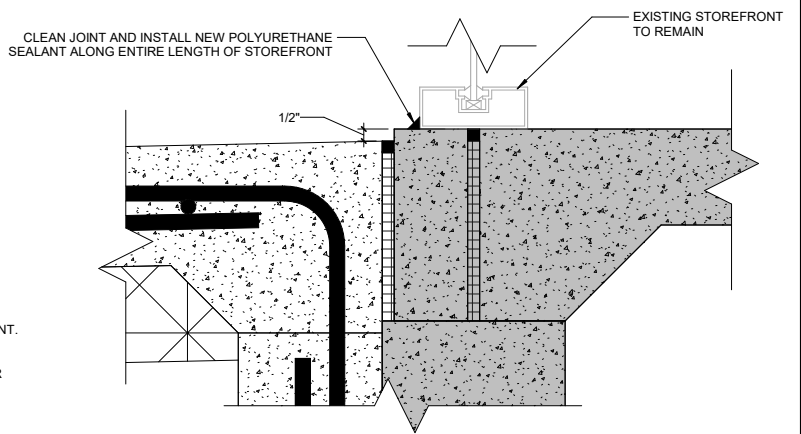
**2 DOOR THRESHOLD**  
SCALE: 3" = 1'-0"



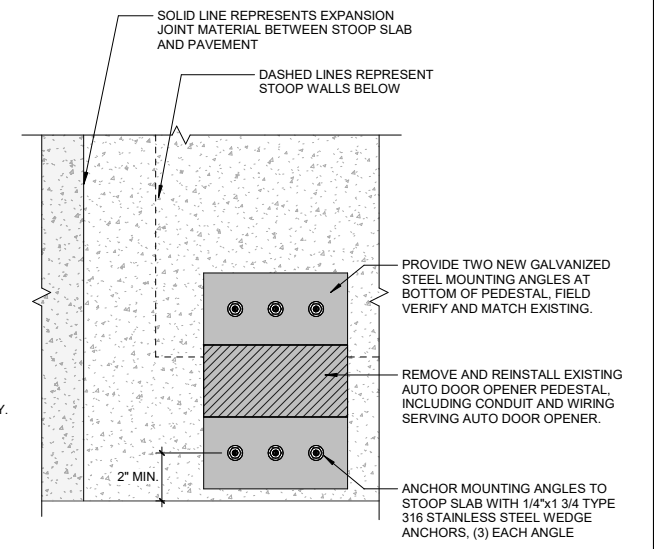
**4 NEW STOOP DETAIL**  
SCALE: 1" = 1'-0"

**STOOP REPLACEMENT SCOPE OF WORK:**

- BASE BID
  - DEMOLISH EXISTING STOOP SLAB AND COORDINATE WITH ENGINEER TO EVALUATE CONDITION OF EXISTING STOOP FOUNDATION WALLS. IF EXISTING FOUNDATION WALLS APPEAR TO BE APPROPRIATELY SIZED AND CONSTRUCTED OF SOUND CONCRETE CAPABLE OF RECEIVING NEW DOWELS, BASE BID SCOPE WILL BE SELECTED. OTHERWISE, ALTERNATE A SCOPE WILL BE REQUIRED. STOREFRONT THRESHOLD, STOREFRONT CAULKING, AND DOOR OPENER PEDESTAL REPLACEMENT ARE REQUIRED FOR EITHER SCOPE OF WORK.
- BASE BID
  - DRILL AND EPOXY INDICATED BENT DOWELS INTO EXISTING STOOP FOUNDATION WALLS AND REPLACE STOOP SLAB AS INDICATED.
- ALTERNATE A
  - REMOVE STOOP FOUNDATIONS IN THEIR ENTIRETY AND REPLACE AS INDICATED.



**3 STOREFRONT**  
SCALE: 3" = 1'-0"



**5 PEDESTAL REPLACEMENT**  
SCALE: 3" = 1'-0"

THIS SHEET SET IS INTENDED TO BE PLOTTED IN COLOR

© Bolton & Menk, Inc. 2026. All Rights Reserved. C:\Users\charismadowning\OneDrive\Documents\BOLTON\_MENK\111418116\_6\_BOPD\_IL.dwg 3/16/2026 9:52:34 AM



430 E GRAND AVENUE, SUITE 101  
DES MOINES, IA 50309  
Phone: (515) 259-9190  
Email: DesMoines@bolton-menk.com  
www.bolton-menk.com

DESIGNED	REV	DESCRIPTION	DATE
XXX	0	ISSUED FOR BID	04/27/2026
XXX			
XXX			
CLIENT PROJ. NO.	9511.000		

IOWA DEPARTMENT OF ADMINISTRATIVE SERVICES		SHEET <b>S.01</b>
DPS POST 13 - UPPER PARKING LOT REPLACEMENT		
STOOP REPLACEMENT AND STOREFRONT MODIFICATIONS		