

CONSTRUCTION DRAWINGS FOR:

RESTROOM AND SHOWER BUILDING

PROJECT # 23-03-17-09

CONSERVATION AND RECREATION DIVISION  
LAND AND WATERS BUREAU

[illegible]

|  |  |
|--|--|
|  |  |
|  |  |

| AUTHORIZATION TO BID  |      |
|---|------|
| ENGINEERING BUREAU CHIEF                                    | DATE |
| AUTHORIZED - PARKS   WILDLIFE   FISHERIES   LAW ENFORCEMENT | DATE |

|                        |  |                                |  |                       |  |                        |  |
|------------------------|--|--------------------------------|--|-----------------------|--|------------------------|--|
| COVER SHEET            |  | RESTROOM AND SHOWER BUILDING   |  | CLEAR LAKE STATE PARK |  | CLEAR LAKE, IOWA 50428 |  |
| 6490 SOUTH SHORE DRIVE |  |                                |  |                       |  |                        |  |
| Date                   |  | Description                    |  |                       |  |                        |  |
| 06-20-2025             |  | 100% BIDDING DOCUMENTS         |  |                       |  |                        |  |
|                        |  |                                |  |                       |  |                        |  |
|                        |  |                                |  |                       |  |                        |  |
|                        |  |                                |  |                       |  |                        |  |
| DRAWN BY:<br>BDP       |  | PROJECT NUMBER:<br>23-03-17-09 |  |                       |  |                        |  |
| CHKD BY:               |  | DATE:<br>06-20-2025            |  |                       |  |                        |  |
| SHEET No:              |  |                                |  |                       |  |                        |  |
| A001                   |  |                                |  |                       |  |                        |  |



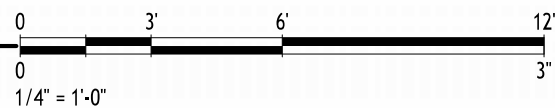
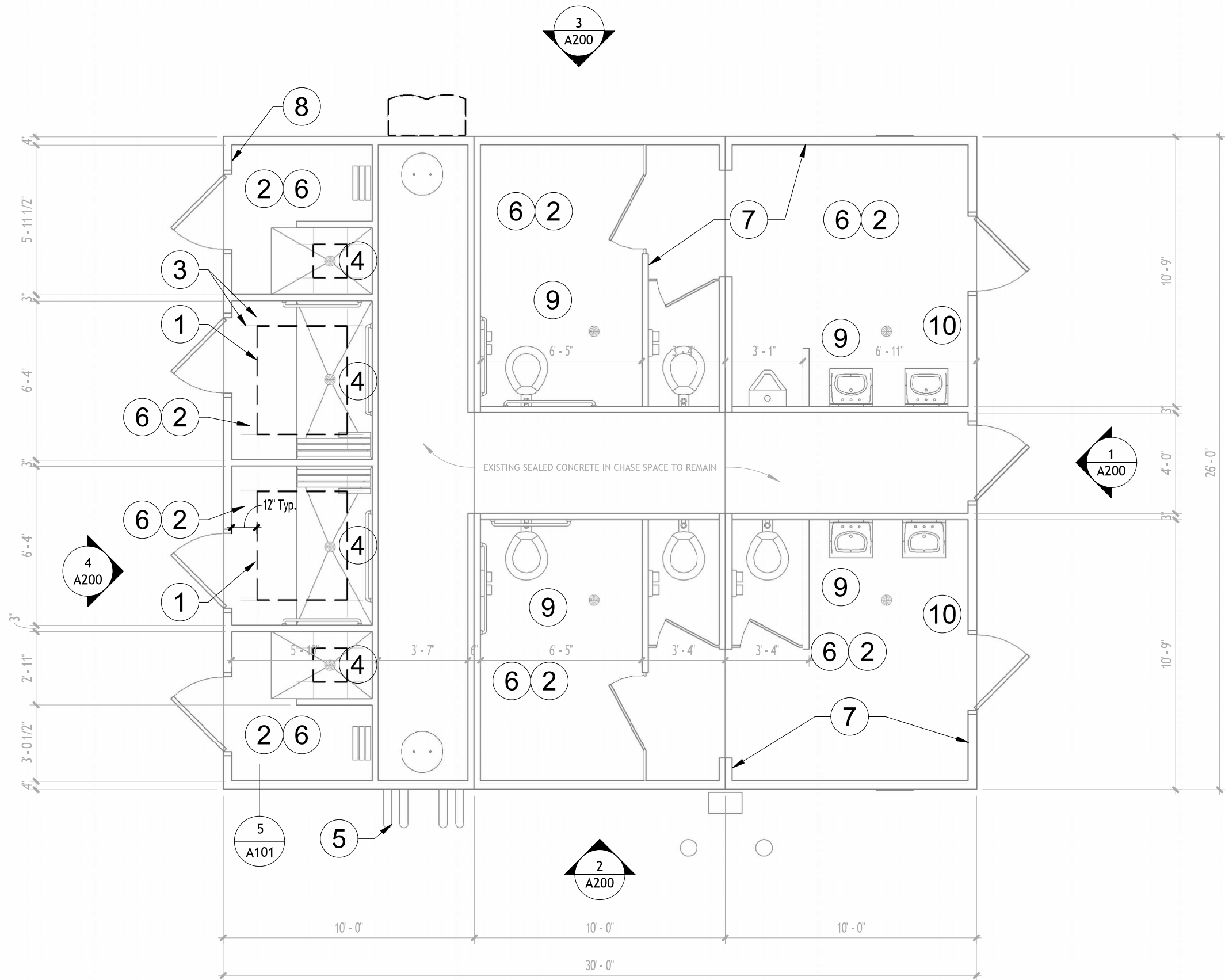
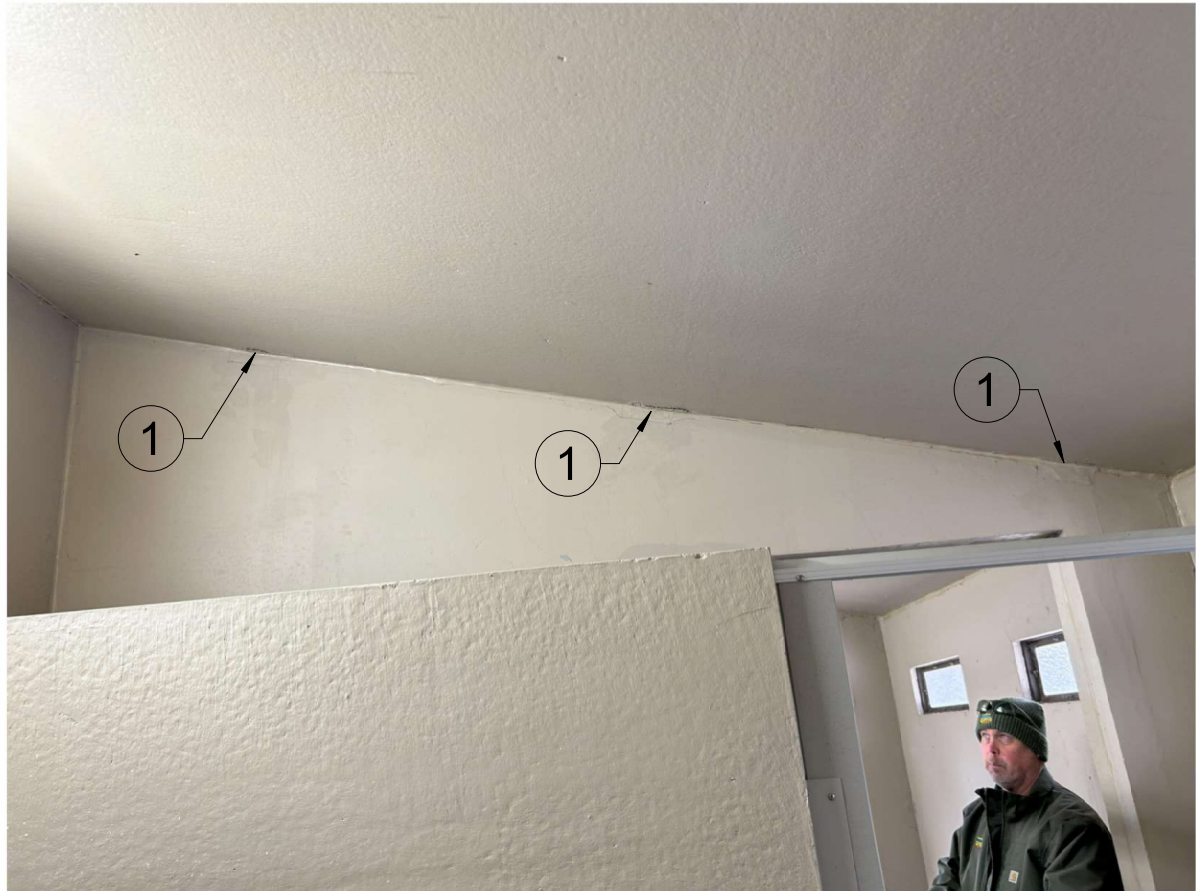


# A003









- 1 CUT OUT CENTER SECTION OF CONCRETE FLOOR. USE CARE TO NOT DAMAGE EXISTING PLUMBING DURING REMOVAL. REPOSITION AND SECURE DRAIN 1 INCH BELOW FINISHED FLOOR LEVEL. FILL AREA WITH NEW CONCRETE. MATCH EXISTING, ADJACENT SLAB THICKNESS. DOWEL SLAB INTO EXISTING SLAB @ 16" OC. PROVIDE 2.9X2.9X4" WWF CENTERED IN NEW SLAB. SLOPE SURFACE TO DRAIN.
- 2 GRIND OLD EPOXY COATING OFF OF CONCRETE SURFACE. GRIND TO CONCRETE SURFACE PROFILE(CSP) OF 2-3.
- 3 FILL OVERCUT AREAS WITH CONCRETE PATCHING COMPOUND. FILL ENTIRE VOID.
- 4 REPLACE ALL SHOWER VALVES WITH PUSH BUTTON METERED VALVES(4 TOTAL) AND REPLACE SHOWER HEADS WITH VANDAL RESISTANT/ADJUSTABLE NOZZLE TYPE SHOWER HEADS(8 TOTAL).
- 5 REMOVE DRINKING FOUNTAIN. INSTALL EXTERIOR BOTTLE FILLER IN SAME LOCATION. BASIS OF DESIGN: MURDOCK M-824 SERIES.
- 6 NEW ANTI-SLIP EPOXY FLOOR COATING. SEE SPECIFICATIONS FOR MANUFACTURER AND ADDITIVES.
- 7 REPAINT ALL INTERIOR WALL AND CEILING SURFACES.
- 8 REPLACE LIGHT SWITCHES WITH MOTION SENSOR ACTIVATED AND 30 MIN SHUT-OFF TIMER(ALL SHOWER UNITS - 4 TOTAL)
- 9 INSPECT DISPENSERS, GRAB BARS, FIXTURES AND PLUMBING. REPAIR OR REPLACE AS NEEDED.
- 10 REPLACE WALL SWITCH WITH SWITCHED MOTION SENSOR WITH 30-MINUTE AUTO SHUT-OFF TIMER. SWITCH TO ACTUATE WALL EXHAUST FAN AND LIGHTS SIMULTANEOUSLY.

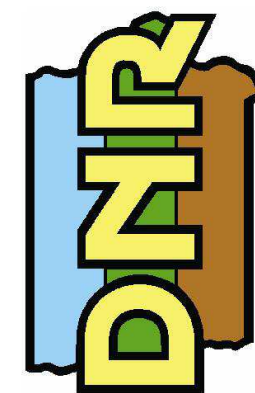
SHEET No.

# A100





- IOWA DEPARTMENT OF
- 
- NATURAL RESOURCES



- ENGINEERING SERVICES -  
6200 PARK AVENUE STE. 200  
DES MOINES, IA 50321  
P: 515.725.8200  
F: 515.725.8202

## ROOF PLANS

## RESTROOM AND SHOWER BUILDING

RESTROOM AND SHOWER BUILDING  
CLEAR LAKE STATE PARK

6490 SOUTH SHORE DRIVE  
CLEAR LAKE, IOWA 50428


| Date             | Revision                       |
|------------------|--------------------------------|
| 06-02-2025       | PRELIMINARY                    |
| 06-20-2025       | 100% BIDDING DOCUMENTS         |
|                  |                                |
|                  |                                |
|                  |                                |
|                  |                                |
| DRAWN BY:<br>BDP | PROJECT NUMBER:<br>23-03-17-09 |
| CHK'D BY:<br>-   | DATE:<br>06-20-2025            |
| SHEET No:        |                                |

# A101





- 1 REPAIR EXTERIOR DOOR SLABS AND FRAMES. PAINT INTEGRATED LOUVERS WHERE APPLICABLE. INSPECT RODENT SCREENS IN LOUVERS AND REPLACE AS REQUIRED. SEE SPECIFICATIONS FOR PAINTING REQUIREMENTS.
- 2 RESTROOM AND SHOWER EXHAUST FANS TO BE REPLACED. REPLACE WITH SIMILAR 12" MINIMUM UL LISTED EXHAUST FAN WITH 1-YEAR MANUFACTURER WARRANTY (BASIS OF DESIGN: GREENHECK SE-12-432-86). FANS TIME TO RUN 30 MINUTES AFTER ACTUATED BY MOTION SENSOR. PAINT METAL FAN SHROUDS BLACK. SEE SPECIFICATIONS FOR PAINTING REQUIREMENTS.
- 3 REPLACE EXTERIOR LIGHTING FIXTURES WITH LED FIXTURES. FIXTURES TO BE MOTION ACTIVATED, PHOTO SENSORED, AND 5-MINUTE TIME SHUT-OFF. BASIS OF DESIGN: PL 13014 35 WATT FIXTURE
- 4 PAINT LOUVERED VENTS. INSPECT RODENT SCREEN AND REPLACE AS NECESSARY. SEE SPECIFICATIONS FOR PAINTING REQUIREMENTS.
- 5 CLEAN EXTERIOR WITH LIGHT PRESSURE WASH. USE MILD DETERGENT AND SOFT BRISTLED BRUSH AT EXCESSIVELY DIRTY AREAS. PAINT EXTERIOR WALLS SIMILAR COLOR. SEE SPECIFICATIONS FOR PAINTING REQUIREMENTS.
- 6 REMOVE OLD BASE SEALANT AND PREP JOINT FOR NEW SEALANT AND BACKER ROD WHERE REQUIRED. PLACE 1/2" PENE TRURETHANE BASED EXTERIOR SEALANT IN JOINT. BASIS OF DESIGN: SIKAFLEX PROP SELF-LEVELING SEALANT - SANDSTONE.
- 7 REMOVE EXISTING DRINKING FOUNTAIN. CLEAN AND PREP BUILDING SURFACE FOR INSTALLATION OF NEW BOTTLE FILLER UNIT.
- 8 REMOVE EXISTING SEALANT IN PANEL JOINTS AND CLEAN JOINT SURFACES. INSTALL NEW JOINT TREATMENT SIMILAR TO DETAIL 4/A100.
- 9 CLEAN EXCESSIVELY DIRTY AREAS. SEAL CONCRETE AFTER CLEANING. BASIS OF DESIGN: DIRECT COLORS - EASY SEAL - SATIN
- 10 PAINT PIPE SIMILAR COLOR. SEE SPECIFICATION FOR PAINTING REQUIREMENTS.
- 11 PAINT BOLLARDS WITH EXTERIOR GRADE HI-VIZ YELLOW PAINT. SEE SPECIFICATIONS FOR PAINTING REQUIREMENTS.
- 12 INSPECT AND CLEAN VENTILATION PIPES. REPLACE INSET/BIRD SCREENS AS NECESSARY. SCRUB AND CLEAN STAINED AREAS AS NECESSARY.
- 13 CLEAN, PREP, AND NEATLY PAINT WINDOW FRAMES. SEE SPECIFICATIONS FOR PAINTING REQUIREMENTS.
- 14 REMOVE TOP SHIELD FROM DOOR PRIOR TO PAINTING. REPLACE DAMAGED SHIELDS AS NEEDED. REINSTALL DAMAGED SHIELDS.
- 15 REMOVE DOOR SWEEP FROM DOOR PRIOR TO PAINTING. REPLACE DAMAGED SWEEPS AS NEEDED. REINSTALL UNDAMAGE SWEEPS.
- 16 REMOVE DOOR FROM FRAME AND REMOVE DOOR CLOSERS AND HINGES PRIOR TO PAINTING. REPLACE DAMAGED HINGES AND CLOSERS AS NEEDED. REINSTALL UNDAMAGE HINGES AND CLOSERS.



RESTROOM AND SHOWER BUILDING

CLEAR LAKE STATE PARK

6490 SOUTH SHORE DRIVE CLEAR LAKE, IOWA 50428

| Date       | Revision               |
|------------|------------------------|
| 06-02-2025 | PRELIMINARY            |
| 06-20-2025 | 100% BIDDING DOCUMENTS |
|            |                        |
|            |                        |
|            |                        |
|            |                        |
| DRAWN BY:  | PROJECT NUMBER:        |
| BDP        | 23-03-17-09            |
| CHK'D BY:  | DATE:                  |
| -          | 06-20-2025             |

# A200

TOP OF WALL 8'-0"

FFL 0'-0"

1, 2, 3, 5, 6, 7, 11, 12

## 1 EAST ELEVATION