

Section 01030
ALTERNATES/ALTERNATIVES

PART 1 - GENERAL

1.01 SUMMARY:

- A. Section Includes: General requirements pertaining to:
 - 1. The Work specified for accepted alternate bids, the materials and methods referenced in other sections to achieve specified work, and the coordination and modification of related work and surrounding construction to complete the project under each accepted bid.
- B. Related Sections: Drawings and Contract.

1.02 DESCRIPTION OF ALTERNATE BIDS:

- A. Base Bid: Provide a total Bid for line items #1 through #5.
- B. Alternate Bid No. 1: Install new column and garage door. Provide a total Bid for line items #6 and #7
- C. Alternate Bid No. 2: Upgrade electrical service entrance to code and install 200-amp service panel. Provide a total Bid for line items #8 and #9

1.03 ALTERNATE BID REQUIREMENTS:

- A. Bidder is NOT required to submit an alternate bid.
- B. Alternate bids, if awarded, will be considered as a basis for award. The low bid will be analyzed on the base bid and any combination of alternate bids. The Owner reserves the right to award the base bid and all alternates, that in the Owner's opinion, will provide the most cost-effective end product. The Owner's decision is final.
- C. Provide alternate bid for the cost of the service requested in each alternate, either as an addition or as a reduction in the total bid.
- D. The Owner may award any alternate bid or bids at the time of contract award. Any alternate bids awarded as part of the original contract will not extend the project completion time beyond that specified.

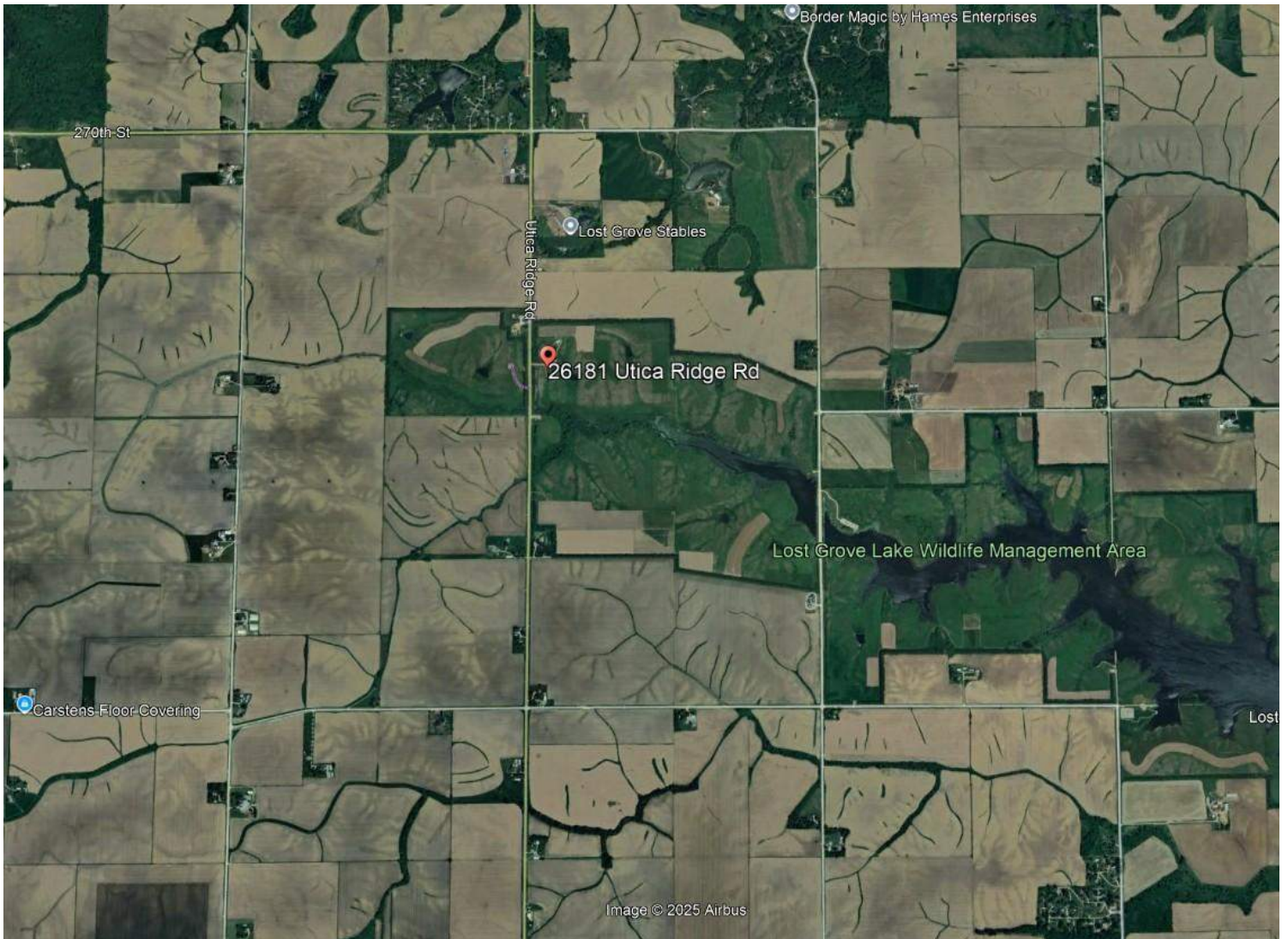
END OF SECTION 01030

LOST GROVE BOAT STORAGE FACILITY

26181 Utica Ridge Rd, Long Grove, IA 52756

Scott County

DNR Project #26-06-82-01





Front view, looking north. Remove and replace all existing metal siding, roofing and trim work with like style 29-guage ribbed tin. Remove and replace existing gutters/downspouts with 6-inch K style gutters – 4 downspouts. Remove existing sliding door hardware. Dispose of off-site. Building is approximately 42'WX80'LX14'H. See ERI section for more details. Base bid item.



Side view, looking east. Remove and replace all existing metal siding, roofing and trim work with like style 29-guage ribbed tin. Dispose of off-site. See ERI section for more details. Base bid item.



Rear view, looking south. Remove and replace all existing metal siding, roofing and trim work with like style 29-guage ribbed tin. Remove and replace existing gutters/downspouts with 6-inch K style gutters – 4 downspouts. Dispose of off-site. See ERI section for more details. Base bid item.



Rear view, looking southwest. Remove and replace all existing metal siding, roofing and trim work with like style 29-guage ribbed tin. Remove and replace existing gutters/downspouts with 6-inch K style gutters – 4 downspouts. Dispose of off-site. See ERI section for more details. Base bid item.



Side view, looking west. Remove and replace all existing metal siding, roofing and trim work with like style 29-guage ribbed tin. Dispose of off-site. See ERI section for more details. Base bid item.



Ribbed panel style.



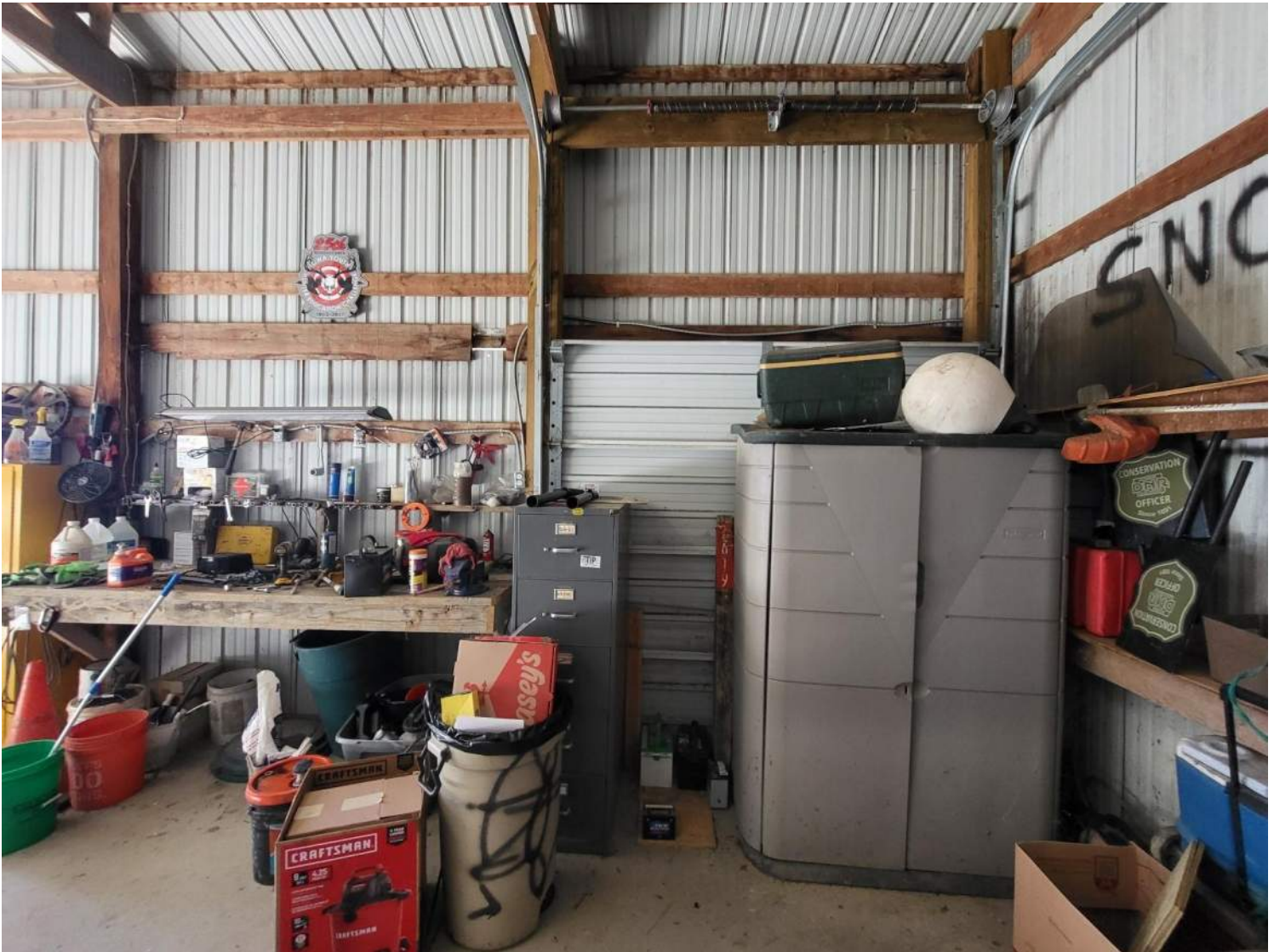
Building interior. The building will be empty during the project and does not need to be fully buttoned up at the end of every day.



This storage area will need to be protected from inclement weather at all times. The building will be empty during the project and does not need to be fully buttoned up at the end of each day.



Header on 18'W door that needs an additional 2'X12' added. See ERI section for more details. Base bid item.



Column spacing is currently 10'. A new column (6" X 6" treated posted) will need to be installed (4 foot bury) to accommodate a 12' wide door. A new double 2"X12" header and side girt will also need to be installed. The building will be empty during the project. See ERI section for more details. Alternate bid #1 item.

Supply and install 12'W X 14'H sectional, non-insulated garage door with opener and remotes. See ERI section for more details. Alternate bid item#1 item.



Existing electrical service entrance. It needs to be brought up to code. See ERI section for more details. Alternate bid #2 item.



Existing electrical service panel. Remove and replace with 200-amp panel with breakers. See ERI section for more details. Alternate bid #2 item.



Existing electrical service panel. Remove and replace with 200-amp panel with breakers. See ERI section for more details. Alternate bid #2 item.

LOST GROVE BOAT STORAGE FACILITY

Approximate Building Size - 42'W X 80'L X 14'H

DNR Project #26-06-82-01

Item No.	Description	Quantity	Unit
1	29 Gauge Ribbed Tin	6912	SF
2	Metal Trim	1	LS
3	6-Inch Gutters	160	LF
4	3" X 4" downspouts	176	LF
5	Repair header on 18'W garage door	1	LS
	Alternate #1		
6	Install new 6" X 6" column	1	LS
7	12'W X 14'H sectional, non-insulated garage door with hardware and remotes	1	LS
	Alternate #2		
8	Upgrade existing electrical service entrance	1	LS
9	200-amp service panel	1	LS

Bid

Item

ESTIMATE REFERENCE INFORMATION

- 1 Remove and replace all existing metal roofing, siding and trim work. Including existing sliding door hardware. Dispose of off-site. Install new 29 guage, ribbed metal panels, Nominal 38" width with 36" coverage and 3/4" rib height (similar to existing). Exterior fastened with appropriate length rubber grommeted metal roofing screws. Single pieces. White in color.
- 2 This item includes all trim and work necessary to complete a finished product - corner/ rake/garage/walk door trim, ridge cap, gutter apron, bird stop, snow rail, etc.
- 3 Install approximately 160 LF of 6-inch K style gutters. Front and rear of building. White in color.
- 4 Install approximately 176 LF of 3" X 4" downspouts. 4 in the front and 4 in the rear of building. 1 elbow with each run with a 10' extension at the bottom. White in color.
- 5 Double plate the existing 18' W, 2" X 12" garage door header with another 2" X 12". Modifications to the existing support posts will be necessary to accommodate the additional 2" X 12". Use 3/8" or larger carriage bolts to fasten the pieces together. 2 vertical sets every 2 feet. Removal and reinstallation of portions of the electric door opener/door will be necessary. Verify garage door works correctly after completion.

ALTERNATE #1

- 6 Remove a section of the concrete floor and dig a 10" diameter hole, a minimum of 4-feet deep. A minimum rough opening of 12'-3" is necessary. Fill hole with concrete/sackcrete after 6" X 6" treated column placement. Install new double 2" X 12" header and

2" X 10" wall girt. Cut existing girts to meet up with new column. Cut old column off flush with concrete floor.

- 7 Supply and install new 12'W X 14'H sectional, non-insulated garage door with 3/4 HP chain drive opener, two remotes and exterior keypad opener. Includes all hardware and any incidental framing for door/opener/remote installation. Salvage old door and hardware - leave onsite.

ALTERNATE #2

- 8 Bring existing electrical service entrance up to code. Includes all labor and materials necessary.
- 9 Replace existing service panel with new 200-amp panel. Reconnect all existing electrical runs and switches. Includes new panel/breakers and any other supplies/material necessary to complete installation. Discard old panel off-site.