

1. NORTH ARROW POINT TO CORNERING WORK.
2. LOCATION OF LIGHT FIXTURES, REFRIGERATORS, ETC. SHALL BE PLANNED TO AVOID INTERFERENCE WITH ANY EXISTING OR PROPOSED MECHANICAL, ELECTRICAL, OR PLUMBING SYSTEMS. TRANSFER FOR SYSTEMS SHALL BE SHOWN ON SEPARATE PLANS.
3. COORDINATE WITH ALL TRADES TO CORNER HER WORK. ALL TRADES SHALL BE SHOWN ON SEPARATE PLANS. ALL TRADES SHALL BE SHOWN ON SEPARATE PLANS. ALL TRADES SHALL BE SHOWN ON SEPARATE PLANS.
4. COORDINATE WITH ALL TRADES TO CORNER THE LOCATION OF LIGHT FIXTURES, REFRIGERATORS, ETC. SHALL BE PLANNED TO AVOID INTERFERENCE WITH ANY EXISTING OR PROPOSED MECHANICAL, ELECTRICAL, OR PLUMBING SYSTEMS. TRANSFER FOR SYSTEMS SHALL BE SHOWN ON SEPARATE PLANS.
5. ALL CEILING LIGHT FIXTURES TO BE COVERED ON CEILING. REFRIGERATORS, ETC. SHALL BE PLANNED TO AVOID INTERFERENCE WITH ANY EXISTING OR PROPOSED MECHANICAL, ELECTRICAL, OR PLUMBING SYSTEMS. TRANSFER FOR SYSTEMS SHALL BE SHOWN ON SEPARATE PLANS.
6. ALL CEILING LIGHT FIXTURES TO BE COVERED ON CEILING. REFRIGERATORS, ETC. SHALL BE PLANNED TO AVOID INTERFERENCE WITH ANY EXISTING OR PROPOSED MECHANICAL, ELECTRICAL, OR PLUMBING SYSTEMS. TRANSFER FOR SYSTEMS SHALL BE SHOWN ON SEPARATE PLANS.
7. ALL CEILING LIGHT FIXTURES TO BE COVERED ON CEILING. REFRIGERATORS, ETC. SHALL BE PLANNED TO AVOID INTERFERENCE WITH ANY EXISTING OR PROPOSED MECHANICAL, ELECTRICAL, OR PLUMBING SYSTEMS. TRANSFER FOR SYSTEMS SHALL BE SHOWN ON SEPARATE PLANS.
8. DIMENSION OF BUNGALOW EXTENSIONS TO EXISTING FINISH FLOOR SHALL BE SHOWN ON SEPARATE PLANS.
9. DIMENSION OF BUNGALOW EXTENSIONS TO EXISTING FINISH FLOOR SHALL BE SHOWN ON SEPARATE PLANS.
10. DIMENSION OF BUNGALOW EXTENSIONS TO EXISTING FINISH FLOOR SHALL BE SHOWN ON SEPARATE PLANS.
11. DIMENSION OF BUNGALOW EXTENSIONS TO EXISTING FINISH FLOOR SHALL BE SHOWN ON SEPARATE PLANS.

CEILING PLAN SYMBOLS LEGEND

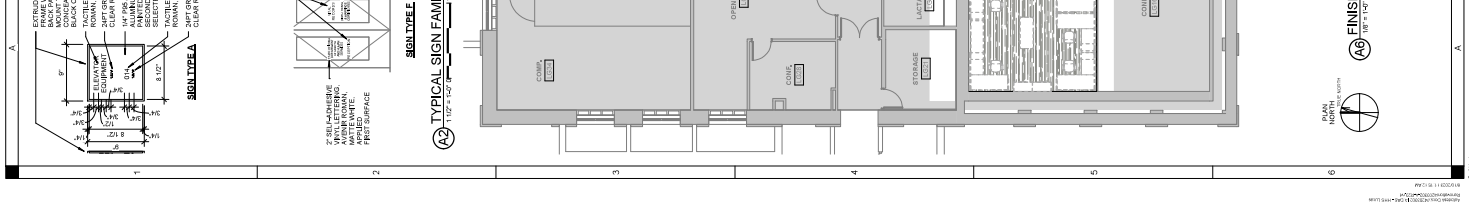
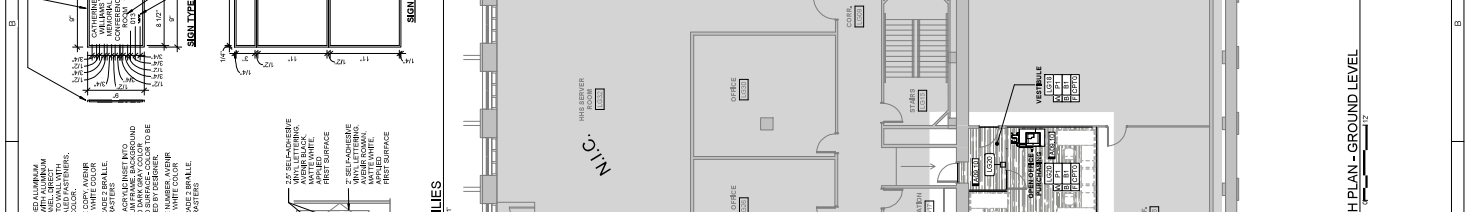
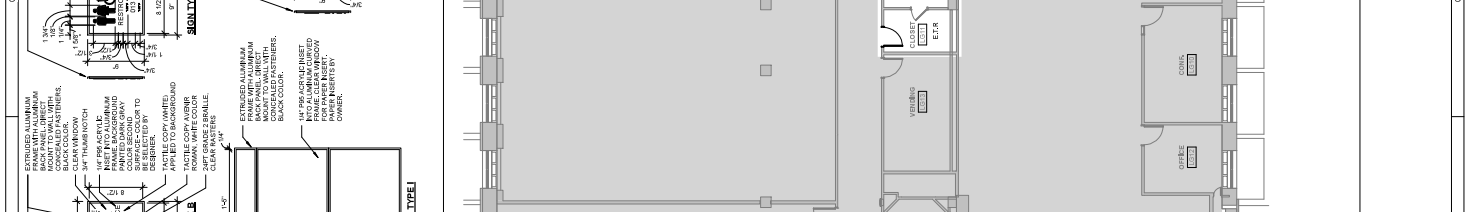
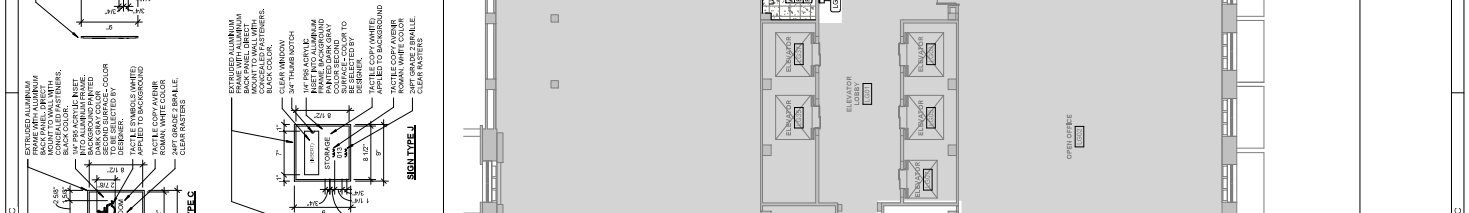
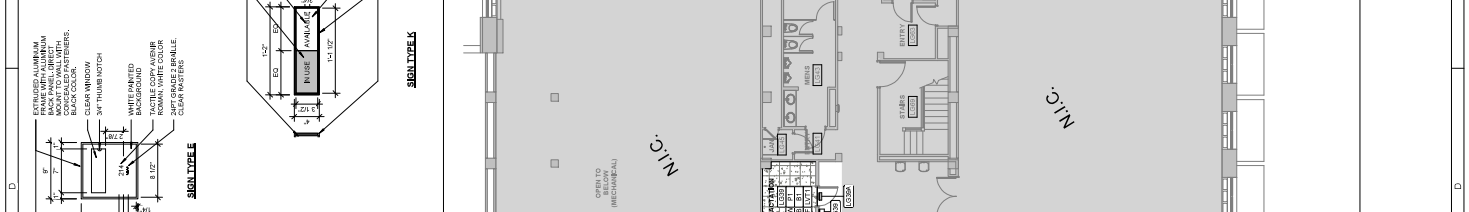
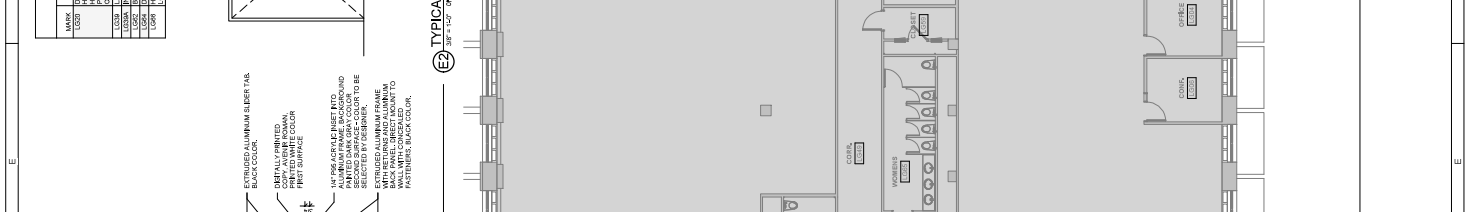
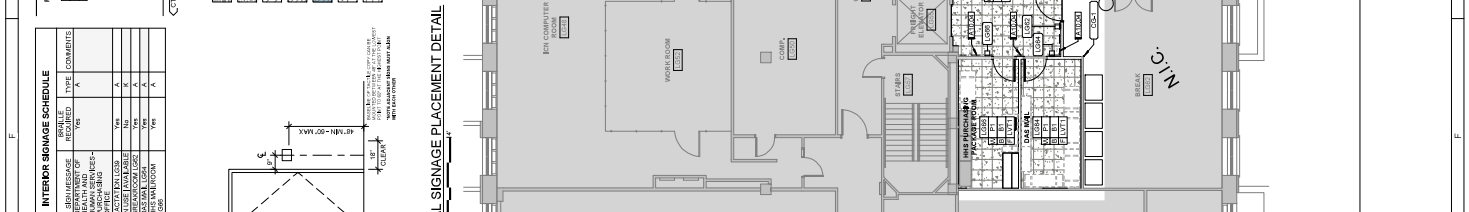
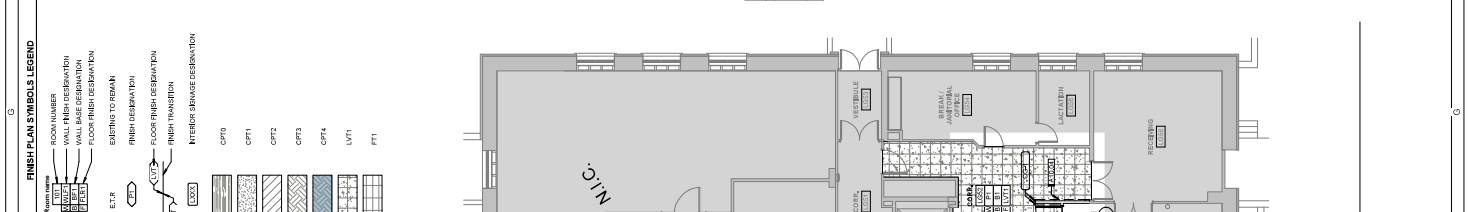
Symbol	Description
○	CEILING MATERIAL DEMONSTRATION
○	CEILING REHEAT
○	ACCOUNT FINISH DEMONSTRATION
○	EXISTING CORONADO CEILING SYSTEM TO REMAIN - PART PL UNO
○	NEW CORONADO CEILING SYSTEM - PART PL UNO
○	ACQUANT CEILING PANEL SYSTEM - SEE MATTER # 1111 UNO
○	SURFACE LIGHT
○	RECESSED LIGHT
○	SURFACE LIGHT
○	SUSPENDED OR PENDANT LIGHT
○	RECESSED LIGHT
○	STAB LIGHT
○	CORE LIGHT
○	EXIT SIGN
○	ACCESS PANEL
○	RETURN AIR GRILLE
○	SUPPLY AIR DIFFUSER
○	EXHAUST AIR GRILLE
○	SPEAKER
○	SMOKE DETECTOR

KEYNOTES

NO.	ALIAS	NOTE
001	001	SEE MATTER # 1111 UNO
002	002	SEE MATTER # 1111 UNO
003	003	SEE MATTER # 1111 UNO
004	004	SEE MATTER # 1111 UNO



MARK	DESCRIPTION	REQUIRED	TYPE	COMMENTS
100	EXTRUDED ALUMINUM FRAME WITH ALUMINUM BACK PANEL, MOUNT TO WALL WITH CONCEALED FASTENERS, BLACK COLOR.	Yes	A	
101	EXTRUDED ALUMINUM FRAME WITH ALUMINUM BACK PANEL, MOUNT TO WALL WITH CONCEALED FASTENERS, WHITE COLOR.	Yes	A	
102	EXTRUDED ALUMINUM FRAME WITH ALUMINUM BACK PANEL, MOUNT TO WALL WITH CONCEALED FASTENERS, CLEAR MATTER.	Yes	A	
103	EXTRUDED ALUMINUM FRAME WITH ALUMINUM BACK PANEL, MOUNT TO WALL WITH CONCEALED FASTENERS, CLEAR MATTER.	Yes	A	
104	EXTRUDED ALUMINUM FRAME WITH ALUMINUM BACK PANEL, MOUNT TO WALL WITH CONCEALED FASTENERS, CLEAR MATTER.	Yes	A	
105	EXTRUDED ALUMINUM FRAME WITH ALUMINUM BACK PANEL, MOUNT TO WALL WITH CONCEALED FASTENERS, CLEAR MATTER.	Yes	A	
106	EXTRUDED ALUMINUM FRAME WITH ALUMINUM BACK PANEL, MOUNT TO WALL WITH CONCEALED FASTENERS, CLEAR MATTER.	Yes	A	
107	EXTRUDED ALUMINUM FRAME WITH ALUMINUM BACK PANEL, MOUNT TO WALL WITH CONCEALED FASTENERS, CLEAR MATTER.	Yes	A	
108	EXTRUDED ALUMINUM FRAME WITH ALUMINUM BACK PANEL, MOUNT TO WALL WITH CONCEALED FASTENERS, CLEAR MATTER.	Yes	A	
109	EXTRUDED ALUMINUM FRAME WITH ALUMINUM BACK PANEL, MOUNT TO WALL WITH CONCEALED FASTENERS, CLEAR MATTER.	Yes	A	
110	EXTRUDED ALUMINUM FRAME WITH ALUMINUM BACK PANEL, MOUNT TO WALL WITH CONCEALED FASTENERS, CLEAR MATTER.	Yes	A	
111	EXTRUDED ALUMINUM FRAME WITH ALUMINUM BACK PANEL, MOUNT TO WALL WITH CONCEALED FASTENERS, CLEAR MATTER.	Yes	A	
112	EXTRUDED ALUMINUM FRAME WITH ALUMINUM BACK PANEL, MOUNT TO WALL WITH CONCEALED FASTENERS, CLEAR MATTER.	Yes	A	
113	EXTRUDED ALUMINUM FRAME WITH ALUMINUM BACK PANEL, MOUNT TO WALL WITH CONCEALED FASTENERS, CLEAR MATTER.	Yes	A	
114	EXTRUDED ALUMINUM FRAME WITH ALUMINUM BACK PANEL, MOUNT TO WALL WITH CONCEALED FASTENERS, CLEAR MATTER.	Yes	A	
115	EXTRUDED ALUMINUM FRAME WITH ALUMINUM BACK PANEL, MOUNT TO WALL WITH CONCEALED FASTENERS, CLEAR MATTER.	Yes	A	
116	EXTRUDED ALUMINUM FRAME WITH ALUMINUM BACK PANEL, MOUNT TO WALL WITH CONCEALED FASTENERS, CLEAR MATTER.	Yes	A	
117	EXTRUDED ALUMINUM FRAME WITH ALUMINUM BACK PANEL, MOUNT TO WALL WITH CONCEALED FASTENERS, CLEAR MATTER.	Yes	A	
118	EXTRUDED ALUMINUM FRAME WITH ALUMINUM BACK PANEL, MOUNT TO WALL WITH CONCEALED FASTENERS, CLEAR MATTER.	Yes	A	
119	EXTRUDED ALUMINUM FRAME WITH ALUMINUM BACK PANEL, MOUNT TO WALL WITH CONCEALED FASTENERS, CLEAR MATTER.	Yes	A	
120	EXTRUDED ALUMINUM FRAME WITH ALUMINUM BACK PANEL, MOUNT TO WALL WITH CONCEALED FASTENERS, CLEAR MATTER.	Yes	A	



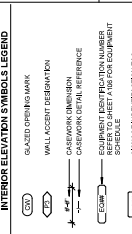
- FINISHES NOTES**
1. FINISHES TO BE USED TO RECEIVE FINISHES ARE SHOWN IN THE FINISH SCHEDULE. FINISHES TO BE USED TO RECEIVE FINISHES SHALL BE INSTALLED WITH AN APPROPRIATE COORDINATION WITH THE FINISHES TO BE RECEIVED. FINISHES TO BE RECEIVED SHALL BE INSTALLED WITH AN APPROPRIATE COORDINATION WITH THE FINISHES TO BE RECEIVED. FINISHES TO BE RECEIVED SHALL BE INSTALLED WITH AN APPROPRIATE COORDINATION WITH THE FINISHES TO BE RECEIVED.
 2. FINISHES TO BE USED TO RECEIVE FINISHES SHALL BE INSTALLED WITH AN APPROPRIATE COORDINATION WITH THE FINISHES TO BE RECEIVED. FINISHES TO BE RECEIVED SHALL BE INSTALLED WITH AN APPROPRIATE COORDINATION WITH THE FINISHES TO BE RECEIVED.
 3. PREPARE SUBFLOOR AS NECESSARY FOR APPLICATION OF FINISHES TO BE RECEIVED. FINISHES TO BE RECEIVED SHALL BE INSTALLED WITH AN APPROPRIATE COORDINATION WITH THE FINISHES TO BE RECEIVED.
 4. FINISHES TO BE USED TO RECEIVE FINISHES SHALL BE INSTALLED WITH AN APPROPRIATE COORDINATION WITH THE FINISHES TO BE RECEIVED. FINISHES TO BE RECEIVED SHALL BE INSTALLED WITH AN APPROPRIATE COORDINATION WITH THE FINISHES TO BE RECEIVED.
 5. FINISHES TO BE USED TO RECEIVE FINISHES SHALL BE INSTALLED WITH AN APPROPRIATE COORDINATION WITH THE FINISHES TO BE RECEIVED. FINISHES TO BE RECEIVED SHALL BE INSTALLED WITH AN APPROPRIATE COORDINATION WITH THE FINISHES TO BE RECEIVED.
 6. FINISHES TO BE USED TO RECEIVE FINISHES SHALL BE INSTALLED WITH AN APPROPRIATE COORDINATION WITH THE FINISHES TO BE RECEIVED. FINISHES TO BE RECEIVED SHALL BE INSTALLED WITH AN APPROPRIATE COORDINATION WITH THE FINISHES TO BE RECEIVED.
 7. FINISHES TO BE USED TO RECEIVE FINISHES SHALL BE INSTALLED WITH AN APPROPRIATE COORDINATION WITH THE FINISHES TO BE RECEIVED. FINISHES TO BE RECEIVED SHALL BE INSTALLED WITH AN APPROPRIATE COORDINATION WITH THE FINISHES TO BE RECEIVED.
 8. FINISHES TO BE USED TO RECEIVE FINISHES SHALL BE INSTALLED WITH AN APPROPRIATE COORDINATION WITH THE FINISHES TO BE RECEIVED. FINISHES TO BE RECEIVED SHALL BE INSTALLED WITH AN APPROPRIATE COORDINATION WITH THE FINISHES TO BE RECEIVED.
 9. FINISHES TO BE USED TO RECEIVE FINISHES SHALL BE INSTALLED WITH AN APPROPRIATE COORDINATION WITH THE FINISHES TO BE RECEIVED. FINISHES TO BE RECEIVED SHALL BE INSTALLED WITH AN APPROPRIATE COORDINATION WITH THE FINISHES TO BE RECEIVED.
 10. FINISHES TO BE USED TO RECEIVE FINISHES SHALL BE INSTALLED WITH AN APPROPRIATE COORDINATION WITH THE FINISHES TO BE RECEIVED. FINISHES TO BE RECEIVED SHALL BE INSTALLED WITH AN APPROPRIATE COORDINATION WITH THE FINISHES TO BE RECEIVED.

- INTERIOR ELEVATION SYMBOLS & LEGEND**
- GLAZED OPENING MARK
 - WALL ACCENT DESCRIPTION
 - CASEWORK/INSTRUMENT CASEWORK/GENERAL REFERENCE
 - BASE CABINET W/ COUNTERTOP
 - WALL MOUNTED CABINET
 - BASE CABINET W/ COUNTERTOP

11. ALL FINISH MATERIALS TO BE FINISHES TO BE RECEIVED.
12. ALL INTERIOR METAL FRAMES SHALL BE FINISHES TO BE RECEIVED.
13. ALL INTERIOR METAL FRAMES SHALL BE FINISHES TO BE RECEIVED.
14. ALL INTERIOR METAL FRAMES SHALL BE FINISHES TO BE RECEIVED.
15. FOR INSTALLATION OF ALL CORNER GUARD AND WALL CORNER AND ALL OTHER FINISHES TO BE RECEIVED WHERE OTHER FINISHES TO BE RECEIVED. FINISHES TO BE RECEIVED SHALL BE INSTALLED WITH AN APPROPRIATE COORDINATION WITH THE FINISHES TO BE RECEIVED.
16. FINISHES TO BE USED TO RECEIVE FINISHES SHALL BE INSTALLED WITH AN APPROPRIATE COORDINATION WITH THE FINISHES TO BE RECEIVED. FINISHES TO BE RECEIVED SHALL BE INSTALLED WITH AN APPROPRIATE COORDINATION WITH THE FINISHES TO BE RECEIVED.
17. FINISHES TO BE USED TO RECEIVE FINISHES SHALL BE INSTALLED WITH AN APPROPRIATE COORDINATION WITH THE FINISHES TO BE RECEIVED. FINISHES TO BE RECEIVED SHALL BE INSTALLED WITH AN APPROPRIATE COORDINATION WITH THE FINISHES TO BE RECEIVED.
18. FINISHES TO BE USED TO RECEIVE FINISHES SHALL BE INSTALLED WITH AN APPROPRIATE COORDINATION WITH THE FINISHES TO BE RECEIVED. FINISHES TO BE RECEIVED SHALL BE INSTALLED WITH AN APPROPRIATE COORDINATION WITH THE FINISHES TO BE RECEIVED.
19. FINISHES TO BE USED TO RECEIVE FINISHES SHALL BE INSTALLED WITH AN APPROPRIATE COORDINATION WITH THE FINISHES TO BE RECEIVED. FINISHES TO BE RECEIVED SHALL BE INSTALLED WITH AN APPROPRIATE COORDINATION WITH THE FINISHES TO BE RECEIVED.
20. FINISHES TO BE USED TO RECEIVE FINISHES SHALL BE INSTALLED WITH AN APPROPRIATE COORDINATION WITH THE FINISHES TO BE RECEIVED. FINISHES TO BE RECEIVED SHALL BE INSTALLED WITH AN APPROPRIATE COORDINATION WITH THE FINISHES TO BE RECEIVED.



L542 CONFERENCE - EAST
1/8" = 1'-0" 0'-0" 10'-0" 10'-0"



L519 PRINT - SOUTH
1/8" = 1'-0" 0'-0" 10'-0" 10'-0"



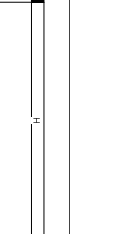
L511 PANTRY - WEST
1/8" = 1'-0" 0'-0" 10'-0" 10'-0"



L557 PRINT - WEST
1/8" = 1'-0" 0'-0" 10'-0" 10'-0"



L543 PANTRY - EAST
1/8" = 1'-0" 0'-0" 10'-0" 10'-0"



L544 CONFERENCE - EAST
1/8" = 1'-0" 0'-0" 10'-0" 10'-0"

L504 / L506 CONFERENCE - SOUTH
1/8" = 1'-0" 0'-0" 10'-0" 10'-0"

L512 TEAM ROOM - EAST
1/8" = 1'-0" 0'-0" 10'-0" 10'-0"

L518 TEAM ROOM - WEST
1/8" = 1'-0" 0'-0" 10'-0" 10'-0"

L519 PRINT - SOUTH
1/8" = 1'-0" 0'-0" 10'-0" 10'-0"

L511 PANTRY - WEST
1/8" = 1'-0" 0'-0" 10'-0" 10'-0"

L557 PRINT - WEST
1/8" = 1'-0" 0'-0" 10'-0" 10'-0"

L543 PANTRY - EAST
1/8" = 1'-0" 0'-0" 10'-0" 10'-0"

L544 CONFERENCE - EAST
1/8" = 1'-0" 0'-0" 10'-0" 10'-0"

L504 / L506 CONFERENCE - SOUTH
1/8" = 1'-0" 0'-0" 10'-0" 10'-0"

L512 TEAM ROOM - EAST
1/8" = 1'-0" 0'-0" 10'-0" 10'-0"

L518 TEAM ROOM - WEST
1/8" = 1'-0" 0'-0" 10'-0" 10'-0"

L519 PRINT - SOUTH
1/8" = 1'-0" 0'-0" 10'-0" 10'-0"

L511 PANTRY - WEST
1/8" = 1'-0" 0'-0" 10'-0" 10'-0"

L557 PRINT - WEST
1/8" = 1'-0" 0'-0" 10'-0" 10'-0"

L543 PANTRY - EAST
1/8" = 1'-0" 0'-0" 10'-0" 10'-0"

L544 CONFERENCE - EAST
1/8" = 1'-0" 0'-0" 10'-0" 10'-0"

L504 / L506 CONFERENCE - SOUTH
1/8" = 1'-0" 0'-0" 10'-0" 10'-0"

L512 TEAM ROOM - EAST
1/8" = 1'-0" 0'-0" 10'-0" 10'-0"

L518 TEAM ROOM - WEST
1/8" = 1'-0" 0'-0" 10'-0" 10'-0"

L519 PRINT - SOUTH
1/8" = 1'-0" 0'-0" 10'-0" 10'-0"

L511 PANTRY - WEST
1/8" = 1'-0" 0'-0" 10'-0" 10'-0"

L557 PRINT - WEST
1/8" = 1'-0" 0'-0" 10'-0" 10'-0"

L543 PANTRY - EAST
1/8" = 1'-0" 0'-0" 10'-0" 10'-0"

L544 CONFERENCE - EAST
1/8" = 1'-0" 0'-0" 10'-0" 10'-0"

L504 / L506 CONFERENCE - SOUTH
1/8" = 1'-0" 0'-0" 10'-0" 10'-0"

L512 TEAM ROOM - EAST
1/8" = 1'-0" 0'-0" 10'-0" 10'-0"

L518 TEAM ROOM - WEST
1/8" = 1'-0" 0'-0" 10'-0" 10'-0"

L519 PRINT - SOUTH
1/8" = 1'-0" 0'-0" 10'-0" 10'-0"

L511 PANTRY - WEST
1/8" = 1'-0" 0'-0" 10'-0" 10'-0"

L557 PRINT - WEST
1/8" = 1'-0" 0'-0" 10'-0" 10'-0"

L543 PANTRY - EAST
1/8" = 1'-0" 0'-0" 10'-0" 10'-0"

L544 CONFERENCE - EAST
1/8" = 1'-0" 0'-0" 10'-0" 10'-0"

L504 / L506 CONFERENCE - SOUTH
1/8" = 1'-0" 0'-0" 10'-0" 10'-0"

L512 TEAM ROOM - EAST
1/8" = 1'-0" 0'-0" 10'-0" 10'-0"

L518 TEAM ROOM - WEST
1/8" = 1'-0" 0'-0" 10'-0" 10'-0"

L519 PRINT - SOUTH
1/8" = 1'-0" 0'-0" 10'-0" 10'-0"

L511 PANTRY - WEST
1/8" = 1'-0" 0'-0" 10'-0" 10'-0"

L557 PRINT - WEST
1/8" = 1'-0" 0'-0" 10'-0" 10'-0"

L543 PANTRY - EAST
1/8" = 1'-0" 0'-0" 10'-0" 10'-0"

L544 CONFERENCE - EAST
1/8" = 1'-0" 0'-0" 10'-0" 10'-0"

L504 / L506 CONFERENCE - SOUTH
1/8" = 1'-0" 0'-0" 10'-0" 10'-0"

L512 TEAM ROOM - EAST
1/8" = 1'-0" 0'-0" 10'-0" 10'-0"

L518 TEAM ROOM - WEST
1/8" = 1'-0" 0'-0" 10'-0" 10'-0"

L519 PRINT - SOUTH
1/8" = 1'-0" 0'-0" 10'-0" 10'-0"

L511 PANTRY - WEST
1/8" = 1'-0" 0'-0" 10'-0" 10'-0"

L557 PRINT - WEST
1/8" = 1'-0" 0'-0" 10'-0" 10'-0"

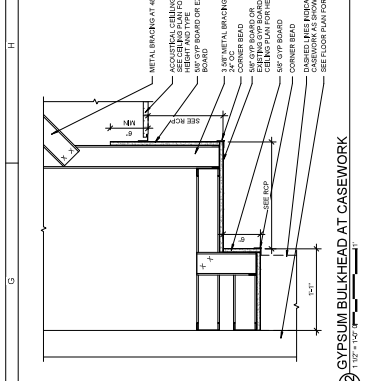
L543 PANTRY - EAST
1/8" = 1'-0" 0'-0" 10'-0" 10'-0"

L544 CONFERENCE - EAST
1/8" = 1'-0" 0'-0" 10'-0" 10'-0"

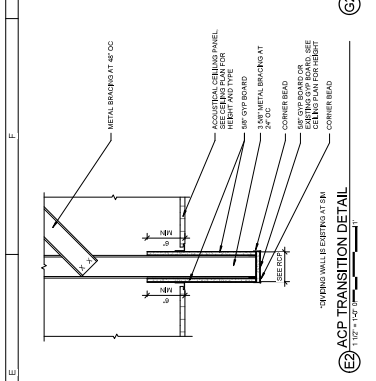
L504 / L506 CONFERENCE - SOUTH
1/8" = 1'-0" 0'-0" 10'-0" 10'-0"

L512 TEAM ROOM - EAST
1/8" = 1'-0" 0'-0" 10'-0" 10'-0"

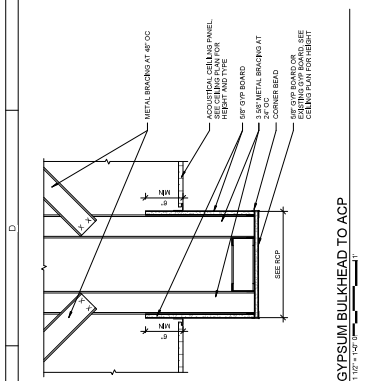
L518 TEAM ROOM - WEST
1/8" = 1'-0" 0'-0" 10'-0" 10'-0"



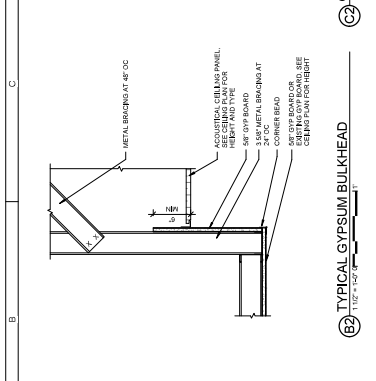
C2 TYPICAL GYPSUM BULKHEAD TO ACP
1'-0\"/>



C3 GYPSUM BULKHEAD AT CASEWORK
1'-0\"/>



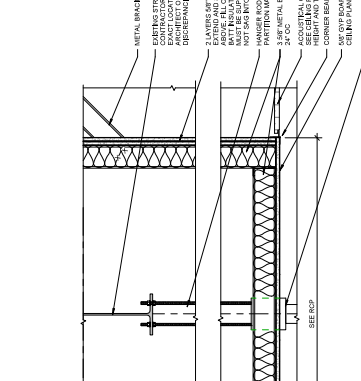
C4 GYPSUM BULKHEAD AT OPERABLE PARTITION - ALT #3
1'-0\"/>



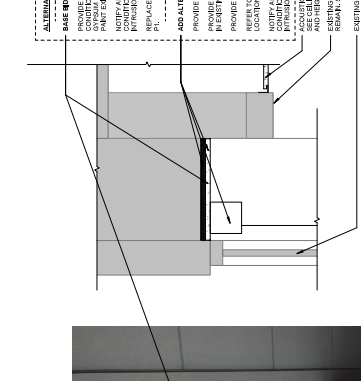
C5 GYPSUM BULKHEAD AT OPERABLE PARTITION - ALT #4
1'-0\"/>



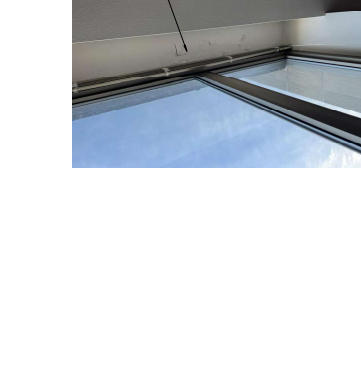
C6 WINDOW SILL RADIATOR DETAIL
1'-0\"/>



C7 WINDOW SILL RADIATOR DETAIL
1'-0\"/>



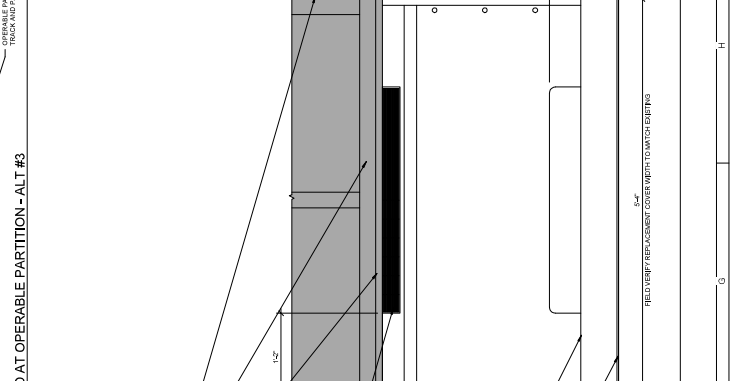
C8 WINDOW SILL RADIATOR DETAIL
1'-0\"/>



C9 WINDOW SILL RADIATOR DETAIL
1'-0\"/>



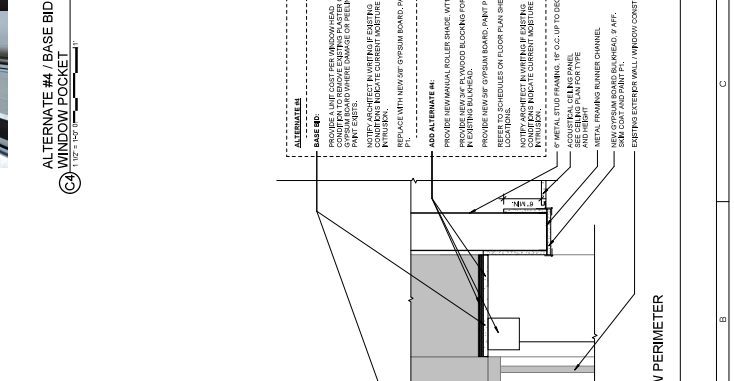
C10 WINDOW SILL RADIATOR DETAIL
1'-0\"/>



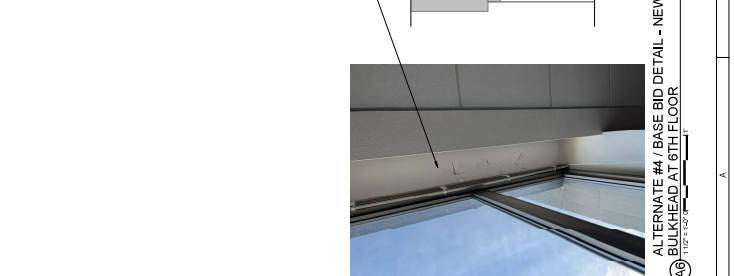
C11 WINDOW SILL RADIATOR DETAIL
1'-0\"/>



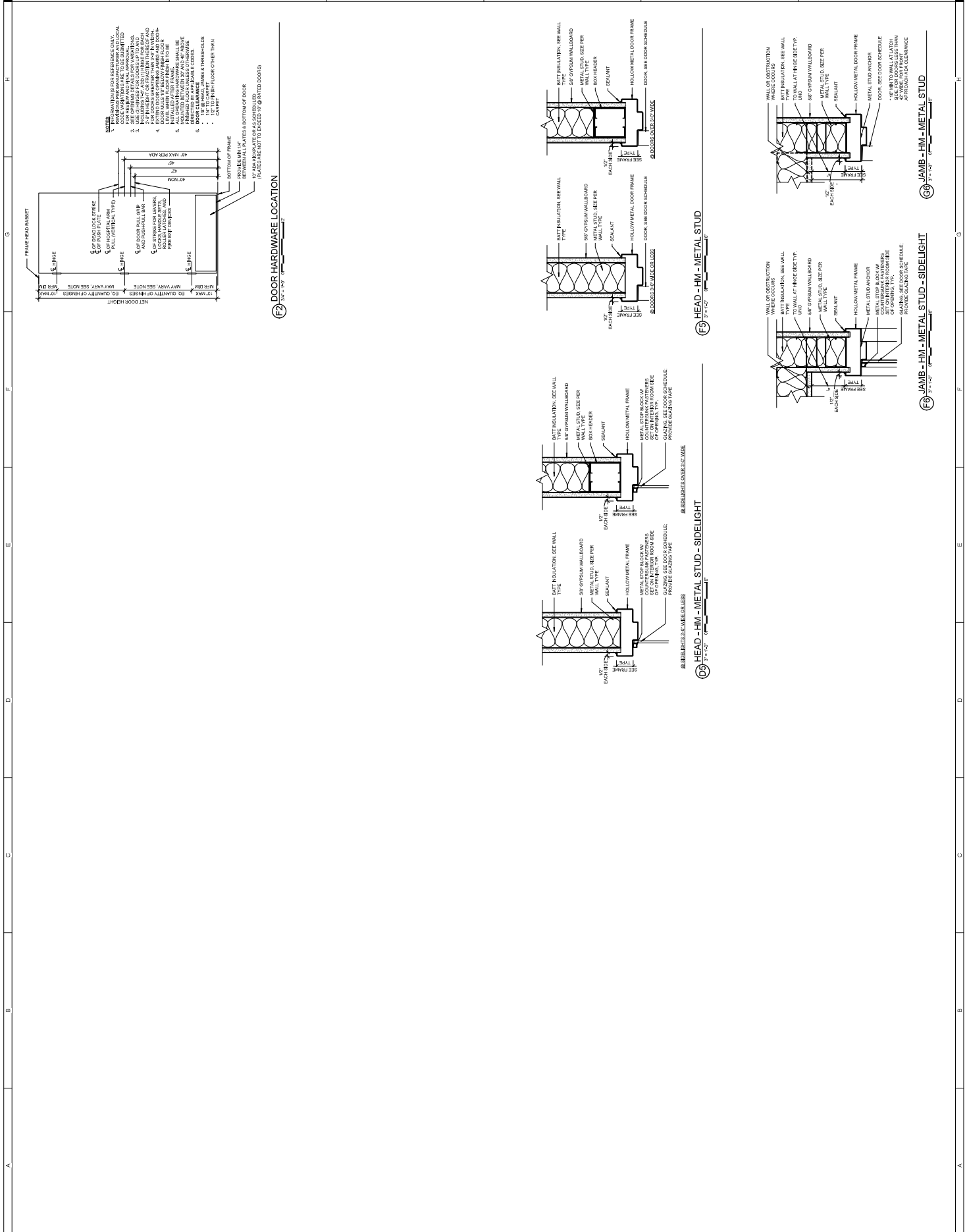
C12 WINDOW SILL RADIATOR DETAIL
1'-0\"/>



C13 WINDOW SILL RADIATOR DETAIL
1'-0\"/>



C14 WINDOW SILL RADIATOR DETAIL
1'-0\"/>



- NOTES:**
1. INFORMATION FOR REFERENCE ONLY. ALL CONSTRUCTION SHALL BE IN ACCORDANCE WITH THE IOWA BUILDING CODE. MATERIALS TO BE SUBMITTED FOR APPROVAL TO THE IOWA BUILDING CODE OFFICE.
 2. SEE DRAWINGS FOR ALL DIMENSIONS. DIMENSIONS ARE TO FACE UNLESS NOTED OTHERWISE.
 3. SEE DRAWINGS FOR ALL DIMENSIONS. DIMENSIONS ARE TO FACE UNLESS NOTED OTHERWISE.
 4. DOOR SHALL BE 1-1/2" MIN TO WALL AT LATCH AND 1-1/2" MIN TO WALL AT LATCH AND 1-1/2" MIN TO WALL AT LATCH AND 1-1/2" MIN TO WALL AT LATCH.
 5. DOOR SHALL BE 1-1/2" MIN TO WALL AT LATCH AND 1-1/2" MIN TO WALL AT LATCH AND 1-1/2" MIN TO WALL AT LATCH AND 1-1/2" MIN TO WALL AT LATCH.
 6. DOOR SHALL BE 1-1/2" MIN TO WALL AT LATCH AND 1-1/2" MIN TO WALL AT LATCH AND 1-1/2" MIN TO WALL AT LATCH AND 1-1/2" MIN TO WALL AT LATCH.
 7. DOOR SHALL BE 1-1/2" MIN TO WALL AT LATCH AND 1-1/2" MIN TO WALL AT LATCH AND 1-1/2" MIN TO WALL AT LATCH AND 1-1/2" MIN TO WALL AT LATCH.
 8. DOOR SHALL BE 1-1/2" MIN TO WALL AT LATCH AND 1-1/2" MIN TO WALL AT LATCH AND 1-1/2" MIN TO WALL AT LATCH AND 1-1/2" MIN TO WALL AT LATCH.
 9. DOOR SHALL BE 1-1/2" MIN TO WALL AT LATCH AND 1-1/2" MIN TO WALL AT LATCH AND 1-1/2" MIN TO WALL AT LATCH AND 1-1/2" MIN TO WALL AT LATCH.
 10. DOOR SHALL BE 1-1/2" MIN TO WALL AT LATCH AND 1-1/2" MIN TO WALL AT LATCH AND 1-1/2" MIN TO WALL AT LATCH AND 1-1/2" MIN TO WALL AT LATCH.

F2 DOOR HARDWARE LOCATION

F5 HEAD - HM - METAL STUD

F6 HEAD - HM - METAL STUD - SIDELIGHT

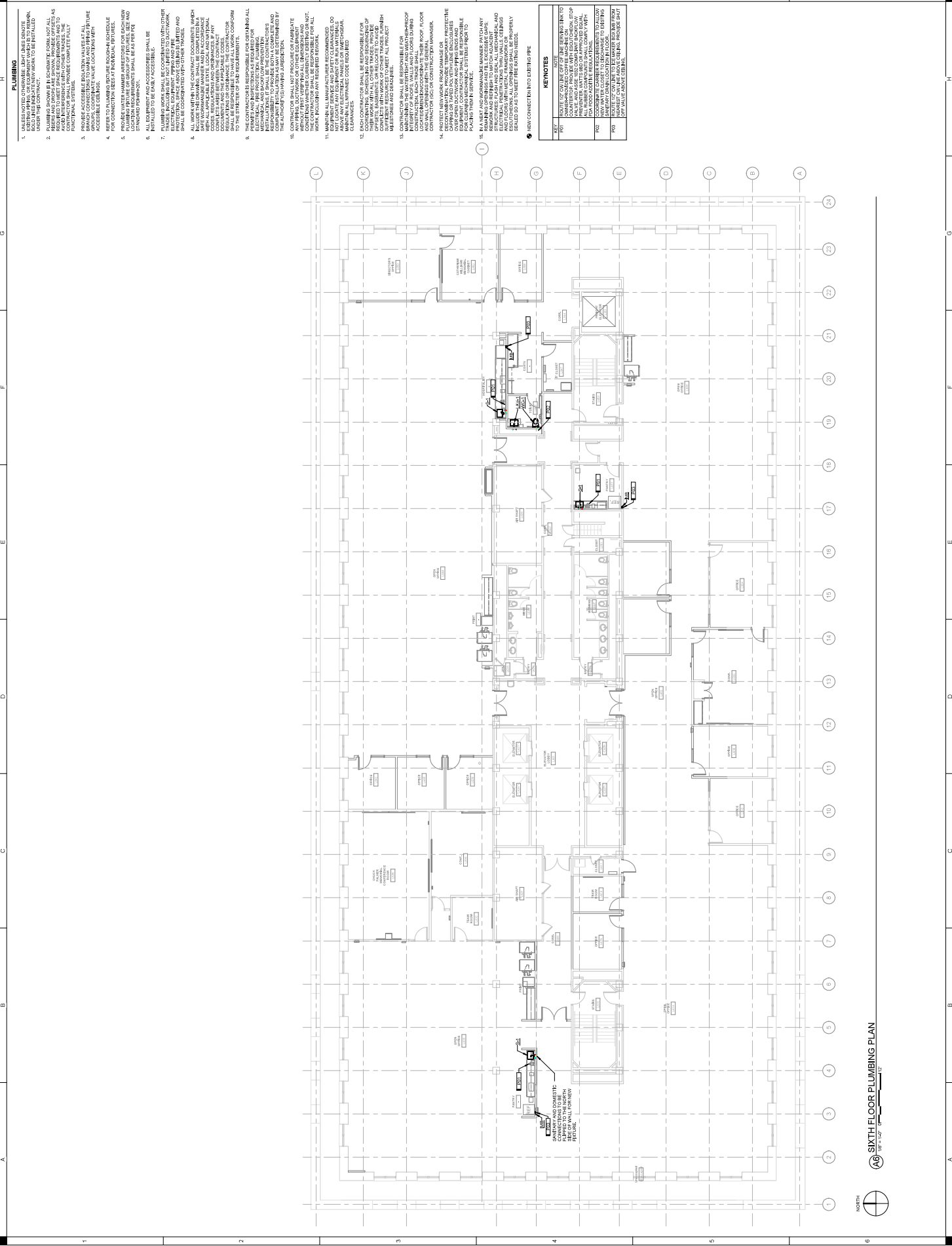
F9 JAMB - HM - METAL STUD - SIDELIGHT

F8 JAMB - HM - METAL STUD

APPROVED BY	ISSUE NO.
REVIEW FOR CONSTRUCTION DOCUMENTS	ISSUE DATE
PROJECT NUMBER	PROJECT NAME
FIELD BOOK	FIELD BOOK

IOWA DEPARTMENT OF HEALTH & HUMAN SERVICES #9186.01
 IOWA DEPARTMENT OF ADMINISTRATIVE SERVICES
 CLIENT BUILDING 1301 E 17TH STREET IOWA MONIES 1A 50319

SHIVE-HATTERY ARCHITECTURE-ENGINEERING
 425 WEST MONROE AVE. SUITE 100
 DES MOINES, IA 50319



1. UNLESS NOTED OTHERWISE, LIGHT LINES SHOWN ON THIS PLAN ARE TO BE INSTALLED UNDER THIS CONTRACT.
2. ALL WORK SHALL BE DONE IN ACCORDANCE WITH ALL APPLICABLE CODES AND REGULATIONS. TRADES SHALL BE RESPONSIBLE FOR OBTAINING ALL NECESSARY PERMITS AND APPROVALS FROM THE APPROPRIATE AGENCIES.
3. PROVIDE ACCESSIBLE ROUGH-IN VALUES AT ALL APPROXIMATE LOCATIONS FOR ALL TOILETS, SINKS, AND SHOWERS. PROVIDE ACCESSIBLE ROUGH-IN VALUES FOR CONNECTIONS TO INDIVIDUAL FIXTURES.
4. REFER TO PLUMBING REQUIREMENTS SCHEDULE FOR CONNECTIONS TO INDIVIDUAL FIXTURES.
5. PROVIDE THE NECESSARY SLOPE AND DRAINAGE FOR ALL PLUMBING SYSTEMS. PROVIDE SLOPE INDICATORS AS PER THE STANDARDS FOR SLOPE.
6. ALL EQUIPMENT AND ACCESSORIES SHALL BE INSTALLED TO BE EASILY ACCESSIBLE.
7. TRADES INCLUDING BUT NOT LIMITED TO PLUMBING, MECHANICAL, AND ELECTRICAL SHALL BE RESPONSIBLE FOR OBTAINING ALL NECESSARY PERMITS AND APPROVALS FROM THE APPROPRIATE AGENCIES.
8. ALL WORK WITHIN THE CONTRACT DOCUMENTS WHICH INCLUDE THIS DRAWING SHALL BE COVERED BY A WRITTEN WARRANTY. THE WARRANTY SHALL BE IN ACCORDANCE WITH THE IOWA CONSUMER CODE AND ALL APPLICABLE STATE, FEDERAL, AND NATIONAL REGULATIONS AND STANDARDS. THE CONTRACTOR SHALL BE RESPONSIBLE TO HAVE ALL WORK CONFORM TO THE SPECIFICATIONS AND REQUIREMENTS.
9. THE CONTRACTOR SHALL BE RESPONSIBLE FOR OBTAINING ALL NECESSARY PERMITS AND APPROVALS FROM THE APPROPRIATE AGENCIES. THE CONTRACTOR SHALL BE RESPONSIBLE FOR OBTAINING ALL NECESSARY PERMITS AND APPROVALS FROM THE APPROPRIATE AGENCIES.
10. CONTRACTOR SHALL NOT REMOVE OR DAMAGE EXISTING WORK OR MATERIALS UNLESS NECESSARY FOR THE WORK. CONTRACTOR SHALL BE RESPONSIBLE FOR PROTECTING ALL EXISTING WORK AND MATERIALS. CONTRACTOR SHALL BE RESPONSIBLE FOR OBTAINING ALL NECESSARY PERMITS AND APPROVALS FROM THE APPROPRIATE AGENCIES.
11. MATERIALS AND METHODS SHALL BE APPROVED BY THE ARCHITECT PRIOR TO INSTALLATION. CONTRACTOR SHALL BE RESPONSIBLE FOR OBTAINING ALL NECESSARY PERMITS AND APPROVALS FROM THE APPROPRIATE AGENCIES.
12. CONTRACTOR SHALL BE RESPONSIBLE FOR OBTAINING ALL NECESSARY PERMITS AND APPROVALS FROM THE APPROPRIATE AGENCIES. CONTRACTOR SHALL BE RESPONSIBLE FOR OBTAINING ALL NECESSARY PERMITS AND APPROVALS FROM THE APPROPRIATE AGENCIES.
13. CONTRACTOR SHALL BE RESPONSIBLE FOR OBTAINING ALL NECESSARY PERMITS AND APPROVALS FROM THE APPROPRIATE AGENCIES. CONTRACTOR SHALL BE RESPONSIBLE FOR OBTAINING ALL NECESSARY PERMITS AND APPROVALS FROM THE APPROPRIATE AGENCIES.
14. PROTECT EXISTING WORK FROM DAMAGE OR DISAPPEARANCE. CONTRACTOR SHALL BE RESPONSIBLE FOR OBTAINING ALL NECESSARY PERMITS AND APPROVALS FROM THE APPROPRIATE AGENCIES.
15. CONTRACTOR SHALL BE RESPONSIBLE FOR OBTAINING ALL NECESSARY PERMITS AND APPROVALS FROM THE APPROPRIATE AGENCIES. CONTRACTOR SHALL BE RESPONSIBLE FOR OBTAINING ALL NECESSARY PERMITS AND APPROVALS FROM THE APPROPRIATE AGENCIES.
16. CONTRACTOR SHALL BE RESPONSIBLE FOR OBTAINING ALL NECESSARY PERMITS AND APPROVALS FROM THE APPROPRIATE AGENCIES. CONTRACTOR SHALL BE RESPONSIBLE FOR OBTAINING ALL NECESSARY PERMITS AND APPROVALS FROM THE APPROPRIATE AGENCIES.

KEY
 101 UNLESS NOTED OTHERWISE, LIGHT LINES SHOWN ON THIS PLAN ARE TO BE INSTALLED UNDER THIS CONTRACT.
 102 ALL WORK SHALL BE DONE IN ACCORDANCE WITH ALL APPLICABLE CODES AND REGULATIONS. TRADES SHALL BE RESPONSIBLE FOR OBTAINING ALL NECESSARY PERMITS AND APPROVALS FROM THE APPROPRIATE AGENCIES.
 103 PROVIDE ACCESSIBLE ROUGH-IN VALUES AT ALL APPROXIMATE LOCATIONS FOR ALL TOILETS, SINKS, AND SHOWERS. PROVIDE ACCESSIBLE ROUGH-IN VALUES FOR CONNECTIONS TO INDIVIDUAL FIXTURES.
 104 REFER TO PLUMBING REQUIREMENTS SCHEDULE FOR CONNECTIONS TO INDIVIDUAL FIXTURES.
 105 PROVIDE THE NECESSARY SLOPE AND DRAINAGE FOR ALL PLUMBING SYSTEMS. PROVIDE SLOPE INDICATORS AS PER THE STANDARDS FOR SLOPE.
 106 ALL EQUIPMENT AND ACCESSORIES SHALL BE INSTALLED TO BE EASILY ACCESSIBLE.
 107 TRADES INCLUDING BUT NOT LIMITED TO PLUMBING, MECHANICAL, AND ELECTRICAL SHALL BE RESPONSIBLE FOR OBTAINING ALL NECESSARY PERMITS AND APPROVALS FROM THE APPROPRIATE AGENCIES.
 108 ALL WORK WITHIN THE CONTRACT DOCUMENTS WHICH INCLUDE THIS DRAWING SHALL BE COVERED BY A WRITTEN WARRANTY. THE WARRANTY SHALL BE IN ACCORDANCE WITH THE IOWA CONSUMER CODE AND ALL APPLICABLE STATE, FEDERAL, AND NATIONAL REGULATIONS AND STANDARDS. THE CONTRACTOR SHALL BE RESPONSIBLE TO HAVE ALL WORK CONFORM TO THE SPECIFICATIONS AND REQUIREMENTS.
 109 THE CONTRACTOR SHALL BE RESPONSIBLE FOR OBTAINING ALL NECESSARY PERMITS AND APPROVALS FROM THE APPROPRIATE AGENCIES. THE CONTRACTOR SHALL BE RESPONSIBLE FOR OBTAINING ALL NECESSARY PERMITS AND APPROVALS FROM THE APPROPRIATE AGENCIES.
 110 CONTRACTOR SHALL NOT REMOVE OR DAMAGE EXISTING WORK OR MATERIALS UNLESS NECESSARY FOR THE WORK. CONTRACTOR SHALL BE RESPONSIBLE FOR PROTECTING ALL EXISTING WORK AND MATERIALS. CONTRACTOR SHALL BE RESPONSIBLE FOR OBTAINING ALL NECESSARY PERMITS AND APPROVALS FROM THE APPROPRIATE AGENCIES.
 111 MATERIALS AND METHODS SHALL BE APPROVED BY THE ARCHITECT PRIOR TO INSTALLATION. CONTRACTOR SHALL BE RESPONSIBLE FOR OBTAINING ALL NECESSARY PERMITS AND APPROVALS FROM THE APPROPRIATE AGENCIES.
 112 CONTRACTOR SHALL BE RESPONSIBLE FOR OBTAINING ALL NECESSARY PERMITS AND APPROVALS FROM THE APPROPRIATE AGENCIES. CONTRACTOR SHALL BE RESPONSIBLE FOR OBTAINING ALL NECESSARY PERMITS AND APPROVALS FROM THE APPROPRIATE AGENCIES.
 113 CONTRACTOR SHALL BE RESPONSIBLE FOR OBTAINING ALL NECESSARY PERMITS AND APPROVALS FROM THE APPROPRIATE AGENCIES. CONTRACTOR SHALL BE RESPONSIBLE FOR OBTAINING ALL NECESSARY PERMITS AND APPROVALS FROM THE APPROPRIATE AGENCIES.
 114 PROTECT EXISTING WORK FROM DAMAGE OR DISAPPEARANCE. CONTRACTOR SHALL BE RESPONSIBLE FOR OBTAINING ALL NECESSARY PERMITS AND APPROVALS FROM THE APPROPRIATE AGENCIES.
 115 CONTRACTOR SHALL BE RESPONSIBLE FOR OBTAINING ALL NECESSARY PERMITS AND APPROVALS FROM THE APPROPRIATE AGENCIES. CONTRACTOR SHALL BE RESPONSIBLE FOR OBTAINING ALL NECESSARY PERMITS AND APPROVALS FROM THE APPROPRIATE AGENCIES.
 116 CONTRACTOR SHALL BE RESPONSIBLE FOR OBTAINING ALL NECESSARY PERMITS AND APPROVALS FROM THE APPROPRIATE AGENCIES. CONTRACTOR SHALL BE RESPONSIBLE FOR OBTAINING ALL NECESSARY PERMITS AND APPROVALS FROM THE APPROPRIATE AGENCIES.

SIXTH FLOOR PLUMBING PLAN
 SCALE: 1/8" = 1'-0"
 NORTH

