



Friday, July 12, 2019

RFP 20CRDLWBKPOOL-0001 Questions & Answers

Question: Is the mandatory meeting on 10 July considered the letter of intent to bid? Pg 6, 2.6. If not, does an email to Mr. Gulick stating that the contractor intends to bid sufficient?

Answer: Contractors who are present at the mandatory meeting July 10, 2019 will meet the Intent to Bid requirement for this RFP.

Question: Are we going to be in areas where MYSO are probable/likely to be caught?

Answer: The primary focal areas for this project are within the summer range of both MYSO and MYSE in Iowa. To facilitate capture of both species, coordination throughout the project will be used to decide on the use of secondary focal areas (e.g., adjacent counties). Approval to shift to areas outside of primary focal areas will be based on the Contractor's demonstration of probable absence following 2019 Range-Wide Indiana Bat Summer Survey Guidelines. Contractors are encouraged to consider landscape features within the project area when developing work plans as referenced in the RFP. To facilitate work plan development, statewide spatial data (e.g., public lands, aerial photography, LIDAR) are available through Iowa Geodata (<https://geodata.iowa.gov/>) and are available for public use. The DNR will provide ecologically sensitive data not available on at Iowa Geodata to the Contractor to facilitate bat capture.

Question: Is MYLU the next species after MYSE and MYSO to tag as part of the IDNR approved species?

Answer: Yes.

Question: Will coordination throughout project be used to decide when switch to tagging MYLU or other approved species, or is there a set timeframe?

Answer: Coordination throughout the project will be used to decide on the inclusion of MYLU or other approved species in the study. Approval to include other species will be based on the Contractor's demonstration of probable absence following 2019 Range-Wide Indiana Bat Summer Survey Guidelines.

Question: There is no preference for male/female in RFP. Tag all MYSE or MYSO?

Answer: There is no preference for tagging male/female for the target species.

Question: Will all netting be conducted in the same area the whole time, e.g., public lands within Adair, Adams, and Union counties?

Answer: No. Contractors will have permission to conduct surveys on public lands within focal areas. Survey of non-public land is allowed provided the Contractor has prior written approval from the land owner (e.g., if the Contractor would like to conduct surveys on private land, it is the Contractor's responsibility to obtain written approval in advance and the landowner must be informed that the data collected under this project are considered public information). While data for this project collected are considered public, the DNR will protect ecologically sensitive data to the extent allowable.

The primary focal area of the study is Adair, Adams, and Union counties with adjacent counties identified as the secondary focal area. The secondary focal area will be utilized should it be necessary to shift areas to facilitate bat captures. While the focal areas have been described by county, Contractors have the discretion to develop work plans by watershed within the focal area. Watershed data area available at Iowa Geodata (<https://geodata.iowa.gov/>). Mist net surveys to capture bats must occur within the HCP study area. Bats may be tracked outside the HCP study area.

The DNR will provide acoustic and capture data on public lands within the focal and surrounding areas to the Contractor. The FWS and MEC will provide additional bat capture data from private and public lands in the study area to the Contractor.

Question: Can we have access to capture records and acoustic results in these counties (including last fall)?

Answer: Yes. The successful bidder will be provided capture and acoustic reports from telemetry and hibernacula study area and adjacent counties.

Question: Has the habitat model been developed or is that part of the RFP as well?

Answer: A preliminary hibernacula model was developed under the 2017 migration study.

Question: If the model has been developed, how many hibernacula have been or are expected to be identified? Who picks the 6 to monitor?

Answer: The preliminary hibernacula model identifies areas having the potential for hibernacula based on habitat, aspect, slope and elevation. The Contractor will have access to the model output for use in the site selection reconnaissance surveys. Attached are examples of the model output. The general focal areas will be provided by the DNR. Sites will be selected by the Contractor. The data collected here will be used by the DNR to refine the hibernacula model. Other studies not included under this grant may also be used to refine the model in the future (e.g., pilot drone study mentioned in the meeting).

Question: The RFP calls for bi-weekly progress reports for acoustic monitoring. However, detectors only need to be visited monthly, so we suggest a monthly progress report?

Answer: The DNR will take this into consideration.

Question: Of the 6 new sites, would some be hibernacula found during the 2019 migration tracking? Or just the ones identified in the model? Do the characterization needs for hibernacula match what is in model? Can we get those data? Will the contractor use the USFWS monitoring sheet for cave and mines?

Answer: DNR will take into consideration monitoring at new hibernacula located during migration tracking. However, the six new sites will be based on the preliminary hibernacula model. The data collected by the Contractor describing potential hibernacula sites will be used by the DNR to refine the model therefore characterization needs to include modeled features (e.g., slope, aspect and elevation). In addition, Contractors should assess and describe the sites following the 2019 Range-Wide Indiana Bat Summer Survey Guidelines and include additional features MYSE are known to use in Iowa (e.g., talus slopes). Data will be made available to the Contractor. Because this information will be used to refine the model, the Contractor will characterize all sites reviewed during site selection reconnaissance surveys not only the six sites selected to monitor.

Question: Regarding Task 1a are the six tracked bats part of the 20 minimum or in addition to? Also, do the 6 tracked bats have to be tracked to 6 different Hibernacula sites?

Answer: Yes, the six tracked bats are part of the 20 minimum. No, the bats will be tracked through migration which may or may not conclude at six different hibernacula sites.

Question: Regarding Task 2a what evidence is available that MYSE or MYSO are in the 2 known sites the DNR wants monitored for up to a year? What information is available on known caves on public or private land? Does the 2017 Hibernacula model include caves? Is there any Lidar data available?

Answer: There is evidence of MYSE use of the two known sites is based on acoustic surveys. Canine detection dogs (trained on myotis) also alerted at these sites. For one site (Hardin County), there is also visual confirmation of bats flying in and out of a crevice above the canine alert area. The DNR is not aware of any recent confirmed MYSO hibernacula in Iowa. There are historic records from eastern Iowa.

The DNR does not have information on known caves on private land. There is information on known caves on public lands in eastern Iowa (outside of the HCP study area) and one known non-cave hibernacula in Jasper County. This information will be provided to the Contractor.

The 2017 preliminary hibernacula model identified potential area based on landscape features. It is not known if the areas identified include caves. There is LIDAR data are available through Iowa Geodata (<https://geodata.iowa.gov/>).

Question: Regarding Task 2c and the March preliminary report is it just a summary of results or does it need to be in Standard Journal Format?

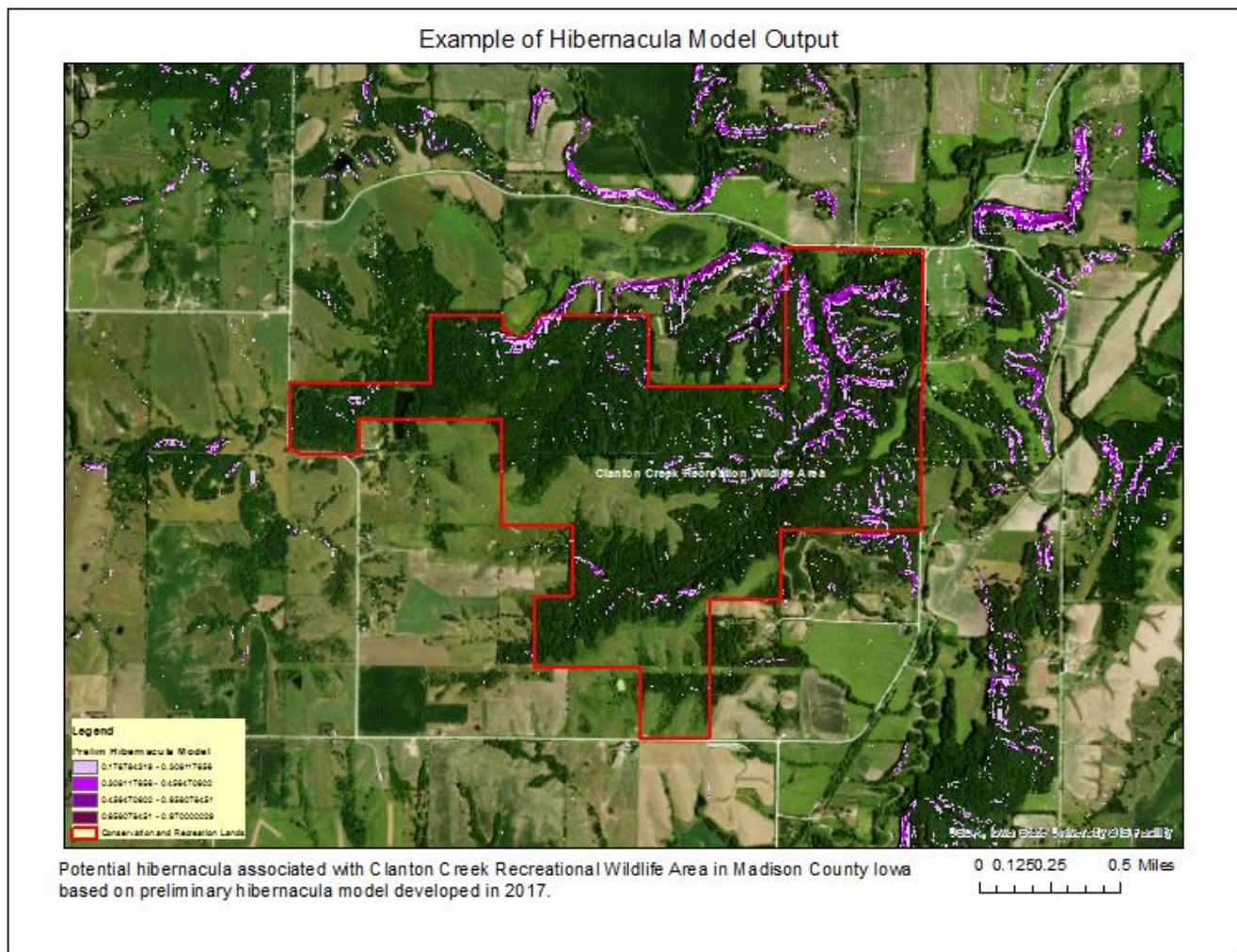
Answer: The final report will be in standard journal format. The preliminary report can be a summary of results.

Question: What is the estimated budget for this RFP?

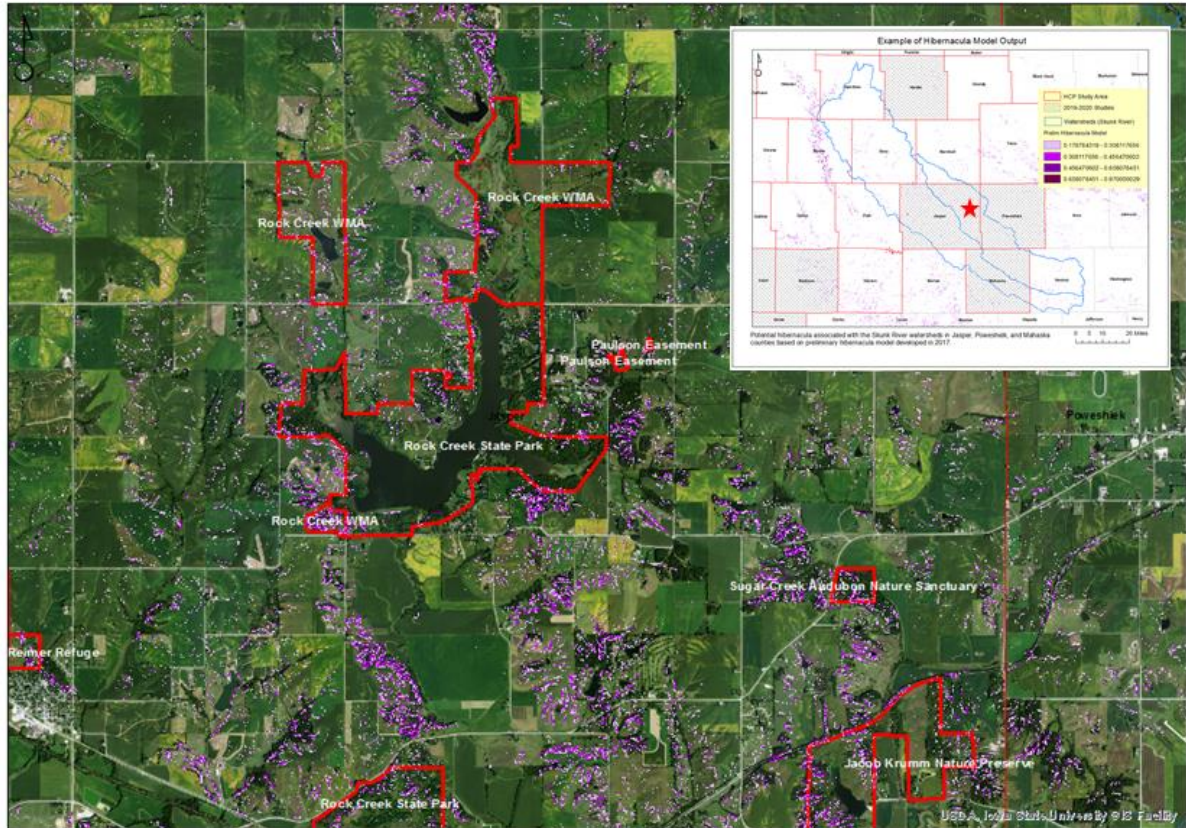
Answer: The estimated budget to complete all task in this RFP is \$400,000 to \$470,000.

Question: Would the DNR be willing to split Task 1 and Task 2 between Contractors so a Contractor could bid on only one task?

Answer: No.



Example of Hibernacula Model Output



Potential hibernacula associated with the Skunk River watersheds in Jasper, Poweshiek, and Mahaska counties based on preliminary hibernacula model developed in 2017.

0 0.3 0.6 1.2 Miles