

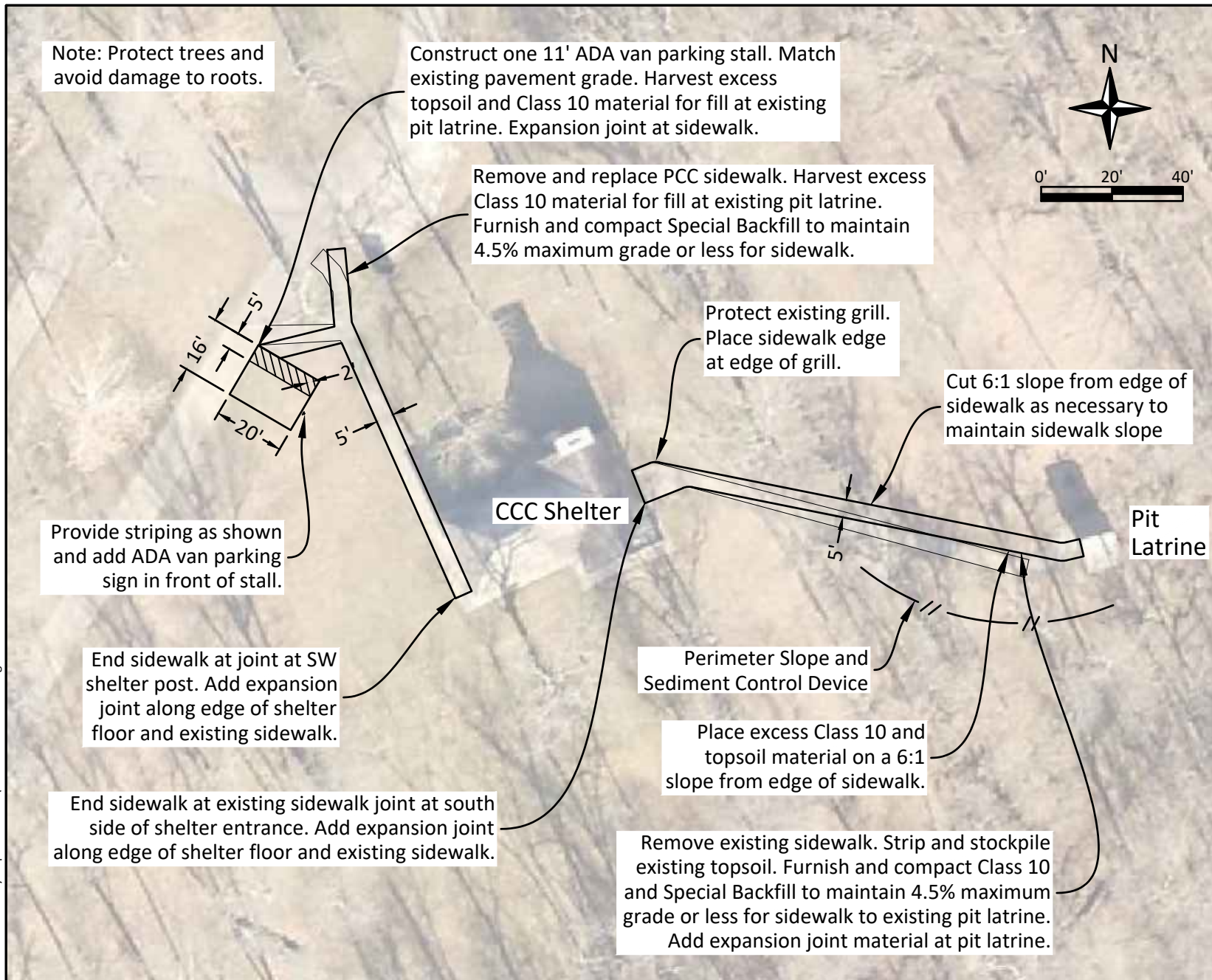
C:\Users\Zach Gunsolley\Desktop\25-04-87-02 Lo3F Accessibility Improvements\25-04-87-02 Plans.dwg

Plot Date: 5/1/2026 11:19 AM

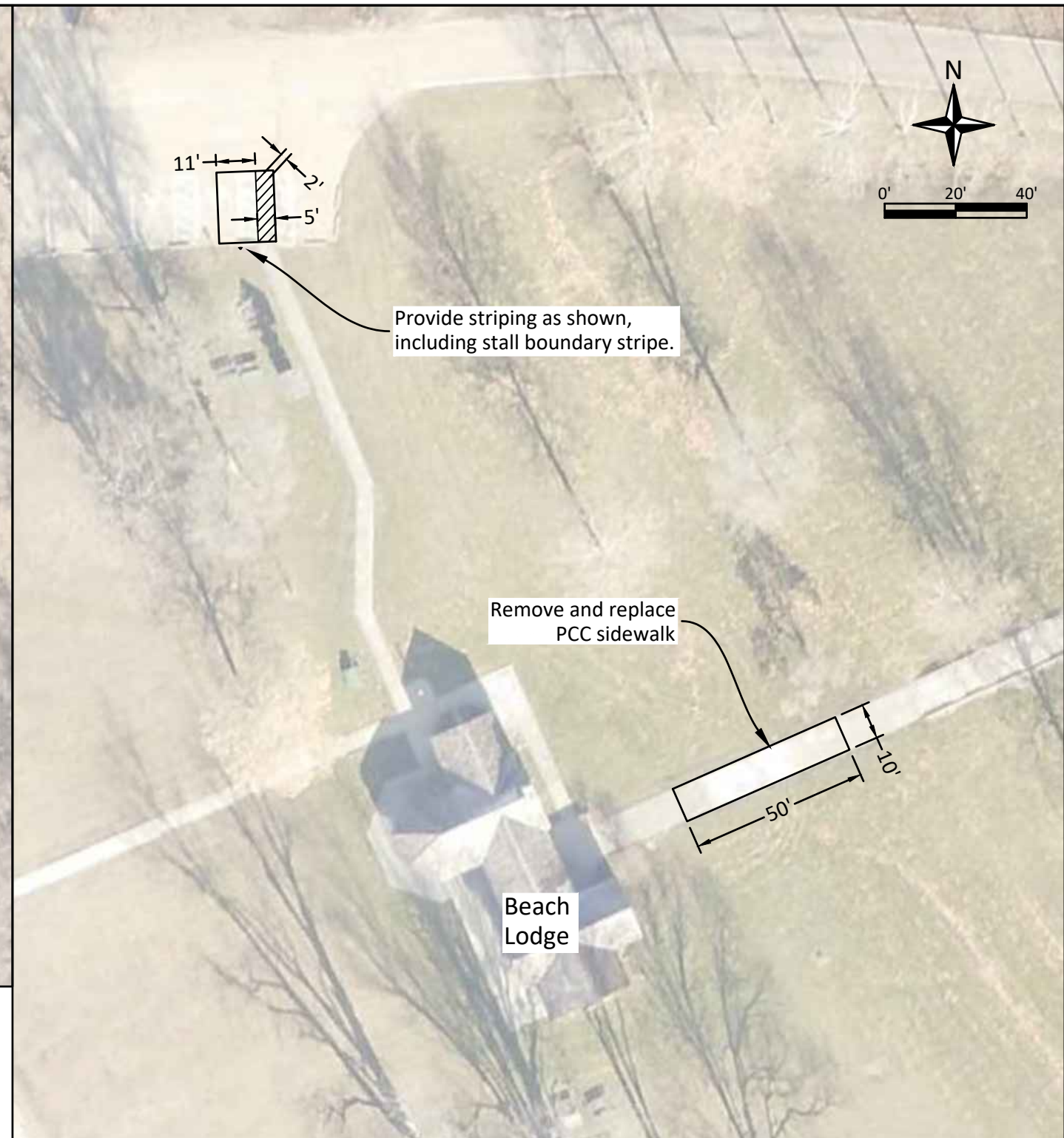


Drawn by: ZG	
Revision	Date

C:\Users\Zach Gunsoolley\Desktop\25-04-87-02 Lo3F Accessibility Improvements\25-04-87-02 Plans.dwg
Plot Date: 5/1/2026 11:19 AM

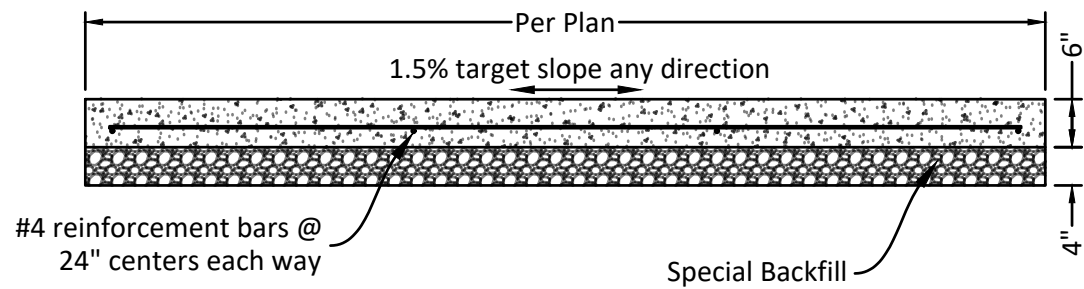


Site 1 CCC Shelter

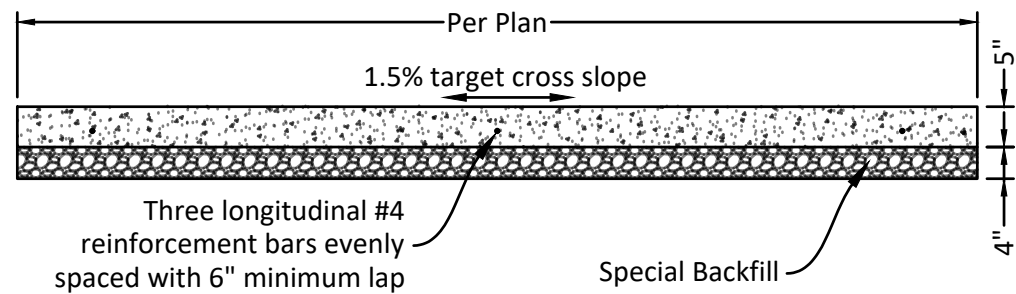


Site 2 Beach Lodge

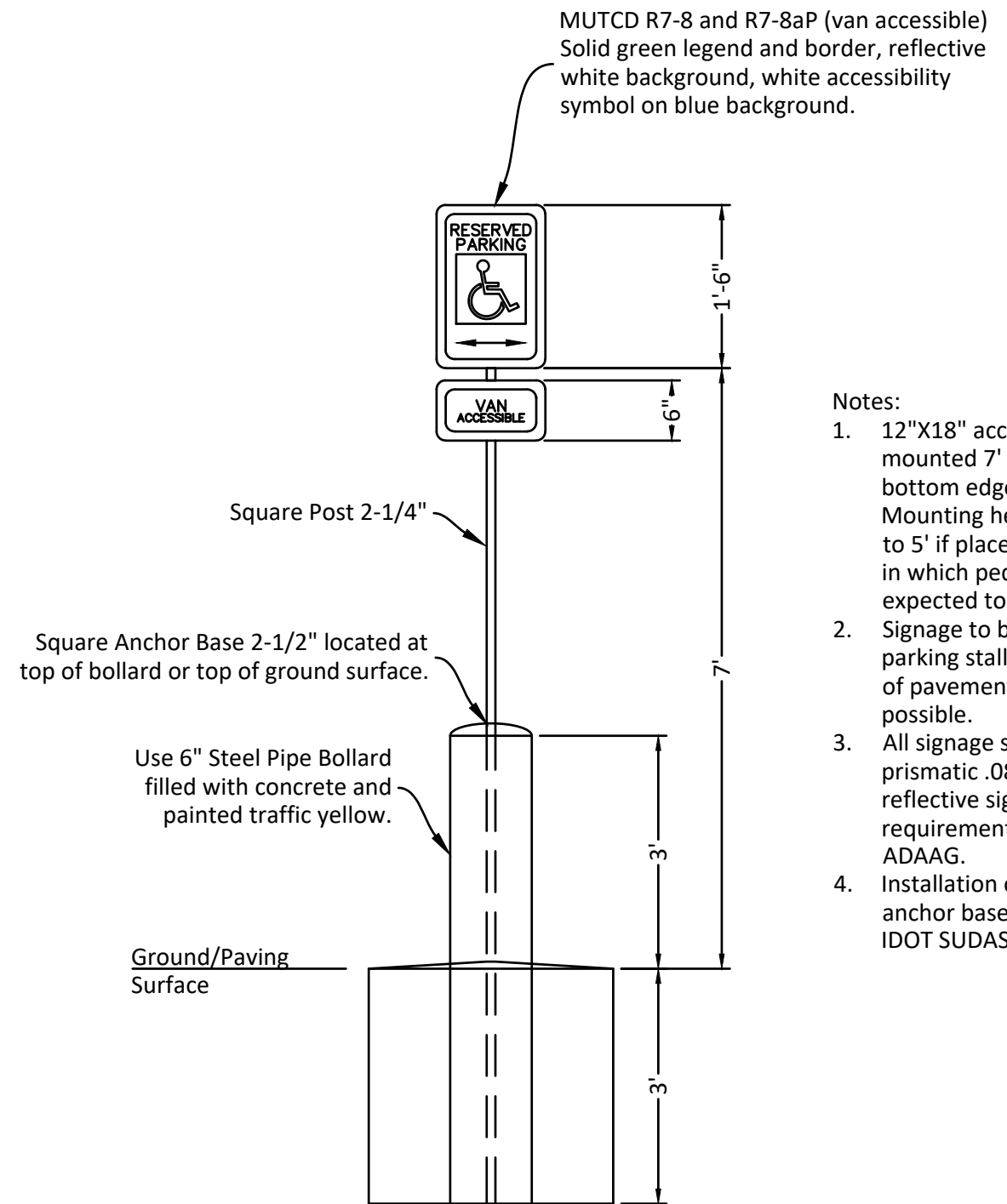
Plot Date: 5/1/2026 11:19 AM C:\Users\Zach Gunsolley\Desktop\25-04-87-02 Lo3F Accessibility Improvements\25-04-87-02 Plans.dwg



Parking Stall
Not to Scale



Sidewalk Detail
Not to Scale

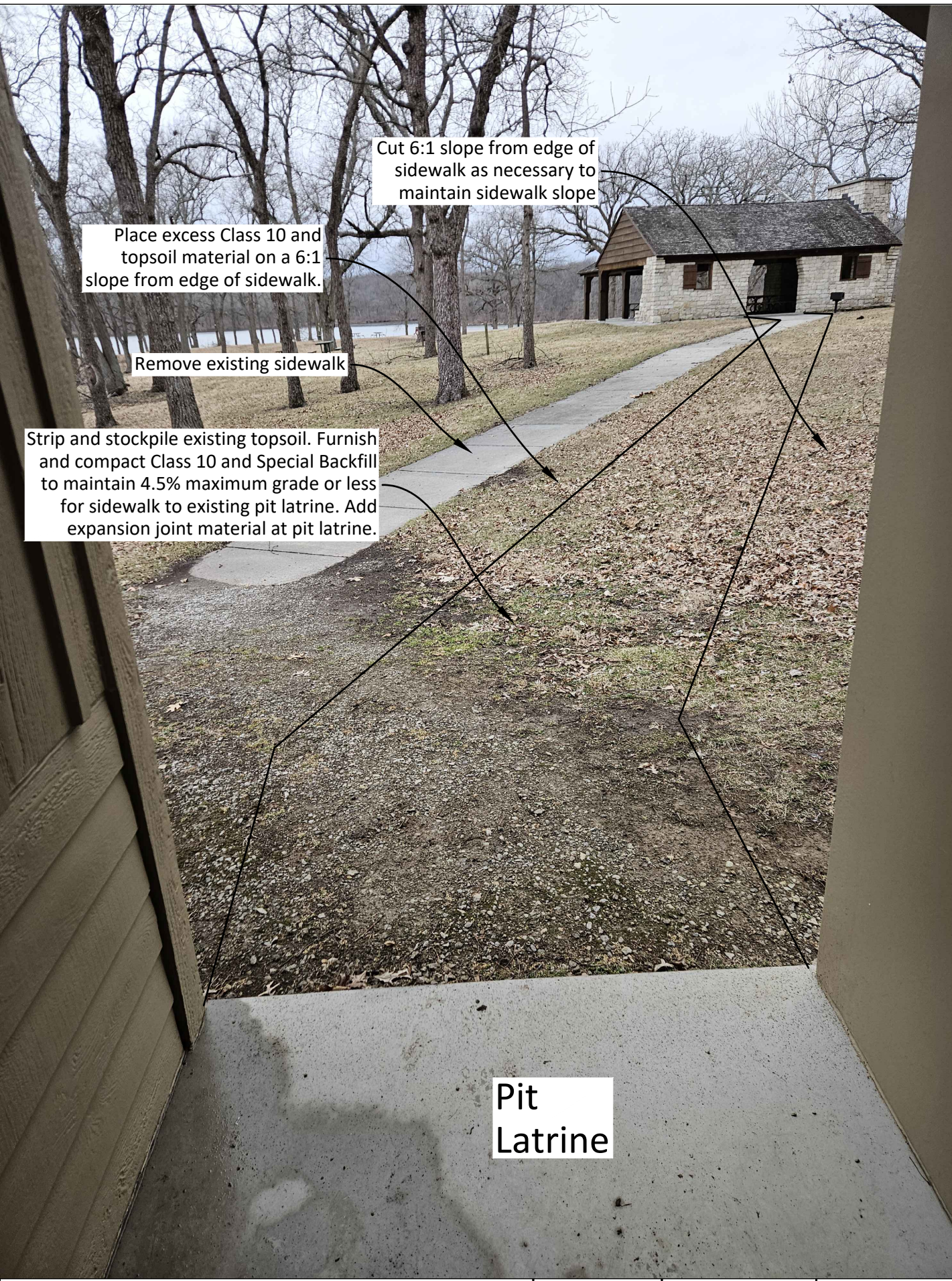


ADA Accessible Parking Signs Detail
Not To Scale

Notes:

1. 12"X18" accessibility sign shall be mounted 7' from finish grade to bottom edge of sign face. Mounting height may be reduced to 5' if placed in a landscape area in which pedestrians are not expected to use.
2. Signage to be located at end of parking stall, 2' back from edge of pavement, centered on stall if possible.
3. All signage shall be high-intensity prismatic .080 aluminum reflective sign meeting the requirements of the MUTCD and ADAAG.
4. Installation of square post and anchor base in accordance with IDOT SUDAS Section 8040.

C:\Users\Zach Gunsolley\Desktop\25-04-87-02 Lo3F Accessibility Improvements\25-04-87-02 Plans.dwg
Plot Date: 5/1/2026 11:19 AM



Site 1 Sidewalk Improvements at Pit Latrine (no scale)

See A.03 for location



Drawn by: ZG	
Revision	Date

Bid Date:
05/28/2026

Project Number:
25-04-87-02

Accessibility Improvements
Lake of Three Fires State Park, Taylor County

Site 1 Sidewalk Improvements at Pit Latrine

Sheet No:
B.02

Plot Date: 5/1/2026 11:19 AM C:\Users\Zach.Gunsolley\Desktop\25-04-87-02 Lo3F Accessibility Improvements\25-04-87-02 Plans.dwg

Estimated Quantities

Item	Description	Quantity	Unit
Site 1			
1	2102-0425070 Special Backfill	50	Tons
2	2102-2710070 Excavation, Cl 10, Roadway and Borrow	24	CY
3	2105-8425015 Topsoil, Strip, Salvage and Spread	19	CY
4	2511-7526005 Sidewalk, Reinforced PCC, 5 In.	202	SY
5	2515-2475006 Parking Stall, Reinforced PCC, 6 In.	36	SY
6	2526-8285000 Construction Survey	1	LS
7	2527-9263209 ADA Striping and Van Parking Sign	1	LS
8	2533-4980005 Mobilization	1	LS
9	2601-2634105 Mulching, Bonded Fiber Matrix	0.1	Acre
10	2601-2636044 Seeding and Fertilizing (Urban)	0.1	Acre
11	2602-0000309 Perimeter & Slope Sediment Control Device, 9 In.	75	LF

Estimate Reference Information

1. See referenced IDOT specification and Sheet B.01. In fill areas, place and compact after Class 10 placement.
2. See referenced IDOT specification. Place and compact in fill areas below special backfill and topsoil.
3. See referenced IDOT specification. Place in areas after Class 10 placement.
- 4,5. See referenced IDOT specification and Sheet A.03, B.01 and B.02. Class C mix, Class 2 durability coarse aggregate.
6. See referenced IDOT specification. This item includes all necessary survey and staking to complete work in accordance with the Contract Documents and 2010 ADA Standards. Non-compliant work shall be removed and replaced at the sole expense of the contractor. Noteworthy ADA requirements:
 - A. 2% maximum cross slope on sidewalks.
 - B. 5% maximum running slope on sidewalks.
 - C. 2% maximum slope in any direction on parking stalls, landing areas, access aisles.
7. See referenced IDOT specification and Sheet A.03 and B.01. Two locations, but Van Parking Sign only at CCC Shelter.
- 8-11. See referenced IDOT specification.

General Information

1. Verify actual locations and elevations with DNR Engineer.
2. All work shall conform to and be performed in accordance with all applicable codes and ordinances.
3. The contractor shall visit the site and inspect the project area and thoroughly familiarize themselves with the actual job conditions prior to bidding and the start of work. Failure to visit the project site shall not relieve the contractor from performing the work in accordance to the plans, specification, special provisions and contract.
4. The contractor shall verify, at the site, all dimensions and conditions shown on the plans and shall notify the DNR Engineer of any discrepancies, omissions, and/or conflicts prior to proceeding with the work.
5. It shall be the contractor's responsibility to provide waste areas or disposal sites for excess material (excavated material or broken concrete) which is not desirable to be incorporated into the work involved on this project. No payment for overhaul will be allowed for material hauled to these sites. No material shall be placed within the right-of-way, unless specifically stated in the plans or approved by the DNR Engineer.
6. The contractor shall not disturb desirable grass areas and desirable trees outside the construction limits. The contractor will not be permitted to park or service vehicles and equipment or use these areas for storage of materials. Storage, parking and service areas will be subject to the approval of the DNR Engineer.
7. Where utilities and fixtures are shown as Existing on the plans or encountered within the construction area, it shall be the responsibility of the contractor to notify the DNR Engineer of those utilities prior to the beginning of any construction. The contractor shall be afforded access to these facilities for necessary modification of services. Underground facilities, structures and utilities have been plotted from available surveys and records and therefore their locations must be considered approximate only. It is possible there may be others, the existence of which is presently not known or shown. It is the contractor's responsibility to determine their existence and exact location and to avoid damage thereto. No claims for additional compensation will be allowed to the contractor for any interference or delay caused by such work.
8. The contractor shall shape graded area to maintain surface drainage. All elevations are to finish grade.
9. The contractor is expected to have materials, equipment, and labor available on a daily basis to install and maintain erosion control features on the project. This may involve seeding, silt fence, rock ditch checks, silt basins or silt dikes.
10. The Iowa DOT Standard Specifications for Highway and Bridge Construction, Series 2023, plus General Supplemental Specifications and Supplemental Specifications effective at the time of letting, shall apply to this project. The item's description includes applicable IDOT specification sections.
11. Work Restrictions: Work cannot begin until September 14, 2026. This includes mobilization.



Drawn by: ZG	
Revision	Date