

## **Addendum 1 for RFB 938601-01**

Project Name: DOC ASP Tunnel Repairs

RFB #: 938601-01

DAS Project #: 9386.01

Date: 12/5/2024

Bid Due: December 10<sup>th</sup>, 2024 at 2:00pm

### **Addendum No. 1 Items:**

1. No submitted questions following Pre-Bid Meeting received from [construction.procurement@iowa.gov](mailto:construction.procurement@iowa.gov)
2. See attached Meeting Minutes & Sign In Sheet from the November 18<sup>th</sup> and November 21<sup>st</sup> Mandatory Pre-Bid Meetings.
3. Tunnel Map provided by Boyd H. During Pre-Bid Meeting.
4. Photos Attached of ASP Tunnel
5. Attached is Shive-Hattery Addendum #01 Sheet Changes and Additional Details
  - i. New S501 Sheet with Joint Detail.
  - ii. New S102 Sheet including South Tunnel cut section.

END OF ADDENDUM

## RFB Pre-Bid #01 & #02 Minutes: Meeting #1

<b>Meeting Date</b>	Nov 18, 2024	<b>Meeting Time</b>	11:00 AM - 12:30 PM Central Time (US & Canada)
<b>Meeting Location</b>	Anamosa Pen. Admin Conference Room		
<b>Overview</b>	Meeting to allow prospective bidders to visit the site, when possible, and learn more about the project.		
<b>Notes</b>	Pre bid meeting #01 (11/18/2024) and Pre Bid Meeting #02 (11/21/2024)  Meeting minutes include comments, questions and concerns from both meetings.		
<b>Attachments</b>	<a href="#">prebid meeting sign in #02.pdf</a> , <a href="#">asp tunnel map.pdf</a> , <a href="#">prebid meeting sign in #01.pdf</a> , <a href="#">RFB 938601-01 Project Manual Final .pdf</a> , <a href="#">2024-10-30_IDAS_ASPTunnelRepairs_Bid_Signed&amp;Sealed.pdf</a>		

### Scheduled Attendees

Name	Company	Phone Number	Email	Attendance
Boyd Hoyt	Anamosa State Penitentiary	P: (319) 462-3504 ext. 2250	boyd.hoyt@iowa.gov	Present
Lisa Oswald	Anamosa State Penitentiary	P: (319) 462-3504	lisa.oswald@iowa.gov	Present
Noah Thelen	McGough Construction	P: (515) 639-3853	noah.thelen@mcgough.com	Present
Barry Voelker	McGough Construction	P: (515) 639-3853	barry.voelker@mcgough.com	Present
Chris Marvin	Shive Hattery Inc.	P: (515) 223-8104	cmarvin@shive-hattery.com	Present
Brandon Adams	State of Iowa - Department of Administrative Services		brandon.adams@iowa.gov	Present

### Introduction

No.	Mtg Origin	Title	Assignment	Due Date	Priority	Status
1.1	1	Introductions				Open
		<b>Description</b> Attendees				
		<b>Official Documented Meeting Minutes</b> See attached Pre-Bid Meeting #01 Sign In Sheet (11/21/2024)				
		ASP: Lisa O Boyd H Spencer K.				
		DAS: Brandon Adams				
		McGough: Noah Thelen Barry V.				

<p>Shive Hattery: Chris Marvin</p> <p>Contractors: Bi-State Masonry - Mark L. Vector Construction - Kyle K.</p> <p>See attached Pre-Bid Meeting #02 Sign In Sheet (11/21/2024)</p> <p>ASP: Lisa O. Spencer K</p> <p>DAS: Brandon Adams</p> <p>McGough: Noah Thelen</p> <p>Shive Hattery: Matt Mettemeyer</p> <p>Contractors: Tricon - Jeff Frick WRH Inc - Mitch Vangson Western Specialty - Thomas Derry &amp; Todd Fagen</p>
--

**Project Overview**

No.	Mtg Origin	Title	Assignment	Due Date	Priority	Status
2.1	1	Project Description				Open
<p><b>Description</b></p> <p>Remedial measures and repairs to two stretches' of utility tunnels at locations having structural concerns at Anamosa State Penitentiary, Anamosa, Iowa 52205. The north tunnel location will consist of removal and replacement of 42.5' of tunnel lid and wall. This location will receive a new access hatch and ladder poured back in place (This is part of Add#01). The South Tunnel will consist of 297.56' of tunnel lid and wall replacement. Areas on the drawing note wall locations that will need repaired via CMU blocks and poured concrete walls. The south tunnel will have an existing pipe chase that will be re-installed new at noted location (This is part of base bid)</p> <ul style="list-style-type: none"> <li>• Base bid - Bid Package #01 - Complete; All material, labor and equipment associated with all work shown on contract documents.</li> <li>• Alternates - ADD Alternate #01 - Supply and Installation of Access Hatch and Ladder                         <ul style="list-style-type: none"> <li>◦ Keyed cylinder lock access hatch with ladder as shown on north tunnel. Basis of design Bilco J-4ALHH20 hatch with Bilco Ladder Up.</li> </ul> </li> <li>• Unit prices - NONE.</li> </ul>						
<p><b>Official Documented Meeting Minutes</b></p> <p>Project was discussed identifying the two areas of construction. One bid package was assumed for this project and alternate was reviewed.</p> <p>Access Hatch and Ladder will be included in the Alternate #01, the pipe chase was part of base bid. Shive Hattery will work on additional details to be provided on pipe chase for replacement since salvaging the existing is unlikely without damage.</p> <p>ASP informed that staffing needs from the facility will not allow both the north and south tunnel to be worked on at one time. The north tunnel was proposed to start first due to the damage it currently is in and ease of replacement.</p> <p>It was discussed that the existing conduit and data cabling attached to the tunnel walls will need to be removed and temporary supported or re-attached out of the way of demolition and construction. ASP has went into the tunnel and identified as many wires and cable as possible as well as AIP (Abandoned In Place).</p>						

Shoring details are not provided as this will be open for the contractor to design and come up with proposed system.

No.	Mtg Origin	Title	Assignment	Due Date	Priority	Status
2.2	1	Project Schedule				Open
<p><b>Description</b></p> <ul style="list-style-type: none"> <li>Contract(s) Issued: Week of December 16th</li> <li>Submittals: End December 2024 - January 2025</li> <li>Construction: April 2025 (Spring)</li> <li>Closeout: July 2025 - August 2025</li> </ul> <p>A pull-plan session will be held with the successful bid package contractors to finalize the construction schedule.</p> <p>State Holidays: New Year's Day, Martin Luther King Day, Memorial Day, 4th of July, Labor Day, Veterans Day, Thanksgiving and day after Thanksgiving, Christmas Day</p> <p><b>Official Documented Meeting Minutes</b></p> <p>Project schedule was reviewed and it was informed that the schedule could be varied based on the use of scaffolding to allow more tunnel cap to be removed rather than the 8 foot length unsupported.</p> <p>Schedule was reviewed and concern based on the durations proposed as this work could last longer with the access and security measures imposed by ASP.</p> <p>ASP informed that Mid May the steam lines will be shut down in the south tunnel.</p> <p>Substantial Completion is from July 18th-24th.</p>						

No.	Mtg Origin	Title	Assignment	Due Date	Priority	Status
2.3	1	Site Rules				Open
<p><b>Description</b></p> <ul style="list-style-type: none"> <li>Onsite supervision by Prime Contractor is required at all times when work by that contractor or their subcontractors/suppliers is taking place.</li> <li>Contractors shall provide daily logs for each day they are on site.</li> <li>Construction progress meeting will be established once construction starts.</li> <li>It is of the utmost importance to show respect and courtesy to all staff at all times.</li> <li>Clean all debris, materials, and bring all finishes back to existing conditions in the area they were working in prior to moving to the next area.</li> <li>No smoking, vaping or smokeless tobacco use onsite.</li> <li>Temporary facilities by contractor.</li> <li>Tool control - Contractor shall provide all equipment and tools for Contractor's own cleanup. Clean up shall be done at end of every shift or more frequently if required for the Contractor to perform their work, for other Contractors to perform their work, as required by the Owner's operations, and at the discretion of the Construction Manager.                         <ul style="list-style-type: none"> <li>Workers will be required to bring a list of tools they will be taking inside the facility. These tools will be inventoried going into the facility and again when the worker is leaving the facility. All tools will be accounted for throughout the day.</li> <li>All tools brought in will need to be with crews at all time and not left unattended.</li> <li>Any broken blades or bits will be required to be held onto and present at tool checkout.</li> </ul> </li> <li>Cell phones - Cell phones, weapons, and cameras/camcorders are not allowed inside the facility.                         <ul style="list-style-type: none"> <li>Foreman will be allowed to have one cell phone.</li> </ul> </li> <li>Background checks</li> </ul>						

- Must be performed on all on site employees, including sub-contractors.
- The Contractor hereby explicitly authorizes the Iowa DAS to conduct criminal history and/or other background investigation(s) of the Contractor, its officers, supervisory personnel, employees, and other staff retained by the Contractor or their sub-contractors for the performance of the contract.
- A State of Iowa record check request form will be provided at the pre-construction meeting of successful bidder.
- In addition to background checks all contractors who will be working onsite will need to take the PREA test which can be found here: [https://docs.google.com/presentation/d/1\\_8lcvvpMCYdqasseVuOxzY2ISqjS3RUi6Oups7t6-zA/pub?start=false&loop=false&delayms=3000&slide=id.p](https://docs.google.com/presentation/d/1_8lcvvpMCYdqasseVuOxzY2ISqjS3RUi6Oups7t6-zA/pub?start=false&loop=false&delayms=3000&slide=id.p)
- Work hours: 7am - 4pm, Monday through Friday unless arrangements are made in advance.
  - Gates close during count hours and no one is able to enter or exit until count is completed. Count starts at 12:00pm
- View Specification 01 1200 - Contract Summary for more information.

**Official Documented Meeting Minutes**

Tool control was discussed and informed that the contractors can save time by pre-filling out tool checklist sheets provided by ASP prior to showing up for work. It was also discussed that utilizing clean gangboxes and trailers with just the tools and equipment needed would speed up the process for ASP to review and inspect prior to entering the facility. All tool checks would be performed by the sally port entrance and all trucks/vehicles will be inspected entering and exiting. Time for tool check ins can be 1 hour without pre-filling checklists, but can be shortened if pre-work is done on the contractors end.

Work hours including checking out of the facility needs to happen prior to 4:00pm since the sallyport gate entrance will be shutdown. Weekend work and 4/10 hour days where not permitted due to guard hours and extra staffing.

Contractors reviewed the routing for dumpsters and trailers to get access to the site. maintenance road around the facility can be used.

Dumpster haul out will need to happen daily, ASP has a location for storing spoils outside the facility that can be used to stockpile and hauled out at a later date. It was suggested that dump trailers be used to haul out debris.

Additional Questions listed below.

**RFB Overview**

No.	Mtg Origin	Title	Assignment	Due Date	Priority	Status
3.1	1	Bid Submission				Open
<b>Description</b>						
<ul style="list-style-type: none"> <li>• Bids are due <b>Tuesday, December 10th at 2:00pm</b></li> <li>• The Bid shall be submitted to the Issuing Officer through the IMPACS Electronic Procurement System.                             <ul style="list-style-type: none"> <li>◦ Link and information is in the project manual</li> <li>◦ Contractors will need to register prior to bidding</li> <li>◦ Bidders will need to register regardless of whether it has already done business with the State of Iowa.</li> <li>◦ Bidders should complete the registration process and ensure the ability to log in as soon as possible to ensure Bids can be submitted on the due date.</li> <li>◦ Please make sure the electronic documents submitted contain any required signatures. Digital signatures will be accepted.</li> </ul> </li> <li>• Bid Opening will be held via conference call on <b>Tuesday, December 10th at 3:00pm</b></li> <li>• Contractor shall reference section 00 0116 for the bid submittal checklist                             <ul style="list-style-type: none"> <li>◦ Bid Proposal Information</li> <li>◦ Non Discrimination Clause Information</li> <li>◦ Contractor Targeted Small Business Enterprise Pre-Bid Contract Information</li> <li>◦ Bid Security – 5% of total Bid amount</li> </ul> </li> <li>• Apparent low bidder will be required to submit subcontractor/supplier list 48hrs after the bid opening</li> </ul>						
<b>Official Documented Meeting Minutes</b>						
Bid dates where reviewed.						

No.	Mtg Origin	Title	Assignment	Due Date	Priority	Status
3.2	1	Bid Schedule				Open
<b>Description</b> <ul style="list-style-type: none"> <li>• Questions/Substitutions Due in Writing to <a href="mailto:Construction.Procurement@iowa.gov">Construction.Procurement@iowa.gov</a>: <b>November 25th, 2024 by 2:00pm</b></li> <li>• Addendum Issued: December 2nd (Following questions)</li> <li>• Bids Due: <b>2:00 pm, Tuesday December 10th, 2024.</b></li> <li>• Tentative NOI Issued: Following bid results 1-2 days.</li> </ul>						
<b>Official Documented Meeting Minutes</b> Contractors were instructed to submit questions that come up during walk and pre-bid meeting.						

No.	Mtg Origin	Title	Assignment	Due Date	Priority	Status
3.3	1	Administrative Details				Open
<b>Description</b> <ul style="list-style-type: none"> <li>• Contractors will sign a modified ConsensusDocs 802. Example in the project manual.</li> <li>• Project-specific Certificate of Insurance must be provided prior to contract execution. Follow example in the project manual and limits in the 802.</li> <li>• Project-specific P&amp;P bonds must be provided prior to contract execution.</li> <li>• Successful contractor must turn in their list of subcontractors and suppliers within 48 hours of the bid.</li> <li>• DAS will provide tax exempt certificates upon request.</li> <li>• Procore will be used for all project management, at no cost to the trade contractor.                             <ul style="list-style-type: none"> <li>◦ Submittals, Invoicing, RFIs, ASIs, PRs, RFQs</li> <li>◦ Contracts, Change Orders and Certificates of Substantial and Final Completion will also use DocuSign</li> </ul> </li> <li>• Contractor Schedule of Values shall be broken out as specified in the project manual.                             <ul style="list-style-type: none"> <li>◦ SOV must contain a closeout line item for at least 1% of the total contract value.</li> <li>◦ This line item can only be invoiced once the certificate of final completion has been signed by all parties.</li> </ul> </li> </ul>						
<b>Official Documented Meeting Minutes</b> Group was aware of DAS admin items and we reviewed P&P and COI requirements for quick turn around on 802 contracts.						

No.	Mtg Origin	Title	Assignment	Due Date	Priority	Status
3.4	1	Pre-Bid Site Visits				Open
<b>Description</b> Site walk with prospective Bidders, an additional pre-bid meeting will be held on Thursday, November 21st at 11:00am.						
<b>Official Documented Meeting Minutes</b> The group was able to walk both the south tunnel and north tunnel as well as review the access and work areas.						

**Questions**

No.	Mtg Origin	Title	Assignment	Due Date	Priority	Status
4.1	1	Questions				Open
<b>Description</b> Submit all questions in writing to <a href="mailto:construction.procurement@iowa.gov">construction.procurement@iowa.gov</a> .						

**Official Documented Meeting Minutes**

Questions during the pre bid meetings and walk:

- Concrete length replacement and CMU repair in the south tunnel? No length given on drawings.
  - Shive stated that 15' for the CMU replacement (This could be concrete if easier) and 10' at the concrete wall (Full Hight).
- Fencing and blocking off foot traffic if any exactions take place?
  - ASP would like snow fence or barriers in place to inform inmates of open excavations or areas of work. Tunnel openings need to be secured daily and not left open. metal plates may be used.
- Is Plywood forms a suitable closure for the tunnel if left open.
  - NO, it was requested that metal plates be used. If the metal plates are heavy enough they don't need to be secured. 1/4" steel or better 8' sheets would be suitable to not require additional measures.
- Cold Joints or Caulk joints at location for 8' sections?
  - Shive to provide detail in Addendum.
- Concrete testing requirements for the pours?
  - It was determined that testing could be performed at the beginning, middle and end of each tunnel location (North section and South Section).
- Pictures requested from Boyd for the locations around the Tennis Court, inside the tunnel and of the area around the south section of tunnel.
  - Photos will be posted and/or link available in Addendum.
- Do the shrubs need to be replaced or accounted for during the excavations of the south tunnel?
  - NO, ASP will plan on removing them.
- On the south tunnel section does the curb need to be poured back against the landscaping/shrubs.
  - NO
- Estimated construction cost of the project?
  - \$697,750.00 and this did not include shoring.
- Boyd provided tunnel map, which will be attached to Addendum.

Questions Submitted to [Construction.procurement@iowa.gov](mailto:Construction.procurement@iowa.gov):

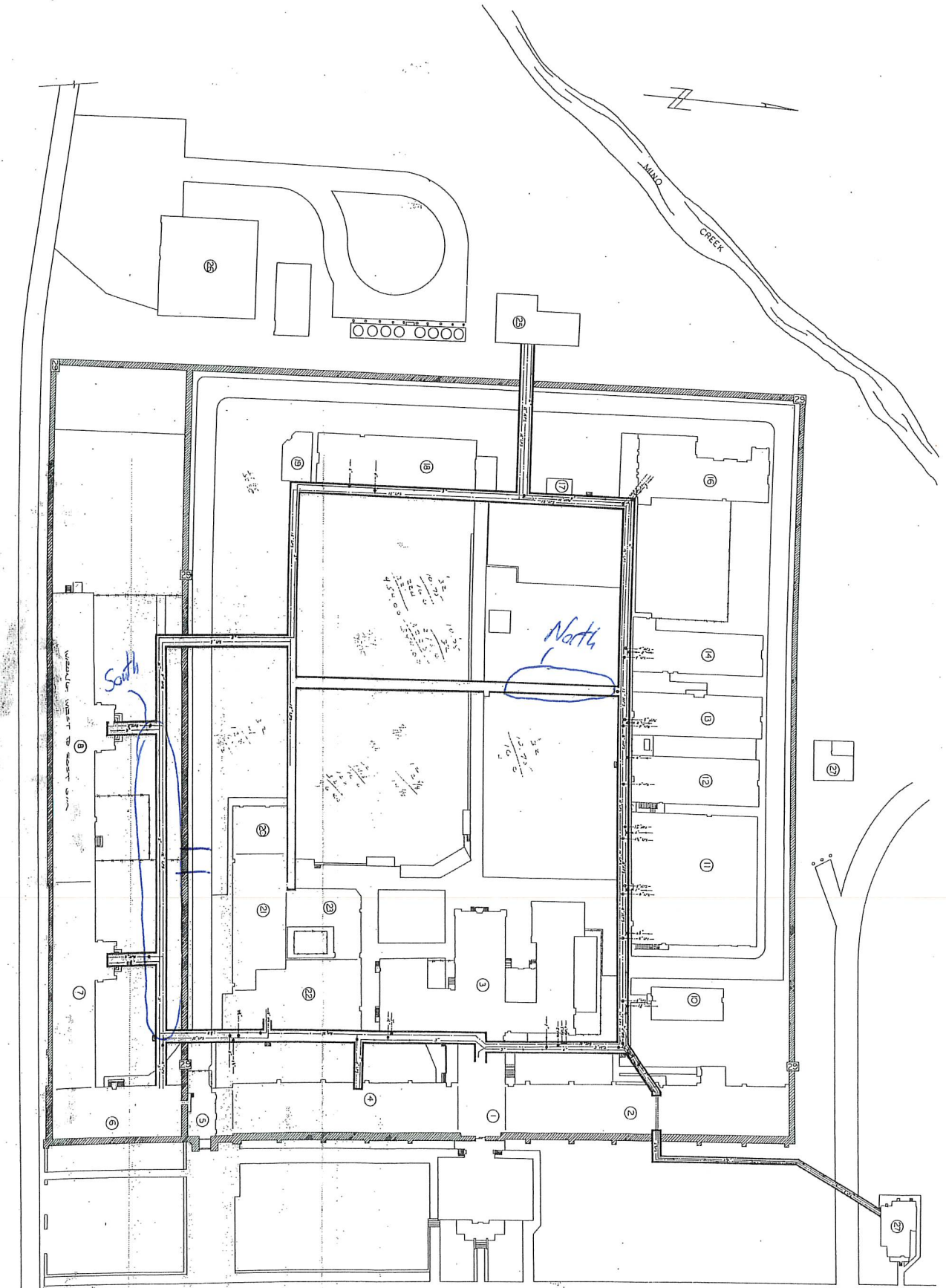
- None received

These meeting minutes are believed to be an accurate reflection of those items discussed and the conclusions that were reached during the referenced meeting. Please contact State of Iowa - Department of Administrative Services if there are any discrepancies or questions with the content of these minutes.





tumple drawn oversized for detail purposes



- BUILDING CODE
- ① ADMIN. BLDG.
  - ② OLD NORTH HOUSE
  - ③ KITCHEN - DINNING ROOM
  - ④ CELLHOUSE 2
  - ⑤ VEHICLE ENTRANCE
  - ⑥ SCHOOL
  - ⑦ CELLHOUSE ONE
  - ⑧ HUB BUILDING
  - ⑨ GREENHOUSE
  - ⑩ LICENSE PLATES
  - ⑪ VOG, CARPENTRY
  - ⑫ SIGN SHOP
  - ⑬ LAUNDRY
  - ⑭ MOTOR SCHOOL
  - ⑮ LATRINE
  - ⑯ FURNITURE SHOP
  - ⑰ OLD YARD SHOP
  - ⑱ COMMISSARY
  - ⑲ GYM
  - ⑳ MAINTENANCE
  - ㉑ DEPUTIES OFFICE
  - ㉒ POWER HOUSE
  - ㉓ WAREHOUSE
  - ㉔ RESIDENCES
  - ㉕ TONNERS
- STEAM DISTRIBUTION  
UTILITY TUNNEL SYSTEM  
IOWA STATE MEN'S REFORMATORY  
ANAMOSA, IOWA
- CALEVIN J. AUGER - WARDEN  
JON HUSMAN - Supt. of Bldg. & G.R.O.  
DRAWN BY *[Signature]* OCT. 1981
- SCALE 1" equals 32'
- SYMBOL CODE
- high pressure
  - low pressure
  - condensate
  - gate valve

# North Tunnel



# South Tunnel



pipe pass



Gate section to be removed by ASP



REINFORCED UNIT MASONRY

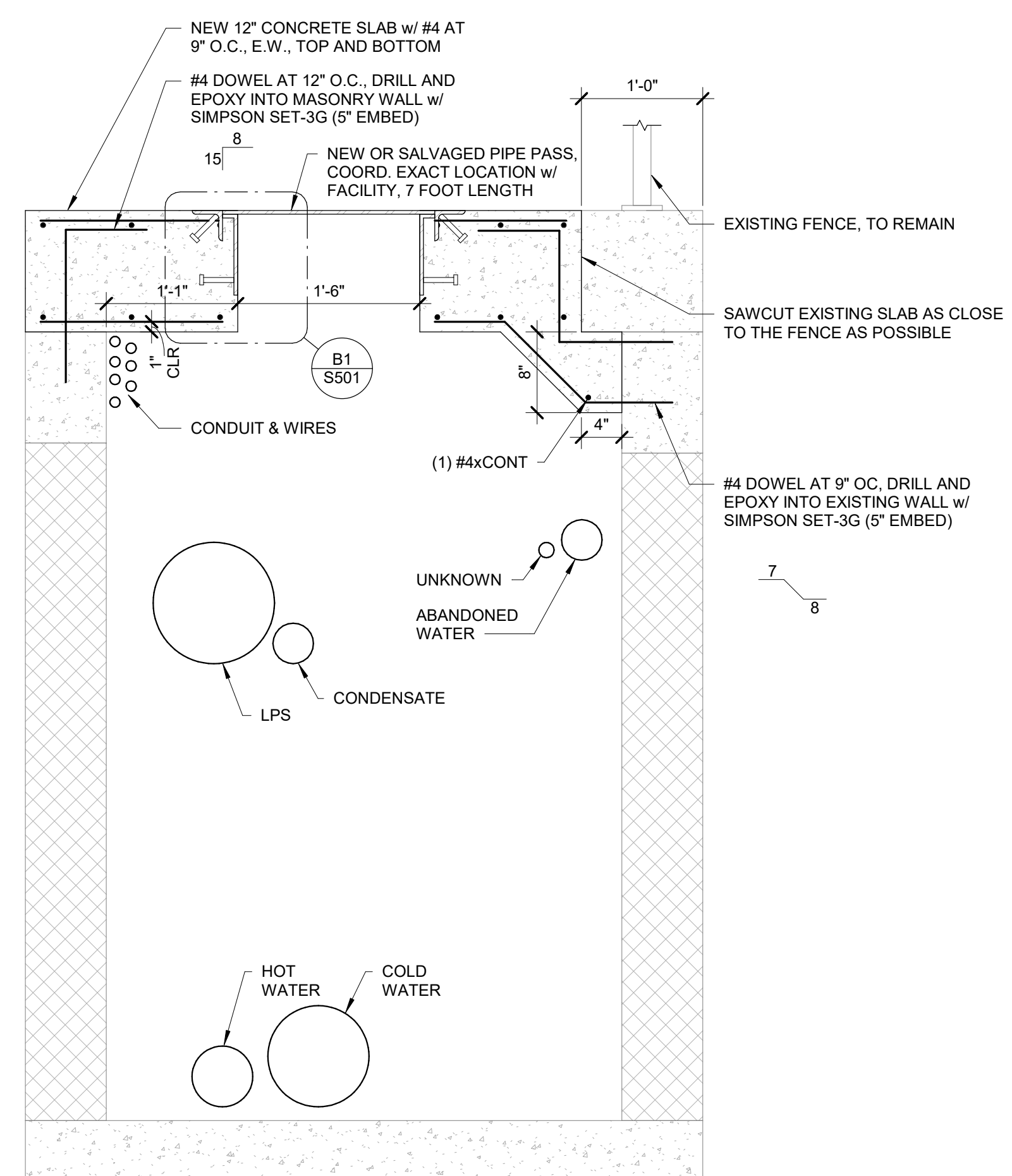
- CONCRETE MASONRY UNIT STANDARDS AND COMPRESSIVE STRENGTHS:
 

DESIGN ASSEMBLY STRENGTH, F <sub>m</sub> , BY UNIT STRENGTH METHOD	2500 PSI
CONCRETE MASONRY UNITS (NORMAL WEIGHT)	ASTM C90
MASONRY GROUT	ASTM C476
MASONRY MORTAR, TYPE S	ASTM C270
REINFORCING FOR MASONRY	ASTM A616
JOINT REINFORCEMENT, LADDER TYPE, 1.7(9GA)	ASTM A1064
	F <sub>y</sub> = 60 KSI
- THE LOAD BEARING CONCRETE MASONRY WALLS FOR THIS PROJECT WERE DESIGNED TO SPAN VERTICALLY AND BE BRACED BY THE LID ELEMENTS OF THE STRUCTURE. DURING CONSTRUCTION THE MASONRY CONTRACTOR SHALL PROVIDE LATERAL BRACING UNTIL THE LID STRUCTURE IS INSTALLED AS RECOMMENDED BY ACI 530 AND THE LATEST REVISION OF "STANDARD PRACTICE FOR BRACING MASONRY WALLS UNDER CONSTRUCTION", PREPARED BY THE COUNCIL FOR MASONRY WALL BRACING. THIS BRACING IS TO PREVENT UNNECESSARY STRESS OR DAMAGE TO THE MASONRY WALLS FROM LATERAL LOADS, WHICH CAN OCCUR WHILE THE WALLS ARE NOT PROPERLY BRACED BY THE LID STRUCTURE.
- SPlice REINFORCING USING CONTACT LAPS TO THE LENGTHS INDICATED BELOW:

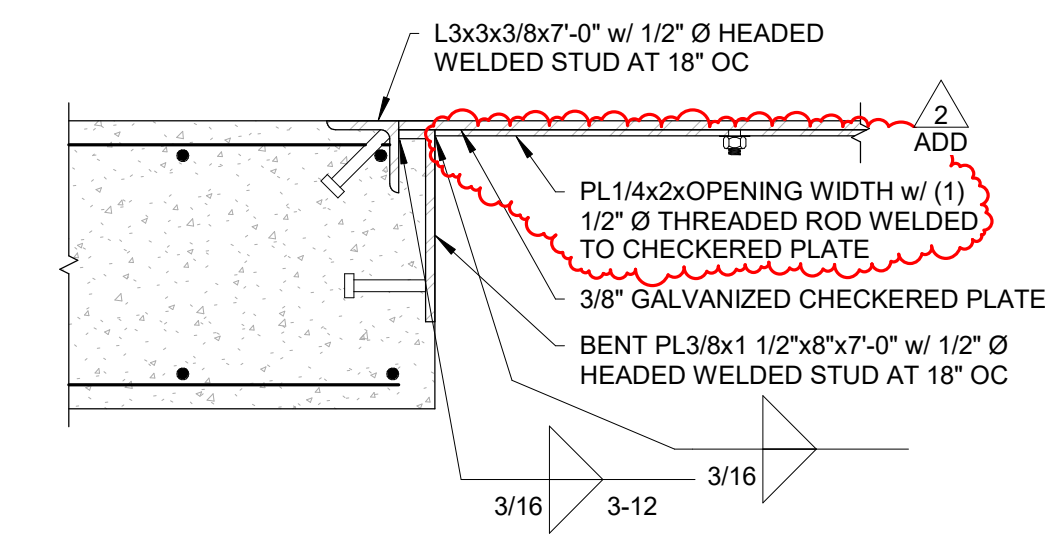
BAR SIZE	MINIMUM LAP SPlice LENGTH			
	6" CMU	8" CMU	10" CMU	12" CMU
#3	27"	27"	27"	27"
#4	36"	36"	36"	36"
#5	45"	45"	45"	45"
#6	54"	54"	54"	54"
#7	NP	63"	63"	63"
#8	NP	113"	72"	72"
#9	NP	NP	82"	82"

NP = NOT PERMITTED  
NOTES TO SPECIFIER:  
BASED ON 100% ALLOWABLE TENSILE STRESS IN REINFORCING (24,000 PSI)  
LAP SPlice CAN BE REDUCED (DIV BY 1.5) IF STRESS IS LESS THAN 80%  
BARS GREATER THAN #9 ARE REQUIRED TO BE MECHANICALLY SPliced

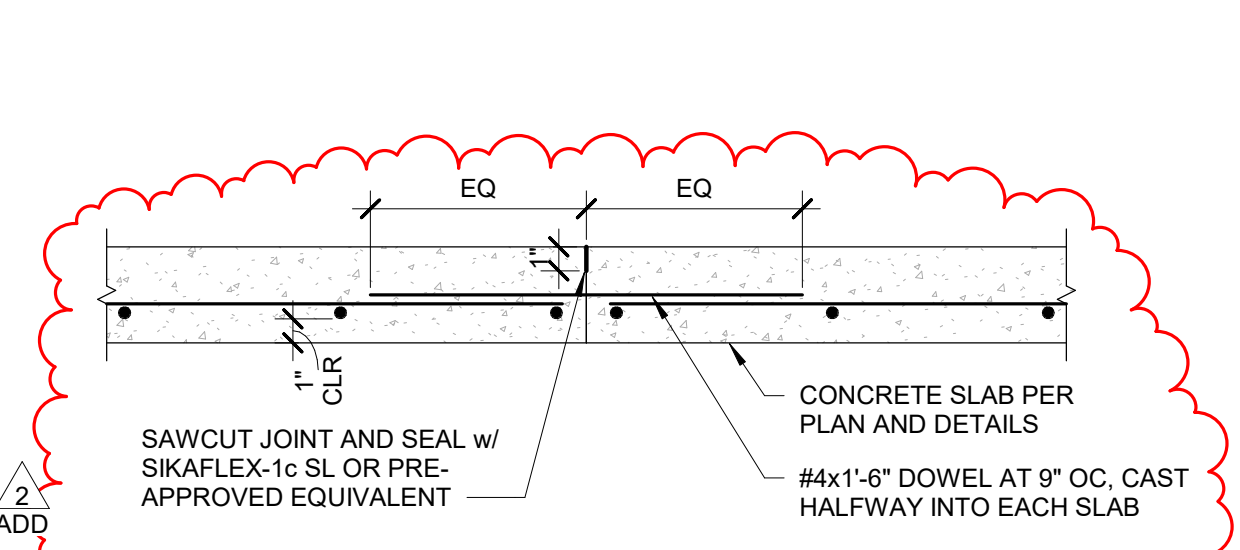
- MASONRY MATERIALS AND CONSTRUCTION SHALL COMPLY WITH THE REQUIREMENTS OF "SPECIFICATION FOR MASONRY STRUCTURES AND RELATED COMMENTARIES (ACI 530/ASCE 6/TM 602) PUBLISHED BY AMERICAN CONCRETE INSTITUTE, EXCEPT WHERE REQUIREMENTS ARE EXCEEDED BY THESE CONTRACT DOCUMENTS.
- THOROUGHLY MIX MORTAR AND GROUT INGREDIENTS IN ACCORDANCE WITH THE REFERENCED ASTM ABOVE IN QUANTITIES NEEDED FOR IMMEDIATE USE. DO NOT USE ANTI-FREEZE COMPOUNDS TO LOWER THE FREEZE POINT.
- ALL LOAD BEARING MASONRY WALLS SHALL BE FULL MORTAR BED, HEAD AND COLLAR JOINTS. LAY HOLLOW MASONRY UNITS WITH FACE SHELL BEDDING ON HEAD AND BED JOINTS.
- HORIZONTAL JOINT REINFORCEMENT: ALL LOAD BEARING MASONRY WALLS SHALL BE CONSTRUCTED WITH LADDER TYPE JOINT REINFORCEMENT AS FOLLOWS:
  - SPACED AT A MAXIMUM OF 16" ON CENTER IN WALL CONSTRUCTION.
  - LAP JOINT REINFORCEMENT ENDS MINIMUM 6 INCHES.
  - PLACE HORIZONTAL JOINT REINFORCEMENT ONE ROW ABOVE AND ONE ROW BELOW ALL WALL OPENINGS.
  - PLACE CONTINUOUS JOINT REINFORCEMENT IN FIRST JOINT BELOW THE TOP OF THE WALL. DO NOT CONTINUE HORIZONTAL JOINT REINFORCEMENT ACROSS CONTROL OR EXPANSION JOINTS.
- ALL LOAD BEARING REINFORCED UNIT MASONRY WALLS SHALL HAVE (1) #5 BAR VERTICALLY IN GROUTED CELL AT ALL CORNERS, ENDS OF WALLS, WALL INTERSECTIONS, AND IMMEDIATELY ADJACENT TO EACH SIDE OF CONTROL JOINTS AND WALL OPENINGS.
- CONCRETE MASONRY UNIT CORES SHALL BE PLACED WITH CELLS IN VERTICAL ALIGNMENT. ALL CORES CONTAINING REINFORCEMENT AND ANCHORS SHALL BE FILLED SOLID WITH GROUT. GROUT ALL CELLS TO RECEIVE ANCHORS.
- PROVIDE A MINIMUM OF 1/2" OF GROUT BETWEEN THE MAIN REINFORCING AND THE MASONRY UNITS. ALL VERTICAL REINFORCEMENT SHALL BE CENTERED IN THE WALL UNLESS NOTED OTHERWISE.
- ALL MASONRY WALLS SHALL HAVE VERTICAL CONTROL JOINTS AT A MAXIMUM SPACING OF 25 FEET AS FOLLOWS:
  - COORDINATE CONTROL JOINTS WITH LOCATIONS INDICATED ON ARCHITECTURAL DRAWINGS.
  - CONTROL JOINTS SHALL NOT INTERFERE WITH BEAMS, JOISTS, OR LINTEL BEARING.
  - PROVIDE PREFORMED EXTRUDED RUBBER CONTROL JOINT DESIGNED FOR MASONRY WALLS CONFORMING TO ASTM D2000 2AA-805.
  - SEAL JOINT WITH SINGLE COMPONENT ELASTOMERIC POLYURETHANE SEALANT. COLOR TO MATCH MORTAR JOINTS.
- DOWELS IN FOOTINGS SHALL BE PLACED TO ALIGN WITH CORES CONTAINING REINFORCING STEEL. COORDINATE PLACEMENT BEFORE CONSTRUCTION OF FOOTING BEGINS.
- GROUT SOLID ALL CMU CORES BELOW ADJACENT GRADE OR BELOW SLAB ON GRADE CONSTRUCTION.
- DURING CONSTRUCTION OF WALLS, COVER TOPS OF WALLS, PARTIALLY COMPLETED MASONRY AND ANY OPEN WALL CAVITIES AT SILLS OR HEADERS WITH WATERPROOF SHEETING AT THE END OF EACH DAY'S WORK.
- MASONRY WALL CONSTRUCTION TOLERANCES
  - MAXIMUM VARIATION FROM UNIT TO UNIT: 1/16"
  - MAXIMUM VARIATION FROM PLANE OF WALL: 1/4"
  - MAXIMUM VARIATION FROM PLUMB: 1/4"
  - MAXIMUM VARIATION FROM LEVEL COURSING: 1/8"
  - MAXIMUM VARIATION OF JOINT THICKNESS: 1/8"
  - MAXIMUM VARIATION FROM CROSS SECTIONAL THICKNESS OF WALL: 1/4"
- BEAM BEARING CONDITIONS: FILL BLOCK CELLS SOLID WITH GROUT A DISTANCE OF 24" BENEATH AND 12" EACH SIDE OF BEAM REACTIONS OR OTHER CONCENTRATED LOADS IF NOT OTHERWISE REINFORCED. ALL BEAM AND JOIST POCKETS SHALL BE GROUTED SOLID OR FILLED WITH CONCRETE MASONRY UNITS AFTER STEEL ERECTION IS COMPLETE.



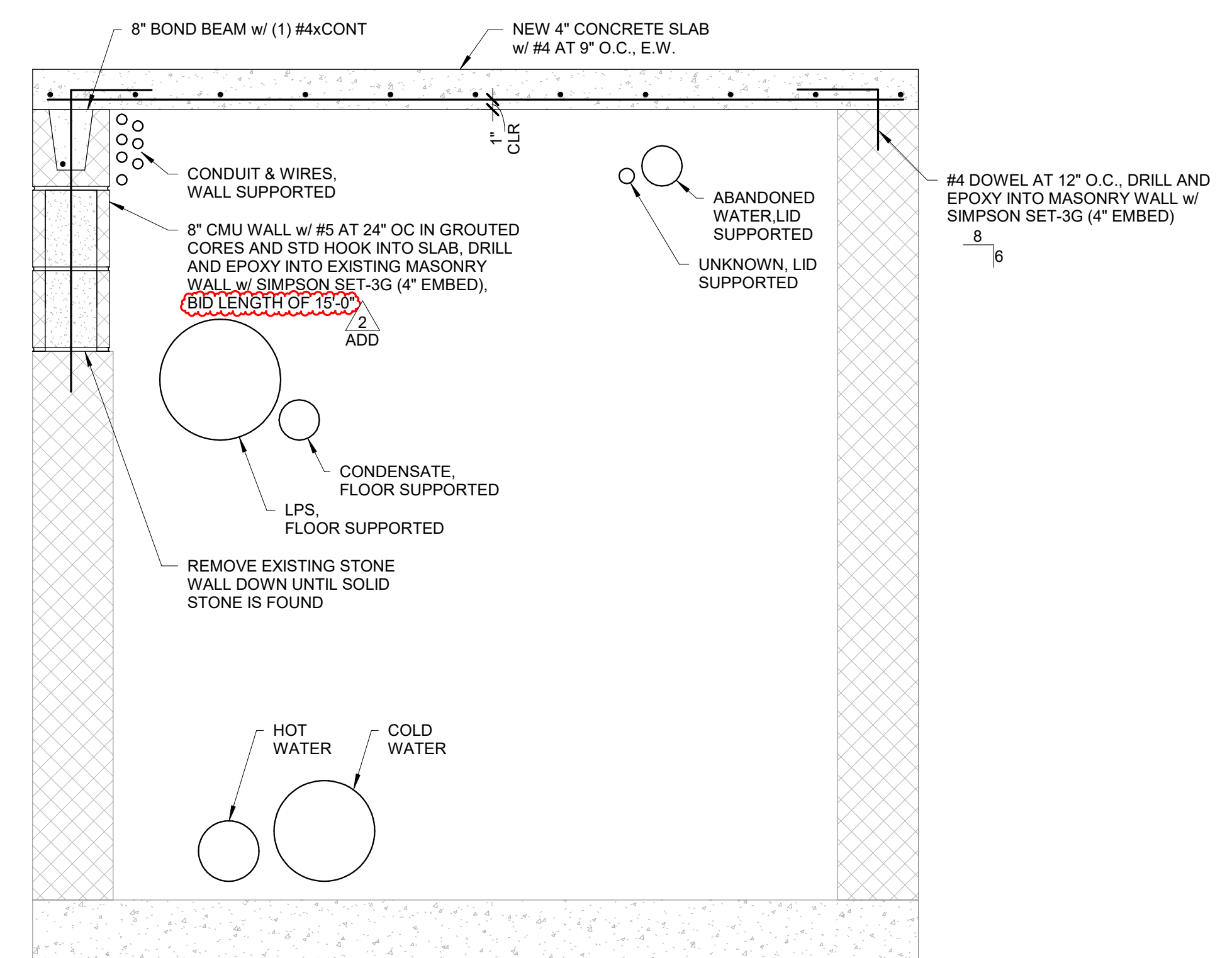
**A3** SOUTH TUNNEL NEW LID AT PIPE PASS  
1" = 1'-0"



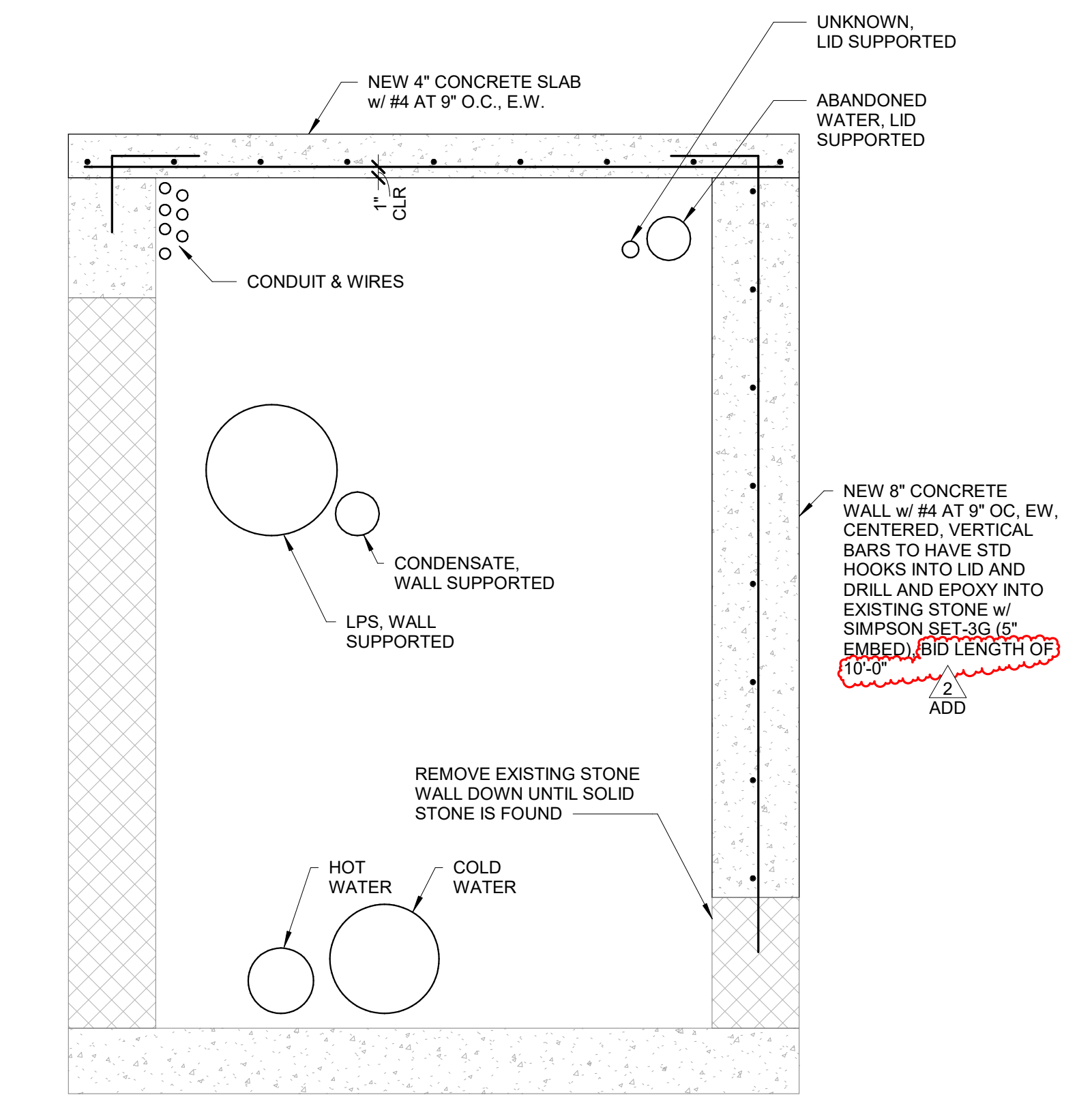
**B1** PIPE PASS DETAIL  
1 1/2" = 1'-0"



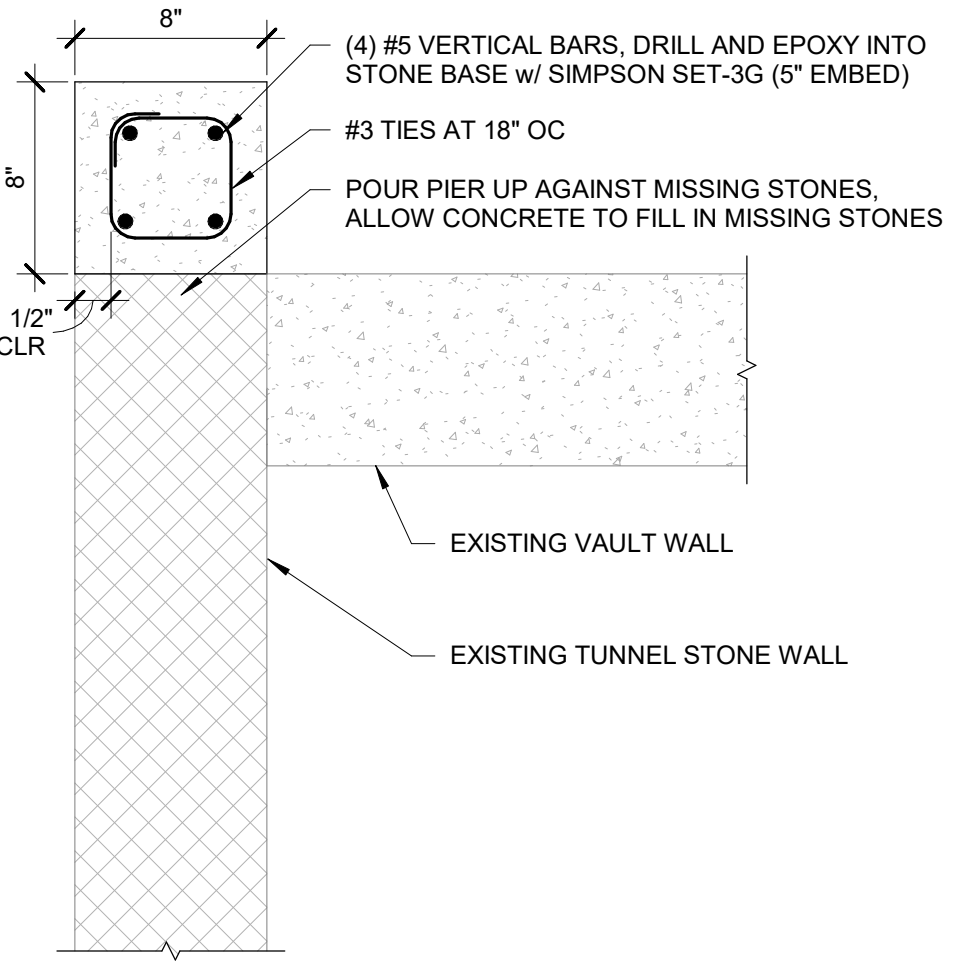
**D1** CONSTRUCTION JOINT  
1 1/2" = 1'-0"



**B3** SOUTH TUNNEL NORTH WALL REPAIR  
1" = 1'-0"



**A4** SOUTH TUNNEL SOUTH WALL REPAIR  
1" = 1'-0"



**B4** SOUTH TUNNEL CORNER REPAIR  
1 1/2" = 1'-0"

Autodesk Doc: 2240000400 DAS - Anamosa Tunnel Repair 2240000400-05-R04-DAS-Anamosa Tunnel Repair.rvt  
12/26/2024 11:34:49 AM