

**BUILDING INFORMATION**

APPLICABLE BUILDING CODE - 2015 IEBC AND IPC  
CLASSIFICATION OF WORK - REPAIR

REPLACEMENT OF DAMAGED MATERIALS (WINDOWS) FOR THE PURPOSE OF MAINTAINING COMPONENTS IN SOUND CONDITION WITH RESPECT TO EXISTING LOADS OR PERFORMANCE REQUIREMENTS.

CONFORMANCE REQUIREMENT (601.2) - THE WORK SHALL NOT MAKE THE BUILDING LESS CONFORMING THAT IT WAS BEFORE THE REPAIR WAS UNDERTAKEN.

**PROJECT DIRECTORY**

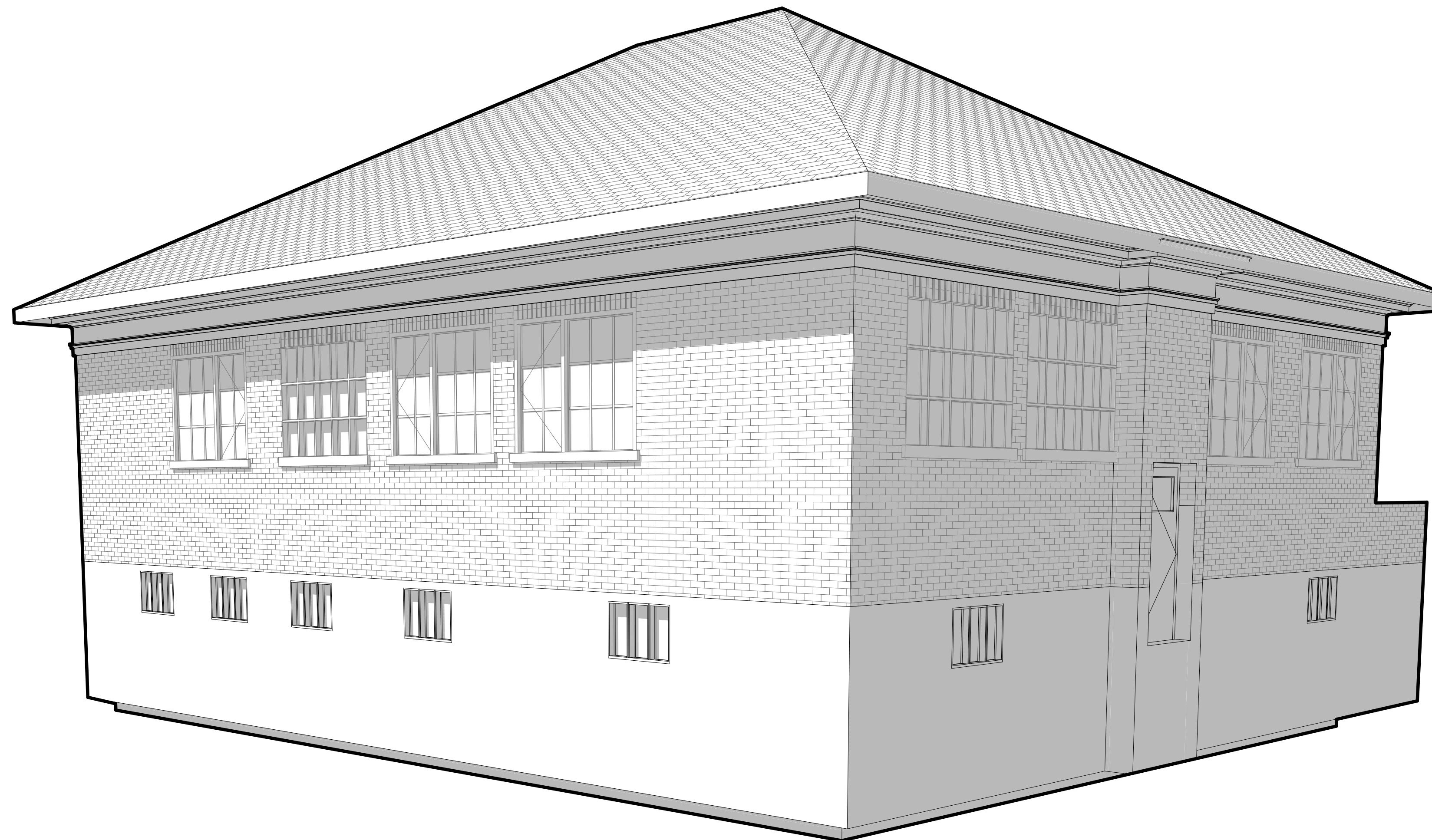
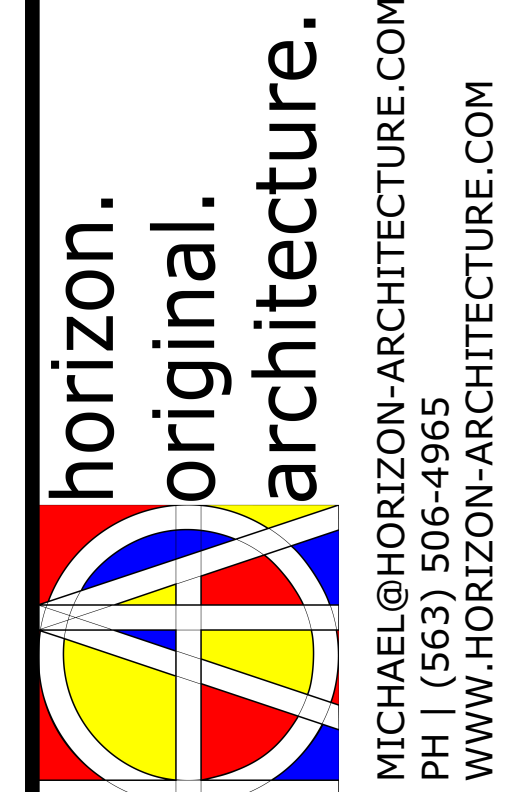
**OWNER**  
IOWA DEPARTMENT OF ADMINISTRATIVE SERVICES (DAS)  
109 EAST 13TH STREET  
DES MOINES, IA 50319  
OWNER'S REPRESENTATIVE: JENNIE ELLIOTT  
PHONE: 515.745.3244  
EMAIL: jennie.elliott@iowa.gov

**CONSTRUCTION MANAGER**  
SAMUELS GROUP  
2929 WESTOWN PARKWAY  
SUITE 200  
WEST DES MOINES, IA 50266  
PROJECT MANAGER: KYLE DAVIS  
PHONE: 515.822.6628  
EMAIL: kdavis@samuelsgroup.net

**ARCHITECT**  
HORIZON ARCHITECTURE  
3116 ALPINE COURT IOWA CITY IA 52245  
PHONE: (563) 506-4965  
CONTACT: MICHAEL NOLAN, AIA  
EMAIL: MICHAEL@HORIZON-ARCHITECTURE.COM

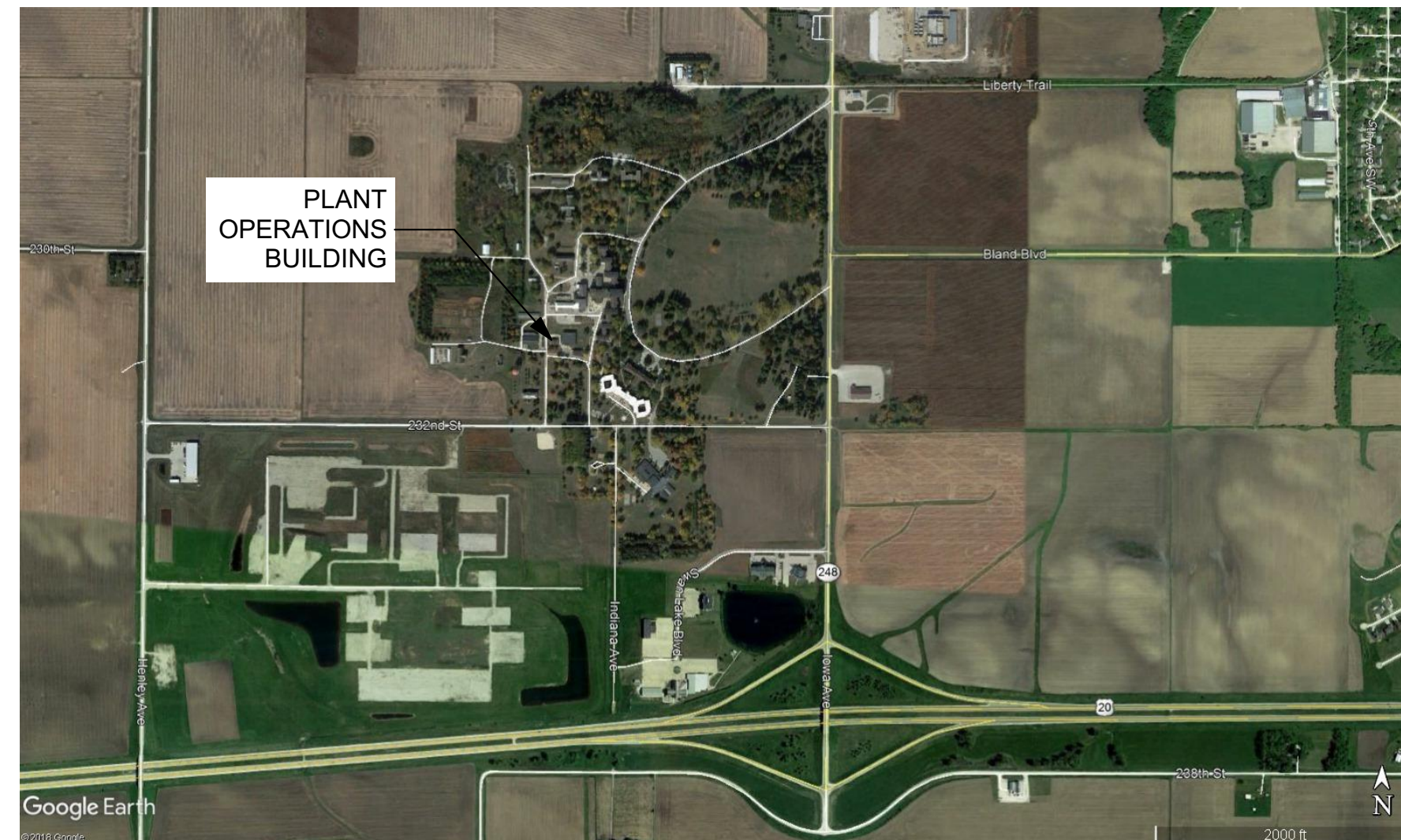
# 9369.00 IMHI Plant Operations Bldg Window Replacement RFP 936900-01

SHEET INDEX	
ID	Name
C-101	COVER SHEET
A-101	FLOORPLANS
A-201	ELEVATION
A-301	WALL SECTION & DETAILS



**9369.00 IMHI Plant Operations  
Bldg Window Replacement**

2277 Iowa Avenue  
Independence, IA 50644



**ABBREVIATIONS**

A.D. AREA DRAIN	DN DOWN	HORIZ. HORIZONTAL	PL LAM PLASTIC LAMINATE	U.L. UNDERWRITERS
ABV. ABOVE	DWG. DRAWING	HT. HEIGHT	QTY. QUANTITY	LABORATORIES
ADA ACCESSIBLE / AMERICANS WITH DISABILITIES ACT	DEPT. DEPARTMENT	INSUL. INSULATION / INSULATING	R. RISER	VEST. VESTIBULE
ADJ. ADJUSTABLE	DBL. DOUBLE	ID. INSIDE DIAMETER	R.W.C. RAIN WATER CONDUCTOR	V.C.T. VINYL COMPOSITION
ADR. AREA OF REFUGE	DIM. DIMENSION	INCAND. INCANDESCENT	REINF. REINFORCING / REINFORCED	TILE
ALUM. ALUMINUM	DR. DOOR	JAN. JANITOR	REQ. REQUIRED	W/ WITH
ALT. ALTERNATE	EXST. EXISTING	JOINT. JOINT	R.O. ROUGH OPENING	W.C. WATER CLOSET
A.F.F. ABOVE FINISHED FLOOR	EQ. EQUAL	LBS. POUNDS	REV. REVISED / REVISION	WD. WOOD
AC. ACOUSTIC / ACOUSTICAL	E.C. ELECTRICAL CONTRACTOR	LAV. LAVATORY	REFL. REFLECTED	& AND
A.F. ALUMINUM FACE	EL. ELEVATION	LAM. LAMINATE	REC. RECESSED	AT AT
APPX. APPROXIMATE / APPROXIMATELY	ELEV. ELEVATOR	L.P. LOW POINT	RAD. RADIUS	± PLUS OR MINUS
BD. BOARD	ELEC. ELECTRIC / ELECTRICAL	MAX. MAXIMUM	S.S. STAINLESS STEEL	° DEGREE
BLK. BLOCK / BLOCKING	EXP. EXPANSION	MFR. MANUFACTURER / MANUFACTURED	ST. STREET	∠ ANGLE
BLDG. BUILDING	EXT. EXTERIOR	MTL. METAL	SIM. SIMILAR	∩ CHANNEL
B.O. BOTTOM OF	F.D. FLOOR DRAIN	MIN. MINIMUM	SQ. SQUARE	# NUMBER
B.O.S. BOTTOM OF STEEL	MIRR. MIRROR	MIR. MIRROR	SAN. SANITARY	□ SQUARE
CAB. CABINET	F.E.C. FIRE EXTINGUISHER	MTO. MOUNTED	SUSP. SUSPENDED	∅ ROUND / DIAMETER
CLG. CEILING	FIN. FINISH / FINISHED	MIS. MISCELLANEOUS	STD. STANDARD	∩/∩L CENTER LINE
CLOS. CLOSET	FLR. FLOOR	MECH. MECHANICAL	SPEC. SPECIFICATION	∩/PL PLATE
C.M. CONSTRUCTION MANAGER	F.O. FACE OF	N.I.C. NOT IN CONTRACT	TEL. TELEPHONE	L U-BAR
CMU CONCRETE MASONRY UNIT	FT. FEET / FOOT	NO. NUMBER	T.O. TOP OF	L LEG-BAR
C.J. CONTROL JOINT	FLUOR. FLUORESCENT	N.T.S. NOT TO SCALE	T.O.F. TOP OF FLOOR	
CONC. CONCRETE	GYP. GYPSUM	O.C. ON CENTER	T.O.W. TOP OF WALL	
CORR. CORRIDOR	GALV. GALVANIZED	O.D. OUTSIDE DIAMETER	TOIL. TOILET	
COL. COLUMN	GA. GAUGE	OPP. OPPOSITE	TYP. TYPICAL	
CONT. CONTINUE / CONTINUOUS	G.C. GENERAL CONTRACTOR	OPG. OPENING	THK. THICK	
CONTR. CONTRACTOR	HR. HOUR	P.C. PLUMBING CONTRACTOR	TMP. TEMPERED	
DIA. DIAMETER	H.P. HIGH POINT	P.F. PANEL FACE	TEMPERED SAFETY	
DTL. DETAIL	HVAC HEAT, VENTILATION, AIR CONDITIONING	PR. PRESSURE TREATED	U.O.N. UNLESS OTHERWISE NOTED	

**GRAPHIC SYMBOLS**

WINDOW MARKER



SKYLIGHT MARKER



DOOR IDENTIFIERS

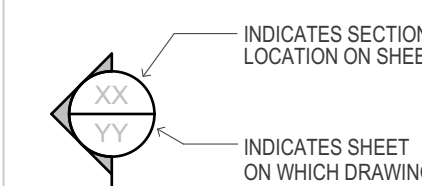


DOOR IDENTIFIER (ELEVATIONS/SECTIONS)  
6" TYPICAL UNLESS OTHERWISE NOTED

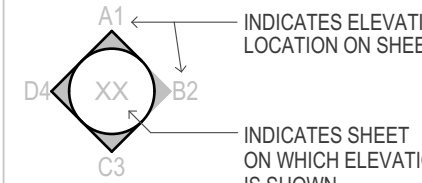
DOOR IDENTIFIER (PLANS)



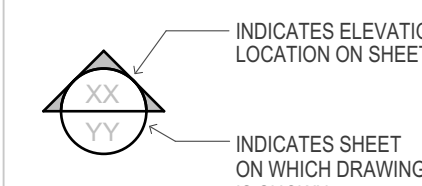
SECTION / DETAIL MARKER



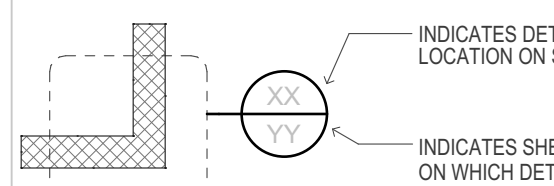
INTERIOR ELEVATION MARKER



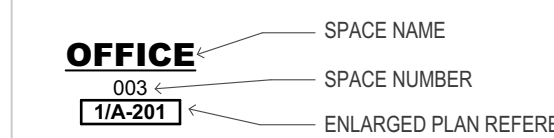
ELEVATION / SECTION MARKER



DETAIL / ENLARGED PLAN MARKER



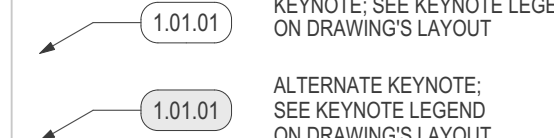
SPACE DESIGNATION



WALL TYPE MARKER



KEYNOTE IDENTIFIER



**VERIFY SCALE**  
BAR IS ONE (1) INCH LONG ON ORIGINAL DRAWING  
0 1  
IF BAR IS NOT ONE (1) INCH LONG, ADJUST SCALE ACCORDINGLY

**ISSUED FOR BIDDING**

PROJECT NO:	#PIn
DATE:	6/4/2024
DRAWN BY:	MSN
COPYRIGHT	

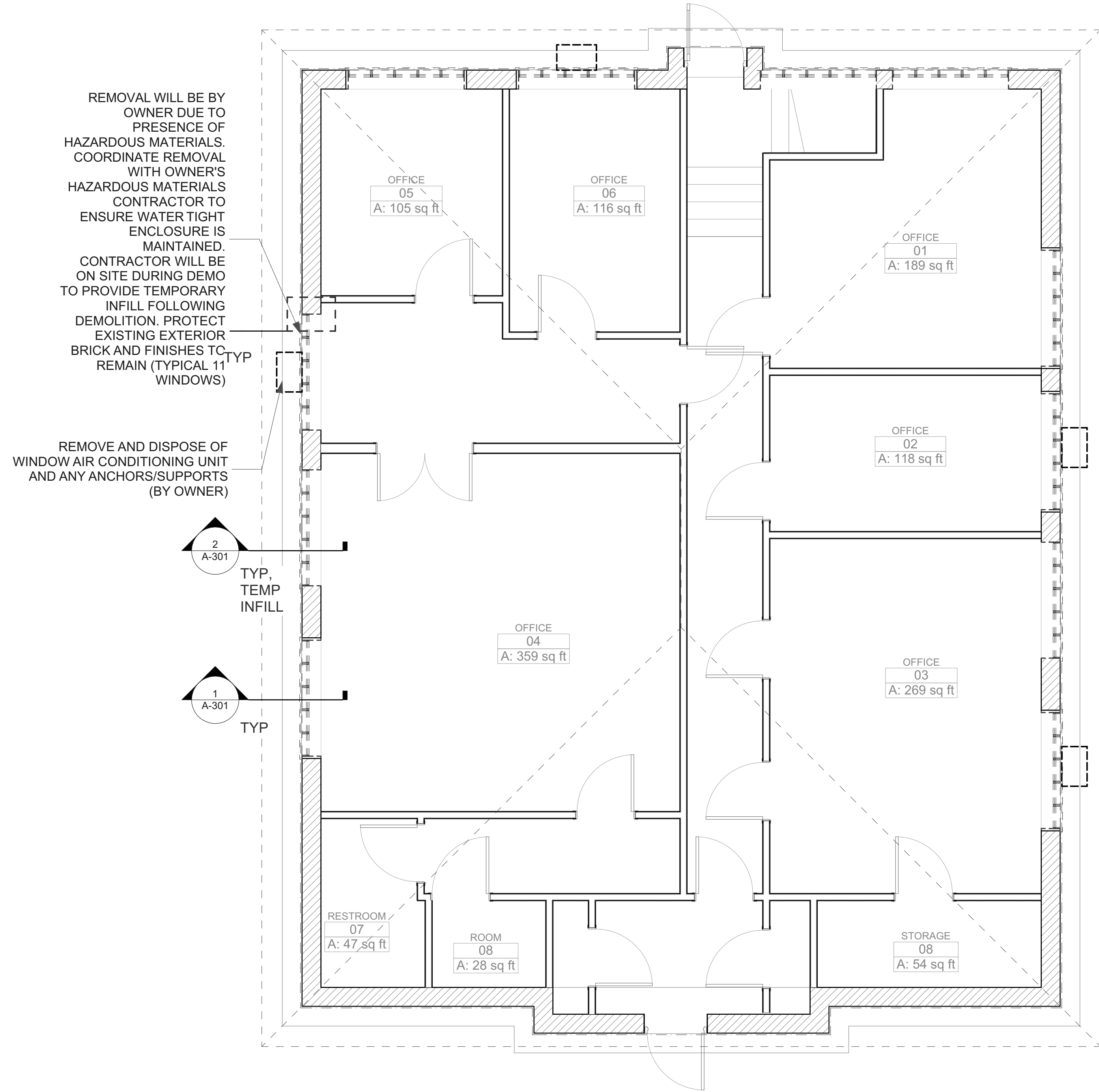
SHEET TITLE
<b>COVER SHEET</b>

**C-101**

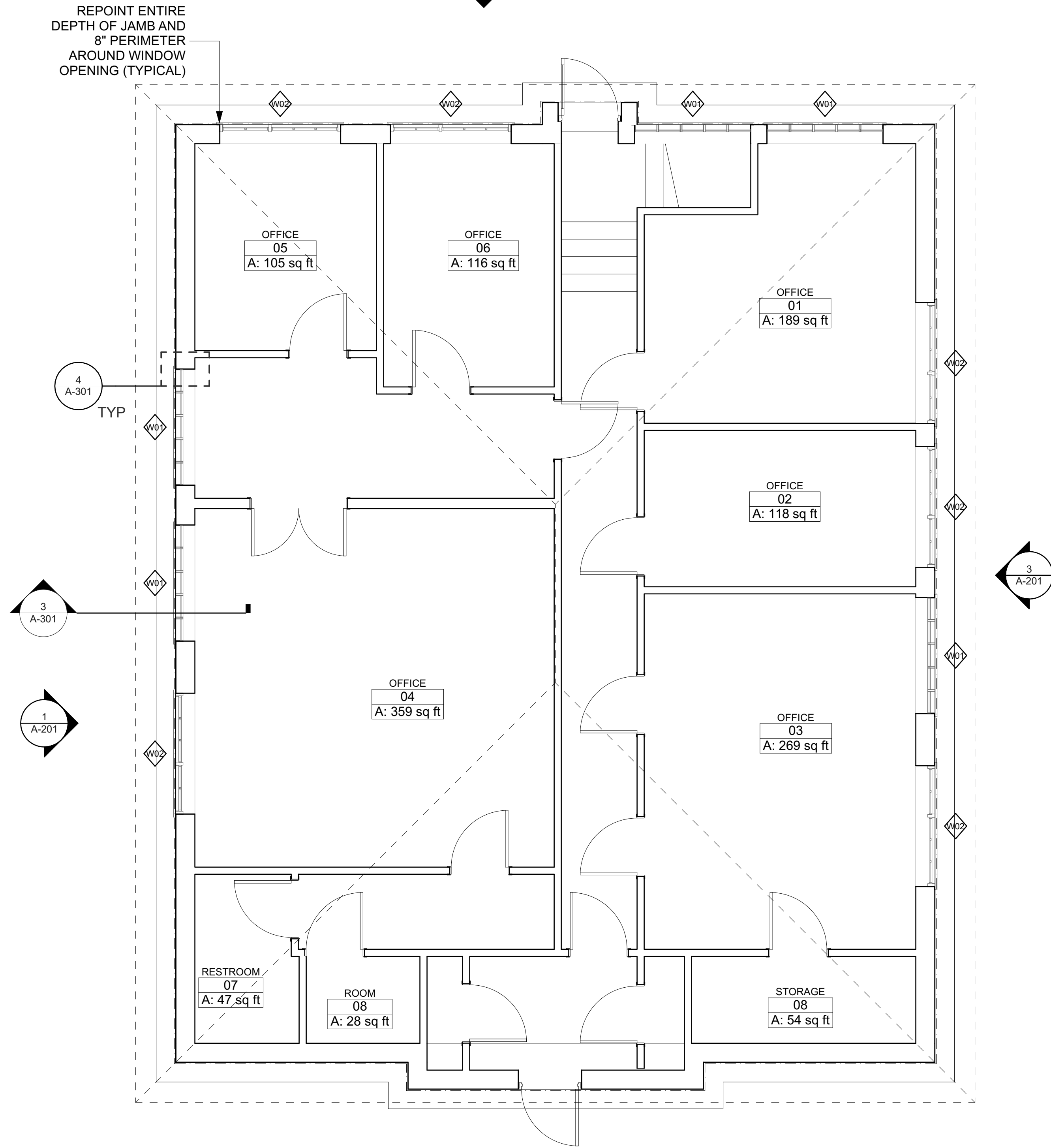
**GENERAL NOTE:**

HAZARDOUS MATERIALS ARE KNOWN TO BE ONSITE AND WILL BE REMOVED BY OWNER'S HAZARDOUS MATERIAL CONTRACTOR. COORDINATE DEMOLITION SCHEDULING AND SEQUENCE WITH OWNER'S HAZARDOUS MATERIALS CONTRACTOR.

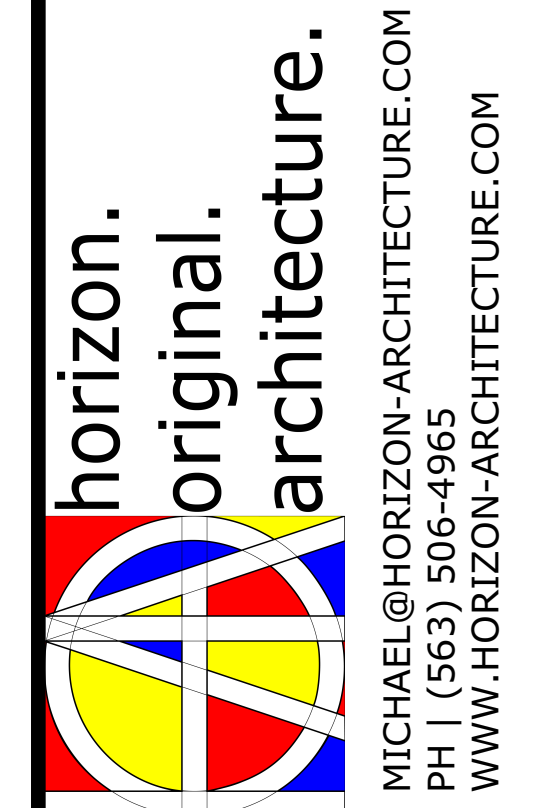
WINDOW SCHEDULE - ALL DIMENSIONS VERIFY IN FIELD				
ID	Quantity	Width (Nominal)	Height (Nominal)	NOTES
W01	5	6'-1"	5'-1/2"	THERMALLY BROKEN FIXED ALUMINUM REPLACEMENT
W02	6	6'-1"	5'-1/2"	THERMALLY BROKEN ALUMINUM REPLACEMENT WITH OPERABLE CASEMENT SECTION



1 1st FLOOR DEMO PLAN  
 SCALE: 1/4" = 1'-0"



2 1st FLOOR  
 SCALE: 1/4" = 1'-0"



**9369.00 IMHI Plant Operations Bldg Window Replacement**

2277 Iowa Avenue  
 Independence, IA 50644

MARK	DATE	DESCRIPTION

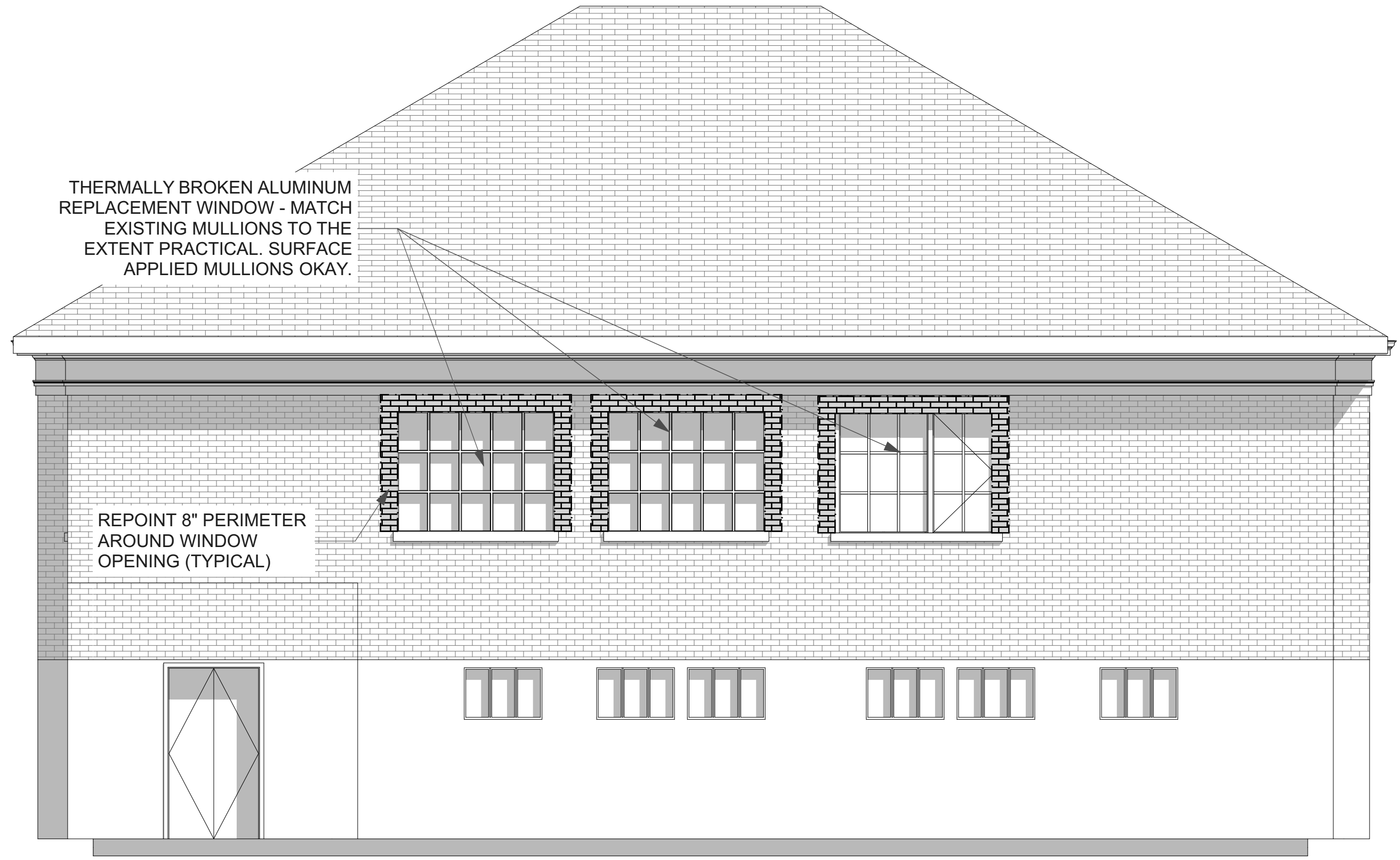
PROJECT NO: #Pln  
 DATE: 6/4/2024  
 DRAWN BY: MSN  
 COPYRIGHT

SHEET TITLE  
**FLOORPLANS**

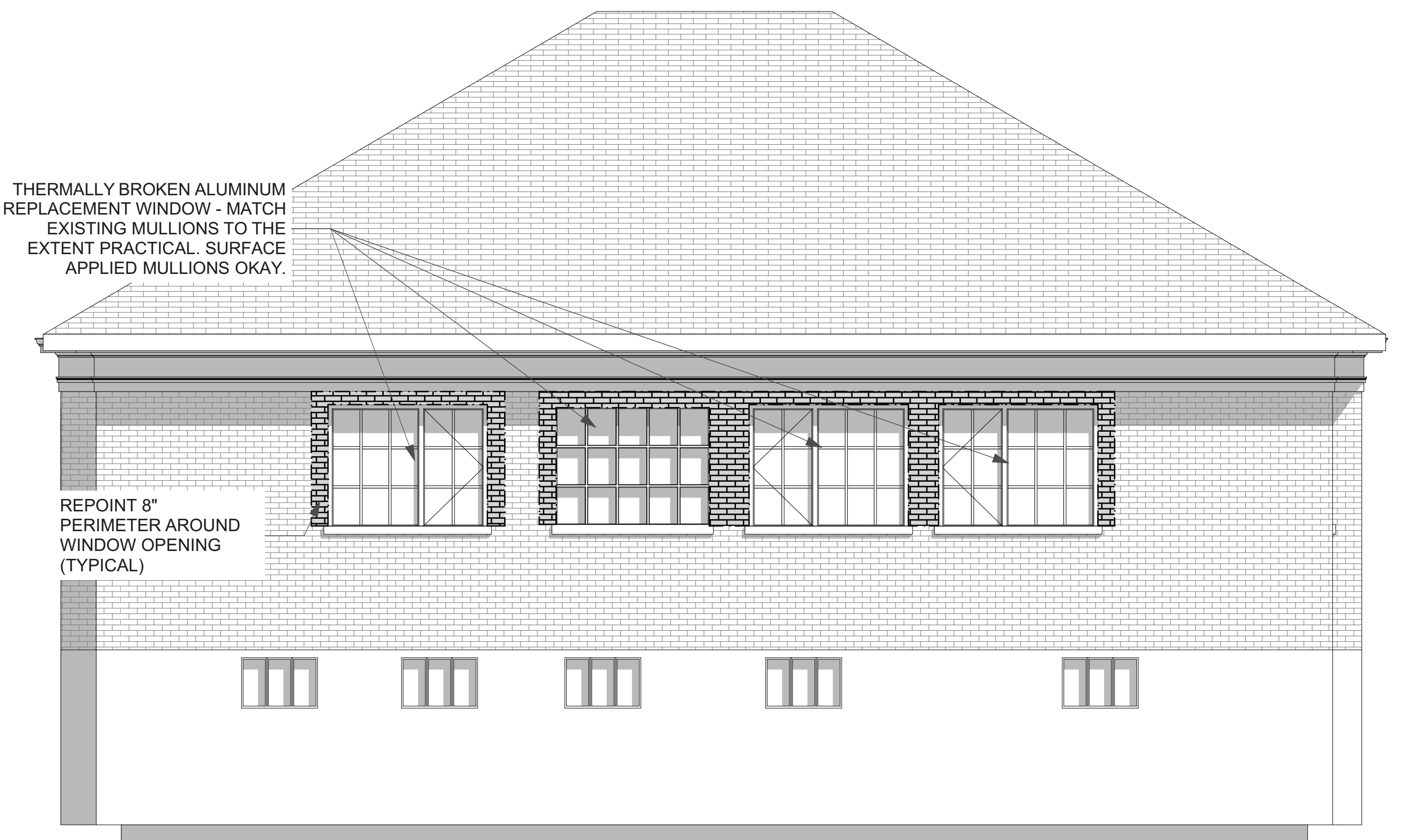
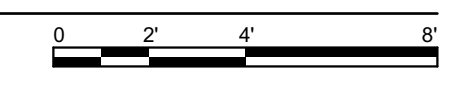
**A-101**

ISSUED FOR BIDDING

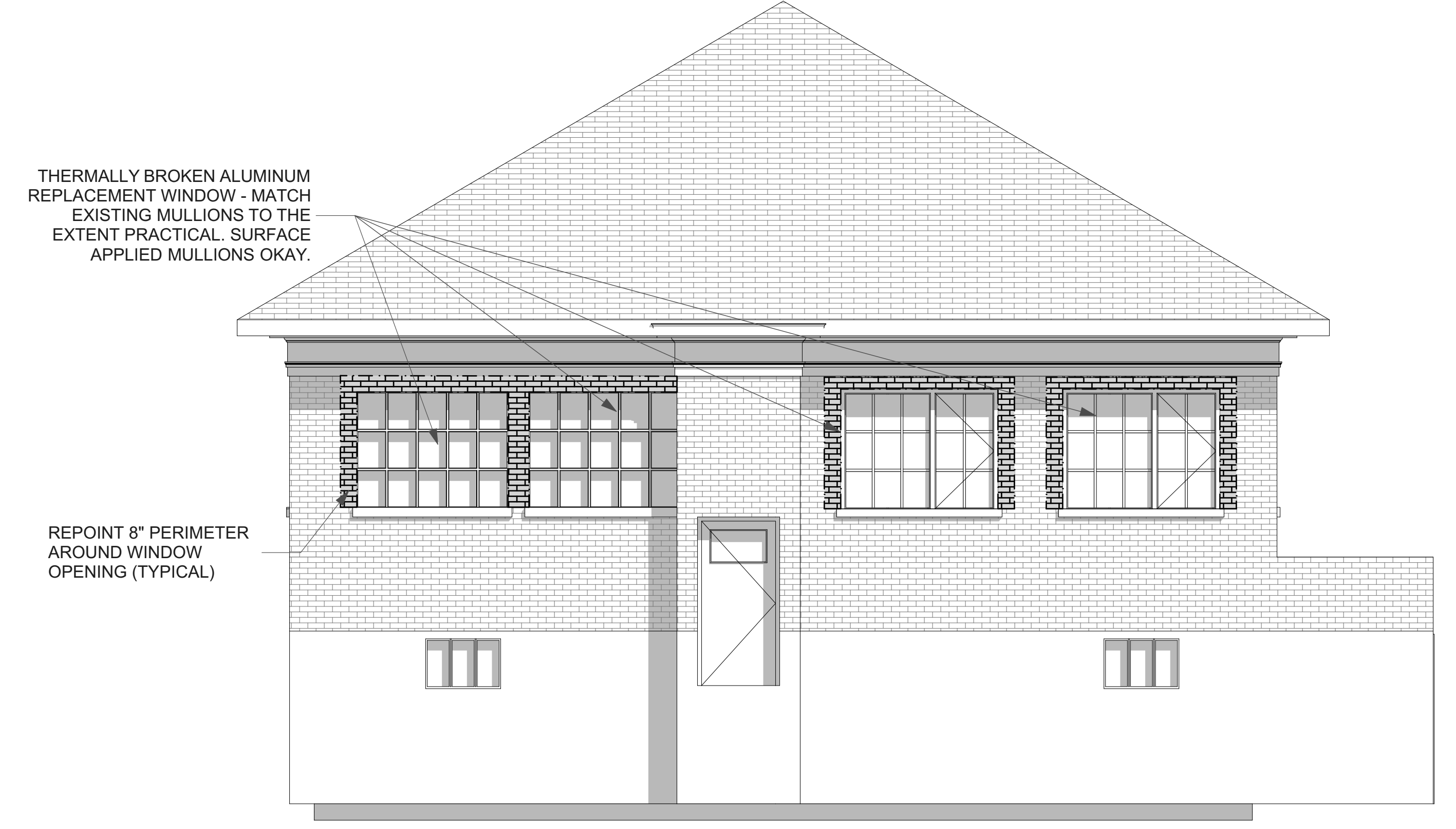
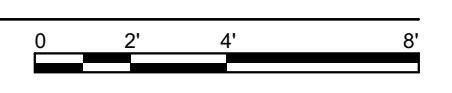
C:\Users\miken\Horizon Architecture\Horizon Architecture - Documents\Projects\General Projects\G24-013 DAS IMHI Plant Ops Windows\1 - Model and Design\IMHI Plant Ops WindowsBKUP.pln



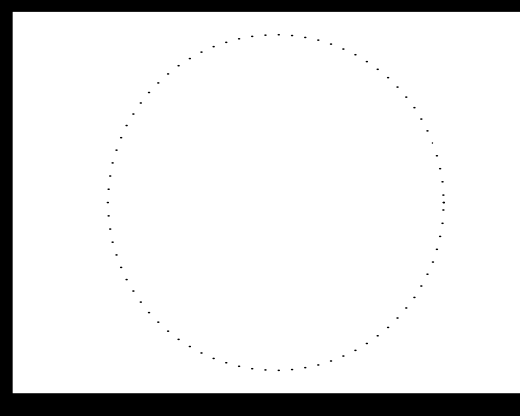
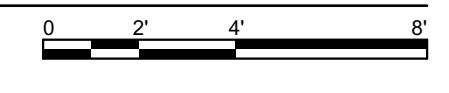
1 NORTH ELEVATION  
SCALE: 1/4" = 1'-0"



3 SOUTH ELEVATION  
SCALE: 1/4" = 1'-0"



2 EAST ELEVATION  
SCALE: 1/4" = 1'-0"



**9369.00 IMHI Plant Operations  
Bldg Window Replacement**

2277 Iowa Avenue  
Independence, IA 50644

MARK	DATE	DESCRIPTION

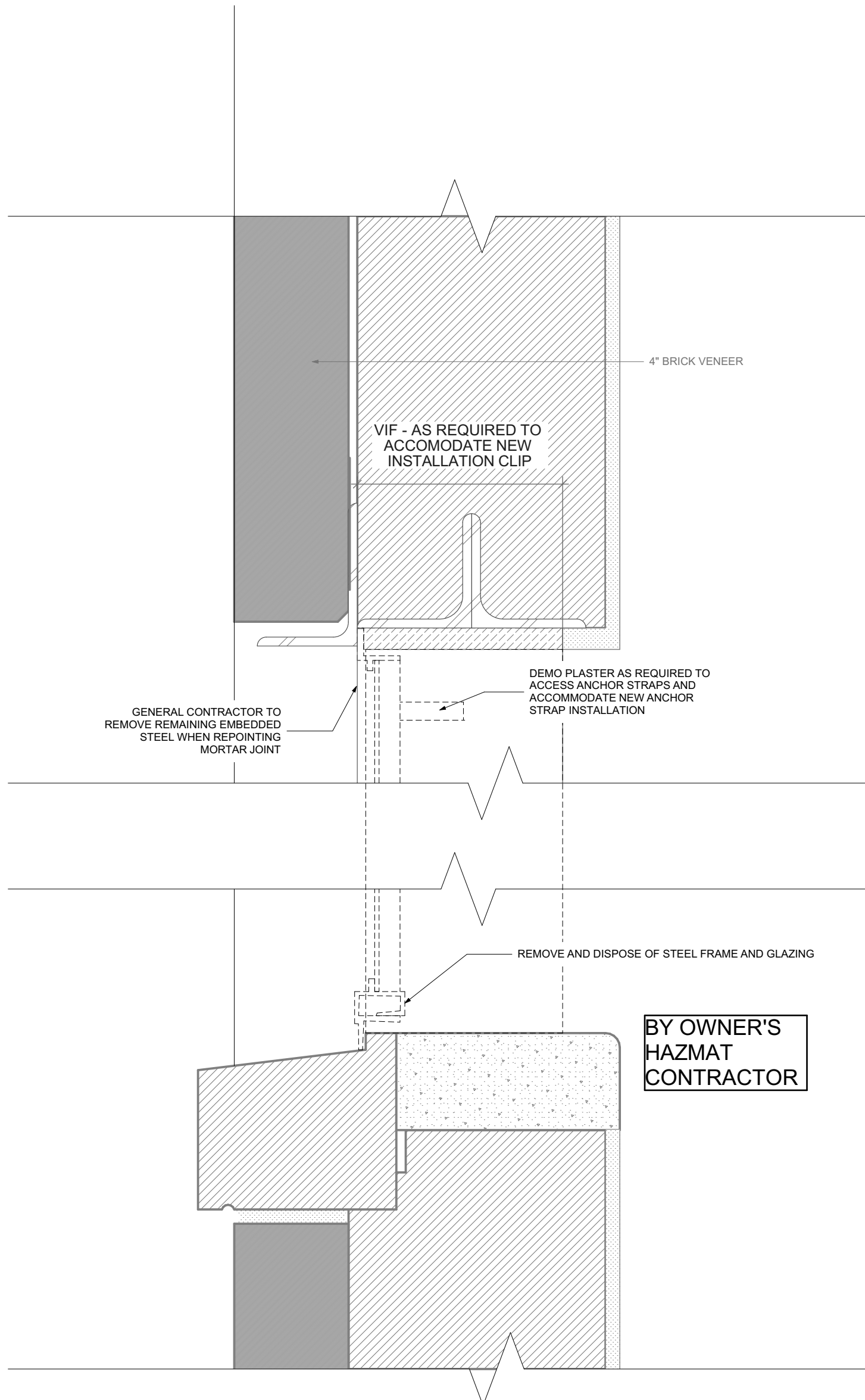
PROJECT NO: #PIn  
DATE: 6/4/2024  
DRAWN BY: MSN  
COPYRIGHT

SHEET TITLE  
**ELEVATION**

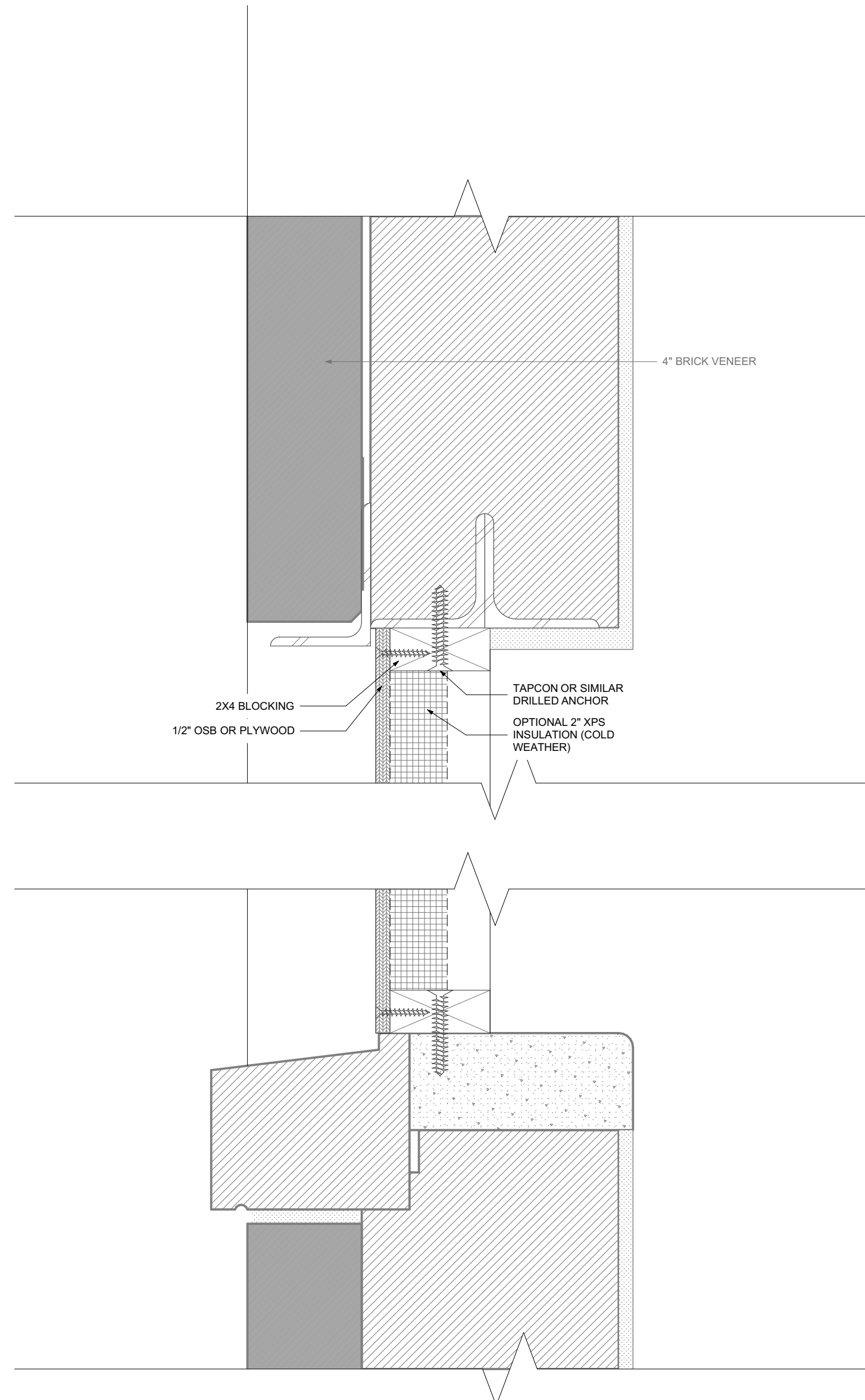
**A-201**

ISSUED FOR BIDDING

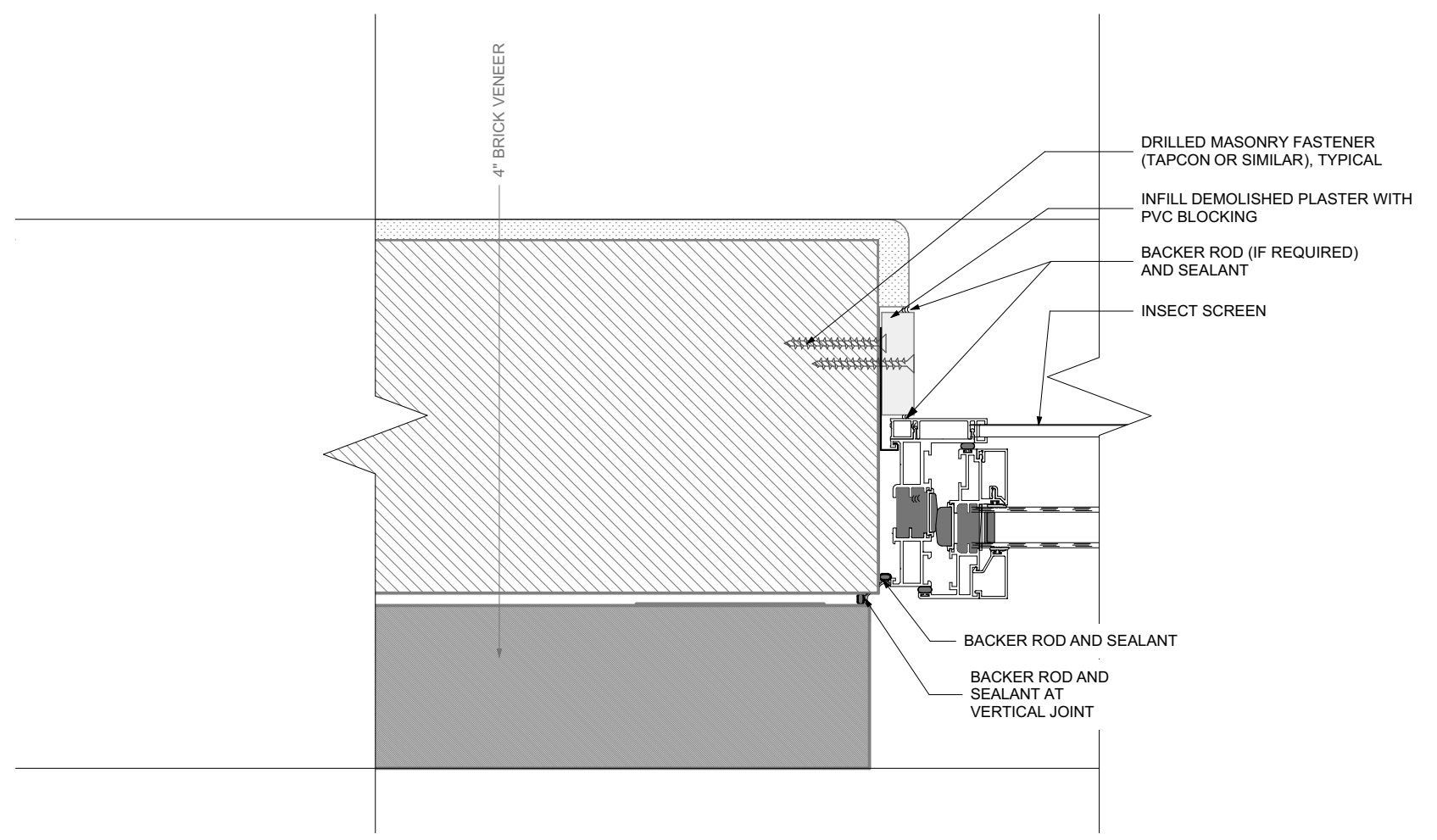
C:\Users\miken\Horizon Architecture\Horizon Architecture - Documents\Projects\General Projects\G24-013 DAS IMHI Plant Ops Windows\1 - Model and Design\IMHI Plant Ops WindowsBKUP.pln



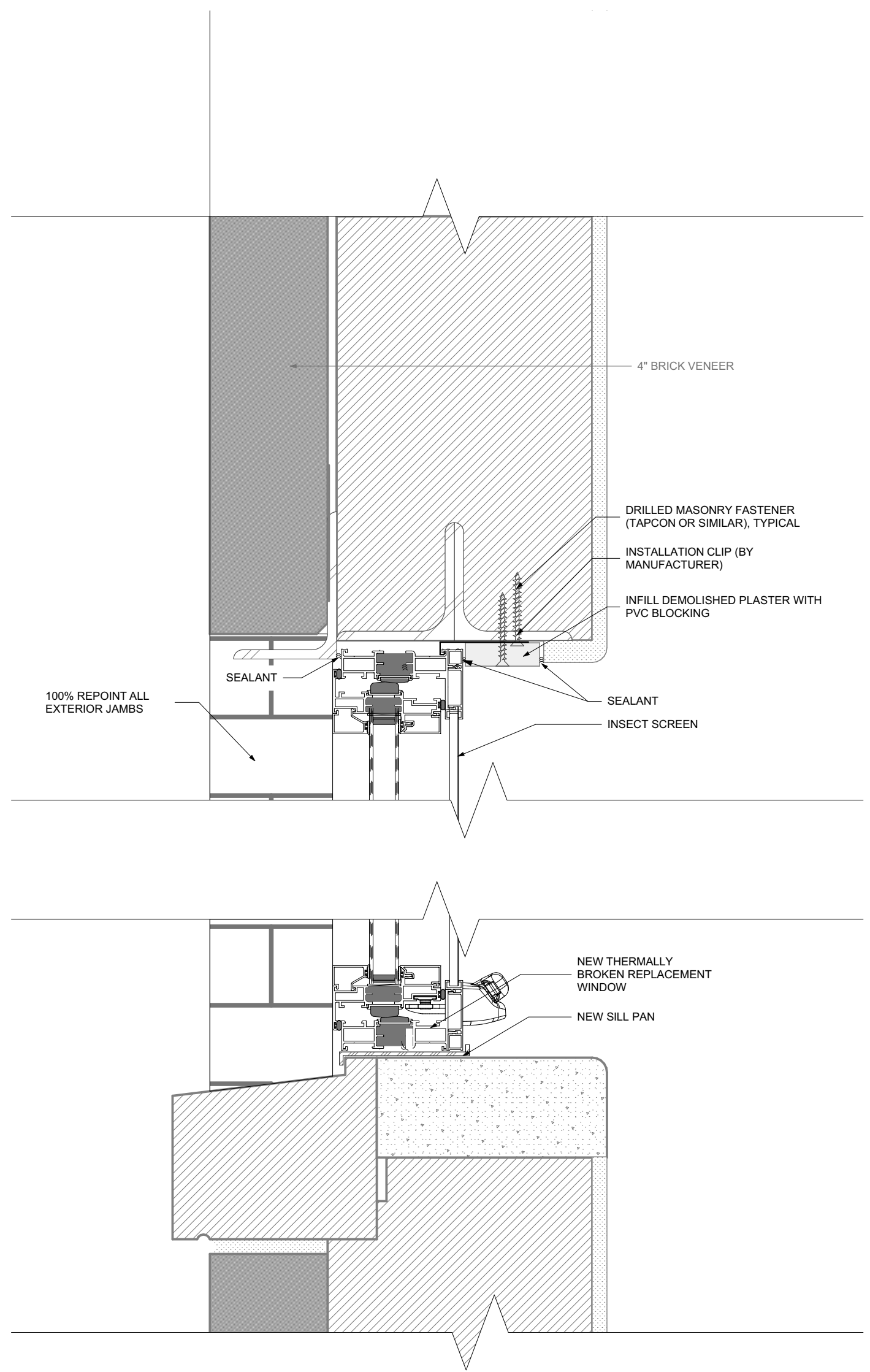
**1 DEMOLITION SECTION**  
SCALE: 3" = 1'-0"  
0 3" 6" 9"



**2 TEMPORARY INFILL DETAIL**  
SCALE: 3" = 1'-0"  
0 3" 6" 9"

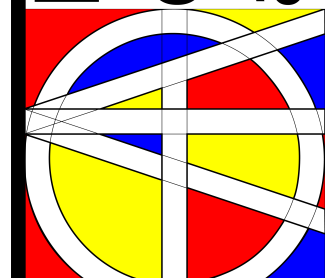


**4 WINDOW JAMB**  
SCALE: 3" = 1'-0"  
0 3" 6" 9"

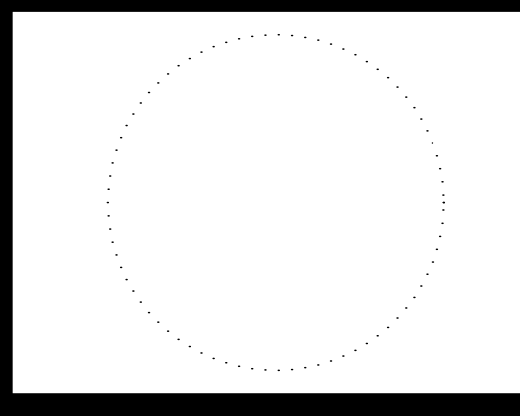


**3 WINDOW DETAIL**  
SCALE: 3" = 1'-0"  
0 3" 6" 9"

horizon.  
original.  
architecture.



MICHAEL@HORIZON-ARCHITECTURE.COM  
PH 1 (563) 506-4965  
WWW.HORIZON-ARCHITECTURE.COM



**9369.00 IMHI Plant Operations  
Bldg Window Replacement**

2277 Iowa Avenue  
Independence, IA 50644

MARK	DATE	DESCRIPTION

PROJECT NO: #PIn  
DATE: 6/4/2024  
DRAWN BY: MSN  
COPYRIGHT

SHEET TITLE  
**WALL SECTION  
& DETAILS**

**A-301**

ISSUED FOR BIDDING