

Addendum 1 for RFP 942200-01

Project Name: DOC ASP Tuckpointing Priorities

RFP#942200-01

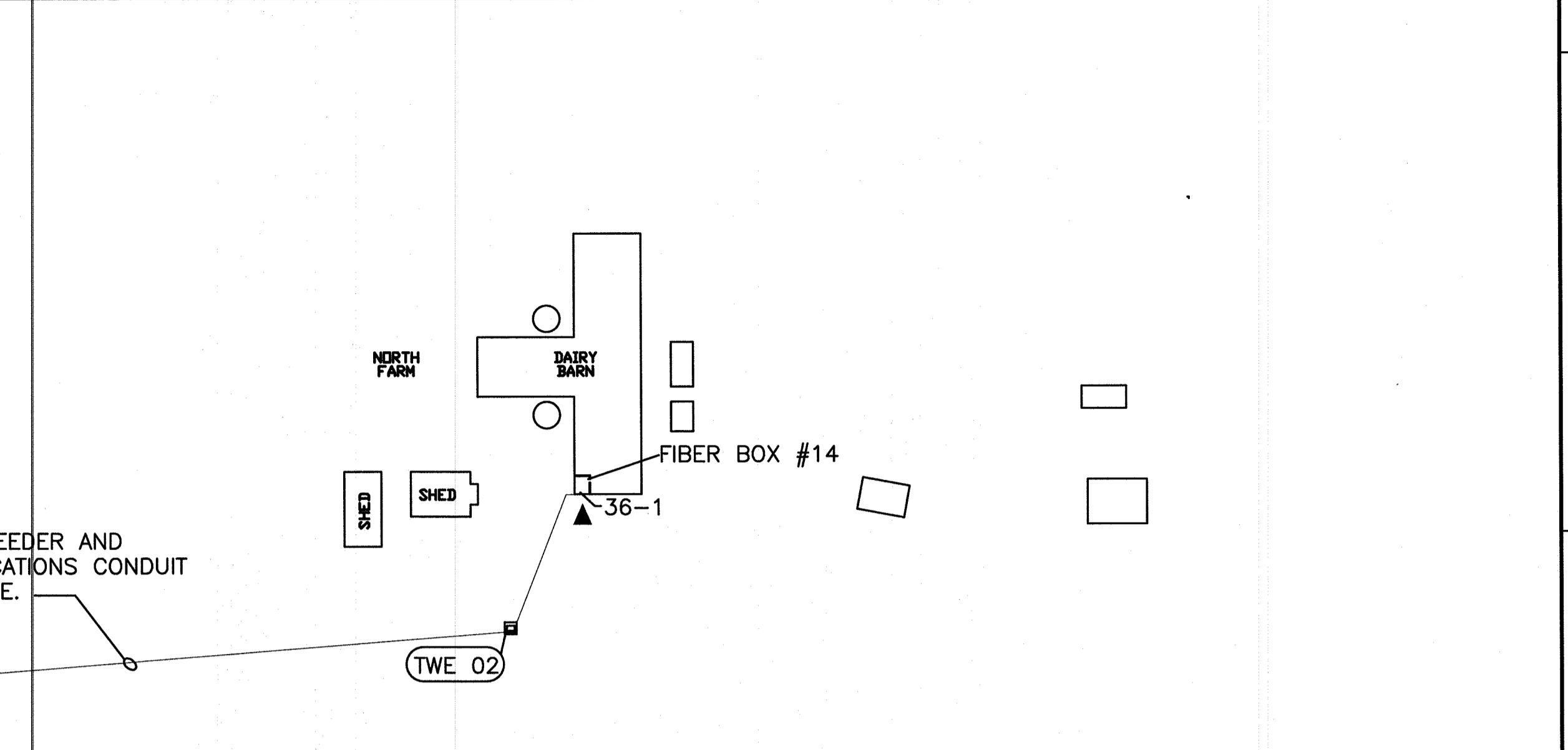
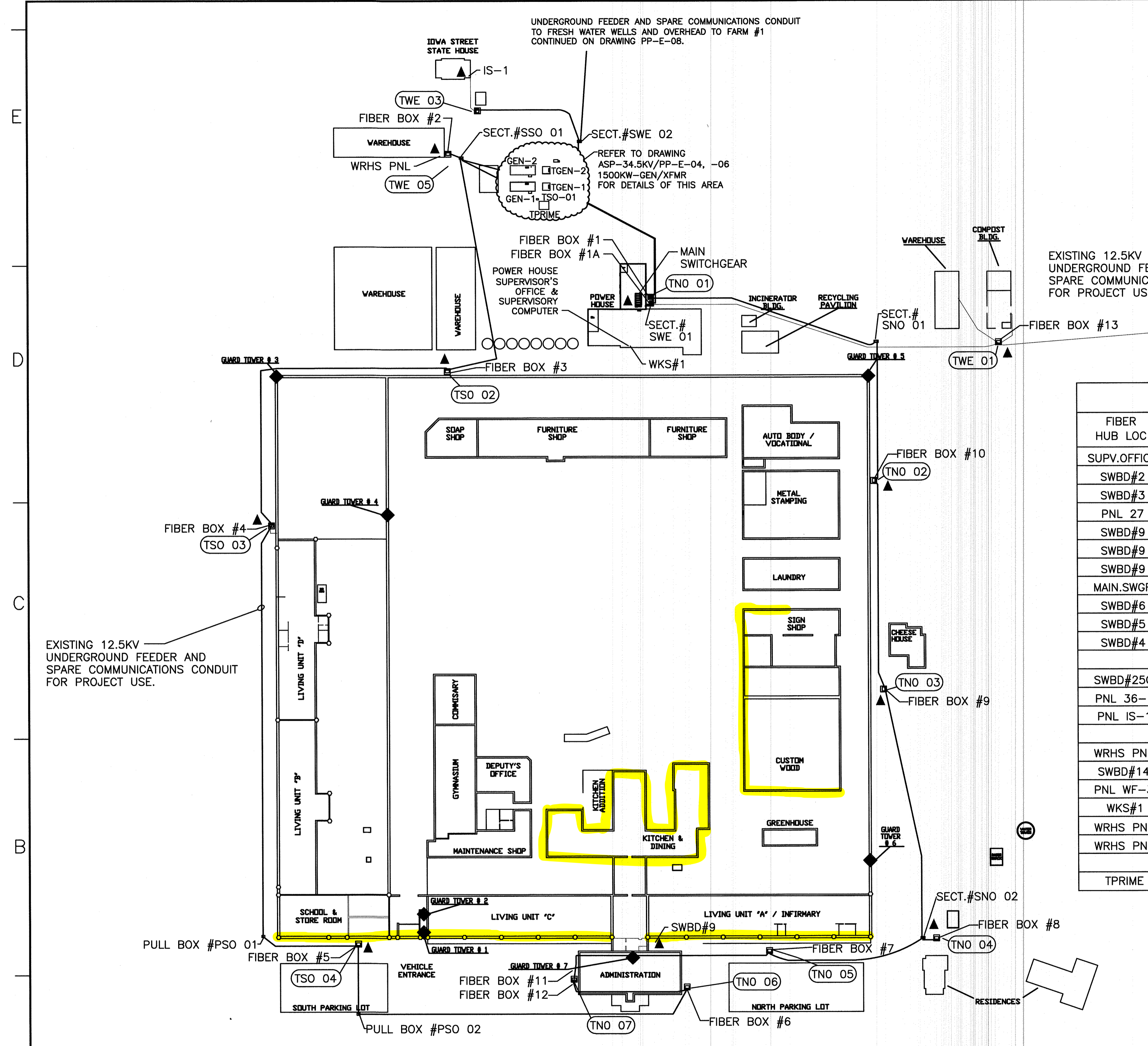
DAS Project #: 9422.00

Date: 12/3/2024

Addendum #01 Questions:

1. Is it possible to give us the location on the building/campus of these Priorities?
 - a. Priorities Item #07 - Secure the bulging stone on the west wall of the old kitchen-dining Hall and repoint all mortar joints on entire building (30,752 sqft). Item #08 - Repoint defective mortar joints on the Clothing, R&D and Custom Wood Building. Item #09 - Repoint all mortar joints and replace some eroded stone on the east wall of the LUA, LUC and LUE (29,750 sqft) Repoint only the defective mortar joints on the west inside walls.
 - b. See attachments for campus map with locations.

END OF ADDENDUM



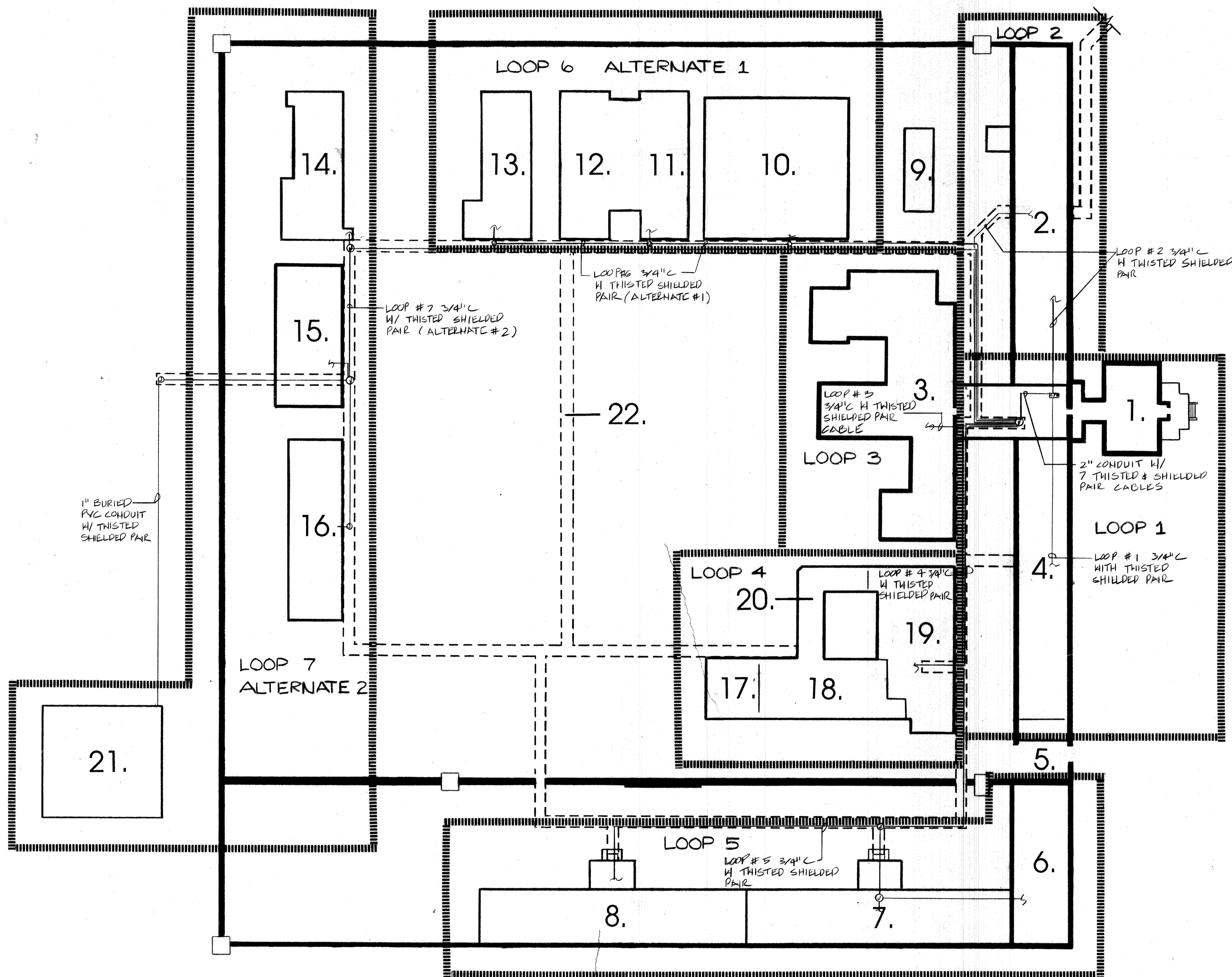
**PRIMARY POWER LOOP
TRANSFORMER LIST & LEGEND**

FIBER HUB LOC	XFRM	PRI-V	SEC-V	KVA	AMPS	LOCATION DRAWINGS	DESCRIPTION
SUPV.OFFICE	TNO 01	12,470/7,200	480/277	2500	2400		POWER HOUSE 480Y/277 SERVICE
SWBD#2	TNO 02	12,470/7,200	208/120	750	2000	PP-E-60,-74	AUTO-BODY, WELDING & LAUNDRY
SWBD#3	TNO 03	12,470/7,200	208/120	750	2000	PP-E-61,-75	CHEESEHOUSE, SIGN SHOP, CUSTOM WOOD
PNL 27	TNO 04	7,200	240/120	50	140	PP-E-62,-76	WARDENS HOUSE & STATE RESIDENCE - NORTH
SWBD#9	TNO 05	12,470/7,200	208/120	1000	3000	PP-E-62,-76	LUA & INFIRMARY
SWBD#9	TNO 06	12,470/7,200	208/120	1000	3000	PP-E-56,-70	ADMINISTRATION & OLD DINING
SWBD#9	TNO 07	12,470/7,200	208/120	1000	3000	PP-E-66,-79	NEW KITCHEN
MAIN.SWGR	TSO 01	7,200	240/120	25	69		GENERATOR CONTROL POWER
SWBD#6	TSO 02	12,470/7,200	208/120	500	1390	PP-E-59,-73	INDUSTRIES BLDG. 17 & 18, WEST WAREHOUSE
SWBD#5	TSO 03	12,470/7,200	208/120	500	1390	PP-E-58,-72	LUD
SWBD#4	TSO 04	12,470/7,200	208/120	1000	3000	PP-E-57,-71,-71A	HOBBYCRAFT, MAINTENANCE & LUB
SWBD#25C	TWE 01	12,470/7,200	208/120	150	415	PP-E-63,-77	WAREHOUSE & COMPOST BLDG.
PNL 36-1	TWE 02	12,470/7,200	208/120	750	2000	PP-E-63,-78	DAIRY BARN (NORTH)
PNL IS-1	TWE 03	7,200	240/120	25	69	PP-E-63,-78	STATE HOUSE - WEST
	TWE 04	12,470/7,200	208/120	75	208	PP-E-64	PUMPHOUSE # 1 & 2 (FOR REFERENCE ONLY)
WRHS PNL	TWE 05	12,470/7,200	208/120	75	208	PP-E-63,-78	NEW WAREHOUSE
SWBD#14	TWE 06	12,470/7,200	208/120	150	415	PP-E-65,-78A	FARM # 1 (WEST)
PNL WF-3	TWE 07	7,200	240/120	10	28	PP-E-65,-78A	FARM # 1 (WEST) - FARM HOUSE POLE MOUNT
WKS#1							THIS SHEET POWER HOUSE SUPERVISOR'S OFFICE
WRHS PNL	TGEN 01	12,470/7,200	480/277	2000	2400	PP-E-06	STANDBY GENERATOR # 1
WRHS PNL	TGEN 02	12,470/7,200	480/277	2000	2400	PP-E-06	STANDBY GENERATOR # 2
TPRIME	TPRIME	34,500	12,470/7,200	2500		PP-E-06	PRIMARY UTILITY INCOMING POWER

COMMUNICATIONS ETHERNET LAN NOTES:
 1. PROVIDE AND INSTALL FIBER-OPTIC COMMUNICATIONS LAN CONNECTING POWER METERS AT ALL LOCATIONS LISTED ABOVE. FACILITY LAN TO ALSO BE CONNECTED TO MAIN POWER-HOUSE POWER METER AND COMPUTER IN MAINTENANCE SUPERVISORS OFFICE. REFER TO SPECIFICATIONS SECTION 16980 FOR REQUIREMENTS.
 2. ▲ FIBER HUB LOCATED IN NEW SWITCHGEAR.

REV	D/M/Y	REVISION	DRN	CHK	APP	APP	APP	ISS	D/M/Y	APP	ISSUED FOR	REF	NUMBER	TITLE	REFERENCES
4	01/05/11	AS RECORDED													
3	11/01/08	ISSUE FOR CLIENT REVIEW													
2	09/01/08	AS-RECORDED													
1	07/01/06	ORIGINAL ISSUE													

APPROVED FOR CONSTRUCTION		DL		TGR		CLIENT PROJECT MGR. DEPARTMENT MGR. PROJECT MGR.		AREA		STATE OF IOWA 2065.01			
PROJECT PHASE		PROJECT NO. 158924		ACTIVITY NO.		PACKAGE CODE		SUBJECT		CLIENT DWG. NO. PP-E-07			
SCALE NOT TO SCALE		BY		D/M/Y 06/09/03		DRN. MRA		SUBJECT		DRAWING NO. PP-E-07		REV. 4	
								ASP-15KV PRI. DIST. SYSTEM LAYOUT-MAIN ANAMOSA STATE PENITENTIARY ANAMOSA ELECTRICAL UPGRADE				CADD FILE ADDRESS ANAMOSA/ANAM_PP-E-07	



DIRECTORY

1. ADMINISTRATION BUILDING
2. NORTH HOUSE
3. KITCHEN - DINING HALL
4. LIVING UNIT C
5. VEHICLE ENTRANCE
6. VOCATIONAL BUILDING
7. LIVING UNIT B
8. LIVING UNIT D
9. GREENHOUSE
10. METAL STAMPING
11. WOOD SHOP
12. SIGN FABRICATION
13. LAUNDRY
14. MOTOR SCHOOL
15. NEW FURNITURE
16. OLD FURNITURE
17. COMMISSARY
18. GYMNASIUM
19. MAINTENANCE BUILDING
20. DEPUTIES OFFICE
21. WAREHOUSE
22. UTILITY TUNNELS

1. ROUTE MAIN LOOP WIRING AND CONDUIT IN UTILITY TUNNELS GENERALLY AS SHOWN ON DETAILS ON DRAWING 39. ALL BUILDINGS EXCEPT BUILDING 21 HAVE TUNNEL ACCESS. ROUTE 1\"/>

NOTE: ROUTING OF LOOP CONDUITS IS DIAGRAMATIC TO SHOW GENERAL LAYOUT ONLY CONTRACTOR SHALL FIELD VERIFY CONDUIT ROUTING & TUNNEL ACCESS.

AS BUILT 5/10/90

FIRE ALARM SYSTEM IOWA MENS REFORMATORY ANAMOSA, IOWA	
SITE PLAN	6-12-89
SCALE: 1\"/>	
GENE GESSNER INC IOWA CITY, IOWA 519/351-1349	
1	