

# **Addendum 1 for RFB909800-01**

Project Name: NCCF Unit C Stucco Repair  
DAS RFB #: 909800-01  
DAS Project #: 9098.00  
Date: 06/30/2020

**Bids Due: July 9, 2020 at 2:00pm**

## **BID SUBMITTAL, OPENING, PRE-BID MEETING MINUTES, TERRACON TEST REPORT, AND PHOTOS**

Due to the circumstances surrounding COVID-19, the State is amending the bid submittal and public opening procedures of the above RFB. Also attached are the pre-bid meeting minutes, photos we have taken, and the Terracon asbestos test report.

### **BID SUBMITTAL**

The Bid shall be submitted to the Issuing Officer through the Iowa VSS electronic bidding system. The link to VSS is: [https://vss.iowa.gov/webapp/VSS\\_ON/AltSelfService](https://vss.iowa.gov/webapp/VSS_ON/AltSelfService).

VSS should be accessed via Internet Explorer. Bidder will need to register regardless of whether it has already done business with the State of Iowa. Click the Register button on the left side of the VSS screen to start the registration process. If you have any issues with registration, please call the helpdesk at 515-281-6614. It is recommended that Bidders complete the registration process today to ensure Bids can be submitted on the due date. Bids should be split into several files if the bid exceeds the 10MB threshold. There is no limit on the number of files which can be uploaded. Please make sure the electronic documents submitted contain all of the required signatures. Bidders without access to electronic means should contact the issuing officer at 515-725-2893.

### **PUBLIC OPENING**

The public opening will be held via conference call only. The call details are below.

Call time: 3:00 pm on July 9, 2020  
Call number: 617-675-4444  
Pin: 633 331 279 6728

### **PRE-BID MEETING MINUTES**

Attached.

### **TERRACON TEST REPORT**

Attached.

### **PHOTOS**

Attached.

**END OF ADDENDUM 1**



# Meeting #1

State of Iowa - Department of Administrative Services  
109 SE 13th St.  
Des Moines, Iowa 50319  
Phone: (515) 281-7260

**Project:** 9098.00 - DOC NCCF Unit C Stucco Repair  
313 Lanedale  
Rockwell City, Iowa 50579  
Phone: 7122977521

## Construction RFB Pre-Bid Minutes

**MEETING DATE:** 06/25/2020 **MEETING TIME:** 11:00 AM - 12:00 PM Central Time (US & Canada)

**MEETING LOCATION:** Webex

**OVERVIEW:**  
Construction RFB pre-bid meeting to discuss project scope, schedule, and bidding items.

**NOTES:**

**ATTACHMENTS:**

**ATTENDEES:**

Name	Company	Phone Number	Email	Attendance
Matt Bednarik	North Central Correctional Facility	Tel: (712) 297-7521	matthew.bednarik@iowa.gov	Present
Troy Hammen	North Central Correctional Facility	Tel: (712) 297-7521	troy.hammen@iowa.gov	
Robert Johnson	North Central Correctional Facility	Tel: (515) 574-4711	robert.a.johnson@iowa.gov	
Scott Kelly	North Central Correctional Facility	Tel: (712) 297-7521	scott.kelly@iowa.gov	
Nick Aldrich	Ryan Companies	Tel: (515) 309-8529	nick.aldrich@ryancompanies.com	Present
Michael Fear	Ryan Companies	Tel: (515) 412-5502	michael.fear@ryancompanies.com	Present
Mark Nelson	Ryan Companies	Tel: (515) 309-8538	mark.nelson@ryancompanies.com	Present
Craig Price	Ryan Companies	Tel:	craig.price@ryancompanies.com	
Andrew Pritchard	Shive Hattery Inc.	Tel: (515) 223-8104	apritchard@shive-hattery.com	Present
Brad Tonyan	State of Iowa - Department of Administrative Services	Tel: 515-360-7718	brad.tonyan@iowa.gov	Present

### Introductions

No	Meeting Origin	Title	Assignment	Due Date	Priority	Status
1.1	1	Project Team				Open
	<b>Description:</b> North Central Correctional Facility					

These meeting minutes are believed to be an accurate reflection of those items discussed and the conclusions that were reached during the referenced meeting.

Please contact State of Iowa - Department of Administrative Services if there are any discrepancies or questions with the content of these minutes.



# Meeting #1

- Tim Motl, Maintenance Supervisor, [Timothy.Motl@iowa.gov](mailto:Timothy.Motl@iowa.gov) Phone: 712-297-7521 (point of contact for Contractors)
- Matthew Bednarik, Electrician, [Matthew.Bednarik@iowa.gov](mailto:Matthew.Bednarik@iowa.gov) Phone: 712-297-7521
- Troy Hammen, Security Director, [Troy.Hammen@iowa.gov](mailto:Troy.Hammen@iowa.gov) Phone: 712-297-7521
- Robert Johnson, Warden, [Robert.A.Johnson@iowa.gov](mailto:Robert.A.Johnson@iowa.gov) Phone: 515-574-4711
- Scott Kelly, Trades Leader, [Scott.Kelly@iowa.gov](mailto:Scott.Kelly@iowa.gov) Phone: 712-297-7521

Department of Administration Services (DAS)

- Brad Tonyan, Owner Representative [Brad.Tonyan@iowa.gov](mailto:Brad.Tonyan@iowa.gov) Cell: 515-360-7718

Shive-Hattery

- Andrew Pritchard, Architect, [apritchard@shive-hattery.com](mailto:apritchard@shive-hattery.com) Cell: 515-689-1225

Ryan Companies

- Craig Price, Superintendent
- Michael Fear, Project Engineer [Michael.Fear@ryancompanies.com](mailto:Michael.Fear@ryancompanies.com) 515-783-8874
- Nick Aldrich, Senior Project Manager [Nick.Aldrich@ryancompanies.com](mailto:Nick.Aldrich@ryancompanies.com) 515-491-4015

## Bidding Information

No	Meeting Origin	Title	Assignment	Due Date	Priority	Status
2.1	1	Bidding Schedule				Open
		<b>Description:</b> 6/25 - Pre-Bid Meeting 6/30 - Contractor questions due (send questions to <a href="mailto:construction.procurement@iowa.gov">construction.procurement@iowa.gov</a> ) 7/9 - Bids due at 2:00 pm electronically <b>7/9 - Virtual Bid opening at 3:00 pm</b>				
2.2	1	Bid Submittal				Open
		<b>Description:</b> Documents to include: 1. Bid Form 2. Targeted Small Business Form 3. Non-Discrimination Form 4. Bid Bond				
2.3	1	Pre-Site Visits				Open
		<b>Description:</b> Review site visiting procedures with Tim/NCCF Staff - Background check required prior to being on site				

## Project Scope and Schedule

No	Meeting Origin	Title	Assignment	Due Date	Priority	Status
3.1	1	Scope (and Photo Review)				Open
		<b>Description:</b> - Stucco repairs at Unit C in North Central Correctional Facility. Some areas will be full demolition and replacement, and some areas will be patching cracks.				
		<b>Official Documented Meeting Minutes:</b> - Scaffold cannot be used, lifts will need to be taken outside of the gates daily.				
3.2	1	Schedule				Open

These meeting minutes are believed to be an accurate reflection of those items discussed and the conclusions that were reached during the referenced meeting.

Please contact State of Iowa - Department of Administrative Services if there are any discrepancies or questions with the content of these minutes.



# Meeting #1

	<b>Description:</b> Reference attached Schedule: <ul style="list-style-type: none"> <li>• Construction Start: 8-4-2020</li> <li>• Construction Finish: 10-1-2020</li> </ul> Owner/CMA will provide coordination of Hazardous Material Abatement (Asbestos). Abatement and Testing by Owner; Terracon test will be issued when complete.					
	<b>Official Documented Meeting Minutes:</b> - Contractor is not required to use full schedule length					
3.3	1	COVID-19 Protocol				Open
	<b>Description:</b> <ul style="list-style-type: none"> <li>• Contractors can not have contact with any known COVID infection within 14 days</li> <li>• Temperature reading prior to entry</li> <li>• Wear a mask if social distancing can not be maintained, and when working indoors</li> <li>• NOTE: Admittance is at the Facility's discretion.</li> </ul>					

Questions						
No	Meeting Origin	Title	Assignment	Due Date	Priority	Status
4.1	1	Questions				Open
	<b>Description:</b> Open Discussion for any questions.  NOTE: All questions discussed within the pre-bid meeting are not binding. For official response questions must be sent to Procurement.					
	<b>Official Documented Meeting Minutes:</b> <ul style="list-style-type: none"> <li>- Brick allowance of \$5,000 is to be included as part of submitted bids, per the project specifications.</li> <li>- Budget for project is \$55,000, including alternates</li> <li>- Prime contractor must provide portable toilets for their and their subcontractors use. Portable toilets must be placed outside of the secured areas.</li> </ul>					

These meeting minutes are believed to be an accurate reflection of those items discussed and the conclusions that were reached during the referenced meeting.

Please contact State of Iowa - Department of Administrative Services if there are any discrepancies or questions with the content of these minutes.

# Limited Asbestos Survey Report

North Central Correctional Facility

Unit C & Unit D

313 Lanedale

Rockwell City, Iowa

June 30, 2020

Terracon Project No. C1207031

**Prepared for:**

Iowa Department of Administrative Services

109 S.E. 13<sup>th</sup> Street

Des Moines, Iowa

**Prepared by:**

Terracon Consultants, Inc.

Sioux City, Iowa

[terracon.com](http://terracon.com)

**Terracon**

Environmental



Facilities



Geotechnical



Materials

June 30, 2020

Mr. Brad Tonyan  
Iowa Department of Administrative Services  
109 S.E. 13<sup>th</sup> Street  
Des Moines, IA 50319

**Re: Limited Asbestos Survey Report**

North Central Correctional Facility  
Unit C & Unit D  
313 Lanedale  
Rockwell City, Iowa  
Terracon Project No. C1207031

Dear Mr. Tonyan:

The purpose of this report is to present the results of a limited asbestos survey at the North Central Correctional Facility located at 313 Lanedale, Rockwell City, Iowa. The limited survey was conducted on June 12, 2020. We understand the limited survey was requested to survey the exterior of Units C & D for asbestos-containing materials (ACMs) prior to proposed renovation activities. Terracon did not inspect or collect samples from the interior of the buildings and roofs. The following table summarizes the asbestos findings:

**Asbestos-Containing Materials (ACM)**

Material Description	Material Location
No Asbestos Containing Materials	

Please refer to the attached report for details. Identified ACMs are listed in Section 4.0 of the attached report.

**Limited Asbestos Survey Report**

North Central Correctional Facility ■ Units C & D ■ Rockwell City, Iowa

June 30, 2020 ■ Terracon Project No. C1207031



Terracon Consultants, Inc. (Terracon) appreciates the opportunity to provide these services to Iowa Department of Administrative Services. Please call us at (402) 330-2202 if you have questions regarding this report.

Sincerely,

**Terracon Consultants, Inc.**

A handwritten signature in black ink, appearing to read "Aaron Girard".

Aaron Girard  
Environmental Senior Staff Scientist

Jon Fannon  
Environmental Group Manager

Distribution: Addressee (pdf via e-mail)

## TABLE OF CONTENTS

	<u>Page</u>
<b>1.0 INTRODUCTION .....</b>	<b>1</b>
1.1 Project Objective.....	1
<b>2.0 ASBESTOS FIELD ACTIVITIES .....</b>	<b>2</b>
2.1 Visual Assessment.....	2
2.2 Physical Assessment .....	2
2.3 Sample Collection .....	2
2.4 Sample Analysis.....	3
2.5 Regulatory Overview .....	3
<b>3.0 FINDINGS AND RECOMMENDATIONS .....</b>	<b>4</b>
<b>4.0 GENERAL COMMENTS .....</b>	<b>5</b>

### **APPENDIX A**

EMSL Analytical, Inc. (EMSL) Laboratory Results and Chain of Custody

### **APPENDIX B**

Asbestos Inspector License



# **LIMITED ASBESTOS SURVEY REPORT**

## **NORTH CENTRAL CORRECTIONAL FACILITY**

### **UNITS C & D**

### **313 LANEDALE**

### **ROCKWELL CITY, IOWA**

**Terracon Project No. C1207031**

**June 30, 2020**

## **1.0 INTRODUCTION**

The purpose of this limited asbestos survey that was conducted at the North Central Correctional Facility, Units C and D located at 313 Lanedale, Rockwell City, Iowa was to:

- Locate, sample (if accessible), quantify and assess suspect exterior building materials for the presence of asbestos.

The site services were conducted by Mr. Aaron Girard of Terracon, a State of Iowa-licensed asbestos inspector.

Homogeneous areas with suspect asbestos-containing materials (ACMs) were visually characterized and documented. Although reasonable effort was made to survey accessible suspect materials, additional suspect but unsampled materials could be located in walls, voids or in other concealed areas. Suspect ACM samples were collected in accordance with the sampling protocols outlined in Environmental Protection Agency (EPA) regulation 40 Code of Federal Regulations Part 763-Asbestos, Subpart E-Asbestos-Containing Materials in Schools (40 CFR 763; known as the Asbestos Hazard Emergency Response Act [AHERA]). Suspect ACM samples were submitted to a laboratory accredited under the National Voluntary Laboratory Accreditation Program (NVLAP) for analysis by polarized light microscopy.

### **1.1 Project Objective**

We understand that the project services were requested in anticipation of planned exterior renovation of building units C & D. EPA regulation 40 CFR 61, Subpart M, National Emission Standards for Hazardous Air Pollutants (NESHAP), prohibits the release of asbestos fibers to the atmosphere during renovation and demolition activities. The asbestos NESHAP also requires that potentially regulated ACMs must be identified, classified and quantified prior to activities that will disturb these materials.

## **2.0 ASBESTOS FIELD ACTIVITIES**

As previously mentioned, the limited asbestos survey was conducted by Mr. Aaron Girard, a State of Iowa-licensed asbestos inspector. A copy of Mr. Girard's asbestos inspector license is included in Appendix C. The limited asbestos survey was conducted in general accordance with the sample collection protocols established by EPA regulation 40 CFR 763-asbestos. A summary of the survey activities is provided in the following subsections.

### **2.1 Visual Assessment**

Our limited survey activities began with a visual assessment of the exterior areas of the buildings to establish homogeneous areas with suspect ACM. A homogeneous area consists of building materials that appear similar throughout in terms of color, texture and date of application. The assessment was limited to visually accessible areas.

### **2.2 Physical Assessment**

A physical assessment of each homogeneous area with suspect ACM was conducted to assess the friability and condition of the materials. A friable material is defined by the EPA as a material that can be crumbled, pulverized or reduced to powder by hand pressure when dry. Friability was assessed by physically touching suspect materials.

### **2.3 Sample Collection**

Based on the findings of the visual assessment, bulk samples of suspect ACM were collected in general accordance with EPA sampling protocols. Random samples of suspect materials were collected in each homogeneous area. Samples were placed in sealable containers and labeled with unique sample numbers using an indelible marker.

Terracon collected 13 bulk samples from building units C & D. The laboratory separated multi-layered materials into individual layers and analyzed a total of 14 samples. Building materials identified as glass, wood, metal or rubber are not considered suspect ACM and therefore, were not sampled. The analytical report and chain of custody for the samples collected are located in Appendix A.

## 2.4 Sample Analysis

Bulk samples were submitted under chain of custody to EMSL Analytical, Inc. (EMSL) of Cinnaminson, New Jersey, for analysis by polarized light microscopy with dispersion staining techniques per EPA's *Method for the Determination of Asbestos in Bulk Building Materials* (600/R-93-116). The percentage of asbestos, if present, was established by microscopic visual estimation. EMSL is accredited under the National Voluntary Laboratory Accreditation Program (NVLAP; lab code 101048-0).

## 2.5 Regulatory Overview

The asbestos NESHAP (40 CFR Part 61, Subpart M) regulates asbestos fiber emissions and asbestos waste disposal practices. It also requires the identification and classification of existing building materials prior to demolition or renovation activities. Under NESHAP, ACMs are classified as friable or Category I or Category II nonfriable ACM. Friable materials are those that, when dry, may be crumbled, pulverized or reduced to powder by hand pressure. Category I nonfriable ACM includes packings, gaskets, resilient floor coverings and asphalt roofing products containing more than 1% asbestos. Category II nonfriable ACMs are any materials other than Category I materials that contain >1% asbestos.

Friable ACMs and Category I and Category II nonfriable ACMs that are in poor condition and have become friable; will be subjected to drilling, sanding, grinding, cutting or abrading; or could be crushed or pulverized during anticipated renovation activities are considered regulated ACM (RACM).

RACM must be removed prior to demolition or renovation activities that will disturb the materials. If the amount of RACM exceeds 260 linear feet of pipe insulation, greater than 160 square feet for other building components, or will generate more than one cubic meter of waste, the owner or operator must provide the State of Iowa with written notification of planned removal activities at least 10 working days prior to the commencement of asbestos abatement activities. Removal of RACM must be conducted by an appropriately accredited and Iowa licensed asbestos abatement contractor. In addition, the landfill receiving the ACM materials must be notified of the asbestos content.

The Occupational Safety and Health Administration (OSHA) Asbestos standards for general industry and construction (29 CFR 1910.1001 and 1926.1101) regulate workplace exposure to asbestos. The OSHA standards require that employee exposures to airborne asbestos fibers must be maintained below 0.1 asbestos fiber per cubic centimeter of air (0.1 f/cc) as an 8-hour time-weighted average (TWA) and 1 f/cc for a 30-minute period referred to as the excursion limit (EL). The OSHA standards classify specific work practices and precautions, require building owners to maintain records of the presence and location of ACM and inform employees who might disturb these materials.

### 3.0 FINDINGS AND RECOMMENDATIONS

#### Asbestos Materials Summary

The following materials were determined to contain asbestos:

**Table 1.0 Asbestos Containing Materials (ACMs)**

##### Building Unit C

Sample Number	Material Description	Material Location	Estimated Quantity*	Asbestos Content
No Asbestos Containing Material				

SF=Square Feet; LF=Linear Feet; MF=Mechanical Fitting

\*Quantities are approximate and should be field verified.

##### Building Unit D

Sample Number	Material Description	Material Location	Estimated Quantity*	Asbestos Content
No Asbestos Containing Material				

SF=Square Feet; LF=Linear Feet; MF=Mechanical Fitting

\*Quantities are approximate and should be field verified.

Terracon did not collect or inspect any interior and roofing materials during the limited asbestos survey of units C & D. If there is any planned renovation or demolition to the roof or interior, then Terracon will need to collect additional samples from the buildings.

It should be reemphasized that although reasonable efforts were made to survey accessible suspect materials, additional suspect but unsampled materials could be located under existing building materials, in isolated areas or in other concealed areas. Therefore, if suspicious materials are encountered during demolition activities that do not appear to have been characterized as non-ACM, samples should be collected and analyzed prior to disturbing these materials or the materials can be assumed to be ACM and abated accordingly.

## **4.0 GENERAL COMMENTS**

The limited asbestos survey was conducted in a manner consistent with the level of care and skill ordinarily exercised by members of the profession currently practicing under similar conditions in the same locale. The results, findings, conclusions and recommendations expressed in this report are based on conditions observed during our survey of the building. The information contained in this report is relevant to the date on which this survey was conducted and should not be relied upon to represent conditions at a later date. This report has been prepared on behalf of and exclusively for use by Iowa Department of Administrative Services for specific application to the project as discussed. Contractors or consultants reviewing this report must draw their own conclusions regarding further investigation or remediation deemed necessary. Terracon does not warrant the work of regulatory agencies, laboratories or other third parties supplying information which may have been used in the preparation of this report. No warranty, expressed or implied, is made.

# APPENDIX A



# EMSL Analytical, Inc.

200 Route 130 North Cinnaminson, NJ 08077

Tel/Fax: (800) 220-3675 / (856) 786-5974

<http://www.EMSL.com> / [cinnasblab@EMSL.com](mailto:cinnasblab@EMSL.com)

EMSL Order: 042014553

Customer ID: AQS193A

Customer PO: C1207031

Project ID:

Attention: Aaron Girard

Terracon Consultants, Inc.

3301 Northbrook Dr

Suite A

Sioux City, IA 51105

Project: C1207031 - North Central / Correctional Facility Unit C

Phone: (402) 670-2512

Fax:

Received Date: 06/22/2020 9:50 AM

Analysis Date: 06/24/2020

Collected Date: 06/12/2020

## Test Report: Asbestos Analysis of Bulk Materials via EPA 600/R-93/116 Method using Polarized Light Microscopy

Sample	Description	Appearance	Non-Asbestos		Asbestos
			% Fibrous	% Non-Fibrous	% Type
11 042014553-0001	Southeast Corner Exterior - Stucco	Gray/White Non-Fibrous Homogeneous		100% Non-fibrous (Other)	None Detected
12 042014553-0002	Southwest Corner Exterior - Stucco	White Fibrous Homogeneous	20% Glass	80% Non-fibrous (Other)	None Detected
13 042014553-0003	Northwest Corner Exterior - Stucco	Gray/White Fibrous Homogeneous	15% Glass	85% Non-fibrous (Other)	None Detected

Analyst(s)

Christina Maiorana (1)

Shelby Baker (2)

Samantha Rundstrom, Laboratory Manager  
or Other Approved Signatory

EMSL maintains liability limited to cost of analysis. The above analyses were performed in general compliance with Appendix E to Subpart E of 40 CFR (previously EPA 600/M4-82-020 "Interim Method"), but augmented with procedures outlined in the 1993 ("final") version of the method. This report relates only to the samples reported above, and may not be reproduced, except in full, without written approval by EMSL. EMSL bears no responsibility for sample collection activities or analytical method limitations. Interpretation and use of test results are the responsibility of the client. All samples received in acceptable condition unless otherwise noted. This report must not be used by the client to claim product certification, approval, or endorsement by NVLAP, NIST or any agency of the federal government. EMSL recommends gravimetric reduction for all non-friable organically bound materials prior to analysis. Estimation of uncertainty is available on request.

Samples analyzed by EMSL Analytical, Inc. Cinnaminson, NJ NVLAP Lab Code 101048-0, AIHA-LAP, LLC-IHLAP Lab 100194, NYS ELAP 10872, NJ DEP 03036, PA ID# 68-00367, LA #04127

Initial report from: 06/24/2020 08:58:37

**Terracon**

RECEIVED

EMSL

CINNAMINSON, N.J.

042014553

**ASBESTOS BULK SAMPLING LOG**Client: Town Department of Administrative Project No.: 2020 JUN 18 10:41 C12070310: 41Building: North Central Correctional Facility Date: 6/12/20Homogeneous Area: Unit C Bldg. Inspector: Aaron Girard

Sample No.	Material Description	Sample Location	Condition <sup>1</sup>	Friability <sup>2</sup>	Contact <sup>3</sup>	Quantity
#11	Stucco	Southeast Corner Exterior				N/A
#12	Stucco	Southwest Corner Exterior				N/A
#13	Stucco	Northwest Corner Exterior				N/A

- 1 Condition: Good, Damaged, Significantly Damaged  
 2 Friability: Friable or Non-Friable  
 3 Potential for Contact: Low, Moderate, High





## Asbestos Chain of Custody

EMSL Order Number (Lab Use Only):

042014553

RECEIVED

EMSL

CINNAMINSON, N.J.

PHONE: N.J.

2020 JUN 19 AM 10:41 FAX:

Company Name: Terracon		EMSL Customer ID:	
Street: 3301 Northbrook Drive Suite 1		City: Sioux City	State/Province: Iowa
Zip/Postal Code: 51105	Country: United States	Telephone #: 402-670-2512	Fax #:
Report To (Name): Aaron Girard		Please Provide Results: <input type="checkbox"/> Fax <input checked="" type="checkbox"/> Email	
Email Address: aaron.girard@terracon.com		Purchase Order:	
Project Name/Number: C1207031 - North Central		EMSL Project ID (Internal Use Only):	
U.S. State Samples Taken: IA Correctional Facility Unit C		CT Samples: <input type="checkbox"/> Commercial/Taxable <input type="checkbox"/> Residential/Tax Exempt	
EMSL-Bill to: <input type="checkbox"/> Same <input type="checkbox"/> Different - If Bill to is Different note instructions in Comments** Third Party Billing requires written authorization from third party			
Turnaround Time (TAT) Options* - Please Check			
<input type="checkbox"/> 3 Hour <input type="checkbox"/> 6 Hour <input type="checkbox"/> 24 Hour <input checked="" type="checkbox"/> 48 Hour <input type="checkbox"/> 72 Hour <input type="checkbox"/> 86 Hour <input type="checkbox"/> 1 Week <input type="checkbox"/> 2 Week			
*For TEM Air 3 hr through 6 hr, please call ahead to schedule. There is a premium charge for 3 Hour TEM AHERA or EPA Level II TAT. You will be asked to sign an authorization form for this service. Analysis completed in accordance with EMSL's Terms and Conditions located in the Analytical Price Guide.			
<b>PCM - Air</b> <input type="checkbox"/> Check if samples are from NY <input type="checkbox"/> NIOSH 7400 <input type="checkbox"/> w/ OSHA 8hr. TWA <b>PLM - Bulk (reporting limit)</b> <input checked="" type="checkbox"/> PLM EPA 600/R-93/116 (<1%) <input type="checkbox"/> PLM EPA NOB (<1%) Point Count <input type="checkbox"/> 400 (<0.25%) <input type="checkbox"/> 1000 (<0.1%) Point Count w/Gravimetric <input type="checkbox"/> 400 (<0.25%) <input type="checkbox"/> 1000 (<0.1%) <input type="checkbox"/> NYS 198.1 (friable in NY) <input type="checkbox"/> NYS 198.6 NOB (non-friable-NY) <input type="checkbox"/> NYS 198.8 SOF-V <input type="checkbox"/> NIOSH 9002 (<1%)		<b>TEM - Air</b> <input type="checkbox"/> 4-4.5hr TAT (AHERA only) <input type="checkbox"/> AHERA 40 CFR, Part 763 <input type="checkbox"/> NIOSH 7402 <input type="checkbox"/> EPA Level II <input type="checkbox"/> ISO 10312 <b>TEM - Bulk</b> <input type="checkbox"/> TEM EPA NOB <input type="checkbox"/> NYS NOB 198.4 (non-friable-NY) <input type="checkbox"/> Chatfield SOP <input type="checkbox"/> TEM Mass Analysis-EPA 600 sec. 2.5 <b>TEM - Water</b> EPA 100.2 Fibers >10µm <input type="checkbox"/> Waste <input type="checkbox"/> Drinking All Fiber Sizes <input type="checkbox"/> Waste <input type="checkbox"/> Drinking	
<b>TEM - Dust</b> <input type="checkbox"/> Microvac - ASTM D 5755 <input type="checkbox"/> Wipe - ASTM D8480 <input type="checkbox"/> Carpet Sonication (EPA 600/J-93/167)		<b>Soil/Rock/Vermiculite</b> <input type="checkbox"/> PLM EPA 600/R-93/116 with milling prep (<1%) <input type="checkbox"/> PLM EPA 600/R-93/116 with milling prep (<0.25%) <input type="checkbox"/> TEM EPA 600/R-93/116 with milling prep (<0.1%) <input type="checkbox"/> TEM Qualitative via Filtration Prep <input type="checkbox"/> TEM Qualitative via Drop Mount Prep <input type="checkbox"/> Cincinnati Method EPA 600/R-04/004 - PLM/TEM (BC only) Other: <input type="checkbox"/>	
<input type="checkbox"/> Check For Positive Stop - Clearly Identify Homogenous Group		Filter Pore Size (Air Samples): <input type="checkbox"/> 0.8µm <input type="checkbox"/> 0.45µm	
Samplers Name: Aaron Girard		Samplers Signature: <i>Aaron Girard</i>	
Sample #	Sample Description	Volume/Area (Air) HA # (Bulk)	Date/Time Sampled
Client Sample # (s): 11 - 13		Total # of Samples: 3	
Relinquished (Client): <i>Aaron Girard</i>		Date: 6/12/20	Time: 1:20
Received (Lab): <i>CB</i>		Date: 6-19-20	Time: 9:50
Comments/Special Instructions:			

(3) EL



# EMSL Analytical, Inc.

200 Route 130 North Cinnaminson, NJ 08077

Tel/Fax: (800) 220-3675 / (856) 786-5974

<http://www.EMSL.com> / [cinnasblab@EMSL.com](mailto:cinnasblab@EMSL.com)

EMSL Order: 042014458

Customer ID: AQSI93A

Customer PO: C1207031

Project ID:

Attention: Aaron Girard

Terracon Consultants, Inc.

3301 Northbrook Dr

Suite A

Sioux City, IA 51105

Phone: (402) 670-2512

Fax:

Received Date: 06/19/2020 9:50 AM

Analysis Date: 06/22/2020 - 06/23/2020

Collected Date: 06/12/2020

Project: C1207031 / Iowa Department of Administrative / North Central Correctional Facility / Unit D Bldg.

## Test Report: Asbestos Analysis of Bulk Materials via EPA 600/R-93/116 Method using Polarized Light Microscopy

Sample	Description	Appearance	Non-Asbestos		Asbestos
			% Fibrous	% Non-Fibrous	% Type
#1 042014458-0001	Southwest Corner Exterior - CMU Grout	Gray/White Non-Fibrous Homogeneous		100% Non-fibrous (Other)	None Detected
#2 042014458-0002	Northwest Corner B Exterior (Old Boiler Room) - CMU Grout	Gray/White Non-Fibrous Homogeneous		100% Non-fibrous (Other)	None Detected
#3 042014458-0003	Northwest Corner Exterior - CMU Grout	Gray/White Non-Fibrous Homogeneous		100% Non-fibrous (Other)	None Detected
#4 042014458-0004	Northeast Corner Exterior - CMU Grout	Gray/White Non-Fibrous Homogeneous		100% Non-fibrous (Other)	None Detected
#5 042014458-0005	Southeast Corner Exterior - CMU Grout	Gray/White Non-Fibrous Homogeneous		100% Non-fibrous (Other)	None Detected
#6 042014458-0006	Old Boiler Room Lower North Side - Louver Caulking	Gray/White Non-Fibrous Homogeneous		100% Non-fibrous (Other)	None Detected
#7 042014458-0007	Southeast Corner (Between Concrete Sidewalk & Building) - Expansion Joint Caulking	Tan/White Non-Fibrous Homogeneous		100% Non-fibrous (Other)	None Detected
#8 042014458-0008	Northeast Corner (Between Concrete Sidewalk & Building) - Expansion Joint Caulking	Gray Non-Fibrous Homogeneous		100% Non-fibrous (Other)	None Detected
#9-Caulking 042014458-0009	South Side (Expansion Joint on Building) - Expansion Joint Caulking	Gray Non-Fibrous Homogeneous		100% Non-fibrous (Other)	None Detected
#9-Foam 042014458-0009A	South Side (Expansion Joint on Building) - Foam	White Non-Fibrous Homogeneous		100% Non-fibrous (Other)	None Detected
#10 042014458-0010	South Side (Below Shower Window on Building) - Expansion Joint Caulking	Gray Non-Fibrous Homogeneous		100% Non-fibrous (Other)	None Detected

Initial report from: 06/23/2020 07:40:32



## EMSL Analytical, Inc.

200 Route 130 North Cinnaminson, NJ 08077

Tel/Fax: (800) 220-3675 / (856) 786-5974

<http://www.EMSL.com> / [cinnasblab@EMSL.com](mailto:cinnasblab@EMSL.com)

**EMSL Order:** 042014458

**Customer ID:** AQS193A

**Customer PO:** C1207031

**Project ID:**

Analyst(s)

*Nancy Stalter (3)*

*Paige Havener (8)*

Samantha Rundstrom, Laboratory Manager  
or Other Approved Signatory

EMSL maintains liability limited to cost of analysis. The above analyses were performed in general compliance with Appendix E to Subpart E of 40 CFR (previously EPA 600/M4-82-020 "Interim Method"), but augmented with procedures outlined in the 1993 ("final") version of the method. This report relates only to the samples reported above, and may not be reproduced, except in full, without written approval by EMSL. EMSL bears no responsibility for sample collection activities or analytical method limitations. Interpretation and use of test results are the responsibility of the client. All samples received in acceptable condition unless otherwise noted. This report must not be used by the client to claim product certification, approval, or endorsement by NVLAP, NIST or any agency of the federal government. EMSL recommends gravimetric reduction for all non-friable organically bound materials prior to analysis. Estimation of uncertainty is available on request.

Samples analyzed by EMSL Analytical, Inc. Cinnaminson, NJ NVLAP Lab Code 101048-0, AIHA-LAP, LLC-IHLAP Lab 100194, NYS ELAP 10872, NJ DEP 03036, PA ID# 68-00367, LA #04127

Initial report from: 06/23/2020 07:40:32

042014458

Terracon

EML  
CINNAMINSON, N.J.

## ASBESTOS BULK SAMPLING LOG

2020 JUN 19 AM 10:41

Client: Iowa Department of AdministrativeProject No.: C1207031Building: North Central Correctional FacilityDate: 6/12/20Homogeneous Area: Unit D Bldg.Inspector: Aaron Girard

Sample No.	Material Description	Sample Location	Condition <sup>1</sup>	Friability <sup>2</sup>	Contact <sup>3</sup>	Quantity
#1	CMU Grout	Southwest Corner Exterior				N/A
#2	CMU Grout	Northwest Corner Exterior (Old Boiler Rm)				N/A
#3	CMU Grout	Northwest Corner Exterior				N/A
#4	CMU Grout	Northeast Corner Exterior				N/A
#5	CMU Grout	Southeast Corner Exterior				N/A
#6	Louver Canking	Old Boiler Rm Lower North Side				8 LF
#7	Expansion Joint Canking	Southeast Corner (Between Concrete Sidewalk & Building)				N/A
#8	Expansion Joint Canking	Northeast Corner (Between Concrete Sidewalk & Building)				N/A
#9	Expansion Joint Canking	South Side (Expansion Joint on Building)				N/A
#10	L	South Side Below Shower Windows on Building				N/A

- 1 Condition: Good, Damaged, Significantly Damaged  
 2 Friability: Friable or Non-Friable  
 3 Potential for Contact: Low, Moderate, High





EMSL ANALYTICAL, INC.  
LABORATORY - PRODUCTS - TRAINING

# Asbestos Chain of Custody

EMSL Order Number (Lab Use Only):

042014458

RECEIVED  
EMSL  
CINNAMINSON, N.J.  
PHONE:  
FAX:  
2020 JUN 19 AM 10:41

Company Name : Terracon		EMSL Customer ID:	
Street: 3301 Northbrook Drive Suite1		City: Sioux City	State/Province: Iowa
Zip/Postal Code: 51105	Country: United States	Telephone #: 402-670-2512	Fax #:
Report To (Name): Aaron Girard		Please Provide Results: <input type="checkbox"/> Fax <input checked="" type="checkbox"/> Email	
Email Address: aaron.girard@terracon.com		Purchase Order:	
Project Name/Number: C/207031 - North Central		EMSL Project ID (Internal Use Only):	
U.S. State Samples Taken: IA Correctional Facility, Waukegan		CT Samples: <input type="checkbox"/> Commercial/Taxable <input type="checkbox"/> Residential/Tax Exempt	
EMSL-Bill to: <input type="checkbox"/> Same <input type="checkbox"/> Different - If Bill to is Different note instructions in Comments**			
Third Party Billing requires written authorization from third party			
Turnaround Time (TAT) Options* - Please Check			
<input type="checkbox"/> 3 Hour <input type="checkbox"/> 6 Hour <input type="checkbox"/> 24 Hour <input checked="" type="checkbox"/> 48 Hour <input type="checkbox"/> 72 Hour <input type="checkbox"/> 96 Hour <input type="checkbox"/> 1 Week <input type="checkbox"/> 2 Week			
*For TEM Air 3 hr through 6 hr, please call ahead to schedule. There is a premium charge for 3 Hour TEM AHERA or EPA Level II TAT. You will be asked to sign an authorization form for this service. Analysis completed in accordance with EMSL's Terms and Conditions located in the Analytical Price Guide.			
<b>PCM - Air</b> <input type="checkbox"/> Check if samples are from NY <input type="checkbox"/> NIOSH 7400 <input type="checkbox"/> w/ OSHA 8hr. TWA <b>PLM - Bulk (reporting limit)</b> <input checked="" type="checkbox"/> PLM EPA 600/R-93/116 (<1%) <input type="checkbox"/> PLM EPA NOB (<1%) Point Count <input type="checkbox"/> 400 (<0.25%) <input type="checkbox"/> 1000 (<0.1%) Point Count w/Gravimetric <input type="checkbox"/> 400 (<0.25%) <input type="checkbox"/> 1000 (<0.1%) <input type="checkbox"/> NYS 198.1 (friable in NY) <input type="checkbox"/> NYS 198.6 NOB (non-friable-NY) <input type="checkbox"/> NYS 198.8 SOF-V <input type="checkbox"/> NIOSH 9002 (<1%)		<b>TEM - Air</b> <input type="checkbox"/> 4-4.5hr TAT (AHERA only) <input type="checkbox"/> AHERA 40 CFR, Part 763 <input type="checkbox"/> NIOSH 7402 <input type="checkbox"/> EPA Level II <input type="checkbox"/> ISO 10312 <b>TEM - Bulk</b> <input type="checkbox"/> TEM EPA NOB <input type="checkbox"/> NYS NOB 198.4 (non-friable-NY) <input type="checkbox"/> Chatfield SOP <input type="checkbox"/> TEM Mass Analysis-EPA 600 sec. 2.5 <b>TEM - Water: EPA 100.2</b> Fibers >10µm <input type="checkbox"/> Waste <input type="checkbox"/> Drinking All Fiber Sizes <input type="checkbox"/> Waste <input type="checkbox"/> Drinking	
<b>TEM - Dust</b> <input type="checkbox"/> Microvac - ASTM D 5755 <input type="checkbox"/> Wipe - ASTM D6480 <input type="checkbox"/> Carpet Sonication (EPA 600/J-93/167)		<b>Soil/Rock/Vermiculite</b> <input type="checkbox"/> PLM EPA 600/R-93/116 with milling prep (<1%) <input type="checkbox"/> PLM EPA 600/R-93/116 with milling prep (<0.25%) <input type="checkbox"/> TEM EPA 600/R-93/116 with milling prep (<0.1%) <input type="checkbox"/> TEM Qualitative via Filtration Prep <input type="checkbox"/> TEM Qualitative via Drop Mount Prep <input type="checkbox"/> Cincinnati Method EPA 600/R-04/004 - PLM/TEM (BC only) <b>Other:</b> <input type="checkbox"/>	
<input type="checkbox"/> Check For Positive Stop - Clearly Identify Homogenous Group		Filter Pore Size (Air Samples): <input type="checkbox"/> 0.8µm <input type="checkbox"/> 0.45µm	
Samplers Name: Aaron Girard		Samplers Signature: <i>Aaron Girard</i>	
Sample #	Sample Description	Volume/Area (Air) HA # (Bulk)	Date/Time Sampled
Client Sample # (s): 1 - 10		Total # of Samples: 10	
Relinquished (Client): <i>Aaron Girard</i>		Date: 6/12/20	Time: 1700
Received (Lab): <i>cm</i>		Date: 6-19-20	Time: 9:50
Comments/Special Instructions:			

10 EL

# APPENDIX B

**AARON GIRARD**

**DOB:** 08-03-1985

**Issued:** 01-09-2020



This person is licensed to perform asbestos work in the State of Iowa. ID card is intended for official use only and must be present on jobsite.

**License Type**  
INSPECTOR

**Number**  
20-3632

**Expires**  
12-06-2020



Asbestos

*Rod A. Roberts*  
**Rod A. Roberts**  
**Labor Commissioner**





State of Iowa - Department of Administrative Services

Printed on Tue Jun 30, 2020 at 05:39 pm CDT

Job #: 9098.00 DOC NCCF Unit C Stucco Repair  
313 Lanedale  
Rockwell City, Iowa 50579  
7122977521



Description

**Taken Date**

2020/03/06 10:03:03

**Uploaded By**

Dick Cleaveland

**Upload Date**

2020/05/04 17:01:20

**File Name**

[DSC07202.JPG](#)



Description

**Taken Date**

2020/03/06 10:02:52

**Uploaded By**

Dick Cleaveland

**Upload Date**

2020/05/04 17:01:20

**File Name**

[DSC07201.JPG](#)



Description

**Taken Date**

2020/03/06 10:02:38

**Uploaded By**

Dick Cleaveland

**Upload Date**

2020/05/04 17:01:22

**File Name**

[DSC07200.JPG](#)



Description

**Taken Date**

2020/03/06 10:02:29

**Uploaded By**

Dick Cleaveland

**Upload Date**

2020/05/04 17:01:21

**File Name**

[DSC07199.JPG](#)



State of Iowa - Department of Administrative Services

Printed on Tue Jun 30, 2020 at 05:39 pm CDT

Job #: 9098.00 DOC NCCF Unit C Stucco Repair  
313 Lanedale  
Rockwell City, Iowa 50579  
7122977521



Description

**Taken Date**

2020/03/06 10:01:40

**Uploaded By**

Dick Cleaveland

**Upload Date**

2020/05/04 17:01:18

**File Name**

[DSC07198.JPG](#)



Description

**Taken Date**

2020/03/06 10:01:28

**Uploaded By**

Dick Cleaveland

**Upload Date**

2020/05/04 17:01:17

**File Name**

[DSC07196.JPG](#)



Description

**Taken Date**

2020/03/06 10:01:32

**Uploaded By**

Dick Cleaveland

**Upload Date**

2020/05/04 17:01:23

**File Name**

[DSC07197.JPG](#)



Description

**Taken Date**

2020/03/06 10:01:22

**Uploaded By**

Dick Cleaveland

**Upload Date**

2020/05/04 17:01:16

**File Name**

[DSC07195.JPG](#)



State of Iowa - Department of Administrative Services

Printed on Tue Jun 30, 2020 at 05:39 pm CDT

Job #: 9098.00 DOC NCCF Unit C Stucco Repair  
313 Lanedale  
Rockwell City, Iowa 50579  
7122977521



Description

**Taken Date**

2020/03/06 10:01:06

**Uploaded By**

Dick Cleaveland

**Upload Date**

2020/05/04 17:01:17

**File Name**

[DSC07194.JPG](#)



Description

**Taken Date**

2020/03/06 10:00:57

**Uploaded By**

Dick Cleaveland

**Upload Date**

2020/05/04 17:01:13

**File Name**

[DSC07193.JPG](#)



Description

**Taken Date**

2020/03/06 10:00:49

**Uploaded By**

Dick Cleaveland

**Upload Date**

2020/05/04 17:01:13

**File Name**

[DSC07192.JPG](#)



Description

**Taken Date**

2020/03/06 10:00:42

**Uploaded By**

Dick Cleaveland

**Upload Date**

2020/05/04 17:01:15

**File Name**

[DSC07191.JPG](#)





State of Iowa - Department of Administrative Services

Printed on Tue Jun 30, 2020 at 05:39 pm CDT

Job #: 9098.00 DOC NCCF Unit C Stucco Repair  
313 Lanedale  
Rockwell City, Iowa 50579  
7122977521



Description

**Taken Date**

2020/03/06 10:00:37

**Uploaded By**

Dick Cleaveland

**Upload Date**

2020/05/04 17:01:13

**File Name**

[DSC07190.JPG](#)



Description

**Taken Date**

2020/03/06 10:00:23

**Uploaded By**

Dick Cleaveland

**Upload Date**

2020/05/04 17:01:13

**File Name**

[DSC07189.JPG](#)



Description

**Taken Date**

2020/03/06 10:00:17

**Uploaded By**

Dick Cleaveland

**Upload Date**

2020/05/04 17:01:16

**File Name**

[DSC07188.JPG](#)



Description

**Taken Date**

2020/03/06 09:59:58

**Uploaded By**

Dick Cleaveland

**Upload Date**

2020/05/04 17:01:15

**File Name**

[DSC07187.JPG](#)



State of Iowa - Department of Administrative Services

Printed on Tue Jun 30, 2020 at 05:39 pm CDT

Job #: 9098.00 DOC NCCF Unit C Stucco Repair  
313 Lanedale  
Rockwell City, Iowa 50579  
7122977521



Description

Taken Date

2020/03/06 09:59:48

Uploaded By

Dick Cleaveland

Upload Date

2020/05/04 17:01:11

File Name

[DSC07186.JPG](#)



Description

Taken Date

2020/03/06 09:59:42

Uploaded By

Dick Cleaveland

Upload Date

2020/05/04 17:01:10

File Name

[DSC07185.JPG](#)



Description

Taken Date

2020/03/06 09:59:38

Uploaded By

Dick Cleaveland

Upload Date

2020/05/04 17:01:10

File Name

[DSC07184.JPG](#)



Description

Taken Date

2020/03/06 09:59:26

Uploaded By

Dick Cleaveland

Upload Date

2020/05/04 17:01:11

File Name

[DSC07183.JPG](#)



State of Iowa - Department of Administrative Services

Printed on Tue Jun 30, 2020 at 05:39 pm CDT

Job #: 9098.00 DOC NCCF Unit C Stucco Repair  
313 Lanedale  
Rockwell City, Iowa 50579  
7122977521



Description

**Taken Date**

2020/03/06 09:59:14

**Uploaded By**

Dick Cleaveland

**Upload Date**

2020/05/04 17:01:10

**File Name**

[DSC07182.JPG](#)



Description

**Taken Date**

2020/03/06 09:58:41

**Uploaded By**

Dick Cleaveland

**Upload Date**

2020/05/04 17:01:12

**File Name**

[DSC07181.JPG](#)



Description

**Taken Date**

2020/03/06 09:58:35

**Uploaded By**

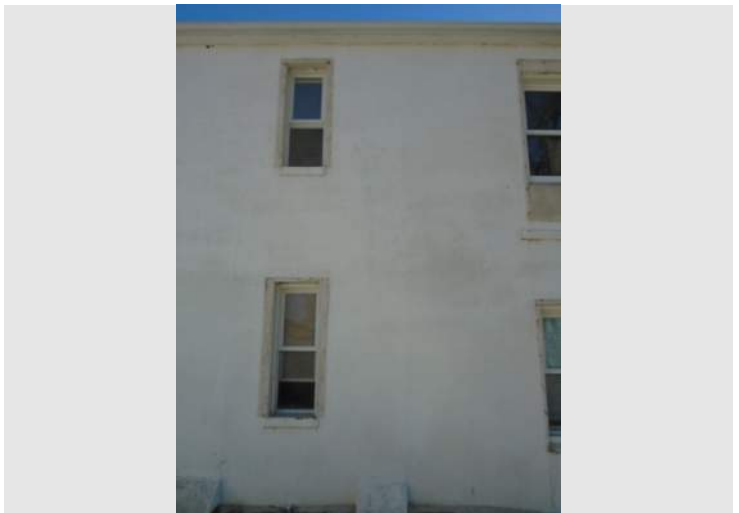
Dick Cleaveland

**Upload Date**

2020/05/04 17:01:12

**File Name**

[DSC07180.JPG](#)



Description

**Taken Date**

2020/03/06 09:58:29

**Uploaded By**

Dick Cleaveland

**Upload Date**

2020/05/04 17:01:08

**File Name**

[DSC07179.JPG](#)



State of Iowa - Department of Administrative Services

Printed on Tue Jun 30, 2020 at 05:39 pm CDT

Job #: 9098.00 DOC NCCF Unit C Stucco Repair  
313 Lanedale  
Rockwell City, Iowa 50579  
7122977521



Description

**Taken Date**

2020/03/06 09:58:21

**Uploaded By**

Dick Cleaveland

**Upload Date**

2020/05/04 17:01:10

**File Name**

[DSC07178.JPG](#)



Description

**Taken Date**

2020/03/06 09:58:15

**Uploaded By**

Dick Cleaveland

**Upload Date**

2020/05/04 17:01:08

**File Name**

[DSC07177.JPG](#)



Description

**Taken Date**

2020/03/06 09:58:09

**Uploaded By**

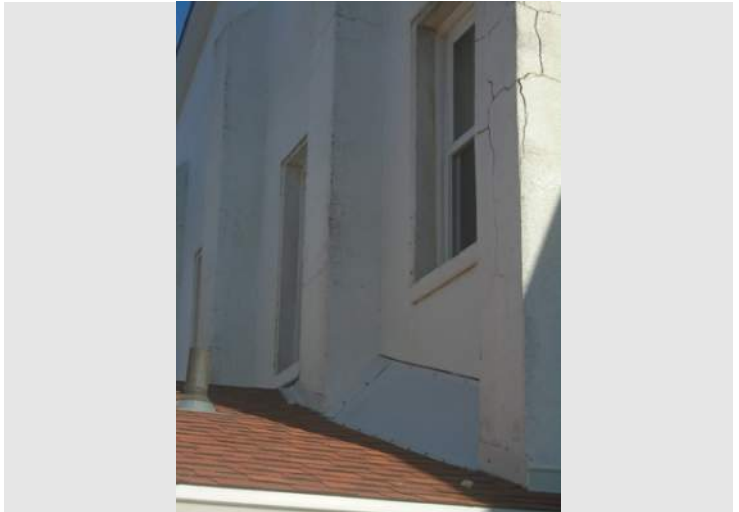
Dick Cleaveland

**Upload Date**

2020/05/04 17:01:08

**File Name**

[DSC07176.JPG](#)



Description

**Taken Date**

2020/03/06 09:57:35

**Uploaded By**

Dick Cleaveland

**Upload Date**

2020/05/04 17:01:08

**File Name**

[DSC07175.JPG](#)



State of Iowa - Department of Administrative Services

Printed on Tue Jun 30, 2020 at 05:39 pm CDT

Job #: 9098.00 DOC NCCF Unit C Stucco Repair  
313 Lanedale  
Rockwell City, Iowa 50579  
7122977521



Description

**Taken Date**

2020/03/06 09:57:26

**Uploaded By**

Dick Cleaveland

**Upload Date**

2020/05/04 17:01:09

**File Name**

[DSC07174.JPG](#)



Description

**Taken Date**

2020/03/06 09:57:08

**Uploaded By**

Dick Cleaveland

**Upload Date**

2020/05/04 17:01:16

**File Name**

[DSC07173.JPG](#)



Description

**Taken Date**

2020/03/06 09:56:58

**Uploaded By**

Dick Cleaveland

**Upload Date**

2020/05/04 17:01:08

**File Name**

[DSC07172.JPG](#)