

Renovate turf or establish a new lawn with an OS15.

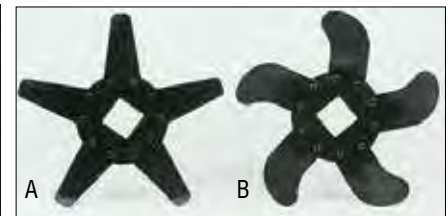


The optional small seeds box allows two seeds to be metered at one time into the same seed tube for even distribution.

	OS1548	OS1572
Horsepower	25-60 HP	30-60 HP
Hitch	Cat. 1	
Working Width (broadcast) (cm)	51" (129)	72" (183)
Overall Width (w/gauge wheels)	77-3/4"	99"
Overall Width (w/rear roller drive)	60-1/8"	81-1/4"
Overall Length	52-7/16"	
Weight - lb (kg) (gauge whl drive)	1290 (585)	1645 (746)
Knives - 5 per flange	Standard or Curved 115 on 2"; 80 on 3" Standard or Curved 170 on 2"; 115 on 3"	
Rotor	18" Diameter	
Productivity (3-1/2 mph)	1.5 Acres/hr (broadcast) 2 Acres/hr (broadcast)	
Depth Adjustment	0" - 1-1/2"	
Blade Spacing	2" or 3"	
Gearbox	540 RPM Cast Iron Housing	
Seedbox	4 or 6 Bushel; Paddle Agitator	
Small Seedbox Capacity	.95 or 1.36 Bushel	
Seed Cups & Drive	7 or 10 Seed Cups; Powder Metal Flutes with Individual Cleanout Handles, RH Gauge Wheel Drive or Rear Roller Drive	
Packer Wheels	12" Cast Iron with Corrugated Scraper	
Roller Chain	#80 or #100, Adjustable, Fully Enclosed in Oil Bath	
Driveline	Fully Shielded, Heavy-Duty, Cat. 3 Slip Clutch Std	
Gauge Wheels	18" x 8.50" x 8" Turf Tires-4 ply	
Slit-Seeder Weight - lb	2" Knife Spacing = 38 3" Knife Spacing = 36	2" Knife Spacing = 56 3" Knife Spacing = 54



Color Options:



Choice of Knives

(A) Straight, aggressive 3/16" thick knives prepare the soil by pulling up thatch, while (B) 10 gauge curved knives provide a minimum of surface disturbance.

*See dealer for complete warranty information.



Precise metering and seed-to-soil contact.

The PS1572 Primary Seeder is perfect for the hometown landscaper to do lawns, community parks and areas between the curb and sidewalk. They also perform better than larger models in areas where light moguls, undulations, and depressions exist.



	PS1572
Horsepower	25-50 HP
Hitch	Cat. 1
Working Width (cm)	70-1/2" (179)
Overall Width	79-1/8"
Overall Length	29-3/4"
Overall Height	39"
Weight - lb (3-Pt) (kg)	1165 (528)
Seedbox Construction	16 Gauge Front & Rear, 10 Gauge Endplates
Seedbox Capacity	6 Bushel
Output Range	Varies By Seed Variety; Consult Manual
Front Roller	29 Rings - 12" Diameter 1-1/2" Spindles w/ Sealed Ball Bearings
Rear Roller	30 Rings - 9-1/2" Diameter
Roller Spindles	1-1/2" Front, 1" Rear w/Greaseable Bearings
Chain	#40 with Spring Loaded Idler
Seed Cups	10 Each
Track Removers	2 Each

Color Options:



(Cover removed for photo.)

Various seeding rates can be obtained by turning the dual sprocket over. The easy drive system assures a consistent flow of seed. The rear roller is spring loaded to keep in constant contact with the ground, promoting healthy "seed-to-soil" contact.

"Precision seeding" is accomplished using proven fluted metering cups (shown here). Each flute grabs just the right amount of seed for even distribution. Millions of cups are in use for a variety of crops around the world.



Pull-Type salt, seed, sand, or top dressing spreader.

- Easily disengage spinner for transport
- Adjustment link for various hitch heights
- Two hopper sizes
- Hopper cover available to protect material
- 2" Ball hitch
- Ground driven



	PTS500	PTS700
Hitch	Pull-Type, 2" Ball Hitch Ground Driven	
Delivery	Spin-Type Broadcast	
Hopper	One Piece, Seamless Polyethylene	
Dry Weight (kg)	165 (75)	176 (80)
Frame	Heavy-Duty Tubular	
Vanes and Spinner	Stainless Steel	
Adjustment Levers	Plated	
Loading Height	54" Average	
Max. Spreading Width	39-46 ft.	
Hopper Capacity - lb (kg)	350 (158)	563 (255)
Pattern Settings	Three	
Overall Width	41"	
Wheel Size	16 x 6.5-8	
Acres Covered	7-15 Acres per Hour (depending on slide opening)	

Pendulum Spreaders offer a more consistent spread.

	PFS4000	PFS5060	PFS8010
Hitch	Cat. 1	Cat. 1 & 2	Cat. 2
Capacity	925 lbs	1150 - *1390 lbs	2040 - *3000 lbs
Delivery	Pendulum-Type		
Hopper	One Piece, Seamless Fiberglass		Cone shape, polyethylene
Frame	Heavy-Duty Tubular		
Driveline	Shielded		
Spreading Width	20 - 46 Ft.		
Gearbox	1-3/8" Shaft		
Adjustment Levers	Plated		
Discharge Opening	Manual, Optional Hydraulic		N/A
Additional Agitation	Optional		N/A

*Optional top extensions needed for this capacity

Various Spouts Available

- Broadcast (Standard)
- Banding (Wide)
- Banding (Narrow)
- Narrow Broadcast
- PTO Driven



Pendulum Spreaders offer a more consistent spread and delivery than broadcast spreaders.





Spreading made fast and easy with weatherproof hopper.

- Spin-type broadcast for even spreading
- One piece seamless Polyethylene hopper
- Adjustable delivery patterns
- Vinyl cover option to keep the elements out
- PTO Driven

COMPARE TO OTHERS!

Stainless Steel Parts

Spinner Plate

Spinner Vanes

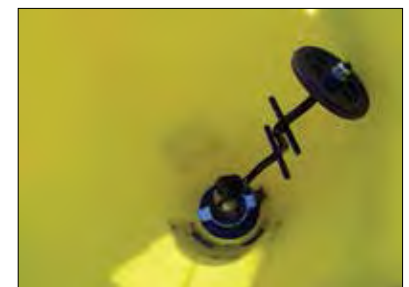
Hopper Doors, Hardware
and Adjustment Handle

Featuring an all-steel frame, frontal splash plate and three available hopper sizes, Land Pride Broadcast Spreaders fit most landscape, nursery, hobby farm, sod farm and municipality uses.

	FSP500	FSP700	FSP1000
Min. Horsepower	15 HP	18 HP	20 HP
Hitch	Cat. 1		
Capacity (kg)	350 lbs. (158.7) 5.85 cu.ft.	563 lbs. (255) 9.38 cu.ft.	673 lbs. (305) 11.22 cu.ft.
Overall Dimensions	37.2" x 40.4"	44" x 46"	46.8" x 46.8"
Loading Height	3'	3' 4"	3' 9"
Weight - empty - lb (kg)	119 (54)	128 (58)	139 (63)
Net Spreadable Granular Width	23' - 54'		
Transmission Ratio	1:1		
Range of Spreading Possibility - lb/acres	44 - 890		



A built in tow hook handles up to 1200 pounds; just right for hauling extra sacks of fertilizer or seed.



Our agitator is standard equipment and is useful when spreading powder type materials that tend to bridge.

Land Pride's 'seeding package' is a unique blend of products that work well by themselves, and compliment each other when used together with a Land Pride Disc Harrow. This package is ideal for large grassy areas, reclamation sites, or wild game food plots.

- **Seed Bed Roller** – this is an excellent finishing tool with applications from roadside use to landscaping. The SBR will break up clumps and dirt clods while pressing seed into the soil for seed to soil contact.
- **Electric Spin Spreader** – our Spin Spreader is easily calculated for a host of seed types, many of which we have put into a seed calculation chart for you. Electrically turn on and off from your tractor or vehicle seat.
- **Drag Harrow** – our Drag Harrow has light, medium and aggressive applications, simply by turning the harrow in different positions. Perfect for dragging a sports field or smoothing out recently cultivated ground.



SBR72 w/Optional Pull Hitch

SEED BED ROLLER

	SBR72
Horsepower	18-52 HP
Hitch	Cat. 1 & Cat. 1 QH
Working Width (cm)	69" (175)
Weight - lb (kg)	442 (200) 3-Pt
Optional Pull Hitch	Easily Pivots for Ball or Clevis Hook-up
Roller Diameter	11-3/8"
Roller Material	Notched Gray Iron
Scraper	Profiled Roller Scraper
Tires	Transport Tires on Pull-Type
Stand	Hitch Support Stand
Options	Easily Converts from Pull-Type to 3-Point

Color Options:



SBR72 3-Point (Base Model)

DRAG HARROWS

	DRG04	DRG06	DRG08
Min. HP	8 HP	12 HP	16 HP
Hitch	2 Log Chains with Pull Ring		
Working Width (cm)	4' (122)	6' (183)	8' (244)
Weight - lb (kg)	89 (40)	138 (63)	185 (84)
Tine Diameter	1/2"		
Construction	High Carbon Steel Tine Construction		

- Can be flipped over for a more aggressive action

Color:

ELECTRIC SPIN SPREADER

Volume/Capacity	2 cu. ft. Spin Spreader
Construction	Poly Hopper w/ Water Tight Poly Press Fit Lid
Spread Pattern	20 to 25 ft. Wide w/o Deflector
Remote Control	Remote Tether Control

Color:



Seed Bed Roller, Disc Harrow, Electric Spin Spreader, and Drag Harrow are all available individually.



Affordability for food plots.

The Plot Ranger is an ideal tool for planting food plots by the avid hunter or the ultimate animal lover and is sized right to work behind a sub-compact to compact tractor, your ATV, UTV, or even your hunting truck.



Spreader is available for quick mounting to your Utility Vehicle or your Disc Harrow.

	FPS48
Hitch	Pull-Type
Disc Cutting Width (cm)	40" - 50" (102 - 127)
Overall Width	54"
Height	52"
Length	104"
Weight - lb (kg) w/Spin Spreader & Packer	510 (231)
Weight Load on Each Disc	46 lbs
Number of Disc Blades	8
Disc Blade Size & Type	16" Notched
Blade Spacing	7-1/2"
Transport / Gauging Tires	13" Diameter 4 Ply Tubeless
Bearing Hanger	3/8" Plate
Bearing Type, 2 per Gang	Self Aligning, Sealed Bearing
Gang Tube	3" x 2"
Gang Axle	1" Square High Carbon Steel
Disc Angle	Front Gang: 0°, 7°, 14° & 21° Rear Gang: 0°, 7°, 14° & 21°
Frame Construction	2" x 2" Square Tubular Design
Lifting Device	Electric Actuator, 12 Volt or Ratchet Jack
Rear Axle Pivot	Greaseable
Packer Roller Width	40-7/16"
Packer Roller Bearing	Greaseable
Spreading Device	Spin Spreader, 12V, Electrically Operated
Spreader Hopper Loading Ht.	42" Off Ground
Spreader Hopper Vol./Cap.	2 cu. ft. (15 gal.) (100 lbs. Maximum Capacity Weight)
Spin Spreader Deflector	Diverts Seed to Smaller Spreading Width
Small Seed Restrictor	Restricts Small Seed for Smaller Distribution Levels

Color Options:



- Roller/packer raises above spreader for transport
- Seed deflector controls spreading width

Ideal for light duty maintenance and landscaping.



Land Pride's economical RB05, RB15, and RB16 Series Rear Blades are an excellent and economical choice for leveling, grading, finishing, and backfilling. They are the perfect companion for your sub-compact or compact tractor.

The multitude of forward and reverse working angles, moldboard offset capability, as well as tilt on the RB16, allows the operator to work right up next to retaining walls, abutments and raised curbing. They are excellent for snow removal in the pulling or push blade mode. A retractable parking stand is included to accommodate easier blade removal, storage and remount capabilities.

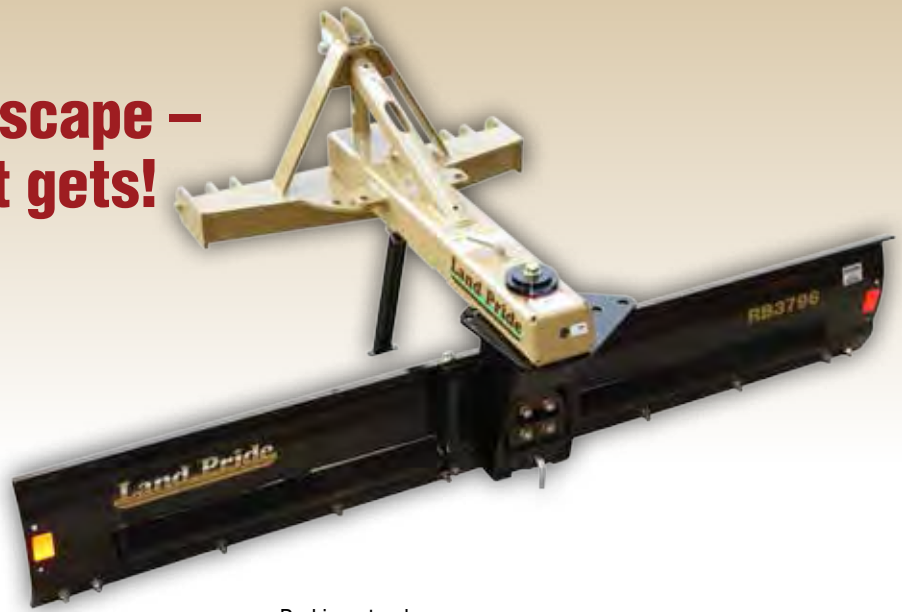
	RB0548	RB0560	RB1560	RB1572	RB1584	RB1660	RB1672	RB1684
Horsepower	17-25 HP		17-40 HP			20-40 HP		
Hitch	Cat. 1		Cat. 1			Cat. 1		
Working Width (cm)	48" (122)	60" (152)	60" (152)	72" (183)	84" (213)	60" (152)	72" (183)	84" (213)
Approx. Weight - lb (kg)	128 (58)	143 (65)	248 (112)	269 (122)	289 (131)	283 (128)	297 (134)	319 (145)
Angling	5 Fwd / 5 Rev Up to 30° Right or Left		7 Fwd Up to 45°; 5 Rev Up to 30°			7 Fwd Up to 45°; 3 Rev Up to 30°		
Tilt	N/A		N/A			5 Positions; Up to 15° Left or Right		
Offset	10" Left or Right		12" Left or Right			12" Left or Right		
Moldboard Height	13-1/2"		14"			14"		
Moldboard Thickness	1/4"		1/4"			1/4"		
Cutting Edge	3/8" x 3", Replaceable, Heat Treated		1/2" x 6"; Reversible & Replaceable, Heat Treated			1/2" x 6", Reversible & Replaceable; Heat Treated		
Options	N/A		Skid Shoes			Skid Shoes, Hydraulic Angling		

Color Options:



Everyday blades; Dirt, Snow, Farm, Landscape – About as versatile as it gets!

The Land Pride RB26 and RB37 Series Rear Blades offer 3-way positioning (blade angle, blade tilt, and blade offset) and are an excellent choice for leveling, grading, or backfilling. They excel in snow removal in either the pulling or push blade mode. Their offset and tilt capability make them an excellent choice for construction and maintenance of drainage ditches, waterways, soil contours, and for maintaining silage pit operations. Optional hydraulic angling kits are available for both models.



- Parking stand
- Optional side plates and skid shoes
- Optional hydraulic angle kit
- Cat. 1 or 2



- Parking stand
- Second top link hole for additional lifting leverage
- Optional side plates and skid shoes
- Optional hydraulic angle kit

	RB2672	RB2684	RB2696	RB3772	RB3784	RB3796
Horsepower	25-60 HP			35-80 HP		
Hitch	Cat. 1			Cat. 1 & 2 Combination		
Working Width (cm)	72" (183)	84" (213)	96" (244)	72" (183)	84" (213)	96" (244)
Weight - lb (kg)	369 (167)	396 (180)	425 (193)	595 (270)	630 (286)	665 (302)
Angling	7 Fwd. Up to 45°; 3 Rev. Up to 60°			7 Fwd. Up to 45°; 3 Rev. Up to 30°		
Tilt	5 Positions; Up to 15° Left or Right, 30° Total			7 Positions; Up to 22.5° Left or Right, 45° Total		
Offset	12"			26" Left or Right		
Moldboard Height	17-1/2"			17"		
Moldboard Thickness	5/16"			5/16"		
Kingpin	3-1/2" Tube			2-1/2" Solid Shaft		
Cutting Edge	1/2" x 6", Reversible & Replaceable; Heat Treated			1/2" x 6", Reversible & Replaceable; Heat Treated		
Options	Side Plates, Skid Shoes, Hydraulic Angling			Side Plates, Skid Shoes Hydraulic Angling		

Color Options:



The perfect all-around blade.

Our RBT35 Series Blade is just right for use in landscape, construction, farming or snow removal. Looked upon as the perfect all-around blade, the RBT35 Series is offered with optional hydraulic function for Tilt, Offset and Angle.

- All hydraulic
- The optional cushion valve can help protect the cylinders in the event an obstruction is hit
- The optional rear gauge wheel can turn your blade into an excellent grading tool

**Make changes
On The Go**
with our 3-Way
Hydraulic
Rear Blades



	RBT3584	RBT3596
Horsepower	2WD: 35-80 HP 4WD: Up to 65 HP	
Hitch	Cat. 1 & 2	
Working Width (cm)	84" (213)	96" (244)
Weight - lb (kg)	709 (322)	745 (338)
Maximum G.V.W. - lb (kg)	9500 (4318)	
Blade Angle	9 Positions (Manual): Up to 50° Fwd & Rev (Hydraulic)	
Tilt	Up to 20°	
Tilt Cylinder	2" x 6" x 1-1/4"	
Swing Offset	Up to 30° Left and Right	
Offset Cylinder	3-1/2" x 14" x 1-1/4"	
Moldboard Height	17"	
Moldboard Thickness	5/16" with 3/16" Tapered Reinforcement Channel	
Cutting Edge	1/2" x 6", Reversible & Replaceable; Heat Treated	
Options	Skid Shoes, End Plates Gauge Wheel, Double Selector Valve, Cushion Valve	

Color Options:



Our larger blades are excellent farm blades, from barns to pastures to fields . . . our blades can do it all!

Land Pride's RBT40 Series 3-Way Hydraulic Rear Blades are built tough from the ground up for applications ranging from landscaping, construction, snow removal, and feedlot cleaning. Designed to handle tractors up to 100 HP, this blade is also ideal for ditching, road grading and all-around farm use. By using optional hydraulics at all three positions, changes to angle, tilt, and offset can be made while on the go. Optional skid shoes and side plates are available for more precise results.



Skid shoes and end plates are ideal tools for large grading jobs or snow removal.



**Make changes
On The Go**
with our 3-Way
Hydraulic
Rear Blades

	RBT4096	RBT40108
Horsepower	2WD: 65-100 HP 4WD: Up to 75 HP	
Hitch	Cat. 1 & 2	
Working Width (cm)	96" (244)	108" (274)
Weight - lb (kg)	848 (385)	898 (407)
Maximum G.V.W. - lb (kg)	9500 (4318)	
Blade Angle	15 Positions (Manual): Forward and Reverse, Up to 45°	
Angle Cylinder	3-1/2" x 16" x 1-1/4"	
Tilt	Up to 15°	
Tilt Cylinder	3" x 6" x 1-1/4"	
Swing Offset	Up to 30° Left and Right	
Offset Cylinder	3-1/2" x 16" x 1-1/4"	
Moldboard Height	17"	
Moldboard Thickness	5/16" with 1/4" Tapered Reinforcement Channel	
Cutting Edge	1/2" x 6", Reversible & Replaceable; Heat Treated	
Options	Skid Shoes, Side Plates, Hydraulic Cushion Valve Double Selector Valve	

Color Options:



Built tough...where it really counts.



Optional cushion valve protects cylinders and blade components during extreme impacts. For use on RBT40 & 45 Models.



Optional single or dual gauge wheels add accuracy and simplify grading operations.

**Make changes
On The Go**
with our 3-Way
Hydraulic
Rear Blades

	RBT4596	RBT45108	RBT55120
Horsepower	70-125 HP		90-180 HP
Hitch	Cat. 2 & 3		Cat. 2 & 3
Working Width (cm)	96" (244)	108" (274)	120" (304)
Weight - lb (kg)	1130 (513)	1166 (529)	1,753 (795)
Maximum G.V.W. - lb (kg)	9,500 (4309)		15,000 (6818)
Blade Angle	Fwd & Rev Up to 45°		Fwd & Rev Up to 45°
Angle Cylinder	4" x 16"		4-1/2" x 16" x 2"
Tilt	Up to 15°		Up to 30°
Tilt Cylinder	3" x 6" x 1-1/4"		3" x 8" x 1-1/4"
Swing Offset	Up to 35° Left and Right		33°
Offset Cylinder	4" x 16"		4-1/2" x 16" x 2"
Moldboard Height	19"		19"
Moldboard Thickness	5/16" with 1/4" Boxed Reinforcement		5/16" with 1/4" Boxed Reinforcement
Cutting Edge	1/2" x 6", Reversible & Replaceable; Heat Treated		1/2" x 6", Reversible & Replaceable; Heat Treated
Options	Skid Shoes, End Plates, Single or Dual Gauge Wheel, Cushion Valve, Double Selector Valve		Skid Shoes, End Plates, Hardened Wear Plates, Hydraulic Single Gauge Wheel, Hydraulic Dual Gauge Wheel, Double Selector Valve

Color Options:



Shown with optional end plates.

RBT45 & 55 pivot weldment features a 1" thick plate steel turntable, 3/4" thick tilt pivot bushing and a 4" solid kingpin.



**1/2" Thick moldboard...
this blade can tackle most
jobs thrown its way!**



Rear blades don't come any tougher than Land Pride's RBT45, RBT55, and RBT60 Series 3-Way Rear Blades. They are built tough to handle leveling, finish grading, and backfilling applications involving roadwork, construction, landscaping, nurseries, drainage ditches, feedlot cleaning, farm use, and snow removal.

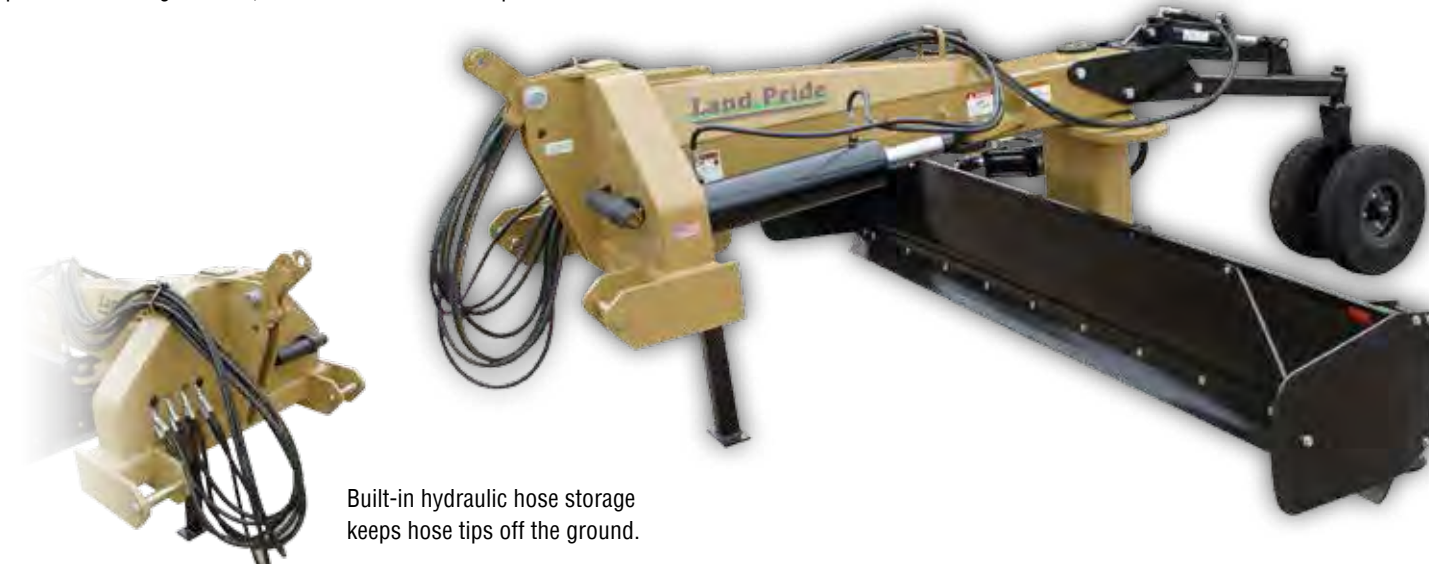
The 19" tall rolled moldboards can be hydraulically angled left or right up to 45°, the ends can be tilted up or down by as much as 15°, and the whole blade can be offset to the left or right. The blade can also be rotated 180° for blading in reverse with the same angling, tilting, and offset capabilities. Available accessories include gauge wheels for good depth control, end plates for holding material, and skid shoes for blade protection.

	RBT6010	RBT6012
Horsepower	2 WD: 225 HP 4 WD: 200 HP	2 WD: 175 HP 4 WD: 160 HP
Hitch	Cat. 2 & 3	
Working Width (cm)	10' (304)	12' (366)
Weight - lb (kg)	2,442 (1108)	2,582 (1172)
Blade Angles	Up to 45°, Fwd. & Rev. 5" x 18" Cylinder	
Offset	Up to 55" Left & Right 5" x 18" Cylinder	
Tilt	Up to 15°, 3-1/2" x 8" Cylinder	
Moldboard Height	19"	
Moldboard Thickness	1/2" Thick w/Reinforcement Channel	
Kingpin	4-1/2" Solid Steel Bar	
Cutting Edge	1/2" x 6", Reversible & Replaceable; Heat Treated	

* Quick Hitch cannot be used with optional gauge wheels.



- Hydraulic adjustments with cylinders & hoses
- Hydraulic tip storage
- Main frame: fully welded formed box
- Retractable parking stand
- Options: gauge wheels, end panels, skid shoes



Built-in hydraulic hose storage keeps hose tips off the ground.

The essential tool for landscapers.

As America's premier supplier of Landscape Rakes, Land Pride offers light-duty through construction-grade models. Designed for raking rocks, dirt, sand, landscaping and construction debris, our rakes are the landscaper's perfect tool to clean and prepare a site for seeding as well as general maintenance around farms, parks and beaches.



LR1696



LR0560

	LR0548	LR0560	LR1660	LR1672	LR1684	LR1696
Horsepower	15-20 HP		20-40 HP			
Hitch	Cat. 1		Cat. 1			
Working Width (cm)	48" (122)	60" (152)	60" (152)	72" (183)	84" (213)	96" (244)
Angle/Position	5 Forward Up to 30°		7 Forward Up to 45°			
No. of Teeth	26	34	30	36	42	48
Teeth Spacing	1-3/4" Centers		2" Centers			
Teeth Material	High Carbon Spring Steel		High Carbon Spring Steel			
Tooth Size	1/4" x 3/4"		5/16" x 1"			
Rake Height	12"		16-1/2"			
Weight - lb (kg)	98 (44)	113 (51)	241 (109)	270 (122)	291 (132)	316 (143)
Options	N/A		Dual Gauge Wheels 13" x 4" x 6" or 13" x 6.5" x 6" Flip-Down Grader Blade (Must be Used in conjunction with Dual Gauge Wheels)			



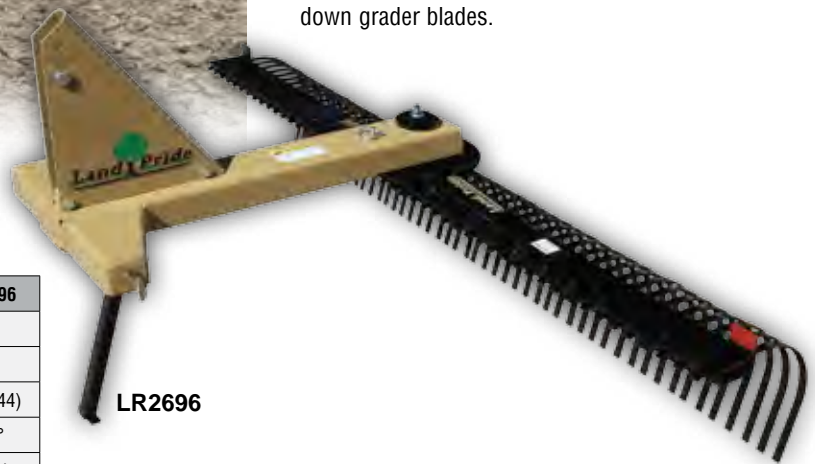


LR3796

A versatile tool for landscapers, cities, parks, and other recreational areas.

Heavier grades for heavier jobs. Spread rock, gather pine needles, or prepare a seedbed.

The LR26 and LR37 Series Landscape Rakes are ideal for spreading rock, moving debris, preparing seed beds, and reshaping soil and/or aggregate profile. The LR26 is designed for tractors up to 60 HP and features a quick-hitch compatible Cat. 1 Hitch and can be ordered with an optional hydraulic angling kit, while the LR37 is designed for tractors up to 80 HP with Cat. 1 or 2 hitch and is also quick-hitch compatible. Available accessories include single or dual gauge wheels and flip down grader blades.



LR2696

	LR2684	LR2696	LR3784	LR3796
Horsepower	25-60 HP		30-80 HP	
Hitch	Cat. 1		Cat. 1 or 2	
Working Width (cm)	84" (213)	96" (244)	84" (213)	96" (244)
Angle/Position	7 Forward Up to 45°		5 Forward Up to 30°	
Offset	N/A	N/A	45° Swing, 24" Offset Manual or Hydraulic	
No. of Teeth	42	48	42	48
Teeth Spacing	2" Centers		2" Centers	
Teeth Material	High Carbon Spring Steel		High Carbon Spring Steel	
Tooth Size	5/16" x 1"		5/16" x 1"	
Rake Height	16-1/2"		16-1/2"	
Weight - lb (kg)	330(150)	348 (158)	460 (209)	483 (219)
Options	Dual Gauge Wheels 13" x 4" x 6" or 13" x 6.5" x 6", Flip-Down Grader Blade, Hydraulic Angle Cylinder		Dual Gauge Wheels 13" x 4" x 6" or 13" x 6.5" x 6", Flip-Down Grader Blade	


Color Options:

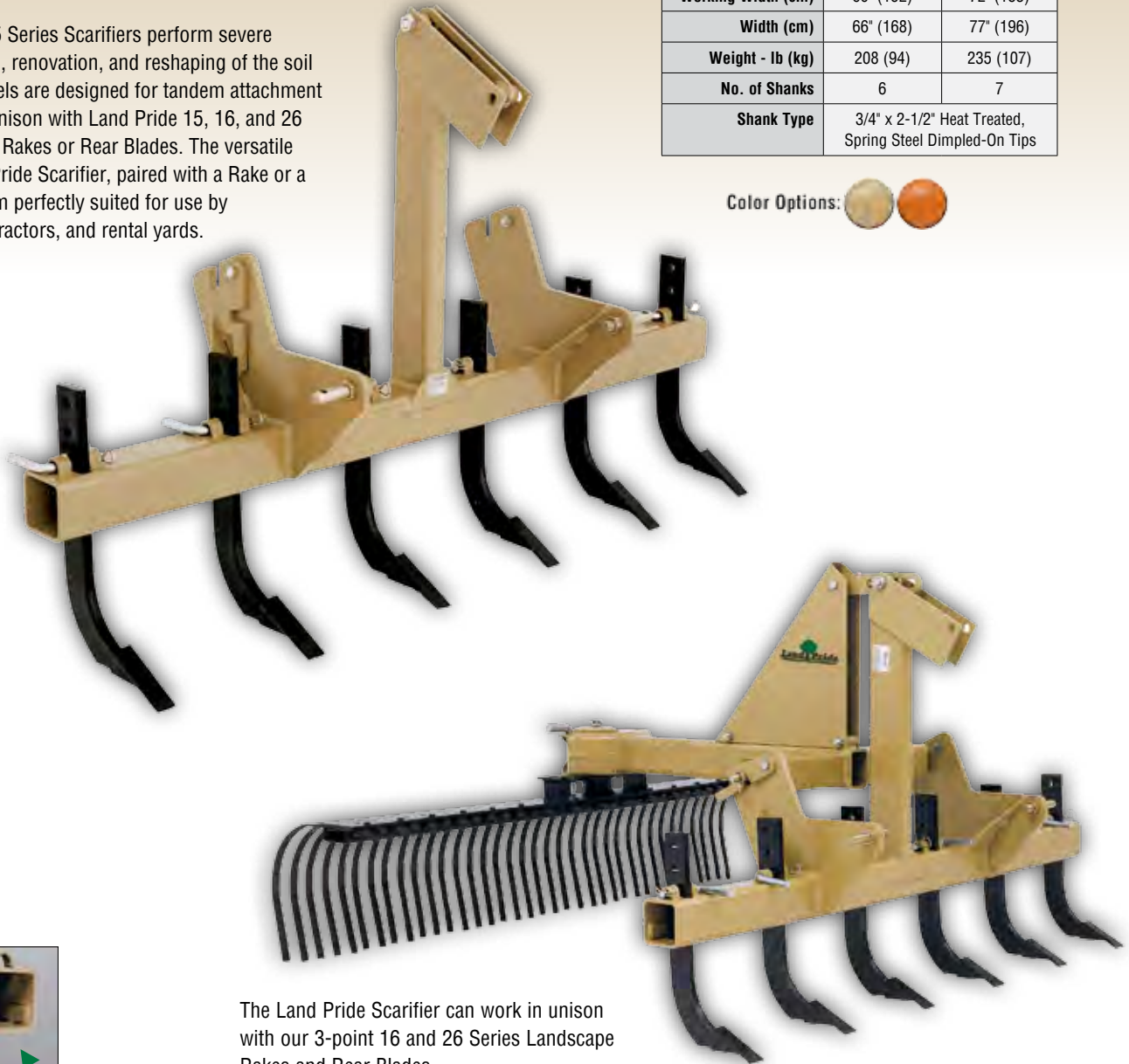


Renovate and reshape.

Land Pride's SF25 Series Scarifiers perform severe ripping, loosening, renovation, and reshaping of the soil profile. Both models are designed for tandem attachment and will work in unison with Land Pride 15, 16, and 26 Series Landscape Rakes or Rear Blades. The versatile action of a Land Pride Scarifier, paired with a Rake or a Blade, makes them perfectly suited for use by landscapers, contractors, and rental yards.

	SF2566	SF2577
Horsepower	25-50 HP	
Hitch	Cat. 1	
Working Width (cm)	60" (152)	72" (183)
Width (cm)	66" (168)	77" (196)
Weight - lb (kg)	208 (94)	235 (107)
No. of Shanks	6	7
Shank Type	3/4" x 2-1/2" Heat Treated, Spring Steel Dimpled-On Tips	

Color Options: 



The Land Pride Scarifier can work in unison with our 3-point 16 and 26 Series Landscape Rakes and Rear Blades.

All Land Pride Scarifiers feature a 5/16" wall thickness on the shank tube for high tensile strength, and a 5/16" x 1" full length reinforcement bar.

Productivity in a small package.

The Land Pride BB05 Series Fixed Bar Box Scrapers are designed for Category 0, 1, and 1 limited 3-point hitch for mounting to subcompact tractors. The Land Pride BB12 Series Box Scrapers are designed for Category 1, 3-point hitch or Quick-Hitch System mounting to tractors up to 30 HP. Both Box Scraper models are ideal for ripping, leveling, finish grading, and backfilling applications at small feedlots, outdoor arenas, building sites, and maintenance operations for small landowners. The manually adjustable ripping shanks and the fore and aft cutting blades make these units especially effective and productive for small projects.



BB05 SERIES

- Forward and Reverse cutting edges
- Rolled moldboard
- Clevis hitch aids in hooking to tractor
- Heat treated shanks with replaceable tips

Color Options:



BB12 SERIES

- Forward and Reverse cutting edges
- Formed moldboard
- Lower clevis hitch aids in hooking to tractor
- Heat treated shanks with replaceable tips



Color Options:

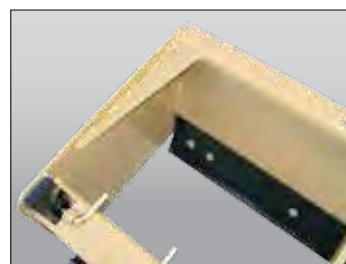
	BB0548	BB0554	BB1248	BB1254	BB1260	BB1266	BB1272
Horsepower	17-25 HP		17-30 HP				
Hitch	Cat. 0, 1 and 1 Limited		Cat. 1				
Working Width (cm)	48" (122)	54" (137)	48" (122)	54" (137)	60" (152)	66" (168)	72" (183)
Height of Moldboard	13-5/16"		15-3/8"				
Side Panel Material	3/16"		3/16" Thick by 16" High				
Depth of Bucket	18-1/2"		23-1/8"				
Weight - lb (kg)	277 (126)	298 (135)	316 (143)	325 (147)	346 (157)	370 (168)	404 (183)
Number of Shanks	4	4	4	4	4	5	6
A-Frame Material	3/8" x 2-1/2" Flat Bar		1/2" x 3"				
Cutting Edges	Two 3/8" x 3" High Carbon Heat Treated Blades, Reversible & Replaceable		Two 3/8" x 6" High Carbon Heat Treated Blades, Reversible & Replaceable				

**Level, finish, grade,
and backfill -
all with one tool.**



Land Pride's BB15 and BB25 Series Fixed Bar Box Scrapers are ideal for ripping, leveling, finish grading, and backfilling applications at feedlots, outdoor arenas, and construction sites, or for maintenance operations on lanes or roadways. Each model offers five different working widths to choose from. The roll-formed moldboard keeps materials flowing putting less drag on the Box Scraper, resulting in lower HP requirements and faster working conditions. The rear-mounted blade allows for backfilling trenches or along foundations.

	BB1560	BB1566	BB1572	BB2560	BB2566	BB2572	BB2584	BB2596
Horsepower	17-40 HP			25-55 HP				
Hitch	Cat. 1			Cat. 1				
Working Width (cm)	60" (152)	66" (168)	72" (183)	60" (152)	66" (167)	72" (182)	84" (213)	96" (244)
Height of Moldboard	17"			17"				
Side Panel Material	5/16"			3/8"				
Depth of Bucket	22"			22"				
Overall Depth	31-1/2"			31-1/2"				
Overall Height	35"			35"				
Weight - lb (kg)	428 (194)	450 (204)	504 (229)	471 (214)	500 (227)	549 (249)	593 (269)	658 (298)
Number of Shanks	4	5	6	5	5	7	7	8
A-Frame Material	1/2" x 3" Flat Bar			1/2" Plate				
Cutting Edges	Two 1/2" x 6" High Carbon Heat Treated Blades, Reversible & Replaceable			Two 1/2" x 6" High Carbon Heat Treated Blades, Reversible & Replaceable				



Side panel gussets reinforce the structural integrity during extreme conditions.



Color Options:    

Color Options:  



Ideal for construction sites and commercial operations.

The beefy 3/8" x 4" x 4" main-frame tube and 3/8" end panels makes our 35 Series Fixed Bar Box Scraper ideal for construction sites and commercial operations or for use by counties and municipalities. Two welded channel braces extend from front to rear of the box plus welded gussets between the side panels and 23" formed moldboard provide exceptional strength under heavy loads. The durable BB35 is comfortable dragging or back-filling.



	BB3578	BB3584	BB3596
Horsepower	45-110 HP		
Hitch	Cat. 1 & 2		
Bucket Capacity - cu. ft. (cu. meter)	30 (.85)	32 (.91)	37 (1.1)
Working Width (cm)	78" (198)	84" (213)	96" (244)
Height of Moldboard	23"		
Side Panel Material	3/8"		
Depth of Bucket	35"		
Overall Depth	44"		
Overall Height	35-1/2"		
Weight - lb (kg)	825 (374)	855 (388)	935 (424)
Number of Shanks	7	7	8
A-Frame Material	1/2"		
Cutting Edges	Two 1/2" x 6" High Carbon Heat Treated Blades, Reversible & Replaceable		

Color Options:  



Choose from manual or hydraulic retractable box scrapers.



MR1572

Color Options:



The easy and convenient retractability of the scarifier shanks on the MR1572 and HR2572 makes them highly productive and ideal for ripping, leveling, finish grading, and backfilling applications at commercial feedlots, outdoor arenas, building sites, and maintenance operations on farm and ranch lanes or roadways or constructions sites.

The roll-formed moldboard keeps materials flowing which puts less drag on the Box Scraper, resulting in lower HP requirements and faster working conditions. Shanks on the MR15 are kept in the up or down position with a positive locking system, keeping the scarifier bar from bouncing in transport and tight during field use.

	MR1572	HR2572
Horsepower	2WD: 20-50 HP 4WD: 25-40 HP	30-60 HP
Hitch	Cat. 1	
Working Width (cm)	72" (183)	
Height of Moldboard	18-1/2"	20-1/2"
Depth of Side Panels	27-1/2"	34"
Side Plate Material	3/8"	
Weight - lb (kg)	615 (279)	851 (386)
Number of Shanks	7	
Cutting Edges	Two 1/2" x 6" High Carbon Heat Treated Blades, Reversible & Replaceable	

- Self locking down position
- Hydraulic raising and lowering of shanks on HR25
- 3 Position shank with replaceable tip
- Rigid backfill blade



HR2572

Color Options:



The hydraulic retractable ripping shanks on the HR25, in combination with the 21" double-thick moldboard design, make these units highly productive for construction projects.



Hydraulic retractable box scrapers, available in highback or lowback.

The HR/HRL35 Series Retractable Box Scrapers meet dirt moving and soil contouring needs of landscapers, contractors, nurseries, sod growers, farmers, ranchers and municipalities. Soil contouring productivity is dramatically increased with utilization of the hydraulically controlled retractable scarifier.

The front blade mounted on the moldboard is ideal for soil redistribution and soil leveling. A second blade mounted on the hinged rear gate further enhances the ability of the Box Scraper to redistribute and level soil. Both the front and rear blades are replaceable and can be flipped over to extend blade life. The HR/HRL35 is used for finishing and fine grading when the hinged rear gate is bolted in place. Unbolt the rear gate and the unit's front blade will penetrate deeper into the soil. Place the tractor in reverse and the rear blade can be used to backfill.



	HRL3578 Lowback	HR3584 Highback
Horsepower	40-65 HP	
Hitch	Cat. 1 & 2	
Working Width (cm)	78" (198)	84" (213)
Height of Moldboard	17"	23"
Depth of Side Panels	30"	
Side Plate Material	1/2"	
Overall Depth	43-1/2"	
Capacity Cu. Ft.	26	31
Weight - lb (kg)	981 (445)	1119 (508)
Number of Shanks	8	
Cutting Edges	Two 1/2" x 6" High Carbon Heat Treated Blades, Reversible & Replaceable	

Color Options:



- Raise and lower shanks hydraulically
- Hardened bushings in upper and lower hitch
- Floating or fixed rear gate
- Heat treated spring steel shanks



A low cost alternative for road grading applications.

The GS15 Series Grading Scrapers are ideal for landscaping, small farms and ranches, hunting camps, large estates, small acreages, and sod farms. The GS25 Series are ideal for renovating gravel driveways and roads, leveling construction and turf sites, and cleaning barns and chicken coups.

Unlike a box scraper, they are not designed to transfer large volumes of dirt from one location to another and as a result do not require the additional horsepower that a box scraper requires. Nor does it require the tending of tractor 3-point lift controls to maintain grade that a box scraper might also require. Simply setting a properly adjusted GS15 or GS25 Series Grading Scraper on the ground and driving forward enables the operator to grade off high spots and fill in ruts and low spots on unimproved roads and lanes with little or no manipulation of the tractors 3-point hitch controls. Unlike a rear blade, they require no adjustment of blade angling or offset positions.

The GS15 and GS25 Series Grading Scrapers simply and quickly move dirt or aggregate from high spots to low spots making them extra user-friendly and a low cost alternative for road grading applications.



Rear cutting blades available as an accessory.



	GS1548	GS1560	GS1572	GS2572	GS2584	GS2596
Horsepower	20-50 HP	25-50 HP		40-90 HP		
Hitch	Cat. 1			Cat. 1 & 2		
Working Width (cm)	48" (122)	60" (152)	72" (184)	72" (183)	84" (213)	96" (244)
Side Panel Thickness	3/16" Thick with 2-3/4" Formed Edges			1/4" Thick with 2-3/4" formed edges		
Front Main Beam & Scarifier Support	4" x 4" x 5/16" Reinforced Heavy Wall Tubing; 2" x 2" x 3/16" Heavy Wall Tubing			4" x 4" x 5/16" Reinforced Heavy Wall Tubing; 3" x 3" x 3/16" Heavy Wall Tubing		
Skid Shoe Dimensions	3/8" Thick x 2-3/4" Wide x 44" Long			3/8" Thick x 2-3/4" Wide x 50-1/4" Long		
Scarifier Shank Construction	Heat Treated 4-Position Shank with Dimpled-on Hardened Tips					
Cutting Edges	Two 1/2" x 6" High Carbon Heat Treated Blades; Reversible & Replaceable					
Cutting Edge Adjustment	Infinite Vertical Adjustment from Level Grade to 1-1/2" Below Grade					
Weight - lb (kg)	437 (198)	511 (232)	594 (269)	728 (330)	796 (361)	864 (392)

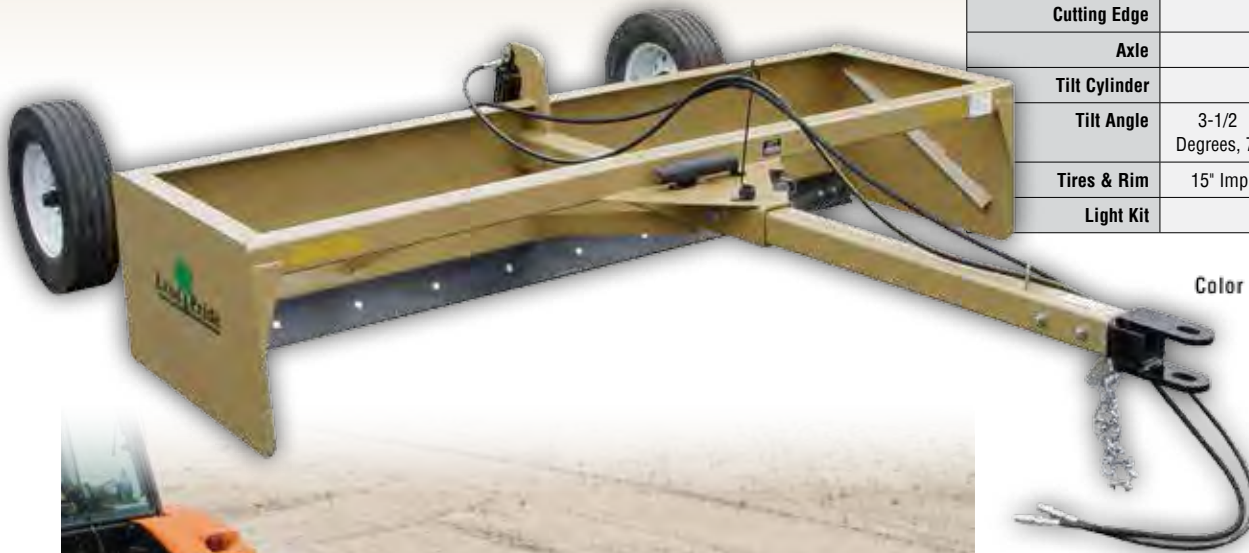
Color Options:



Reshape country roads, waterways and terraces.

Land Pride BB45 Series Pull-Type Drag Scrapers are ideal for moving large quantities of material, leveling, and finish grading. Material can be transferred by dragging it to nearby locations and raising the scraper to deposit the load. Surfaces can be graded and leveled by scraping material from high areas and allowing accumulated material to flow under the grader blade in to lower areas.

	BB4596	BB4510	BB4512
Horsepower	70-130 HP		
Hitch	Pull-type		
Working Widths (cm)	96" (245)	10' (305)	12' (366)
Clevis	Swivel Ball, Clevis or Swivel Clevis		
Tongue	Removable		
Capacity	1-3/4 cu.yd	2-1/4 cu.yd	2-3/4 cu.yd
Dump Clearance	21"		
End Plates	3/8"		
Moldboard	1/4"		
Cutting Edge	1/2" x 6"		
Axle	Fixed or Tilt		
Tilt Cylinder	3" x 8"		
Tilt Angle	3-1/2 Degrees, 7"	3-1/2 Degrees, Approx. 8"	
Tires & Rim	15" Implement Recap; 5 Bolt, 4.5" Rim		
Light Kit	Dual, Optional		



Color Options:



Vertical gussets for superior strength under side loads.

Choose the tilt axle option for shaping slopes, terracing or ditching. The tilt cylinder will raise one side of the drag scraper approximately 8" (7" on BB4596).

- 4" x 4" Square tubing main beam and tongue
- 5" Maximum cutting depth can load the bucket quickly
- Optional tilt allows deep angle cuts in one pass
- Optional weight tray can be filled with 760 lbs. of concrete for additional weight when scraping and moving material

Perfect for garden tractors, zero turn mowers and utility vehicles.

DIRTWORKING

- Optional tailwheels are easily flipped for road or field use.
- Material tray allows for additional weight for better penetration.

Additional weight not included.



Expanded metal weight tray holds additional weight for better penetration, and also allows rain and debris to fall through (CA15 only).

	CA0540	CA0548	CA0556	CA1548	CA1556	CA1564	CA1572
Hitch	Pull-Type			Cat. 0, 1, 1 Ltd.			
Working Width (cm)	36" (91)	44" (112)	52" (132)	41" (104)	50" (127)	58" (147)	66" (168)
Overall Width (cm) (w/Wheels)	50" (127)	58" (147)	66" (168)	48" (123)	56" (142)	64" (163)	72" (183)
Overall Length	38-7/8" (48" w/wheels)			24-7/8"			
Spoon Material	1/2" Hardened Steel			1/2" Hardened Steel			
Spoon Spacing (Fwd Travel)	8-1/2"			6"			
Spoon Penetration	3"			3" - 4-1/2"			
Support Stand	N/A			3 Each			
Gang Assembly	Greaseable			Greaseable			
Transport Wheels	2 Optional			N/A			
Plug Size	1/2"			1/2"			

Color Options:





Optional Water Tanks shown for additional weight to aid in spoon penetration.

- 60" Tanks add up to 490 lbs.
- 72" Tanks add up to 600 lbs.



The 3/4" spoon is beveled to easily penetrate the ground and create a nice clean hole.

	CA2560	CA2572
Hitch	Cat. 1	
Working Width (cm)	60" (152)	72" (183)
Weight - lb (kg) (w/o added weight)	464 (210)	480 (218)
Number of Spoons	96	
Spoons	Replaceable 3/4" closed, case hardened	
Spoon Spacing-In	7" - Forward Travel	
Gang Spacing	5-1/2"	6-1/2"
Number of Gangs	12	
Water Tank Capacity (Gallons per tank)	29	36
Full Water Tank Wt. - lb (kg)	490 (222)	600 (272)
Plug Size	3/4"	

Color Options:



CR25 SERIES STRAW CRIMPER

Keep soil and seed where you put it.

If heat, erosion, or run-off is a problem, crimping straw into the ground needs to be the final step in grass seeding.



	CR2572
Hitch	Cat. 1
Working Width (cm)	69" (175.3)
Overall Width (cm)	80" (203)
Weight - lb (kg)	475 (215)
Height	41"
Number of Discs	12
Disc Spacing	6-1/2"
Flat, Notched Discs Disc Hubs	Heat-treated Greaseable
Cast Iron Hubs	4 Bolt
Storage Stands	4, One in Each Corner
Heavy Tubular Frame	2-1/2" x 2-1/2" x 3/16"
Optional	Water Tanks for Additional Weight
Water Tank Capacity	36 Gallons per Tank
Full Water Tank Weight	600 lbs

Color Options:

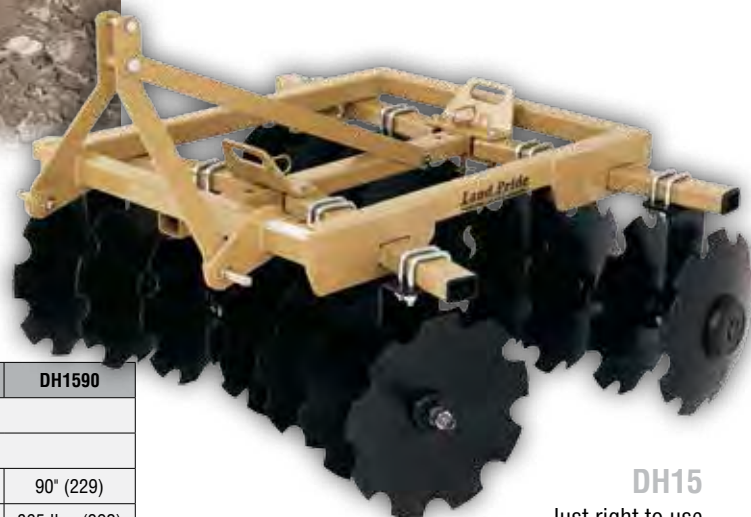


Food plots and small farms... just right for the Land Pride Disc Harrow.



The Land Pride DH10 Series Disc Harrow opens and breaks up the soil surface to help prepare the soil seedbed for planting. The forward gang has aggressive notched discs while the rear gang has a choice of notched or smooth discs to quickly break up and evenly redistribute the finely cultivated topsoil. The DH10 Series Disc Harrows have applications in homeowner landscaping, small nurseries, gardens, small hobby farms, wild game food plots, and medium-duty residential use.

Disc gangs on the DH15 Series can be ordered with smooth or notched arrays for lighter or more aggressive applications based on customer needs. The DH15 is at home in applications from commercial landscaping, nurseries, and large gardens to small farms and municipal



DH15

Just right to use between tree rows or to fill in center-pivot irrigation tracks.

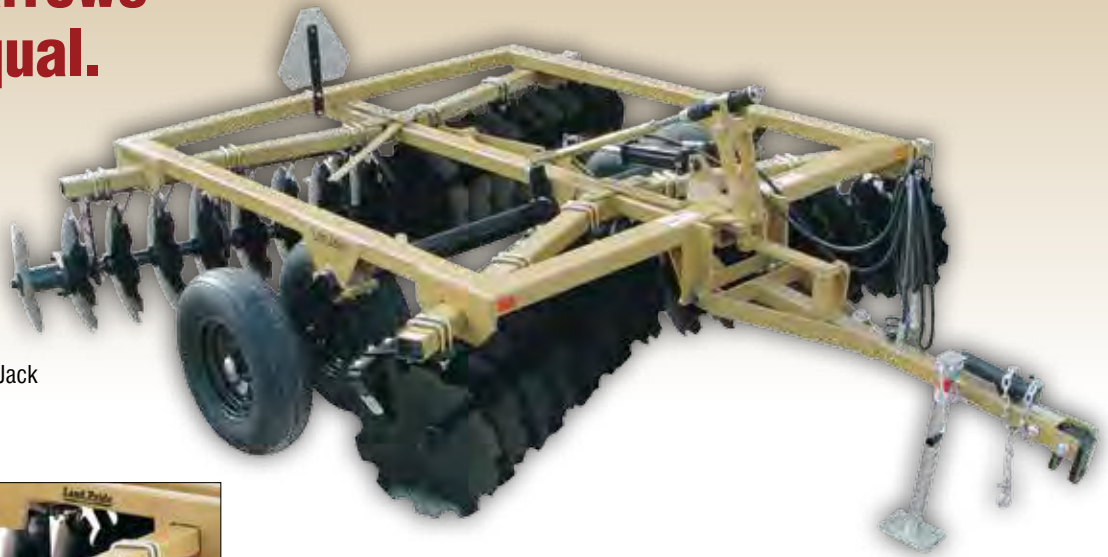
	DH1048	DH1060	DH1560	DH1572	DH1590
Horsepower	Max. 40 HP		Max 65 HP		
Hitch	Cat. 1		Cat. 1		
Working Width (cm)	48" (122)	60" (152)	60" (152)	72" (183)	90" (229)
Weight (kg)	420 (191)	549 (249)	628 lbs. (285)	714 lbs. (324)	865 lbs. (392)
Disc Blade Size	16"	16" or 18"	18" Diameter		
Disc Type	Notched or Smooth		Notched or Smooth		
No. of Disc Blades	12	16	16	20	24
Disc Blade Spacing	7-1/2"		7-1/2"		
Bearing Hanger	3/8" Plate, 5/8" U-bolt		3/8" Plate, 5/8" U-bolts		
Bearing Type	2 per Gang - Self Aligning, Sealed Bearings		2 per Gang - Self Aligning, Sealed Bearings		
Angling	0, 7, 14, 21 Degrees (60° w/Angling Adj Handle)		0, 7, 14, 21 Degrees w/Angling Adjustment Handle		
Frame Tubes	2" Square		2-1/2" Square		
Gang Tubes	3" x 1-1/2"		3" x 2"		
Gang Axle	1" Square, High Carbon Steel		1" Square, High Carbon Steel		
Weight per Disc (kg)	35 (16)	34 (16)	38 lbs. (17)	34 lbs. (15)	36 lbs. (16)
Center Sweep Option	N/A		9" Sweep		
Disc Scrapers	N/A		Optional, Adjustable		

Color Options:



Not all Disc Harrows are created equal.

- Tubular frame instead of angle iron
- Self aligning, sealed ball bearings
- Thick plate steel bearing hangers
- Bearing hangers with 2 U-bolts
- Front and rear leveling
- Optional furrow fillers, disc scrapers, center sweep, SMV Kit, and Tongue Jack



Disc scrapers are available to reduce build-up on discs.



DH25

Heavy-duty 1/2" thick bearing hangers resist the high torque from two 5/8" U-bolts.



DH35

Heavy-duty 5/8" thick bearing hangers resist the high torque from two 3/4" U-bolts.

	DH2572	DH2596	DH3510	DH3512
Horsepower	40-100 HP		45-100 HP	
Hitch	Cat. 1 & 2		Pull-type Hitch with Clevis	
Working Width (cm)	72" (183)	96" (244)	10'6" (320)	12' (366)
Weight - lb (kg)	947 (430)	1143 (518)	2491 (1130)	2747 (1246)
Disc Blade Size	20" or 22" Diameter		20" or 22" Diameter	
No. of Disc Blades	20	24	28 or 32	32 or 36
Disc Blade Spacing	7-1/2"		7-1/2" or 9"	
Bearing Hanger	1/2" Plate, 2 Each 5/8" U-bolts		5/8" Plate, 2 Each 3/4" U-bolts	
Bearing Type	Self Aligning, Sealed Bearings 2 per Gang		Self Aligning Bearings 3 to 4 Bearings per Gang	
Front Gang Angling	0, 7, 14, 21 Degrees		Front: 15, 18, 21 Degrees	
Rear Gang Angling	7, 14, 21 Degrees		12, 15, 18 Degrees	
Frame Tubes	3" Square		3" x 5"	
Gang Tubes	4" x 3"		3" x 5" x 1/4" Wall Tubing	
Gang Axle	1-1/8" Square, High Carbon Steel		1-1/8" Square, High Carbon Steel	
Weight per Disc - lb (kg) 7-1/2" Spacing	47 (21)	48 (22)	79-84 (36-38)	76-82 (34-37)
Weight per Disc (kg) 9" Spacing	51 (23)	52 (24)	87-93 (39-42)	81-86 (37-39)
Transport Tires	N/A		2 Std. 9.5Lx15, 4 Optional	
Center Sweep Option	9" Sweep		9" Sweep	
Disc Scrapers	Optional, Adjustable		Optional, Adjustable	



Color Options:



Quickly create channels for small irrigation ditches.

The DT35 Ditcher features a standard 1" ripper shank, adjustable impeller head, and reversible/replaceable cutting edges. The DT35 quickly creates channels for small irrigation ditches and for efficiently diverting water from unwanted areas.



	DT35
Horsepower	30-60 HP
Hitch	Cat. 1 & 2, Quick-Hitch Adaptable
Impeller	4 Adjustable Blades with Replaceable Cutting Edges
Impeller Settings	16" Narrow Trench; 18" Wider & Deeper Trench
Driveline	Cat. 4 with Shearbolt
Material Control Deflector	Manual
1" Ripper Shank	Standard
Drive Chain	#80 Roller Chain Fully Enclosed in Oil Bath
Chain Tightener	Easily Accessible
Storage Stands	Standard
Depth Controlling Skid Shoe	Replaceable, 3/8" Thick

Color Options:



A versatile tool to use in many water control applications.

Cleaning water ditches along roadsides or in farm fields to drain standing water away from crops, the DT55 Ditcher makes it simple. The 20" impeller leaves a clean and sculptured trough to keep water flowing freely from unwanted areas. With the Material Control Chute in place, dirt can be placed just next to the machine, or thrown many feet away to reshape terraces.



	DT55	DTM55
Horsepower	60-150 HP	
Hitch	Cat. 2 & 3	
Tractor PTO	540 rpm	1000 rpm
Weight - lb (kg)	900 (408) (w/o options)	
Impeller	20" Reinforced	
Impeller Blades	6 ea, 3/8" Thick Replaceable Hardened AR400 Material	
Lubricated Chain Drive	Double 80 Chain with Spring Loaded Idler	
Input/Output Shafts	2-1/4" ID Ball Type Bearings	
Driveline	Cat. 5 with Shear-Bolt	
Material Control Chute (Optional)	Manual or with 2" x 8" Hydraulic Cylinder & Hoses	
Depth Control Wheel (Optional)	16.5 x 6.50-8 Pneumatic Tire; Adjustable from Cutting Edge Height to 10" Below	
Ripper Shank (Optional)	3 Height Adjustments; Cutting Edge Depth to 5" Below	
Skid Shoe (Optional)	3/8" Thick, Replaceable	
Parking Stands	Dual Parking Stands for Storage Stability	

Color Options:



Some early models not QH adaptable

OPTIONS

- Rear skid shoe helps control depth
- Material chute puts dirt where you want it
- Ripper shank tears through hard packed soils moving smaller material into the impeller path
- Gauge wheel for depth control



Fracture hardpan up to 23" deep.

Land Pride's heavy-duty 3-point RS15 and RS20 Ripper Shanks are tillage tools perfect for fracturing compacted hardpan. The single-shank RS15 and dual-shank RS20 are capable of ripping the soil up to 23" deep. Both models features high carbon 1.25" heat treated steel shank(s), heat-treated replaceable tips, shear pin protection, and a Cat 1 and 2 3-point hitch. The RS20 also features adjustable row spacing to be just right for your application.



RS15

NEW!

	RS15	RS20
Horsepower	35-85 HP	70-110 HP
Hitch	Cat. 1 & 2 3-Point (Quick Hitch compatible)	
Width	40-5/8"	49"
Row Spacing	-	Up to 42"
Weight - lbs.	210	332
Number of Shanks	1	2
Ripping Depth	24"-27"	
Park Stand	Standard	

Color:



RS20



Tackle seedbed prep, soil aeration and weed control; all in one tool

The new Land Pride FC10 is a single row 3-point Cat. 1 C-tine Field Cultivator for use by hobby farmers or gardeners. It features 6 spring steel C-tines, reversible and replaceable heat-treated tips, adjustable row spacing, and durable formed steel frame. Working width is 48" up to 57".

The Land Pride FC15 is a 3-point, 3-bar, 13-tine Field Cultivator that tackles a number of tasks in the field, including seedbed preparation, soil aeration, and weed control, just to name a few. The cultivator features 13 S-tines, or Danish tines, with reversible and replaceable tips, a Cat. 1 hitch, 2" x 2" square tube frame, adjustable tine spacing, and a 4" working depth. The FC15 also features bolt on extensions to expand the working width from 72" to 96", an industry exclusive! An available hitch allows you to pull Land Pride's DRG06 & DRG08 Drag Harrows.



FC15



FC10

	FC10	FC15
Horsepower	25-45 HP	up to 50 HP
Hitch	Cat. 1 Quick-Hitch compatible	
Working Width	48" up to 57"	72" Optional extensions create 96" working width; LP exclusive
Working Depth	4"	4"
Frame Construction	Formed steel angle	2x2 Square tubing
Upper Support Brace	Formed out of heavy plate	
Tines	C-tines Heat-treated 3/8" spring steel. Shanks can be adjusted 4-1/4" horizontally in 2-1/8" increments	S-tines, Heat-treated, 1/2" spring steel
Tine Spacing	Adjustable	
Tine Tips	Adjustable, reversible & replaceable	Reversible and heat-treated



Ideal for initial cultivation of soil

Land Pride MP10 and MP20 Moldboard Plows are ideal for small acreage farms or large gardens. These plows are the ideal tool for initial cultivation of soil to prepare for planting or when deeper tillage – more than a field cultivator can provide – is required. Both models are equipped with replaceable 14" shares, shins, and landsides for easy maintenance. The MP10 and MP20 frames feature a 1" x 4" steel trailing arm and cross member, as well as a Cat. 1 3-point hitch.



MP20



MP10

The optional coulter allows for a smoother furrow edge and helps reduce slightly the drag on the moldboard.

	MP10	MP20
Horsepower	2 Wheel drive: 20 to 60 HP 4 Wheel drive: 20 to 50 HP	
Hitch	3-Point Cat. I	
Cutting Width	14"	27-1/2"
Working Depth	Max. 7" (depending on soil conditions)	
Weight - lb (kg)	294#	513#
Construction	1" x 4" Bolted Steel Frame	
Park Jack	Standard	N/A
Number of Bottoms	(1) 14" Bottom	(2) 14" Bottoms
Plow Shank Shear Bolt	7/16"-14 x 3" GR8 share bolt	
Moldboard & Shin Thickness	5/16"	
Frog & Landslide Thickness	1/2"	
Coulter - Optional	14" Diameter coulter with greasable 1-1/4" roller bearings	



Designed with a twist to lift while fracturing the soil sideways.



Land Pride's AR25 Series pull-type Pasture Aerators are ideal in agricultural conservation tillage and pasture renovations. The heavy-duty, knife-like tines on the aerator are designed with a twist in them to break-up compacted soil horizontally and vertically as they slice into the ground in a twisting fashion. This breaking action conditions the soil to soak up run-off water faster, allow fertilizer to penetrate deeper into the ground, and increase oxygen and water supplies to the plant roots.



Cylinder stops storage area.



	AR2596	AR2510
Horsepower	40-90 HP	
Hitch	Pull-type	
Working Width (cm)	7'2" (218)	9'8" (295)
Overall Length	10'11"	
Clevis	Double Tang	
No. of Tines	48	64
Rotor Angle	2-1/2, 5, 7-1/2 Degrees, 2 Bolt Adjustment	
Tine Spacing	7-1/2"	
Bearings	Triple Lip Seal and Heavy Duty Bearing Hanger	
Tire Size	9.5Lx15-8 Ply	
Wheel Hub	6 bolt	
Optional Weights	Up to 3 - 740 lbs Each	Up to 4 - 740 lbs Each

Color Options:



- 8" Maximum tine penetration for aerating the soil
- 9" Forged & heat treated through steel tines are very resistant to wear and breakage giving them a long life
- Heavy duty rotary tine hangers are designed to stand up to the rigors of hard rocky soil
- Optional concrete weights help aerator tines penetrate the ground

Two sizes: Perfect for DIY!



The PD10 and PD15 Series Post Hole Diggers are just right for 3-point attachment to Cat. 1 subcompact utility tractors. These units offer a 30" or 48" auger length and a choice of 6", 9", & 12" auger flights with cast steel fishtail tips for quick piloting and faster hole starting. Landscapers, rental yards, contractors, farmers, ranchers, and homeowner will find that the PD10 or the PD15 meets their general duty needs and applications.

SUBCOMPACT TRACTORS

	PD10
Horsepower	15-30 HP
Hitch	Cat. 1
Yoke (cm)	2-7/8" (7.30) Tubing
Boom (cm)	2-7/8" (7.30) Tubing
Output Shaft (cm)	2" (5.08)
Input RPM	540 Tractor at 300 RPM
Driveline	Category 2
Component Protection	Shear-Bolt
Max Auger RPM	96
Auger Length	30"
Auger Sizes	6", 9" or 12"
Fighting Thickness	1/4"
Options	Hydraulic Cylinder Down Pressure Kit (Applies approx. 500 lbs. of Force) [^] , Auger Alignment Handle, Storage Stand

See dealer for complete warranty information.

[^]May not work in some cab applications.

Color Options:



Storage Stand

Manhandling a Post Hole Digger by yourself is next to impossible. With our innovative Post Hole Digger stand, one person hook and unhook becomes a reality!

	PD15
Horsepower	20-40 HP
Hitch	Cat. 1
Yoke (cm)	2-7/8" (7.30) Tubing
Boom (cm)	2-7/8" (7.30) Tubing
Output Shaft (cm)	2" (5.08)
Input RPM	540 Tractor at 300 RPM
Driveline	Category 2
Component Protection	Shear-Bolt
Max Auger RPM	94
Auger Length	48"
Auger Sizes	6", 9" or 12"
Fighting Thickness	1/4"
Options	Hydraulic Cylinder Down Pressure Kit (Applies approx. 500 lbs. of Force) [^] , Auger Alignment Handle, Storage Stand

^{*}See dealer for complete warranty information.

[^]May not work in some cab applications.

Color Options:



Additional power for those tougher jobs.



Land Pride PD25 and PD35 Series Post Hole Diggers are a good fit for heavy-duty applications. Landscapers, contractors, ranchers, and other land owners will appreciate the rugged dependability and the quality construction – these PDs will take a beating and last for years. Both are designed for Category 1 or 2 three-point attachment, offer a 48" auger length, and a choice of 6", 9", 12", 15", 18" or 24" auger flights with cast steel fishtail tips.

	PD25	PD35
Horsepower	25-55 HP	30-75 HP
Hitch	Cat. 1 or 2	
Yoke (cm)	2-7/8" (7.30) Tubing	
Boom (cm)	3-1/2" (8.89) Reinforced Tubing	
Output Shaft (cm)	2" (5.08)	
Input RPM	540 Tractor at 300 RPM	
Driveline	Category 3	
Component Protection	Shear-Pin or Radial Pin^^	
Max Auger RPM	94/75	
Auger Length	48"	
Auger Sizes^	6", 9", 12", 15", 18" or 24"	
Flighting Thickness	1/4"	
Options	7" or 14" Auger Extension Hydraulic Cylinder Down Pressure Kit** (Applies approx. 500 lbs. of Force) Auger Alignment Handle, Storage Stand	

*See dealer for complete warranty information.

^Radial Pin recommended on auger sizes of 15" and above.

^^May not work in some cab applications.

Color Options:



Cast steel teeth are replaceable, and positioned for maximum digging performance.

The economical answer to your post hole needs.



MOUNTING OPTIONS

The HD25 and HD35 Post Hole Diggers are available with a universal quick attach mount, a hydraulic driven, 3-point tractor mount, or a bucket mount.



Land Pride offers a variety of augers ranging from 6" - 24", with a 36" tree auger.

The HD25 and HD35 Series Post Hole Diggers are hydraulically driven and accommodate augers ranging from 6" to 24" in diameter. They are available with a universal quick attach mount, a bolt-on mount for mounting to the side of a bucket on a tractor front-end loader, or with a boom for mounting to a category 1 or 2 three-point hitch, and meet the heavy duty needs of nurseries, landscapers, contractors, construction companies, ranchers, and land managers. The HD35 will deliver up to 1,605 ft.lbs of torque when industrial-duty is preferred. You can also reverse the auger direction, easing the strain on the auger when extracting it from the ground. Available in HD25 or HD35 Series.

	HD25	HD35
Hydraulic GPM Range	5-12 GPM	10-25 GPM
Hitch	Cat. 1 or 2, or Front Loader Bucket Mount	
Yoke (cm)	2-7/8" (7.30) Tubing	
Boom (cm)	3-1/2" (8.89) Reinforced Tubing	
Output Shaft (cm)	2" (5.08)	
Drive	Hydraulic	
Hydraulic Hose	Standard on 3-Point; 2 Each 24' Length on Bucket Mount	
Max Auger RPM	101	93
Auger Length	48"	
Auger Sizes^	6", 9", 12", 15", 18" or 24"	
Flighting Thickness	1/4"	
Options	Hydraulic Cylinder Down Pressure Kit on 3-Point^^, 3-Pt Storage Stand 7" or 14" Auger Extension QA Mount w/8' or 24' Hoses	

*See dealer for complete warranty information.

^Radial Pin recommended on auger sizes of 15" and above.

^^May not work in some cab applications.

3-Point

Color Options:



Add versatility to your loader.



Land Pride's SA20 is a lighter planetary drive Post Hole Digger ideal for land owners, landscapers, hobby farmers, or contractors.

The SA20 digs holes from 9" to 36" in diameter and up to 48" deep or deeper with available auger extensions. With 10 different augers available - 7 double flight augers from 9" to 36" and 3 tree augers in 24", 30", and 36" sizes - the SA20 is a versatile and dependable tool.

	SA20
Hitch	Universal Quick-Attach
Output Shaft (cm)	2" (5.08) Hex
Weight - lb (kg)	162 (73)
Drive	Hydraulic
Hydraulic Requirements	6-30 gpm
Hydraulic Hose	Optional
Max Auger RPM	110
Auger Length	50-3/4" (9" is 49" length)
Auger Sizes	9", 12", 15", 18", 24", 30" or 36"
Tree Auger	24", 30" or 36"
Flighting Thickness	5/16"
Options	8' or 24' Hose, Flat Face Couplers, Skid/Loader Plate, 3 Motor Options, Auger Extensions

Land Pride's 36" auger is perfect for planting ball-rooted trees.



*See dealer for complete warranty information.

Color: 



The ideal tool for seedbed preparation.

Land Pride's PR16 Series Powered Rake is a multi-functional seed bed and soil surface preparation tool for landscapers and turf care professionals, capable of grading, leveling, shaping, cultivating, renovating, and pulverizing various types of soil surfaces. They are also capable of raking or windrowing soil, rocks, and construction site debris. The 60" or 72" working widths are a good choice for smaller landscaping and turf renovation jobs, while the 90" model is perfect for larger commercial jobs.



	PR1660	PR1672	PR1690
Horsepower	25-40 HP		35-75 HP
Hitch	Cat. 1		Cat. 1 or 2
Working Width (cm)	60" (152)	72" (183)	90" (228)
Gearbox	540 RPM, Ball Bearings, Cast Iron Housing, Drain Plug		
Primary Driveline	Cat. 4 Heavy-Duty		
Secondary Driveline	Cat. 4 with Slip-Clutch		
Material Control Deflector	1/2" x 5", Hard Urethane		
Roller	9-3/8" Diameter, w/ 3/4" x 1-1/2" Carbide Tipped Studs		
Drive Chain	#50 Double Continuous Roller Chain, High Tensile, Enclosed in Oil Bath		
Angle Adjustment	15° Left and Right - Hyd. or Manual		
Angle Cylinder	2" x 8"		
End Plates	Standard		
Gauge Wheels	60: 13" x 6.5" 72 & 90: 16.5" x 6.5" Air Tires with Sealant and 3/4" Roller Bearings and Spacer Height Adjustment		
Skid Shoes	Replaceable		
Machine Weight - lb (kg)	980 (445)	1,000 (454)	1,150 (522)

*See dealer for complete warranty information.

Color Options:



Ideal for leveling and seedbed preparation.

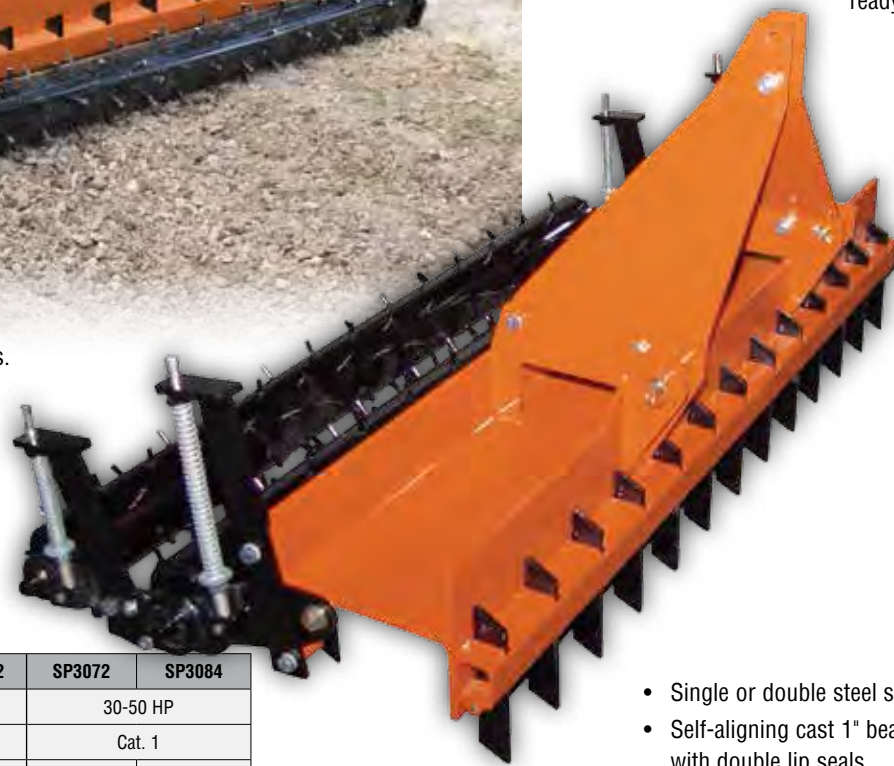


3/8" Steel spikes are welded to the roller's surface and feature replaceable wear sleeves.



Aggressive Reversible Scarifier Shanks

10 1/2" x 2" x 1/2" Scarifier shanks aggressively rip crusted soils, enabling the steel spiked roller to break down the soil to a perfect consistency ready for planting.



	SP2060	SP2072	SP3072	SP3084
Horsepower	25-35 HP		30-50 HP	
Hitch	Cat. 1		Cat. 1	
Working Width (cm)	60" (152)	72" (182)	72" (182)	84" (213)
H-Beam	10"		12"	
Weight - Sgl Roller - lb (kg)	491 (223)	561 (255)	671 (305)	721 (328)
Front to Back Length - Single Roller	25-1/2"		28-1/4"	
No. of Scarifier Shanks	21	25	25	29
Shank Spacing	2-13/16"		2-13/16"	
No. of Spikes on Sgl Roller	86	103	103	116
No. of Spikes on Dbl Roller	N/A	N/A	206	232
Spiked Roller Tube Diameter	5-9/16" O.D.		6 5/8" O.D. Optional 2nd Roller 5-9/16"	
Roller Spike Material	3/8" x 1-1/4" Steel, Replaceable Heat Treated		3/8" x 1-1/4" Steel, Replaceable Heat Treated	
Springs	32 lbs/inch		Front Roller: 32 lbs/inch Rear Roller: 5 lbs/inch	

- Single or double steel spiked roller
- Self-aligning cast 1" bearings with double lip seals
- 1" Diameter shaft in roller

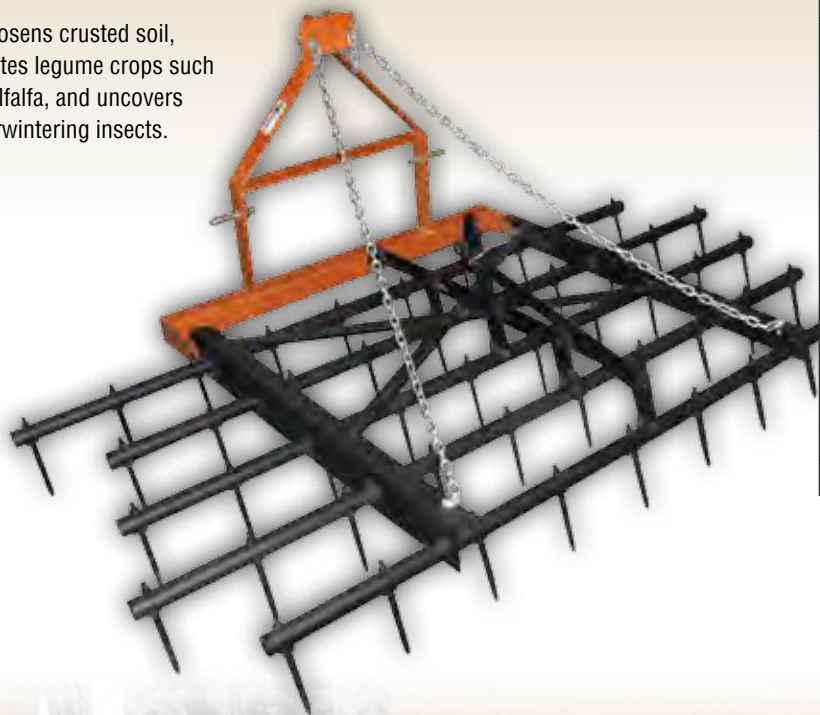
Color Options:  



Renovate, aerate, or rake.

The STH15 Series Spike Tooth Harrow cuts through clods, manure, and grasses to break up material into finer pieces so that it can be spread evenly across the ground. This harrow does an excellent job of smoothing garden plots, fields, arenas, and landscaping areas.

It loosens crusted soil, aerates legume crops such as alfalfa, and uncovers overwintering insects.



	STH1590	STH2024
Horsepower	20 HP Min.	45 HP Min.
Hitch	Cat. 1	Pull-type
Working Width (cm)	7'6" (229)	23'7" (719)
Transport Width	7'6"	8'6"
Transport Height	35-3/4"	8'8"
Transport Length	53"	15'
Field Length	53"	23'
Weight (kg)	224 (102)	2,100 (907)
Transport Tongue Weight	N/A	432 (196)
Tooth Spacing	9"	9"
Teeth on Ground (per foot)	7	12
Tooth Size	Diamond Shaped Forge Hardened 6" x 2-1/2"	Diamond Shaped Forge Hardened 6" x 2-1/2"
No. of Teeth	50	244
Tooth Angle	10 Different Angles	22 or 40 Degrees
Bars	5	8
Bar Material	1-11/16" OD	1-11/16" OD
Wing & Transport Tires	N/A	205R15
Hydraulic Fold	N/A	Standard

Color Options:



STH15 Only



The STH20 Series Spike Tooth Harrow can be used to spread manure, grass clippings, leaf litter, previous crop stubble, and gravel driveways; it can better incorporate fertilizers, herbicides, granular products, and broadcast seed into the soil. It also helps to remove gopher mounds, ant hills, ridges from tillage implements, sticks, and small limbs from grassy areas.



Quickly turn limbs into mulch or to aid in decomposition.



WC1503

Adjustable support stands help elevate the Wood Chipper to match the height to your tractor's output shaft, enabling the driveline to remain straight and level.



Adjustable discharge spout rotates 270 degrees.

Land owners can utilize Land Pride's WC1503 3-point mounted Wood Chipper to quickly turn mountains of limbs into chips for mulch or just to aid in decomposition. Driven by the tractor's PTO, this unit features a self-feeding 3" cutting capacity, two reversible and replaceable hardened-steel knives, adjustable discharge chute, and dual B-section drive belts.

The WC1504 features a self feeding 4" cutting capacity, 4 reversible and replaceable hardened steel knives and adjustable discharge chute. The WC1504 features direct drive to the rotor. Both models offer adjustable support stands to better match your tractor.



WC1504

	WC1503	WC1504
Horsepower	12-30 HP Min. 25 HP for Max. Capacity	20-50 HP Min. 35 HP for Max. Capacity
Hitch	Cat. 1 Quick-Hitch Compatible	
Upper Hitch Plate Thickness	1/4"	5/16"
Main Frame Thickness	3/16"	
Weight - lbs (kg)	369 (167)	450 (204)
Rotor Housing Thickness	3/16"	
PTO Speed	540 rpm	
Driveline Category	Cat. 2 Shear-bolt	Cat. 4 Shear-bolt
Main Drive Pulley Diameter	16.35"	N/A-Direct Drive
Rotor Pulley Diameter	4-1/2"	N/A-Direct Drive
Belts	2 Single B section	N/A-Direct Drive
Belt Tensioner	Spring Loaded w/ Adjustment	N/A-Direct Drive
Rotor Size	17-1/2"	25"
Rotor Speed	1984 rpm	540 rpm
Chip Capacity	3"	4"
Hopper Inlet Opening	14" x 15"	20" x 20"
Chipper Inlet Opening	6" x 3"	10" x 4"
Spout Discharge Opening	3-1/4" Square	5-1/4"
Cutting Knife	Reversible and Replaceable	
Number of Knives	2	4
Knife Size	2-1/2" x 2" x 1/4"	6" x 2" x 1/4"
Knife Material	Hardened Steel	
Feed System	Self Feed	
Feed Height Above Ground	35" (No Skids)	24"-30" w/ Adjustable Support Stands
Chip Chute Position	270 Degrees	

Color Options:  



Knives are reversible and replaceable.

Engineered for Sub-compact Tractors.

Land Pride's new QH05 Quick Hitch is specifically engineered for sub-compact tractors. The QH05 allows you to quickly connect to or disconnect from over 20 Land Pride products – most without leaving the tractor seat. Owners of sub-compact tractors will find that the Land Pride QH05 speeds implement changes, allowing more time to get chores completed.



*Patents Pending



For a complete list of compatible Land Pride implements, scan QR code or visit landpride.com/QH05



**The QH05 does not increase the lifting capacity of your sub-compact tractor. Refer to your tractor owner's manual for lifting capacity.*

The True Timesavers.

Our Quick-Hitch Systems, designed in accordance with ASAE specifications, fit most Land Pride products and are a real time saver when working on multiple projects. Look for this Quick-Hitch System logo to denote applicable products throughout our product line.



	QH05	QH15	QH20
3-Point Hitch	Cat. 1, Sub-Compact*	Cat. 1	Cat. 2
Overall Width (cm)	32-5/8" (81)	32-5/8" (81)	40" (102)
Overall Height	20-1/4"	23-1/4"	23-5/8"
Overall Length	6-1/2"	9"	8-7/8"
Weight lbs (kg)	37 (17)	70 (32)	120 (54)
Automatic Lock	Auto Lock with Quick Release		
Optional	Floating Top Link Attachment Optional		

Color Options:   

*PTO driven implements may need a longer driveline. Please consult our Service & Parts Department for longer profile availability.



Implement hitch



QH15

QH20

An optional link is available for implements that have a swiveling top link.





Expand your material handling capabilities with forks from Land Pride.

Land Pride's bucket-mounted PF Series of Pallet Forks transforms your tractor bucket loader into a forklift. With 1,000 and 2,000 lb capacities, the PF10 and PF20 quickly attach and detach adding versatility to your loader.

PFL and PFLE Series Pallet Forks from Land Pride are great for retail operations, nurseries, and farms; the heavy-duty PFL64 Series is at home on construction and industrial sites. The PFL models mount to the front loader plate of your tractor and PFLE Models mount to your Euro Hitch, effectively changing your loader into a forklift and increasing your material handling capabilities. With capacities from 2,100 lbs to 6,400 lbs, you will quickly find these attachments save you time and labor!

BUCKET MOUNTED

	PF10	PF20
Hitch	Bucket Mounted	
Lift Capacity - lb (kg)	1,000 (454)	2,000 (907)
Tine Length	31-5/8"	35-5/8"
Weight - lb (kg)	55 (25)	65 (29)
Tine Width	3"	
Tine Height	2"	
Threaded Clamp Rod	1-1/4" - 7"	
Throat Opening	1-1/2"	
Throat Depth	10-3/4"	
Sliding Clamp Handles	9" Arm Length (Center of Screw to End of Arm)	

Color: 

UNIVERSAL QUICK-ATTACH OR FRONT LOADER PLATE

	PFL2042	PFL3042	PFL3048	PFLE4548	PFLE5548	PFLE5560	PFL6448 PFLE6448	PFL6460 PFLE6460
Hitch	Universal Quick-Attach			Euro Hitch			Universal Quick-Attach or Euro Hitch	
Lift Capacity -lb (kg) (per set of 2)	2,100 (952)	3,000 (1,360)	3,000 (1,360)	4,500 (2,041)	5,500 (2,494)	5,500 (2,494)	6,400 (2,902)	6,400 (2,902)
Tine Length	42"	42"	48"	48"	48"	60"	48"	60"
Frame Width w/Step	50"			50"	50"	50"	64-1/2"	64-1/2"
Weight - lb (kg)	330 (150)	340 (154)	358 (162)	412 (187)	436 (198)	482 (219)	686 (311)	744 (337)
Tine Width	4"			4"	4"		4-3/4"	
Tine Height	1"	1-1/4"	1-1/4"	1-1/2"	1-3/4"		1-3/4"	



Color: 



- Spring loaded toggle fork position lock
- 3/16" Backframe guard
- Removable top center bracket for walk through



Easy handling of round or square bales

The BS Series Bale Spears can be attached to CTLs, skid steers, or tractor loader arms fitted with a skid mounting plate. BSE units fit the Euro-Hitch plates. The BSR Series are 3-point Bale Spears for moving large, heavy, round or square bales. All units are American-made and have a 1-year limited warranty.

	BS(E)10	BS(E)20	BS(E)30	BS(E)40	BS(E)50
Mount	Universal Quick-Attach or Euro Hitch				
Lift Capacity - lb (kg) 24" from face of frame	1,800 (817)	2,500 (1,134)	3,000 (1,360)	3,000 (1,360)	4,000 (1,814)
Usable Spear Length	45" 19" Stabilizer	45"	28", 35", & 45"	28", 35", & 45" 19" Stabilizer	28", 35", & 45"
Max. Weight - lb (kg)	168 (76)	208 (94)	228 (103)	242 (110)	286 (130)
Stabilizer Extension - lb (kg)	N/A	N/A	70 (32)		
Stabilizer Extension Height	N/A	N/A	61.4"		
Spear Construction	Forged				



	BSR10	BSR20	BSR30	BSR40
Mount	3-Point, Cat. 1 or 2	3-Point, Cat. 2 or 3		
Lift Capacity - lb (kg) 24" from face of frame	1,800 (817)	3,000 (1,360)	3,000 (1,360)	4,000 (1,814)
Usable Spear Length	44" Upper 19" Lower	44"	32" Option: 28" 39" Option: 34" 43" Option: 44"	44"
Number of Spears	3	2	3	4
Max. Weight - lb (kg)	112 (51)	152 (69)	165 (75)	252 (114)
Spear Construction	Forged			



Color: 



Quickly handle big jobs.

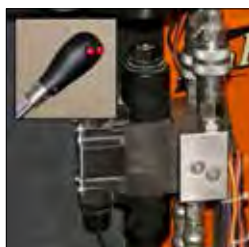
Move brush, clean stalls, lift debris, and so much more with Land Pride's SGC0548 Claw Grapple. The SGC05 will make chores a breeze. Easily grasp, lift, and move a variety of materials making property maintenance easier and less time consuming.

Our SGC05 tines are manufactured from high-tensile AR400 Steel to make sure it stands up to demanding use. For added strength, the frame is made of 2" x 3" rectangular tubing. And it carries the Land Pride name, so you know quality is built in.



	SGC0548
Mount	Kubota BX Quick Hitch System or pin direct to loader arms
Width	48"
Weight - lbs (kg)	156 (71)
Closed Height	26-1/2"
Number of Bottom Teeth	6
Number of Top Teeth	5
Teeth Spacing	9-3/8"
Tooth Thickness	1/4"
Working Length of Teeth	8-3/8"
Jaw Opening	30"
Tine Material	AR400

Color:



Land Pride 3rd Function Valve accessory kit adds versatility to your tractor. (380-137A)



Convenient Park Stand provides stability while storing, simplifying attachment and detachment.



The frame is built from 2" x 3" rectangular tubing for added strength.

Four tools in one to increase versatility.

Land Pride's new 4-n-1 Combination Bucket, specifically designed for Kubota BX Tractors, increases the versatility of the front loader. As the name implies, 4-n-1 Buckets are designed to act like 4 attachments – dozer blade, scraper blade, grapple, and bucket.

The CB0550 Combination Bucket fits Kubota 60 and 70 Series BX Front Loaders. It features dual 2 x 6 cylinders, 1" jaw pivot points, 30" jaw opening, spill screen, reinforced side plates, and optional 3rd function valve. It weighs approximately 260 lbs. so lifting capacity of the tractor is not greatly diminished.

	CB0550
Horsepower	Up to 28 HP
Mount	Fits Kubota 60 & 70 Series BX Tractors only
Width	50"
Weight - lbs (kg)	266 lbs (121)
Max. Jaw Opening	30"
Bucket Depth	21"
Cutting Edges	3/8" x 3"
Side Panels	3/16"
Bottom and Back Plate	10 Gauge
Hydraulic Cylinder	2 Qty, 2" x 6" x 1-1/8"
Hydraulic Cylinder Rating	2,500 PSI
Hinge Points	1" Pins

Color:



Add versatility to your Compact Tractor.

The SGC06 will move brush, rocks and debris, making chores a breeze. Just like our popular SGC0548, this grapple allows you to easily grasp, lift, and move a variety of materials greatly reducing the time spent on property maintenance.

The tines on the SGC06 are manufactured from high-tensile AR400 Steel making it light-weight, yet extremely durable. For additional strength, the frame is made of stout 2" x 3" rectangular tubing. The hinge points feature 3/4" greasable pins. Plus the Land Pride name means there is quality built in.

Land Pride also has six 3rd Function Valve Kits for a variety of Kubota tractor/loader combinations. Add versatility to your tractor by completing the package with a 3rd Function Kit.



	SGC0660
Mount	Universal Quick-Attach Kubota B Mount, or Blank*
Width	62"
Weight - lbs (kg)	247 (112)
Closed Height	30"
Number of Bottom Teeth	7
Number of Top Teeth	6
Teeth Spacing	9-3/8"
Tooth Thickness	5/16"
Working Length of Teeth	9"
Jaw Opening	32"
Tine Material	AR400

Color: 





SGC10



Make quick work of large jobs.

Land Pride's Claw Grapple makes quick work of large jobs. The SGC can be used to rake, dig, and move rocks, trees, brush, and construction debris without picking up dirt. The compact design minimizes weight while preserving lift capacity. This unit comes complete with the durability that Land Pride is known for. Our Claw Grapple is ideal for an all-purpose grapple.



SGC15



The 10 Series Claw Grapples features AR400 teeth construction. This abrasion resistant steel has a tensile strength five times that of A36 steel. For heavy use in varied extreme conditions, the SGC10 & SGC20 allows for a longer life. The AR400 also possesses additional 'memory'; allowing bent teeth to potentially spring back into position.



All pivot points feature 1-1/4" greasable pins.



6" x 6" Frame tube for strength and serrated teeth keep material from rolling out.

Color: 

	SGC1060	SGC1072	SGC1560	SGC1572	SGC1584
Hitch	Universal Quick-Attach, Kubota B Mount, or Blank*		Universal Quick-Attach		
Width	62"	75"	63"	74"	86"
Weight - lbs (kg)	356 (161) w/o hitch	414 (188) w/o hitch	784 (356)	882 (400)	987 (448)
Closed Height	33"		39"		
Number of Bottom Teeth	10	12	10	12	14
Number of Top Teeth	9	11	9	11	13
Spacing of Teeth	6"		6"		
Tooth Thickness	1/2" Outer; 3/8" Inner		1/2"		
Working Length of Teeth	11-1/4"		12-7/8"		
Hydraulic Cylinder	2" x 6" x 1-1/8" Rod		3" x 10" x 1-1/4" Rod		
Jaw Opening	39-1/2"		50"		
Tine Material	High Tensile AR400		Grade 80		

*For Dealer Installed Hitch Plate



Ideal for storm clean-up and land clearing operations.

Let the Land Pride Skeleton Grapple do the digging for you by removing roots, stumps, and other timber or debris. These are available in 66" and 78" widths and with 5-1/2" spacing between the teeth, smaller debris is sifted easily. Dual hydraulic cylinders on the SGS15 can close at various gaps to handle irregular shapes, and serrated teeth make this grapple a work-horse in storm clean up and land clearing operations. Our Skeleton Grapple also features available bolt-on side panels.



SGS15



SSB15

	SGS1566	SGS1578	SSB1578
Hitch	Universal Quick-Attach		Universal Quick-Attach
Width	66"	78"	78"
Weight - lbs (kg)	680 (308)	732 (332)	379 (172)
Closed Height	31"		N/A
Number of Bottom Teeth	12	14	14
Spacing of Teeth	5-1/2"		5-1/2"
Tooth Thickness	3/8"		3/8"
Working Length of Teeth	35"		35"
Hydraulic Cylinder	2" x 8" x 1-1/4" Rod		N/A
Jaw Opening	37"		N/A
Lower Tine Material	Grade 80		Grade 80



Optional bolt-on side panels.



Serrated teeth design allows for better load gripping.



Optional covers protect hydraulic cylinders and fittings.



Color: 

Open ends allow for greater capacity.



Add Versatility to Your Tractor

The Land Pride GBE25 and GB25 Series Grapple Buckets are ideal for use on your farm, ranch, dairy, construction site or nursery. These American-made, large capacity grapple buckets have the capability to quickly and conveniently turn your tractor loader into a versatile tool for handling large bales or loose and shredded materials such as straw, hay, silage, manure, branches, sticks, wood, and trash.

The heavy-duty grapple with high-strength cast tines helps hold the loose and/or shredded materials in the bucket for picking and transporting. The large, 84" jaw opening allows the operator to grasp even the largest loads.



	GB2590 GBE2590	GB2596 GBE2596	GB25108 GBE25108
Hitch Style	GB: Front loader plate mount GBE: Euro hitch plate		
Weight (Optional BOE & Valve included)	1,610 lbs	1,648 lbs	1,781 lbs
Bucket Capacity (Struck)	1.00 cu yd	1.07 cu yd	1.18 cu yd
Overall Width	90"	96"	108"
Grapple Opening (with BOE)	84"	84"	84"
Number of Tines	4	4	5
Tine Construction	Bolt-on ductile iron tine with reinforced gussets		
Tine Thickness	3/4"		
Hydraulic Cylinder	Dual 3" x 14" x 1-1/2" rod		
Maximum Pressure Rating	3500 psi		

Color Options: 



Achieve long lasting results with top quality components.

The auger pulls the snow inward as the auger paddles direct it into the high speed impeller. Snow is thrown out of the adjustable chute so you can direct it right where you want it. Because the Snow Blower is making two points of contact with the snow, it can break up hard compacted snow and cover a wider clearing path.

- Hardened Cutting Edge
- Shear Bolt Driveline
- Heavy Duty Chute
- Choice of Skid Shoes
- Telescoping Hitch



	SB1051	SB1064	SB1574
Horsepower	18-32 HP	18-59 HP	30-59 HP
Telescoping Hitch	Cat. 1, Quick-Hitch Adaptable		Cat. 1, Quick-Hitch Adaptable
Working Width (cm)	51" (130)	64" (163)	74" (188)
Weight - lb (kg)	390 (177)	501 (227)	545 (247)
Main Housing Material	12 Gauge		12 Gauge
Side Plate Material	3/16"		3/16"
Optional Cutting Edge	Bolt-on, Reversible & Replaceable Hardened Steel		Bolt-on, Reversible & Replaceable Hardened Steel
Optional Skid Shoes (Choice of)	Outer: Bolt-on, Adjustable & Replaceable Wear Plate: Bolt-on, Hardened, Replaceable and Reversible Button Style: Adjustable & Replaceable		
Impeller	20" Diameter, 4 Blades		24" Diameter, 4 Blades
Impeller Housing Depth	6"		8"
Auger	1 - 14" Diameter, 3/8" x 2-1/2" Flighting		1 - 16" Diameter, 3/8" x 2-1/2" Flighting
Auger Paddles	2	4	4
Drive Chain	#60 Heavy		#60 Heavy
Chute Opening at Base	8"		10"
Chute Rotation	Sprocket Type; Manual, Electric or Hydraulic		Sprocket Type; Manual, Electric or Hydraulic
Chute Deflector Operation	Manual, Electric or Hydraulic		Manual, Electric or Hydraulic
Driveshaft Shear Bolt	Grade 5 - 1/4 x 20		Grade 5 - 1/4 x 20
PTO Driveline	Cat. 2, Shear Bolt		Cat. 3 Heavy, Shear Bolt

Color Options:



See page 109 for photos of Snow Blower options.

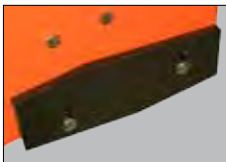
Ideal for clearing parking lots, long driveways and roadways.



Designed for tractors ranging from 43 to 105 HP with Cat. 1 or Cat. 2 hitches, the SB2584 Snow Blowers are designed to remove snow from parking lots, walking paths, homeowner lanes, and driveways. The 84" width, 16" auger, and 24" impeller make short work of the largest snow removal tasks.

	SB2584
Horsepower	43-105 HP
Telescoping Hitch	Cat. 1 & 2, Quick-Hitch Adaptable
Working Width (cm)	84" (213)
Weight - lb (kg)	875 (397)
Main Housing Material	12 Gauge
Side Plate Material	3/16"
Optional Cutting Edge	Bolt-on, Reversible & Replaceable Hardened Steel
Optional Skid Shoes (Choice of)	Outer: Bolt-on, Adjustable & Replaceable Wear Plate: Bolt-on, Hardened, Replaceable & Reversible Button Style: Adjustable & Replaceable
Impeller	24" Diameter, 4 Blades
Impeller Housing Depth	10"
Auger	1 - 16" Diameter, 3/8" x 2-1/2" Flighting
Auger Paddles	4
Drive Chain	#60 Heavy
Chute Opening at Base	12"
Chute Rotation	Sprocket Type; Manual, Electric or Hydraulic
Chute Deflector Operation	Manual, Electric or Hydraulic
Driveshaft Shear Bolt	Grade 5 - 1/4 x 20
PTO Driveline	Cat. 3 Heavy, Shear Bolt

Optional front cutting edge and inner or outer depth shoes can be purchased with all models to increase the life of the units and to prevent gouging on uneven surfaces.



Side Wear Plate



Button-style



Outer Skid Shoe

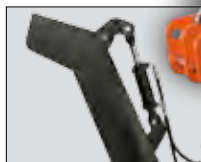
Chute Rotation available in Manual, Hydraulic, or Electric. The chute rotates so you can direct the snow right where you want it.



Manual Chute Rotator



Optional Electric Rotator



Tilt can be easily adjusted manually, or with electric or hydraulic option.

Color Options:



Optional Hydraulic Rotator

Make quick work of winter's biggest jobs.

Land Pride's SBD35 Snow Blowers feature an adjustable, telescopic Cat. 2 and Cat. 3 to allow for easy hook up with or without a Quick Hitch. 1/4" side plates with reinforced gussets wrap on the main housing to create an exceptionally strong blower.

Dual 16" diameter augers feed the SBD35's massive 34" impeller to help the SBD35 dive into the biggest piles without bogging down on the volume. The Augers are chain driven with a shear bolt on the sprocket drive shaft to protect the gearbox and driveline from damage.



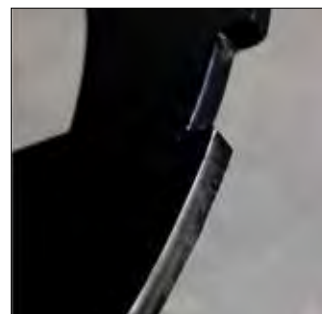
Both models have a telescoping Cat. 2 or Cat. 3 reinforced hitch for use with or without a Quick Hitch.



Hydraulically controlled chute is gear driven for smooth efficient operation.



The shear-bolt on sprocket drive shaft protects gearbox and driveline from damage.



Aggressive augers manufactured from 3/8" plate steel chew through snow and ice.

	SBD3596	SBD35108
Horsepower	85-125 HP	120-180 HP
Hitch	Cat. 2 & 3, Adjustable	
Working Width (cm)	96" (244)	108" (274)
Weight - lb (kg)	1614 (732)	1964 (891)
Main Housing Material	10 Ga.	3/16"
Side Plate Material	1/4"	
Impeller	34" Diameter	
Impeller Housing Depth	10 1/8"	12-3/8"
Impeller Blades	4	
Auger	16" Diameter	
Auger Flighting	3/8" Plate Steel	
Auger Paddles	4	
Chute Opening at Base	12"	15-5/8"
Chute Rotation	Sprocket Type; Hydraulic	
Chute Deflector Operation	Manual or Hydraulic	
Cutting Edge	1/2" x 6", Reversible & Replaceable; Heat Treated	
Skid Shoes	Outer-Side-Mount, Inner-Rear Mount Adjustable & Replaceable	

Color Options: 

Move snow with hydraulic-driven SBL25.

The SBL25 is a front-mount Snow Blower designed to fit skid steers and tractors with Quick-Attach plates. It is a fully hydraulic unit – auger, impeller, chute, and deflector – and features a 24" impeller and 16" auger. The auger features 4 paddles to direct snow into the 4-blade impeller to direct the snow into the chute. Skid shoes are adjustable and replaceable.



	SBL2566	SBL2574
Horsepower	12-33 gpm	
Hitch	Universal Quick-Attach	
Working Width (cm)	66"	74"
Weight - lb (kg)	816 (370)	938 (425)
Drive and Control System	Hydraulic motors with electric over hydraulic	
Hydraulic Requirements	Low volume motor option: 12-19 gpm Medium volume motor option: 20-26 gpm High volume motor option: 27-33 gpm 30-60 Hydraulic HP	
Hydraulic Pressure Rating	2500-3500 psi	
Main Housing Material	10 Gauge	
Side Plate Material	3/16"	
Chute Opening at Base	10"	10"
Impeller Housing Depth	8"	8"
Impeller Diameter	24"	
Number of Impeller Blades	4	
Auger Diameter	16"	
Number of Auger Paddles	4	
Chute Opening at Base	10"	10"
Chute Rotation	220° Hydraulically driven sprocket	
Spout Deflector	Hydraulic operation	
Spout Deflector Cylinder	Double acting 2" x 4" x 1-1/2" rod	
Skid Shoes	Bolt-on, adjustable & replaceable	
Cutting Edge	Bolt-on, reversible, and replaceable full length cutting edge	



Color Options:  

Add hydraulic power with ease.

The HRS is a self contained power pack to run log splitters, chippers, front-mounted snowblowers and more. Easily hook to the 3-point hitch on your tractor, hook the driveline to the tractor's PTO shaft, and you have a convenient supply of hydraulic power.



	HRS3025
Horsepower	52 Min.
Hitch	Cat. 1 & 2
Pump Capacity	Approx. 25 GPM @ 540 RPM
PTO Input Speed	540 RPM
Hydraulic Fluid Type	Mobil Fluid 424
Overload Protection	Hydraulic Relief Valve
Reservoir Capacity & Filter Type	35 Gallons, Conventional 10 Micron Filter
Overload Protection	3000 PSI Hydraulic Relief Valve
Driveline	ASAE Category 3
Pressure & Return Hose Lengths	24 Feet Each
Case Drain Port	3/4" - 16 UNF
Hydraulic Cooler	Optional

Color: 



Optional Valve Selections

- No Valve - Use PTO to turn hydraulics on and off
- Manual Valve - Use remote valve to turn hydraulics on and off
- Solenoid Valve - Use electronic control to turn hydraulics on and off
- Add hydraulic power to your tractor to power front mounted hydraulic driven implements
- Can also be used to power independent implements such as a log splitter





NEW!

Efficient Snow Removal with Loader-Mount Blades.

The STB10 and STB15 Snow Trip Blades are designed to fit tractor loaders. The STB10 is available in 5' and 6' widths for tractors with loaders in the 25-40 HP range. The 10 Series Model has a 21" curved moldboard. The STB15 is designed for tractors 30 to 70 HP and is available in 5', 6', 7', and 8' widths. The 15 Series features a 27" curved moldboard. Both models feature dual trip springs and abrasion resistant AR400 skid shoes. Hydraulic angling options are available on both units as well and both have safety orange edge markers as standard equipment.

	STB10	STB15
Carrier Horsepower Range	25-40 HP	30-70 HP
Hitch/Mount	Quick-Attach	Quick-Attach
Widths	60", 72"	60", 72", 84", 96"
Moldboard Height	21" Curved blade	27" High curved blade
Moldboard Material	12 gauge	10 gauge
Moldboard Spring Trip	2 Spring protection	
Moldboard Trip	Can be locked for light grading	
Blade Widths	5-6 ft.	5-6-7-8 ft.
Skid Shoes Button Style Standard	AR400 Material	
Angling	Up to 30 degrees	
Optional Hydraulic Cylinder(s)	Single, Dual or dual with cushion valve	Dual or dual with cushion valve
Manual Angle Positions	2-left 1-center 2-right	
Adjustable Spring Tension	Standard	
Carrier Lift Capacity	Less than 3,500 lbs	Less than 5,000 lbs
Carrier Max Operating Weight	Less than 4,500 lbs	Less than 8,000 lbs
Max. Hydraulic Pressure Rating	3,000 psi	
Replaceable Wear Edge	1/2" x 6" Mild Steel or 1/2" x 6" Poly	
Marker Kit	Standard	



*NOT to be used on Skid Steers

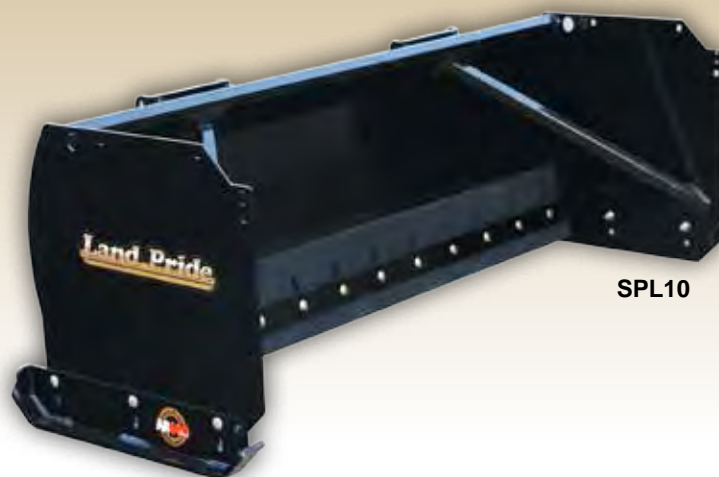
Color:



Handle large amounts of snow in little time.

The SPL Loader-Mount Snow Pushers are available in an 05 Series that fits BX 60 or 70 Series Tractors only. The SPL05 Snow Pusher is available in a 48" and 60" model with a BX hitch. The unit is 18" high and 18" deep, features a 12 gauge moldboard, 3/16" side panels, and optional steel or poly blades.

The SPL10 Snow Pusher is available in 60", 72", and 84" with a 24" x 24" box, 10 gauge moldboard, and 1/4" sides. The SPL10 skid shoes are manufactured from abrasion resistant AR400 steel and are replaceable. Optional pull back and steel or rubber blades are also available.




SPL10



SPL05

	SPL05	SPL10
Horsepower	Up to 28 HP	25-45
Hitch	BX Hitch	Universal Quick-Attach
Working Width	48", 60"	60", 72", 84"
Height	18"	24"
Depth	18"	24"
Moldboard	12 gauge	10 gauge
Side Panels	3/16"	1/4"
Optional Blades-replaceable	Steel: 3/8" x 4" Poly: 1/2" x 6"	Steel: 1/2" x 6" Rubber: 1" x 8"
Pullback Blade	Optional	Optional
Skid Shoes	Replaceable	AR400, Replaceable

SPL05
Color: 

SPL10
Color: 

Quickly clears snow from large areas.

Handle anything Old Man Winter throws at you with Land Pride's SSP25 Series Snow Pushers. Skid shoes are designed with AR400 steel for greater wear life and both models have steel wear edges available. Get more work done quickly with Land Pride Snow Pushers.



NEW!

	SSP2510	SSP2512
Horsepower	50-80 HP	
Hitch	Universal Quick-Attach	
Working Width	10'	12'
Carrier Lift Capacity	Less than 5,000 lbs	
Carrier Max Operating Weight	Less than 8,000 lbs	
Moldboard Height	36"	
Moldboard Thickness	3/16"	
Side Panels w/ Supports	5/16" Plate	
Blade Depth	35"	
Replaceable Bottom Wear Edge	1-1/2" x 8" Rubber w/Slotted Holes	
Mounting Steps	Serrated, on hitch	
Skid Shoes	AR400 1/2" x 4" Reversible, Adjustable	
Option	Pull Back Kit	

Color:



The SSP25 boasts up to 5,000 lbs. of lift capacity.





A Division of Great Plains Mfg., Inc.
1525 E. North St. • P.O. Box 5060
Salina, Kansas 67401
Visit our dealer locator at landpride.com

Over 300 Products To Fit Your Lifestyle

All-Flex Mowers • All-Purpose Seeders • Bale Spears • Box Scrapers • Compact Drills
Core Aerators • Crimpers • Disc Harrows • Ditchers • Drag Harrows • Drag Scrapers • Fertilizer Spreaders
Field Cultivators • Flail Mowers • Food Plot Seeders • Grading Scrapers • Grapples • Grooming Mowers
Hydraulic Reservoir Kits • Landscape Rakes • Moldboard Plows • No-Till Seeders • Overseeders • Pallet Forks
Pasture Aerators • Post Hole Diggers • Powered Rakes • Primary Seeders • Quick-Hitches • Rear Blades
Ripper Shanks • Rotary Cutters • Rotary Tillers • Scarifiers • Seed Bed Rollers • Snow Blowers • Snow Pushers
Snow Trip Blades • Soil Pulverizers • Spike Tooth Harrows • Wood Chippers • Zero Turn Mowers