

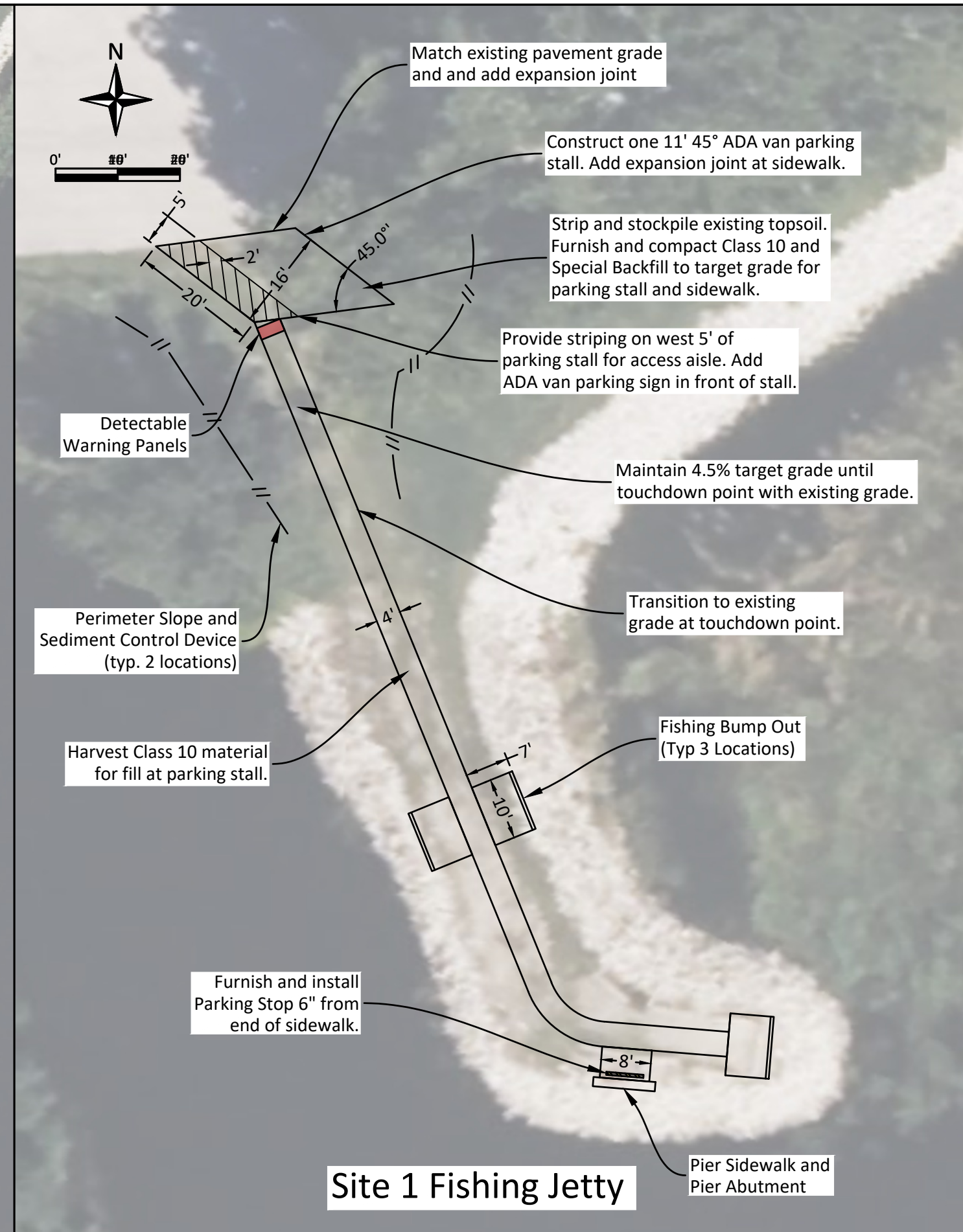
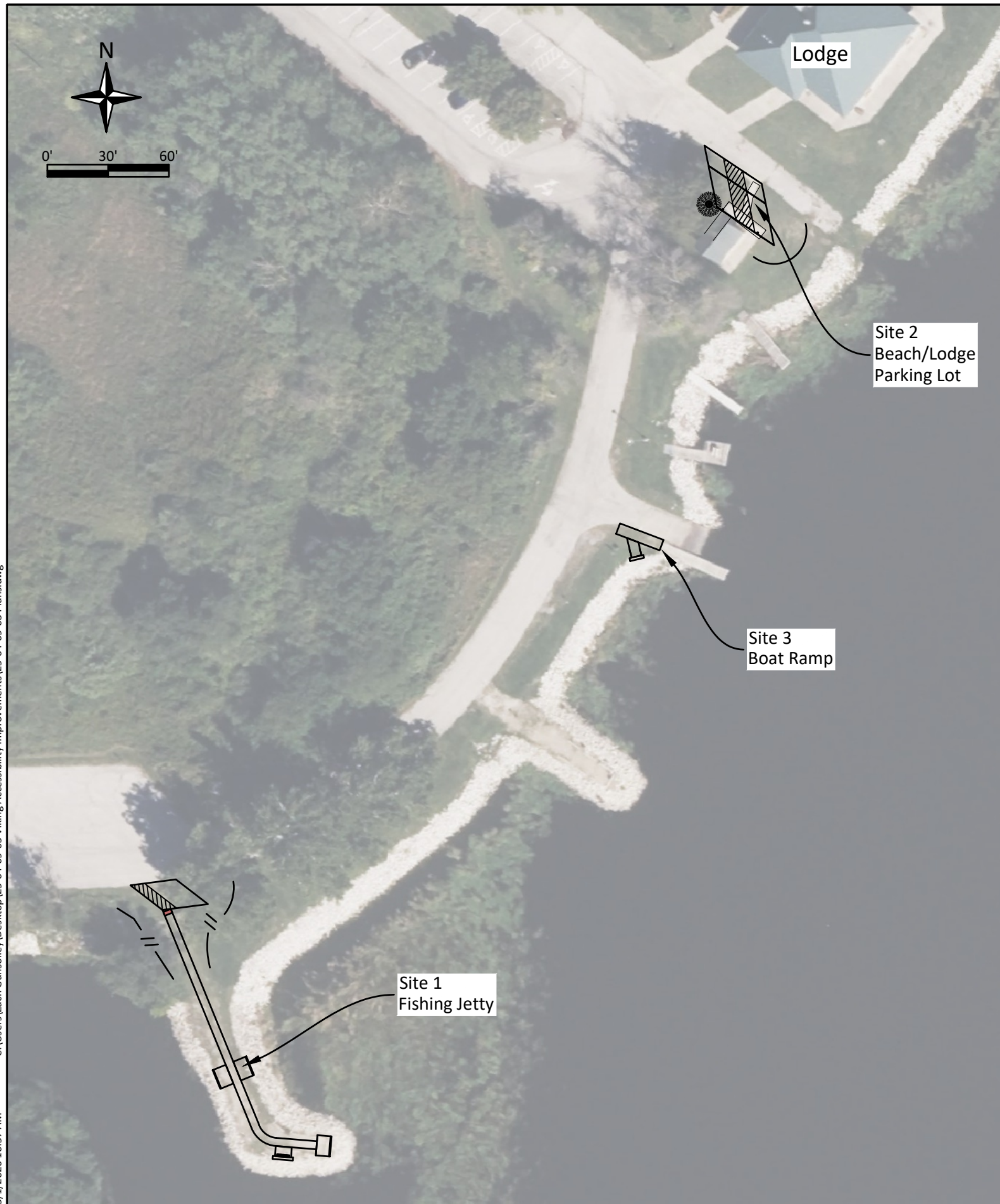
C:\Users\Zach_Gunsolley\Desktop\25-04-69-03 Viking Accessibility Improvements\25-04-69-03 Plans.dwg

Plot Date: 5/1/2026 10:57 AM



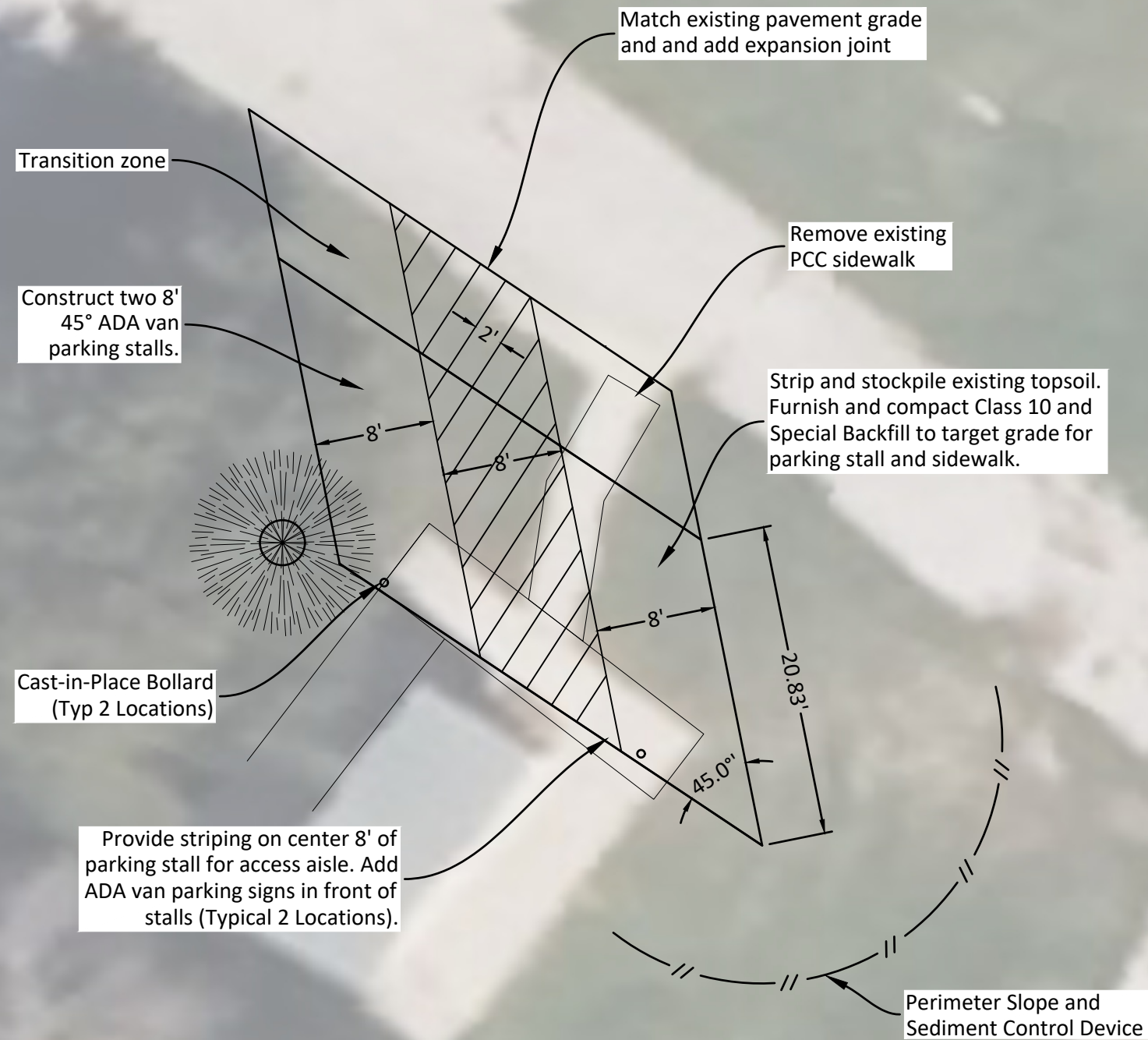
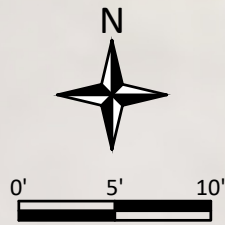
Drawn by: ZG	
Revision	Date

Plot Date: 5/1/2026 10:57 AM C:\Users\Zach Gunsolley\Desktop\25-04-69-03 Viking Accessibility Improvements\25-04-69-03 Plans.dwg

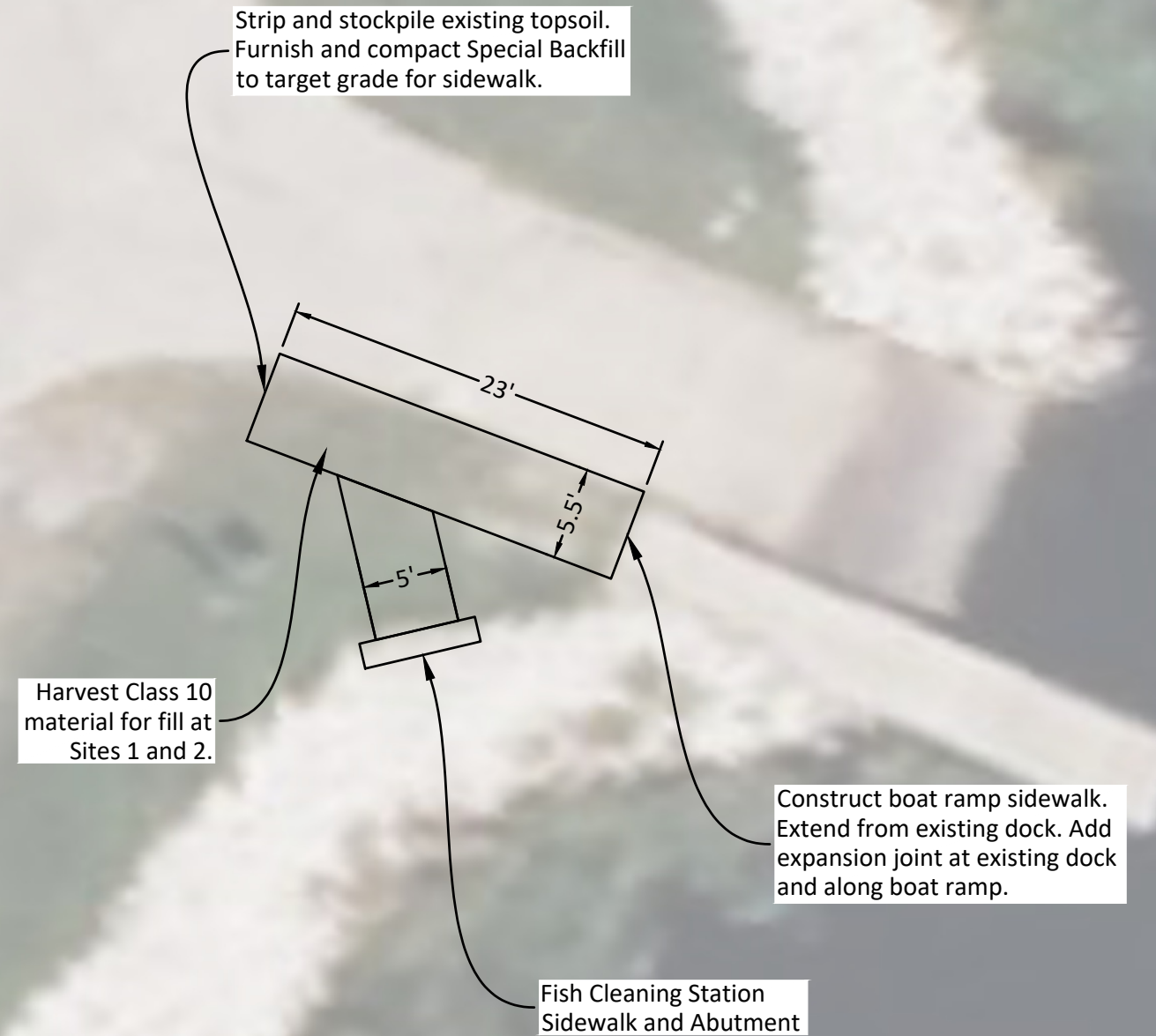


C:\Users\Zach.Gunsolley\Desktop\25-04-69-03 Viking Accessibility Improvements\25-04-69-03 Plans.dwg
Plot Date: 5/1/2026 10:57 AM

Lodge



Site 2 Beach/Lodge Parking Lot



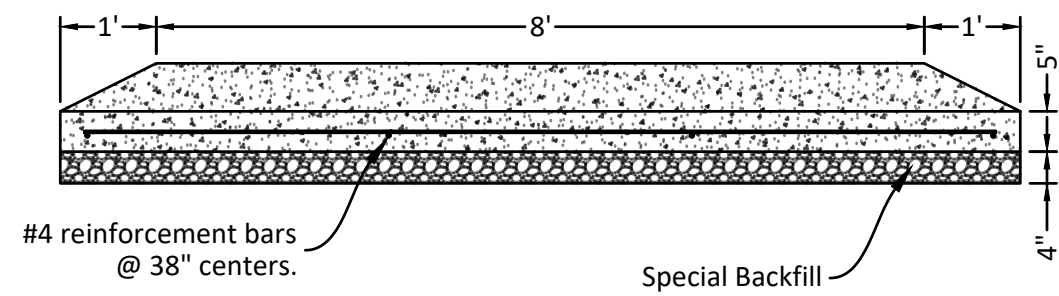
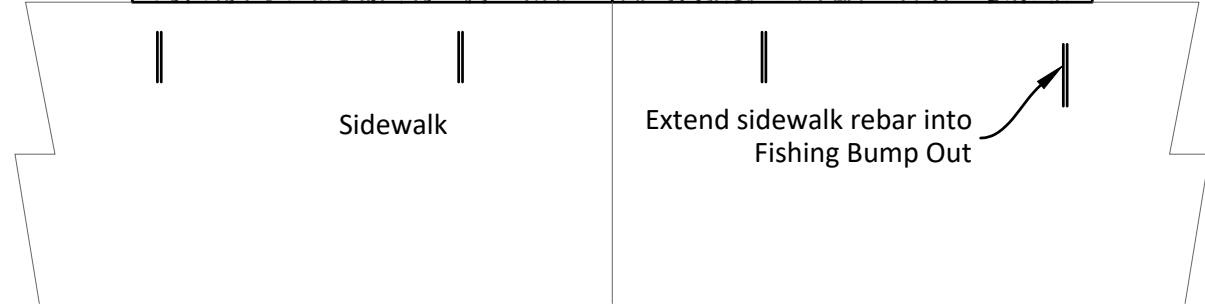
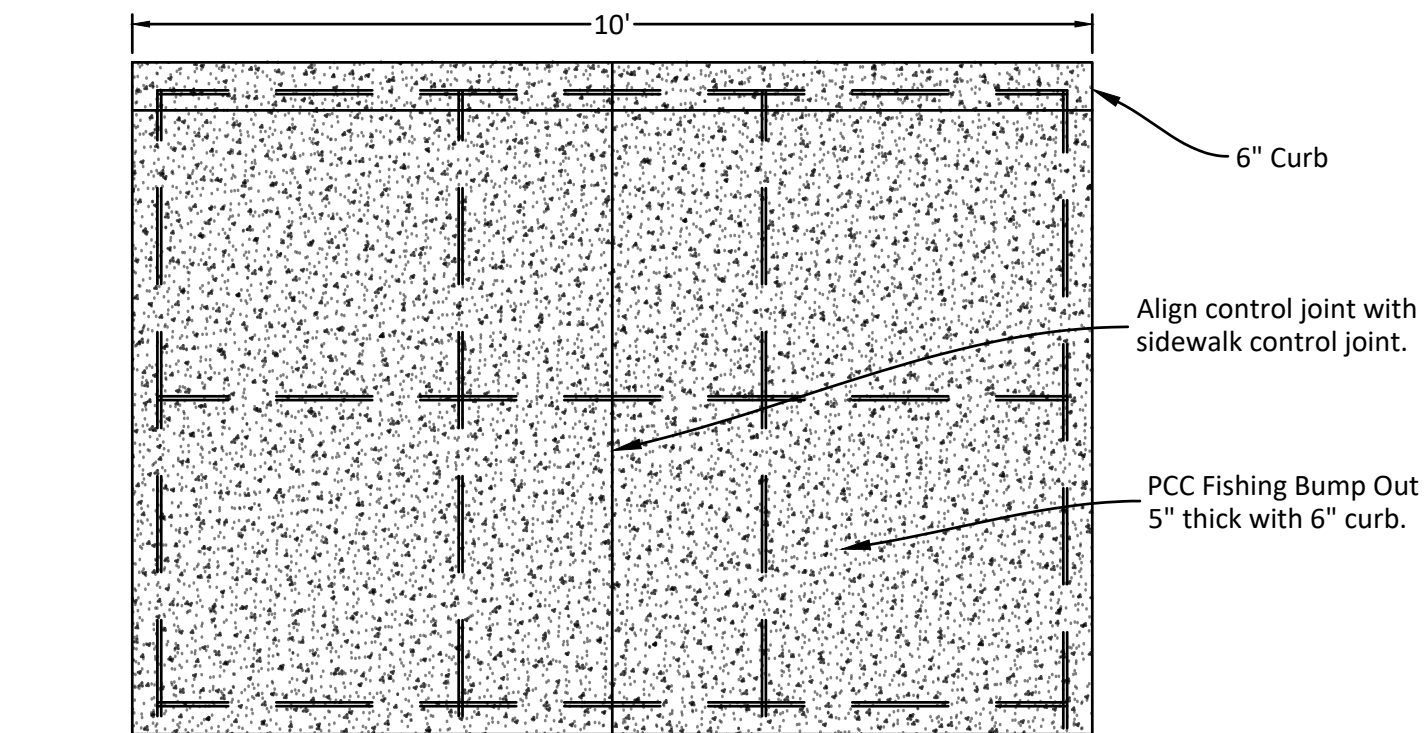
Site 3 Boat Ramp



Drawn by: ZG	
Revision	Date

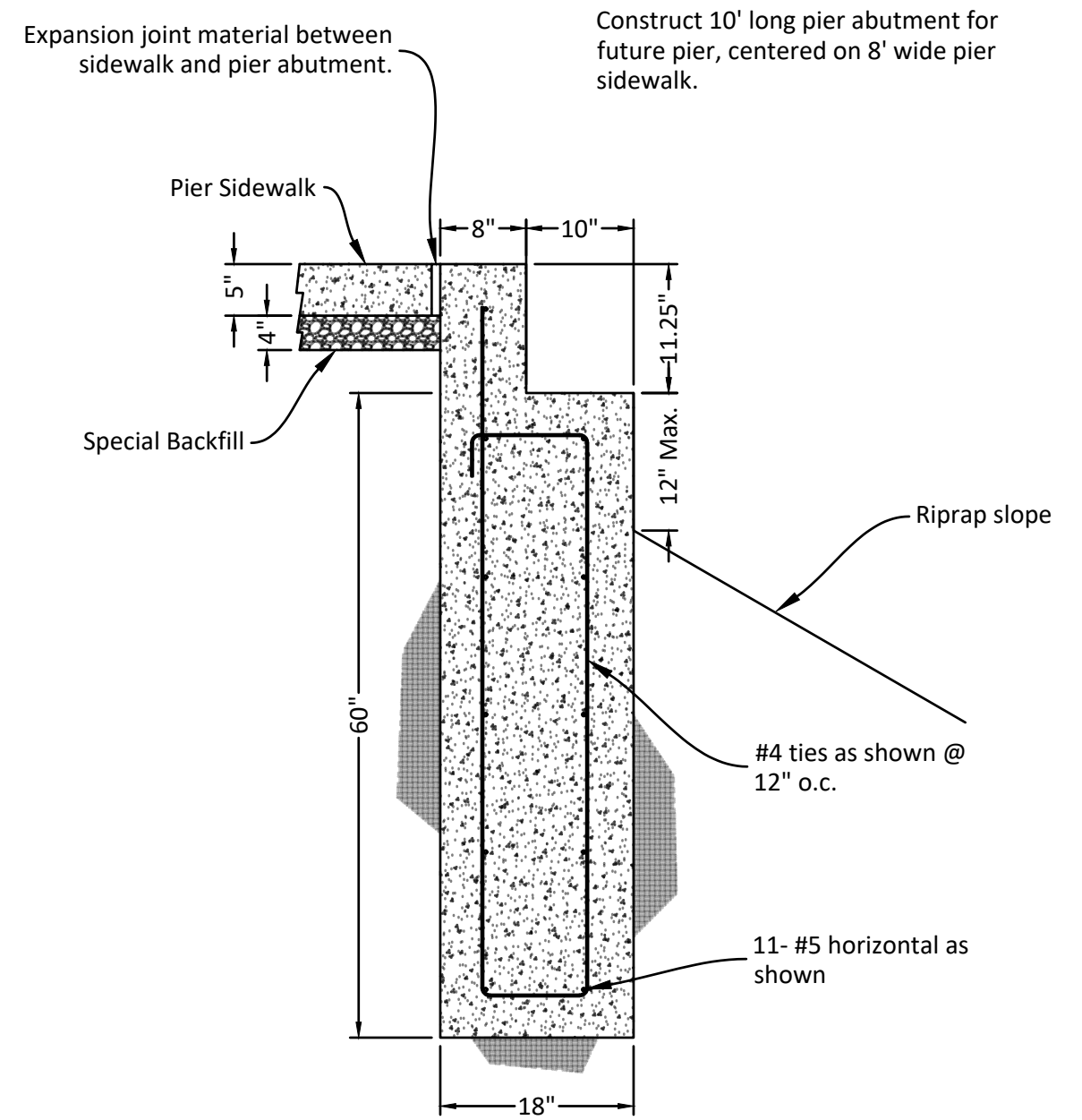
C:\Users\Zach Gunsolley\Desktop\25-04-69-03 Viking Accessibility Improvements\25-04-69-03 Plans.dwg

Plot Date: 5/1/2026 10:57 AM



Fishing Bump Out

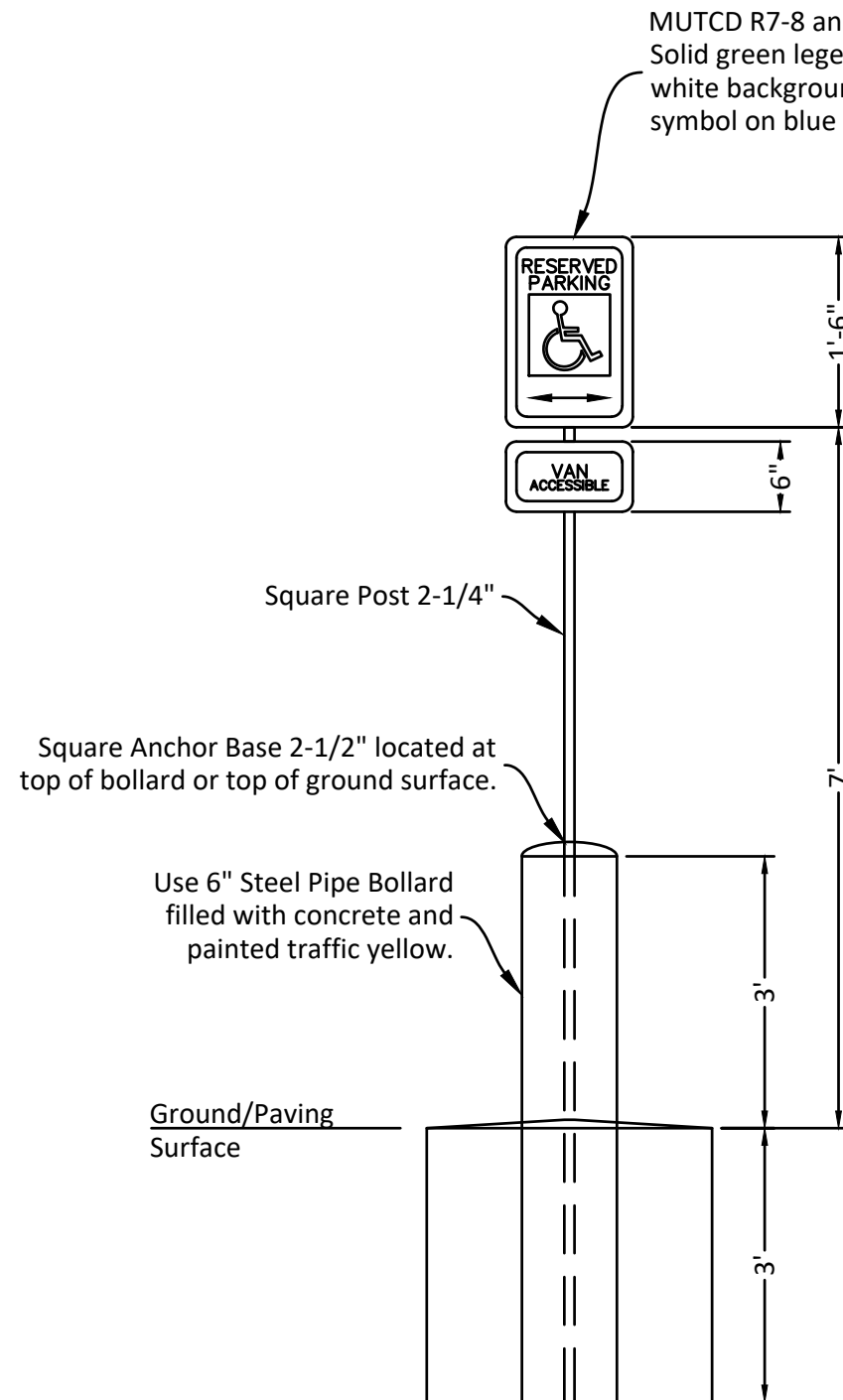
Not to Scale



Pier Abutment Detail

Not to Scale

Plot Date: 5/1/2026 10:57 AM C:\Users\Zach_Gunsolley\Desktop\25-04-69-03 Viking Accessibility Improvements\25-04-69-03 Plans.dwg



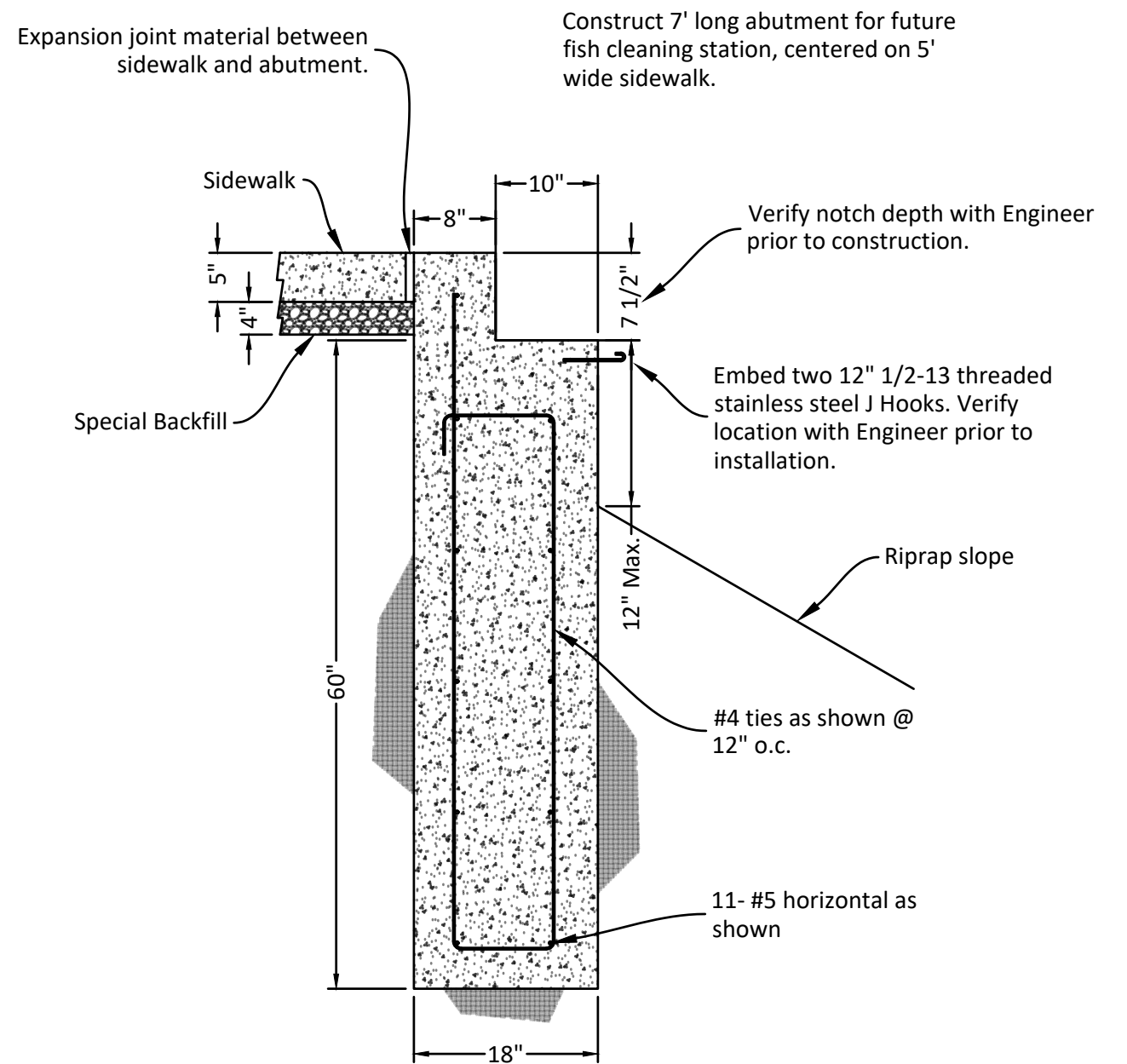
MUTCD R7-8 and R7-8aP (van accessible)
Solid green legend and border, reflective
white background, white accessibility
symbol on blue background.

Notes:

1. 12"X18" accessibility sign shall be mounted 7' from finish grade to bottom edge of sign face. Mounting height may be reduced to 5' if placed in a landscape area in which pedestrians are not expected to use.
2. Signage to be located at end of parking stall, 2' back from edge of pavement, centered on stall if possible.
3. All signage shall be high-intensity prismatic .080 aluminum reflective sign meeting the requirements of the MUTCD and ADAAG.
4. Installation of square post and anchor base in accordance with IDOT SUDAS Section 8040.

ADA Accessible Parking Signs Detail

Not To Scale



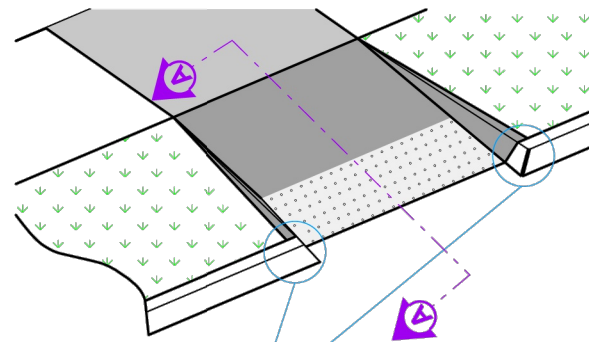
Expansion joint material between
sidewalk and abutment.

Construct 7' long abutment for future
fish cleaning station, centered on 5'
wide sidewalk.

Fish Cleaning Station Abutment Detail

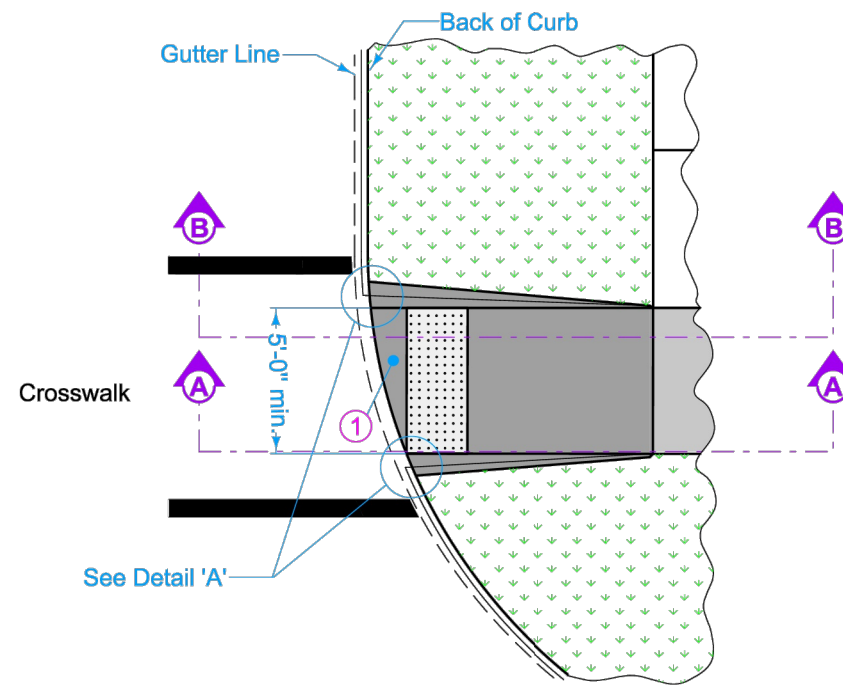
Not to Scale

Plot Date: 5/1/2026 10:57 AM C:\Users\Zach Gunsoley\Desktop\25-04-69-03 Viking Accessibility Improvements\25-04-69-03 Plans.dwg



See Detail 'A'

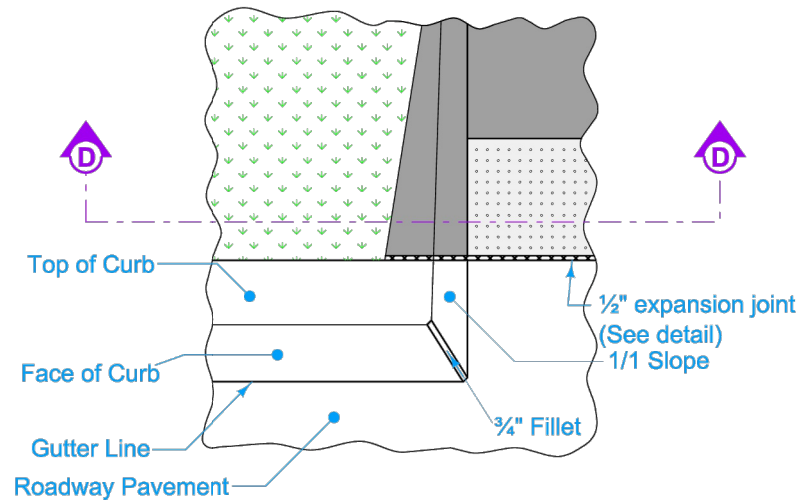
CURB RAMP PERPENDICULAR TO CURB



See Detail 'A'

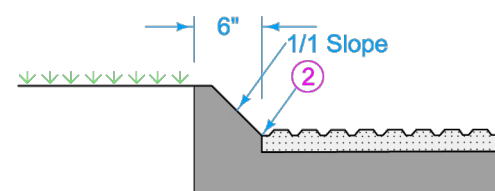
CURB RAMP NOT PERPENDICULAR TO CURB

- ① Unless curb ramp is aligned perpendicular to the street radius, provide an area of special shaping at the bottom of the ramp. This area allows the grade break at the bottom of the ramp to be perpendicular to the ramp and provides a smooth transition to gutterline for wheelchair access.
- ② Use vertical curb adjacent to ramp unless flares are specified in the project plans. Install Detectable Warnings so that no gap is left between warning panel and base of curb.

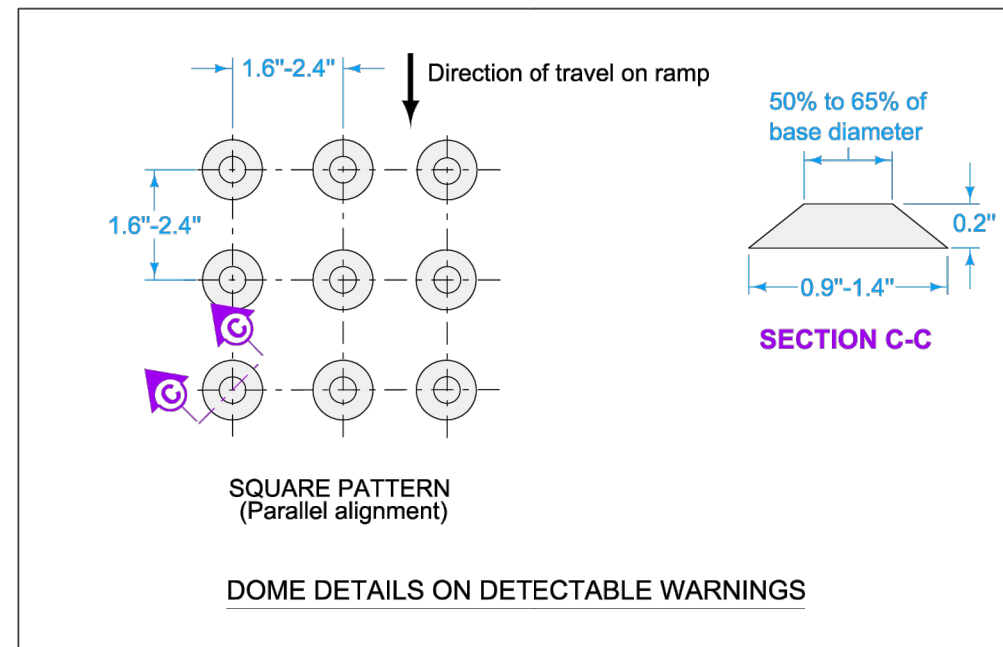


DETAIL 'A'

LEGEND	
	Ramp
	Landing
	Detectable Warnings
	Vegetation



SECTION D-D



Possible Contract Items:
 Detectable Warnings
 Sidewalk, P.C. Concrete, 6 in.
 Sidewalk, P.C. Concrete, 4 in.
 Removal of Sidewalk

Possible Tabulation:
 113-1

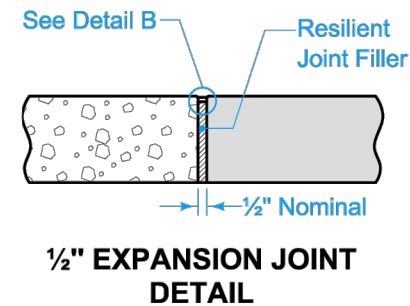
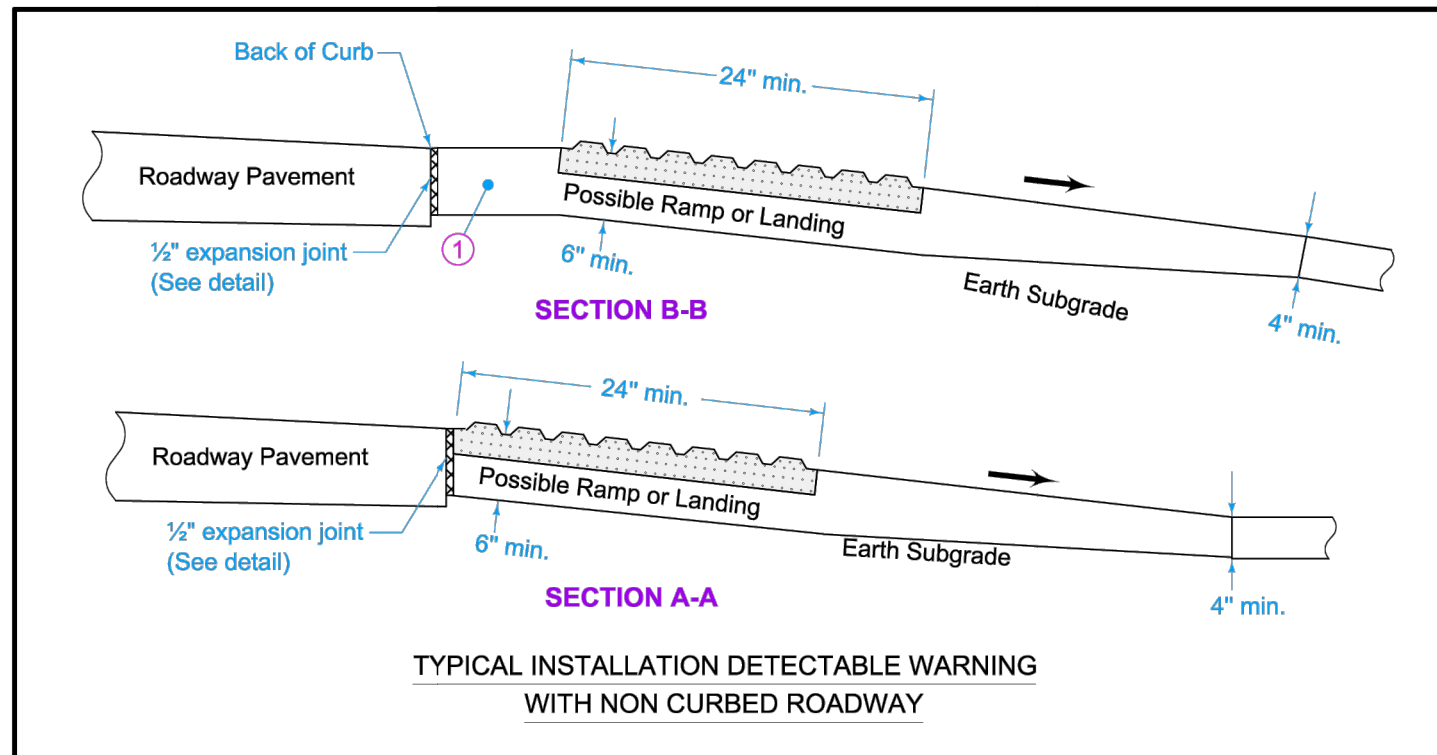
IOWA DOT	REVISION	
	7	04-15-25
STANDARD ROAD PLAN		MI-220
		SHEET 1 of 3
REVISIONS: Changed 'E' joint to 1/2" expansion joint, added expansion joint detail Changed curb end to 1/1 slope.		
 APPROVED BY DESIGN METHODS ENGINEER		
DETECTABLE WARNINGS AND PEDESTRIAN RAMP		



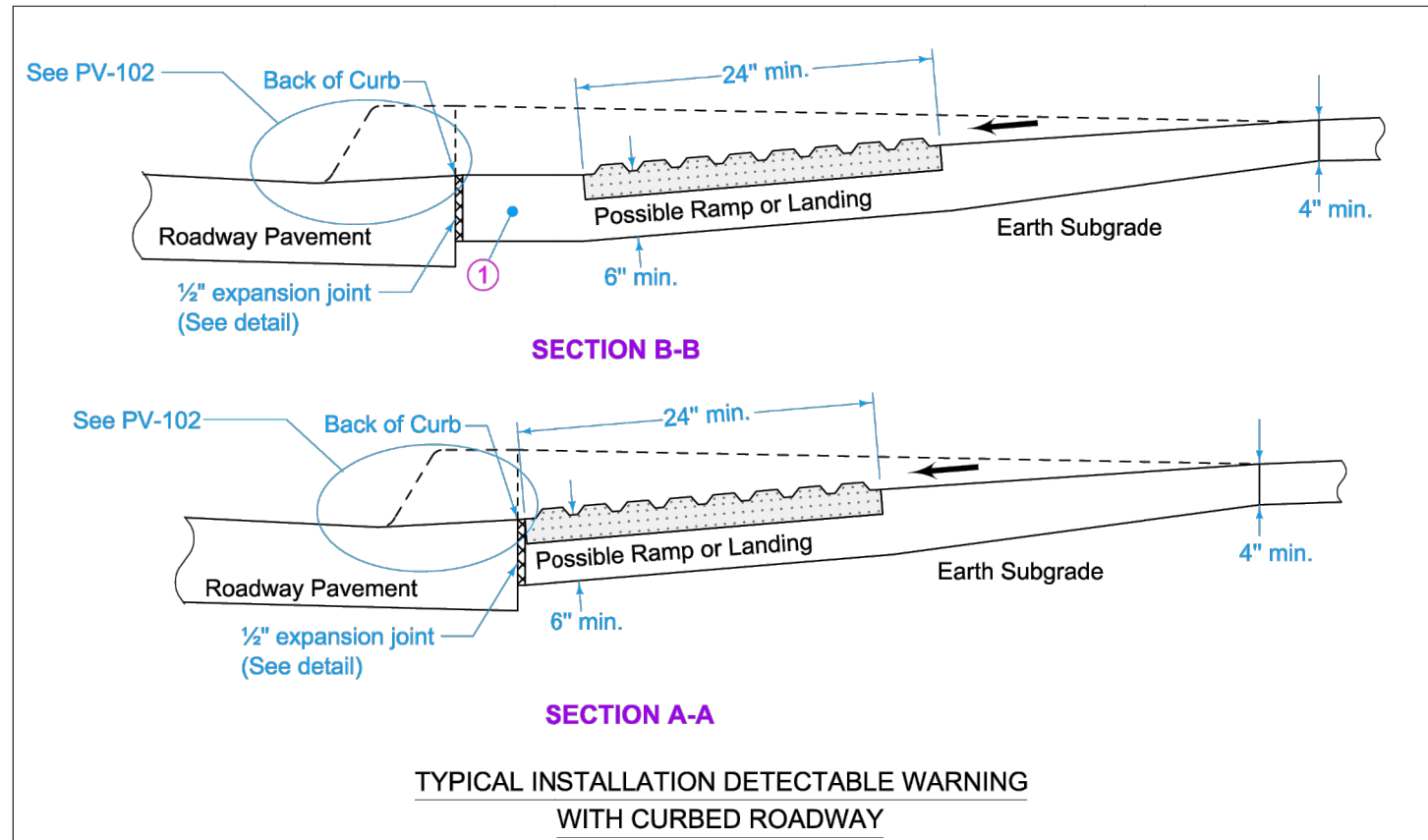
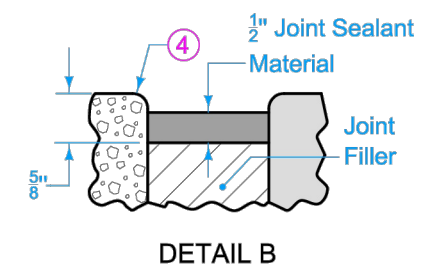
Drawn by: ZG
Revision
Date

C:\Users\Zach Gunsolley\Desktop\25-04-69-03 Viking Accessibility Improvements\25-04-69-03 Plans.dwg

Plot Date: 5/1/2026 10:57 AM



- ① Unless curb ramp is aligned perpendicular to the street radius, provide an area of special shaping at the bottom of the ramp. This area allows the grade break at the bottom of the ramp to be perpendicular to the ramp and provides a smooth transition to gutterline for wheelchair access.
- ④ Edge with 1/4 inch tool for length of joint indicated if formed; edging not required when cut with diamond blade saw.



LEGEND

	Ramp
	Landing
	Detectable Warnings
	Vegetation

IOWA DOT	REVISION	
	7	04-15-25
STANDARD ROAD PLAN		MI-220
		SHEET 2 of 3
REVISIONS: Changed 'E' joint to 1/2" expansion joint, added expansion joint detail Changed curb end to 1/1 slope.		
 APPROVED BY DESIGN METHODS ENGINEER		
DETECTABLE WARNINGS AND PEDESTRIAN RAMP		



Drawn by: ZG
Revision
Date

Bid Date: 05/28/2026

Project Number: 25-04-69-03

Accessibility Improvements
Viking Lake State Park, Montgomery County

Project Details - Detectable Warnings

C:\Users\Zach Gunsoley\Desktop\25-04-69-03 Viking Accessibility Improvements\25-04-69-03 Plans.dwg Plot Date: 5/1/2026 10:57 AM

Estimated Quantities

Item	Description	Quantity	Unit
Site 1			
1	2102-0425070 Special Backfill	100	Tons
2	2102-2710070 Excavation, Cl 10, Roadway and Borrow	23	CY
3	2105-8425015 Topsoil, Strip, Salvage and Spread	18	CY
4	2403-0100000 Pier Abutment	1	LS
5	2511-7526005 Sidewalk, Reinforced PCC, 5 In.	70	SY
6	2511-7527000 PCC Fishing Bump Out	3	EA
7	2511-7528101 Detectable Warnings	8	SF
8	2515-2475006 Parking Stall, Reinforced PCC, 6 In.	36	SY
9	2515-9999999 Parking Stop	1	EA
10	2526-8285000 Construction Survey	0.34	LS
11	2527-9263209 ADA Striping and Van Parking Sign	1	LS
12	2533-4980005 Mobilization	0.34	LS
13	2601-2634105 Mulching, Bonded Fiber Matrix	0.10	Acre
14	2601-2636044 Seeding and Fertilizing (Urban)	0.10	Acre
15	2602-0000309 Perimeter & Slope Sediment Control	90	LF
Site 2			
16	2102-0425070 Special Backfill	26	Tons
17	2102-2710070 Excavation, Cl 10, Roadway and Borrow	14	CY
18	2105-8425015 Topsoil, Strip, Salvage and Spread	15	CY
19	2403-0100000 Fish Cleaning Station Abutment	1	LS
20	2511-6745900 Removal of Sidewalk	22	SY
21	2515-2475006 Parking Stall, Reinforced PCC, 6 In.	83	SY
22	2519-3760000 Safety Bollard	2	EA
23	2526-8285000 Construction Survey	0.33	LS
24	2527-9263209 ADA Striping and Van Parking Sign	1	LS
25	2533-4980005 Mobilization	0.33	LS
26	2601-2634105 Mulching, Bonded Fiber Matrix	0.05	Acre
27	2601-2636044 Seeding and Fertilizing (Urban)	0.05	Acre
28	2602-0000309 Perimeter & Slope Sediment Control Dev	50	LF
Site 3			
29	2102-0425070 Special Backfill	4	Tons
30	2102-2710070 Excavation, Cl 10, Roadway and Borrow	2	CY
31	2105-8425015 Topsoil, Strip, Salvage and Spread	3	CY
32	2511-7526005 Sidewalk, Reinforced PCC, 5 In.	18	SY
33	2526-8285000 Construction Survey	0.33	LS
34	2533-4980005 Mobilization	0.33	LS
35	2601-2634105 Mulching, Bonded Fiber Matrix	0.01	Acre
36	2601-2636044 Seeding and Fertilizing (Urban)	0.01	Acre

Estimate Reference Information

1,16,29.	See referenced IDOT specification. In fill areas, place and compact after Class 10 placement. Estimated quantities include 4" under sidewalks and 6" under parking stalls. Work is allowed on all three sites to assist in efficient utilization and placement of material.
2,17,30.	See referenced IDOT specification. Place and compact in fill areas below special backfill and topsoil. Work is allowed on all three sites to assist in efficient utilization and placement of material.
3,18,31.	See referenced IDOT specification. Place in areas after Class 10 placement. Work is allowed on all three sites to assist in efficient utilization and placement of material.
4,19.	See referenced IDOT specification and Sheet A.03, B.01 and B.02. Class C mix, Class 2 durability coarse aggregate.
5,32.	See referenced IDOT specification and Sheet A.03 and A.04. Class C mix, Class 2 durability coarse aggregate. Target control joint spacing to the width of sidewalk. Included in this item are three longitudinal #4 reinforcement bars evenly spaced, 6" lap.
6.	See referenced IDOT specification and Sheet A.03 and B.01. Class C mix, Class 2 durability coarse aggregate.
7.	See referenced IDOT specification, Sheet A.03, B.03, and B.04.
8,21.	See referenced IDOT specification and Sheet A.03 and A.04. Class C mix, Class 2 durability coarse aggregate. Included in this item are #4 reinforcement bars placed on 36" centers, 6" lap.
9.	See referenced IDOT specification and Sheet A.03. ULINE H-4608B/Y 6' black/yellow striped or approved equivalent. Include all labor, equipment, and materials necessary to install per manufacturer's recommendations.
10,23,33.	See referenced IDOT specification. This item includes all necessary survey and staking to complete work in accordance with the Contract Documents and 2010 ADA Standards. Non-compliant work shall be removed and replaced at the sole expense of the contractor. Noteworthy ADA requirements: A. 2% maximum cross slope on sidewalks. B. 5% maximum running slope on sidewalks. C. 2% maximum slope in any direction on parking stalls, access aisles, and fishing bump outs.
11,24.	See referenced IDOT specification and Sheet A.03, A.04, B.02.
12-14. 25-27. 34-36.	See referenced IDOT specification.
15,28	See referenced IDOT specification and Sheet A.03 and A.04.
20.	See referenced IDOT specification and Sheet A.04.
22.	See referenced IDOT specification. ULINE H-9089 48" yellow with black trim or approved equivalent, filled with concrete. Include all labor, equipment, and materials necessary to install per manufacturer's recommendations.

General Information

1.	Verify actual locations and elevations with DNR Engineer.
2.	All work shall conform to and be performed in accordance with all applicable codes and ordinances.
3.	The contractor shall visit the site and inspect the project area and thoroughly familiarize themselves with the actual job conditions prior to bidding and the start of work. Failure to visit the project site shall not relieve the contractor from performing the work in accordance to the plans, specification, special provisions and contract.
4.	The contractor shall verify, at the site, all dimensions and conditions shown on the plans and shall notify the DNR Engineer of any discrepancies, omissions, and/or conflicts prior to proceeding with the work.
5.	It shall be the contractor's responsibility to provide waste areas or disposal sites for excess material (excavated material or broken concrete) which is not desirable to be incorporated into the work involved on this project. No payment for overhaul will be allowed for material hauled to these sites. No material shall be placed within the right-of-way, unless specifically stated in the plans or approved by the DNR Engineer.
6.	The contractor shall not disturb desirable grass areas and desirable trees outside the construction limits. The contractor will not be permitted to park or service vehicles and equipment or use these areas for storage of materials. Storage, parking and service areas will be subject to the approval of the DNR Engineer.
7.	Where utilities and fixtures are shown as Existing on the plans or encountered within the construction area, it shall be the responsibility of the contractor to notify the DNR Engineer of those utilities prior to the beginning of any construction. The contractor shall be afforded access to these facilities for necessary modification of services. Underground facilities, structures and utilities have been plotted from available surveys and records and therefore their locations must be considered approximate only. It is possible there may be others, the existence of which is presently not known or shown. It is the contractor's responsibility to determine their existence and exact location and to avoid damage thereto. No claims for additional compensation will be allowed to the contractor for any interference or delay caused by such work.
8.	The contractor shall shape graded area to maintain surface drainage. All elevations are to finish grade.
9.	The contractor is expected to have materials, equipment, and labor available on a daily basis to install and maintain erosion control features on the project. This may involve seeding, silt fence, rock ditch checks, silt basins or silt dikes.
10.	The Iowa DOT Standard Specifications for Highway and Bridge Construction, Series 2023, plus General Supplemental Specifications and Supplemental Specifications effective at the time of letting, shall apply to this project. The item's description includes applicable IDOT specification sections.



Drawn by: ZG	
Revision	Date