

ADDENDUM #2

Project Name:

MPCF Window Replacement (West Wing & South Core)

DAS#9021.00 & .01

RFB0919335012

Architect: Design Alliance, Inc., Arch. Proj. #218020

Addendum #2

Dated: Sept. 21st, 2018

This Addendum forms a part of the bidding and contract documents. This Addendum supersedes and supplements all portions of the original bidding and contract documents dated August 31st, 2018 with which it conflicts.

ACKNOWLEDGE RECEIPT OF THIS ADDENDUM IN THE SPACE PROVIDED ON THE BID FORM. FAILURE TO DO SO MAY SUBJECT THE BIDDER TO DISQUALIFICATION.

1. GENERAL CLARIFICATIONS

- A. None noted

2. SPECIFICATIONS

- A. 01 1200-4, 109 Bid Package Instructions, Bid Package #01 (BP-01) add the following: 6. "Contractor shall remove and reinstall venting/fans at window openings. Contractor to provide and install sheetmetal adapters, fittings, etc. as necessary.
- B. 01 1200-4, 109 Bid Package Instructions, Bid Package #01 (BP-01) add the following: 7. "Contractor shall paint all abated headers in West Wing.

3. DRAWINGS

- A. Drawing A1.1 Basement Floor Plan, Change type W-M to W-P.
- B. Drawing A2.1 Exterior Elevations, 4 West Wing – West, replace "Existing W-F Windows to Remain." with "New W-F windows"

4. QUESTIONS

- A. Addendum #1 noted W-F windows on A2.1, West Wing – West, Elevation 9 as “Existing W-F Windows to remain, screens to be mounted on the interior.” Is this correct? **A> No. Replace "Existing W-F Windows to Remain." with "New W-F windows"**.
- B. Who provides and installs the 4X4 structural tube as noted on detail 17/A5.0? **A> Bid Package BP-01**
- C. Who is responsible for air monitoring and clearance testing for the asbestos removal? **A> Air monitoring and clearance testing will be provided by owner.**

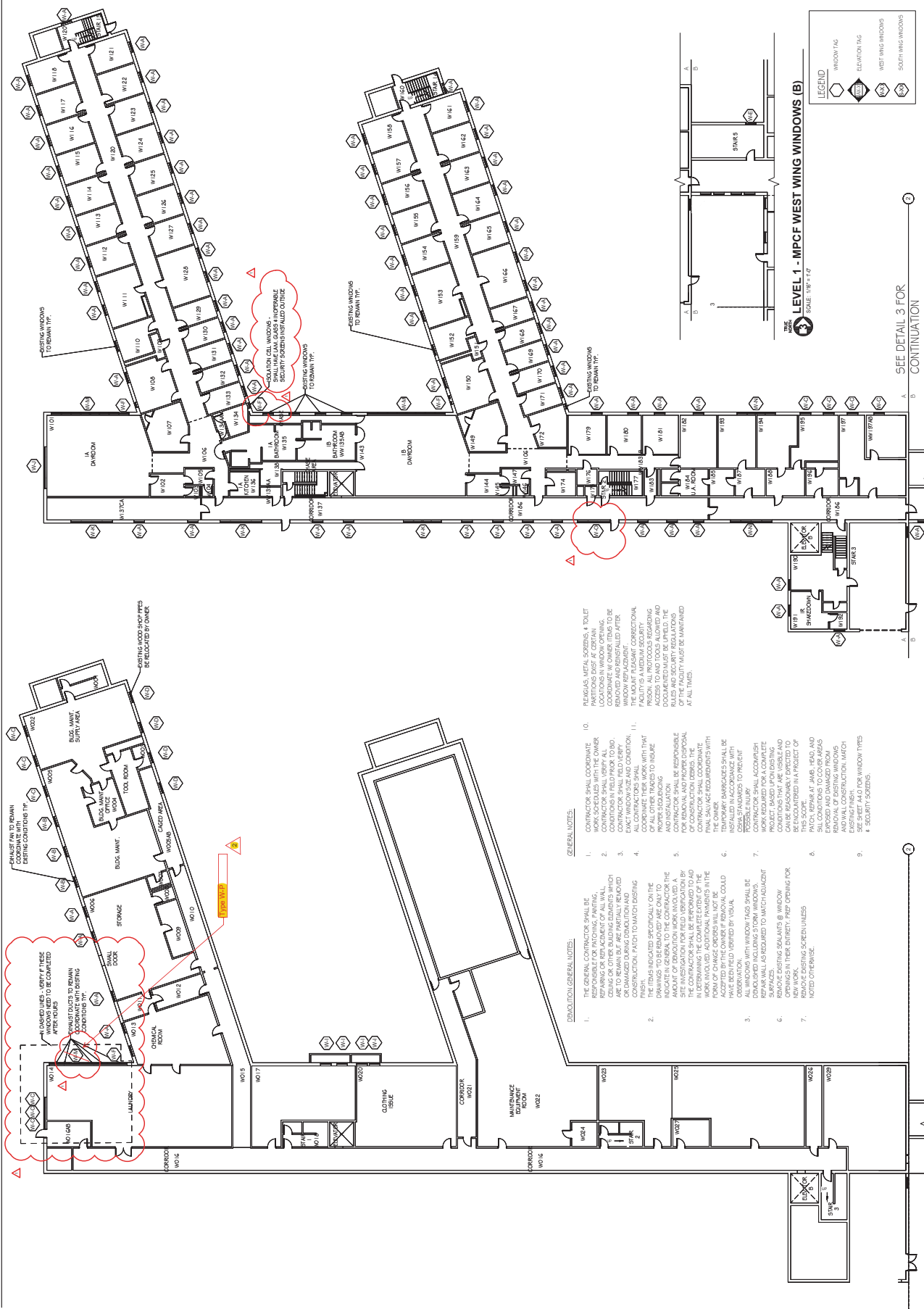
5. APPROVED MANUFACTURERS

- A. None noted

6. ATTACHMENTS

- A. Drawings A1.1 and A2.1

END OF ADDENDUM



BASEMENT - MPCF WEST WING WINDOWS
 SCALE: 1/8" = 1'-0"

LEVEL 1 - MPCF WEST WING WINDOWS (A)
 SCALE: 1/8" = 1'-0"

LEVEL 1 - MPCF WEST WING WINDOWS (B)
 SCALE: 1/8" = 1'-0"

SEE DETAIL 3 FOR CONTINUATION

