

ADDENDUM #1**Project Name:****Iowa School for the Deaf (ISD) Girls Dormitory Repairs****DAS# 9356.00****RFB 935600-01****Addendum #1****Dated: September 12, 2024**

This Addendum forms a part of the bidding and contract documents. This Addendum supersedes and supplements all portions of the original bidding and contract documents dated Aug. 14, 2024 with which it conflicts.

ACKNOWLEDGE RECEIPT OF THIS ADDENDUM IN THE SPACE PROVIDED ON THE BID FORM. FAILURE TO DO SO MAY SUBJECT THE BIDDER TO DISQUALIFICATION.

1) CLARIFICATIONS

- A. The Pre-bid meeting on Tuesday, September 17, 2024 at 10:00 am, will be held at the Lied Multipurpose Complex. Parking is located on the SE side of the building. See attached map for location and parking.

2) PLANS

- A. Refer to ETI's Addendum #1, attached, including revised Sheets E2.3, E2.4, and E5.0.

3) QUESTIONS AND CLARIFICATIONS

- A. No items.

4) SUBSTITUTION REQUESTS

- A. No items.

5) ATTACHMENTS

- A. Pre-bid Meeting Location and Parking (1 page)
- B. ETI Addendum #1 (1 page)
- C. Revised Plan Sheets: E2.3 – Second Floor Electrical Plans, E2.4 – Third Floor Electrical Plans, and E 5.0 – Electrical Schedules. (3 pages)

END OF ADDENDUM



FROM I-80

Take Exit 4 to I-29 South. Take IA-92/US-275 N Exit 47 toward Lake Manawa.
This exit appears shortly after entering I-29.
Turn right (east) onto I-92 Veterans Memorial Hwy.
Turn right (south) onto Harry Langdon Blvd/Wabash Trace.
The school entrance is on the left (the road makes a Y).

From I-29

Take IA-92/US-275 N Exit 47 toward Lake Manawa.
Turn right (east) onto I-92 Veterans Memorial Hwy.
Turn right (south) onto Harry Langdon Blvd/Wabash Trace.
The school entrance is on the left (the road makes a Y).



DATE ISSUED September 12, 2024

ADDENDUM # 1

ENGINEER Engineering Technologies, Inc.
1101 North 13th Street
Omaha, NE 68102

ETI PROJECT # 2024-063

PROJECT DOE ISD Girls Dormitory Repairs

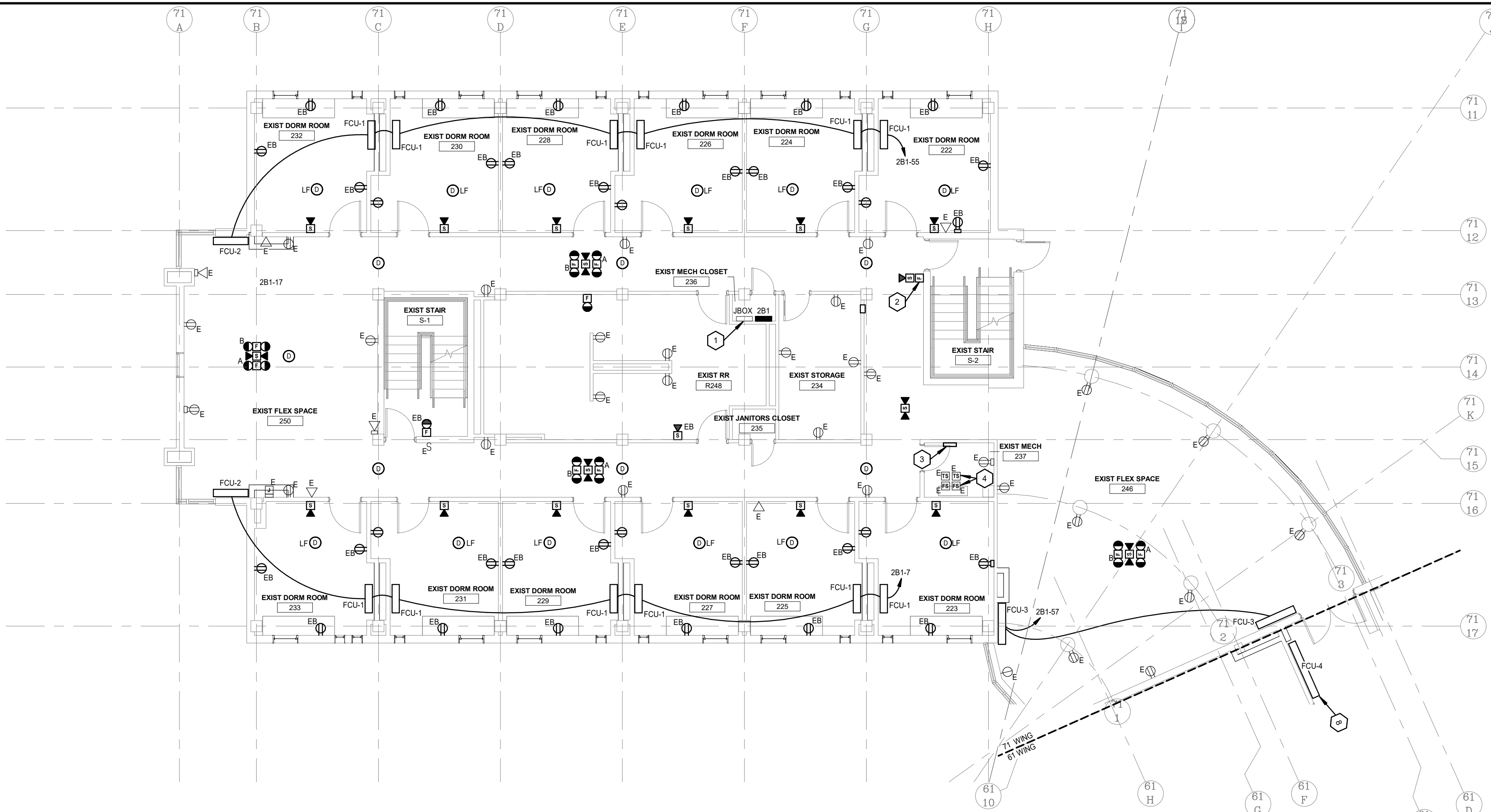
The Architect issues this Addendum to all known bidders before receipt of proposals. Bidder shall acknowledge the receipt of this addendum on their proposal sheet and all information contained herein shall become a part of the contract documents.

ADDENDUM:

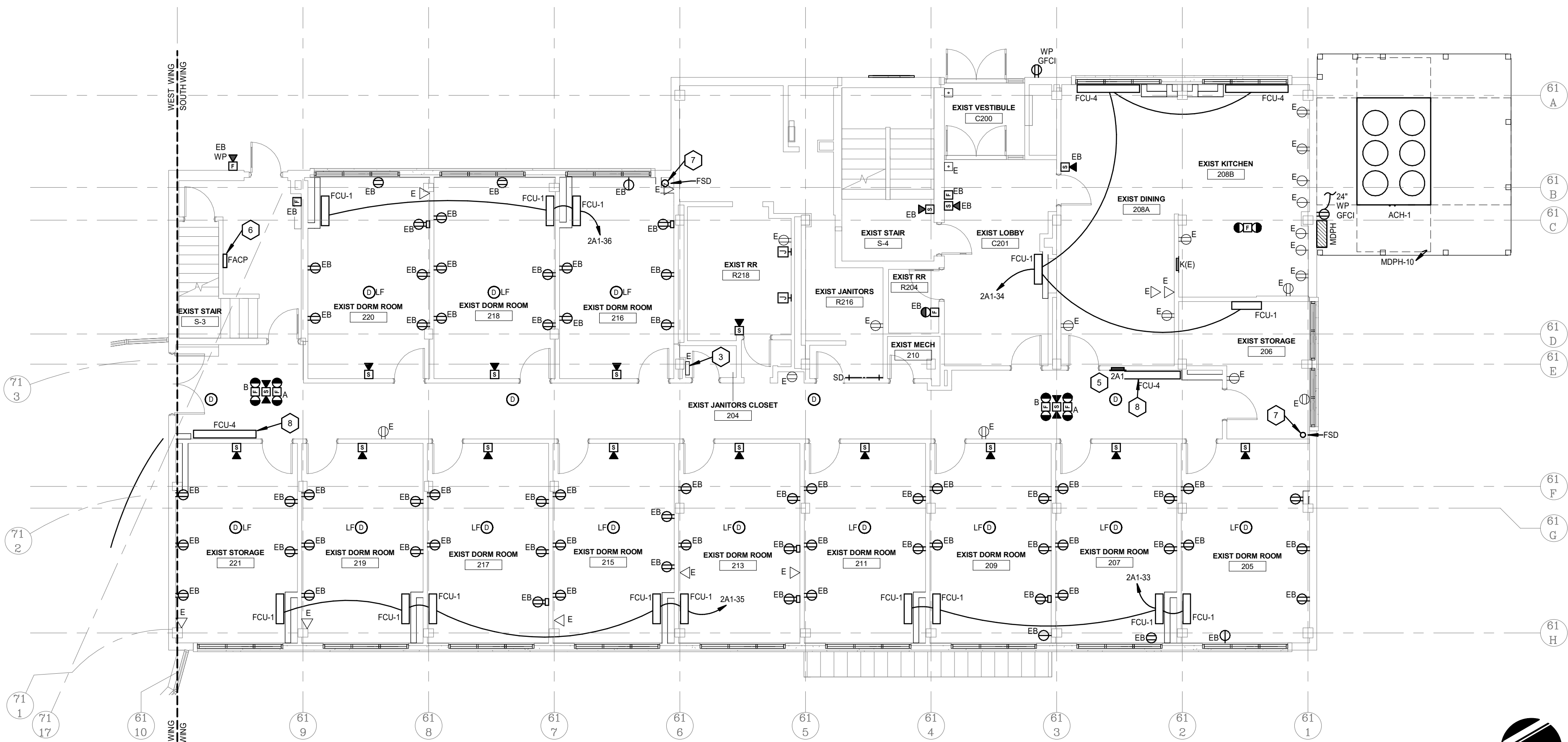
DRAWINGS – ELECTRICAL

1. Sheet E2.3 Second Floor Electrical Plans
 - A. Revise Sheet Note #8.
2. Sheet E2.4 Third Floor Electrical Plans
 - A. Revise Sheet Note #8.
3. Sheet E5.0 Electrical Schedules
 - A. Equipment Connection Schedule – Add notes for ERV-1 and ERV-1 (ALT).

END OF ADDENDUM



1 71 WING SECOND FLOOR ELECTRICAL PLAN
SCALE: 1/8" = 1'-0"

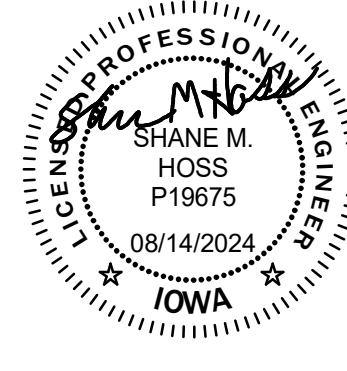


2 61 WING SECOND FLOOR ELECTRICAL PLAN
SCALE: 1/8" = 1'-0"

SHEET NOTES

- DEMOLISH PANEL BOX, PROVIDE BLANK COVERPLATE AND USE AS JUNCTION BOX.
- EXISTING MANUAL PULL STATIONS ARE ABOVE ADA HEIGHT. PROVIDE SURFACE RACEWAY TO MOVE DEVICES DOWN TO 48" AFF. TO TOP. (TYPICAL)
- PROPOSED LOCATION OF NEW FIRE ALARM EXTENDED PANEL. CONNECT TO EXISTING POWER CIRCUIT.
- EXISTING FLOW AND TAMPER SWITCHES. RECONNECT TO NEW ALARM SYSTEM.
- MOUNT NEW PANEL IN PLACE OF DEMOLISHED FLUSH MOUNTED PANEL. CUT AND PATCH EXISTING WALL AS REQUIRED.
- PROPOSED LOCATION OF NEW FIRE ALARM CONTROL PANEL. CONNECT TO EXISTING POWER CIRCUIT.
- MOTORIZED FIRE SMOKE DAMPER (FSD) AND CONTROL RELAY. FIRE SMOKE DAMPER SHALL BE POWER OPEN / SPRING CLOSED. RELAY SHALL BE INTERCONNECTED WITH THE FIRE ALARM SYSTEM AND ASSOCIATED HVAC EQUIPMENT SO THAT WHEN THE FIRE ALARM SYSTEM IS ACTIVATED, THE DAMPER SHALL CLOSE AND ASSOCIATED HVAC EQUIPMENT SHALL SHUTDOWN. (TYPICAL)

~~DELETE AS PART OF BID ALTERNATE 1~~



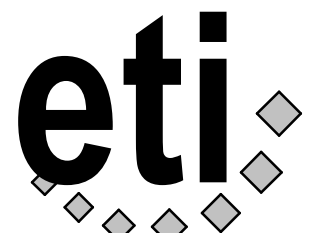
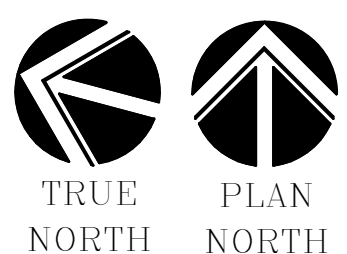
hgm
ASSOCIATES INC.
ENGINEERING ARCHITECTURE SURVEYING
council bluffs omaha

this drawing is being made in accordance with the terms of the agreement between hgm associates inc. and doe isd girls dormitory repairs. hgm associates inc. assumes no liability for any use of this drawing except in accordance with the terms of the above agreement.

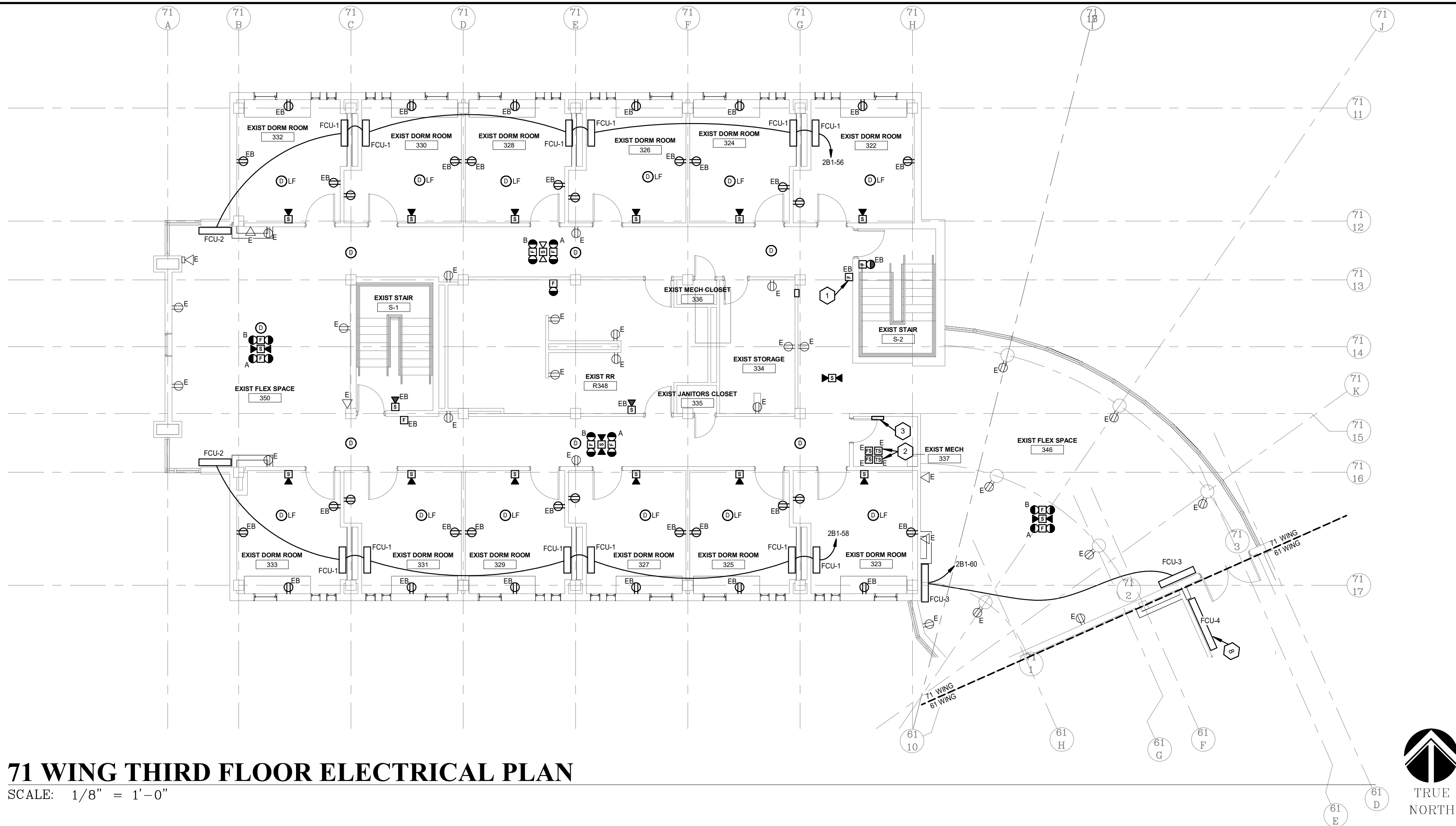
Rev#	Date
1	09.12.2024
EAR	drawn
ADW/SMH	designed
SMH	approved
8-28-24	date

project **DOE ISD GIRL'S DORMITORY REPAIRS**
3501 HARRY LANGDON BLVD. COUNCIL BLUFFS, IA 51503
client **IOWA DEPARTMENT OF ADMINISTRATIVE SERVICES**
sheet **SECOND FLOOR ELECTRICAL PLANS**

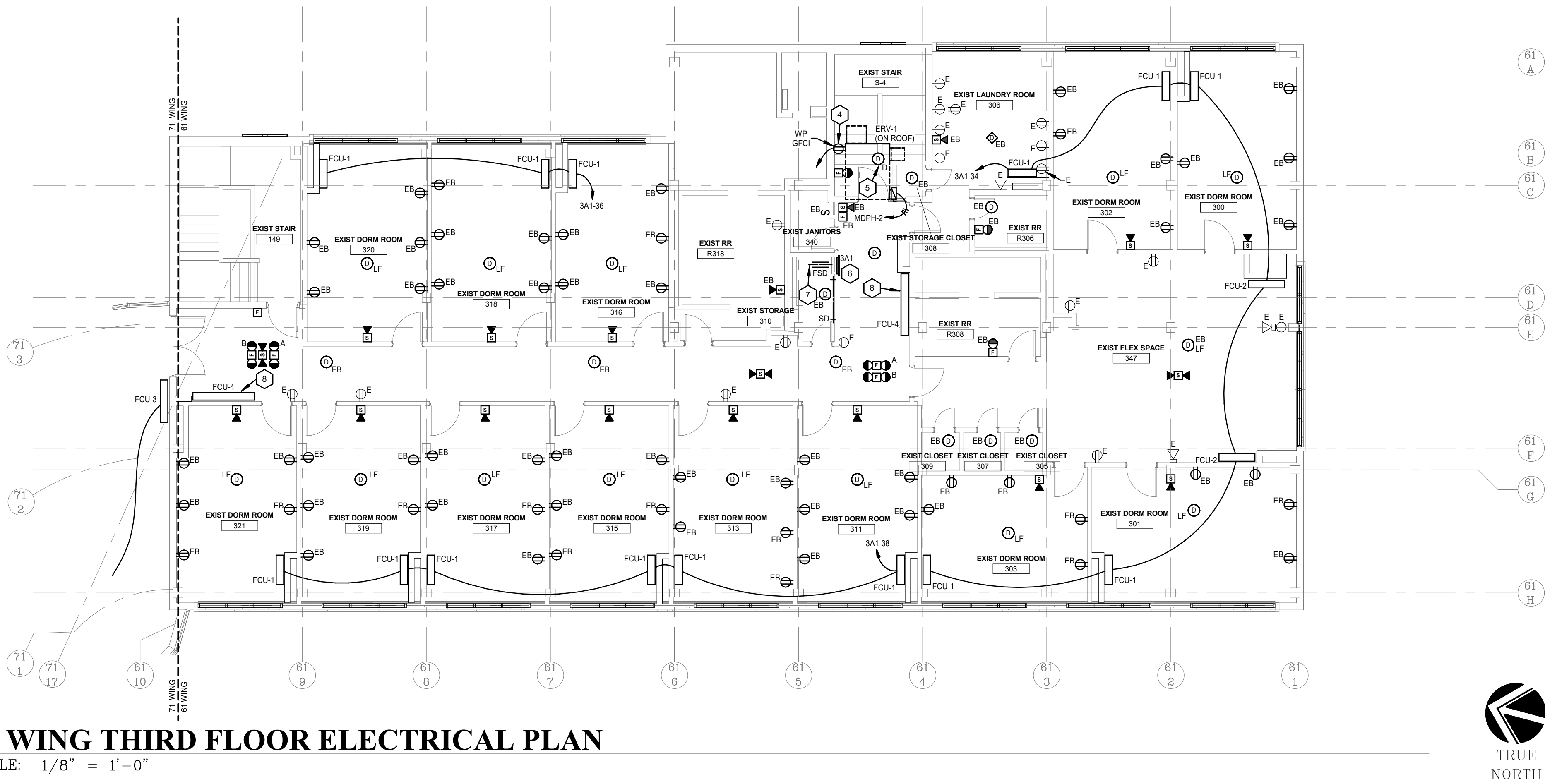
project no. **105023A**
9356.00
RFB #935600-01
sheet
E2.3



Engineering Technologies Inc.
Mechanical & Electrical Building Solutions
1181 N. 13th St. | Omaha, NE 68102
P 402-330-2772
825 M Street, Suite 200 | Lincoln, NE 68508
P 402-476-1273 | F 402-476-1274
ETI Project No: 2024-063



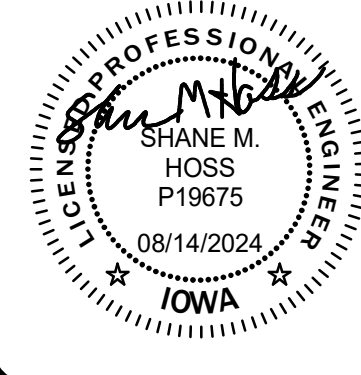
1 71 WING THIRD FLOOR ELECTRICAL PLAN
SCALE: 1/8" = 1'-0"



2 61 WING THIRD FLOOR ELECTRICAL PLAN
SCALE: 1/8" = 1'-0"

SHEET NOTES

- EXISTING MANUAL PULL STATIONS ARE ABOVE ADA HEIGHT. PROVIDE SURFACE RACEWAY TO MOVE DEVICES DOWN TO 48" AFF. TO TOP. (TYPICAL)
- EXISTING FLOW AND TAMPER SWITCHES. RECONNECT TO NEW ALARM SYSTEM
- PROPOSED LOCATION OF NEW FIRE ALARM EXTENDED PANEL. CONNECT TO EXISTING POWER CIRCUIT.
- MOUNT OUTLET TO ROOF MOUNTED MECHANICAL EQUIPMENT. DO NOT BLOCK ACCESS PANELS. ROUTE CONDUIT THRU ROOF HOOD.
- PROVIDE DUCT MOUNTED SMOKE DETECTOR IN SUPPLY DUCT OF MECHANICAL EQUIPMENT. PROVIDE CONTROL RELAYS AND CONNECT TO THE FIRE ALARM SYSTEM AND EQUIPMENT CONTROLS FOR UNIT SHUTDOWN.
- MOUNT NEW PANEL IN PLACE OF DEMOLISHED FLUSH MOUNTED PANEL. CUT AND PATCH EXISTING WALL AS REQUIRED.
- MOTORIZED FIRE SMOKE DAMPER (FSD) AND CONTROL RELAY. FIRE SMOKE DAMPER SHALL BE POWER OPEN / SPRING CLOSED. RELAY SHALL BE INTERCONNECTED WITH THE FIRE ALARM SYSTEM AND ASSOCIATED HVAC EQUIPMENT SO THAT WHEN THE FIRE ALARM SYSTEM IS ACTIVATED, THE DAMPER
- DELETE AS PART OF BID ALTERNATE 2



hgm
ASSOCIATES INC.
ENGINEERING ARCHITECTURE SURVEYING
council bluffs omaha

this drawing is being made
in accordance with the
inc. for use on this project in
accordance with hgm
associated with this project
professional services. hgm
associates inc. assumes no
liability for any use of this
drawing except in accordance with the
terms of the above
agreement.

Rev#	Date
1	09.12.2024
EAR	drawn
ADW/SMH	designed
SMH	approved
8-28-24	date

project **DOE ISD GIRL'S DORMITORY REPAIRS**
3501 HARRY LANGDON BLVD. COUNCIL BLUFFS, IA 51503
client **IOWA DEPARTMENT OF ADMINISTRATIVE SERVICES**
sheet **THIRD FLOOR ELECTRICAL PLANS**

project no.
105023A
9356.00
RFB #935600-01
sheet
E2.4



eti
Engineering Technologies Inc.
Mechanical & Electrical Building Solutions
1181 N. 13th St. | Omaha, NE 68102
P 402-530-2772
825 M Street, Suite 200 | Lincoln, NE 68508
P 402-476-1273 | F 402-476-1274
ETI Project No: 2024-063

INTERIOR LIGHT FIXTURE SCHEDULE										
TYPE	DESCRIPTION	LAMP TYPE	LUMENS	COLOR TEMP	WATTS	MOUNTING	MANUFACTURER	CATALOG NUMBER	ACCEPTABLE MANUFACTURERS	NOTES
1A	4-FT LOW PROFILE WRAPAROUND, DIFFUSING LENS	LED	4000	3500K	32	SURFACE, CEILING	SLG	TRC-4-40-G1-FSK	LITHONIA METALUX COLUMBIA DAYBRITE	
1B	4-FT LOW PROFILE WRAPAROUND, DIFFUSING LENS, INTEGRAL DIMMING OCCUPANCY SENSOR, 0-10V DIMMABLE	LED	4000	3500K	32	SURFACE, CEILING	SLG	TRC-4-40-G1-FSK-MS-ACE-01	LITHONIA METALUX COLUMBIA DAYBRITE	
2	2X2 BACKLIT TROFFER, FLUSH ACRYLIC LENS	LED	2000	3500K	16	RECESSED, GRID	LITHONIA	CPX-2X2-2000LM-80CRI-35K-SWL-MIN10-MVO-LT	METALUX COLUMBIA	
2SD	2X2 BACKLIT TROFFER, FLUSH ACRYLIC LENS, STEP DIMMING (TWO CONNECTIONS)	LED	2000	3500K	16	RECESSED, GRID	LITHONIA	CPX-2X2-2000LM-80CRI-35K-SWL-MIN10-MVO-LT	METALUX COLUMBIA	
3	4-FT STRIPLIGHT WITH ROUND ACRYLIC LENS	LED	6000	3500K	45	SURFACE	SLG	TSC-4-60-G1-FSK	LITHONIA METALUX COLUMBIA	
4E	4-FT LOW PROFILE WRAPAROUND, DIFFUSING LENS, 0-10V DIMMABLE, INTEGRAL HIGHLOW OCCUPANCY SENSOR, INTEGRAL BATTERY	LED	6000	3000K	49	SURFACE, CEILING	LITHONIA	BLWP4-60L-ADSM-GZ1-LP830-MSD7ADCX-DIM10-EL14L	METALUX COLUMBIA	
5	LED A-LAMP	LED	800	3000K	10	LAMP HOLDER	FEIT	A8083010KLED10/RP	-	
6	2X4 BACKLIT TROFFER, FLUSH ACRYLIC LENS	LED	4700	3500K	36	RECESSED, GRID	LITHONIA	CPX-2X4-AL08-80CRI-SWW7-SWL-MVOLT	METALUX COLUMBIA	
7	5-IN DIAMETER SLIM SURFACE DOWNLIGHT	LED	650	3500K	7	SURFACE, CEILING	SLG	DS-SR-LS10-G2-9FSK	JUNO HALO ELITE	
8A	2-FT LINEAR VANITY, SQUARE ACRYLIC LENS	LED	1300	3000K	15	SURFACE, WALL	RP LIGHTING	4907-BN-24	LITHONIA	
8B	3-FT LINEAR VANITY, SQUARE ACRYLIC LENS	LED	1600	3000K	25	SURFACE, WALL	RP LIGHTING	4907-BN-36	LITHONIA	
9	4FT FLEXIBLE LINEAR TAPELIGHT, ALUMINUM CHANNEL WITH ACRYLIC LENS	LED	75FT	3500K	0.75 PER FT	SURFACE, UNDERCABINET	ACOLYTE	RB-Q-SWS220-0.75-35K	LED LINEAR DIODE	2
10E	13-INCH DIAMETER LOW PROFILE CANOPY LIGHT, VANDAL RESISTANT, INTEGRAL BATTERY AND PHOTOCELL	LED	1200	3000K	16	SURFACE, CEILING	LUMINAIRE LED	APX13-NODIM-15W-35K-120-FOP-WHT-EMB31-D-SHCAB-PC	KENALL	
11	EXTERIOR WEDGE PROFILE WALLPACK, WET LOCATION, INTEGRAL PHOTOCELL	LED	1100	3000K	10	SURFACE, WALL	LITHONIA	WDGE1LED-P2-30K-80CRI-VF-MVOLT-SRM-PE-0087AD	SPITZER	
11E	EXTERIOR WEDGE PROFILE WALLPACK, WET LOCATION, INTEGRAL PHOTOCELL AND BATTERY	LED	1100	3000K	10	SURFACE, WALL	LITHONIA	WDGE1LED-P2-30K-80CRI-VF-MVOLT-SRM-PE-0087AD	SPITZER	
12	7-IN DIAMETER SLIM SURFACE DOWNLIGHT	LED	800	3500K	8	SURFACE, CEILING	SLG	DS-7R-LS14-G2-9FSK	JUNO HALO ELITE	
EM1	EMERGENCY LIGHTING UNIT, THERMOPLASTIC HOUSING, TWO ADJUSTABLE HEADS, INTEGRAL BATTERY	LED	-	-	-	SURFACE, WALL	LITHONIA	EUZL	EVENLITE ISOLITE LITEALARMS	
EM2	EMERGENCY LIGHTING UNIT, THERMOPLASTIC HOUSING, TWO ADJUSTABLE HEADS, INTEGRAL BATTERY	LED	-	-	-	SURFACE, WALL	LITHONIA	ELM2L-M12	EVENLITE ISOLITE LITEALARMS	
EX1	SINGLE FACE EXIT SIGN, THERMOPLASTIC HOUSING, RED LETTERS, INTEGRAL BATTERY	LED	-	-	-	UNIVERSAL SEE PLANS	LITHONIA	EXRG-EL-M6	EVENLITE ISOLITE LITEALARMS	1
EX2	SINGLE FACE EXIT SIGN WITH TWO ADJUSTABLE HEADS, THERMOPLASTIC HOUSING, RED LETTERS, INTEGRAL BATTERY	LED	-	-	-	UNIVERSAL SEE PLANS	LITHONIA	ECRG-RD-M6	EVENLITE ISOLITE LITEALARMS	1
NOTES: 1. PROVIDE WITH MOUNTING, CHEVRONS, AND ARROWS AS INDICATED ON THE PLANS. 2. PROVIDE WITH REMOTE POWER SUPPLY, CONNECTORS, MOUNTING, AND ACCESSORIES AS REQUIRED FOR A COMPLETE AND OPERATIONAL SYSTEM.										

LIGHTING CONTROL SCHEDULE										
TAG	MOTION SENSOR SETTINGS			DIMMING	LOCAL ON/OFF	TIME-DELAY OFF (MIN)	TIME-DELAY ON (MIN)	EXTERIOR PHOTOCELL CONTROL	BUILDING NETWORKED LIGHTING CONTROL SYSTEM	EXAMPLE SPACE TYPE
	MANUAL ON	AUTO ON (%)	TIME-DELAY OFF (MIN)							
A	-	-	-	X	-	-	-	-	-	DORM ROOM
B	-	100	20	-	-	-	-	-	-	CORRIDORS, VESTIBULE, MULTI-STALL RESTROOM
C	-	100	20	X	-	-	-	-	-	PLEX LAUNDRY, SINGLE STALL RESTROOM, OFFICE
D	X	-	10	X	-	-	-	-	-	STORAGE, JANITOR
E	-	100	20	-	X	-	-	-	-	STAIRWELL
F	-	-	-	X	-	-	-	-	-	MECH, ELEC, KITCHEN
GENERAL NOTES: A. WHERE A LOW VOLTAGE SWITCH IS INDICATED ON THE PLANS WITH NO SUBSCRIPT, PROVIDE A 2-BUTTON ON/OFF SWITCH TO CONTROL ALL LIGHTING IN A SPACE. WHERE SUBSCRIPTS ARE INDICATED ON A LOW VOLTAGE SWITCH, PROVIDE SEPARATE ON/OFF BUTTONS FOR EACH SUBSCRIPT (LIGHTING ZONE). B. WHERE DIMMING AND LOCAL ON/OFF IS INDICATED FOR A SPACE, PROVIDE LOW VOLTAGE SWITCH WITH SEPARATE RAISE AND LOWER BUTTONS FOR EACH ZONE INDICATED ON THE LOW VOLTAGE SWITCH. C. WHERE DIMMING IS INDICATED, PROVIDE DIMMING LOAD CONTROLLERS COMPATIBLE WITH LIGHT FIXTURES BEING PROVIDED. PROVIDE A DIMMING LOAD CONTROLLER FOR EACH LIGHT FIXTURE TYPE WITHIN A COMMON DIMMING ZONE. D. REFER TO THE LIGHTING CONTROLS SPECIFICATION FOR ADDITIONAL REQUIREMENTS. E. PROGRAMMING SHALL BE COMPLETED PRIOR TO THE DESIGN TEAMS FINAL WALKTHROUGH OR BUILDING OCCUPANCY, WHICHEVER COMES FIRST. COORDINATE ADDITIONAL TRIPS REQUIRED WITH PROJECT PHASING.										
NOTES: 1. PROVIDE MOTION SENSOR WITH ON/OFF BUTTONS, WHERE INDICATED AS WALL MOUNT ON THE PLANS. 2. AFTER TIME-DELAY OFF, DIM LIGHTS TO 10% OF FULL OUTPUT. RAISE TO 100% UPON MOTION. 3. REFER TO LIGHT FIXTURE SCHEDULE FOR INTERNAL HIGHLOW SENSOR.										

EQUIPMENT CONNECTION SCHEDULE										
EQUIP.	DESCRIPTION	KW	HP	VOLTS	PHASE	WIRING	DISCONNECT SWITCH	MOTOR STARTER	CONNECTION	NOTES
ACH-1	AIR COOLED CHILLER	132	-	480	3Ø	3-3Ø & #6 GND 2.00' CONDUIT	INTEGRAL	-	DIRECT	-
CRU-1	CONDENSATE RETURN UNIT	-	3	208	3Ø	3-#12 & #12 GND 0.75' CONDUIT	INTEGRAL	INTEGRAL	DIRECT	-
CRU-2,3,4	CONDENSATE RETURN UNIT	-	F	120	1Ø	2-#12 & #12 GND 0.75' CONDUIT	PLUG	INTEGRAL	CORD & PLUG	-
CWP-1,2	CHILLED WATER PUMP	-	7 1/2	480	3Ø	3-#12 & #12 GND 0.75' CONDUIT	INTEGRAL TO VFD	VFD	DIRECT	VFD TO BE PROVIDED AND INSTALLED BY THE MECHANICAL CONTRACTOR. THIS CONTRACTOR TO MAKE AL LINE VOLTAGE CONNECTIONS
ERV-1	ENERGY RECOVERY VENTILATOR	10	(2) 1/3	480	3Ø	3-#10 & #10 GND 0.75' CONDUIT	30A FUSED NEMA 3R	-	DIRECT	PROVIDE AS PART OF BASE BID.
ERV-1 (ALT)	ENERGY RECOVERY VENTILATOR	43	(1) 3.1 (1) 4.4	480	3Ø	3-#4 & #8 GND 1.00' CONDUIT	100A FUSED NEMA 3R	-	DIRECT	PROVIDE AS PART OF BID ALTERNATE 2.
FCU-1	FAN COIL UNIT	0.15	-	120	1Ø	2-#12 & #12 GND 0.75' CONDUIT	LOCKABLE BREAKER	-	-	-
FCU-2	FAN COIL UNIT	0.15	-	120	1Ø	2-#12 & #12 GND 0.75' CONDUIT	LOCKABLE BREAKER	-	-	-
FCU-3	FAN COIL UNIT	0.15	-	120	1Ø	2-#12 & #12 GND 0.75' CONDUIT	LOCKABLE BREAKER	-	-	-
FCU-4	FAN COIL UNIT	0.3	-	120	1Ø	2-#12 & #12 GND 0.75' CONDUIT	LOCKABLE BREAKER	-	-	-
FCU-5	FAN COIL UNIT	0.15	-	120	1Ø	2-#12 & #12 GND 0.75' CONDUIT	LOCKABLE BREAKER	-	-	-
FCU-6	FAN COIL UNIT	0.15	-	120	1Ø	2-#12 & #12 GND 0.75' CONDUIT	LOCKABLE BREAKER	-	-	-
FCU-7	FAN COIL UNIT	0.4	-	120	1Ø	2-#12 & #12 GND 0.75' CONDUIT	LOCKABLE BREAKER	-	-	-
FCU-8	FAN COIL UNIT	1.0	-	120	1Ø	2-#12 & #12 GND 0.75' CONDUIT	LOCKABLE BREAKER	-	-	-
FSD	FIRE SMOKE DAMPER	-	F	120	1Ø	2-#12 & #12 GND 0.75' CONDUIT	SHP	RELAY	DIRECT	PROVIDE DUCT DETECTOR WITHIN 5'-0" OF EACH FSD WITH NO INLETS OR OUTLETS BETWEEN FSD AND DUCT DETECTOR. PROVIDE A RELAY AS REQUIRED AND CONNECT TO THE FIRE ALARM SYSTEM. PROVIDE CONTROL POWER FOR UP TO (10) FSD FROM A SPARE 20A1P BREAKER IN NEAREST 120V PANELBOARD.
GOWP-1,2	GLYCOL CHILLED WATER PUMP	-	7 1/2	480	3Ø	3-#12 & #12 GND 0.75' CONDUIT	INTEGRAL TO VFD	VFD	DIRECT	VFD TO BE PROVIDED AND INSTALLED BY THE MECHANICAL CONTRACTOR. THIS CONTRACTOR TO MAKE AL LINE VOLTAGE CONNECTIONS
GMU-1	GLYCOL MAKEUP UNIT	-	-	120	1Ø	2-#12 & #12 GND 0.75' CONDUIT	PLUG	-	CORD & PLUG	-
HWP-1,2	HOT WATER PUMP	-	5	480	3Ø	3-#12 & #12 GND 0.75' CONDUIT	INTEGRAL TO VFD	VFD	DIRECT	VFD TO BE PROVIDED AND INSTALLED BY THE MECHANICAL CONTRACTOR. THIS CONTRACTOR TO MAKE AL LINE VOLTAGE CONNECTIONS
SD	SMOKE DAMPER	-	F	120	1Ø	2-#12 & #12 GND 0.75' CONDUIT	SHP	-	DIRECT	-
GENERAL NOTES: A. LOW VOLTAGE HVAC CONTROL WIRING SHALL BE BY THE MECHANICAL CONTRACTOR UNLESS OTHERWISE NOTED.										