

# **Addendum 1 for RFB 949600-01**

Project Name: DOC NCCF Education Building Window Replacement

RFB#949600-01

DAS Project #: 9496.00

Date: 5/21/2026

Bids Due: June 1<sup>st</sup> 2026 by 2:00pm

## **Addendum #01**

### **Meeting Minutes & Attendance:**

Attached is the Pre-Bid Meeting Minutes and Sign In Sheet from the May 14<sup>th</sup> Pre-Bid Meeting at NCCF in the Powerhouse Building.

- a. No contractors in attendance.

### **Questions:**

Q1 – In reviewing the documents there are 3 types of windows in the specs, aluminum framed storefronts, steel windows and vinyl windows. I do not see on the plans a window schedule calling out what type material each window type is supposed to be.

A1 – Updated drawings will be provided in addendum to include material clarification for all window types.

### **General:**

Fire-rated windows are not required to be steel windows. Contractor can submit a substitution request for an alternate window material that complies with the fire-rating requirements and is self-closing.

### **Drawings:**

SHEET A3.00 – EXTERIOR ELEVATIONS & RFP

- b. Update Elevation - 1 East
  - i. Revise window B to match window schedule.

SHEET A5.00 - WINDOW AND DETIALS

- c. Add material clarification for all window types of A-L.

END OF ADDENDUM

No.	Mtg Origin	Title	Assignment	Due Date	Priority	Status
			<ul style="list-style-type: none"> <li>• Alternates                             <ul style="list-style-type: none"> <li>◦ Material cost option to provide window grid pattern (divided lite grid) in windows.</li> </ul> </li> <li>• Unit prices                             <ul style="list-style-type: none"> <li>◦ damaged plastering around windows needing patched &amp; prime painted. Owner to final paint locations. Add Plaster Patching &amp; Priming - \$/sf</li> </ul> </li> </ul>			

No.	Mtg Origin	Title	Assignment	Due Date	Priority	Status
2.2	1	Project Schedule				Open
<p><b>Description</b></p> <ol style="list-style-type: none"> <li>1. Contract(s) Issued: Week of June 8th</li> <li>2. Submittals: June 19th - July 10th</li> <li>3. Construction: September 7th, 2026</li> <li>4. Substantial Completion: November 10th, 2026</li> <li>5. Closeout: November 11th, 2026 - December 22nd, 2026</li> </ol> <p>A pull-plan session will be held with the successful bid package contractors to finalize the construction schedule.</p> <p>State Holidays: New Year's Day, Martin Luther King Day, Memorial Day, 4th of July, Labor Day, Veterans Day, Thanksgiving and day after Thanksgiving, Christmas Day</p>						

No.	Mtg Origin	Title	Assignment	Due Date	Priority	Status
2.3	1	Site Rules				Open
<p><b>Description</b></p> <ul style="list-style-type: none"> <li>• Onsite supervision by Prime Contractor is required at all times when work by that contractor or their subcontractors/suppliers is taking place.</li> <li>• Contractors shall provide daily logs for each day they are on site.</li> <li>• Construction progress meeting will be established once construction starts.</li> <li>• It is of the utmost importance to show respect and courtesy to all staff at all times.</li> <li>• Clean all debris, materials, and bring all finishes back to existing conditions in the area they were working in prior to moving to the next area.</li> <li>• No smoking, vaping or smokeless tobacco use onsite.</li> </ul> <p>Site Specific Rules</p> <ul style="list-style-type: none"> <li>• Temporary facilities by prime for their workers.</li> <li>• Tool control - NCCF will provide an orientation for all individuals prior to working onsite. This will include:                             <ol style="list-style-type: none"> <li>1. NCCF General Rules of Employee Conduct</li> <li>2. Dress Code and Appearance Guidelines</li> <li>3. IDOC Staff Sexual Misconduct with Offenders Policy</li> <li>4. PREA Policy and power point presentation to be completed by all site workers. This training takes about an hour and should be completed prior to the commencement of work.</li> <li>5. Tobacco Usage Policy</li> <li>6. IDOC/NCCF Entrance Procedure</li> </ol> </li> <li>• Cell phones - Cell phones, weapons, and cameras/camcorders are not allowed inside the facility.</li> <li>• No wearing Orange High Vis on site. Yellow or other colors are OK.</li> <li>• Crews foreman are asked to check in at front gate prior to getting on site and give a list of all persons working.</li> <li>• Background checks</li> </ul>						

## RFB Pre-Bid Minutes: Meeting #1

<b>Meeting Date</b>	May 14, 2026	<b>Meeting Time</b>	10:30 am - 11:00 am Central Time (US & Canada)
<b>Meeting Location</b>	North Central Correctional Facility		
<b>Overview</b>	Meeting to allow prospective bidders to visit the site, when possible, and learn more about the project.		
<b>Notes</b>			
<b>Attachments</b>	<a href="#">RFB 949600-01 Project Manual - Final .pdf</a> , <a href="#">26126 DOC DOC NCCF Education Building Window Replacement - 100% CD Drawings.pdf</a>		

### Scheduled Attendees

Name	Company	Phone Number	Email	Attendance
Brett Salzwedel	Cannon Moss Brygger Architects	P: (712) 499-0921	salzwedel.b@cmbaarchitects.com	Present
Adam Van Gorp	Cannon Moss Brygger Architects	P: (712) 262-3426	vangorp.a@cmbaarchitects.com	Absent
Noah Thelen	McGough Construction	P: (515) 639-3853	noah.thelen@mcgough.com	Present
Wade Hammen	North Central Correctional Facility	P: (515) 574-4700	wade.hammen@iowa.gov	Present
Jennie Elliott	State of Iowa - Department of Administrative Services		jennie.elliott@das.iowa.gov	Absent

### Introduction

No.	Mtg Origin	Title	Assignment	Due Date	Priority	Status
1.1	1	Introductions				Open
		<b>Description</b> Attendees				
		<b>Official Documented Meeting Minutes</b> No attendees present, meeting was cut short after waiting.				

### Project Overview

No.	Mtg Origin	Title	Assignment	Due Date	Priority	Status
2.1	1	Project Description				Open
		<b>Description</b> Removal and replacement of all windows (39) in the Educational Building at NCCF.				
		<ul style="list-style-type: none"> <li>• Base bid <ul style="list-style-type: none"> <li>◦ All material, labor and equipment associated with all work shown on the contract documents complete including the plans and specifications.</li> </ul> </li> </ul>				

No.	Mtg Origin	Title	Assignment	Due Date	Priority	Status
						<ul style="list-style-type: none"> <li>◦ Must be performed on all on site employees, including sub-contractors.</li> <li>◦ The Contractor hereby explicitly authorizes the Iowa DAS to conduct criminal history and/or other background investigation(s) of the Contractor, its officers, supervisory personnel, employees, and other staff retained by the Contractor or their sub-contractors for the performance of the contract.</li> <li>◦ A State of Iowa record check request form will be provided at the pre-construction meeting of successful bidder.</li> </ul> <ul style="list-style-type: none"> <li>• In addition to background checks all contractors who will be working onsite will need to take the PREA test which can be found here: <a href="https://docs.google.com/presentation/d/1_8lcvvpMCYdqasseVuOxzy2ISqjS3RUi6Oups7t6-zA/pub?start=false&amp;loop=false&amp;delayms=3000&amp;slide=id.p">https://docs.google.com/presentation/d/1_8lcvvpMCYdqasseVuOxzy2ISqjS3RUi6Oups7t6-zA/pub?start=false&amp;loop=false&amp;delayms=3000&amp;slide=id.p</a></li> <li>• Work hours: 7am - 4:00pm, Monday through Friday unless arrangements are made in advance.</li> <li>• View Specification 01 1200 - Contract Summary for more information.</li> </ul>

**RFB Overview**

No.	Mtg Origin	Title	Assignment	Due Date	Priority	Status
3.1	1	Bid Submission				Open
<p><b>Description</b></p> <ul style="list-style-type: none"> <li>• Bids are due By <b>2:00pm Monday, June 1st, 2026</b></li> <li>• The Bid shall be submitted to the Issuing Officer through the IMPACS Electronic Procurement System.                             <ul style="list-style-type: none"> <li>◦ Link and information is in the project manual</li> <li>◦ Contractors will need to register prior to bidding</li> <li>◦ Bidders will need to register regardless of whether it has already done business with the State of Iowa.</li> <li>◦ Bidders should complete the registration process and ensure the ability to log in as soon as possible to ensure Bids can be submitted on the due date.</li> <li>◦ Please make sure the electronic documents submitted contain any required signatures. Digital signatures will be accepted.</li> </ul> </li> <li>• Bid Opening will be held via conference call on <b>Monday, June 1st, 2026 at 3:00pm</b></li> <li>• Contractor shall reference section 00 0116 for the bid submittal checklist                             <ul style="list-style-type: none"> <li>◦ Bid Proposal Information</li> <li>◦ Non Discrimination Clause Information</li> <li>◦ Contractor Targeted Small Business Enterprise Pre-Bid Contract Information</li> <li>◦ Bid Security – 5% of total Bid amount</li> </ul> </li> <li>• Apparent low bidder will be required to submit subcontractor/supplier list 48hrs after the bid opening</li> </ul>						

No.	Mtg Origin	Title	Assignment	Due Date	Priority	Status
3.2	1	Bid Schedule				Open
<p><b>Description</b></p> <ul style="list-style-type: none"> <li>• Questions/Substitutions Due in Writing to <a href="mailto:Construction.Procurement@das.iowa.gov">Construction.Procurement@das.iowa.gov</a> : <b>By 2:00pm, May 21st, 2026</b></li> <li>• Addendum Issued: <b>Week of 5/25</b></li> <li>• Bids Due: <b>June 1st 2026 by 2:00pm</b></li> <li>• Tentative NOI Issued: <b>Week of June 1st, 2026</b></li> </ul> <p><b>DAS Email has changed, please verify Procurement email.</b></p>						

No.	Mtg Origin	Title	Assignment	Due Date	Priority	Status
3.3	1	Administrative Details				Open
<b>Description</b> <ul style="list-style-type: none"> <li>• Contractors will sign a modified ConsensusDocs 802. Example in the project manual.</li> <li>• Project-specific Certificate of Insurance must be provided prior to contract execution. Follow example in the project manual and limits in the 802.</li> <li>• Project-specific P&amp;P bonds must be provided prior to contract execution.</li> <li>• Successful contractor must turn in their list of subcontractors and suppliers within 48 hours of the bid.</li> <li>• DAS will provide tax exempt certificates upon request.</li> <li>• Procore will be used for all project management, at no cost to the trade contractor.                             <ul style="list-style-type: none"> <li>◦ Submittals, Invoicing, RFIs, ASIs, PRs, RFQs</li> <li>◦ Contracts, Change Orders and Certificates of Substantial and Final Completion will also use DocuSign</li> </ul> </li> <li>• Contractor Schedule of Values shall be broken out as specified in the project manual.                             <ul style="list-style-type: none"> <li>◦ SOV must contain a closeout line item for at least 1% of the total contract value.</li> <li>◦ This line item can only be invoiced once the certificate of final completion has been signed by all parties.</li> </ul> </li> </ul>						

No.	Mtg Origin	Title	Assignment	Due Date	Priority	Status
3.4	1	Pre-Bid Site Visits				Open
<b>Description</b> <i>Review site and perform job walk.</i>						

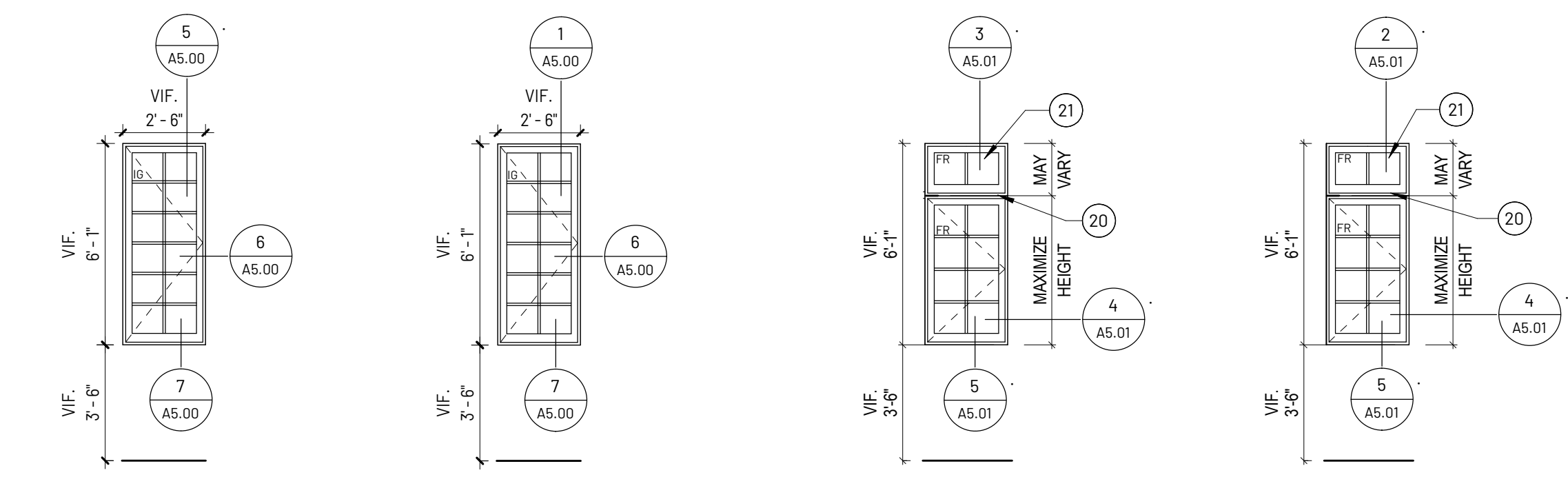
**Questions**

No.	Mtg Origin	Title	Assignment	Due Date	Priority	Status
4.1	1	Questions				Open
<b>Description</b> Submit all questions in writing to <a href="mailto:construction.procurement@das.iowa.gov">construction.procurement@das.iowa.gov</a> .						

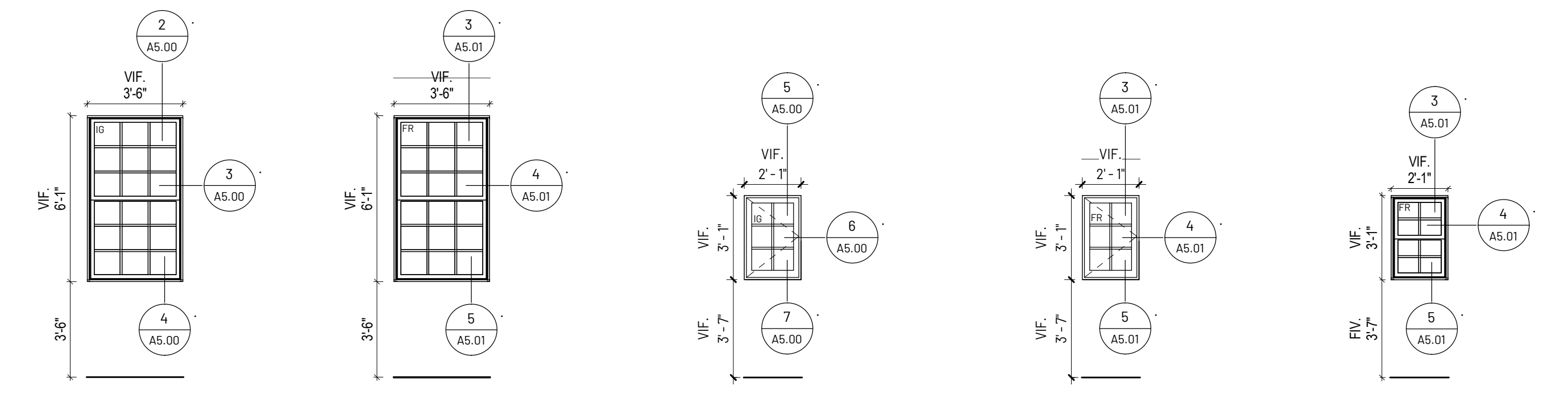
These meeting minutes are believed to be an accurate reflection of those items discussed and the conclusions that were reached during the referenced meeting. Please contact State of Iowa - Department of Administrative Services if there are any discrepancies or questions with the content of these minutes.



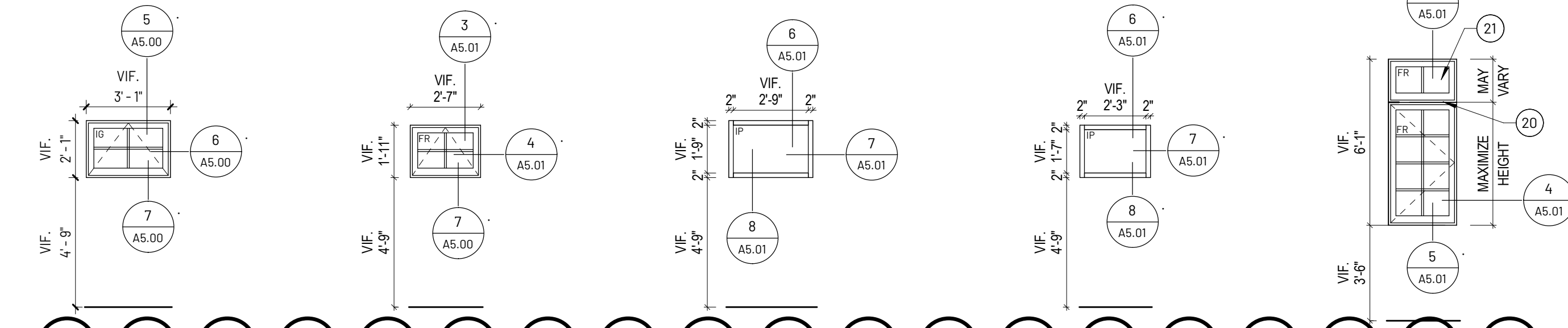
**WINDOWS**



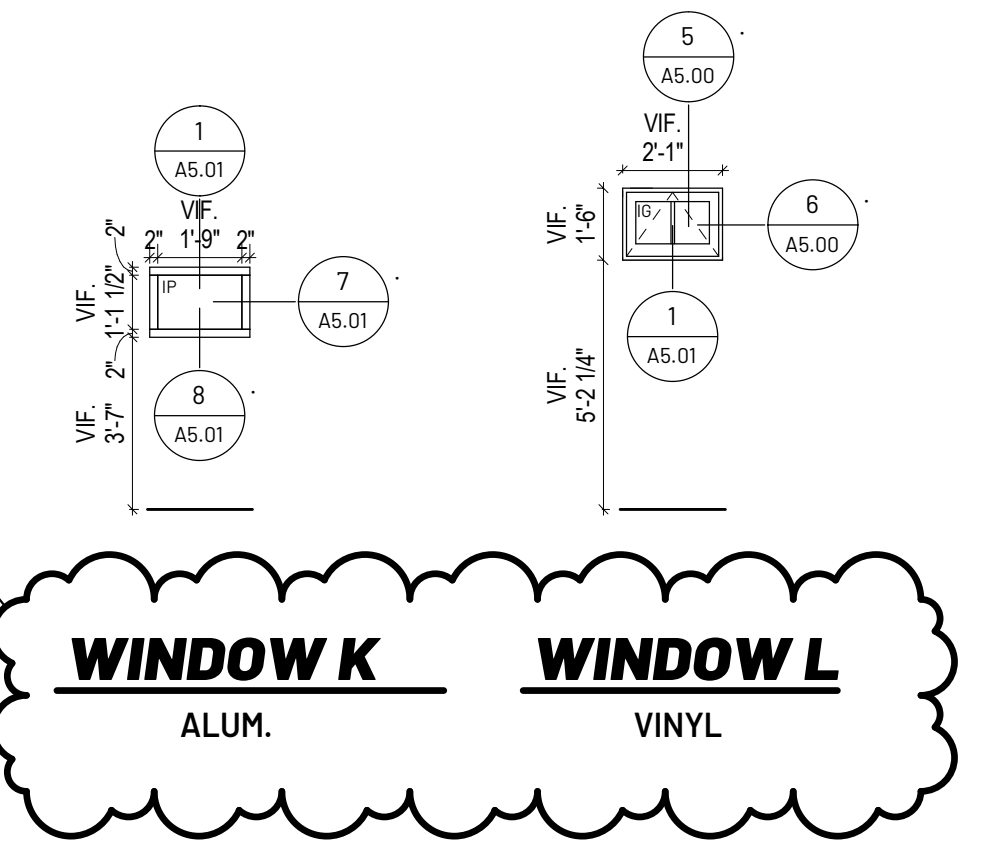
**WINDOW A** VINYL  
**WINDOW A.1** VINYL  
**FIRE RATED WINDOW B** STEEL  
**FIRE RATED WINDOW B.1** STEEL



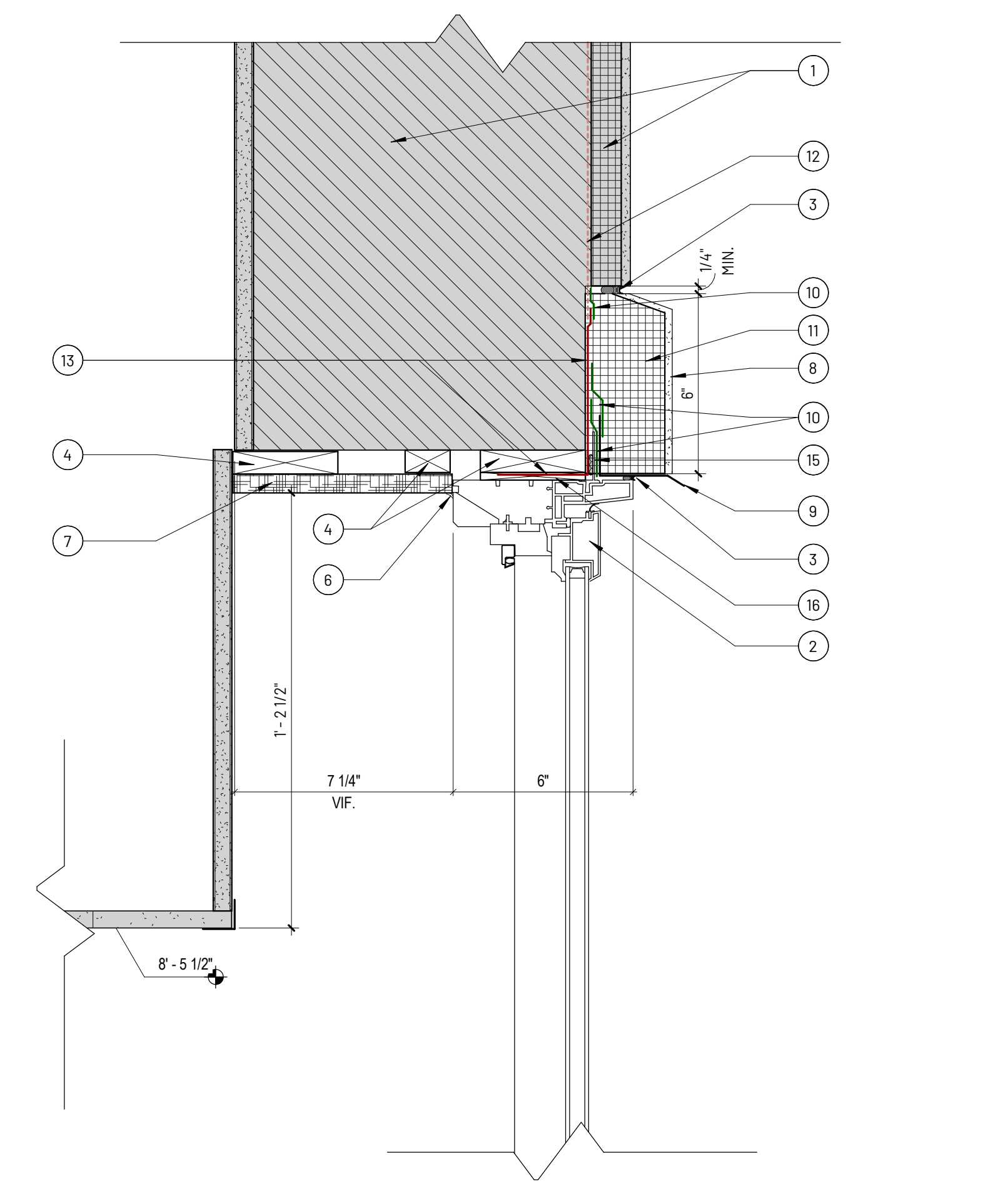
**WINDOW C** VINYL  
**FIRE RATED WINDOW C.1** STEEL  
**WINDOW D** VINYL  
**FIRE RATED WINDOW D.1** STEEL  
**FIRE RATED WINDOW E** STEEL



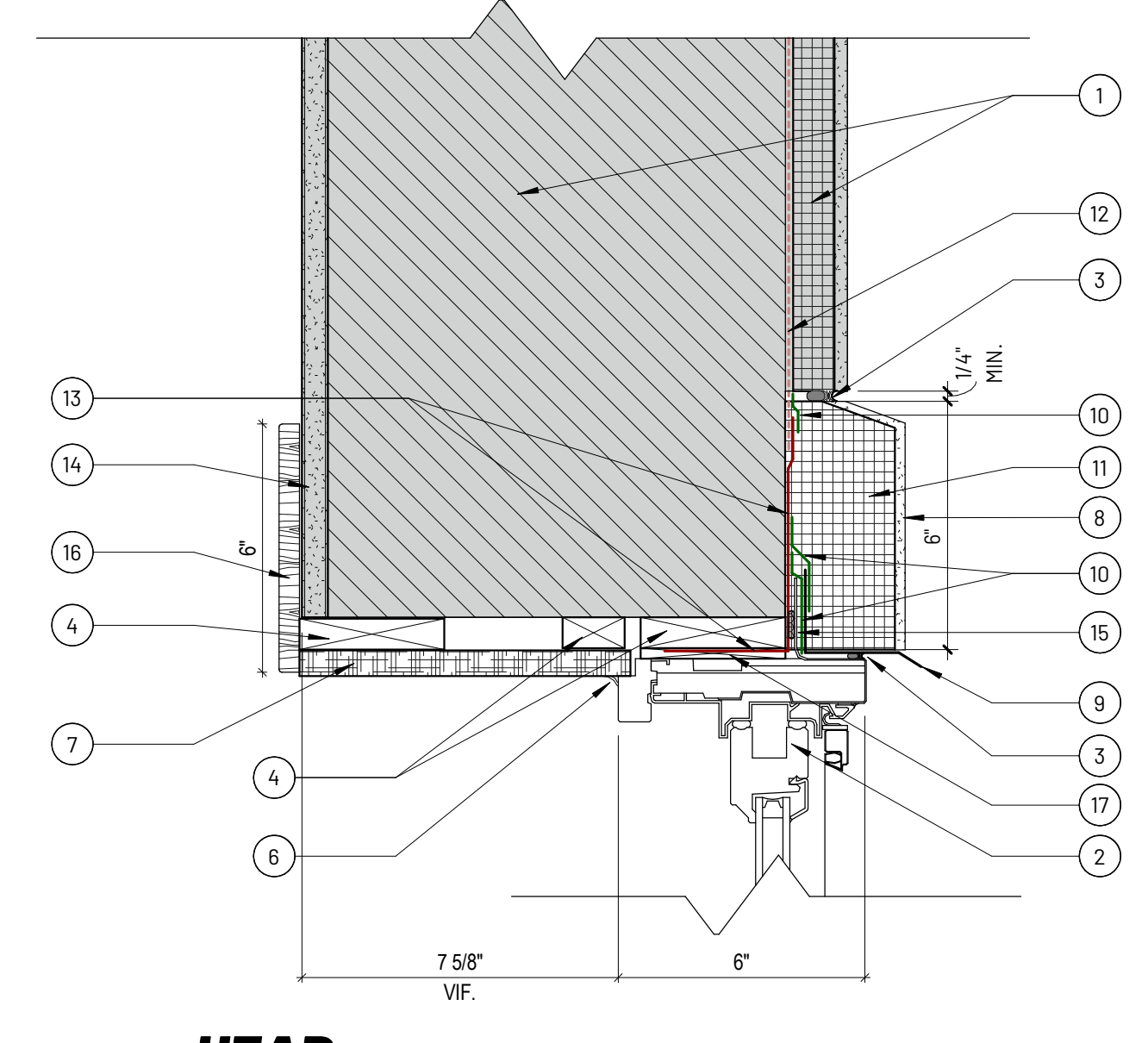
**WINDOW F** VINYL  
**FIRE RATED WINDOW G** STEEL  
**WINDOW H** ALUM.  
**WINDOW I** ALUM.  
**EGRES-FIRE RATED WINDOW J** STEEL



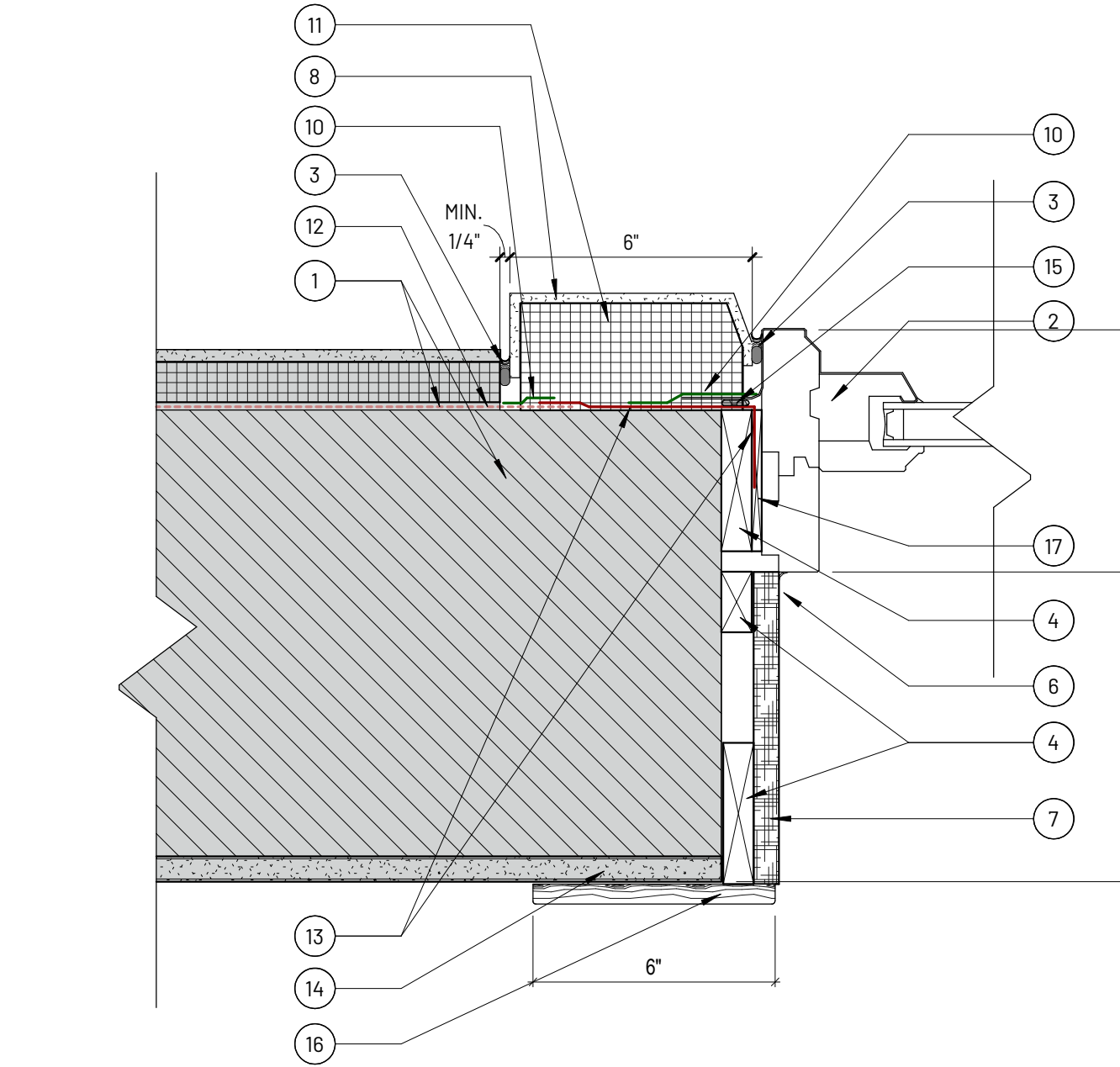
**WINDOW K** ALUM.  
**WINDOW L** VINYL



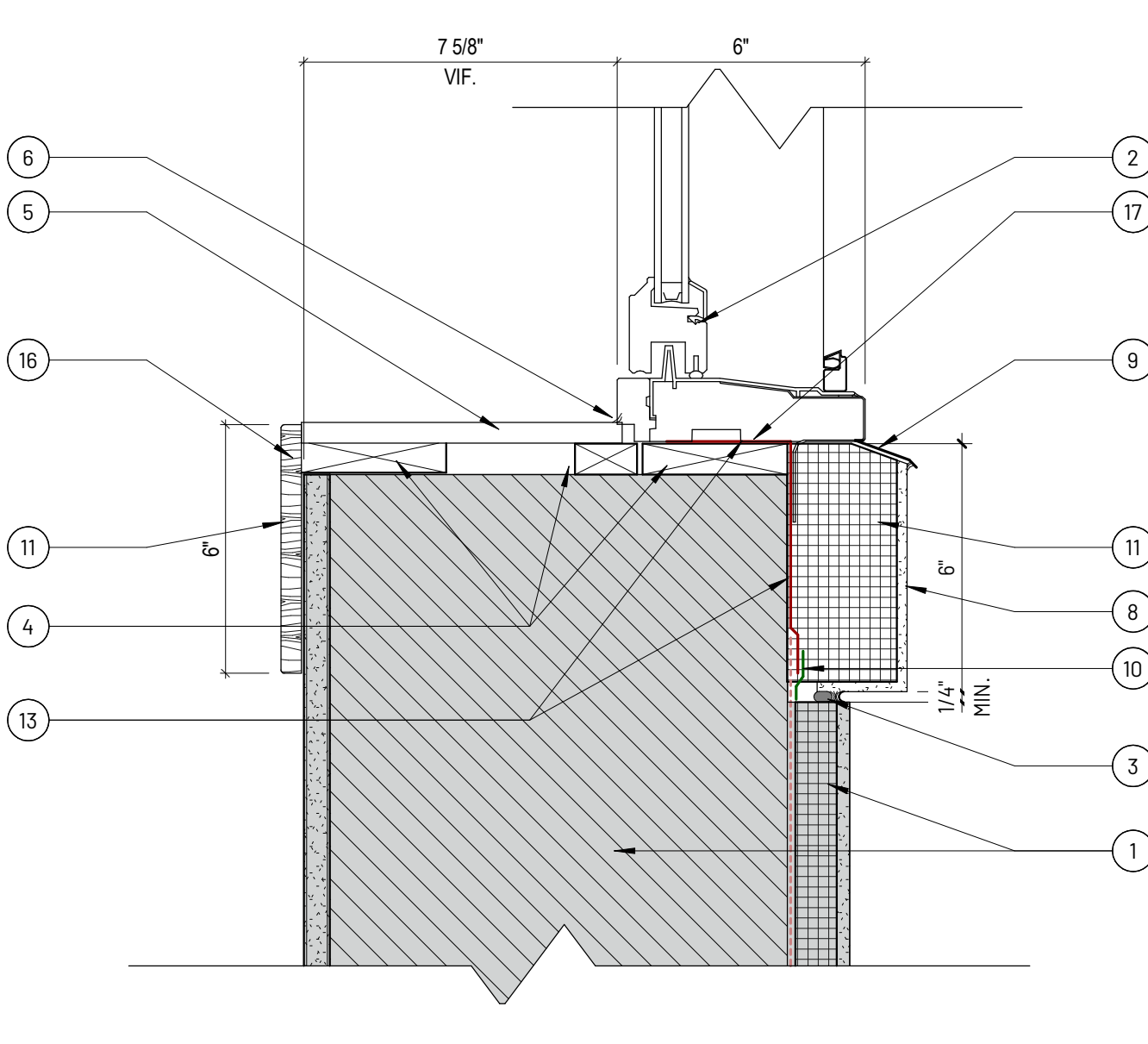
**A.1 HEAD**  
 3" = 1'-0"



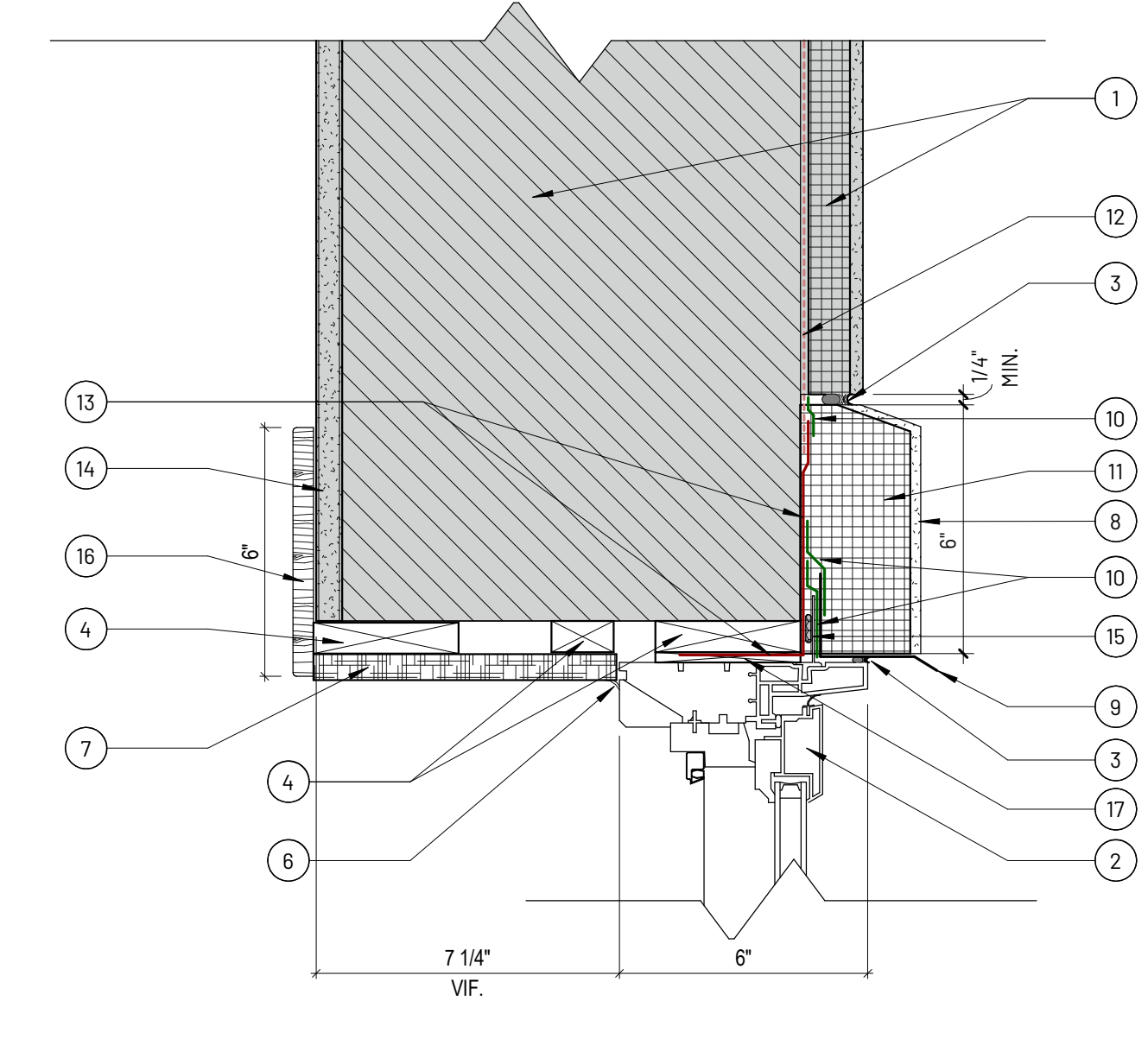
**2 HEAD**  
 3" = 1'-0"



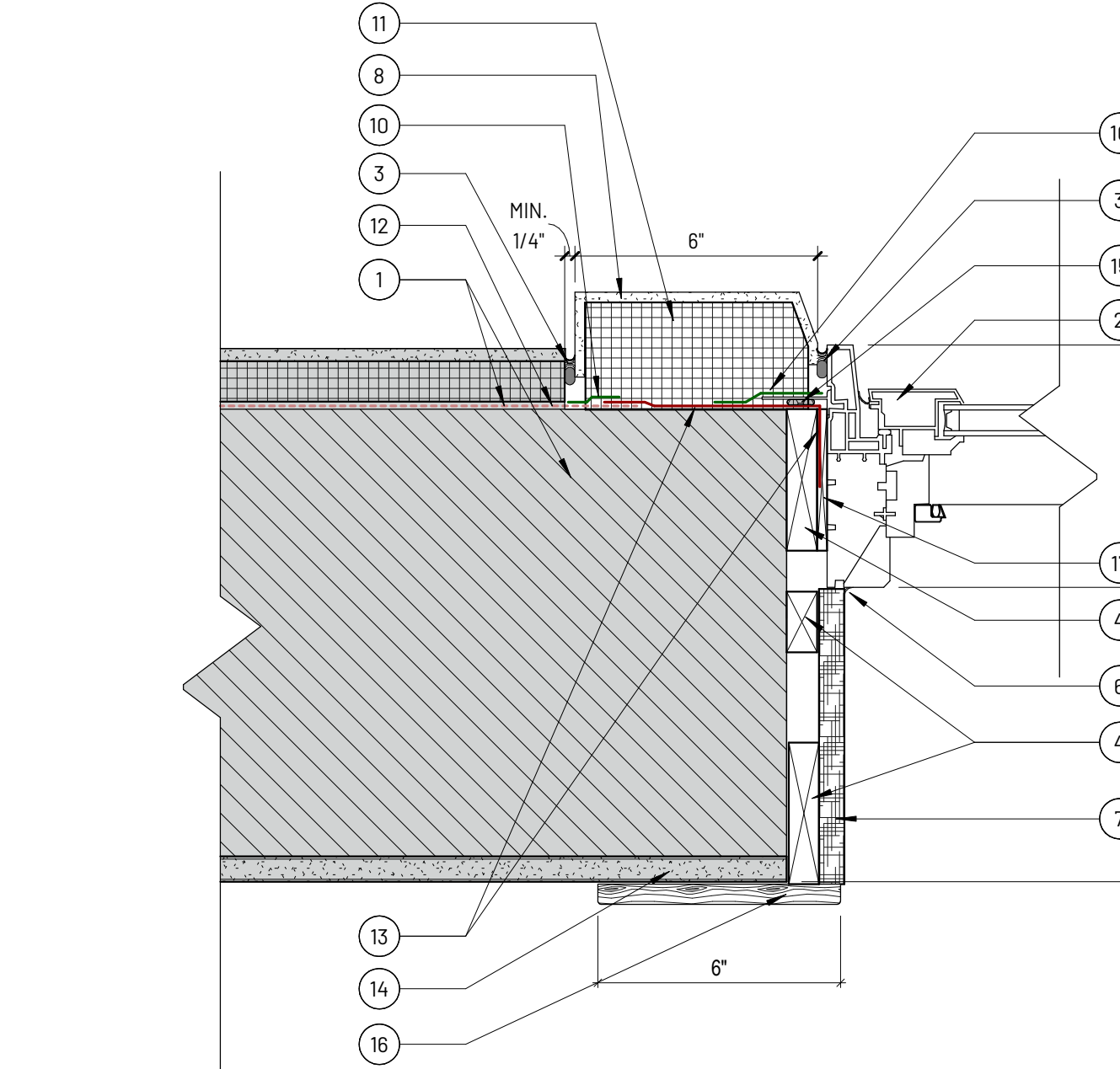
**3 JAMB**  
 3" = 1'-0"



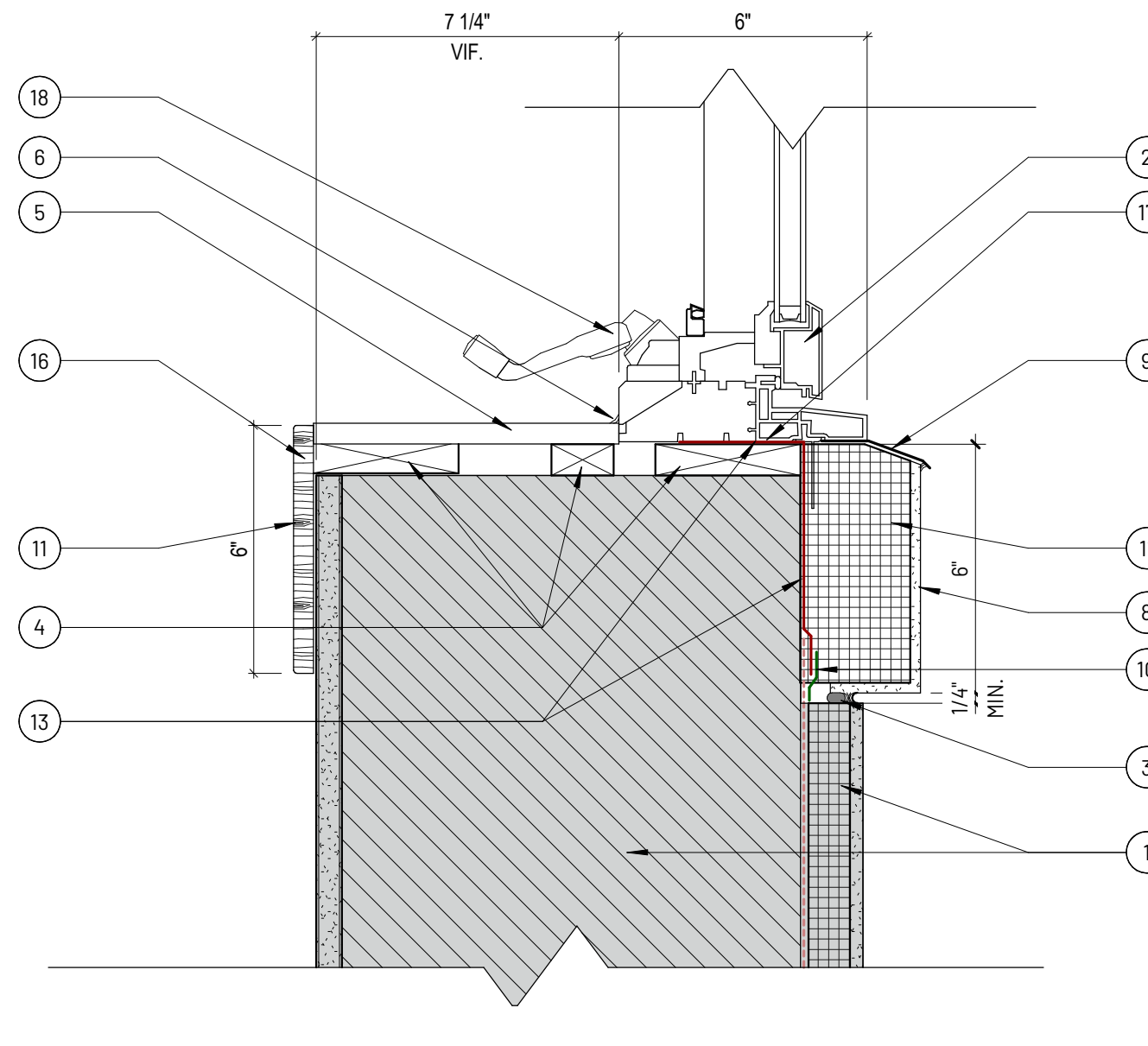
**4 Detail 3**  
 3" = 1'-0"



**5 HEAD**  
 3" = 1'-0"



**6 JAMB**  
 3" = 1'-0"



**7 SILL**  
 3" = 1'-0"

**GENERAL NOTES**

- A** ALL EXTERIOR BLOCKING TO BE MOISTURE TREATED EXTERIOR ROUGH OPENINGS, AND ANY WOOD IN CONTACT WITH CONCRETE.
- B** ENSURE ALL WEEPS, THRU WALL FLASHING AND OTHER DRAINAGE CAVITIES REMAIN OPEN TO ALLOW CONDENSATION AND MOISTURE TO ESCAPE. SEALANT SHALL BE APPLIED TO THE UNDERSIDE OF ALL FLASHING AND DRIPS.
- C** FIELD VERIFY EXISTING CONDITIONS IN CONJUNCTION WITH NEW CONSTRUCTION. NOTIFY ARCHITECT OF DISCREPANCIES.
- D** ALL EXTERIOR WALL TYPES ARE SHOWN IN GRAY FOR REFERENCE ONLY. VERIFY WALL MAKEUP AND DIMENSIONS IN FIELD.
- E** SHIM WINDOWS WITH EITHER CEDAR WOOD, TREATED WOOD, OR PLASTIC SHIMS.
- F** FOAM IN PLACE ALL VOIDS AROUND WINDOW TO PROVIDE A CONTINUOUS INSULATION BARRIER BETWEEN THE WINDOW AND THE WALL.
- G** ALL BLOCKING TO BE MECHANICALLY FASTENED AND SET IN ADHESIVE.
- H** VERIFY ALL OPENING SIZES IN FIELD. SIZES MAY VARY. WHEN SIZING WINDOWS ACCOUNT FOR BLOCKING AND SHIMMING.
- I** ALL WINDOW GRIDS WILL BE BID AS ALTERNATE 1.

**KEYNOTES**

- 1 EXISTING WALL
- 2 WINDOW AS SCHEDULED - VERIFY ALL SIZES IN FIELD.
- 3 BACKER ROD AND SEALANT
- 4 BLOCKING AS REQUIRED - TREATED
- 5 SOLID SURFACE SILL
- 6 SEALANT
- 7 COMPOSITE EXTENSION JAMB - VERIFY WALL DEPTH IN FIELD
- 8 EIFS SYSTEM
- 9 PREFINISHED ALUMINUM FLASHING - COLOR TO MATCH WINDOW FRAME
- 10 FLASHING TAPE
- 11 INSULATION 6" X 3"
- 12 EXISTING WEATHER BARRIER
- 13 WEATHER BARRIER - TO WRAP INTO OPENING
- 14 PLASTER FINISH - PATCH BACK AS NEEDED
- 15 WINDOW NAILING FLANGE - SET IN SEALANT AND MECHANICALLY FASTENED
- 16 COMPOSITE WINDOW TRIM
- 17 SHIM AS REQUIRED
- 18 WINDOW HARDWARE
- 19 ALUMINUM BREAK METAL WRAP - COLOR TO MATCH WINDOW FRAME
- 20 MULLED WINDOW JOINT
- 21 MAXIMIZE LOWER WINDOW SIZE - REMOVE UPPER WINDOW IF POSSIBLE.

**LEGEND**

- IP - INSULATED PANEL - PROVIDE TWO PANELS PER WINDOW
- RF - INSULATED FIRE RATED GLAZING
- IG - INSULATED GLAZING

**REVISIONS**

NO.	DESCRIPTION	DATE
1	ADDENDUM #1	05/18/2026

IF THIS DRAWING IS NOT 30"x42" IT IS NOT TO SCALE

©2018/2021. Permission to reproduce all or part of this drawing is hereby granted solely for the limited purpose of reconstruction of this project or windows. Unauthorized copying, disclosure or construction use without written permission of Cannon Ross Briggs & Associates is prohibited by copyright law.

FILED IN: I:\Projects\2025\25000 DAS DOC NCCF Education Building Window Replacement\25000 DAS DOC NCCF Window Replacement\05/18/2026