

August 15, 2025

26CRDPBCLULL-0005 Questions & Answers

Question: Will we be responsible for supplying the seedlings as well or will the DNR be providing them?

Answer: The Iowa DNR will supply the seedlings. The selected contractor will be responsible for picking them up from the State Forest Nursery, located at 2404 S. Duff Ave., Ames, IA 50010.

Question: Is there a map available detailing the location of stands 155-164?

Answer: Yes, please see pages 3, 5-9.

Question: Is there any requirement to apply herbicide or install tree tubes as part of the tree planting?

Answer: For new tree plantings, if the current cover is alfalfa, glyphosate and 2,4-D should be applied prior to planting. For all cover types, apply pre-emergent herbicides—Princep and Pendulum at 3 quarts per acre each—over the rows after planting. Tree tubes will not be required for these plantings. For underplantings, no herbicide application or tree tubes will be necessary.

Question: Is there a list of species and seedling sizes?

Answer: Yes, please see pages 4-9.

FOREST STEWARDSHIP PROJECT PLAN

Prepared by Maison Hubrig, District Forester

400 Commercial St., Charles City, IA 50616

563-608-0086

Date: 7/11/2025

Landowner:

State of Iowa DNR

Park Manager – Austin Lette

District Forester – Maison

Volga River State Recreation

10225 Ivy Rd.

Hubrig

Area

Fayette, IA 52147

Telephone: 563-608-0086

Location: Westfield Twsp. Fayette County, Iowa.

Total Acres: ~56 Acres

Landowner Objectives:

- Plant bare root hardwood, shrub, and conifer seedlings to establish new forest stands to improve habitat, recreation, aesthetics, and for future timber production.

Property Description

The 56 acres addressed in this plan are outlined in yellow on the maps provided. This area has rolling topography with some steep ridges.

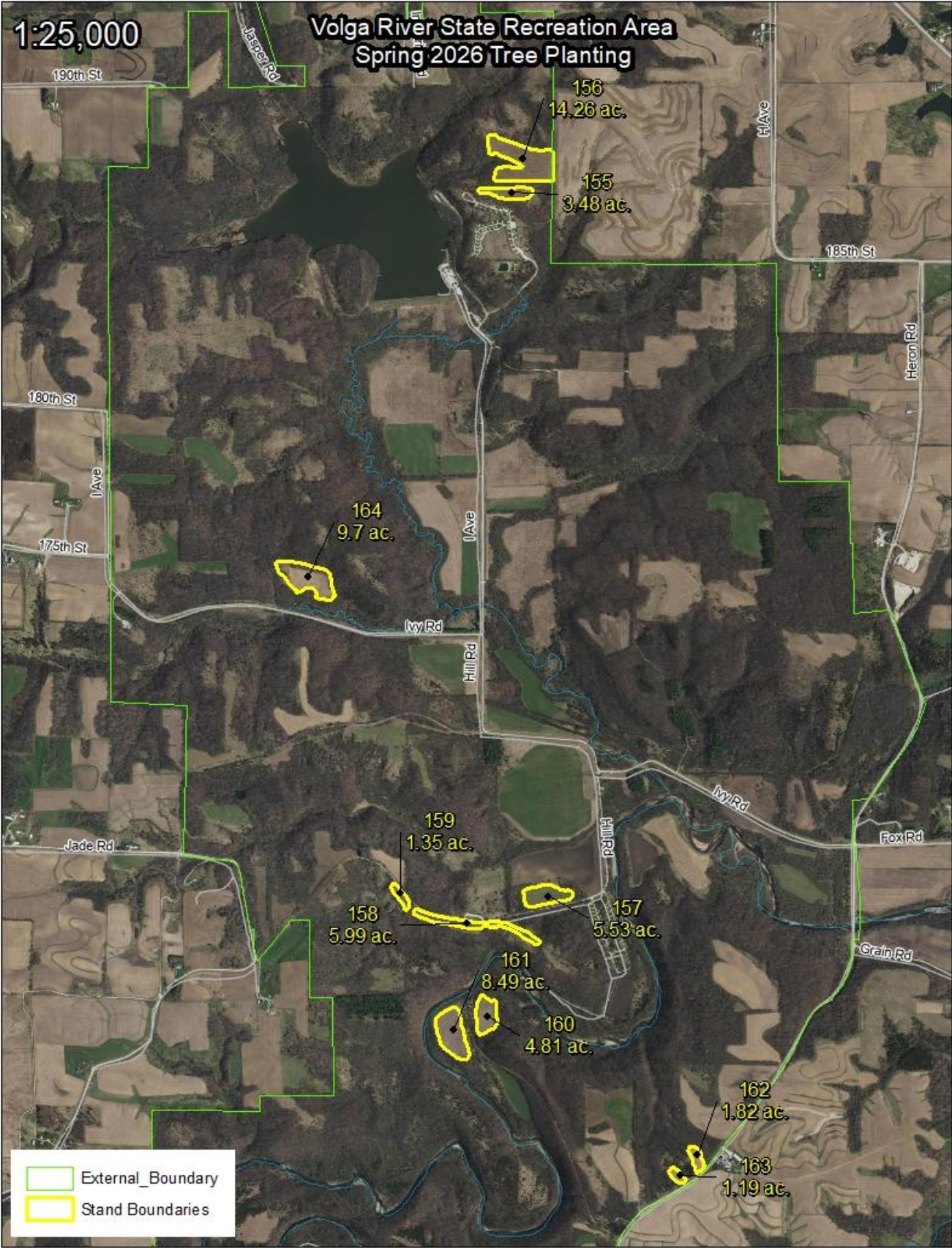
➤ **Soils**

The primary soils on this property are Fayette silt loams. These are moderately deep to deep, and well drained soils that are highly productive and suited for growing upland hardwoods. The native vegetation on these sites was oak / hickory woodland.

➤ **History**

These areas have been in State ownership for several decades, and are open to public hunting, horse riding and other forms of recreation. The areas addressed in this plan are currently used for row crops or hay.

Volga River State Recreation Area - Spring 2026 New Tree Plantings



Tree Planting – 56 Acres

1. Site Preparation:

- Corn: Plant seedlings directly into the chopped stalks in the spring. Apply pre-emergent herbicide (Princep & Pendulum) directly over the seedling rows for early weed control. If the site gets weedy before tree planting, spray glyphosate in strips before planting.
- Beans: Plant seedlings directly into bean stubble. Apply pre-emergent herbicide (Princep & Pendulum) directly over the seedling rows for early weed control.
- Alfalfa: Mow the area in late summer, and allow it to grow up with 6" of new growth. Before planting, spray the entire area to be planted with glyphosate and 2,4D. Apply pre-emergent herbicide (Princep & Pendulum) directly over the seedling rows for early weed control.
- Clover: plant directly into the clover. Spray pre-emergent herbicide (Princep & Pendulum) directly over the seedling rows after planting.

2. Tree Planting:

All of the trees should be planted on a 6 by 10-foot spacing (6 feet between seedlings and 10 feet between rows), with the exception of stands 158, 162, and 163 which will be planted on a 4x10 spacing. Leave a 20-foot buffer around the entire tree planting. Species should be mixed throughout the planting areas, with a relatively uniform distribution of species throughout the stand.

The trees must be planted within one week of their arrival and no later than May 15th. If the trees cannot be planted within one week of their arrival, they should be kept in cold storage at 35 to 38 degrees Fahrenheit. All trees must be planted at the same depth as they were grown in the nursery with all root collars below ground line.

After the seedlings are planted, apply pre-emergent herbicide (Princep & Pendulum) directly over the seedling rows for early weed control.

The following list details the total number and species of seedlings

Needed:

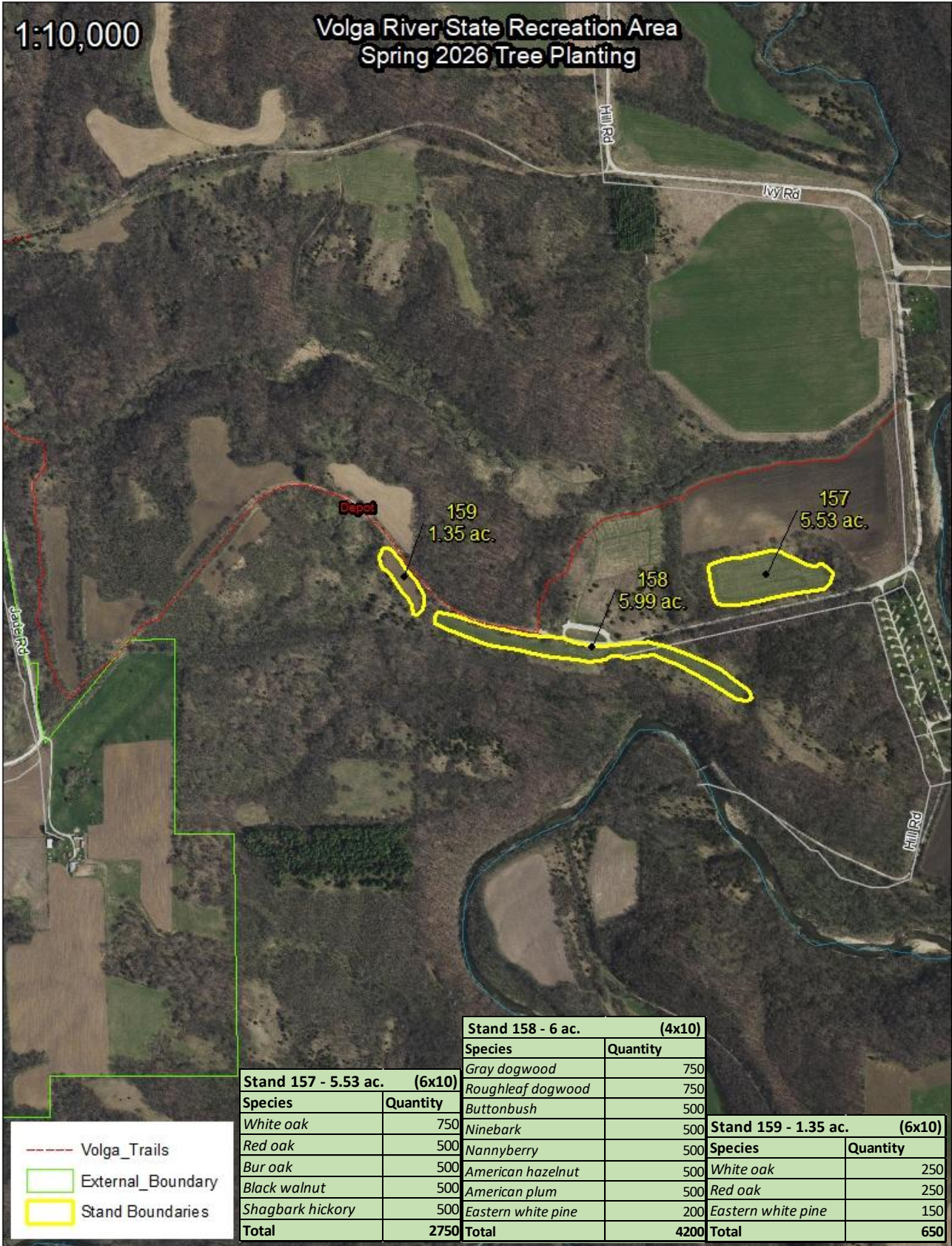


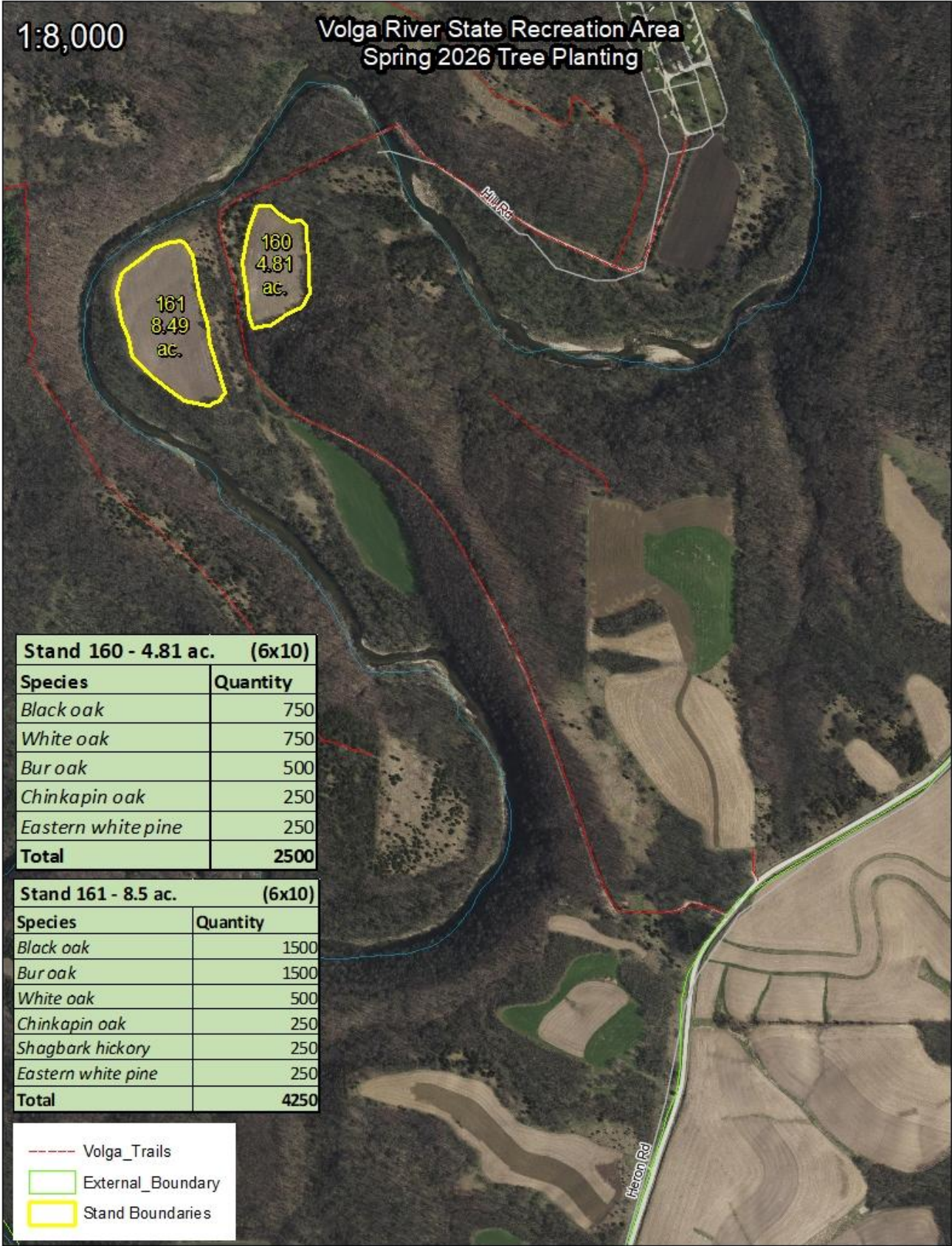
The subsequent maps, with attached tables outline the locations, species, quantities, and spacing for each stand:

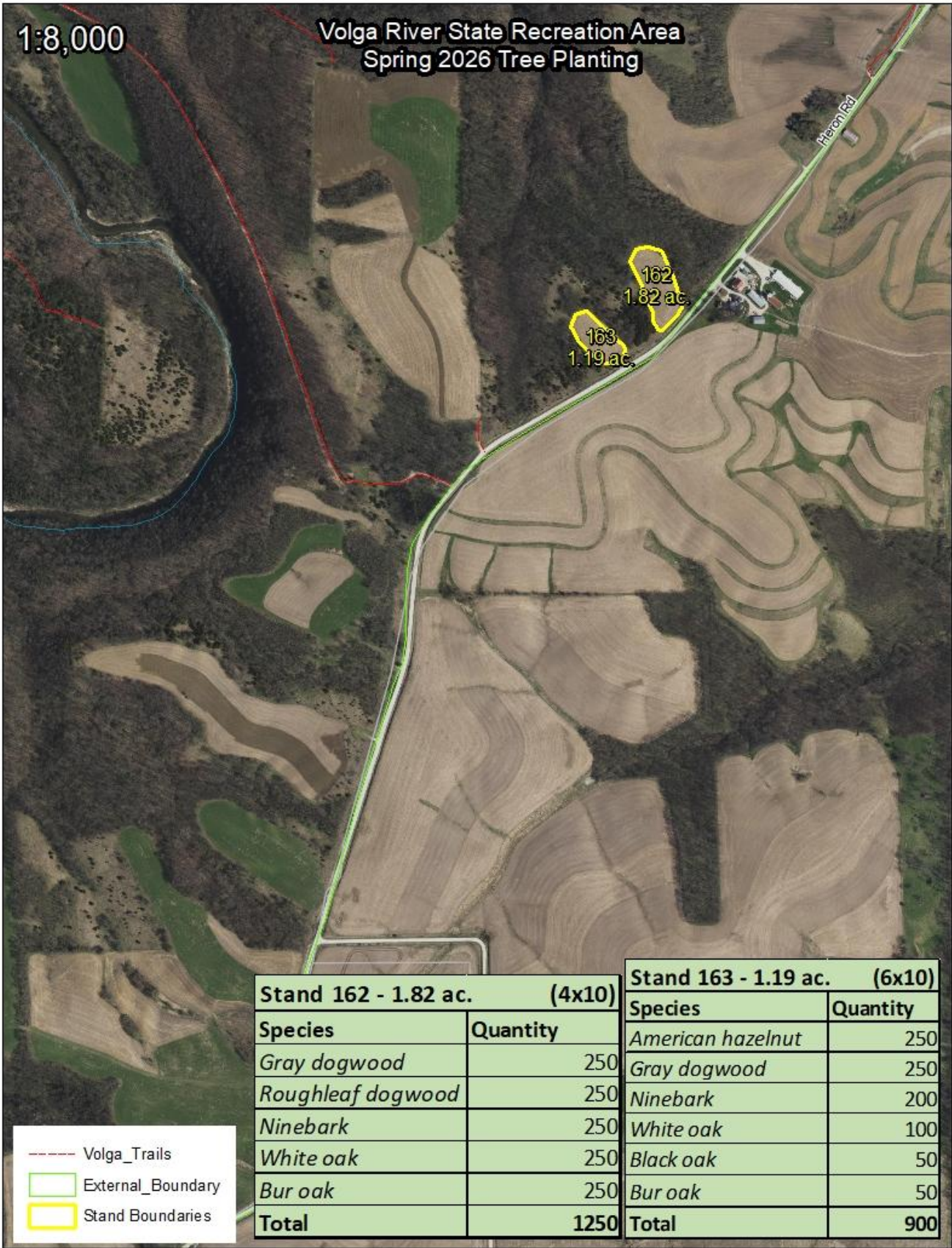
Species	Quantity
White oak	6850
Red oak	4750
Black oak	3300
Bur oak	5050
Black Walnut	1250
Shagbark hickory	1500
Chinkapin oak	500
Eastern white pine	850
Gray dogwood	1750
Roughleaf dogwood	1000
Buttonbush	500
Ninebark	950
Nannyberry	500
American hazelnut	750
American plum	500
Total	30000



Volga River State Recreation Area - Spring 2026 New Tree Plantings







Volga River State Recreation Area - Spring 2026 New Tree Plantings

