

IOWA ARMY NATIONAL GUARD CAMP DODGE: CAMP DODGE A-1 PENTHOUSE REPAIRS

7105 NW 70th AVE, JOHNSTON, IA 50131

PROJECT NO. 19083788
CONTRACT NO. 322A1008

INVISION NO. 24115

BID SET
20 MAR 2024



OWNER
IOWA ARMY NATIONAL GUARD CAMP DODGE:
7105 NW 70TH AVE
JOHNSTON, IA

ROOF ASSESSMENT
GARLAND/DBS INC.
3800 E 91ST STREET
CLEVELAND, OH 44105
BRETT TURNER
(515) 205-8340
bturner@garlandco.com

INVISION
PLANNING | ARCHITECTURE | INTERIORS

900 Mulberry Street
Des Moines, Iowa 50309
515.633.2941

**CAMP DODGE A-1
PENTHOUSE REPAIRS**

PROJECT NO. 19083788
CONTRACT NO. 322A0108
INVISION PROJECT NO. 24115

ISSUE DATE: 20 MAR 2024
BID SET
MANAGING ARCHITECT:
JASON DEVRIES
jasond@invisionarch.com
rolandg@invisionarch.com

SHEET NAME:
COVER SHEET

SHEET:
G0.00



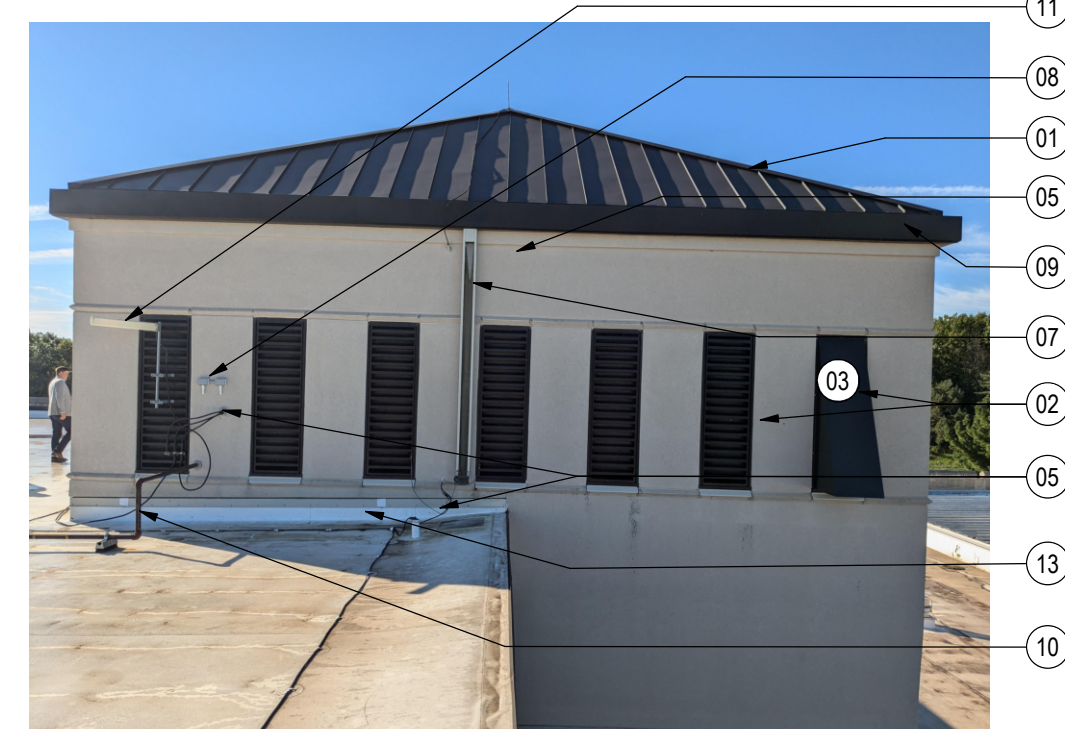
4 TOWER 4 NORTH - EXISTING CONDITIONS - ALTERNATE #01
12" = 1'-0"



3 TOWER 3 NORTH - EXISTING CONDITIONS - ALTERNATE #01
12" = 1'-0"



2 TOWER 2 SOUTH EXISTING CONDITIONS
12" = 1'-0"



1 TOWER 1 SOUTH EXISTING CONDITIONS
12" = 1'-0"

NOTE LEGEND	
MARK	COMMENT
01	PROTECT ROOF, TYP
02	REMOVE ALL LOUVERS AND DUMMY LOUVERS ON ALL SIDES. SALVAGE, TYP.
03	ACTUAL ACTIVE THRU-WALL LOUVER LOCATIONS - SITE VERIFY
04	REMOVE AND INSTALL NEW VENT PIPES DURING CLADDING REPLACEMENT, SEAL AND INSULATE AROUND PENETRATION
05	REMOVE AND RECONNECT ALL WIRING DURING CLADDING REPLACEMENT
06	ALL ANTENNA WIRING CONNECTIONS MUST BE MAINTAINED DURING CONSTRUCTION. ANY SERVICE INTERRUPTION MUST BE AVOIDED EXCEPT FOR MOMENTARY DISCONNECTIONS TIGHTLY COORDINATED AND SCHEDULED WITH OWNER. PROVIDE NEW SLEEVES AND FLANGES. REFER TO DETAIL.
06	REMOVE AND RECONNECT ALL WIRING DURING CLADDING REPLACEMENT
07	REMOVE AND REPLACE DOWNSPOUTS WITH NEW, TYP
08	REMOVE AND REINSTALL DEVICES AFTER CLADDING REPLACEMENT
09	REMOVE GLUTTERS, SALVAGE FOR REUSE, REPLACE ALL DAMAGED SECTIONS WITH NEW
10	PROTECT PIPE, INSULATE AND SEAL PENETRATION IN NEW CLADDING. PROVIDE ESCUTCHEONS MATCHING FACADE
11	REMOVE AND REINSTALL, VERIFY EXACT DEVICE LOCATION WITH OWNER
12	REMOVE AND PROVIDE NEW HOSE BIBS
13	SEE DETAILS FOR FLASHING REPLACEMENT

NOTE:
THE WEST (PLAN NORTH) ELEVATIONS OF THE TOWERS ARE NOT SHOWN IN PHOTOS. SEE SHEET A1.00 FOR SCOPE OF WORK

CONSULTANT:

REVISIONS:
Description Date No.

OWNER SIGN-OFF:
DATE NAME

IOWA ARMY NATIONAL GUARD CAMP DODGE
**CAMP DODGE A-1 PENTHOUSE
REPAIRS**
7105 NW 70th AVE, JOHNSTON, IA 50131

PROJECT NO:
19083788
CONTRACT NO:
322A1008
INVISION PROJECT NO:
24115
DATE:
20 MAR 2024

SHEET SET:
BID SET

SHEET NAME:
EXISTING ELEVATION
NOTES

SHEET:
A2.00

CONSULTANT:

REVISIONS:
Description Date No.

OWNER SIGN-OFF:
DATE NAME

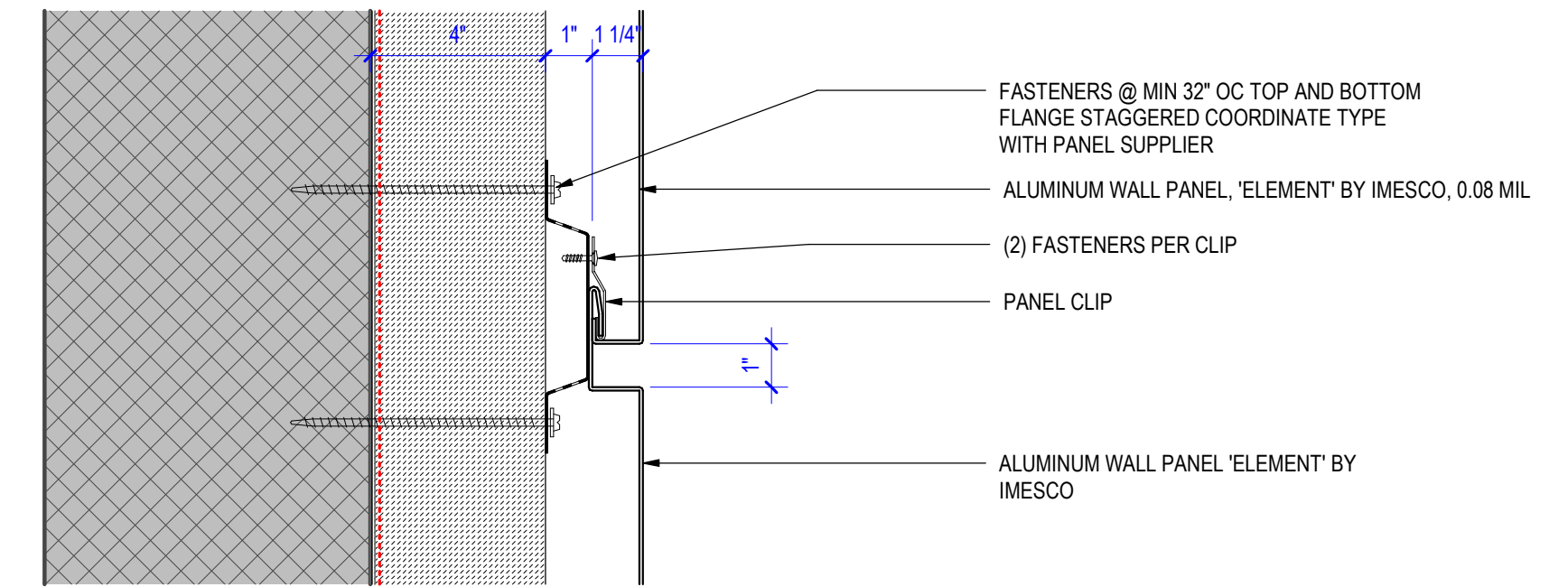
IOWA ARMY NATIONAL GUARD CAMP DODGE:
**CAMP DODGE A-1 PENTHOUSE
REPAIRS**
7105 NW 70th AVE, JOHNSTON, IA 50131

PROJECT NO:
19083788
CONTRACT NO:
322A1008
INVISION PROJECT NO:
24115
DATE:
20 MAR 2024

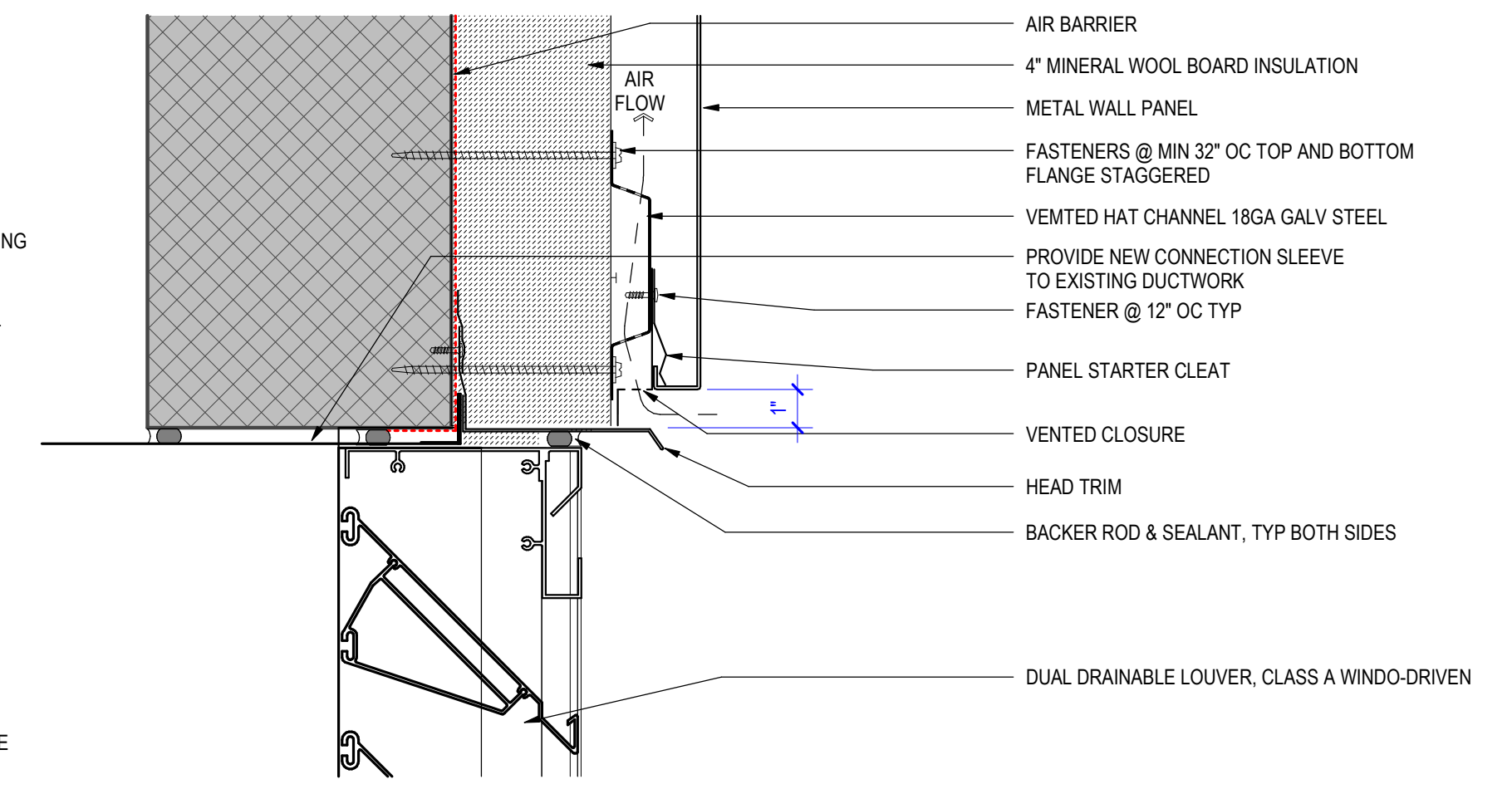
SHEET SET:
BID SET

SHEET NAME:
DETAILS

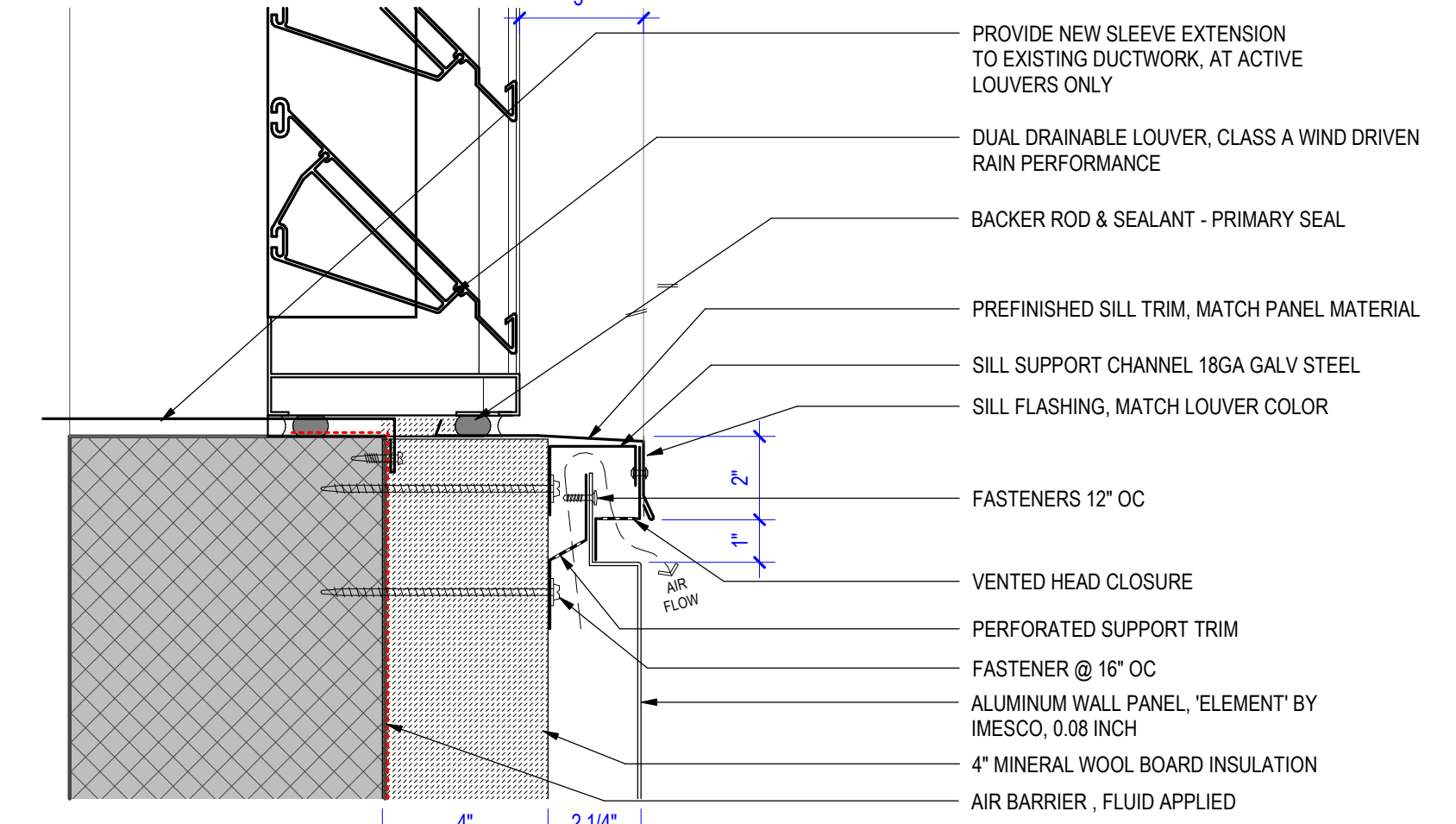
SHEET:
A3.00
Copyright © 2025



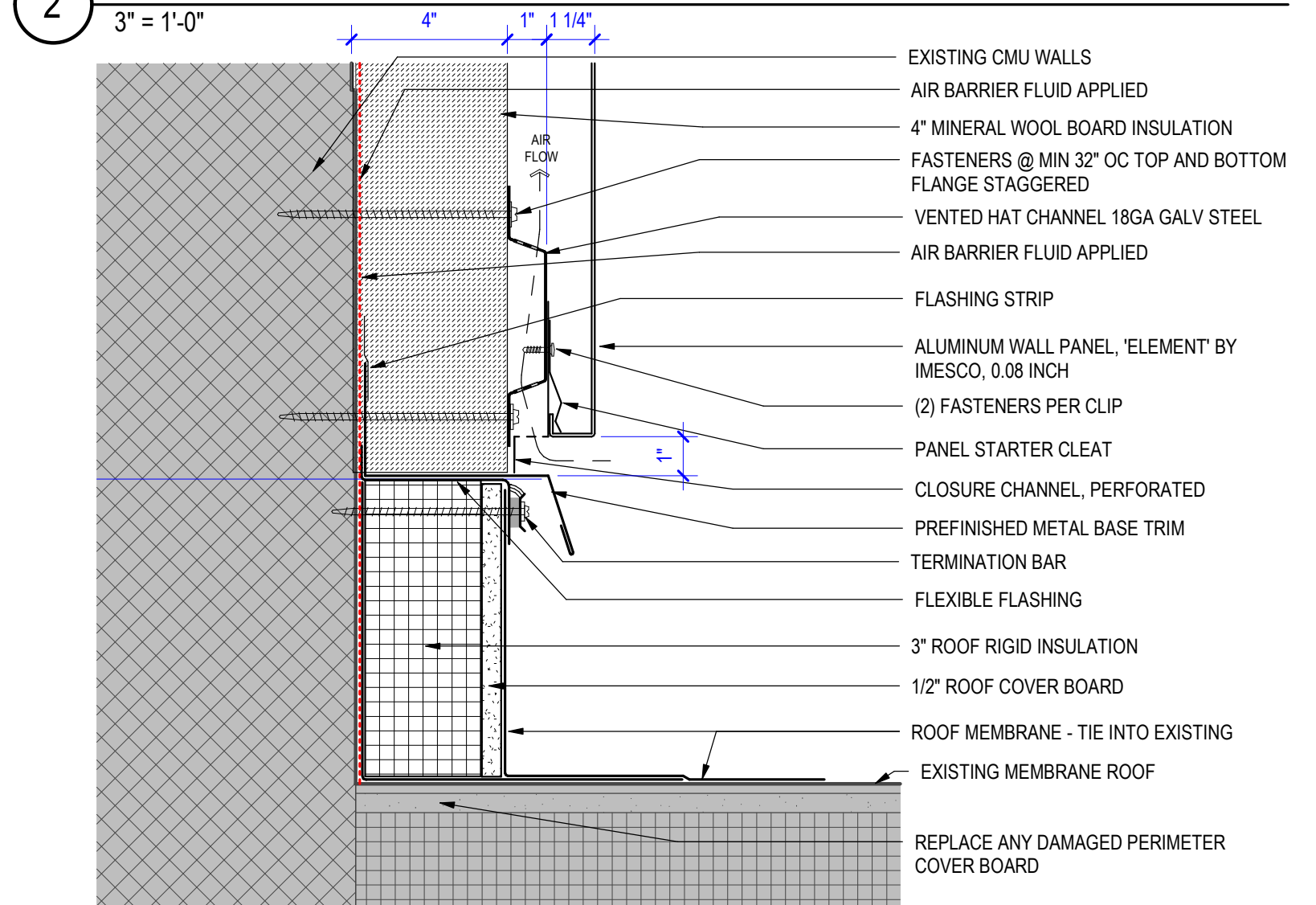
4 HORIZONTAL JOINT DETAIL
3" = 1'-0"



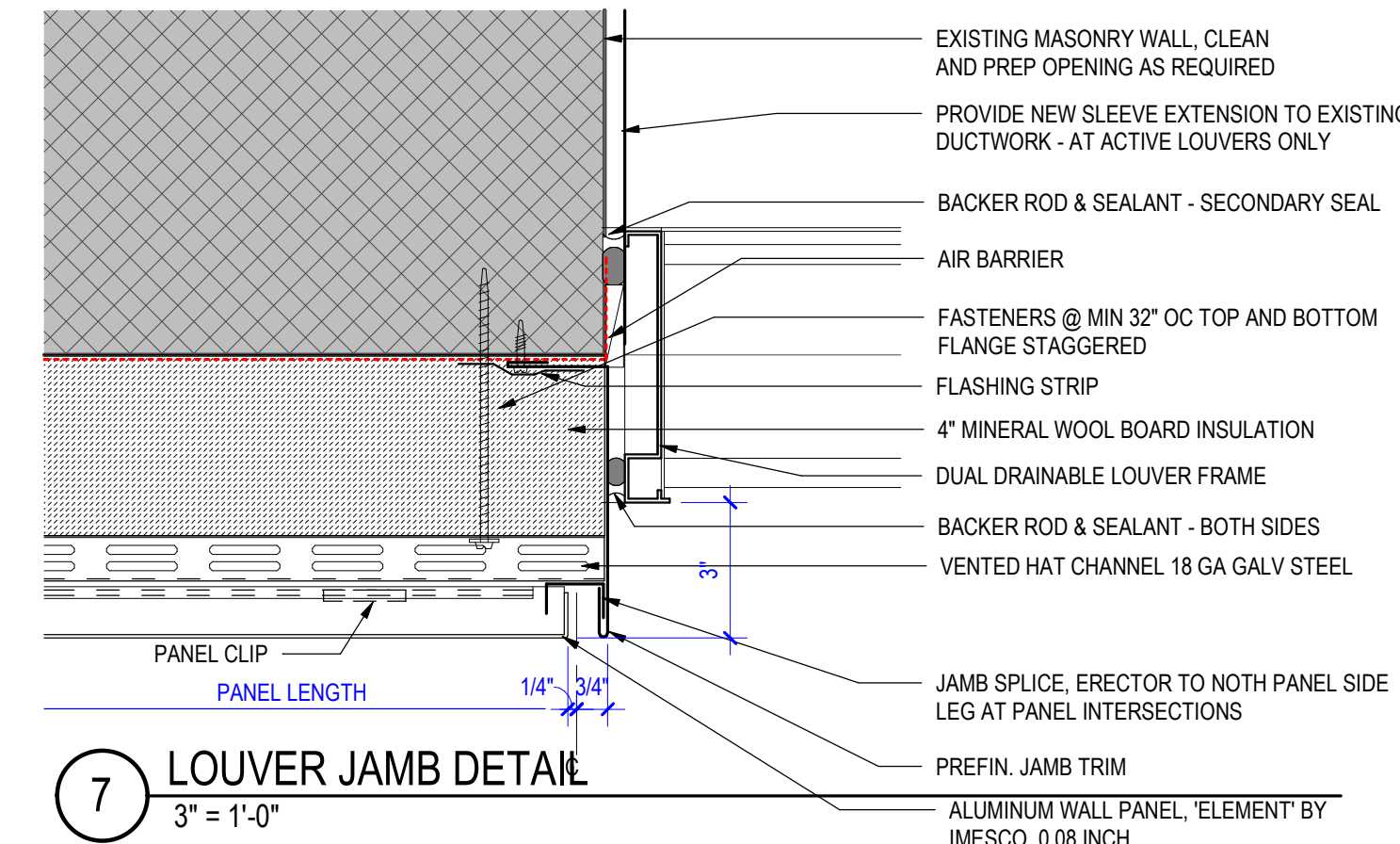
3 HEAD DETAIL
3" = 1'-0"



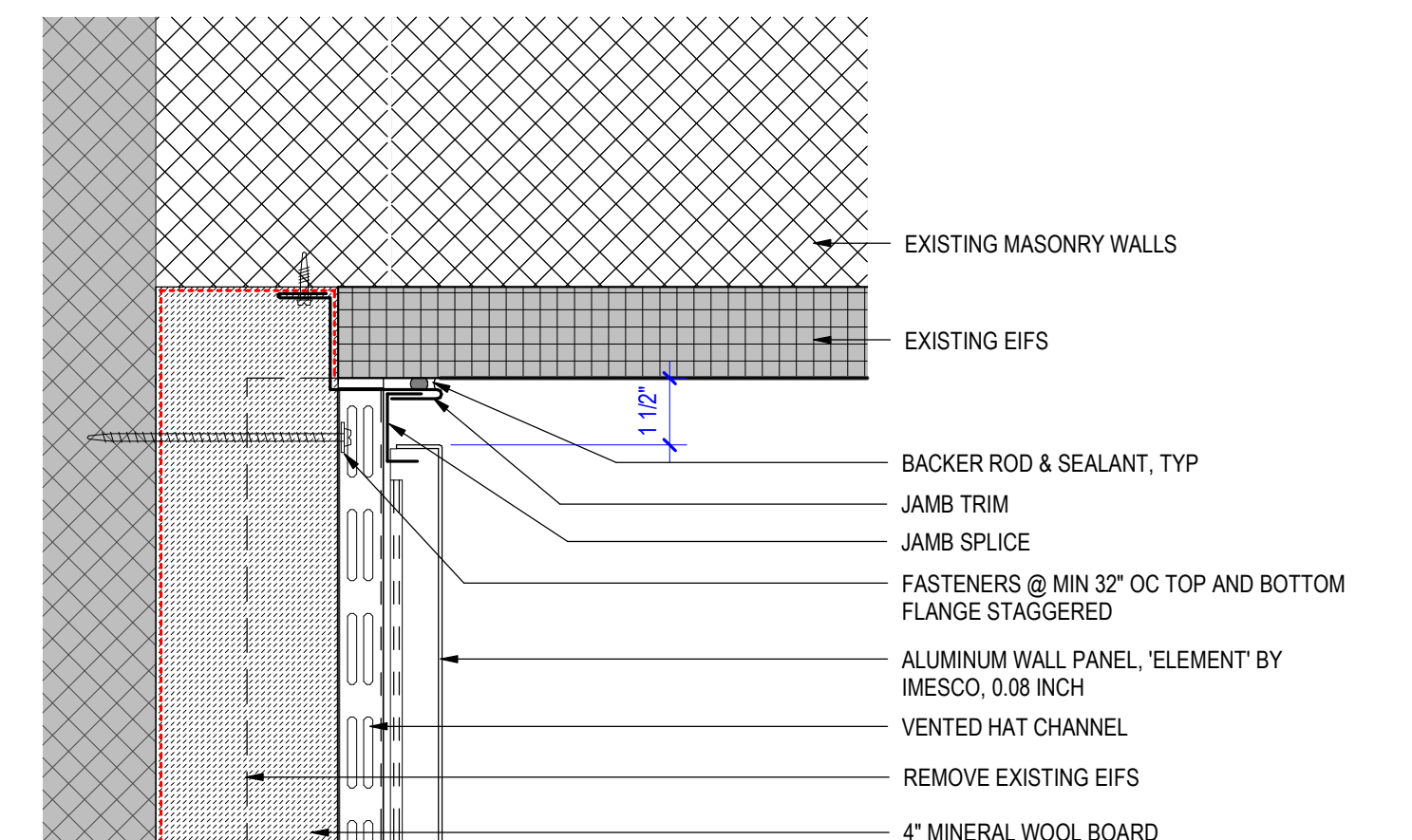
2 SILL DETAIL
3" = 1'-0"



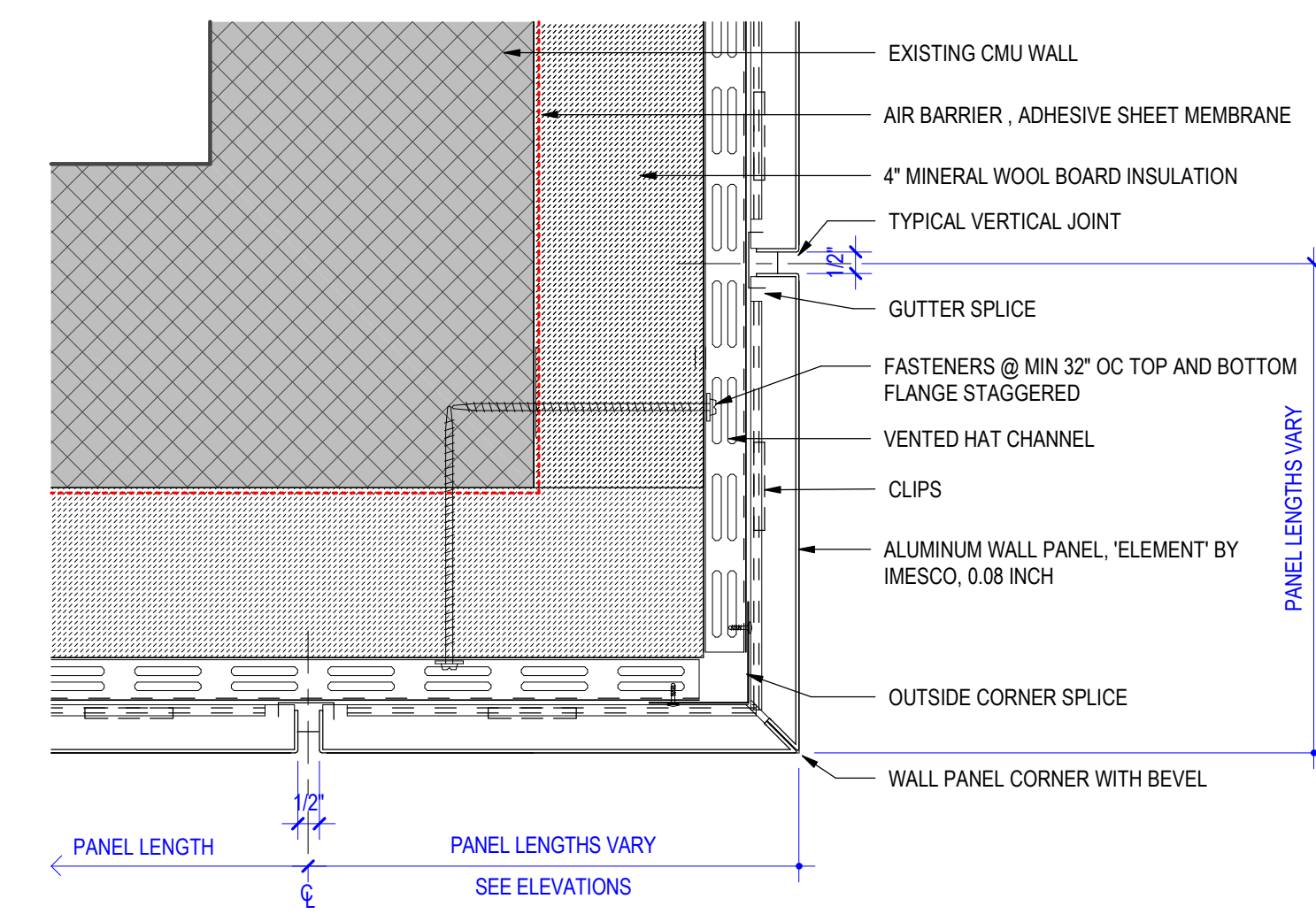
1 BASE DETAIL
3" = 1'-0"



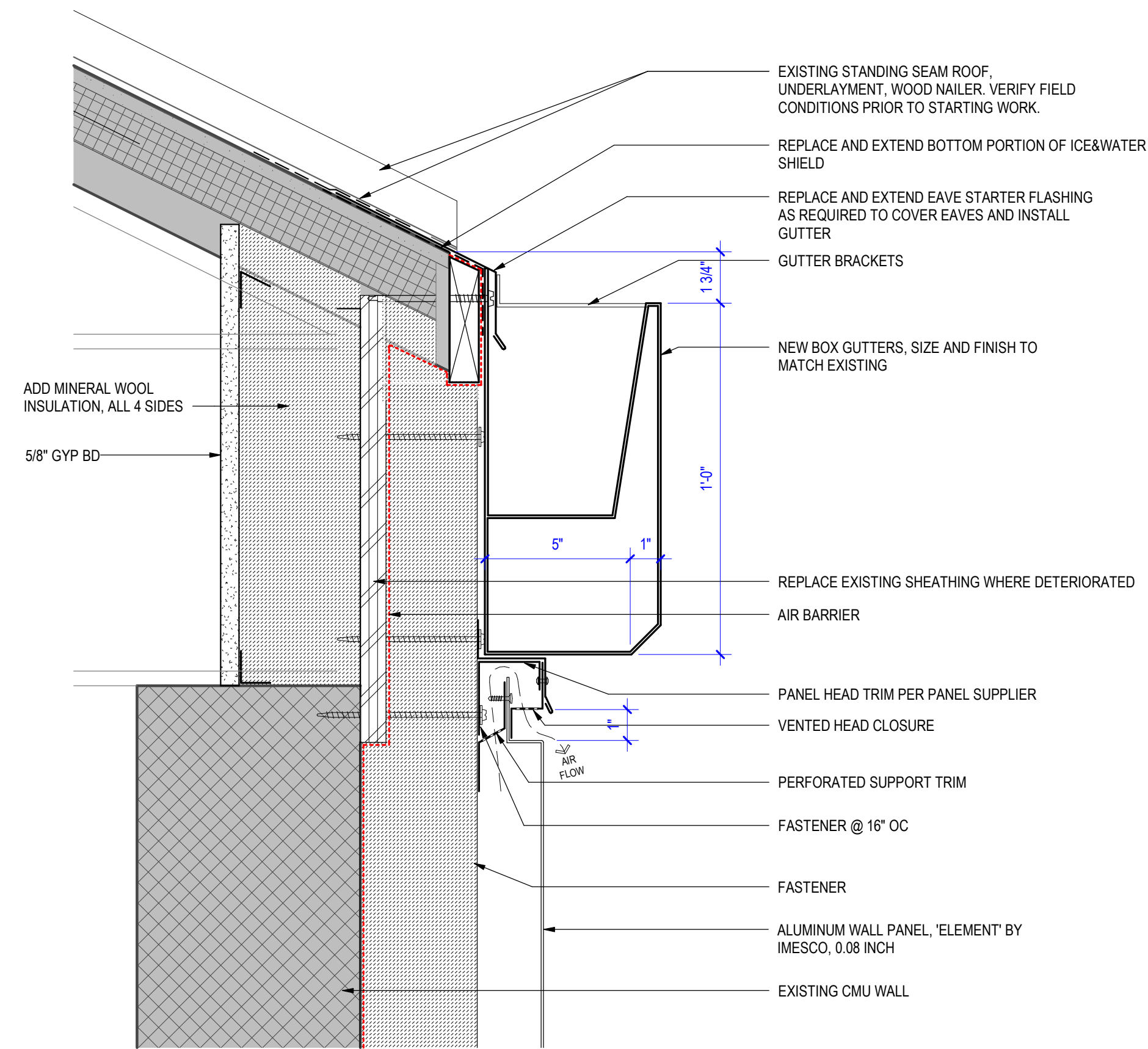
7 LOUVER JAMB DETAIL
3" = 1'-0"



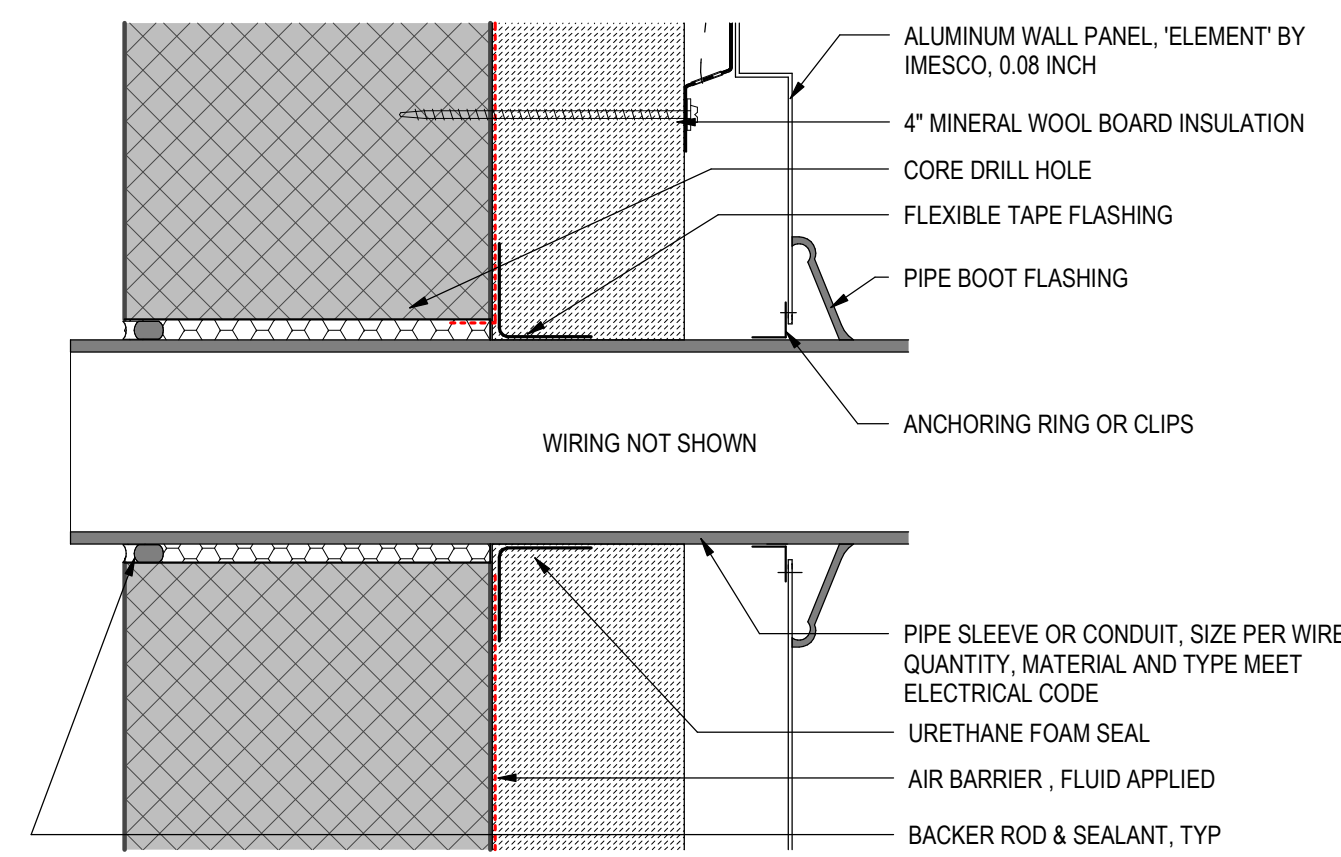
6 PLAN DETAIL AT EXISTING WALL
3" = 1'-0"



5 TYPICAL BEVEL CORNER AND VERTICAL JOINT
3" = 1'-0"



9 ROOF EDGE DETAIL
3" = 1'-0"



8 ELECTRICAL WIRING SLEEVE DETAIL
3" = 1'-0"

SHEET RESPONSIBILITY: INITIALS | 3/25/2025 8:27:33 PM | Autodesk Docs://24115_IANG_Camp_Dodge_A-1_Penthouse_Repair/24115_Comp_Dodge_A-1_Penthouse_Repair.rvt