

JOHNSTON, IA
CONTRACT # TBD
PROJECT # 19083702

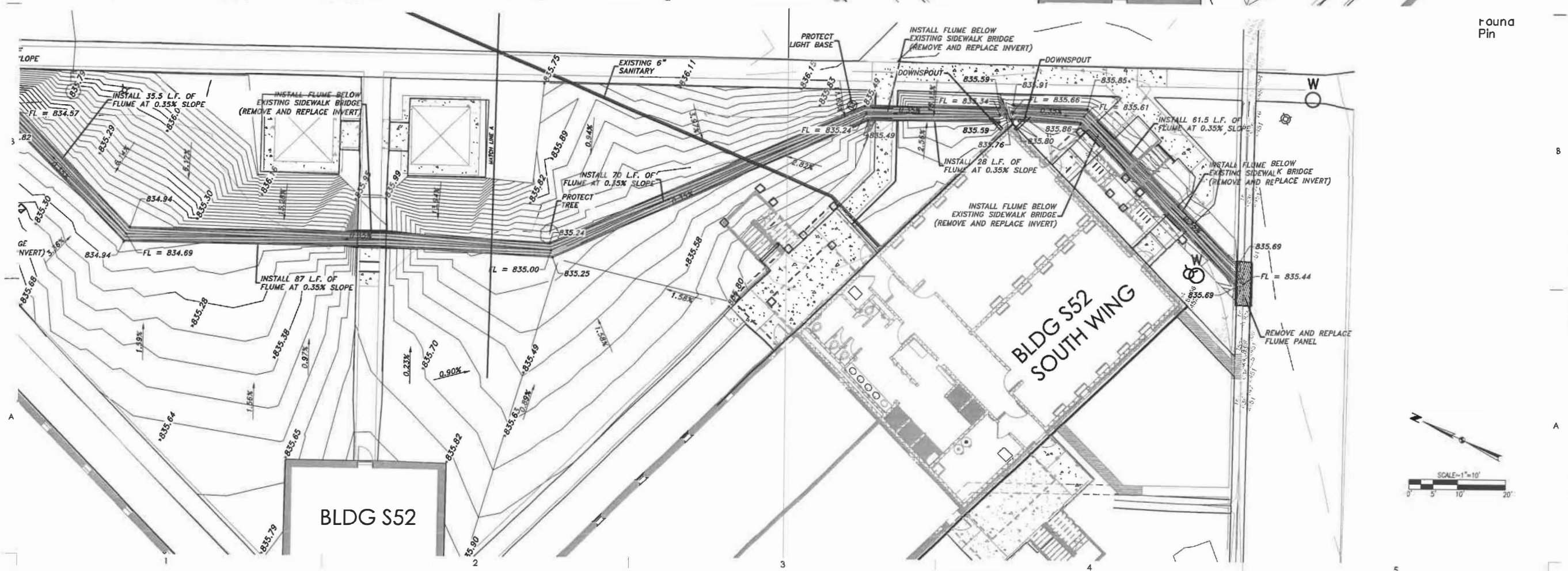
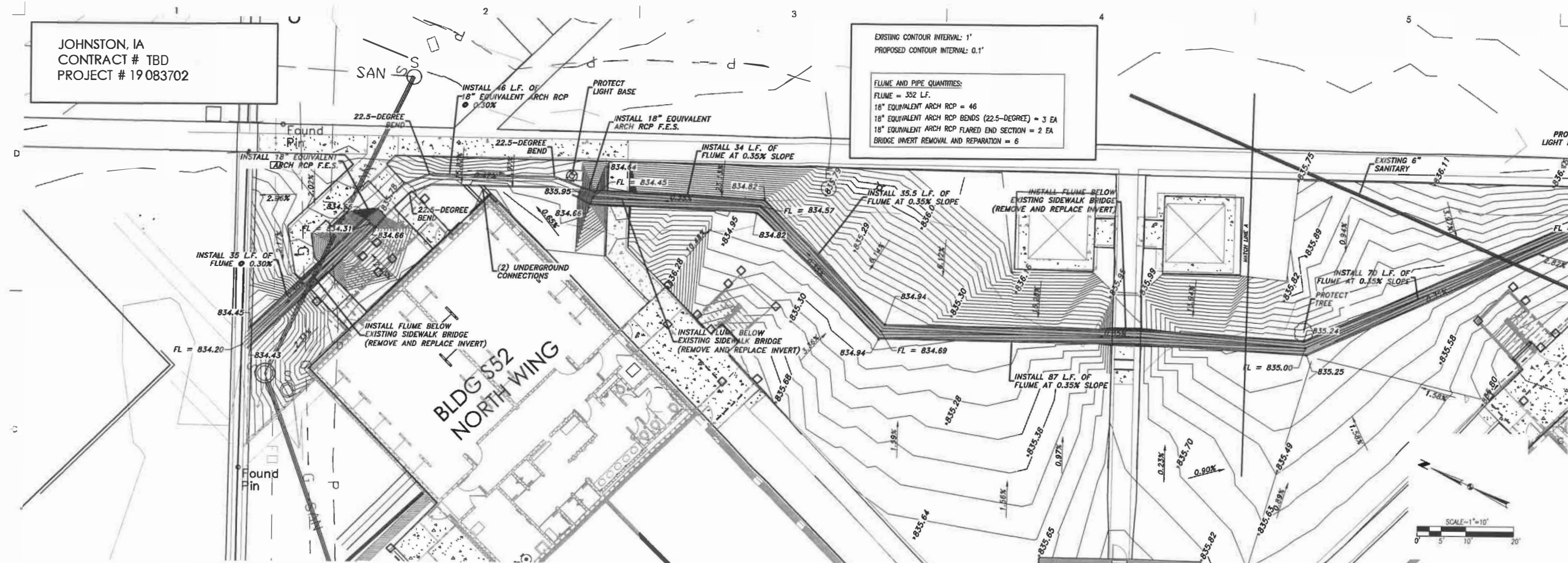
EXISTING CONTOUR INTERVAL: 1'
PROPOSED CONTOUR INTERVAL: 0.1'

FLUME AND PIPE QUANTITIES:

FLUME = 352 L.F.
18" EQUIVALENT ARCH RCP = 46
18" EQUIVALENT ARCH RCP BENDS (22.5-DEGREE) = 3 EA
18" EQUIVALENT ARCH RCP FLARED END SECTION = 2 EA
BRIDGE INVERT REMOVAL AND REPAIR = 6

ASK
STUDIO

ARCHITECTS SCHUPP KATHNER
HOLD ALL RIGHTS OF COPYRIGHT
TO THESE DRAWINGS.
REPRODUCTIONS, ALTERATIONS,
MODIFICATIONS, ISSUES OF
INCORPORATION INTO OTHER
DOCUMENTS MAY NOT OCCUR
WITHOUT THE PRIOR WRITTEN
PERMISSION OF ASK STUDIO.
COPYRIGHT 2018
A SK STUDIO

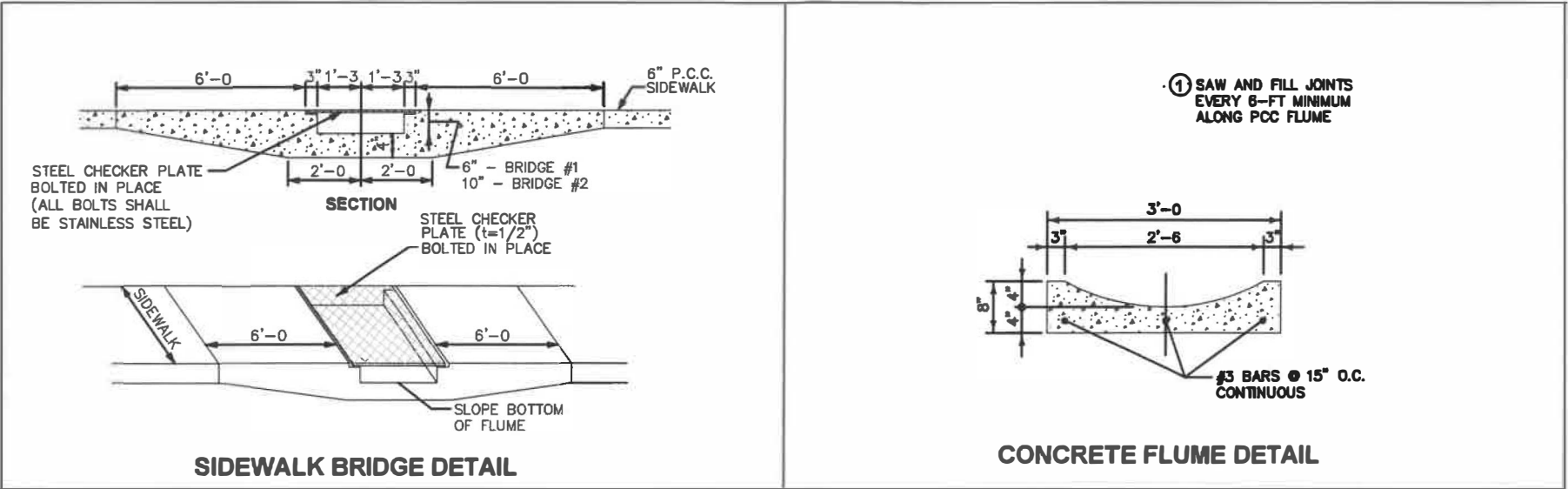


IAARNG BLDG S52 FLUME ADDITION
CONTRACT #: C24254033
PROJECT # 190866331
JOHNSTON, IOWA

ISSUE DATE:
8.10.2022
REVISIONS:

DRAINAGE
FLUMES

C102
PROJECT 2203645



Item No.	Item Code	Item	Unit	Total
1	2010-D-1	TOPSOIL, ON-SITE	CY	311
2	2010-E	EXCAVATION, CLASS 10, WASTE	CY	121.0
3	4020-A-1	STORM SEWER, TRENCHED, EQUIVALENT ARCH, RCP, 18 IN.	LF	46
4	4030-B	PIPE APRON, EQUIVALENT ARCH, RCP, 18 IN.	EA	2
5	7010-A	CONCRETE FLUME	SY	118
6	7030-A	REMOVAL OF FLUME	SY	10
7	ESTIMATE REF.	REMOVE AND REPLACE SIDEWALK BRIDGE INVERT	EA	6
8	9010-B	HYDRAULIC SEEDNG, SEEDING, FERTILIZING, AND MULCHING	AC	0.3
9	9040-D-1	FILTER SOCKS, 12 IN.	LF	800.0
10	11,020-A	MOBILIZATION	LS	1

ESTIMATED REFERENCE INFORMATION		
Item no.	Item Code	Description
1	2010-D-1	TOPSOIL, ON-SITE CONTRACTOR SHALL STRIP, SALVAGE, AND RESPREAD EXISTING TOPSOIL IN ALL DISTURBED AREAS TO A DEPTH OF 8". THIS BID ITEM IS FOR FOR AREAS OUTSIDE OF FLUME CUT.
2	2010-E	EXCAVATION, CLASS 10, WASTE CONTRACTOR SHALL WASTE EXCESS SOIL GENERATED BY CONSTRUCTION OF FLUME.
3	4020-A-1	STORM SEWER, TRENCHED, EQUIVALENT ARCH, RCP, 18 IN.
4	4030-B	PIPE APRON, EQUIVALENT ARCH, RCP, 18 IN. REFER TO C102 FOR STORM LOCATION.
5	7010-A	CONCRETE FLUME REFER TO C102 FOR FLUME CONSTRUCTION LOCATION. SEE FLUME DETAIL ABOVE.
6	7030-A	REMOVAL OF FLUME REFER TO C102 FOR LOCATION.
7	ESTIMATE REF.	REMOVE AND REPLACE SIDEWALK BRIDGE INVERT SEE SIDEWALK BRIDGE DETAIL ABOVE. REFER TO C102 FOR LOCATIONS.
8	9010-B	HYDRAULIC SEEDING, SEEDING, FERTILIZING, AND MULCHING CONTRACTOR SHALL SEED ALL DISTURBED AREAS.
9	9040-D-1	FILTER SOCKS, 12 IN. REFER TO C101 FOR INITIAL PLACEMENT LOCATION.
10	11,020-A	MOBILIZATION MEASUREMENT AND PAYMENT SHALL BE "LUMP SUM" FOR ALL MOBILIZATION WORK.