

ADDENDUM NO. 1

Camp Dodge, Johnston, Iowa
PT-12 Softball Field
Contract No. 422SI227
Project No. 19083681
S & A Project No. 123.1320.01

Bid Date: September 12, 2024
1:30pm

From: Snyder & Associates
2727 SW Snyder Blvd
Ankeny, IA 50023
Contact: Justin Strom, 319-330-0303

To: All Plan Holders of. Camp Dodge, Johnston, Iowa PT-12 Softball Field Project No.
123.1320.01

This Addendum is issued to clarify, revise, add to, or delete information in the original Bidding Documents or in previous addenda and forms a part of the Contract Documents. Acknowledge receipt of this Addendum in the space provided on the Proposal. The bidder has the singular responsibility to make this Addendum available to sub-bidders that are not plan holders of record.

This Addendum consists entirely of the following:

GENERAL INFORMATION

1. A pre-bid meeting was held at 10:00 a.m. September 4, 2024 at building B-61 with a site visit of the project area following the meeting. All questions asked during the meeting have been answered in this addendum. A copy of the meeting sign in sheet has been attached with this addendum.
2. Beeline and Blue is the primary planholders room for the project. All Addendum and associated project documents can only be verified with Beeline and Blue, phone: 515-244-1611.
3. A project cost estimate is included with this addendum.
4. There are no additional warranty items beyond the required 1-year warranty for workmanship and materials as called out in the project documents.
5. Water is available on Camp Dodge Campus for use construction operations as needed. A map to the water filling location, at no charge to the contractor, has been provided for reference.
6. The project is not expected to generate a large amount of fill or waste. Fill dirt and a waste locate are available on Camp Dodge Campus at no charge to the contractor, other than trucking costs for the minimal earthwork associated with the project. A map to the fill/waste location has been provided for reference.

7. All Construction personnel shall have a State or Government issued ID available for entry to the Camp Dodge Campus through the front security gate on 70th Ave. All equipment and personnel are expected to use the front gate unless prior coordination with IAARNG personnel has been worked out for larger construction equipment. Such additional coordination is not anticipated, but is available upon request.
8. Pavement removed can be hauled to the location at Camp Dodge shown on sheet C101. See addendum exhibit.
9. There are no Alternate Bid Items associated with the project.
10. The 12" continuous mow strip detail shown on sheet C400 shall be installed at all chain link fence and backstop fencing, except dugout locations.
11. Pea gravel is an acceptable backfill material for the subdrain tile.

PLANS

12. Sheet C200, Note 3F shall be revised to read:

“4” Subdrain System.”

13. Sheet C200, Note 3H shall be revised to read:

“Subdrain Cleanout.”

14. Sheet C400, Detail 5 shall be revised to read:

“12” Continuous Concrete Mow Strip at Fence.”

15. Sheet C400, Detail 4 Skinned infield at mound and batting box, clarifications as follows:

“Compacted flex-a-clay to be proved at pitcher’s mound in a 3’x 8’ area and home plate in three areas which are 4’x7’ in size, accounting for both batters and catcher area.”

PROJECT MANUAL

16. Section 32 18 23 Infield Construction
Part 1 - General
1.02 Quality Assurance
A. Codes and Standards

“Delete 3A.”

SIGN IN

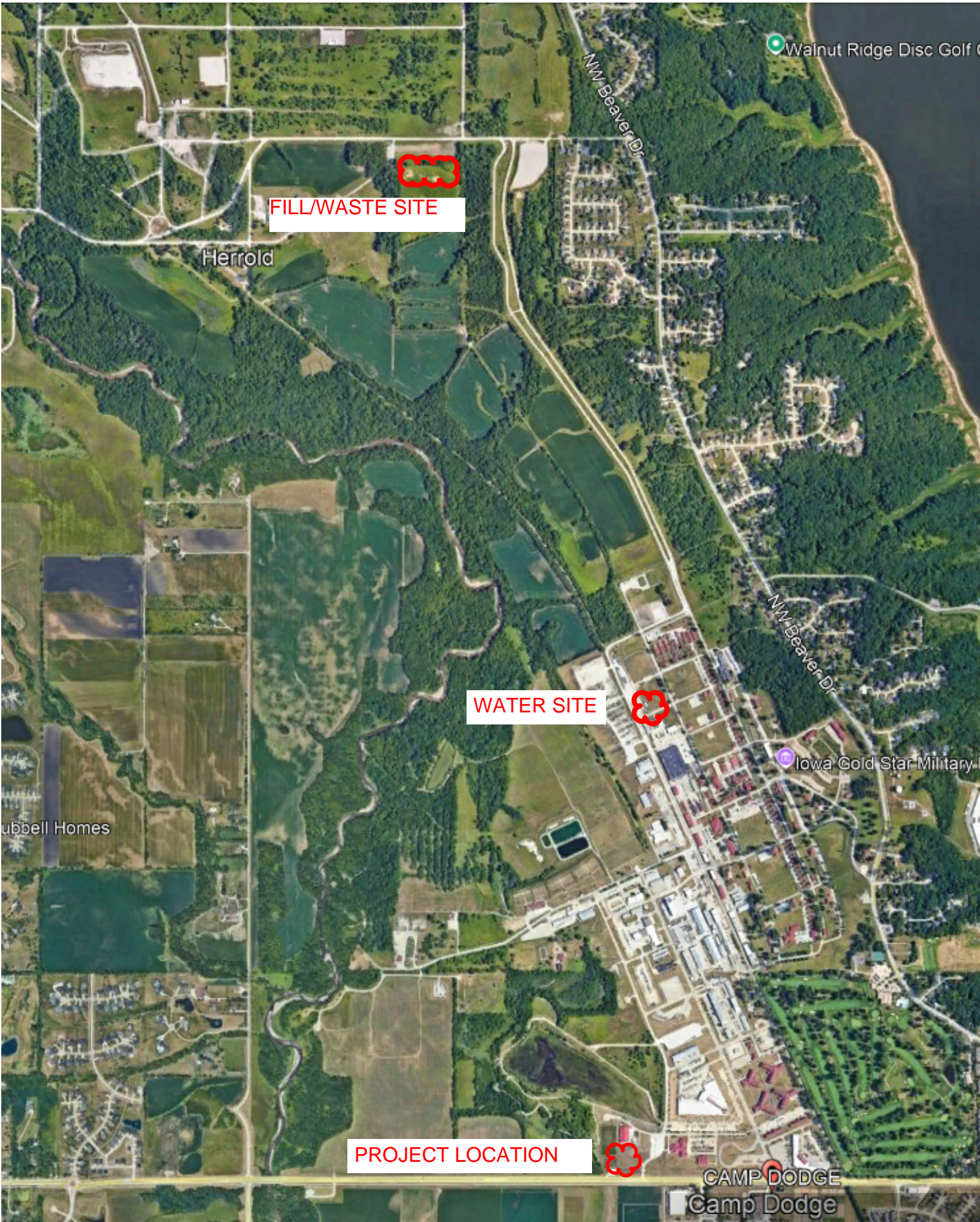
NAME:	COMPANY:	TELEPHONE:	EMAIL:
Eric Van Ginkel	Iowa Sports Turf	515-402-5590	ericv@iowasportsturf.com
MIKE ORLER	JENSEN BUILDERS LTD	515 292 5000	mikeo@jensenbuilders.com
Justin Strom	Snyder & Associates	319-330-0303	jstrom@snyder-associates.com
DON WARNER	SNYDER ASSOC.	515-669-0653	dwarner@snyder-associates.com
CPT Keri Pender	CFMO IAARNDIG	515-252-4767	Keri.pender@army.mil Keri.m.pender.mil@army.mil
Brenda Wilden			
Mike Brothers			



BID OPINION OF PROBABLE PROJECT BUDGET

PT-12 SOFTBALL FIELD
CAMP DODGE, JOHNSTON
 123.1320.01
 8/19/2024

ITEM #	DESCRIPTION	QUANTITY	UNIT	UNIT PRICE	EXTENDED PRICE
DEMOLITION					
1.1	Mobilization	1	LS	\$ 36,000.00	\$ 36,000.00
1.2	Remove Grass Turf @ 2"	100	CY	\$ 12.00	\$ 1,200.00
1.3	Excavate Infield @ 10" Depth	488	CY	\$ 20.00	\$ 9,760.00
1.4	Remove 5" PCC Concrete at Track	100	SF	\$ 8.00	\$ 800.00
EARTHWORK					
2.1	Earthwork	1	LS	\$ 3,000.00	\$ 3,000.00
2.2	Erosion Control	1	LS	\$ 3,500.00	\$ 3,500.00
PAVEMENTS & FENCING					
3.1	6" Depth PCC Slab at Dugouts	55	SY	\$ 70.00	\$ 3,850.00
3.2	6" Depth PCC Sidewalk Replacement	100	SF	\$ 8.50	\$ 850.00
3.3	12" Concrete Mow Strip	502	LF	\$ 30.00	\$ 15,060.00
3.4	8' Ht. (Galv.) Chain Link Fence	460	LF	\$ 55.00	\$ 25,300.00
3.5	Infield Red Ball Diamond Aggregate Mix @ 5in	15,813	SF	\$ 5.35	\$ 84,599.55
3.6	Infield Sand Subbase, 5" Depth	385	TON	\$ 35.00	\$ 13,475.00
SITE UTILITIES					
4.1	Electric Conduit to 3rd Base Dugout	475	LF	\$ 15.00	\$ 7,125.00
SITE AMENITIES					
5.1	Metal Roof Dugouts w/ footings	1	LS	\$ 70,000.00	\$ 70,000.00
5.2	20' (Galv.) Chainlink Backstop with Overhang	1	LS	\$ 15,000.00	\$ 15,000.00
5.3	Bases, Home Plate, Pitching Rubber on Metal Base Posts (Field Only)	1	EA	\$ 1,500.00	\$ 1,500.00
5.4	Fence Topper	400	LF	\$ 12.00	\$ 4,800.00
5.5	Dugout Benches 15' (No Backrests)	2	EA	\$ 1,200.00	\$ 2,400.00
5.6	4" Perforated Subdrain	1,040	LF	\$ 26.00	\$ 27,040.00
SITE RESTORATION					
6.1	Seed Mix and Hydromulch	1.00	AC	\$ 6,500.00	\$ 6,500.00
				Subtotal:	\$ 331,759.55
				Contingency (10%):	\$ 33,175.96
				TOTAL CONSTRUCTION BUDGET:	\$ 365,000.00



FILL/WASTE SITE

WATER SITE

PROJECT LOCATION

Walnut Ridge Disc Golf

Herrold

Iowa Gold Star Military

Hubbell Homes

CAMP DODGE
Camp Dodge