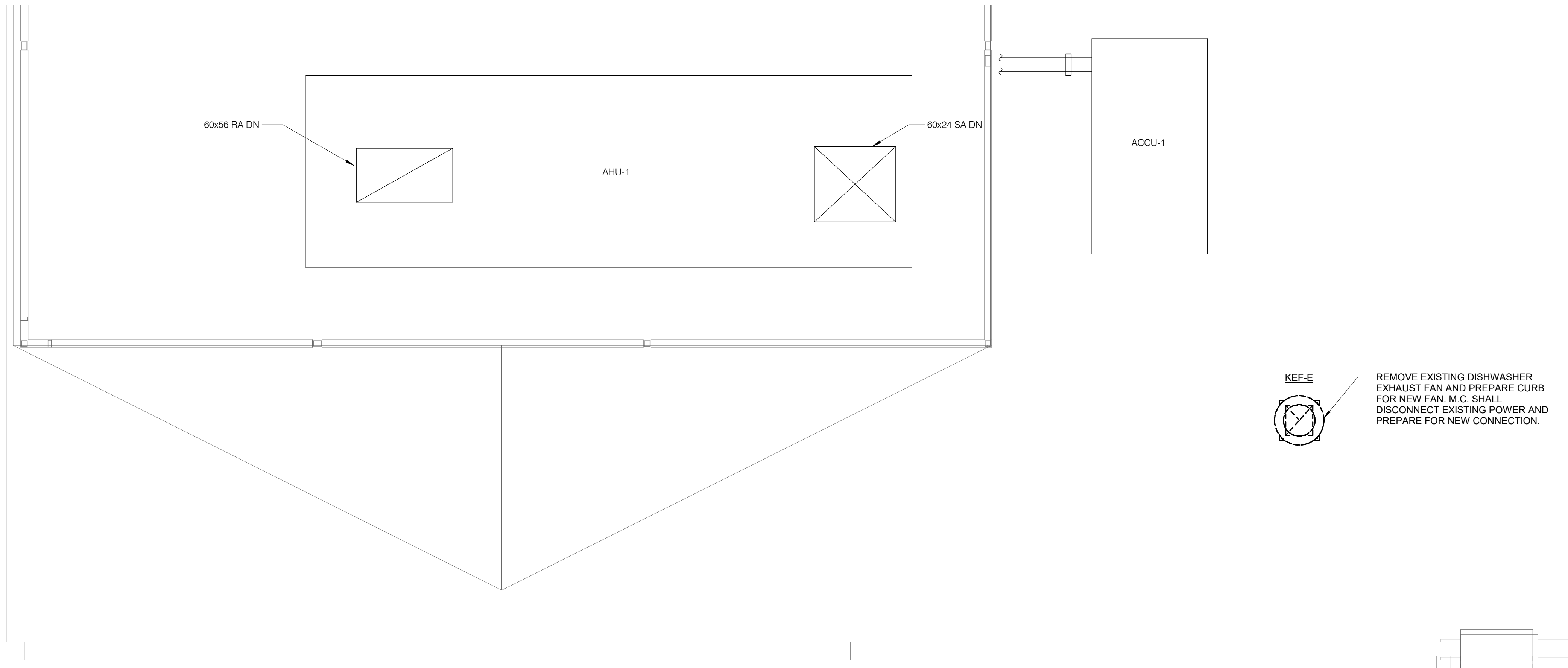


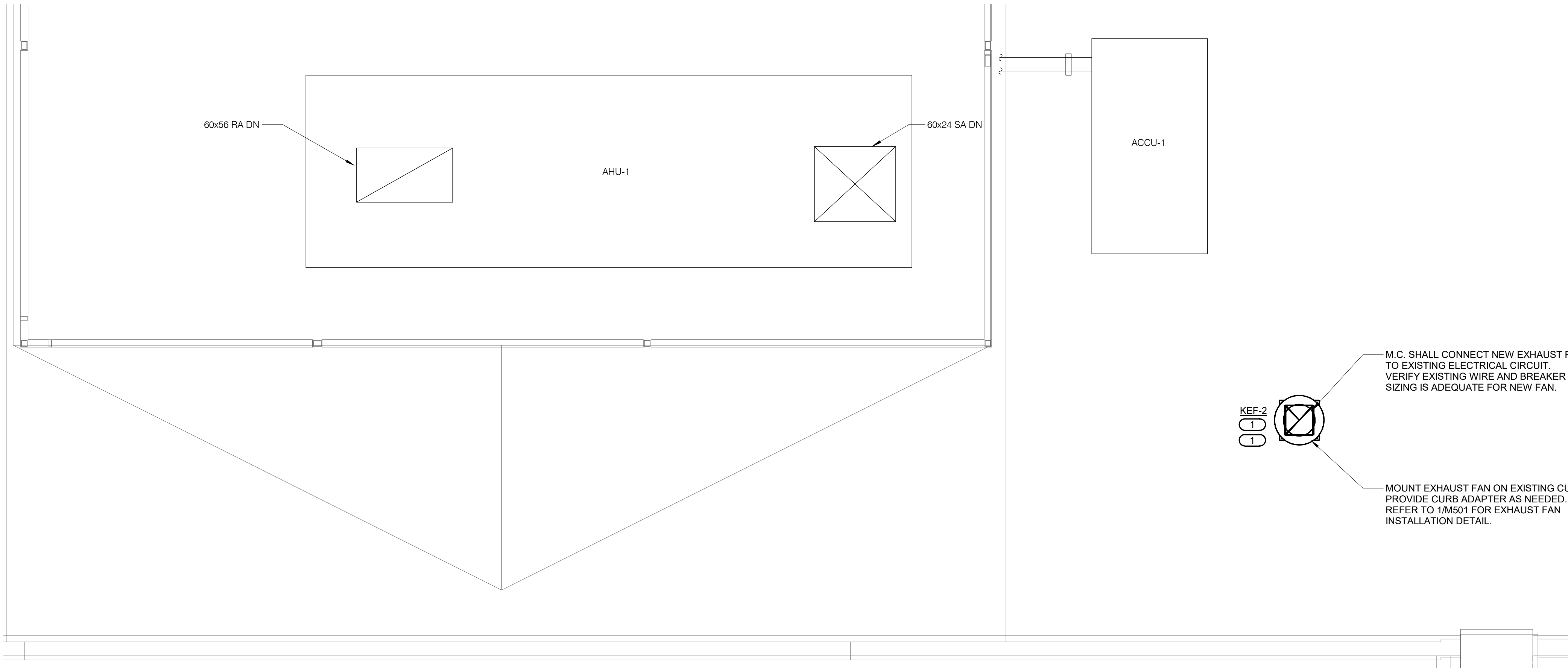
18005158.00 2/22/2019 2:52:02 PM DOC MPCF-Kitchen Dishwasher-Vent Replacement



1

ROOF PLAN - MECHANICAL DEMOLITION

1/4" = 1'-0"



2

ROOF PLAN - MECHANICAL

1/4" = 1'-0"

KEYNOTES :

1. CONNECT NEW EXHAUST FAN TO EXISTING BUILDING AUTOMATION SYSTEM. ALL CURRENT BAS CONTROL SEQUENCES AND POINTS SHALL BE REUSED.

DOC MPCF-Kitchen Dishwasher-Vent Replacement

Mt. Pleasant, Iowa
DAS#9067.00
RFQ0919335104

Mt. Pleasant Correctional Facility



2882 106TH STREET
DES MOINES, IA
50322

PH: 515.334.9906
FAX: 515.334.9908
www.imegcorp.com

PROFESSIONAL SEAL

CONSULTANT

KEY PLAN

AGENCY APPROVAL

DISCLAIMER

IMEG CORP. RESERVES PROPRIETARY RIGHTS, INCLUDING COPYRIGHTS, TO THIS DRAWING AND THE DATA SHOWN THEREON. SAID DRAWING AND/OR DATA ARE THE EXCLUSIVE PROPERTY OF IMEG CORP. AND SHALL NOT BE USED OR REPRODUCED FOR ANY OTHER PROJECT WITHOUT THE EXPRESS WRITTEN APPROVAL AND PARTICIPATION OF IMEG CORP. © 2019 IMEG CORP.

REFERENCE SCALE IN INCHES
0 1 2

REVISIONS

No.	Date	Revision / Issue
-----	------	------------------

SHEET INFORMATION

Issue	100% BID DOCUMENTS
Date	02-22-19
Job Number	18005158.00
Drawn	NJH
Checked	NKJ
Approved	DCI

SHEET TITLE

ROOF PLAN - MECHANICAL

SCALE

Scale: 1/4" = 1'-0"

SHEET NUMBER

M102

FAN SCHEDULE

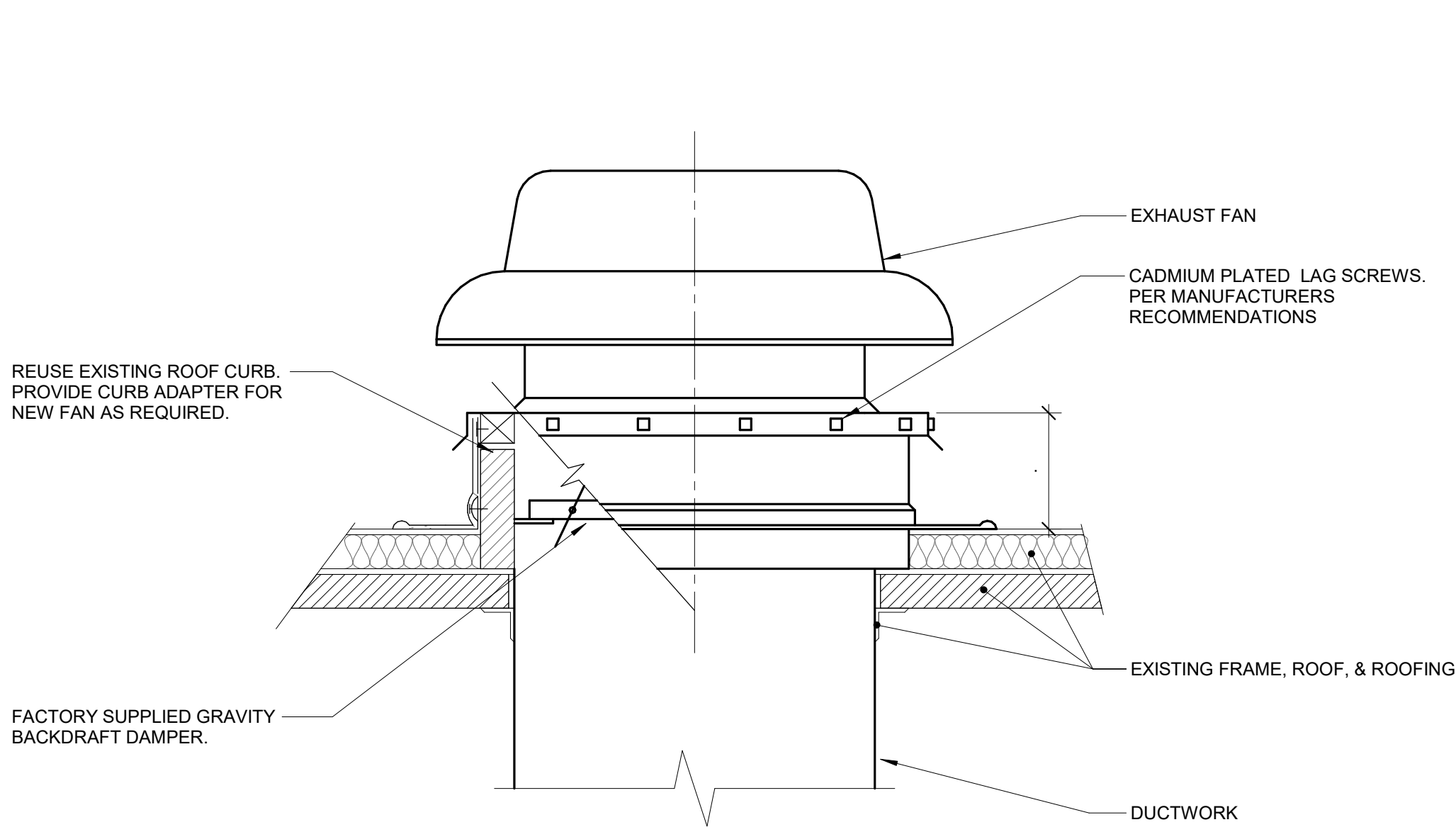
NOTES:

1. M.C. SHALL CONNECT NEW EXHAUST FAN TO EXISTING 120 VOLT CIRCUIT.
2. FAN SHALL HAVE ALL ALUMINUM CONSTRUCTION, SUITABLE FOR CONVEYING AIR WITH HIGH MOISTURE CONTENT.
3. FAN WHEEL SHALL BE CENTRIFUGAL TYPE, ALUMINUM HUB AND WHEEL WITH BACKWARD INCLINED BLADES, STATICALLY AND DYNAMICALLY BALANCED.
4. FAN HOUSING SHALL BE REMOVABLE, SPUN ALUMINUM DOME OR RECTANGULAR TOP, WITH SQUARE, ONE PIECE, ALUMINUM BASE AND CURB CAP WITH VENTURI INLET CONE.
5. FAN SHAFT SHALL BE TURNED, GROUND AND POLISHED STEEL; KEYED TO WHEEL HUB.
6. ALL STEEL PARTS EPOXY COATED WITH NON CORROSIVE FASTENERS.
7. V BELT DRIVE WITH ADJUSTABLE PITCH DRIVE SHEAVE AND ADJUSTABLE MOTOR MOUNTINGS FOR BELT TENSIONING.
8. MOTOR MOUNTED OUTSIDE OF AIR STREAM AND VENTILATED WITH OUTSIDE AIR.
9. ALUMINUM OR BRASS BIRD SCREEN.
10. DAMPERS SHALL BE ALUMINUM WITH BRASS BUSHINGS, BLADE SEALS AND BLADE TIE RODS. LEAKAGE SHALL NOT EXCEED 4 CFM/SQ.FT @1" SP (OR SHALL BE AMCA CLASS 1 CERTIFIED).
11. PROVIDE WITH MILL ALUMINUM FINISH.
12. PERMANENTLY LUBRICATED, PERMANENTLY SEALED, SELF-ALIGNING BALL BEARINGS.
13. PROVIDE UNITED ENERTECH CURB ADAPTER, OR APPROVED EQUAL, TO CONNECT NEW EXHAUST FAN TO EXISTING CURB.

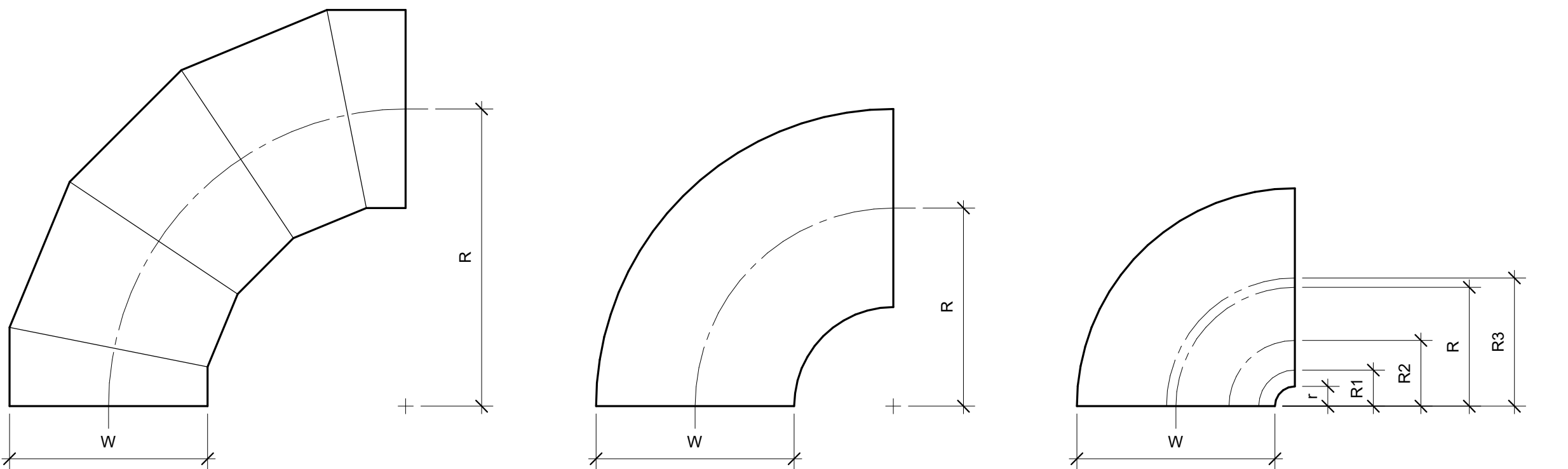
TAG NAME	AREA SERVED	CFM	S.P. IN. W.C.	FAN RPM (NOTE D & F)	DRIVE TYPE	MAX. AMCA SONES	BACKDRAFT DAMPER TYPE	CURB TYPE	ELECTRICAL (NOTE 1)								MANUFACTURER	MODEL	NOTES
									BHP (NOTE E)	MHP	VOLTAGE	PHASES	DISCONNECT		CONTROLLER/ STARTER				
													BY (NOTE A)	TYPE (NOTE B)	BY (NOTE A)	TYPE (NOTE C)			
KEF-2	DISHWASHER	2100	1.20	1575	BELT	16.5	GRAVITY	NOTE 13	0.9	1	120	1	MFR	NF	MFR	FV	PENN BARRY	DX	NOTES 2, 3, 4, 5, 6, 7, 8, 9, 10, 11, 12

SCHEDULE GENERAL NOTES

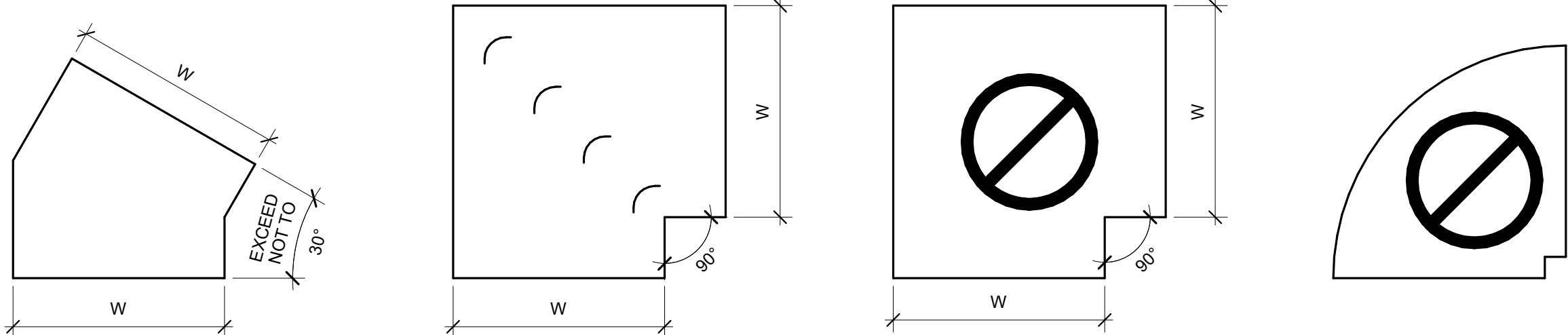
KEY NAME	SCHEDULE GENERAL NOTES
A.	DISCONNECT AND CONTROLLER STARTER FURNISHED AND INSTALLED BY:
	MFR = MANUFACTURER
B.	DISCONNECT TYPE:
	NF = NON-FUSED
C.	CONTROLLER STARTER TYPE:
	FV = FULL VOLTAGE
D.	FAN RPM SHALL NOT EXCEED 110% OF SCHEDULED VALUE.
E.	NO EQUIPMENT SHALL BE SELECTED ABOVE 90% OF MOTOR NAME PLATE RATING.
F.	MUST BE WITHIN +/- 10% OF SCHEDULED RPM.



1 ROOF MOUNTED FAN
NO SCALE



REFER TO SMACNA HVAC SYSTEMS DUCT DESIGN MANUAL, FOURTH EDITION, SECTION 5.14 "SPLITTER VANES" AND SMACNA HVAC DUCT CONSTRUCTION STANDARDS, THIRD EDITION, FIGURES 4-2 AND 4-9 AND CHARTS 4-1 AND 4-1M. ELBOW SHALL HAVE THREE SPLITTER VANES AND r/W = 0.10 (R/W = 0.60) UNLESS NOTED OTHERWISE.



RECTANGULAR MITERED ELBOW TYPE RE6
USE ONLY AS PART OF OFFSETS AND TRANSITIONS PER FIGURE 4-7 TYPE 2 OR AS SHOWN ON DRAWINGS. OFFSETS ABOVE 30° SHALL BE TYPE RE1.

RECTANGULAR MITERED ELBOW WITH VANES TYPE RE2

RECTANGULAR / OVAL / ROUND MITERED ELBOW WITHOUT VANES TYPE RE4
NOT ALLOWED

RECTANGULAR RADIUS ELBOW WITH SQUARE THROAT
NOT ALLOWED

2 ELBOW CONSTRUCTION
NO SCALE

NOTES:

1. BEAD, CROSSBREAK, AND REINFORCE FLAT SURFACES AS IN STRAIGHT DUCT.
2. DEFAULT ELBOW SHALL BE TYPE "RE1".
3. ELBOW TYPES SHALL BE INSTALLED AS SHOWN AND NOT BE SUBSTITUTED WITHOUT PERMISSION. EXCEPTION: RE1 OR RE3 MAY BE SUBSTITUTED FOR RE2.

DOC MPCF-Kitchen Dishwasher-Vent Replacement

Mt. Pleasant, Iowa
DAS#9067.00
RFQ0919335104

Mt. Pleasant Correctional Facility



2882 106TH STREET
DES MOINES, IA
50322

PH: 515.334.9906
FAX: 515.334.9908
www.imegcorp.com

PROFESSIONAL SEAL

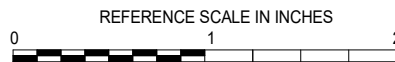
CONSULTANT

KEY PLAN

AGENCY APPROVAL

DISCLAIMER

IMEG CORP. RESERVES PROPRIETARY RIGHTS, INCLUDING COPYRIGHTS, TO THIS DRAWING AND THE DATA SHOWN THEREON. SAID DRAWING AND/OR DATA ARE THE EXCLUSIVE PROPERTY OF IMEG CORP. AND SHALL NOT BE USED OR REPRODUCED FOR ANY OTHER PROJECT WITHOUT THE EXPRESS WRITTEN APPROVAL AND PARTICIPATION OF IMEG CORP. © 2015 IMEG CORP.



REVISIONS

No. Date Revision / Issue

SHEET INFORMATION

Issue 100% BID DOCUMENTS
Date 02-22-19
Job Number 18005158.00
Drawn NJH
Checked NKJ
Approved DCI

SHEET TITLE

MECHANICAL DETAILS AND SCHEDULES

SCALE

Scale: 12" = 1'-0"

SHEET NUMBER

M501