



STATE OF IOWA
DEPARTMENT OF AGRICULTURE AND LAND STEWARDSHIP
DIVISION OF SOIL CONSERVATION AND WATER QUALITY

**Poc903130C NUTRIENT REDUCTION
WETLAND PROJECT**

**CONSTRUCTION CONTRACT
BID NO. 24-01**

SECTION 30, TOWNSHIP 90 NORTH, RANGE 31 WEST
POCAHONTAS COUNTY, IOWA

PREPARED FOR: IOWA DEPARTMENT OF AGRICULTURE & LAND STEWARDSHIP
DIVISION OF SOIL CONSERVATION AND WATER QUALITY
WALLACE STATE OFFICE BUILDING
502 EAST 9TH STREET
DES MOINES, IOWA 50319
515-281-4246

PREPARED BY: DUCKS UNLIMITED
209 EUGENE ST
RADCLIFFE, IA 50230
832-704-3286

March 2023

TABLE OF CONTENTS

GENERAL REQUIREMENTS

		Page(s)
DOCUMENT AA	Notice-to-Bidders	AA 1
DOCUMENT BB	Instruction-to-Bidders	BB 1-5
DOCUMENT CC	Proposal and Schedule of Prices	CC 1-5
DOCUMENT DD	Construction Contract	DD 1-2
DOCUMENT EE	Proposal Guarantee (Bid Bond)	EE 1
DOCUMENT FF	General Conditions	FF 1-27
DOCUMENT GG	Special Conditions	GG 1-3
DOCUMENT NN	Performance Bond	NN 1-3

CONSTRUCTION SPECIFICATIONS

IA-01	Site Preparation	1-1 to 1-3
IA-05	Pollution Control	5-1 to 5-3
IA-06	Seeding and Mulching for Protective Cover	6-1 to 6-4
CS-08	Mobilization & Demobilization Drain Tile	8-1 to 8-3
IA-09	Investigation and Removal	9-1 to 9-5
IA-21	Excavation	21-1 to 21-4
IA-23	Earthfill	23-1 to 23-5
IA-26	Topsoiling	26-1 to 26-2
IA-31	Concrete	31-1 to 31-7
IA-46	Tile Drains for Land Drainage Corrugated	46-1 to 46-4
IA-51	Metal Pipe Conduits	51-1 to 51-6
IA-61	Loose Rock Riprap	61-1 to 61-4
IA-95	Geotextile	95-1 to 95-5

PLANS

Cover Sheet	001
Specifications, Quantities, & Notes	002
Topography ^ Existing Conditions	051
Site Plan	101
Structure, Inlet, Berm, & Riprap Plan	201
Structure, Berm, & Wetland Profiles	202
Clay Core & 10-inch Tile Profiles & Riprap Toe	203
Water Control Structure Plan	204
Tile Plan	205
Water Control Structure Details	301
CMP WCS Details	302
Agri Drain WCS Details	303
Articulating Concrete Block Details	304
Seeding Plan	401

APPENDIX I – ADDENDA & BID TAB

***(ADDED AFTER BIDDING)**

Addenda, if applicable	*
Pre-Bid Meeting Minutes	*
Pre-Bid Meeting Attendance List	*
Updated Plan Holders List	*
Bid Tab	*

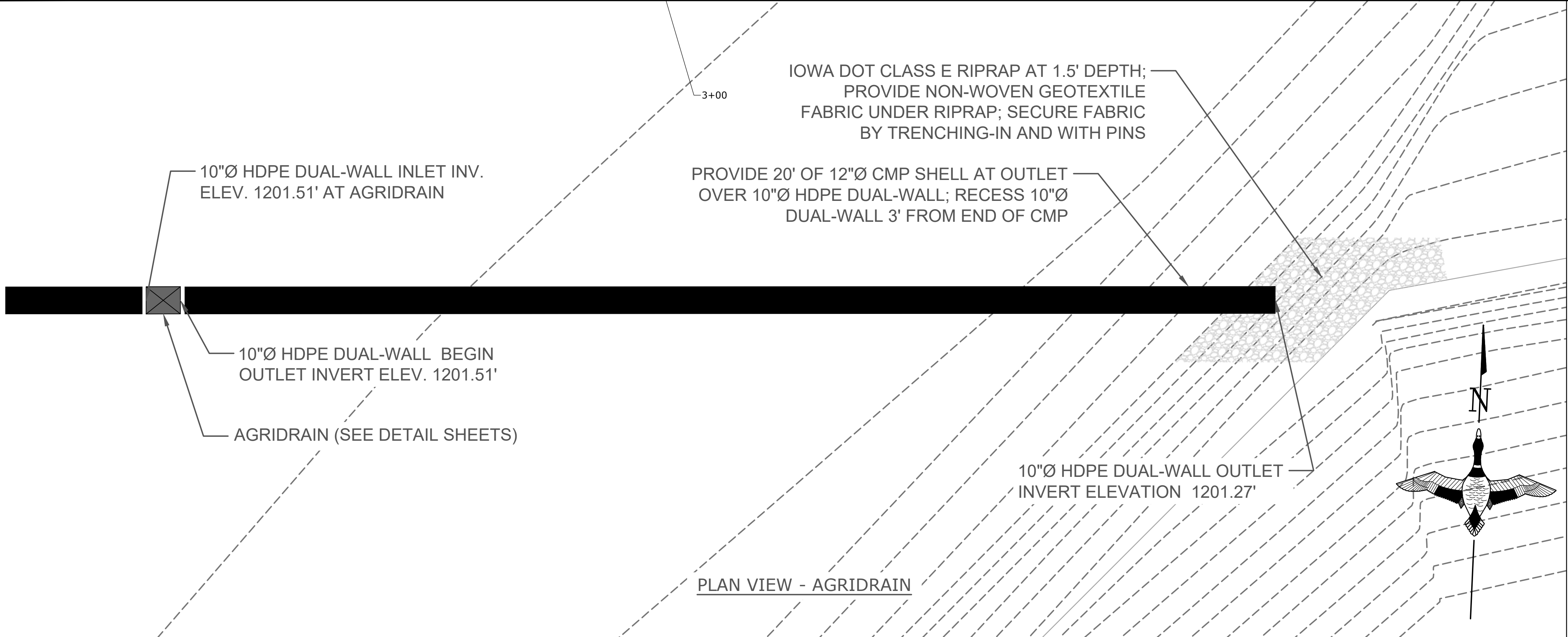
APPENDIX II – CONSTRUCTION ADMINISTRATION FORMS

DOCUMENT LL	Notice-of-Award	LL 1
DOCUMENT MM	Notice-to-Proceed	MM 1
DOCUMENT JJ	Construction Progress Schedule	JJ 1-2
DOCUMENT SS	Application & Certificate for Payment	SS 1-2
DOCUMENT HH	Change Order Request	HH 1-2
DOCUMENT II	Construction Contract Amendment	II 1-3
DOCUMENT QQ	Iowa Sales & Use Tax Form	QQ 1

APPENDIX III – DESIGN CALCULATIONS

PLANS

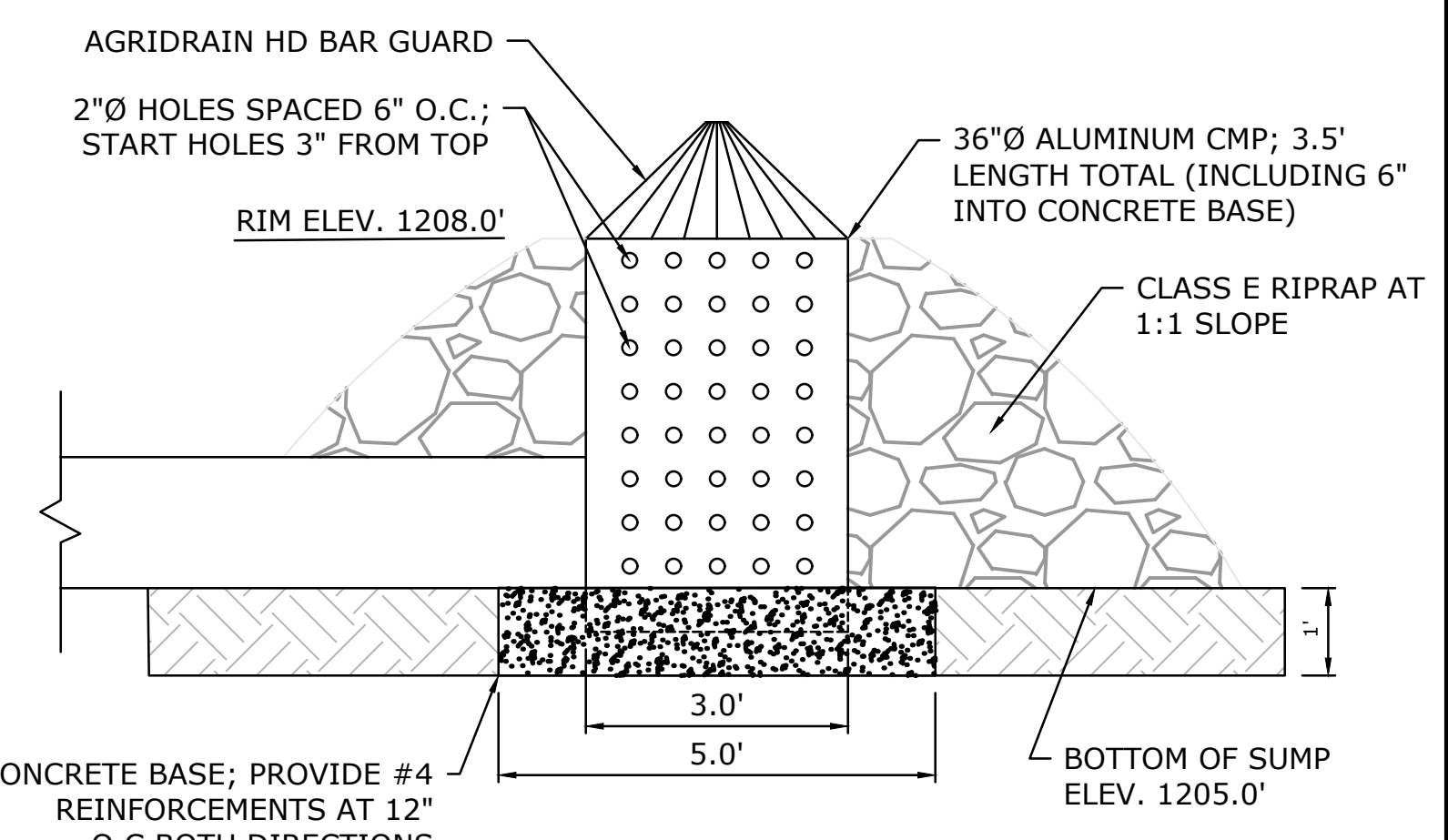
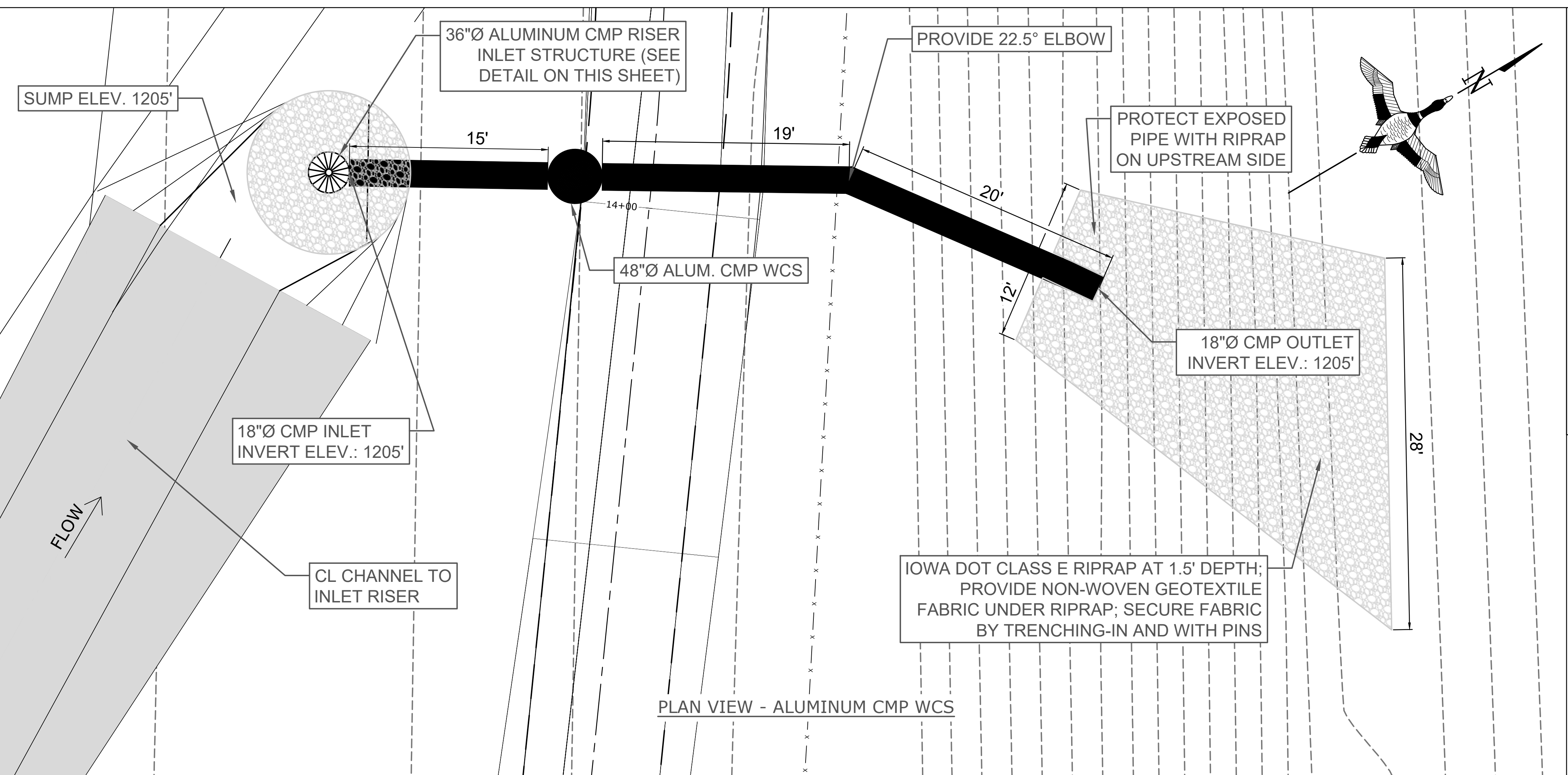
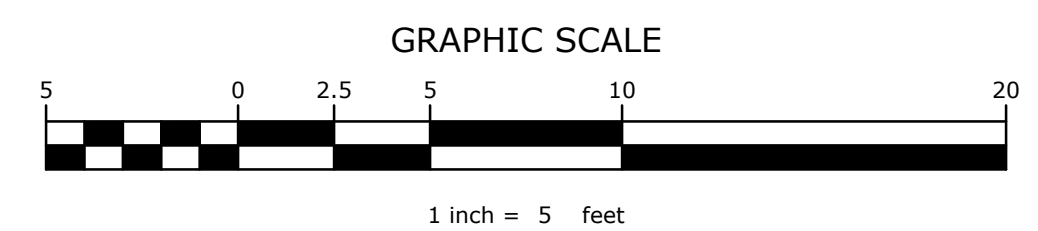
NOTICE: CONSTRUCTION SITE SAFETY IS THE SOLE RESPONSIBILITY OF THE CONTRACTOR. DUCKS UNLIMITED, INC. SHALL NOT ASSUME ANY RESPONSIBILITY FOR THE SAFETY OF THE WORK PERFORMED, PERSONS ENGAGED IN THE WORK, NEARBY STRUCTURES, OR OF OTHER PERSONS ON-SITE. THIS MATERIAL, DATA AND INFORMATION IS PROVIDED FOR YOUR INFORMATION ONLY AND IS NOT TO BE USED FOR ANY OTHER PURPOSE. DUCKS UNLIMITED, INC. IS NOT RESPONSIBLE FOR THE RESULTS OF ANY ALTERATION OR MODIFICATION OF THIS MATERIAL, DATA AND INFORMATION. BY USING ANY OF THIS MATERIAL, DATA AND INFORMATION, USER AGREES THAT DUCKS UNLIMITED, INC. IS NOT RESPONSIBLE FOR THE RESULTS THEREOF. THE USER SHALL BE RESPONSIBLE FOR THE SAFETY OF THE WORK PERFORMED, PERSONS ENGAGED IN THE WORK, NEARBY STRUCTURES, OR OF OTHER PERSONS ON-SITE. THE USER SHALL BE RESPONSIBLE FOR THE SAFETY OF THE WORK PERFORMED, PERSONS ENGAGED IN THE WORK, NEARBY STRUCTURES, OR OF OTHER PERSONS ON-SITE. THE USER SHALL BE RESPONSIBLE FOR THE SAFETY OF THE WORK PERFORMED, PERSONS ENGAGED IN THE WORK, NEARBY STRUCTURES, OR OF OTHER PERSONS ON-SITE. THE USER SHALL BE RESPONSIBLE FOR THE SAFETY OF THE WORK PERFORMED, PERSONS ENGAGED IN THE WORK, NEARBY STRUCTURES, OR OF OTHER PERSONS ON-SITE.



ESTIMATED QUANTITIES

DESCRIPTION	QUANTITY
10"Ø CMP	20 L.F.
18"Ø ALUM. CMP	54 L.F.

NOTE:
CONTRACTOR SHALL PROVIDE STAINLESS STEEL RAT GUARDS AT EXPOSED INLETS AND OUTLETS



36" ALUMINUM CMP RISER INLET STRUCTURE
SCALE: 1" = 3'

NOTE:
ALL CONNECTIONS SHALL BE MADE USING PRE-FABRICATED WATERTIGHT CONNECTIONS FROM MANUFACTURER, OR ELSE, PROVIDE WITH MAR-MAC WRAP AND CONCRETE COLLARS.

GREAT LAKES/ATLANTIC REGIONAL OFFICE
7322 NEWMAN BOULEVARD, BUILDING 2
DEXTER, MICHIGAN 48130
(734) 623-2000 www.ducks.org

DUCKS UNLIMITED

WATER CONTROL STRUCTURE PLAN
POC903130C
POCAHONTAS COUNTY IOWA

Revisions	Sheet	By	Date
0		A.S.	1-19-23
1		A.S.	12-12-23
2		A.S.	1-15-24

POCAHONTAS - MOLINE C101 SITE PLAN

DESIGNED BY: A.S.

DRAWN BY: A.S.

SURVEYED BY: IDALS

BIOLOGIST: M.S.

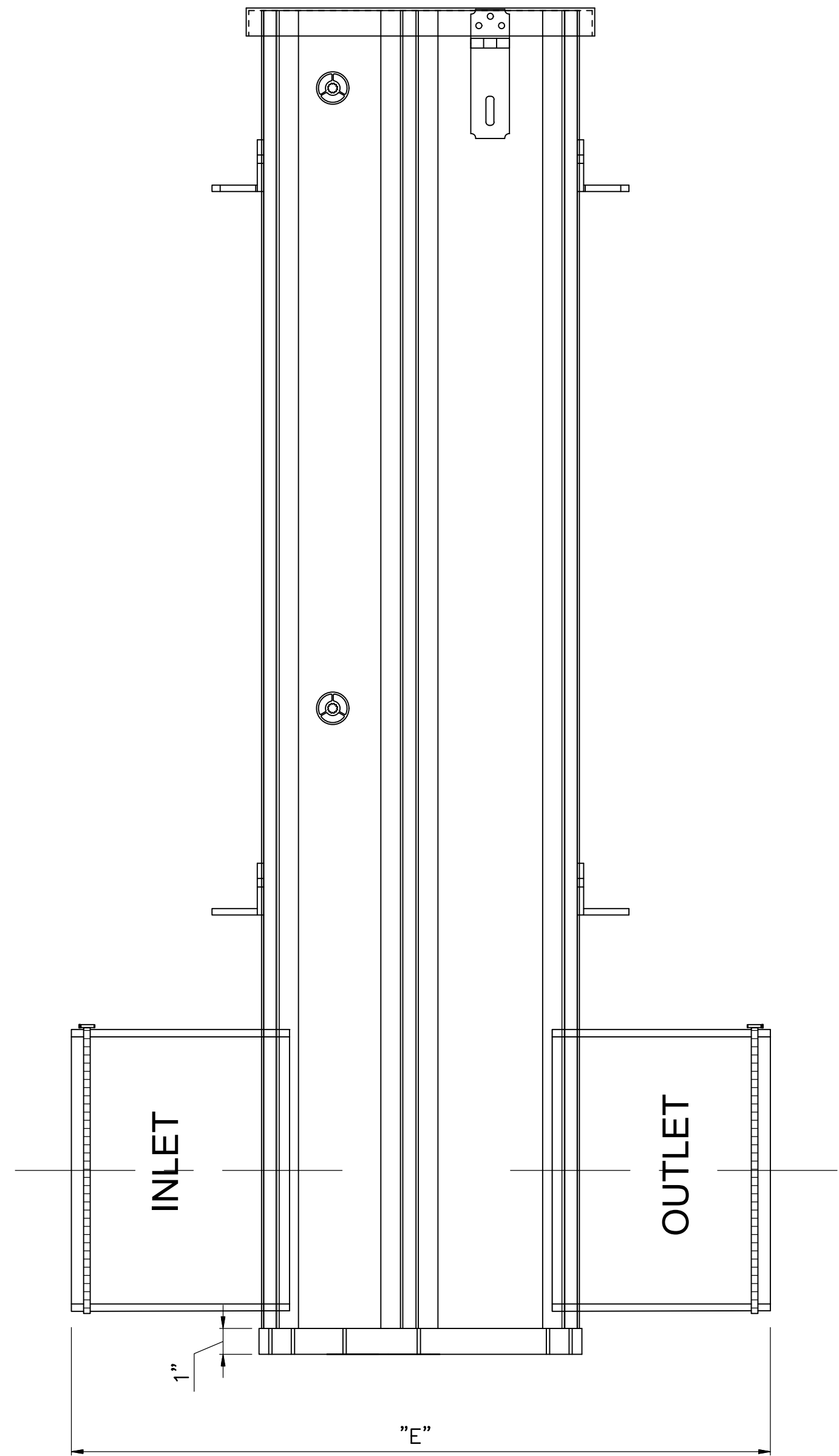
DATE: 1-15-24

PROJECT NUMBER: US-IA-340-3

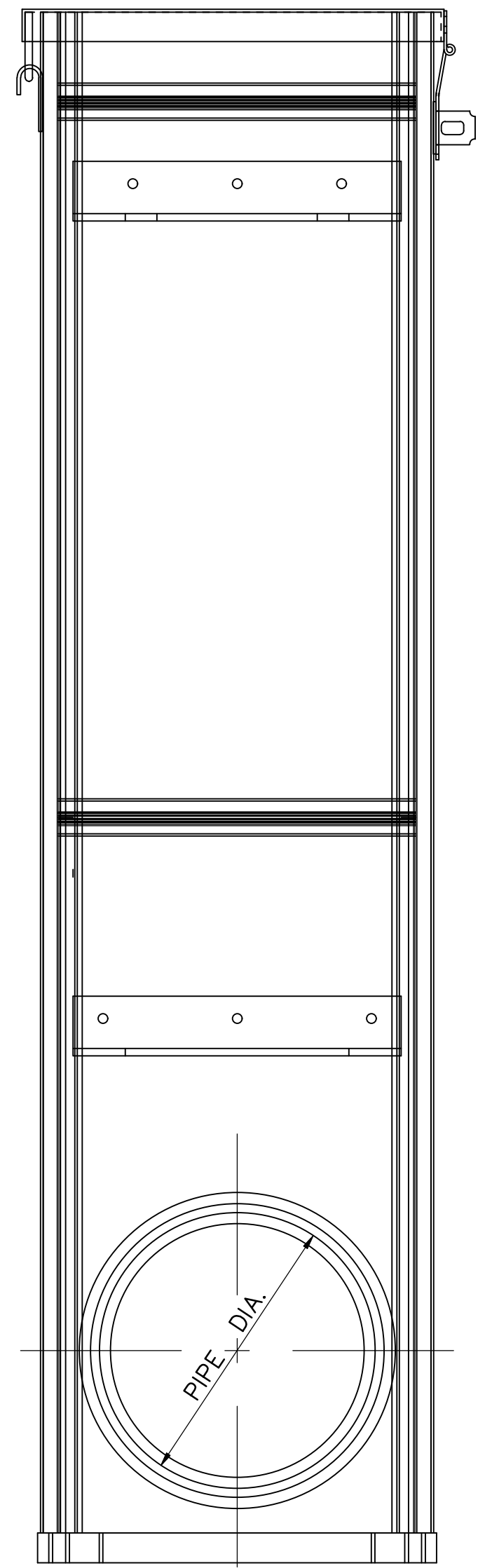
GLARO-340-3-C204

NOT FOR CONSTRUCTION

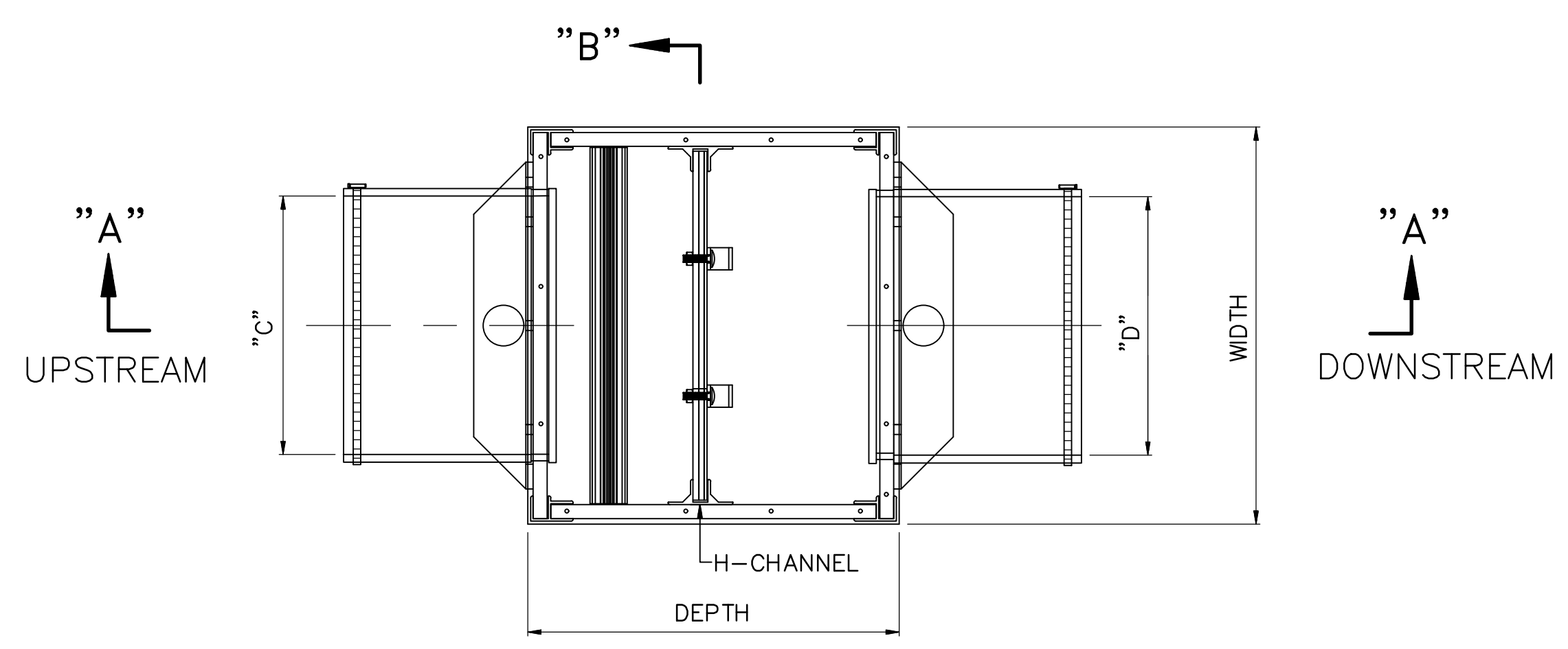
NOTICE: CONSTRUCTION SITE SAFETY IS THE SOLE RESPONSIBILITY OF THE CONTRACTOR. DUCKS UNLIMITED, INC. SHALL NOT ASSUME ANY RESPONSIBILITY FOR THE SAFETY OF THE WORK PERFORMED, PERSONS ENGAGED IN THE WORK, NEARBY STRUCTURES, OR OF OTHER PERSONS ON-SITE. THIS DRAWING, DATA AND INFORMATION IS THE PROPERTY OF DUCKS UNLIMITED, INC. AND IS TO BE USED ONLY FOR THE PROJECT AND SITE SPECIFICALLY IDENTIFIED HEREON. NO PART OF THIS DRAWING, DATA AND INFORMATION IS TO BE REPRODUCED, COPIED, STORED, RETRIEVED, TRANSMITTED, OR OTHERWISE DISCLOSED IN ANY MANNER WITHOUT THE PRIOR WRITTEN CONSENT OF DUCKS UNLIMITED, INC. DUCKS UNLIMITED, INC. MAKES NO WARRANTY, REPRESENTATION, OR AGREEMENT OF ANY KIND, EXPRESS OR IMPLIED, REGARDING THE ACCURACY, COMPLETENESS, OR RELIABILITY OF THE INFORMATION OR DATA PROVIDED HEREON. THE USER AGREES TO HOLD DUCKS UNLIMITED, INC. HARMLESS FROM AND AGAINST ALL CLAIMS, DAMAGES, LOSSES AND EXPENSES, INCLUDING REASONABLE ATTORNEY'S FEES, ARISING OUT OF OR RESULTING FROM THE USE OF THE MATERIAL, DATA AND INFORMATION OR THE RESULTS THEREOF. THIS DRAWING, DATA AND INFORMATION IS PROVIDED AS-IS AND MAY BE ALTERED WITHOUT NOTICE. THE USER SHALL STAMP THE DOCUMENT AND INCLUDE THE NOTATION "ALTERED BY" FOLLOWED BY THEIR SIGNATURE, THE DATE OF SUCH ALTERATION, AND A SPECIFIC DESCRIPTION OF THE ALTERATION. C:\Users\schippers\Documents\Iowa - Iowa\02_C3D Projects\IA-340-2_CREP PROJECT\POCAHONTAS HOLINE\C3D_DRAWING\POCAHONTAS - HOLINE C301_DETAILS.dwg, 1/16/2024 12:35 PM, Andrew Schippers, AGRIDRAIN DETAILS, None



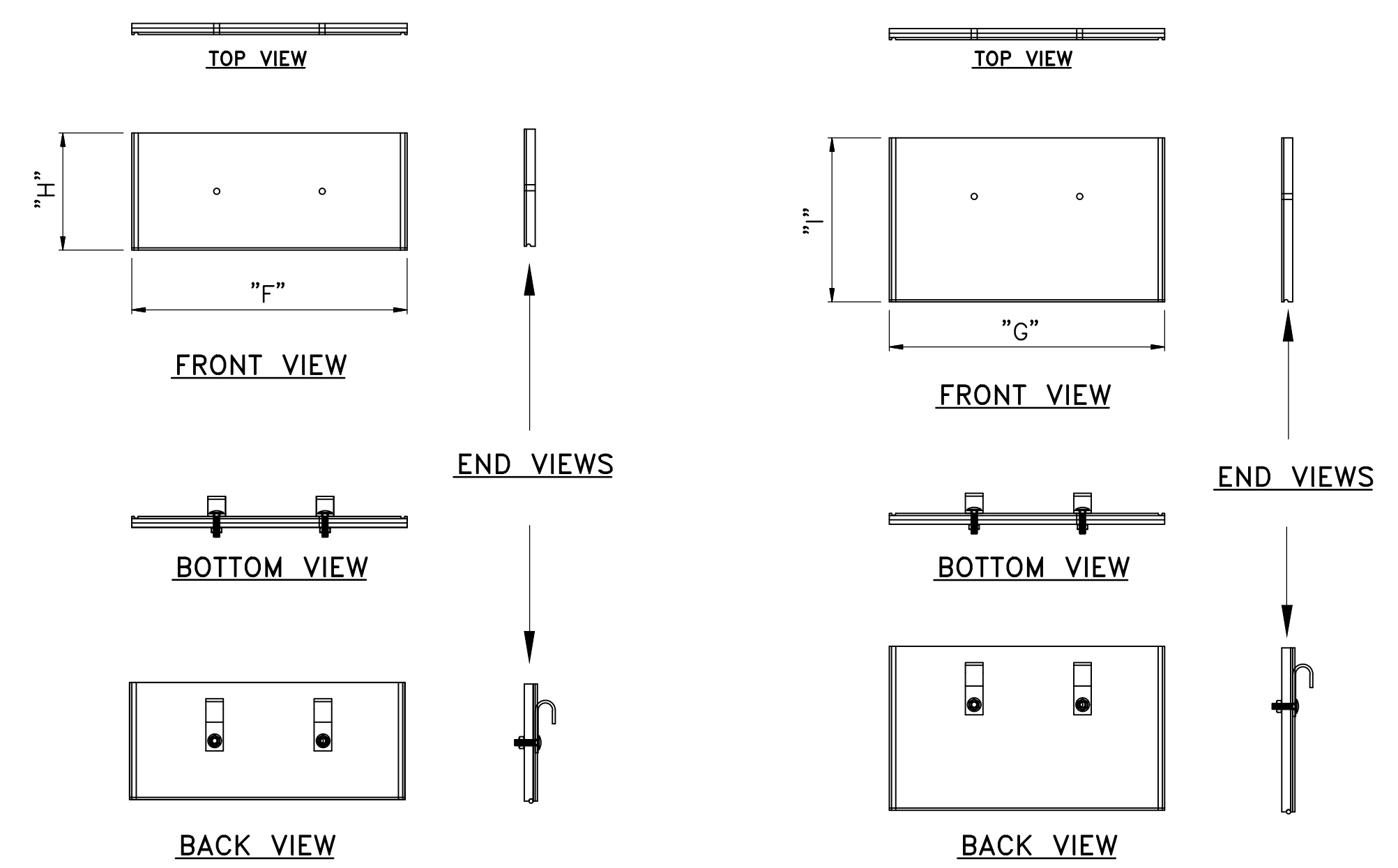
SECTION "A"-"A"



SECTION "B"-"B"



PLAN VIEW
(DRAWN WITH FERNCO 1056 COUPLER)



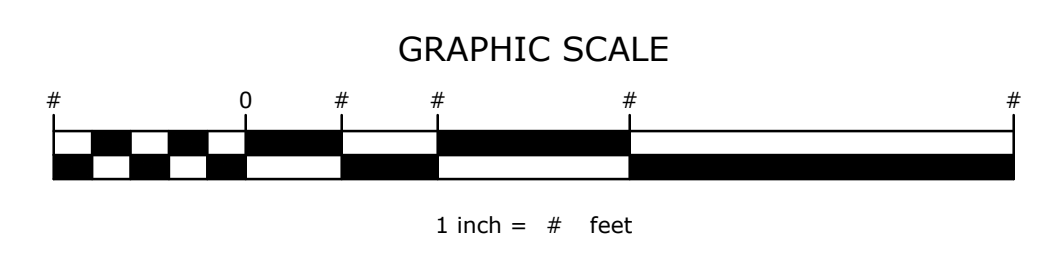
STOPLOG DETAIL
NOT TO SCALE

* CONTRACTOR TO PROVIDE ENOUGH AGRIDRAIN STOPLOGS TO EXTEND FROM STRUCTURE INVERT TO STRUCTURE TOP.

PIPE* DIA.	INSIDE DIM.		COUPLING DIM.		COUPLING LENGTH	STOPLOG DIM.			
	WIDTH	DEPTH	"C" (I.D.)	"D" (I.D.)		WIDTH		HEIGHT	
					"E"	"F"	"G"	"H"	"I"
4"	8"	10"	4.42"	4.42"	17.5"	7.75"	7.75"	5"	7"
6"	8"	10"	6.38"	6.38"	17.5"	7.75"	7.75"	5"	7"
8"	12"	12"	8.50"	8.50"	23.5"	11.75"	11.75"	5"	7"
10"	14"	16"	10.60"	10.60"	27.5"	13.75"	13.75"	5"	7"
12"	16"	20"	12.83"	12.83"	31.5"	15.75"	15.75"	5"	7"
15"	20"	24"	17.85"	17.85"	43.5"	19.75"	19.75"	5"	7"
18"	24"	28"	21.70"	21.70"	47.5"	23.75"	23.75"	5"	7"
24"	31"	39"	29.00"	29.00"	58.5"	30.75"	30.75"	5"	7"

* ALL APPLICATIONS WILL UTILIZE EITHER SCHEDULE 35 OR 40 PVC PIPE OR DUAL WALL HANCOR BLUE SEAL PIPE OR APPROVED EQUAL FOR ATTACHMENT TO INLINE WATER CONTROL STRUCTURE

AGRI-RAIN[®] INLINE WATER LEVEL CONTROL STRUCTURE DETAIL
NOT TO SCALE



GREAT LAKES/ATLANTIC REGIONAL OFFICE
7322 NEWMAN BOULEVARD, BUILDING 2
DEXTER, MICHIGAN 48130
(734) 623-2000 www.ducks.org

AGRIDRAIN WCS DETAILS
POC903130C
POCAHONTAS COUNTY
IOWA

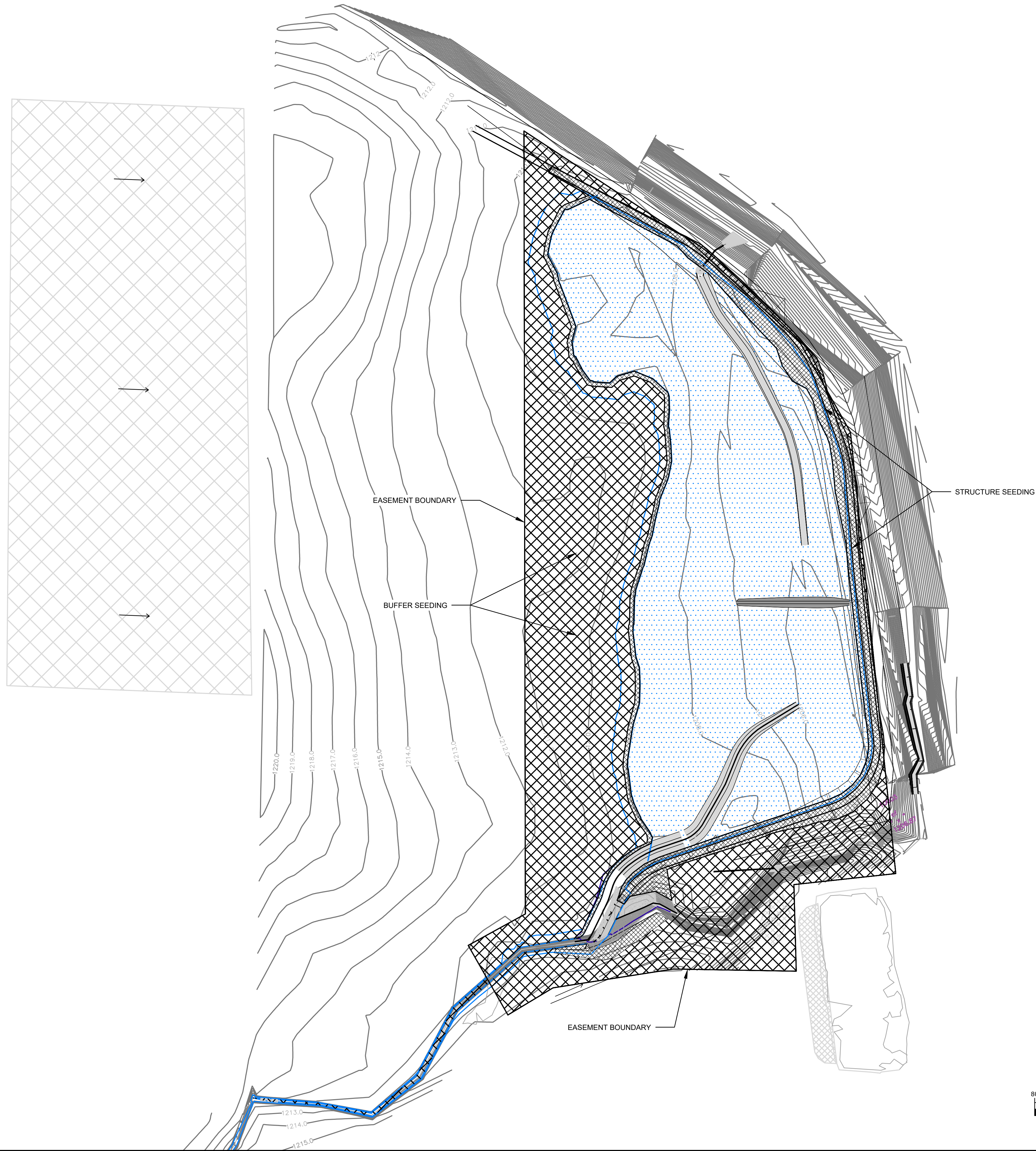
Revision	Sheet	Revisions	Date	By
0		ISSUED FOR PERMITS	1-19-23	A.S.
1		RUPRAP TOE DETAIL	12-1-23	A.S.
2		IDALS REVIEW COMMENTS	1-15-24	A.S.

POCAHONTAS - HOLINE C301
DETAILS
DESIGNED BY: A.S.
DRAWN BY: A.S.
SURVEYED BY: IDALS
BIOLOGIST: M.S.
DATE:
1-15-24
PROJECT NUMBER:
US-IA-340-3
GLARO-340-3-C303

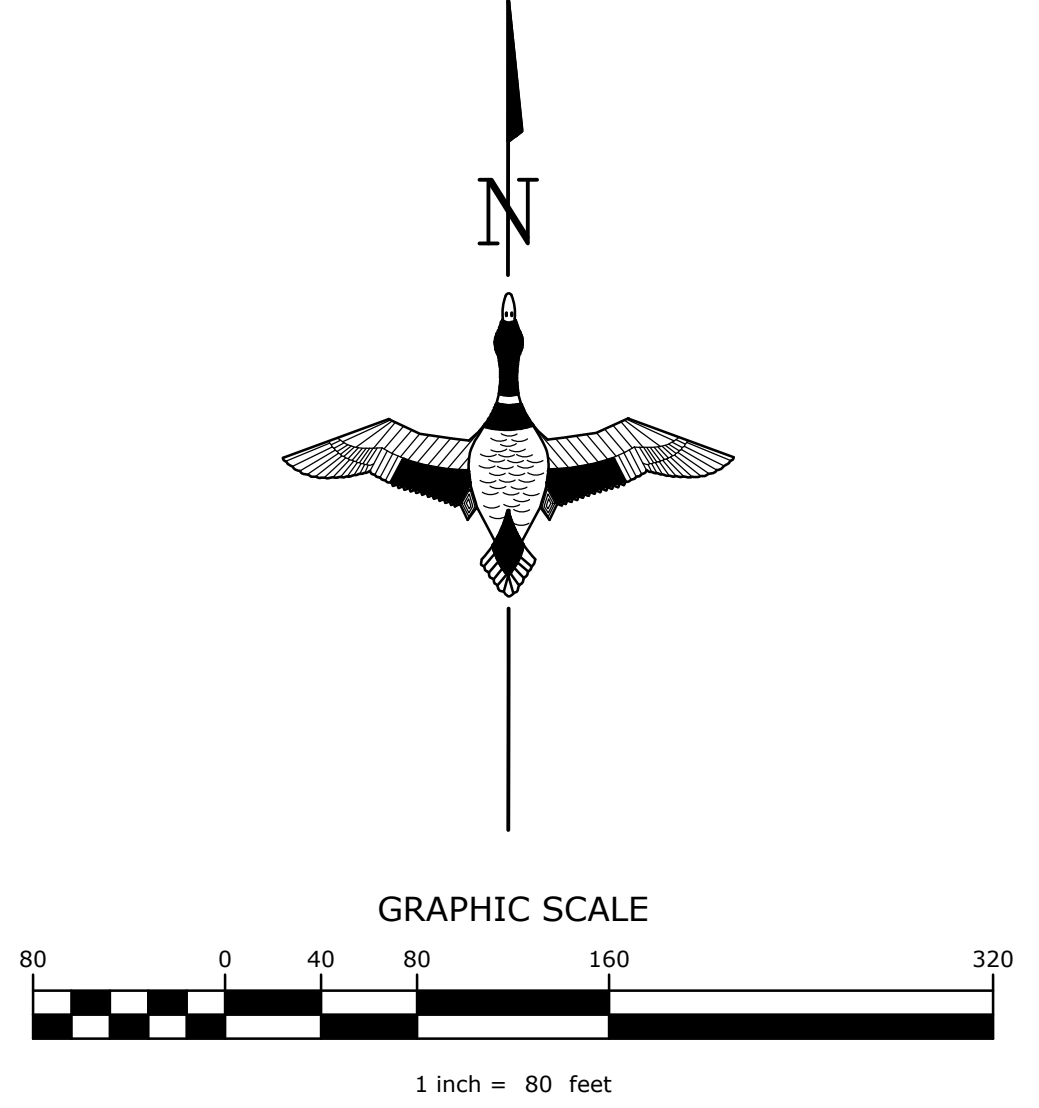
NOT FOR CONSTRUCTION

NOTICE: CONSTRUCTION SITE SAFETY IS THE SOLE RESPONSIBILITY OF THE CONTRACTOR. DUCKS UNLIMITED, INC. SHALL NOT ASSUME ANY RESPONSIBILITY FOR THE SAFETY OF THE WORK PERFORMED, PERSONS ENGAGED IN THE WORK, NEARBY STRUCTURES, OR OF OTHER PERSONS ON-SITE. THIS DRAWING, DATA AND INFORMATION IS THE PROPERTY OF DUCKS UNLIMITED, INC. AND IS NOT TO BE REPRODUCED, COPIED, OR TRANSMITTED IN ANY MANNER WITHOUT THE WRITTEN CONSENT OF DUCKS UNLIMITED, INC. DUCKS UNLIMITED, INC. MAKES NO WARRANTY, REPRESENTATION, OR GUARANTEE OF ANY KIND, EXPRESS OR IMPLIED, REGARDING THE ACCURACY, COMPLETENESS, OR RELIABILITY OF THE MATERIAL, DATA AND INFORMATION OR THE RESULTS THEREOF. THE USER SHALL BE RESPONSIBLE FOR VERIFYING THE ACCURACY OF THE MATERIAL, DATA AND INFORMATION AND FOR OBTAINING ANY NECESSARY PERMITS, APPROVALS, OR REGULATORY CLEARANCES. THE USER SHALL STAMP THE DOCUMENT AND INCLUDE THE NOTATION "ALTERED BY" FOLLOWED BY THEIR SIGNATURE, THE DATE OF SUCH ALTERATION, AND A SPECIFIC DESCRIPTION OF THE ALTERATION.

C:\Users\aschippers\Documents\Projects\IA-340-2 CREP PROJECT\POCAHONTAS - Moline C101 SITE PLAN.dwg, 1/16/2024 12:36 PM, Andrew Schippers, Seeding Plan, None



LEGEND
 STRUCTURE SEEDING (2 ACRES)
 BUFFER SEEDING (6 ACRES)



GREAT LAKES/ATLANTIC REGIONAL OFFICE
 7322 NEWMAN BOULEVARD, BUILDING 2
 DEXTER, MICHIGAN 48130
 (734) 623-2000 www.ducks.org

DUCKS UNLIMITED

SEEDING PLAN
 POC903130C
 POCAHONTAS COUNTY
 IOWA

Revision	Sheet	Revisions	Date	By
0		ISSUED FOR PERMITS	1-19-23	A.S.
1		RUPRAP TOE DETAIL	12-12-23	A.S.
2		IDALS REVIEW COMMENTS	1-15-24	A.S.

POCAHONTAS - MOLINE C101 SITE PLAN
 DESIGNED BY: A.S.
 DRAWN BY: A.S.
 SURVEYED BY: IDALS
 BIOLOGIST: M.S.

DATE:
 1-15-24
 PROJECT NUMBER:
 US-IA-340-3
 GLARO-340-3-C401

NOT FOR CONSTRUCTION