

Addendum Number: 2.0

Addendum Issue Date: March 1, 2024

Owner: State of Iowa Department of Corrections – Clarinda Correctional Facility

Project Name: Clarinda Correctional Facility – Kitchen & Laundry

RFB Number: 922300-03

Containing: 4 Pages; 3 Drawings; 0 Specifications

*This addendum amends the drawings and specifications of the above reference project and is hereby incorporated into the contract documents as part thereof. Bidders must acknowledge receipt of this Addendum in the space provided on the Bid Form. **FAILURE TO DO SO MAY SUBJECT BIDDER TO DISQUALIFICATION.***

Drawings:

General: NA

Life Safety: NA

Civil: NA

Structural: NA

Architectural:

Item No. 1. A5.2 – WALL SECTIONS

Reference view 2 - WALL SECTION @ DRYER CHASE

1. **REVISE** note reading “3” RIGID INSULATION” to read “R-16 RIGID INSULATION”
2. **ADD** 1 layer of 5/8” moisture resistant type X gypsum board over the R-30 RIGID INSULATION at the dryer chase cap only

Foodservice Equipment:

Item No. 2. FS103 – FOODSERVICE EQUIPMENT PLAN AND SCHEDULE - AREA 3

Reference Foodservice Equipment Schedule – Area C

3. **REVISE** schedule as shown in updated attached sheet

Item No. 3. FS103 – FOODSERVICE EQUIPMENT PLAN AND SCHEDULE - AREA 3

Reference Foodservice Equipment Plan – Area 3

1. **REVISE** drawings to reflect a 108” x 30” Mobile Workcounter.

Item No. 4. FS200 – FOODSERVICE EQUIPMENT ELEVATIONS AND SECTIONS

Reference Foodservice Elevations views 3, 4, 5 and 6.

1. **REVISE** drawings to include additional details for fabrication for (2) Item 77 – Workcounter

Item No. 5. FSE100 – FOODSERVICE EQUIPMENT ELECTRICAL SCHEDULE & DETAILS

Reference Foodservice Equipment Electrical Schedule

1. **REVISE** schedule as shown in updated attached sheet

Fire Protection: NA

Plumbing: NA

Mechanical: NA

Electrical:

- Item No. 6. E1.4 – LEVEL 01 PLAN – AREA A – POWER
E1.5 – LEVEL 02 PLAN – AREA A – POWER
E1.6 – LEVEL 01 PLAN – AREA B – POWER
E1.7 – LEVEL 02 PLAN – AREA B – POWER
E1.8 – LEVEL 01 PLAN – AREA A – SYSTEMS
E1.9 – LEVEL 01 PLAN – AREA B – SYSTEMS
E1.10 – LEVEL 02 PLAN – AREA A – SYSTEMS
E1.11 – LEVEL 02 PLAN – AREA B – SYSTEMS

1. **ADD** Bid Alternate Note block to say the following:

ALTERNATE NO. 2:

BASE BID CONDITION:

PROVIDE KITCHEN EQUIPMENT AS NOTED IN FSE DOCUMENTS WITH THE EXCEPTION OF NOTED ALTERNATE EQUIPMENT BUT DO NOT PROVIDE INSTALLATION OR HOOKUP SERVICES.

ALTERNATE BID CONDITION:

PROVIDE ALL NOTED ALTERNATE BAKERY EQUIPMENT AND FULL INSTALLATION OF ALL EQUIPMENT.

ALTERNATE NO. 3:

BASE BID CONDITION:

PROVIDE KITCHEN EQUIPMENT AS NOTED IN FSE DOCUMENTS WITH THE EXCEPTION OF NOTED ALTERNATE EQUIPMENT. PROVIDE ALL ROUGH-INS TO NOTED ALTERNATE EQUIPMENT BUT DO NOT PROVIDE INSTALLATION OR HOOKUP SERVICES.

ALTERNATE BID CONDITION:

PROVIDE ALL NOTED ALTERNATE NO. 3 EQUIPMENT AND FULL INSTALLATION OF ALL EQUIPMENT.

Item No. 7. E6.1 – ELECTRICAL SCHEDULES

1. **REVISE** Transfer Switch Schedule type GCC-1 from 100A to 60A.

Item No. 8. E6.3 – ELECTRICAL SCHEDULES

1. **REVISE** Luminaire Schedule fixture F4 approved manufacturers to include “Cooper LD6C”.
2. **REVISE** Luminaire Schedule fixture F4A approved manufacturers to include “Cooper LD6C”.
3. **REVISE** Luminaire Schedule fixture W4 approved manufacturers to include “Cooper McGraw-Edison IST”.

Technology: NA

Specifications:

Item No. 9. Section 07 2100 – THERMAL INSULATION

Reference 2.01 APPLICATIONS

1. **REVISE** item C to read as follows: *Insulation inside prefabricated Concrete Wall Panels: Integral Insulation (RI-2)*

Reference 2.02 FOAM BOARD INSULATION MATERIALS

2. **REVISE** item A.1 to read as follows: *Type and Compressive Resistance: Type IV, 25 psi (173 kPa), minimum.*

3. **REVISE** items 7 a,b,&c as follows:

- a. *DuPont de Nemours, Inc; Styrofoam Brand Square Edge: building.dupont.com/#sle.*
- b. *Kingspan Insulation LLC; GreenGuard XPS Type IV, 25 psi: www.kingspan.com/#sle.*
- c. *Owens Corning Corporation; FOAMULAR Type 250 Extruded Polystyrene (XPS) Insulation: www.ocbuildingspec.com/#sle.*

3. **ADD** item C. as follows:

C. Integral Insulation (RI-2): Rigid expanded (EPS), extruded (XPS), or polyisocyanurate (ISO) insulation.

1. Design and construct panels to maintain overall R-value of 16 minimum, with less than one percent change due to penetrations and connections, when calculated in accordance with ASHRAE 90.1, isothermal planes method.
2. Compressive Resistance: 25 psi.
3. Connectors: Non-conducting connectors designed and manufactured for use in insulated composite panels.

4. **ADD** item D. as follows:

- a. Extruded Polystyrene (XPS)-3 Board Insulation: Comply with ASTM C578 with either natural skin or cut cell surfaces.
 - i. Type and Compressive Resistance: Type IV, 25 psi (276 kPa), minimum.
 - ii. Flame Spread Index (FSI): Class A - 0 to 25, when tested in accordance with ASTM E84.
 - iii. Smoke Developed Index (SDI): 175 or less, when tested in accordance with ASTM E84.
 - iv. Type and Thermal Resistance, R-value: Type IV, 5.0 (0.88), minimum, per 1 inch thickness at 75 degrees F mean temperature.
 - v. Board Edges: Square.
 - vi. Type and Water Absorption: Type IV, 0.3 percent by volume, maximum, by total immersion.
 - vii. Products:
 - a. DuPont de Nemours, Inc; Styrofoam Brand Scoreboard: building.dupont.com/#sle.
 - b. Kingspan Insulation LLC; GreenGuard XPS Type IV: www.kingspan.com/#sle.
 - c. Owens Corning Corporation; FOAMULAR NGX Type 250 Next Generation Extruded: www.ocbuildingspec.com/#sle.
 - d. Substitutions: See Section 01 6000 - Product Requirements.

Section 11 4000 - FOODSERVICE EQUIPMENT

Reference Section 3.06 ITEM SPECIFICATIONS

REVISE as follows:

Item No. 10. 109 Change to:

Food Processor **(BY OWNER)**

Item No. 11. 141 Change to:

MOBILE WORKCOUNTER (ADD ALTERNATE – ALT 3)

Two

Advance Tabco Model SS-309 or equal by Eagle Group or Metro Industries *R103

“Substitutions”: As approved by Architect prior to bid”

Features: Length and width per Plan; 36" high; 14 gauge stainless steel top and understructure; stainless steel welded undershelf; stainless steel legs and underbracing; rolled rim edge; paint on sound deadening top; four 5" diameter swivel casters, all with brakes; correctional package tamper proof hardware

Item No. 12. Section 26 3600 – TRANSFER SWITCH

Reference - Article 2.02 PORTABLE GENERATOR (GCC-#)

1. **REVISE** paragraph B to read: Pad mount, powder coat painted NEMA 3R housing with lockable door, 60 amps, 600 volt. Color-coded cam-lock connectors. Submit product data and dimensioned drawings. Color selection by Architect.

Product Approvals:

The following manufacturers are approved as substitute products of the named Base Bid manufacturer(s). Approval is contingent upon manufacturers fulfilling all specification requirements, tangible and intangible, equally as well as specified product.

References/Item

07 2100 Thermal insulation

11 1900 Detention Security Equipment 1.07.A.1

E6.3 /Type F4

E6.3 /Type F4A

E6.3 /Type W1

Manufacturer/Supplier

Atlas; EnergyShield XR

Southern Folger Contracting, Inc.

Portfolio LD6C series

Portfolio LD6C series

McGraw-Edison IST series

Bids are Due: March 7, 2024 / 2:00 PM local time to [IMPACS Electronic Procurement System](#).

END OF ADDENDUM

Issued By:

FARNSWORTH GROUP, INC.

Kelsey Vetter, AIA

Project Architect

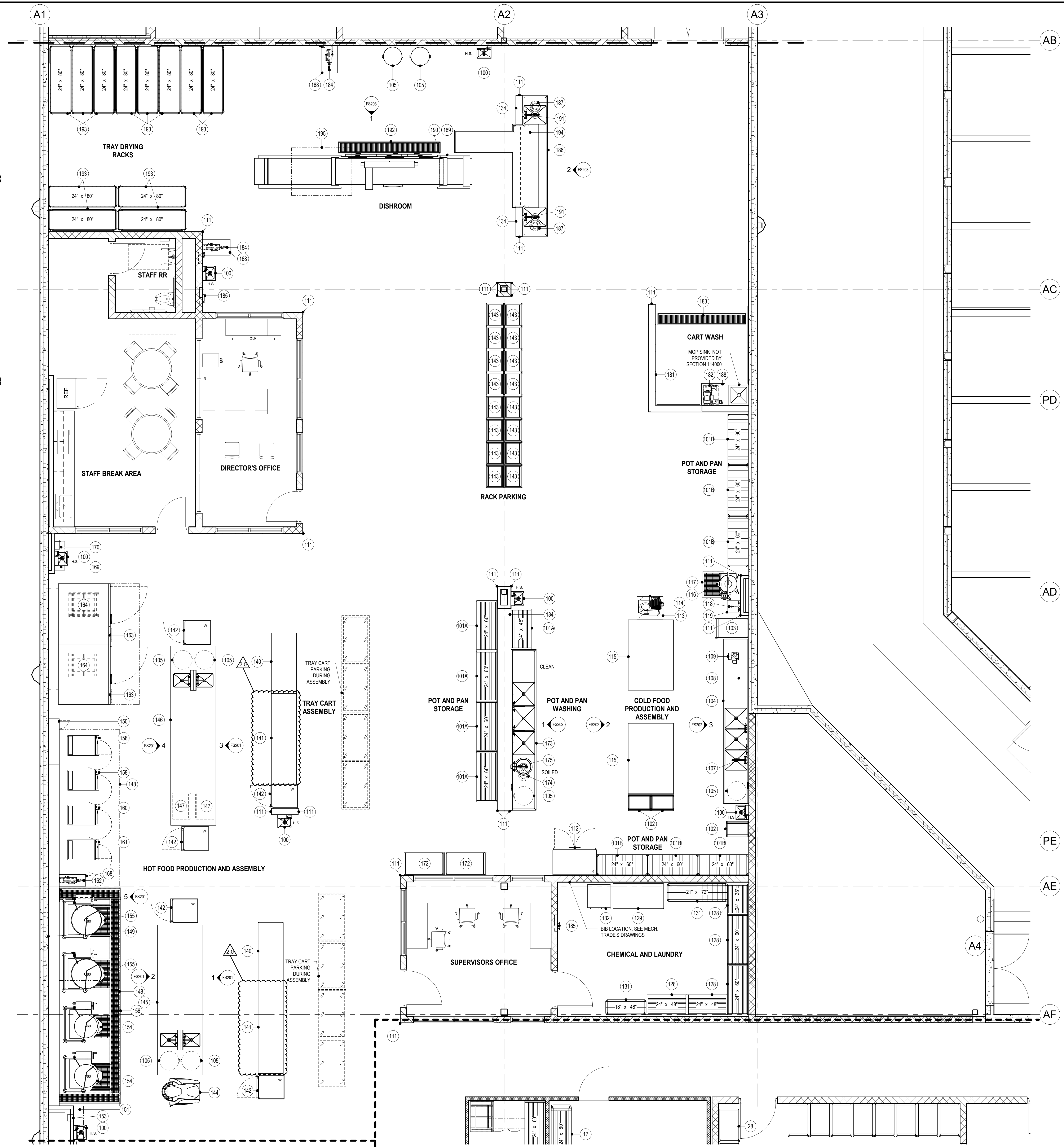
Attachments:

Drawings: FS103, FS200, FSE100

Specifications: NA

Other: Approved Substitution Request Forms – 07 2100, 11 1900

FOODSERVICE EQUIPMENT SCHEDULE - AREA C			
ITEM #	QTY	DESCRIPTION	REMARKS
100	7	HAND SINK	
101A	5	PAN STORAGE SHELVING	
101B	6	PAN STORAGE SHELVING	BY OWNER
102	3	MOBILE LUG RACK	
103	1	UTILITY CART	BY OWNER
104	1	WORKCOUNTER W/SINKS	
105	8	MOBILE TRASH BIN	BY OWNER
106	1	OPEN NUMBER	
107	1	SPRAY RINSE	
108	1	WALL SHELF	
109	1	FOOD PROCESSOR	BY OWNER
110	1	OPEN NUMBER	
111	21	STAINLESS STEEL CORNER GUARD	
112	1	REACH-IN REFRIGERATOR, 2-SEC.	ADD ALTERNATE - ALT 3
113	1	MOBILE EQUIPMENT STAND	
114	1	SLICER	ADD ALTERNATE - ALT 3
115	2	DOUBLE WIDE WORKTABLE	
116	1	HORIZONTAL CUTTER/MIXER	ADD ALTERNATE - ALT 2
117	1	FLOOR TROUGH	
118	1	HOSE STATION	
119	1	HOSE STATION SECURITY CABINET	
120-127	1	OPEN NUMBER	
128	5	CHEMICAL STORAGE SHELVING	
129	1	MOBILE WORKTABLE	
130	1	OPEN NUMBER	
131	2	CHEMICAL STORAGE SHELVING	BY OWNER
132	1	STACKED WASHER/DRYER	
133	1	OPEN NUMBER	
134	3	STAINLESS STEEL WALL CAP	
135-139	1	OPEN NUMBER	
140	2	MOBILE WORKTABLE	
141	2	MOBILE WORKTABLE	ADD ALTERNATE - ALT 3
142	5	MOBILE WARMING CABINET	
143	16	MOBILE RACK	BY OWNER
144	1	80 QUART MIXER	ADD ALTERNATE - ALT 3
145	1	WORKCOUNTER W/SINKS	
146	1	WORKCOUNTER W/SINKS	
147	2	SHEET PAN DOLLY	
148	1	EXHAUST HOOD (TYPE I)	
149	1	STAINLESS STEEL WALL PANEL	
150	1	UTILITY DISTRIBUTION SYSTEM	
151	1	FIRE PROTECTION SYSTEM	
152	1	OPEN NUMBER	
153	1	DEMAND CONTROL VENTILATION SYSTEM	
154	2	60 GALLON KETTLE	
155	2	80 GALLON KETTLE	
156	1	FLOOR TROUGH	
157	1	OPEN NUMBER	
158	2	STEAMER, 2-SEC.	ADD ALTERNATE - ALT 3
159	1	OPEN NUMBER	
160	1	STEAMER, 2-SEC.	ADD ALTERNATE - ALT 3
161	1	STEAMER, 2-SEC.	
162	1	HOSE REEL	
163	2	RACK OVEN, 2-SEC.	
164	2	OVEN RACK DOUBLE	
165-167	1	OPEN NUMBER	
168	3	HOSE REEL SECURITY CABINET	
169	1	FIRE PROTECTION SYSTEM	
170	1	FIRE PROTECTION SYSTEM	
171	1	OPEN NUMBER	
172	2	POT AND PAN CART	
173	1	POT & PAN SINK	
174	1	DISPOSER	
175	1	SPRAY RINSE	
176-180	1	OPEN NUMBER	
181	1	CART WASH STAINLESS STEEL WALL PANEL	
182	1	HOSE STATION	
183	1	FLOOR TROUGH	
184	2	HOSE REEL	
185	2	EYE/FACE WASH STATION	
186	1	SOILED DISHTABLE	
187	2	DISPOSER	
188	1	HOSE STATION SECURITY CABINET	
189	1	FLIGHT-TYPE DISHMACHINE W/DRYER	
190	1	EXHAUST DUCT RISER	
191	2	SPRAY RINSE	
192	1	FLOOR TROUGH	
193	12	DRYING RACK	BY OWNER
194	1	FLOOR TROUGH	
195	1	CONDENSATE HOOD	



1 FOODSERVICE EQUIPMENT PLAN - AREA 3
1/4" = 1'-0"



Farnsworth GROUP
14225 UNIVERSITY AVENUE, SUITE 110
WALKEE, IOWA 50263
(515) 225-3469 / info@f-w.com

www.f-w.com
Engineers | Architects | Surveyors | Scientists

RIPPE ASSOCIATES
FOODSERVICE DESIGN + CONSULTING

kpff

IMEG

Bishop Engineering

ISSUE: # DATE: DESCRIPTION:
2.0 03/01/2024 ADDENDUM 2.0

BID SET

PROJECT:
STATE OF IOWA DEPARTMENT OF CORRECTIONS

CLARINDA CORRECTIONAL FACILITY - KITCHEN & LAUNDRY ADDITION

2000 N 16TH ST, CLARINDA, IA 51632

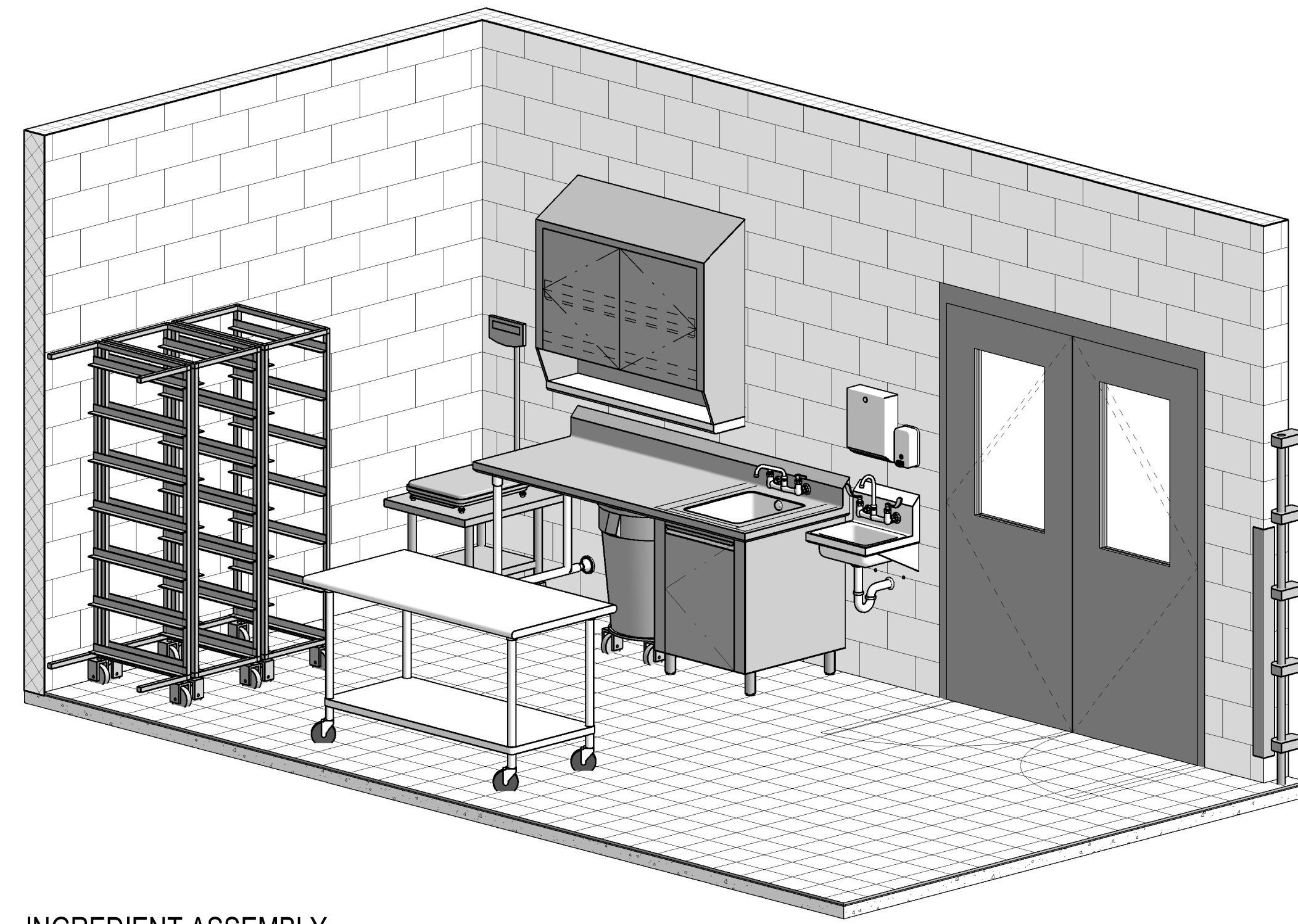
DATE: 02/09/2024
DESIGNED: EG/TP
DRAWN: MM/BB
REVIEWED: EG/RB

SHEET TITLE:
FOODSERVICE EQUIPMENT PLAN AND SCHEDULE - AREA 3

SHEET NUMBER:

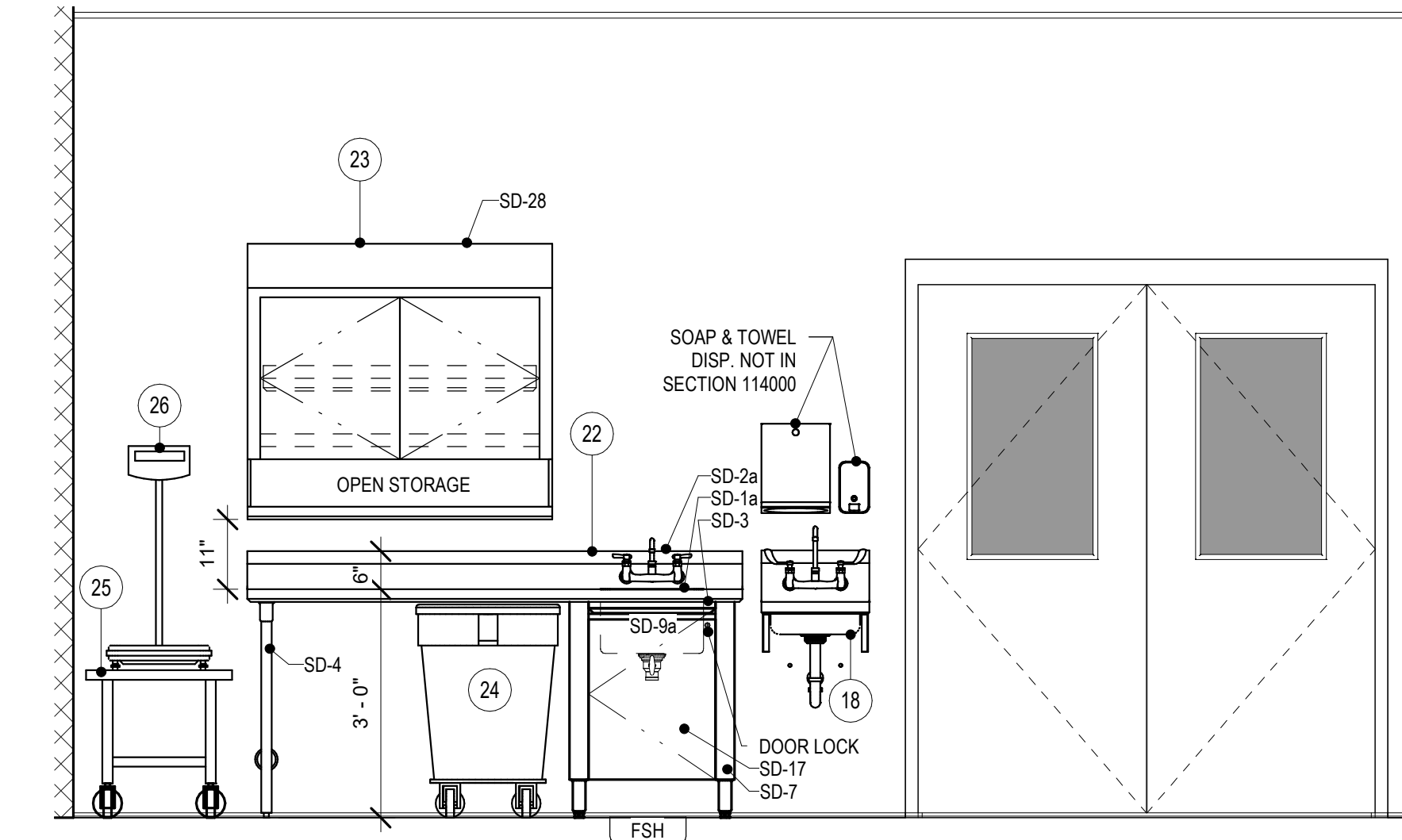
FS103

PROJECT NO.: 0240202.00
RFB922300-03

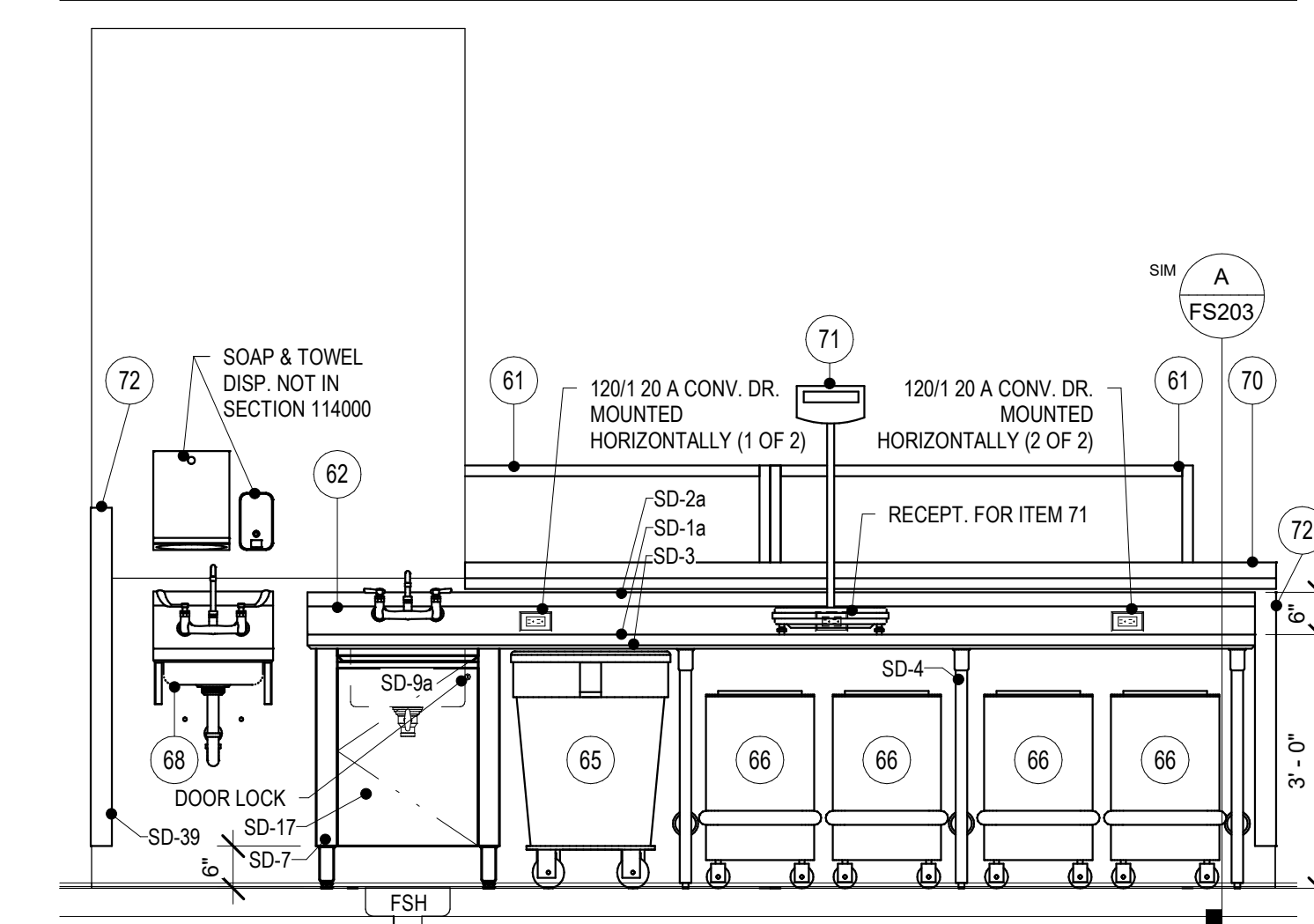


INGREDIENT ASSEMBLY

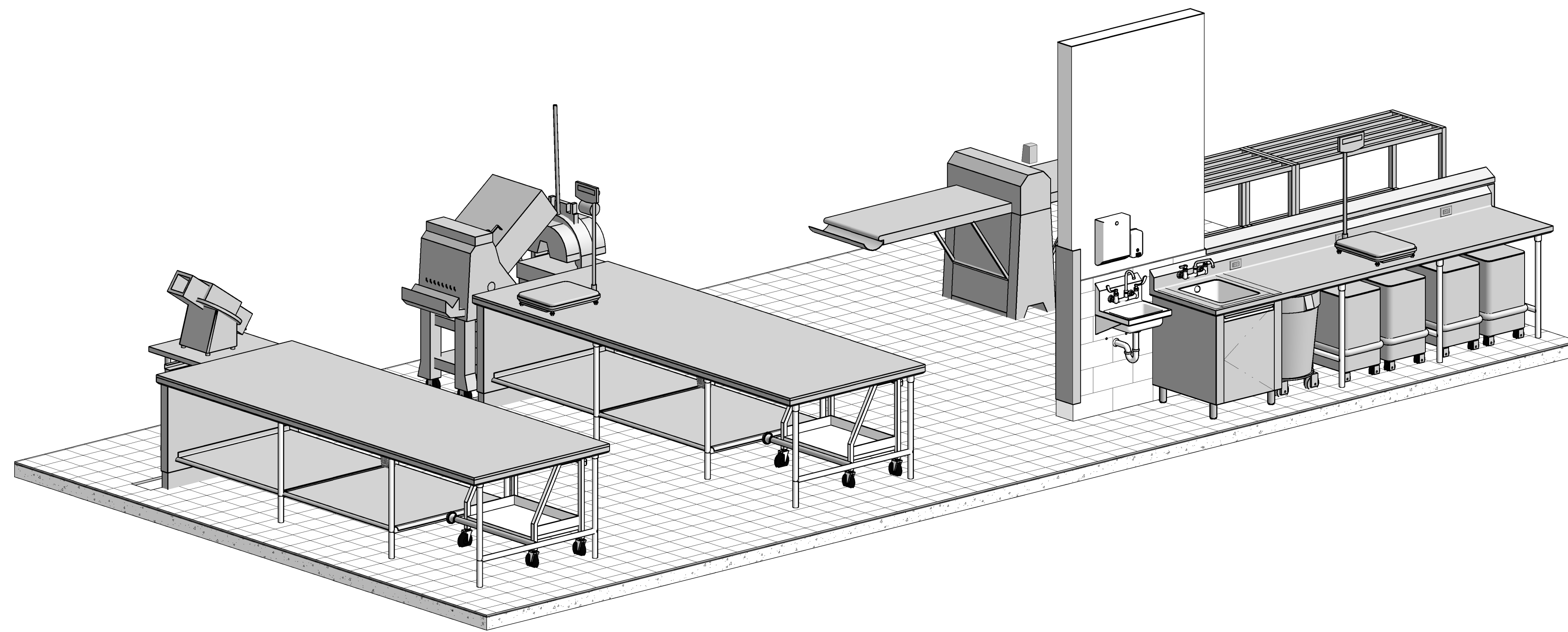
RRA KEYNOTE LEGEND	
KEYNOTE	KEYNOTE TEXT
SD-1a	TABLE EDGE - TURN DOWN
SD-2a	BACKSPLASH - AT WALL
SD-3	FRAMEWORK
SD-4	TABLE & SINK LEGS
SD-6	REMOVABLE UNDERSHELF
SD-7	CABINET CONSTRUCTION
SD-9a	GENERAL USE 16"x20"x10" DP.
SD-17	HINGED SOLID DOOR - INTEGRAL PULL
SD-28	WALL CABINET W/SHELF
SD-30	UTILITY CURB
SD-39	STAINLESS STEEL CORNER GUARD
SD-70	SHEET PAN DOLLY



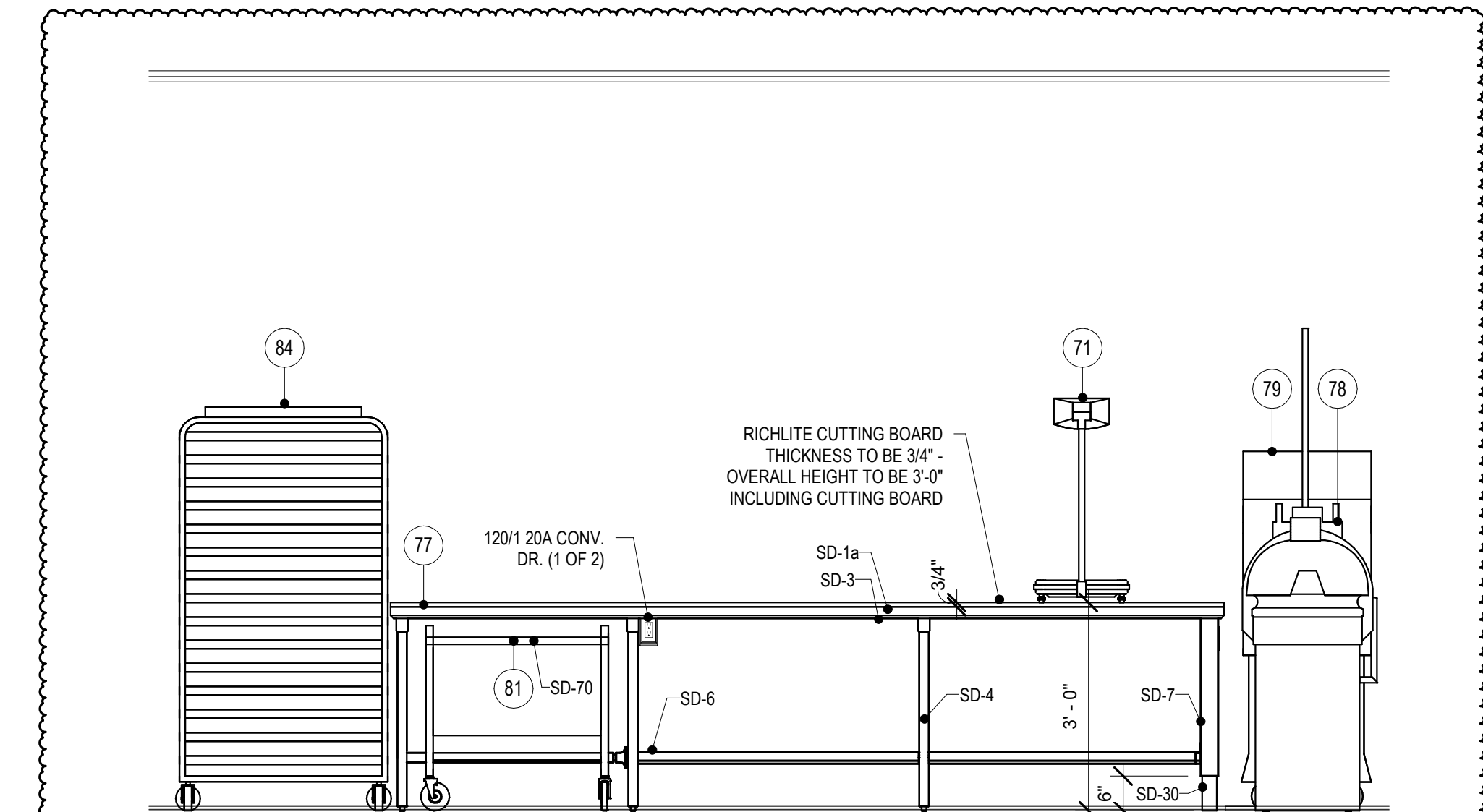
1 ITEM 22 - WORKCOUNTER W/ SINK
1/2" = 1'-0"



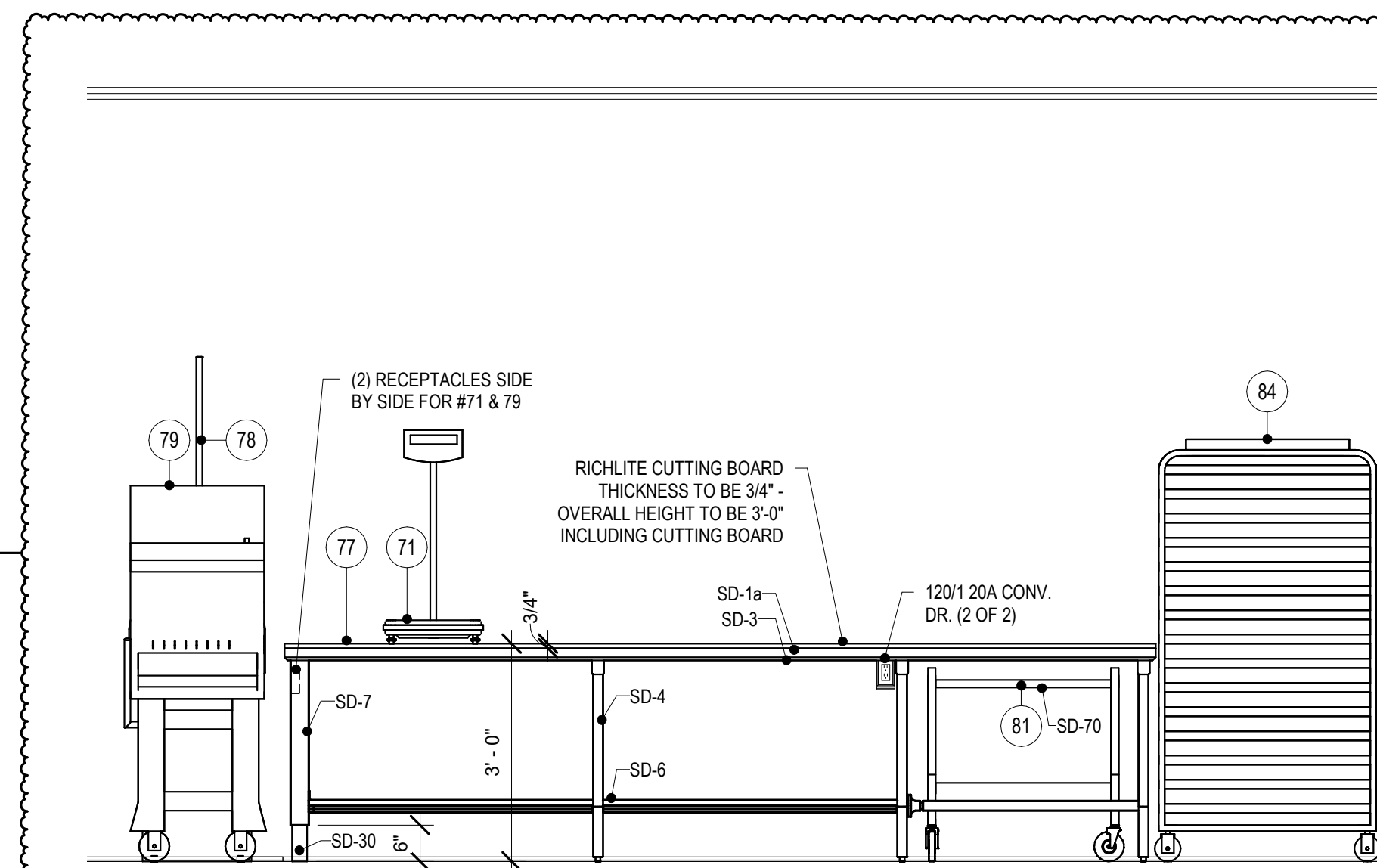
2 ITEM 62 - WORKCOUNTER W/ SINK
1/2" = 1'-0"



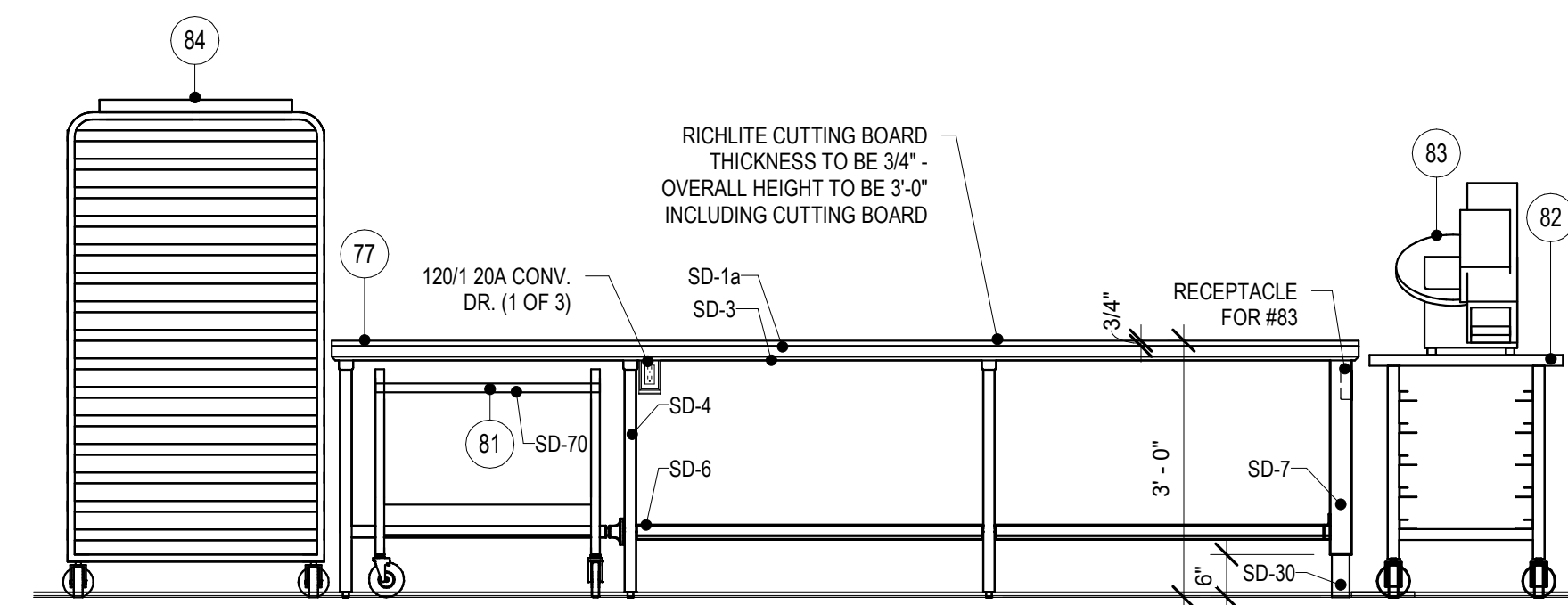
BAKERY PREP



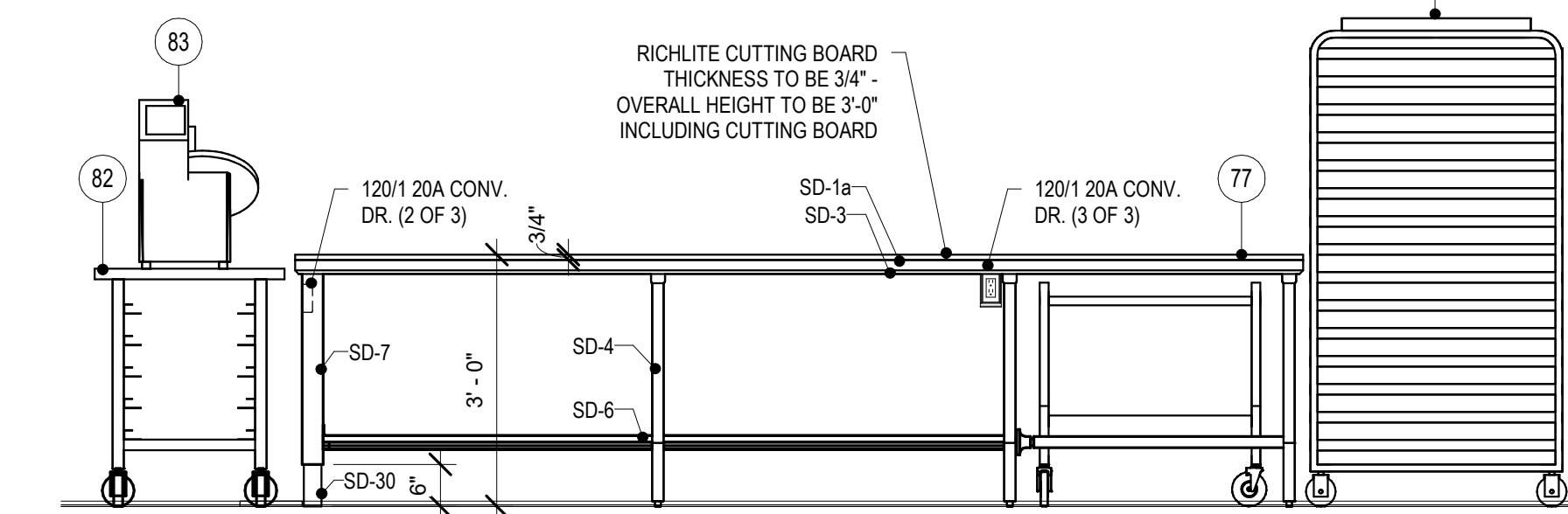
3 ITEM 77 - WORKCOUNTER 1
1/2" = 1'-0"



4 ITEM 77 - WORKCOUNTER 2
1/2" = 1'-0"



5 ITEM 77 - WORKCOUNTER 3
1/2" = 1'-0"



6 ITEM 77 - WORKCOUNTER 4
1/2" = 1'-0"

FOODSERVICE EQUIPMENT ELECTRICAL SCHEDULE										
ITEM #	DESCRIPTION	VOLTS	PHASE	AMPS	WATTS	HP	CONN. TYPE	RI HEIGHT	REMARKS	
7A	WALK-IN REFRIGERATOR/FREEZER COMPLEX	120 V	1	20.0 A			DIRECT	114"	DFA / NOTE W / SEE DETAIL SD-191	
7B	FREEZER FLOOR HEAT	A 208 V	1				DIRECT	48"	DFA / COOK'S ISSUANCE FLOOR HEAT / NOTE W / SEE DETAIL SD-188 / 30 AMP BREAKER / (1) CIRCUIT	
7B	FREEZER FLOOR HEAT	B 208 V	1				DIRECT	48"	DFA / MAIN FREEZER FLOOR HEAT / NOTE W / SEE DETAIL SD-188 / 30 AMP BREAKER / (3) CIRCUITS ON ONE CONTACTOR	
8A	RACKED REFRIGERATION SYSTEM	A 208 V	3	138.9 A			DIRECT	0"	NOTE D & W / MAX FUSE SIZE 175.0 AMPS / MIN CIRCUIT AMPACITY 148.4 AMPS	
8B	REFRIGERATION SYSTEM COIL - PRODUCE REFRIGERATOR	B 120 V	1	1.8 A			DIRECT	96"	NOTE W / (2) COILS @ 1.8 AMPS EACH	
8C	REFRIGERATION SYSTEM COIL - MEAT & DAIRY REFRIGERATOR	C 120 V	1	1.8 A			DIRECT	96"	NOTE W / (2) COILS @ 1.8 AMPS EACH	
8D	REFRIGERATION SYSTEM COIL - TEMPERING REFRIGERATOR	D 208 V	1	13.7 A			DIRECT	96"	NOTE W	
8E	FREEZER SYSTEM COIL - MAIN FREEZER	E 208 V	1	22.8 A			DIRECT	96"	NOTE W / (2) COILS @ 22.8 AMPS EACH	
8F	FREEZER SYSTEM COIL - BAKERY FREEZER	F 208 V	1	9.1 A			DIRECT	96"	NOTE W	
8G	REFRIGERATION SYSTEM COIL - BAKERY REFRIGERATOR	G 120 V	1	1.8 A			DIRECT	96"	NOTE W	
11	HEATED AIR CURTAIN	A 480 V	3	22.0 A		1/2, 1/2	DIRECT	96"	PROVIDE 30 AMP CIRCUIT	
11	HEATED AIR CURTAIN	B 480 V	3	28.3 A		1/2, 1/2	DIRECT	96"	PROVIDE 35 AMP CIRCUIT	
12	AIR CURTAIN	120 V	1	3.4 A		1/5, 1/5	DIRECT	96"	PROVIDE 15 AMP CIRCUIT	
13	MANUAL SLIDING DOOR (FRZ)	120 V	1	3.0 A			DIRECT	86"	ELECTRICAL TRADES TO PROVIDE AND INSTALL FROSTPROOF DISCONNECT SWITCH / FINAL CONNECTIONS BY ELECTRICAL TRADES	
26	BENCH SCALE	120 V	1				RECEPT.	18"	AC ADAPTER W/INTERNAL BATTERY	
34	FOOD CUTTER	120 V	1	13.0 A		1	RECEPT.	60"	INTERCHANGEABLE PLUG IN LOCATION W/ITEM #114 / ADD ALTERNATE / ELECTRICAL TRADES TO ROUGH IN AND CAP AS NEEDED	
40	MOBILE HOT/COLD TRANSPORT CART	120 V	1				RECEPT.	0"	VFY. UTILITIES W/OWNER / (13) CIRCUITS SERVICED THRU #41A & B	
41A	UTILITY DISTRIBUTION SYSTEM	120 V	1				DIRECT	126"	(6) 20.0 AMP CIRCUITS TO SERVICE (6) #40 / FSEC TO PREWIRE RECEPTACLES IN UDS / FINAL CONNECTIONS BY ELECTRICAL TRADES / SEE SHEET FSE101	
41B	UTILITY DISTRIBUTION SYSTEM	120 V	1				DIRECT	126"	(7) 20.0 AMP CIRCUITS TO SERVICE (7) #40 / FSEC TO PREWIRE RECEPTACLES IN UDS / FINAL CONNECTIONS BY ELECTRICAL TRADES / SEE SHEET FSE102	
62	WORKCOUNTER W/SINK	120 V	1				DIRECT	10"	NOTE A / STUB UP THRU ADJACENT WALL / (3) 20.0 AMP CIRCUITS TO SERVICE (1) #71 & (2) CONV. DRS	
63	140 QUART MIXER	208 V	3	14.8 A		5	DIRECT	60"	ADD ALTERNATE / ELECTRICAL TRADES TO ROUGH-IN AND CAP AS NEEDED	
64	WATER METER W/TEMPERATURE RANGE	120 V	1	5.0 A			RECEPT.	54"	ADD ALTERNATE / ELECTRICAL TRADES TO ROUGH-IN AND CAP AS NEEDED	
67	SPIRAL MIXER	208 V	3	32.0 A		15	DIRECT	48"	ADD ALTERNATE / ELECTRICAL TRADES TO ROUGH-IN AND CAP AS NEEDED	
69	SHEETER	120 V	1	8.3 A			RECEPT.	60"	ADD ALTERNATE / ELECTRICAL TRADES TO ROUGH-IN AND CAP AS NEEDED	
71	DIGITAL BENCH SCALE	A 120 V	1				DUPLEX	0"	AC ADAPTER W/INTERNAL BATTERY	
71	DIGITAL BENCH SCALE	B 120 V	1				DUPLEX	0"	SERVICED THRU #77A / ADD ALTERNATE / ELECTRICAL TRADES TO ROUGH-IN AND CAP AS NEEDED / AC ADAPTER W/INTERNAL BATTERY	
74	ROLL-IN PROOFER, 2 DOUBLE RACKS	208 V	3		5000 W		DIRECT	90"	NEUTRAL WIRE CIRCUITRY NEEDED TO PROVIDE 120V CONTROL / ADD ALTERNATE / ELECTRICAL TRADES TO ROUGH-IN AND CAP AS NEEDED	
77	BAKERY WORKCOUNTER W/RICHLITE TOP	A 120 V	1				DIRECT	10"	NOTE A / STUB UP THRU CURB / (4) 20.0 AMP CIRCUITS TO SERVICE (2) CONV. DRS & #71B & 79	
77	BAKERY WORKCOUNTER W/RICHLITE TOP	AA 120 V	1				DIRECT	10"	NOTE A / STUB UP THRU CURB / (4) 20.0 AMP CIRCUITS TO SERVICE (3) CONV. DRS & (1) #83	
77	BAKERY WORKCOUNTER W/RICHLITE TOP	B 208 V	3				DIRECT	10"	NOTE A / STUB UP THRU CURB / (1) 20.0 AMP CIRCUIT TO SERVICE #78	
78	DIVIDER ROUNDNER	208 V	3	10.0 A		3/4	DIRECT	0"	SERVICED THRU #77B / ADD ALTERNATE / ELECTRICAL TRADES TO ROUGH-IN AND CAP AS NEEDED	
79	BREAD SLICER	120 V	1	7.0 A		1/2	RECEPT.	0"	SERVICED THRU #77A / ADD ALTERNATE / ELECTRICAL TRADES TO ROUGH-IN AND CAP AS NEEDED	
83	BUN SLICER	120 V	1	6.8 A	816 W	1/3	RECEPT.	0"	SERVICED THRU #77A / ADD ALTERNATE / ELECTRICAL TRADES TO ROUGH-IN AND CAP AS NEEDED	
85	ROLL-IN BLAST CHILLER	A 208 V	3	10.6 A	3400 W		DIRECT	106"		
85	BLAST CHILLER REMOTE CONDENSING UNIT	B 208 V	3	53.3 A	16400 W	9	DIRECT	0"		
87	RACK OVEN, 2-SEC.	120/208 V	3		1800 W		DIRECT	90"	NOTE I & L / ADD ALTERNATE / ELECTRICAL TRADES TO ROUGH-IN AND CAP AS NEEDED	
89	FIRE PROTECTION SYSTEM	A 120 V	1				DIRECT		NOTE J, K & L / AT CEILING / WIRING FOR CONTROLS / SEE DETAIL / TO SERVE (1) #87	
89	ELECTRIC GAS VALVE	B 120 V	1				DIRECT	120"	DFA, DEDICATED, NON-INTERRUPTED CIRCUIT	
90	FIRE PROTECTION SYSTEM	A 120 V	1				DIRECT		NOTE J, K & L / AT CEILING / WIRING FOR CONTROLS / SEE DETAIL / TO SERVE (1) #87	
90	ELECTRIC GAS VALVE	B 120 V	1				DIRECT	120"	DFA, DEDICATED, NON-INTERRUPTED CIRCUIT	
91	ICE MAKER	208 V	1	4.2 A			RECEPT.	66"		
109	FOOD PROCESSOR	120 V	1	12.0 A		1.5	RECEPT.	52"	VFY UTILITIES W/OWNER	
112	REACH-IN REFRIGERATOR, 2-SEC.	120 V	1	10.7 A		1/3	RECEPT.	84"	ADD ALTERNATE / ELECTRICAL TRADES TO ROUGH-IN AND CAP AS NEEDED	
114	SLICER	120 V	1	6.0 A	720 W	1/2	RECEPT.	60"	INTERCHANGEABLE PLUG IN LOCATION W/ITEM #34 / ADD ALTERNATE / ELECTRICAL TRADES TO ROUGH-IN AND CAP AS NEEDED	
116	HORIZONTAL CUTTER/MIXER	208 V	3	22.0 A		5	RECEPT.	18"	PROVIDE 30 AMP CIRCUIT / ADD ALTERNATE / ELECTRICAL TRADES TO ROUGH IN AND CAP AS NEEDED	
132	STACKED WASHER/DRYER	A 120 V	1				RECEPT.	30"	PROVIDE 15 AMP CIRCUIT	
132	STACKED WASHER/DRYER	B 120 V	1			1/3	RECEPT.	30"	PROVIDE 15 AMP CIRCUIT	
142	MOBILE WARMING CABINET	A 120 V	1	12.0 A	1500 W		RECEPT.	0"	(1) SERVICED THRU #145 A (2) SERVICED THRU #146	
142	MOBILE WARMING CABINET	B 120 V	1	12.0 A	1500 W		RECEPT.	30"		
144	80 QUART MIXER	208 V	3	12.0 A		3	DIRECT	0"	SERVICED THRU #145 B / ADD ALTERNATE / ELECTRICAL TRADES TO ROUGH-IN AND CAP AS NEEDED	
145	WORKCOUNTER W/SINKS	A 120 V	1				DIRECT	10"	NOTE A / STUB UP THRU CURB / (4) 20.0 AMP CIRCUITS TO SERVICE (3) CONV. DRS & (1) #142A	
145	WORKCOUNTER W/SINKS	B 208 V	3				DIRECT	10"	NOTE A / STUB UP THRU CURB / (1) 20.0 AMP CIRCUIT TO SERVICE #144	
146	WORKCOUNTER W/SINKS	120 V	1				DIRECT	10"	NOTE A / STUB UP THRU CURB / (6) 20.0 AMP CIRCUITS TO SERVICE (4) CONV. DRS & (2) #142	
148	EXHAUST HOOD (TYPE I)	A 120 V	1		400 W		DIRECT	108"	DFA / NOTE I / SEE DETAIL	
148	EXHAUST HOOD (TYPE I)	B 120 V	1		400 W		DIRECT	108"	DFA / NOTE I / SEE DETAIL	
148	EXHAUST HOOD (TYPE I)	C 120 V	1		400 W		DIRECT	108"	DFA / NOTE I / SEE DETAIL	
150	UTILITY DISTRIBUTION SYSTEM	120/208 V	3	20.0 A			DIRECT	110"	DFA / NOTE Y	
151	FIRE PROTECTION SYSTEM	A 120 V	1				DIRECT		NOTE J, K & L / AT CEILING / WIRING FOR CONTROLS / SEE DETAIL / TO SERVE #148 A, B & C	
151	ELECTRIC GAS VALVE	B 120 V	1				DIRECT	120"	DFA, DEDICATED, NON-INTERRUPTED CIRCUIT	
153	DEMAND CONTROL VENTILATION SYSTEM	120 V	1	15.0 A			DIRECT	36"	SEE DETAIL / TO SERVICE HOOD #148	
154	60 GALLON KETTLE	120 V	1	10.0 A			RECEPT.	0"	NOTE L / SERVICED THRU #150	
155	80 GALLON KETTLE	120 V	1	10.0 A			RECEPT.	0"	NOTE L / SERVICED THRU #150	
158	STEAMER, 2-SEC.	A 120 V	1	2.0 A			DIRECT	0"	NOTE L / SERVICED THRU #150 / FLEXIBLE CONDUIT / ADD ALTERNATE / ELECTRICAL TRADES TO ROUGH-IN AND CAP AS NEEDED	
160	STEAMER, 2-SEC.	A 120 V	1	2.0 A			DIRECT	0"	NOTE L / SERVICED THRU #150 / FLEXIBLE CONDUIT / ADD ALTERNATE / ELECTRICAL TRADES TO ROUGH-IN AND CAP AS NEEDED	
161	STEAMER, 2-SEC.	A 120 V	1	2.0 A			DIRECT	0"	NOTE L / SERVICED THRU #150 / FLEXIBLE CONDUIT	
163	RACK OVEN, 2-SEC.	120/208 V	3		1800 W		DIRECT	90"	NOTE I & L	
169	FIRE PROTECTION SYSTEM	A 120 V	1				DIRECT		NOTE J, K & L / AT CEILING / WIRING FOR CONTROLS / SEE DETAIL / TO SERVE (1) #163	
169	ELECTRIC GAS VALVE	B 120 V	1				DIRECT	120"	DFA, DEDICATED, NON-INTERRUPTED CIRCUIT	
170	FIRE PROTECTION SYSTEM	A 120 V	1				DIRECT		NOTE J, K & L / AT CEILING / WIRING FOR CONTROLS / SEE DETAIL / TO SERVE (1) #163	
170	ELECTRIC GAS VALVE	B 120 V	1				DIRECT	120"	DFA, DEDICATED, NON-INTERRUPTED CIRCUIT	
174	DISPOSER	208 V	3	8.8 A		3	DIRECT	18"	NOTE C / SEE DETAIL	
182	HOSE STATION	120 V	1			2	RECEPT.	84"		
187	DISPOSER	208 V	3	8.8 A		3	DIRECT	18"	NOTE C / SEE DETAIL	
189	FLIGHT-TYPE DISHMACHINE W/DRYER	A 480 V	3	86.3 A			DIRECT	80"	DFA / NOTE I	

GENERAL NOTES - ELECTRICAL

NOTE: GENERAL NOTES REFER TO GENERAL CONDITIONS. ALL CONDITIONS MAY NOT EXIST ON THIS PROJECT.

- THESE DRAWINGS ARE FOR USE BY THE PROJECT ENGINEERS IN PREPARING THEIR DRAWINGS. THESE DRAWINGS ARE INCIDENTAL TO OUR SERVICES AND MUST BE REVIEWED AND APPROVED BY A PROPERLY LICENSED DESIGN PROFESSIONAL BEFORE BEING USED FOR ANY OTHER PURPOSES. RIPPE ASSOCIATES IS NOT LICENSED AS A DESIGN PROFESSIONAL AND DOES NOT HOLD ITSELF OUT AS SUCH.
- SERVICES SHOWN ON THIS PLAN ARE EQUIPMENT REQUIREMENTS FOR FOODSERVICE EQUIPMENT ONLY. LOCATIONS, SIZES AND HEIGHTS ABOVE FINISHED FLOOR ARE APPROXIMATELY AS REQUIRED BY EQUIPMENT TO BE FURNISHED. SINCE MULTIPLE EQUIPMENT SOURCES AND FOR VALVES, FITTINGS, DISCONNECTS, ETC. WHICH WILL BE FURNISHED UNDER ELECTRICAL TRADES. FSEC IS RESPONSIBLE FOR PREPARING DIMENSIONED ROUGH-IN AND SLEVE LOCATION PLANS PER SPECIFICATIONS TO ACCOMMODATE THE EXACT EQUIPMENT BEING PROVIDED.
- THESE DRAWINGS ARE NOT TO BE USED TO ROUGH-IN AND/OR TO SET SLEEVES BY: SINCE REQUIRED ALLOWANCES MUST BE MADE FOR MULTIPLE EQUIPMENT SOURCES AND FOR VALVES, FITTINGS, DISCONNECTS, ETC. WHICH WILL BE FURNISHED UNDER ELECTRICAL TRADES. FSEC IS RESPONSIBLE FOR PREPARING DIMENSIONED ROUGH-IN AND SLEVE LOCATION PLANS PER SPECIFICATIONS TO ACCOMMODATE THE EXACT EQUIPMENT BEING PROVIDED.
- ALL 120V DUPLEX RECEPTACLES TO BE MINIMUM 20 AMP, CIRCUIT AND MOUNTED VERTICALLY, UNLESS OTHERWISE NOTED ON PLAN.
- ELECTRICAL TRADES TO PROVIDE ALL NECESSARY DISCONNECT SWITCHES FOR EQUIPMENT INSTALLED AHEAD OF EQUIPMENT CONTROL OR SWITCH.
- THE FSEC IS RESPONSIBLE FOR SETTING THE EQUIPMENT IN PLACE. FINAL CONNECTION FOR THIS EQUIPMENT IS THE RESPONSIBILITY OF THE ELECTRICAL TRADES.
- HOLES IN FOODSERVICE EQUIPMENT FOR ELECTRICAL SERVICES PROVIDED BY FSEC.
- BUILDING POWER PANEL BREAKERS SERVING FOODSERVICE EQUIPMENT SHOULD BE EQUIPPED WITH GROUND FAULT INTERRUPT PROTECTION IN ACCORDANCE WITH NATIONAL ELECTRIC CODE FOLLOWED BY MUNICIPALITY AND/OR LOCAL CODE. DO NOT PROVIDE GROUND FAULT INTERRUPT RECEPTACLES AT THE EQUIPMENT UNLESS RECEPTACLE IS READILY ACCESSIBLE WITHOUT HAVING TO MOVE EQUIPMENT OR EMPLOY A STEP LADDER.
- UTILITY CONNECTIONS SHOWN ARE THOSE REQUIRED TO SERVICE FOOD SERVICE EQUIPMENT ONLY. MECHANICAL TRADES SHOULD VERIFY WITH OWNER WHETHER ADDITIONAL UTILITIES ARE REQUIRED FOR EXISTING, FUTURE OR VENDOR FURNISHED NON-FOODSERVICE EQUIPMENT LOCATED WITHIN THE AREA SHOWN ON THIS PLAN.
- DESIGN INCOMING UTILITY SERVICES TO ACCOMMODATE 100% OF THE LOADS INDICATED. DO NOT APPLY DIVERSITY FACTOR AS ALL EQUIPMENT CAN BE OPERATING SIMULTANEOUSLY DURING PEAK SERVICE PERIODS.

SCHEDULE NOTES - ELECTRICAL

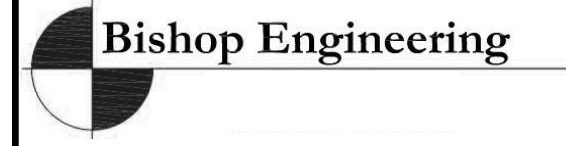
NOTE: SCHEDULE NOTES PERTAIN TO INDIVIDUAL ITEMS AS INDICATED IN THE FOODSERVICE EQUIPMENT ELECTRICAL SCHEDULE.

- THE FSEC WILL PROVIDE RECEPTACLES IN FABRICATED EQUIPMENT AS REQUIRED AND WILL PREWIRE ELECTRICAL COMPONENTS IN COUNTER TO JUNCTION BOXES IN COUNTER BASE FOR FINAL CONNECTION BY ELECTRICAL TRADES. INTERCONNECTIONS BETWEEN SECTIONS OF FABRICATED COUNTERS BY FSEC.
 - WIRE THRU TIME DELAY RELAY, SOLENOID VALVE AND CONTROL PANEL TO DISPOSER.
 - ALL REFRIGERATION SYSTEMS ARE LOCATED APPROXIMATELY WHERE SHOWN ON THE PLAN UNLESS OTHERWISE NOTED. THE FOLLOWING ITEMS ARE NOT BY THE FSEC: ROOF CURBS/CONCRETE PADS; SLEEVES & SEALED PENETRATIONS IN ROOFS/FLOORS/CEILING/WALLS. VERIFY EXACT LOCATION WITH ARCHITECT/ENGINEER.
 - ELECTRICAL TRADES TO WIRE AUTOMATIC CONTROLS OR INTERLOCK DEVICE BETWEEN EQUIPMENT AND EXHAUST FAN SO EXHAUST FAN TURNS ON ONCE EQUIPMENT IS OPERATIONAL.
 - ELECTRICAL TRADES TO INTERWIRE FIRE PROTECTION SYSTEM WITH BUILDING ALARM SYSTEM AND TO MAKE-UP AIR FAN SHUT-OFF.
 - FIRE PROTECTION SYSTEM REQUIRES 24 HOUR, EMERGENCY SEPARATE ELECTRICAL SERVICE. ELECTRICAL TRADES TO INTERWIRE FIRE PROTECTION SYSTEM WITH ELECTRICAL GAS SHUT-OFF VALVE FOR ALL COOKING EQUIPMENT BELOW HOODS. ELECTRICAL TRADES TO ALSO INTERWIRE FIRE PROTECTION SYSTEM WITH BUILDING ALARM SYSTEM.
 - ELECTRICAL TRADES TO INTERWIRE FIRE PROTECTION SYSTEM TO POWER SHUT-OFF DEVICE, SUPPLIED BY ELECTRICAL TRADES, SO THAT POWER TO ALL ELECTRIC COOKING EQUIPMENT AND CONVENIENCE RECEPTACLES BELOW HOODS IS SHUT OFF UPON ACTIVATION OF THE FIRE PROTECTION SYSTEM.
 - INTERCONNECT THIS EQUIPMENT WITH BUILDING EMERGENCY POWER.
 - WHEN A UTILITY DISTRIBUTION SYSTEM IS SPECIFIED, ELECTRICAL TRADES SHALL:
 - INSTALL MAIN SERVICE FEEDERS AND OVERCURRENT PROTECTION DEVICES. INSTALL ELECTRICAL CONDUIT AND WIRING FROM ROUGH-IN LOCATION TO RACEWAY TERMINALS IN VERTICAL CHASE BY SYSTEM MANUFACTURER.
 - CONNECT TO LISTED POWER SUPPLY CORDS AND PREWIRED FLEXIBLE CONDUIT SET, ALL PROVIDED BY SYSTEM MANUFACTURER WITH APPROPRIATE EQUIPMENT ITEMS.
 - INTERCONNECT FIRE PROTECTION SYSTEM MICROSWITCH OR RELAY TO POWER SHUT-OFF DEVICE FOR MAIN SERVICE FEEDERS.
 - PROVIDE 24 VOLT POWER SUPPLY CIRCUIT FROM CONTROL BOX IN RISER TO AUTOMATIC STEAM SHUT-OFF VALVE. SEE DETAIL.
 - SPECIAL NOTE - NO MODIFICATION OF ANY MANUFACTURED RACEWAY SHALL BE UNDERTAKEN BY ANY ENTITY WITHOUT THE EXPRESS, WRITTEN APPROVAL AND/OR SUPERVISION OF THE RACEWAY MANUFACTURER.
- THE FSEC WILL:
- INTERCONNECT FIELD JOINTS BY BOLTING BUSBAR AND/OR WIRING TOGETHER. ALL FITTINGS, BOLTS, ETC. SHALL BE PRE-FITTED AND FURNISHED BY THE SYSTEM MANUFACTURER. THE CONTROL WIRE FIELD JOINT WILL BE PROVIDED WITH A QUICK-DISCONNECT DEVICE.
 - INSPECT FOR LOOSE CONNECTIONS CAUSED BY SHIPPING AND TIGHTEN AS REQUIRED.



14225 UNIVERSITY AVENUE, SUITE 110
WALUKEE, IOWA 50253
(515) 225-3469 / info@f-w.com

www.f-w.com
Engineers | Architects | Surveyors | Scientists



ISSUE # DATE DESCRIPTION
2.0 03/01/2024 ADDENDUM 2.0

BID SET

PROJECT: STATE OF IOWA DEPARTMENT OF CORRECTIONS

CLARINDA CORRECTIONAL FACILITY - KITCHEN & LAUNDRY ADDITION

2000 N 16TH ST, CLARINDA, IA 51632

DATE: 02/09/2024

DESIGNED: EG/TP

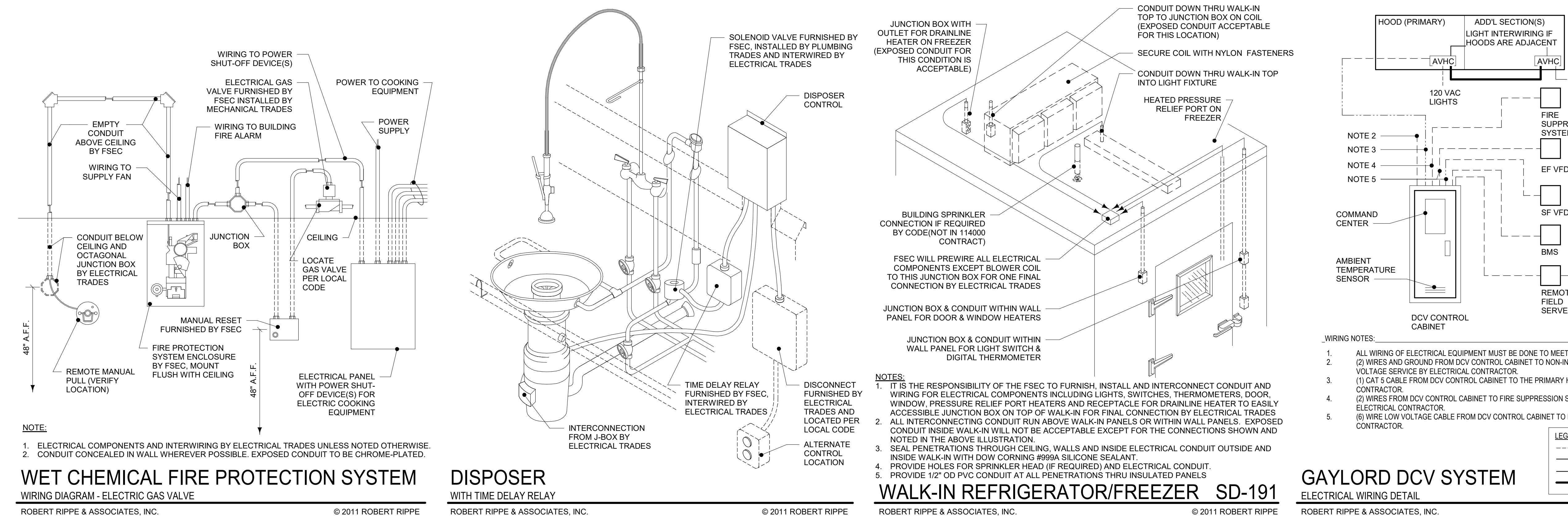
DRAWN: MM

REVIEWED: EG/RB

FOODSERVICE EQUIPMENT ELECTRICAL SCHEDULE & DETAILS

SHEET NUMBER: FSE100

PROJECT NO.: 0240202.00



SUBSTITUTION REQUEST FORM

Project: DOC Clarinda Correctional Facility Kitchen & Laundry Addition Substitution Request Number: _____
From: Matthew Hartman
To: Farnsworth Group Date: 2/15/24
The Samuels Group A/E Project Number: 0240202
Re: _____

Specification Title: Thermal Insulation Description: XPS Board Insulation
Section: 072100 Page: 2 Article/Paragraph: 2.02

Proposed Substitution: Atlas EnergyShield XR
Manufacturer: Atlas Address: East Moline, IL Phone: _____
Trade Name: EnergyShield XR Model No.: _____

History: New product 2-5 years old 5-10 yrs old More than 10 years old

Differences between proposed substitution and specified product: _____
Polyiso alternate to XPS application in below grade and perimeter of foundation

Point-by-point comparative data prepared by contractor and attached - REQUIRED BY A/E

Reason for not providing specified item: _____

Similar Installation:
Project: _____ Architect: _____
Address: _____ Owner: _____
Date Installed: _____

Proposed substitution affects other parts of Work: No Yes; explain _____

Supporting Data Attached: Drawings Product Data Samples Tests Reports _____

SUBSTITUTION REQUEST FORM

(Continued)

The Undersigned certifies:

- Proposed substitution has been fully investigated and determined to be equal or superior in all respects to specified product.
- Same warranty will be furnished for proposed substitution as for specified product.
- Same maintenance service and source of replacement parts, as applicable, is available.
- Proposed substitution will have no adverse effect on other trades and will not affect or delay progress schedule.
- Cost data as stated above is complete. Claims for additional costs related to accepted substitution which may subsequently become apparent are to be waived.
- Proposed substitution does not affect dimensions and functional clearances.
- Payment will be made for changes to building design, including A/E design, detailing, and construction costs caused by the substitution.
- Coordination, installation, and changes in the Work as necessary for accepted substitution will be complete in all respects.

Submitted by: Matthew Hartman

Signed by: 

Firm: Roofing Representatives

Address: 900 Kacina Rd Hiawatha, IA 52233

Telephone: 319-321-3272

Attachments: _____

A/E's REVIEW AND ACTION

- Substitution approved - Make submittals in accordance with Specification Section 01 3300.
- Substitution approved as noted - Make submittals in accordance with Specification Section 01 3300.
- Substitution rejected - Use specified materials.
- Substitution Request received too late - Use specified materials.

Signed by:  Date: 2.26.2024

Additional Comments: Contractor Subcontractor Supplier Manufacturer A/E _____

SUBSTITUTION REQUEST FORM

Project: DOC CCF Kitchen and Laundry Addition Clarinda, IA Substitution Request Number: _____
From: Southern Folger Contracting
To: _____ Date: 2/23/24
A/E Project Number: _____
Re: _____

Specification Title: Detention Security Equipment Description: Detention Security Equipment
Section: 111900 Page: 111900-5 Article/Paragraph: 111900/1.7/A.2

Proposed Substitution: Southern Folger Contracting, Inc.
Manufacturer: _____ Address: PO Box 58 Newcastle, CA 95658 Phone: 916-900-6593
Trade Name: Southern Folger Contracting, Inc. Model No.: _____

History: New product 2-5 years old 5-10 yrs old More than 10 years old

Differences between proposed substitution and specified product: None

Point-by-point comparative data prepared by contractor and attached - REQUIRED BY A/E See qualification package

Reason for not providing specified item: _____
Substitution request to have Southern Folger Contracting listed as approved DEC to bid project

Similar Installation: See qualification package
Project: _____ Architect: _____
Address: _____ Owner: _____
Date Installed: _____

Proposed substitution affects other parts of Work: No Yes; explain _____

See qualification package
Supporting Data Attached: Drawings Product Data Samples Tests Reports _____

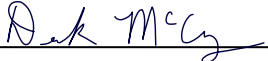
SUBSTITUTION REQUEST FORM

(Continued)

The Undersigned certifies:

- Proposed substitution has been fully investigated and determined to be equal or superior in all respects to specified product.
- Same warranty will be furnished for proposed substitution as for specified product.
- Same maintenance service and source of replacement parts, as applicable, is available.
- Proposed substitution will have no adverse effect on other trades and will not affect or delay progress schedule.
- Cost data as stated above is complete. Claims for additional costs related to accepted substitution which may subsequently become apparent are to be waived.
- Proposed substitution does not affect dimensions and functional clearances.
- Payment will be made for changes to building design, including A/E design, detailing, and construction costs caused by the substitution.
- Coordination, installation, and changes in the Work as necessary for accepted substitution will be complete in all respects.

Submitted by: Southern Folger Contracting

Signed by: 

Firm: Southern Folger Contracting

Address: PO Box 58 Newcastle, CA 95658

Telephone: 256-466-9186

Attachments: SFC qualification package

A/E's REVIEW AND ACTION

- Substitution approved - Make submittals in accordance with Specification Section 01 3300.
- Substitution approved as noted - Make submittals in accordance with Specification Section 01 3300.
- Substitution rejected - Use specified materials.
- Substitution Request received too late - Use specified materials.

Signed by:  Date: 2.26.2024

Additional Comments: Contractor Subcontractor Supplier Manufacturer A/E _____

