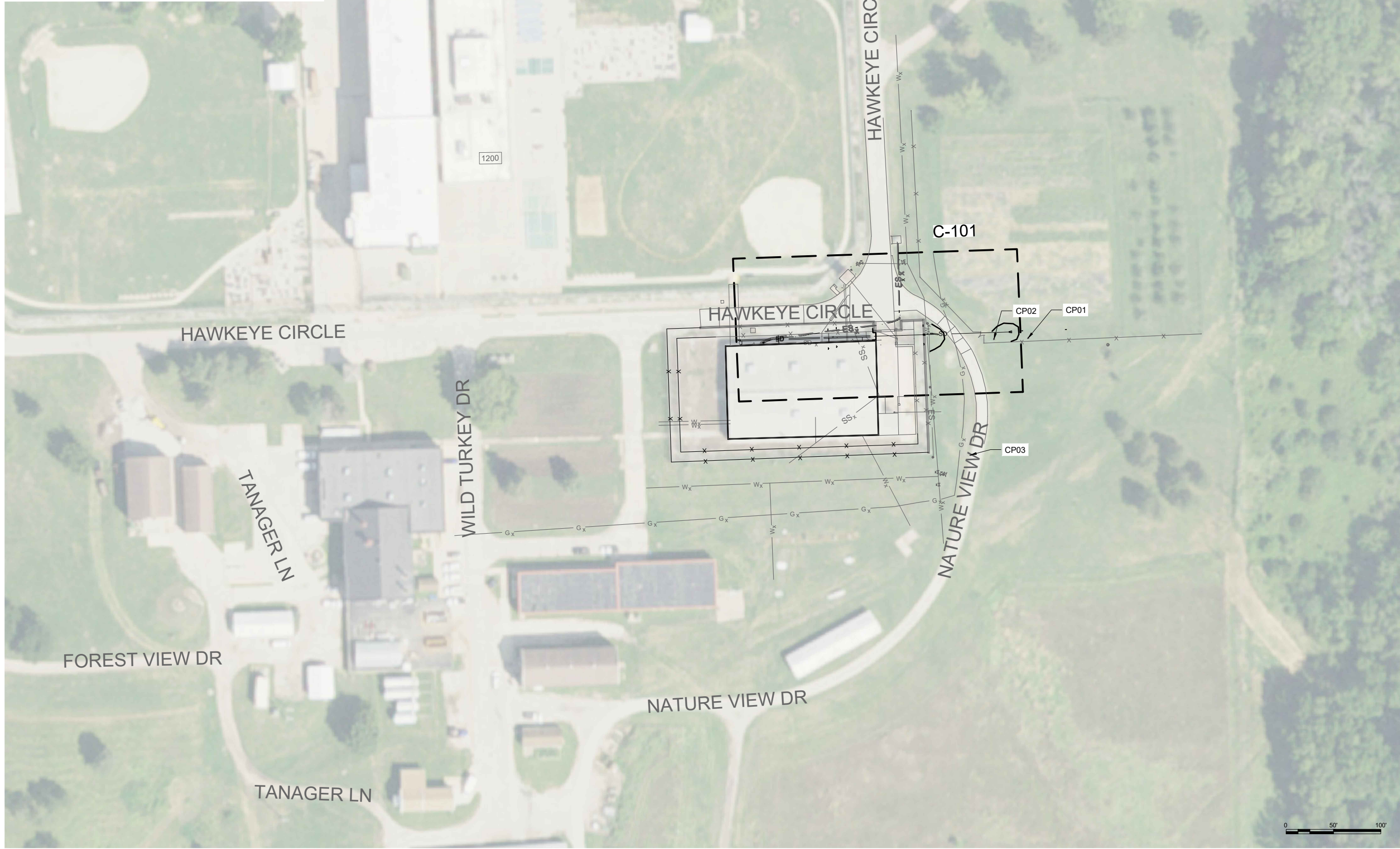


CONTROL POINTS				
POINT	N (FT)	E (FT)	ELEV. (FT)	DESCRIPTION
CP01	353,844.70	2,183,547.08	708.97	WOOD STAKE WITH TACK
CP02	353,843.71	2,183,511.02	710.43	WOOD STAKE WITH TACK
CP03	353,721.04	2,183,486.19	708.97	"X" MARK ON CONCRETE



MARK	DESCRIPTION	DATE	APPR
1	REVISED	9/6/24	BWR
0	FOR BIDS	7/26/24	BWR

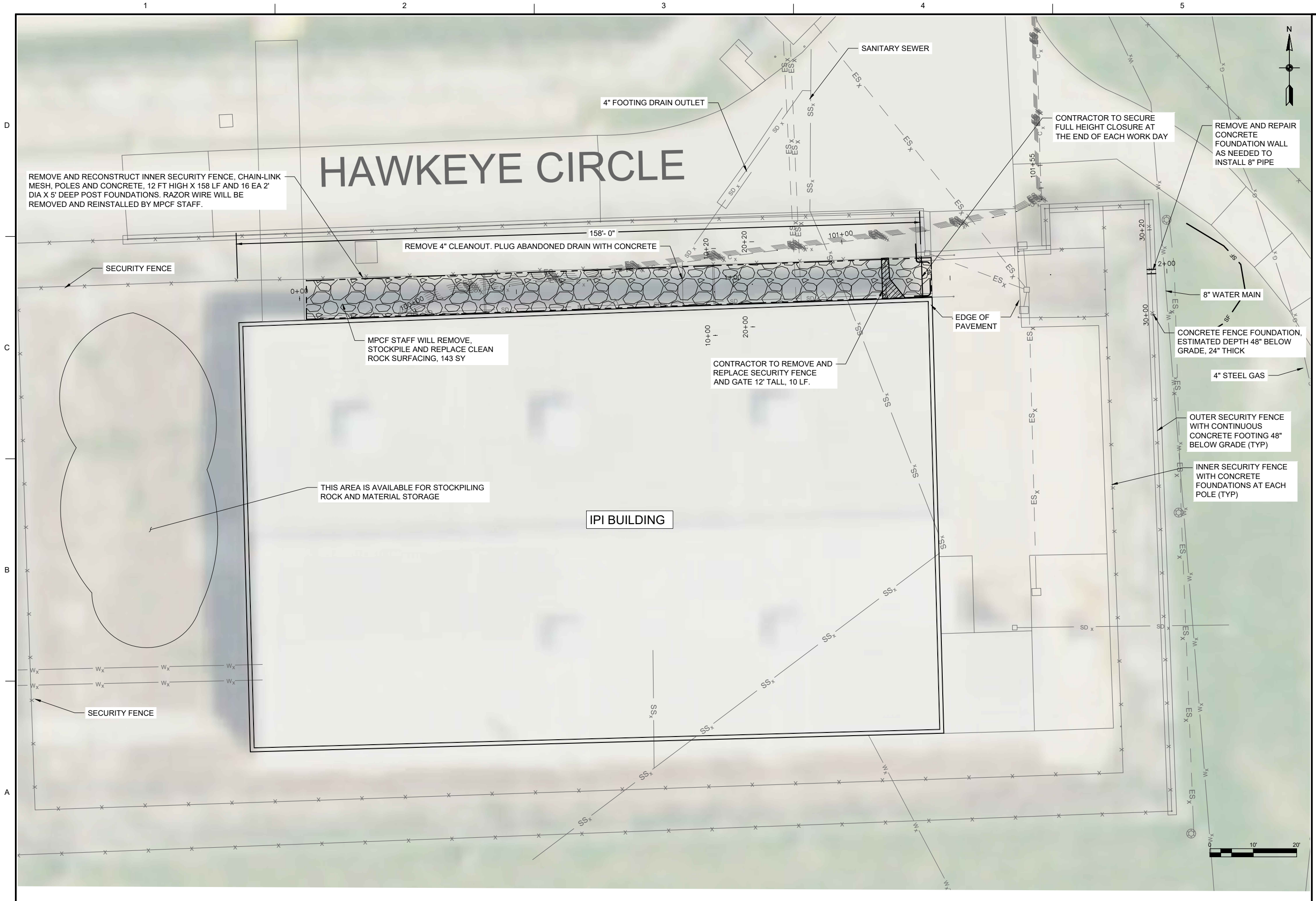
DESIGNED BY: BWR	DATE	SOLICITATION NO.:
CHKD BY: XXX		CONTRACT NO.:
SUBMITTED BY: BWR		FILE NUMBER:
PLOT SCALE:	ISSUE DATE:	FILE NAME:
SIZE: ANSI B	XX-XX-XX	

IOWA DEPARTMENT OF
ADMINISTRATIVE SERVICES
HOOPER STATE OFFICE BUILDING,
FIRST FLOOR
100 WEST WASHINGTON ST.
DES. MOBILE, IA 50319-0105

WATERSMITH ENGINEERING
1029 HERSHEY AVE
MUSCATINE, IA 52761

DOC. MPOF IPI BUILDING
STORMWATER MANAGEMENT
1200 E WASHINGTON ST
MOUNT PLEASANT, IOWA

OVERVIEW MAP
SHEET IDENTIFICATION
C-010



MARK	DESCRIPTION	DATE	APPR
1	REVISED	9/6/24	BWR
0	FOR BIDS	7/26/24	BWR

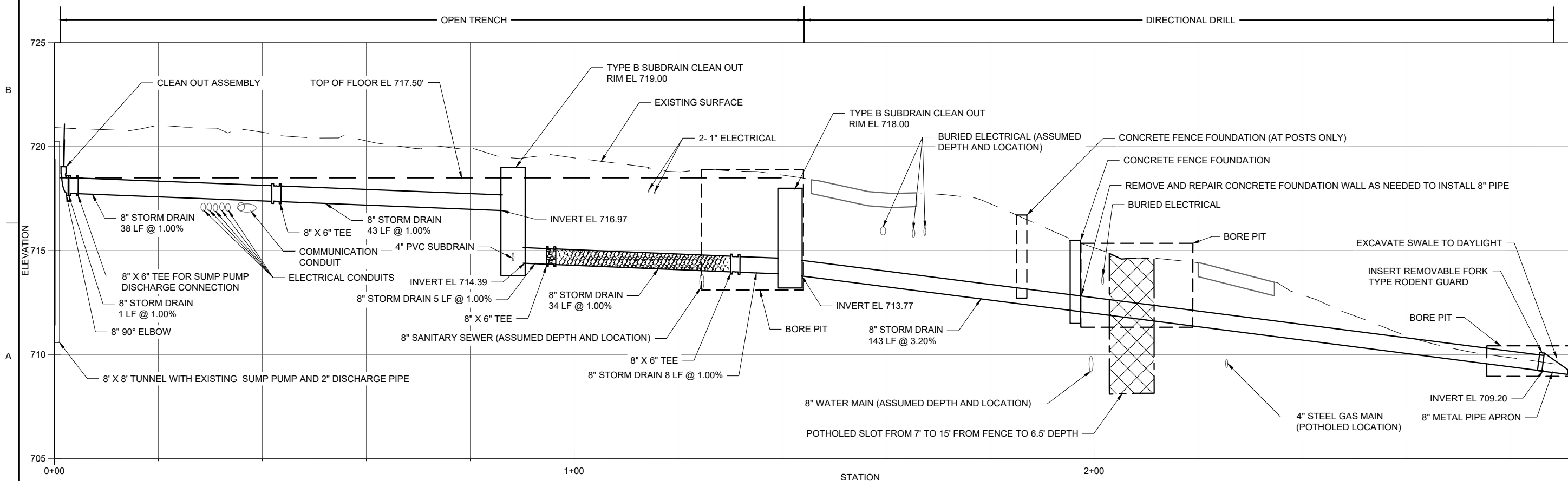
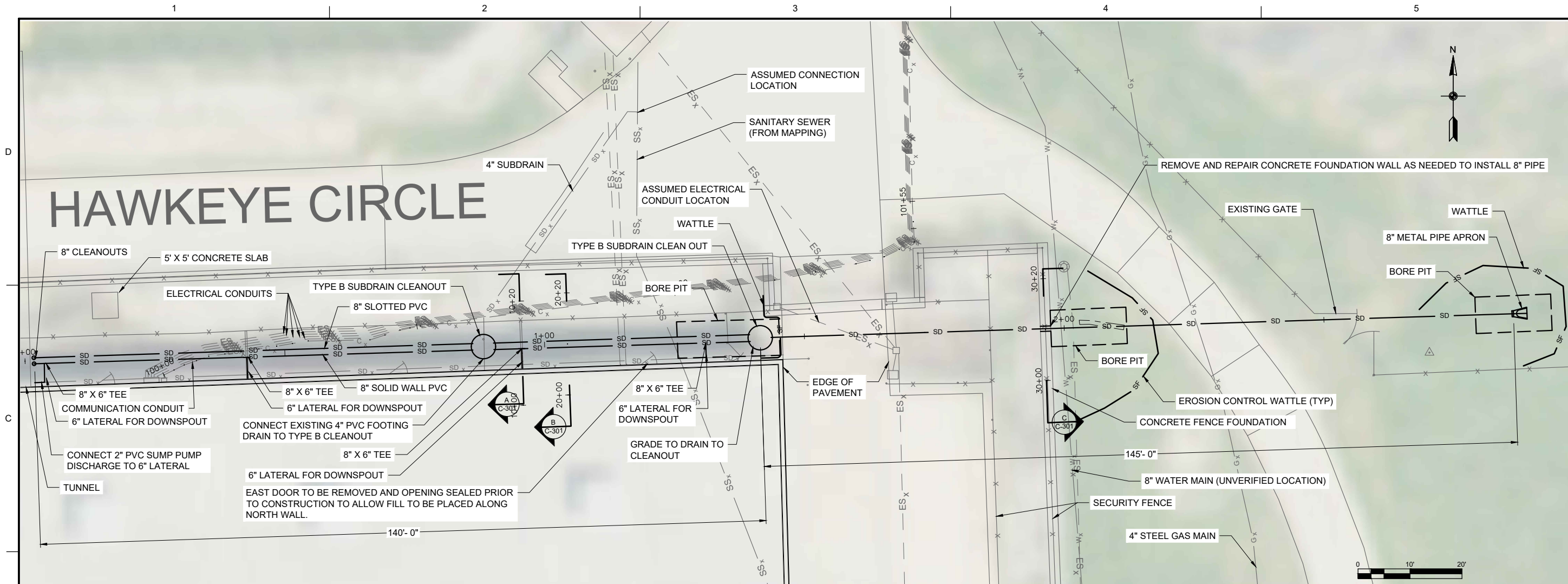
DESIGNED BY: BWR	DATE:	SUBSCRIPTION NO.:
CHKD BY: BWR	ISSUE DATE:	CONTRACT NO.:
ISSUED BY: BWR	FILE NUMBER:	FILE NAME:
SIZE: ANSI B		

DOC MPCF IPI BUILDING
STORMWATER MANAGEMENT
1200 E WASHINGTON ST
MOUNT PLEASANT, IOWA

REMOVALS

SHEET IDENTIFICATION
C-090

HAWKEYE CIRCLE



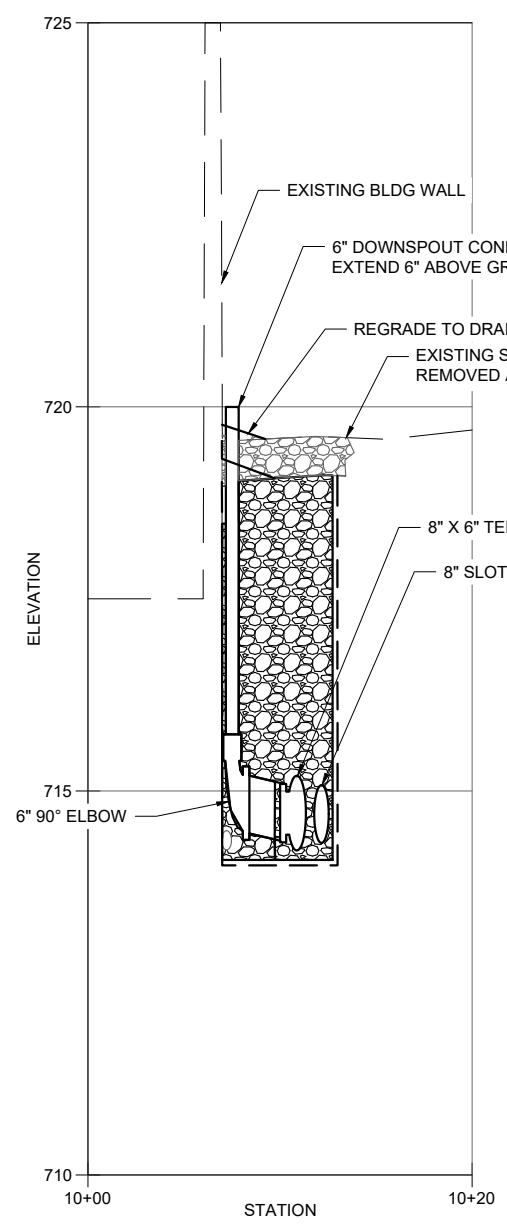
MARK	DESCRIPTION	DATE	APPR
1	REVISED	9/6/24	BWR
0	FOR BIDS	7/26/24	BWR

DESIGNED BY:	DATE:
DRAWN BY:	SUBMITTAL NO.:
CHECKED BY:	CONTRACT NO.:
ISSUED BY:	FILE NUMBER:
SCALE:	ISSUE DATE:
SIZE:	FILE NAME:

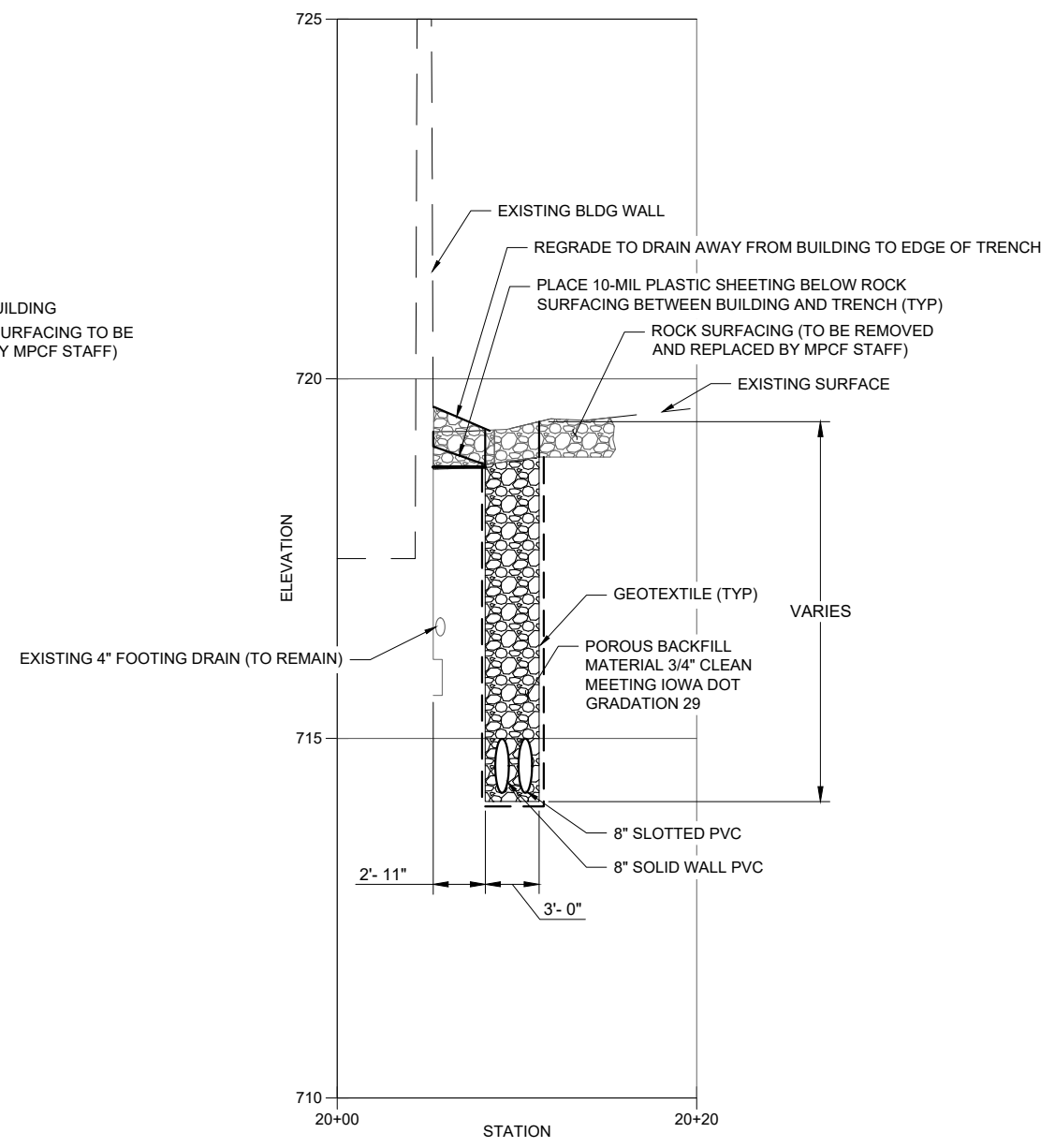
IOWA DEPARTMENT OF
 ADMINISTRATIVE SERVICES
 HOOPER STATE OFFICE BUILDING
 FIRST FLOOR
 100 S. MAIN ST.
 DES. MOBILE, IA 50319-0105
 WATERSMITH ENGINEERING
 1029 HERSHEY AVE
 MUSCATINE, IA 52761

DOC MFCF IPI BUILDING
 STORMWATER MANAGEMENT
 1200 E WASHINGTON ST
 MOUNT PLEASANT, IOWA
 PLAN & PROFILE

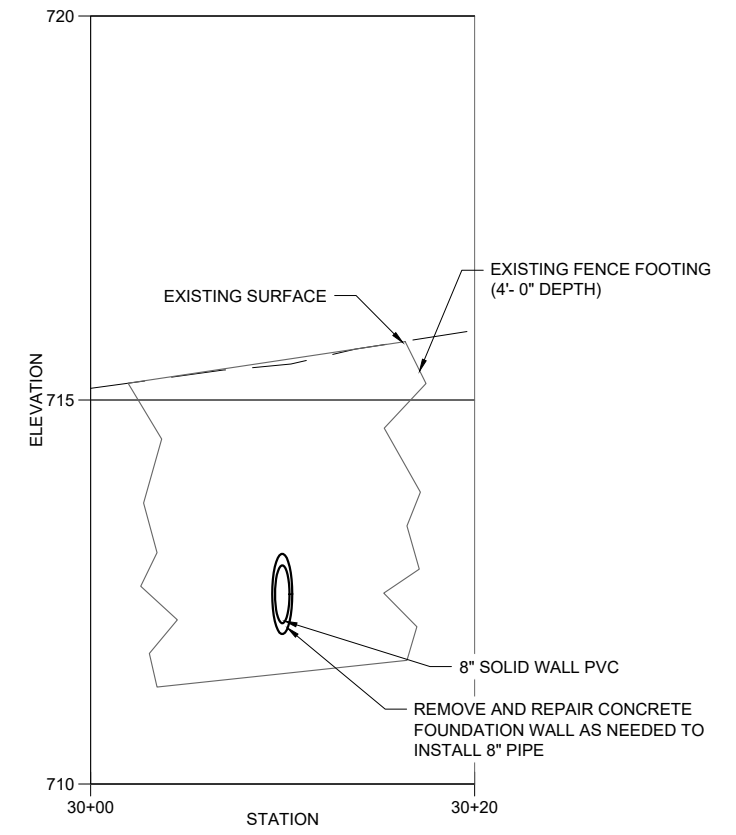
SHEET
 IDENTIFICATION
 C-101



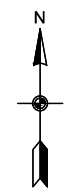
A SECTION AT STA 0+95



B SECTION AT STA 1+04



C SECTION AT STA 1+96



MARK	DESCRIPTION	DATE	APPR
1	REVISED	9/6/24	BWR
0	FOR BIDS	7/26/24	BWR

DESIGNED BY:	DATE:
BWR	
CHKD BY:	SOLICITATION NO.:
BWR	
DNV BY:	CONTRACT NO.:
XXX	
SUBMITTED BY:	FILE NUMBER:
BWR	
PLOT SCALE:	ISSUE DATE:
	XX-XX-XX
SIZE:	FILE NAME:
ANSI B	

IOWA DEPARTMENT OF
HOOPER STATE OFFICE BUILDING,
ADMINISTRATIVE SERVICES
FIRST FLOOR
100 WEST FIRST ST.
DES. MOBILE, IA 50319-0105

WATERSMITH ENGINEERING
1029 HERSHEY AVE
MUSCATINE, IA 52761

DOC. MPCF IPI BUILDING
STORMWATER MANAGEMENT
1200 E WASHINGTON ST
MOUNT PLEASANT, IOWA

SECTIONS AND DETAILS

SHEET
IDENTIFICATION
C-301

1

2

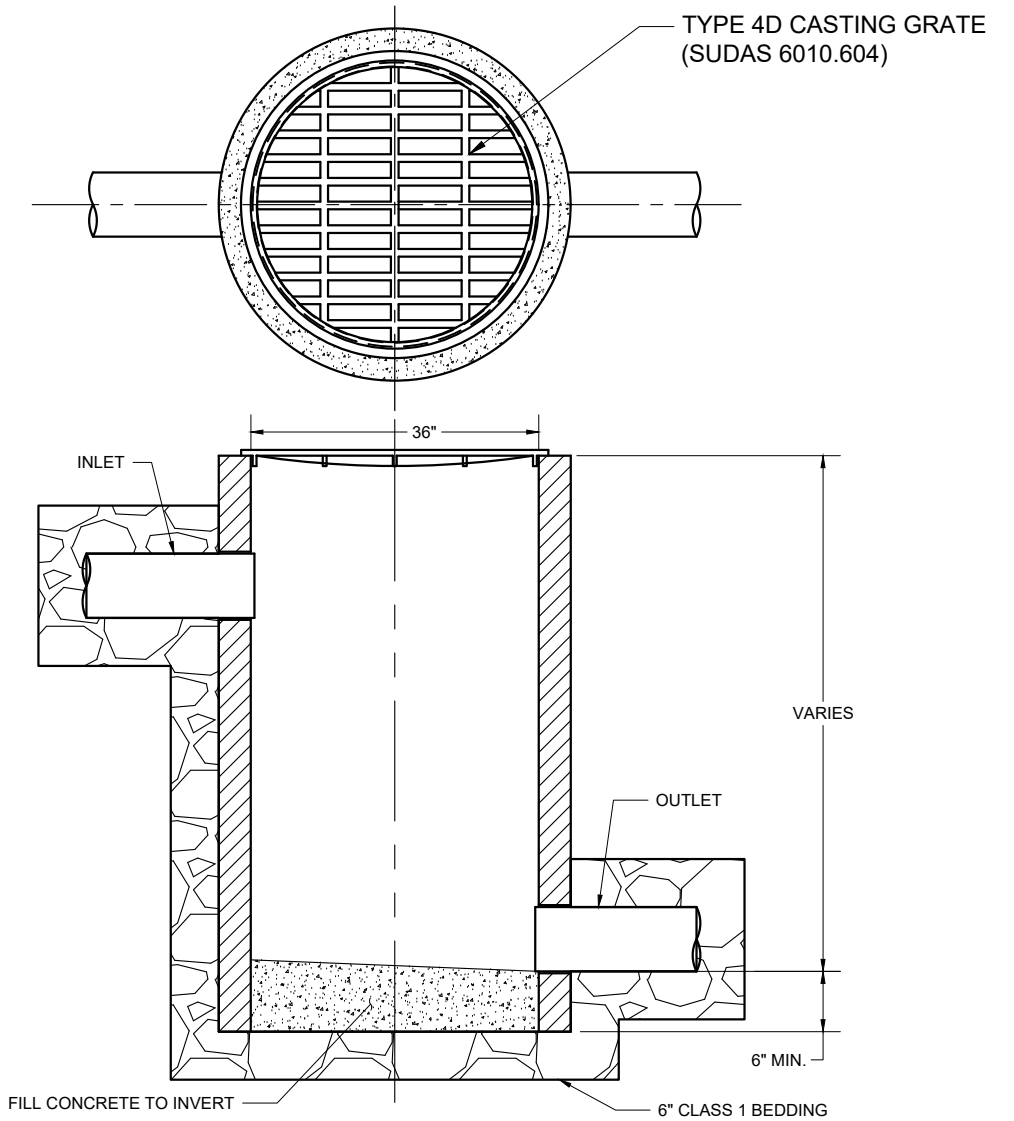
3

4

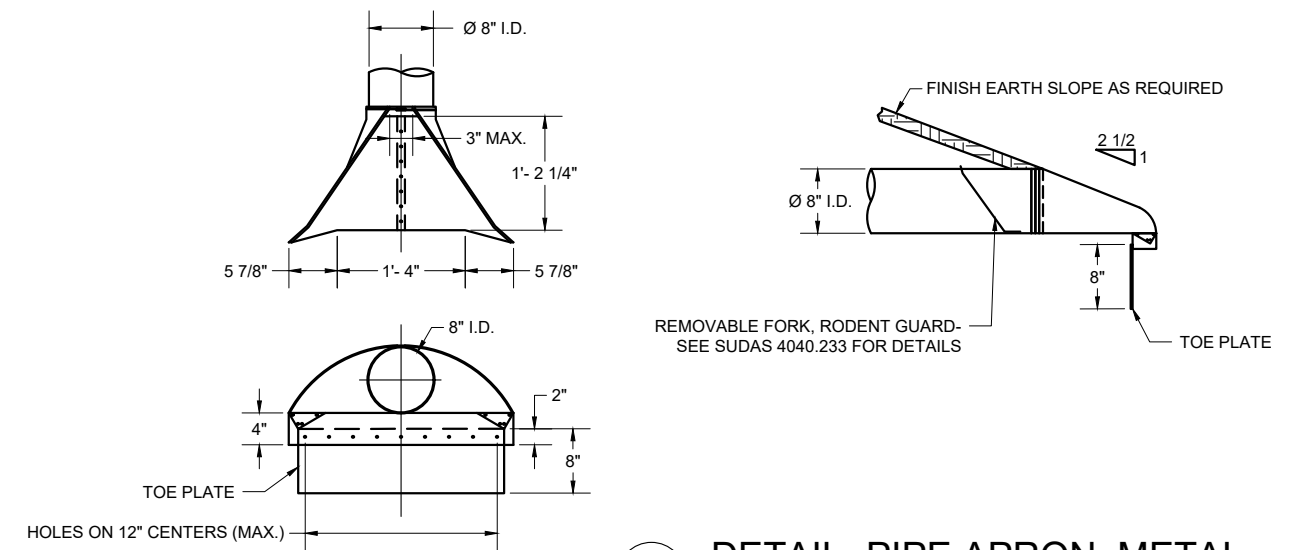
5

COLLECTOR PIPE TABLE							
DOWNSTREAM STRUCTURE	UPSTREAM STRUCTURE	PIPE DIA. (IN)	LENGTH (FT)	SLOPE (%)	DOWNSTREAM INVERT EL.	UPSTREAM INVERT EL.	COMMENT
PIPE APRON	TYPE B CLEANOUT	8"	143.0	3.20	709.20	713.82	SOLID WALL PVC
TYPE B CLEANOUT	TYPE B CLEANOUT	8"	49.0	1.00	713.93	714.43	SOLID WALL PVC
TYPE B CLEANOUT	TYPE B CLEANOUT	8"	49.0	1.00	713.93	714.43	SLOTTED WALL PVC
TYPE B CLEANOUT	TYPE A CLEANOUT	8"	84.0	1.00	716.97	717.80	SOLID WALL PVC
TYPE B CLEANOUT	TYPE A CLEANOUT	8"	84.0	1.00	716.97	717.80	SLOTTED WALL PVC

STORM STRUCTURE TABLE				
STRUCTURE NAME	STATION	TYPE	GRADE EL.	INVERT EL.
APRON	2+87.00	PIPE APRON, 8", METAL	709.96	709.2
TYPE B CLEANOUT	1+41.59	TYPE B CLEANOUT- 36" RCP	718.00	713.20
TYPE B CLEANOUT	0+88.28	TYPE B CLEANOUT- 36" RCP	719.00	713.80
TYPE A CLEANOUT	0+01.75	TYPE A CLEANOUT, 8", PVC	719.03	717.75
TYPE A CLEANOUT	0+01.75	TYPE A CLEANOUT, 8", PVC	719.03	717.75



A DETAIL- TYPE B CLEANOUT, PVC



B DETAIL- PIPE APRON, METAL



DATE	DESCRIPTION	MARK	DATE	APPR
9/6/24	REVISED	1	BWR	
7/26/24	FOR BIDS	0	BWR	

DESIGNED BY: BWR	CHECKED BY: BWR	SOLICITATION NO.:	DATE:
DRAWN BY: XXX	SUBMITTED BY: BWR	CONTRACT NO.:	
PLOT SCALE:	ISSUE DATE:	FILE NUMBER:	
SIZE: ANSI B	FILE NAME:		

IOWA DEPARTMENT OF
 TRANSPORTATION
 ADMINISTRATIVE SERVICES
 HOOVER STATE OFFICE BUILDING,
 FIRST FLOOR
 1300 STATE STREET
 DES MOINES, IA 50319-0105
 WATERSMITH ENGINEERING
 1029 HERSHEY AVE
 MUSCATINE, IA 52761

DOC MPOF PI BUILDING
 STORMWATER MANAGEMENT
 1200 E WASHINGTON ST
 MOUNT PLEASANT, IOWA
DETAILS

SHEET
 IDENTIFICATION
C-501