



ADDENDUM

PROJECT: RFB# 930500-01 - 9305 DAS CC
Capitol North and South Stairs Repair

OWNER: State of Iowa Legislative Branch **DATE:** March 13, 2024

PROJECT NO.: 21818001

BID DATE: March 21, 2024 **ADDENDUM #** 01

TO ALL HOLDERS OF DRAWINGS AND PROJECT MANUALS

This addendum is issued to incorporate the following changes in the drawings and project manual. For bids to be considered, this addendum must be acknowledged by indicating on the Form of Bid.

Bidders shall make the following corrections or additions to the bidding documents. These items shall supersede, modify, and/or change all statements or drawings to the contrary in the drawings and project manual and shall take precedence over these documents. Bidders shall base their bid on the drawings and project manual and as modified by the changes herein stated.

To: All Bidders

Contents: (2) Typed Pages
(0) Bid Form Pages
(0) Specification Section Pages
(3) Drawing Sheets

1. DIVISION 0/1- FRONT ENDS

PROJECT MANUAL CHANGES

Item #	Detail /Sheet	Description of Change
1.	N/A	None

2. STRUCTURE

DRAWING CHANGES

Item #	Detail /Sheet	Description of Change
1.	N/A	None

3. ARCHITECTURE

ARCHITECTURAL MANUFACTURERS/PRODUCTS:

Item #	Section	Description of Change
1.	07 1400	Fluid applied waterproofing, Carlisle Coating & Waterproofing (CCW) Miraseal waterproofing system – Substitution Rejected

DRAWING CHANGES

Item #	Detail /Sheet	Description of Change
1.	K4/AD100	Revise the note to the following: Existing steel sidewalk light protect as req'd.
2.	A4/AD100	Revise the note to the following: Existing steel sidewalk light protect as req'd.
3.	K13/AD100	Revise the note to the following: Existing steel sidewalk light protect as req'd.
4.	A13/AD100	Revise the note to the following: Existing steel sidewalk light protect as req'd.
5.	K13/AD100	Add four treads for remove and dispose granite.
6.	A13/AD100	Add four treads for remove and dispose granite.
7.	A4/AD100	Revise the note from "skylight" to "sidewalk light"
8.	A13/AD100	Revise the note from "skylight" to "sidewalk light"
9.	K13/AD100	Revise the note from "skylight" to "sidewalk light"
10.	K4/AD100	Revise the note from "skylight" to "sidewalk light"
11.	K13/A100	Revise note to delete the words "and polish"
12.	A13/A100	Revise note to delete the words "and polish"
13.	F15/A400	Revise the drawing title from "skylight" to "sidewalk light"
14.	A15/A400	Revise the drawing title from "skylight" to "sidewalk light"
15.	F15/A400	Revise the note in three locations from "skylight" to "sidewalk light"
16.	A5/A400	Revise the note from "skylight" to "sidewalk light"

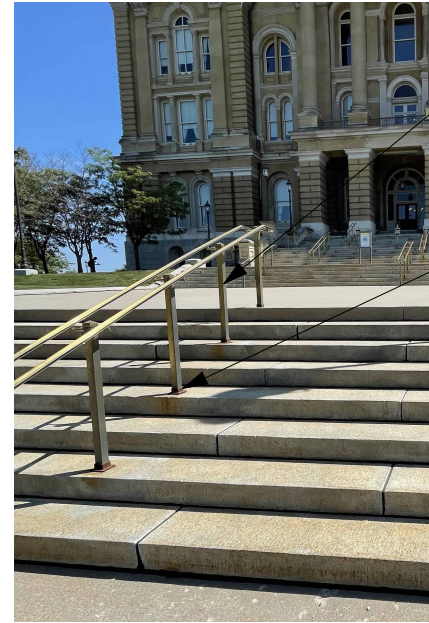
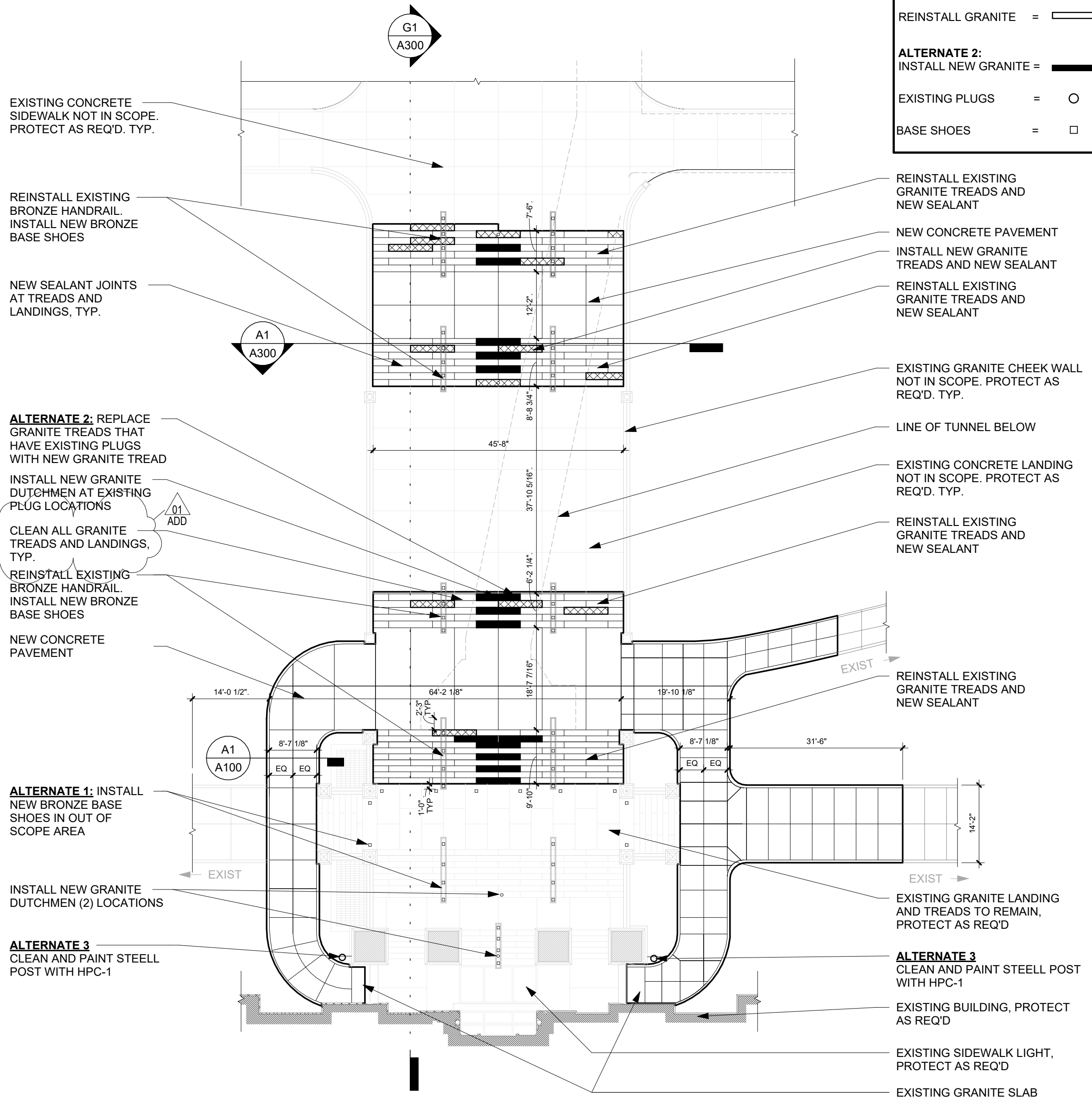
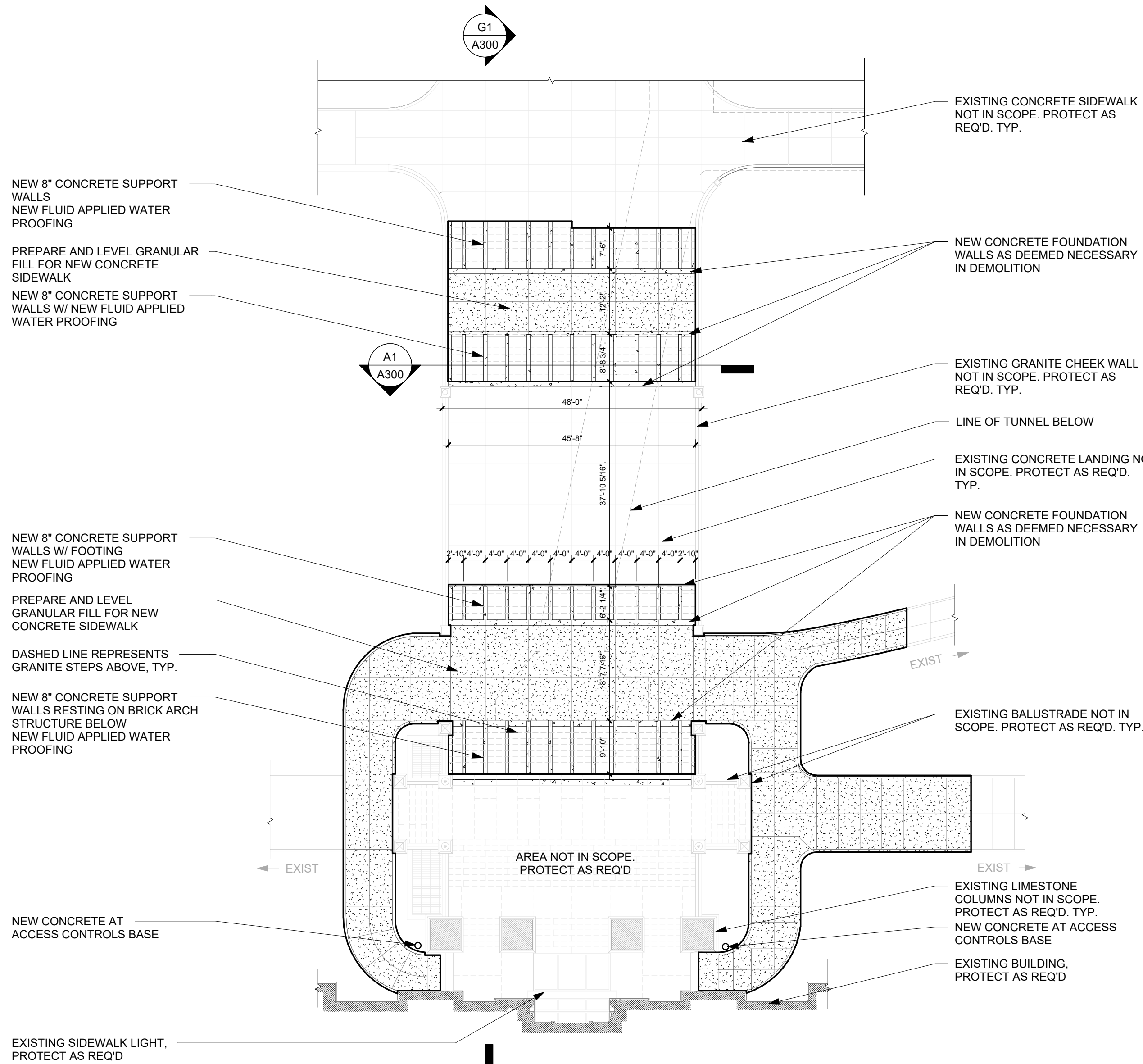
END OF ADDENDUM #1

LEGEND

INSTALL NEW GRANITE	=	
REINSTALL GRANITE	=	
ALTERNATE 2: INSTALL NEW GRANITE	=	
EXISTING PLUGS	=	
BASE SHOES	=	

LEGEND

INSTALL NEW GRANITE	=	
REINSTALL GRANITE	=	
BASE SHOES	=	



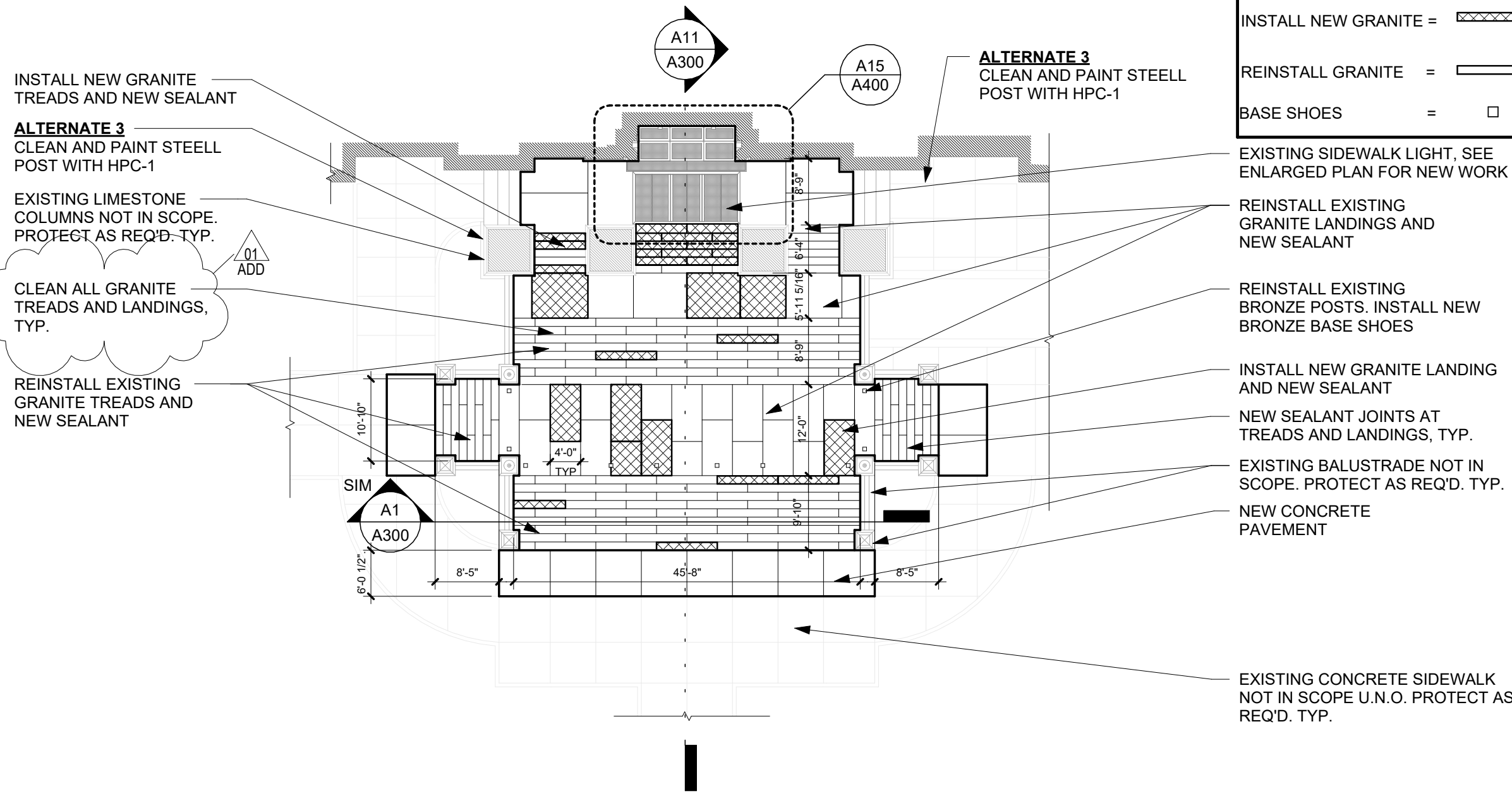
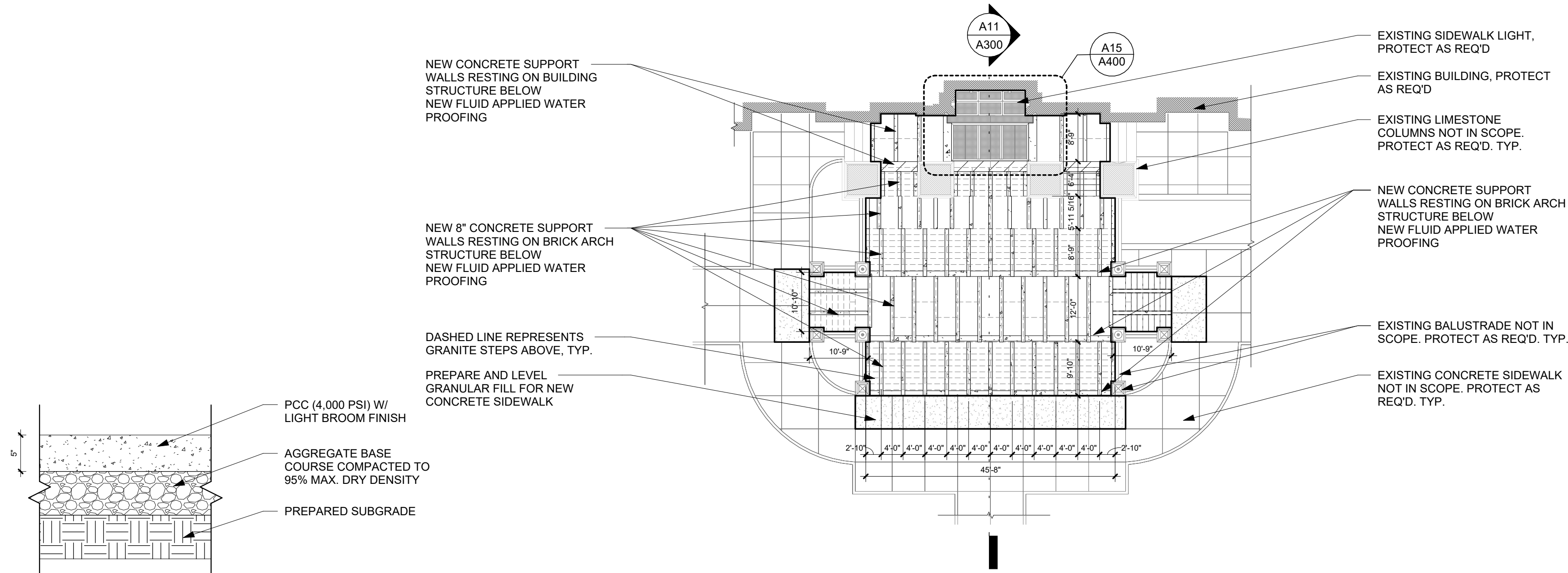
REINSTALL EXISTING BRONZE HANDRAIL. POLISH AND CLEAN.

REMOVE AND DISPOSE EXISTING METAL BASE SHOES. INSTALL NEW BRONZE BASE SHOES

F1 EXISTING CONDITIONS - HANDRAIL
1" = 1'-0"

F4 ENLARGED PLAN - NORTH STAIR - STRUCTURAL
1/16" = 1'-0"

F13 ENLARGED PLAN - NORTH STAIR - NEW WORK
1/16" = 1'-0"

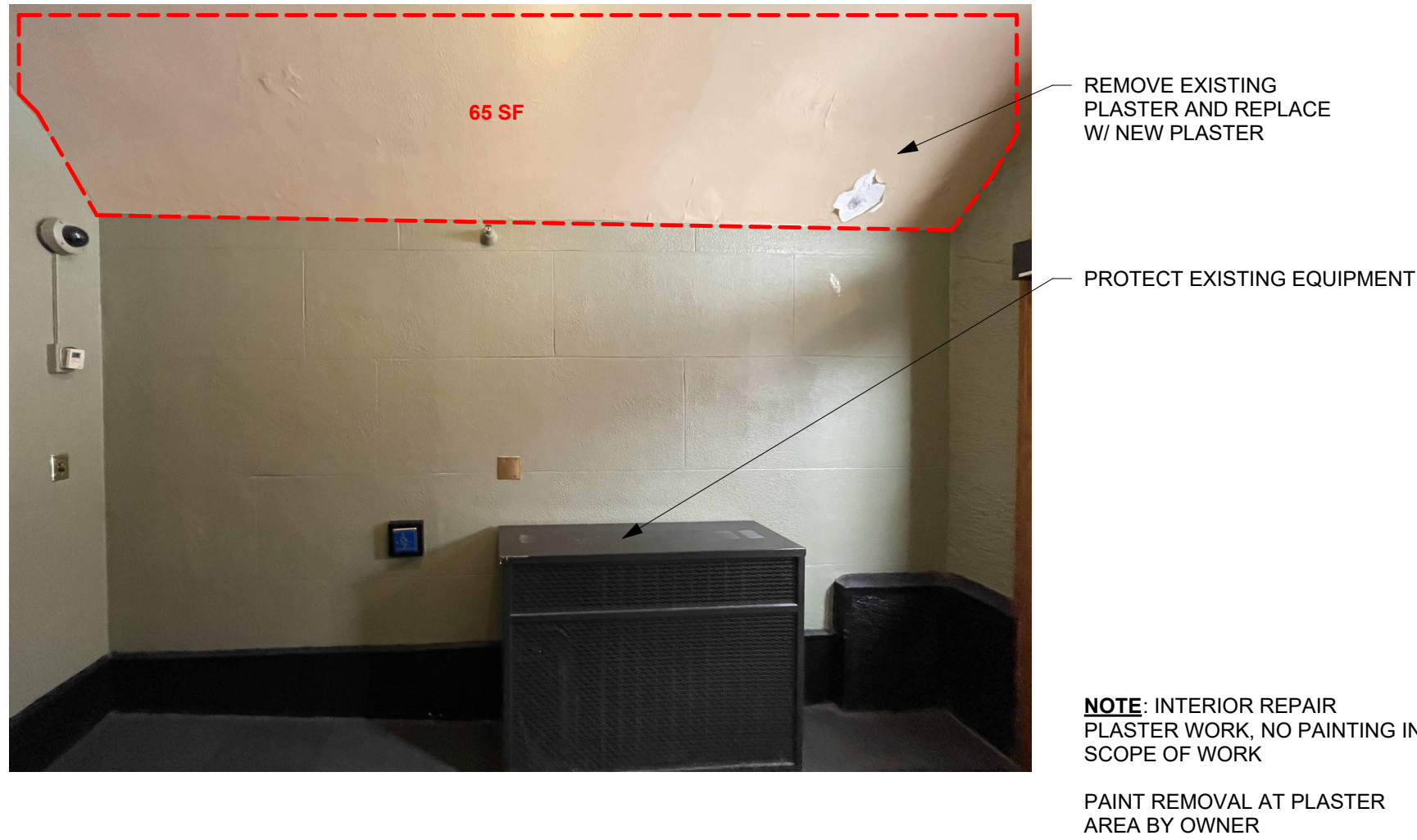


A1 SECTION DETAIL - NEW CONCRETE, TYPICAL
1" = 1'-0"

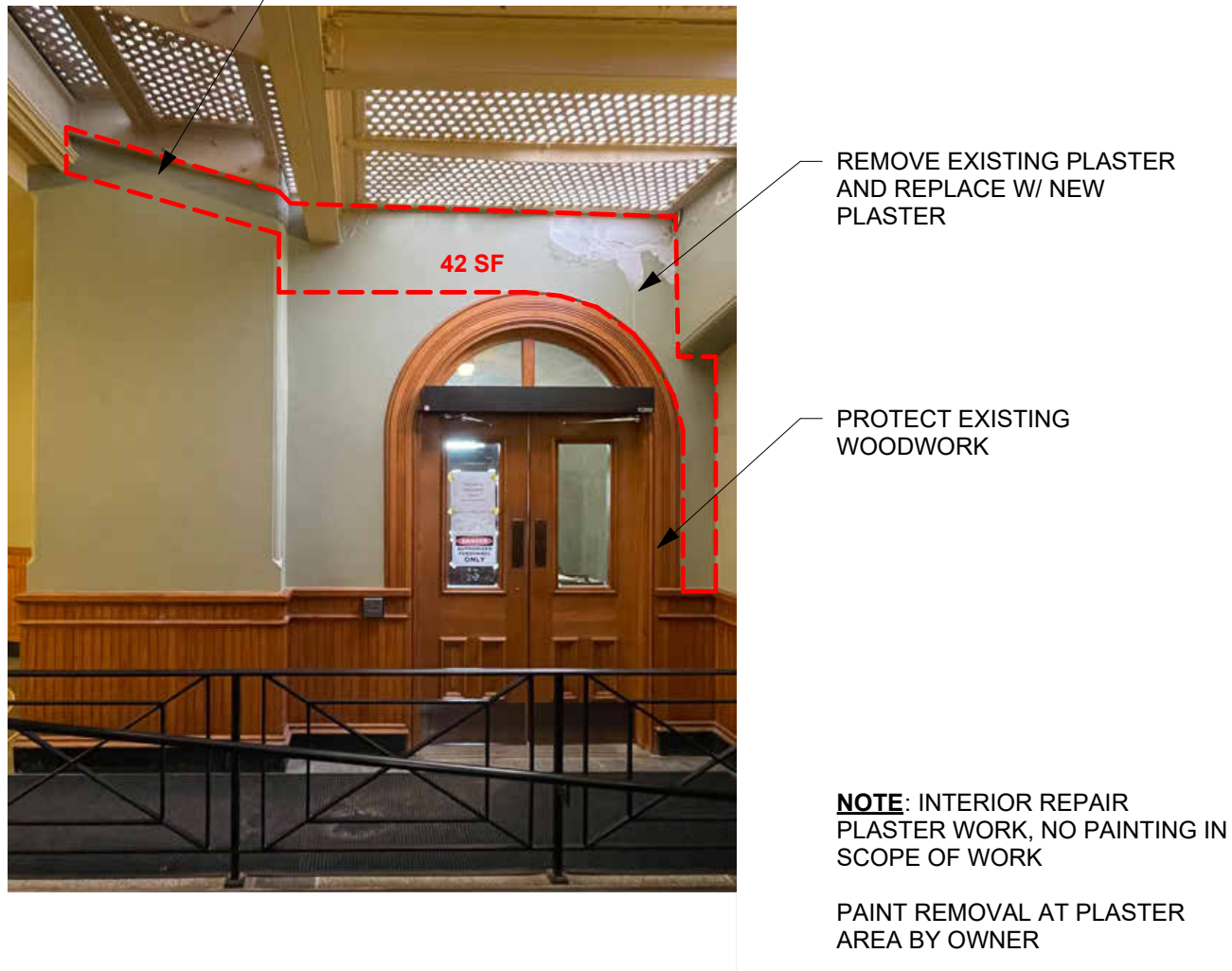
A4 ENLARGED PLAN - SOUTH STAIR - STRUCTURAL
1/16" = 1'-0"

A13 ENLARGED PLAN - SOUTH STAIR - NEW WORK
1/16" = 1'-0"

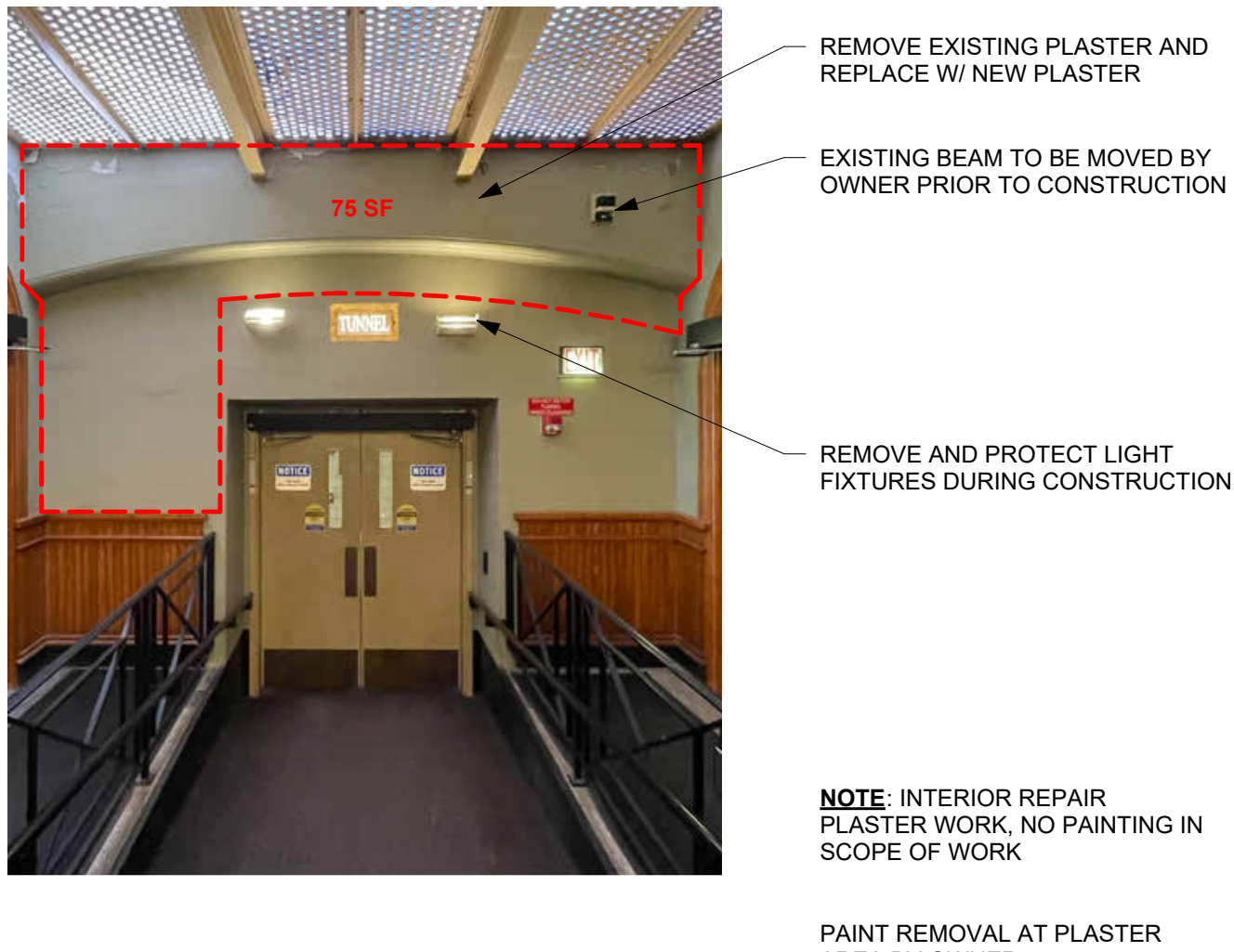
PRELIMINARY. NOT FOR CONSTRUCTION.



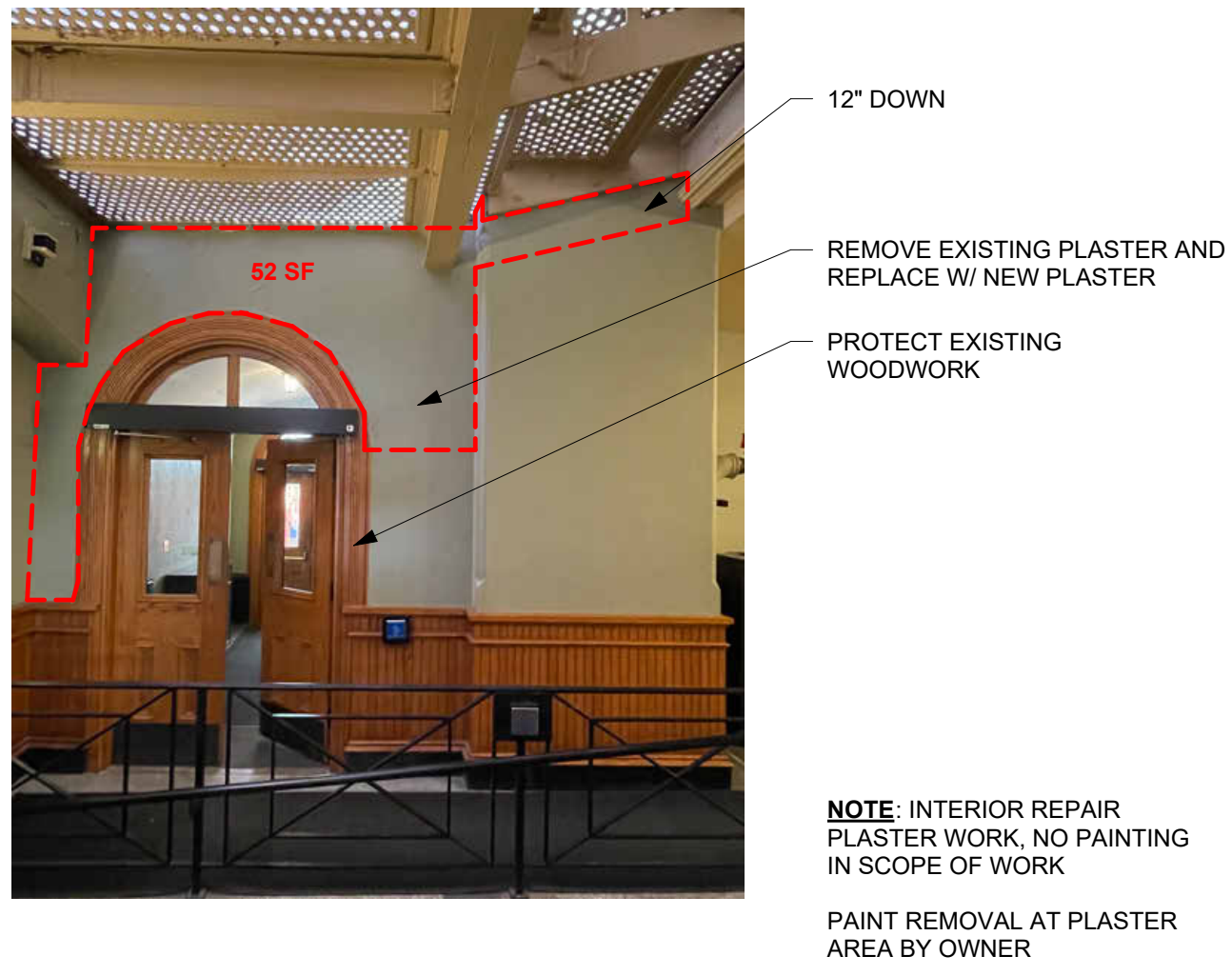
L1 PHOTO - INTERIOR ELEVATION - SOUTH VESTIBULE



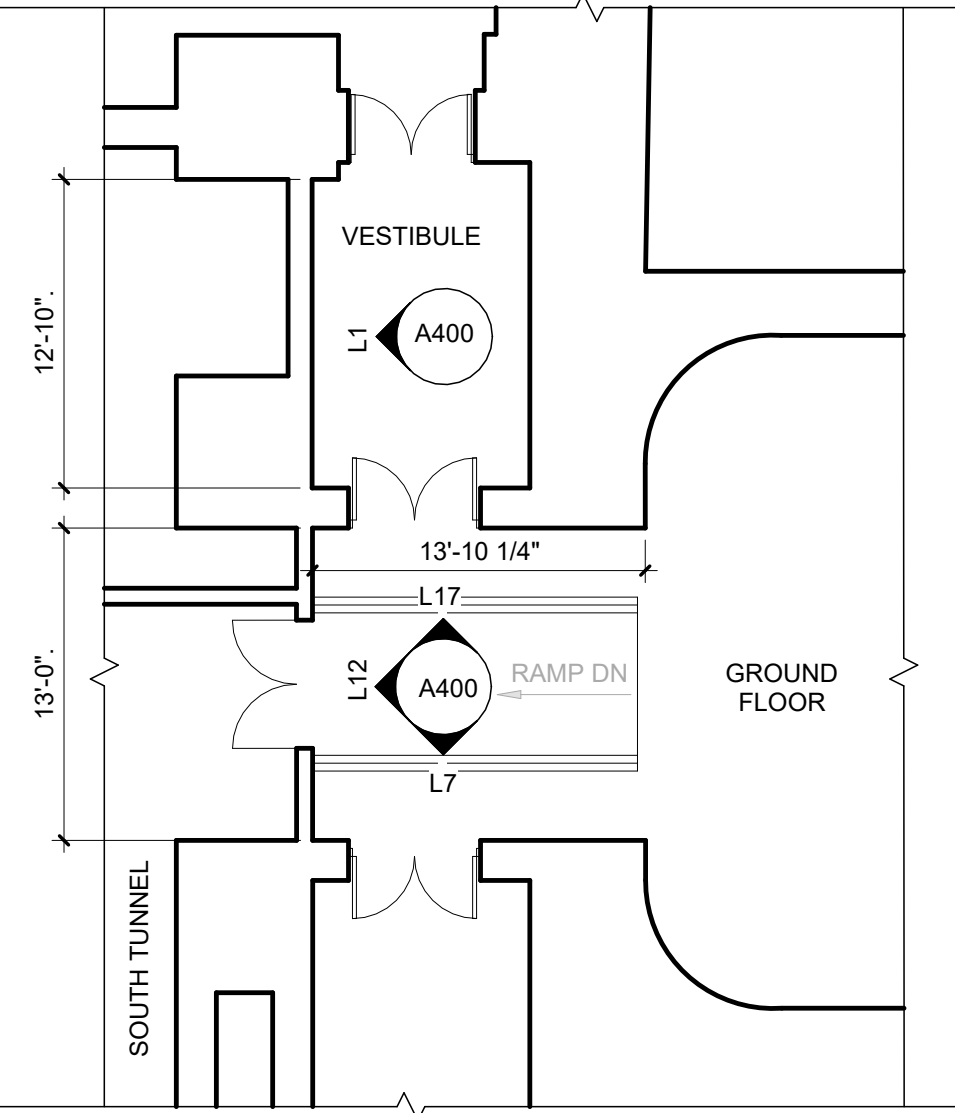
L7 PHOTO - INTERIOR ELEVATION - EAST



L12 PHOTO - INTERIOR ELEVATION - SOUTH

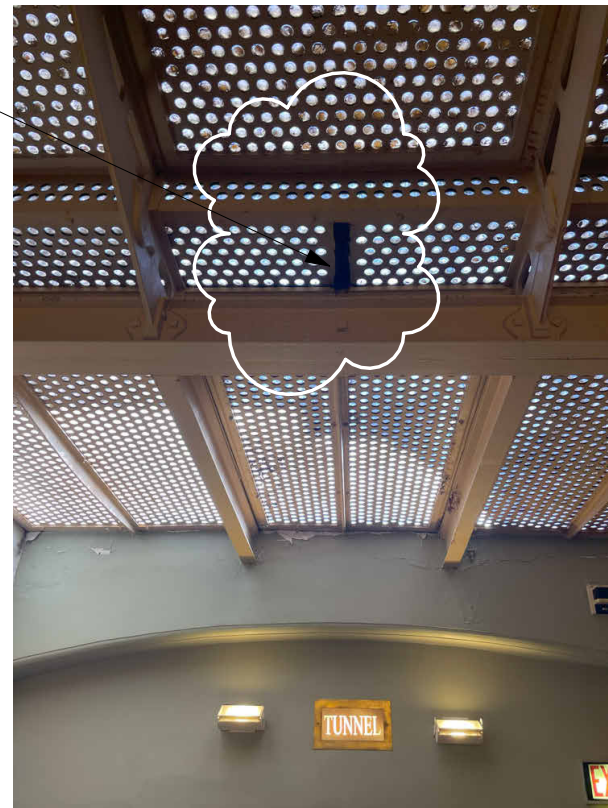


L17 PHOTO - INTERIOR ELEVATION - WEST



F1 ENLARGED PLAN - GROUND FLOOR ENTRANCE - SOUTH
1/8" = 1'-0"

REPLACE MISSING 2-1/4" x 12-1/4" x 3/8" STEEL PLATES BELOW TREADS. HPC-2. PROVIDE NEW 3/8" BOLTED CONNECTION.



F7 SIDEWALK LIGHT - MISSING STEEL
1" = 1'-0"

GENERAL NOTE: NEW STEEL COMPONENTS TO BE PAINTED HPC-2, TYPICAL

STRUCTURAL NOTE: NEW COPED WF BEAM, SEE PLAN, PROVIDE 1 1/2" LONG SLOTTED HOLES

STRUCTURAL NOTE: PL 1/4 PLATE WASHERS (GALVANIZE)

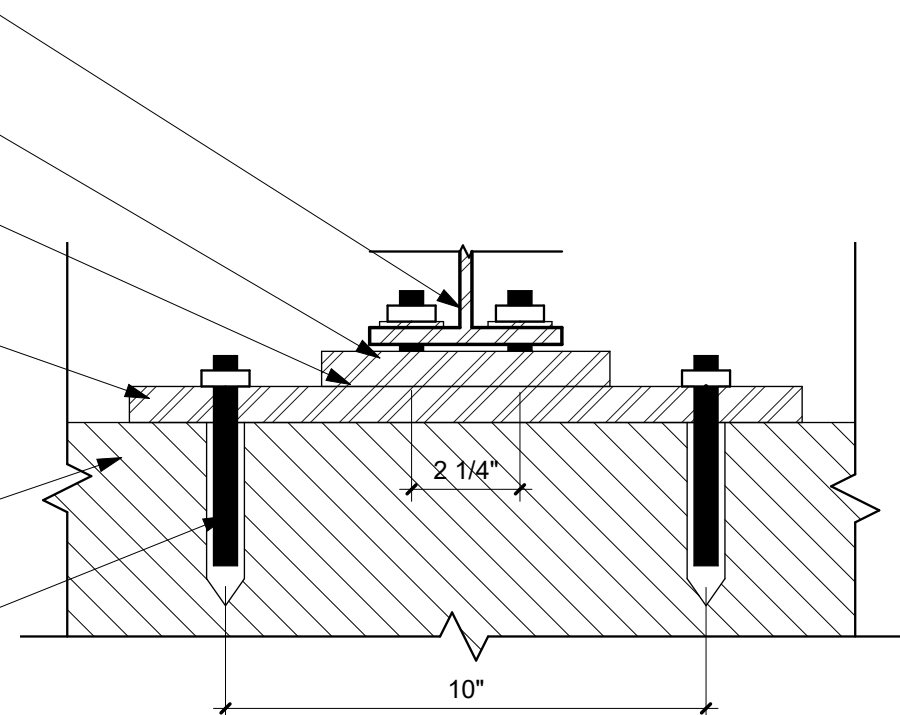
STRUCTURAL NOTE: GALVANIZED STEEL SHIMS AS REQUIRED

STRUCTURAL NOTE: PL 3/4x14x1'-2" W/ (2) 1/2" DIA. THREADED STUDS

REPLACED BRICK BEARING MATERIAL

STRUCTURAL NOTE: (2) 1/2" DIA. GALVANIZED THREADED ROD W/ HILTI HY-270 W/ HIT-SC (6" EMBED)

STRUCTURAL NOTE: NOT ALL COMPONENTS SHOWN FOR CLARITY. SEE F9 A400



F9 DETAIL SECTION - BEARING PLATE CONNECTION TO NEW BEAM
3" = 1'-0"

GENERAL NOTE: NEW STEEL COMPONENTS TO BE PAINTED HPC-2, TYPICAL
EXISTING SIDEWALK LIGHT FRAME, REFINISHED IN PLACE
GALVANIZED BREAK METAL FOR CONTINUOUS FLUID APPLIED WATER BARRIER, ADHERE TO ANGLE WITH CONSTRUCTION ADHESIVE

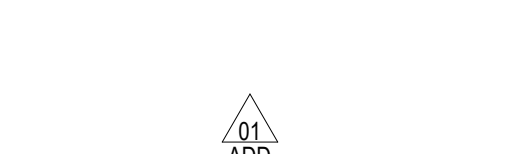
STRUCTURAL NOTE: REUSE EXISTING BOLTS OR PROVIDE NEW FOR SIDEWALK LIGHT CONNECTIONS

CONTINUOUS 5" x 5" x 3/8" FIBERGLASS PERIMETER ANGLE

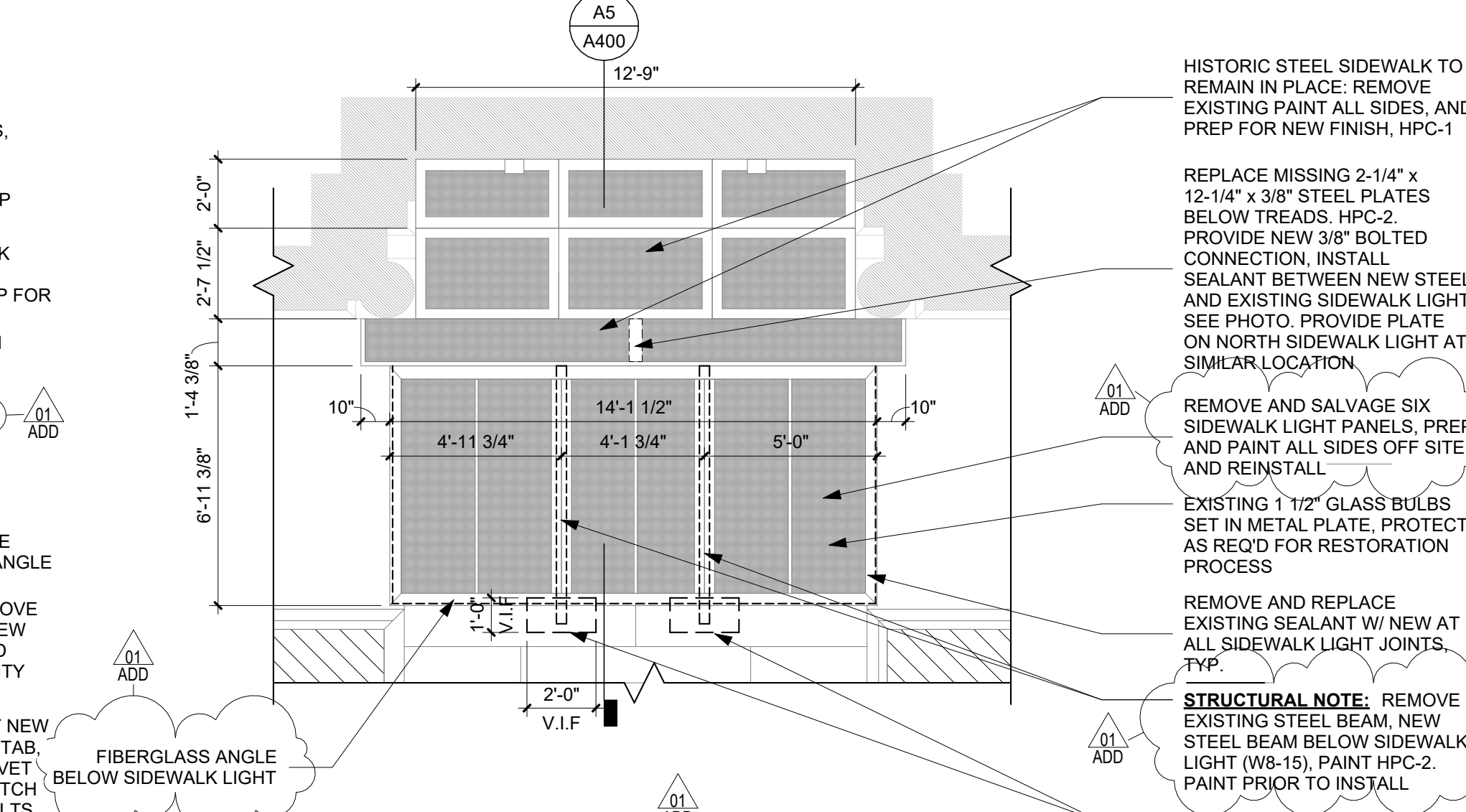
STRUCTURAL NOTE: BOLT ANGLE TO MASONRY SUBSTRATE W/ 1/4" DIAMETER HILTI-KWIK-CON II @ 1'-0" O.C. COUNTERSINK HEAD FOR FLUID APPLIED WATER PROOFING

NEW BEAM BEYOND

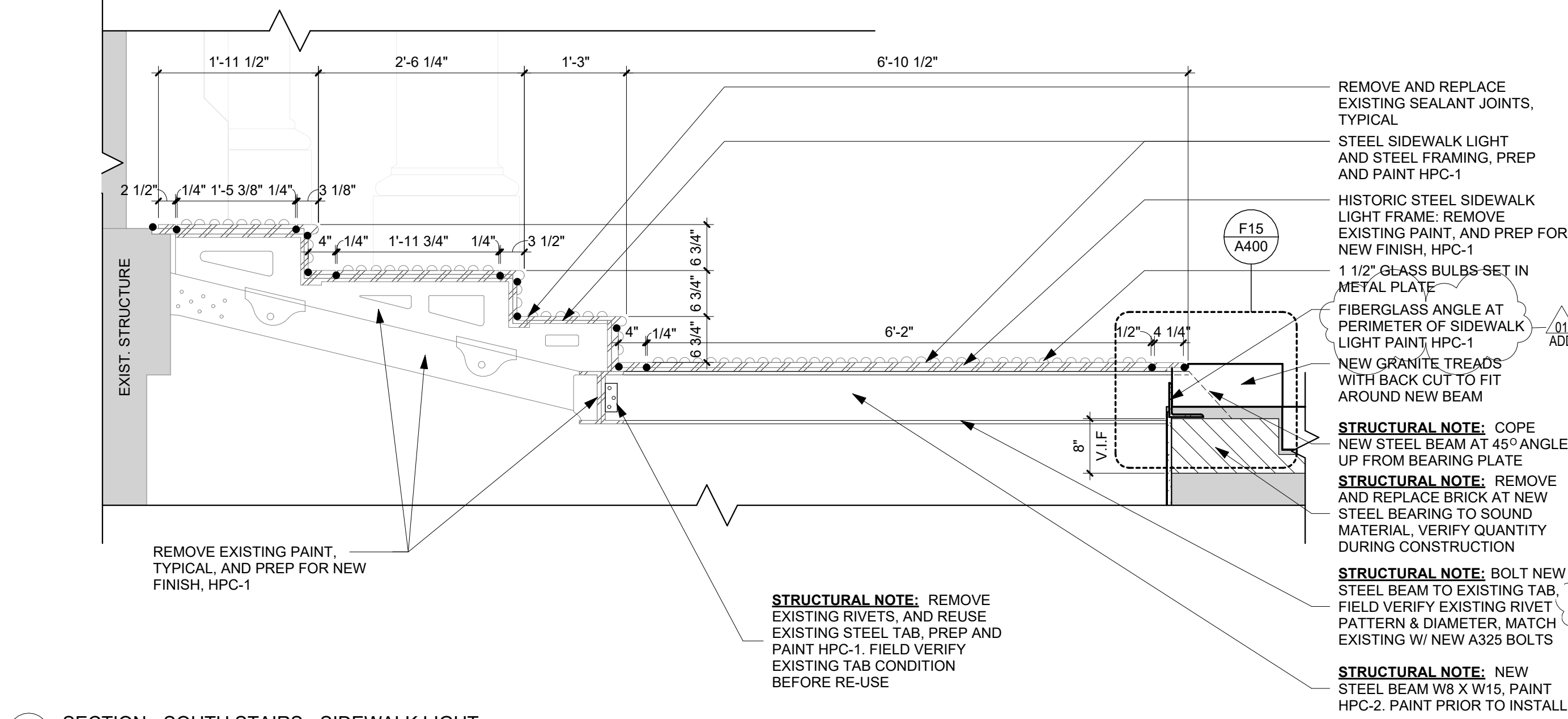
PLASTER REPAIR, SEE PHOTOS



F15 DETAIL SECTION - WATERPROOFING CONNECTION AT SIDEWALK LIGHT
3" = 1'-0"



A15 ENLARGED PLAN - SOUTH STAIR -SIDEWALK LIGHT
1/4" = 1'-0"



A5 SECTION - SOUTH STAIRS - SIDEWALK LIGHT
3/4" = 1'-0"

PRELIMINARY. NOT FOR CONSTRUCTION.