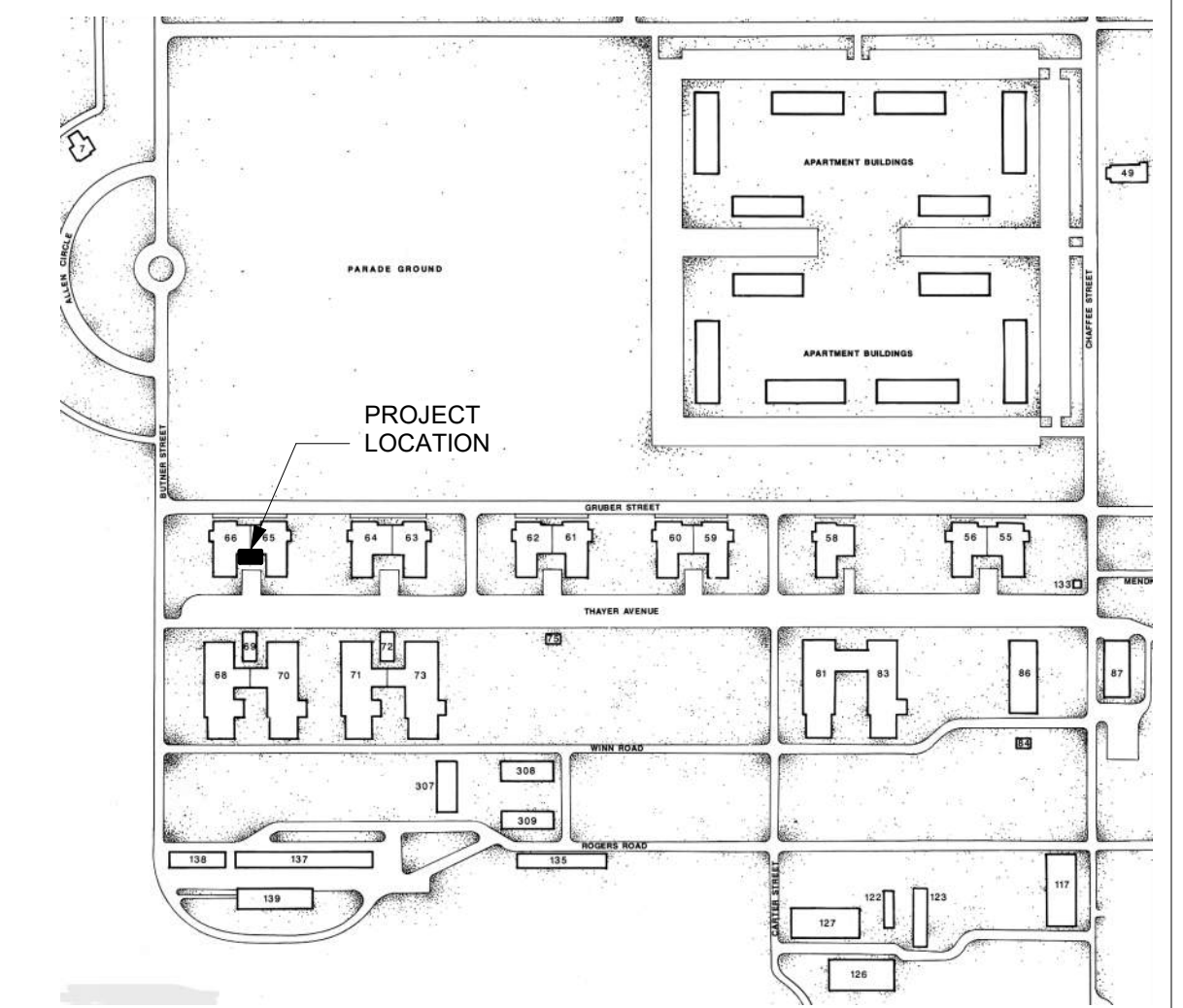




All questions regarding these plans and specifications should be directed to:

NATE STIELER, AIA
 Project Manager
 nstieler@opnarchitects.com
 515-309-6662



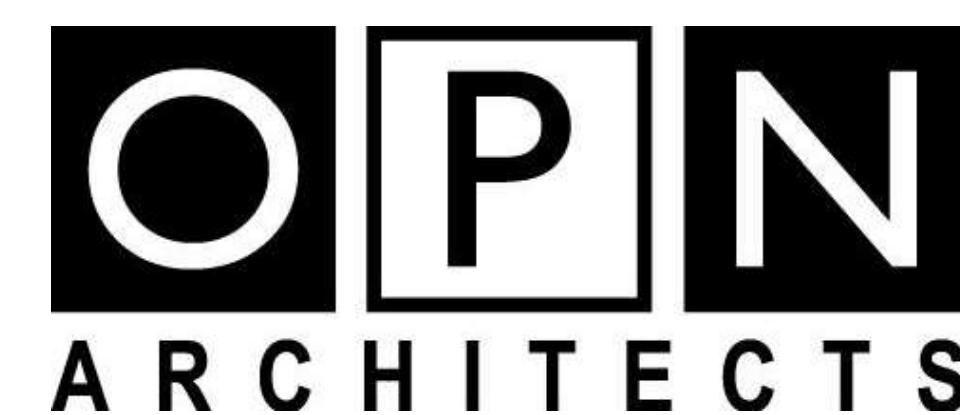
▲ SITE LOCATION

ARCHITECTURAL DRAWINGS

SHEET NUMBER	SHEET NAME
G000	COVER SHEET
AD101	DEMO ROOF PLAN AND EXISTING CONDITIONS
A101	ROOF PLAN AND DETAILS

9375.00 - DOC 5JD FT DES MOINES BLDG 65-66 ROOF REPLACEMENT

68 THAYER ST, DES MOINES, IA 50315



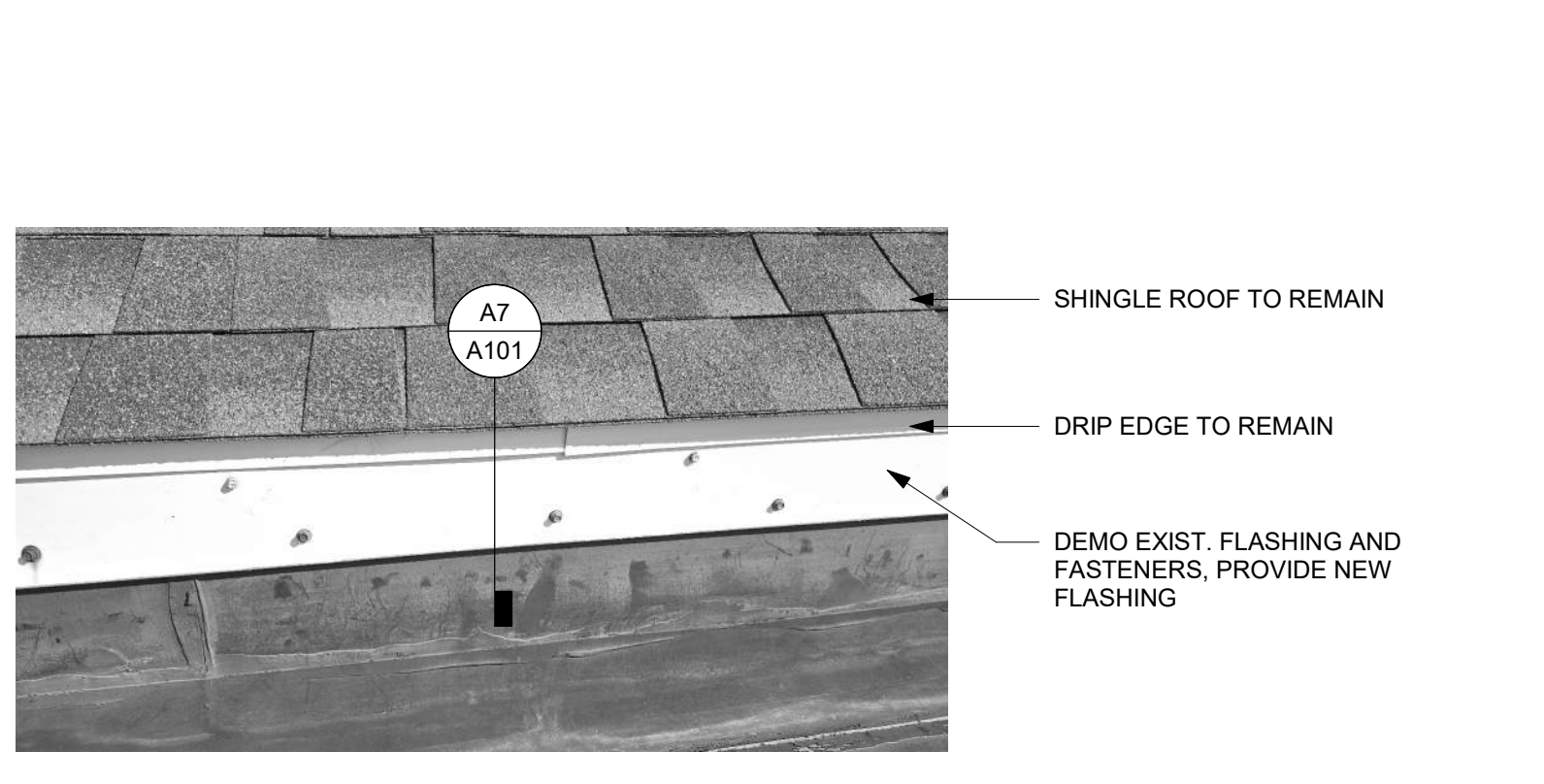
100 Court Ave. Suite 100, Des Moines, IA 50309
 P: 515-309-0722 F: 515-309-0725 www.opnarchitects.com

ARCHITECT

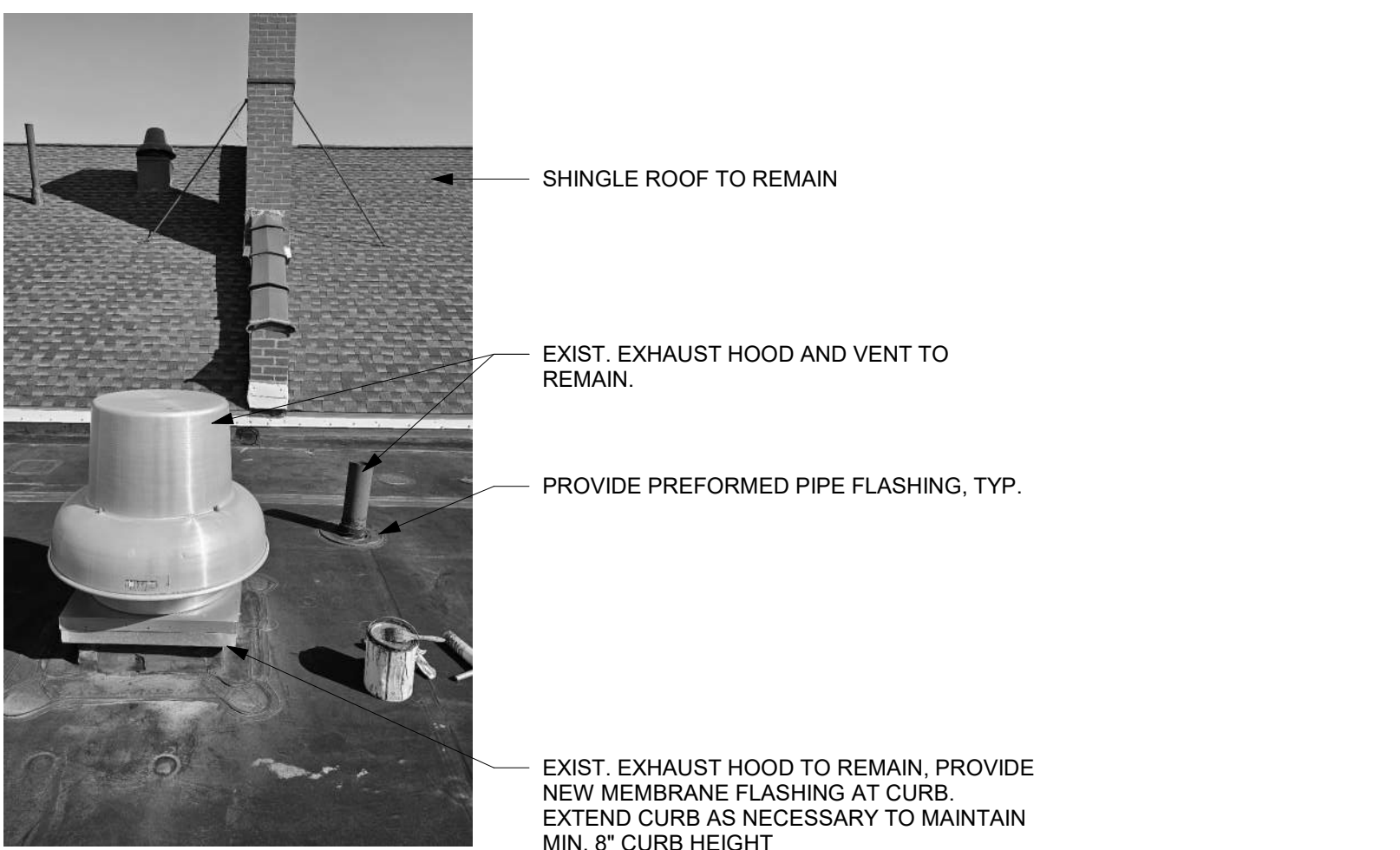
OPN ARCHITECTS
 100 COURT AVENUE
 DES MOINES, IA 50309

CONSTRUCTION MANAGER

SAMUELS GROUP
 2939 WESTOWN PARKWAY, SUITE 200
 WEST DES MOINES, IA 50266



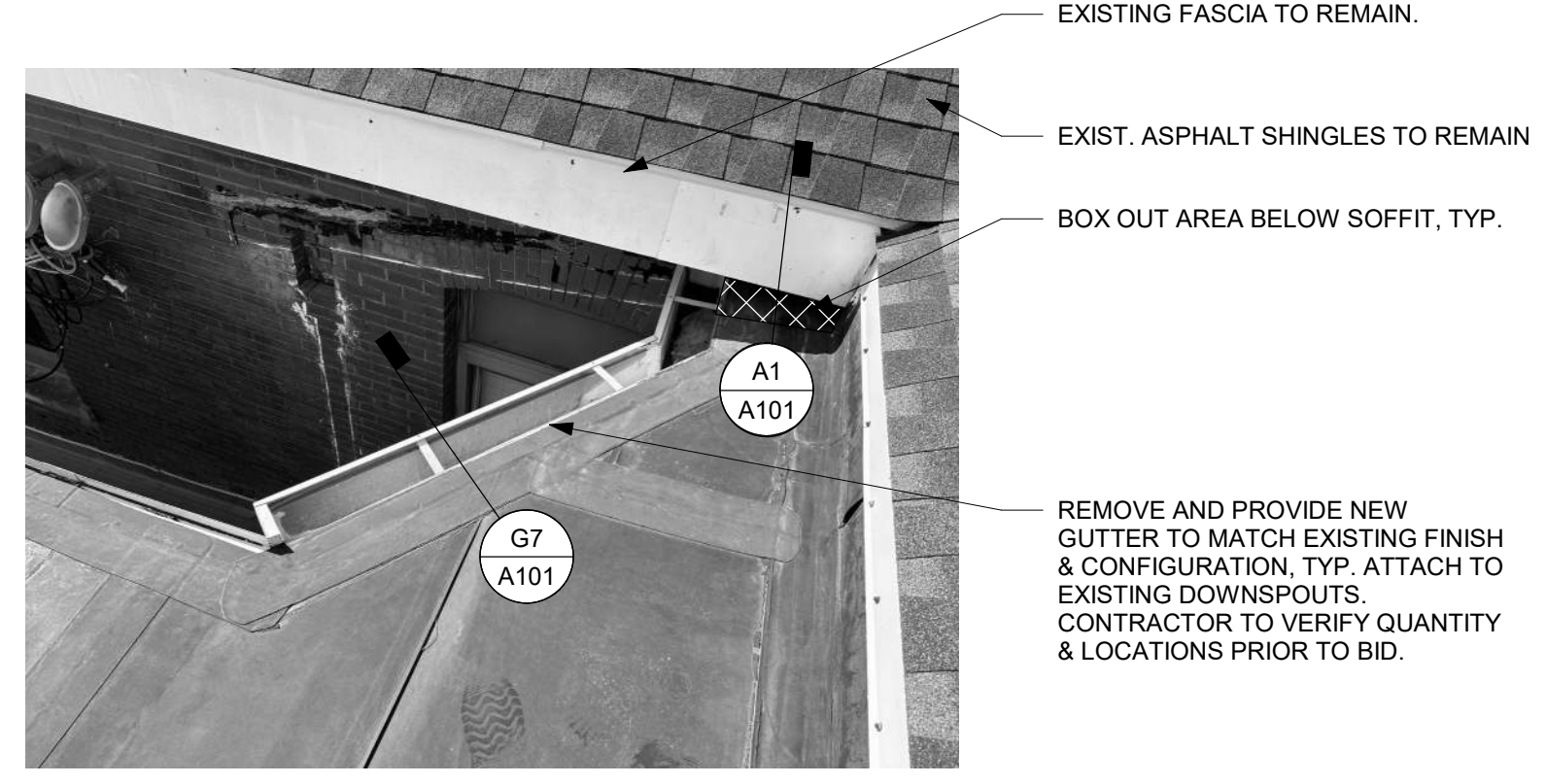
R1 EXISTING UPPER SHINGLE ROOF FASCIA
12" = 1'-0"



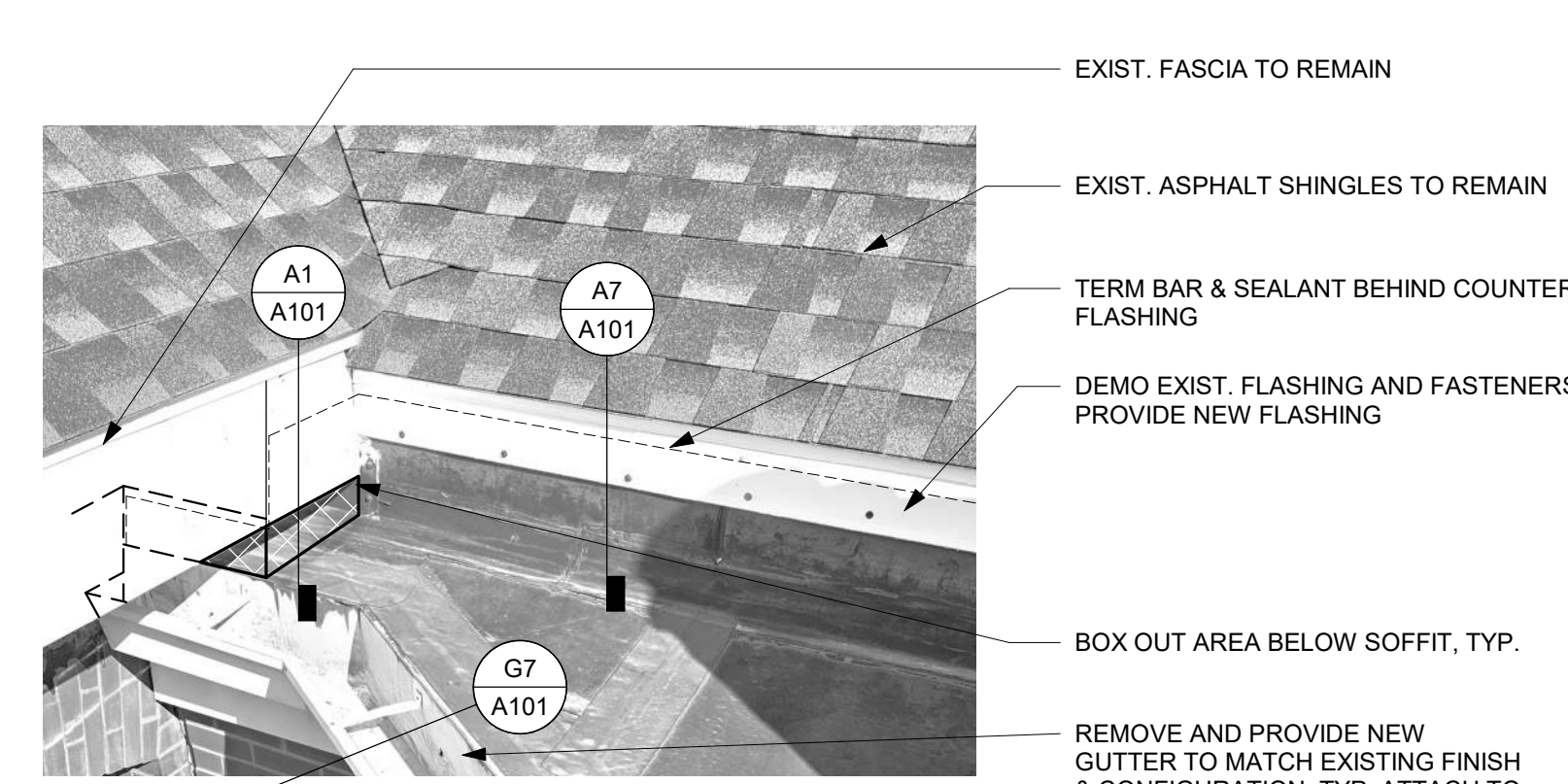
R7 EXISTING ROOF VENTS AND EXPOSED PARTY WALL
12" = 1'-0"



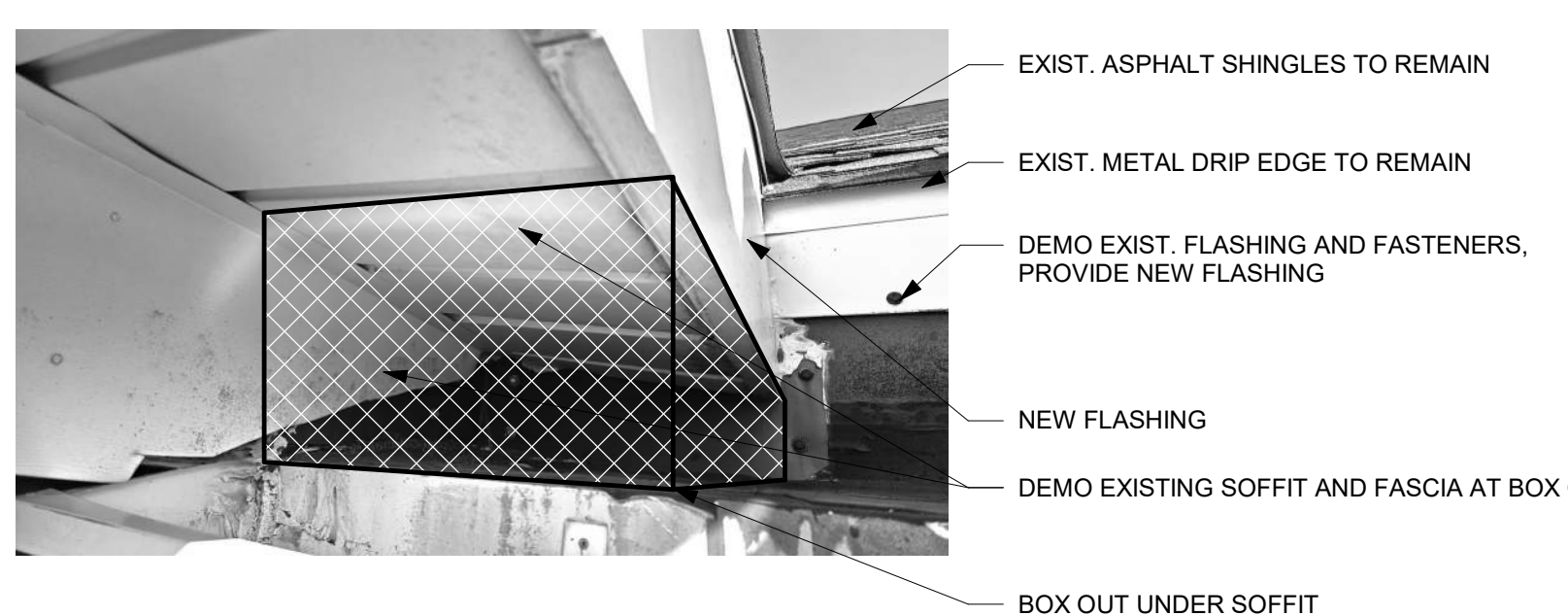
R13 EXISTING ROOF VENTS
12" = 1'-0"



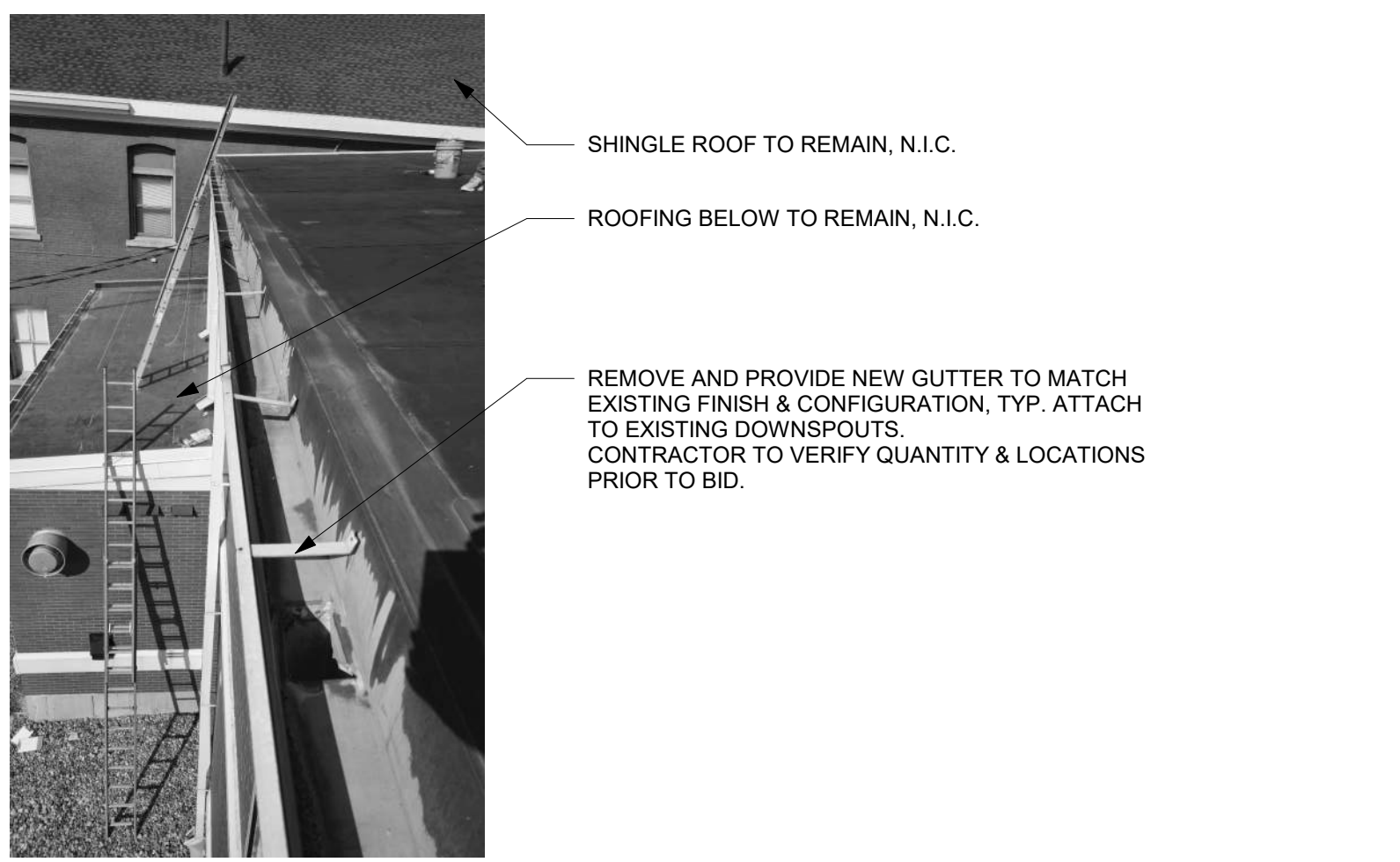
M1 WEST GUTTER AND UPPER ROOF CONDITION
12" = 1'-0"



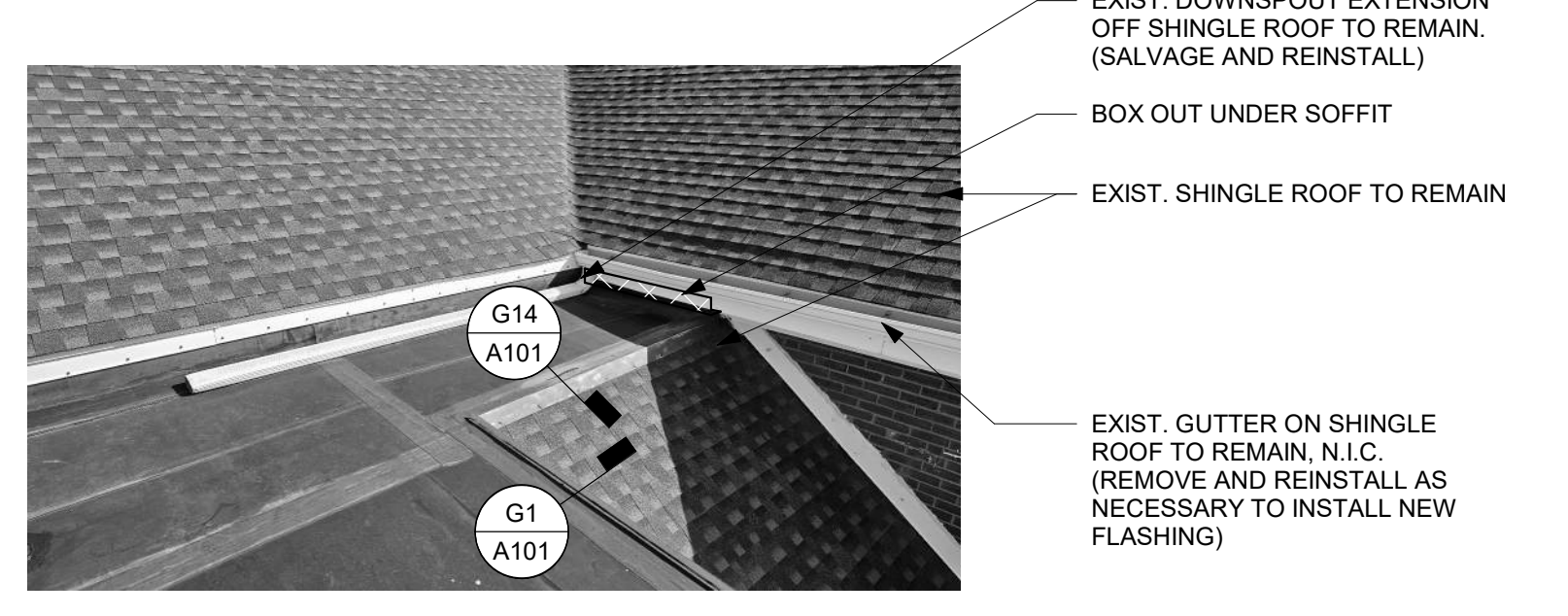
M7 NORTHWEST SOFFIT AND EXISTING SHINGLE ROOF CONDITION
12" = 1'-0"



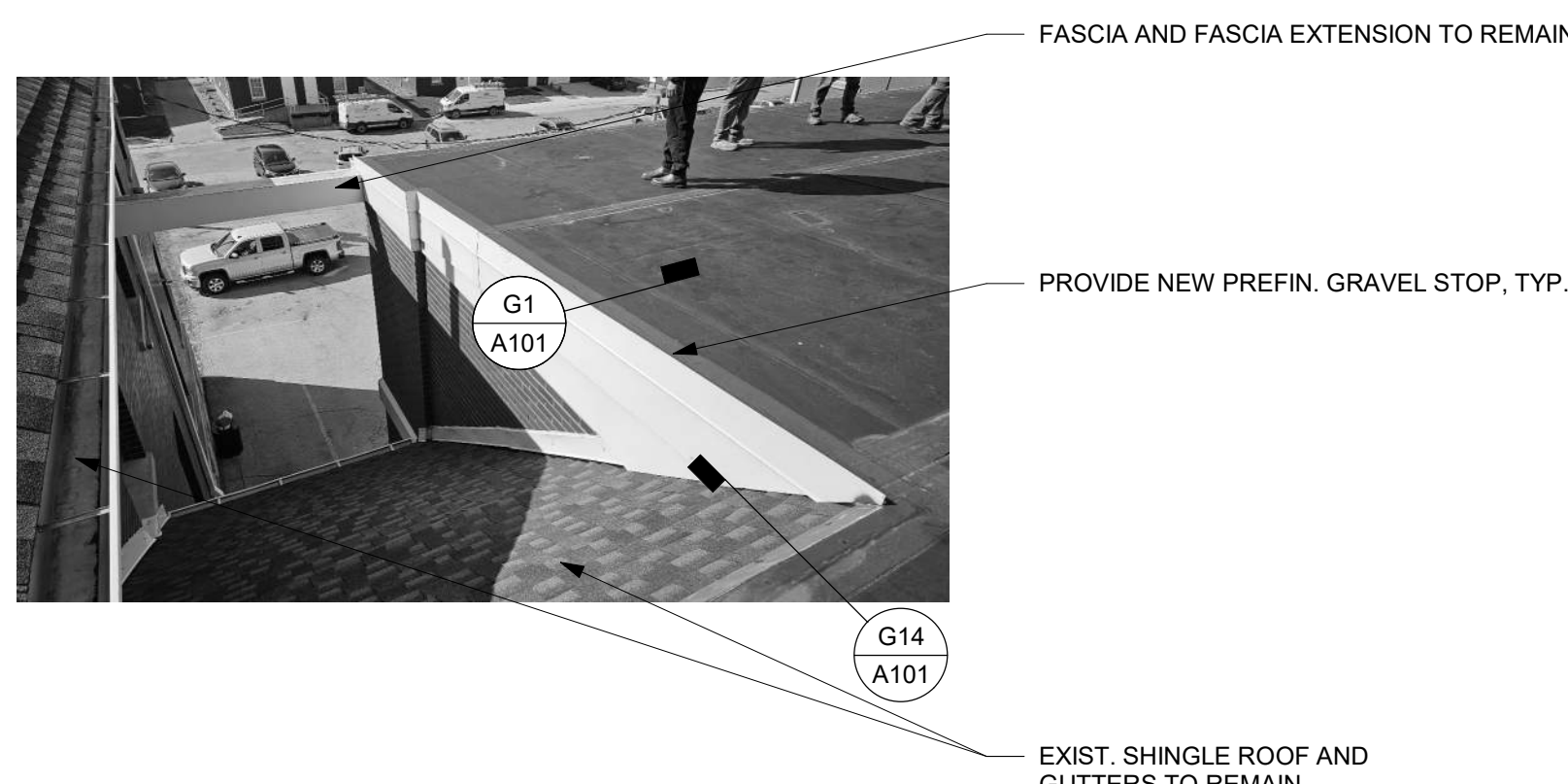
M13 SOFFIT CONDITION
12" = 1'-0"



G1 EXISTING GUTTER CONDITION
12" = 1'-0"



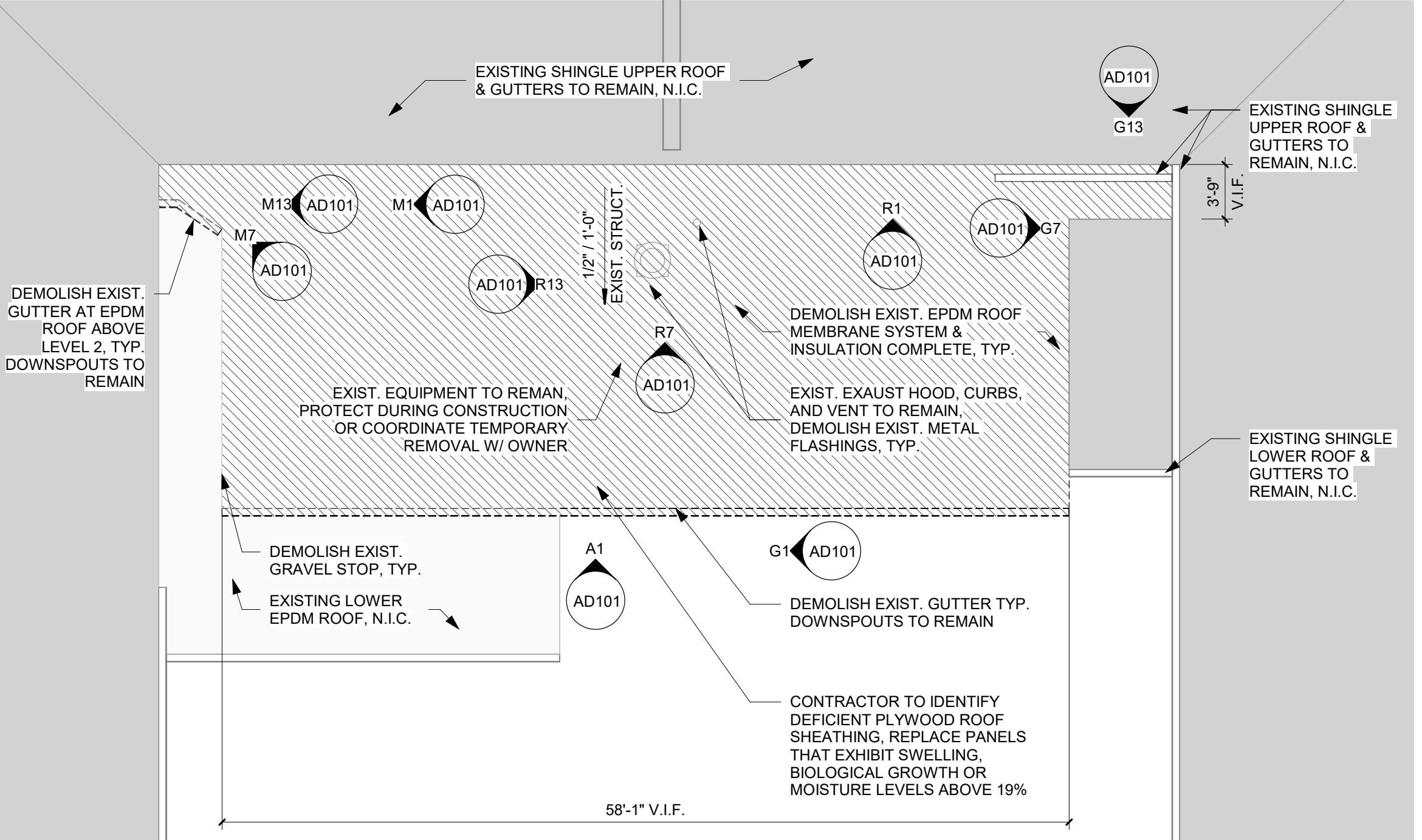
G7 UPPER SHINGLE ROOF GUTTER
12" = 1'-0"



G13 LOWER SHINGLE ROOF
12" = 1'-0"



A1 SOUTH ELEVATION
12" = 1'-0"



A11 DEMO ROOF PLAN
1/8" = 1'-0"

STANDARD SYMBOLS	STANDARD ABBREVIATIONS	GENERAL NOTES
(R1)	# NUMBER	1. DIMENSIONS ARE MEASURED FACE-OF-FINISH TO FACE-OF-FINISH OR ROUGH MASONRY OPENING UNLESS NOTED OTHERWISE - TYPICAL FOR ALL DRAWINGS.
(A201)	ACM ALUMINUM COMPOSITE METAL PANEL	2. FIELD VERIFY ALL DIMENSIONS AND EXISTING CONDITIONS - TYPICAL FOR ALL DRAWINGS.
(A101)	ACP ACoustICAL CeILING PANEL	3. IN THE EVENT OF A DISCREPANCY BETWEEN ARCHITECTURAL AND CONSULTANT DRAWINGS, NOTIFY ARCHITECT IMMEDIATELY PRIOR TO COMMENCING WORK - TYPICAL FOR ALL DRAWINGS.
(A101)	ALUM ALUMINUM	4. THIS FACILITY WILL REMAIN IN OPERATION THROUGHOUT THE DURATION OF THE PROJECT. COORDINATE ALL ROOFING ACTIVITIES WITH THE OWNER TO MINIMIZE INTERFERENCE OF DAILY OPERATIONS.
(A101)	AWP ACoustic WALL PANEL	5. CONTRACTOR TO IDENTIFY AND REPLACE DEFICIENT PLYWOOD ROOF SHEATHING, REPLACE PANELS THAT EXHIBIT SWELLING, BIOLOGICAL GROWTH OR MOISTURE LEVELS ABOVE 19%. CONFIRM LOCATIONS W/ ARCHITECT PRIOR TO REPLACING.
(A101)	BAS BUILDING AUTOMATION SYSTEM	6. VERIFY LOCATIONS OF ALL ROOF PENETRATIONS. PROVIDE BOOTS, FLASHING AND OTHER ACCESSORIES REQUIRED TO PROVIDE A COMPLETE, WATER TIGHT WARRANTED SYSTEM.
(A101)	BM BENCH MARK	7. REPLACE ONLY THE AMOUNT OF ROOFING THAT CAN BE COMPLETED AND MADE WEATHER TIGHT IN A SINGLE WORK DAY. BUILDING INTERIOR MUST BE PROTECTED FROM INFLUENCE WEATHER AT THE END OF EACH WORK DAY.
(A101)	BOC BACK OF CURB	8. PROTECT SECTIONS OF THE ROOF THAT HAVE ALREADY BEEN INSTALLED, ARE EXISTING TO REMAIN OR ARE NOT IN CONTRACT FROM DAMAGE. DO NOT USE THE ROOF FOR A STAGING AREA UNLESS ADEQUATE FACTORY MUTUAL APPROVED PROTECTION MEASURES ARE USED TO PROTECT THE ROOF INSTALLATION.
(A101)	BOW BOTTOM OF WALL	9. COORDINATE INSTALLATION OF ROOFING MEMBRANE WITH EXISTING MECHANICAL EQUIPMENT.
(A101)	BR BUMPER GUARD/BUMPER RAIL	10. REMOVE EXISTING ROOFTOP VENTS AND OTHER ITEMS ONLY AS NECESSARY TO INSTALL NEW FLASHINGS AND ROOF MEMBRANE.
(A101)	BS BOTTOM OF STAIR	11. VERIFY ALL EXISTING ROOF DIMENSIONS, WIDTHS & HEIGHTS OF METAL EDGING CONDITIONS PRIOR TO BID.
(A101)	C CHANNEL	12. PROVIDE NEW METAL FLASHINGS AT ALL PENETRATIONS AND PERIMETERS.
(A101)	CC CURBLE CURTAIN	13. INSTALL NEW GUTTERS TO ACCOMMODATE EXISTING DOWNSPOUT LOCATIONS.
(A101)	CFCI CONTRACTOR FURNISHED CONTRACTOR INSTALLED	
(A101)	CG CAST-IN-PLACE	
(A101)	CIP CONTROL JOINT	
(A101)	CK CORK FLOORING	
(A101)	CL CENTER LINE	
(A101)	CLG CONSTRUCTION LIMITS LINE	
(A101)	CMU CONCRETE MASONRY UNIT	
(A101)	CO CLEANOUT	
(A101)	CONC CONCRETE	
(A101)	CONT CONTINUOUS	
(A101)	CPT CARPET	
(A101)	CRK CORE	
(A101)	DEM DEMOLISH / DEMOLITION	
(A101)	DF DRINKING FOUNTAIN	
(A101)	DI DIAMETER	
(A101)	DN DOWN	
(A101)	DS DOWNSPOUT	
(A101)	EC ELECTRICAL CONTRACTOR	
(A101)	EIFS EXTERIOR INSULATION FINISH SYSTEM	
(A101)	EJ EXPANSION JOINT	
(A101)	ELEC ELECTRICAL	
(A101)	ELEV ELEVATION	
(A101)	EPF EPOXY FLOORING	
(A101)	EPT EPOXY PAINT	
(A101)	EQU EQUAL	
(A101)	EWC ELECTRIC WATER COOLER	
(A101)	EX EXISTING	
(A101)	FAF FLUID APPLIED FLOORING	
(A101)	FD FLOOR DRAIN	
(A101)	FF FACTORY FINISH	
(A101)	FFE FINISHED FLOOR ELEVATION	
(A101)	FDI FACE OF DRAIN	
(A101)	FOF FACE OF FINISH	
(A101)	FOG FACE OF GLAZING	
(A101)	FOE FACE OF EXISTING FORCED PANEL	
(A101)	GA GAUGE	
(A101)	GALV GALVANIZED	
(A101)	GC GENERAL CONTRACTOR	
(A101)	GHM GALVANIZED HOLLOW METAL	
(A101)	GL GLASS	
(A101)	GT GROUT	
(A101)	GWB GYPSUM WALL BOARD	
(A101)	GYP GYPSUM	
(A101)	HORZ HORIZONTAL	
(A101)	HM HOLLOW METAL	
(A101)	HT HEIGHT	
(A101)	HVAC HEATING/VENTING/AIR CONDITIONING	
(A101)	ID INSIDE DIAMETER	
(A101)	L ANGLE	
(A101)	L/LBS POUND / POUNDS	
(A101)	LVT LUXURY VINYL TILE	
(A101)	MAX MAXIMUM	
(A101)	MB MARKERBOARD	
(A101)	MC MECHANICAL CONTRACTOR	
(A101)	MDF MEDIUM DENSITY FIBERBOARD	
(A101)	MFR MANUFACTURERS	
(A101)	MH MANHOLE	
(A101)	MIL MIL THICKNESS	
(A101)	MIN MINIMUM	
(A101)	MO MASONRY OPENING	
(A101)	NIC NOT IN CONTRACT	
(A101)	NTS NOT TO SCALE	
(A101)	OC ON CENTER	
(A101)	OA OVERALL	
(A101)	OD OUTSIDE DIAMETER	
(A101)	OFCI OWNER FURNISHED CONTRACTOR	
(A101)	OFCO OWNER FURNISHED CONTRACTOR	
(A101)	OH OVERHEAD	
(A101)	ORD OVERFLOW ROOF DRAIN	
(A101)	OTS OPEN TO STRUCTURE	
(A101)	OTC OVERLAY CERAMIC TILE	
(A101)	PL PLATE	
(A101)	PLAM PLASTIC LAMINATE	
(A101)	PP POLYMER PANEL	
(A101)	PVC POLY VINYL CHLORIDE	
(A101)	PT PAINT	
(A101)	QT QUARTZ	
(A101)	RAD RADIUS	
(A101)	RAF RESILIENT ATHLETIC FLOORING	
(A101)	RB RESILIENT BASE	
(A101)	RD ROOF DRAIN	
(A101)	RES RESIN	
(A101)	REV REVISION	
(A101)	RO ROUGH OPENING	
(A101)	R0W RIGHT-OF-WAY	
(A101)	RSF RESILIENT SHEET FLOORING	
(A101)	RST RESILIENT STAIR TREAD	
(A101)	RTF RESILIENT TILE FLOORING	
(A101)	RUB RUBBER	
(A101)	SC SEALED CONCRETE	
(A101)	SF SQUARE FEET	
(A101)	SIM SIMILAR	
(A101)	SS SOLID SURFACE	
(A101)	STN STONE	
(A101)	STL STAINLESS STEEL	
(A101)	SUSP SUSPENDED	
(A101)	T TILE	
(A101)	T&G TONGUE AND GROOVE	
(A101)	TG TEMPERED GLASS	
(A101)	TOC TOP OF CURB	
(A101)	TOM TOP OF MASONRY	
(A101)	TOS TOP OF SLAB / TOP OF STEEL	
(A101)	TOW TOP OF WALL	
(A101)	TP TOILET PARTITION	
(A101)	TPF TACKABLE PANEL FABRIC	
(A101)	TRZ TERRAZZO	
(A101)	TS TOP OF STAIR	
(A101)	TYP TYPICAL	
(A101)	UL UNDERWRITERS LABORATORIES, INC.	
(A101)	UNO UNLESS NOTED OTHERWISE	
(A101)	VERT VERTICAL	
(A101)	VIF VERIFY IN FIELD	
(A101)	WB WALL BASE	
(A101)	WC WALL COVERING	
(A101)	W/ WITH	
(A101)	W/O WITHOUT	
(A101)	WD WOOD	
(A101)	WGH WALLGUARD HANDRAIL	
(A101)	WM WALK-OFF MAT	
(A101)	WP WALL PROTECTION	
(A101)	WT WINDOW TREATMENT	
(A101)	WWF WELDED WIRE FABRIC	

ROOF LEGEND	DRAWING REVISION

OPN ARCHITECTS
 100 Court Ave., Suite 100
 Des Moines, IA 50309
 P: 515-309-0722
 www.opnarchitects.com

All reports, plans, specifications, computer files, field data, notes and other documents and instruments prepared by OPN Architects, Inc. are instruments of service that remain the property of OPN Architects, Inc. OPN Architects, Inc. shall retain all copyright law, statutory and other reserved rights, including the copyright therein.

Owner
STATE OF IOWA - DOC FIFTH JUDICIAL DISTRICT
 1305 E WALNUT ST
 DES MOINES, IA 50319

Project
9375-00 - DOC 5JD FT DES MOINES BLDG 65-66 ROOF REPLACEMENT
 68 TRAYER ST
 DES MOINES, IA 50315

Construction Manager
SAMUELS GROUP
 2929 WESTOWN PARKWAY, SUITE 200
 WEST DES MOINES, IA 50266
 P. 515-288-0467

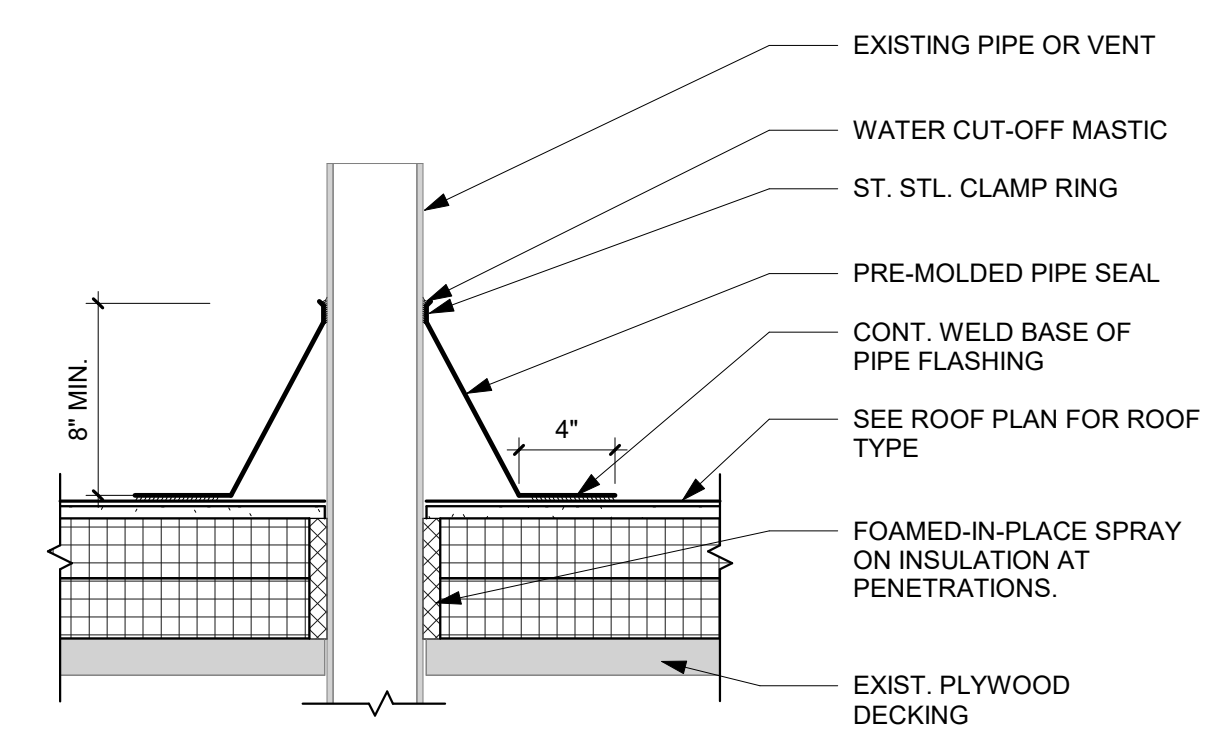
© 2024 OPN Architects, Inc.

Revision	Description	Date

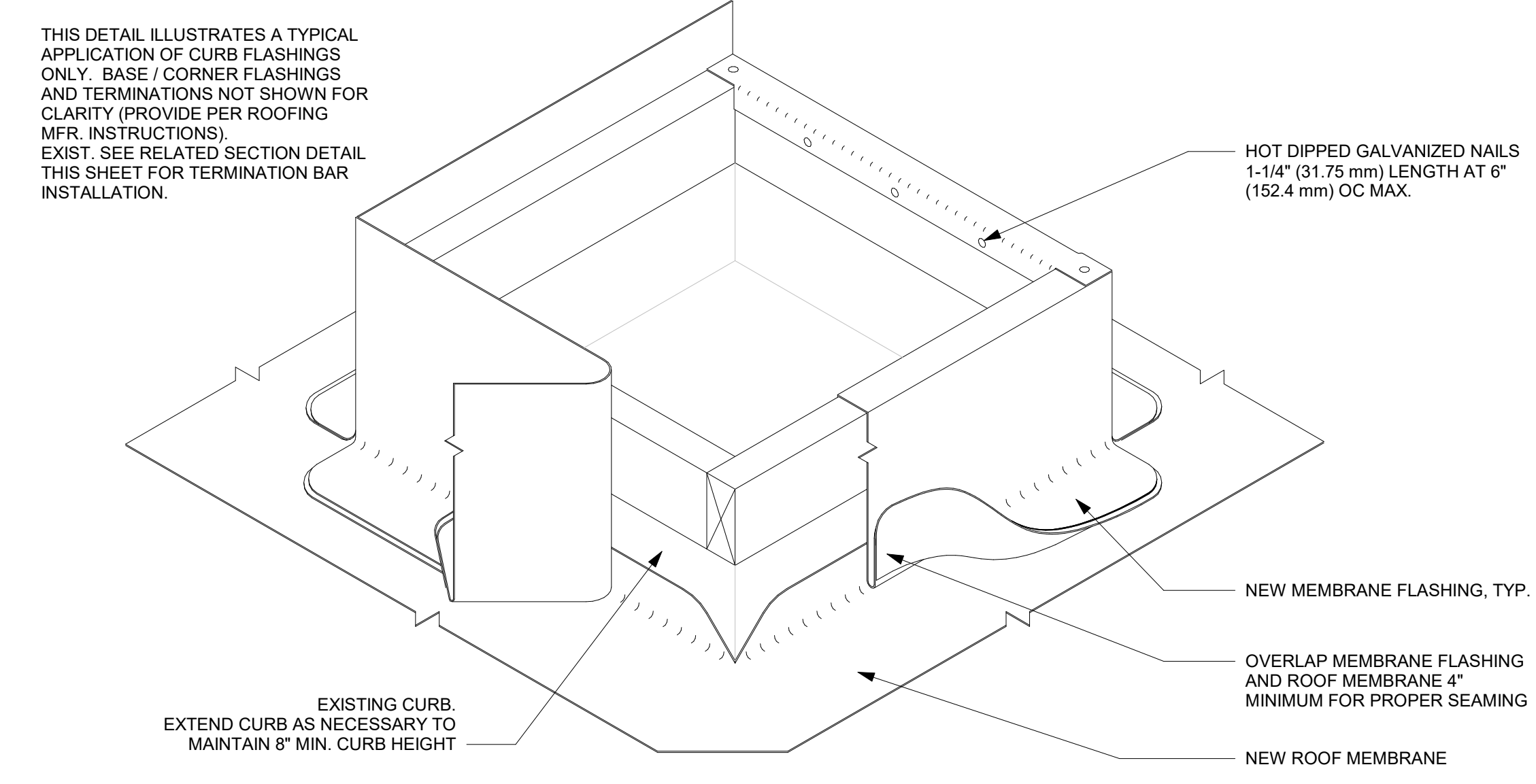
ROOF TYPES LEGEND

R-1 **SINGLE PLY MEMBRANE**
 - 60 MIL EPDM ROOF MEMBRANE FULLY ADHERED TO COVERBOARD
 - 1/2" HIGH DENSITY POLYISOCYANURATE COVERBOARD
 - (2) LAYERS 2 1/2" POLYISOCYANURATE RIGID ROOF INSULATION - MIN R30
 - VAPOR BARRIER
 - EXISTING PLYWOOD ROOF DECK

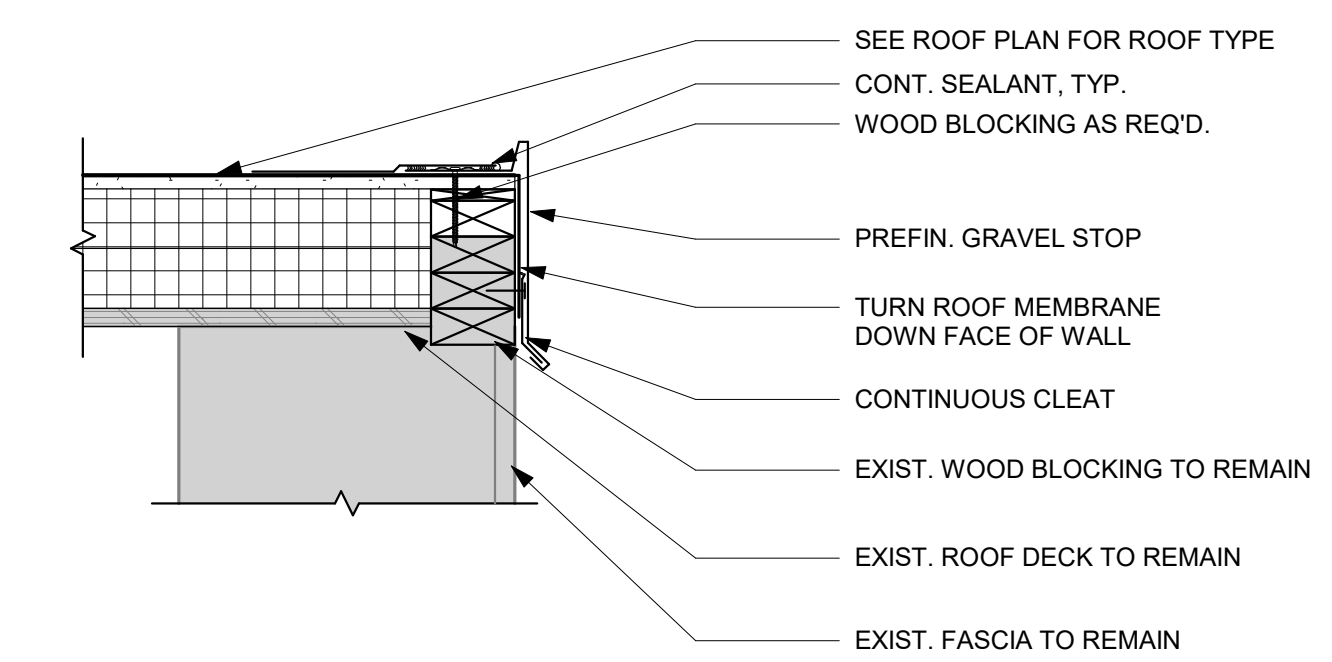
NOTE:
 CONTRACTOR TO VERIFY CONDITION OF EXISTING ROOF DECKING. REPLACE PANELS EXHIBITING SWELLING, BIOLOGICAL GROWTH, OR HIGH MOISTURE CONTENT (ABOVE 19%)



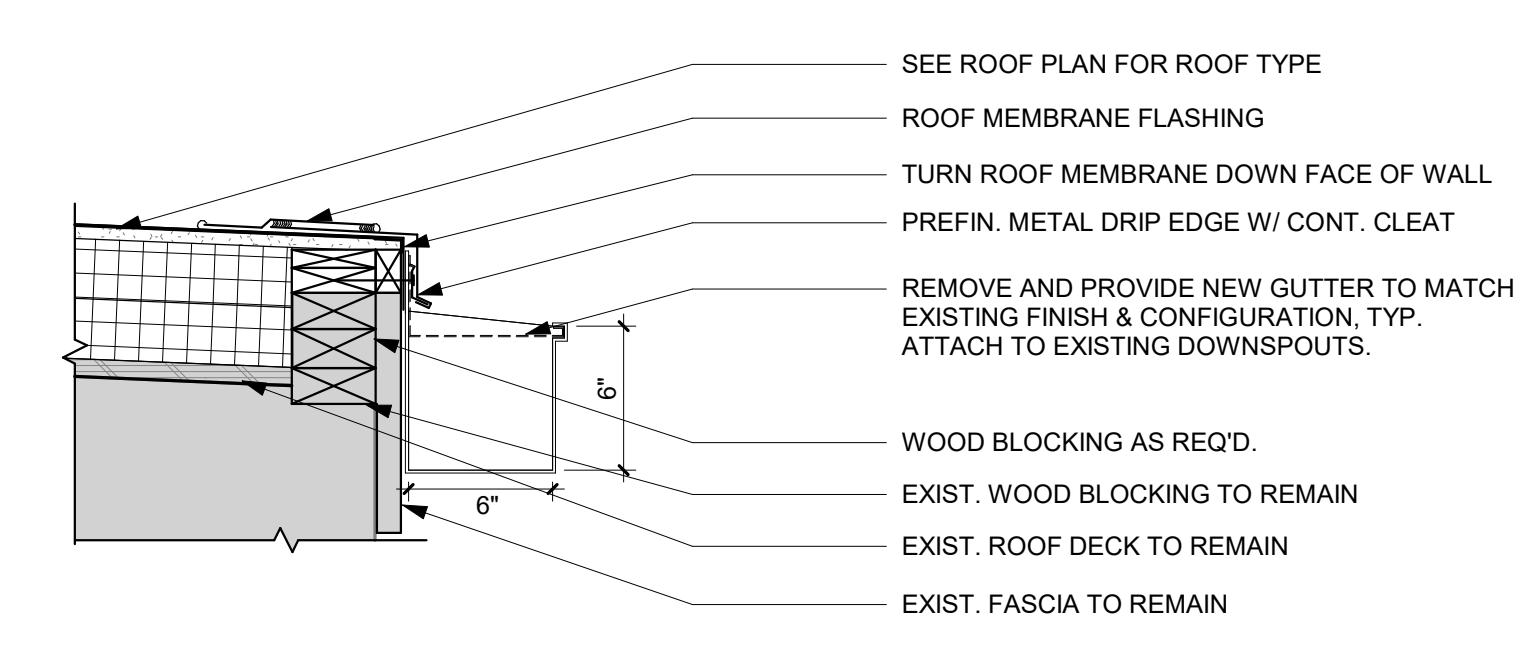
L1 SECTION DETAIL - VENT PIPE BOOT FLASHING
 1 1/2" = 1'-0"



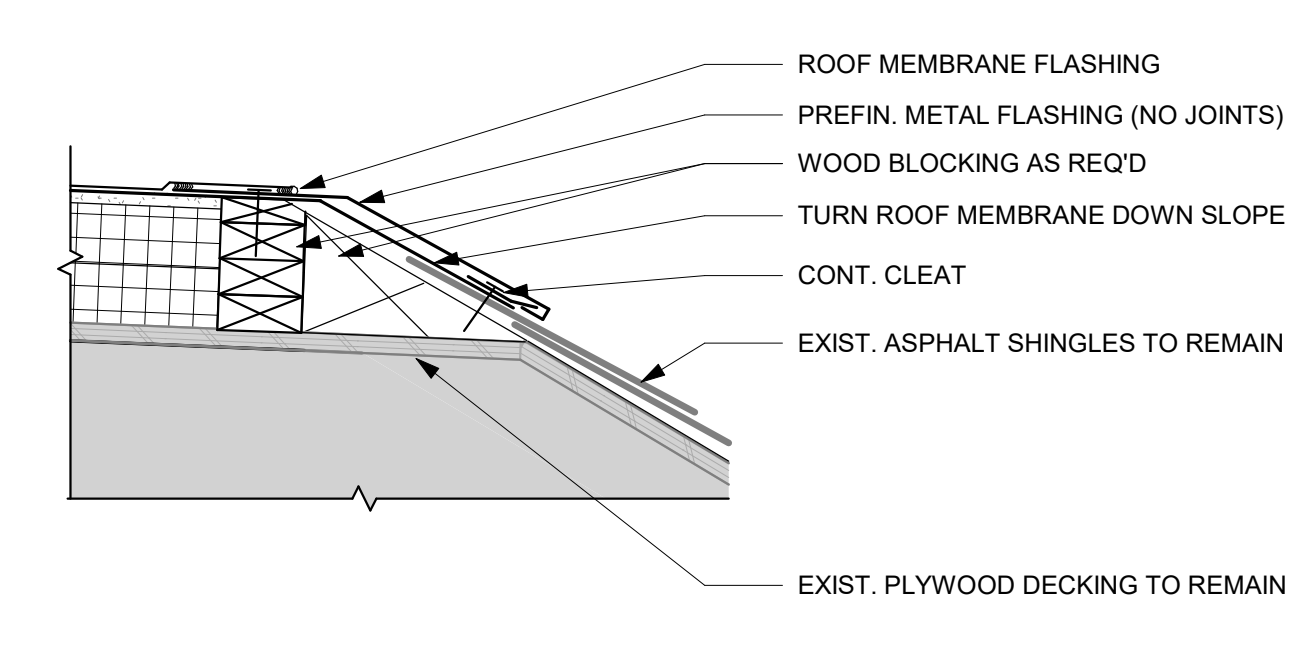
L7 FLASHING APPLICATION ILLUSTRATION
 6" = 1'-0"



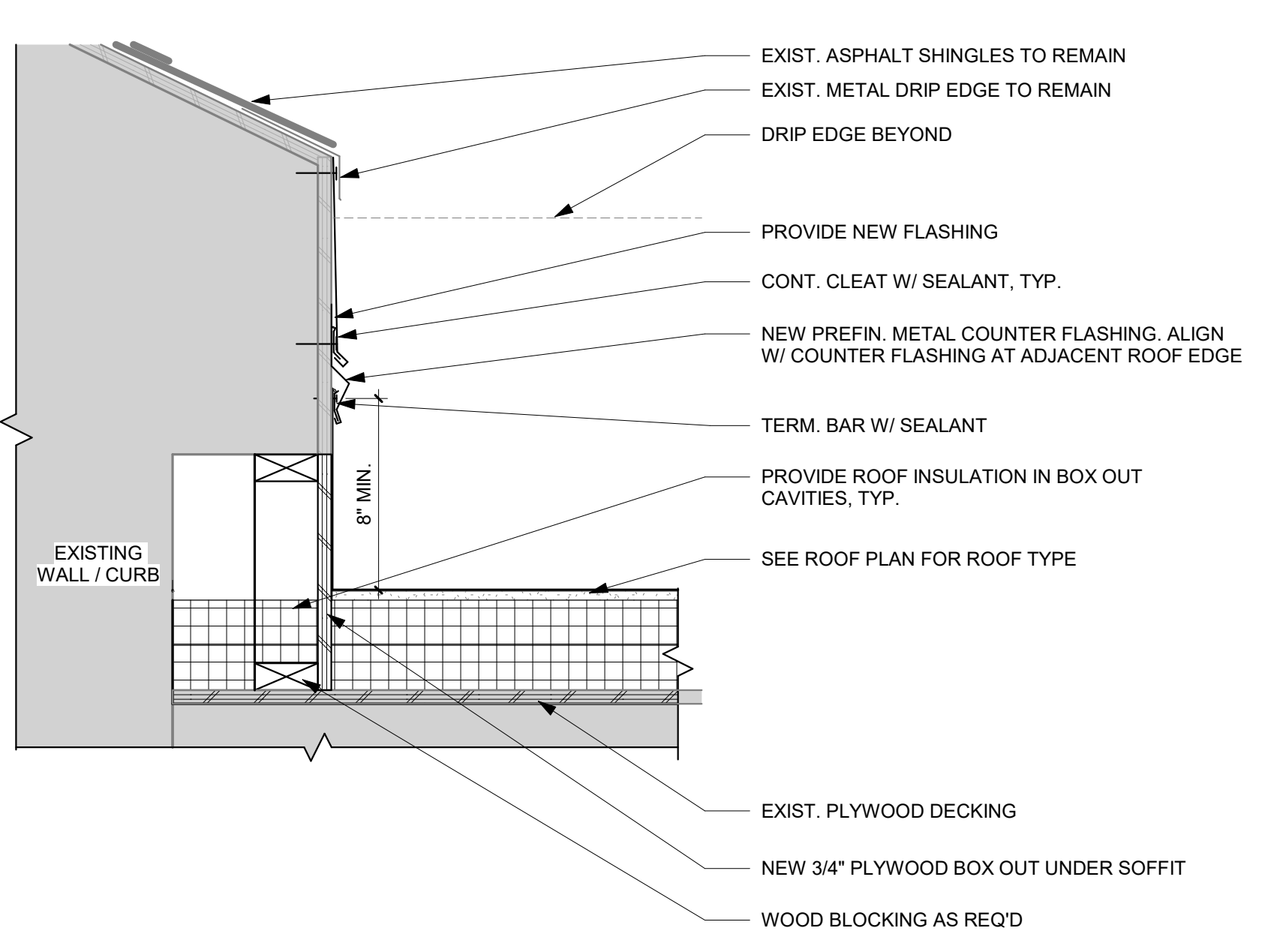
G1 SECTION DETAIL - GRAVEL STOP
 1 1/2" = 1'-0"



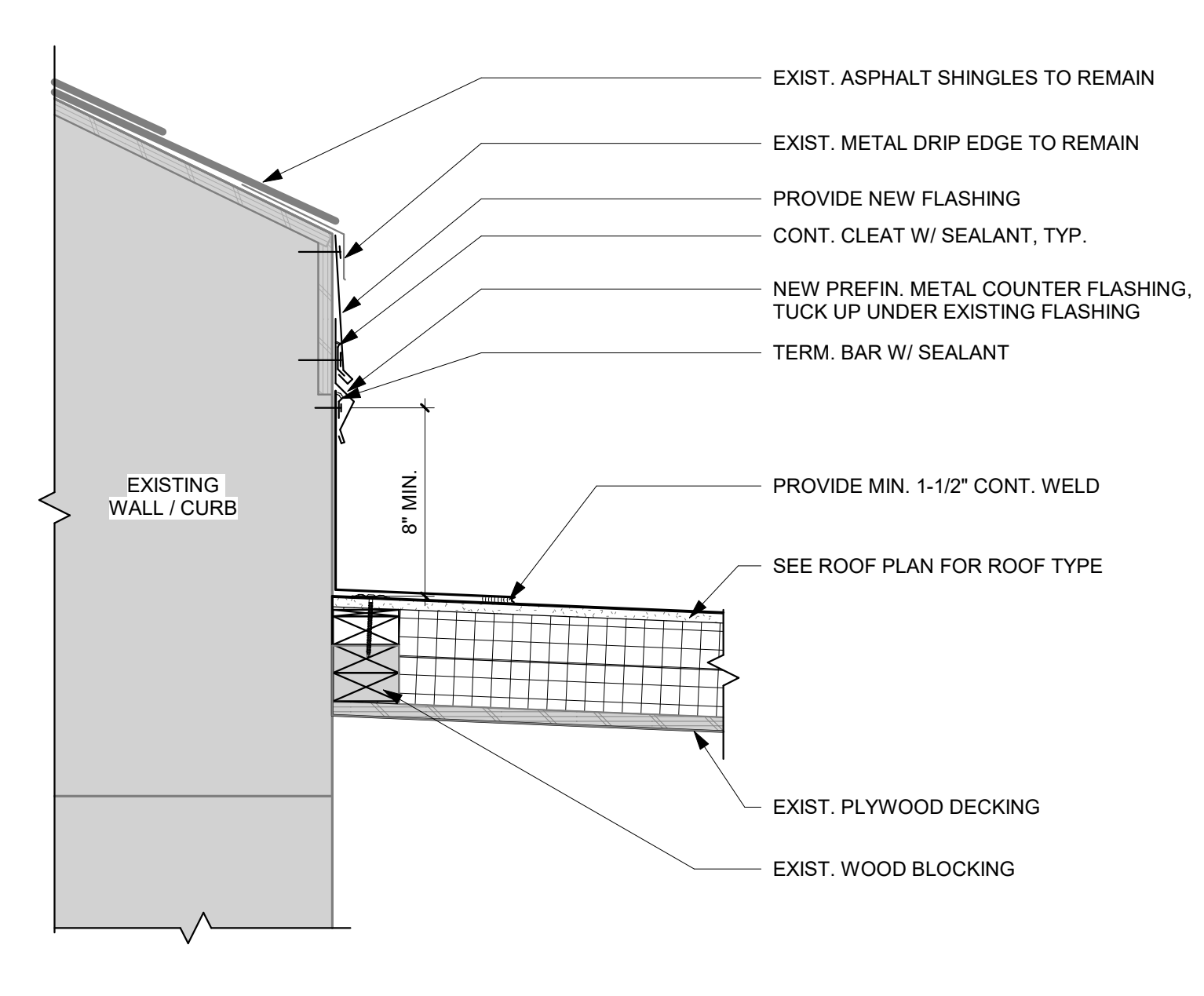
G7 SECTION DETAIL - GUTTER
 1 1/2" = 1'-0"



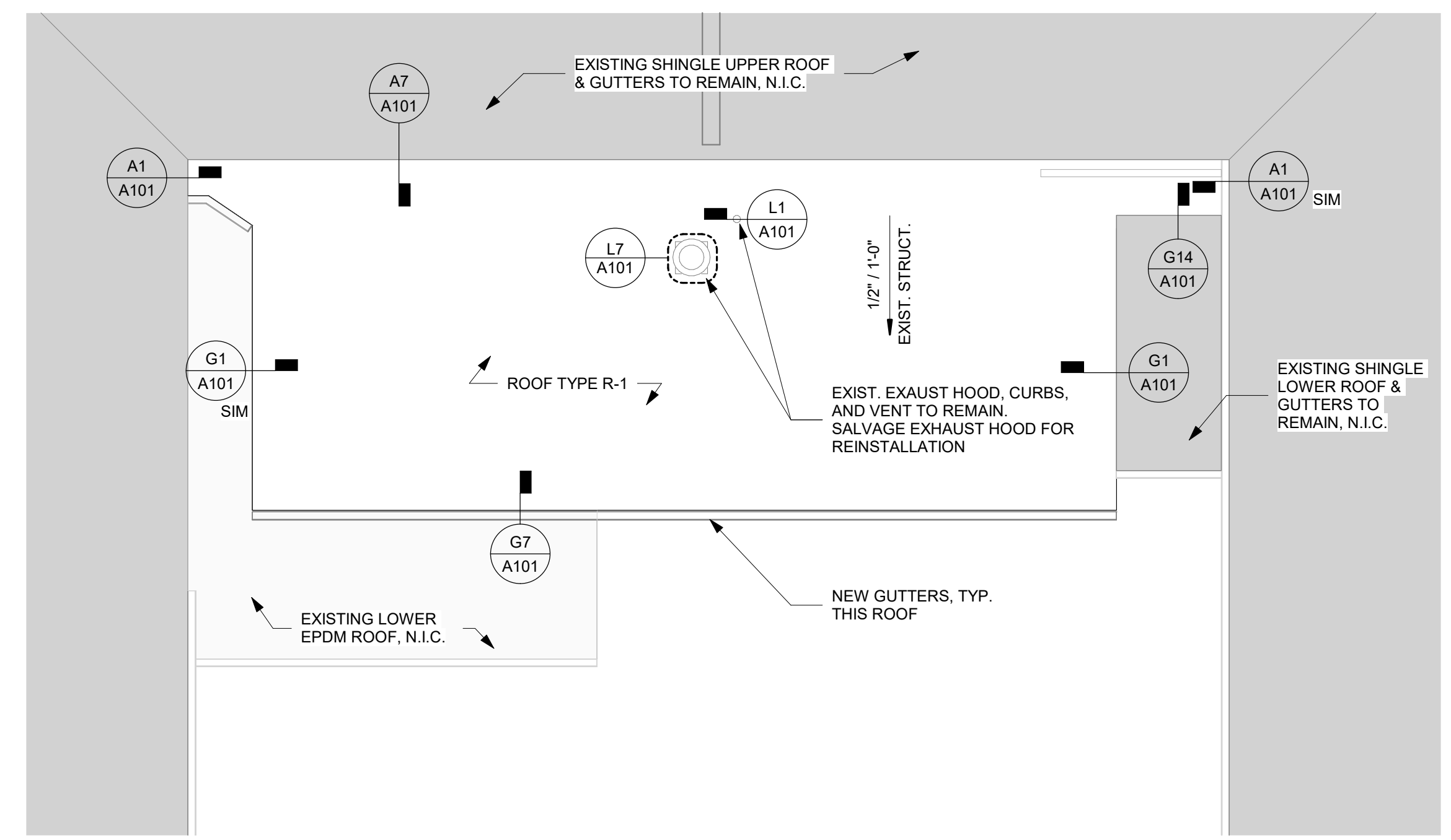
G14 SECTION DETAIL - MEMBRANE TO SHINGLE
 1 1/2" = 1'-0"



A1 SECTION DETAIL - SHINGLE ROOF EAVE BOX OUT
 1 1/2" = 1'-0"



A7 SECTION DETAIL - SHINGLE ROOF / WALL / CURB FLASHING
 1 1/2" = 1'-0"



A17 ROOF PLAN
 1/8" = 1'-0"

Key Plan

Revision	Description	Date