



Spoil Location

Park Office

Project Location

NOT TO SCALE

25' Radius W/1' Lug

10' Radius W/1' Lug

14' Wide, 6-inch PCC Paving.
1% cross slope

Connect paving to garage door

Removable Bollards

10' Radius

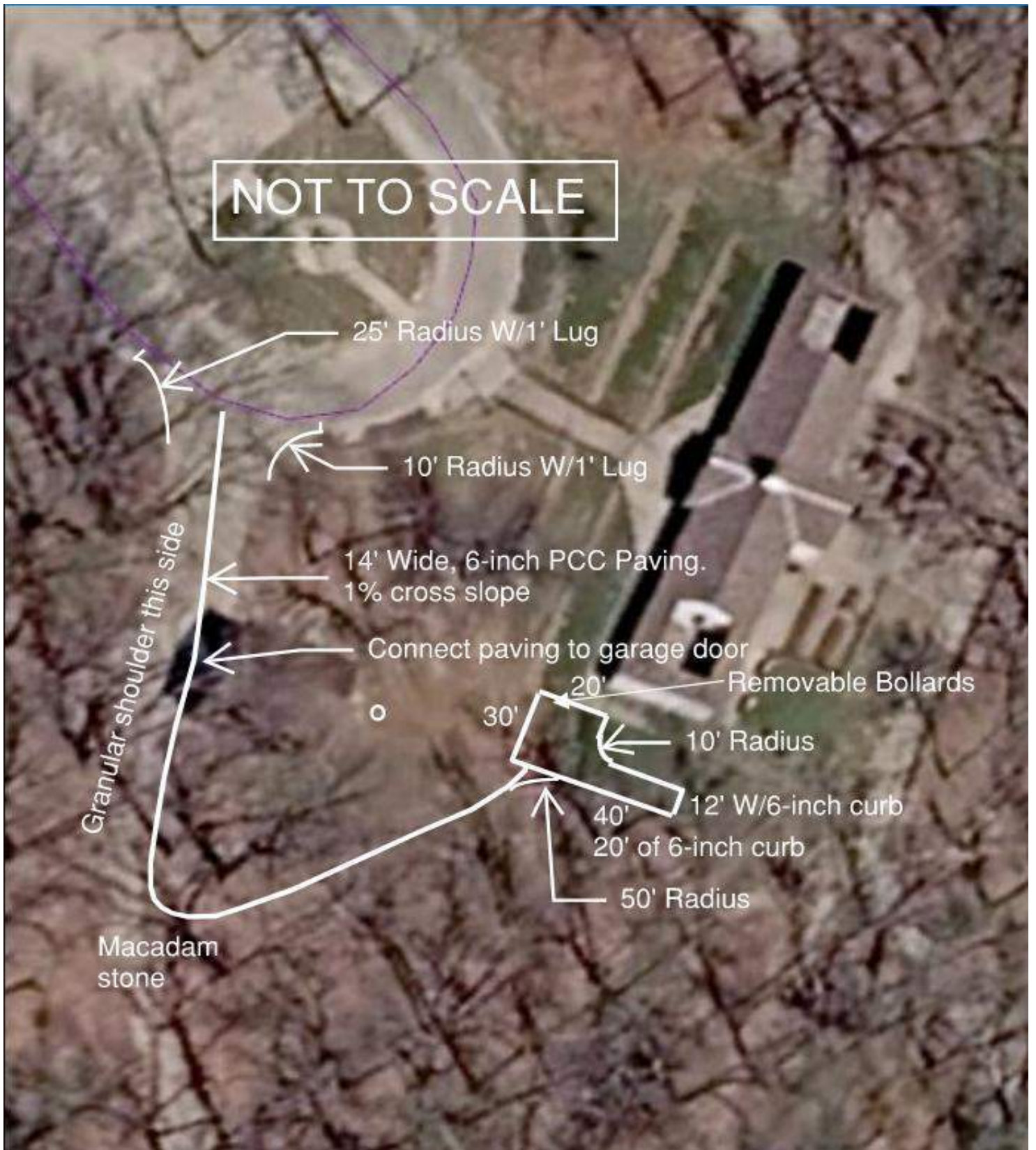
12' W/6-inch curb


20' of 6-inch curb

50' Radius

Granular shoulder this side

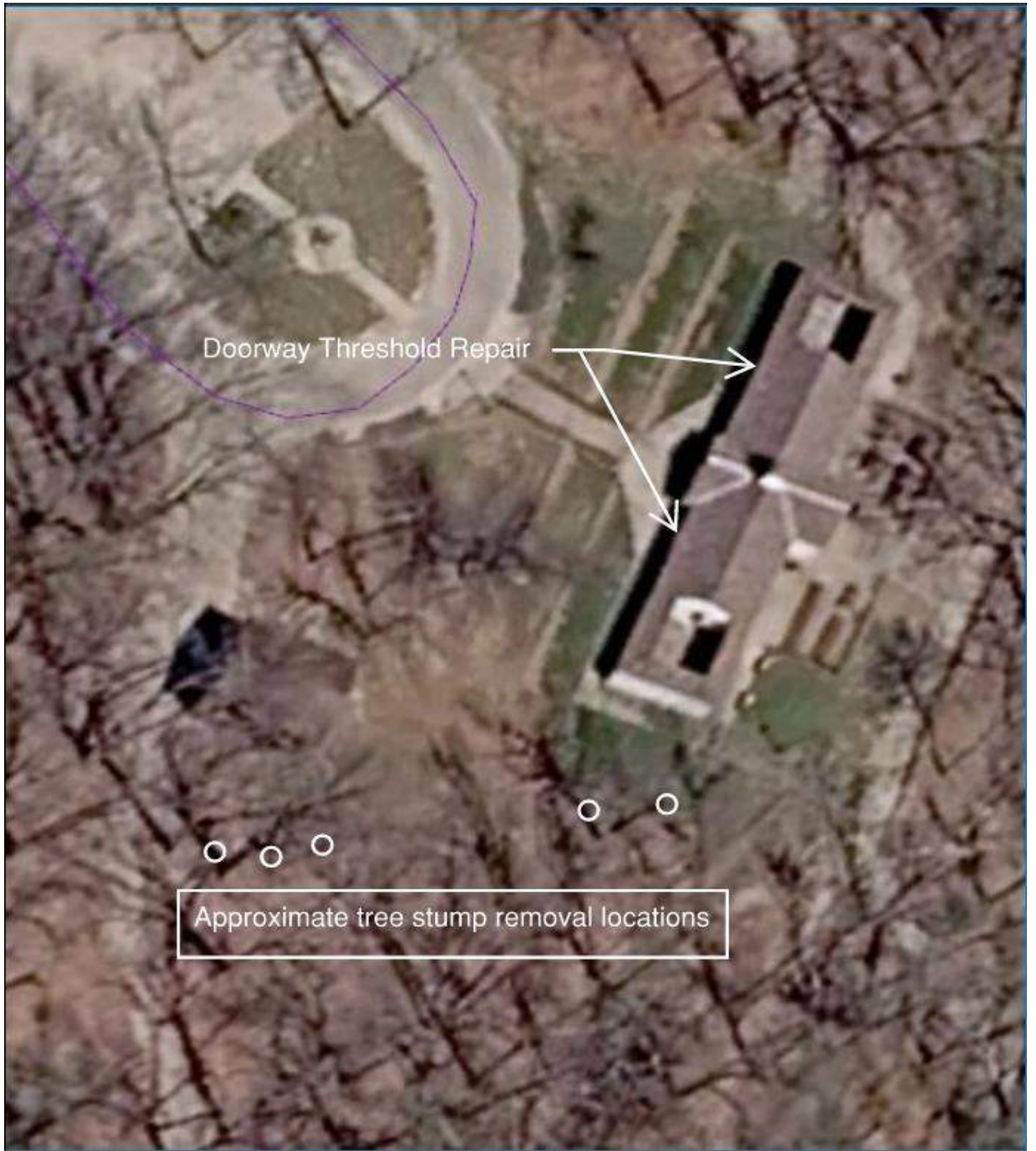
Macadam stone





4" Perforated Tile Line W/Sock
daylight past trail

6" Perforated Tile Line W/Sock
daylight into ditch



Doorway Threshold Repair

Approximate tree stump removal locations

LACEY-KEOSAUQUA STATE PARK
 ACCESSIBILITY IMPROVEMENTS
 DNR Project #25-06-89-04

Item No.	Description	Quantity	Unit
1	2102 - SPECIAL BACKFILL	140	TON
2	2102- EXCAVATION, CL 10, GRAVEL REMOVAL	60	CY
3	2102- EXCAVATION, CL 10, WASTE	105	CY
4	2121 - GRANULAR SHOULDER	18	TON
5	2210 - MACADAM STONE	5	TON
6	2301 - STD/S-F PCC PAV'T, CL C CL 3, 6"	448	SY
7	2301 - 6 - INCH PCC CURB	32	LF
8	2533 - MOBILIZATION	1	LS
9	2599 - HMA SAW CUT	50	LF
10	2599 - 4-INCH TILE LINE W/SOCK	85	LF
11	2599 - 6-INCH TILE LINE W/SOCK	120	LF
12	2599 - ADA SIGNAGE	1	LS
13	2599 - 4 - INCH REMOVABLE BOLLARD	2	EA
14	2599 - DOORWAY THRESHOLD REPAIR	2	EA
15	2599 - STUMP REMOVAL	5	EA
16	2601 - SEED+FERTILIZE (RURAL)	0.3	ACRE

Bid
 Item

ESTIMATE REFERENCE INFORMATION

- 1 6-inches under all new paving. Quantities based on a 1-foot wider footprint.
DOT approved source.
- 2 Remove the top 6-inches of existing gravel.
Stockpile at location shown.
- 3 Remove an additional 6-inches below gravel, and 12-inches in areas without
gravel.
Use for fill in parking areas as needed.
Stockpile any excess spoil at location shown.
- 4 Place along low side of paving as shown.
6-inch depth, 2-feet wide.
DOT approved source.
- 5 Place as shown.
DOT approved source.

ERI SECTION CONTINUED ON NEXT PAGE

- 6 14-foot wide roadway with radii and parking areas.
6-inch depth.
Use Class C mix.
1% cross slope as shown.
Burlap drap or broom finish before curing.
Saw centerline of roadway and 10' panel lengths.
Saw parking area into 10' sections.
DOT approved source.
- 7 Pour 6-inch curb (vertical) as shown.
- 9 Cut 4" - 6" off existing HMA roadway as shown.
Dispose of material offsite.
- 10 Install 4-inch preforated tile line with sock as shown.
Daylight past trail.
16" deep trench. 2-inches clean rock on bottom, 4-inches on top. Fill remaining with dirt.
Rock is incidental to this item.
- 11 Install 6-inch preforated tile line with sock as shown.
Daylight into ditch
18" deep trench. 2-inches clean rock on bottom, 4-inches on top. Fill remaining with dirt.
Rock is incidental to this item.
- 12 Supply and install the ADA signs as shown.
DNR Field Engineer will mark sign location.
- 13 Supply and install removable bollards as shown.
4" X 36"
"POST GUARD" or approved equal.
DNR Field Engineer will mark bollard locations.
- 14 Remove and replace any loose/damaged mortar/grout inbetween stones.
Match existing mortar/grout as close as possible
Non-shrink grout may be used for joints in concrete..
Grind/bush hammer down high lip to make an ADA compliant transition.
- 15 Remove and dispose of existing stumps as shown.
Approximate sizes are: 36", 22", 20", 15" and 12"
Dispose of offsite.
- 16 Seed and fertilize all disturbed areas.
Rural mix.
DOT approved source.



Roadway to be paved. Cut existing HMA to get a clean edge/transition between HMA and PCC.



Paving will follow “approximate” existing centerline. Cross slope of 1% to the right in photo. Granular shoulder rock to be placed on RH side in photo.



New paving will closely follow existing grade.



Make a transition to connect PCC paving to existing overhead door entrance.



Sharp left past tree. Tree will be cut down. One of the stump removals.

Macadam goes on the gravel road after the paving makes the LH turn.



More of the sharp left. There are 3 trees on the left, all will be stump removals.



2nd and 3rd stump removal locations on the left.

There is a small rise in the roadway that will need to be knocked down into the small swale in front of it.



View from on top of the small rise. Move high area to existing low spot (swale) in front.

Tree in the middle and the one to the right are stump removals 4 and 5.





Low area that needs fill. New paving/parking area will extend to nearly the retaining wall.

Tile lines will start near the stairs in the center.

All PCC parking area paving to be 1% away from building.



View looking back from area in need of fill (swale).



Existing low area swale.







MUTCD R7-8
SOLID GREEN LEGEND
AND BORDER
REFLECTIVE WHITE
BACKGROUND
WHITE ACCESSIBILITY
SYMBOL ON
BLUE BACKGROUND



1'-6"

MUTCD R7-8P
SOLID GREEN LEGEND
AND BORDER
REFLECTIVE WHITE
BACKGROUND
REQUIRED FOR VAN
ACCESSIBLE
SPACES ONLY



6"

SQUARE POST 2-1/4 IN.

SQUARE ANCHOR BASE
2-1/2 IN. LOCATED AT TOP
OF BOLLARD (IF
EQUIPPED) OR TOP OF
GROUND SURFACE

7'

USE 6" PIPE BOLLARD
FILLED W/CONCRETE
AND PAINTED TRAFFIC
YELLOW ONLY WHEN
SIGN IS IN PAVED AREA
OR SIDEWALK

3'

SLOPE TOP OF
CONCRETE

GROUND/PAVING
SURFACE

3'

3500 P.S.I. P.C.
CONCRETE
(WHEN PIPE
BOLLARD IS NOT
INSTALLED,
FOUNDATION
NOT REQUIRED)

6"

1'-6"

NOTES

1. 12"x18" ACCESSIBILITY SIGN (R7-8) SHALL BE MOUNTED 7' FROM FINISH GRADE TO BOTTOM EDGE OF SIGN FACE. MOUNTING HEIGHT MAY BE REDUCED TO 5' IF PLACED IN A LANDSCAPE AREA IN WHICH PEDESTRIANS ARE NOT EXPECTED TO USE.
2. BOLLARD MAY BE OMITTED IF INSTALLED IN LANDSCAPE AREAS. WHEN INSTALLED IN LANDSCAPE AREAS, MOUNTING POST SHALL BE DRIVEN A MINIMUM OF 3' BELOW FINISHED GRADE. ALTERNATE MOUNTING POSTS MUST BE APPROVED BY THE FIELD INSPECTOR PRIOR TO CONSTRUCTION.
3. SIGNAGE SHALL BE INSTALLED IN FRONT OF EACH ACCESSIBLE SPACE, CENTERED ON THE WIDTH OF THE SPACE.
4. REFER TO AMERICANS WITH DISABILITIES ACT AND ARCHITECTURAL BARRIERS ACT ACCESSIBILITY GUIDELINES (ADAAG), LATEST EDITION, FOR REQUIRED NUMBER OF ACCESSIBLE SPACE. PER ADAAG, ONE VAN ACCESSIBLE SPACE SHALL BE PROVIDED, MINIMUM, WITH ADDITIONAL VAN ACCESSIBLE SPACES PER ADAAG REQUIREMENTS.
5. ALL SIGNAGE SHALL BE ENGINEER GRADE .080 ALUMINUM REFLECTIVE SIGN MEETING THE REQUIREMENTS OF THE MUTCD AND ADAAG.

ADA SIGN DETAIL
NOT TO SCALE