

KEYNOTES

1. BATHROOM, REFER TO ENLARGED FLOOR PLAN 02 & 04/A-201 FOR MOUNTING HEIGHTS AND SCHEDULE OF TOILET ACCESSORIES. ALL BATHROOM WALLS TO RECEIVE 1/4" MAPLE BEADBOARD, REFER TO WALL TYPES A-002 & PLUMBING DRAWINGS.
2. BUILT-IN ENCLOSED UPPER STORAGE CABINET (WD-1 & 2). REFER TO MILLWORK SECTION A-600.
3. 3/4" HARD MAPLE PLYWOOD CABINET (WD-1) WITH SOLID WOOD DOOR ON CONCEALED HINGES (WD-2). PROVIDE DECORATIVE HARDWARE WIRE PULLS. REFER TO FINISH SCHEDULE.
4. SMOOTH CONCRETE FLOOR WITH TWO COATS SEALER AND IN-FLOOR HYDRONIC HEAT. REFER TO ROOM FINISH SCHEDULE AND PLUMBING DRAWINGS.
5. KITCHEN UNDER-COUNTER CABINETS (WD-1) AND COUNTER-TOP (QTZ-1). REFER TO FINISH SCHEDULE A-600.
6. TOILET, REFER TO PLUMBING DRAWINGS.
7. UNDERMOUNT LAVATORY WITH QUARTZ COUNTER TOP (QTZ-1), REFER TO PLUMBING DRAWINGS AND FINISH SCHEDULE SHEET A-600.
8. ANDERSEN 100 DOUBLE HUNG WINDOWS AS SCHEDULED, REFER TO FINISH SCHEDULE A-600.
9. DISHWASHER BY OWNER.
10. DOOR AS SCHEDULED, REFER TO FINISH SCHEDULE A-600.
11. TUB & SHOWER SURROUND, REFER TO PLUMBING DRAWINGS.
12. KITCHEN SINK, REFER TO PLUMBING DRAWINGS.
13. SLIDING BARN DOOR, REFER TO DOOR SCHEDULE.

14. INTERIOR PARTITION WALL AS SCHEDULED, REFER TO SHEET A-101.
16. MINI-SPLIT SYSTEM AIR HANDLER, REFER TO MECHANICAL DRAWINGS.
17. STOVE AND MICROWAVE COMBO BY OWNER.
18. REFRIGERATOR, BY OWNER.
19. NATURAL STONE COLUMN BASES WITH 4" INDIANA LIMESTONE CAP. REFER TO DETAIL 10/A-600.
20. 6X6 ROUGH SAWN DOUGLAS FIR COLUMNS, STAIN WITH TWP 100 SERIES STAIN, DARK OAK 103.
21. 5/4 PT WOOD DECK AND RAILING.
22. FLOOR DRAIN, SLOPE CONCRETE TO DRAIN, REFER TO PLUMBING DRAWINGS. USE INTERIOR WALL PANELING FOR EXTRA TO REPAIR EXTERIOR WALLS AS NEEDED.
23. ROOF OVERHANG ABOVE.
24. SIP WALL WITH 1/2" REWALL INTERIOR AND HARDIE PLANK CEDARMILL LAP SIDING ON THE EXTERIOR OVER TYVEK BUILDING WRAP, TIMBER BARK. ALL WINDOWS, DOORS, CORNERS, BOTTOM EDGE OF STRUCTURE AND SOFFIT/CABLE AREA TO RECEIVE 1X4 CERTAINTED CEDAR TRIM, PAINT DARK BRONZE.
25. PLATE GLASS, FRAMELESS MIRROR, 1/4", ENTIRE WIDTH OF WALL (FIELD MEASURE), 36" HIGH. USE MIRROR HANGING CLIPS, MOUNT JUST ABOVE BACKSPLASH.
26. 12" X 12" BOXED OUT PLUMBING CHASE, USE 1/2" REWALL OVER 1 7/8" FURRING STUDS. EXTEND FROM CEILING THROUGH CABINETS FOR THE SINK AND DISHWASHER. REFER TO PLUMBING DRAWINGS FOR MORE INFORMATION.

GENERAL NOTES

- A. REFER TO FINISH SCHEDULE.
- B. REFER TO DOOR SCHEDULE.
- C. REFER TO REFLECTED CEILING PLAN FOR CEILING HEIGHTS.
- D. REFER TO INDEX SHEET FOR WALL TYPES.
- E. FIELD VERIFY ALL DIMENSIONS PRIOR TO CONSTRUCTION.
- F. FIELD VERIFY EQUIPMENT LOCATIONS FOR ELECTRICAL OUTLET LOCATIONS. REFER TO ELECTRICAL PLAN.
- G. REFER TO FINISH SCHEDULE SHEET FOR COLOR AND MATERIAL SELECTIONS.
- H. ALL FURNITURE SHOWN ON PLAN IS FOR REFERENCE ONLY, ALL FURNITURE BY OWNER.
- I. SIMILAR SECTIONS CUTS FOR CABIN "B" ARE MIRRORED SECTIONS OF CABIN "A".
- J. ALL CABINS ARE STRUCTURAL INSULATION PANELS AS BASIS OF DESIGN, HOWEVER, THE PROPOSAL FORM HAS A LINE ITEM FOR ALL CABINS TO BE PRICED AS 2X6 STICK FRAMING WITH 6" OPEN CELL SPRAY FOAM AND VAPOR BARRIER.

REFERENCE FLOOR PLANS

TWO BEDROOM CABINS FOR:
LAKE DARLING STATE PARK

LAKE DARLING STATE PARK
WASHINGTON COUNTY, IOWA

CONSULTANT:

IOWA DEPARTMENT OF
NATURAL RESOURCES

ENGINEERING SERVICES - WALLACE BUILDING
502 E. 9TH ST., DES MOINES, IA 50319-0034
P: 515.281.5918
F: 515.281.8685



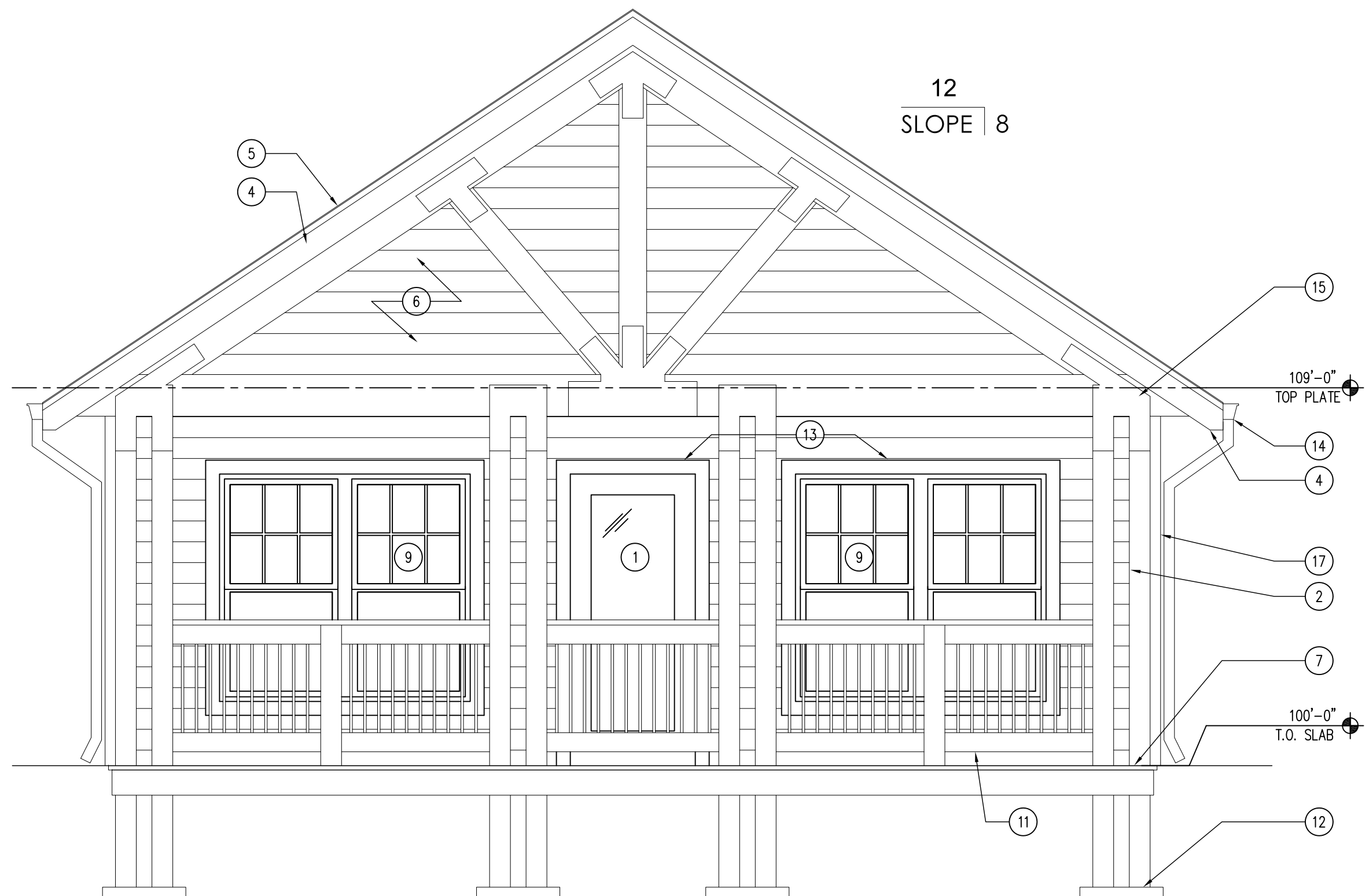
NO. BY DATE REVISION

DRAWN BY: PROJECT NUMBER:
15-06-92-04

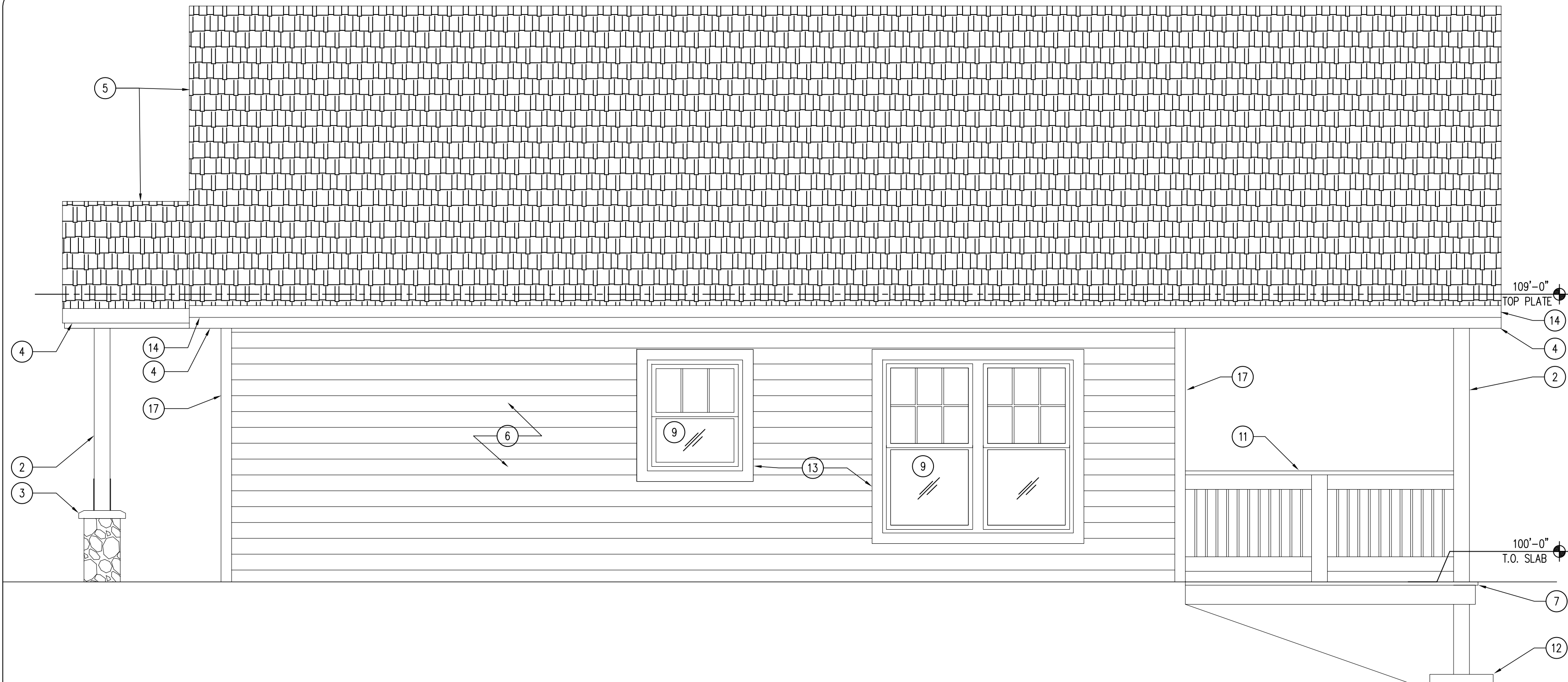
CHK'D BY: DATE:
11.26.2014

SHEET NO:

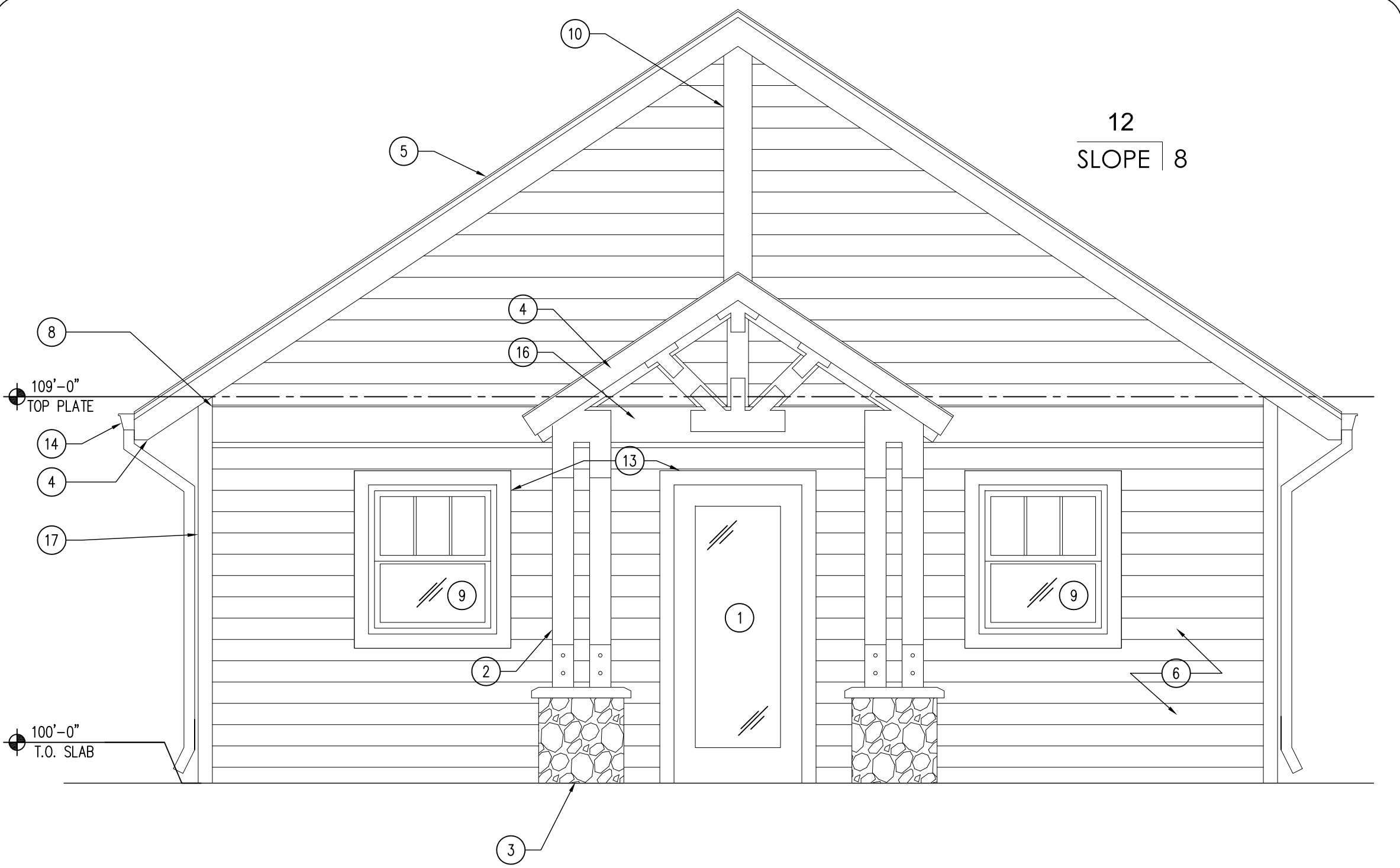
A-100



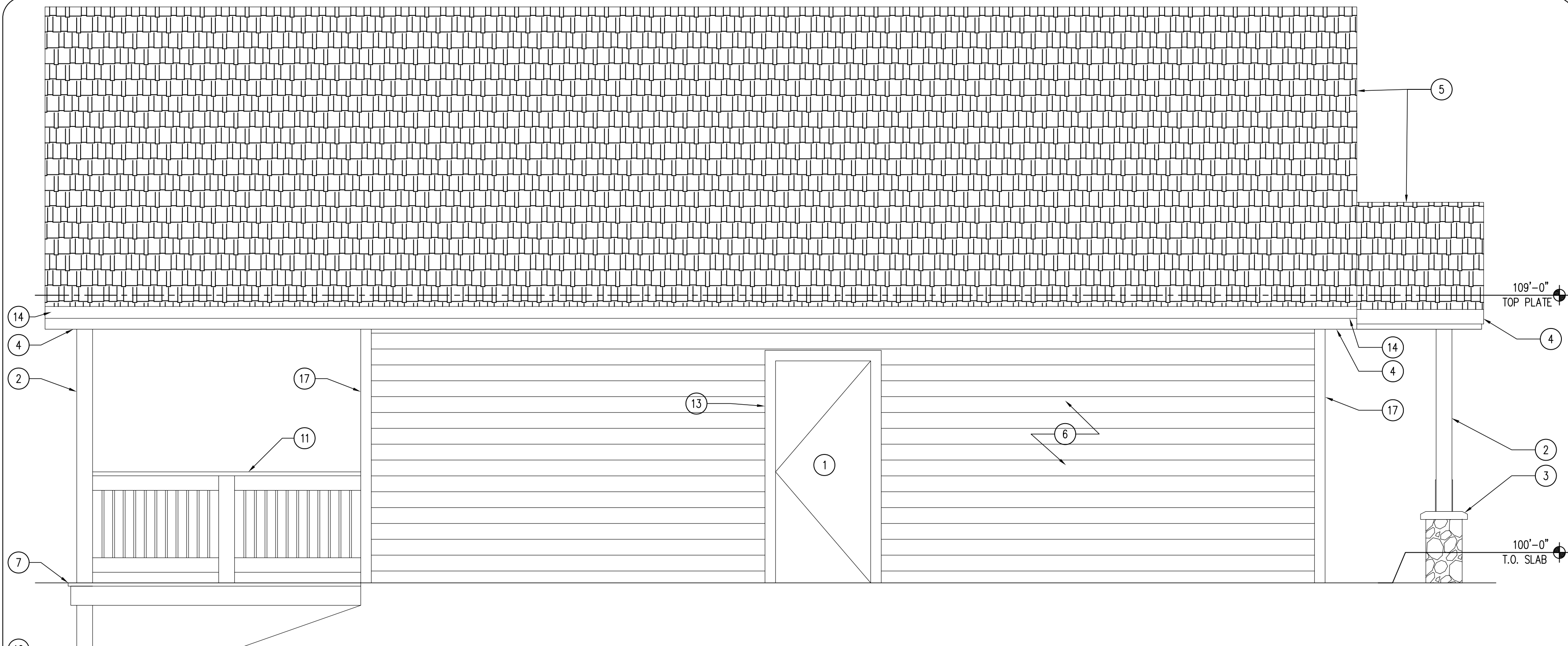
04 BUILDING ELEVATION – CABIN "A" & "B"
SCALE: 3/8" = 1'-0"



03 BUILDING ELEVATION – CABIN "A"
SCALE: 3/8" = 1'-0"



02 BUILDING ELEVATION – BOTH CABINS
SCALE: 3/8" = 1'-0"



01 BUILDING ELEVATION – CABIN "A"
SCALE: 3/8" = 1'-0"

KEYNOTES

1. DOOR AS SCHEDULED, REFER TO DOOR SCHEDULE.
2. 6X6 DOUGLAS FIR ROUGH SAWN COLUMN, STAIN WITH TWP 100 SERIES STAIN, DARK OAK 103.
3. NATURAL STONE COLUMN BASE, WITH 4" INDIANA LIMESTONE CAP, REFER TO DETAIL 10/A-600.
4. 1X10 CEDAR FASCIA TRIM, STAIN WITH TWP 100 SERIES, DARK OAK 103.
5. LANDMARK TL SHINGLES OVER SOLB ROOFING FELT WITH 24" WATER AND ICE SHIELD ON RIDGE AND EAVES, COLOR TO BE WEATHERED WOOD.
6. JAMES HARDIE 8.25" CEDARMILL LAP SIDING. COLOR TIMBER BARK.
7. PT WOOD DECK, STAIN WITH TWP 100 SERIES, DARK OAK 103.
8. LARGE 1X10 HARDIE TRIM HORIZONTAL RUSTIC TRIM BOARD, COLOR TO MATCH SIDING.
9. ANDERSEN 100 SERIES WINDOWS, REFER TO WINDOW SCHEDULE SHEET A-600.
10. NOT USED.
11. PT WOOD DECK RAILING, REFER TO DETAIL 03/A-300.
12. 24" DIAMETER SONO-TUBE CONCRETE COLUMN FOOTING, REFER TO SECTIONS FOR MORE INFORMATION.
13. JAMES HARDIE 5/4X4 RUSTIC TRIM BOARD, PAINT TO MATCH WINDOWS.
14. 6" ALUMINUM GUTTERS AND DOWNSPOUTS, DARK BRONZE.
15. 6X12 DOUGLAS FIR ROUGH SAWN HEAVY TIMBER TRUSS WITH 3/8" STEEL TRUSS CONNECTION PLATES, POWDER-COAT BLACK. STAIN WITH TWP 100 SERIES STAIN, DARK OAK 103.
16. 6X10 DOUGLAS FIR ROUGH SAWN HEAVY TIMBER TRUSS WITH 3/8" STEEL TRUSS CONNECTION PLATES, POWDER-COAT BLACK. STAIN WITH TWP 100 SERIES STAIN, DARK OAK 103.
17. JAMES HARDIE 5/4X4 RUSTIC TRIM, COLOR TO MATCH SIDING.

GENERAL NOTES

- A. FIELD VERIFY ALL DIMENSIONS PRIOR TO CONSTRUCTION.
- B. FIELD VERIFY EQUIPMENT LOCATIONS FOR ELECTRICAL OUTLET LOCATIONS. REFER TO ELECTRICAL PLAN.
- C. REFER TO FINISH SCHEDULE SHEET A-600 FOR COLOR AND MATERIAL SELECTIONS.
- D. ALL CABINS ARE STRUCTURAL INSULATION PANELS AS BASIS OF DESIGN, HOWEVER, THE PROPOSAL FORM HAS A LINE ITEM FOR ALL CABINS TO BE PRICED AS 2X6 STICK FRAMING WITH 4" OPEN CELL SPRAY FOAM AND VAPOR BARRIER.

CONSULTANT:

IOWA DEPARTMENT OF
NATURAL RESOURCES

ENGINEERING SERVICES - WALLACE BUILDING
502 E. 9TH ST., DES MOINES, IA 50319-0034
P: 515.281.5918
F: 515.281.8685



BUILDING ELEVATIONS

TWO BEDROOM CABINS FOR:

LAKE DARLING STATE PARK

WASHINGTON COUNTY, IOWA

LAKE DARLING STATE PARK

NO. BY DATE REVISION

DRAWN BY: PROJECT NUMBER:

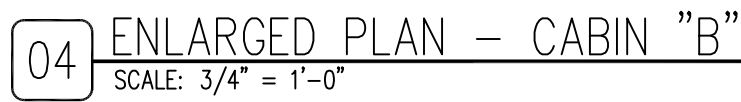
15-06-92-04

CHK'D BY: DATE:

11.26.2014

SHEET NO:

A-200



T-7 Concealed Mounting with Snap Flange Grab Bars
B-6806 x 24

2. DOOR AS SCHEDULED, REFER TO DOOR SCHEDULE.
3. 6X6 DOUGLAS FIR ROUGH SAWN COLUMN, STAIN WITH TWP 100 SERIES STAIN, DARK OAK 103.
4. NATURAL STONE COLUMN BASE, REFER TO DETAIL 10/A-600.
5. 1X10 CEDAR FASCIA TRIM, STAIN WITH TWP 100 SERIES, STAIN DARK OAK 103.
6. LANDMARK TL SHINGLES OVER 30LB ROOFING FELT WITH 24" WATER AND ICE SHIELD ON RIDGE AND EAVES, COLOR TO BE WEATHERED WOOD.
7. JAMES HARDIE 8.25" CEDARMILL LAP SIDING. COLOR TIMBER BARK.
8. PT WOOD DECK, STAIN WITH TWP 100 SERIES, DARK OAK 103.
9. LARGE 1X10 HARDIE TRIM HORIZONTAL RUSTIC TRIM BOARD, COLOR TO MATCH SIDING.
10. 1X6 1X10 SERIES WINDOWS, REFER TO FINISH SCHEDULE SHEET A-600.
11. JAMES HARDIE 5/4X4 RUSTIC TRIM, COLOR TO MATCH SIDING.
12. PT WOOD DECK RAILING, REFER TO DETAIL 03/A-300.
13. 24" DIAMETER SONO-TUBE CONCRETE COLUMN FOOTING, REFER TO SECTIONS FOR MORE INFORMATION.
14. JAMES HARDIE 5/4X4 RUSTIC TRIM BOARD, PAINT TO MATCH WINDOWS.
15. 6" ALUMINUM GUTTERS AND DOWNSPOUTS, DARK BRONZE.
16. STAINED, SEALED AND WAXED CONCRETE SLAB, REFER TO FINISH SCHEDULE A-600.
17. 3/4" MAPLE FLYHOLE CABINET (WD-1) WITH CNDL (WD-2) ON CONCEALED HINGES. PROVIDE DECORATIVE HARDWARE WIRE PULLS AND CYLINDRICAL KEY-LOCK. REFER TO MILLWORK SECTION.

- A. FIELD VERIFY ALL DIMENSIONS PRIOR TO CONSTRUCTION.
- B. FIELD VERIFY EQUIPMENT LOCATIONS FOR ELECTRICAL OUTLET LOCATIONS. REFER TO ELECTRICAL PLAN.
- C. REFER TO FINISH SCHEDULE SECTIONS A-600 FOR COLOR AND MATERIAL SELECTIONS.
- D. ALL CABINS ARE STRUCTURAL INSULATION PANELS AS BASIS OF DESIGN, HOWEVER, THE PROPOSAL FORM HAS A LINE ITEM FOR ALL CABINS TO BE PRICED AS 2X6 STICK FRAMING WITH 4" OPEN CELL SPRAY FOAM AND VAPOR BARRIER.

LAKE DARLING STATE PARK

SHEET No: