



ADDENDUM NO.2

RFB - 927940-03

WRC Fire Alarm Phase 4

Woodward, Iowa

Date: February 13th, 2026

Project: 9279.40 BI#03 Fire Alarm Phase 4

TO: PROSPECTIVE BIDDERS:

THIS ADDENDUM FORMS A PART OF THE BIDDING AND CONTRACT DOCUMENTS AND MODIFIES THE BIDDING DOCUMENTS DATED 12-12-2025, WITH AMENDMENTS AND ADDITIONS NOTED BELOW. THIS ADDENDUM SUPERSEDES AND SUPPLEMENTS ALL PORTIONS OF THE ORIGINAL BIDDING AND CONTRACT DOCUMENTS WITH WHICH IT CONFLICTS. ACKNOWLEDGE RECEIPT OF THIS ADDENDUM IN THE IMPACS ELECTRONIC PROCUREMENT SYSTEM. FAILURE TO DO SO MAY DISQUALIFY THE BIDDER.

Questions:

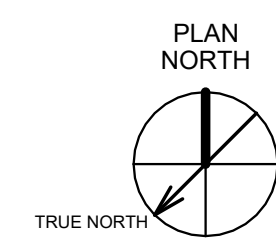
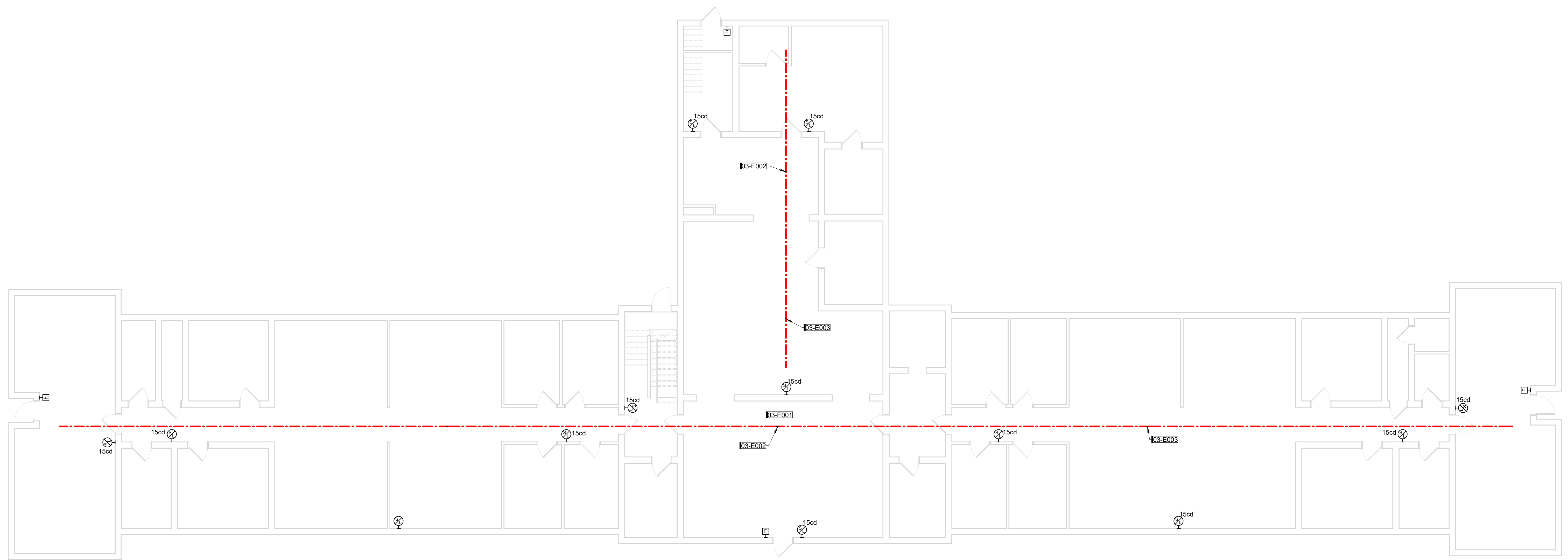
1. After removal of ceiling tiles and installation of the linear heat detection wire in Maple Lodge, is reinstallation of the ACT ceiling tiles required?
 - a. Any ceiling tiles removed prior to the start of the project will not be reinstalled.

ATTACHMENTS:

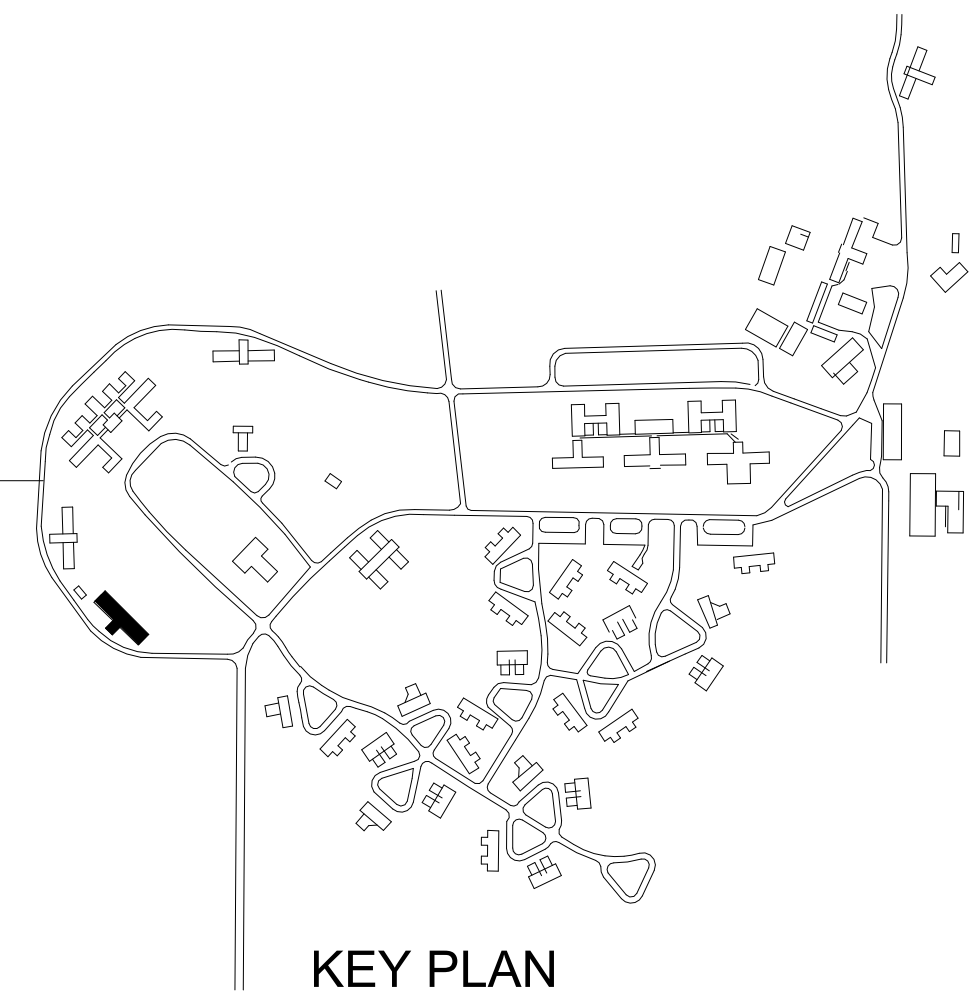
1. Drawings: 03-E301, 03-E302, 06-E301, 06-E302, 08-E300, 08-E301, 08-E302, 14-ED301, 14-E301, 19-ED300, 19-ED301, 19-ED302, 19-E300, 19-E301, 19-E302, 21-E301

END OF ADDENDUM

KEYNOTES	
KEY	NOTE
03-E001	FIRE ALARM IN LARCHES BUILDING CONNECTED TO FIRE ALARM CONTROL PANEL ON BASEMENT FLOOR OF WESTWOOD. ROUTE FIRE ALARM CABLING BETWEEN BUILDING VIA EXISTING CONDUIT. REFER TO 00-G002 FOR CONDUIT ROUTING. FIRE ALARM ANNUNCIATION ONLY TO ACTIVATE IN THE BUILDING WERE DETECTION DEVICE IS ACTIVATED.
03-E002	LINEAR HEAT DETECTOR WIRE.
03-E003	LINEAR HEAT DETECTOR WIRE SHOWN IN RED TO BE INSTALLED TO ACOUSTIC CEILING.



1 FIRST FLOOR FIRE ALARM RENOVATION PLAN
1/8" = 1'-0" 0' 1/2"



KEY PLAN

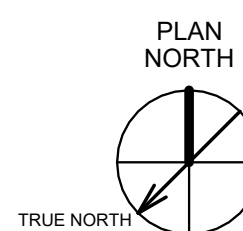
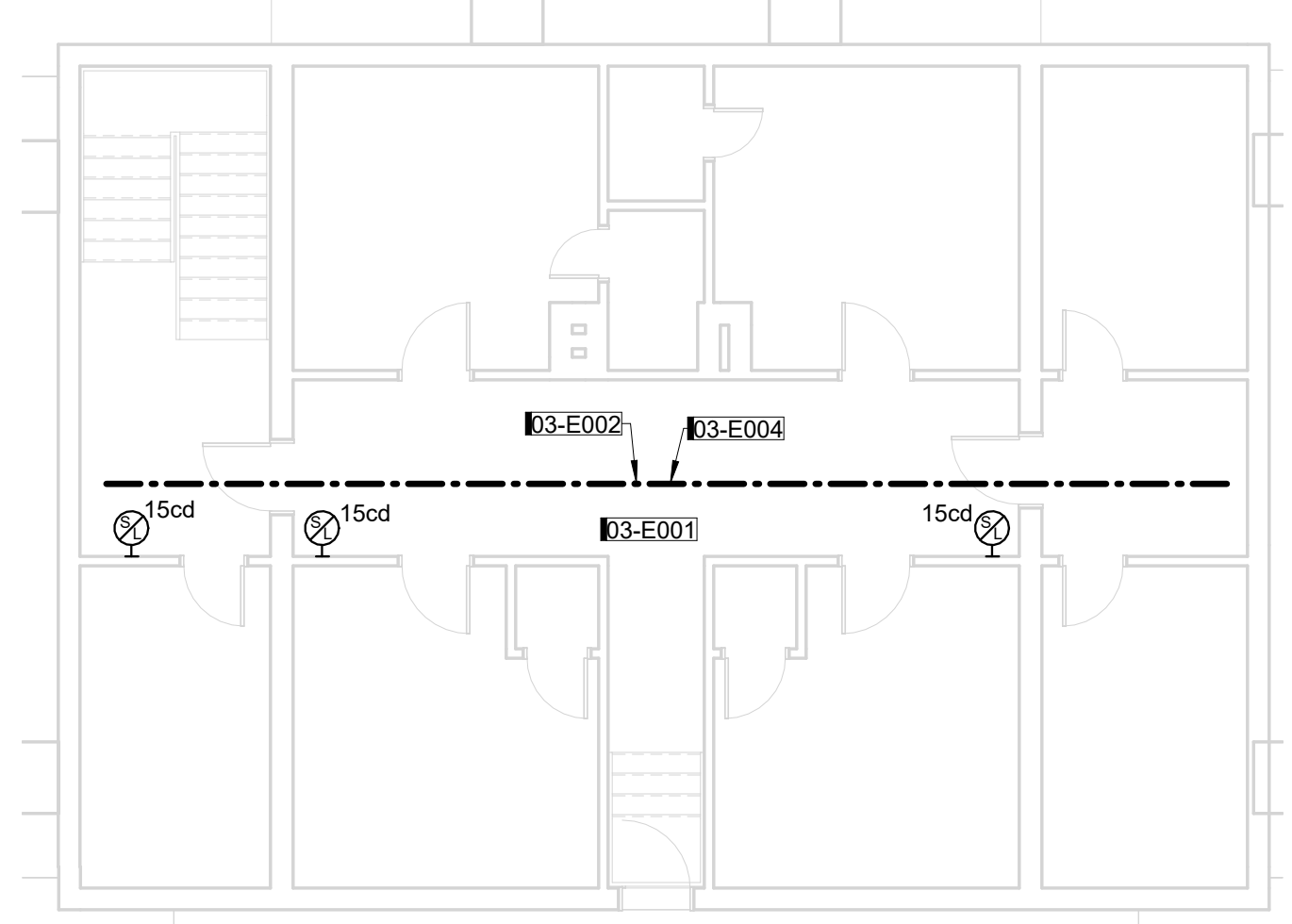
1 FIRST FLOOR SYSTEMS PLAN
03 - LARCHES

RNL	ADD 2	2025-02-13	PH 04-ADDENDUM #2
KUB			
CONSTRUCTION			
ISSUED FOR		2025-12-12	
PROJECT NUMBER	2240007040		
FIELD BOOK			

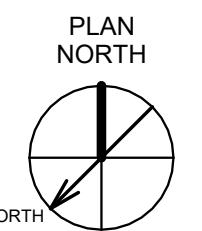
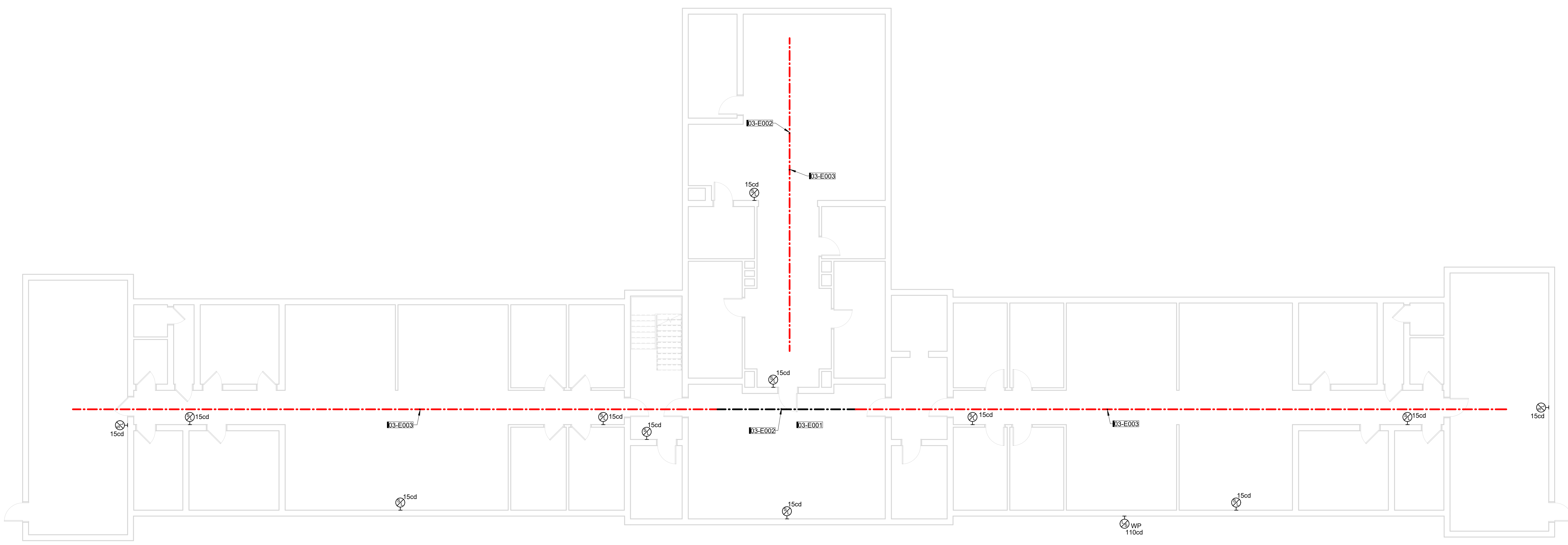
03-E301

Iowa Department of Administrative Services
1231 334th St, Woodward, IA 50276

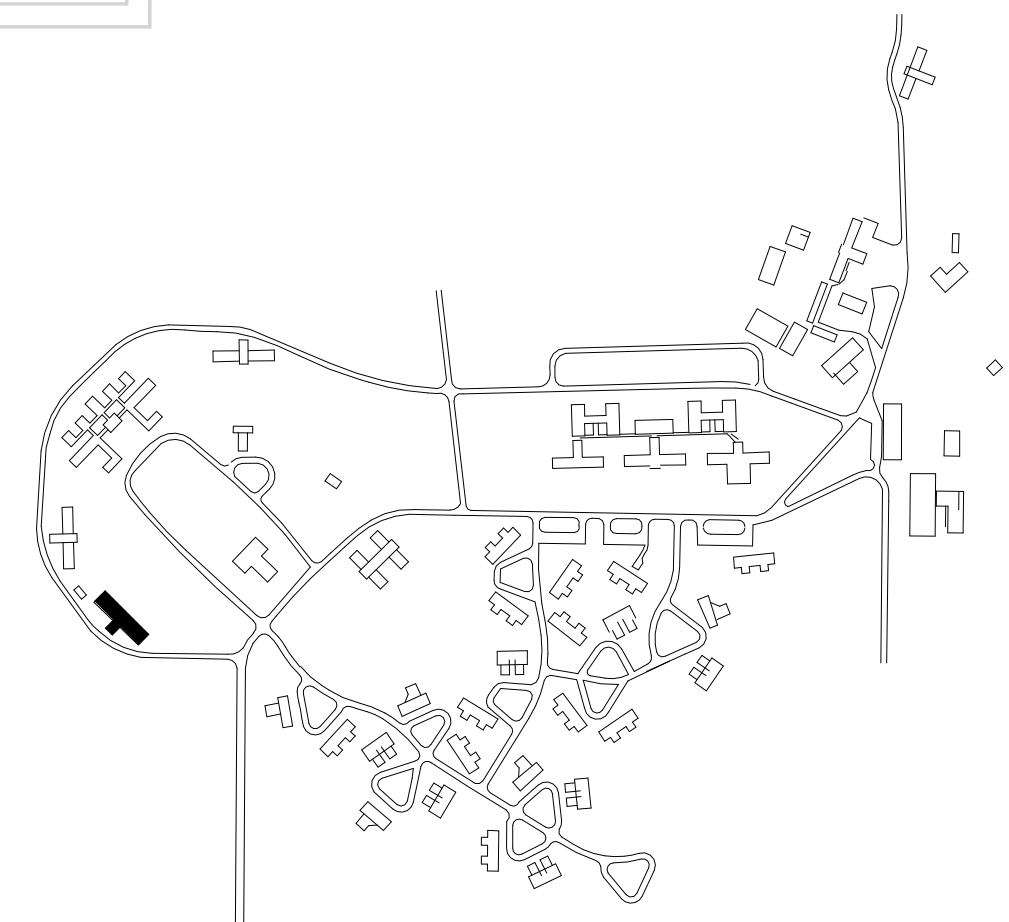
KEYNOTES	
KEY	NOTE
03-E001	FIRE ALARM IN LARCHES BUILDING CONNECTED TO FIRE ALARM CONTROL PANEL ON BASEMENT FLOOR OF WESTWOOD. ROUTE FIRE ALARM CABLING BETWEEN BUILDING VIA EXISTING CONDUIT. REFER TO 00-G002 FOR CONDUIT ROUTING. FIRE ALARM ANNUNCIATION ONLY TO ACTIVATE IN THE BUILDING WERE DETECTION DEVICE IS ACTIVATED.
03-E002	LINEAR HEAT DETECTOR WIRE.
03-E003	LINEAR HEAT DETECTOR WIRE SHOWN IN RED TO BE INSTALLED TO ACOUSTIC CEILING.
03-E004	LINEAR HEAT DETECTOR WIRE SHOWN IN BLACK TO BE INSTALLED TO EXISTING STRUCTURE. LOCATIONS DO NOT CONTAIN ACOUSTICAL CEILING.



2 THIRD FLOOR FIRE ALARM RENOVATION PLAN
1/8" = 1'-0" 0' 12"



1 SECOND FLOOR FIRE ALARM RENOVATION PLAN
1/8" = 1'-0" 0' 12"



KEY PLAN

SECOND AND THIRD FLOOR SYSTEMS PLAN
03-E302

DRAWN BY	RML	ADD 2	2025-02-13	PH 04-ADDENDUM #2
APPROVED BY	KUB			
ISSUED FOR	CONSTRUCTION			
ISSUE DATE		2025-12-12		
PROJECT NUMBER		2240007040		
FIELD BOOK				

Iowa Department of Administrative Services
1231 334th St, Woodward, IA 50276

A B C D E F G H

1

2

3

4

5

6

KEYNOTES	
KEY	NOTE
06-E001	FIRE ALARM IN HEMLOCK BUILDING CONNECTED TO FIRE ALARM CONTROL PANEL IN CHAPEL. ROUTE FIRE ALARM CABLING BETWEEN BUILDING VIA EXISTING CONDUIT. REFER TO 06-G002 FOR CONDUIT ROUTING. FIRE ALARM ANNUNCIATION ONLY TO ACTIVATE IN THE BUILDING WERE DETECTION DEVICE IS ACTIVATED.
06-E002	LINEAR HEAT DETECTOR WIRE
06-E003	LINEAR HEAT DETECTOR WIRE SHOWN IN RED TO BE INSTALLED TO ACOUSTIC CEILING.

SHIVEHATTERY
ARCHITECTURE+ENGINEERING

4125 WESTOWN PKWY, SUITE 100
WEST DES MOINES, IA 50266
319.223.8104 | SHIVEHATTERY.COM

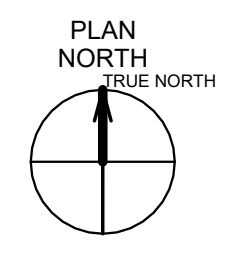
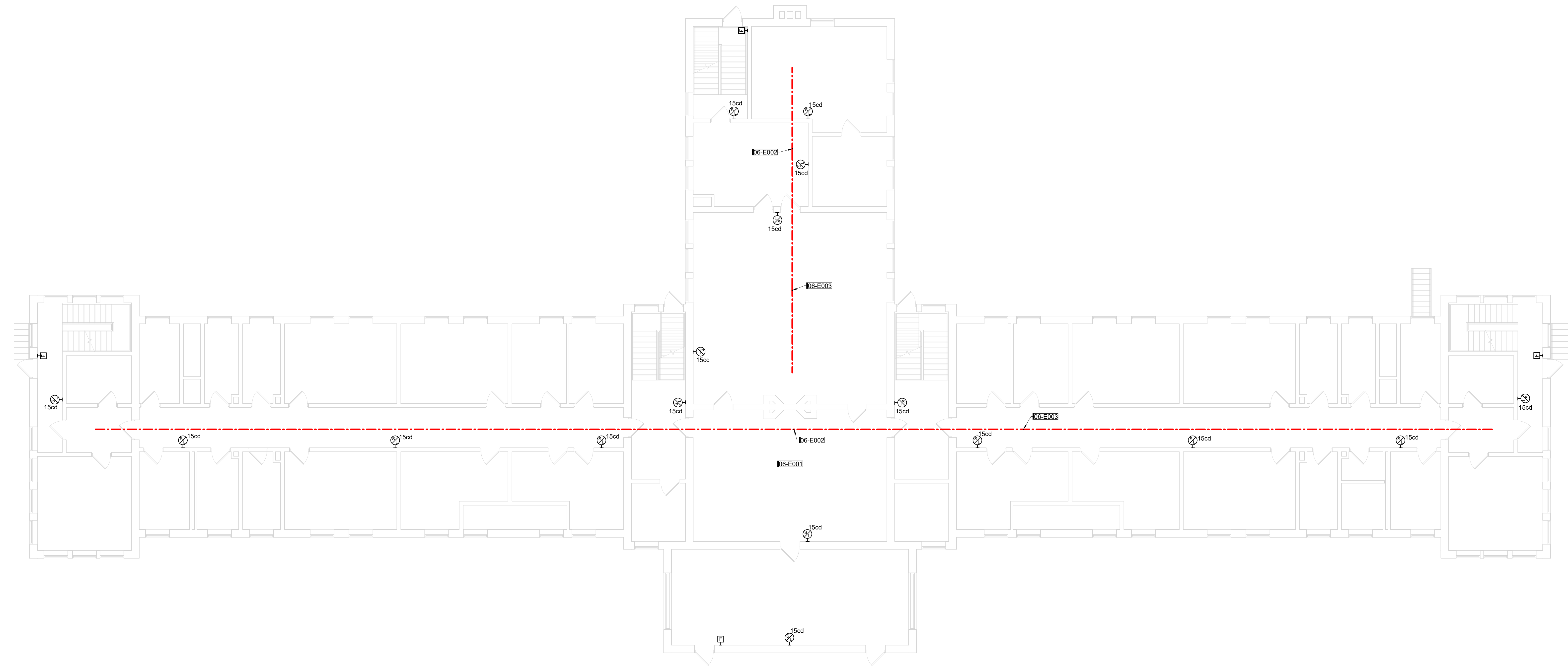
Iowa Department of Administrative Services
1231 334th Street, Woodward, IA 50276

(#9279.40) WRC Fire Alarm Phase 4
06 - HEMLOCK

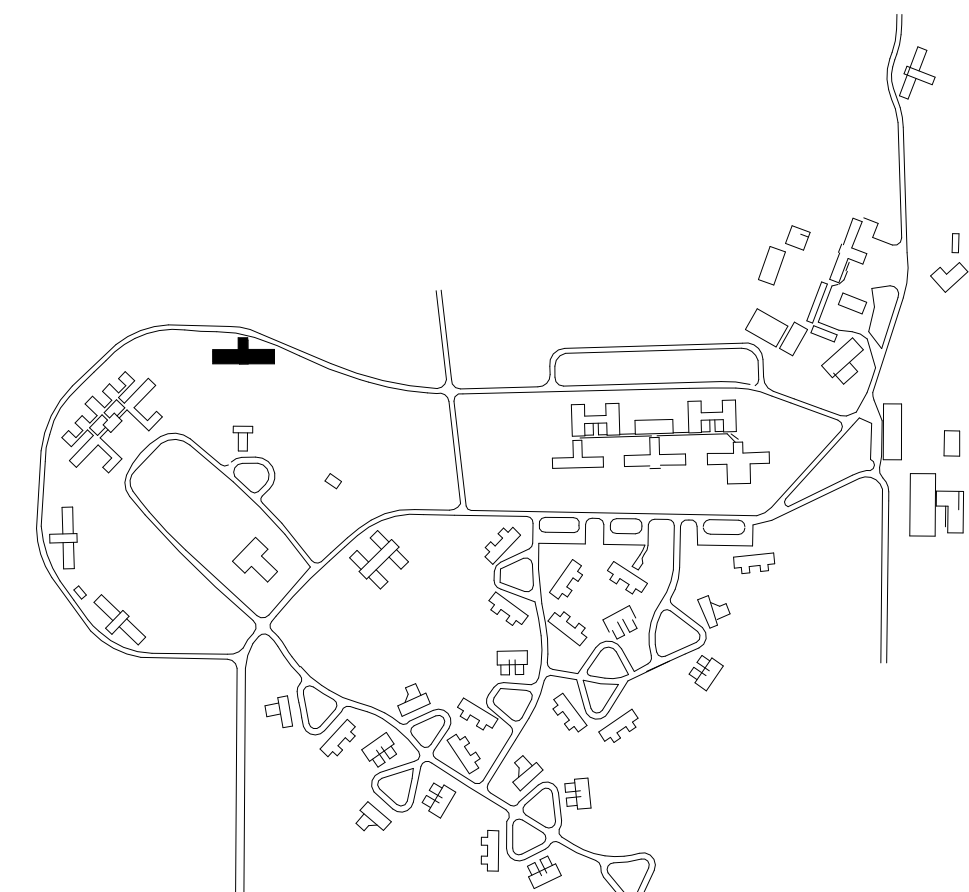
ACD 2	2026-02-13	PH 04-ADDENDUM #2
RWL	KJB	
DRAWN BY	APPROVED BY	CONSTRUCTION
ISSUED FOR	ISSUE DATE	2025-12-12
PROJECT NUMBER	FIELD BOOK	2240007040

FIRST FLOOR SYSTEMS PLAN

06-E301

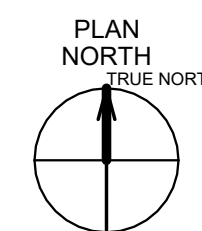
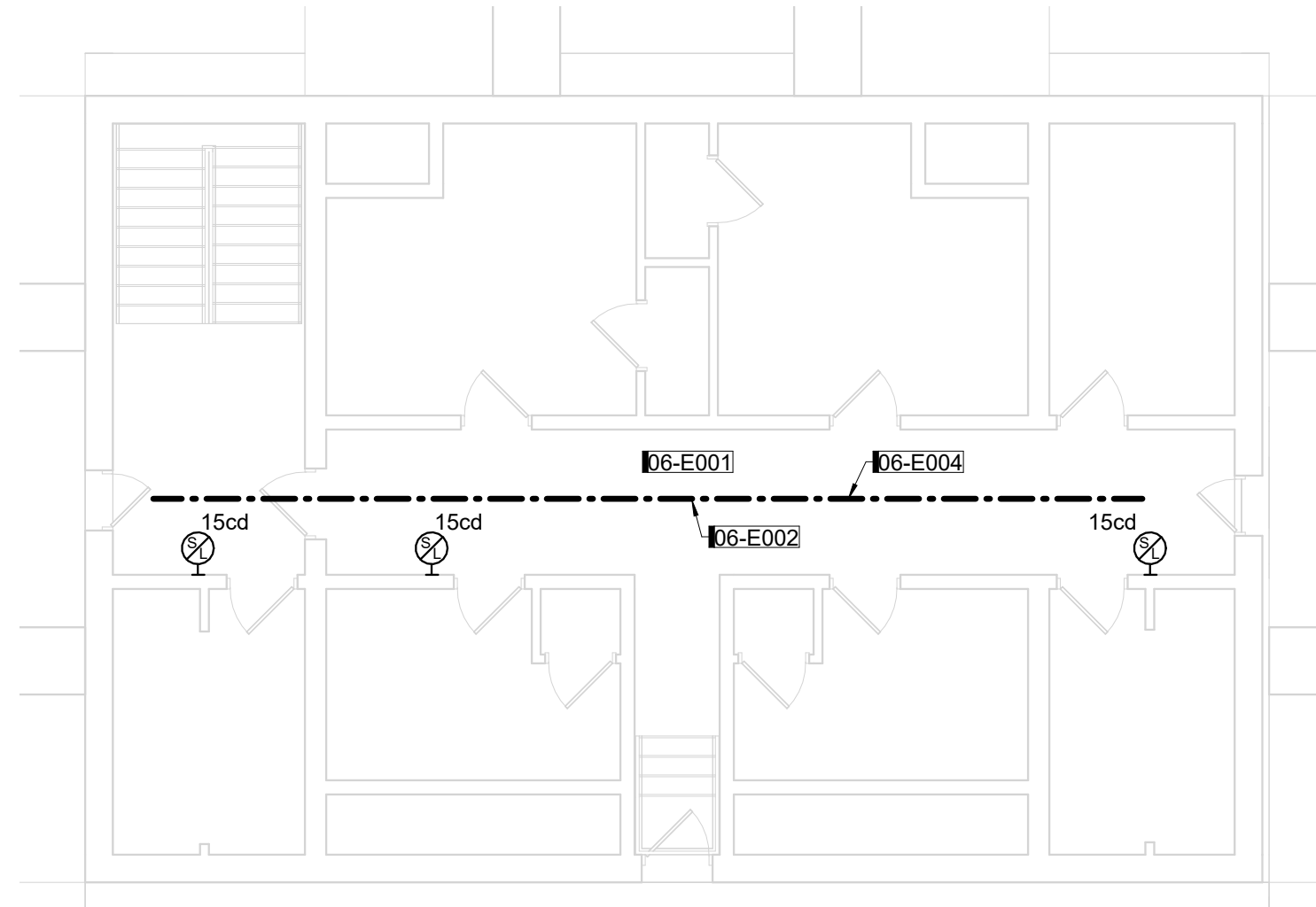


A5 FIRST FLOOR - FIRE ALARM RENOVATION PLAN
1/8" = 1'-0"

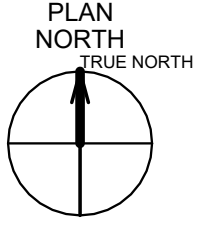
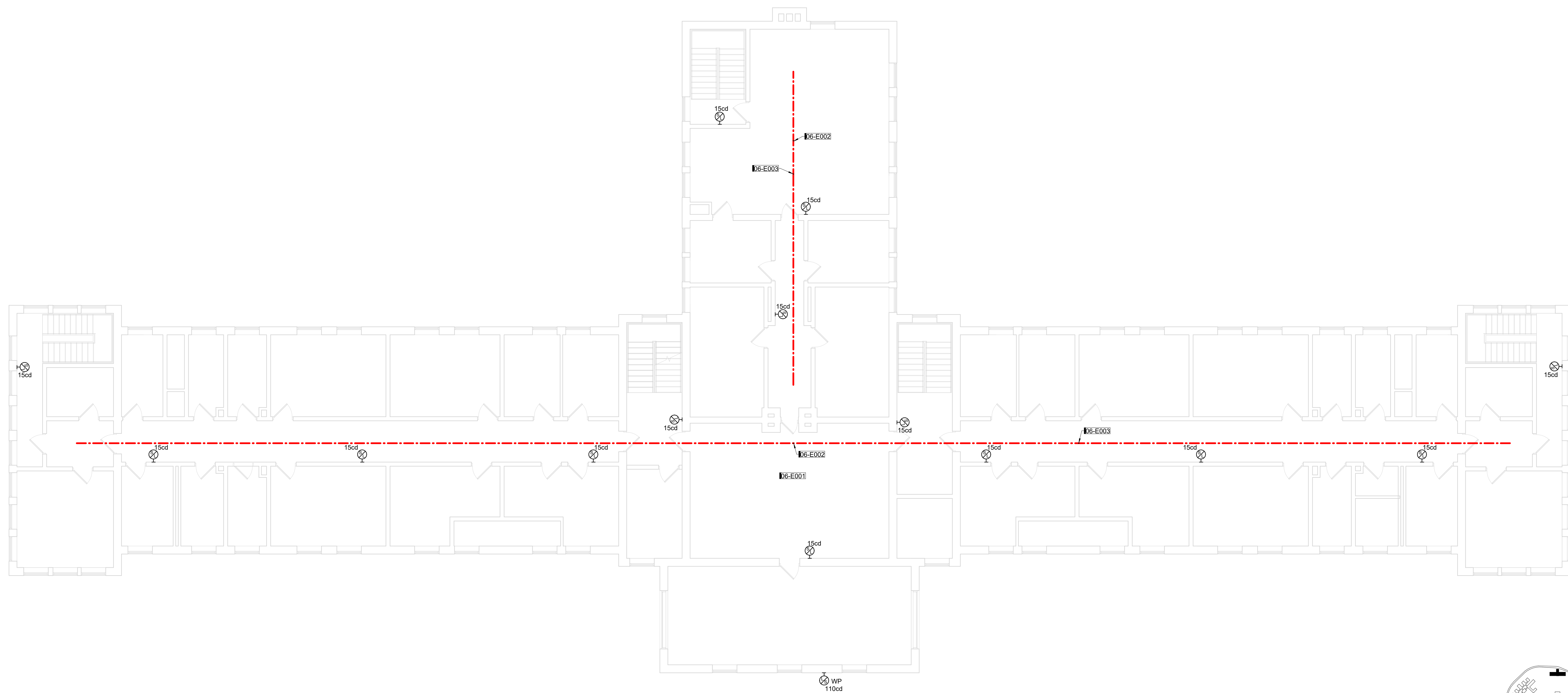


KEY PLAN

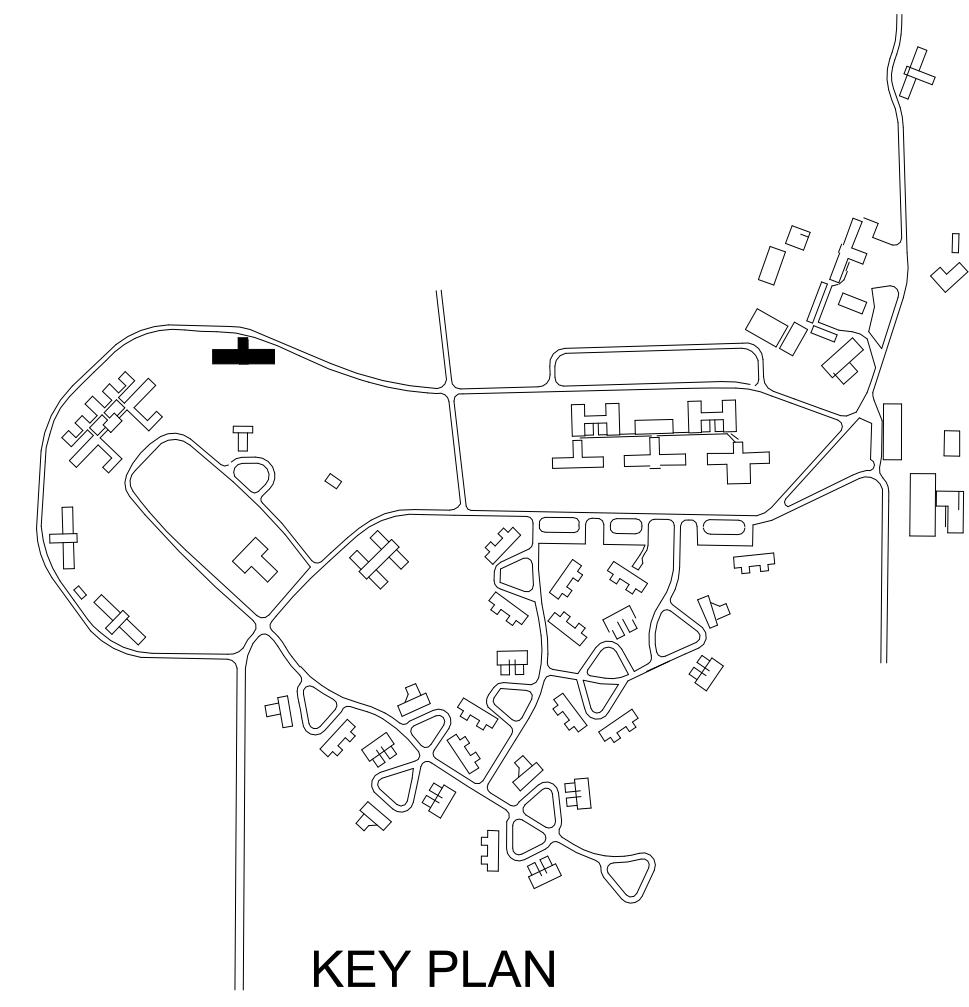
KEYNOTES	
KEY	NOTE
06-E001	FIRE ALARM IN HEMLOCK BUILDING CONNECTED TO FIRE ALARM CONTROL PANEL IN CHAPEL. ROUTE FIRE ALARM CABLING BETWEEN BUILDING VIA EXISTING CONDUIT. REFER TO 00-5002 FOR CONDUIT ROUTING. FIRE ALARM ANNUNCIATION ONLY TO ACTIVATE IN THE BUILDING WERE DETECTION DEVICE IS ACTIVATED.
06-E002	LINEAR HEAT DETECTOR WIRE
06-E003	LINEAR HEAT DETECTOR WIRE SHOWN IN RED TO BE INSTALLED TO ACOUSTIC CEILING.
06-E004	LINEAR HEAT DETECTOR WIRE SHOWN IN BLACK TO BE INSTALLED TO EXISTING STRUCTURE. LOCATIONS DO NOT CONTAIN ACOUSTICAL CEILING.



C3 THIRD FLOOR - FIRE ALARM RENOVATION PLAN
1/8" = 1'-0" 0 12



A6 SECOND FLOOR - FIRE ALARM RENOVATION PLAN
1/8" = 1'-0" 0 12



KEY PLAN

SECOND AND THIRD FLOOR SYSTEMS PLAN
DRAWN BY: RML
APPROVED BY: KJB
ISSUED FOR: CONSTRUCTION
ISSUE DATE: 2025-12-12
PROJECT NUMBER: 2240007040
FIELD BOOK

REV	ACD 2	2025-02-13	PH 04-ADDENDUM #2
DATE	2025-12-12	2240007040	

LOWA Department of Administrative Services
1231 334th Street, Woodward, IA 50276

06-E302

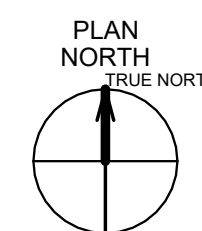
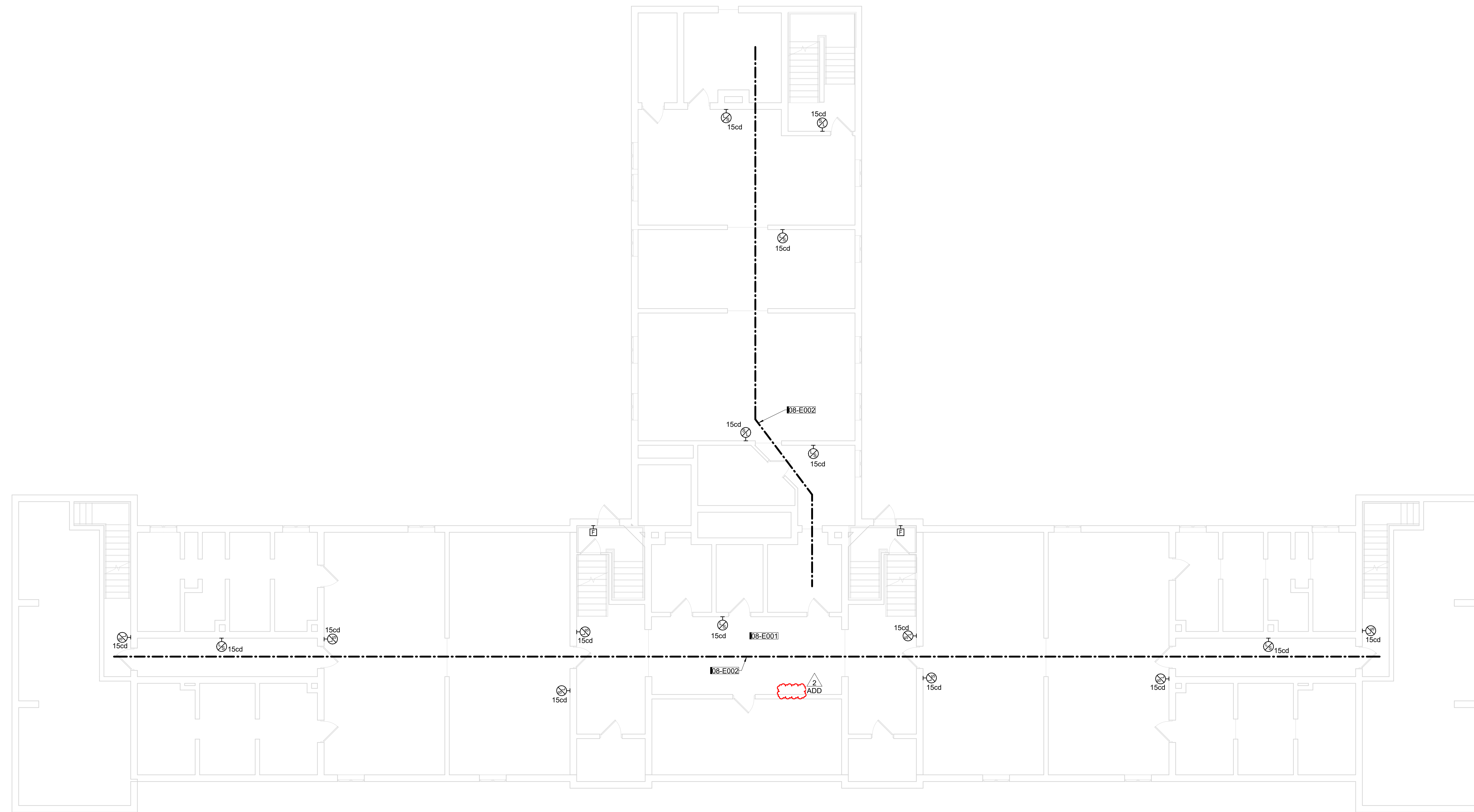
A B C D E F G H

1
2
3
4
5
6

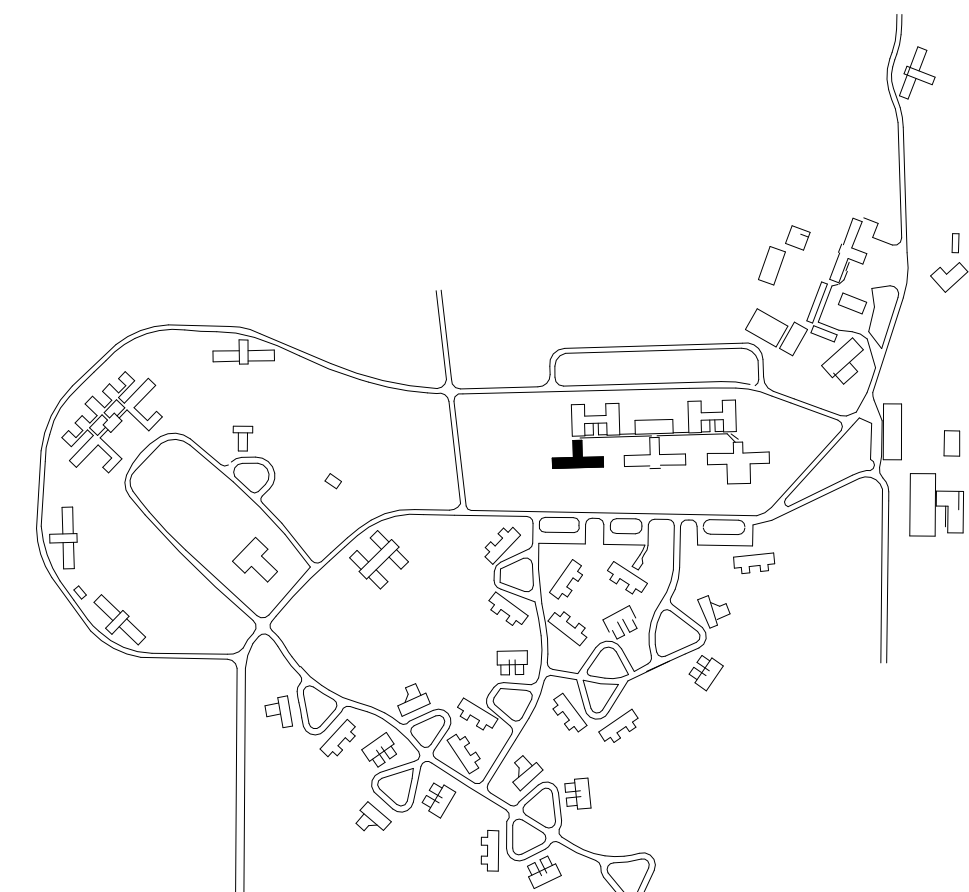
KEYNOTES	
KEY	NOTE
08-E001	FIRE ALARM IN MAPLE LODGE CONNECTED TO FIRE ALARM CONTROL PANEL IN CAMPUS FOOD SERVICE BUILDING. ROUTE FIRE ALARM CABLING BETWEEN BUILDING VIA EXISTING TUNNELS THAT CONNECT THE BUILDINGS. REFER TO 00-G002 FOR CONDUIT ROUTING. FIRE ALARM ANNUNCIATION ONLY TO ACTIVATE IN THE BUILDING WHERE DETECTION DEVICE IS ACTIVATED.
08-E002	LINEAR HEAT DETECTOR WIRE.

SHIVEHATTERY
ARCHITECTURE+ENGINEERING

4125 WESTOWN PKWY, SUITE 100
WEST DES MOINES, IA 50266
319.223.8104 | SHIVEHATTERY.COM



A6 BASEMENT LEVEL - FIRE ALARM RENOVATION PLAN
1/8" = 1'-0" 0' 12"



KEY PLAN

(#9279.40) WRC Fire Alarm Phase 4
08 - MAPLE LODGE

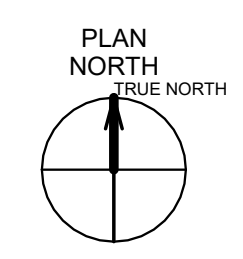
DRAWN BY	RML	ACD 2	2026-02-13	PH 04-ADDENDUM #2
APPROVED BY	KJB			
ISSUED FOR	CONSTRUCTION		2025-12-12	
PROJECT NUMBER	2240007040			
FIELD BOOK				

BASEMENT LEVEL SYSTEMS PLAN

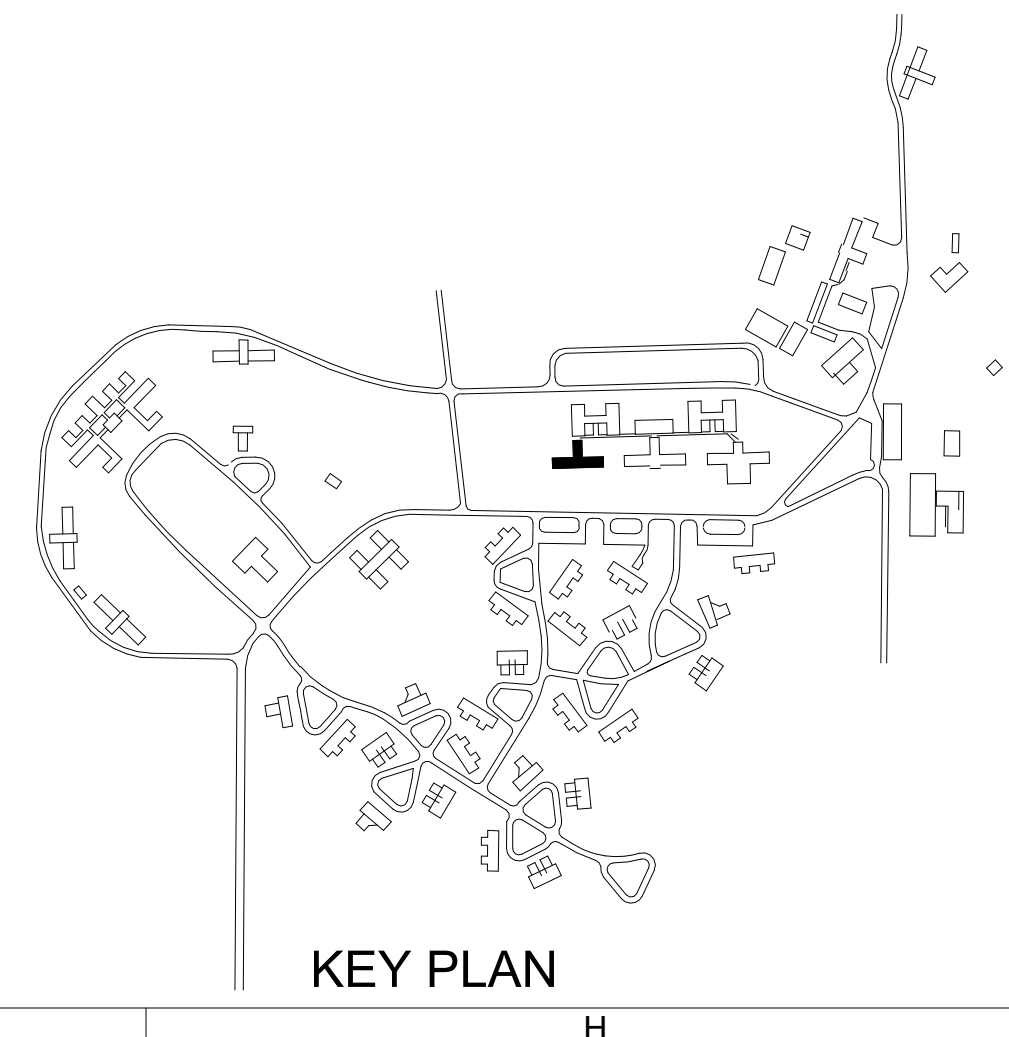
08-E300

Iowa Department of Administrative Services
1231 334th Street, Woodward, IA 50276

KEYNOTES	
KEY	NOTE
08-E001	FIRE ALARM IN MAPLE LODGE CONNECTED TO FIRE ALARM CONTROL PANEL IN CAMPUS FOOD SERVICE BUILDING. ROUTE FIRE ALARM CABLING BETWEEN BUILDING VIA EXISTING TUNNELS THAT CONNECT THE BUILDINGS. REFER TO 00-G002 FOR CONDUIT ROUTING. FIRE ALARM ANNUNCIATION ONLY TO ACTIVATE IN THE BUILDING WHERE DETECTION DEVICE IS ACTIVATED.
08-E002	LINEAR HEAT DETECTOR WIRE
08-E003	LINEAR HEAT DETECTOR WIRE SHOWN IN RED TO BE INSTALLED TO ACOUSTIC CEILING. EXISTING CEILING ACOUSTIC CEILING PADS TO BE REMOVED PRIOR TO FIRE ALARM WORK BEGINNING.
08-E004	LINEAR HEAT DETECTOR WIRE SHOWN IN BLACK TO BE INSTALLED TO EXISTING STRUCTURE. LOCATIONS DO NOT CONTAIN ACOUSTICAL CEILING.



A6 FIRST FLOOR - FIRE ALARM RENOVATION PLAN
1/8" = 1'-0" 0" 12"



(#9279.40) WRC Fire Alarm Phase 4
08 - MAPLE LODGE

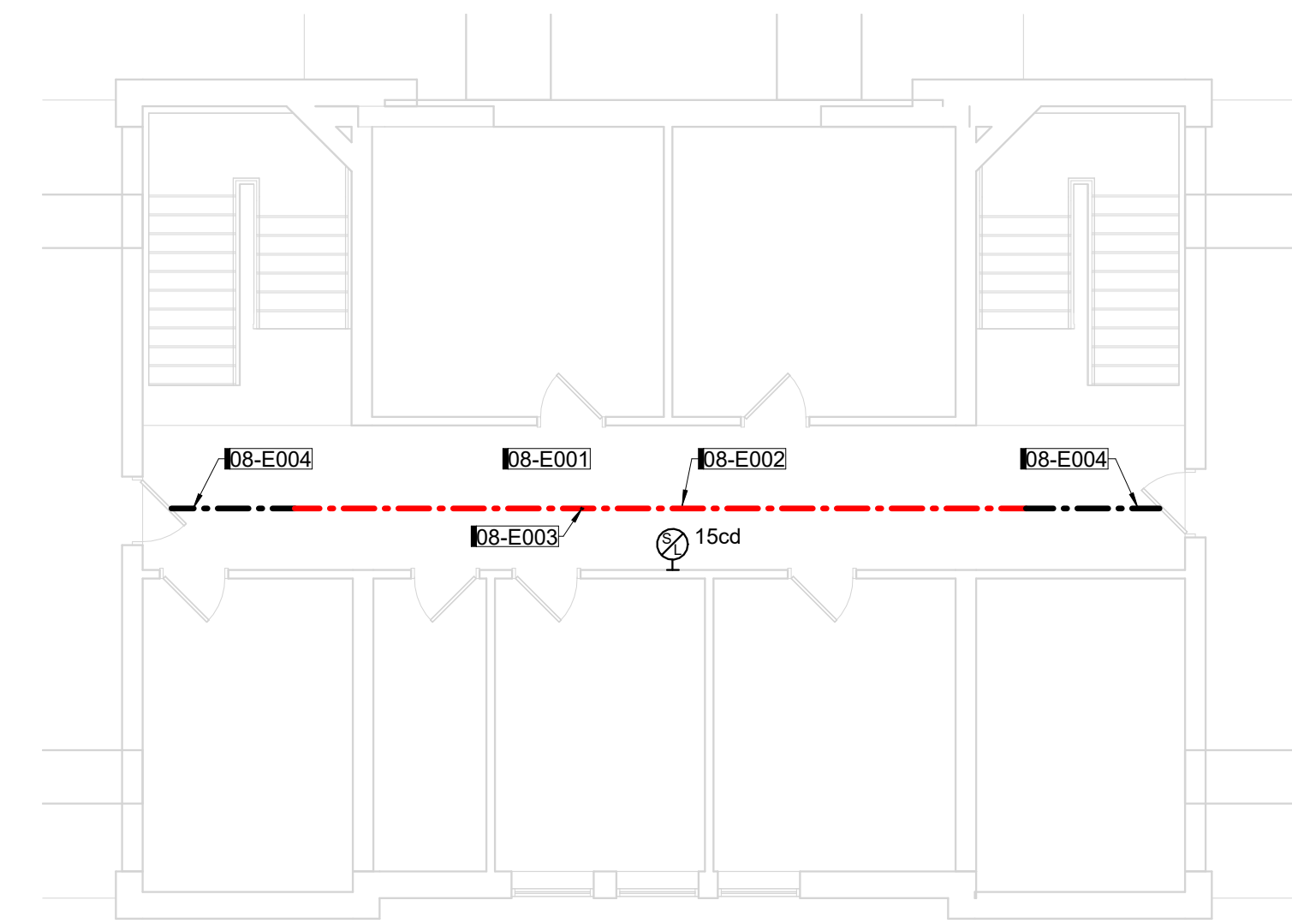
RWL	ACD 2	2026-02-13	PH 04-ADDENDUM #2
DRAWN BY	KUB		
APPROVED BY	CONSTRUCTION		
ISSUED FOR	2025-12-12		
ISSUE DATE	2240007040		
PROJECT NUMBER			
FIELD BOOK			

FIRST FLOOR
SYSTEMS PLAN

08-E301

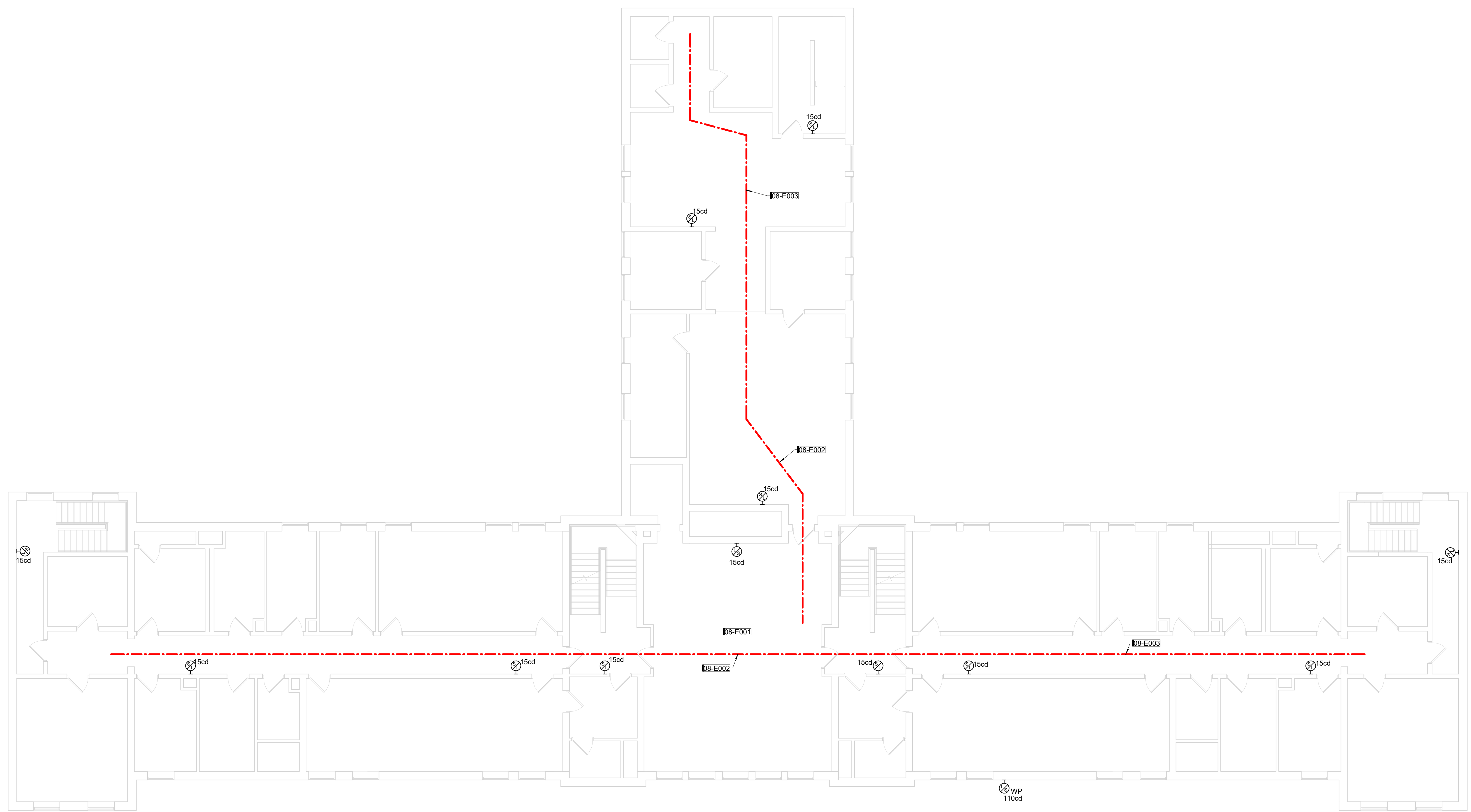
Iowa Department of Administrative Services
1231 354th Street, Woodward, IA 50276

KEYNOTES	
KEY	NOTE
08-E001	FIRE ALARM IN MAPLE LODGE CONNECTED TO FIRE ALARM CONTROL PANEL IN CAMPUS FOOD SERVICE BUILDING. ROUTE FIRE ALARM CABLING BETWEEN BUILDING VIA EXISTING TUNNELS THAT CONNECT THE BUILDINGS. REFER TO 00-0302 FOR CONDUIT ROUTING. FIRE ALARM ANNUNCIATION ONLY TO ACTIVATE IN THE BUILDINGS WHERE DETECTION DEVICE IS ACTIVATED.
08-E002	LINEAR HEAT DETECTOR WIRE.
08-E003	LINEAR HEAT DETECTOR WIRE SHOWN IN RED TO BE INSTALLED TO ACOUSTIC CEILING. EXISTING CEILING ACOUSTIC CEILING PADS TO BE REMOVED PRIOR TO FIRE ALARM WORK BEGINNING.
08-E004	LINEAR HEAT DETECTOR WIRE SHOWN IN BLACK TO BE INSTALLED TO EXISTING STRUCTURE LOCATIONS DO NOT CONTAIN ACOUSTICAL CEILING.



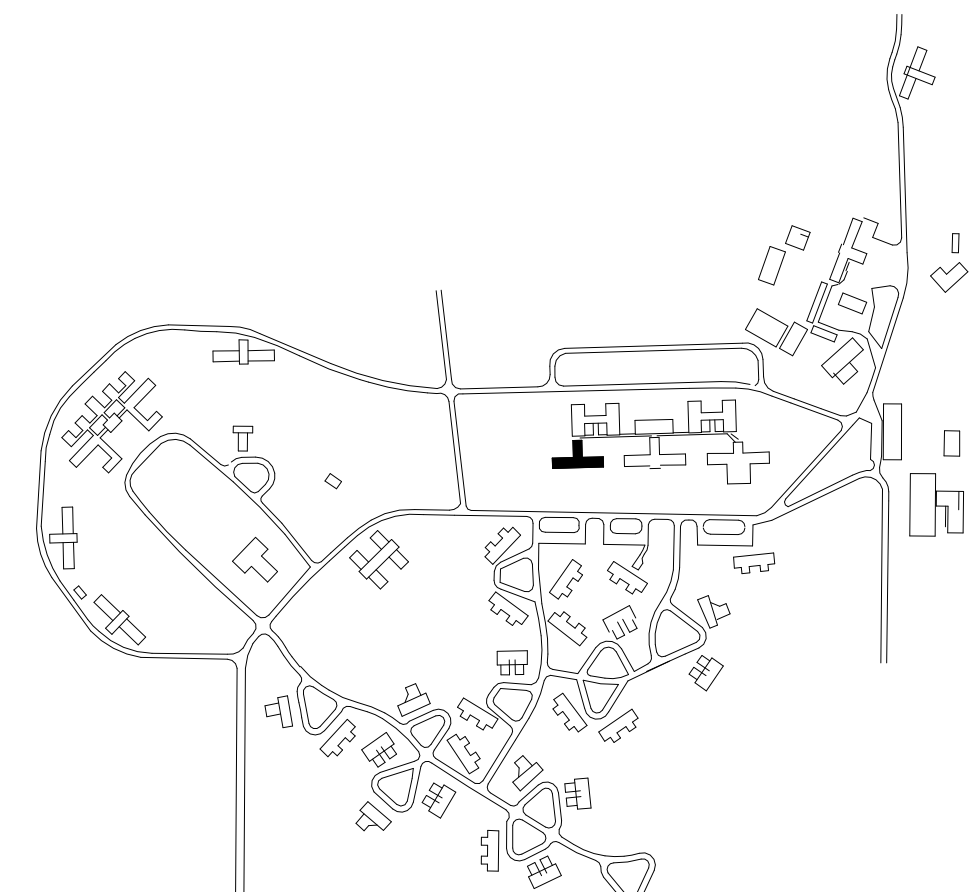
PLAN NORTH
TRUE NORTH

C3 THIRD FLOOR - FIRE ALARM RENOVATION PLAN
1/8" = 1'-0" 0' 12"



PLAN NORTH
TRUE NORTH

A6 SECOND FLOOR - FIRE ALARM RENOVATION PLAN
1/8" = 1'-0" 0' 12"



SECOND & THIRD FLOOR SYSTEMS PLAN

08-E302

DRAWN BY	RML	ACD 2	2026-02-13	PH 04-ADDENDUM #2
APPROVED BY	KJB			
ISSUED FOR	CONSTRUCTION			
ISSUE DATE		2025-12-12		
PROJECT NUMBER		2240007040		
FIELD BOOK				

Iowa Department of Administrative Services
1231 334th Street, Woodward, IA 50276

A B C D E F G H

1

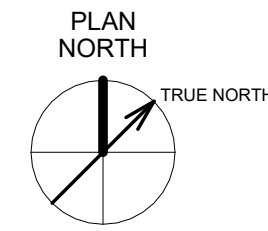
2

3

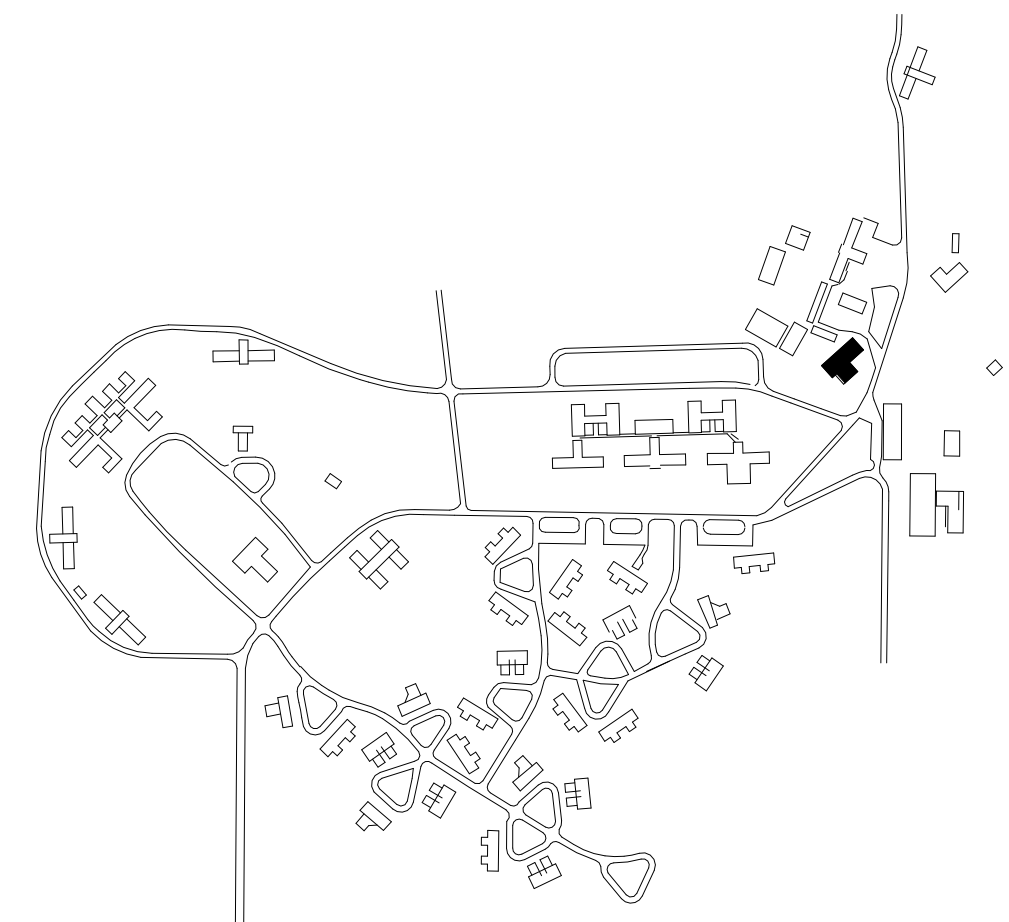
4

5

6



A6 FIRST FLOOR - FIRE ALARM DEMOLITION PLAN
1/8" = 1'-0" 0 12'

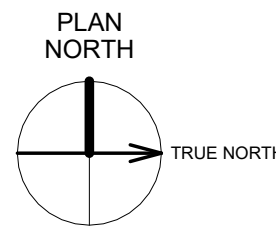


KEY PLAN

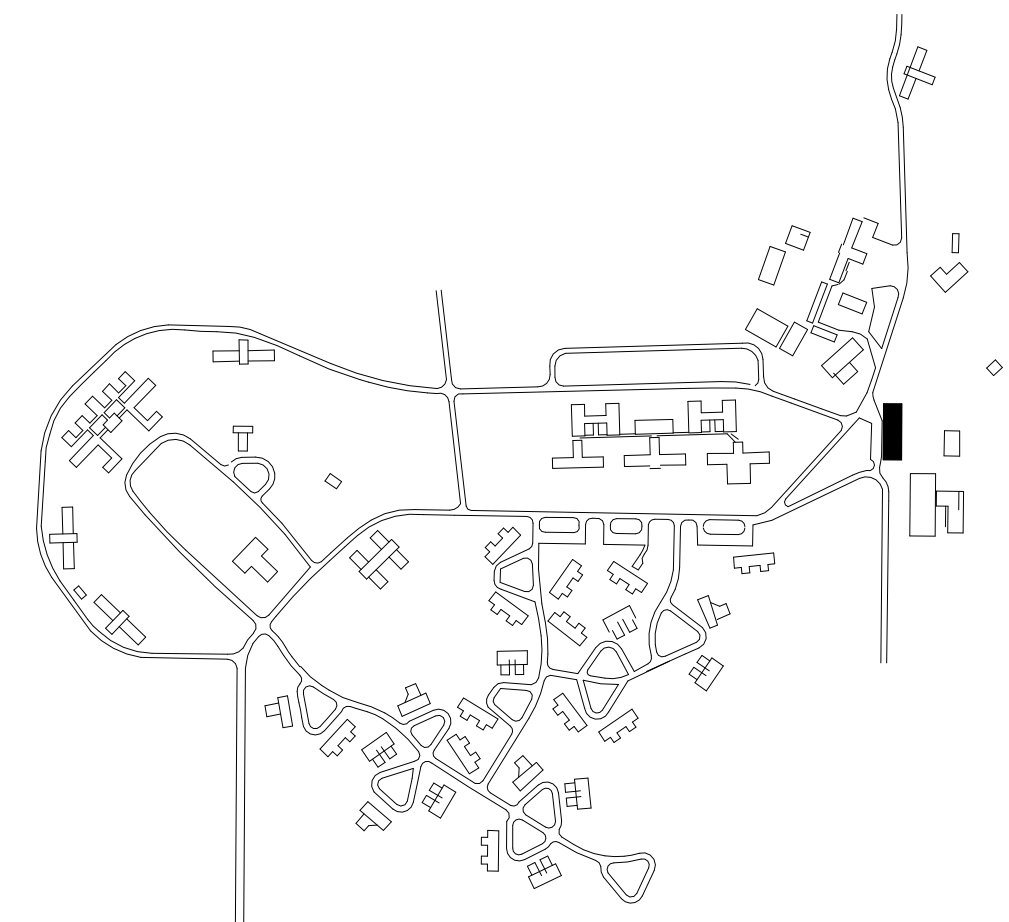
DRAWN BY	ACD 2	2026-02-13	PH 04-ADDENDUM #2
APPROVED BY	KJB		
ISSUED FOR	CONSTRUCTION		
ISSUE DATE	2025-12-12		
PROJECT NUMBER	2240007040		
FIELD BOOK			

FIRST FLOOR
SYSTEMS
DEMOLITION
PLAN

14-ED301



A5 BASEMENT LEVEL - FIRE ALARM DEMOLITION PLAN
1/8" = 1'-0" 0" 12"



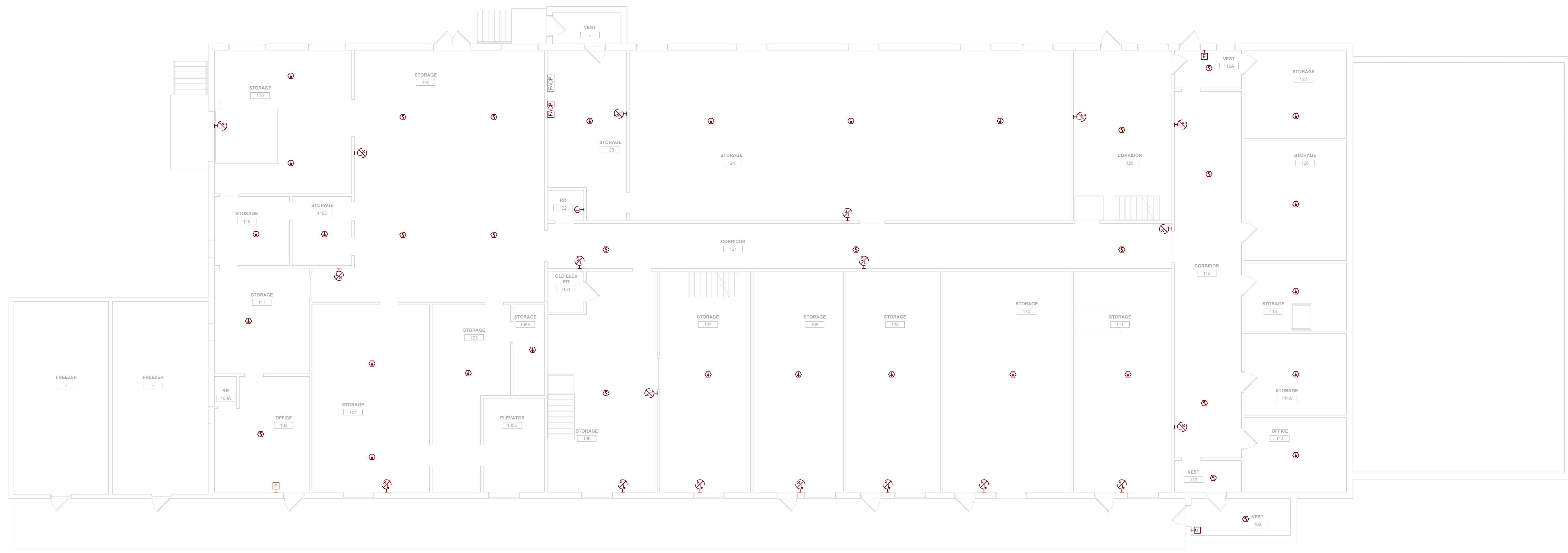
KEY PLAN

**(#9279.40) WRC Fire Alarm Phase 4
19 - SUPPLY DEPOT**

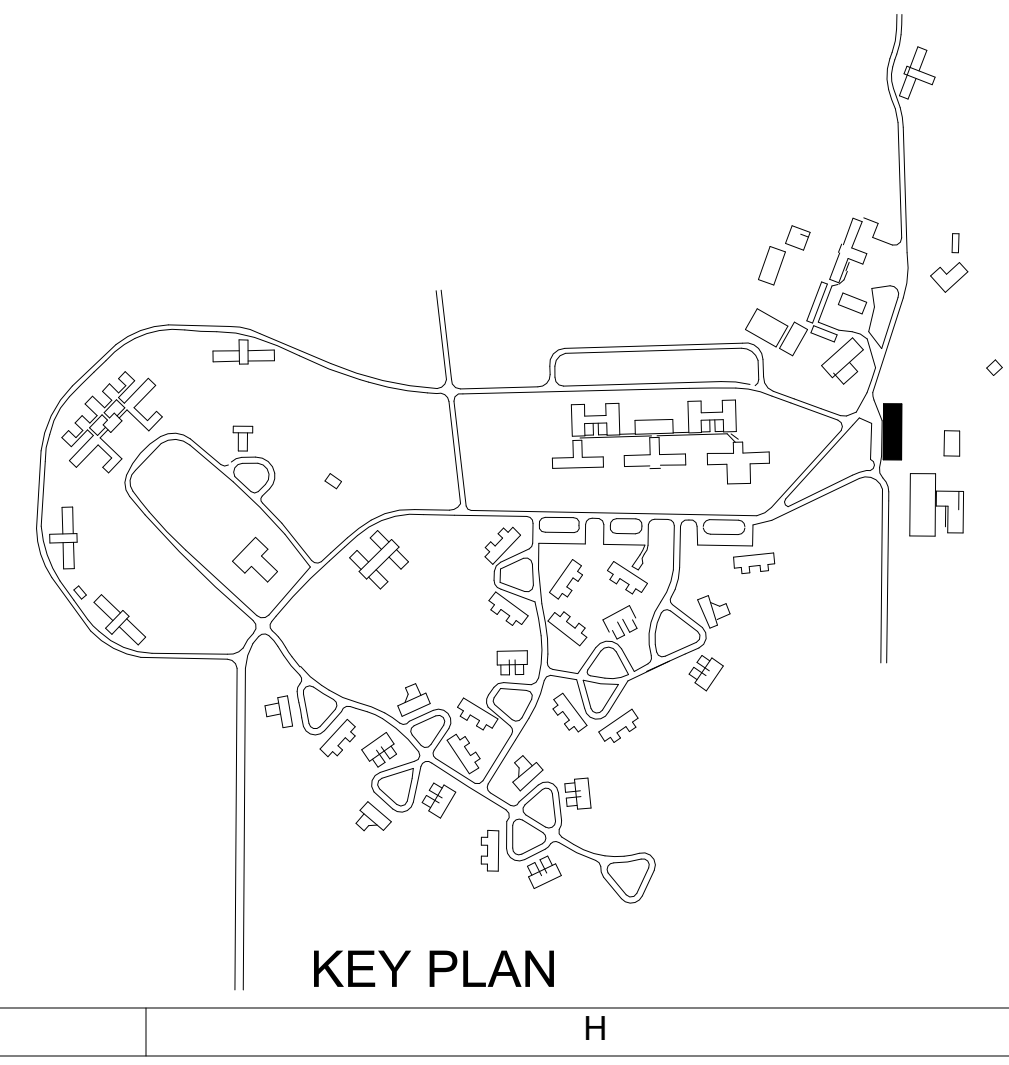
DRAWN BY	RML	ACD 2	2026-02-13	PH 04-ADDENDUM #2
APPROVED BY	KJB			
ISSUED FOR	CONSTRUCTION			
ISSUE DATE		2025-12-12		
PROJECT NUMBER		2240007940		
FIELD BOOK				

**BASEMENT
LEVEL SYSTEMS
DEMOLITION
PLAN**

19-ED300



PLAN NORTH
TRUE NORTH
A6 FIRST FLOOR - FIRE ALARM DEMOLITION PLAN
1/8" = 1'-0" 0" 12"



**(#9279.40) WRC Fire Alarm Phase 4
19 - SUPPLY DEPOT**

DRAWN BY	RML	ACD 2	2026-02-13	PH 04-ADDENDUM #2
APPROVED BY	KJB			
ISSUED FOR	CONSTRUCTION			
ISSUE DATE		2025-12-12		
PROJECT NUMBER		2240007940		
FIELD BOOK				

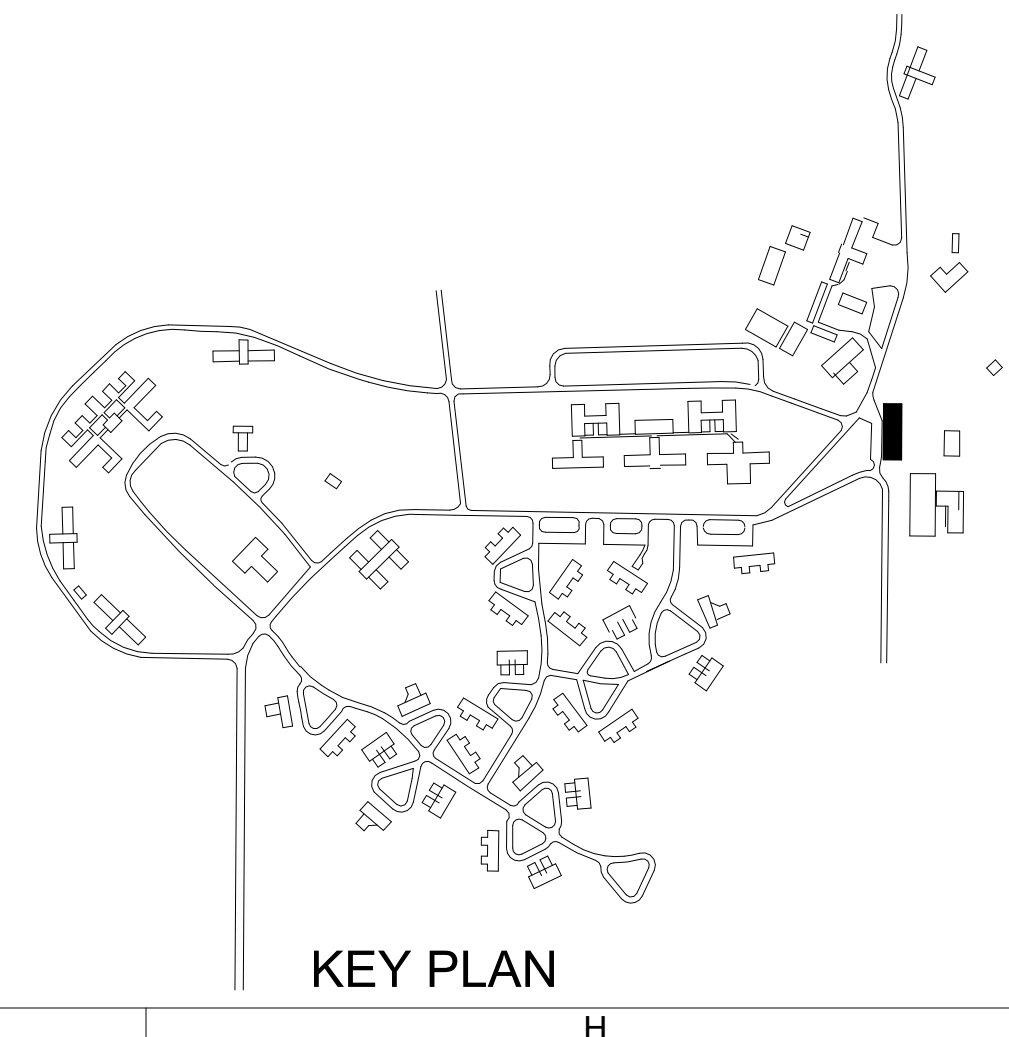
**FIRST FLOOR
SYSTEMS
DEMOLITION
PLAN**

19-ED301

Iowa Department of Administrative Services
1201 354th Street, Woodward, IA 50276



PLAN NORTH
TRUE NORTH
A5 SECOND FLOOR - FIRE ALARM DEMOLITION PLAN
1/8" = 1'-0"
0 12



(#9279.40) WRC Fire Alarm Phase 4
19 - SUPPLY DEPOT

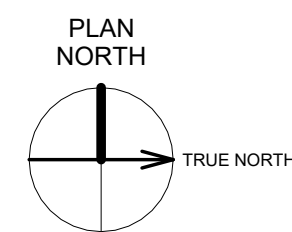
Iowa Department of Administrative Services
1231 354th Street, Woodward, IA 50276

DRAWN BY	RNL
APPROVED BY	KJB
ISSUED FOR	CONSTRUCTION
ISSUE DATE	2025-12-12
PROJECT NUMBER	2240007040
FIELD BOOK	

SECOND FLOOR
SYSTEMS
DEMOLITION
PLAN

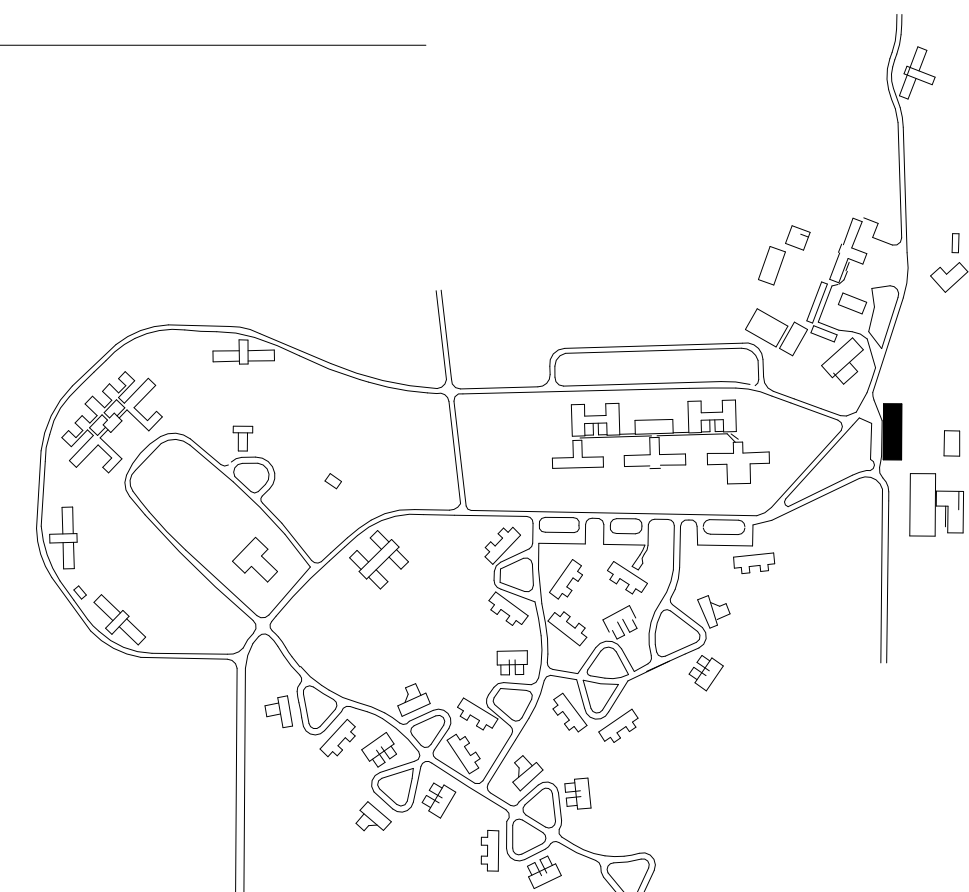
19-ED302

KEYNOTES	
KEY	NOTE
19-E002	LINEAR HEAT DETECTOR WIRE SHOWN IN BLACK TO BE INSTALLED TO EXISTING STRUCTURE. LOCATIONS DO NOT CONTAIN ACOUSTICAL CEILING.



A6 BASEMENT LEVEL - FIRE ALARM RENOVATION PLAN

1/8" = 1'-0" 0 12'



KEY PLAN

(#9279.40) WRC Fire Alarm Phase 4
19 - SUPPLY DEPOT

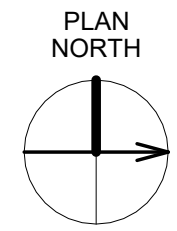
DRAWN BY	RML	ACD 2	2026-02-13	PH 04-ADDENDUM #2
APPROVED BY	KJB			
ISSUED FOR	CONSTRUCTION			
ISSUE DATE			2025-12-12	
PROJECT NUMBER			2240007040	
FIELD BOOK				

BASEMENT LEVEL SYSTEMS PLAN

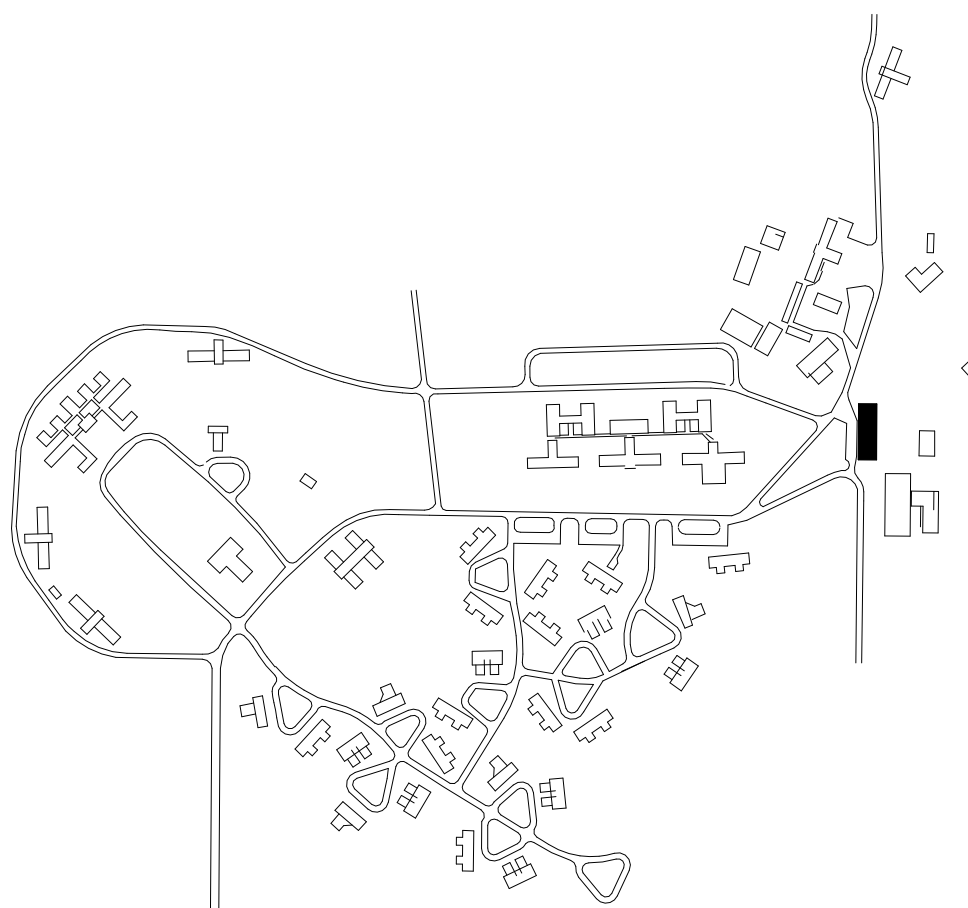
19-E300

Iowa Department of Administrative Services
1201 354th Street, Woodward, IA 50276

KEYNOTES	
KEY	NOTE
19-E001	EXISTING FACP INSTALLED IN PREVIOUS PHASE. FURNISH AND INSTALL NEW SINGLE MODE NETWORK CARD IN EXISTING FIRE ALARM CONTROL PANEL.
19-E002	LINEAR HEAT DETECTOR WIRE SHOWN IN BLACK TO BE INSTALLED TO EXISTING STRUCTURE. LOCATIONS DO NOT CONTAIN ACOUSTICAL CEILING.



A5 FIRST FLOOR - FIRE ALARM RENOVATION PLAN
1/8" = 1'-0" 0 12



KEY PLAN

(#9279.40) WRC Fire Alarm Phase 4
19 - SUPPLY DEPOT

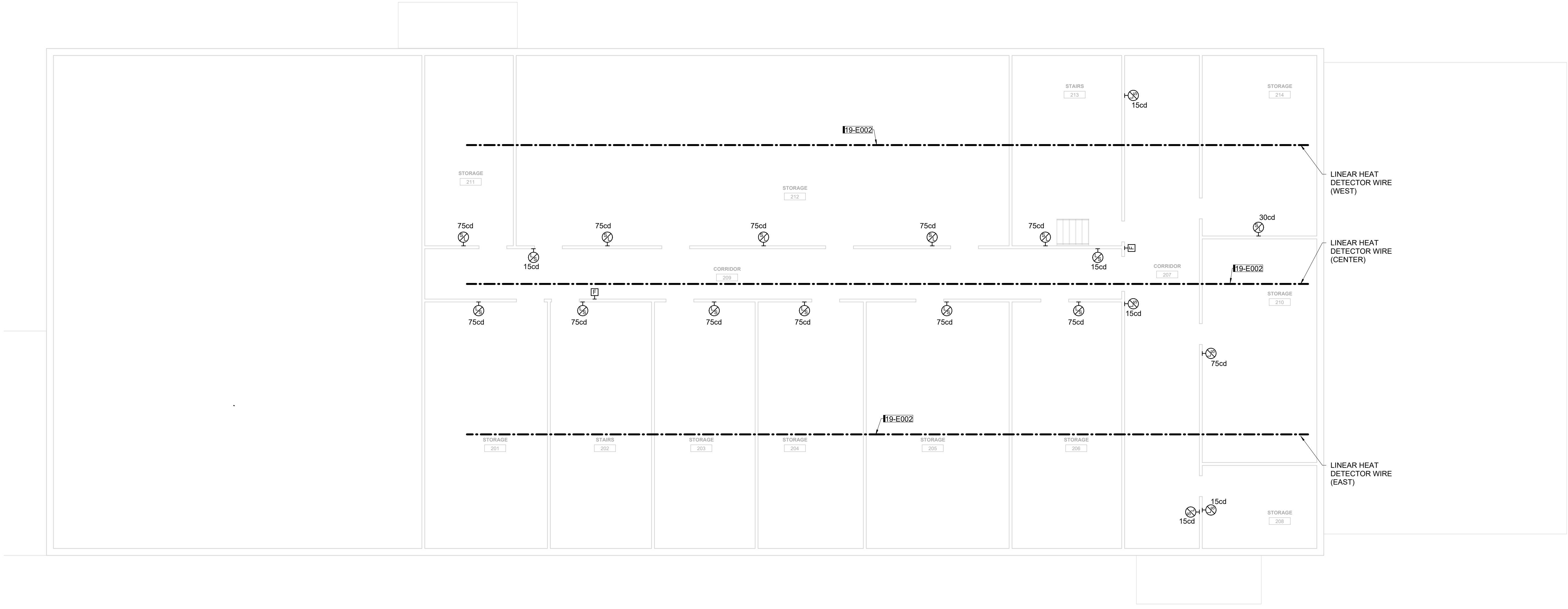
ADD 1	01-29-26	PH 04-ADDENDUM #1
ADD 2	2026-02-13	PH 04-ADDENDUM #2
RW	KJB	
DRAWN BY		
APPROVED BY		
ISSUED FOR	CONSTRUCTION	
ISSUE DATE	2025-12-12	
PROJECT NUMBER	2240007940	
FIELD BOOK		

FIRST FLOOR
SYSTEMS PLAN

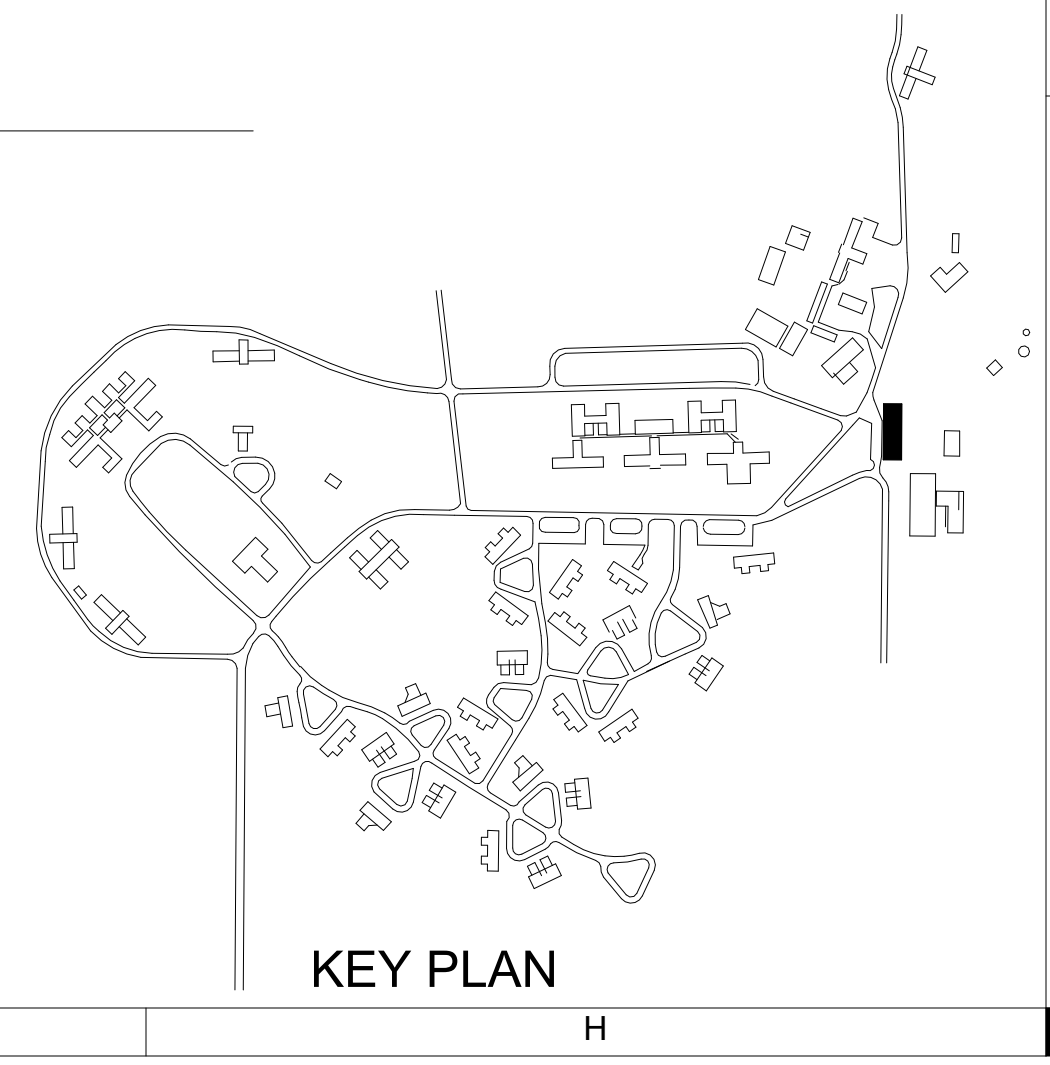
19-E301

Iowa Department of Administrative Services
1231 354th Street, Woodward, IA 50276

KEYNOTES	
KEY	NOTE
19-E002	LINEAR HEAT DETECTOR WIRE SHOWN IN BLACK TO BE INSTALLED TO EXISTING STRUCTURE. LOCATIONS DO NOT CONTAIN ACCUSTICAL CEILING.



PLAN NORTH
TRUE NORTH
A6 SECOND FLOOR - FIRE ALARM RENOVATION PLAN
1/8" = 1'-0"
0' 12'



SECOND FLOOR SYSTEMS PLAN

(#9279.40) WRC Fire Alarm Phase 4
19 - SUPPLY DEPOT

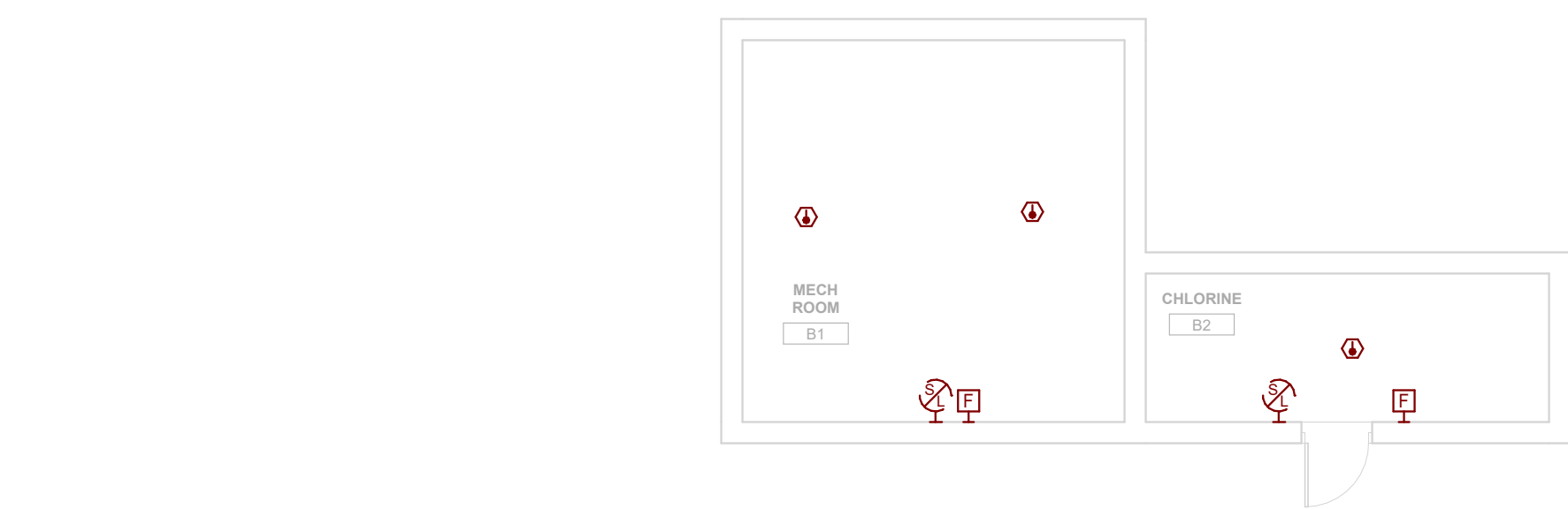
Iowa Department of Administrative Services
1231 354th Street, Woodward, IA 50276

DRAWN BY	RML	ACD 2	2026-02-13	PH 04-ADDENDUM #2
APPROVED BY	KJB			
ISSUED FOR	CONSTRUCTION			
ISSUE DATE		2025-12-12		
PROJECT NUMBER		2240007040		
FIELD BOOK				

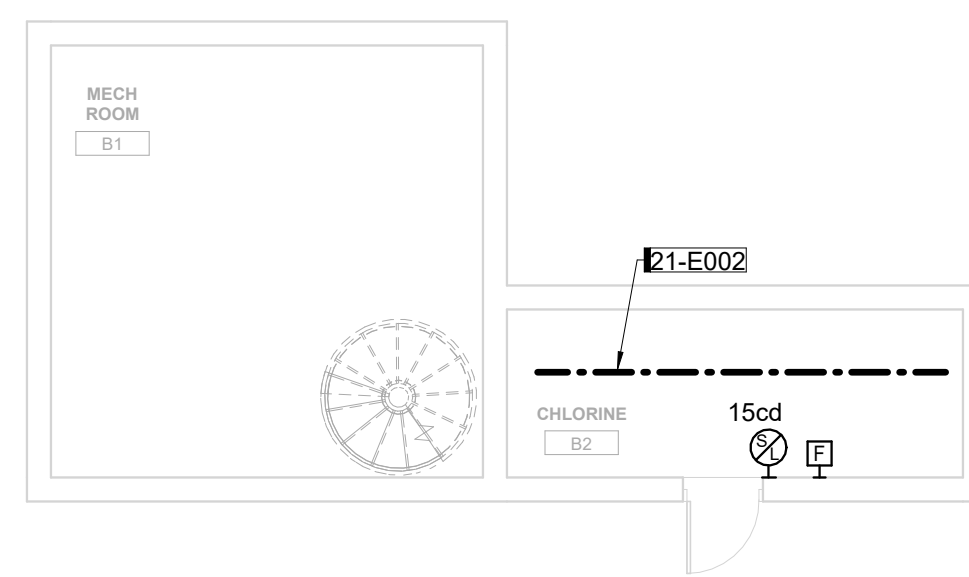
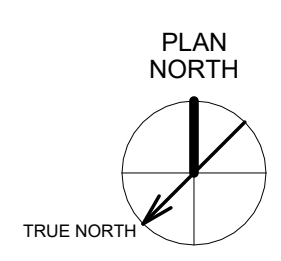
2
ADD

19-E302

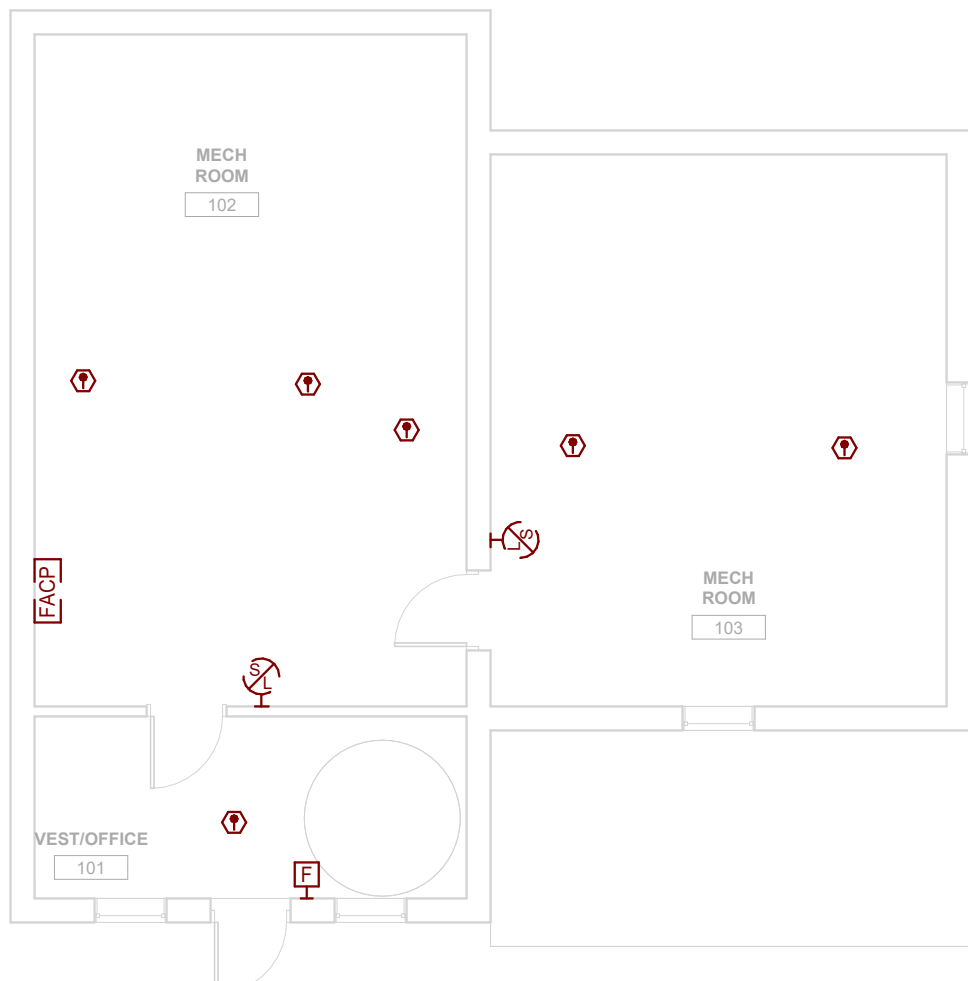
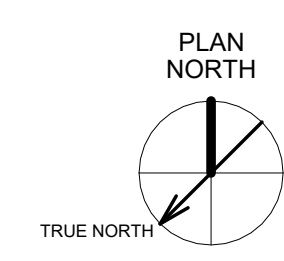
KEYNOTES	
KEY	NOTE
21-E001	FIRE ALARM IN WATER TREATMENT BUILDING CONNECTED TO FIRE ALARM CONTROL PANEL IN CENTRAL DISTRIBUTION BUILDING. ROUTE FIRE ALARM CABLING BETWEEN BUILDING VIA EXISTING CONDUIT. REFER TO 00-G002 FOR CONDUIT ROUTING. FIRE ALARM ANNUNCIATION ONLY TO ACTIVATE IN THE BUILDING WHERE DETECTION DEVICE IS ACTIVATED.
21-E002	LINEAR HEAT DETECTOR WIRE
21-E003	PROVIDE SCAFFOLDING IN THESE AREAS TO INSTALL FIRE ALARM.



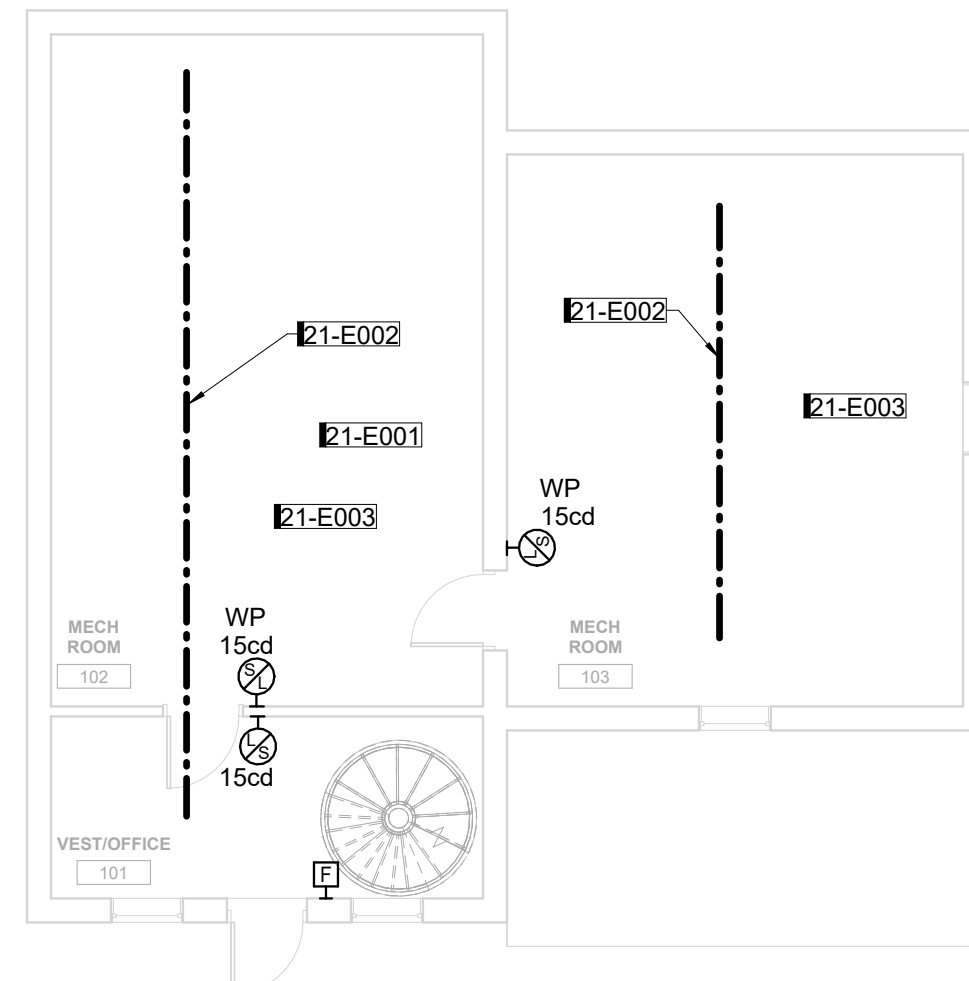
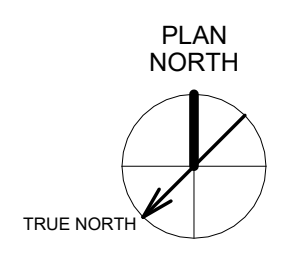
A3 BASEMENT LEVEL - FIRE ALARM DEMOLITION PLAN
1/8" = 1'-0" 0 12



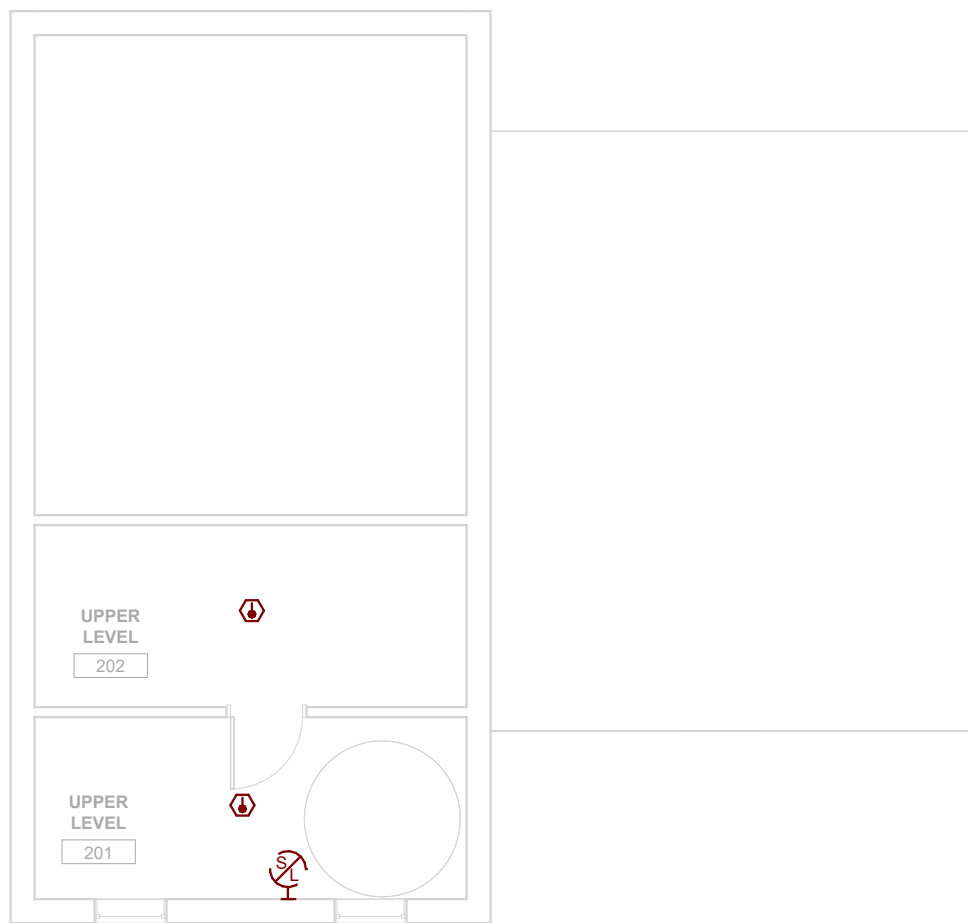
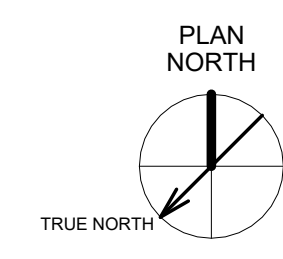
E3 BASEMENT LEVEL - FIRE ALARM RENOVATION PLAN
1/8" = 1'-0" 0 12



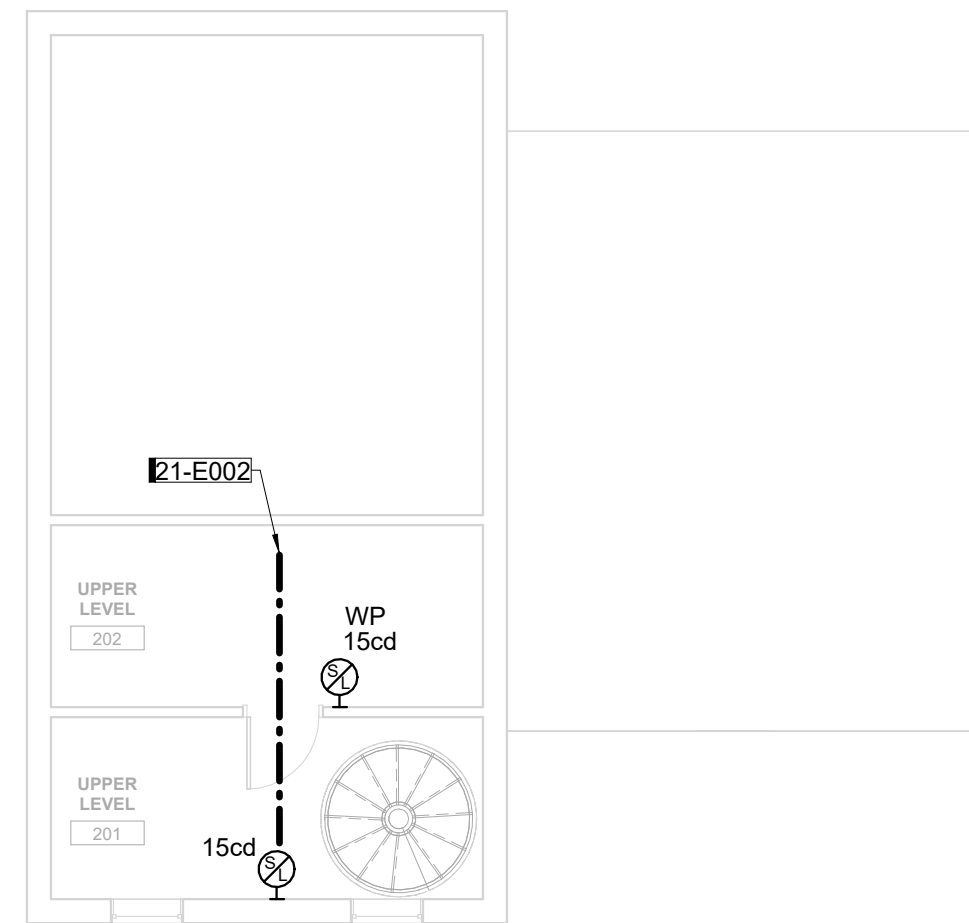
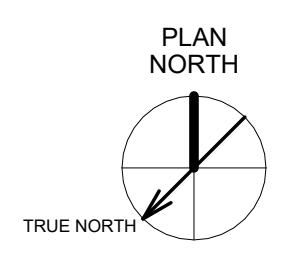
A5 FIRST FLOOR - FIRE ALARM DEMOLITION PLAN
1/8" = 1'-0" 0 12



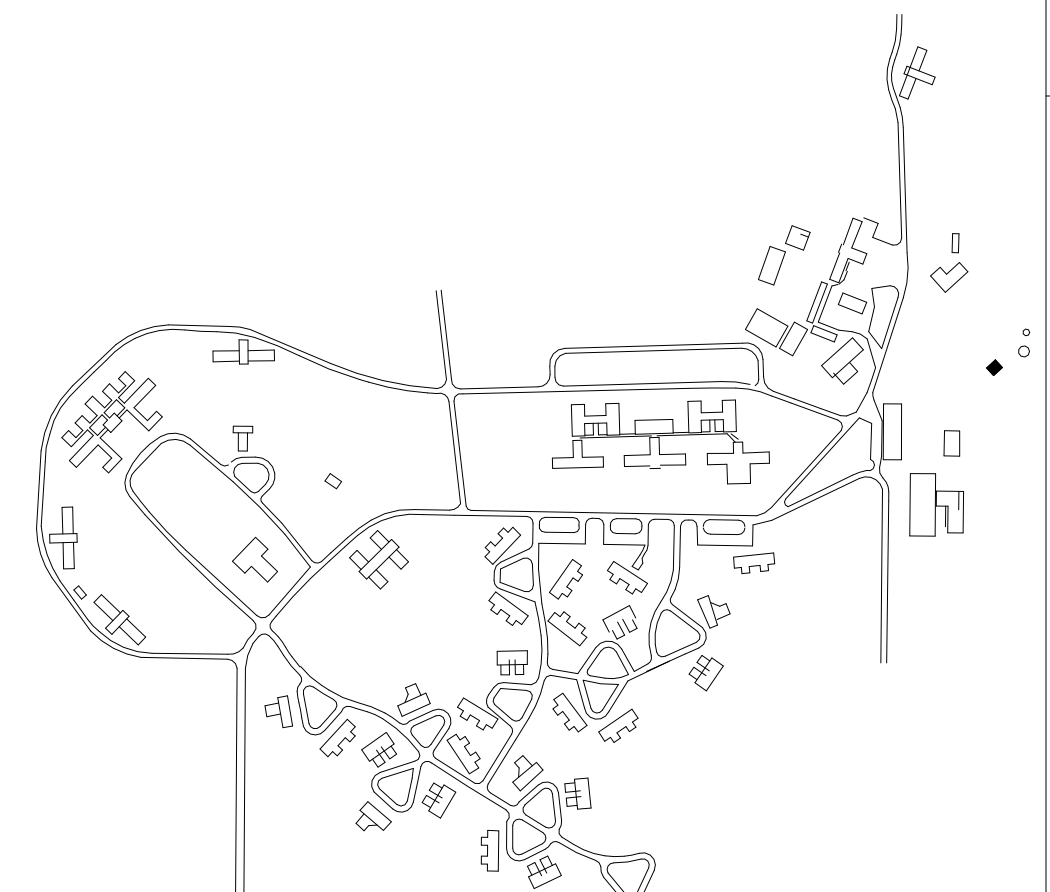
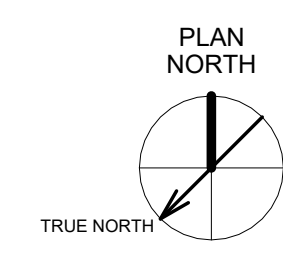
E5 FIRST FLOOR - FIRE ALARM RENOVATION PLAN
1/8" = 1'-0" 0 12



A6 SECOND FLOOR - FIRE ALARM DEMOLITION PLAN
1/8" = 1'-0" 0 12



E6 SECOND FLOOR - FIRE ALARM RENOVATION PLAN
1/8" = 1'-0" 0 12



SYSTEMS PLAN
DRAWN BY: RML
APPROVED BY: KJB
ISSUED FOR: CONSTRUCTION
ISSUE DATE: 2025-12-12
PROJECT NUMBER: 2240007040
FIELD BOOK

RML	ACD 2	2025-02-13	PH 04-ADDENDUM #2
(#9279.40) WRC Fire Alarm Phase 4			
21 - WATER TREATMENT			
Iowa Department of Administrative Services 1231 354th Street, Woodward, IA 50276			

21-E301

2 ADD