

Iowa Department of Natural Resources
Volga River Recreation Area, Fayette County
26-03-33-01 Volga River Rec Area-Frog Hollow Bridge-Deck Replacement
Project Description:

Work consists of removing existing guard rail, bridge deck and bridge beam nailers and replace.

GENERAL NOTES:

Verify actual locations and elevations with DNR Engineer.

Grass areas around the structures will be protected and minimally disturbed.

No work will be allowed from 12 noon Friday until the following Monday. No work on holidays.
Approval may be allowed per the Iowa DNR Engineer and/or Park Manager.

Trail will be closed while work is being performed. Iowa DNR Staff will set signage

All work shall conform to and be performed in accordance with all applicable codes and ordinances

The contractor shall visit the site and inspect the project area and thoroughly familiarize themselves with the actual job conditions prior to bidding and start of work. Failure to visit the project site shall not relieve contractor from performing the work in accordance to the plans, specifications, special provisions and contract.

The contractor shall verify, at the site, all dimension and conditions shown on the plans and shall notify the DNR Engineer of any discrepancies, omissions, and/or conflicts prior to proceeding with the work.

It shall be the contractor's responsibility to provide waste areas or disposal sites for excess material (excavated material or broken asphalt/concrete) which is not desirable to be incorporated into the work involved on this project. No material shall be placed within the right-of-way, unless specifically stated in the plans or approved by the DNR Engineer.

The contractor shall not disturb desirable grass areas or desirable trees outside the construction limits. The contractor shall not be permitted to park or service vehicles and equipment or use these areas for storage of materials. Storage, parking and service areas will be subject to the approval of the DNR Engineer.

Where utilities and fixtures are encountered within the construction area, it shall be the responsibility of the contractor to notify DNR Engineer of those utilities prior to the beginning of any construction. No claims for additional compensation will be allowed to the contractor for any interference or delay.

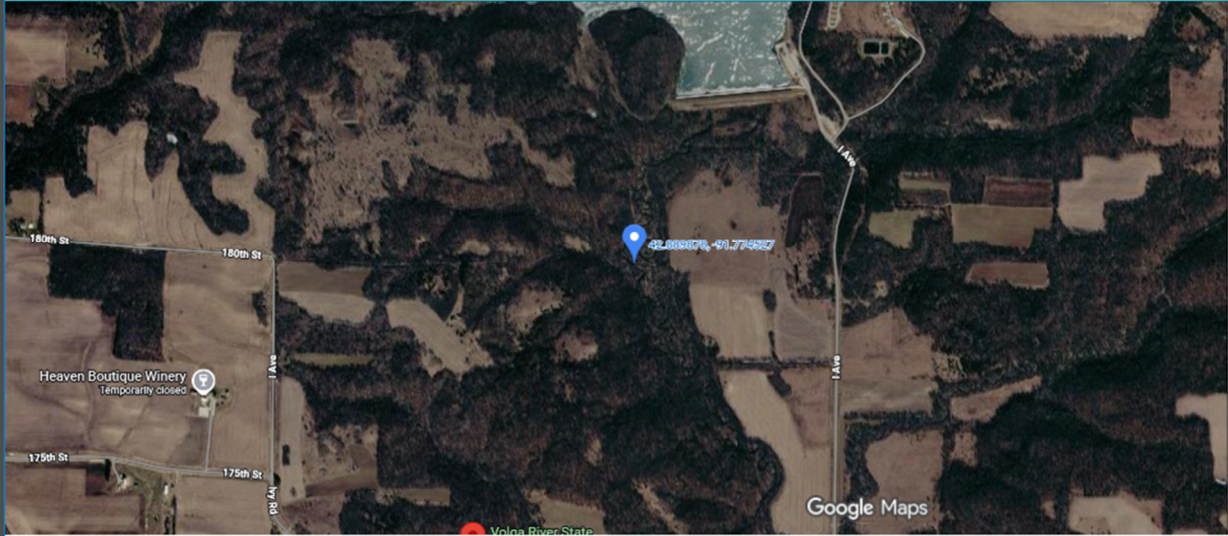
Frog Hollow Bridge is on the Frog Hollow pedestrian trail. Access is limited to using the trail with skid loaders and UTV's. approximate coordinates are 42°53'23.5"N 91°46'28.4"W. To verify location please contact Volga River Park Manager Austin Lette at austin.lette@dnr.iowa.gov or 515.975.8819.

Estimated Project Quantities			
ITEM NO.	ITEM	UNIT	TOTAL
1	Mobilization	L.S.	1
2	Demolition	L.S.	1
3	Bridge Beam Nailers	L.S.	1
4	Bridge Deck	L.S.	1
5	Guard Rail	L.S.	1

Estimate Reference Information	
ITEM No.	DESCRIPTION
3	Approximately 114 linear feet. Install 2x pressure treated wood nailer using Techfast timber to steel fastener, or equivalent.
4	Approximately 532 square feet of 3 x 12 pressure treated timbers
5	Approximately linear feet. All pressure treated wood. 4x4 posts with max spacing of 6 feet and height of 60 inches above bridge deck with 2 mid rails and top rail with 2x6 cap.







Imagery ©2026 Airbus, Maxar Technologies, USDA/FPAC/GEO, CNES / Airbus, Map data ©2026 1000 ft

