



Purchasing & Contracting Office
Camp Dodge – Building 3465
7105 NW 70th Avenue
Johnston, Iowa 50131-1824

IOWA
DEPARTMENT OF
PUBLIC DEFENSE

NGIA-SCO

March 3, 2022

MEMORANDUM FOR: ALL BIDDERS

SUBJECT: Addendum #1 to RFQ # RJ2022S0009 – Cross Connection Survey

ADDENDUM # 3

I. Questions and Answers

The following questions were received for the above referenced RFB.

Question 1: Can you provide information regarding each of the facilities listed for cross connection survey, e.g., function of building, i.e., barracks, cafeteria, commissary or etc.?

Answer 1:

Answered on Addendum #1

Question 2: Are you able to provide more information on the buildings/sites to be surveyed?

Answer 2:

Answered on Addendum #2

Question 3: Can you provide information collected in the last cross connection survey with respect to an inventory of backflow assemblies and locations, as well as cross connections summaries?

Answer 3:

Enclosed

Prepared for:

132D CES
3100 McKinley Ave.
Des Moines, IA 50321

CROSS CONNECTION CONTROL SURVEY

for



Site Review: July 24-27, 2017
Final Generation: August 11, 2017

Prepared by:

Hydro Corp
5700 Crooks Road – Suite 100
Troy, Michigan 48098
P: 248.250.5000 or F: 248.786.1789

Table of Contents

1.0	GENERAL	1
1.1	INTRODUCTION	1
1.1.1	PURPOSE	1
1.1.2	INTENT	1
1.2	EXECUTIVE SUMMARY	2
1.3	RELEVANT RULES AND LAWS – BACKFLOW PREVENTION	3
1.3.1	Containment - of the city water supply may be required on the main inlet to any fire system as detailed by:.....	3
1.3.2	Isolation of fixtures/water using equipment within a facility is detailed in:	3
1.3.3	Testing and tester requirements are detailed in:	3
1.3.4	Survey and inspection requirements of potable water systems for cross connections are detailed in:	3
2.0	CROSS CONNECTION CONTROL PROGRAM SURVEY	4
2.1	CROSS CONNECTION CONTROL SURVEY RESULTS	5
2.2	EXISTING TESTABLE BACKFLOW PREVENTION ASSEMBLIES	18
2.2.1	BLDG. 100 – Wing.....	21
2.2.2	BLDG. 101 - CST.....	23
2.2.3	BLDG. 110 – FSS/Medical/DFAC.....	24
2.2.4	BLDG. 124 - TTF	26
2.2.5	BLDG. 125 – Civil Air Patrol	28
2.2.6	BLDG. 132 - BX.....	30
2.2.7	BLDG. 160 - Army	31
2.2.8	BLDG. 180 - DTOC.....	33
2.2.9	BLDG. 240 - COMM	36
2.2.10	BLDG. 300 - Security.....	38
2.2.11	BLDG. 315 – Alert Hangar.....	39
2.2.12	BLDG. 316 – Heating Plant	40
2.2.13	BLDG. 319 – Pump House	41
2.2.14	BLDG. 320 Munitions Admin.	42
2.2.15	BLDG. 322 - Munitions	43
2.2.16	BLDG. 410 - CE.....	44
2.2.17	BLDG. 430 – RPA/ISRG.....	45
2.2.18	BLDG. 440 - LRS.....	48
2.3	REQUIRED CORRECTIVE ACTIONS	50
2.3.1	BLDG. 100 - Wing.....	54
2.3.2	BLDG. 125 – Civil Air Patrol	55
2.3.3	BLDG. 315 – Alert Hangar.....	56
3.0	RECOMMENDATIONS	57
4.0	SUMMARY AND CERTIFICATION STATEMENT	58
5.0	SUGGESTED ACTION PLAN	59
APPENDIX A	i
A.1	GENERAL INFORMATION - PROGRAM IMPLEMENTATION.....	i
A.2	REPORT INFORMATION.....	iii
A.2.1	DEVICE LEGENDS/ABBREVIATIONS	iv
A.2.1.2	CCC SURVEY RESULTS LIST INFORMATION	v

1.0 GENERAL

1.1 INTRODUCTION

This project addresses some of the requirements of AFI 32-1067, Water and Fuel Systems. In accordance with AFI 32-1067, all facilities must be surveyed for Cross Connections a minimum of once every five years. Additional requirements Cross Connection Control requirements include:

Testing and maintenance of backflow prevention assemblies

Education of those responsible for maintenance and decisions pertaining to the potable water distribution system

HydroCorp, was requested to survey and report on the status of the Cross Connection Control program at the 132D Wing, Des Moines, IA.

HydroCorp has had considerable experience with Cross Connection Control and potable water system surveys. HydroCorp has performed Cross Connection Control work in 26 states, as well as Canada, Puerto Rico and Mexico. HydroCorp is an active member of several organizations regarding Cross Connection Control including the American Backflow Prevention Association, the American Water Works Association, and the USC Foundation for Cross Connection Control and Hydraulic Research.

1.1.1 PURPOSE

The purpose of HydroCorp 's involvement is to review in-field the following items:

- Survey each facility for existing and/or potential cross connections
- Review and verify the proper installation of existing backflow prevention devices
- Recommend corrective actions where a risk of contamination may exist

In addition, HydroCorp was to generate a report outlining the findings and recommending future efforts required to properly maintain the Cross Connection Control Program.

This report consists of survey information concerning existing backflow prevention methods, cross connection hazard assessments, and recommended corrective actions which may assist base personnel with determining a cost for implementation of recommendations. Also, some of the rules and codes outlining requirements for proper Cross Connection Control have been included as part of this report.

1.1.2 INTENT

It is the intention of this survey to identify the requirements and general concerns throughout the base, and make recommendations for the on-going Cross Connection Control Program. This work provides specific listings of both existing backflow prevention methods, and questionable areas/installations with recommendations for correction. HydroCorp remains available to assist 132D Wing personnel in any capacity required to address their requirements.

1.2 EXECUTIVE SUMMARY

This report will be used as a guide for base personnel to determine how it will operate the program. The latest review of the potable water system was completed December 15, 2016. Hydro Corp is grateful for the support from all parties that enabled the completion of this project. Information contained in this report is as was determined by HydroCorp field personnel.

Both “isolation” and “containment” hazards have been addressed by this report. “Containment”, also referred to as “premise isolation”, is the installation of a backflow prevention device or assembly between the facility and public water distribution system. Containment minimizes the opportunity for water of questionable quality to backflow from the facility into the public water distribution system; however, “containment” does not protect the water within the facility or the occupants of the facility from the hazards of internal cross connections. “Isolation” refers to point of use fixture protection within a facility that is necessary to ensure the facility’s internal potable water distribution system is protected against backflow.

The existing backflow prevention devices and potable water uses have been evaluated for the facilities that are connected to the base public water distribution system. Base personnel assisted in determining which facilities received water service and required surveys. Twenty-three (23) locations were surveyed based on information provided by 132D Wing staff.

There are currently fifty-seven (57) recommendations for the 132D Wing noted in this report. A table summarizing recommendations has been included – see below.

2017 SURVEY RESULTS

RECOMMENDATION TYPE	Total
Backflow Prevention Devices to be installed:	34
• <i>Testable Assemblies – PVB, RP, DCV and SVB</i>	(6)
• <i>Non-Testable Devices – AG, AVB, HBVB, AFHBVB, VMBP, LFDC, LFVB, and VDCV</i>	(28)
Recommendations for the alteration of existing installations, i.e. installing water wasting tees, re-plumb existing assemblies/devices	23
TOTAL RECOMMENDATIONS	57

1.3 RELEVANT RULES AND LAWS – BACKFLOW PREVENTION

Effective 4 February 2015, Air Force Instruction 32-1067, Water and Fuel Systems, provides requirements which Air Force Guard units must comply with. Section 3.3.4.8 requires all facilities be surveyed on a five – (5) year frequency.

In addition to AFI 32-1067, the following rules and codes were used as guidance while preparing this report:

1.3.1 Containment - of the city water supply may be required on the main inlet to any fire system as detailed by:

- AFI 32-1067, section 3.3.4.6
- American Water Works Association M-14 Manual
- Uniform Plumbing Code
- International Plumbing Code

Note: Current codes require a double check valve assembly as minimum requirement on any new systems. AFI 32-1067, section 3.3.4.6.2 exempts existing systems from this requirement under certain conditions. The recommendations in this report will reflect the most stringent standard. Be advised that fire systems that use non-potable water or where chemicals additives are introduced to the system (i.e., AFFF) are not exempt from backflow prevention requirements.

1.3.2 Isolation of fixtures/water using equipment within a facility is detailed in:

- AFI 32-1067
- Uniform Plumbing Code
- International Plumbing Code

1.3.3 Testing and tester requirements are detailed in:

- AFI 32-1067, section 3.3.4.9
- Uniform Plumbing Code
- International Plumbing Code
- LAC Title 51, Part XII, section 346

1.3.4 Survey and inspection requirements of potable water systems for cross connections are detailed in:

- AFI 32-1067

2.0 CROSS CONNECTION CONTROL PROGRAM SURVEY

Survey Status:

A formal Cross Connection Control survey was completed on July 27, 2017. In accordance with AFI 32-1067 all facilities must be surveyed on a five – (5) year frequency. It may be acceptable to conduct surveys of one-fifth - (1/5) of the facilities on an annual basis to meet this requirement.

Survey Methodology:

HydroCorp field staff utilized the “isolation” approach while conducting the survey. Beginning at the service connection for each facility/site all points of use within the facility were evaluated for proper backflow protection. Existing “containment” at the service connection for each facility’s potable water supply and fire protection systems (as applicable) have been annotated in this report. Recommendations have not been made for any further “containment” of domestic service connections. “Isolation” is the preferred method of protection for Air Force Installations as it protects both the water distribution system and the internal water supply of each facility.

Testing:

Reduced pressure principle backflow preventers (RP’s), pressure vacuum breakers (PVB’s), spill resistant vacuum breakers (SVB’s), and double check valve assemblies (DCV’s) require testing on an annual basis. There are presently **fifty-six (56)** existing backflow prevention assemblies HydroCorp identified that require annual testing.

A formal testing program has been developed for the entire site. The backflow program manager should maintain a program for testing of all existing backflow prevention assemblies. It should also be noted that backflow prevention assemblies are to be tested immediately upon installation **before** resuming service to the fixture being served. Code and/or Federal/State requirements for backflow prevention device testing and tester qualifications are identified in the Relevant Rules, Section 1.3.3 of this report.

2.1 CROSS CONNECTION CONTROL SURVEY RESULTS

132b Wing - Survey Results

Facility Number	Facility Name	Device Number	Hazard Level	Protection Type	Cross-Connection Type	Location	Device Type	Manufacturer	Model	Size	Serial Number	Recommendation	Equipment Status	Comments
BLDG. 100	WING	100-1E	High - Contaminant	Containment	Both	Boiler Room #130	RP	Watts	909	4	Illegible		Installed Properly	Containment Assembly at Water Meter
BLDG. 100	WING	100-2R	High - Contaminant	Isolation	Backsiphonage	Boiler Room #130	HBVB			0.75		Install Hose Bibb Vacuum Breaker (ASSE #1011)	Install Required	Hose Threads of Slop Sink
BLDG. 100	WING	100-3E	High - Contaminant	Isolation	Both	Boiler Room #130	RP	Watts	009 M2	0.75	64879		Installed Properly	Treated Boiler
BLDG. 100	WING	100-4E	High - Contaminant	Isolation	Backsiphonage	Boiler Room #130	HBVB			0.75			Installed Properly	Hose Bibb on Wall
BLDG. 100	WING	100-5E	High - Contaminant	Isolation	Both	Hallway Outside of Boiler Room #130	AVB			0.5			Install Required	Slop Sink - Supplies Soap Dispenser Through a Valved Wye Connection
BLDG. 100	WING	100-6E	High - Contaminant	Isolation	Backsiphonage	Hallway Outside of Boiler Room #130	AG			1			Install Required	Soap Dispenser (ASSE #1055B) - Supplied From Slop Sink Through a Vavled Wye Connection
BLDG. 100	WING	100-7R	High - Contaminant	Isolation	Both	Hallway Outside of Boiler Room #130	Install					Remove Valved Wye Connection From Hose Threads of Slop Sink and Install Water Wasting Tee	Install Required	Slop Sink - Supplies Soap Dispenser Through a Valved Wye Connection - No Valves Allowed Downstream of Vacuum Breaker ASSE 1001 or ASSE 1011 - Tee Will Supply Valved Wye and Soap Dispenser
BLDG. 100	WING	100-8E	High - Contaminant	Isolation	Backsiphonage	Next to Slop Sink in Hallway Outside of Boiler Room #130	HBVB			0.75			Installed Properly	Hose Bibb
BLDG. 100	WING	100-9E	High - Contaminant	Isolation	Backsiphonage	Next to Slop Sink in Hallway Outside of Boiler Room #130	HBVB			0.75			Installed Properly	Hose Bibb
BLDG. 100	WING	100-10E	High - Contaminant	Isolation	Backsiphonage	Next to Slop Sink in Hallway Outside of Boiler Room #130	HBVB			0.75			Installed Properly	Hose Bibb
BLDG. 100	WING	100-11E	High - Contaminant	Containment	Both	Pump Room #148	DCV	Ames	2000 SE	8	2EL0768		Repair/Replace	Fire Protection System - System Contains Foam - Inappropriate Backflow Preventer
BLDG. 100	WING	100-12R	High - Contaminant	Containment	Both	Pump Room #148	RP			8		Install Reduced Pressure Backflow Prevention Assembly (ASSE #1013)	Install Required	Supply to Fire Protection system in Pump Room #148 - Replaces Inappropriate Existing DCV Due to Foam System
BLDG. 100	WING	100-13R	High - Contaminant	Isolation	Backsiphonage	West Hangar Next to Eyewash	HBVB			0.75		Install Hose Bibb Vacuum Breaker (ASSE #1011)	Install Required	Hose Threads of Hot Water Hose Bibb
BLDG. 100	WING	100-14R	High - Contaminant	Isolation	Backsiphonage	West Hangar Next to Eyewash	HBVB			0.75		Install Hose Bibb Vacuum Breaker (ASSE #1011)	Install Required	Hose Threads of Cold Water Hose Bibb
BLDG. 100	WING	100-15R	High - Contaminant	Isolation	Backsiphonage	Laundry Room	HBVB			0.75		Install Hose Bibb Vacuum Breaker (ASSE #1011)	Install Required	Hose Threads of Hot Water Hose Bibb (NOTE: Hose Bibb Vacuum Breakers not Required if Washing Machine Installed)
BLDG. 100	WING	100-15R	High - Contaminant	Isolation	Backsiphonage	Laundry Room	HBVB			0.75		Install Hose Bibb Vacuum Breaker (ASSE #1011)	Install Required	Hose Threads of Cold Water Hose Bibb (NOTE: Hose Bibb Vacuum Breakers not Required if Washing Machine Installed)
BLDG. 100	WING	100-17E	High - Contaminant	Isolation	Backsiphonage	South East Wall of West Hangar	HBVB			0.75			Installed Properly	Hose Bibb
BLDG. 100	WING	100-18E	High - Contaminant	Isolation	Backsiphonage	Wing Classroom	AG			1			Installed Properly	Ice Machine Condenser Drain
BLDG. 100	WING	100-19E	High - Contaminant	Isolation	Backsiphonage	Wing Classroom Bar Area	AG			1			Installed Properly	Ice Machine Condenser Drain
BLDG. 100	WING	100-20E	High - Contaminant	Isolation	Both	Janitor's Room #221	AVB			0.5			Install Required	Slop Sink - Supplies Soap Dispenser Through a Valved Wye Connection
BLDG. 100	WING	100-21E	High - Contaminant	Isolation	Backsiphonage	Janitor's Room #221	AG			1			Install Required	Soap Dispenser (ASSE #1055B) - Supplied From Slop Sink Through a Vavled Wye Connection
BLDG. 100	WING	100-22R	High - Contaminant	Isolation	Both	Janitor's Room #221	Install					Remove Valved Wye Connection From Hose Threads of Slop Sink and Install Water Wasting Tee	Install Required	Slop Sink - Supplies Soap Dispenser Through a Valved Wye Connection - No Valves Allowed Downstream of Vacuum Breaker ASSE 1001 or ASSE 1011 - Tee Will Supply Valved Wye and Soap Dispenser

Facility Number	Facility Name	Device Number	Hazard Level	Protection Type	Cross-Connection Type	Location	Device Type	Manufacturer	Model	Size	Serial Number	Recommendation	Equipment Status	Comments
BLDG. 100	WING	100-23R	High - Contaminant	Isolation	Backsiphonage	Janitor's Room #221	HBVB			0.75		Install Hose Bibb Vacuum Breaker (ASSE #1011)	Install Required	Hose Threads of Hot Water Hose Bibb
BLDG. 100	WING	100-24R	High - Contaminant	Isolation	Backsiphonage	Janitor's Room #221	HBVB			0.75		Install Hose Bibb Vacuum Breaker (ASSE #1011)	Install Required	Hose Threads of Hot Water Hose Bibb
BLDG. 100	WING	100-25E	High - Contaminant	Isolation	Both	Room #315	RP	Watts	009 M2	0.75	64876		Installed Properly	Treated Boiler
BLDG. 100	WING	100-26E	High - Contaminant	Isolation	Backsiphonage	Women's Gym Restroom #203A	AG			1			Installed Properly	Hand Held Showers (2)
BLDG. 100	WING	100-27E	High - Contaminant	Isolation	Backsiphonage	Restrooms (10)	RRF						Installed Properly	Restroom Fixtures (29)
BLDG. 101	CST	101-1E	High - Contaminant	Isolation	Backsiphonage	Janitor's Closet	AVB			0.5			Installed Properly	Slop Sink
BLDG. 101	CST	101-2E	High - Contaminant	Isolation	Backsiphonage	Vehicle Bay Next to Washing Machine	AG			1			Installed Properly	Ice Machine Condenser Drain
BLDG. 101	CST	101-3E	High - Contaminant	Isolation	Backsiphonage	Vehicle Bay Next to Washing Machine	AVB			0.5			Installed Properly	Slop Sink
BLDG. 101	CST	101-4R	High - Contaminant	Isolation	Backsiphonage	North Bay (This Part of Building Soon to be Demoed)	HBVB			0.75		Install Hose Bibb Vacuum Breaker (ASSE #1011)	Install Required	Hose Bibb
BLDG. 101	CST	101-5E	Low - Pollution	Containment	Both	North bay (This Part of Building Soon to be Demoed)	DCV	Ames	2000 SS	4	2FL1191		Installed Properly	Fire Protection System
BLDG. 101	CST	101-6E	High - Contaminant	Containment	Both	Water Meter in Boiler Room	RP	Watts	909 MOD	2	261999		Installed Properly	Containment Assembly at Water Meter
BLDG. 101	CST	101-7E	High - Contaminant	Isolation	Backsiphonage	Boiler Room	HBVB			0.75			Installed Properly	Hose Bibb
BLDG. 101	CST	101-8E	High - Contaminant	Isolation	Backsiphonage	Restrooms (4)	RRF						Installed Properly	Restroom Fixtures (9)
BLDG. 101	CST	101-9E	High - Contaminant	Isolation	Backsiphonage	West Wall	HBVB			0.75			Installed Properly	Outside Hose Bibb
BLDG. 102	MAIN GATE	102-1E	High - Contaminant	Isolation	Backsiphonage	Restrooms (1)	RRF						Installed Properly	Restroom Fixtures (1)
BLDG. 102	MAIN GATE	102-2E	High - Contaminant	Isolation	Backsiphonage	South Wall	AFHBVB			0.75			Installed Properly	Outside Hose Bibb
BLDG. 105	FUELS	105-1E	High - Contaminant	Isolation	Backsiphonage	By Water Meter	HBVB			0.75			Installed Properly	Hose Bibb
BLDG. 110	FSS/MEDICAL/DFAC	110-1E	High - Contaminant	Isolation	Backsiphonage	West Wall	HBVB			0.75			Installed Properly	Outside Hose Bibb
BLDG. 110	FSS/MEDICAL/DFAC	110-2E	High - Contaminant	Isolation	Backsiphonage	North East Corner	HBVB			0.75			Installed Properly	Outside Hose Bibb
BLDG. 110	FSS/MEDICAL/DFAC	110-3E	High - Contaminant	Isolation	Backsiphonage	South East Corner	HBVB			0.75			Installed Properly	Outside Hose Bibb
BLDG. 110	FSS/MEDICAL/DFAC	110-4E	High - Contaminant	Isolation	Both	Boiler Room	RP	Apollo/Conbraco	40205A2	1	M8103		Installed Properly	Treated Boiler
BLDG. 110	FSS/MEDICAL/DFAC	110-5E	High - Contaminant	Containment	Both	Boiler Room Crawl Space	RP	Watts	9	3	5017		Installed Properly	Containment Assembly at Water Meter
BLDG. 110	FSS/MEDICAL/DFAC	110-6E	High - Contaminant	Isolation	Both	Boiler Room	RP	Watts	009 M2	0.75	32461		Installed Properly	Treated Boiler
BLDG. 110	FSS/MEDICAL/DFAC	110-7E	High - Contaminant	Isolation	Backsiphonage	Boiler Room Behind Air Handling Unit	HBVB			0.75			Installed Properly	Hose Bibb
BLDG. 110	FSS/MEDICAL/DFAC	110-8E	High - Contaminant	Isolation	Backsiphonage	On Wall, Next to Doors in Boiler Room	HBVB			0.75			Installed Properly	Hose Bibb on Wall
BLDG. 110	FSS/MEDICAL/DFAC	110-9E	High - Contaminant	Isolation	Backsiphonage	Perimeter Wall in Kitchen	AVB			0.5			Installed Properly	Garbage Disposal
BLDG. 110	FSS/MEDICAL/DFAC	110-10R	High - Contaminant	Isolation	Backsiphonage	Under Sink in Kitchen Along Perimeter Wall	HBVB			0.75		Install Hose Bibb Vacuum Breaker (ASSE #1011)	Install Required	Hot Water Hose Bibb
BLDG. 110	FSS/MEDICAL/DFAC	110-11R	High - Contaminant	Isolation	Backsiphonage	Under Sink in Kitchen Along Perimeter Wall	HBVB			0.75		Install Hose Bibb Vacuum Breaker (ASSE #1011)	Install Required	Cold Water Hose Bibb

Facility Number	Facility Name	Device Number	Hazard Level	Protection Type	Cross-Connection Type	Location	Device Type	Manufacturer	Model	Size	Serial Number	Recommendation	Equipment Status	Comments
BLDG. 110	FSS/MEDICAL/DFAC	110-12R	Low - Pollution	Isolation	Both	Kitchen	VDCV			0.75		Install Dual Check with Intermediate Vent (ASSE #1012)	Install Required	Supply to Steam Oven
BLDG. 110	FSS/MEDICAL/DFAC	110-13E	High - Contaminant	Isolation	Backsiphonage	Kitchen	AG			1			Installed Properly	Kettle Fills (3)
BLDG. 110	FSS/MEDICAL/DFAC	110-14E	High - Contaminant	Isolation	Backsiphonage	Kitchen	AG			1			Installed Properly	Hand Dish Sprayer
BLDG. 110	FSS/MEDICAL/DFAC	110-15E	High - Contaminant	Isolation	Backsiphonage	Three Compartment Sink in Kitchen	AVB			0.5			Installed Properly	Garbage Disposal
BLDG. 110	FSS/MEDICAL/DFAC	110-16E	High - Contaminant	Isolation	Backsiphonage	Kitchen	AG			1			Installed Properly	Ice Machine Condenser Drain
BLDG. 110	FSS/MEDICAL/DFAC	110-17E	High - Contaminant	Isolation	Backsiphonage	Restrooms (5)	RRF						Installed Properly	Restroom Fixtures (11)
BLDG. 110	FSS/MEDICAL/DFAC	110-18E	High - Contaminant	Isolation	Backsiphonage	Dishwasher Area in Kitchen	AG			1			Installed Properly	Hand Dish Sprayer
BLDG. 110	FSS/MEDICAL/DFAC	110-19E	High - Contaminant	Isolation	Backsiphonage	Dishwasher Area in Kitchen	AVB			0.5			Installed Properly	Garbage Disposal
BLDG. 110	FSS/MEDICAL/DFAC	110-20E	High - Contaminant	Isolation	Backsiphonage	Dishwasher Area in Kitchen	AVB			0.5			Installed Properly	Dishwasher
BLDG. 110	FSS/MEDICAL/DFAC	110-22E	High - Contaminant	Isolation	Backsiphonage	Dishwasher Area in Kitchen	AVB			0.375			Installed Properly	Soap Dispenser for Dishwasher
BLDG. 110	FSS/MEDICAL/DFAC	110-23E	High - Contaminant	Isolation	Backsiphonage	Mess Hall	VMBP			0.375			Installed Properly	Coffee Machine
BLDG. 110	FSS/MEDICAL/DFAC	110-24E	High - Contaminant	Isolation	Backsiphonage	Mess Hall	AG			1			Installed Properly	Ice Machine Condenser Drain
BLDG. 110	FSS/MEDICAL/DFAC	110-25R	High - Contaminant	Isolation	Both	Mess Hall	VMBP			0.375		Install Backflow Preventer for Beverage Dispensing Equipment (ASSE #1022)	Install Required	Supply to Soda Fountain Carbonator (1 of 2)
BLDG. 110	FSS/MEDICAL/DFAC	110-26R	Low - Pollution	Isolation	Both	Mess Hall	VMBP			0.375		Install Backflow Preventer for Beverage Dispensing Equipment (ASSE #1022)	Install Required	Supply to Bloomfield Coffee Maker - or Provide Documentation of Internal Approved Backflow Prevention
BLDG. 110	FSS/MEDICAL/DFAC	110-27R	High - Contaminant	Isolation	Both	Mess Hall	VMBP			0.375		Install Backflow Preventer for Beverage Dispensing Equipment (ASSE #1022)	Install Required	Supply to Soda Fountain Carbonator (2 of 2)
BLDG. 110	FSS/MEDICAL/DFAC	110-28E	High - Contaminant	Isolation	Both	Janitor's Closet #175	AVB			0.5			Install Required	Slop Sink - Supplies Soap Dispenser Through a Valved Wye Connection
BLDG. 110	FSS/MEDICAL/DFAC	110-29E	High - Contaminant	Isolation	Both	Janitor's Closet #175	AG			1			Install Required	Soap Dispensers (2) (ASSE #1055B) - Supplied From Slop Sink Through a Valved Wye Connection
BLDG. 110	FSS/MEDICAL/DFAC	110-30R	High - Contaminant	Isolation	Both	Janitor's Closet	Install					Remove Valved Wye Connection From Hose Threads of Slop Sink and Install Water Wasting Tee	Install Required	Slop Sink - Supplies Soap Dispenser Through a Valved Wye Connection - No Valves Allowed Downstream of Vacuum Breaker ASSE 1001 or ASSE 1011 - Tee Will Supply Valved Wye and Soap Dispenser
BLDG. 110	FSS/MEDICAL/DFAC	110-31E	High - Contaminant	Isolation	Backsiphonage	Men's Locker Room #124	HBVB			0.5			Installed Properly	Hand Held Shower
BLDG. 110	FSS/MEDICAL/DFAC	110-32E	High - Contaminant	Isolation	Backsiphonage	Women's Locker Room #122	HBVB			0.5			Installed Properly	Hand Held Shower
BLDG. 110	FSS/MEDICAL/DFAC	110-33E	High - Contaminant	Isolation	Both	Janitor's Closet #123	AVB			0.5			Install Required	Slop Sink - Supplies Soap Dispenser Through a Valved Wye Connection
BLDG. 110	FSS/MEDICAL/DFAC	110-34E	High - Contaminant	Isolation	Both	Janitor's Closet #123	AG			1			Install Required	Soap Dispenser (ASSE #1055B) - Supplied From Slop Sink Through a Valved Wye Connection
BLDG. 110	FSS/MEDICAL/DFAC	110-35R	High - Contaminant	Isolation	Both	Janitor's Closet #123	Install					Remove Valved Wye Connection From Hose Threads of Slop Sink and Install Water Wasting Tee	Install Required	Slop Sink - Supplies Soap Dispenser Through a Valved Wye Connection - No Valves Allowed Downstream of Vacuum Breaker ASSE 1001 or ASSE 1011 - Tee Will Supply Valved Wye and Soap Dispenser
BLDG. 124	TTF	124-1E	High - Contaminant	Isolation	Both	Janitor's Closet #236	AVB			0.5			Install Required	Slop Sink - Supplies Soap Dispenser Through a Valved Wye Connection

Facility Number	Facility Name	Device Number	Hazard Level	Protection Type	Cross-Connection Type	Location	Device Type	Manufacturer	Model	Size	Serial Number	Recommendation	Equipment Status	Comments
BLDG. 124	TTF	124-2E	High - Contaminant	Isolation	Backsiphonage	Janitor's Closet #236	AG			1			Install Required	Soap Dispenser (ASSE #1055B) - Supplied From Slop Sink Through a Vavled Wye Connection
BLDG. 124	TTF	124-3R	High - Contaminant	Isolation	Both	Janitor's Closet #236	Install					Remove Valved Wye Connection From Hose Threads of Slop Sink and Install Water Wasting Tee	Install Required	Slop Sink - Supplies Soap Dispenser Through a Valved Wye Connection - No Valves Allowed Downstream of Vacuum Breaker ASSE 1001 or ASSE 1011 - Tee Will Supply Valved Wye and Soap Dispenser
BLDG. 124	TTF	124-4E	High - Contaminant	Isolation	Backsiphonage	South East Wall	HBVB			0.75			Installed Properly	Hose Bibb
BLDG. 124	TTF	124-5E	High - Contaminant	Isolation	Backsiphonage	South Wall	HBVB			0.75			Installed Properly	Hose Bibb
BLDG. 124	TTF	124-6E	High - Contaminant	Isolation	Backsiphonage	North Wall	HBVB			0.75			Installed Properly	Hose Bibb
BLDG. 124	TTF	124-7E	High - Contaminant	Containment	Both	Weapon Room	RP	Watts	9	3	5022		Installed Properly	Containment Assembly at Water Meter
BLDG. 124	TTF	124-8E	High - Contaminant	Isolation	Backsiphonage	Weapon Room	AVB			0.5			Installed Properly	Mop Bucket Fill
BLDG. 124	TTF	124-9E	High - Contaminant	Isolation	Backsiphonage	Break Room	AVB			0.5			Installed Properly	Slop Sink
BLDG. 124	TTF	124-10E	High - Contaminant	Isolation	Backsiphonage	Break Room	AVB			0.5			Installed Properly	Mop Bucket Fill
BLDG. 124	TTF	124-11R	High - Contaminant	Isolation	Backsiphonage	Men's Locker Room #130	HBVB			0.75		Install Hose Bibb Vacuum Breaker (ASSE #1011)	Install Required	Hose Bibb in Shower
BLDG. 124	TTF	124-12E	High - Contaminant	Isolation	Backsiphonage	Restrooms (7)	RRF						Installed Properly	Restroom Fixtures (18)
BLDG. 124	TTF	124-13E	High - Contaminant	Isolation	Both	Boiler Room #103	RP	Watts	909-QT	1	582742		Installed Properly	Treated Boiler
BLDG. 124	TTF	124-14E	Low - Pollution	Containment	Both	Pump Room #102	DCV	Watts	757	6	IH5967		Installed Properly	Fire Protection System
BLDG. 125	CIVIL AIR PATROL	125-1E	High - Contaminant	Isolation	Both	Boiler Room #109A	RP	Hersey/Beeco	FRP II	0.75	942175		Installed Properly	Treated Boiler
BLDG. 125	CIVIL AIR PATROL	125-2E	High - Contaminant	Isolation	Backsiphonage	Boiler Room #109A	HBVB			0.75			Installed Properly	Hose Bibb at Wall
BLDG. 125	CIVIL AIR PATROL	125-3R	High - Contaminant	Isolation	Both	Boiler Room #109A	RP			0.75		Install Reduced Pressure Backflow Prevention Assembly (ASSE #1013)	Install Required	Supply to Compressed Air Piping
BLDG. 125	CIVIL AIR PATROL	125-4E	High - Contaminant	Isolation	Backsiphonage	Boiler Room #109A	HBVB			0.75			Installed Properly	Hose Bibb Next to Compressor
BLDG. 125	CIVIL AIR PATROL	125-5E	High - Contaminant	Isolation	Backsiphonage	Boiler Room #109A	HBVB			0.75			Installed Properly	Hose Bibb Next to Compressor
BLDG. 125	CIVIL AIR PATROL	125-6E	High - Contaminant	Containment	Both	Pump Room #101	RP	Watts	009	3	5945		Installed Properly	Containment Assembly at Water Meter
BLDG. 125	CIVIL AIR PATROL	125-7E	High - Contaminant	Containment	Both	Pump Room #101	DCV	Febco	805YD	6	9411041601		Repair/Replace	Fire Protection System - System Contains Foam - Inappropriate Backflow Preventer
BLDG. 125	CIVIL AIR PATROL	125-8R	High - Contaminant	Containment	Both	Pump Room #101	RP	- N/A -	- N/A -	6		Replace Existing Inappropriate DCV (#1015) with RP (ASSE #1013) Due to Foam Fire Protection System	Repair/Replace	Fire Protection System - or Disconnect Chemical Foam Tanks (Tanks are Empty and Not in Use)
BLDG. 125	CIVIL AIR PATROL	125-9E	High - Contaminant	Isolation	Backsiphonage	Hanger Next to Eyewash	HBVB			0.75			Installed Properly	Hose Bibb
BLDG. 125	CIVIL AIR PATROL	125-10E	High - Contaminant	Isolation	Backsiphonage	Hanger Next to Tool Room #102	HBVB			0.75			Installed Properly	Hose Bibb
BLDG. 125	CIVIL AIR PATROL	125-11E	High - Contaminant	Isolation	Backsiphonage	Tool Room #102	AFHBVB			0.75			Installed Properly	Hose Bibb
BLDG. 125	CIVIL AIR PATROL	125-12E	High - Contaminant	Isolation	Backsiphonage	Tool Room #102	AVB			0.5			Installed Properly	Slop Sink
BLDG. 125	CIVIL AIR PATROL	125-13E	High - Contaminant	Isolation	Backsiphonage	Next to Read Room #105A	HBVB			0.75			Installed Properly	Hose Bibb on Wall

Facility Number	Facility Name	Device Number	Hazard Level	Protection Type	Cross-Connection Type	Location	Device Type	Manufacturer	Model	Size	Serial Number	Recommendation	Equipment Status	Comments
BLDG. 125	CIVIL AIR PATROL	125-14E	High - Contaminant	Isolation	Backsiphonage	Tank Repair Room	AVB			0.5			Installed Properly	Slop Sink
BLDG. 125	CIVIL AIR PATROL	125-15E	High - Contaminant	Isolation	Backsiphonage	Tank Repair Room	AFHBVB			0.75			Installed Properly	Hose Bibb
BLDG. 125	CIVIL AIR PATROL	125-16E	High - Contaminant	Isolation	Backsiphonage	Hangar Outside of Tank Repair Room	AFHBVB			0.75			Installed Properly	Hose Bibb on Wall
BLDG. 125	CIVIL AIR PATROL	125-17E	High - Contaminant	Isolation	Backsiphonage	Hangar at Door #100B	AFHBVB			0.75			Installed Properly	Hose Bibb on Wall
BLDG. 125	CIVIL AIR PATROL	125-18E	High - Contaminant	Isolation	Backsiphonage	Men's Locker Room #104C	AG			1			Installed Properly	Hand Held Shower
BLDG. 125	CIVIL AIR PATROL	125-19E	High - Contaminant	Isolation	Backsiphonage	Janitor's Closet #104B	AG			1			Installed Properly	Drain Primer
BLDG. 125	CIVIL AIR PATROL	125-20E	High - Contaminant	Isolation	Both	Janitor's Closet #104B	AVB			0.5			Install Required	Slop Sink - Supplies Soap Dispenser Through a Valved Wye Connection
BLDG. 125	CIVIL AIR PATROL	125-21E	High - Contaminant	Isolation	Both	Janitor's Closet #104B	AG			1			Install Required	Soap Dispenser (ASSE #1055B) - Supplied From Slop Sink Through a Vavled Wye Connection
BLDG. 125	CIVIL AIR PATROL	125-22R	High - Contaminant	Isolation	Both	Janitor's Closet #104B	Install					Remove Valved Wye Connection From Hose Threads of Slop Sink and Install Water Wasting Tee	Install Required	Slop Sink - Supplies Soap Dispenser Through a Valved Wye Connection - No Valves Allowed Downstream of Vacuum Breaker ASSE 1001 or ASSE 1011 - Tee Will Supply Valved Wye and Soap Dispenser
BLDG. 132	BX	132-1E	High - Contaminant	Isolation	Both	Restroom #108	AVB			0.5			Install Required	Slop Sink - Supplies Soap Dispenser Through a Valved Wye Connection
BLDG. 132	BX	132-2E	High - Contaminant	Isolation	Backsiphonage	Restroom #108	AG			1			Install Required	Soap Dispenser (ASSE #1055B) - Supplied From Slop Sink Through a Vavled Wye Connection
BLDG. 132	BX	132-3R	High - Contaminant	Isolation	Both	Restroom #108	Install					Remove Valved Wye Connection From Hose Threads of Slop Sink and Install Water Wasting Tee	Install Required	Slop Sink - Supplies Soap Dispenser Through a Valved Wye Connection - No Valves Allowed Downstream of Vacuum Breaker ASSE 1001 or ASSE 1011 - Tee Will Supply Valved Wye and Soap Dispenser
BLDG. 132	BX	132-4E	High - Contaminant	Containment	Both	Mechanical Room #109	RP	Watts	9	1	12704		Installed Properly	Containment Assembly at Water Meter
BLDG. 132	BX	132-5E	High - Contaminant	Containment	Both	Mechanical Room #109	RP	Watts	9	0.75	64888		Installed Properly	Containment Assembly at Water Meter (device is installed downstream of RP and is not necessary)
BLDG. 132	BX	132-6E	High - Contaminant	Isolation	Backsiphonage	Restrooms (2)	RRF						Installed Properly	Restroom Fixtures (2)
BLDG. 132	BX	132-7R	High - Contaminant	Isolation	Both	Retail Store Restroom	Install					Remove Valved Wye Connection From Hose Threads of Slop Sink and Install Water Wasting Tee	Install Required	Slop Sink - Supplies Soap Dispenser Through a Valved Wye Connection - No Valves Allowed Downstream of Vacuum Breaker ASSE 1001 or ASSE 1011 - Tee Will Supply Valved Wye and Soap Dispenser
BLDG. 132	BX	132-8E	High - Contaminant	Isolation	Both	Retail Store Restroom	AVB			0.5			Install Required	Slop Sink - Supplies Soap Dispenser Through a Valved Wye Connection
BLDG. 132	BX	132-9E	High - Contaminant	Isolation	Backsiphonage	Retail Store Restroom	AG			1			Install Required	Soap Dispenser (ASSE #1055B) - Supplied From Slop Sink Through a Vavled Wye Connection
BLDG. 160	ARMY	160-1E	High - Contaminant	Containment	Both	Pump Room	RP	Watts	009 M2	2	275778		Installed Properly	Containment Assembly at Water Meter
BLDG. 160	ARMY	160-2E	High - Contaminant	Containment	Both	Pump Room	RP	Watts	009 M2	2	275782		Installed Properly	Containment Assembly at Water Meter
BLDG. 160	ARMY	160-3E	Low - Pollution	Containment	Both	Pump Room	DCV	Ames	2000 SS	6	1652190110		Installed Properly	Fire Protection System
BLDG. 160	ARMY	160-E4	High - Contaminant	Isolation	Backsiphonage	Mechanical Room #123	HBVB			0.75			Installed Properly	Hose Bibb
BLDG. 160	ARMY	160-5E	High - Contaminant	Isolation	Both	Boiler Room #104	RP	Watts	909 MOD	0.75	333864		Installed Properly	Treated Boiler
BLDG. 160	ARMY	160-6E	High - Contaminant	Isolation	Backsiphonage	Room #112	AFHBVB			0.75			Installed Properly	Hose Bibb
BLDG. 160	ARMY	160-7E	High - Contaminant	Isolation	Both	Janitor's Closet #128	AVB			0.5			Install Required	Slop Sink - Supplies Soap Dispenser Through a Valved Wye Connection

Facility Number	Facility Name	Device Number	Hazard Level	Protection Type	Cross-Connection Type	Location	Device Type	Manufacturer	Model	Size	Serial Number	Recommendation	Equipment Status	Comments
BLDG. 160	ARMY	160-8E	High - Contaminant	Isolation	Backsiphonage	Janitor's Closet #128	AG			1			Install Required	Soap Dispenser (ASSE #1055B) - Supplied From Slop Sink Through a Vavled Wye Connection
BLDG. 160	ARMY	160-9R	High - Contaminant	Isolation	Both	Janitor's Closet #128	Install					Remove Valved Wye Connection From Hose Threads of Slop Sink and Install Water Wasting Tee	Install Required	Slop Sink - Supplies Soap Dispenser Through a Valved Wye Connection - No Valves Allowed Downstream of Vacuum Breaker ASSE 1001 or ASSE 1011 - Tee Will Supply Valved Wye and Soap Dispenser
BLDG. 160	ARMY	160-10E	High - Contaminant	Isolation	Backsiphonage	Janitor's Closet #134	AVB			0.5			Installed Properly	Slop Sink
BLDG. 160	ARMY	160-11E	High - Contaminant	Isolation	Backsiphonage	Restrooms (5)	RRF						Installed Properly	Restroom Fixtures (13)
BLDG. 160	ARMY	160-12E	High - Contaminant	Isolation	Backsiphonage	East Wall	HBVB			0.75			Installed Properly	Outside Hose Bibb
BLDG. 160	ARMY	160-13E	High - Contaminant	Isolation	Backsiphonage	South Wall	HBVB			0.75			Installed Properly	Outside Hose Bibb
BLDG. 160	ARMY	160-14E	High - Contaminant	Isolation	Backsiphonage	South Wall	HBVB			0.75			Installed Properly	Outside Hose Bibb
BLDG. 160	ARMY	160-15R	High - Contaminant	Isolation	Backsiphonage	East Wall	AFHBVB			0.75		Install Anti-Frost Hose Bibb Vacuum Breaker (ASSE #1011, Watts NF8 or Equal)	Install Required	Outside Hose Bibb
BLDG. 160	ARMY	160-16E	High - Contaminant	Isolation	Backsiphonage	Mechanical Room #107	AG			1			Installed Properly	Liebert Humidifier Drain
BLDG. 180	DTOC	180-1E	High - Contaminant	Isolation	Both	Janitor's Room #164	AVB			0.5			Install Required	Slop Sink - Supplies Soap Dispenser Through a Valved Wye Connection
BLDG. 180	DTOC	180-2E	High - Contaminant	Isolation	Backsiphonage	Janitor's Room #164	AG			1			Install Required	Soap Dispenser (ASSE #1055B) - Supplied From Slop Sink Through a Vavled Wye Connection
BLDG. 180	DTOC	180-3R	High - Contaminant	Isolation	Both	Janitor's Room #164	Install					Remove Valved Wye Connection From Hose Threads of Slop Sink and Install Water Wasting Tee	Install Required	Slop Sink - Supplies Soap Dispenser Through a Valved Wye Connection - No Valves Allowed Downstream of Vacuum Breaker ASSE 1001 or ASSE 1011 - Tee Will Supply Valved Wye and Soap Dispenser
BLDG. 180	DTOC	180-4E	High - Contaminant	Isolation	Both	Janitor's Closet Across From Vending/Break Room	AVB			0.5			Install Required	Slop Sink - Supplies Soap Dispenser Through a Valved Wye Connection
BLDG. 180	DTOC	180-5E	High - Contaminant	Isolation	Backsiphonage	Janitor's Closet Across From Vending/Break Room	AG			1			Install Required	Soap Dispenser (ASSE #1055B) - Supplied From Slop Sink Through a Vavled Wye Connection
BLDG. 180	DTOC	180-6R	High - Contaminant	Isolation	Both	Janitor's Closet Across From Vending/Break Room	Install					Remove Valved Wye Connection From Hose Threads of Slop Sink and Install Water Wasting Tee	Install Required	Slop Sink - Supplies Soap Dispenser Through a Valved Wye Connection - No Valves Allowed Downstream of Vacuum Breaker ASSE 1001 or ASSE 1011 - Tee Will Supply Valved Wye and Soap Dispenser
BLDG. 180	DTOC	180-7E	High - Contaminant	Isolation	Backsiphonage	Restrooms (4)	RRF						Installed Properly	Restroom Fixtures (13)
BLDG. 180	DTOC	180-8E	High - Contaminant	Containment	Both	Mechanical Room #108	RP	Watts	009 M2	2	281920		Installed Properly	Containment Assembly at Water Meter
BLDG. 180	DTOC	180-9E	High - Contaminant	Containment	Both	Mechanical Room #108	RP	Watts	009 M2	2	281928		Installed Properly	Containment Assembly at Water Meter
BLDG. 180	DTOC	180-10E	High - Contaminant	Isolation	Backsiphonage	Mechanical Room #108	HBVB			0.75			Installed Properly	Hot Hose Bibb at Water Meter
BLDG. 180	DTOC	180-11E	High - Contaminant	Isolation	Backsiphonage	Mechanical Room #108	HBVB			0.75			Installed Properly	Cold Water Hose Bibb at Water Meter
BLDG. 180	DTOC	180-12E	High - Contaminant	Isolation	Backsiphonage	North Wall	HBVB			0.75			Installed Properly	Outside Hose Bibb
BLDG. 180	DTOC	180-13E	High - Contaminant	Isolation	Backsiphonage	South Wall	HBVB			0.75			Installed Properly	Outside Hose Bibb
BLDG. 180	DTOC	180-14E	High - Contaminant	Isolation	Backsiphonage	West Wall	HBVB			0.75			Installed Properly	Outside Hose Bibb
BLDG. 180	DTOC	180-15E	Low - Pollution	Isolation	Both	Boiler Room #109	RP	Watts	9	0.5	310834		Installed Properly	Untreated Boiler

Facility Number	Facility Name	Device Number	Hazard Level	Protection Type	Cross-Connection Type	Location	Device Type	Manufacturer	Model	Size	Serial Number	Recommendation	Equipment Status	Comments
BLDG. 180	DTOC	180-16E	High - Contaminant	Isolation	Backsiphonage	Boiler Room #109	HBVB			0.75			Installed Properly	Hot Water Hose Bibb
BLDG. 180	DTOC	180-17E	High - Contaminant	Isolation	Backsiphonage	Boiler Room #109	HBVB			0.75			Installed Properly	Cold Water Hose Bibb
BLDG. 180	DTOC	180-18E	High - Contaminant	Isolation	Both	Mechanical Room #114	RP	Apollo/Conbraco	40204A2	0.75	L5126		Installed Properly	Chilled Water Make-Up
BLDG. 180	DTOC	180-19R	Low - Pollution	Isolation	Both	Mechanical Room #114	Label					Label Piping Downstream of RP as "Non-Potable Water"	Other	Piping Downstream of Existing RP is Mislabeled as Domestic Cold Water" in Multiple Places
BLDG. 180	DTOC	180-20E	High - Contaminant	Isolation	Backsiphonage	Mechanical Room #114	HBVB			0.75			Installed Properly	Hose Bibb
BLDG. 180	DTOC	180-21E	High - Contaminant	Isolation	Backsiphonage	Mechanical Room #114	HBVB			0.75			Installed Properly	Hose Bibb
BLDG. 180	DTOC	180-22E	Low - Pollution	Containment	Both	Pump Room #125	RP	Ames	4000 SS	4	4CJ0017		Installed Properly	Fire Protection System
BLDG. 180	DTOC	180-23E	High - Contaminant	Isolation	Both	Pump Room #125	RP	Apollo/Conbraco	40205T2	1	01401T		Installed Properly	Chemical Tank Make-Up
BLDG. 231	CHAPEL	231-1E	High - Contaminant	Isolation	Both	Janitor's Closet #115	AVB			0.5			Install Required	Slop Sink - Supplies Soap Dispenser Through a Valved Wye Connection
BLDG. 231	CHAPEL	231-2E	High - Contaminant	Isolation	Both	Janitor's Closet #115	AG			1			Install Required	Soap Dispenser (ASSE #1055B) - Supplied From Slop Sink Through a Vavled Wye Connection
BLDG. 231	CHAPEL	231-3R	High - Contaminant	Isolation	Both	Janitor's Closet #115	Install					Remove Valved Wye Connection From Hose Threads of Slop Sink and Install Water Wasting Tee	Install Required	Slop Sink - Supplies Soap Dispenser Through a Valved Wye Connection - No Valves Allowed Downstream of Vacuum Breaker ASSE 1001 or ASSE 1011 - Tee Will Supply Valved Wye and Soap Dispenser
BLDG. 231	CHAPEL	231-4E	High - Contaminant	Isolation	Backsiphonage	Restrooms (2)	RRF						Installed Properly	Restroom Fixtures (5)
BLDG. 240	COMM	240-1E	Low - Pollution	Containment	Both	Outside Pump House	DCV	Ames	colt-200	6	LG0862		Installed Properly	Fire Protection System
BLDG. 240	COMM	240-2E	Low - Pollution	Containment	Both	Boiler Room	DCV	Watts	757	6			Installed Properly	Fire Protection System (Redundant, Not Needed)
BLDG. 240	COMM	240-3E	High - Contaminant	Containment	Both	Boiler Room	RP	Watts	9	2.5	32701		Installed Properly	Containment Assembly at Water Meter
BLDG. 240	COMM	240-4E	High - Contaminant	Isolation	Both	Boiler Room	RP	Apollo	RP40	0.75	225170		Installed Properly	Treated Boiler
BLDG. 240	COMM	240-5E	High - Contaminant	Isolation	Backsiphonage	Boiler Room	AG			1.5			Installed Properly	Humidifier Drain
BLDG. 240	COMM	240-6E	High - Contaminant	Isolation	Both	1st floor Janitor's Closet	AVB			0.5			Install Required	Slop Sink - Supplies Soap Dispenser Through a Valved Wye Connection
BLDG. 240	COMM	240-7E	High - Contaminant	Isolation	Both	1st floor Janitor's Closet	AG			1			Install Required	Soap Dispenser (ASSE #1055B) - Supplied From Slop Sink Through a Valved Wye Connection
BLDG. 240	COMM	s	High - Contaminant	Isolation	Both	1st floor Janitor's Closet	Install					Remove Valved Wye Connection From Hose Threads of Slop Sink and Install Water Wasting Tee	Install Required	Slop Sink - Supplies Soap Dispenser Through a Valved Wye Connection - No Valves Allowed Downstream of Vacuum Breaker ASSE 1001 or ASSE 1011 - Tee Will Supply Valved Wye and Soap Dispenser
BLDG. 240	COMM	240-9E	High - Contaminant	Isolation	Backsiphonage	Men's Locker Room	AG			1			Installed Properly	Hand Held Showers (2)
BLDG. 240	COMM	240-10E	High - Contaminant	Isolation	Backsiphonage	Women's Locker Room	AG			1			Installed Properly	Hand Held Shower (1)
BLDG. 240	COMM	240-11E	High - Contaminant	Isolation	Both	2nd floor Janitor's Closet	AVB			0.5			Install Required	Slop Sink - Supplies Soap Dispenser Through a Valved Wye Connection
BLDG. 240	COMM	240-12E	High - Contaminant	Isolation	Both	2nd floor Janitor's Closet	AG			1			Install Required	Soap Dispenser (ASSE #1055B) - Supplied From Slop Sink Through a Vavled Wye Connection
BLDG. 240	COMM	240-13R	High - Contaminant	Isolation	Both	2nd floor Janitor's Closet	Install					Remove Valved Wye Connection From Hose Threads of Slop Sink and Install Water Wasting Tee	Install Required	Slop Sink - Supplies Soap Dispenser Through a Valved Wye Connection - No Valves Allowed Downstream of Vacuum Breaker ASSE 1001 or ASSE 1011 - Tee Will Supply Valved Wye and Soap Dispenser

Facility Number	Facility Name	Device Number	Hazard Level	Protection Type	Cross-Connection Type	Location	Device Type	Manufacturer	Model	Size	Serial Number	Recommendation	Equipment Status	Comments
BLDG. 240	COMM	240-14E	High - Contaminant	Isolation	Backsiphonage	Restrooms (3)	RRF						Installed Properly	Restroom Fixtures (6)
BLDG. 240	COMM	240-15E	High - Contaminant	Isolation	Backsiphonage	North Wall	AFHBVB			0.75			Installed Properly	Outside Hose Bibbs
BLDG. 240	COMM	240-16E	High - Contaminant	Isolation	Backsiphonage	South Wall	AFHBVB			0.75			Installed Properly	Outside Hose Bibbs
BLDG. 300	SECURITY	300-1E	High - Contaminant	Containment	Both	Pump Room	RP	Watts	009 M2 QT	2	135516		Installed Properly	Containment Assembly at Water Meter
BLDG. 300	SECURITY	300-2E	Low - Pollution	Containment	Both	Pump Room	DCV	Ames	COLT200	6	LB0930		Installed Properly	Fire Protection System
BLDG. 300	SECURITY	300-3E	High - Contaminant	Isolation	Backsiphonage	West Wall	HBVB			0.75			Installed Properly	Outside Hose Bibb
BLDG. 300	SECURITY	300-4E	High - Contaminant	Isolation	Backsiphonage	East Wall	HBVB			0.75			Installed Properly	Outside Hose Bibb
BLDG. 300	SECURITY	300-5E	High - Contaminant	Isolation	Backsiphonage	East Wall	HBVB			0.75			Installed Properly	Outside Hose Bibb
BLDG. 300	SECURITY	300-6E	High - Contaminant	Isolation	Both	Janitor's Closet #151	AVB			0.5			Install Required	Slop Sink - Supplies Soap Dispenser Through a Valved Wye Connection
BLDG. 300	SECURITY	300-7E	High - Contaminant	Isolation	Backsiphonage	Janitor's Closet #151	AG			1			Install Required	Soap Dispenser (ASSE #1055B) - Supplied From Slop Sink Through a Valved Wye Connection
BLDG. 300	SECURITY	300-8R	High - Contaminant	Isolation	Both	Janitor's Closet #151	Install					Remove Valved Wye Connection From Hose Threads of Slop Sink and Install Water Wasting Tee	Install Required	Slop Sink - Supplies Soap Dispenser Through a Valved Wye Connection - No Valves Allowed Downstream of Vacuum Breaker ASSE 1001 or ASSE 1011 - Tee Will Supply Valved Wye and Soap Dispenser
BLDG. 300	SECURITY	300-9E	High - Contaminant	Isolation	Backsiphonage	Janitor's Closet #151	DuC			1			Installed Properly	Hand Held Eyewash
BLDG. 300	SECURITY	300-10E	High - Contaminant	Isolation	Backsiphonage	Men's Locker Room #129	HHS			0.5			Installed Properly	Hand Held Showers (3)
BLDG. 300	SECURITY	300-11E	High - Contaminant	Isolation	Backsiphonage	Women's Locker Room #134	HHS			0.5			Installed Properly	Hand Held Shower (2)
BLDG. 300	SECURITY	300-12E	Low - Pollution	Isolation	Backsiphonage	Hallway Across From Classroom #113	AG			1			Installed Properly	Coffee Pot
BLDG. 300	SECURITY	300-13E	High - Contaminant	Isolation	Both	Men's Restroom Janitor's Closet #133	AVB			0.5			Install Required	Slop Sink - Supplies Soap Dispenser Through a Valved Wye Connection
BLDG. 300	SECURITY	300-14E	High - Contaminant	Isolation	Backsiphonage	Men's Restroom Janitor's Closet #133	AG			1			Install Required	Soap Dispenser (ASSE #1055B) - Supplied From Slop Sink Through a Valved Wye Connection
BLDG. 300	SECURITY	300-15R	High - Contaminant	Isolation	Both	Men's Restroom Janitor's Closet #133	Install					Remove Valved Wye Connection From Hose Threads of Slop Sink and Install Water Wasting Tee	Install Required	Slop Sink - Supplies Soap Dispenser Through a Valved Wye Connection - No Valves Allowed Downstream of Vacuum Breaker ASSE 1001 or ASSE 1011 - Tee Will Supply Valved Wye and Soap Dispenser
BLDG. 300	SECURITY	300-16E	High - Contaminant	Isolation	Backsiphonage	Men's Restroom Janitor's Closet #133	DuC			1			Installed Properly	Hand Held Eyewash
BLDG. 300	SECURITY	300-17E	High - Contaminant	Isolation	Backsiphonage	Restrooms (6)	RRF						Installed Properly	Restroom Fixtures (11)
BLDG. 314	ALERT HANGER	314-1R	High - Contaminant	Isolation	Backsiphonage	Next to Eyewash	HBVB			0.75		Install Hose Bibb Vacuum Breaker (ASSE #1011)	Install Required	Each Side of Valved Wye Splitter on Hose Bibb - or Permanently Remove Valved Wye Splitter and Install Hose Bibb Vacuum Breaker (ASSE #1011) on Hose Bibb
BLDG. 315	ALERT HANGAR	315-1E	High - Contaminant	Containment	Both	Mechanical Room	RP	Watts	009	2	77990		Installed Properly	Containment Assembly at Water Meter
BLDG. 315	ALERT HANGAR	315-2R	High - Contaminant	Isolation	Backsiphonage	Mechanical Room	HBVB			0.75		Install Hose Bibb Vacuum Breaker (ASSE #1011)	Install Required	Hose Bibb at Water Meter
BLDG. 315	ALERT HANGAR	315-3E	High - Contaminant	Isolation	Both	Janitor's Closet #105	AVB			0.5			Install Required	Slop Sink - Supplies Soap Dispenser Through a Valved Wye Connection
BLDG. 315	ALERT HANGAR	315-4E	High - Contaminant	Isolation	Both	Janitor's Closet #105	AG			1			Install Required	Soap Dispenser (ASSE #1055B) - Supplied From Slop Sink Through a Valved Wye Connection

Facility Number	Facility Name	Device Number	Hazard Level	Protection Type	Cross-Connection Type	Location	Device Type	Manufacturer	Model	Size	Serial Number	Recommendation	Equipment Status	Comments
BLDG. 315	ALERT HANGAR	315-5R	High - Contaminant	Isolation	Both	Janitor's Closet #105	Install					Remove Valved WYE Connection From Hose Threads of Slop Sink and Install Water Wasting Tee	Install Required	Slop Sink - Supplies Soap Dispenser Through a Valved Wye Connection - No Valves Allowed Downstream of Vacuum Breaker ASSE 1001 or ASSE 1011 - Tee Will Supply Valved Wye and Soap Dispenser
BLDG. 315	ALERT HANGAR	315-6E	High - Contaminant	Isolation	Backsiphonage	Outside of Room #109	HBVB			0.75			Installed Properly	Hose Bibb in Hangar Outside Room
BLDG. 315	ALERT HANGAR	316-7R	High - Contaminant	Isolation	Backsiphonage	Hangar Outside of Room 109	AVB			0.5		Install Atmospheric Vacuum Breaker (ASSE #1001)	Install Required	Supply to Drain Flush - NOTE: Critical Level of Atmospheric Vacuum Breaker Must be Installed at Least 6" Above all Downstream Piping with NO Valves Downstream.
BLDG. 315	ALERT HANGAR	315-8E	High - Contaminant	Isolation	Backsiphonage	Room #109	HBVB			0.75			Installed Properly	Hose Bibb
BLDG. 315	ALERT HANGAR	315-9E	High - Contaminant	Isolation	Backsiphonage	South West Hangar Wall	HBVB			0.75			Installed Properly	Hose Bibb
BLDG. 315	ALERT HANGAR	315-10E	High - Contaminant	Isolation	Backsiphonage	South West Wall in Hangar	PFD			0.375			Installed Properly	PFD in Supply to Drain Purge
BLDG. 315	ALERT HANGAR	315-11E	High - Contaminant	Isolation	Backsiphonage	North Wall of Hangar	AVB			2			Repair/Replace	Fire Hose Connection - Inappropriate Backflow Preventer
BLDG. 315	ALERT HANGAR	315-12E	High - Contaminant	Isolation	Backsiphonage	South Wall of Hangar	AVB			2			Repair/Replace	Fire Hose Connection - Inappropriate Backflow Preventer
BLDG. 315	ALERT HANGAR	315-13R	High - Contaminant	Isolation	Backsiphonage	North Wall of Hangar	RP			2		Install Reduced Pressure Backflow Prevention Assembly (ASSE #1013)	Install Required	Supply to Fire Hose Connection - Replaces Inappropriate Existing Atmospheric Vacuum Breaker
BLDG. 315	ALERT HANGAR	315-14R	High - Contaminant	Isolation	Backsiphonage	South Wall of Hangar	RP			2		Install Reduced Pressure Backflow Prevention Assembly (ASSE #1013)	Install Required	Supply to Fire Hose Connection - Replaces Inappropriate Existing Atmospheric Vacuum Breaker
BLDG. 315	ALERT HANGAR	315-15E	High - Contaminant	Isolation	Backsiphonage	Restrooms (2) By Water Meter in Boiler Room	RRF						Installed Properly	Restroom Fixtures (3)
BLDG. 316	HEATING PLANT &	316-1E	High - Contaminant	Containment	Both	Boiler Room	RP	Watts	9	2	72560		Installed Properly	Containment Assembly
BLDG. 316	HEATING PLANT &	316-2E	High - Contaminant	Isolation	Backsiphonage	Boiler Room	AVB			0.5			Installed Properly	Slop Sink
BLDG. 316	HEATING PLANT &	316-3E	High - Contaminant	Isolation	Both	Boiler Room	RP	Apollo/Conbraco	40204A2	0.75	L5118		Installed Properly	Treated Boiler
BLDG. 316	HEATING PLANT &	316-4R	High - Contaminant	Isolation	Backsiphonage	North East Corner of Boiler Room	HBVB			0.75		Install Hose Bibb Vacuum Breaker (ASSE #1011)	Install Required	Hose Bibb at North East Corner of Boiler Room
BLDG. 316	HEATING PLANT &	316-5E	High - Contaminant	Isolation	Backsiphonage	North East Corner of Boiler Building #316	AFHBVB			0.75			Installed Properly	Outside Hose Bibb
BLDG. 316	HEATING PLANT &	316-6E	High - Contaminant	Isolation	Backsiphonage	North East Walls of Bldg. #316B	HBIVB			0.75			Installed Properly	Outside Hose Bibb (with AFHBVB)
BLDG. 316	HEATING PLANT &	316-7E	High - Contaminant	Isolation	Backsiphonage	South West Walls of Bldg. #316B	HBIVB			0.75			Installed Properly	Outside Hose Bibb (with AFHBVB)
BLDG. 316	HEATING PLANT &	316-8E	High - Contaminant	Isolation	Backsiphonage	North East Wall of Bldg. #316A	HBIVB			0.75			Installed Properly	Outside Hose Bibbs (with AFHBVB)
BLDG. 316	HEATING PLANT &	316-9E	High - Contaminant	Isolation	Backsiphonage	South West Wall of Bldg. #316A	HBIVB			0.75			Install Required	Outside Hose Bibbs (with AFHBVB)
BLDG. 316	HEATING PLANT &	316-10R	Low - Pollution	Isolation	Backsiphonage	Trailer #316B	VMBP			0.375		Install Backflow Preventer for Beverage Dispensing Equipment (ASSE #1022)	Install Required	Supply to Coffee Pot - or Provide Documentation of Internal Approved Backflow Prevention
BLDG. 316	HEATING PLANT &	316-11E	High - Contaminant	Isolation	Backsiphonage	Restrooms (3) in Trailer #316B	RRF						Installed Properly	Restroom Fixtures (3)
BLDG. 316	HEATING PLANT &	316-12E	High - Contaminant	Isolation	Backsiphonage	Restrooms (3)	RRF						Installed Properly	Restroom Fixtures (3)
BLDG. 319	PUMP HOUSE	319-1E	Low - Pollution	Containment	Both	Fire Protection System	DCV	Ames	2000 SE	8	2EL0784		Installed Properly	Fire Protection System
BLDG. 320	MUNITIONS ADMIN	320-1E	High - Contaminant	Isolation	Both	Boiler Room	RP	Watts	909MOD	0.75	23719		Installed Properly	Treated Boiler

Facility Number	Facility Name	Device Number	Hazard Level	Protection Type	Cross-Connection Type	Location	Device Type	Manufacturer	Model	Size	Serial Number	Recommendation	Equipment Status	Comments
BLDG. 320	MUNITIONS ADMIN	320-2E	High - Contaminant	Containment	Both	Furnace Room	RP	Watts	9	1.5	72718		Installed Properly	Containment Assembly
BLDG. 320	MUNITIONS ADMIN	320-3E	High - Contaminant	Isolation	Backsiphonage	North Wall	HBVB			0.75			Installed Properly	Outside Hose Bibb
BLDG. 320	MUNITIONS ADMIN	320-4E	High - Contaminant	Isolation	Backsiphonage	South Wall	HBVB			0.75			Installed Properly	Outside Hose Bibb
BLDG. 320	MUNITIONS ADMIN	320-5E	High - Contaminant	Isolation	Backsiphonage	South Wall	HBVB			0.75			Installed Properly	Outside Hose Bibb - South Wall
BLDG. 320	MUNITIONS ADMIN	320-6E	High - Contaminant	Isolation	Backsiphonage	Power Washer in Drive Thru Maintenance Area	HBVB			0.75			Install Required	Hose Bibb Supplying Power Washer - Inappropriate Backflow Preventer
BLDG. 320	MUNITIONS ADMIN	320-7R	High - Contaminant	Isolation	Both	Drive Thru Maintenance Area	RP			0.75		Install Reduced Pressure Backflow Prevention Assembly (ASSE #1013)	Install Required	Supply to Hose Bibb Supplying Power Washer
BLDG. 320	MUNITIONS ADMIN	320-8E	High - Contaminant	Isolation	Backsiphonage	Restrooms (2)	RRF						Installed Properly	Restroom Fixtures (5)
BLDG. 320	MUNITIONS ADMIN	320-9E	High - Contaminant	Isolation	Both	Janitor's Closet	AVB			0.5			Install Required	Slop Sink - Supplies Soap Dispenser Through a Valved Wye Connection
BLDG. 320	MUNITIONS ADMIN	320-10E	High - Contaminant	Isolation	Both	Janitor's Closet	AG			1			Install Required	Soap Dispenser (ASSE #1055B) - Supplied From Slop Sink Through a Vavled Wye Connection
BLDG. 320	MUNITIONS ADMIN	320-11R	High - Contaminant	Isolation	Both	Janitor's Closet	Install					Remove Valved Wye Connection From Hose Threads of Slop Sink and Install Water Wasting Tee	Install Required	Slop Sink - Supplies Soap Dispenser Through a Valved Wye Connection - No Valves Allowed Downstream of Vacuum Breaker ASSE 1001 or ASSE 1011 - Tee Will Supply Valved Wye and Soap Dispenser
BLDG. 322	MUNITIONS	322-1E	High - Contaminant	Isolation	Backsiphonage	Restrooms (1)	RRF						Installed Properly	Restroom Fixtures (1)
BLDG. 322	MUNITIONS	322-2E	High - Contaminant	Isolation	Both	Boiler Room #303	RP	Apollo/Conbraco	40204A2	0.75	Y7518		Installed Properly	Treated Boiler
BLDG. 410	CE	410-1E	High - Contaminant	Containment	Both	Garage	RP	Watts	909MOD	3	163136		Installed Properly	Containment Assembly at Water Meter
BLDG. 410	CE	410-2E	High - Contaminant	Isolation	Backsiphonage	Men's Locker Room #113	AG			1			Installed Properly	Hand Held Shower
BLDG. 410	CE	410-3E	High - Contaminant	Isolation	Backsiphonage	Women's Locker Room #111	AG			1			Installed Properly	Hand Held Shower
BLDG. 410	CE	410-4E	High - Contaminant	Isolation	Backsiphonage	Break Room #110	AG			1			Installed Properly	Ice Machine Condenser Drain
BLDG. 410	CE	410-5R	High - Contaminant	Isolation	Both	Break Room #110	VMBP			0.375		Install Backflow Preventer for Beverage Dispensing Equipment (ASSE #1022)	Install Required	Coffee Pot - or Provide Documentation of Proper Internal Backflow Prevention
BLDG. 410	CE	410-6E	High - Contaminant	Isolation	Both	Janitor's Closet #108	AVB			0.5		Remove Valved Wye Connection From Hose Threads of Slop Sink and Install Water Wasting Tee	Install Required	Slop Sink - Supplies Soap Dispenser Through a Valved Wye Connection - No Valves Allowed Downstream of Vacuum Breaker ASSE 1001 or ASSE 1011 - Tee Will Supply Valved Wye and Soap Dispenser
BLDG. 410	CE	410-7E	High - Contaminant	Isolation	Both	Janitor's Closet #108	AG			1			Install Required	Soap Dispenser (ASSE #1055B) - Supplied From Slop Sink Through a Vavled Wye Connection
BLDG. 410	CE	410-8R	High - Contaminant	Isolation	Both	Janitor's Closet #108	Install					Remove Valved Wye Connection From Hose Threads of Slop Sink and Install Water Wasting Tee	Install Required	Slop Sink - Supplies Soap Dispenser Through a Valved Wye Connection - No Valves Allowed Downstream of Vacuum Breaker ASSE 1001 or ASSE 1011 - Tee Will Supply Valved Wye and Soap Dispenser
BLDG. 410	CE	410-9R	High - Contaminant	Isolation	Backsiphonage	Garage	HBVB			0.75		Install Hose Bibb Vacuum Breaker (ASSE #1011)	Install Required	Hose Bibb at Water Meter
BLDG. 410	CE	410-10R	High - Contaminant	Isolation	Backsiphonage	Garage	HBVB			0.75		Install Hose Bibb Vacuum Breaker (ASSE #1011)	Install Required	Hose Bibb at Water Meter
BLDG. 410	CE	410-11E	High - Contaminant	Isolation	Backsiphonage	Outside Hose Bibb	AFHBVB			0.75			Installed Properly	
BLDG. 410	CE	410-12E	High - Contaminant	Isolation	Backsiphonage	Garage	HBVB			0.75			Installed Properly	Hose Bibb Under Sink

Facility Number	Facility Name	Device Number	Hazard Level	Protection Type	Cross-Connection Type	Location	Device Type	Manufacturer	Model	Size	Serial Number	Recommendation	Equipment Status	Comments
BLDG. 410	CE	410-13E	High - Contaminant	Isolation	Backsiphonage	Restrooms (6)	RRF						Installed Properly	Restroom Fixtures (16)
BLDG. 410	CE	410-14E	Low - Pollution	Containment	Both	Paint Room #127	DCV	Watts	709	8			Installed Properly	Fire Protection System
BLDG. 430	RPA/ISRG	430-1E	Low - Pollution	Containment	Both	Pump Room	RP	Watts	909 M1	8	625092		Installed Properly	Fire Protection System
BLDG. 430	RPA/ISRG	430-2E	High - Contaminant	Containment	Both	Mechanical Room #1902	RP	Watts	957	3	OK0462		Installed Properly	Containment Assembly at Water Meter
BLDG. 430	RPA/ISRG	430-3E	High - Contaminant	Isolation	Both	Mechanical Room #1902	RP	Watts	LF009M3QT	0.75	61648		Installed Properly	Glycol Tank Make-Up for Cooling Tower
BLDG. 430	RPA/ISRG	430-4E	High - Contaminant	Isolation	Both	Mechanical Room #1092	RP	Watts	LF009M2QT	1.5	33161		Installed Properly	Cooling Tower Make-Up
BLDG. 430	RPA/ISRG	430-5E	High - Contaminant	Isolation	Backsiphonage	Mechanical Room #1092	RP	Watts	LF009M2	0.5	94538		Installed Properly	Humidifier Make-Up
BLDG. 430	RPA/ISRG	430-6E	High - Contaminant	Isolation	Backsiphonage	Restrooms (7)	RRF						Installed Properly	Restroom Fixtures (23)
BLDG. 430	RPA/ISRG	430-7E	High - Contaminant	Isolation	Backsiphonage	Women's Locker Room #1003	HBVB			0.5			Installed Properly	Hand Held Shower
BLDG. 430	RPA/ISRG	430-8E	High - Contaminant	Isolation	Backsiphonage	Men's Locker Room #1005	HBVB			0.5			Installed Properly	Hand Held Shower
BLDG. 430	RPA/ISRG	430-9E	High - Contaminant	Isolation	Backsiphonage	Hawks Nest "Room #1050"	AG			1			Installed Properly	Ice Machine Condenser Drain
BLDG. 430	RPA/ISRG	430-10E	High - Contaminant	Isolation	Both	Janitor's Closet #1032	AVB			0.5			Install Required	Slop Sink - Supplies Soap Dispenser Through a Valved Wye Connection
BLDG. 430	RPA/ISRG	430-11E	High - Contaminant	Isolation	Both	Janitor's Closet #1032	AG			1			Install Required	Soap Dispenser (ASSE #1055B) - Supplied From Slop Sink Through a Vavled Wye Connection
BLDG. 430	RPA/ISRG	430-12R	High - Contaminant	Isolation	Both	Janitor's Closet #1032	Install					Remove Valved Wye Connection From Hose Threads of Slop Sink and Install Water Wasting Tee	Install Required	Slop Sink - Supplies Soap Dispenser Through a Valved Wye Connection - No Valves Allowed Downstream of Vacuum Breaker ASSE 1001 or ASSE 1011 - Tee Will Supply Valved Wye and Soap Dispenser
BLDG. 430	RPA/ISRG	430-13E	High - Contaminant	Isolation	Backsiphonage	Men's 2nd Floor Locker Room #2005	HBVB			0.5			Installed Properly	Hand Held Shower
BLDG. 430	RPA/ISRG	430-14E	High - Contaminant	Isolation	Both	Janitor's Closet #2002	AVB			0.5			Install Required	Slop Sink - Supplies Soap Dispenser Through a Valved Wye Connection
BLDG. 430	RPA/ISRG	430-15E	High - Contaminant	Isolation	Backsiphonage	Janitor's Closet #2002	AG			1			Install Required	Soap Dispenser (ASSE #1055B) - Supplied From Slop Sink Through a Vavled Wye Connection
BLDG. 430	RPA/ISRG	430-16R	High - Contaminant	Isolation	Both	Janitor's Closet #2002	Install					Remove Valved Wye Connection From Hose Threads of Slop Sink and Install Water Wasting Tee	Install Required	Slop Sink - Supplies Soap Dispenser Through a Valved Wye Connection - No Valves Allowed Downstream of Vacuum Breaker ASSE 1001 or ASSE 1011 - Tee Will Supply Valved Wye and Soap Dispenser
BLDG. 430	RPA/ISRG	430-17E	High - Contaminant	Isolation	Backsiphonage	North Wall	HBVB			0.75			Installed Properly	Outside Hose Bibb
BLDG. 430	RPA/ISRG	430-19E	High - Contaminant	Isolation	Backsiphonage	East Wall	HBVB			0.75			Installed Properly	Outside Hose Bibb
BLDG. 430	RPA/ISRG	430-20E	High - Contaminant	Isolation	Backsiphonage	East Wall	HBVB			0.75			Installed Properly	Outside Hose Bibb
BLDG. 440	LRS	440-1E	High - Contaminant	Containment	Both	Water Meter in Sprinkler Room	RP	Watts	909	1.5	327609		Installed Properly	Containment Assembly
BLDG. 440	LRS	440-2E	Low - Pollution	Containment	Both	Fire Pump Room #158	DCDA	Watts	757DCDA-GV	6	PE0447		Installed Properly	Fire Protection System
BLDG. 440	LRS	440-3E	Low - Pollution	Containment	Both	Fire Pump Room #158	DCV	Watts	007 M3 QT	0.75	210818		Installed Properly	Fire Protection Detector Assembly
BLDG. 440	LRS	440-4E	High - Contaminant	Isolation	Backsiphonage	Fire Pump Room #158	HBVB			0.75			Installed Properly	Hose Bibb
BLDG. 440	LRS	440-5E	High - Contaminant	Isolation	Backsiphonage	East Wall	HBVB			0.75			Installed Properly	Outside Hose Bibb
BLDG. 440	LRS	440-6E	High - Contaminant	Isolation	Backsiphonage	East Wall	HBVB			0.75			Installed Properly	Outside Hose Bibb

Facility Number	Facility Name	Device Number	Hazard Level	Protection Type	Cross-Connection Type	Location	Device Type	Manufacturer	Model	Size	Serial Number	Recommendation	Equipment Status	Comments
BLDG. 440	LRS	440-7E	High - Contaminant	Isolation	Backsiphonage	Outside Hose Bibb	HBVB			0.75			Installed Properly	Outside Hose Bibb
BLDG. 440	LRS	440-8E	High - Contaminant	Isolation	Backsiphonage	Outside Hose Bibb	HBVB			0.75			Installed Properly	Outside Hose Bibb
BLDG. 440	LRS	440-9E	High - Contaminant	Isolation	Backsiphonage	Outside Hose Bibb	HBVB			0.75			Installed Properly	Outside Hose Bibb
BLDG. 440	LRS	440-10E	High - Contaminant	Isolation	Backsiphonage	Room #155	AVB			0.5			Installed Properly	Slop Sink
BLDG. 440	LRS	440-11E	High - Contaminant	Isolation	Backsiphonage	Garage Outside Room #155	HBVB			0.75			Installed Properly	Hose Bibb
BLDG. 440	LRS	440-12E	High - Contaminant	Isolation	Backsiphonage	Garage Tire Area	HBVB			0.75			Installed Properly	Hose Bibb
BLDG. 440	LRS	440-13E	High - Contaminant	Isolation	Backsiphonage	Garage Tire Area	HBVB			0.75			Installed Properly	Hose Bibb
BLDG. 440	LRS	440-14E	High - Contaminant	Isolation	Backsiphonage	Garage Outside Room #160	HBVB			0.75			Installed Properly	Hose Bibb
BLDG. 440	LRS	440-15E	High - Contaminant	Isolation	Backsiphonage	Wash Bay #157	AG			1			Installed Properly	Power Washer (Supplied by Hose Bibb with HBVB)
BLDG. 440	LRS	440-16E	High - Contaminant	Isolation	Backsiphonage	Wash Bay #157	HBVB			0.75			Installed Properly	Hose Bibb
BLDG. 440	LRS	440-17E	High - Contaminant	Isolation	Backsiphonage	Wash Bay #157	HBVB			0.75			Installed Properly	Hose Bibb
BLDG. 440	LRS	440-18E	High - Contaminant	Isolation	Backsiphonage	Wash Bay #157	HBVB			0.75			Installed Properly	Hose Bibb
BLDG. 440	LRS	440-19E	High - Contaminant	Isolation	Backsiphonage	Wash Bay #157	HBVB			0.75			Installed Properly	Hose Bibb
BLDG. 440	LRS	440-20E	High - Contaminant	Isolation	Backsiphonage	South Wall in Garage	HBVB			0.75			Installed Properly	Hose Bibb
BLDG. 440	LRS	440-21E	High - Contaminant	Isolation	Backsiphonage	South Wall in Garage	HBVB			0.75			Installed Properly	Hose Bibb
BLDG. 440	LRS	440-22E	High - Contaminant	Isolation	Backsiphonage	South Wall in Garage	HBVB			0.75			Installed Properly	Hose Bibb
BLDG. 440	LRS	440-23E	High - Contaminant	Isolation	Backsiphonage	South Wall in Garage	HBVB			0.75			Installed Properly	Hose Bibb
BLDG. 440	LRS	440-24E	High - Contaminant	Isolation	Backsiphonage	North West Corner of Garage	HBVB			0.75			Installed Properly	Hose Bibb
BLDG. 440	LRS	440-25E	High - Contaminant	Isolation	Backsiphonage	Garage Outside Room #154	HBVB			0.75			Installed Properly	Hose Bibb
BLDG. 440	LRS	440-26E	Low - Pollution	Isolation	Backsiphonage	Break Room #132	AG			1			Installed Properly	Coffee Pot (Bunn)
BLDG. 440	LRS	440-27E	High - Contaminant	Isolation	Backsiphonage	Break Room #132	AG			1			Installed Properly	Ice Machine Condenser Drain
BLDG. 440	LRS	440-28E	High - Contaminant	Isolation	Both	Janitor's Closet #138	AVB			0.5			Install Required	Slop Sink - Supplies Soap Dispenser Through a Valved Wye Connection
BLDG. 440	LRS	440-29E	High - Contaminant	Isolation	Backsiphonage	Janitor's Closet #138	AG			1			Install Required	Soap Dispenser (ASSE #1055B) - Supplied From Slop Sink Through a Vavled Wye Connection
BLDG. 440	LRS	440-30R	High - Contaminant	Isolation	Both	Janitor's Closet #138	Install					Remove Valved Wye Connection From Hose Threads of Slop Sink and Install Water Wasting Tee	Install Required	Slop Sink - Supplies Soap Dispenser Through a Valved Wye Connection - No Valves Allowed Downstream of Vacuum Breaker ASSE 1001 or ASSE 1011 - Tee Will Supply Valved Wye and Soap Dispenser
BLDG. 440	LRS	440-31E	High - Contaminant	Isolation	Backsiphonage	Mechanical Room	HBVB			0.75			Installed Properly	Hose Bibb
BLDG. 440	LRS	440-32E	High - Contaminant	Isolation	Backsiphonage	Restrooms (4)	RRF						Installed Properly	Restroom Fixtures (7)

2.2 EXISTING TESTABLE BACKFLOW PREVENTION ASSEMBLIES

There are presently **fifty (50)** existing backflow prevention assemblies that require testing. To assist facility personnel with identification of testable backflow prevention devices, an “Existing Testable Devices List” has been included noting device locations and information.

132D Wing - Existing Testable Backflow Assemblies

Facility Number	Facility Name	Device Number	Hazard Level	Protection Type	Cross-Connection Type	Location	Device Type	Manufacturer	Model	Size	Serial Number	Equipment Status	Comments
BLDG. 100	WING	100-1E	High - Contaminant	Containment	Both	Boiler Room #130	RP	Watts	909	4	Illegible	Installed Properly	Containment Assembly at Water Meter
BLDG. 100	WING	100-3E	High - Contaminant	Isolation	Both	Boiler Room #130	RP	Watts	009 M2	0.75	64879	Installed Properly	Treated Boiler
BLDG. 100	WING	100-11E	High - Contaminant	Containment	Both	Pump Room #148	DCV	Ames	2000 SE	8	2EL0768	Repair/Replace	Fire Protection System - System Contains Foam - Inappropriate Backflow Preventer
BLDG. 100	WING	100-25E	High - Contaminant	Isolation	Both	Room #315	RP	Watts	009 M2	0.75	64876	Installed Properly	Treated Boiler
BLDG. 101	CST	101-5E	Low - Pollution	Containment	Both	North bay (This Part of Building Soon to be Demoed)	DCV	Ames	2000 SS	4	2FL1191	Installed Properly	Fire Protection System
BLDG. 101	CST	101-6E	High - Contaminant	Containment	Both	Water Meter in Boiler Room	RP	Watts	909 MOD	2	261999	Installed Properly	Containment Assembly at Water Meter
BLDG. 110	FSS/MEDICAL/DFAC	110-4E	High - Contaminant	Isolation	Both	Boiler Room	RP	Apollo/Conbraco	40205A2	1	M8103	Installed Properly	Treated Boiler
BLDG. 110	FSS/MEDICAL/DFAC	110-5E	High - Contaminant	Containment	Both	Boiler Room Crawl Space	RP	Watts	9	3	5017	Installed Properly	Containment Assembly at Water Meter
BLDG. 110	FSS/MEDICAL/DFAC	110-6E	High - Contaminant	Isolation	Both	Boiler Room	RP	Watts	009 M2	0.75	32461	Installed Properly	Treated Boiler
BLDG. 124	TTF	124-7E	High - Contaminant	Containment	Both	Weapon Room	RP	Watts	9	3	5022	Installed Properly	Containment Assembly at Water Meter
BLDG. 124	TTF	124-13E	High - Contaminant	Isolation	Both	Boiler Room #103	RP	Watts	909-QT	1	582742	Installed Properly	Treated Boiler
BLDG. 124	TTF	124-14E	Low - Pollution	Containment	Both	Pump Room #102	DCV	Watts	757	6	IH5967	Installed Properly	Fire Protection System
BLDG. 125	CIVIL AIR PATROL	125-1E	High - Contaminant	Isolation	Both	Boiler Room #109A	RP	Hersey/Beeco	FRP II	0.75	942175	Installed Properly	Treated Boiler
BLDG. 125	CIVIL AIR PATROL	125-6E	High - Contaminant	Containment	Both	Pump Room #101	RP	Watts	009	3	5945	Installed Properly	Containment Assembly at Water Meter
BLDG. 125	CIVIL AIR PATROL	125-7E	High - Contaminant	Containment	Both	Pump Room #101	DCV	Febco	805YD	6	9411041601	Repair/Replace	Fire Protection System - System Contains Foam - Inappropriate Backflow Preventer
BLDG. 132	BX	132-4E	High - Contaminant	Containment	Both	Mechanical Room #109	RP	Watts	9	1	12704	Installed Properly	Containment Assembly at Water Meter
BLDG. 132	BX	132-5E	High - Contaminant	Containment	Both	Mechanical Room #109	RP	Watts	9	0.75	64888	Installed Properly	Containment Assembly at Water Meter (device is installed downstream of RP and is not necessary)
BLDG. 160	ARMY	160-1E	High - Contaminant	Containment	Both	Pump Room	RP	Watts	009 M2	2	275778	Installed Properly	Containment Assembly at Water Meter
BLDG. 160	ARMY	160-2E	High - Contaminant	Containment	Both	Pump Room	RP	Watts	009 M2	2	275782	Installed Properly	Containment Assembly at Water Meter
BLDG. 160	ARMY	160-3E	Low - Pollution	Containment	Both	Pump Room	DCV	Ames	2000 SS	6	1652190110	Installed Properly	Fire Protection System
BLDG. 160	ARMY	160-5E	High - Contaminant	Isolation	Both	Boiler Room #104	RP	Watts	909 MOD	0.75	333864	Installed Properly	Treated Boiler
BLDG. 180	DTOC	180-8E	High - Contaminant	Containment	Both	Mechanical Room #108	RP	Watts	009 M2	2	281920	Installed Properly	Containment Assembly at Water Meter
BLDG. 180	DTOC	180-9E	High - Contaminant	Containment	Both	Mechanical Room #108	RP	Watts	009 M2	2	281928	Installed Properly	Containment Assembly at Water Meter
BLDG. 180	DTOC	180-15E	Low - Pollution	Isolation	Both	Boiler Room #109	RP	Watts	9	0.5	310834	Installed Properly	Untreated Boiler
BLDG. 180	DTOC	180-18E	High - Contaminant	Isolation	Both	Mechanical Room #114	RP	Apollo/Conbraco	40204A2	0.75	L5126	Installed Properly	Chilled Water Make-Up
BLDG. 180	DTOC	180-22E	Low - Pollution	Containment	Both	Pump Room #125	RP	Ames	4000 SS	4	4CJ0017	Installed Properly	Fire Protection System
BLDG. 180	DTOC	180-23E	High - Contaminant	Isolation	Both	Pump Room #125	RP	Apollo/Conbraco	40205T2	1	01401T	Installed Properly	Chemical Tank Make-Up

Facility Number	Facility Name	Device Number	Hazard Level	Protection Type	Cross-Connection Type	Location	Device Type	Manufacturer	Model	Size	Serial Number	Equipment Status	Comments
BLDG. 240	COMM	240-1E	Low - Pollution	Containment	Both	Outside Pump House	DCV	Ames	colt-200	6	LG0862	Installed Properly	Fire Protection System
BLDG. 240	COMM	240-2E	Low - Pollution	Containment	Both	Boiler Room	DCV	Watts	757	6		Installed Properly	Fire Protection System (Redundant, Not Needed)
BLDG. 240	COMM	240-3E	High - Contaminant	Containment	Both	Boiler Room	RP	Watts	9	2.5	32701	Installed Properly	Containment Assembly at Water Meter
BLDG. 240	COMM	240-4E	High - Contaminant	Isolation	Both	Boiler Room	RP	Apollo	RP40	0.75	225170	Installed Properly	Treated Boiler
BLDG. 300	SECURITY	300-1E	High - Contaminant	Containment	Both	Pump Room	RP	Watts	009 M2 QT	2	135516	Installed Properly	Containment Assembly at Water Meter
BLDG. 300	SECURITY	300-2E	Low - Pollution	Containment	Both	Pump Room	DCV	Ames	COLT200	6	L80930	Installed Properly	Fire Protection System
BLDG. 315	ALERT HANGAR	315-1E	High - Contaminant	Containment	Both	Mechanical Room	RP	Watts	009	2	77990	Installed Properly	Containment Assembly at Water Meter
BLDG. 316	HEATING PLANT &	316-1E	High - Contaminant	Containment	Both	By Water Meter in Boiler Room	RP	Watts	9	2	72560	Installed Properly	Containment Assembly
BLDG. 316	HEATING PLANT &	316-3E	High - Contaminant	Isolation	Both	Boiler Room	RP	Apollo/Conbraco	40204A2	0.75	L5118	Installed Properly	Treated Boiler
BLDG. 319	PUMP HOUSE	319-1E	Low - Pollution	Containment	Both	Fire Protection System	DCV	Ames	2000 SE	8	2EL0784	Installed Properly	Fire Protection System
BLDG. 320	MUNITIONS ADMIN	320-1E	High - Contaminant	Isolation	Both	Boiler Room	RP	Watts	909MOD	0.75	23719	Installed Properly	Treated Boiler
BLDG. 320	MUNITIONS ADMIN	320-2E	High - Contaminant	Containment	Both	Furnace Room	RP	Watts	9	1.5	72718	Installed Properly	Containment Assembly
BLDG. 322	MUNITIONS	322-2E	High - Contaminant	Isolation	Both	Boiler Room #303	RP	Apollo/Conbraco	40204A2	0.75	Y7518	Installed Properly	Treated Boiler
BLDG. 410	CE	410-1E	High - Contaminant	Containment	Both	Garage	RP	Watts	909MOD	3	163136	Installed Properly	Containment Assembly at Water Meter
BLDG. 410	CE	410-14E	Low - Pollution	Containment	Both	Paint Room #127	DCV	Watts	709	8		Installed Properly	Fire Protection System
BLDG. 430	RPA/ISRG	430-1E	Low - Pollution	Containment	Both	Pump Room	RP	Watts	909 M1	8	625092	Installed Properly	Fire Protection System
BLDG. 430	RPA/ISRG	430-2E	High - Contaminant	Containment	Both	Mechanical Room #1902	RP	Watts	957	3	OK0462	Installed Properly	Containment Assembly at Water Meter
BLDG. 430	RPA/ISRG	430-3E	High - Contaminant	Isolation	Both	Mechanical Room #1902	RP	Watts	LF009M3QT	0.75	61648	Installed Properly	Glycol Tank Make-Up for Cooling Tower
BLDG. 430	RPA/ISRG	430-4E	High - Contaminant	Isolation	Both	Mechanical Room #1092	RP	Watts	LF009M2QT	1.5	33161	Installed Properly	Cooling Tower Make-Up
BLDG. 430	RPA/ISRG	430-5E	High - Contaminant	Isolation	Backsiphonage	Mechanical Room #1092	RP	Watts	LF009M2	0.5	94538	Installed Properly	Humidifier Make-Up
BLDG. 440	LRS	440-1E	High - Contaminant	Containment	Both	Water Meter in Sprinkler Room	RP	Watts	909	1.5	327609	Installed Properly	Containment Assembly
BLDG. 440	LRS	440-2E	Low - Pollution	Containment	Both	Fire Pump Room #158	DCDA	Watts	757DCDA-GV	6	PE0447	Installed Properly	Fire Protection System
BLDG. 440	LRS	440-3E	Low - Pollution	Containment	Both	Fire Pump Room #158	DCV	Watts	007 M3 QT	0.75	210818	Installed Properly	Fire Protection Detector Assembly

2.2.1 BLDG. 100 – Wing

Location:	Boiler Room #130 101-1E			Location:	Boiler Room #130		
Existing ID #:	101-1E	BFP Type:	RP	Existing ID #:	100-3E	BFP Type:	RP
Manufacturer:	Watts	Model:	909	Manufacturer:	Watts	Model:	909M2
Size:	4"	Serial #:	Illegible	Size:	.75"	Serial:	64879
Hazard Level:	High	CC Type:	Both	Hazard Level:	High	CC Type:	Both
Equipment Status:	Installed Properly	Protection Type:	Containment	Equipment Status:	Installed Properly	Protection Type:	Containment
Recommendation:				Recommendation:			
Comments:	Containment Assembly at Water Meter			Comments:	Treated Boiler		



BLDG. 100 – Wing

Location:	Pump Room #148			Location:	Room #315		
Existing ID #:	100-11E	BFP Type:	DCV	Existing ID #:	100-25E	BFP Type:	RP
Manufacturer:	Ames	Model:	2000SE	Manufacturer:	Watts	Model:	009 M2
Size:	8"	Serial #:	2EL0768	Size:	.75"	Serial:	64876
Hazard Level:	High	CC Type:	Both	Hazard Level:	High	CC Type:	Both
Equipment Status:	Repair/Replace	Protection Type:	Containment	Equipment Status:	Installed Properly	Protection Type:	Isolation
Recommendation:				Recommendation:			
Comments:	Fire Protection System - System Contains Foam - Inappropriate Backflow Preventer			Comments:	Treated Boiler		



2.2.2 BLDG. 101 - CST

Location:	North bay (This Part of Building Soon to be Demoed)			Location:	Water Meter in Boiler Room		
Existing ID #:	101-5E	BFP Type:	DCV	Existing ID #:	101-6E	BFP Type:	RP
Manufacturer:	Ames	Model:	2000 SS	Manufacturer:	Watts	Model:	909 MOD
Size:	4"	Serial #:	2FL1191	Size:	2"	Serial:	261999
Hazard Level:	Low	CC Type:	Both	Hazard Level:	High	CC Type:	Both
Equipment Status:	Installed Properly	Protection Type:	Containment	Equipment Status:	Installed Properly	Protection Type:	Containment
Recommendation:				Recommendation:			
Comments:	Fire Protection System			Comments:	Containment Assembly at Water Meter		



2.2.3 BLDG. 110 – FSS/Medical/DFAC

Location:	Boiler Room			Location:	Boiler Room Crawl Space		
Existing ID #:	110-4E	BFP Type:	RP	Existing ID #:	1-1-5E	BFP Type:	RP
Manufacturer:	Apollo/Conbraco	Model:	40205A2	Manufacturer:	Watts	Model:	009
Size:	1"	Serial #:	M8103	Size:	3"	Serial:	5017
Hazard Level:	High	CC Type:	Both	Hazard Level:	High	CC Type:	Both
Equipment Status:	Installed Properly	Protection Type:	Isolation	Equipment Status:	Installed Properly	Protection Type:	Containment
Recommendation:				Recommendation:			
Comments:	Treated Boiler			Comments:	Containment Assembly at Water Meter		



BLDG. 110 – FSS/Medical/DFAC

Location:	Boiler Room		
Existing ID #:	110-6E	BFP Type:	RP
Manufacturer:	Watts	Model:	009 M2
Size:	.75"	Serial #:	32461
Hazard Level:	High	CC Type:	Both
Equipment Status:	Installed Properly	Protection Type:	Isolation
Recommendation:			
Comments:	Treated Boiler		



2.2.4 BLDG. 124 - TTF

Location:	Weapon Room			Location:	Boiler Room #103		
Existing ID #:	124-7E	BFP Type:	RP	Existing ID #:	124-13E	BFP Type:	RP
Manufacturer:	Watts	Model:	009	Manufacturer:	Watts	Model:	909-QT
Size:	3"	Serial #:	5022	Size:	1"	Serial:	582742
Hazard Level:	High	CC Type:	Both	Hazard Level:	High	CC Type:	Both
Equipment Status:	Installed Properly	Protection Type:	Containment	Equipment Status:	Installed Properly	Protection Type:	Isolation
Recommendation:				Recommendation:			
Comments:	Containment Assembly at Water Meter			Comments:	Treated Boiler		



BLDG. 124 - TTF

Location:	Pump Room #102		
Existing ID #:	124-14E	BFP Type:	DCV
Manufacturer:	Watts	Model:	757
Size:	6"	Serial #:	IH5967
Hazard Level:	Low	CC Type:	Both
Equipment Status:	Installed Properly	Protection Type:	Containment
Recommendation:			
Comments:	Fire Protection System		



2.2.5 BLDG. 125 – Civil Air Patrol

Location:	Boiler Room #109A			Location:	Pump Room #101		
Existing ID #:	125-1E	BFP Type:	RP	Existing ID #:	125-6E	BFP Type:	RP
Manufacturer:	Hersey/Beeco	Model:	FRP II	Manufacturer:	Watts	Model:	009
Size:	.75"	Serial #:	942175	Size:	3"	Serial:	05945
Hazard Level:	High	CC Type:	Both	Hazard Level:	High	CC Type:	Both
Equipment Status:	Installed Properly	Protection Type:	Isolation	Equipment Status:	Installed Properly	Protection Type:	Containment
Recommendation:				Recommendation:			
Comments:	Treated Boiler			Comments:	Containment Assembly at Water Meter		

N O I M A G E



BLDG. 125 – Civil Air Patrol

Location:	Pump Room #101		
Existing ID #:	125-7E	BFP Type:	DCV
Manufacturer:	Febco	Model:	805YD
Size:	6"	Serial #:	9411041601
Hazard Level:	High	CC Type:	Both
Equipment Status:	Repair/Replace	Protection Type:	Containment
Recommendation:			
Comments:	Fire Protection System - System Contains Foam - Inappropriate Backflow Preventer		



2.2.6 BLDG. 132 - BX

Location:	Mechanical Room #109			Location:	Mechanical Room #109		
Existing ID #:	132-4E	BFP Type:	RP	Existing ID #:	132-5E	BFP Type:	RP
Manufacturer:	Watts	Model:	009	Manufacturer:	Watts	Model:	009
Size:	1"	Serial #:	12704	Size:	.75	Serial:	64888
Hazard Level:	High	CC Type:	Both	Hazard Level:	High	CC Type:	Both
Equipment Status:	Installed Properly	Protection Type:	Containment	Equipment Status:	Installed Properly	Protection Type:	Containment
Recommendation:				Recommendation:			
Comments:	Containment Assembly at Water Meter			Comments:	Containment Assembly at Water Meter (device is installed downstream of RPBP and is not necessary)		



2.2.7 BLDG. 160 - Army

Location:	Pump Room			Location:	Pump Room		
Existing ID #:	160-1E	BFP Type:	RP	Existing ID #:	160-2E	BFP Type:	RP
Manufacturer:	Watts	Model:	009 M2	Manufacturer:	Watts	Model:	009 M2
Size:	2"	Serial #:	275778	Size:	2"	Serial:	275782
Hazard Level:	High	CC Type:	Both	Hazard Level:	High	CC Type:	Both
Equipment Status:	Installed Properly	Protection Type:	Containment	Equipment Status:	Installed Properly	Protection Type:	Containment
Recommendation:				Recommendation:			
Comments:	Containment Assembly at Water Meter			Comments:	Containment Assembly at Water Meter		



BLDG. 160 - Army

Location:	Pump Room			Location:	Boiler Room #104		
Existing ID #:	160-3E	BFP Type:	DCV	Existing ID #:	160-5E	BFP Type:	RP
Manufacturer:	Ames	Model:	2000 SS	Manufacturer:	Watts	Model:	909 MOD
Size:	6"	Serial #:	1652190110	Size:	.75"	Serial:	333864
Hazard Level:	Low	CC Type:	Both	Hazard Level:	High	CC Type:	Both
Equipment Status:	Installed Properly	Protection Type:	Containment	Equipment Status:	Installed Properly	Protection Type:	Isolation
Recommendation:				Recommendation:			
Comments:	Fire Protection System			Comments:	Treated Boiler		



2.2.8 BLDG. 180 - DTOC

Location:	Mechanical Room #108			Location:	Mechanical Room #108		
Existing ID #:	180-8E	BFP Type:	RP	Existing ID #:	180-9E	BFP Type:	RP
Manufacturer:	Watts	Model:	009 M2	Manufacturer:	Watts	Model:	009 M2
Size:	2"	Serial #:	281920	Size:	2"	Serial:	281928
Hazard Level:	High	CC Type:	Both	Hazard Level:	High	CC Type:	Both
Equipment Status:	Installed Properly	Protection Type:	Containment	Equipment Status:	Installed Properly	Protection Type:	Containment
Recommendation:				Recommendation:			
Comments:	Containment Assembly at Water Meter			Comments:	Containment Assembly at Water Meter		



BLDG. 180 - DTOC

Location:	Boiler Room #109			Location:	Mechanical Room #114		
Existing ID #:	180-15E	BFP Type:	RP	Existing ID #:	180-18E	BFP Type:	RP
Manufacturer:	Watts	Model:	009	Manufacturer:	Apollo/Conbraco	Model:	40204A2
Size:	.5"	Serial #:	310834	Size:	.75"	Serial:	L5126
Hazard Level:	High	CC Type:	Both	Hazard Level:	High	CC Type:	Both
Equipment Status:	Installed Properly	Protection Type:	Isolation	Equipment Status:	Installed Properly	Protection Type:	Isolation
Recommendation:				Recommendation:			
Comments:	Untreated Boiler			Comments:	Chilled Water Make-Up		



BLDG. 180 – DTOC

Location:	Pump Room #125			Location:	Pump Room #125		
Existing ID #:	180-22E	BFP Type:	RP	Existing ID #:	180-23E	BFP Type:	RP
Manufacturer:	Ames	Model:	4000 SS	Manufacturer:	Apollo/Conbraco	Model:	40205T2
Size:	4"	Serial #:	4CJ0017	Size:	1"	Serial:	01401T
Hazard Level:	Low	CC Type:	Both	Hazard Level:	High	CC Type:	Both
Equipment Status:	Installed Properly	Protection Type:	Containment	Equipment Status:	Installed Properly	Protection Type:	Isolation
Recommendation:				Recommendation:			
Comments:	Fire Protection System			Comments:	Chemical Tank Make-Up		



2.2.9 BLDG. 240 - COMM

Location:	Outside Pump House			Location:	Boiler Room		
Existing ID #:	240-1E	BFP Type:	DCV	Existing ID #:	240-2E	BFP Type:	DCV
Manufacturer:	Ames	Model:	Colt-200	Manufacturer:	Watts	Model:	757
Size:	6"	Serial #:	LG0862	Size:	6"	Serial:	N/A
Hazard Level:	Low	CC Type:	Both	Hazard Level:	Low	CC Type:	Both
Equipment Status:	Installed Properly	Protection Type:	Containment	Equipment Status:	Installed Properly	Protection Type:	Containment
Recommendation:				Recommendation:			
Comments:	Fire Protection System			Comments:	Fire Protection System (Redundant, Not Needed)		



BLDG. 240 – COMM

Location:	Boiler Room			Location:	Boiler Room		
Existing ID #:	240-3E	BFP Type:	RP	Existing ID #:	240-4E	BFP Type:	RP
Manufacturer:	Watts	Model:	009	Manufacturer:	Apollo	Model:	RP40
Size:	2.5"	Serial #:	32701	Size:	.75"	Serial:	225170
Hazard Level:	High	CC Type:	Both	Hazard Level:	High	CC Type:	Both
Equipment Status:	Installed Properly	Protection Type:	Containment	Equipment Status:	Installed Properly	Protection Type:	Isolation
Recommendation:				Recommendation:			
Comments:	Containment Assembly at Water Meter			Comments:	Treated Boiler		



2.2.10 BLDG. 300 - Security

Location:	Pump Room			Location:	Pump Room		
Existing ID #:	300-1E	BFP Type:	RP	Existing ID #:	300-2E	BFP Type:	DCV
Manufacturer:	Watts	Model:	009 M2QT	Manufacturer:	Ames	Model:	Colt 200
Size:	2"	Serial #:	135516	Size:	6"	Serial:	LB0930
Hazard Level:	High	CC Type:	Both	Hazard Level:	Low	CC Type:	Both
Equipment Status:	Installed Properly	Protection Type:	Containment	Equipment Status:	Installed Properly	Protection Type:	Containment
Recommendation:				Recommendation:			
Comments:	Containment Assembly at Water Meter			Comments:	Fire Protection System		



2.2.11 BLDG. 315 – Alert Hangar

Location:	Mechanical Room		
Existing ID #:	315-1E	BFP Type:	RP
Manufacturer:	Watts	Model:	009
Size:	2"	Serial #:	77990
Hazard Level:	High	CC Type:	Both
Equipment Status:	Installed Properly	Protection Type:	Containment
Recommendation:			
Comments:	Containment Assembly at Water Meter		



2.2.12 BLDG. 316 – Heating Plant

Location:	By Water Meter in Boiler Room			Location:	Boiler Room		
Existing ID #:	316-1E	BFP Type:	RP	Existing ID #:	316-3E	BFP Type:	RP
Manufacturer:	Watts	Model:	009	Manufacturer:	Apollo/Conbraco	Model:	40204A12
Size:	2"	Serial #:	72560	Size:	.75"	Serial:	L5118
Hazard Level:	High	CC Type:	Both	Hazard Level:	High	CC Type:	Both
Equipment Status:	Installed Properly	Protection Type:	Containment	Equipment Status:	Installed Properly	Protection Type:	Isolation
Recommendation:				Recommendation:			
Comments:	Containment Assembly			Comments:	Treated Boiler		



2.2.13 BLDG. 319 – Pump House

Location:	Fire Protection System		
Existing ID #:	319-1E	BFP Type:	DCV
Manufacturer:	Ames	Model:	2000 SE
Size:	8"	Serial #:	2EL0784
Hazard Level:	Low	CC Type:	Both
Equipment Status:	Installed Properly	Protection Type:	Containment
Recommendation:			
Comments:	Fire Protection System		



2.2.14 BLDG. 320 Munitions Admin.

Location:	Boiler Room			Location:	Furnace Room		
Existing ID #:	320-1E	BFP Type:	RP	Existing ID #:	320-2E	BFP Type:	RP
Manufacturer:	Watts	Model:	909 MOD	Manufacturer:	Watts	Model:	009
Size:	.75"	Serial #:	23719	Size:	1.5"	Serial:	72718
Hazard Level:	High	CC Type:	Both	Hazard Level:	High	CC Type:	Both
Equipment Status:	Installed Properly	Protection Type:	Isolation	Equipment Status:	Installed Properly	Protection Type:	Containment
Recommendation:				Recommendation:			
Comments:	Treated Boiler			Comments:	Containment Assembly		



2.2.15 BLDG. 322 - Munitions

Location:	Boiler Room #303		
Existing ID #:	322-2E	BFP Type:	RP
Manufacturer:	Apollo/Conbraco	Model:	40204A2
Size:	.75"	Serial #:	Y7518
Hazard Level:	High	CC Type:	Both
Equipment Status:	Installed Properly	Protection Type:	Isolation
Recommendation:			
Comments:	Treated Boiler		



2.2.16 BLDG. 410 - CE

Location:	Garage			Location:	Pump Room #127		
Existing ID #:	410-1E	BFP Type:	RP	Existing ID #:	410-14E	BFP Type:	DCV
Manufacturer:	Watts	Model:	909 MOD	Manufacturer:	Watts	Model:	709
Size:	3"	Serial #:	163136	Size:	8"	Serial:	N/A
Hazard Level:	High	CC Type:	Both	Hazard Level:	Low	CC Type:	Both
Equipment Status:	Installed Properly	Protection Type:	Containment	Equipment Status:	Installed Properly	Protection Type:	Containment
Recommendation:				Recommendation:			
Comments:	Containment Assembly at Water Meter			Comments:	Fire Protection System		



2.2.17 BLDG. 430 – RPA/ISRG

Location:	Pump Room			Location:	Mechanical Room #1902		
Existing ID #:	430-1E	BFP Type:	RP	Existing ID #:	430-2E	BFP Type:	RP
Manufacturer:	Watts	Model:	709	Manufacturer:	Watts	Model:	957
Size:	8"	Serial #:	625092	Size:	3"	Serial:	OK0462
Hazard Level:	Low	CC Type:	Both	Hazard Level:	High	CC Type:	Both
Equipment Status:	Installed Properly	Protection Type:	Containment	Equipment Status:	Installed Properly	Protection Type:	Containment
Recommendation:				Recommendation:			
Comments:	Fire Protection System			Comments:	Containment Assembly at Water Meter		



BLDG. 430 – RPA/ISRG

Location:	Mechanical Room #1902			Location:	Mechanical Room #1902		
Existing ID #:	430-3E	BFP Type:	RP	Existing ID #:	430-4E	BFP Type:	RP
Manufacturer:	Watts	Model:	LF009M3QT	Manufacturer:	Watts	Model:	LF009M3QT
Size:	.75"	Serial #:	61648	Size:	1.5"	Serial:	33161
Hazard Level:	High	CC Type:	Both	Hazard Level:	High	CC Type:	Both
Equipment Status:	Installed Properly	Protection Type:	Isolation	Equipment Status:	Installed Properly	Protection Type:	Isolation
Recommendation:				Recommendation:			
Comments:	Glycol Tank Make-Up for Cooling Tower			Comments:	Cooling Tower Make-Up		



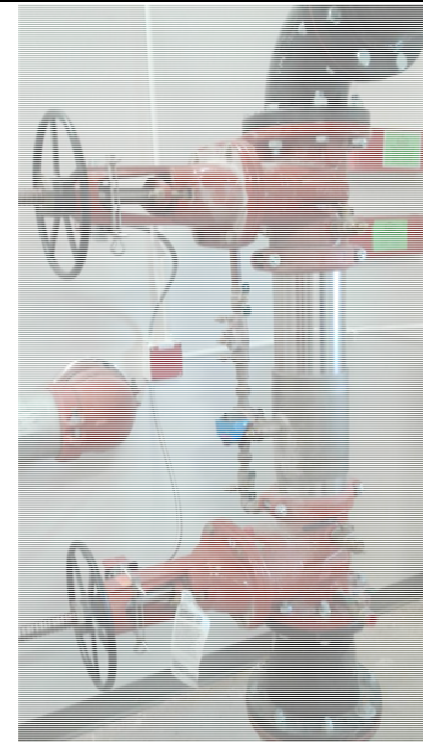
BLDG. 430 – RPA/ISRG

Location:	Mechanical Room #1902		
Existing ID #:	430-5E	BFP Type:	RP
Manufacturer:	Watts	Model:	LF009M3QT
Size:	.5"	Serial #:	94538
Hazard Level:	High	CC Type:	Both
Equipment Status:	Installed Properly	Protection Type:	Isolation
Recommendation:			
Comments:	Humidifier Make-Up		



2.2.18 BLDG. 440 - LRS

Location:	Water Meter in Sprinkler Room			Location:	Fire Pump Room #158		
Existing ID #:	440-1E	BFP Type:	RP	Existing ID #:	440-2E	BFP Type:	DCDA
Manufacturer:	Watts	Model:	909	Manufacturer:	Watts	Model:	757DCDA
Size:	1.5"	Serial #:	327609	Size:	6"	Serial:	PE0447
Hazard Level:	High	CC Type:	Both	Hazard Level:	Low	CC Type:	Both
Equipment Status:	Installed Properly	Protection Type:	Containment	Equipment Status:	Installed Properly	Protection Type:	Containment
Recommendation:				Recommendation:			
Comments:	Containment Assembly			Comments:	Fire Protection System		



BLDG. 440 - LRS

Location:	Fire Pump Room #158		
Existing ID #:	440-3E	BFP Type:	DCV
Manufacturer:	Watts	Model:	007M3QT
Size:	.75	Serial #:	210818
Hazard Level:	Low	CC Type:	Both
Equipment Status:	Installed Properly	Protection Type:	Containment
Recommendation:			
Comments:	Fire Protection Detector Assembly		



2.3 REQUIRED CORRECTIVE ACTIONS

There are presently **fifty-four (54)** existing cross connections that require additional protection or piping modification to properly protect the potable water supply. To assist facility personnel with locating required corrective actions, a “Required Corrective Actions List” has been included noting device locations and information.

132D Wing - Recommendations

Facility Number	Facility Name	Device Number	Hazard Level	Protection Type	Cross-Connection Type	Location	Device Type	Size	Recommendation	Equipment Status	Comments
BLDG. 100	WING	100-2R	High - Contaminant	Isolation	Backsiphonage	Boiler Room #130	HBVB	0.75	Install Hose Bibb Vacuum Breaker (ASSE #1011)	Install Required	Hose Threads of Slop Sink
BLDG. 100	WING	100-7R	High - Contaminant	Isolation	Both	Hallway Outside of Boiler Room #130	Install		Remove Valved Wye Connection From Hose Threads of Slop Sink and Install Water Wasting Tee	Install Required	Slop Sink - Supplies Soap Dispenser Through a Valved Wye Connection - No Valves Allowed Downstream of Vacuum Breaker ASSE 1001 or ASSE 1011 - Tee Will Supply Valved Wye and Soap Dispenser
BLDG. 100	WING	100-12R	High - Contaminant	Containment	Both	Pump Room #148	RP	8	Install Reduced Pressure Backflow Prevention Assembly (ASSE #1013)	Install Required	Supply to Fire Protection system in Pump Room #148 - Replaces Inappropriate Existing DCV Due to Foam System
BLDG. 100	WING	100-13R	High - Contaminant	Isolation	Backsiphonage	West Hangar Next to Eyewash	HBVB	0.75	Install Hose Bibb Vacuum Breaker (ASSE #1011)	Install Required	Hose Threads of Hot Water Hose Bibb
BLDG. 100	WING	100-14R	High - Contaminant	Isolation	Backsiphonage	West Hangar Next to Eyewash	HBVB	0.75	Install Hose Bibb Vacuum Breaker (ASSE #1011)	Install Required	Hose Threads of Cold Water Hose Bibb
BLDG. 100	WING	100-15R	High - Contaminant	Isolation	Backsiphonage	Laundry Room	HBVB	0.75	Install Hose Bibb Vacuum Breaker (ASSE #1011)	Install Required	Hose Threads of Hot Water Hose Bibb (NOTE: Hose Bibb Vacuum Breakers Not Required if Washing Machine Installed)
BLDG. 100	WING	100-15R	High - Contaminant	Isolation	Backsiphonage	Laundry Room	HBVB	0.75	Install Hose Bibb Vacuum Breaker (ASSE #1011)	Install Required	Hose Threads of Cold Water Hose Bibb (NOTE: Hose Bibb Vacuum Breakers Not Required if Washing Machine Installed)
BLDG. 100	WING	100-22R	High - Contaminant	Isolation	Both	Janitor's Room #221	Install		Remove Valved Wye Connection From Hose Threads of Slop Sink and Install Water Wasting Tee	Install Required	Slop Sink - Supplies Soap Dispenser Through a Valved Wye Connection - No Valves Allowed Downstream of Vacuum Breaker ASSE 1001 or ASSE 1011 - Tee Will Supply Valved Wye and Soap Dispenser
BLDG. 100	WING	100-23R	High - Contaminant	Isolation	Backsiphonage	Janitor's Room #221	HBVB	0.75	Install Hose Bibb Vacuum Breaker (ASSE #1011)	Install Required	Hose Threads of Hot Water Hose Bibb
BLDG. 100	WING	100-24R	High - Contaminant	Isolation	Backsiphonage	Janitor's Room #221	HBVB	0.75	Install Hose Bibb Vacuum Breaker (ASSE #1011)	Install Required	Hose Threads of Hot Water Hose Bibb
BLDG. 101	CST	101-4R	High - Contaminant	Isolation	Backsiphonage	North Bay (This Part of Building Soon to be Demoed)	HBVB	0.75	Install Hose Bibb Vacuum Breaker (ASSE #1011)	Install Required	Hose Bibb
BLDG. 110	FSS/MEDICAL/DFAC	110-10R	High - Contaminant	Isolation	Backsiphonage	Under Sink in Kitchen Along Perimeter Wall	HBVB	0.75	Install Hose Bibb Vacuum Breaker (ASSE #1011)	Install Required	Hot Water Hose Bibb
BLDG. 110	FSS/MEDICAL/DFAC	110-11R	High - Contaminant	Isolation	Backsiphonage	Under Sink in Kitchen Along Perimeter Wall	HBVB	0.75	Install Hose Bibb Vacuum Breaker (ASSE #1011)	Install Required	Cold Water Hose Bibb
BLDG. 110	FSS/MEDICAL/DFAC	110-12R	Low - Pollution	Isolation	Both	Kitchen	VDCV	0.75	Install Dual Check with Intermediate Vent (ASSE #1012)	Install Required	Supply to Steam Oven
BLDG. 110	FSS/MEDICAL/DFAC	110-25R	High - Contaminant	Isolation	Both	Mess Hall	VMBP	0.375	Install Backflow Preventer for Beverage Dispensing Equipment (ASSE #1022)	Install Required	Supply to Soda Fountain Carbonator (1 of 2)
BLDG. 110	FSS/MEDICAL/DFAC	110-26R	Low - Pollution	Isolation	Both	Mess Hall	VMBP	0.375	Install Backflow Preventer for Beverage Dispensing Equipment (ASSE #1022)	Install Required	Supply to Bloomfield Coffee Maker - or Provide Documentation of Internal Approved Backflow Prevention
BLDG. 110	FSS/MEDICAL/DFAC	110-27R	High - Contaminant	Isolation	Both	Mess Hall	VMBP	0.375	Install Backflow Preventer for Beverage Dispensing Equipment (ASSE #1022)	Install Required	Supply to Soda Fountain Carbonator (2 of 2)
BLDG. 110	FSS/MEDICAL/DFAC	110-30R	High - Contaminant	Isolation	Both	Janitor's Closet	Install		Remove Valved Wye Connection From Hose Threads of Slop Sink and Install Water Wasting Tee	Install Required	Slop Sink - Supplies Soap Dispenser Through a Valved Wye Connection - No Valves Allowed Downstream of Vacuum Breaker ASSE 1001 or ASSE 1011 - Tee Will Supply Valved Wye and Soap Dispenser
BLDG. 110	FSS/MEDICAL/DFAC	110-35R	High - Contaminant	Isolation	Both	Janitor's Closet #123	Install		Remove Valved Wye Connection From Hose Threads of Slop Sink and Install Water Wasting Tee	Install Required	Slop Sink - Supplies Soap Dispenser Through a Valved Wye Connection - No Valves Allowed Downstream of Vacuum Breaker ASSE 1001 or ASSE 1011 - Tee Will Supply Valved Wye and Soap Dispenser
BLDG. 124	TTF	124-3R	High - Contaminant	Isolation	Both	Janitor's Closet #236	Install		Remove Valved Wye Connection From Hose Threads of Slop Sink and Install Water Wasting Tee	Install Required	Slop Sink - Supplies Soap Dispenser Through a Valved Wye Connection - No Valves Allowed Downstream of Vacuum Breaker ASSE 1001 or ASSE 1011 - Tee Will Supply Valved Wye and Soap Dispenser
BLDG. 124	TTF	124-11R	High - Contaminant	Isolation	Backsiphonage	Men's Locker Room #130	HBVB	0.75	Install Hose Bibb Vacuum Breaker (ASSE #1011)	Install Required	Hose Bibb in Shower

Facility Number	Facility Name	Device Number	Hazard Level	Protection Type	Cross-Connection Type	Location	Device Type	Size	Recommendation	Equipment Status	Comments
BLDG. 125	CIVIL AIR PATROL	125-3R	High - Contaminant	Isolation	Both	Boiler Room #109A	RP	0.75	Install Reduced Pressure Backflow Prevention Assembly (ASSE #1013)	Install Required	Supply to Compressed Air Piping
BLDG. 125	CIVIL AIR PATROL	125-8R	High - Contaminant	Containment	Both	Pump Room #101	RP	6	Replace Existing Inappropriate DCV (#1015) with RP (ASSE #1013) Due to Foam Fire Protection System	Repair/Replace	Fire Protection System - or Disconnect Chemical Foam Tanks (Tanks are Empty and Not in Use)
BLDG. 125	CIVIL AIR PATROL	125-22R	High - Contaminant	Isolation	Both	Janitor's Closet #104B	Install		Remove Valved Wye Connection From Hose Threads of Slop Sink and Install Water Wasting Tee	Install Required	Slop Sink - Supplies Soap Dispenser Through a Valved Wye Connection - No Valves Allowed Downstream of Vacuum Breaker ASSE 1001 or ASSE 1011 - Tee Will Supply Valved Wye and Soap Dispenser
BLDG. 132	BX	132-3R	High - Contaminant	Isolation	Both	Restroom #108	Install		Remove Valved Wye Connection From Hose Threads of Slop Sink and Install Water Wasting Tee	Install Required	Slop Sink - Supplies Soap Dispenser Through a Valved Wye Connection - No Valves Allowed Downstream of Vacuum Breaker ASSE 1001 or ASSE 1011 - Tee Will Supply Valved Wye and Soap Dispenser
BLDG. 132	BX	132-7R	High - Contaminant	Isolation	Both	Retail Store Restroom	Install		Remove Valved Wye Connection From Hose Threads of Slop Sink and Install Water Wasting Tee	Install Required	Slop Sink - Supplies Soap Dispenser Through a Valved Wye Connection - No Valves Allowed Downstream of Vacuum Breaker ASSE 1001 or ASSE 1011 - Tee Will Supply Valved Wye and Soap Dispenser
BLDG. 160	ARMY	160-9R	High - Contaminant	Isolation	Both	Janitor's Closet #128	Install		Remove Valved Wye Connection From Hose Threads of Slop Sink and Install Water Wasting Tee	Install Required	Slop Sink - Supplies Soap Dispenser Through a Valved Wye Connection - No Valves Allowed Downstream of Vacuum Breaker ASSE 1001 or ASSE 1011 - Tee Will Supply Valved Wye and Soap Dispenser
BLDG. 160	ARMY	160-15R	High - Contaminant	Isolation	Backsiphonage	East Wall	AFHBVB	0.75	Install Anti-Frost Hose Bibb Vacuum Breaker (ASSE #1011, Watts NF8 or Equal)	Install Required	Outside Hose Bibb
BLDG. 180	DTOC	180-3R	High - Contaminant	Isolation	Both	Janitor's Room #164	Install		Remove Valved Wye Connection From Hose Threads of Slop Sink and Install Water Wasting Tee	Install Required	Slop Sink - Supplies Soap Dispenser Through a Valved Wye Connection - No Valves Allowed Downstream of Vacuum Breaker ASSE 1001 or ASSE 1011 - Tee Will Supply Valved Wye and Soap Dispenser
BLDG. 180	DTOC	180-6R	High - Contaminant	Isolation	Both	Janitor's Closet Across From Vending/Break Room	Install		Remove Valved Wye Connection From Hose Threads of Slop Sink and Install Water Wasting Tee	Install Required	Slop Sink - Supplies Soap Dispenser Through a Valved Wye Connection - No Valves Allowed Downstream of Vacuum Breaker ASSE 1001 or ASSE 1011 - Tee Will Supply Valved Wye and Soap Dispenser
BLDG. 180	DTOC	180-19R	Low - Pollution	Isolation	Both	Mechanical Room #114	Label		Label Piping Downstream of RP as "Non-Potable Water"	Other	Piping Downstream of Existing RP is Mislabeled as Domestic Cold Water" in Multiple Places
BLDG. 231	CHAPEL	231-3R	High - Contaminant	Isolation	Both	Janitor's Closet #115	Install		Remove Valved Wye Connection From Hose Threads of Slop Sink and Install Water Wasting Tee	Install Required	Slop Sink - Supplies Soap Dispenser Through a Valved Wye Connection - No Valves Allowed Downstream of Vacuum Breaker ASSE 1001 or ASSE 1011 - Tee Will Supply Valved Wye and Soap Dispenser
BLDG. 240	COMM	240-8R	High - Contaminant	Isolation	Both	1st floor Janitor's Closet	Install		Remove Valved Wye Connection From Hose Threads of Slop Sink and Install Water Wasting Tee	Install Required	Slop Sink - Supplies Soap Dispenser Through a Valved Wye Connection - No Valves Allowed Downstream of Vacuum Breaker ASSE 1001 or ASSE 1011 - Tee Will Supply Valved Wye and Soap Dispenser
BLDG. 240	COMM	240-13R	High - Contaminant	Isolation	Both	2nd floor Janitor's Closet	Install		Remove Valved Wye Connection From Hose Threads of Slop Sink and Install Water Wasting Tee	Install Required	Slop Sink - Supplies Soap Dispenser Through a Valved Wye Connection - No Valves Allowed Downstream of Vacuum Breaker ASSE 1001 or ASSE 1011 - Tee Will Supply Valved Wye and Soap Dispenser
BLDG. 300	SECURITY	300-8R	High - Contaminant	Isolation	Both	Janitor's Closet #151	Install		Remove Valved Wye Connection From Hose Threads of Slop Sink and Install Water Wasting Tee	Install Required	Slop Sink - Supplies Soap Dispenser Through a Valved Wye Connection - No Valves Allowed Downstream of Vacuum Breaker ASSE 1001 or ASSE 1011 - Tee Will Supply Valved Wye and Soap Dispenser
BLDG. 300	SECURITY	300-15R	High - Contaminant	Isolation	Both	Men's Restroom Janitor's Closet #133	Install		Remove Valved Wye Connection From Hose Threads of Slop Sink and Install Water Wasting Tee	Install Required	Slop Sink - Supplies Soap Dispenser Through a Valved Wye Connection - No Valves Allowed Downstream of Vacuum Breaker ASSE 1001 or ASSE 1011 - Tee Will Supply Valved Wye and Soap Dispenser
BLDG. 314	ALERT HANGER	314-1R	High - Contaminant	Isolation	Backsiphonage	Next to Eyewash	HBVB	0.75	Install Hose Bibb Vacuum Breaker (ASSE #1011)	Install Required	Each Side of Valved Wye Splitter on Hose Bibb - or Permanently Remove Valved Wye Splitter and Install Hose Bibb Vacuum Breaker (ASSE #1011) on Hose Bibb

Facility Number	Facility Name	Device Number	Hazard Level	Protection Type	Cross-Connection Type	Location	Device Type	Size	Recommendation	Equipment Status	Comments
BLDG. 315	ALERT HANGAR	315-2R	High - Contaminant	Isolation	Backsiphonage	Mechanical Room	HBVB	0.75	Install Hose Bibb Vacuum Breaker (ASSE #1011)	Install Required	Hose Bibb at Water Meter
BLDG. 315	ALERT HANGAR	315-5R	High - Contaminant	Isolation	Both	Janitor's Closet #105	Install		Remove Valved WYE Connection From Hose Threads of Slop Sink and Install Water Wasting Tee	Install Required	Slop Sink - Supplies Soap Dispenser Through a Valved Wye Connection - No Valves Allowed Downstream of Vacuum Breaker ASSE 1001 or ASSE 1011 - Tee Will Supply Valved Wye and Soap Dispenser
BLDG. 315	ALERT HANGAR	316-7R	High - Contaminant	Isolation	Backsiphonage	Hangar Outside of Room 109	AVB	0.5	Install Atmospheric Vacuum Breaker (ASSE #1001)	Install Required	Supply to Drain Flush - NOTE: Critical Level of Atmospheric Vacuum Breaker Must be Installed at Least 6" Above all Downstream Piping with NO Valves Downstream.
BLDG. 315	ALERT HANGAR	315-13R	High - Contaminant	Isolation	Backsiphonage	North Wall of Hangar	RP	2	Install Reduced Pressure Backflow Prevention Assembly (ASSE #1013)	Install Required	Supply to Fire Hose Connection - Replaces Inappropriate Existing Atmospheric Vacuum Breaker
BLDG. 315	ALERT HANGAR	315-14R	High - Contaminant	Isolation	Backsiphonage	South Wall of Hangar	RP	2	Install Reduced Pressure Backflow Prevention Assembly (ASSE #1013)	Install Required	Supply to Fire Hose Connection - Replaces Inappropriate Existing Atmospheric Vacuum Breaker
BLDG. 316	HEATING PLANT &	316-4R	High - Contaminant	Isolation	Backsiphonage	North East Corner of Boiler Room	HBVB	0.75	Install Hose Bibb Vacuum Breaker (ASSE #1011)	Install Required	Hose Bibb at North East Corner of Boiler Room
BLDG. 316	HEATING PLANT &	316-10R	Low - Pollution	Isolation	Backsiphonage	Trailer #316B	VMBP	0.375	Install Backflow Preventer for Beverage Dispensing Equipment (ASSE #1022)	Install Required	Supply to Coffee Pot - or Provide Documentation of Internal Approved Backflow Prevention
BLDG. 320	MUNITIONS ADMIN	320-7R	High - Contaminant	Isolation	Both	Drive Thru Maintenance Area	RP	0.75	Install Reduced Pressure Backflow Prevention Assembly (ASSE #1013)	Install Required	Supply to Hose Bibb Supplying Power Washer
BLDG. 320	MUNITIONS ADMIN	320-11R	High - Contaminant	Isolation	Both	Janitor's Closet	Install		Remove Valved Wye Connection From Hose Threads of Slop Sink and Install Water Wasting Tee	Install Required	Slop Sink - Supplies Soap Dispenser Through a Valved Wye Connection - No Valves Allowed Downstream of Vacuum Breaker ASSE 1001 or ASSE 1011 - Tee Will Supply Valved Wye and Soap Dispenser
BLDG. 410	CE	410-5R	High - Contaminant	Isolation	Both	Break Room #110	VMBP	0.375	Install Backflow Preventer for Beverage Dispensing Equipment (ASSE #1022)	Install Required	Coffee Pot - or Provide Documentation of Proper Internal Backflow Prevention
BLDG. 410	CE	410-6E	High - Contaminant	Isolation	Both	Janitor's Closet #108	AVB	0.5	Remove Valved Wye Connection From Hose Threads of Slop Sink and Install Water Wasting Tee	Install Required	Slop Sink - Supplies Soap Dispenser Through a Valved Wye Connection - No Valves Allowed Downstream of Vacuum Breaker ASSE 1001 or ASSE 1011 - Tee Will Supply Valved Wye and Soap Dispenser
BLDG. 410	CE	410-8R	High - Contaminant	Isolation	Both	Janitor's Closet #108	Install		Remove Valved Wye Connection From Hose Threads of Slop Sink and Install Water Wasting Tee	Install Required	Slop Sink - Supplies Soap Dispenser Through a Valved Wye Connection - No Valves Allowed Downstream of Vacuum Breaker ASSE 1001 or ASSE 1011 - Tee Will Supply Valved Wye and Soap Dispenser
BLDG. 410	CE	410-9R	High - Contaminant	Isolation	Backsiphonage	Garage	HBVB	0.75	Install Hose Bibb Vacuum Breaker (ASSE #1011)	Install Required	Hose Bibb at Water Meter
BLDG. 410	CE	410-10R	High - Contaminant	Isolation	Backsiphonage	Garage	HBVB	0.75	Install Hose Bibb Vacuum Breaker (ASSE #1011)	Install Required	Hose Bibb at Water Meter
BLDG. 430	RPA/ISRG	430-12R	High - Contaminant	Isolation	Both	Janitor's Closet #1032	Install		Remove Valved Wye Connection From Hose Threads of Slop Sink and Install Water Wasting Tee	Install Required	Slop Sink - Supplies Soap Dispenser Through a Valved Wye Connection - No Valves Allowed Downstream of Vacuum Breaker ASSE 1001 or ASSE 1011 - Tee Will Supply Valved Wye and Soap Dispenser
BLDG. 430	RPA/ISRG	430-16R	High - Contaminant	Isolation	Both	Janitor's Closet #2002	Install		Remove Valved Wye Connection From Hose Threads of Slop Sink and Install Water Wasting Tee	Install Required	Slop Sink - Supplies Soap Dispenser Through a Valved Wye Connection - No Valves Allowed Downstream of Vacuum Breaker ASSE 1001 or ASSE 1011 - Tee Will Supply Valved Wye and Soap Dispenser
BLDG. 440	LRS	440-30R	High - Contaminant	Isolation	Both	Janitor's Closet #138	Install		Remove Valved Wye Connection From Hose Threads of Slop Sink and Install Water Wasting Tee	Install Required	Slop Sink - Supplies Soap Dispenser Through a Valved Wye Connection - No Valves Allowed Downstream of Vacuum Breaker ASSE 1001 or ASSE 1011 - Tee Will Supply Valved Wye and Soap Dispenser

2.3.1 BLDG. 100 - Wing

Location:	Pump Room #148		
Existing ID #:	100-12R	BFP Type:	RP
Manufacturer:		Model:	
Size:	8"	Serial #:	
Hazard Level:	High	CC Type:	Both
Equipment Status:	Install Required	Protection Type:	Containment
Recommendation:	Install Reduced Pressure Backflow Prevention Assembly (ASSE #1013)		
Comments:	Supply to Fire Protection system in Pump Room #148 - Replaces Inappropriate Existing DCV Due to Foam System		



2.3.2 BLDG. 125 – Civil Air Patrol

Location:	Boiler Room #109A			Location:	Pump Room #101		
Existing ID #:	125-3R	BFP Type:	RP	Existing ID #:	125-8R	BFP Type:	RP
Manufacturer:		Model:		Manufacturer:		Model:	
Size:	.75"	Serial #:		Size:	6"	Serial:	
Hazard Level:	High	CC Type:	Both	Hazard Level:	High	CC Type:	Both
Equipment Status:	Install Required	Protection Type:	Isolation	Equipment Status:	Repair/Replace	Protection Type:	Containment
Recommendation:	Install Reduced Pressure Backflow Prevention Assembly (ASSE #1013)			Recommendation:	Replace Existing Inappropriate DCV (#1015) with RPBP (ASSE #1013) Due to Foam Fire Protection System		
Comments:	Supply to Compressed Air Piping			Comments:	Fire Protection System - or Disconnect Chemical Foam Tanks (Tanks are Empty and Not in Use)		



2.3.3 BLDG. 315 – Alert Hangar

Location:	North Wall of Hangar			Location:	South Wall of Hangar		
Existing ID #:	315-13R	BFP Type:	RP	Existing ID #:	315-14R	BFP Type:	RP
Manufacturer:		Model:		Manufacturer:		Model:	
Size:	2"	Serial #:		Size:	2"	Serial:	
Hazard Level:	High	CC Type:	Both	Hazard Level:	High	CC Type:	Both
Equipment Status:	Install Required	Protection Type:	Isolation	Equipment Status:	Install Required	Protection Type:	Isolation
Recommendation:	Install Reduced Pressure Backflow Prevention Assembly (ASSE #1013)			Recommendation:	Install Reduced Pressure Backflow Prevention Assembly (ASSE #1013)		
Comments:	Supply to Fire Hose Connection - Replaces Inappropriate Existing Atmospheric Vacuum Breaker			Comments:	Supply to Fire Hose Connection - Replaces Inappropriate Existing Atmospheric Vacuum Breaker		



3.0 RECOMMENDATIONS

The recommendations listed below may require additional analysis if selected for implementation. HydroCorp is available to discuss in detail, any alternative that may be considered for possible implementation.

1. **Implement a program to address remaining unprotected cross connections.** To comply with AFI 32-1067 guidelines, State and Local Codes, it is recommended that backflow prevention devices and assemblies be installed at the isolation level. HydroCorp recommends that steps be taken to conform to all applicable Codes. Backflow prevention devices required for installation are outlined in Recommended Corrective Actions, Section 2.3, of this report.

To ensure proper installation and operation, only certified individuals should complete installation and testing of backflow prevention assemblies. RP's, PVB's, SVB's, and DCV's must be tested **immediately** upon installation. Assemblies must be properly tagged, and the appropriate test forms completed.

2. **Continue with the on-going program.** Responsibilities should be determined and delegated to ensure that 1) the recommendations are implemented, 2) that all testable backflow prevention assemblies are properly tested as required, and 3) that the Backflow Prevention and Cross Connection Control Program is maintained on an on-going basis.

4.0 SUMMARY AND CERTIFICATION STATEMENT

SUMMARY

This report is a continuing step in the maintenance requirements of an ongoing Cross Connection Control program. Isolation and containment hazards have been addressed by this report. Containment protects the base potable water distribution system from hazards inside specific facilities, and isolation protection will protect personnel assigned to those facilities. The isolation issues should be addressed. An on-going organized program is needed to maintain a safe potable water system, and to protect individuals from possible water supply contamination.

CERTIFICATION STATEMENT

We certify that the data contained herein is factual. Any recommendations made are based upon our experience with Cross Connection Control* and our interpretation of the following as they apply to the individual circumstances:

Air Force Instruction 32-1067
LAC Title 51, Part XII
International Plumbing Code
American Water Works Association M-14 Manual
Unified Facilities Criteria 3-601-02

David C. Cardinal, Vice President
HydroCorp

*To HydroCorp's knowledge, the information presented here is complete and accurate. Due to the inaccessible nature of the piping, 100% accurate data is not always available. To properly complete this project, HydroCorp has attempted to obtain complete and accurate data through field review and personnel interviews.

5.0 SUGGESTED ACTION PLAN

The following suggested action plan is not all inclusive of steps required for implementing and maintaining a Cross Connection Control program. The suggested action plan may be used as a starting point, and should be further developed to ensure all requirements for protection of the potable water distribution system are met, and that a complete on-going Cross Connection Control program is developed and/or maintained.

1. Base Personnel must determine and verify final recommendations and action plan.
2. Develop schedule and delegate responsibilities.
3. Conduct research, including flow analysis where needed, to determine final recommendations and requirements.
4. Obtain the appropriate devices to be installed for isolation protection at unprotected locations.
5. Have required isolation devices installed at all unprotected locations.
6. Test all newly installed devices that require testing.
7. Maintain an annual testing and maintenance program for backflow prevention devices.
8. Maintain a survey schedule ensuring all facilities are surveyed at a minimum once every five years.

APPENDIX A

A.1 GENERAL INFORMATION - PROGRAM IMPLEMENTATION

Pressure Loss

Pressure loss is inherent in the design of all backflow prevention devices. Prior to installation of any backflow prevention device, the water volume and pressures required to properly operate a system should be analyzed to ensure that problems would not be incurred from the installation of backflow prevention devices.

Thermal Expansion

Installation of backflow prevention devices may prevent release of increased pressure due to thermal expansion. It is important that temperature/pressure relief valves, expansion tanks, or other equipment be properly installed, and/or accommodations made where required, to relieve any increases in pressure within the piping system.

Installation Configuration - Assembly Valve Location

Shut off valves immediately adjacent to Reduced Pressure, Double Check, and Pressure Vacuum Breaker Devices are required as part of the assembly. Shut off valves are not to be placed downstream of Atmospheric or Hose Bibb type vacuum breakers. All manufacturer and authority rules regarding proper installation of devices must be followed to ensure proper operation.

Tester Qualifications

Backflow prevention assembly testers must have attended and passed an approved tester course for his/her geographic area of operations. All testers should have applied to, and be recognized by, the state and/or local authority. State and local codes may also dictate other tester qualifications.

Testing/Repair Requirements

Assembly testing certifies that a backflow prevention assembly is functioning properly. Testing is required immediately after installation, after repair or relocation and at a minimum, on a yearly basis thereafter.

Pipe Labeling and Identification

All piping and outlets downstream of any isolation backflow prevention device must be appropriately labeled. Any water outlets downstream of a device must be identified to prevent individuals from using it as a potable source. Most plumbing codes and OSHA 1910.141 requires labeling of all piping systems to minimize the potential for backflow or backsiphonage into the potable water system.

Critical Water Supplies

Normal backflow prevention assembly testing and repair work will require an interruption in the supply of water from the device. Where the water supply through a given device is critical to a facility or a process operation, it is recommended that devices be installed in a parallel configuration. Parallel installations will allow the continued flow of water to equipment during testing and/or repairs to one of the devices.

Strainers

Incoming water may possess debris or other foreign matter. Foreign matter may foul internal components of backflow prevention devices resulting in leaking and/or failure. It may be beneficial to install a strainer prior to devices to decrease the likelihood of failure. Note that the strainer causes additional pressure loss and will require regular maintenance. To complete maintenance, an additional valve prior to the strainer and a blow off port may be needed. Since a blow off port offers another cross connection hazard, proper precautions must be taken.

Device Spitting

Spitting may occur on reduced pressure backflow preventers, pressure vacuum breakers and other devices with openings to the atmosphere. Devices must be installed so that spitting will not cause a hazard or damage to the facility. If spitting occurs, consult manufacturers troubleshooting procedures to try to determine cause.

Draining/Dumping

Drain piping and a funnel should be attached to the relief ports of reduced pressure backflow preventers. The drains must be appropriately sized to handle maximum flow. Drain outlets should be routed as required and as dictated by code. Devices should not be installed where excessive drainage or splashing will cause damage and/or a hazard.

Device Locations

Devices are not to be installed in areas where they will be subjected to freezing or flooding, unless specifically accepted by code and manufacturer specification. Backflow prevention devices should never be installed over or near electrical panels, motors etc. All devices must be provided ready access for testing and maintenance.

Fire Systems

Device installations and system alterations must be in accordance with applicable codes. O, S & Y gate valves must be used unless specifically accepted by code as otherwise. All fire system alterations must be reviewed and analyzed to ensure proper performance.

A.2 REPORT INFORMATION

A.2.1 DEVICE LEGENDS/ABBREVIATIONS

HYDRO CORP DEVICE LEGEND/ABBREVIATIONS			
Acronym	Legend	A.S.S.E. Standard	Testable Device
AFHBVB	Anti-Frost Hose Bibb Vacuum Breaker	1019/1011	No
AG	Air Gap	NA	No
AGD	Air Gap Device	NA	No
ASBC	Anti-Siphon Ball Cock	1002	No
AVB	Atmospheric Vacuum Breaker	1001	No
CAP	Device and/or piping requires a cap	NA	NA
DC	Dual Check	1024	No
DCV	Double Check Valve Assembly	1015	Yes
DCDA	Double Check Detector Assembly	1048	Yes
ET	Expansion Tank	NA	NA
FAUCET	Faucet	NA	NA
FVB	Fixture Vacuum Breaker	1001	No
HA	Hammer Arrester	1010	NA
HB	Hose Bibb	NA	NA
HBIVB	Hose Bibb w/Integrated Vacuum Breaker	1011	No
HBVB	Hose Bibb Vacuum Breaker	1011	No
HCBP	Hose Connection Backflow Preventer	1052	Yes
LABEL	Pipe requires labeling	NA	NA
LFDC	Lab Faucet Dual Check	NA	No
LFVB	Lab Faucet Vacuum Breaker	1035	No
PLUG	Device and/or piping requires a plug	NA	NA
PVB	Pressure Vacuum Breaker	1020	Yes
REMOVE	Device removal required	NA	NA
REPAIR	Device is in need of repair	NA	NA
REPLACE	Requires replacement	NA	NA
REPLUMB	Requires relocation and/or new piping	NA	NA
RP	Reduced Pressure Backflow Preventer Assembly	1013	Yes
RPDA	Reduced Pressure Detector Assembly	1047	Yes
SC	Single Check Valve	NA	No
SVB	Spill Resistant Vacuum Breaker	1056	Yes
VDCV	Vented Dual Check Valve	1012	No
VMBP	Vending Machine Backflow Preventer	1022	No
ABBREVIATIONS LEGEND			
ILGBLE	Illegible		
INACC	Inaccessible		
NA	Not Available		
OTHER	Other (Not a typical manufacturer)		

A.2.1.2 CCC SURVEY RESULTS LIST INFORMATION

Section 2.1 of the report list all existing backflow prevention devices and required corrective actions identified during the survey. See Section 8.0 for a listing of only testable backflow prevention devices. Various fields in the tables include the following information:

HEADING

FIELD INFORMATION

FACILITY NUMBER:

Column notes the building number in which the existing device is found.

FACILITY NAME:

Column notes the building name and/or occupant according to records provided.

DEVICE NUMBER:

Column notes the ID# HydroCorp assigned to an Existing Backflow Prevention Method or Required Corrective Action. These numbers are populated in the order the cross connection/method was discovered beginning with 1. Existing Methods are annotated with the letter "E", Corrective Actions are annotated with the letter "R" (i.e. 1R, 2E, etc....)

HAZARD LEVEL:

Column notes the degree of hazard assigned to the cross connection. High-Contaminant indicates a Health Hazard. Low-Pollution indicates a non-health hazard.

PROTECTION TYPE:

Column notes the type of existing and/or required protection required. "Isolation" refers to point of use, or fixture protection and "Containment" refers to service line protection.

CROSS CONNECTION TYPE:

Column notes the type of cross connection/potential backflow. Backsiphonage is a means of backflow created by a drop in atmospheric pressure in a piping system. Backpressure is a means of backflow created by downstream pressure becoming greater than supply pressure. "Both" would indicate the cross connection is subject to both backpressure and backsiphonage.

LOCATION:

Column notes the location within the building or on the property where the cross connection exists.

DEVICE TYPE:

Column notes the type of existing or required backflow prevention method for a cross connection.

MANUFACTURER:

Column notes the manufacturer of an existing backflow prevention device/assembly for a cross connection.

MODEL:

Column notes the manufacturers' model number of an existing backflow prevention device/assembly.

SIZE:

Column notes the size of the supply pipe to associated with the cross connection.

SERIAL NUMBER:

Column notes the serial number of an existing backflow prevention device/assembly

RECOMMENDATION:

Column notes the type of required corrective action for an existing unprotected cross connection.

STATUS:

Column notes the status of a particular cross connection.

COMMENTS:

Column notes a description of the location of an existing backflow prevention method and/or a unprotected cross connection that requires corrective action.