

**Exhibit C Drawings**

DAS TH Carriage House Exterior Stair Replacement  
Terrace Hill  
Request for Quote RFQ940700-01

**Due Thursday, October 3<sup>rd</sup>, 2024, at 2:00 PM (CT)**

# IOWA DEPARTMENT OF ADMINISTRATIVE SERVICES

## DAS TH CARRIAGE HOUSE EXTERIOR STAIR REPLACEMENT

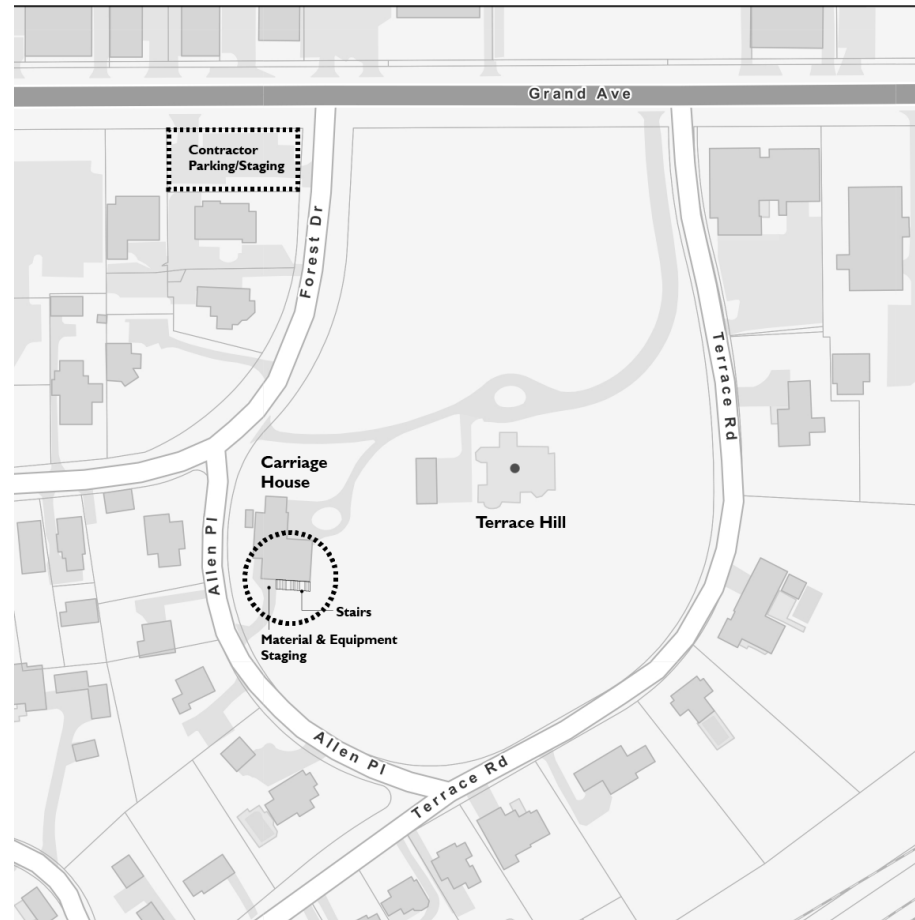
PROJECT # 9407.00



### CONSTRUCTION DOCUMENTS

08/27/2024

PROJECT LOCATION



SITE DIAGRAM



MASTER SHEET LIST	
Sheet Number	Sheet Name
GENERAL	
G0.00	COVER
G0.01	ABBREVIATIONS, SYMBOLS, MATERIALS AND STANDARDS
CIVIL	
C0.00	EXISTING CONDITIONS
C0.01	REMOVALS PLAN
C1.01	SITE PLAN
C2.01	GRADING PLAN
C3.01	EROSION PLAN
C4.01	DETAILS
C4.02	DETAILS
ARCHITECTURAL	
AI.01	ARCHITECTURAL - WATERPROOFING

**PROJECT DESCRIPTION:**

REMOVAL AND REPLACEMENT OF DETERIORATED TREATED WOOD AND BRICK STAIRS ADJACENT TO EXISTING CARRIAGE HOUSE ON THE TERRACE HILL GROUNDS IN DES MOINES, IA. SCOPE OF WORK TO INCLUDE:

- SURVEY WORK REQUIRED FOR COMPLETION OF PROJECT.
- COORDINATION WITH STATE HISTORICAL PRESERVATION OFFICE ON PROPOSED REPAIR AND MATERIALS.
- DESIGN FOR REMOVAL OF STAIRS, INCLUDING SALVAGE OF EXISTING BRICK FOR TURNOVER TO TERRACE HILL.
- DESIGN OF NEW CAST IN PLACE CONCRETE STAIRS WITH NEW HANDRAIL AND LIGHTING.
  1. SCOPE OF WORK TO BE INSTALLATION OF 3 NEW LIGHT FIXTURES BY CERTIFIED ELECTRICIAN, AS SHOWN ON CIVIL DRAWINGS.
  2. CONNECT NEW BOLLARD LIGHTING CIRCUIT TO EXISTING RECEPTACLE CIRCUIT USING #10 CONDUCTORS IN 3/4" CONDUIT. EXPOSED PORTIONS OF CONDUIT SHALL BE IMC. UNDERGROUND AND CONCEALED PORTIONS OF CONDUIT MAY BE PVC.
  3. BOLLARD ANCHORED TO CONCRETE BASE. CONTRACTOR TO PROVIDE THE ANCHORAGE KIT AS REQUIRED FOR INTENDED INSTALLATION.
  4. CONTRACTOR TO CONFIRM POWER CAPACITY FOR NEW FIXTURES.
- THIS IS NOT A PUBLIC USE STAIR. HANDRAIL ON ONLY ONE SIDE IS REQUIRED.
- SITE RESTORATION INCLUDING LANDSCAPE.
- WATERPROOFING REPAIR ADJACENT TO STAIR ON SOUTH FACE OF EXISTING CARRIAGE HOUSE BUILDING.

**ARCHITECT**

LICENSED PROFESSIONAL ARCHITECT

Melinda Aust  
05898

IOWA

I hereby certify that the portion of this technical submission described below was prepared by me or under my direct supervision and responsible charge. I am a duly licensed architect under the laws of the State of Iowa.

Melinda Aust (Printed or Type Name) 05898 (License Num.)

*Melinda Aust* (Signature) 08/27/2024

Sheets covered by this seal A-Sheets

My license renewal date is June 30, 2024

**LANDSCAPE**

PROFESSIONAL LANDSCAPE ARCHITECT

SAMUEL J. KESSEL, PLA  
00607

IOWA

I HEREBY CERTIFY THAT THE PORTION OF THIS TECHNICAL SUBMISSION DESCRIBED BELOW WAS PREPARED BY ME OR UNDER MY DIRECT SUPERVISION AND RESPONSIBLE CHARGE. I AM A DULY LICENSED PROFESSIONAL LANDSCAPE ARCHITECT UNDER THE LAWS OF THE STATE OF IOWA.

SAMUEL J. KESSEL, PLA

REG. NO. 00607 DATE: 08-27-24

MY LICENSE RENEWAL DATE IS JUNE 30, 2025

PAGES OR SHEETS COVERED BY THIS SEAL:

ALL C-SHEETS

ABBREVIATIONS

A
@ AT
AV AUDIO-VISUAL
ABV ABOVE
ACC ACCESSIBLE
ACS DR ACCESS DOOR
ACT ACUSTICAL CEILING TILE
ADA AMERICANS WITH DISABILITIES ACT
ADJ ADJUSTABLE
AFC ABOVE FINISHED COUNTER
AFF ABOVE FINISHED FLOOR
AHJ AUTHORITY HAVING JURISDICTION
AL ALUMINUM
ALT ALTERNATE
ALUM ALUMINUM
APC ACUSTICAL PANEL CEILING
APPROX APPROXIMATELY
ARCH ARCHITECT
AWP ACUSTICAL WALL PANEL

B

BC BY CONTRACTOR
BOCR BACKER
BCS BABY CHANGING STATION
BD BOARD
BLDG BUILDING
BLDG HD BLDG HEAD
BLW BELOW
BM BENCHMARK
BO BOTTOM OF
BOS BOTTOM OF STRUCTURE
BOT BOTTOM
BS BOTH SIDES
BTW BETWEEN

C

CAB CABINET
CBB CEMENTITIOUS BACKER BOARD
CFRI CONTRACTOR FURNISHED, OWNER INSTALLED
CG CORNER GUARD
CH COAT HOOK
CP CAST-IN-PLACE
CJ CONTROL JOINT
CL CENTERLINE
CLG CEILING
CLR CLEAR
CMU CONCRETE MASONRY UNIT
CNTR COUNTERTOP
COL COLUMN
CONC CONCRETE
CONT CONTINUE (CONTINUOUS)
CONTR CONTRACTOR
COORD COORDINATE
COV COVER
CR CARD READER
CSWK CASEWORK
CT CERAMIC TILE
CTR CENTER
CUH CABINET UNIT HEATER
CV CURTAIN WALL

D

DBL DOUBLE
DC DIMMER CONTROL
DEMO DEMOLITION (DEMOLISH)
DET DETAIL
DF DRINKING FOUNTAIN
DIA DIAMETER
DIM(S) DIMENSION(S)
DO DOOR OPENING
DPTN DEMOUNTABLE PARTITION
DR DOOR
DS DOWNSPOUT
DSPL DISPOSAL
DT DRAIN TILE
DV DATA / VOICE OUTLET
DW DISHWASHER
DWG(S) DRAWING(S)
DWR DRAWER

E

E ELECTRICAL OUTLET
EA EACH
EJ EXPANSION JOINT
EL ELEVATION
ELEC ELECTRIC (ELECTRICAL)
ELEV ELEVATOR
EMER EMERGENCY
ENCL ENCLOSURE
ENGR ENGINEER
EOS EDGE OF SLAB
EPS EXPANDED POLYSTYRENE BOARD
EQ EQUAL
EQUIP EQUIPMENT
EQUIV EQUIVALENT
ETC ET CETERA
EW EACH WAY
EWS EYE WASH STATION
EXCL EXCLUDE (EXCLUDING)
EXP EXPANSION
EXST EXISTING
EXT EXTERIOR

ABBREVIATIONS

F
F FEMALE
FA FIRE ALARM HORN / STROBE
FAFP FIRE ALARM ANNUNCIATOR PANEL
FAB FABRIC
FACP FIRE ALARM CONTROL PANEL
FAS FIRE ALARM PULL STATION
FCC FLOOR CLEANOUT
FD FLOOR DRAIN
FDTN FOUNDATION
FE FIRE EXTINGUISHER
FEC FIRE EXTINGUISHER CABINET
FIN FINISH
FIXT FIXTURE
FLASH FLASHING
FLDG FOLDING
FLX FLEXIBLE
FLG FLOORING
FLMT FLOOR MOUNT
FLR FLOOR
FO FACE OF
FOC FACE OF CONCRETE
FOF FACE OF FINISH
FOW FACE OF WALL
FR FRAME(D)
FR GL FRITTED GLASS
FRP FIBER-REINFORCED PLASTIC
FRZ FREEZER
FT FOOT (FEET)
FT QL FULLY TEMPERED GLASS
FTG FOOTING
FURN FURNITURE
FUT FUTURE
FWRK FORMWORK

G

GA GAGE
GALV GALVANIZED
GB GRAB BAR
GC GENERAL CONTRACTOR
GRC GLASS-FIBER REINFORCED CONCRETE
GL GLASS
GLZ GLAZING
GRAN GRANITE
GRID GRIDLINE
GRTG GRATING
GSB GYPSUM SHEATHING BOARD
GYP GYPSUM

H

HB HOSE BIB
HC HANDICAP
HD HAND DRYER
HDR HEADER
HDW HARDWARE
HDWD HARDWOOD
HM HOLLOW METAL
HNDRL HANDRAIL
HO HOLD OPEN
HORIZ HORIZONTAL
HPC HIGH PERFORMANCE COATING
HS HAND SINK
HT HEIGHT
HVAC HEATING, VENTILATING, AND AIR CONDITIONING

I

IIC IMPACT ISOLATION CLASS
ILLUM ILLUMINATION
INCL INCLUDE (INCLUDING)
INFO INFORMATION
INSUL INSULATION
INT INTERIOR
IT(S) INFORMATION TECHNOLOGY (SERVICES)

J

JAN JANITOR
JT JOINT

K

KB KNOX BOX
KPT KICKPLATE

L

LAM LAMINATE (LAMINATED)
LAV LAVATORY
LD LINEAR DIFFUSER
LH LEFT HAND
LIN LINEAR
LINO LINOLEUM
LKR LOCKER
LNSCP LANDSCAPE
LOC LOCATION
LT LIGHT
LTD LIMITED
LTG LIGHTING
LVR LOUVER
LVC LIGHT-WEIGHT CONCRETE
LYR LAYER

ABBREVIATIONS

M
M MOTION SENSOR
MAINT MAINTENANCE
MATL MATERIAL
MAX MAXIMUM
MBH MOP / BROOM HOLDER
MECH MECHANICAL
MEL MELAMINE
MEMB MEMBRANE
MF MILL FINISH
MFD MANUFACTURED
MFR MANUFACTURER
MIN MINIMUM
MR MIRROR
MSC MISCELLANEOUS
MLWK MILLWORK
MR MOISTURE RESISTANT
MT MOUNT
MTD MOUNTED
MTL METAL
MULL MULLION
MULT MULTIPLE
MW MICROWAVE

N

NA NOT AFFICABLE
NC NOT IN CONTRACT
NO NUMBER
NOM NOMINAL
NORM NORMAL
NRC NOISE REDUCTION COEFF. NOT TO SCALE
NTS

O

OC ON CENTER
OD OUTSIDE DIAMETER
OFCI OWNER FURNISHED, CONTRACTOR INSTALLED
OH OVER-HEAD
OPNG OPENING
OPP OPPOSITE
OPR OPERABLE
ORIG ORIGINAL
ORN ORNAMENTAL
OVL OVERFLOW

P

PAR PARALLEL
PART PARTIAL
PAT PATTERN
PB PUSH BUTTON
PBD PARTICLEBOARD
PERF PERFORATED
PERIM PERIMETER
PERM PERMANENT
PLAM PLASTIC LAMINATE
PLBG PLUMBING
PLYVD PLYWOOD
PNL PANEL
PNT PAINT
POL POLISHED
PORC PORCELAIN
PREFAB PREFABRICATE
PREFIN PREFINISHED
PREFID PREFORMED
PRELIM PRELIMINARY
PS PROJECTOR SCREEN CTRL POST-TENSIONED
PTD PAPER TOWEL DISPENSER
PTN PARTITION
PTR PAPER TOWEL RECEPTACLE
PV PHOTOVOLTAIC

Q

QT QUARRY TILE
QTR QUARTER
QTY QUANTITY
QTZ QUARTZ

R

R RADIUS
RA RETURN AIR
RAD RADIATOR
RB RESILIENT BASE
RB-HK ROBE HOOK
RBR RUBBER
RCP REFLECTED CEILING PLAN
RD ROOF DRAIN
REC RECEPTACLE
RECF RECEPTACLE
REF REFRIGERATOR
REINFB REINFORCE(D)
REH REHANDER
REP REPAIR
REPL REPLACE
REQD REQUIRED
RESIL RESILIENT
REST RESTROOM
RFG ROOFING
RH RIGHT HAND
RM ROOM
RND ROUND
RO ROUGH OPENING
RTF RUBBER TILE FLOORING
RTG RATING (RATED)

ABBREVIATIONS

RTU ROOFTOP UNIT
RVL REVEAL

S

S SWITCH
SA SUPPLY AIR
SALV SALVAGE
SAMP SAMPLE
SAN SANITARY
SAN SEATED CONCRETE
SCD SEAT COVER DISPENSER
SCH-ED SCHEDULE
SCRN SCREEN
SD SOAP DISPENSER
SD SMOKE DETECTOR
SECT SECTION
SF SQUARE FOOT (FEET)
SFTWD SOFTWOOD
SGL SINGLE
SHLF SHELF
SHR SHOWER
SHR HD SHOWER-HEAD
SHT SHEET
SHV SHELVING
SIM SIMILAR
SLNT SEALANT
SLV SLEEVE
SN SANITARY NAPKIN DISPOSAL
SNK SINK
SNR SENSOR
SP STANDPIPE
SPKLR SPRINKLER
SPQR SPEAKER
SQ SQUARE
SS STAINLESS STEEL
STC SOUND TRANSMISSION CLASS
STD STANDARD
STL STEEL
STOR STORAGE
STRUCT STRUCTURAL
SUPT SUPPORT
SURF SURFACE
SURR SURROUND
SURV SURVEY
SUSP SUSPEND (SUSPENDED)
SYMM SYMMETRICAL
SYNTH SYNTHETIC
SYS SYSTEM

T

T THERMOSTAT
T&G TONGUE AND GROOVE
TB TOWEL BAR
TC TERRAZZOTA
TD TRENCH DRAIN
TEMP TEMPORARY
TERM TERMINATION
THK THICKNESS
THRS THRESHOLD
TKSF TACK-SURFACE / TACK-BOARD
TO TOP OF
TOS TOP OF SLAB
TOW TOP OF WALL
TRTD TREATED
TT TOILET TISSUE DISPENSER
TV TELEVISION
TYP TYPICAL
TZ TERRAZZO

U

UNO UNLESS NOTED OTHERWISE
UR URINAL
URS URINAL SCREEN

V

VAR VARIES
VB VINYL BASE
VEH VEHICLE
VERT VERTICAL
VEST VESTIBULE
VF VERIFY IN FIELD
VN VENDING MACHINE
VNR VENEER
VOC VOLATILE ORGANIC COMPOUND

W

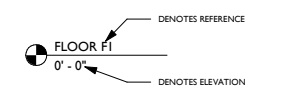
W WITH
W/O WITHOUT
W/B WOOD BASE
WBL WOOD BLOCKING
WC WATER CLOSET
WCO WALL CLEANOUT
WD WOOD
WH WATER HEATER
WLD WELDED
W/O WINDOW OPENING
WT WEIGHT
WW WALL TO WALL

X

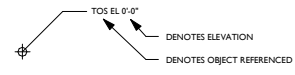
XPS EXTRUDED POLYSTYRENE BOARD

Y

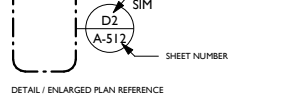
YCO YARD CLEANOUT



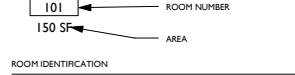
VERTICAL ELEVATION



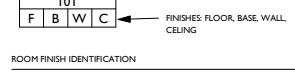
SPOT ELEVATION



DETAIL / ENLARGED PLAN REFERENCE



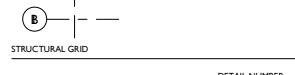
ROOM IDENTIFICATION



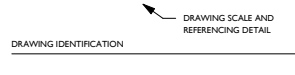
ROOM FINISH IDENTIFICATION



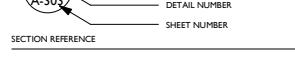
GLAZING / WINDOW IDENTIFICATION



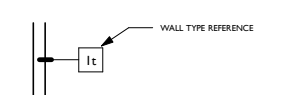
STRUCTURAL GRID



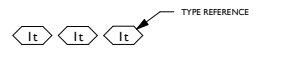
DRAWING IDENTIFICATION



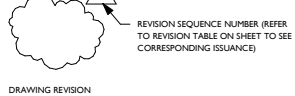
SECTION REFERENCE



WALL TYPE IDENTIFICATION



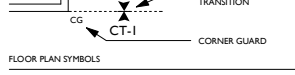
MILLWORK / FURNITURE / EQUIPMENT IDENTIFICATION



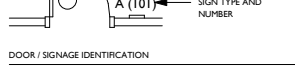
DRAWING REVISION



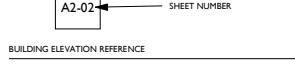
PLAN NORTH REFERENCE



FLOOR PLAN SYMBOLS



DOOR / SIGNAGE IDENTIFICATION



BUILDING ELEVATION REFERENCE



INTERIOR ELEVATION REFERENCE



KEYNOTE IDENTIFICATION

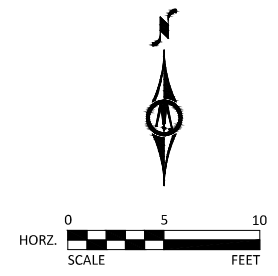
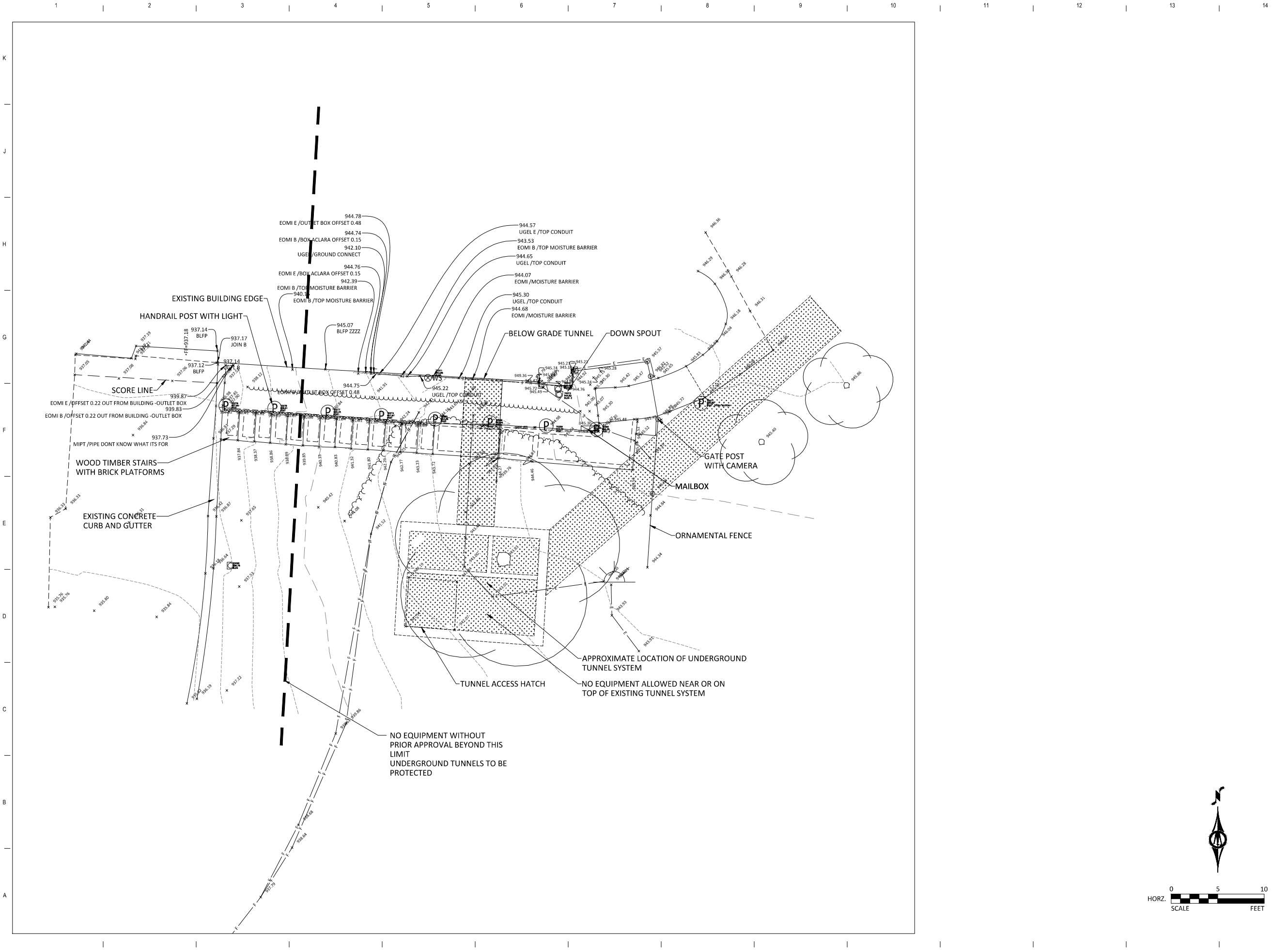
Table with 2 columns: Material/Symbol and Description. Includes Aluminum, Batts Insulation, Brick & Clay Masonry, Ceramic Tile, Concrete Unit Masonry, Compacted or Engineered Fill, Concrete, Continuous Blocking, Discontinuous Blocking, Earth, Glazing, Gypsum Wall Board, Rigid Insulation, Sand, Sheathing, Spray Insulation, Steel, Wood - Finish Grade.

MA Architecture logo and contact information: 1201 KEOSAUQUA WAY, SUITE 101, DES MOINES, IA 50309, Ph: 515 473 4834. Also includes Civil / Landscape and Bolton & Menk information.

IOWA DEPARTMENT OF ADMINISTRATIVE SERVICES
DAS TH CARRIAGE HOUSE EXTERIOR STAIR REPLACEMENT
2300 GRAND AVE, DES MOINES, IA 50312
CONSTRUCTION DOCUMENTS

Table with 3 columns: Revisions Mark, Description, Date. Includes MA Architecture No. 073.24, Date: 08/27/2024.

ABBREVIATIONS, SYMBOLS, MATERIALS AND STANDARDS



ARCHITECT  
**MA ARCHITECTURE**  
 1201 KEOSAUQUA WAY, SUITE 101  
 DES MOINES, IA 50309  
 Ph. 515 473 4834

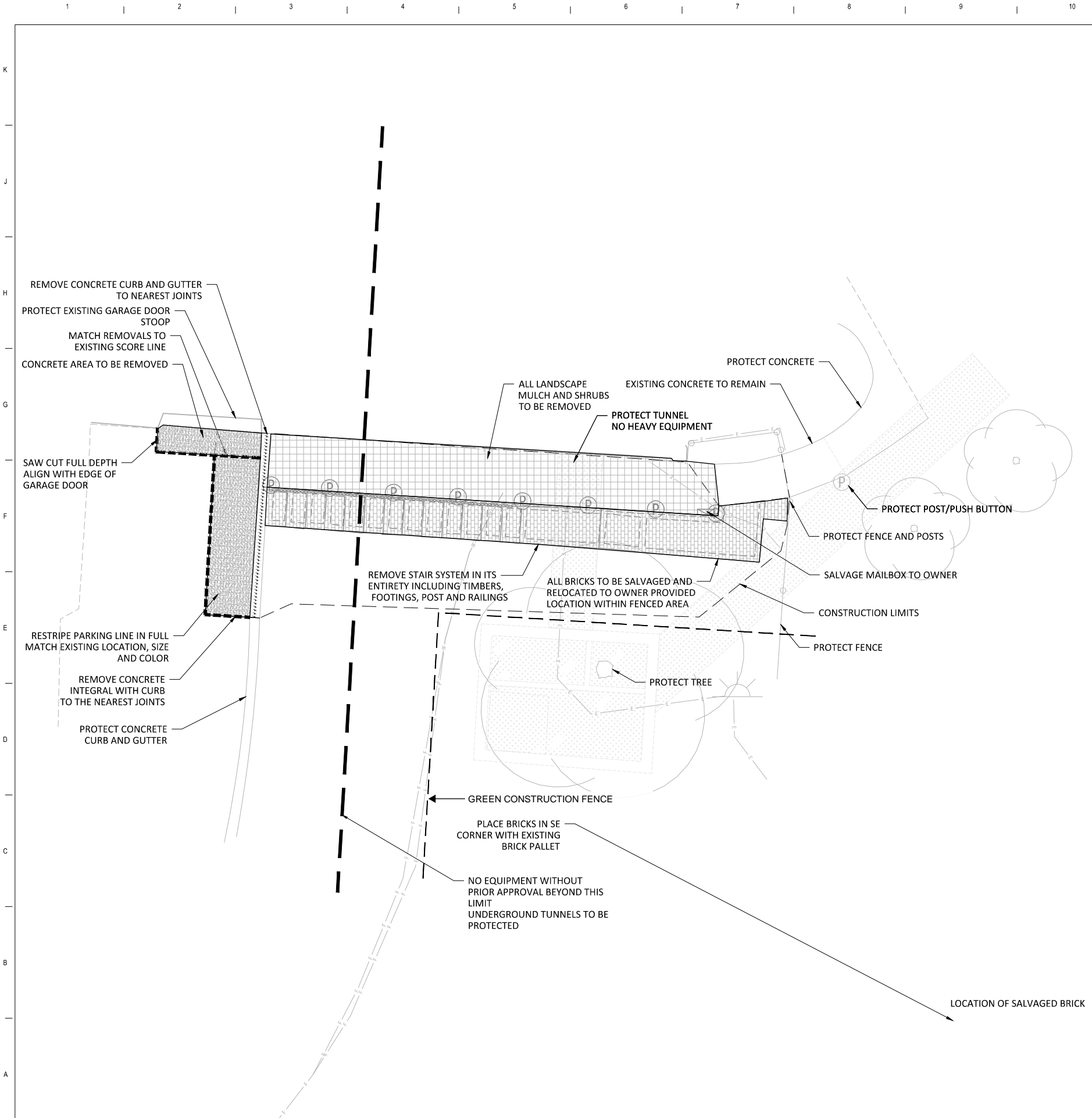
CIVIL / LANDSCAPE  
**BOLTON & MENK**  
 430 E GRANDE AVE #101  
 DES MOINES, IA 50309  
 Ph. 515 259 9190

**IOWA DEPARTMENT OF ADMINISTRATIVE SERVICES**  
**DAS TH CARRIAGE HOUSE EXTERIOR STAIR REPLACEMENT**  
 2300 GRAND AVE, DES MOINES, IA 50312

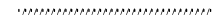

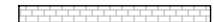
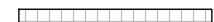


**CONSTRUCTION DOCUMENTS**

MA Architecture 073.24  
 No.:  
 Date: 08/27/2024  
 Revisions  
 MARK DESCRIPTION DATE

EXISTING  
 CONDITIONS  
**C0.00**

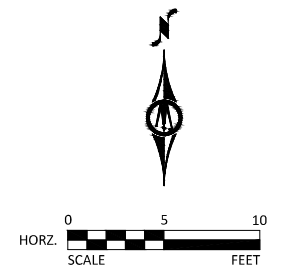


### LEGEND

-  CONCRETE CURB AND GUTTER REMOVALS
-  CONCRETE PAVEMENT REMOVALS
-  BRICK SURFACE TO BE SALVAGED
-  LANDSCAPING REMOVALS
-  SAWCUT
-  UNDERGROUND TUNNEL (APPROX. LIMITS)

### NOTES

1. REFER TO SHEET C2.01, GRADING PLAN, FOR GENERAL NOTES.
2. MINIMIZE DISTURBANCE TO SITE AND PROTECT EXISTING VEGETATION AND SITE FEATURES (CURBS, WALKS, PAVEMENTS, OVERHEAD AND UNDERGROUND UTILITIES, SIGNAGE, FENCING, ROADWAYS, ETC.) WHICH ARE TO REMAIN.
3. REPAIR OR REPLACE EXISTING PROPERTY AND SITE FEATURES, INCLUDING GRASS AND VEGETATION, WHICH IS TO REMAIN THAT IS DAMAGED BY THE WORK, TO THE OWNER'S SATISFACTION AND AT NO ADDITIONAL COST TO THE OWNER.
4. VISIT THE SITE PRIOR TO BIDDING; BE FAMILIAR WITH ACTUAL CONDITIONS IN THE FIELD. EXTRA COMPENSATION WILL NOT BE ALLOWED FOR CONDITIONS WHICH COULD HAVE BEEN DETERMINED OR ANTICIPATED BY EXAMINATION OF THE SITE, THE CONTRACT DRAWINGS AND THE INFORMATION AVAILABLE PERTAINING TO EXISTING SOILS, UTILITIES AND OTHER SITE CHARACTERISTICS.
5. HIRE THE SERVICES OF A UTILITY LOCATOR COMPANY TO LOCATE ALL PRIVATELY OWNED UTILITIES THAT MAY BE DISTURBED BY CONSTRUCTION OPERATIONS.
6. MAINTAIN DRAINAGE FROM EXISTING BUILDING AT ALL TIMES. PROVIDE TEMPORARY STORM SEWER, INCLUDING, BUT NOT LIMITED TO, CATCH BASINS, MANHOLES, PIPING, AND SIMILAR. DO NOT REMOVE EXISTING STORM SEWER UNTIL TEMPORARY OR PERMANENT STORM SEWER IS INSTALLED AND FUNCTIONAL. COORDINATE ALL REMOVALS WITH APPROPRIATE TRADES (SITE UTILITY CONTRACTOR, MECHANICAL CONTRACTOR, ETC.) AS REQUIRED.



**ARCHITECT**  
**MA ARCHITECTURE**  
 1201 KEOSAUQUA WAY, SUITE 101  
 DES MOINES, IA 50309  
 Ph. 515 473 4834

**CIVIL / LANDSCAPE**  
**BOLTON & MENK**  
 430 E GRANDE AVE #101  
 DES MOINES, IA 50309  
 Ph. 515 259 9190

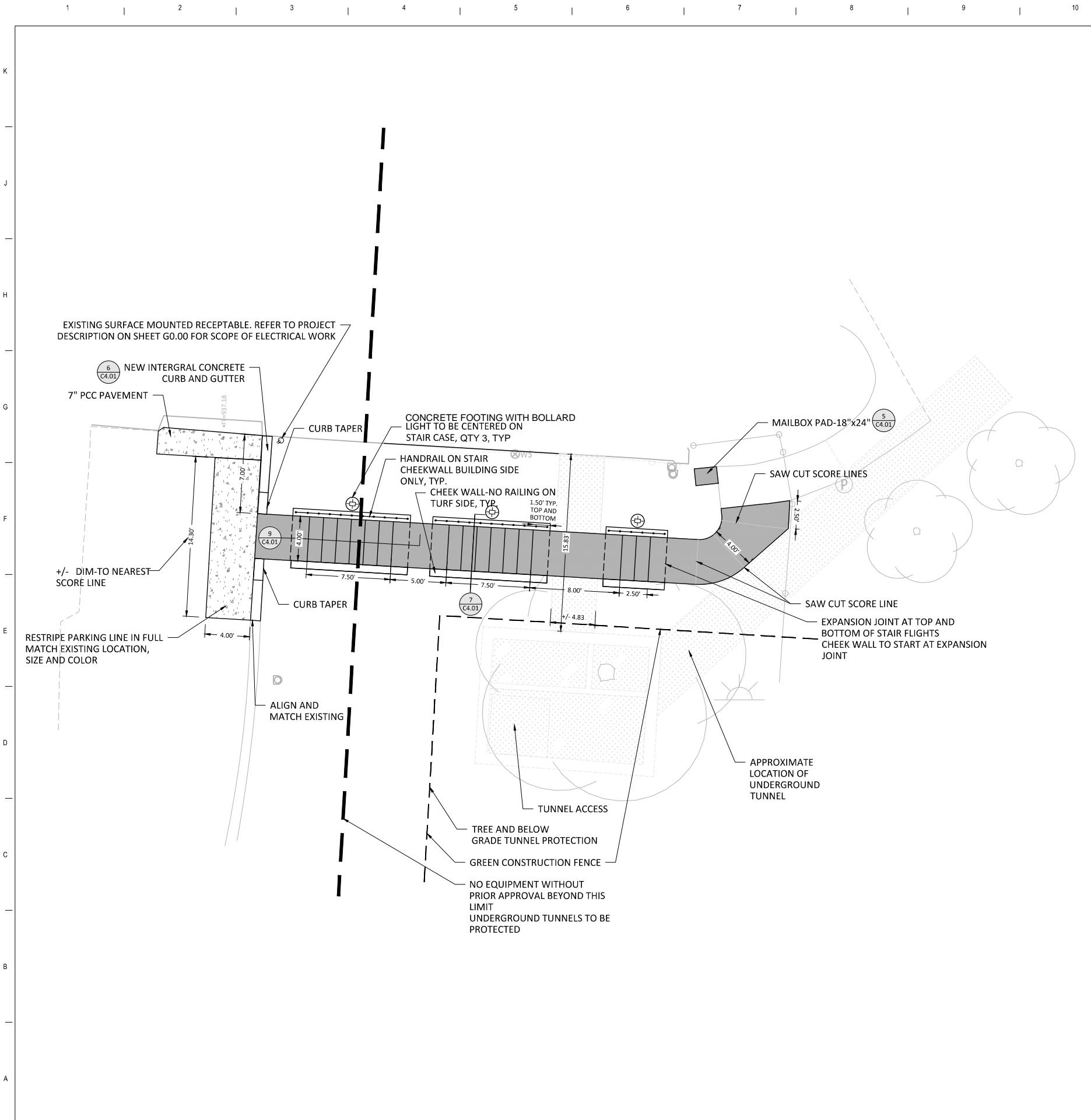
**IOWA DEPARTMENT OF ADMINISTRATIVE SERVICES**  
**DAS TH CARRIAGE HOUSE EXTERIOR STAIR REPLACEMENT**  
 2300 GRAND AVE, DES MOINES, IA 50312

**CONSTRUCTION DOCUMENTS**

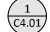


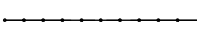


MA Architecture 073.24  
 No.:  
 Date: 08/27/2024  
 Revisions  
 MARK DESCRIPTION DATE

## REMOVALS PLAN

# C0.01

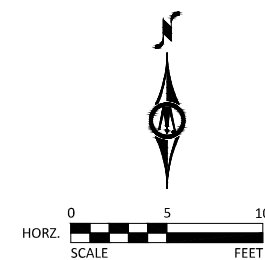


### LEGEND

-  REFERENCE KEY TO SITE DETAILS  
DETAIL I.D. NUMBER (TOP)  
DETAIL SHEET NUMBER (BOTTOM)
-  PROPOSED CONCRETE WALK (4)  
C4.01
-  7" PCC PAVEMENT (6)  
C4.01
-  PROPOSED RAILING (9)  
C4.01
-  LIGHT BOLLARD WITH CONCRETE FOOTING  
REFER TO SPECIFICATION 32 33 00 FOR BOLLARD  
PRODUCT AND CONCRETE FOOTING RECOMMENDATION
-  UNDERGROUND TUNNEL (APPROX. LIMITS)

### NOTES

1. REFER TO SHEET C2.01, GRADING PLAN, FOR GENERAL NOTES.
2. CHECK ALL PLAN AND DETAIL DIMENSIONS AND VERIFY SAME BEFORE FIELD LAYOUT.
3. ALL DISTURBED AREAS OUTSIDE THE BUILDING PAD, WHICH ARE NOT DESIGNATED TO BE PAVED OR RECEIVE AGLIME, SHALL RECEIVE AT LEAST 6" OF TOPSOIL AND SHALL BE SODDED. CONTRACTOR IS RESPONSIBLE FOR THE FIRST WEEK OF INITIAL WATERING AND THEN WILL TURN WATERING OVER TO TERRACE HILL. ALL AREAS NOT DESIGNATED FOR SOD OR A SPECIFIC SEED MIX, WHICH ARE DISTURBED BY CONSTRUCTION, SHALL BE SEEDDED WITH SEED MIX #1.
4. WHERE NEW SOD MEETS EXISTING SOD, CUT A CLEAN, SHARP EDGE TO ALLOW FOR A CONSISTENT, UNIFORM, AND STRAIGHT JOINT BETWEEN NEW SOD AND EXISTING TURFGRASS. JAGGED OR UNEVEN JOINTS WILL NOT BE ACCEPTED. REMOVE TOPSOIL AT THE JOINT BETWEEN NEW SOD AND EXISTING TURFGRASS, AS REQUIRED, TO ALLOW NEW SOD SURFACE TO BE FLUSH WITH EXISTING TURFGRASS SURFACE.
5. FAILURE OF TURF DEVELOPMENT: IN THE EVENT THE CONTRACTOR FAILS TO PROVIDE AN ACCEPTABLE TURF, RE-SOD ALL APPLICABLE AREAS, AT NO ADDITIONAL COST TO THE OWNER, TO THE SATISFACTION OF THE ENGINEER OR LANDSCAPE ARCHITECT.
6. REFER TO SITE FURNISHING SPECIFICATIONS FOR PRODUCT AND MANUFACTURER OF MAILBOX AND LIGHT BOLLARDS.



ARCHITECT  
**MA ARCHITECTURE**  
 1201 KEOSAUQUA WAY, SUITE 101  
 DES MOINES, IA 50309  
 Ph. 515 473 4834

CIVIL / LANDSCAPE  
**BOLTON & MENK**  
 430 E GRANDE AVE #101  
 DES MOINES, IA 50309  
 Ph. 515 259 9190

**IOWA DEPARTMENT OF ADMINISTRATIVE SERVICES**  
**DAS TH CARRIAGE HOUSE EXTERIOR STAIR REPLACEMENT**  
 2300 GRAND AVE, DES MOINES, IA 50312

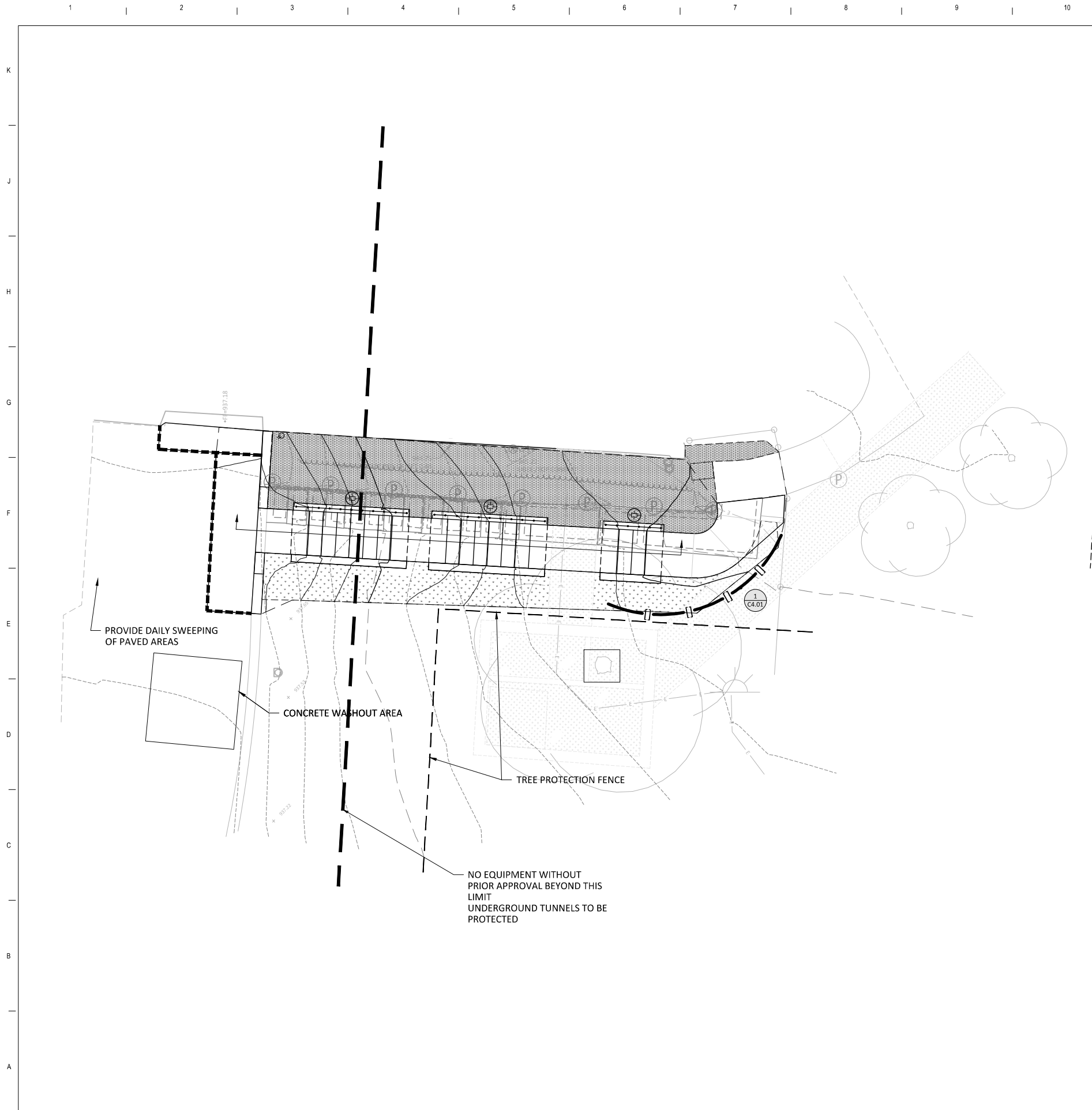
**CONSTRUCTION DOCUMENTS**

MA Architecture 073.24  
 No.:  
 Date: 08/27/2024  
 Revisions  
 MARK DESCRIPTION DATE

### SITE PLAN

### CI.01



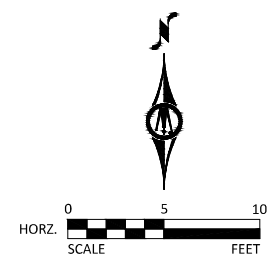


### LEGEND

- REFERENCE KEY TO SITE DETAILS  
DETAIL I.D. NUMBER (TOP)  
DETAIL SHEET NUMBER (BOTTOM)
- EXISTING CONTOUR
- PROPOSED CONTOUR
- PROPOSED SPOT ELEVATION
- PROPOSED GRADING LIMITS
- PROPOSED WATTLE
- PROPOSED LANDSCAPE MULCH
- PROPOSED SOD LIMITS, LAP AND STAKE.
- PROPOSED CONCRETE WALK

### NOTES

1. REFER TO SHEET C2.01, GRADING PLAN, FOR GENERAL NOTES.
2. MAINTAIN ADJACENT PROPERTY AND PUBLIC STREETS CLEAN FROM CONSTRUCTION CAUSED DIRT AND DEBRIS ON A DAILY BASIS. PROTECT DRAINAGE SYSTEMS FROM SEDIMENTATION AS A RESULT OF CONSTRUCTION RELATED DIRT AND DEBRIS.
3. MAINTAIN DUST CONTROL DURING GRADING OPERATIONS.
4. ALL EROSION CONTROL METHODS SHALL COMPLY WITH OTHER LOCAL REGULATIONS.
5. IF EROSION AND SEDIMENT CONTROL MEASURES TAKEN ARE NOT ADEQUATE AND RESULT IN DOWNSTREAM SEDIMENTATION, CLEAN OUT DOWNSTREAM STORM SEWERS AND OTHER CONVEYANCE DEVICES AS NECESSARY, INCLUDING ASSOCIATED RESTORATION.
6. PRIOR TO CONSTRUCTION, DELINEATE TURF AND VEGETATED AREAS NOT TO BE DISTURBED WITH GREEN SNOW FENCE. DO NOT ALLOW CONSTRUCTION TRAFFIC, EQUIPMENT, OR MATERIALS TO UTILIZE, ACCESS, OR OTHERWISE ENTER THE DELINEATED AREAS. MINIMIZE SOIL COMPACTION AND DISRUPTION OF TOPSOIL IN AREAS OUTSIDE THE CONSTRUCTION LIMITS TO COMPLY WITH THE MN CONSTRUCTION STORMWATER PERMIT.



ARCHITECT  
**MA ARCHITECTURE**  
 1201 KEOSAUQUA WAY, SUITE 101  
 DES MOINES, IA 50309  
 Ph. 515 473 4834

CIVIL / LANDSCAPE  
**BOLTON & MENK**  
 430 E GRANDE AVE #101  
 DES MOINES, IA 50309  
 Ph. 515 259 9190

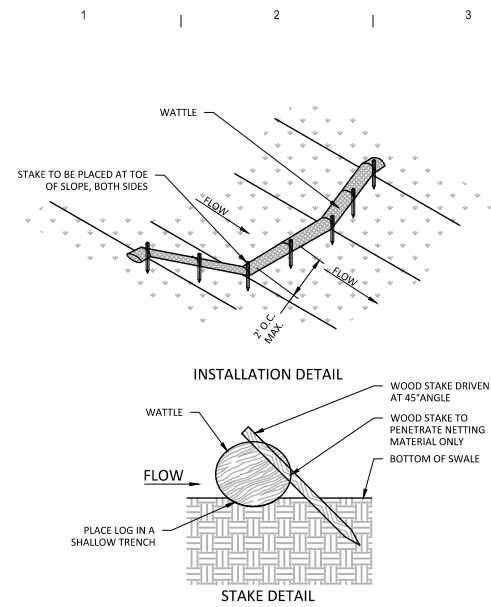
**IOWA DEPARTMENT OF ADMINISTRATIVE SERVICES**  
**DAS TH CARRIAGE HOUSE EXTERIOR STAIR REPLACEMENT**  
 2300 GRAND AVE, DES MOINES, IA 50312

**CONSTRUCTION DOCUMENTS**

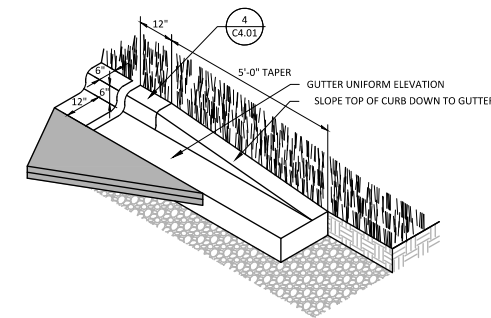
MA Architecture 073.24  
 No.:  
 Date: 08/27/2024  
 Revisions  
 MARK DESCRIPTION DATE

## EROSION PLAN

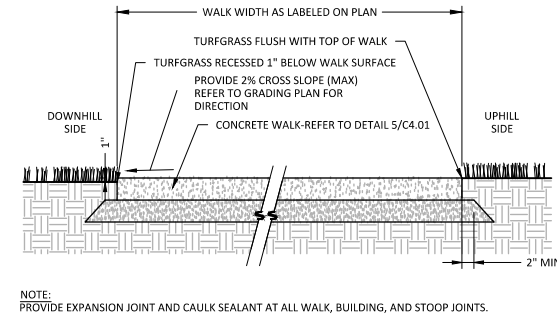
# C3.01



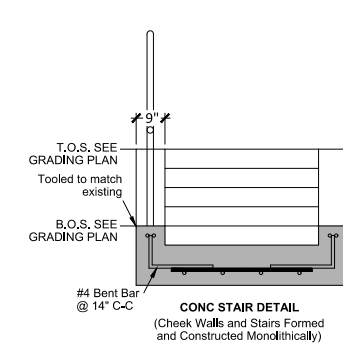
**1**  
C4.01  
**WATTLE**  
NOT TO SCALE



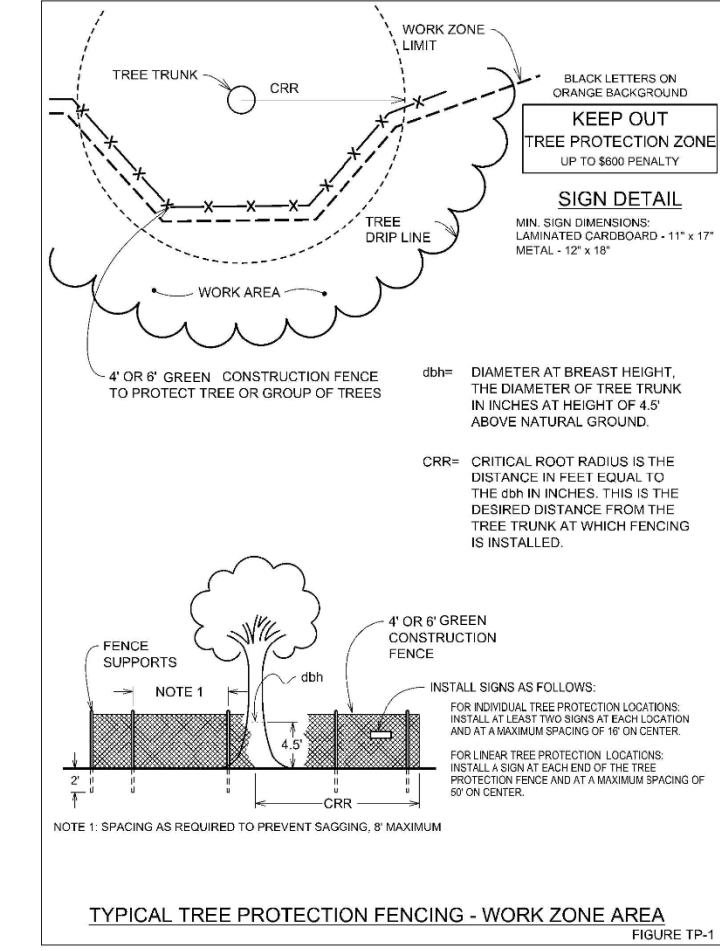
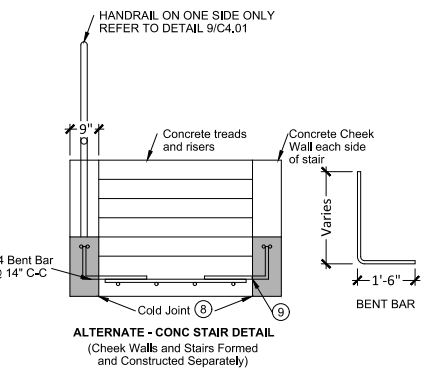
**3**  
C4.01  
**CURB TERMINATOR**  
NOT TO SCALE



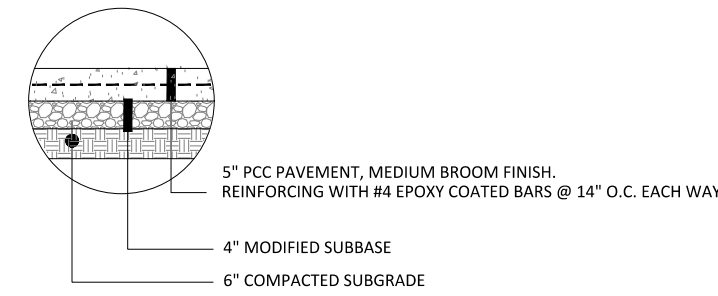
**4**  
C4.01  
**CONCRETE WALK**  
NOT TO SCALE



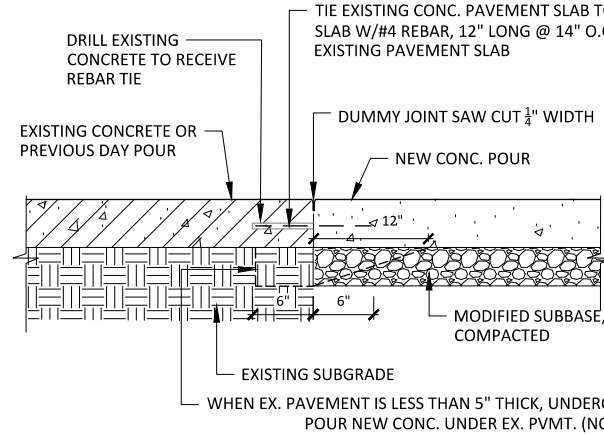
**7**  
C4.01  
**SECTION: CONCRETE STAIRS WITH CHEEKWALL AND RAILING**  
NOT TO SCALE



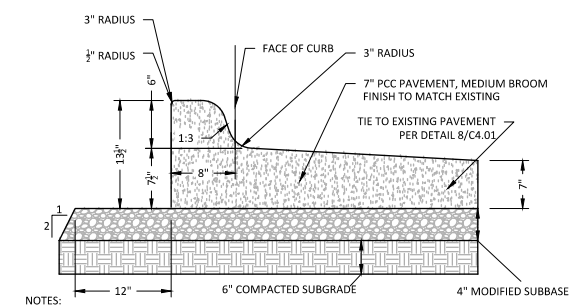
**2**  
C4.01  
**TREE PROTECTION FENCING**  
NOT TO SCALE



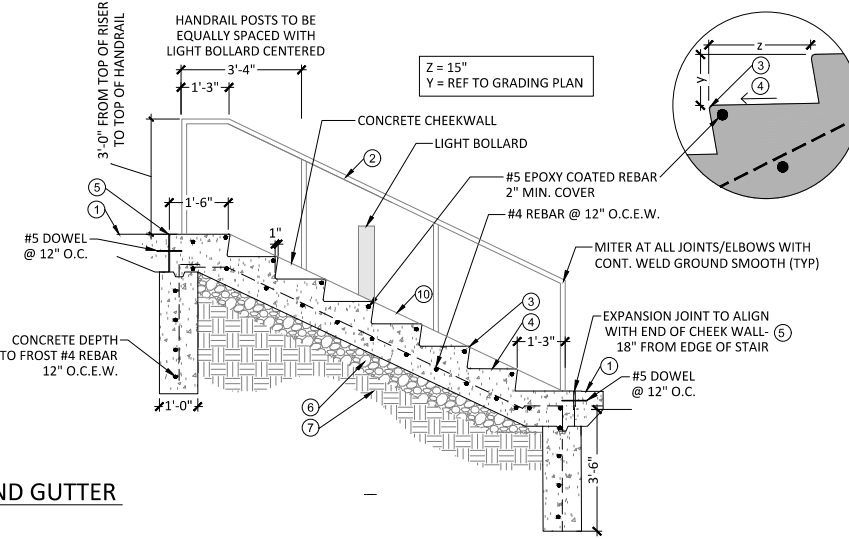
**5**  
C4.01  
**PAVEMENT, PCC, 5"**  
NOT TO SCALE



**8**  
C4.01  
**PAVEMENT JOINT AT EXISTING CONCRETE PAVEMENT**  
NOT TO SCALE



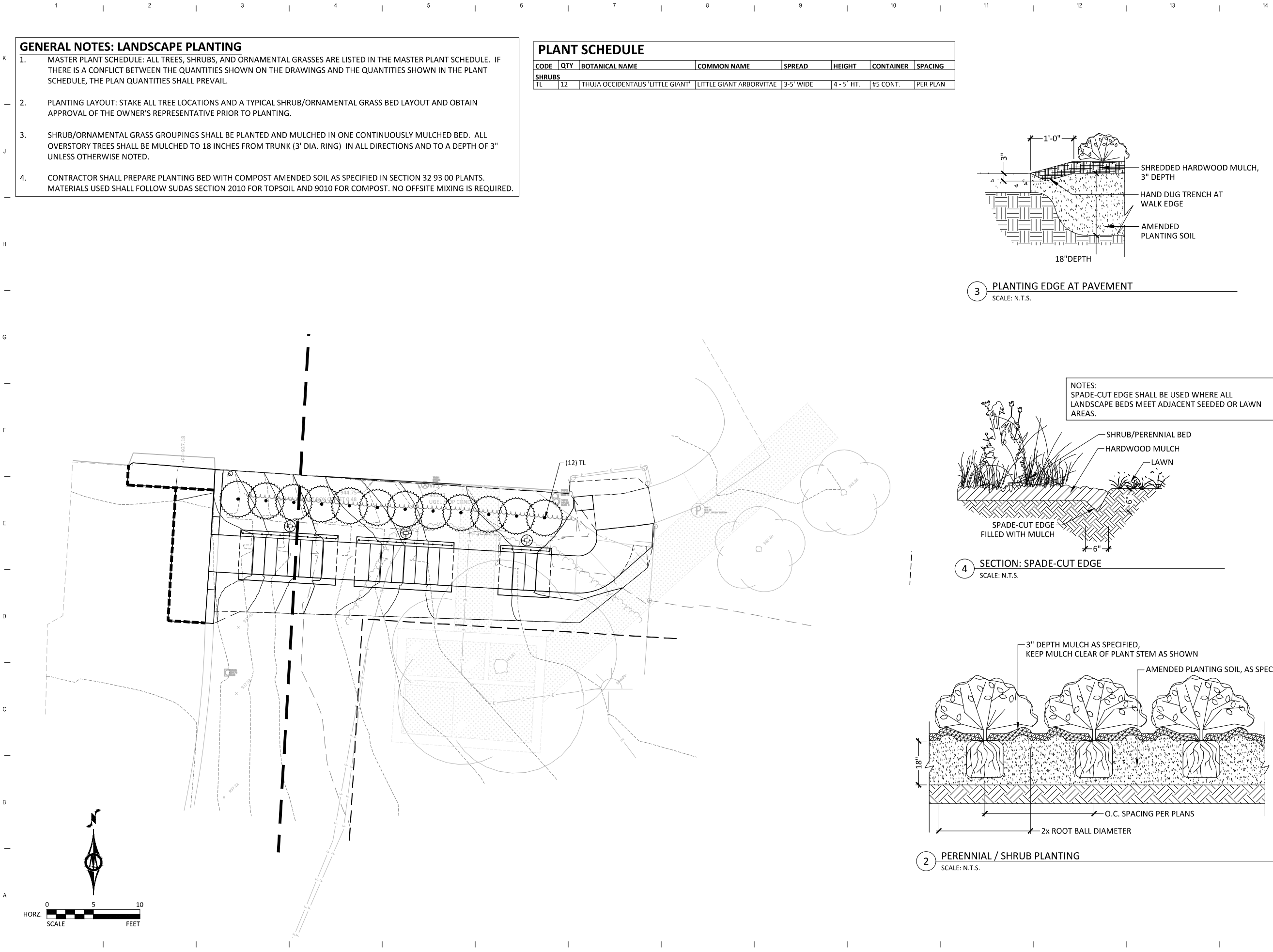
**6**  
C4.01  
**INTERGRAL 7" PCC PAVEMENT WITH CURB AND GUTTER**  
NOT TO SCALE



**9**  
C4.01  
**SECTION: CONCRETE STAIRS WITH CHEEKWALL AND RAILING**  
NOT TO SCALE

- GENERAL NOTES:**
- CONTRACTOR SHALL VERIFY ALL MEASUREMENTS ON THE HANDRAILS FOLLOWING CONSTRUCTION OF STAIRS AND PRIOR TO FABRICATION
  - RISERS TO BE EQUAL HEIGHT FOR ENTIRE RUN
  - TREADS TO BE EQUAL DEPTH FOR ENTIRE RUN
  - REFER TO GRADING PLAN FOR TOP OF STAIR AND BOTTOM OF STAIR ELEVATIONS
  - BOTTOM OF FOOTING SHOULD REST ON COMPACTED SUBGRADE OR UNDISTURBED SOIL
  - PROVIDE A MINIMUM OF 2 INCHES OF COVER FOR ALL REINFORCING

- DETAIL KEYNOTES:**
- Concrete Walk
  - 1-1/4" Dia. pipe steel material handrail, galvanized and painted bronze color. Submit color samples for approval.
  - Staircase to have 1/2" R on nosing of tread
  - Staircase tread to be 1% slope
  - Expansion joint with sealant
  - Modified Subbase
  - Subgrade 95% compacted
  - Upon approval of Engineer, side rails may be formed and constructed separately from the stairs
  - If side rails and stairs are constructed separately, dowel bar substitutes may be used for the bent bars connections between the side rails and the stairs.
  - Coredrill handrail into cheekwall, Min. 6" embed, filled with non-shrink grout and same color sealant.
- BASE BID, PAINTED HANDRAIL, STEEL PIPE MATERIAL, GALVANIZED AND PAINTED FINISH**
- ADD ALTERNATE NO. 01: BRONZE HANDRAIL, BRONZE PIPE MATERIAL, POLISHED FINISH**

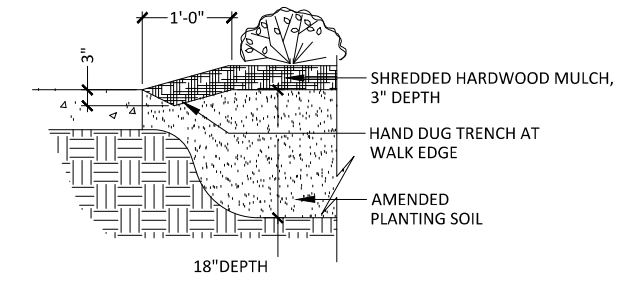


**GENERAL NOTES: LANDSCAPE PLANTING**

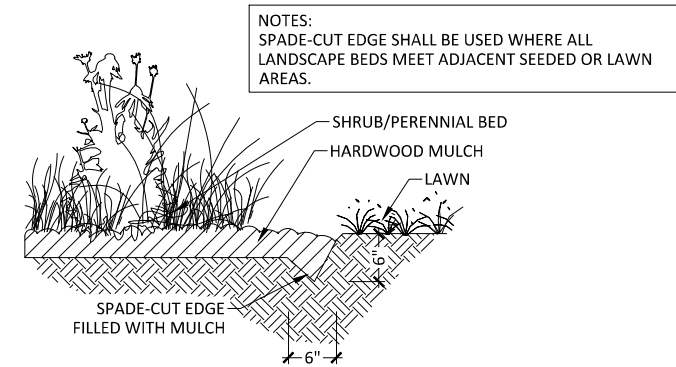
1. MASTER PLANT SCHEDULE: ALL TREES, SHRUBS, AND ORNAMENTAL GRASSES ARE LISTED IN THE MASTER PLANT SCHEDULE. IF THERE IS A CONFLICT BETWEEN THE QUANTITIES SHOWN ON THE DRAWINGS AND THE QUANTITIES SHOWN IN THE PLANT SCHEDULE, THE PLAN QUANTITIES SHALL PREVAIL.
2. PLANTING LAYOUT: STAKE ALL TREE LOCATIONS AND A TYPICAL SHRUB/ORNAMENTAL GRASS BED LAYOUT AND OBTAIN APPROVAL OF THE OWNER'S REPRESENTATIVE PRIOR TO PLANTING.
3. SHRUB/ORNAMENTAL GRASS GROUPINGS SHALL BE PLANTED AND MULCHED IN ONE CONTINUOUSLY MULCHED BED. ALL OVERSTORY TREES SHALL BE MULCHED TO 18 INCHES FROM TRUNK (3' DIA. RING) IN ALL DIRECTIONS AND TO A DEPTH OF 3" UNLESS OTHERWISE NOTED.
4. CONTRACTOR SHALL PREPARE PLANTING BED WITH COMPOST AMENDED SOIL AS SPECIFIED IN SECTION 32 93 00 PLANTS. MATERIALS USED SHALL FOLLOW SUDAS SECTION 2010 FOR TOPSOIL AND 9010 FOR COMPOST. NO OFFSITE MIXING IS REQUIRED.

**PLANT SCHEDULE**

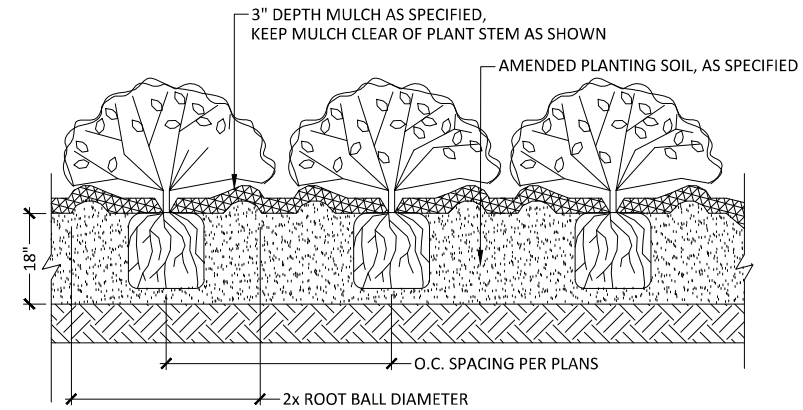
CODE	QTY	BOTANICAL NAME	COMMON NAME	SPREAD	HEIGHT	CONTAINER	SPACING
<b>SHRUBS</b>							
TL	12	THUJA OCCIDENTALIS 'LITTLE GIANT'	LITTLE GIANT ARBORVITAE	3-5' WIDE	4-5' HT.	#5 CONT.	PER PLAN



**3 PLANTING EDGE AT PAVEMENT**  
SCALE: N.T.S.



**4 SECTION: SPADE-CUT EDGE**  
SCALE: N.T.S.



**2 PERENNIAL / SHRUB PLANTING**  
SCALE: N.T.S.

**WATERPROOFING NOTES:**

- ABOVE GRADE VISUAL EVALUATION SHOWS TERMINATION BAR IS LOOSE AND/OR DETACHED IN SOME AREAS. IN SOME INSTANCES, THE WATERPROOFING IS DETACHED FROM THE TERMINATION BAR.
- FULL REPLACEMENT OF TERMINATION BAR TO BE PART OF THIS PROJECT.
- WHEN GRADE IS DISTURBED DURING CONSTRUCTION, THE CONTRACTOR TO FULLY EVALUATE THE CONDITIONS OF THE WATERPROOFING AND PROVIDE AN ALTERNATE PRICE FOR ANY REPAIRS OF THE WATERPROOFING THAT MAY BE REQUIRED.
- REFER TO IMAGES BELOW FOR EXISTING CONDITIONS.



ARCHITECT  
**MA ARCHITECTURE**  
 1201 KEOSAUQUA WAY, SUITE 101  
 DES MOINES, IA 50309  
 Ph. 515 473 4834

CIVIL / LANDSCAPE  
**BOLTON & MENK**  
 430 E GRANDE AVE #101  
 DES MOINES, IA 50309  
 Ph. 515 259 9190

**IOWA DEPARTMENT OF ADMINISTRATIVE SERVICES  
 DAS TH CARRIAGE HOUSE EXTERIOR STAIR REPLACEMENT  
 2300 GRAND AVE, DES MOINES, IA 50312**

**CONSTRUCTION DOCUMENTS**

MA Architecture 073.24  
 No.:  
 Date: 08/27/2024  
 Revisions  
 MARK DESCRIPTION DATE