



**Lawn Mowing Schedule:**  
 A - Regular Mowing  
 B - Mow 1x annually (Fall)

0 50 100 200 Feet

**Legend**  
 [Dashed Line] Site Boundary  
 (shown in white)

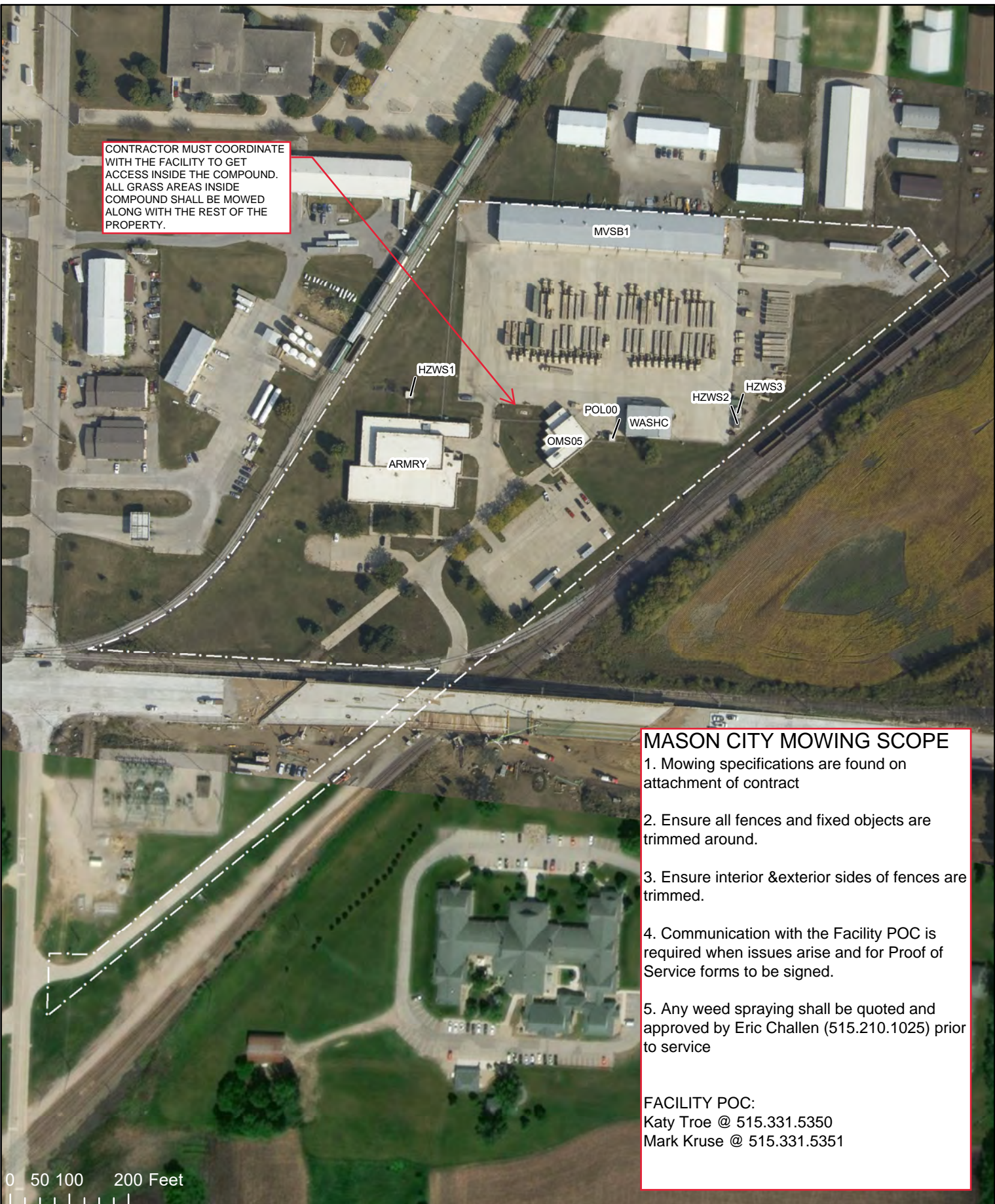
**Aerial Imagery Sources**  
 Des Moines, Ankeny, Camp Dodge:  
 2010 Polk County, Iowa  
 All Others:  
 2009 and 2010 Iowa Army National Guard  
 Surrounding Areas:  
 2010 US Dept. of Agriculture



**BOONE AASF ARMORY FMS**  
 BOONE AASF ARMORY FMS  
 700 SNEDDEN DR  
 Boone, IA 50036-5411  
 LAT: 42.049 LON: -93.853



CONTRACTOR MUST COORDINATE WITH THE FACILITY TO GET ACCESS INSIDE THE COMPOUND. ALL GRASS AREAS INSIDE COMPOUND SHALL BE MOWED ALONG WITH THE REST OF THE PROPERTY.



**MASON CITY MOWING SCOPE**

1. Mowing specifications are found on attachment of contract
2. Ensure all fences and fixed objects are trimmed around.
3. Ensure interior & exterior sides of fences are trimmed.
4. Communication with the Facility POC is required when issues arise and for Proof of Service forms to be signed.
5. Any weed spraying shall be quoted and approved by Eric Challen (515.210.1025) prior to service

FACILITY POC:  
 Katy Troe @ 515.331.5350  
 Mark Kruse @ 515.331.5351

**Legend**

Site Boundary (shown in white)

Aerial Imagery Sources  
 Des Moines, Ankeny, Camp Dodge:  
 2014 Polk County, Iowa  
 All Others:  
 2009 and 2013 Iowa Army National Guard  
 Surrounding Areas:  
 2013 US Dept. of Agriculture



**MASON CITY ARMORY/FMS**  
 MASON CITY ARMORY/FMS  
 1160 SW 19TH ST  
 Mason City, IA 50401-6452  
 LAT: 43.13523 LON: -93.21799





0 50 100 200 Feet

**Legend**  
 Site Boundary  
 (shown in white)

Aerial Imagery Sources  
 Des Moines, Ankeny, Camp Dodge:  
 2014 Polk County, Iowa  
 All Others:  
 2009 and 2013 Iowa Army National Guard  
 Surrounding Areas:  
 2013 US Dept. of Agriculture



**WATERLOO AASF/ARMORY**  
 WATERLOO AASF/ARMORY  
 2245 W BIG ROCK RD  
 Waterloo, IA 50703-9643  
 LAT: 42.55478 LON: -92.38385





**Legend**

 Site Boundary  
(shown in white)

Aerial Imagery Sources  
Des Moines, Ankeny, Camp Dodge:  
2014 Polk County, Iowa  
All Others:  
2009 and 2013 Iowa Army National Guard  
Surrounding Areas:  
2013 US Dept. of Agriculture

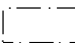


**IOWA CITY ARMORY**  
IOWA CITY ARMORY  
4540 MELROSE AVE  
Iowa City, IA 52246-9400  
LAT: 41.65877 LON: -91.60375

  
1:2,050



**Legend**

 Site Boundary  
(shown in white)

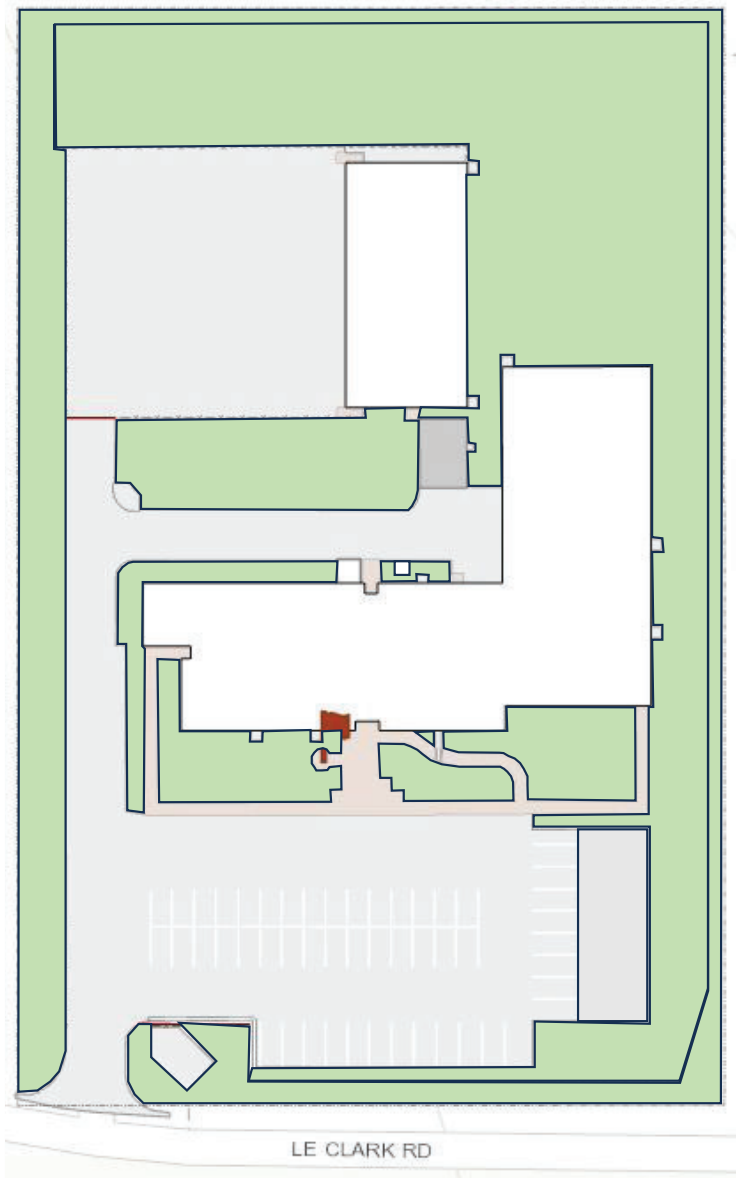
Aerial Imagery Sources  
Des Moines, Ankeny, Camp Dodge:  
2014 Polk County, Iowa  
All Others:  
2009 and 2013 Iowa Army National Guard  
Surrounding Areas:  
2013 US Dept. of Agriculture



**OTTUMWA ARMORY**

OTTUMWA ARMORY  
2858 N COURT ST  
Ottumwa, IA 52501-1163  
LAT: 41.06419 LON: -92.40843





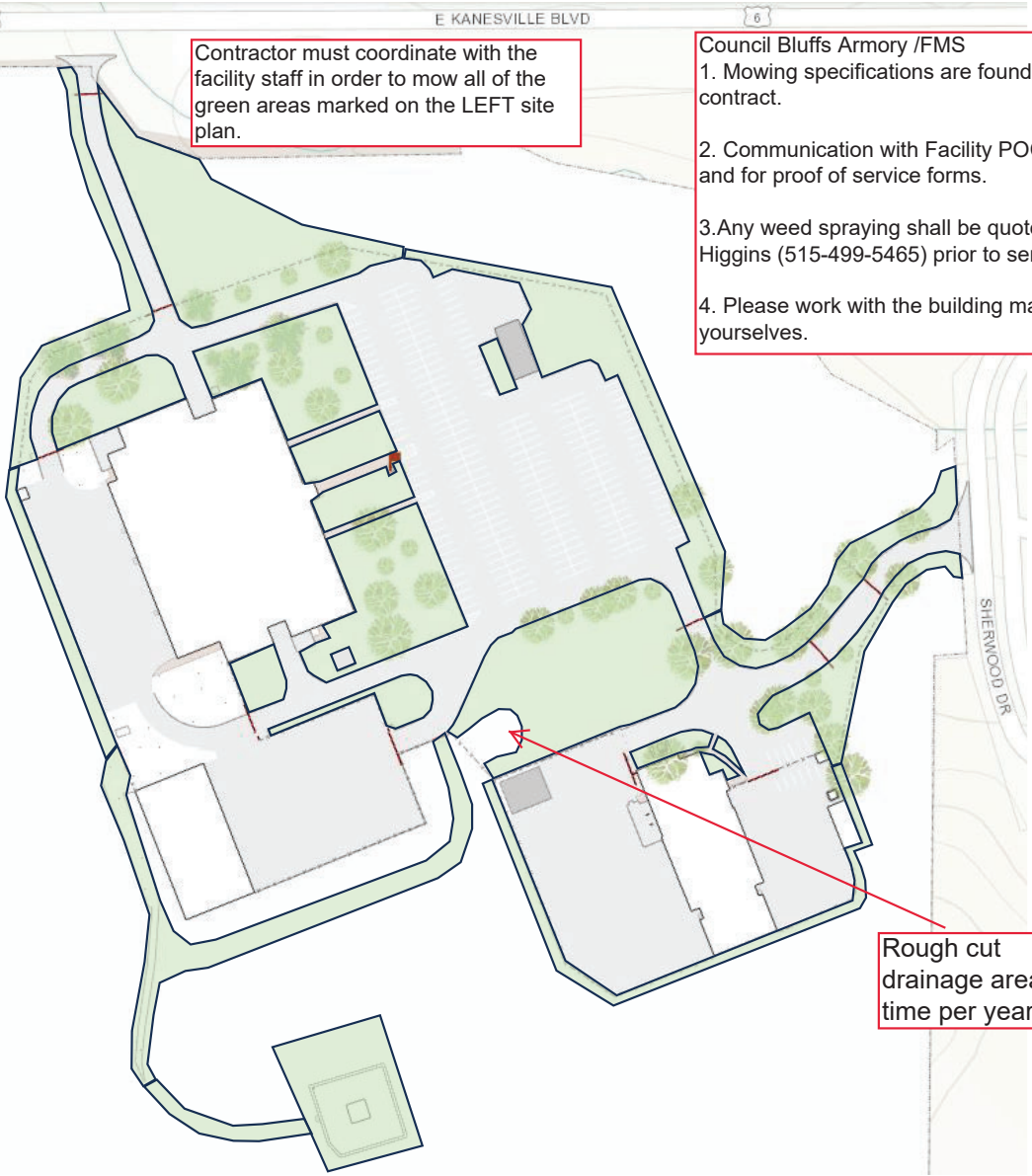
**Carroll Armory**

1. Mowing Specifications are found on the attachment of the contract.
2. Mow a 5' section around the exterior parameter of the fence.
3. Communication with the Facility POC is required when issues arise and for proof of service forms.
4. Any weed spraying shall be quoted & approved by Koby Higgins (515-499-5465) prior to service.

Estimated 1.4 Acres of grass

Contractor must coordinate with the facility staff in order to mow all of the green areas marked on the LEFT site plan.





Contractor must coordinate with the facility staff in order to mow all of the green areas marked on the LEFT site plan.

- Council Bluffs Armory /FMS**
1. Mowing specifications are found on the attachment of the contract.
  2. Communication with Facility POC is required when issues arise and for proof of service forms.
  3. Any weed spraying shall be quoted and approved by Koby Higgins (515-499-5465) prior to service.
  4. Please work with the building managers and introduce yourselves.

Estimated 4.84 Acres

Rough cut drainage area (1) time per year



## Denison Armory

Contractor must coordinate with the facility staff in order to mow all of the green areas inside the white line / weed eat and mow outside the fence-line as well.

1. Mowing specifications are found on the attachment of the contract.
2. Communication with facility POC is required when issues arise and for proof of service forms.
3. Any weed spraying shall be quoted and approved by Koby Higgins (515-499-5465) prior to service.
4. Please work with the building managers and introduce yourselves.

Estimated 2.89  
acres of mow able  
land







Estimated 4.02 acres  
of mow able land

- Contractor must coordinate with the facility staff in order to mow all of the green areas inside the white line / weed eat and mow outside the fence-line as well.
1. Mowing specifications are found on the attachment of the contract.
  2. Communication with facility POC is required when issues arise and for proof of service forms.
  3. Any weed spraying shall be quoted and approved by Koby Higgins (515-499-5465) prior to service.
  4. Please work with the building managers and introduce yourselves.



0 50 100 200 Feet  
Site Boundary  
Aerial Image Credits:  
2017-2020 Iowa Army National Guard  
Maxar, Microsoft  
LE MARS ARMORY  
1050 NE LINCOLN ST  
Le Mars, IA 51031-3317  
Lat: 42.7905 Lon: -96.14852  
Site Number: 19C40  
1:910  
18 Jan 2022 | Iowa Army National Guard | Installation Geospatial Information & Services | IGA-DM-P



Compound no longer has grass around MVS1. It is now all rock on the North, East and West side. See "BLUE" marked areas that no longer need mowing.

In addition to all grass inside the property line(hash marks), areas in "red cloud" must also be mowed weekly

**Legend**

Site Boundary (shown in white)

Aerial Imagery Sources  
 Des Moines, Ankeny, Camp Dodge:  
 2014 Polk County, Iowa  
 All Others:  
 2009 and 2013 Iowa Army National Guard  
 Surrounding Areas:  
 2013 US Dept. of Agriculture

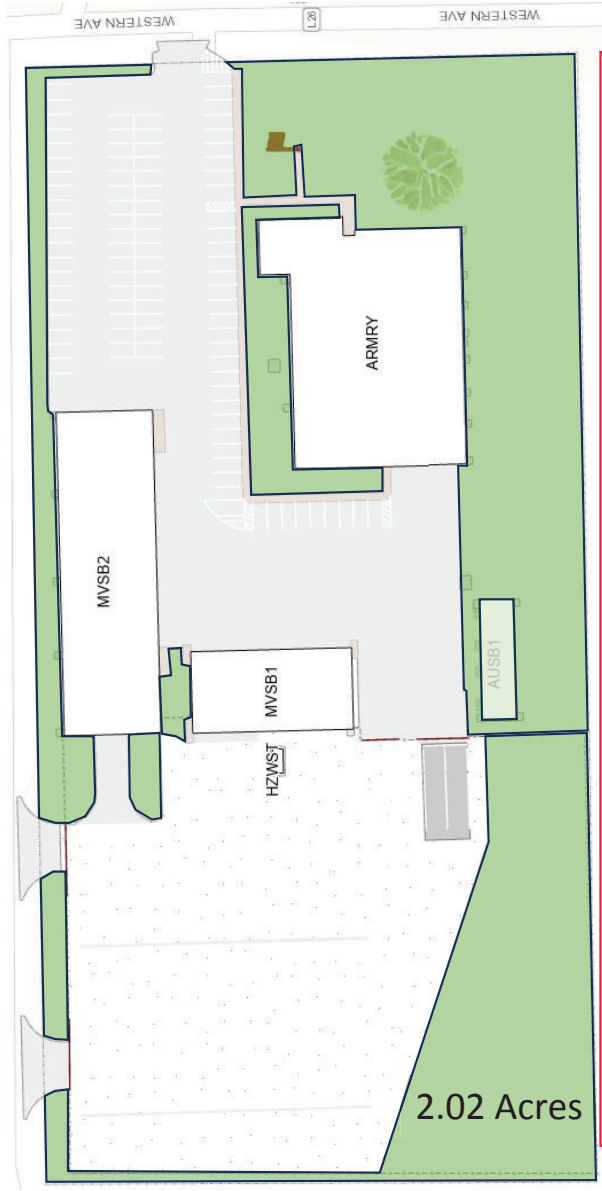


**PERRY ARMORY**

PERRY ARMORY  
 2930 WILLIS AVE  
 Perry, IA 50220-2324  
 LAT: 41.83953 LON: -94.07802

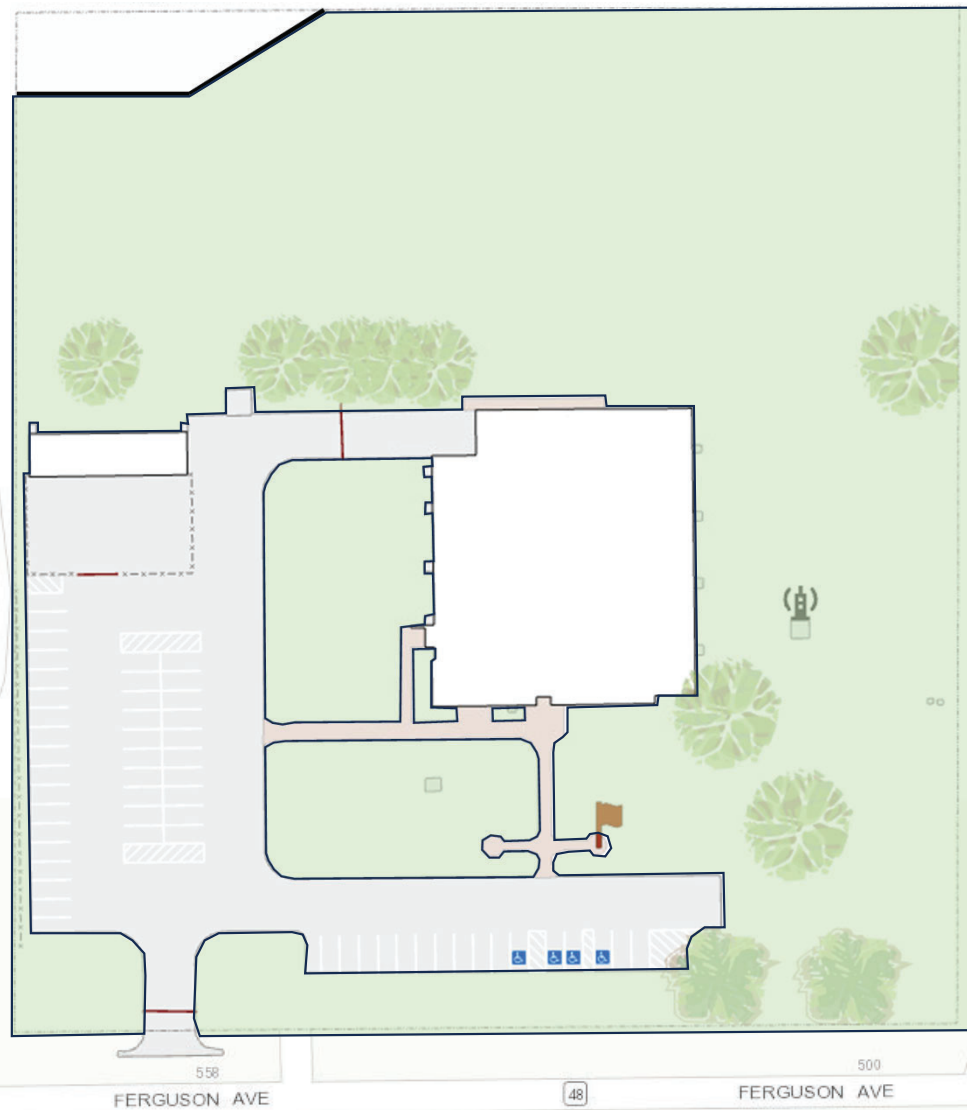


Contractor must coordinate with the facility staff in order to mow all of the green areas marked on the LEFT site plan.



- Sheldon Armory**
1. Mowing specifications are found on the attachment of the contract.
  2. Mow up to the roads from the facilities on the North, East & South sides.
  3. Mow around the fence lines on the west side at least a 5' path along the fence line and up to the Sheldon wastewater plant roundabout where it would fall into that 5' path.
  4. Communication with the Facility POC is required when issues arise and for proof of service forms.
  5. Any weed spraying shall be quoted & approved by Koby Higgins (515-499-5465) prior to service.



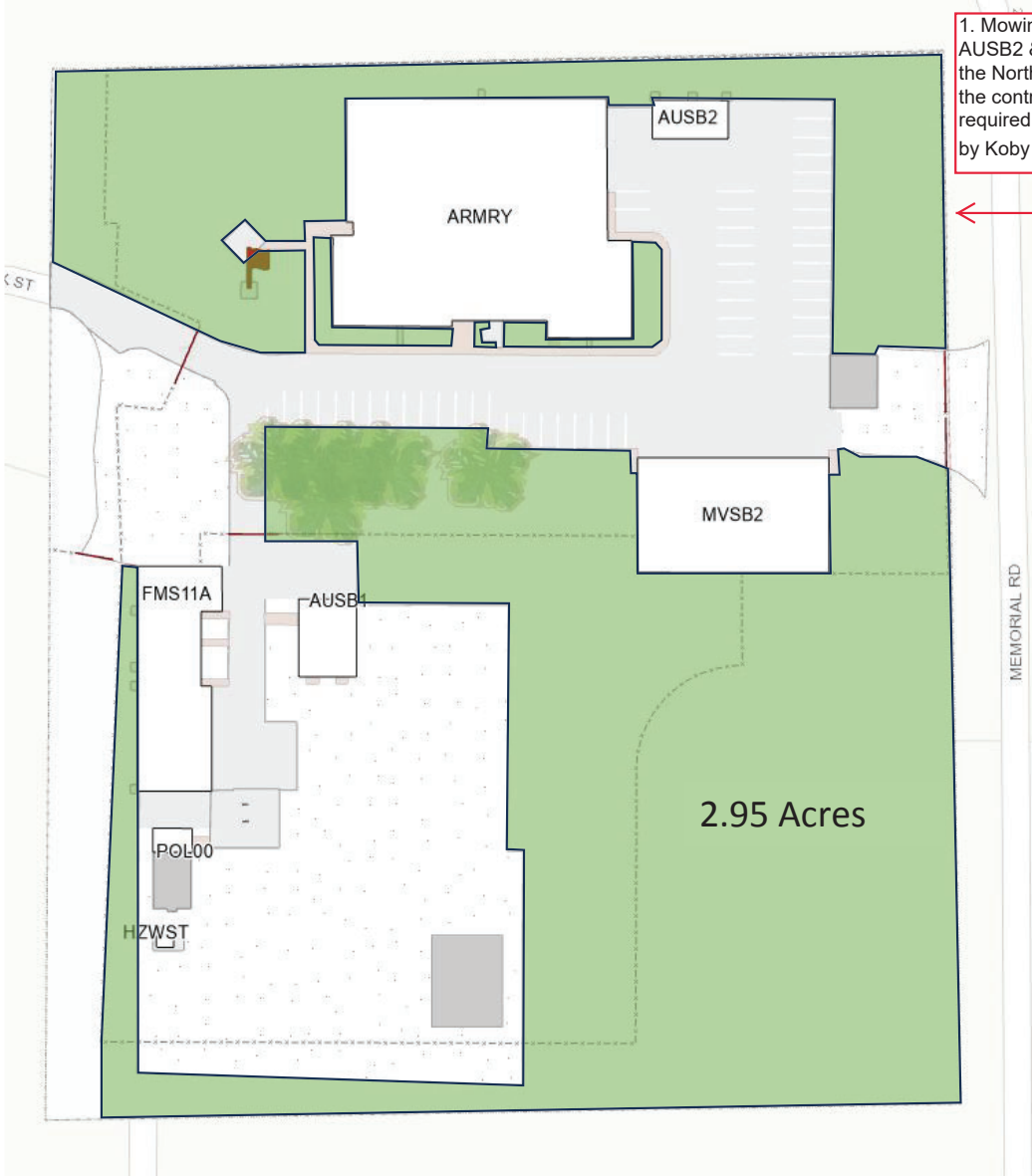


### Estimated 3.63 acres of mow able land

Contractor must coordinate with the facility staff in order to mow all of the Grass inside the white line / weed eat and mow outside the fence-line as well.

1. Mowing specifications are found on the attachment of the contract.
2. Communication with facility POC is required when issues arise and for proof of service forms.
3. Any weed spraying shall be quoted and approved by Koby Higgins (515-499-5465) prior to service.
4. Please work with the building managers and introduce yourselves.





1. Mowing specifications are found on the attachment of the contract.
2. Mow & weed eat around the Armory, AUSB2 & MVSB2. Mow from fence to road on East side facing Memorial Road.
3. Mow at least a 5' path along the North, South, and West side of the facility fence.
4. Mow all of the areas in Green on the Left site plan and the contractor must coordinate with the facility staff to get access.
5. Communication with the Facility POC is required when issues arise and for proof of service forms.
6. Any weed spraying shall be quoted & approved by Koby Higgins (515-499-5465) prior to service.

